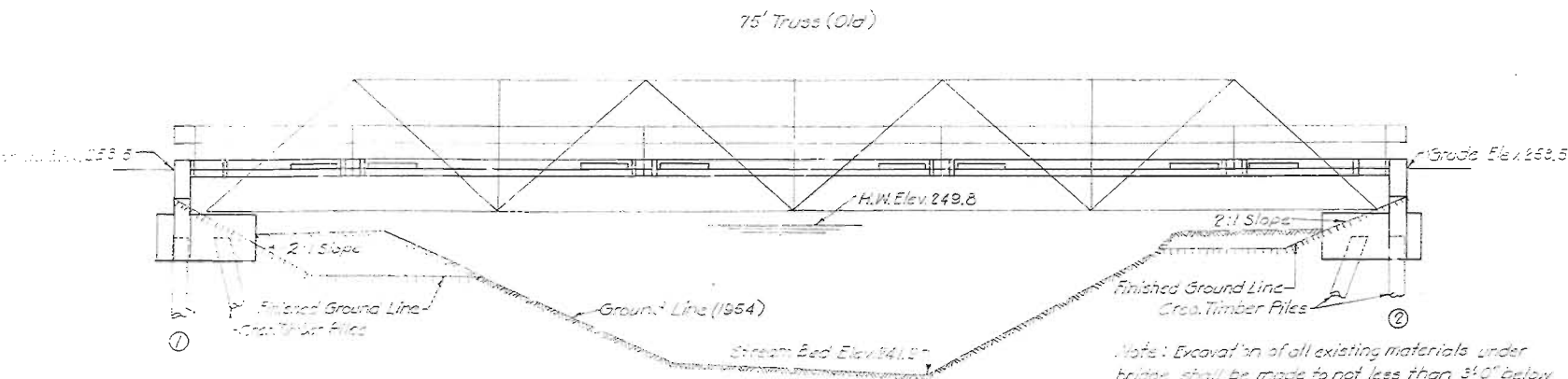


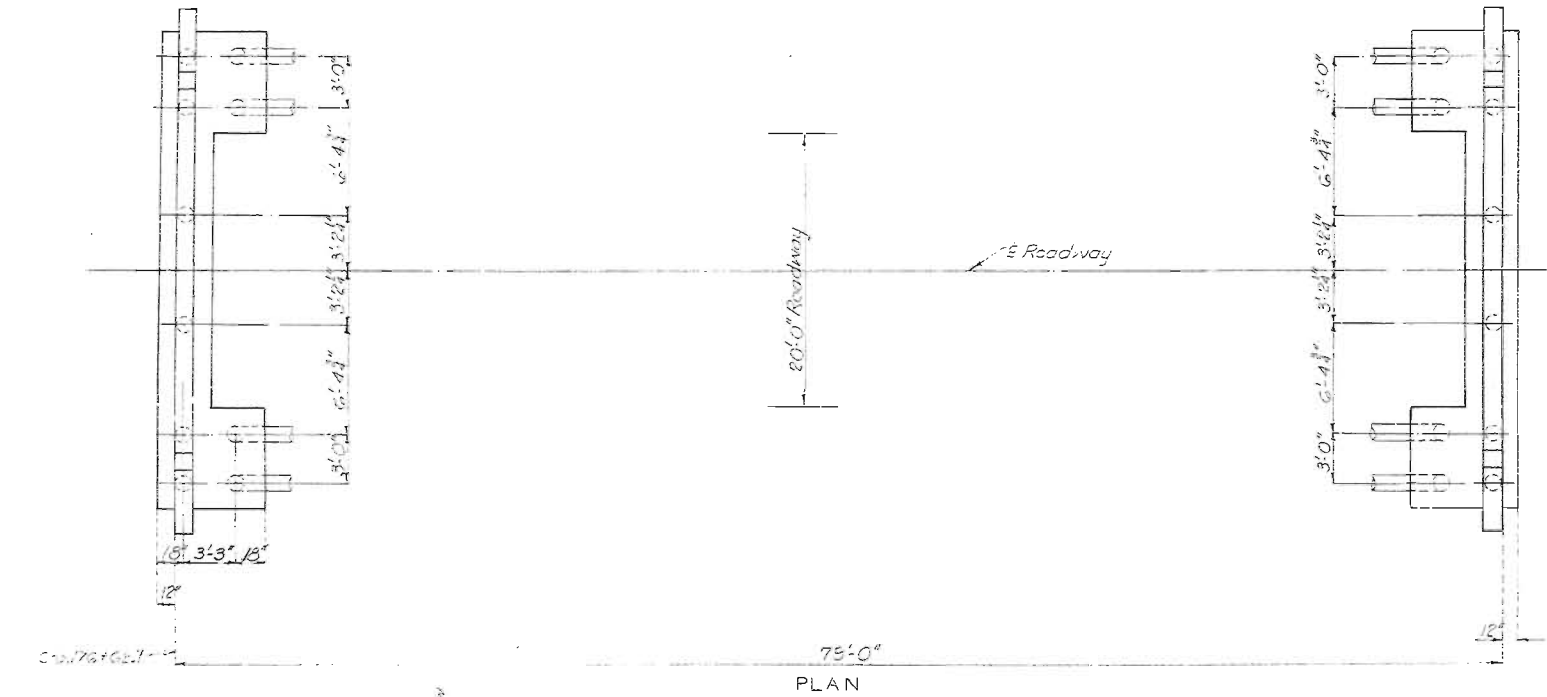
MISSOURI STATE HIGHWAY DEPARTMENT

Use 75' Truss Span from Bridge F-957 stored at Kennett, Mo. See Special Provisions

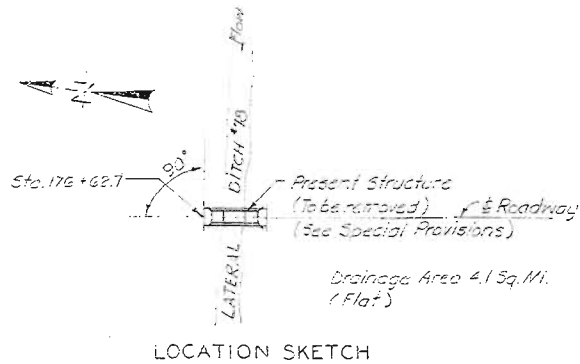
| FED. ROAD DIST. NO. | STATE | FED. AID PROJ. NO. | FISCAL YEAR | SHEET NO. | TOTAL SHEETS |
|---------------------|-------|--------------------|-------------|-----------|--------------|
| 5                   | 3     | 5-1554(1)          | 19          |           |              |



GENERAL ELEVATION



PLAN



Note: Excavation of all existing materials under bridge shall be made to not less than 3'-0" below bottom of steel and not less than 4'-0" outside of superstructure. Payment for this excavation outside limits of excavation for substructure will be made at unit contract price for Roadway Excavation.

| DATA FOR PILE DRIVING             |        |
|-----------------------------------|--------|
| Bent No.                          | 122    |
| Plan Capacity Per Pile            | 15.3T. |
| Computed Capacity Per Pile        | 10.2T. |
| Min. Penetration (Pile Tip Elev.) | 220.0  |

Note: All piling shall be creosoted timber. Estimated quantities shown on plans are based on the following lengths: 20 & 45'-0". These indicated lengths are approximate only. Proper lengths to give required bearing and/or penetration will be authorized by the Engineer.

Piles shall be driven to not less than the specified Plan capacities, and to the minimum penetrations noted; unless the pile lengths authorized and furnished fail to give Plan capacities, in which case, not less than the Computed capacities shall be obtained.

No test piles are to be driven and the Contractor may proceed to order piles to the lengths indicated on plans without further authorization by the Engineer.

As the pile driving proceeds the Engineer may at his election require the Contractor to cut off a designated length from the tip end of the piles before they are driven. All such lengths cut from pile tips will be included for payment as pile cut-offs.

GENERAL NOTES:

Design Specifications A.A.S.H.O. 1953.

Loading H10-44

Reinforcing Steel Stress 18,000/lb.

Structural Steel Stress 15,000/lb.

Class "B" Concrete Stress 1,000/lb.

All concrete shall be Class "B".

Where joint filler is specified on the plans it shall conform with the requirements for "Premoulded Material" for Filler as given in Section 38-19A(1)(h) of the Standard Specifications.

Field connections shall be riveted or if the Contractor desires he may use high tensile steel bolts with carburized washers in place of rivets except for connections noted in handrail details. (See Spec Rev.)

Paint: Shop, none; Field, contact surfaces or bolted field connections or steel where high tensile bolts are used, one coat of red lead and surfaces inaccessible after erection three coats of red lead. Red lead required shall be furnished by Contractor. Payment for cleaning and painting such surfaces will be included in unit price bid for fabricated Structural Steel.

For requirements on welding see Special Provisions. Qualification of welding operators will be required.

Rivets 3/4" holes 1/2" except as noted in handrail details.

| COMPLETE BILL OF REINFORCING STEEL |                          |
|------------------------------------|--------------------------|
| No.                                | Size Length Mat Location |
| End Bents No. 122                  |                          |
| 132                                | 2" 7'-9" A1 Beam         |
| 4                                  | 2" 21'-6" H1 Bk Wall     |
| 8                                  | 2" 6'-3" H2 Wing         |
| 4                                  | 2" 21'-6" H3 Bk Wall     |
| 16                                 | 2" 29'-9" H4 Beam        |
| 4                                  | 2" 27'-3" H5 "           |
| 32                                 | 2" 4'-0" H6 Wing         |
| 8                                  | 2" 11'-3" T1 "           |
| 88                                 | 2" 4'-0" V1 Bk Wall      |
| 6                                  | 2" 9'-9" V2 Wing         |
| 4                                  | 2" 6'-3" V3 "            |
| 32                                 | 2" 11'-9" U1 Beam        |
| 4                                  | 2" 7'-9" U2 "            |
| 8                                  | 2" 13'-3" P1 "           |
| 128 Superstructure 18"             |                          |
| 148                                | 2" 20'-3" S1 Slab        |
| 60                                 | 2" 21'-9" S2 "22'-6"     |
| 96                                 | 2" 27'-6" S3 "           |
| 42                                 | 2" 8'-0" S4 "            |

| ESTIMATED QUANTITIES                      |         |           |       |
|---|---------|-----------|-------|
| Item                                      | Substr. | Superstr. | Total |
| Class I Excavation for Structures Cu Yds. | 50      |           | 50    |
| Class "B" Concrete Cu Yds.                | 33.4    | 34.0      | 67.4  |
| Fabricated Structural Steel (New) Lbs.    |         | 3600      | 3600  |
| Fabricated Structural Steel (Old) Lbs.    | 3600    | 48860     | 48860 |
| Reinforcing Steel Lbs.                    | 3640    | 6920      | 10560 |
| Creo. Timber Piles in Place Lin. Ft.      | 840     | 6050      | 840   |
| Creo. Timber Piles Cut-offs Lin. Ft.      | 60      |           | 60    |

All excavation for bridge will be paid for as Class I Excavation for Structures.  
See Special Provisions regarding (old) and (new) Structural Steel.

Elev. 247.64 N.M.S.E.R. 2'-History 20' R. Sta. 176+62.7

BRIDGE OVER LATERAL DITCH NO. 78

STATE ROAD FROM RTE. NN 3 MILES SOUTHWEST OF RTE. 84 SOUTHWEST ABOUT 9.0 MILES S.E. OF KENNETT

PROJECT NO. 5-1354(1) (SUU) STA. 78+62.7

DUNKLIN COUNTY

SUBMITTED BY J. A. Wellman DATE 12/6/1954

APPROVED BY Rex M. Whitton DATE

Revised Feb. 2, 1955

Sheet No. 1 of 3.

Drawn Sept. 1954 by B.F.G.  
Checked Sept. 1954 by A.H.L.

Note: This drawing is not to scale. Follow dimensions.

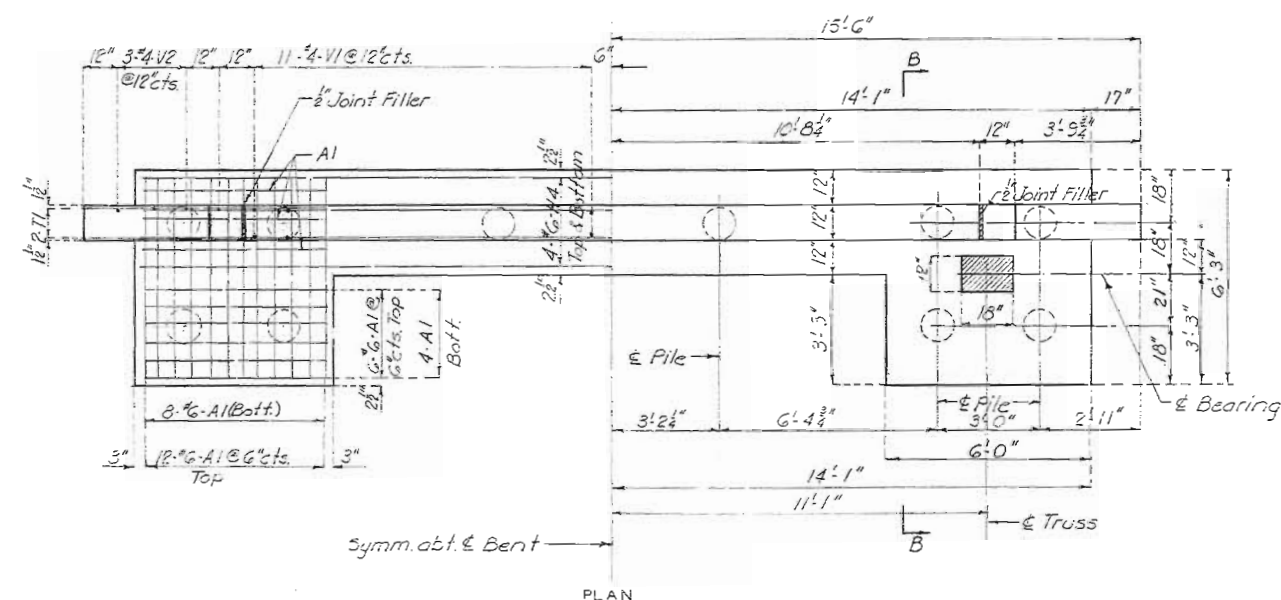
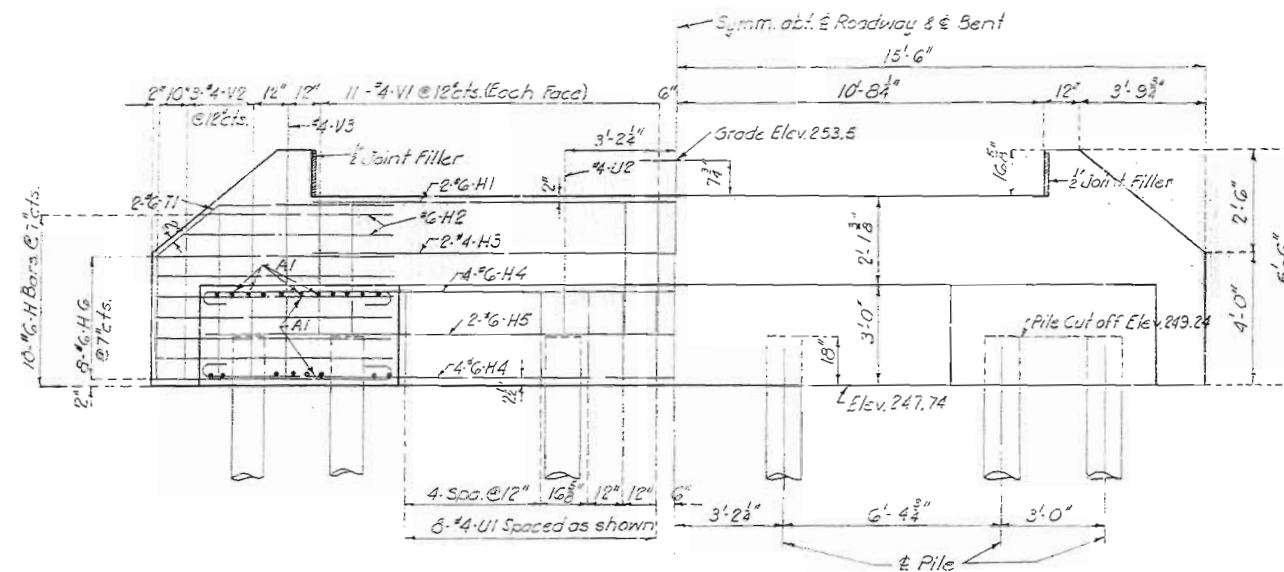
FINISHED

STD C-1083

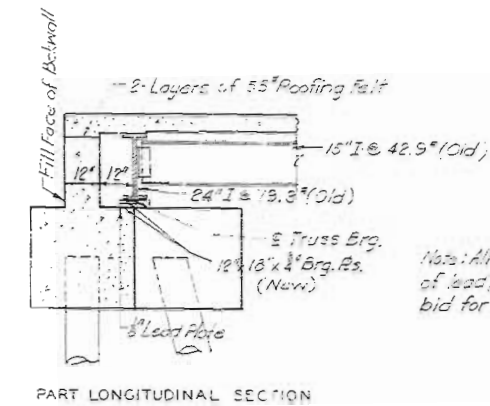
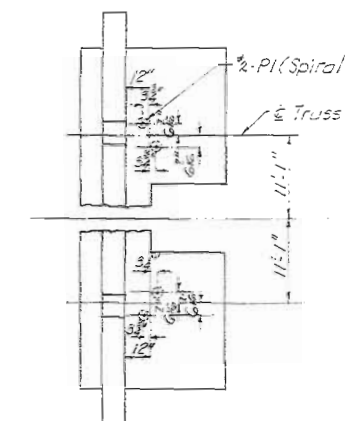
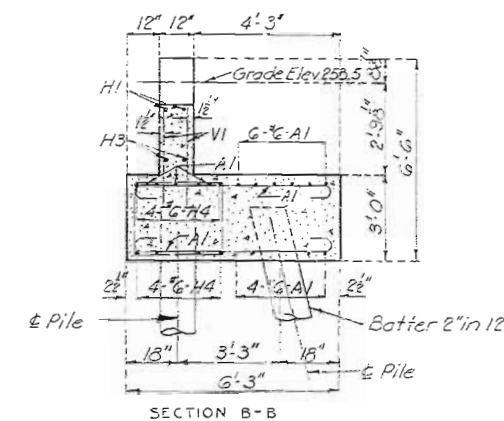
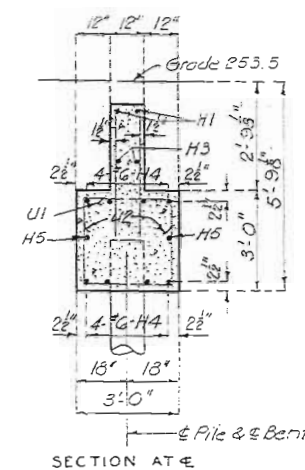
P-663

## MISSOURI STATE HIGHWAY DEPARTMENT

| FED. ROAD<br>DIST. NO. | STATE | FED. AID<br>PROJ. NO. | FISCAL<br>YEAR | SHEET<br>NO. | TOTAL<br>SHEETS |
|------------------------|-------|-----------------------|----------------|--------------|-----------------|
| 5                      | MO.   | 31547<br>(500)        | 19             |              |                 |

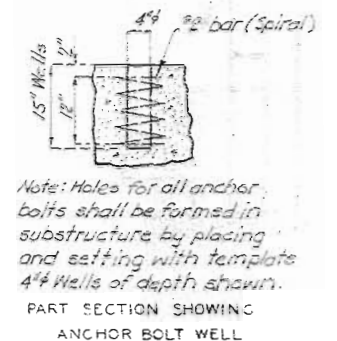


DETAILS OF END BENTS NO. 1 & 2



*Note: All lead plates shall be 8" x 4". Cost of lead plates shall be included in price bid for other items.*

Note: Grout for anchor bolt  
nails shall contain iron oxide  
(Epoxy or an approved equivalent.)



BRIDGE OVER LATERAL DITCH NO. 78

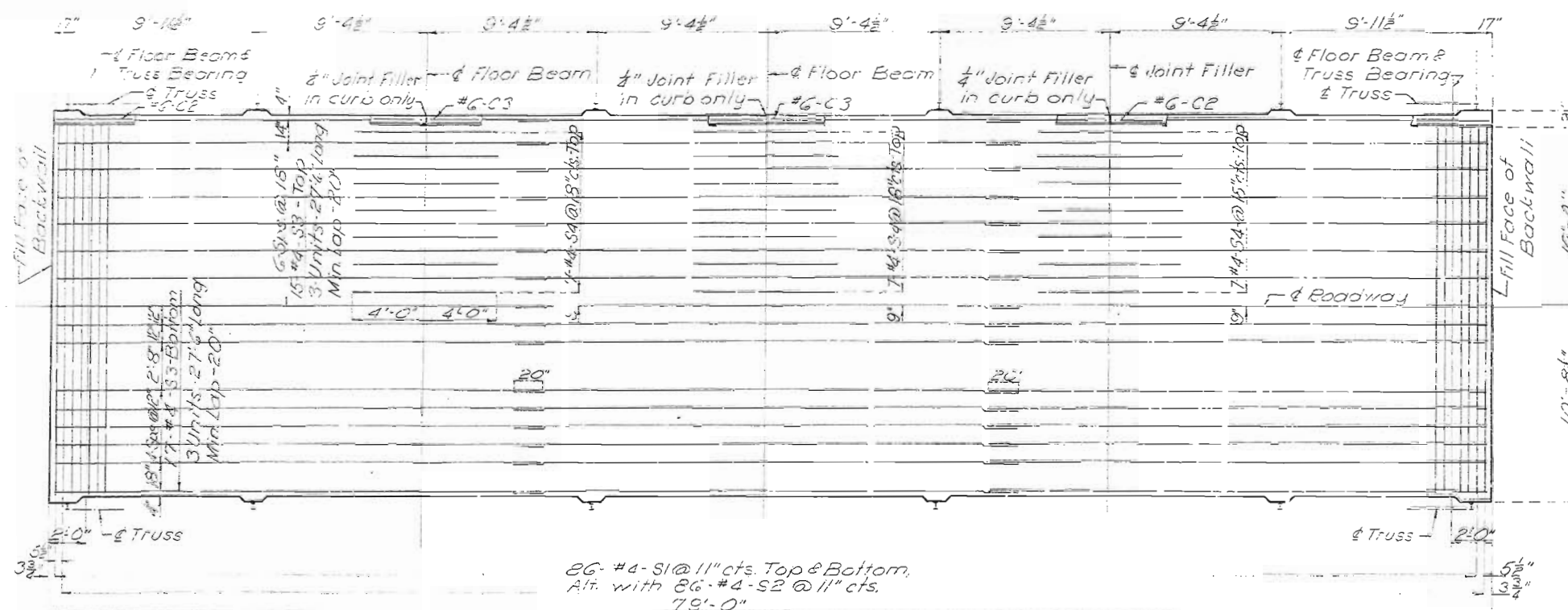
STATE ROAD FROM RTE. NN 5 MILES SOUTH OF RTE 8 - SOUTHWEST  
ABOUT 9.0 MILES S.E. OF KENNETT

PROJECT NO. S-1354(1) (SUU) STA. 176+62.7

DUNKLIN COUNTY

Note: Space dowel bars 1' or approximately 12" centers in curb.

| FED. ROAD<br>DIST. NO. | STATE | FED. AID<br>PROJ. NO. | FISCAL<br>YEAR | SHEET<br>NO. | TOTAL<br>SHEET |
|------------------------|-------|-----------------------|----------------|--------------|----------------|
| 5                      | MO.   | 55555                 | 19             |              |                |



Truss Vert (Old)

8 1/2"

4"

1'-6" x 4" x 5/8" x 10"

1/2" Holes in Truss Vertical

1/2" x 1/2" Vert Slots in L brackets for 5/8" Bolts (Hex Head & Nut)

1'-3 1/2"

10"

Roof Truss (Old)

$L-6'' \times 4'' \times \frac{5}{16}'' \times 4''$

#10 Holes in Truss member  $\frac{1}{8}'' \times \frac{1}{2}''$

Vert Slots in L brackets for Bolts (Hex. Hd & Nut)

$L-3\frac{1}{2}'' \times 4'' \times \frac{1}{2}'' \times 15''$

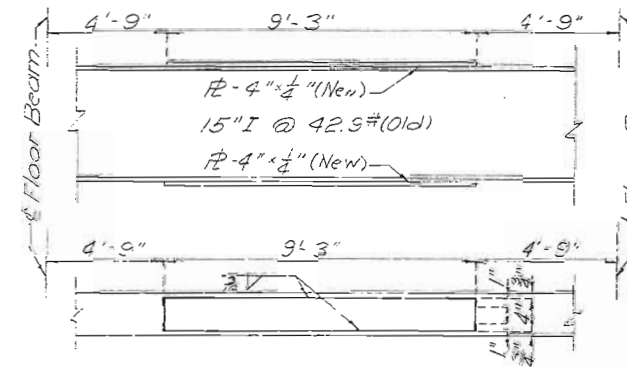
8"

4"

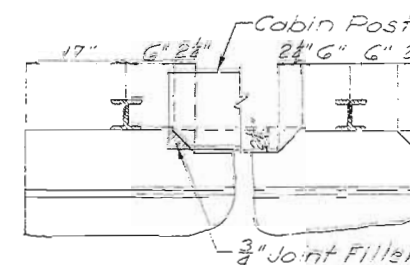
$\frac{5}{16}''$  Rivets

12"

15"

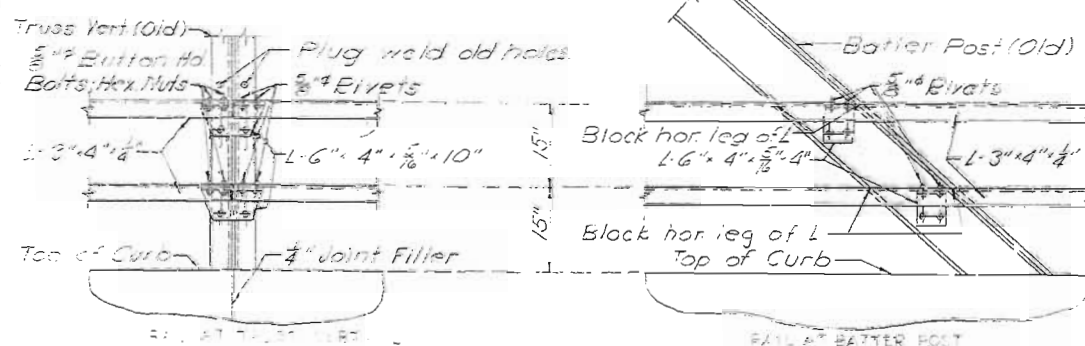
PART SECTION NEAR  
BATTLE POSITION

DETAILS OF WELDED PLATES ON INT. STRINGERS



TYPICAL DETAIL OF CURB  
AND SLAB AT RAILPOST

Note: New steel includes rail, rail brackets, railposts, cover plates, bearing plates, and necessary bolts and rivets.



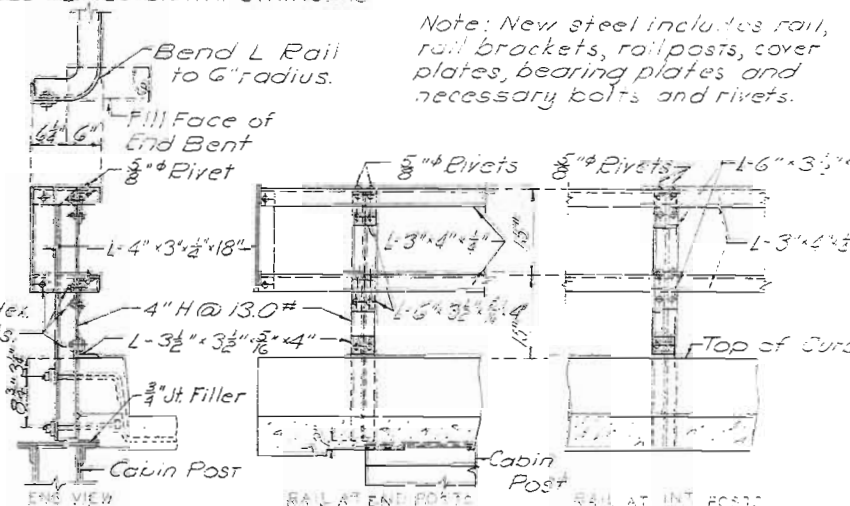
FILE # BATTER POST

Note: Angle rail to be adjusted for horizontal alignment by use of full size metal shims placed between 4" H or truss member and connection. Shims of 2" or thickness to be furnished with structural steel. Cost of shims to be included in price bid for other items.

Notes: Holes for rail connections to truss members to be drilled in field.

DETAILS OF RAIL

Note: This drawing is not to scale. Follow dimensions.

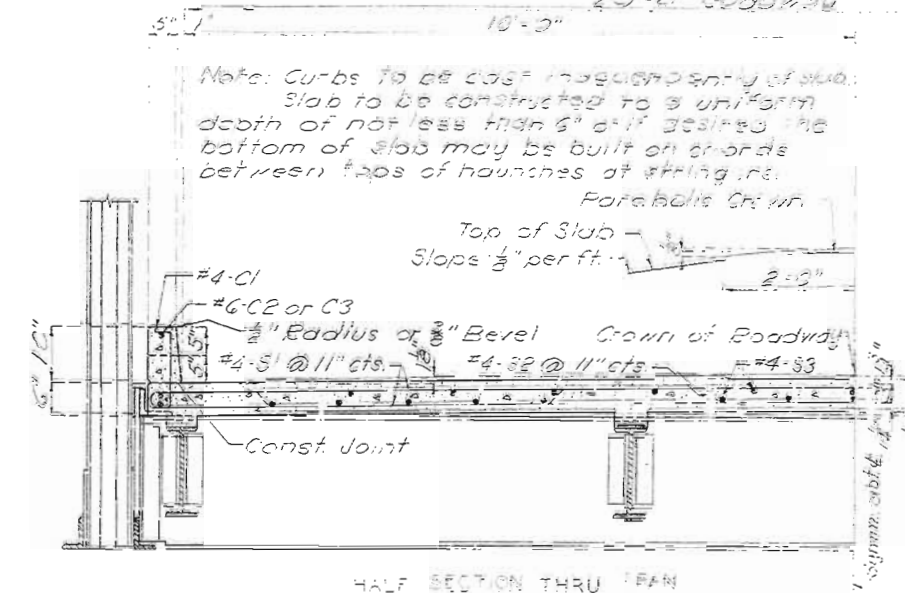


END VIEW

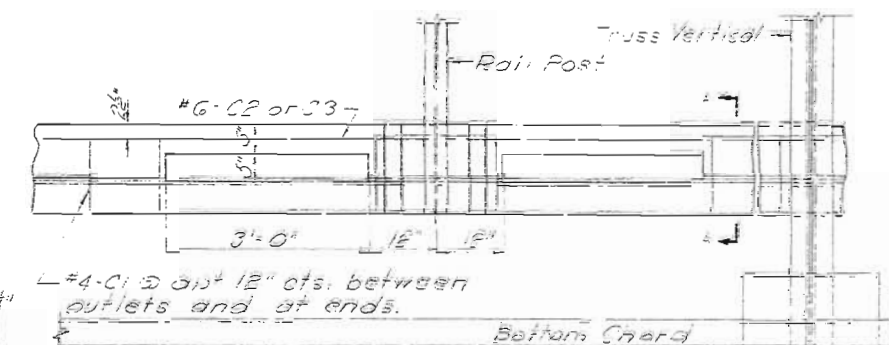
MAIL AT END POSTAGE

DATE AT INT 5053

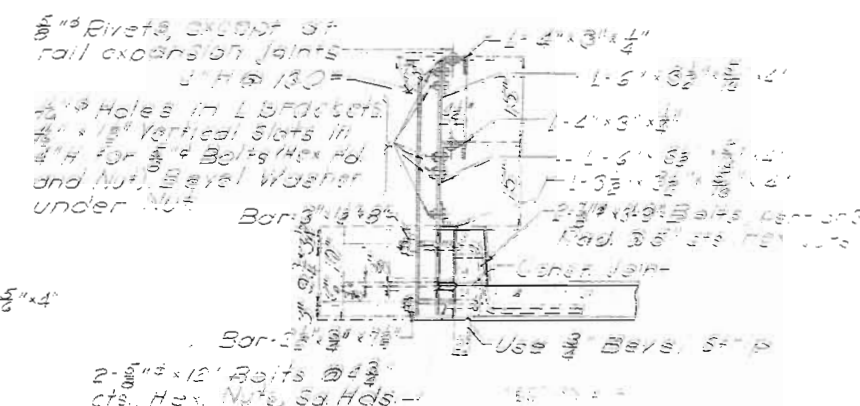
Sheet No. 3 of



HALF SECTION THRU FEATHER



TYPICAL CURB DETAILS



BRIDGE OVER LATERAL DITCH NO. 73

STATE ROAD FROM ROUTE AND 5 MILES SOUTH - ROUTE 68 SOUTHWEST  
ABOUT 5.0 MILES SOUTHEAST OF KENNETT  
PROJECT NO. 5-13540 (SLO) STA 175-627

CLINT COUNTY

1998, 1999, 2000, 2001, 2002, 2003, 2004, 2005, 2006, 2007, 2008, 2009, 2010, 2011, 2012, 2013, 2014, 2015, 2016, 2017, 2018, 2019, 2020, 2021, 2022, 2023, 2024, 2025, 2026, 2027, 2028, 2029, 2030, 2031, 2032, 2033, 2034, 2035, 2036, 2037, 2038, 2039, 2040, 2041, 2042, 2043, 2044, 2045, 2046, 2047, 2048, 2049, 2050, 2051, 2052, 2053, 2054, 2055, 2056, 2057, 2058, 2059, 2060, 2061, 2062, 2063, 2064, 2065, 2066, 2067, 2068, 2069, 2070, 2071, 2072, 2073, 2074, 2075, 2076, 2077, 2078, 2079, 2080, 2081, 2082, 2083, 2084, 2085, 2086, 2087, 2088, 2089, 2090, 2091, 2092, 2093, 2094, 2095, 2096, 2097, 2098, 2099, 2100, 2101, 2102, 2103, 2104, 2105, 2106, 2107, 2108, 2109, 2110, 2111, 2112, 2113, 2114, 2115, 2116, 2117, 2118, 2119, 2120, 2121, 2122, 2123, 2124, 2125, 2126, 2127, 2128, 2129, 2130, 2131, 2132, 2133, 2134, 2135, 2136, 2137, 2138, 2139, 2140, 2141, 2142, 2143, 2144, 2145, 2146, 2147, 2148, 2149, 2150, 2151, 2152, 2153, 2154, 2155, 2156, 2157, 2158, 2159, 2160, 2161, 2162, 2163, 2164, 2165, 2166, 2167, 2168, 2169, 2170, 2171, 2172, 2173, 2174, 2175, 2176, 2177, 2178, 2179, 2180, 2181, 2182, 2183, 2184, 2185, 2186, 2187, 2188, 2189, 2190, 2191, 2192, 2193, 2194, 2195, 2196, 2197, 2198, 2199, 2200, 2201, 2202, 2203, 2204, 2205, 2206, 2207, 2208, 2209, 2210, 2211, 2212, 2213, 2214, 2215, 2216, 2217, 2218, 2219, 2220, 2221, 2222, 2223, 2224, 2225, 2226, 2227, 2228, 2229, 2230, 2231, 2232, 2233, 2234, 2235, 2236, 2237, 2238, 2239, 2240, 2241, 2242, 2243, 2244, 2245, 2246, 2247, 2248, 2249, 2250, 2251, 2252, 2253, 2254, 2255, 2256, 2257, 2258, 2259, 2260, 2261, 2262, 2263, 2264, 2265, 2266, 2267, 2268, 2269, 2270, 2271, 2272, 2273, 2274, 2275, 2276, 2277, 2278, 2279, 2280, 2281, 2282, 2283, 2284, 2285, 2286, 2287, 2288, 2289, 2290, 2291, 2292, 2293, 2294, 2295, 2296, 2297, 2298, 2299, 2300, 2301, 2302, 2303, 2304, 2305, 2306, 2307, 2308, 2309, 2310, 2311, 2312, 2313, 2314, 2315, 2316, 2317, 2318, 2319, 2320, 2321, 2322, 2323, 2324, 2325, 2326, 2327, 2328, 2329, 2330, 2331, 2332, 2333, 2334, 2335, 2336, 2337, 2338, 2339, 2340, 2341, 2342, 2343, 2344, 2345, 2346, 2347, 2348, 2349, 2350, 2351, 2352, 2353, 2354, 2355, 2356, 2357, 2358, 2359, 2360, 2361, 2362, 2363, 2364, 2365, 2366, 2367, 2368, 2369, 2370, 2371, 2372, 2373, 2374, 2375, 2376, 2377, 2378, 2379, 2380, 2381, 2382, 2383, 2384, 2385, 2386, 2387, 2388, 2389, 2390, 2391, 2392, 2393, 2394, 2395, 2396, 2397, 2398, 2399, 2400, 2401, 2402, 2403, 2404, 2405, 2406, 2407, 2408, 2409, 2410, 2411, 2412, 2413, 2414, 2415, 2416, 2417, 2418, 2419, 2420, 2421, 2422, 2423, 2424, 2425, 2426, 2427, 2428, 2429, 2430, 2431, 2432, 2433, 2434, 2435, 2436, 2437, 2438, 2439, 2440, 2441, 2442, 2443, 2444, 2445, 2446, 2447, 2448, 2449, 2450, 2451, 2452, 2453, 2454, 2455, 2456, 2457, 2458, 2459, 2460, 2461, 2462, 2463, 2464, 2465, 2466, 2467, 2468, 2469, 2470, 2471, 2472, 2473, 2474, 2475, 2476, 2477, 2478, 2479, 2480, 2481, 2482, 2483, 2484, 2485, 2486, 2487, 2488, 2489, 2490, 2491, 2492, 2493, 2494, 2495, 2496, 2497, 2498, 2499, 2500, 2501, 2502, 2503, 2504, 2505, 2506, 2507, 2508, 2509, 2510, 2511, 2512, 2513, 2514, 2515, 2516, 2517, 2518, 2519, 2520, 2521, 2522, 2523, 2524, 2525, 2526, 2527, 2528, 2529, 2530, 2531, 2532, 2533, 2534, 2535, 2536, 2537, 2538, 2539, 2540, 2541, 2542, 2543, 2544, 2545, 2546, 2547, 2548, 2549, 2550, 2551, 2552, 2553, 2554, 2555, 2556, 2557, 2558, 2559, 2560, 2561, 2562, 2563, 2564, 2565, 2566, 2567, 2568, 2569, 2570, 2571, 2572, 2573, 2574, 2575, 2576, 2577, 2578, 2579, 2580, 2581, 2582, 2583, 2584, 2585, 2586, 2587, 2588, 2589, 2590, 2591, 2592, 2593, 2594, 2595, 2596, 2597, 2598, 2599, 2600, 2601, 2602, 2603, 2604, 2605, 2606, 2607, 2608, 2609, 2610, 2611, 2612, 2613, 2614, 2615, 2616, 2617, 2618, 2619, 2620, 2621, 2622, 2623, 2624, 2625, 2626, 2627, 2628, 2629, 2630, 2631, 2632, 2633, 2634, 2635, 2636, 2637, 2638, 2639, 2640, 2641, 2642, 2643, 2644, 2645, 2646, 2647, 2648, 2649, 2650, 2651, 2652, 2653, 2654, 2655, 2656, 2657, 2658, 2659, 2660, 2661, 2662, 2663, 2664, 2665, 2666, 2667, 2668, 2669, 2670, 2671, 2672, 2673, 2674, 2675, 2676, 2677, 2678, 2679, 26

COUNTY \_\_\_\_\_

9181544-0

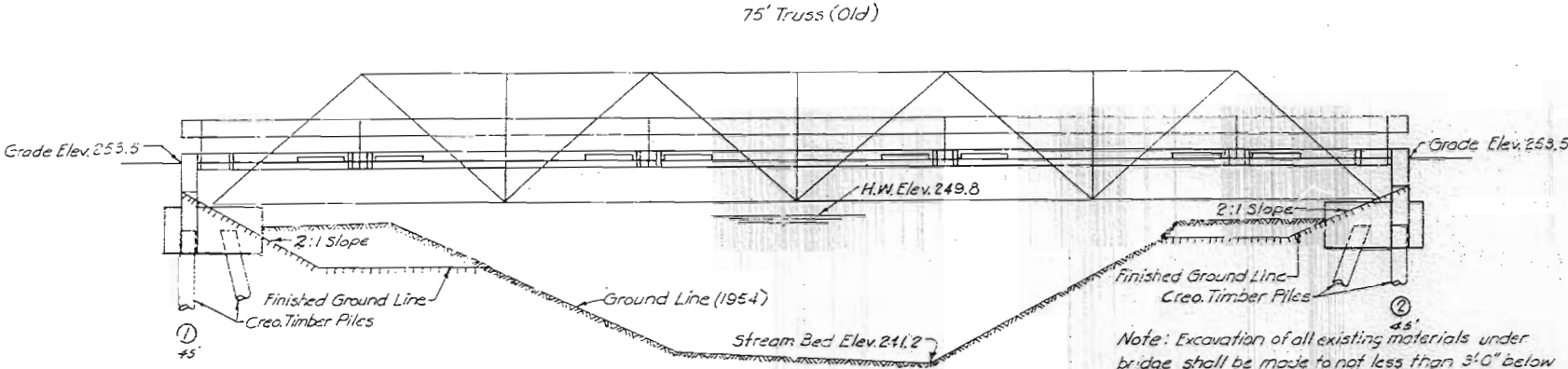
1998



MISSOURI STATE HIGHWAY DEPARTMENT

Use 75' Truss Span from Bridge F-957 stored at Kennett, Mo. See Special Provisions

| FED. ROAD DIST. NO. | STATE | FED. AID PROJ. NO. | FISCAL YEAR | SHEET NO. | TOTAL SHEETS |
|---------------------|-------|--------------------|-------------|-----------|--------------|
| 5                   | MO.   | S-1354(1) (SUU)    | 19          | 13        |              |



Note: Excavation of all existing materials under bridge shall be made to not less than 3'0" below bottom of steel and not less than 4'0" outside of superstructure. Payment for this excavation outside limits of excavation for substructure will be made at unit contract price for Roadway Excavation.

| DATA FOR PILE DRIVING             |       |
|-----------------------------------|-------|
| Bent No.                          | 1 & 2 |
| Plan Capacity Per Pile            | 15.5T |
| Computed Capacity Req'd. Per Pile | 16.2T |
| Min. Penetration (Pile Tip Elev.) | 220.0 |

Note: All piling shall be creosoted timber. Estimated quantities shown on plans are based on the following lengths: 20' @ 45' 0". These indicated lengths are approximate only. Proper lengths to give required bearing and/or penetration will be authorized by the Engineer.

Piles shall be driven to not less than the specified "Plan" capacities, and to the minimum penetrations noted; unless the pile lengths authorized and furnished fail to give "Plan" capacities, in which cases, not less than the "Computed" capacities shall be obtained.

No test piles are to be driven and the Contractor may proceed to order piles to the lengths indicated on plans without further authorization by the Engineer.

As the pile driving proceeds the Engineer may at his election require the contractor to cut off a designated length from the tip end of the piles before they are driven. All such lengths cut from pile tips will be included for payment as pile cut-offs.

GENERAL NOTES:

- Design Specifications A.A.S.H.O. 1953.
- Loading H10-44
- Reinforcing Steel Stress 16,000 psi
- Structural Steel Stress 18,000 psi
- Class "B" Concrete Stress 1,000 psi
- All concrete shall be Class "B"

Where joint filler is specified on the plans it shall conform with the requirements for Premoulded Material for Filler as given in Section 38-19A(1)h of the Standard Specifications.

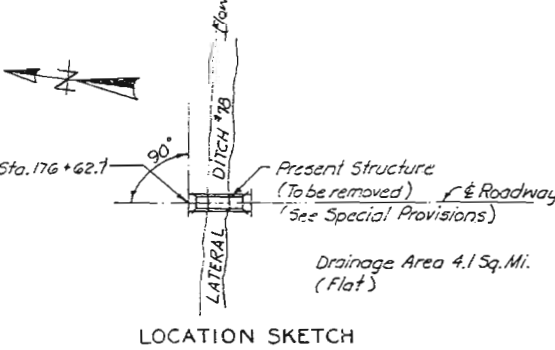
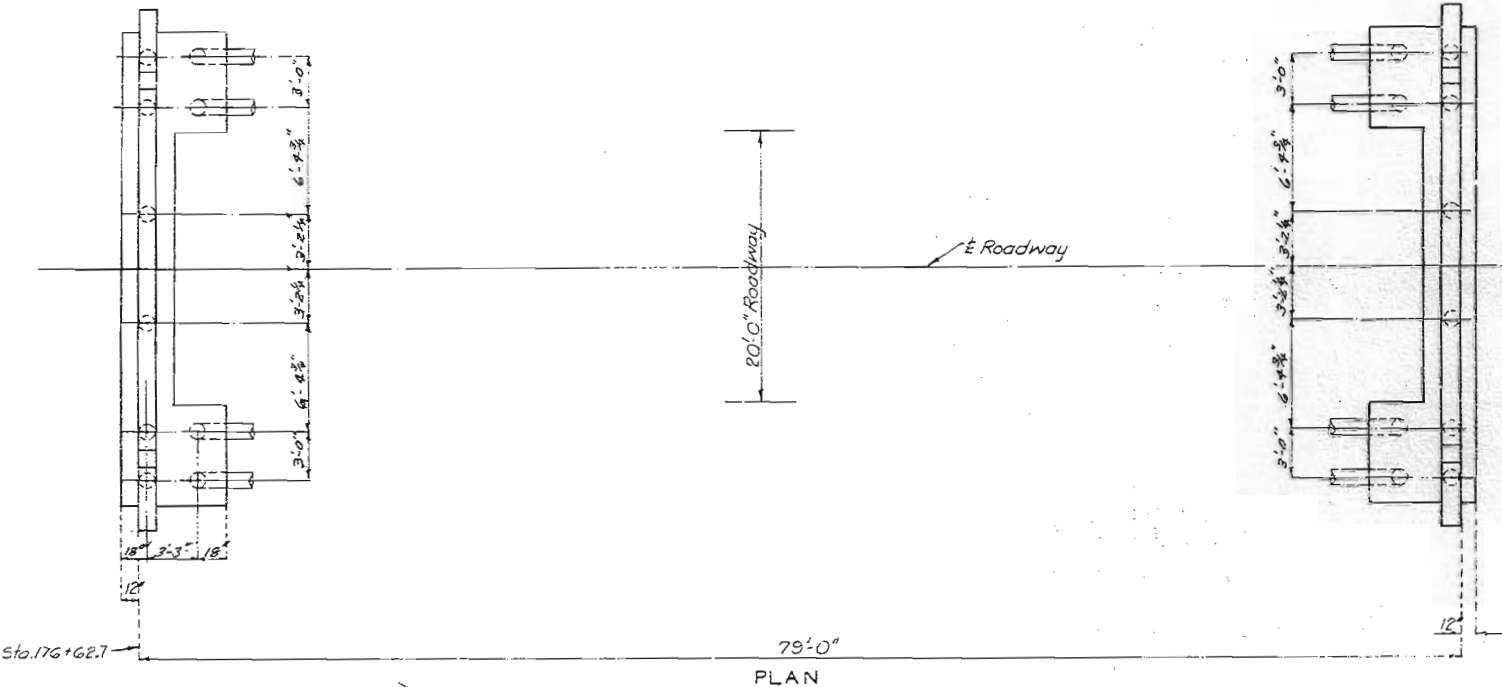
Field connections shall be riveted or if the Contractor desires he may use high tensile steel bolts with carburized washers in place of rivets except for connections noted in handrail details. (See Spec. Prov.)

Paint: Shop, none; Field, contact surfaces of bolted field connections except where high tensile bolts are used, one coat of red lead and surfaces inaccessible after erection three coats of red lead. Red lead required shall be furnished by Contractor. Payment for cleaning and painting such surfaces will be included in unit price bid for Fabricated Structural Steel.

For requirements on welding electrodes see Special Provisions. Qualification of welding operators will be required.

Rivets 3/4"; holes 1/2" except as noted in handrail details.

| COMPLETE BILL OF REINFORCING STEEL |      |        |               | FINAL PLANS                         |  |
|------------------------------------|------|--------|---------------|-------------------------------------|--|
| No.                                | Size | Length | Mark Location | Cutting Diagrams & Bending Sketches |  |
| End Bents No. 1 & 2                |      |        |               |                                     |  |
| 132                                | #6   | 7'9"   | A1 Beam       |                                     |  |
| 4                                  | #6   | 21'6"  | H1 Bk. Wall   |                                     |  |
| 8                                  | #6   | 6'3"   | H2 Wing       |                                     |  |
| 4                                  | #4   | 21'6"  | H3 Bk. W.     |                                     |  |
| 16                                 | #6   | 29'9"  | H4 Beam       |                                     |  |
| 4                                  | #6   | 27'9"  | H5 "          |                                     |  |
| 32                                 | #6   | 4'0"   | H6 Wing       |                                     |  |
| 8                                  | #6   | 11'3"  | T1 "          |                                     |  |
| 88                                 | #4   | 4'0"   | V1 Bk. Wall   |                                     |  |
| 6                                  | #4   | 9'0"   | V2 Wing       |                                     |  |
| 4                                  | #4   | 6'3"   | V3 "          |                                     |  |
| 32                                 | #4   | 11'3"  | V1 Beam       |                                     |  |
| 4                                  | #4   | 7'9"   | V2 "          |                                     |  |
| 8                                  | #2   | 19'9"  | F1 "          |                                     |  |
| Superstructure                     |      |        |               |                                     |  |
| 128                                | #4   | 18"    | C1 Curb       |                                     |  |
| 4                                  | #6   | 20'6"  | C2 "          |                                     |  |
| 4                                  | #6   | 18'6"  | C3 "          |                                     |  |
| 172                                | #4   | 20'9"  | S1 Slab       |                                     |  |
| 86                                 | #4   | 22'6"  | S2 "          |                                     |  |
| 96                                 | #4   | 21'6"  | S3 "          |                                     |  |
| 42                                 | #4   | 8'0"   | S4 "          |                                     |  |



| FINAL QUANTITIES                          |         |           |       |
|---|---------|-----------|-------|
| Item                                      | Substr. | Superstr. | Total |
| Class I Excavation for Structures Cu.Yds. | 56.0    |           | 56.0  |
| Class "B" Concrete Cu.Yds.                | 33.4    | 34.0      | 67.4  |
| Fabricated Structural Steel (New) Lbs.    |         | 4720      | 4720  |
| Fabricated Structural Steel (Old) Lbs.    |         | 48860     | 48860 |
| Reinforcing Steel Lbs.                    | 3600    | 6030      | 9630  |
| Creo. Timber Piles in Place Lin. Ft.      | 615     |           | 615   |
| Creo. Timber Piles Cut-Offs Lin. Ft.      | 295     |           | 295   |
| Removal of Existing Str. Lump Sum         | 1       |           | 1     |

All excavation for bridge will be paid for as Class I Excavation for Structures. See Special Provisions regarding (old) and (new) Structural Steel.

B.M. #14 Elev. 247.64 N.I.S.E.R. 12" Hickory 60' Rt. Sta. 175+75.0  
B.M. Elev. 259.22 D.W. Cor. Br. Wingwall 12' Rt. Sta. 176+62.7

BRIDGE OVER LATERAL DITCH NO. 78

STATE ROAD FROM RTE. N N 3 MILES SOUTH OF RTE. 84 SOUTHWEST

ABOUT 9.0 MILES S.E. OF KENNETT

PROJECT NO. S-1354(1) (SUU) STA. 176+62.7


DUNKLIN COUNTY


SUBMITTED BY J. A. Williams DATE 12/6/1954  
APPROVED BY Rex M. Whitton DATE


Revised Feb. 2, 1955

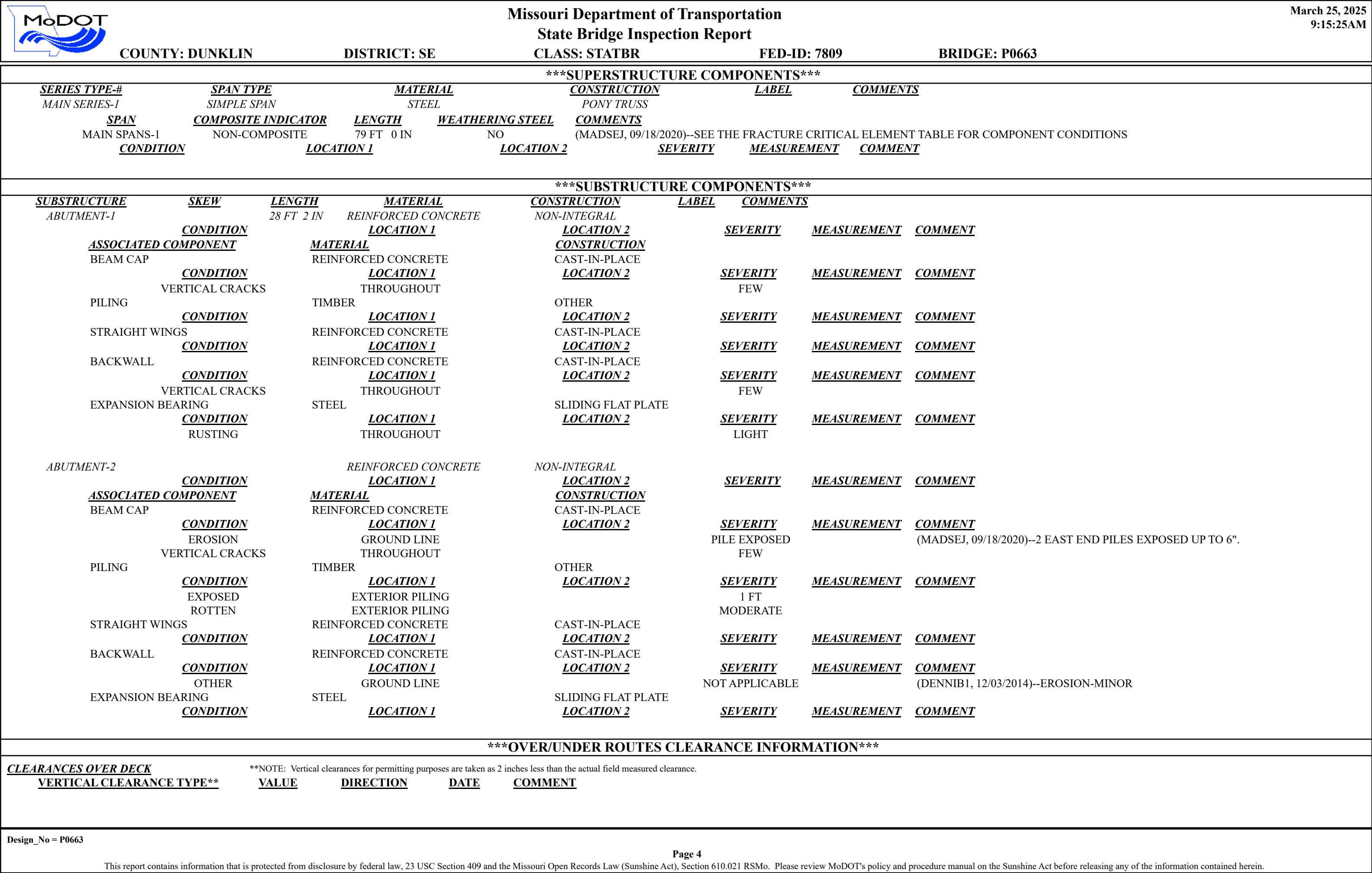
FINAL PLANS

STD C-110R3  
P-663


|   |                  |   |            |  |   |   |                                     |                  |                 |            |                            |                       |               |
|---|------------------|---|------------|--|---|---|-------------------------------------|------------------|-----------------|------------|----------------------------|-----------------------|---------------|
|    |                  | <div>Missouri Department of Transportation</div> <div>State Bridge Inspection Report</div>  |            |  |   | <div>March 25, 2025</div> <div>9:15:25AM</div>  |                                     |                  |                 |            |                            |                       |               |
| COUNTY: DUNKLIN   |                  | DISTRICT: SE  |            | CLASS: STATBR  |   | FED-ID: 7809  |                                     | BRIDGE: P0663    |                 |            |                            |                       |               |
| ***GENERAL STRUCTURE INFORMATION***   |                  |   |            |  |   |   | ***BRIDGE INSPECTION INFORMATION*** |                  |                 |            |                            |                       |               |
| <div>ROUTE: RTUUE</div> <div>FEATURE: LATERAL DTCH NO 78</div> <div>STATUS: P-POSTLOAD</div> <div>LOG MILE: 1.184</div> <div>DETOUR: 99.00 MILES</div> <div>NHS: NO</div> <div>BUILT: 1955</div> <div>REHAB:</div> <div>LOCATION: S 20 T 18 R 10 E</div> <div>LATITUDE: 36 10 42.26 (DMS)</div> <div>LONGITUDE: 90 0 15.88 (DMS)</div>  |                  | <div># SPANS: 1</div> <div>LANES ON: 2</div> <div>LANES UNDER: 0</div> <div>COMPASS DIRECTION: NORTH to SOUTH</div> <div>DIRECTION OF TRAFFIC: 2-WAY TRAF</div> <div>FUNCTIONAL CLASS: RL-MINOR COLLECTOR</div> <div>NBI OWNER: MODOT</div> <div>NBI MAINTAINED: MODOT</div> <div>MAINTENANCE DISTRICT: SE</div> <div>MAINTENANCE COUNTY: DUNKLIN</div> <div>SUB AREA: 7H25</div> |            | <div>PLACE CODE: 34390 INDEPENDENCE</div> <div>LENGTH: 79 FT 0 IN</div> <div>MAXIMUM SPAN: 79 FT 0 IN</div> <div>APPROACH ROADWAY: 18 FT 0 IN</div> <div>CURB TO CURB: 20 FT 0 IN</div> <div>OUT TO OUT: 21 FT 0 IN</div> <div>AADT: 64</div> <div>AADT YEAR: 2024</div> <div>AADT TRUCK: 12.1%</div> <div>FUTURE AADT: 90</div> <div>FUTURE AADT YEAR: 2044</div> |   | <div>DATE: 01/27/2025</div> <div>RESPONSIBILITY: BRIDGEDIV</div> <div>FREQUENCY: 12</div> <div>CALCULATED INTERVAL**:</div> <div>TEAM LEADER: CURT RICKERSON</div> <div>ELEMENT: NO</div> <div>INSPECTOR 2: CHRISTOPHER BYRD (NTL</div> <div>INSPECTOR 4:</div> <div>** When calculated interval exceeds the frequency, a justification comment per BIRM is required.</div> |                                     |                  |                 |            |                            |                       |               |
|   |                  |   |            |  |   | GENERAL INSPECTION COMMENTS   |                                     |                  |                 |            |                            |                       |               |
|   |                  |   |            |  |   |   |                                     |                  |                 |            |                            |                       |               |
| ***FRACTURE CRITICAL INSPECTION INFORMATION***  |                  |   |            |  | ***INDEPTH INSPECTION INFORMATION***  |   |                                     |                  |                 |            |                            |                       |               |
| <div>DATE: 01/27/2025</div> <div>RESPONSIBILITY: BRIDGEDIV</div> <div>FREQUENCY: 12</div> <div>CALCULATED INTERVAL**: 11</div> <div>TEAM LEADER: CURT RICKERSON</div> <div>INSPECTOR 3:</div> <div>INSPECTOR 2: CHRISTOPHER BYRD (NTL</div> <div>INSPECTOR 4:</div> <div>** When calculated interval exceeds the frequency, a justification comment per BIRM is required.</div> |                  |   |            |  | <div>DATE:</div> <div>RESPONSIBILITY:</div> <div>CATEGORY: PONY TRUSS</div> <div>NBI: YES</div> <div>FREQUENCY:</div> <div>CALCULATED INTERVAL**:</div> <div>TEAM LEADER:</div> <div>INSPECTOR 3:</div> <div>INSPECTOR 2:</div> <div>INSPECTOR 4:</div> <div>METHOD: CLIMBER</div> <div>** When calculated interval exceeds the frequency, a justification comment per BIRM is required.</div>                                  |   |                                     |                  |                 |            |                            |                       |               |
| FRACTURE CRITICAL INSPECTION COMMENTS   |                  |   |            |  | INDEPTH INSPECTION COMMENTS   |   |                                     |                  |                 |            |                            |                       |               |
|   |                  |   |            |  |   |   |                                     |                  |                 |            |                            |                       |               |
| ***SPECIAL INSPECTION INFORMATION***  |                  |   |            |  | ***UNDERWATER INSPECTION INFORMATION***   |   |                                     |                  |                 |            |                            |                       |               |
| <div>DATE: 03/05/2019</div> <div>RESPONSIBILITY: BRIDGEDIV</div> <div>FREQUENCY: 999</div> <div>CALCULATED INTERVAL**:</div> <div>TEAM LEADER: TERRY L SHUNAMON</div> <div>INSPECTOR 3:</div> <div>INSPECTOR 2:</div> <div>INSPECTOR 4:</div> <div>** When calculated interval exceeds the frequency, a justification comment per BIRM is required.</div>                       |                  |   |            |  | <div>DATE: 01/27/2025</div> <div>RESPONSIBILITY: BRIDGEDIV</div> <div>FREQUENCY: 60</div> <div>CALCULATED INTERVAL**: 52</div> <div>TEAM LEADER: CURT RICKERSON</div> <div>INSPECTOR 3:</div> <div>INSPECTOR 2:</div> <div>INSPECTOR 4:</div> <div>CATEGORY: DRY</div> <div>NBI: NO</div> <div>METHOD: VISUAL</div> <div>** When calculated interval exceeds the frequency, a justification comment per BIRM is required.</div> |   |                                     |                  |                 |            |                            |                       |               |
| SPECIAL INSPECTION COMMENTS   |                  |   |            |  | UNDERWATER INSPECTION COMMENTS  |   |                                     |                  |                 |            |                            |                       |               |
|   |                  |   |            |  |   |   |                                     |                  |                 |            |                            |                       |               |
| OTHER SPECIAL INSPECTIONS   |                  |   |            |  | OTHER UNDERWATER INSPECTIONS  |   |                                     |                  |                 |            |                            |                       |               |
| <u>DATE</u>   | <u>FREQUENCY</u> | <u>CATEGORY</u>   | <u>NBI</u> | <u>CALCULATED INTERVAL</u>   | <u>RESPONSIBILITY</u>   | <u>METHOD</u>   | <u>DATE</u>                         | <u>FREQUENCY</u> | <u>CATEGORY</u> | <u>NBI</u> | <u>CALCULATED INTERVAL</u> | <u>RESPONSIBILITY</u> | <u>METHOD</u> |
| 07/07/2015  | 120              | CHANNEL CROSS   | NO         |  | DISTRICT  | WT TAPE   |                                     |                  |                 |            |                            |                       |               |
|   |                  | SECTIONS  |            |  |   |   |                                     |                  |                 |            |                            |                       |               |
| 02/25/2009  | 999              | GUSSET PLATES   | NO         |  | BRIDGEDIV   | CLIMBER   |                                     |                  |                 |            |                            |                       |               |
| Design_No = P0663   |                  |   |            |  |   |   |                                     |                  |                 |            |                            |                       |               |
| Page 1  |                  |   |            |  |   |   |                                     |                  |                 |            |                            |                       |               |
| This report contains information that is protected from disclosure by federal law, 23 USC Section 409 and the Missouri Open Records Law (Sunshine Act), Section 610.021 RSMo. Please review MoDOT's policy and procedure manual on the Sunshine Act before releasing any of the information contained herein.   |                  |   |            |  |   |   |                                     |                  |                 |            |                            |                       |               |


|   |  |   |               |                   |                |                 |
|---|--|---|---------------|-------------------|----------------|-----------------|
|    |  | Missouri Department of Transportation   |               |                   | March 25, 2025 |                 |
|   |  | State Bridge Inspection Report  |               |                   | 9:15:25AM      |                 |
| COUNTY: DUNKLIN   |  | DISTRICT: SE  | CLASS: STATBR | FED-ID: 7809      | BRIDGE: P0663  |                 |
| ***STRUCTURE POSTING***   |  |   |               |                   |                |                 |
| APPROVED CATEGORY: S-7  |  | TRUCKS OVER 18 TONS 15 MPH ON BRIDGE.   |               |                   |                |                 |
| Ton 1: 18   |  | Ton 2:  |               | Ton 3:            |                |                 |
| COMMENTS:   |  |   |               |                   |                |                 |
| FIELD CATEGORY: S-7   |  | TRUCKS OVER 18 TONS 15 MPH ON BRIDGE.   |               |                   |                |                 |
| Ton 1: 18   |  | Ton 2:  |               | Ton 3:            |                | PROBLEM:        |
| COMMENTS:   |  | PROBLEM DIRECTION:  |               |                   |                |                 |
| (STEGEC, 08/11/2011)--***   |  | SIGN MISSING ON NORT END IN 2010 ***  |               |                   |                |                 |
| ***GENERAL COMMENTS/MAJOR RATED ITEMS***  |  |   |               |                   |                |                 |
| GENERAL COMMENTS: (BOWDEJ1, 09/05/2008)--(79") PONY TRUSS SPAN  |  |   |               |                   |                |                 |
| [ITEM 58] DECK: 3-SERIOUS CONDITION   |  | COMMENTS: (MADSEJ, 09/18/2020)--APPROXIMATELY 30% SATURATION, PATCHES, AND DELAMINATIONS THROUGHOUT THE DECK                              |               |                   |                |                 |
| RATING : 02/27/2024   |  | (RICKEC, 06/27/2022)--APPROXIMATELY 60% SATURATION OF DECK  |               |                   |                |                 |
|   |  | (WEAVER1, 12/12/2024)--RATING LOWERED TO 3-SERIOUS DUE TO SATURATION HAVING NOW REACHED 100%  |               |                   |                |                 |
| [ITEM 59] SUPER: 4-POOR CONDITION   |  | COMMENTS: (PICKEJ1, 09/15/2020)--HEAVY PACK RUST TOP FLANGE OF STRINGERS LIFTING DECK UP TO 1" W/ ADVANCED SECTION LOSS TO TOP FLANGES OF |               |                   |                |                 |
| RATING : 02/27/2024   |  | EXTERIOR STRINGERS IN A FEW LOCATIONS.  |               |                   |                |                 |
|   |  | (WEAVER1, 02/27/2024)--RATIMG LOWERED TO 4-POOR DUE TO ADVANCED SECTION LOSS UP TO 50% IN THE TOP FLANGES OF SOME OF THE                  |               |                   |                |                 |
|   |  | EXTERIOR STRINGERS  |               |                   |                |                 |
| [ITEM 60] SUB: 5-FAIR CONDITION   |  | COMMENTS: (PICKEJ1, 09/15/2020)--EROSION UNDER ABUTMENT 2, EXPOSING 2 PILES ON SOUTHEAST CORNER. UP TO 6" EXPOSED.                        |               |                   |                |                 |
| RATING : 02/27/2024   |  | (WEAVER1, 02/27/2024)--RATING LOWERED TO 5-FAIR DUE TO SPLITTING AND ROTTING OF THE EXPOSED PILINGS @ ABUTMENT 2 SOUTHEAST                |               |                   |                |                 |
|   |  | CORNER  |               |                   |                |                 |
| [ITEM 61] BANK/CHANNEL: 6-WIDESPREAD MINOR DAMAGE   |  | COMMENTS: (SHUNAT1, 03/07/2019)--MINOR DAMAGE OVER WIDE AREA  |               |                   |                |                 |
| RATING : 05/18/2001   |  |   |               |                   |                |                 |
| [ITEM 113] SCOUR: 8-STABLE FOR CALCULATED   |  | COMMENTS:   |               |                   |                |                 |
| RATING : 05/18/2001   |  |   |               |                   |                |                 |
| EVALUATION TYPE :   |  |   |               |                   |                |                 |
| [ITEM 71] WATERWAY ADEQUACY: DECK ABOVE FLOOD ELEV  |  | COMMENTS:   |               |                   |                |                 |
| RATING : 05/18/2001   |  |   |               |                   |                |                 |
| [ITEM 72] APPRRDWY ALIGNMENT: 6-SATISFACTORY  |  | COMMENTS:   |               |                   |                |                 |
| RATING : 05/18/2001   |  |   |               |                   |                |                 |
| ***RAILING AND APPROACH PAVEMENT COMPONENTS AND RATINGS***  |  |   |               |                   |                |                 |
| [ITEM 36A] BRIDGE RAILING RATING: DOESNT MEET CURRNT STND-0   |  | RATING : 02/18/2004   |               | COMMENTS:         |                |                 |
| <u>MATERIAL</u>   |  | <u>CONSTRUCTION</u>   |               | <u>DIRECTION</u>  |                | <u>COMMENTS</u> |
| REINFORCED CONCRETE   |  | CURB  |               | BOTH              |                |                 |
| STEEL   |  | ANGLE-DOUBLE  |               | BOTH              |                |                 |
| <u>CONDITION</u>  |  | <u>LOCATION 1</u>   |               | <u>LOCATION 2</u> |                | <u>SEVERITY</u> |
| COLLISION DAMAGE  |  | END BENT  |               |                   |                | <u>COMMENT</u>  |
|   |  |   |               |                   |                | MODERATE        |
| [ITEM 36B] TRANSITION RAILING RATING: NOT PROVIDED-0  |  | RATING : 05/18/2001   |               | COMMENTS:         |                |                 |
|   |  |   |               |                   |                |                 |
| [ITEM 36C] APPROACH RAILING RATING: NOT PROVIDED-0  |  | RATING : 05/18/2001   |               | COMMENTS:         |                |                 |
|   |  |   |               |                   |                |                 |
| Design_No = P0663   |  |   |               |                   |                |                 |
| Page 2  |  |   |               |                   |                |                 |
| This report contains information that is protected from disclosure by federal law, 23 USC Section 409 and the Missouri Open Records Law (Sunshine Act), Section 610.021 RSMo. Please review MoDOT's policy and procedure manual on the Sunshine Act before releasing any of the information contained herein. |  |   |               |                   |                |                 |

|   |  |                                       |  |                     |  |                          |  |
|---|--|---------------------------------------|--|---------------------|--|--------------------------|--|
|    |  | Missouri Department of Transportation |  |                     |  | March 25, 2025           |  |
|   |  | State Bridge Inspection Report        |  |                     |  | 9:15:25AM                |  |
| COUNTY: DUNKLIN   |  | DISTRICT: SE                          |  | CLASS: STATBR       |  | FED-ID: 7809             |  |
|   |  |                                       |  | BRIDGE: P0663       |  |                          |  |
| [ITEM 36D] RAIL END TREATMENT RATING: NOT PROVIDED-0  |  |                                       |  | RATING : 05/18/2001 |  | COMMENTS:                |  |
| APPROACH PAVEMENT: *Overall condition assigned for each approach pavemenet component is shown below.  |  |                                       |  |                     |  |                          |  |
| <u>MATERIAL</u>   |  | <u>CONSTRUCTION</u>                   |  | <u>DIRECTION</u>    |  | <u>CONDITION*</u>        |  |
| ASPHALT   |  | BITUMINOUS MAT                        |  | BOTH                |  | GOOD                     |  |
| ***DRAINAGE, EXPANSION DEVICES, BANK/SLOPE, AND DECK PROTECTIVE COMPONENTS***   |  |                                       |  |                     |  |                          |  |
| <u>DECK PROTECTIVE COMPONENTS:</u>  |  |                                       |  |                     |  |                          |  |
| <u>SERIES TYPE-#</u>  |  | <u>COMPONENT</u>                      |  | <u>MATERIAL</u>     |  | <u>CONSTRUCTION</u>      |  |
| MAIN SERIES-1   |  | WEARING SURFACE                       |  | ASPHALT             |  | BITUMINOUS SEAL COAT     |  |
| <u>THICKNESS</u>  |  | <u>YEAR APPLIED</u>                   |  | <u>MANUFACTURE</u>  |  | <u>OVERALL CONDITION</u> |  |
| 3.4 IN  |  | 2015                                  |  |                     |  | FAIR                     |  |
| <u>COMMENT:</u>   |  |                                       |  |                     |  |                          |  |
|   |  | DECK PROTECTION                       |  | NOTAPPLICABLE       |  | NONE                     |  |
| <u>COMMENT:</u>   |  |                                       |  |                     |  |                          |  |
|   |  | MEMBRANE                              |  | NOTAPPLICABLE       |  | NONE                     |  |
| <u>COMMENT:</u>   |  |                                       |  |                     |  |                          |  |
|   |  | SECONDARY DECK PROTECTION             |  | LIQUID SEALANT      |  | INTERNALLY SEALED        |  |
| <u>COMMENT:</u>   |  |                                       |  | 2006                |  | PAVON INDECK             |  |
| <u>DRAINAGE COMPONENTS:</u>   |  |                                       |  |                     |  |                          |  |
| <u>COMPONENT</u>  |  | <u>MATERIAL</u>                       |  | <u>CONSTRUCTION</u> |  | <u>DIRECTION</u>         |  |
| DRAINAGE  |  | REINFORCED CONCRETE                   |  | CURB OUTLET         |  |                          |  |
| <u>EXPANSION DEVICE COMPONENTS:</u>   |  |                                       |  |                     |  |                          |  |
| <u>SUB UNIT-#</u>   |  | <u>SUB LABEL</u>                      |  | <u>COMPONENT</u>    |  | <u>MATERIAL</u>          |  |
|   |  |                                       |  |                     |  |                          |  |
| <u>CONSTRUCTION</u>   |  | <u>GAP</u>                            |  | <u>YEAR APPLIED</u> |  | <u>MANUFACTURE</u>       |  |
|   |  |                                       |  |                     |  |                          |  |
| <u>OVERALL CONDITION</u>  |  |                                       |  |                     |  |                          |  |
| <u>COMMENT:</u>   |  |                                       |  |                     |  |                          |  |
| <u>BANK/SLOPE PROTECTION COMPONENTS:</u>  |  |                                       |  |                     |  |                          |  |
| <u>COMPONENT</u>  |  | <u>MATERIAL</u>                       |  | <u>CONSTRUCTION</u> |  | <u>DIRECTION</u>         |  |
| BANK PROTECTION   |  | EARTH FILL                            |  | BERM                |  | NORTH                    |  |
|   |  |                                       |  |                     |  |                          |  |
| BANK PROTECTION   |  | EARTH FILL                            |  | BERM                |  | SOUTH                    |  |
| ***DECK COMPONENTS***   |  |                                       |  |                     |  |                          |  |
| <u>SPAN TYPE-#</u>  |  | <u>COMPONENT</u>                      |  | <u>MATERIAL</u>     |  | <u>CONSTRUCTION</u>      |  |
| MAIN SPANS-1  |  | DECK                                  |  | REINFORCED CONCRETE |  | CAST-IN-PLACE            |  |
| <u>CONDITION</u>  |  | <u>LOCATION 1</u>                     |  | <u>LOCATION 2</u>   |  | <u>SEVERITY</u>          |  |
| EFFLORESCENCE   |  | THROUGHOUT                            |  |                     |  | LIGHT                    |  |
| SATURATION  |  | THROUGHOUT                            |  |                     |  | MODERATE                 |  |
| SPALLS  |  | BOTTOM                                |  | THROUGHOUT          |  | SMALL                    |  |
| TRANSVERSE CRACKS   |  | THROUGHOUT                            |  |                     |  | FEW                      |  |
| <u>MEASUREMENT</u>  |  |                                       |  |                     |  |                          |  |
| 100 %   |  |                                       |  |                     |  |                          |  |
| <u>COMMENT</u>  |  |                                       |  |                     |  |                          |  |
|   |  |                                       |  |                     |  |                          |  |
| Design_No = P0663   |  |                                       |  |                     |  |                          |  |
| Page 3  |  |                                       |  |                     |  |                          |  |
| This report contains information that is protected from disclosure by federal law, 23 USC Section 409 and the Missouri Open Records Law (Sunshine Act), Section 610.021 RSMo. Please review MoDOT's policy and procedure manual on the Sunshine Act before releasing any of the information contained herein. |  |                                       |  |                     |  |                          |  |





|  |  |  |  |                |   |  |  |   |  |         |  |                            |  |
|--|--|--|--|----------------|---|--|--|---|--|---------|--|----------------------------|--|
|   |  | <div>Missouri Department of Transportation</div> <div>State Bridge Inspection Report</div>                   |  |                |   | <div>March 25, 2025</div> <div>9:15:25AM</div> |  |   |  |         |  |                            |  |
| COUNTY: DUNKLIN  |  | DISTRICT: SE   |  | CLASS: STATBR  |   | FED-ID: 7809                                   |  | BRIDGE: P0663   |  |         |  |                            |  |
| <div><div><div><div><div>CLEARANCES UNDER BRIDGE</div><div>RECORD #</div><div>ROUTE</div><div># LANES</div><div>DIRECTION OF TRAFFIC</div><div>RIGHT LATERAL CLEARANCE</div><div>LEFT LATERAL CLEARANCE</div><div>UR-ID</div></div><div><div>VERTICAL CLEARANCE TYPE**</div><div>VALUE</div><div>DIRECTION</div><div>DATE</div><div>COMMENT</div></div></div><div>**NOTE: Vertical clearances for permitting purposes are taken as 2 inches less than the actual field measured clearance.</div></div></div> |  |  |  |                |   |  |  |   |  |         |  |                            |  |
| ***STRUCTURE PAINT INFORMATION***  |  |  |  |                |   |  |  |   |  |         |  |                            |  |
| CONDITION: POOR  |  | RUST AMOUNT : 8=.1% OF SURFACE RUSTED  |  |                | STEEL TONS : 27   |  |  |   |  |         |  |                            |  |
| <div>ORIGINAL PAINT</div> <div>PAINT TYPE :<br/>NAME :<br/>PAINT COLOR :<br/>PAINT YEAR : 1975<br/>MILS :</div>  |  | <div>CONTRACT REPAINT</div> <div>PAINT TYPE :<br/>NAME :<br/>PAINT COLOR :<br/>PAINT YEAR :<br/>MILS :</div> |  |                | <div>DEPARTMENT REPAINT</div> <div>PAINT TYPE : G SYSTEM<br/>NAME : ZINC/EPOXY/ACRYLIC<br/>PAINT COLOR : GRAY<br/>PAINT YEAR : 2007<br/>MILS : 14</div> |  |  | <div>MANUFACTURE :SHERWIN WILLIAMS<br/>SURFACE PREP :HAND CLEANED</div> |  |         |  |                            |  |
| ***REQUESTED WORK ITEMS***   |  |  |  |                |   |  |  |   |  |         |  |                            |  |
| GENERAL WORK COMMENTS:   |  |  |  |                |   |  |  |   |  |         |  |                            |  |
| RESPONSIBILITY   |  | LOCATION   |  | ITEM           |   | CATEGORY                                       |  | PRIORITY  |  | DATE    |  | WORK ITEM COMMENT          |  |
| ***UTILITY ATTACHMENTS***  |  |  |  |                |   |  |  |   |  |         |  |                            |  |
| UTILITY  |  | OWNER  |  | METHOD         |   | MEASUREMENT TYPE                               |  | VALUE   |  | NUMBER  |  | UTILITY ATTACHMENT COMMENT |  |
| ***PROGRAM NOTES INFORMATION***  |  |  |  |                |   |  |  |   |  |         |  |                            |  |
| YEAR<br>2027   |  | PROJECT #<br>SE0065  |  | MONTH LET<br>1 |   | YEAR LET<br>2027                               |  | ITEMS<br>REPLACE BRIDGE   |  | COMMENT |  |                            |  |
| Design_No = P0663  |  |  |  |                |   |  |  |   |  |         |  |                            |  |
| <div>Page 5</div> <div>This report contains information that is protected from disclosure by federal law, 23 USC Section 409 and the Missouri Open Records Law (Sunshine Act), Section 610.021 RSMo. Please review MoDOT's policy and procedure manual on the Sunshine Act before releasing any of the information contained herein.</div>   |  |  |  |                |   |  |  |   |  |         |  |                            |  |

|  |                           |                    |  |  |                      |   |                     |                    |  |                           |            |                                 |                       |           |                           |                  |           |                     |       |           |             |            |           |                      |  |      |                                 |  |      |                           |  |      |                               |  |      |                        |  |      |   |  |  |               |                  |                |                          |   |  |  |  |
|--|---------------------------|--------------------|--|--|----------------------|---|---------------------|--------------------|--|---------------------------|------------|---------------------------------|-----------------------|-----------|---------------------------|------------------|-----------|---------------------|-------|-----------|-------------|------------|-----------|----------------------|--|------|---------------------------------|--|------|---------------------------|--|------|-------------------------------|--|------|------------------------|--|------|---|--|--|---------------|------------------|----------------|--------------------------|---|--|--|--|
|   |                           |                    | <b>Missouri Department of Transportation</b> |  |                      | <b>March 25, 2025</b>   |                     |                    |  |                           |            |                                 |                       |           |                           |                  |           |                     |       |           |             |            |           |                      |  |      |                                 |  |      |                           |  |      |                               |  |      |                        |  |      |   |  |  |               |                  |                |                          |   |  |  |  |
|  |                           |                    | <b>State Bridge Inspection Report</b>        |  |                      | <b>9:15:25AM</b>  |                     |                    |  |                           |            |                                 |                       |           |                           |                  |           |                     |       |           |             |            |           |                      |  |      |                                 |  |      |                           |  |      |                               |  |      |                        |  |      |   |  |  |               |                  |                |                          |   |  |  |  |
| <b>COUNTY: DUNKLIN</b>   |                           |                    | <b>DISTRICT: SE</b>                          |  | <b>CLASS: STATBR</b> |   | <b>FED-ID: 7809</b> |                    |  |                           |            |                                 |                       |           |                           |                  |           |                     |       |           |             |            |           |                      |  |      |                                 |  |      |                           |  |      |                               |  |      |                        |  |      |   |  |  |               |                  |                |                          |   |  |  |  |
|  |                           |                    |  |  | <b>BRIDGE: P0663</b> |   |                     |                    |  |                           |            |                                 |                       |           |                           |                  |           |                     |       |           |             |            |           |                      |  |      |                                 |  |      |                           |  |      |                               |  |      |                        |  |      |   |  |  |               |                  |                |                          |   |  |  |  |
| <b>***COMPUTER GENERATED RATINGS AND DEFICIENCY ITEMS***</b>   |                           |                    |  |  |                      | <b>***ADVANCED SIGN INFORMATION***</b>  |                     |                    |  |                           |            |                                 |                       |           |                           |                  |           |                     |       |           |             |            |           |                      |  |      |                                 |  |      |                           |  |      |                               |  |      |                        |  |      |   |  |  |               |                  |                |                          |   |  |  |  |
| <div>NOTE: The items listed in this section are updated whenever computer edits are ran on a structure after the inspection updates have been entered in to TMS.</div> <table><tr><td><u>Rated Item</u></td><td><u>Rating</u></td><td><u>Rating Date</u></td></tr><tr><td>[Item 67] Structure Evaluation Rating:</td><td>4-MEETS MINIMUM TOLERABLE</td><td>11/28/2017</td></tr><tr><td>[Item 68] Deck Geometry Rating:</td><td>5-BETTER THAN MINIMUM</td><td>4/10/2015</td></tr><tr><td>[Item 69] Underclearance:</td><td>N-NOT APPLICABLE</td><td>5/18/2001</td></tr><tr><td>Sufficiency Rating:</td><td>40.3%</td><td>2/29/2024</td></tr><tr><td>Deficiency:</td><td>STRUCTURAL</td><td>6/29/2022</td></tr><tr><td>Funding Eligibility:</td><td></td><td>----</td></tr><tr><td>Estimated New Structure Length:</td><td></td><td>----</td></tr><tr><td>Estimated Structure Cost:</td><td></td><td>----</td></tr><tr><td>Estimated Total Project Cost:</td><td></td><td>----</td></tr><tr><td>Year of Cost Estimate:</td><td></td><td>----</td></tr></table> <div>NOTE: The above structure length and cost estimates are computer generated using algorithms in the TMS system. These algorithms are generalized to use NBI items to come up with a new structure length and width to calculate a new area which is taken times a representative cost per square foot. The actual structure size and cost may vary significantly from these numbers once site specific engineering is done.</div> |                           |                    |  |  |                      | <u>Rated Item</u>   | <u>Rating</u>       | <u>Rating Date</u> | [Item 67] Structure Evaluation Rating: | 4-MEETS MINIMUM TOLERABLE | 11/28/2017 | [Item 68] Deck Geometry Rating: | 5-BETTER THAN MINIMUM | 4/10/2015 | [Item 69] Underclearance: | N-NOT APPLICABLE | 5/18/2001 | Sufficiency Rating: | 40.3% | 2/29/2024 | Deficiency: | STRUCTURAL | 6/29/2022 | Funding Eligibility: |  | ---- | Estimated New Structure Length: |  | ---- | Estimated Structure Cost: |  | ---- | Estimated Total Project Cost: |  | ---- | Year of Cost Estimate: |  | ---- | <table><tr><td><b>SIGN #</b></td><td><b>SIGN TYPE</b></td><td><b>PROBLEM</b></td><td><b>PROBLEM DIRECTION</b></td></tr><tr><td>1</td><td></td><td></td><td></td></tr></table> |  |  | <b>SIGN #</b> | <b>SIGN TYPE</b> | <b>PROBLEM</b> | <b>PROBLEM DIRECTION</b> | 1 |  |  |  |
| <u>Rated Item</u>  | <u>Rating</u>             | <u>Rating Date</u> |  |  |                      |   |                     |                    |  |                           |            |                                 |                       |           |                           |                  |           |                     |       |           |             |            |           |                      |  |      |                                 |  |      |                           |  |      |                               |  |      |                        |  |      |   |  |  |               |                  |                |                          |   |  |  |  |
| [Item 67] Structure Evaluation Rating:   | 4-MEETS MINIMUM TOLERABLE | 11/28/2017         |  |  |                      |   |                     |                    |  |                           |            |                                 |                       |           |                           |                  |           |                     |       |           |             |            |           |                      |  |      |                                 |  |      |                           |  |      |                               |  |      |                        |  |      |   |  |  |               |                  |                |                          |   |  |  |  |
| [Item 68] Deck Geometry Rating:  | 5-BETTER THAN MINIMUM     | 4/10/2015          |  |  |                      |   |                     |                    |  |                           |            |                                 |                       |           |                           |                  |           |                     |       |           |             |            |           |                      |  |      |                                 |  |      |                           |  |      |                               |  |      |                        |  |      |   |  |  |               |                  |                |                          |   |  |  |  |
| [Item 69] Underclearance:  | N-NOT APPLICABLE          | 5/18/2001          |  |  |                      |   |                     |                    |  |                           |            |                                 |                       |           |                           |                  |           |                     |       |           |             |            |           |                      |  |      |                                 |  |      |                           |  |      |                               |  |      |                        |  |      |   |  |  |               |                  |                |                          |   |  |  |  |
| Sufficiency Rating:  | 40.3%                     | 2/29/2024          |  |  |                      |   |                     |                    |  |                           |            |                                 |                       |           |                           |                  |           |                     |       |           |             |            |           |                      |  |      |                                 |  |      |                           |  |      |                               |  |      |                        |  |      |   |  |  |               |                  |                |                          |   |  |  |  |
| Deficiency:  | STRUCTURAL                | 6/29/2022          |  |  |                      |   |                     |                    |  |                           |            |                                 |                       |           |                           |                  |           |                     |       |           |             |            |           |                      |  |      |                                 |  |      |                           |  |      |                               |  |      |                        |  |      |   |  |  |               |                  |                |                          |   |  |  |  |
| Funding Eligibility:   |                           | ----               |  |  |                      |   |                     |                    |  |                           |            |                                 |                       |           |                           |                  |           |                     |       |           |             |            |           |                      |  |      |                                 |  |      |                           |  |      |                               |  |      |                        |  |      |   |  |  |               |                  |                |                          |   |  |  |  |
| Estimated New Structure Length:  |                           | ----               |  |  |                      |   |                     |                    |  |                           |            |                                 |                       |           |                           |                  |           |                     |       |           |             |            |           |                      |  |      |                                 |  |      |                           |  |      |                               |  |      |                        |  |      |   |  |  |               |                  |                |                          |   |  |  |  |
| Estimated Structure Cost:  |                           | ----               |  |  |                      |   |                     |                    |  |                           |            |                                 |                       |           |                           |                  |           |                     |       |           |             |            |           |                      |  |      |                                 |  |      |                           |  |      |                               |  |      |                        |  |      |   |  |  |               |                  |                |                          |   |  |  |  |
| Estimated Total Project Cost:  |                           | ----               |  |  |                      |   |                     |                    |  |                           |            |                                 |                       |           |                           |                  |           |                     |       |           |             |            |           |                      |  |      |                                 |  |      |                           |  |      |                               |  |      |                        |  |      |   |  |  |               |                  |                |                          |   |  |  |  |
| Year of Cost Estimate:   |                           | ----               |  |  |                      |   |                     |                    |  |                           |            |                                 |                       |           |                           |                  |           |                     |       |           |             |            |           |                      |  |      |                                 |  |      |                           |  |      |                               |  |      |                        |  |      |   |  |  |               |                  |                |                          |   |  |  |  |
| <b>SIGN #</b>  | <b>SIGN TYPE</b>          | <b>PROBLEM</b>     | <b>PROBLEM DIRECTION</b>                     |  |                      |   |                     |                    |  |                           |            |                                 |                       |           |                           |                  |           |                     |       |           |             |            |           |                      |  |      |                                 |  |      |                           |  |      |                               |  |      |                        |  |      |   |  |  |               |                  |                |                          |   |  |  |  |
| 1  |                           |                    |  |  |                      |   |                     |                    |  |                           |            |                                 |                       |           |                           |                  |           |                     |       |           |             |            |           |                      |  |      |                                 |  |      |                           |  |      |                               |  |      |                        |  |      |   |  |  |               |                  |                |                          |   |  |  |  |
|  |                           |                    |  |  |                      | <b>***OUTFALL INSPECTION INFORMATION***</b>   |                     |                    |  |                           |            |                                 |                       |           |                           |                  |           |                     |       |           |             |            |           |                      |  |      |                                 |  |      |                           |  |      |                               |  |      |                        |  |      |   |  |  |               |                  |                |                          |   |  |  |  |
|  |                           |                    |  |  |                      | <div># OUTFALLS: 2INSPECTOR: CURT RICKERSON</div> <div>STATUS: PASSDATE: 01/27/2025</div> <div>NOTES:</div> |                     |                    |  |                           |            |                                 |                       |           |                           |                  |           |                     |       |           |             |            |           |                      |  |      |                                 |  |      |                           |  |      |                               |  |      |                        |  |      |   |  |  |               |                  |                |                          |   |  |  |  |



Missouri Department of Transportation  
Bridge Inventory and Inspection System  
Structural Inventory & Appraisal Sheet

March 25, 2025  
9:11:23am

COUNTY : DUNKLIN      BRIDGE : P0663      REVIEW STATUS : CONVERTED      NBI STATUS : T  
RECORD TYPE :      ROUTE CARRIED 'ON' STRUCT      RUN DATE : 3/7/2025      SUBMITTAL YEAR : 2025

| GENERAL STRUCTURE INFORMATION  |                         |                           | ROUTE DESIGNATION INFORMATION   |                             |                           |
|--------------------------------|-------------------------|---------------------------|---------------------------------|-----------------------------|---------------------------|
| 1                              | State                   | MISSOURI                  | 5A                              | Record Type                 | ROUTE CARRIED 'ON' STRUCT |
| 2                              | District                | SE                        | 5B                              | Route Signing Prefix        | MO                        |
| 3                              | County                  | DUNKLIN                   | 5C                              | Designated Level of Service | MAINLINE                  |
| 8                              | Federal ID No.          | 7809                      | 5D                              | Route Number                | 000UU                     |
| 27                             | Year Built              | 1955                      | 5E                              | Directional Suffix          | NOT APPLICABLE            |
| 106                            | Year Reconstructed      | 0                         | 7                               | Facility Carried            | RT UU E                   |
| 42A                            | Type of Service On      | HIGHWAY                   | 12                              | Base Hwy. Network           | NO                        |
| 21                             | Structure Maintenance   | STATE HIGHWAY AGENCY      | 13A                             | LRS Inventory Route No.     |                           |
| 22                             | Structure Owner         | STATE HIGHWAY AGENCY      | 13B                             | Subroute No.                |                           |
| 33                             | Br. Median Code         | NO MEDIAN                 | 20                              | Toll Status                 | ON FREE ROAD              |
| 37                             | Historical Significance | NOT ELIGIBLE FOR NR OF HP | 26                              | Functional Classification   | 08-RURAL MINOR COLLECTOR  |
| 101                            | Parallel Struc Desg     | NONE EXISTS               | 28A                             | Lanes on Structure          | 02                        |
| 103                            | Temporary Structure     | NOT TEMPORARY             | 100                             | STRAHNET Designation        | RTE NOT A DEFENSE HWY     |
| 112                            | NBIS Bridge Length      | YES                       | 104                             | National Highway System     | NOT ON NHS                |
|                                |                         |                           | 105                             | Federal Lands Highway       | NOT APPLICABLE            |
|                                |                         |                           | 110                             | Designated Nat. Network     | NO                        |
| STRUCTURE LOCATION INFORMATION |                         |                           | STRUCTURE TRAFFIC INFORMATION   |                             |                           |
| 4                              | Place                   | INDEPENDENCE              | 29                              | AADT                        | 64                        |
|                                | Code                    | 34390                     | 30                              | AADT Year                   | 2024                      |
| 9                              | Location                | S 20 T 18 N R 10 E        | 102                             | Direction of Traffic        | 2-WAY TRAFFIC             |
| 11                             | Milepoint               | 1.19 miles                | 109                             | AADT Truck Percent          | 12%                       |
| 16                             | Latitude                | 36 D 10 M 42 S            | 114                             | Future AADT                 | 90                        |
| 17                             | Longitude               | 90 D 0 M 16 S             | 115                             | Future AADT Year            | 2044                      |
| UNDERRECORD INFORMATION        |                         |                           | STRUCTURE GEOMETRIC INFORMATION |                             |                           |
| 6                              | Features Intersected    | LATERAL DTCH NO 78        | 10                              | Inventory Rte. Vert. Clear  | 99 Ft. 99 In.             |
| 42B                            | Type of Service Under   | WATERWAY                  | 19                              | By pass Detour Length       | 124.38 miles              |
| 28B                            | Lanes Under Structure   | 00                        | 32                              | Approach Roadway Width      | 18 Ft. 1 In.              |
| 54A                            | Vert. Clearance Ref.    | N/A                       | 34                              | Skew                        | 0.00 Degrees              |
| 54B                            | Vert. Clearance         | 0 Ft. 0 In.               | 35                              | Struct. Flared              | NO                        |
| 55A                            | Rt. Lat Clear Ref.      | N/A                       | 47                              | Total Horiz. Clear          | 20 Ft. 0 In.              |
| 55B                            | Rt. Lat Clearance       | 0 Ft. 0 In.               | 48                              | Maximum Span Length         | 79 Ft. 1 In.              |
| 56                             | Left Lat Clearance      | 0 Ft. 0 In.               | 49                              | Structure Length            | 79 Ft. 1 In.              |
| 38                             | Navigation Control      | PERMIT NOT REQ            | 50A                             | Left Curb/Sidewalk Width    | 0 Ft. 0 In.               |
| 39                             | Nav Vertical Clear      | 0 Ft. 0 In.               | 50B                             | Right Curb/Sidewalk Width   | 0 Ft. 0 In.               |
| 40                             | Nav Horizontal Clear    | 0 Ft. 0 In.               | 51                              | Curb to Curb Br. Width      | 20 Ft. 0 In.              |
| 111                            | Nav. Pier Protection    |                           | 52                              | Deck Width (Out-Out)        | 20 Ft. 12 In.             |
| 116                            | Nav. Cl. Vert. Clear    |                           | 53                              | Vert. Clearance Over Deck   | 99 Ft. 99 In.             |

Design\_No = p0663 and Inventory\_Appraisal\_Submittal\_Year = 2025



Missouri Department of Transportation  
Bridge Inventory and Inspection System  
Structural Inventory & Appraisal Sheet

March 25, 2025  
9:11:23am

COUNTY : DUNKLIN      BRIDGE : P0663      REVIEW STATUS : CONVERTED      NBI STATUS : T  
RECORD TYPE : ROUTE CARRIED 'ON' STRUCT      RUN DATE : 3/7/2025      SUBMITTAL YEAR : 2025

| LOAD RATING AND POSTING INFORMATION   |                             |                           | MATERIAL/CONSTRUCTION INFORMATION     |  |                |
|---------------------------------------|-----------------------------|---------------------------|---------------------------------------|--|----------------|
| 31                                    | Design Load                 | H 10                      | 43A                                   | Main Struc. Mat type                     | STEEL          |
| 41                                    | Structure Status            | POSTED FOR LOAD           | 43B                                   | Main struc Constr. Type                  | TRUSS - THRU   |
| 63                                    | Oper. Rating Meth.          | LOAD FACTOR               | 45                                    | # of Main Spans                          | 1              |
| 64                                    | Operating Rating            | 25 Tons.                  | 44A                                   | Appr Struc. Mat type                     | 000            |
| 65                                    | Inventory Rating Meth       | LOAD FACTOR               | 44B                                   | Appr Struc. Cnstr. type                  | 000            |
| 66                                    | Inventory Rating            | 16 Tons.                  | 46                                    | # of Approach Span                       | 0              |
| 70                                    | Bridge Posting Code         | 10.0-19.9% BELOW          | 107                                   | Deck Mat/Constr.                         | 1 CONCRETE CIP |
|                                       |                             |                           | 108A                                  | Wear Surf Mat/Constr.                    | 6 BITUMINOUS   |
|                                       |                             |                           | 108B                                  | Membrane Mat/Constr.                     | 0 NONE         |
|                                       |                             |                           | 108C                                  | Deck Protect Mat/Constr.                 | 0 NONE         |
| PROPOSED IMPROVEMENT INFORMATION      |                             |                           | CONDITION RATING INFORMATION          |  |                |
|                                       | Sufficiency Rating          | 40.3 Percent              | 58                                    | Deck Cond. Rating                        | 3              |
|                                       | Deficiency Rating           | STRUCTURAL                | 59                                    | Superstructure Cond. Rating              | 4              |
|                                       | Funding Eligibility         | FULL                      | 60                                    | Substructure Cond. Rating                | 5              |
| 75A                                   | Proposed Work               | REPLACEMENT SUBSTND LOAD  | 61                                    | Channel /Channel Protection Cond. Rating | 6              |
| 75B                                   | Work Done By                | Contract                  | 62                                    | Culvert Cond. Rating                     | N              |
| 76                                    | New Struc Length            | 108 Ft. 3 In.             |                                       |  |                |
| 94                                    | Struc Improve Cost          | \$ 561,000                | INSPECTION INFORMATION                |  |                |
| 95                                    | Roadway Improve Cost        | \$ 56,000                 | 90                                    | Gen. Insp Date                           | 1 / 25         |
| 96                                    | Total Project Cost          | \$ 842,000                | 91                                    | Gen. Insp. Frequency                     | 12 Months      |
| 97                                    | Year of Cost Estimates      | 2025                      | 92A                                   | Frac. Critical Inspection                | Y Months 12    |
|                                       |                             |                           | 93A                                   | Frac. Critical Insp. Date                | 1 / 25         |
| APPRAISAL RATING INFORMATION          |                             |                           | 92B                                   | Underwater Inspection                    | N Months       |
| 36A                                   | Br. Rail App. Rating        | DOES NOT MEET ACCEPT STND | 93B                                   | Underwater Insp. Date                    |                |
| 36B                                   | Transition Rail App. Rating | DOES NOT MEET ACCEPT STND | 92C                                   | Special Inspection                       | N Months       |
| 36C                                   | Approach Rail App. Rating   | DOES NOT MEET ACCEPT STND | 93C                                   | Special Inspection Date                  |                |
| 36D                                   | Rail End Treat. App. Rating | DOES NOT MEET ACCEPT STND |                                       |  |                |
| 67                                    | Struc Eval App. Rating      | 4                         | BORDER BRIDGE INFORMATION             |  |                |
| 68                                    | Deck Geometry App. Rating   | 5                         | 98                                    | Neighboring State Code                   |                |
| 69                                    | Underclearance App. Rating  | N                         | 98B                                   | Neighboring State % Respon               |                |
| 71                                    | Waterway Adeq. App. Rating  | 8                         | 99                                    | Neighboring State Struc. No.             |                |
| 72                                    | Approach Road App. Rating   | 6                         |                                       |  |                |
| 113                                   | Scour Assess App. Rating    | 8                         | FIELD POSTING INFORMATION             |  |                |
| APPROVED POSTING INFORMATION          |                             |                           |                                       |  |                |
| Approved Posting Category S-7         |                             |                           | Field Posting Category S-7            |  |                |
|                                       |                             | Ton1 Ton2 Ton3            |                                       |  | Ton1 Ton2 Ton3 |
| Tonnage Values for Posting Sign 18    |                             |                           | Tonnage Values for Posting Sign 18    |  |                |
| General Text for Posting Sign         |                             |                           | General Text for Posting Sign         |  |                |
| TRUCKS OVER 18 TONS 15 MPH ON BRIDGE. |                             |                           | TRUCKS OVER 18 TONS 15 MPH ON BRIDGE. |  |                |

Design\_No = p0663 and Inventory\_Appraisal\_Submittal\_Year = 2025