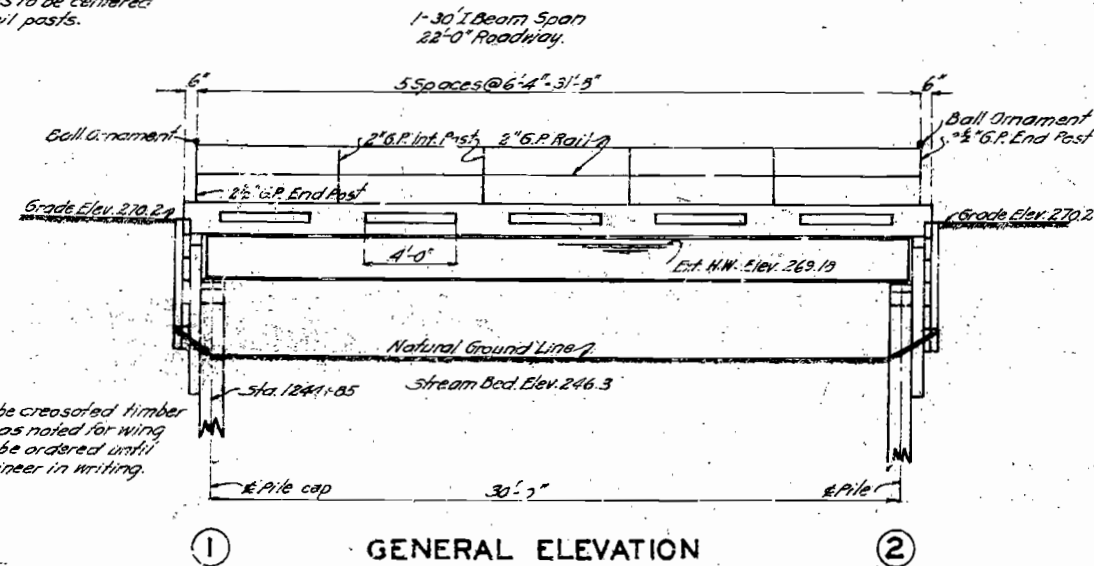


# MISSOURI STATE HIGHWAY DEPARTMENT

FED. ROAD DIST. NO.	STATE	FED. AID PROJ. NO.	FISCAL YEAR	SHEET NO.	TOTAL SHEETS
5	MO.	R25-544	193		

Note: Outlets to be centered between rail posts.



Note: All piling to be creosoted timber 30'-0" long except as noted for wing piles. No piling to be ordered until authorized by Engineer in writing.

BILL OF REINFORCING STEEL				
No.	Size	Length	Wt.	Location
40	3/8"	12'	01	Curb.
6	3/4"	32'-3"	02	
152	3/8"	23'-3"	51	Slab
32	3/8"	31'-3"	52	

Note: Dimensions given are along centerline of lots and are for computed lengths.

## GENERAL NOTES:

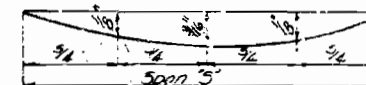
All concrete to be 1:2:5 1/2 mix "X".  
 Exposed edges to be beveled 1/2" where no other device noted.  
 All piling to be driven to full penetration if possible and to sustain load of 20 tons per pile.  
 All timber and piling to be creosoted.  
 All timber to be Douglas Fir, dense structural, or Southern Yellow Pine, dense heart. All timber rough sawed except as noted in timber bill for pile caps. Slight variations in sawing to be in accordance with grading rules. All timber cut to lengths, shaped and bored as shown before creosoting. Backing plank are all billed 6" long, and are to be fitted and cut in field.  
 When bolts with countersunk heads are indicated on plans cut washers shall be used under heads. O.G. washers shall be used under heads of all other bolts and under nuts of all bolts.  
 Cost of substructure hardware to be included in price bid for timber in place.  
 Beams with fastenings, saggers, and cap plate on end bents with fastenings will be paid for as structural steel.  
 Rivets 3/4" Holes 1 1/8" Field connections riveted.  
 Two name plates, type 5, as shown on sheet S818 to be furnished and placed by contractor.  
 Cost of name plates to be included in price bid for other items.  
 Bolt holes for drift pins shall be drilled and countersunk before installation.  
 All other field holes in timber shall be drilled and countersunk before installation.  
 See "Specs" Provisions in regard to permissible substitution of materials.  
 Bridge excavation will be allowed for end bents within horizontal limits shown and noted on "Plan or End Bent" sheet No. 2. This excavation will be computed from existing ground line to bottom end of 6" G backing supports.  
 Paint Shop Note: Field Surfaces inaccessible after erection four coats of red lead. No other paint to be applied by contractor. All paint required will be furnished by the State Highway Department.

Note: This drawing is not to scale. Follow dimensions.

SUBSTRUCTURE TIMBER BILL				
PIECE	NO.	SIZE	LENGTH	REMARKS
Backing Plank	2	4"x12"	19'-8"	Cut to Length
"	2	4"x12"	25'-4"	" " "
"	2	4"x12"	18'-8"	Cut to length & shape
"	2	4"x12"	25'-4"	" " "
"	2	4"x12"	17'-2"	" " "
"	2	4"x12"	23'-10"	" " "
"	2	4"x12"	19'-8"	" " "
"	2	4"x12"	22'-4"	" " "
"	2	4"x12"	14'-2"	" " "
"	2	4"x12"	24'-11"	" " "
Edge Support	1	4"x12"	11'-11"	" " "
Shoulder Plank	4	4"x12"	3'-9"	" " "
Backing Support	8	6"x6"	6'-6"	" " "
"	4	6"x6"	4'-0"	" " "
Backing Support Cap	2	6"x6"	23'-7"	Cut to length
Pile Cap	2	12"x12"	22'-6"	Cut to length *

\* S2S to exactly 1 1/2" depth.

Note: Pile caps to be classified as "Beams and Stringers". All other timber to be classified as "Joists and Plank".



Note: Floor slab to be brought to grade and dead load deflection taken care of by increasing slab thickness. Depth of slab at outside face of curb to be kept uniform and bottom surface of slab warped between curb and outside beam to obtain required thickness at beam. Payment will be allowed for additional concrete required for thickening slab. This additional concrete is included in Estimated Quantities.

## DEAD LOAD DEFLECTION DIAGRAM

ESTIMATED QUANTITIES			
	CU YDS	100 LB	100 LB
Excavation Class 1	35	35	
Concrete 1:2:3 1/2 mix "X"	17.8	17.8	
Fabricated Structural Steel	11560		11560
Reinforcing Steel	5060		5060
Creosoted Timber Piles	300		300
Creosoted Timber Pile Cut-offs	36		36
Creosoted Timber	2622		2622
Gas Pipe Handrail	157		157

Note: All bridge excavation will be paid for as Class 1 Bridge Excavation.

B.M. Elev. 267.13 - Nail in Road 14" Elm. 160' Rt. of Sta. 1252+88.

## BRIDGE OVER SLOUGH

STATE ROAD FROM MC. GUIRE TO WHITE OAK

ABOUT 1.5 MILE SOUTH OF FRISBEE

PROJECT NO. R25-S44 STA. 1244+85 FINISHED

DUNKLIN COUNTY

SUBMITTED BY: T.R. Lark DATE: 6/15/31

APPROVED BY: T.H. Cutler DATE: 6/15/31

STD-S818

J-854

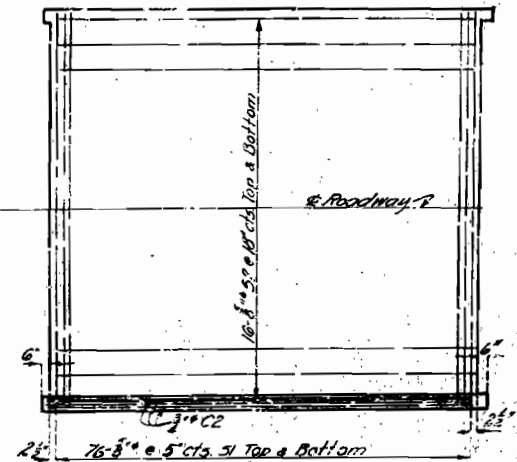
Sheet No. 1 of 2

## LOCATION SKETCH

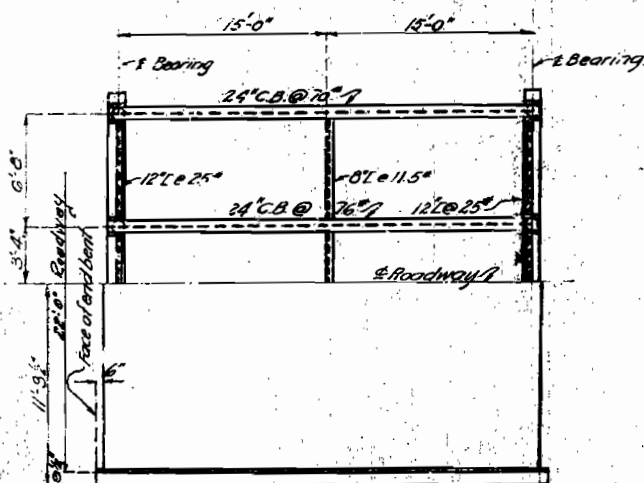
Drawn June 1891 by A.O.U.-H.E.U.  
 Traced May 1931 by G.W.  
 Checked June 1931 by T.H.U.

# MISSOURI STATE HIGHWAY DEPARTMENT

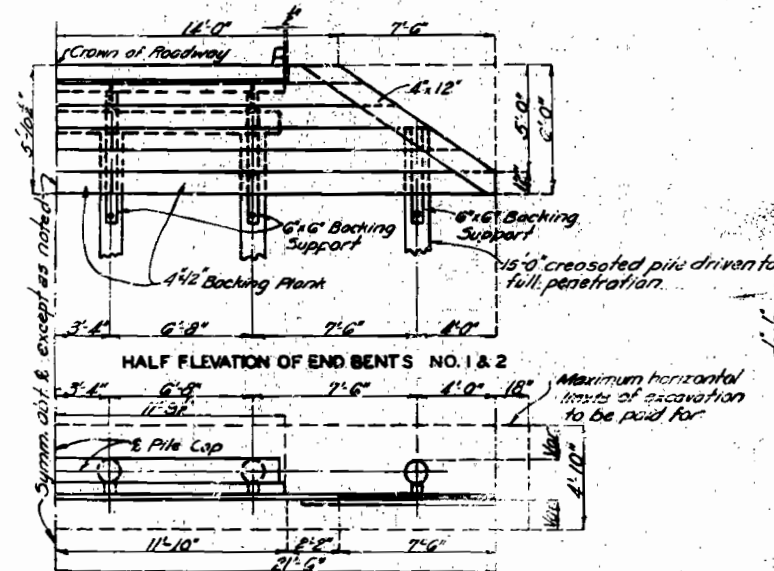
FED. ROAD DIST. NO.	STATE	FED. AID PROJ. NO.	FISCAL YEAR	SHEET NO.	TOTAL SHEETS
5	MO.	R25-544	193		



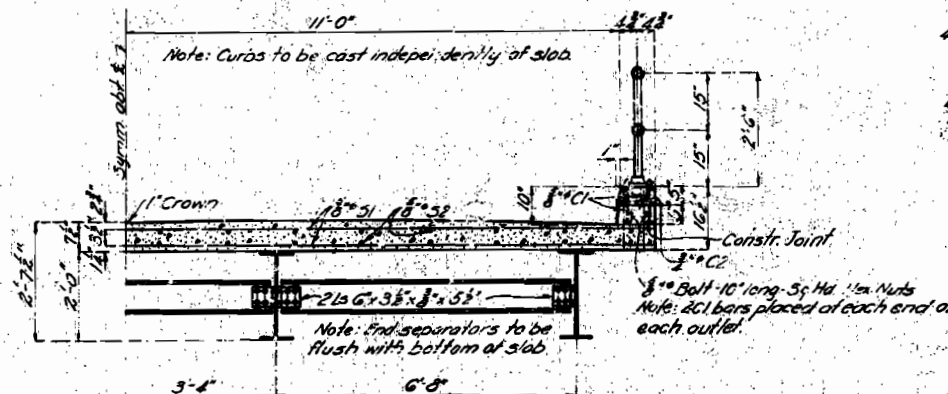
PLAN SHOWING REINFORCEMENT



PART PLAN

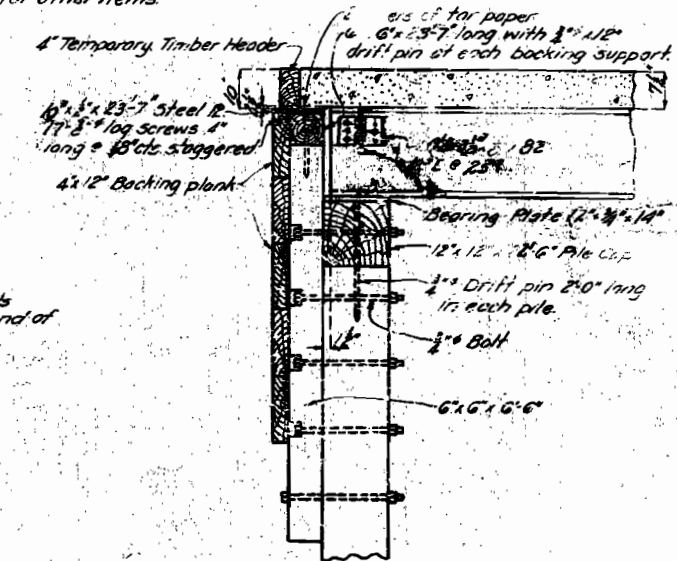


HALF PLAN OF END BENTS NO. 1 & 2



HALF SECTION THRU SPAN

Notes: Cast of timber header to be included in price bid for other items.

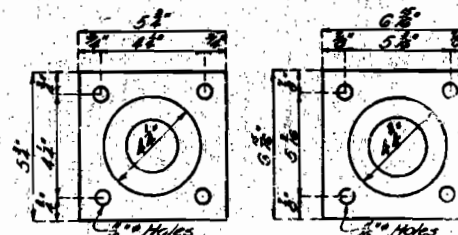


SECTION THRU END BENT AT C

Note: Outlets to be centered between rail posts.



PART ELEVATION OF OUTLET



DETAILS OF FLOOR FLANGES

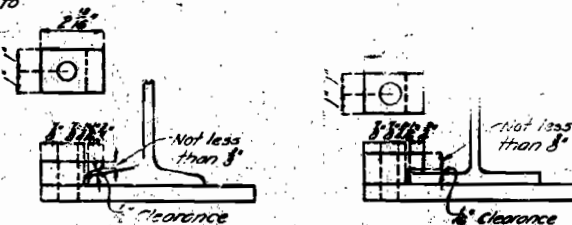
Note: Any irregularity in alignment of piling in end bents to be corrected by facing the piling to receive the 6x6 backing support or by varying the thickness of the backing support such as to place the surface of the backing in a true plane and eliminate any strain on the backing plank. Splice in backing plank to be made at center of 6x6 backing support and to be alternated on the two intermediate supports.

PERMISSIBLE BEAM SUBSTITUTIONS			
Outside Beam	24' CB @ 70"	24' T @ 70"	24' B @ 70"
Inside Beam	24' CB @ 70"	24' T @ 90"	24' B @ 90"

Note: See Special Provisions in regard to permissible substitutions and basis of payment.



DETAILS OF BEVEL FOR CONSTRUCTION JOINT AT CURB

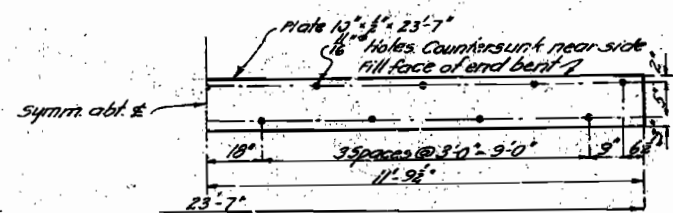


DETAILS OF FLANGE CLAMPS

Note: Cast iron clamps used on bearing plates to have 1/2" clearance of flange of beam to allow for expansion. All clamps to have 3" gored holes with two clamps only on each I-beam at pile caps on end bents.

DETAILS OF BEARINGS ON PILE CAP

Note: This drawing is not to scale. Follow dimensions.



END BENT CAP PLATE

## BRIDGE OVER SLOUGH

STATE ROAD FROM MC. GUIRE TO WHITE OAK  
ABOUT 1.5 MILE SOUTH OF FRISBEE  
PROJECT NO. R25-544 STA. 1244+85

DUNKLIN COUNTY


SUBMITTED BY: *MR. Joyce* DATE: 6/15/31  
APPROVED BY: *T. H. Butler* DATE: 6/15/31


STD. 5818  
J-854


13

Drawn June 1931 by A.O.U.-H.E.U.  
Traced May 1931 by G.W.  
Checked June 1931 by T.H.M.


Sheet No. 2 of 2


		<div>Missouri Department of Transportation</div> <div>State Bridge Inspection Report</div>				<div>March 25, 2025</div> <div>9:17:42AM</div>			
COUNTY: DUNKLIN		DISTRICT: SE		CLASS: STATBR		FED-ID: 5556		BRIDGE: J0854	
***GENERAL STRUCTURE INFORMATION***							***BRIDGE INSPECTION INFORMATION***		
<div>ROUTE: MO153S</div> <div>FEATURE: SLU</div> <div>STATUS: A-OPEN</div> <div>LOG MILE: 46.766</div> <div>DETOUR: 11.00 MILES</div> <div>NHS: NO</div> <div>BUILT: 1931</div> <div>REHAB:</div> <div>LOCATION: S 31 T 20 R 10 E</div> <div>LATITUDE: 36 19 50.29 (DMS)</div> <div>LONGITUDE: 90 1 29.79 (DMS)</div>		<div># SPANS: 1</div> <div>LANES ON: 2</div> <div>LANES UNDER: 0</div> <div>COMPASS DIRECTION: WEST to EAST</div> <div>DIRECTION OF TRAFFIC: 2-WAY TRAF</div> <div>FUNCTIONAL CLASS: RL-MAJOR COLLECTOR</div> <div>NBI OWNER: MODOT</div> <div>NBI MAINTAINED: MODOT</div> <div>MAINTENANCE DISTRICT: SE</div> <div>MAINTENANCE COUNTY: DUNKLIN</div> <div>SUB AREA: 7H25</div>		<div>PLACE CODE: 32554 HOLCOMB</div> <div>LENGTH: 33 FT 0 IN</div> <div>MAXIMUM SPAN: 30 FT 0 IN</div> <div>APPROACH ROADWAY: 18 FT 0 IN</div> <div>CURB TO CURB: 22 FT 0 IN</div> <div>OUT TO OUT: 23 FT 7 IN</div> <div>AADT: 386</div> <div>AADT YEAR: 2024</div> <div>AADT TRUCK: 5.7%</div> <div>FUTURE AADT: 540</div> <div>FUTURE AADT YEAR: 2044</div>		<div>DATE: 11/12/2024</div> <div>RESPONSIBILITY: DISTRICT</div> <div>FREQUENCY: 12</div> <div>CALCULATED INTERVAL**: 12</div> <div>TEAM LEADER: JESSE ELSEMAN</div> <div>ELEMENT: NO</div> <div>INSPECTOR 2:</div> <div>INSPECTOR 4:</div> <div>INSPECTOR 3:</div> <div>** When calculated interval exceeds the frequency, a justification comment per BIRM is required.</div>			
						GENERAL INSPECTION COMMENTS			
***FRACTURE CRITICAL INSPECTION INFORMATION***					***INDEPTH INSPECTION INFORMATION***				
<div>DATE:</div> <div>FREQUENCY:</div> <div>TEAM LEADER:</div> <div>INSPECTOR 2:</div> <div>** When calculated interval exceeds the frequency, a justification comment per BIRM is required.</div>					<div>RESPONSIBILITY:</div> <div>CALCULATED INTERVAL**:</div> <div>INSPECTOR 3:</div> <div>INSPECTOR 4:</div> <div>CATEGORY:</div> <div>NBI:</div> <div>METHOD:</div> <div>** When calculated interval exceeds the frequency, a justification comment per BIRM is required.</div>				
FRACTURE CRITICAL INSPECTION COMMENTS					INDEPTH INSPECTION COMMENTS				
***SPECIAL INSPECTION INFORMATION***					***UNDERWATER INSPECTION INFORMATION***				
<div>DATE: 05/27/2014</div> <div>FREQUENCY: 120</div> <div>TEAM LEADER:</div> <div>INSPECTOR 2: CHANNEL CROSS SECTION</div> <div>INSPECTOR 3:</div> <div>INSPECTOR 4:</div> <div>** When calculated interval exceeds the frequency, a justification comment per BIRM is required.</div>					<div>RESPONSIBILITY: DISTRICT</div> <div>CALCULATED INTERVAL**:</div> <div>INSPECTOR 3:</div> <div>INSPECTOR 4:</div> <div>CATEGORY: CHANNEL CROSS SEC</div> <div>NBI: NO</div> <div>METHOD: WT TAPE</div> <div>** When calculated interval exceeds the frequency, a justification comment per BIRM is required.</div>				
SPECIAL INSPECTION COMMENTS					UNDERWATER INSPECTION COMMENTS				
OTHER SPECIAL INSPECTIONS					OTHER UNDERWATER INSPECTIONS				
<div>DATE</div> <div>FREQUENCY</div> <div>CATEGORY</div> <div>NBI</div> <div>CALCULATED INTERVAL</div> <div>RESPONSIBILITY</div> <div>METHOD</div>					<div>DATE</div> <div>FREQUENCY</div> <div>CATEGORY</div> <div>NBI</div> <div>CALCULATED INTERVAL</div> <div>RESPONSIBILITY</div> <div>METHOD</div>				
Design_No = J0854									
<div>Page 1</div> <div>This report contains information that is protected from disclosure by federal law, 23 USC Section 409 and the Missouri Open Records Law (Sunshine Act), Section 610.021 RSMo. Please review MoDOT's policy and procedure manual on the Sunshine Act before releasing any of the information contained herein.</div>									


		Missouri Department of Transportation			March 25, 2025	
		State Bridge Inspection Report			9:17:42AM	
COUNTY: DUNKLIN		DISTRICT: SE		CLASS: STATBR	FED-ID: 5556	BRIDGE: J0854
***STRUCTURE POSTING***						
APPROVED CATEGORY: S-1		NO POSTING REQUIRED				
Ton 1:		Ton 2:		Ton 3:		
COMMENTS:						
FIELD CATEGORY: S-1		NO POSTING REQUIRED				
Ton 1:		Ton 2:		Ton 3:	PROBLEM:	PROBLEM DIRECTION:
COMMENTS:						
***GENERAL COMMENTS/MAJOR RATED ITEMS***						
GENERAL COMMENTS: (BOWDEJ1, 09/05/2008)--(30') SMP WF GDR SPAN						
[ITEM 58] DECK: 6-SATISFACTORY CONDITION		COMMENTS: (DENNIB1, 12/01/2014)--SPALL & T CRACKS				
RATING : 05/18/2001						
[ITEM 59] SUPER: 4-POOR CONDITION		COMMENTS: (BRAWLK1, 11/14/2023)--SECTION LOSS @ GIRDER END				
RATING : 11/14/2023						
[ITEM 60] SUB: 5-FAIR CONDITION		COMMENTS: (SHRUBM1, 11/18/2011)--PILE REPAIRS MADE				
RATING : 11/18/2011						
[ITEM 61] BANK/CHANNEL: 7-MINOR DAMAGE		COMMENTS: (ELSEMJ, 11/30/2024)--MINOR BANK DAMAGE				
RATING : 05/18/2001						
[ITEM 113] SCOUR: 8-STABLE FOR CALCULATED		COMMENTS:				
RATING : 05/18/2001						
EVALUATION TYPE :						
[ITEM 71] WATERWAY ADEQUACY: DECK ABOVE FLOOD ELEV		COMMENTS:				
RATING : 05/18/2001						
[ITEM 72] APPRRDWY ALIGNMENT: 8-VERYGOOD		COMMENTS:				
RATING : 05/18/2001						
***RAILING AND APPROACH PAVEMENT COMPONENTS AND RATINGS***						
[ITEM 36A] BRIDGE RAILING RATING: DOESNT MEET CURRNT STND-0		RATING : 02/18/2004		COMMENTS:		
<u>MATERIAL</u>	<u>CONSTRUCTION</u>	<u>DIRECTION</u>	<u>COMMENTS</u>			
REINFORCED CONCRETE	CURB	BOTH				
<u>CONDITION</u>		<u>LOCATION 1</u>	<u>LOCATION 2</u>	<u>SEVERITY</u>	<u>COMMENT</u>	
LONGITUDINAL CRACKS		THROUGHOUT		MINOR		
VERTICAL CRACKS		THROUGHOUT		MINOR		
STEEL	PIPE-DOUBLE	BOTH				
<u>CONDITION</u>		<u>LOCATION 1</u>	<u>LOCATION 2</u>	<u>SEVERITY</u>	<u>COMMENT</u>	
RUSTING		THROUGHOUT		MINOR		
[ITEM 36B] TRANSITION RAILING RATING: NOT PROVIDED-0		RATING : 05/18/2001		COMMENTS:		
[ITEM 36C] APPROACH RAILING RATING: NOT PROVIDED-0		RATING : 05/18/2001		COMMENTS:		
Design_No = J0854						
Page 2						
This report contains information that is protected from disclosure by federal law, 23 USC Section 409 and the Missouri Open Records Law (Sunshine Act), Section 610.021 RSMo. Please review MoDOT's policy and procedure manual on the Sunshine Act before releasing any of the information contained herein.						

		Missouri Department of Transportation				March 25, 2025	
		State Bridge Inspection Report				9:17:42AM	
COUNTY: DUNKLIN		DISTRICT: SE		CLASS: STATBR		FED-ID: 5556	
						BRIDGE: J0854	
[ITEM 36D] RAIL END TREATMENT RATING: NOT PROVIDED-0				RATING : 05/18/2001		COMMENTS:	
APPROACH PAVEMENT: *Overall condition assigned for each approach pavemenet component is shown below.							
<u>MATERIAL</u>		<u>CONSTRUCTION</u>		<u>DIRECTION</u>		<u>CONDITION*</u>	
ASPHALT		BITUMINOUS MAT		BOTH			
***DRAINAGE, EXPANSION DEVICES, BANK/SLOPE, AND DECK PROTECTIVE COMPONENTS***							
<u>DECK PROTECTIVE COMPONENTS:</u>							
<u>SERIES TYPE-#</u>		<u>COMPONENT</u>		<u>MATERIAL</u>		<u>CONSTRUCTION</u>	
MAIN SERIES-1		WEARING SURFACE		ASPHALT		BITUMINOUS MAT	
						<u>THICKNESS</u>	
						1 IN	
						<u>YEAR APPLIED</u>	
						2020	
						<u>MANUFACTURE</u>	
						<u>OVERALL CONDITION</u>	
						GOOD	
<u>COMMENT:</u> (WILSOJ, 02/12/2004)--APPLIED IN 2000							
		<u>DECK PROTECTION</u>		<u>NOTAPPLICABLE</u>		<u>NONE</u>	
						GOOD	
<u>COMMENT:</u>							
		<u>MEMBRANE</u>		<u>NOTAPPLICABLE</u>		<u>NONE</u>	
<u>COMMENT:</u>							
<u>DRAINAGE COMPONENTS:</u>							
		<u>COMPONENT</u>		<u>MATERIAL</u>		<u>CONSTRUCTION</u>	
		<u>DRAINAGE</u>		<u>REINFORCED CONCRETE</u>		<u>CURB OUTLET</u>	
<u>EXPANSION DEVICE COMPONENTS:</u>							
<u>SUB UNIT-#</u>		<u>SUB LABEL</u>		<u>COMPONENT</u>		<u>MATERIAL</u>	
						<u>CONSTRUCTION</u>	
						<u>GAP</u>	
						<u>YEAR APPLIED</u>	
						<u>MANUFACTURE</u>	
						<u>OVERALL CONDITION</u>	
<u>COMMENT:</u>							
<u>BANK/SLOPE PROTECTION COMPONENTS:</u>							
		<u>COMPONENT</u>		<u>MATERIAL</u>		<u>CONSTRUCTION</u>	
		<u>BANK PROTECTION</u>		<u>EARTH FILL</u>		<u>BERM</u>	
						<u>DIRECTION</u>	
						<u>BOTH</u>	
						<u>COMMENTS</u>	
***DECK COMPONENTS***							
<u>SPAN TYPE-#</u>		<u>COMPONENT</u>		<u>MATERIAL</u>		<u>CONSTRUCTION</u>	
MAIN SPANS-1		DECK		REINFORCED CONCRETE		CAST-IN-PLACE	
						<u>COMMENTS</u>	
						(WILSOJ, 02/12/2004)--DECK RAISED 2" ON NORTH END	
		<u>CONDITION</u>		<u>LOCATION 1</u>		<u>LOCATION 2</u>	
		<u>BOLTED</u>		<u>TOP FLANGE</u>		<u>SEVERITY</u>	
		<u>DELAMINATION</u>		<u>THROUGHOUT</u>		<u>MEASUREMENT</u>	
		<u>LONGITUDINAL CRACKS</u>		<u>THROUGHOUT</u>		<u>COMMENT</u>	
		<u>REBAR EXPOSED</u>		<u>THROUGHOUT</u>			
		<u>SATURATION</u>		<u>RANDOM</u>			
		<u>SPALLS</u>		<u>THROUGHOUT</u>			
		<u>TRANSVERSE CRACKS</u>		<u>THROUGHOUT</u>			
***SUPERSTRUCTURE COMPONENTS***							
Design_No = J0854							
Page 3							
This report contains information that is protected from disclosure by federal law, 23 USC Section 409 and the Missouri Open Records Law (Sunshine Act), Section 610.021 RSMo. Please review MoDOT's policy and procedure manual on the Sunshine Act before releasing any of the information contained herein.							



		Missouri Department of Transportation						March 25, 2025					
		State Bridge Inspection Report						9:17:42AM					
COUNTY: DUNKLIN		DISTRICT: SE		CLASS: STATBR		FED-ID: 5556		BRIDGE: J0854					
<u>SERIES TYPE-#</u>		<u>SPAN TYPE</u>		<u>MATERIAL</u>		<u>CONSTRUCTION</u>		<u>LABEL</u>		<u>COMMENTS</u>			
MAIN SERIES-1		SIMPLE SPAN		STEEL		WIDE FLANGE GIRDERS							
<u>SPAN</u>		<u>COMPOSITE INDICATOR</u>		<u>LENGTH</u>		<u>WEATHERING STEEL</u>		<u>COMMENTS</u>					
MAIN SPANS-1		NON-COMPOSITE		30 FT 0 IN		NO							
<u>CONDITION</u>		<u>LOCATION 1</u>		<u>LOCATION 2</u>		<u>SEVERITY</u>		<u>MEASUREMENT</u>		<u>COMMENT</u>			
DECK LIFTING		TOP FLANGE				MINOR							
PACK RUST		EXTERIOR GIRDERS				MINOR							
RUSTING		AT BEARING				MINOR							
RUSTING		TOP FLANGE				MINOR							
SECTION LOSS		BOTTOM FLANGE				MODERATE							
***SUBSTRUCTURE COMPONENTS***													
<u>SUBSTRUCTURE</u>		<u>SKEW</u>		<u>LENGTH</u>		<u>MATERIAL</u>		<u>CONSTRUCTION</u>		<u>LABEL</u>		<u>COMMENTS</u>	
ABUTMENT-1				23 FT 7 IN		TIMBER		NON-INTEGRAL					
<u>CONDITION</u>		<u>LOCATION 1</u>		<u>LOCATION 2</u>		<u>SEVERITY</u>		<u>MEASUREMENT</u>		<u>COMMENT</u>			
<u>ASSOCIATED COMPONENT</u>		<u>MATERIAL</u>		<u>CONSTRUCTION</u>									
BEAM CAP		TIMBER		BEAM									
<u>CONDITION</u>		<u>LOCATION 1</u>		<u>LOCATION 2</u>		<u>SEVERITY</u>		<u>MEASUREMENT</u>		<u>COMMENT</u>			
SPLITTING		THROUGHOUT				MINOR							
PILING		TIMBER		OTHER									
<u>CONDITION</u>		<u>LOCATION 1</u>		<u>LOCATION 2</u>		<u>SEVERITY</u>		<u>MEASUREMENT</u>		<u>COMMENT</u>			
REPLACE WITH H PILE		2 OF 4				NOT APPLICABLE							
SPLITTING		THROUGHOUT				MINOR							
STRAIGHT WINGS		TIMBER		PLANKS									
<u>CONDITION</u>		<u>LOCATION 1</u>		<u>LOCATION 2</u>		<u>SEVERITY</u>		<u>MEASUREMENT</u>		<u>COMMENT</u>			
EXPANSION BEARING		STEEL		SLIDING FLAT PLATE									
<u>CONDITION</u>		<u>LOCATION 1</u>		<u>LOCATION 2</u>		<u>SEVERITY</u>		<u>MEASUREMENT</u>		<u>COMMENT</u>			
BACKWALL		TIMBER		PLANKS									
<u>CONDITION</u>		<u>LOCATION 1</u>		<u>LOCATION 2</u>		<u>SEVERITY</u>		<u>MEASUREMENT</u>		<u>COMMENT</u>			
DECAYING		BOTTOM				MODERATE							
SHOVING		TOP				MINOR							
WING PILES		TIMBER		OTHER									
<u>CONDITION</u>		<u>LOCATION 1</u>		<u>LOCATION 2</u>		<u>SEVERITY</u>		<u>MEASUREMENT</u>		<u>COMMENT</u>			
OTHER		AT WING PILES				NOT APPLICABLE				(SHRUBM1, 11/18/2011)--BOTH REPLACED WITH "H" PILE			
ABUTMENT-2		23 FT 7 IN		TIMBER		NON-INTEGRAL							
<u>CONDITION</u>		<u>LOCATION 1</u>		<u>LOCATION 2</u>		<u>SEVERITY</u>		<u>MEASUREMENT</u>		<u>COMMENT</u>			
<u>ASSOCIATED COMPONENT</u>		<u>MATERIAL</u>		<u>CONSTRUCTION</u>									
BEAM CAP		TIMBER		BEAM									
<u>CONDITION</u>		<u>LOCATION 1</u>		<u>LOCATION 2</u>		<u>SEVERITY</u>		<u>MEASUREMENT</u>		<u>COMMENT</u>			
SPLITTING		THROUGHOUT				MINOR							
PILING		TIMBER		OTHER									
<u>CONDITION</u>		<u>LOCATION 1</u>		<u>LOCATION 2</u>		<u>SEVERITY</u>		<u>MEASUREMENT</u>		<u>COMMENT</u>			
REPLACE WITH H PILE		2 OF 4				NOT APPLICABLE							
SPLITTING		THROUGHOUT				MINOR							
STRAIGHT WINGS		TIMBER		PLANKS									
<u>CONDITION</u>		<u>LOCATION 1</u>		<u>LOCATION 2</u>		<u>SEVERITY</u>		<u>MEASUREMENT</u>		<u>COMMENT</u>			
DECAYING		THROUGHOUT				MODERATE							
EXPANSION BEARING		STEEL		SLIDING FLAT PLATE									
<u>CONDITION</u>		<u>LOCATION 1</u>		<u>LOCATION 2</u>		<u>SEVERITY</u>		<u>MEASUREMENT</u>		<u>COMMENT</u>			
BACKWALL		TIMBER		PLANKS									
Design_No = J0854													
Page 4													
This report contains information that is protected from disclosure by federal law, 23 USC Section 409 and the Missouri Open Records Law (Sunshine Act), Section 610.021 RSMo. Please review MoDOT's policy and procedure manual on the Sunshine Act before releasing any of the information contained herein.													

		<div>Missouri Department of Transportation</div> <div>State Bridge Inspection Report</div>				<div>March 25, 2025</div> <div>9:17:42AM</div>																			
COUNTY: DUNKLIN		DISTRICT: SE		CLASS: STATBR		FED-ID: 5556		BRIDGE: J0854																	
<div><div>CONDITION</div><div>DECAYING SHOVING</div></div>		<div><div>LOCATION 1</div><div>BOTTOM TOP</div></div>		<div><div>LOCATION 2</div><div>OTHER</div></div>		<div><div>SEVERITY</div><div>MODERATE MINOR</div></div>		<div><div>MEASUREMENT</div><div></div></div>		<div><div>COMMENT</div><div></div></div>															
WING PILES		TIMBER		OTHER																					
<div><div>CONDITION</div><div>OTHER</div></div>		<div><div>LOCATION 1</div><div>AT WING PILES</div></div>		<div><div>LOCATION 2</div><div></div></div>		<div><div>SEVERITY</div><div>NOT APPLICABLE</div></div>		<div><div>MEASUREMENT</div><div></div></div>		<div><div>COMMENT</div><div>(SHRUBM1, 11/18/2011)--BOTH REPLACE WITH "H" PILE</div></div>															
***OVER/UNDER ROUTES CLEARANCE INFORMATION***																									
<div><div>CLEARANCES OVER DECK</div><div>**NOTE: Vertical clearances for permitting purposes are taken as 2 inches less than the actual field measured clearance.</div><table><tr><td>VERTICAL CLEARANCE TYPE**</td><td>VALUE</td><td>DIRECTION</td><td>DATE</td><td>COMMENT</td></tr></table></div>												VERTICAL CLEARANCE TYPE**	VALUE	DIRECTION	DATE	COMMENT									
VERTICAL CLEARANCE TYPE**	VALUE	DIRECTION	DATE	COMMENT																					
<div><div>CLEARANCES UNDER BRIDGE</div><div>**NOTE: Vertical clearances for permitting purposes are taken as 2 inches less than the actual field measured clearance.</div><table><tr><td>RECORD #</td><td>ROUTE</td><td># LANES</td><td>DIRECTION OF TRAFFIC</td><td>RIGHT LATERAL CLEARANCE</td><td>LEFT LATERAL CLEARANCE</td><td>UR-ID</td></tr><tr><td>VERTICAL CLEARANCE TYPE**</td><td>VALUE</td><td>DIRECTION</td><td>DATE</td><td>COMMENT</td><td></td><td></td></tr></table></div>												RECORD #	ROUTE	# LANES	DIRECTION OF TRAFFIC	RIGHT LATERAL CLEARANCE	LEFT LATERAL CLEARANCE	UR-ID	VERTICAL CLEARANCE TYPE**	VALUE	DIRECTION	DATE	COMMENT		
RECORD #	ROUTE	# LANES	DIRECTION OF TRAFFIC	RIGHT LATERAL CLEARANCE	LEFT LATERAL CLEARANCE	UR-ID																			
VERTICAL CLEARANCE TYPE**	VALUE	DIRECTION	DATE	COMMENT																					
***STRUCTURE PAINT INFORMATION***																									
CONDITION: FAIR		RUST AMOUNT : 7 = .2% OF SURFACE RUSTED				STEEL TONS : 6																			
<div><div>ORIGINAL PAINT</div><div>PAIN T TYPE : NAME : PAINT COLOR : PAINT YEAR : 1977 MIL S :</div></div>		<div><div>CONTRACT REPAINT</div><div>PAIN T TYPE : NAME : PAINT COLOR : PAINT YEAR : MIL S :</div></div>				<div><div>DEPARTMENT REPAINT</div><div>PAIN T TYPE : C SYSTEM NAME : INORGANIC ZINC/VINYL PAINT COLOR : ALUMINUM PAINT YEAR : 1993 MIL S : 9</div></div>		<div><div>MANUFACTURE : SURFACE PREP :</div></div>																	
***REQUESTED WORK ITEMS***																									
GENERAL WORK COMMENTS:																									
Design_No = J0854																									
<div>Page 5</div> <div>This report contains information that is protected from disclosure by federal law, 23 USC Section 409 and the Missouri Open Records Law (Sunshine Act), Section 610.021 RSMo. Please review MoDOT's policy and procedure manual on the Sunshine Act before releasing any of the information contained herein.</div>																									

		Missouri Department of Transportation				March 25, 2025																																		
		State Bridge Inspection Report				9:17:42AM																																		
COUNTY: DUNKLIN		DISTRICT: SE		CLASS: STATBR		FED-ID: 5556																																		
						BRIDGE: J0854																																		
<div>RESPONSIBILITYLOCATIONITEMCATEGORYPRIORITYDATEWORK ITEM COMMENT</div>																																								
***UTILITY ATTACHMENTS***																																								
<div>UTILITYOWNERMETHODMEASUREMENT TYPEVALUENUMBERUTILITY ATTACHMENT COMMENT</div>																																								
***PROGRAM NOTES INFORMATION***																																								
<div>YEARPROJECT #MONTH LETYEAR LETITEMSCOMMENT</div> <div>2027SE007012027</div>																																								
***COMPUTER GENERATED RATINGS AND DEFICIENCY ITEMS***					***ADVANCED SIGN INFORMATION***																																			
<div>NOTE: The items listed in this section are updated whenever computer edits are ran on a structure after the inspection updates have been entered in to TMS.</div> <table><tr><td><u>Rated Item</u></td><td><u>Rating</u></td><td><u>Rating Date</u></td></tr><tr><td>[Item 67] Structure Evaluation Rating:</td><td>4-MEETS MINIMUM TOLERABLE</td><td>11/15/2023</td></tr><tr><td>[Item 68] Deck Geometry Rating:</td><td>4-MEETS MINIMUM TOLERABLE</td><td>5/18/2001</td></tr><tr><td>[Item 69] Underclearance:</td><td>N-NOT APPLICABLE</td><td>5/18/2001</td></tr><tr><td>Sufficiency Rating:</td><td>38.6%</td><td>2/27/2025</td></tr><tr><td>Deficiency:</td><td>STRUCTURAL</td><td>11/15/2023</td></tr><tr><td>Funding Eligibility:</td><td></td><td>----</td></tr><tr><td>Estimated New Structure Length:</td><td></td><td>----</td></tr><tr><td>Estimated Structure Cost:</td><td></td><td>----</td></tr><tr><td>Estimated Total Project Cost:</td><td></td><td>----</td></tr><tr><td>Year of Cost Estimate:</td><td></td><td>----</td></tr></table> <div>NOTE: The above structure length and cost estimates are computer generated using algorithms in the TMS system. These algorithms are generalized to use NBI items to come up with a new structure length and width to calculate a new area which is taken times a representative cost per square foot. The actual structure size and cost may vary significantly from these numbers once site specific engineering is done.</div>					<u>Rated Item</u>	<u>Rating</u>	<u>Rating Date</u>	[Item 67] Structure Evaluation Rating:	4-MEETS MINIMUM TOLERABLE	11/15/2023	[Item 68] Deck Geometry Rating:	4-MEETS MINIMUM TOLERABLE	5/18/2001	[Item 69] Underclearance:	N-NOT APPLICABLE	5/18/2001	Sufficiency Rating:	38.6%	2/27/2025	Deficiency:	STRUCTURAL	11/15/2023	Funding Eligibility:		----	Estimated New Structure Length:		----	Estimated Structure Cost:		----	Estimated Total Project Cost:		----	Year of Cost Estimate:		----	<div>SIGN #SIGN TYPEPROBLEMPROBLEM DIRECTION</div> <div>1</div>		
					<u>Rated Item</u>	<u>Rating</u>	<u>Rating Date</u>																																	
					[Item 67] Structure Evaluation Rating:	4-MEETS MINIMUM TOLERABLE	11/15/2023																																	
[Item 68] Deck Geometry Rating:	4-MEETS MINIMUM TOLERABLE	5/18/2001																																						
[Item 69] Underclearance:	N-NOT APPLICABLE	5/18/2001																																						
Sufficiency Rating:	38.6%	2/27/2025																																						
Deficiency:	STRUCTURAL	11/15/2023																																						
Funding Eligibility:		----																																						
Estimated New Structure Length:		----																																						
Estimated Structure Cost:		----																																						
Estimated Total Project Cost:		----																																						
Year of Cost Estimate:		----																																						
***OUTFALL INSPECTION INFORMATION***																																								
<div># OUTFALLS:INSPECTOR:</div> <div>STATUS:DATE:</div> <div>NOTES:</div>																																								





Missouri Department of Transportation  
Bridge Inventory and Inspection System  
Structural Inventory & Appraisal Sheet

March 25, 2025  
9:13:50am

COUNTY : DUNKLIN      BRIDGE : J0854      REVIEW STATUS : CONVERTED      NBI STATUS : T  
RECORD TYPE : ROUTE CARRIED 'ON' STRUCT      RUN DATE : 3/7/2025      SUBMITTAL YEAR : 2025

GENERAL STRUCTURE INFORMATION

1	State	MISSOURI
2	District	SE
3	County	DUNKLIN
8	Federal ID No.	5556
27	Year Built	1931
106	Year Reconstructed	0
42A	Type of Service On	HIGHWAY
21	Structure Maintenance	STATE HIGHWAY AGENCY
22	Structure Owner	STATE HIGHWAY AGENCY
33	Br. Median Code	NO MEDIAN
37	Historical Significance	NOT ELIGIBLE FOR NR OF HP
101	Parallel Struc Desg	NONE EXISTS
103	Temporary Structure	NOT TEMPORARY
112	NBIS Bridge Length	YES

ROUTE DESIGNATION INFORMATION

5A	Record Type	ROUTE CARRIED 'ON' STRUCT
5B	Route Signing Prefix	MO
5C	Designated Level of Service	MAINLINE
5D	Route Number	00153
5E	Directional Suffix	NOT APPLICABLE
7	Facility Carried	MO 153 S
12	Base Hwy. Network	NO
13A	LRS Inventory Route No.	
13B	Subroute No.	
20	Toll Status	ON FREE ROAD
26	Functional Classification	07-RURAL MAJOR COLLECTOR
28A	Lanes on Structure	02
100	STRAHNET Designation	RTE NOT A DEFENSE HWY
104	National Highway System	NOT ON NHS
105	Federal Lands Highway	NOT APPLICABLE
110	Designated Nat. Network	NO

STRUCTURE LOCATION INFORMATION

4	Place	HOLCOMB
	Code	32554
9	Location	S 31 T 20 N R 10 E
11	Milepoint	47.04 miles
16	Latitude	36 D 19 M 50 S
17	Longitude	90 D 1 M 30 S

STRUCTURE TRAFFIC INFORMATION

29	AADT	386
30	AADT Year	2024
102	Direction of Traffic	2-WAY TRAFFIC
109	AADT Truck Percent	6%
114	Future AADT	540
115	Future AADT Year	2044

UNDERRECORD INFORMATION

6	Features Intersected	SLU
42B	Type of Service Under	WATERWAY
28B	Lanes Under Structure	00
54A	Vert. Clearance Ref.	N/A
54B	Vert. Clearance	0 Ft. 0 In.
55A	Rt. Lat Clear Ref.	N/A
55B	Rt. Lat Clearance	0 Ft. 0 In.
56	Left Lat Clearance	0 Ft. 0 In.
38	Navigation Control	PERMIT NOT REQ
39	Nav Vertical Clear	0 Ft. 0 In.
40	Nav Horizontal Clear	0 Ft. 0 In.
111	Nav. Pier Protection	
116	Nav. Cl. Vert. Clear	

STRUCTURE GEOMETRIC INFORMATION

10	Inventory Rte. Vert. Clear	99 Ft. 99 In.
19	By pass Detour Length	11.25 miles
32	Approach Roadway Width	18 Ft. 1 In.
34	Skew	0.00 Degrees
35	Struct. Flared	NO
47	Total Horiz. Clear	21 Ft. 12 In.
48	Maximum Span Length	29 Ft. 10 In.
49	Structure Length	33 Ft. 2 In.
50A	Left Curb/Sidewalk Width	0 Ft. 0 In.
50B	Right Curb/Sidewalk Width	0 Ft. 0 In.
51	Curb to Curb Br. Width	21 Ft. 12 In.
52	Deck Width (Out-Out)	23 Ft. 7 In.
53	Vert. Clearance Over Deck	99 Ft. 99 In.

Design\_No = J0854 and Inventory\_Appraisal\_Submittal\_Year = 2025



Missouri Department of Transportation  
Bridge Inventory and Inspection System  
Structural Inventory & Appraisal Sheet

March 25, 2025  
9:13:50am

COUNTY : DUNKLIN      BRIDGE : J0854      REVIEW STATUS : CONVERTED      NBI STATUS : T  
RECORD TYPE : ROUTE CARRIED 'ON' STRUCT      RUN DATE : 3/7/2025      SUBMITTAL YEAR : 2025

LOAD RATING AND POSTING INFORMATION			MATERIAL/CONSTRUCTION INFORMATION		
31	Design Load	H 15	43A	Main Struc. Mat type	STEEL
41	Structure Status	OPEN NO RESTRICTIONS	43B	Main struc Constr. Type	STRINGER/MULTIBEAM - GRD
63	Oper. Rating Meth.	LOAD FACTOR	45	# of Main Spans	1
64	Operating Rating	34 Tons.	44A	Appr Struc. Mat type	000
65	Inventory Rating Meth	LOAD FACTOR	44B	Appr Struc. Cnstr. type	000
66	Inventory Rating	20 Tons.	46	# of Approach Span	0
70	Bridge Posting Code	=>LEGAL LOADS	107	Deck Mat/Constr.	1 CONCRETE CIP
PROPOSED IMPROVEMENT INFORMATION			108A	Wear Surf Mat/Constr.	6 BITUMINOUS
Sufficiency Rating 38.6 Percent			108B	Membrane Mat/Constr.	0 NONE
Deficiency Rating STRUCTURAL			108C	Deck Protect Mat/Constr.	0 NONE
Funding Eligibility FULL			CONDITION RATING INFORMATION		
75A	Proposed Work	REPLACEMENT SUBSTND LOAD	58	Deck Cond. Rating	6
75B	Work Done By	Contract	59	Superstructure Cond. Rating	4
76	New Struc Length	55 Ft. 9 In.	60	Substructure Cond. Rating	5
94	Struc Improve Cost	\$ 291,000	61	Channel /Channel Protection Cond. Rating	7
95	Roadway Improve Cost	\$ 29,000	62	Culvert Cond. Rating	N
96	Total Project Cost	\$ 437,000	INSPECTION INFORMATION		
97	Year of Cost Estimates	2025	90	Gen. Insp Date	11 / 24
APPRAISAL RATING INFORMATION			91	Gen. Insp. Frequency	12 Months
36A	Br. Rail App. Rating	DOES NOT MEET ACCEPT STND	92A	Frac. Critical Inspection	N Months
36B	Transition Rail App. Rating	DOES NOT MEET ACCEPT STND	93A	Frac. Critical Insp. Date	
36C	Approach Rail App. Rating	DOES NOT MEET ACCEPT STND	92B	Underwater Inspection	N Months
36D	Rail End Treat. App. Rating	DOES NOT MEET ACCEPT STND	93B	Underwater Insp. Date	
67	Struc Eval App. Rating	4	92C	Special Inspection	N Months
68	Deck Geometry App. Rating	4	93C	Special Inspection Date	
69	Underclearance App. Rating	N	BORDER BRIDGE INFORMATION		
71	Waterway Adeq. App. Rating	8	98	Neighboring State Code	
72	Approach Road App. Rating	8	98B	Neighboring State % Respon	
113	Scour Assess App. Rating	8	99	Neighboring State Struc. No.	
APPROVED POSTING INFORMATION			FIELD POSTING INFORMATION		
Approved Posting Category S-1			Field Posting Category S-1		
Ton1      Ton2      Ton3			Ton1      Ton2      Ton3		
Tonnage Values for Posting Sign			Tonnage Values for Posting Sign		
General Text for Posting Sign			General Text for Posting Sign		
NO POSTING REQUIRED			NO POSTING REQUIRED		

Design\_No = J0854 and Inventory\_Appraisal\_Submittal\_Year = 2025