

MoDOT Northeast District

2025 Construction Guide



Adair County

- **Route 6:** Seal Coat - 1 mile east of Route 149 at the Chariton River to Bus. Route 63 in Kirksville
- **Route 6:** Seal Coat - 0.2 mile east of Route 63 in Adair County to Route 15 south junction near Edina in Knox County
- **Route 6:** Seal Coat - Chariton River bridge near Novinger in Adair County to 0.3 mile west of Route D in Green Castle in Sullivan County
- **Route D:** Resurfacing - Route 6 in Green Castle in Sullivan County to Route 149 near Green Grove in Adair County **
- **Route E:** Bridge Replacement - Over Bear Creek, 1.6 miles west of Route V, near Gibbs
- **Route V:** Bridge Replacement - Over North Timber Creek, 0.86 mile south of Route 6, near Brashear
- **Route V:** Sidewalk (ADA) Improvements - Olive Street to Chicago Avenue in Gibbs
- **Route T:** Resurfacing - Route 63 to the end of state maintenance **

Audrain County

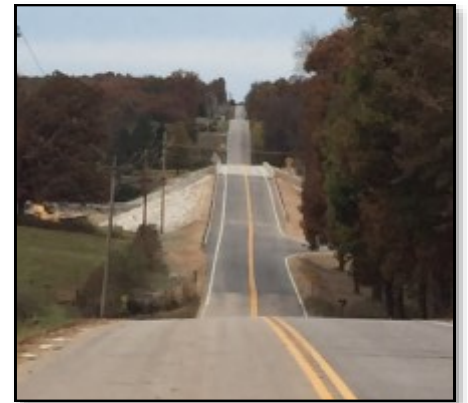
- **Route 15:** Resurfacing - Route D in Monroe County to 1.1 miles north of Route 22 near Mexico in Audrain County
- **Route 151:** Resurfacing - 0.3 mile north of Route 36 near Clarence in Shelby County to Route 22 near Centralia in Boone County (*three disconnected sections*)
- **Route C:** Resurfacing - Route 24 in Monroe County to Route 151 near Centralia at the Boone County line **
- **Route K:** Bridge Replacement - Over Hickory Creek, 1.74 miles west of Route W, near Farber
- **Route Y:** Resurfacing - Route M in Monroe County to Route 22 near Sturgeon in Audrain County **
- **Route CC:** Resurfacing - Route C to Route 15 near Rowena **
- **Route JJ:** Resurfacing - Route 54 to the end of state maintenance near Mexico **

Clark County

- **Route 136:** Bridge Painting - Structure over BNSF Railway, 0.21 mile west of South Street, in Medill
- **Route 136:** Seal Coat - Schuyler County line to 0.5 mile west of the BNSF Railroad crossing near Medill in Clark County

Knox County

- **Route 6:** Seal Coat - 0.2 mile east of Route 63 in Adair County to Route 15 south junction near Edina in Knox County



MoDOT Northeast District

2025 Construction Guide



Knox County (Continued)

- **Route 11:** Bridge Painting - Structure over North Fork South Fabius River, 1.4 miles west of Route 15, near Baring
- **Route 151:** Resurfacing - Route 156 in Knox County to 0.3 mile north of Route 36 near Clarence in Shelby County
- **Route 156:** Bridge Painting - Structure over North River, 0.28 mile west of Route 15, near Novelty
- **Route P:** Bridge Painting - Structure over BNSF Railway, 3.23 miles south of Route 11, near Kenwood

Lewis County

- **Route V:** Sidewalk (ADA) Improvements - Olive Avenue to 292nd Avenue in Maywood (Est. Completion November 2026)
- **Route Y:** Resurfacing - Route K to Route 16 near Monticello **

Lincoln County

- **Route 47:** Interchange Improvements - Diverging Diamond Interchange at Route 61 in Troy
- **Route K:** Resurfacing - Route 61 to the end of state maintenance **
- **Route V:** Resurfacing - Route 61 to Route W **
- **Route W:** Resurfacing - Route 79 in Pike County to Route B in Lincoln County (*two disconnected sections*) **
- **Route Y:** Resurfacing - Route W to Route 79 **

Macon County

- **Route 36 (Eastbound):** Pavement Resurfacing and Bridge Rehabilitation - 0.5 mile west of Route O to 0.1 mile east of Kellogg Avenue near Macon (Est. Completion Fall 2026)
- **Route 36 (Westbound):** Pavement Resurfacing and Bridge Rehabilitation - Kellogg Avenue in Macon to 1.7 miles west of Route O (Est. Completion Fall 2026)
- **Route 36 (Westbound):** Resurfacing - 0.5 mile west of Route Z near Monroe City in Marion County to 0.3 mile west of the Macon County line near Clarence
- **Route 63:** Interchange Improvements - Bridge rehabilitation and signalize intersections at Route 36 and intersection safety improvement at Route 36 and Kellogg Avenue in Macon (Est. Completion Fall 2026)
- **Route 63 (Northbound and Southbound):** Resurfacing - 0.6 mile south of Route YY in Macon County to 1.8 miles north of Route 24 near Moberly in Randolph County (*five disconnected sections*)
- **Route 149:** Sidewalk (ADA) Improvements - North Commercial Street to Walnut Street in Ethel (Est. Completion September 2026)



MoDOT Northeast District

2025 Construction Guide



Macon County (Continued)

- **Route 156:** Sidewalk (ADA) Improvements - South Hastings Street to just east of Tremont Street in La Plata (Est. Completion September 2026)
- **Route 156:** Sidewalk (ADA) Improvements - 50 feet west of South Macon Street to South Main Street in South Gifford (Est. Completion September 2026)
- **Route C:** Sidewalk (ADA) Improvements - Route T north junction to Route T south junction in College Mound (Est. Completion September 2026)
- **Route J:** Bridge Replacement - Over Mussel Fork, 0.03 mile east of the Linn County line, near New Boston
- **Route J:** Sidewalk (ADA) Improvements - East Missouri Avenue to South Elm Street in Elmer (Est. Completion September 2026)

Marion County

- **Route 6:** Bridge Rehabilitation - Over Routes 24/61, 7.6 miles north of Route 168, near Taylor
- **Route 36 (Eastbound):** Pavement Resurfacing and Diamond Grinding - 0.9 mile east of Route H to 1.8 miles east of Route 24 east junction
- **Route 36 (Westbound):** Pavement Resurfacing and Diamond Grinding - 0.7 mile west of Route 61 at Hannibal in Marion County to 0.5 mile west of Route Z near Monroe City in Marion County
- **Route 36 (Westbound):** Resurfacing - 0.5 mile west of Route Z near Monroe City in Marion County to 0.3 mile west of the Macon County line near Clarence
- **Route I-72:** Bridge Washing - Mark Twain Memorial Bridge, over the Mississippi River at Hannibal
- **Route F:** Resurfacing - Route E to 0.2 mile west of Route 61 near Palmyra **
- **Route P:** Resurfacing - Route A to the end of state maintenance near Durham **

Monroe County

- **Route 15:** Resurfacing - Route D in Monroe County to 1.1 miles north of Route 22 near Mexico in Audrain County
- **Route 15:** Seal Coat - Route 154 north junction to Route D near Paris
- **Route 151:** Resurfacing - 0.3 mile north of Route 36 near Clarence in Shelby County to Route 22 near Centralia in Boone County (*three disconnected sections*)
- **Route 154:** Seal Coat - Route 24 at Paris in Monroe County to 0.04 mile west of Route 19 near Perry in Ralls County (*two disconnected sections*)
- **Route C:** Resurfacing - Route 24 in Monroe County to Route 151 near Centralia at the Boone County line **
- **Route M:** Resurfacing - Route 151 to Route 15 **



MoDOT Northeast District

2025 Construction Guide



Monroe County (Continued)

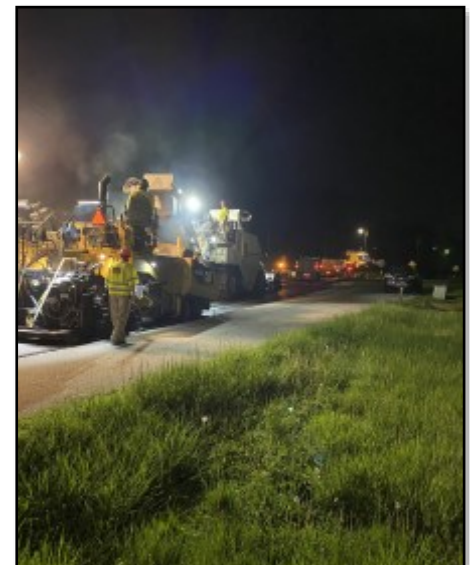
- **Route U:** Resurfacing - Route 24 to the end of state maintenance **
- **Route Y:** Resurfacing - Route M in Monroe County to Route 22 near Sturgeon in Audrain County **

Montgomery County

- **Route 19:** Intersection Improvements - Stave Mill Road and Route 19 intersection, 0.4 mile south of the I-70 and Route 19 interchange (Cost Share Project)
- **Route 19:** Resurfacing - 0.2 mile north of Montgomery City to 1.7 miles south of I-70
- **Route 19:** Resurfacing - 1.7 miles south of I-70 to 1.2 miles south of Route 94 near McKittrick
- **Route I-70 (Eastbound and Westbound):** Resurfacing - 1.4 miles east of Route F in Montgomery County to east of Route MM in Warrenton in Warren County
- **Route 94:** Seal Coat - Route 19 near McKittrick in Montgomery County to the Warren and St. Charles County line (*two disconnected sections*)
- **Route E/Y:** Bridge Replacement - Over I-70 in Jonesburg (Est. Completion December 2026)
- **Route K:** Bridge Replacement - Over Dry Fork Creek, 1.8 miles west of Route 19, near Big Spring (Est. Completion September 2026)
- **Route K:** Bridge Replacement - Over Loutre River, 0.4 mile west of Route 19, near Big Spring (Est. Completion September 2026)
- **Route RA:** Bridge Rehabilitation - Over Little Loutre Creek, 0.44 mile west of Route ZZ, near Wellsville
- **Route ZZ:** Bridge Replacement - Over Little Loutre Creek, 0.46 mile south of Route RA, near Wellsville
- **Route CRD Stave Mill Road:** Resurfacing - Route 19 to Bantys Lane (Cost Share Project)

Pike County

- **Route B:** Bridge Replacement - Over Penno Creek, 0.4 mile west of Route 61, near Frankford (Est. Completion December 2026)
- **Route D:** Bridge Painting - Structure over Route 61 in Eolia
- **Route W:** Bridge Replacement - Over Little Ramsey Creek, 0.5 mile north of Route H, in Paynesville (Est. Completion December 2026)
- **Route W:** Resurfacing - Route 79 in Pike County to Route B in Lincoln County (*two disconnected sections*) **
- **Route WW:** Resurfacing - Route 61 to Route W **



MoDOT Northeast District

2025 Construction Guide



Ralls County

- **Route 154:** Seal Coat - Route 24 at Paris in Monroe County to 0.04 mile west of Route 19 near Perry in Ralls County (*two disconnected sections*)
- **Route D:** Bridge Painting - Structure over Lick Creek, 1.2 miles west of Route 19
- **Route EE:** Resurfacing - Route J to Route 19 **

Randolph County

- **Route 63 (Northbound and Southbound):** Resurfacing - 0.6 mile south of Route YY in Macon County to 1.8 miles north of Route 24 near Moberly in Randolph County (*five disconnected sections*)
- **Route 63 (Southbound):** Resurfacing - 0.3 mile south of Route 24 at Moberly to the Boone County line
- **Route D:** Resurfacing - Route C near Huntsville to Route BB
- **Route O:** Resurfacing - Route C to the end of state maintenance **
- **Route T:** Resurfacing - Route F at Rucker in Boone County to Route B near Clark in Randolph County
- **Route U:** Resurfacing - Route 3 to the end of state maintenance **
- **Route W:** Resurfacing - Route 129 in Chariton County to Route 3 near Thomas Hill in Randolph County
- **Route BB:** Resurfacing - Route 3 to Route A near Moberly
- **Route DD:** Resurfacing - Route 24 in Moberly to the end of state maintenance

Schuyler County

- **Route 136:** Resurfacing - Route 63 in Schuyler County to 0.3 mile west of Route N near Livonia in Putnam County
- **Route 136:** Seal Coat - Route 63 at Lancaster in Schuyler County to the Scotland County line near Downing
- **Route H:** Resurfacing - Route 136 near Livonia to Route W near Worthington **
- **Route K:** Sidewalk (ADA) Improvements - Washington Street to Walnut Street in Greentop
- **Route M:** Sidewalk (ADA) Improvements - Fifth Street to Route 202/Route AA in Glenwood
- **Route W:** Sidewalk (ADA) Improvements - Main Street to Hirschell Street in Queen City
- **Route W:** Resurfacing - Route 63 in Queen City to the Putnam County line near Worthington **



MoDOT Northeast District

2025 Construction Guide



Scotland County

- **Route 136:** Seal Coat - Schuyler County line to 0.5 mile west of the BNSF Railroad crossing near Medill in Clark County

Shelby County

- **Bus. Route 36:** Resurfacing - 0.03 mile east of Grand Street to Route 151 in Clarence
- **Bus. Route 36:** Resurfacing - Route 36 west junction to Route 36 east junction in Shelbina
- **Route 36 (Westbound):** Resurfacing - 0.5 mile west of Route Z near Monroe City in Marion County to 0.3 mile west of the Macon County line near Clarence
- **Route 151:** Resurfacing - Route 156 in Knox County to 0.3 mile north of Route 36 near Clarence in Shelby County
- **Route 151:** Resurfacing - 0.3 mile north of Route 36 near Clarence in Shelby County to Route 22 near Centralia in Boone County (*three disconnected sections*)
- **Route J:** Bridge Replacement - Over Tiger Fork, 0.6 mile west of Route W
- **Route K:** Resurfacing - Route 151 to Route 15 in Shelbyville

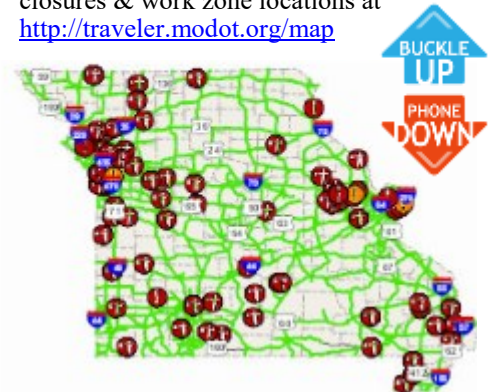
Warren County

- **Improve I-70 Project #2 - Warrenton to Wentzville:** Safety and Capacity Improvements - Route MM/West Warrenton Boulevard interchange, west of Route 47 in Warrenton in Warren County, to the I-64/I-70 interchange at Wentzville in St. Charles County
- **Route I-70 (Eastbound and Westbound):** Resurfacing - 1.4 miles east of Route F in Montgomery County to east of Route MM in Warrenton in Warren County
- **Route 94:** Seal Coat - Route 19 near McKittrick in Montgomery County to the Warren and St. Charles County line (*two disconnected sections*)
- **Route A/B:** Bridge Replacement - Over I-70 near Pendleton (Est. Completion May 2026)



Traveler Information Map

Check MoDOT's Traveler Info Map for weather-related road closures, flood closures & work zone locations at <http://traveler.modot.org/map>



Also available as a free app for android and iPhone devices.



Missouri Department of Transportation
1-888 ASK MODOT (275-6636)
www.modot.org/northeast

