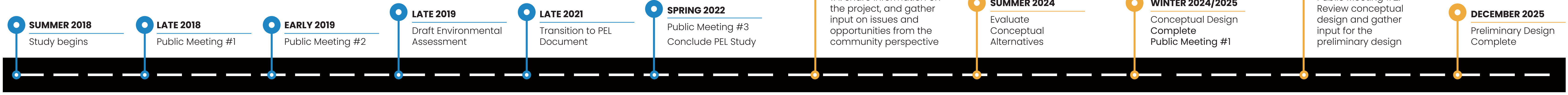


Study Timeline



DRAFT EA AND PEL STUDY

Purpose & Need, Data Collection

Public Input & Feedback

General Location & Footprint

NEPA Review

CONCEPTUAL EVALUATION AND PRELIMINARY DESIGN

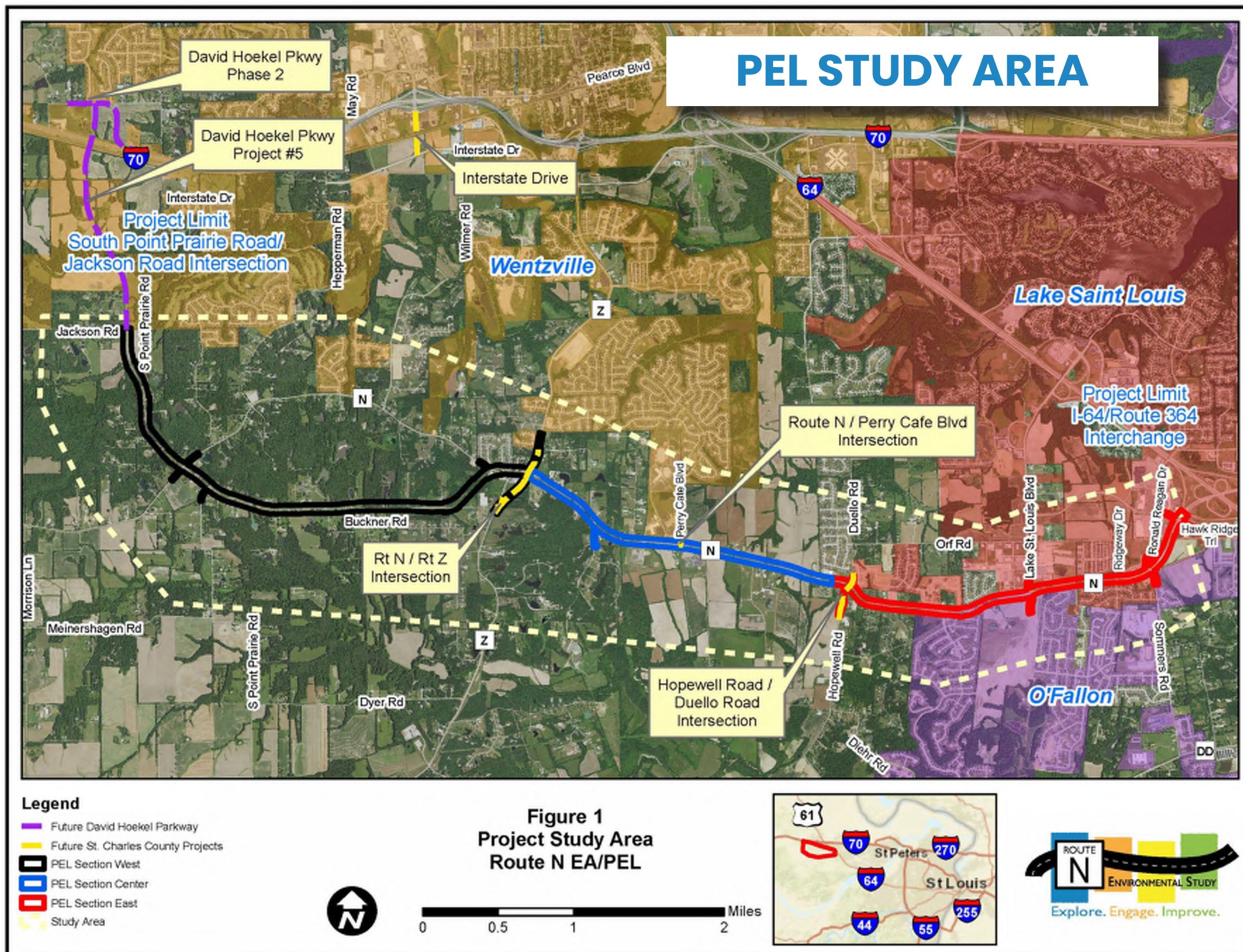
Confirm Goals/Needs

Refine Alignment, Typical Section & Intersection Alternatives

Traffic & Safety Analysis

Concept Layouts & Projected Costs

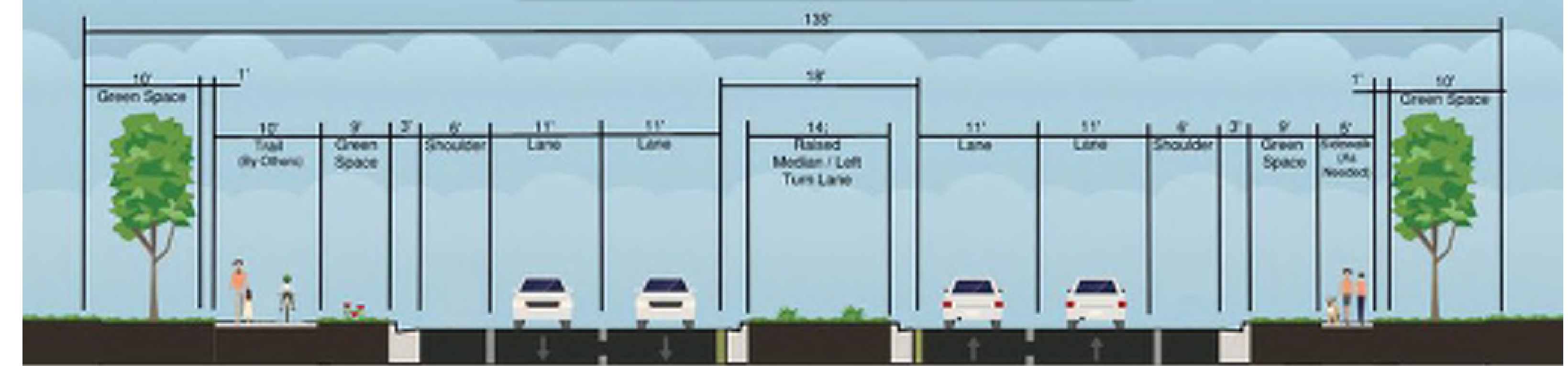
Design Refinement & Project Limits



COMPLETED PROJECTS

- Lake St. Louis Boulevard Intersection Improvements (2017)
- Hopewell / Duello Realignment (2021)
- Route Z Realignment and Signalization (2024)

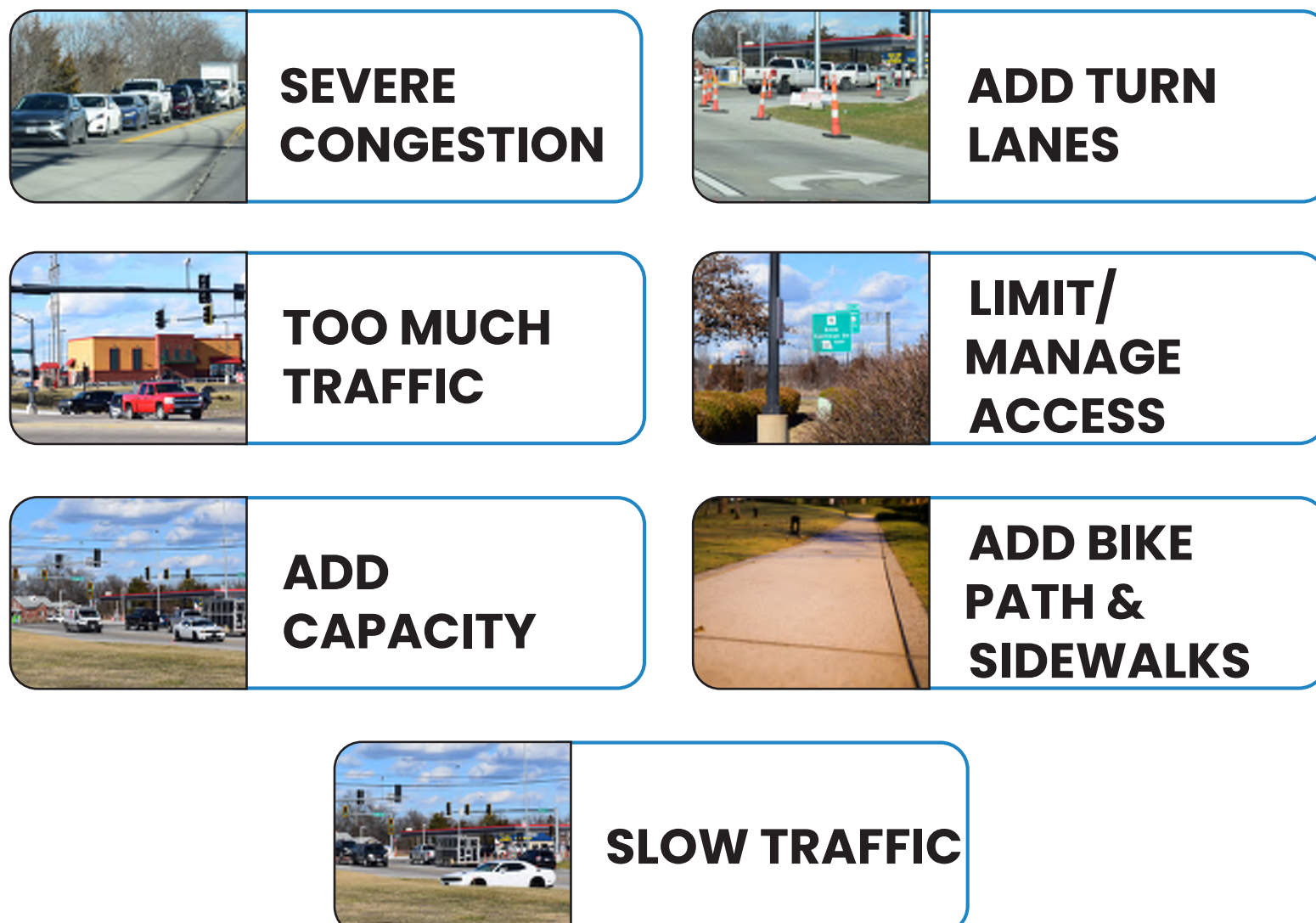
PROPOSED TYPICAL SECTION



EXISTING ROUTE N



PUBLIC FEEDBACK



ROUTE N CORRIDOR OBJECTIVES

- Reduce congestion and delays
- Improve access and connectivity
- Improve safety for all users
- Accommodate bikes and pedestrians
- Control access along the corridor
- Plan for growth and development

PROPOSED RENDERING



PROPOSED FEATURES

- Add Lanes in Each Direction
- Increase Intersection Capacity
- Shoulder, Roundabouts, Green Space Buffer, Improve Curves
- Shared-Use Path, Sidewalk Connections, Traffic Calming
- Median Divided
- Manage Access Points