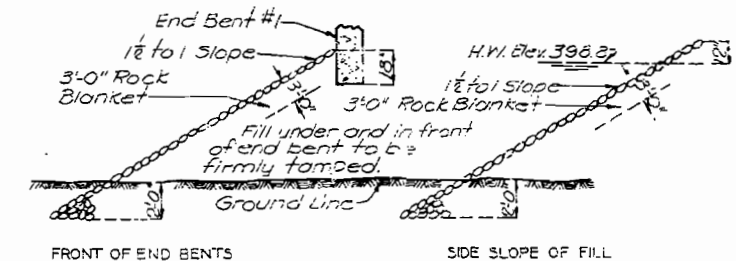
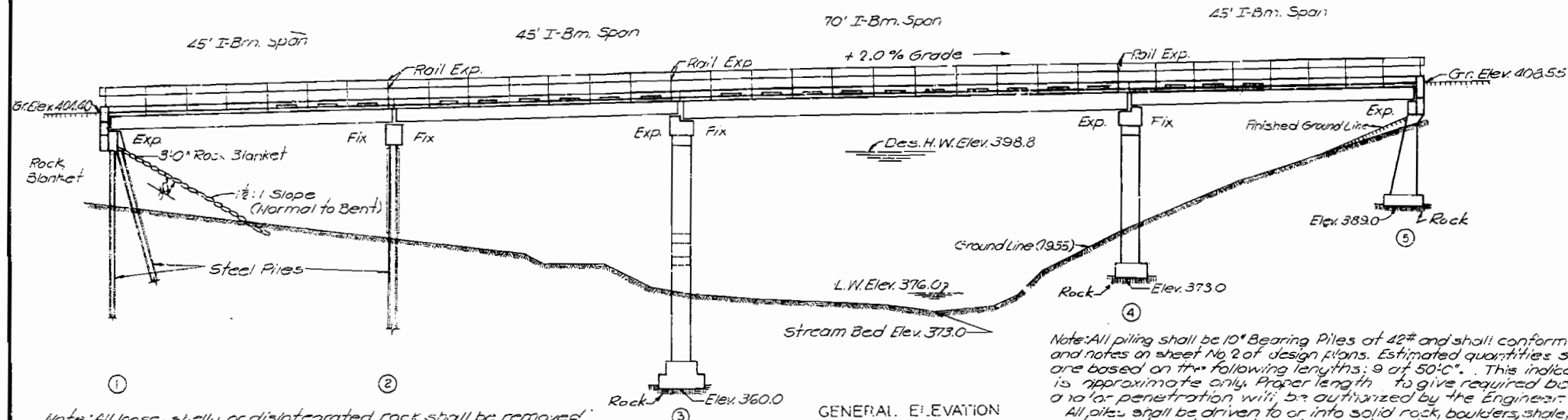


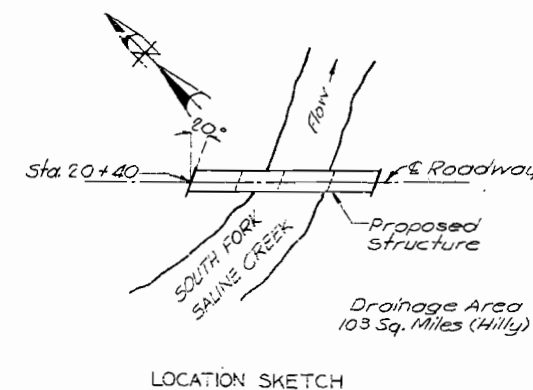
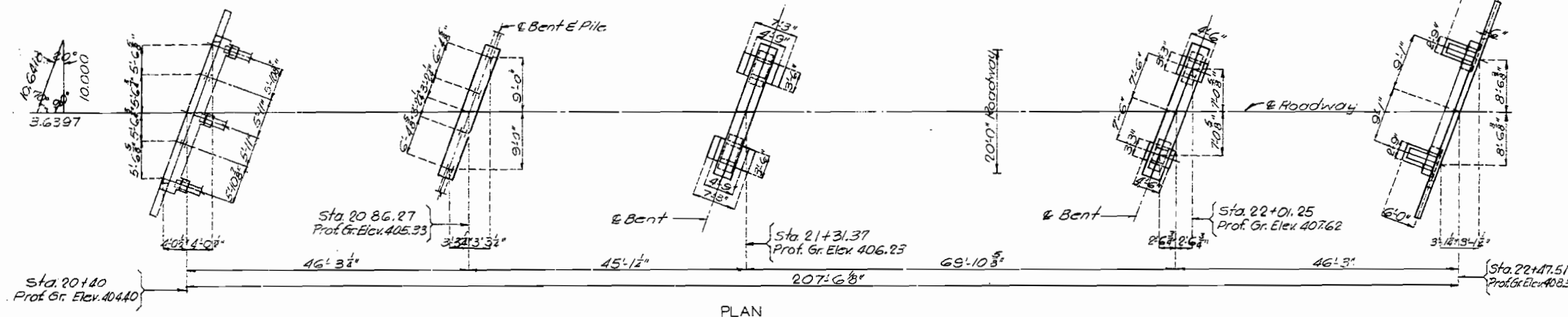
MISSOURI STATE HIGHWAY DEPARTMENT

FED. ROAD DIST. NO.	STATE	FED. AID PROJ. NO.	FISCAL YEAR	SHEET NO.	TOTAL SHEETS
5	MO.	5-1521(1)	19		



GENERAL NOTES:

Design Specifications A.A.S.H.O. (1953).
 Loading H10-44.
 Structural Steel Stress 18,000 #/sq. in.
 Reinforcing Steel Stress 18,000 #/sq. in.
 Concrete Class "B" Stress 1,000 #/sq. in.
 All concrete shall be Class "B".
 Rivets 3/4"; holes 13/16" except in handrail where rivets shall be 5/8" holes.
 Qualification of welding operators will be required.
 Paint: Shop, none; Field, contact surfaces of bare field connections on coat of red lead and surfaces in contact with soil after erection three coats of red lead. No other paint. To be applied by Contractor except as noted for steel piles. Red lead required shall be furnished by Contractor. Payment for cleaning and painting such surfaces will be included in unit price bid for Fabricated Structural Steel.
 See Section 22-9.6 of Standard Specifications for required painting of steel piles.
 Where joint filler is specified on the plans it shall conform with the requirements for Premoulded Material for Filler as given in section 59-22.D of Standard Specifications.
 Permits must be obtained for all truck loads over legal lengths. Items of material which cannot be transported by truck with overall length less than 75'-0" must be shipped by rail to the specified shipping point.
 Field connections shall be riveted except as noted in handrail details or, if the Contractor desires to eliminate all field riveting on this project, he may use machine bolts except for the 3/8" rivet head bolts specified for handrail. Heads and nuts of machine bolts shall be American Standard Regular.



ESTIMATED QUANTITIES			
Items	Subst.	Superst.	Total
Class 1 Excavation for Structures. Cu. Yds.	80		80
Class 2 Excavation for Structures. Cu. Yds.	84		84
Class "B" Concrete. Cu. Yds.	879	100.8	979.8
Fabricated Structural Steel. Lbs.		100,900	100,900
Gray Iron Alloy Castings. Lbs.		2120	2120
Reinforcing Steel. Lbs.	9750	19530	29280
Steel Pile in place. Lin. Ft.	423		423
Steel Pile cut-offs. Lin. Ft.	27		27

Note: Excavation for bridge made above Elev. 377.0 will be paid for as Class 1 Excavation for Structures.
 Excavation for bridge made below Elev. 377.0 will be paid for as Class 2 Excavation for Structures.
 * Final pay weight for Fabricated Structural Steel will be based on using field rivets except for bolted connections specified on handrail.

B.M. #3A Elev. 393.38 - spike in trunk 30' E. 38' N. Sta. 20+60 (U.S.G.S. Datum)

BRIDGE OVER SOUTH FORK OF SALINE CREEK
 STATE ROAD FROM RTE. SNN AT STE. GENEVIEVE CO. LINE EAST TO RTE. 100 MILES S. OF ST. MARYS
 PROJECT NO. S-1521(1) (SW) STA. 20+40
 PERRY COUNTY

SUBMITTED BY J. A. Williams DATE 12-16-1955
 APPROVED BY Roy M. Whitten DATE 12-16-1955

STDG10R3
 N-62

Drawn NOV. 1955 by W.G.S.
 Checked Dec. 1955 by C.S.A.

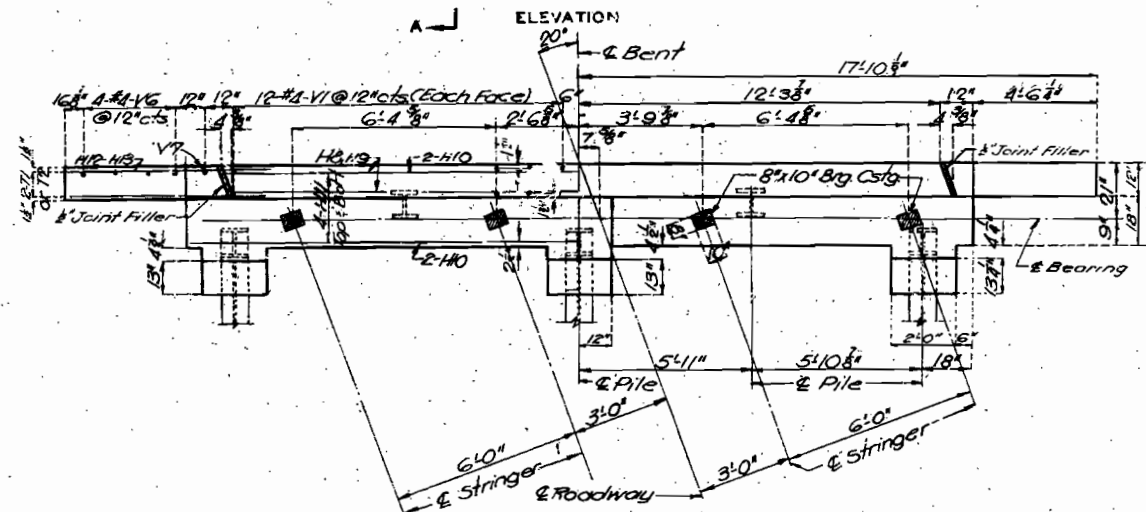
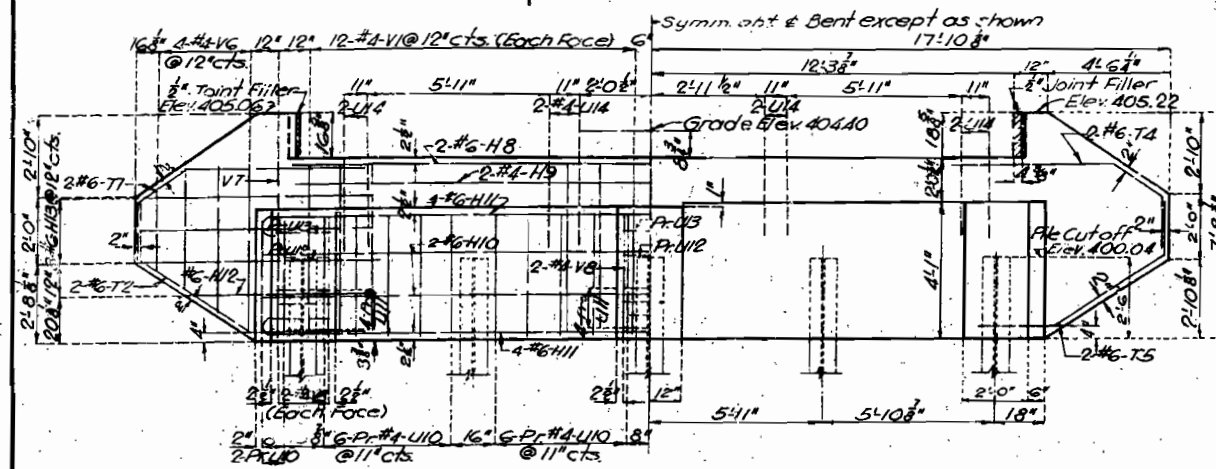
Note: This drawing is not to scale. Follow dimensions.

Sheet No. 1 of 7.

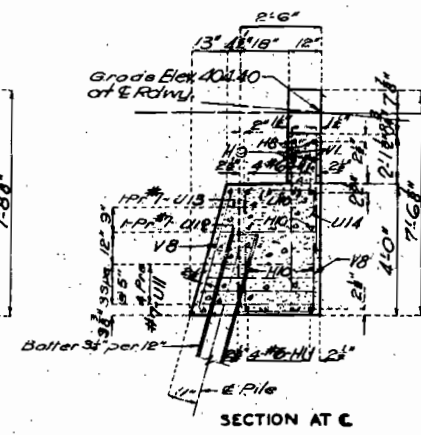
SEE FINAL PLANS BROWN-LINES

MISSOURI STATE HIGHWAY DEPARTMENT

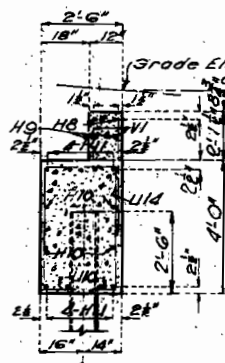
FED. ROAD DIST. NO.	STATE	FED. AID PROJ. NO.	FISCAL YEAR	SHEET NO.	TOTAL SHEETS
5	MO	3-138(111)	19		



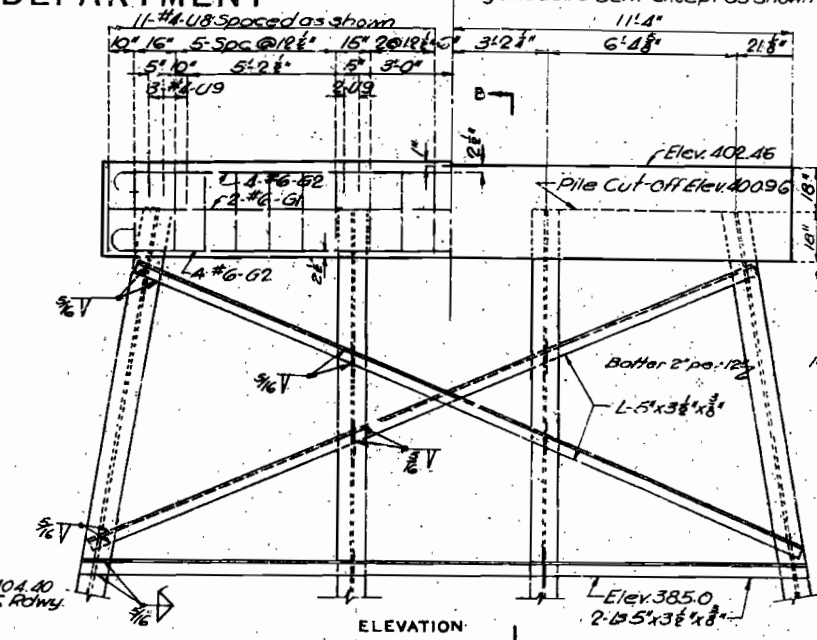
DETAILS OF END BENT NO. 1



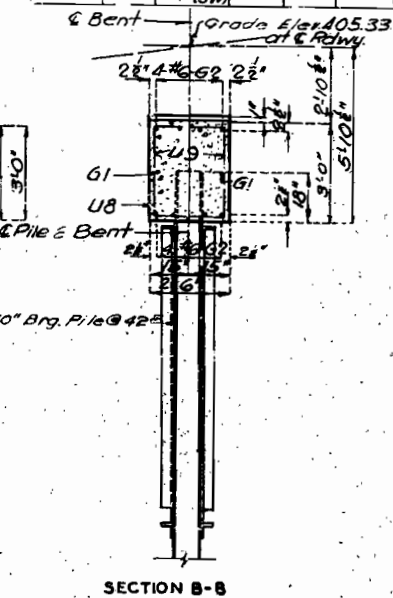
SECTION A-A



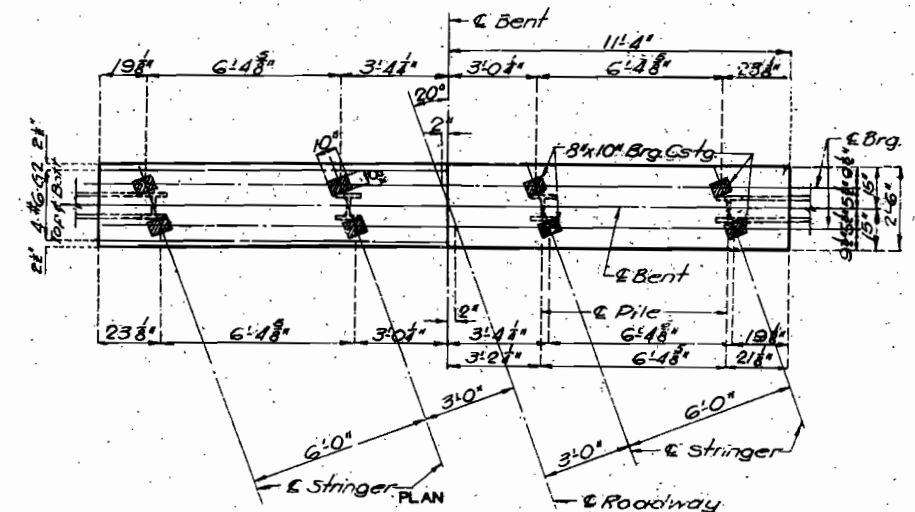
SECTION A-A



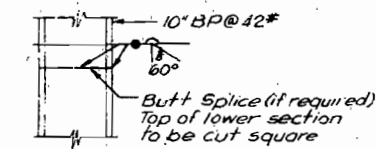
ELEVATION B-B



SECTION B-B



DETAILS OF INTERMEDIATE BENT NO. 2



DETAILS OF STEEL PILE

BRIDGE OVER SOUTH FORK OF SALINE CREEK

STATE ROAD FROM RTE. 30N AT STE. GENEVIEVE CO. LINE EAST TO RTE. 61
ABOUT 10.0 MILES S. OF ST. MARYS
PROJECT NO. S-152(1) (SW) STA. 20+40

PERRY

COUNTY

Assembled by J.E.L. & W.G.S.
Checked Dec. 1955 by C.S.A.

Note: This drawing is not to scale. Follow Dimensions

Sheet No. 2 of 7

NO CONSTRUCTION CHANGES

N-62

MISSOURI STATE HIGHWAY DEPARTMENT

FED. ROAD DIST. NO.	STATE	FED. AID PROJ. NO.	FISCAL YEAR	SHEET NO.	TOTAL SHEETS
5	MO.	5-782(1) (C&V)	19		

COMPLETE BILL OF REINFORCING STEEL

Bending Sketches and Cutting Diagrams

No.	Size	Length	Mark	Location
End Bent No. 1				
2	#6	24'6"	H8	Backwall
2	#6	24'6"	H9	"
4	#6	26'3"	H10	Beam
8	#6	28'3"	H11	"
2	#6	4'9"	H12	Wing
6	#6	6'6"	H13	"
2	#6	9'6"	T1	"
2	#6	9'0"	T2	"
56	#4	7'3"	U10	Beam
24	#7	8'0"	U11	"
6	#7	7'6"	U12	"
6	#7	7'3"	U13	"
8	#4	3'3"	U14	"
48	#4	3'6"	V1	Backwall
4	#4	10'3"	V6	Wing
2	#4	7'3"	V7	"
12	#4	3'9"	V8	Beam
2	#6	9'3"	T4	Wing
2	#6	9'0"	T5	"

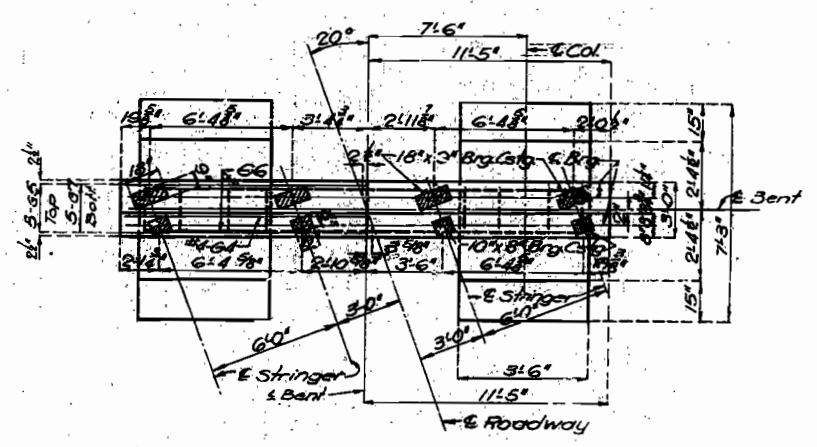
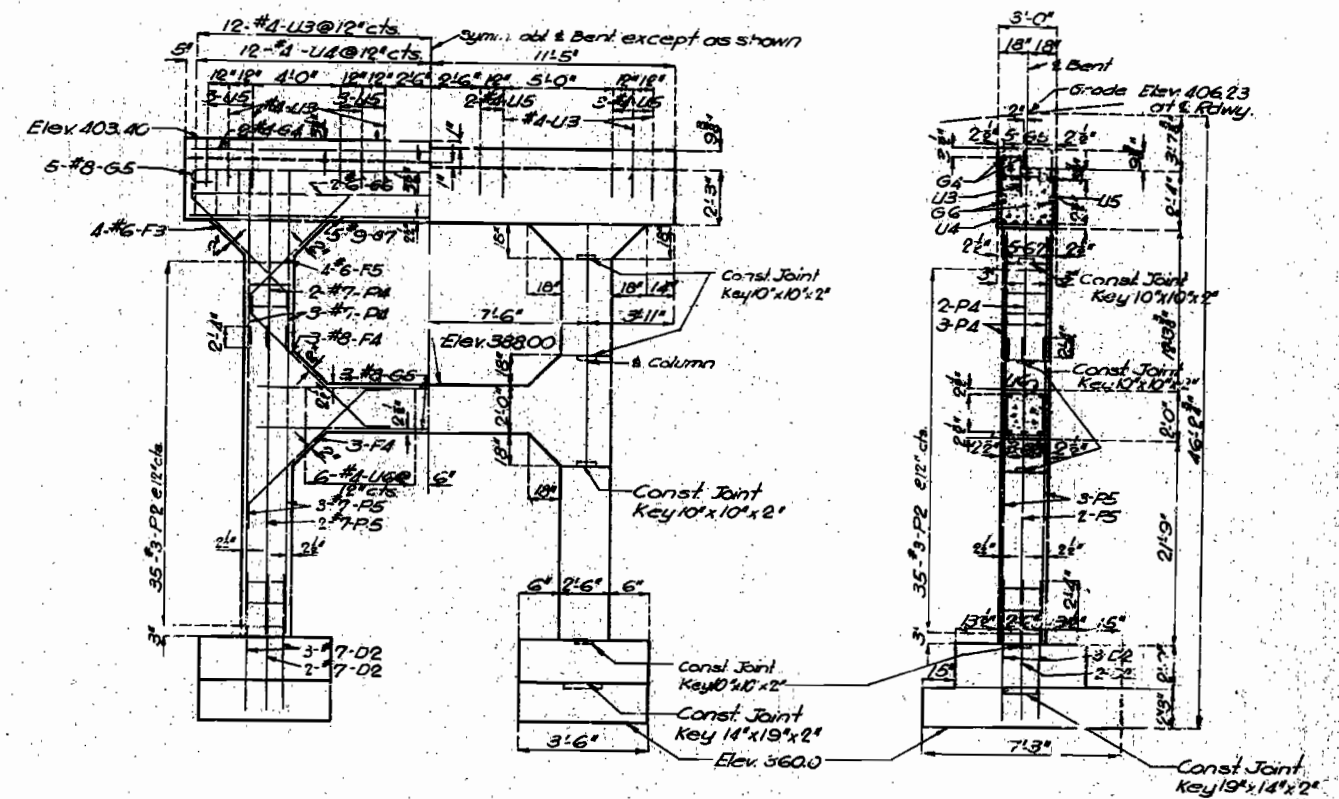
Int. Bt. No. 2				
8	#6	24'6"	G2	Beam
2	#6	22'3"	G1	"
22	#4	10'9"	U8	"
10	#4	3'3"	U9	"

Int. Bt. No. 3				
16	#7	6'6"	D2	Footings
8	#6	8'0"	F3	Haunch
12	#6	9'3"	F4	Tie Beam
8	#6	8'0"	F5	Haunch
2	#4	22'6"	G4	Beam
5	#6	24'6"	G5	"
2	#6	22'6"	G6	"
5	#6	22'6"	G7	"
6	#6	17'0"	G8	Tie Beam
10	#3	9'9"	P2	Column
16	#7	12'6"	P4	"
16	#7	27'9"	P5	"
30	#4	3'3"	U3	Beam
23	#4	10'6"	U4	"
11	#4	3'9"	U5	"
12	#4	8'9"	U6	Tie Beam
8	#2	19'9"	P1	Headwall

Int. Bt. No. 4				
16	#6	4'0"	D1	Footings
8	#6	8'0"	F3	Haunch
8	#6	8'0"	F5	"
2	#4	22'6"	G4	Beam
5	#6	24'6"	G5	"
2	#6	22'6"	G6	"
5	#6	22'6"	G7	"
40	#3	8'9"	P7	Column
16	#6	23'3"	P5	"
23	#4	10'6"	U4	Beam
11	#4	3'9"	U5	"
30	#4	3'3"	U3	"
8	#2	19'9"	P1	A.B. Well

No.	Size	Length	Mark	Location
End Bent No. 5				
14	#6	4'0"	D1	Footings
6	#6	7'0"	F1	Haunch
6	#6	7'0"	F2	"
4	#6	28'6"	H1	Beam
2	#4	22'6"	H2	Backwall
4	#6	24'6"	H3	Beam
5	#9	22'6"	H4	"
10	#5	9'6"	H5	Wing
2	#6	8'6"	H6	"
2	#5	7'6"	H7	"
4	#6	12'0"	T3	"
23	#4	11'3"	U1	Beam
8	#4	3'0"	U2	"
24	#4	3'6"	V1	Backwall
5	#4	8'3"	V2	Wing
1/2	#4	5'6"	V3	"
14	#4	14'3"	V4	Column
22	#3	10'6"	K5	"

Superstructure				
314	#5	2'9"	C1	Curb
12	#5	27'0"	C2	"
12	#6	21'0"	C3	"
12	#6	23'6"	C4	"
18	#6	24'9"	C6	"
712	#4	22'0"	S1	Slab
128	#4	23'9"	S2	"
29	#4	25'0"	S3	"
79	#4	22'9"	S4	"
8	#4	23'6"	S5	"
64	#4	23'3"	S6	"
96	#4	24'3"	S7	"



DETAILS OF INT. BENT NO. 3

BRIDGE OVER SOUTH FORK OF SALINE CREEK

STATE ROAD FROM RTE. 50N AT STE. GENEVIEVE CO. LINE EAST TO RTE. 61

ABOUT 10.0 MILES S. OF ST. MARYS

PROJECT NO. 3-52(1) (CSW) STA. 20+40

PERRY COUNTY

Assembled Nov. 1935 by H.G.M. & W.G.S.

Checked Dec. 1935 by C.S.A.

Note: This drawing is not to scale. Follow dimensions.

Scale: 1/4" = 1'-0"

SEE FINAL PLANS BROWN LINES

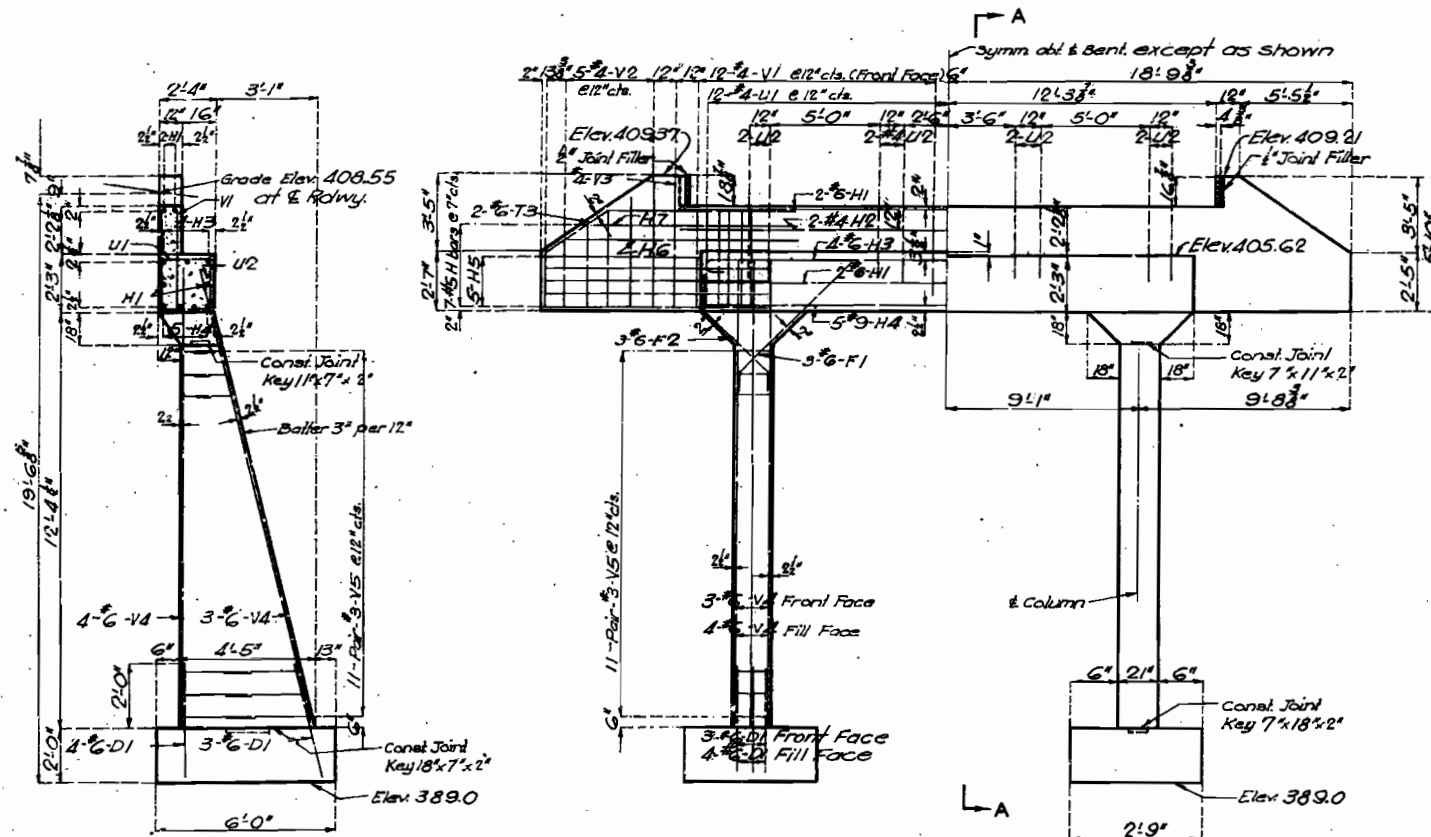
2 Col. 2 in. 20' or 22' 1/2" Square & Shaded 1/10

FINISHED

N-62

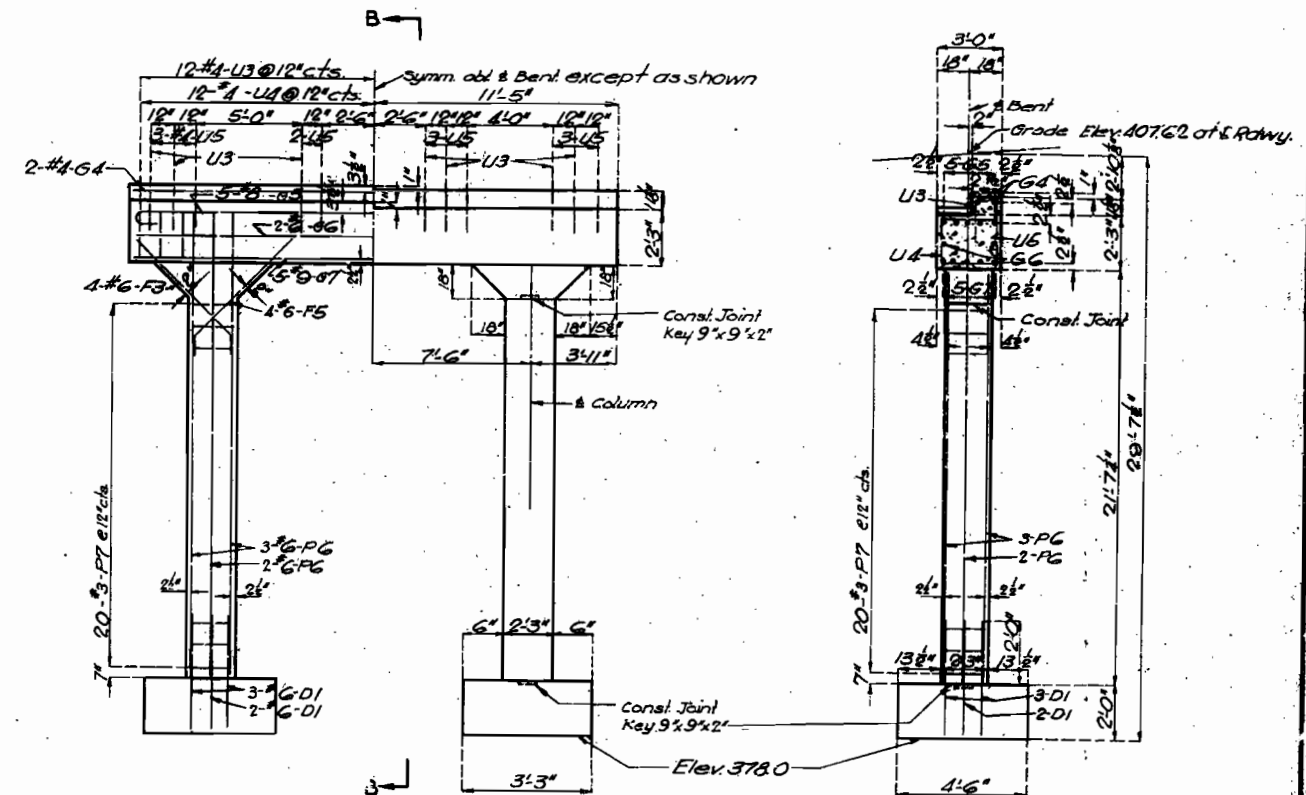
MISSOURI STATE HIGHWAY DEPARTMENT

FED. ROAD DIST. NO.	STATE	FED. AID PROJ. NO.	FISCAL YEAR	SHEET NO.	TOTAL SHEETS
5	MO.	3-152(1)	19		



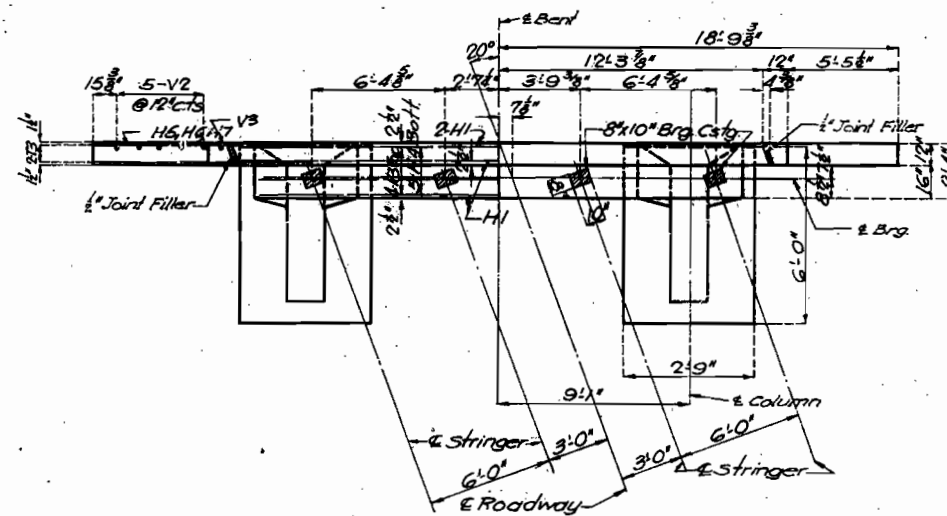
SECTION A-A

ELEVATION



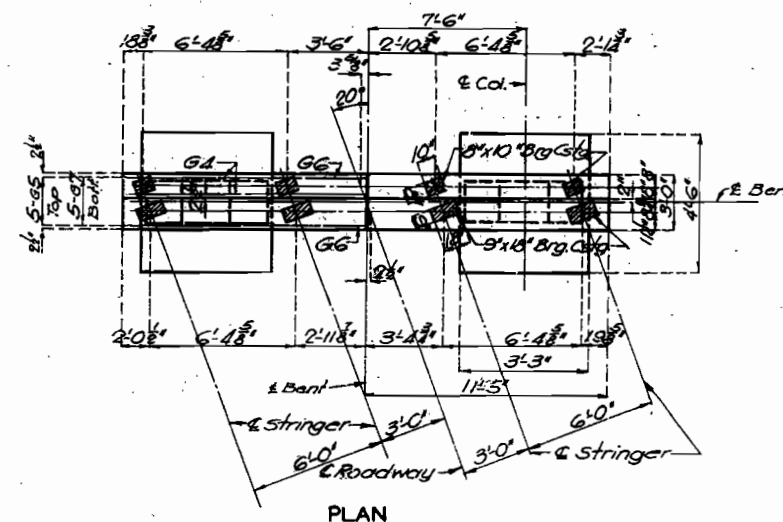
ELEVATION

SECTION B-B



PLAN

DETAILS OF END BENT NO. 5



PLAN

DETAILS OF INT. BENT NO. 4

BRIDGE OVER SOUTH FORK OF SALINE CREEK

STATE ROAD FROM RTE. 50N AT STE. GENEVIEVE CO. LINE EAST TO RTE. 61

ABOUT 10.0 MILES S. OF ST. MARYS

PROJECT NO. 5-152(1)

(SW) STA. 20+40

PERRY

COUNTY

Assembled NOV 1955 by J.E.L.W.G.S.
Checked Dec. 1955 by C.S.A.

Note: This drawing is not to scale. Follow dimensions.

Sheet No. 4 of 7

SEE FINAL PLANS BROWN LINES

2 Col. End & 2 Col. Int. 20' or 22' Rwy. Square & Shaded H/O

N-62

三

[illegible]

PART ANCHOR BOLT PLAN

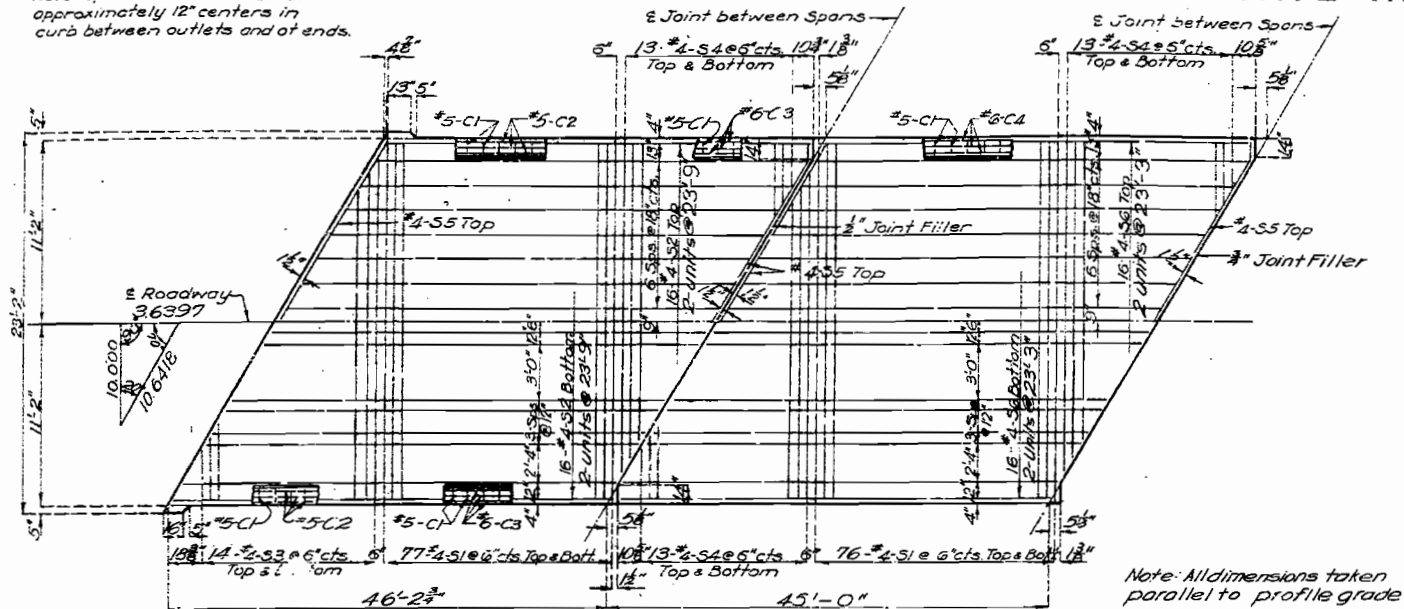
N-62

534

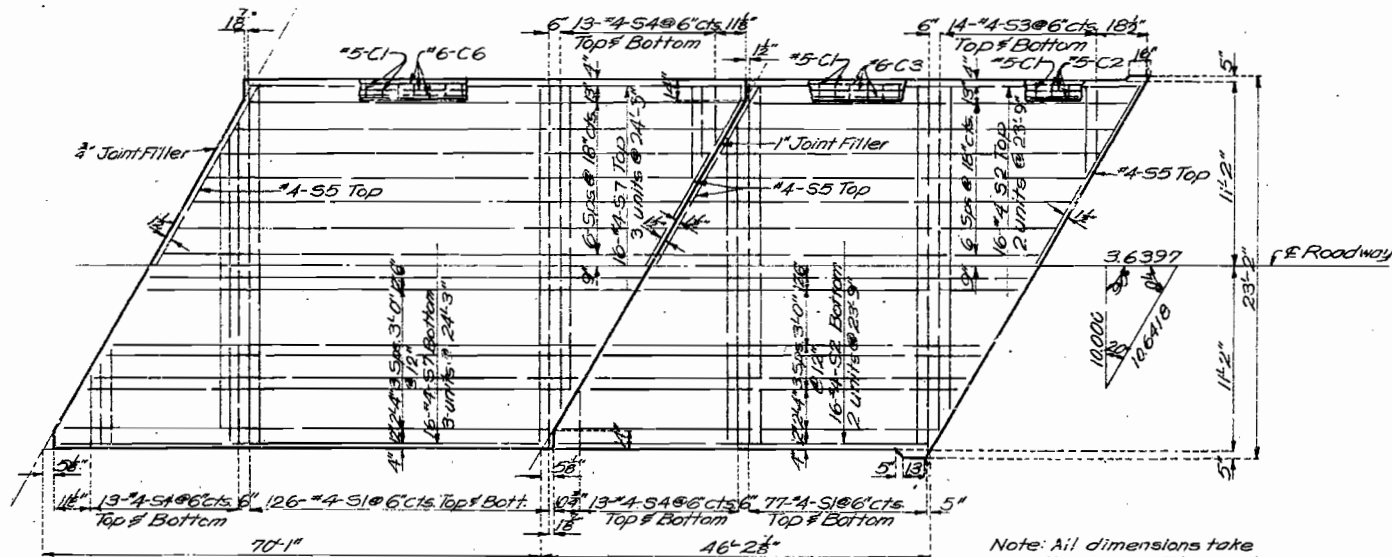
MISSOURI STATE HIGHWAY DEPARTMENT

Note: Space dowel bars C1 at approximately 12" centers in curb between outlets and at ends.

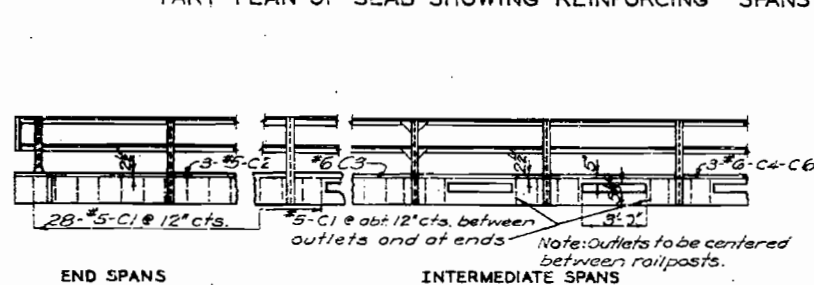
FED. ROAD DIST. NO.	STATE	FED. AID PROJ. NO.	FISCAL YEAR	SHEET NO.	TOTAL SHEETS
5	MO.	5-76(47)	(SW)	19	



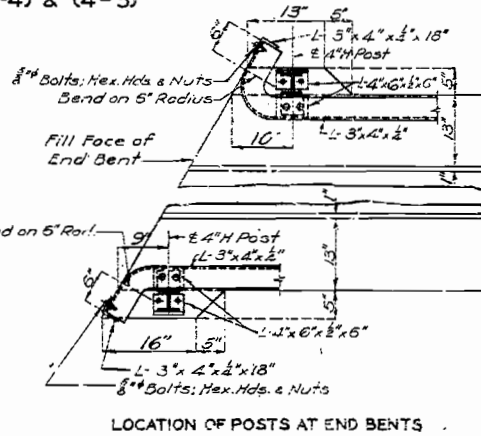
PART PLAN OF SLAB SHOWING REINFORCEMENT SPANS (1-2) & (2-3)



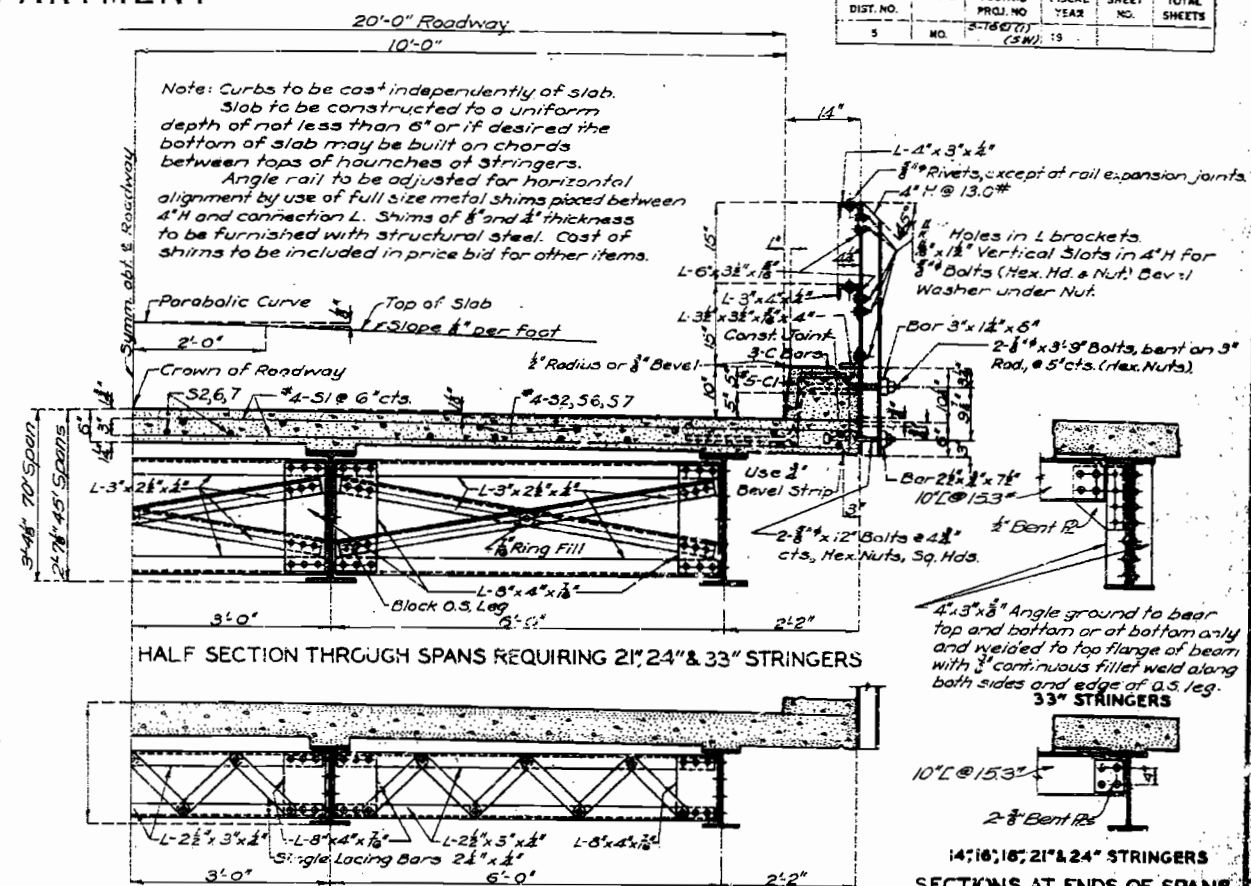
PART PLAN OF SLAB SHOWING REINFORCING SPANS (3-4) & (4-5)



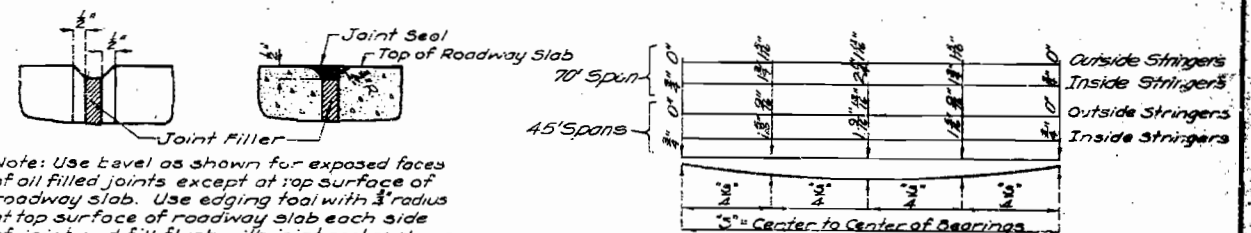
Note: Top of curbs under end posts shall be finished to a smooth surface parallel to grade. Not less than one nor more than four soft lead plates of 1/8" thickness shall be used under angles of each end rail post for aligning rail to correct elevation. Plates shall be 8 1/2" x 6" and shall be punched 3/8" on same gauge as the angles. No grouting permitted. Cost of lead plates to be included in price bid for other items.



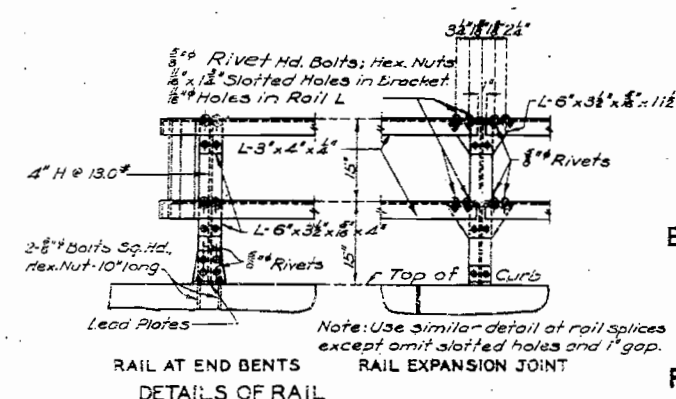
LOCATION OF POSTS AT END BENTS



HALF SECTION THROUGH SPANS REQUIRING 14", 16" & 18" STRINGERS



DETAILS OF BEVEL FOR FILLED JOINTS



RAIL AT END BENTS

Note: Slab shall be built parallel to grade and to a minimum thickness of 6". Dead load deflection, vertical curve (if any), crown and any difference in depth of stringers shall be taken care of by haunching to stringers by the amounts shown above. This additional concrete is included in "Estimated Quantities".

SLAB HAUNCHING DIAGRAM

BRIDGE OVER SOUTH FORK OF SALINE CREEK

STATE ROAD FROM RTE. SNNAT STE. GENEVIEVE CO. LINE EAST TO RTE. 61 ABOUT 10.0 MILES S. OF ST. MARYS

PROJECT NO. S-1521 (D) (SW) STA. 20+40

PERRY COUNTY

Assembled Nov. 1955 by H.G.M. & G.W.P.
Checked Dec. 1955 by C.S.A.

Note: This drawing is not to scale. Follow dimensions.

NO CONSTRUCTION CHANGES

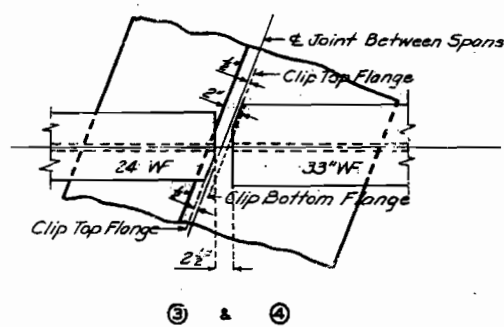
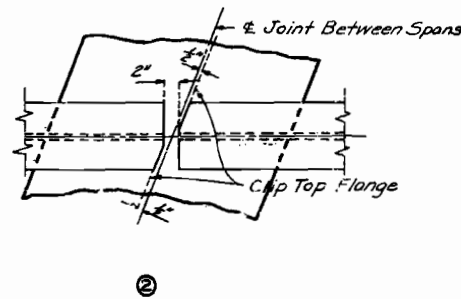
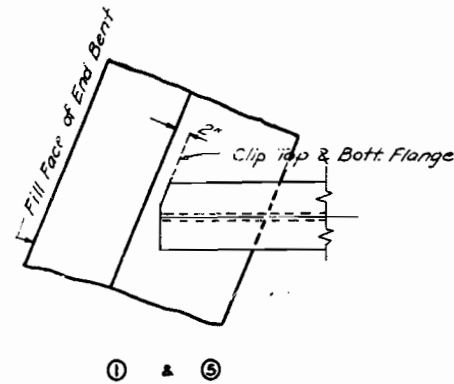
Sheet No. 6 of 7

N-62

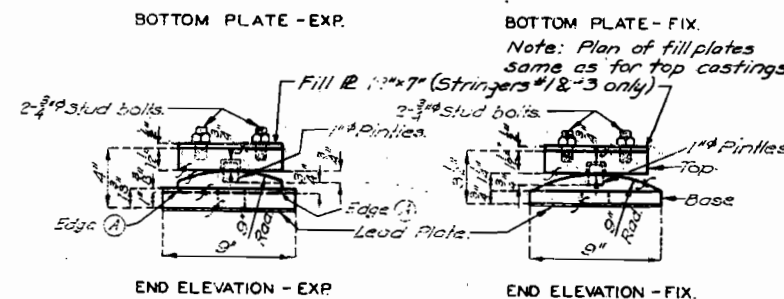
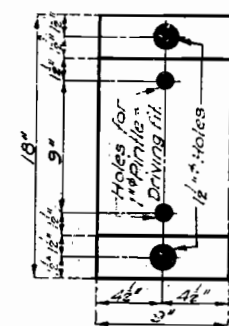
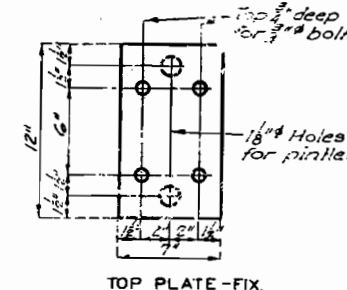
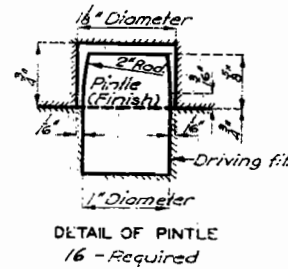
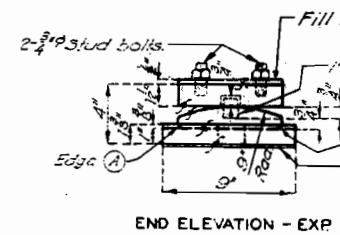
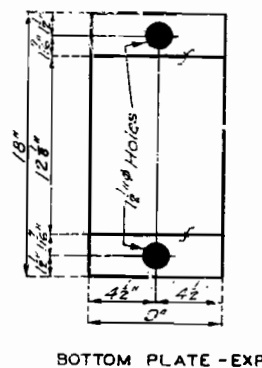
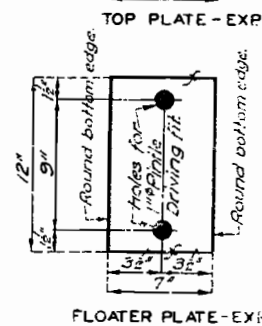
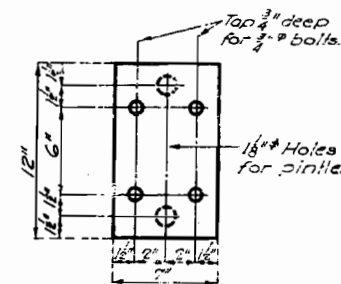
L-20-H10
Rev. Feb. 1955

MISSOURI STATE HIGHWAY DEPARTMENT

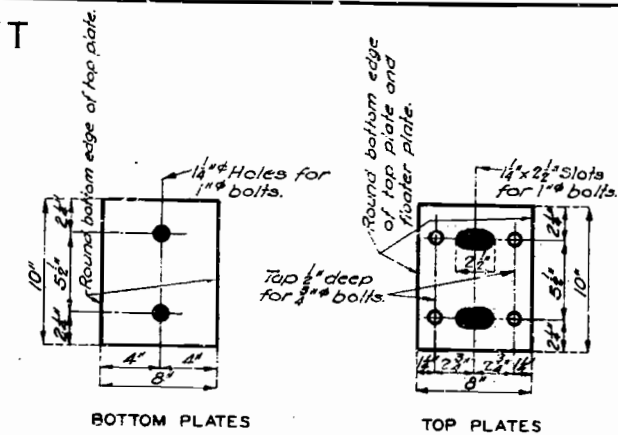
FED. ROAD DIST. NO.	STATE	FED. AID PROJ. NO.	FISCAL YEAR	SHEET NO.	TOTAL SHEETS
5	MO	5-152(1) (SW)	19		



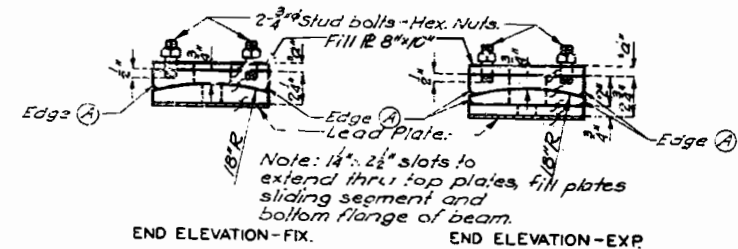
DETAILS OF STRINGER FLANGES NEAR BENTS



Required 4 Sets for 70' Span, Each set consists of 5 Plates each.
TYPE "B"



Note: Plan of fill plates same as for top castings.



Required: 12 Sets for 45' Span, Each set consists of 5 plates each.

TYPE "C"

GENERAL NOTES:

Finish all surfaces marked *f*.

Material for Type "B" and Type "C" castings shall be either gray iron alloy or cast steel but payment will be made as Gray Iron Alloy.

All bolts and nuts and tapered pins shall be paid for as structural steel.

Anchor bolts for Type "B" Castings.

shall be 1 1/2" swaged bolts with Hex. nuts and shall extend 12" into concrete.

Anchor bolts for Type "C" castings shall be 1" swaged bolts, no heads or nuts and shall extend 10" into concrete. Top ends of anchor bolts shall be above the top of castings but not higher than 3" below the top surface of the bottom flange of beam.

Lead Plates under bearings shall be approximately 6" thickness and weigh 5 1/2 lb. Cost of lead plates shall be included in price bid for other items.

Edge (A) to be rounded. (1/4" - 1/2" Radius)

Fill plates may be made as part of top casting if desired but payment for additional cast metal will be made as Fabricated Structural Steel.

Fill Plate Thickness "a"	#1	#2	#3	#4
Stringer	1"	1"	1"	1"
Bt. No. 1	1"	1"	1"	1"
Bt. No. 2 (Span 1-2)	1"	1"	1"	1"
Bt. No. 3	1"	1"	1"	1"
Bt. No. 4	1"	1"	1"	1"
Bt. No. 5	1"	1"	1"	1"

DETAILS OF BEARING CASTINGS

Note: This drawing is not to scale. Follow dimensions.

BRIDGE OVER SOUTH FORK OF SALINE CR.

STATE ROAD FROM RTE. 30N AT STE. GENEVIEVE CO. LINE EAST TO RTE. 61

ABOUT 10.0 MILES S. OF ST. MARYS

PROJECT NO. 5-152(1)

(SW) STA. 20+40

PERRY

COUNTY

Assembled Nov. 1955 by H.G.M. & W.J.K.
Checked Dec. 1955 by C.S.A.

Sheet No. 7 of 7.

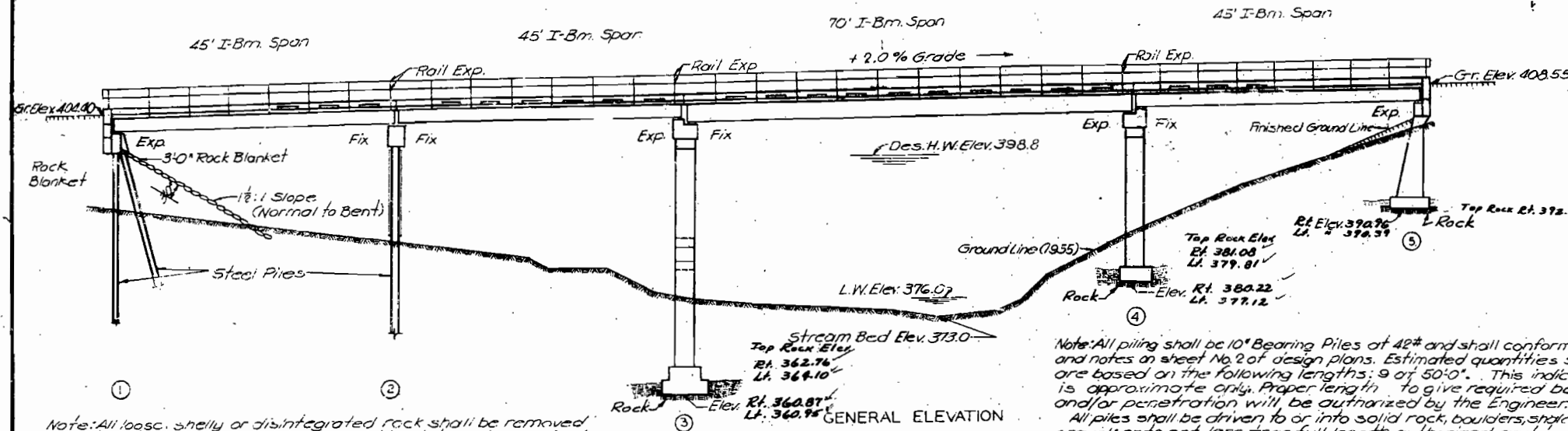
NO CONSTRUCTION CHANGES

N-62

MISSOURI STATE HIGHWAY DEPARTMENT

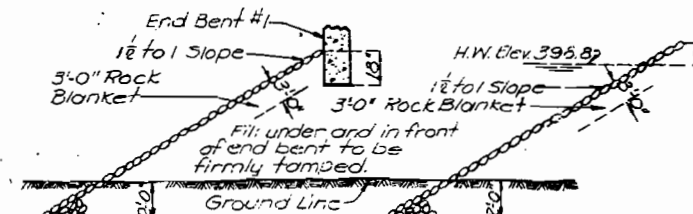
FED. ROAD DIST. NO.	STATE	FED. AID PROJ. NO.	FISCAL YEAR	SHEET NO.	TOTAL SHEETS
5	MO.	7152(1) (SW)	19	11	26

FINAL PLANS



Note: All loose, shelly or disintegrated rock shall be removed and the footings placed on hard, solid undisturbed rock. If soft rock or shale is encountered, the footings shall be carried at least 18" into and cast against vertical faces of same.

Note: All piling shall be 10" Bearing Piles at 42" and shall conform with details and notes on sheet No. 2 of design plans. Estimated quantities shown on plans are based on the following lengths: 9 at 50'-0". This indicated length is approximate only. Proper length to give required bearing and/or penetration will be authorized by the Engineer. All piles shall be driven to or into solid rock, boulders, shale, or cemented gravel; or to not less than full length authorized and to sustain a load of at least 28 tons per pile. A gravity hammer was used for driving.

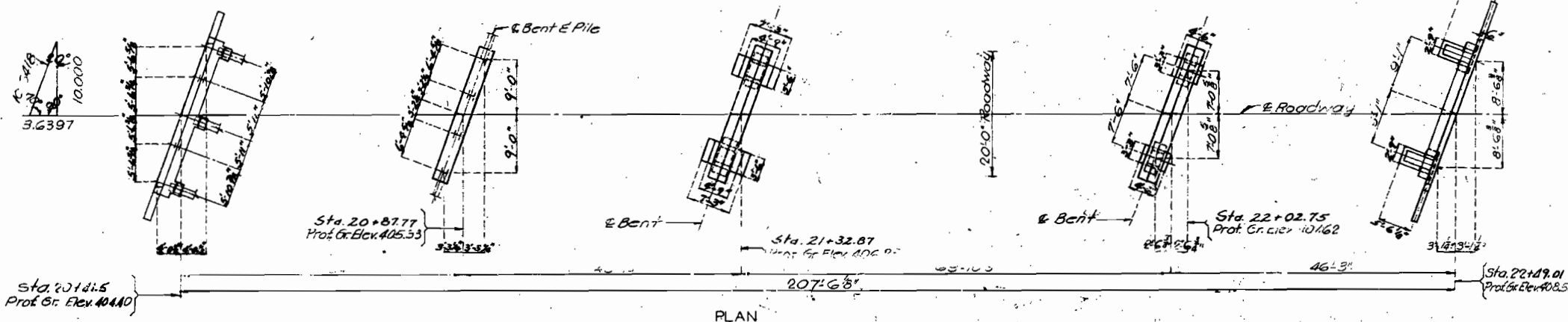


Note: 3'-0" Rock Blanket shall be placed on fills at End Bent No. 1 as shown in sketches. See Road Plans for Quantities.

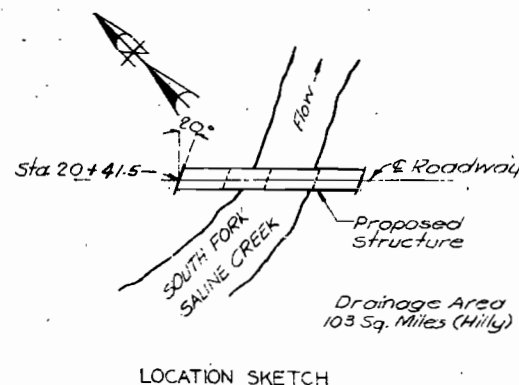
ROCK BLANKET SKETCHES

GENERAL NOTES:

Design Specifications A.A.S.H.O. (1953),
 Loading H10-44.
 Structural Steel Stress 18,000 #/sq. in.
 Reinforcing Steel Stress 18,000 #/sq. in.
 Concrete Class "B" Stress 1,000 #/sq. in.
 All concrete shall be Class "B".
 Rivets 3/4" holes to excess; in fill shall where rivets shall be 8" holes.
 Qualification of welding operators will be required.
 Paint: Shop prime; Field: Contact surfaces of lattice field connections are coated red iron and white zinc inaccessible after erection three coats of red iron. No time limit to be applied by Contractor except as noted for steel piles. Red lead required shall be furnished by Contractor. Payment for cleaning and painting such surfaces will be included in unit price, bid for fabricated structural steel.
 See Section 22-9.6 of Standard Specifications for required painting of steel piles.
 Where joint filler is specified on the plans, it shall conform with the requirements for Pre-cast Mortar for Filler as given in section 59-22.0 of Standard Specifications.
 Permits must be obtained for all truck loads over legal lengths. Items of material which cannot be transported by truck with overall length less than 75'-0" must be shipped by rail to the specified shipping point.
 Field connections shall be riveted except as noted in handrail details or if the Contractor desires to eliminate all field riveting on this project, he may use machine bolts except for the 3/8" rivet head bolts specified for handrail. Heads and nuts of machine bolts shall be American Standard Regular.



PLAN



LOCATION SKETCH

Test Holes
 Bent #3 - 19 Lin. Ft.
 Bent #4 - 17 Lin. Ft.
 Bent #5 - 18 Lin. Ft.

Class I Excavation below plan	Cu. Yds.	0.5	0.5
FINAL QUANTITIES			
Items	Substr.	Superst.	Total
Class I Excavation for Structures. Cu. Yds.	65		65
Class 2 Excavation for Structures. Cu. Yds.	71.5		71.5
Class "B" Concrete. Cu. Yds.	86.1	100.8	186.9
* Fabricated Structural Steel. Lbs.	1,080	101,440	102,520
Gray Iron Alloy Castings. Lbs.		2,120	2,120
Reinforcing Steel. Lbs.	9,150	19,530	28,680
Steel Pile in place. Lin. Ft.	425		425
Steel Pile cut-offs. Lin. Ft.	25		25
Test Holes. Lin. Ft.			54

Note: Excavation for bridge made above Elev. 373.0 will be paid for as Class I Excavation for Structures.
 Excavation for bridge made below Elev. 373.0 will be paid for as Class 2 Excavation for Structures.
 * Final pay weight for Fabricated structural steel was based on using field rivets except for bolted connections specified on handrail.

B.M. #44 Elev. 403.14 Spike in root 30" W. Oak 528' Sta. 22+52 (U.S.G.S. Datum)

BRIDGE OVER SOUTH FORK OF SALINE CREEK
 STATE ROAD FROM RTE. 50N AT STE. GENEVIEVE CO. LINE EAST TO RTE. 100
 ABOUT 10.0 MILES S. OF ST. MARYS
 PROJECT NO. S-1521(C) CSW STA. 20+41.5
 PERRY COUNTY

SUBMITTED BY J. A. Williams DATE 12-16-1955
 APPROVED BY R. T. Whitton DATE 12-16-1955
 BRIDGE ENGINEER CHIEF ENGINEER

STDC10R3
 N-62

Drawn NOV. 1955 by W.G.S.
 Checked Dec. 1955 by C.S.A.

Note: This drawing is not to scale. Follow dimensions.

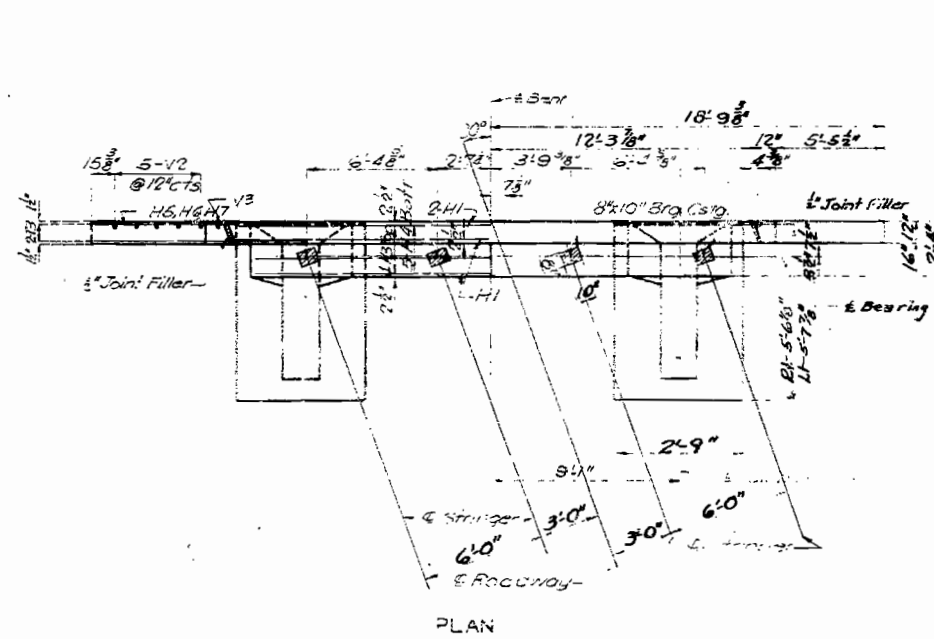
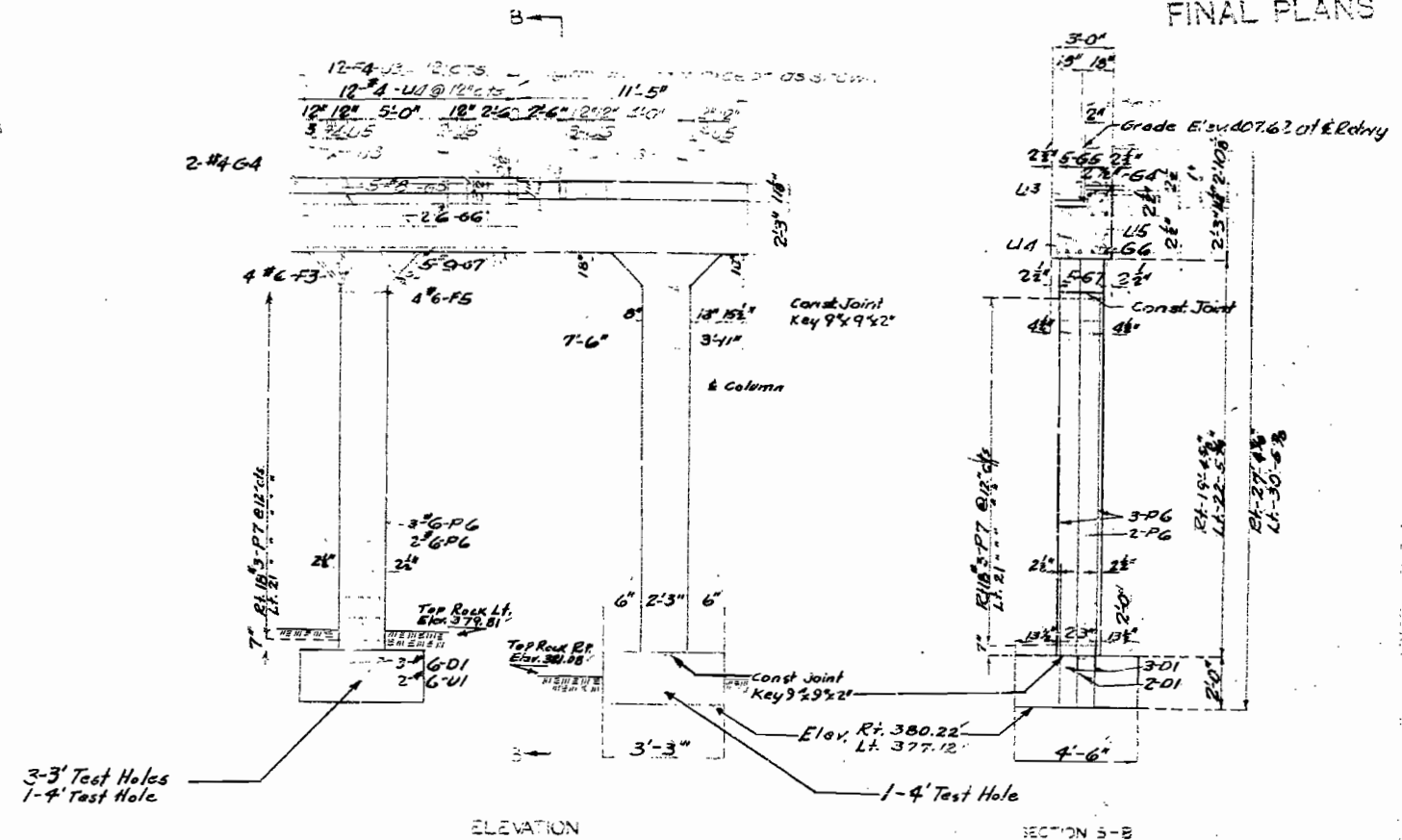
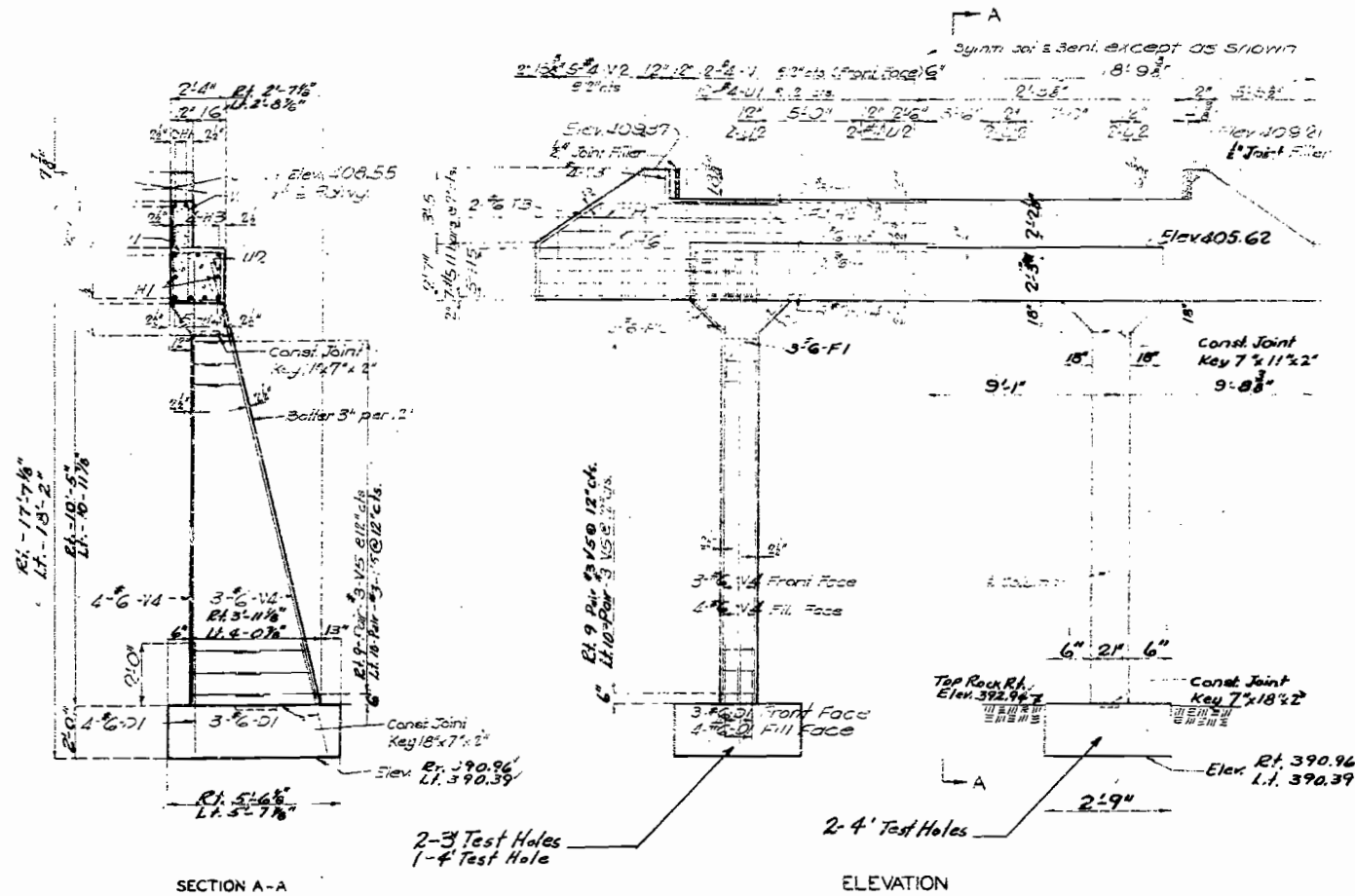
Sheet No. 1A of 3

FINAL PLANS

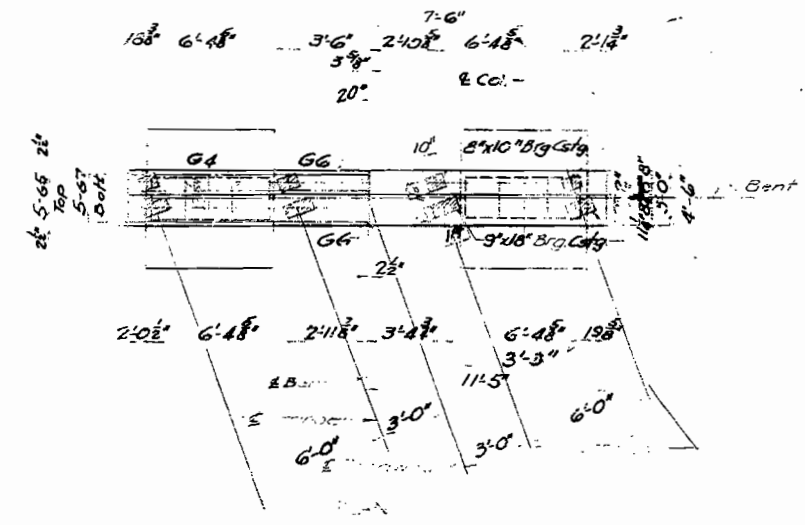
MISSOURI STATE HIGHWAY DEPARTMENT

FED. ROAD DIST. NO.	STATE	FED. AID PROJ. NO.	FISCAL YEAR	SHEET NO.	TOTAL SHEETS
5	MO	3-1521(1)	1941	13	26

FINAL PLANS



DETAILS OF END BENT NO. 5



DETAILS OF INT. BENT NO. 4

TEST HOLES

BENT No. 4	Rt. FTG.	4 L.F.
	Lt. FTG.	13 L.F.
BENT No. 5	Rt. FTG.	3 L.F.
	Lt. FTG.	15 L.F.

35 L.F. BENTS 4 & 5

BRIDGE OVER SOUTH FORK OF SALINE CREEK

STATE ROAD FROM RTE. 50N AT STE. GENEVIEVE CO. LINE EAST TO RTE. 61

ABOUT 3.0 MILES S.W. OF GENEVIEVE

PROJECT NO. 5-62(10) S.W. STA. 20+41.5

PERRY COUNTY

N-62

Assembled Nov. 1955 by J.E.L. & W.G.S.
Checked by C.S.A.

Note: This drawing is not to govern flow dimensions.

Sheet No. 4 of 3

FINAL PLANS

200' Scale & 2' Cont. Int. on 100' Scale
Square & Shaded

537

MISSOURI STATE HIGHWAY DEPARTMENT

FED. ROAD DIST. NO.	STATE	FED. AID PROJ. NO.	FISCAL YEAR	SHEET NO.	TOTAL SHEETS
5	MO.	3-28(10)	19	12	26

FINAL PLANS

COMPLETE BILL OF REINFORCING STEEL

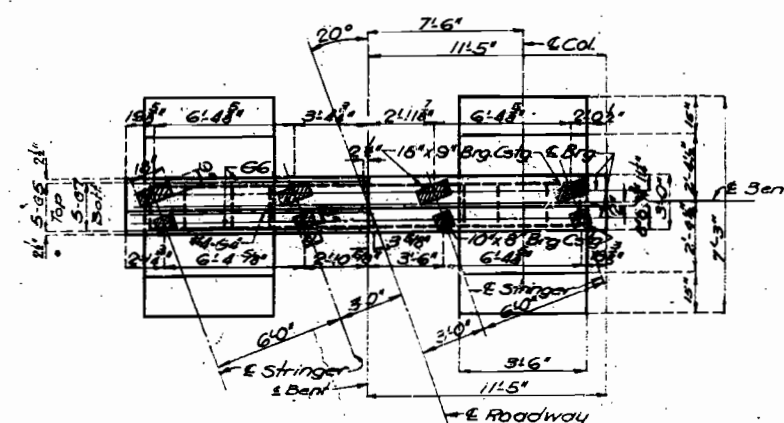
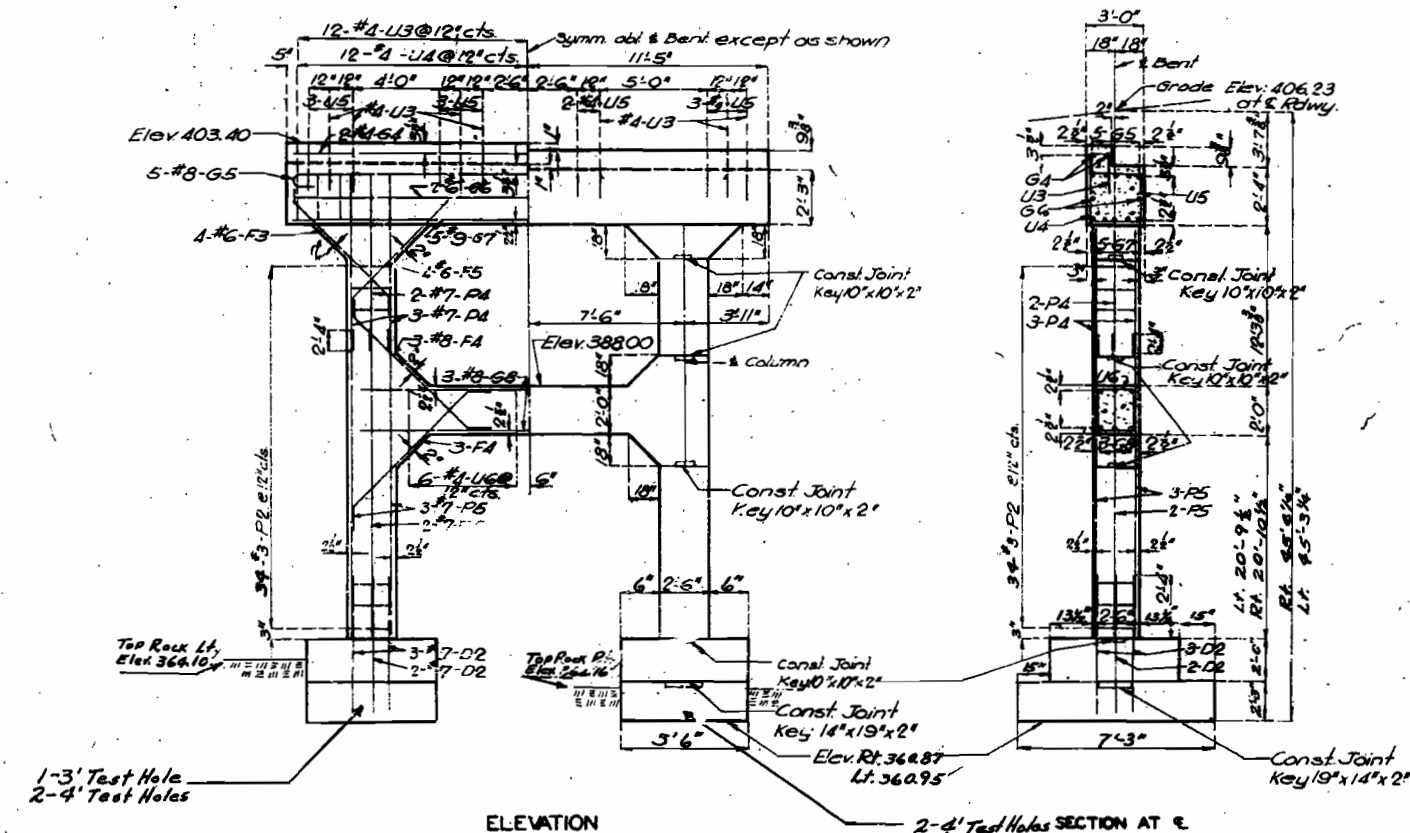
No.	Size	Length	Work	Location
End Bent No. 1				
2	#6	24'6"	H8	Backwall
2	#4	24'6"	H9	"
4	#6	26'3"	H10	Beam
8	#6	28'3"	H11	"
2	#6	4'9"	H12	Wing
6	#6	6'6"	H13	"
2	#6	9'6"	T1	"
2	#6	9'0"	T2	"
56	#4	7'3"	U10	Beam
24	#7	8'0"	U11	"
6	#7	7'6"	U12	"
6	#7	7'3"	U13	"
8	#4	3'3"	U14	"
48	#3	3'6"	V1	Backwall
4	#4	10'3"	V6	Wing
2	#4	7'3"	V7	"
12	#4	3'9"	V8	Beam
2	#6	9'3"	T4	Wing
2	#6	9'0"	T5	"

Int. Bt. No. 2				
8	#6	24'6"	G2	Beam
2	#6	22'3"	G1	"
22	#4	10'9"	U8	"
10	#4	3'3"	U9	"

Int. Bt. No. 3				
16	#7	6'6"	D2	Footing
8	#6	8'0"	F3	Haunch
12	#8	9'3"	F4	Tie Beam
8	#6	8'0"	F5	Haunch
2	#4	22'6"	G4	Beam
5	#8	24'6"	G5	"
2	#6	22'6"	G6	"
5	#9	22'6"	G7	"
6	#8	17'0"	G8	Tie Beam
70	#3	9'9"	P2	Column
16	#7	12'6"	P4	"
16	#7	27'9"	P5	"
30	#4	3'3"	U3	Beam
23	#4	10'6"	U4	"
11	#4	3'9"	U5	"
12	#4	8'9"	U6	Tie Beam
8	#2	19'9"	P1	Headwall

Int. Bt. No. 4				
16	#6	4'0"	D1	Footing
8	#6	8'0"	F3	Haunch
8	#6	8'0"	F5	"
2	#4	22'6"	G4	Beam
5	#8	24'6"	G5	"
2	#6	22'6"	G6	"
5	#9	22'6"	G7	"
40	#3	8'9"	P7	Column
16	#6	23'3"	P6	"
23	#4	10'6"	U4	Beam
11	#4	3'9"	U5	"
30	#4	3'3"	U3	"
8	#2	19'9"	P1	A.B. Well

Bending Sketches and Cutting Diagrams



DETAILS OF INT. BENT NO. 3

BRIDGE OVER SOUTH FORK OF SALINE CREEK

STATE ROAD FROM RTE. 30N AT STE. GENEVIEVE CO. LINE EAST TO RTE. 61
ABOUT 10.0 MILES S. OF ST. MARYS
PROJECT NO. 9-152(10) (SW) STA. 20+41.5

PERRY

COUNTY

N-62

Assembled Nov. 1955 by H.G.M. & W.G.S.
Checked Dec. 1955 by C.S.A.

Note: This drawing is not to scale. Refer dimensions.

Spec. No. 3A of 3

FINAL PLANS

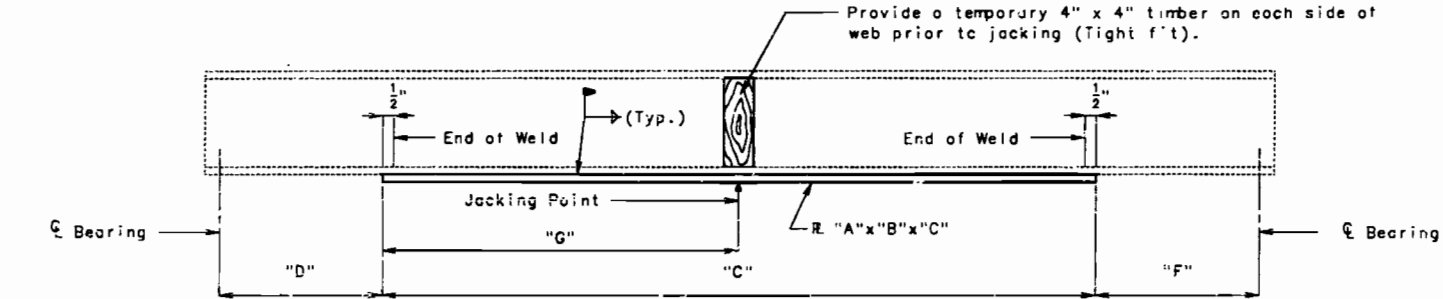
2 Col. Int. 20' or 22'
Square & Skewed H.O.

MISSOURI HIGHWAY AND TRANSPORTATION COMMISSION

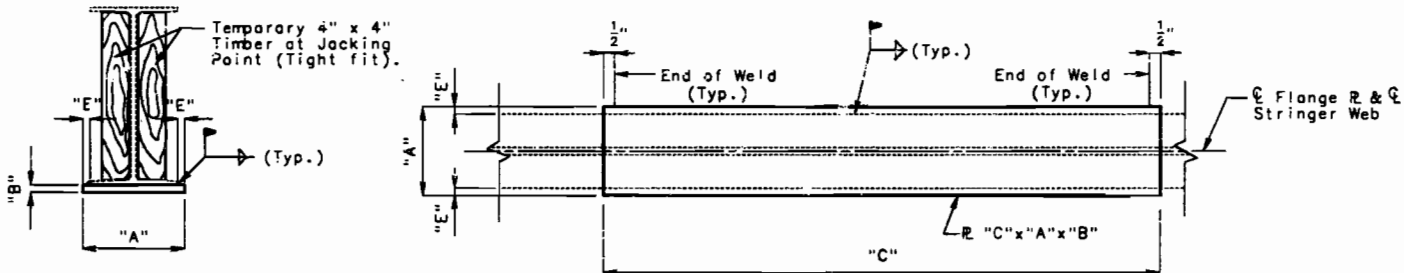
STATE	PROJ. NO.	SHEET NO.
MO.	JOS0527	4
SEC/SUR 3015	TWP 36N	RGE 10E

General Notes:

- Design Specifications:
A.A.S.H.T.O. 1992
- Design Loading:
1993 Missouri Posting Loads. (H20 & TS2)
No Future Wearing Surface
- Design Unit Stresses:
Structural Carbon Steel $f_y=36,000$ psi. (New Steel)
Existing Steel $f_y=33,000$ psi.
Working stress Design based on 68% f_y . (Exis't.)
- Paint:
Calcium Su fonate (2 coats)(See Special Provisions).
- Old and New Work:
Outline of old work is indicated by light dashed lines.
Heavy lines indicate new work.
- Dimensions:
Longitudinal dimensions are based on the original design plans.
- Traffic:
Maintain one lane of traffic during construction. (See Roadway Traffic Control Plans).
- Stringer Support:
All existing stringers in the span being strengthened shall be raised simultaneously * at jacking point and supported during welding of new steel plates.
The temporary supports must be capable of safely supporting a service load of approximately ** tons per stringer. (Factor of safety not included) (See Special Provisions).



TYPICAL ELEVATION OF STRINGER
SPAN (1-2) (2-3) (3-4) & (4-5)



SECTION THRU STRINGER

DETAIL OF FLANGE R

ESTIMATED QUANTITIES		
ITEM	Lump Sum	TOTAL
Strengthening Existing Stringers		1

Stringer Location		Dimensions							
		"A"	"B"	"C"	"D"	"E"	"F"	"G"	"H"
Exterior	Span(1-2)	11"	1"	17'-9"	13'-1"	1'- $\frac{3}{16}$ "	13'-1"	8'-10 $\frac{1}{2}$ "	29
Interior	Span(1-2)	11"	1"	17'-9"	13'-1"	1'- $\frac{3}{16}$ "	13'-1"	8'-10 $\frac{1}{2}$ "	32
Exterior	Span(2-3)	11"	1"	17'-9"	12'-1 $\frac{7}{8}$ "	1'- $\frac{3}{16}$ "	12'-11 $\frac{7}{8}$ "	8'-10 $\frac{1}{2}$ "	29
Interior	Span(2-3)	11"	1"	17'-9"	12'-11 $\frac{7}{8}$ "	1'- $\frac{3}{16}$ "	12'-11 $\frac{7}{8}$ "	8'-10 $\frac{1}{2}$ "	32
Exterior	Span(3-4)	13"	1"	27'-3"	20'-8 $\frac{11}{16}$ "	1'- $\frac{3}{16}$ "	20'-8 $\frac{11}{16}$ "	13'-7 $\frac{1}{2}$ "	39
Interior	Span(3-4)	13"	1"	27'-3"	20'-8 $\frac{11}{16}$ "	1'- $\frac{3}{16}$ "	20'-8 $\frac{11}{16}$ "	13'-7 $\frac{1}{2}$ "	42
Exterior	Span(4-5)	11"	1"	17'-9"	12'-11 $\frac{5}{16}$ "	1'- $\frac{3}{16}$ "	12'-11 $\frac{5}{16}$ "	8'-10 $\frac{1}{2}$ "	29
Interior	Span(4-5)	11"	1"	17'-9"	12'-11 $\frac{5}{16}$ "	1'- $\frac{3}{16}$ "	12'-11 $\frac{5}{16}$ "	8'-10 $\frac{1}{2}$ "	32

DESIGNED: OCT. 1993
DETAILED: NOV. 1993
CHECKED: NOV. 1993

NOTE: THIS DRAWING IS NOT TO SCALE. FOLLOW DIMENSIONS.

SHEET NO. 1 OF 1

DATE 1 / 11 / 94

REPAIRS TO BRIDGE OVER SALINE CREEK (SO. FORK)
STATE ROAD FROM RTE. 61 WEST TO ST. GENEVIEVE CO. LINE
ABOUT 4.4 MILES WEST OF RTE. 61


PROJECT NO. JOS0527 STA. 20+40


JOB NO. JOS0527 RTE. NN

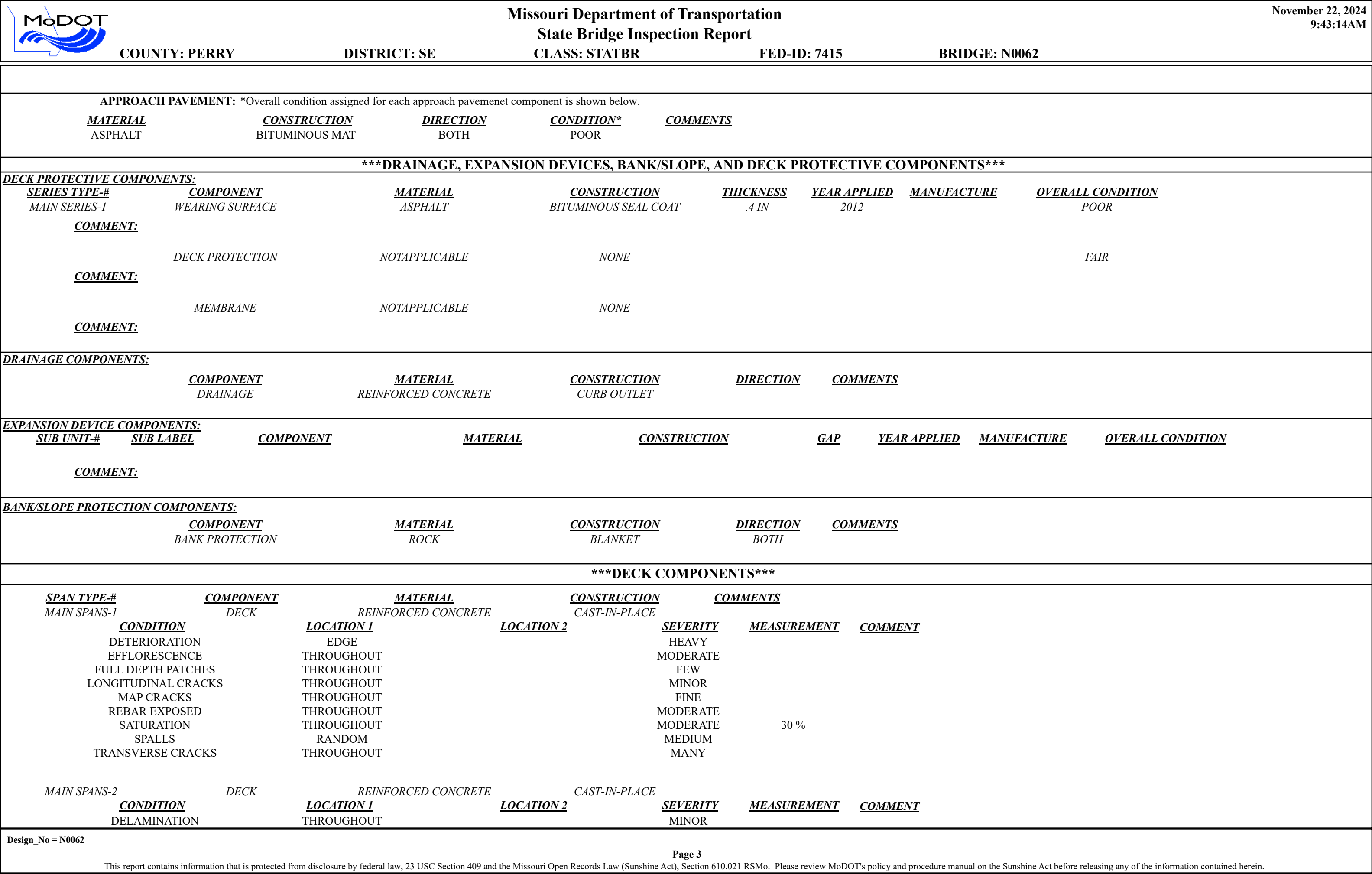
PERRY COUNTY

STD.
STD.
N00621

WID 5', FLA. 1, 1, A
FLANGE BRACE
AUG. 1993
DESIGNED: OCT. 1993
DETAILED: NOV. 1993
CHECKED: NOV. 1993

		Missouri Department of Transportation				November 22, 2024	
		State Bridge Inspection Report				9:43:14AM	
COUNTY: PERRY		DISTRICT: SE		CLASS: STATBR		FED-ID: 7415	
						BRIDGE: N0062	
GENERAL STRUCTURE INFORMATION						***BRIDGE INSPECTION INFORMATION***	
<div>ROUTE: RTNNE</div> <div>FEATURE: SALINE CR</div> <div>STATUS: P-POSTLOAD</div> <div>LOG MILE: 1.487</div> <div>DETOUR: 16.00 MILES</div> <div>NHS: NO</div> <div>BUILT: 1956</div> <div>REHAB: 1994</div> <div>LOCATION: S 3015 T 36 R 10 E</div> <div>LATITUDE: 37 48 17.38 (DMS)</div> <div>LONGITUDE: 90 0 13.51 (DMS)</div>		<div># SPANS: 4</div> <div>LANES ON: 2</div> <div>LANES UNDER: 0</div> <div>COMPASS DIRECTION: WEST to EAST</div> <div>DIRECTION OF TRAFFIC: 2-WAY TRAF</div> <div>FUNCTIONAL CLASS: RL-MINOR COLLECTOR</div> <div>NBI OWNER: MODOT</div> <div>NBI MAINTAINED: MODOT</div> <div>MAINTENANCE DISTRICT: SE</div> <div>MAINTENANCE COUNTY: PERRY</div> <div>SUB AREA: 7H36</div>		<div>PLACE CODE: 65360 SALINE</div> <div>LENGTH: 208 FT 0 IN</div> <div>MAXIMUM SPAN: 69 FT 11 IN</div> <div>APPROACH ROADWAY: 22 FT 0 IN</div> <div>CURB TO CURB: 20 FT 0 IN</div> <div>OUT TO OUT: 22 FT 4 IN</div> <div>AADT: 364</div> <div>AADT YEAR: 2023</div> <div>AADT TRUCK: 14.6%</div> <div>FUTURE AADT: 510</div> <div>FUTURE AADT YEAR: 2043</div>		<div>DATE: 10/01/2024</div> <div>RESPONSIBILITY: DISTRICT</div> <div>FREQUENCY: 12</div> <div>CALCULATED INTERVAL**: 12</div> <div>TEAM LEADER: MELANIE RICKARD-ELMOI</div> <div>ELEMENT: NO</div> <div>INSPECTOR 2:</div> <div>INSPECTOR 4:</div> <div>INSPECTOR 3:</div> <div>** When calculated interval exceeds the frequency, a justification comment per BIRM is required.</div>	
						GENERAL INSPECTION COMMENTS	
FRACTURE CRITICAL INSPECTION INFORMATION				***INDEPTH INSPECTION INFORMATION***			
<div>DATE:</div> <div>FREQUENCY:</div> <div>TEAM LEADER:</div> <div>INSPECTOR 2:</div> <div>RESPONSIBILITY:</div> <div>CALCULATED INTERVAL**:</div> <div>INSPECTOR 3:</div> <div>INSPECTOR 4:</div> <div>CATEGORY:</div> <div>NBI:</div> <div>METHOD:</div> <div>** When calculated interval exceeds the frequency, a justification comment per BIRM is required.</div>				<div>DATE:</div> <div>FREQUENCY:</div> <div>TEAM LEADER:</div> <div>INSPECTOR 2:</div> <div>RESPONSIBILITY:</div> <div>CALCULATED INTERVAL**:</div> <div>INSPECTOR 3:</div> <div>INSPECTOR 4:</div> <div>CATEGORY:</div> <div>NBI:</div> <div>METHOD:</div> <div>** When calculated interval exceeds the frequency, a justification comment per BIRM is required.</div>			
FRACTURE CRITICAL INSPECTION COMMENTS				INDEPTH INSPECTION COMMENTS			
SPECIAL INSPECTION INFORMATION				***UNDERWATER INSPECTION INFORMATION***			
<div>DATE: 01/24/2022</div> <div>FREQUENCY: 999</div> <div>TEAM LEADER: CHAD DANIEL</div> <div>INSPECTOR 2: JESSE ELSEMAN</div> <div>RESPONSIBILITY: BRIDGEDIV</div> <div>CALCULATED INTERVAL**:</div> <div>INSPECTOR 3:</div> <div>INSPECTOR 4:</div> <div>CATEGORY: QUALITY ASSURANCE</div> <div>NBI: NO</div> <div>METHOD: VISUAL</div> <div>** When calculated interval exceeds the frequency, a justification comment per BIRM is required.</div>				<div>DATE: 10/01/2024</div> <div>FREQUENCY: 60</div> <div>TEAM LEADER: MELANIE RICKARD-ELMOI</div> <div>INSPECTOR 2:</div> <div>RESPONSIBILITY: DISTRICT</div> <div>CALCULATED INTERVAL**:</div> <div>INSPECTOR 3:</div> <div>INSPECTOR 4:</div> <div>CATEGORY: DRY</div> <div>NBI: NO</div> <div>METHOD: VISUAL</div> <div>** When calculated interval exceeds the frequency, a justification comment per BIRM is required.</div>			
SPECIAL INSPECTION COMMENTS				UNDERWATER INSPECTION COMMENTS			
OTHER SPECIAL INSPECTIONS				OTHER UNDERWATER INSPECTIONS			
<div>DATE</div>	<div>FREQUENCY</div>	<div>CATEGORY</div>	<div>NBI</div>	<div>CALCULATED INTERVAL</div>	<div>RESPONSIBILITY</div>	<div>METHOD</div>	<div>DATE</div>
06/18/2019	120	CHANNEL CROSS SECTIONS	NO	70	DISTRICT	WT TAPE	
05/10/2017	999	DAMAGE POST INCIDENT	NO		DISTRICT		
Design_No = N0062							
Page 1							
This report contains information that is protected from disclosure by federal law, 23 USC Section 409 and the Missouri Open Records Law (Sunshine Act), Section 610.021 RSMo. Please review MoDOT's policy and procedure manual on the Sunshine Act before releasing any of the information contained herein.							

		Missouri Department of Transportation			November 22, 2024	
		State Bridge Inspection Report			9:43:14AM	
COUNTY: PERRY		DISTRICT: SE		CLASS: STATBR	FED-ID: 7415	BRIDGE: N0062
STRUCTURE POSTING						
APPROVED CATEGORY: S-7		TRUCKS OVER 21 TONS 15 MPH ON BRIDGE.				
Ton 1: 21		Ton 2:		Ton 3:		
COMMENTS:						
FIELD CATEGORY: S-7		TRUCKS OVER 21 TONS 15 MPH ON BRIDGE.				
Ton 1: 21		Ton 2:		Ton 3:		PROBLEM:
COMMENTS:		PROBLEM DIRECTION:				
GENERAL COMMENTS/MAJOR RATED ITEMS						
GENERAL COMMENTS: (BOWDEJ1, 04/09/2008)--(46'-45'-69'-46') SMP WF GDR SPAN - (STRGTHEN ALL GRDRS ON BR '94)						
[ITEM 58] DECK: 4-POOR CONDITION		COMMENTS: (DENNIB1, 10/17/2013)--PATCHES & T-CRACKS				
RATING : 10/09/2019		(WILSOT2, 10/18/2017)--MOD DELAMN THROUT				
		(CROCKC1, 11/05/2020)--MEDIUM SATURATION THROUGHOUT				
[ITEM 59] SUPER: 5-FAIR CONDITION		COMMENTS: (SIMPSB, 10/08/2005)--GIRDERS STRENGTHENED				
RATING : 02/01/2022		(STEGEC, 02/01/2022)--RUSTING THRU OUT WITH MED SECT LOSS TO TOP FLANGES OF EXT GIRDERS				
[ITEM 60] SUB: 4-POOR CONDITION		COMMENTS: (WILSOT2, 10/18/2017)--INT SEC LOSS TOP FLANGE				
RATING : 10/27/2022		(ROBINC3, 10/29/2018)--LARGE SPALL ON BENT 4 SOUTH COLUMN				
		(STEGEC, 02/01/2022)--ADVANCED SECT LOSS ON CENTER 2 PILE AT BENT 2				
[ITEM 61] BANK/CHANNEL: 6-WIDESPREAD MINOR DAMAGE		COMMENTS: (STEGEC, 02/01/2022)--CHANNEL DEEPENING WITH MINOR LOCAL SCOUR AT BENT 3				
RATING : 02/01/2022						
[ITEM 113] SCOUR: 8-STABLE FOR CALCULATED		COMMENTS: (WILSOT2, 10/18/2017)--STABLE				
RATING : 05/18/2001						
EVALUATION TYPE :						
[ITEM 71] WATERWAY ADEQUACY: DECK ABOVE FLOOD ELEV		COMMENTS:				
RATING : 05/18/2001						
[ITEM 72] APPRRDWY ALIGNMENT: 5 - FAIR		COMMENTS: (ELSEMJ, 01/23/2012)--UNEVEN @ ABUT 5				
RATING : 01/23/2012						
RAILING AND APPROACH PAVEMENT COMPONENTS AND RATINGS						
[ITEM 36A] BRIDGE RAILING RATING: DOESNT MEET CURRNT STND-0		RATING : 02/23/2004		COMMENTS:		
<u>MATERIAL</u>	<u>CONSTRUCTION</u>	<u>DIRECTION</u>	<u>COMMENTS</u>			
REINFORCED CONCRETE	CURB	BOTH				
STEEL	ANGLE-DOUBLE	BOTH				
[ITEM 36B] TRANSITION RAILING RATING: NOT PROVIDED-0		RATING : 05/18/2001		COMMENTS:		
[ITEM 36C] APPROACH RAILING RATING: NOT PROVIDED-0		RATING : 05/18/2001		COMMENTS:		
[ITEM 36D] RAIL END TREATMENT RATING: NOT PROVIDED-0		RATING : 05/18/2001		COMMENTS:		
Design_No = N0062						
Page 2						
This report contains information that is protected from disclosure by federal law, 23 USC Section 409 and the Missouri Open Records Law (Sunshine Act), Section 610.021 RSMo. Please review MoDOT's policy and procedure manual on the Sunshine Act before releasing any of the information contained herein.						





Missouri Department of Transportation

State Bridge Inspection Report

November 22, 2024
9:43:14AM

COUNTY: PERRY

DISTRICT: SE

CLASS: STATBR

FED-ID: 7415

BRIDGE: N0062

DETERIORATION	EDGE	SEVERE			
EFFLORESCENCE	THROUGHOUT	MINOR			
MAP CRACKS	THROUGHOUT	MANY			
REBAR EXPOSED	THROUGHOUT	MINOR			
SATURATION	RANDOM	MINOR	50 %		
SPALLS	RANDOM	MEDIUM			
TRANSVERSE CRACKS	THROUGHOUT	MEDIUM			
MAIN SPANS-3	DECK	REINFORCED CONCRETE	CAST-IN-PLACE		
<u>CONDITION</u>	<u>LOCATION 1</u>	<u>LOCATION 2</u>	<u>SEVERITY</u>	<u>MEASUREMENT</u>	<u>COMMENT</u>
DELAMINATION	RANDOM		MINOR		
DETERIORATION	EDGE		HEAVY		
EFFLORESCENCE	THROUGHOUT		MINOR		
REBAR EXPOSED	THROUGHOUT		MANY		
SATURATION	THROUGHOUT		MINOR	20 %	
SPALLS	RANDOM		MEDIUM		
TRANSVERSE CRACKS	THROUGHOUT		MANY		
MAIN SPANS-4	DECK	REINFORCED CONCRETE	CAST-IN-PLACE		
<u>CONDITION</u>	<u>LOCATION 1</u>	<u>LOCATION 2</u>	<u>SEVERITY</u>	<u>MEASUREMENT</u>	<u>COMMENT</u>
DELAMINATION	RANDOM		MINOR		(BLALOR1, 03/13/2014)--& SPALLS (@ JOINT AREA @ ABUT 4)
DETERIORATION	EDGE		MODERATE		
EFFLORESCENCE	RANDOM		MINOR		
REBAR EXPOSED	EDGE		MANY		
SATURATION	THROUGHOUT		MINOR	15 %	
SPALLS	RANDOM		MEDIUM		
TRANSVERSE CRACKS	THROUGHOUT		MEDIUM		

SUPERSTRUCTURE COMPONENTS

<u>SERIES TYPE-#</u>	<u>SPAN TYPE</u>	<u>MATERIAL</u>	<u>CONSTRUCTION</u>	<u>LABEL</u>	<u>COMMENTS</u>
MAIN SERIES-1	SIMPLE SPAN	STEEL	WIDE FLANGE GIRDERS		(STEGEC, 05/03/2004)--DECK BOLTED DOWN IN 4-2004 (BLALOR1, 03/13/2014)--MED DLD
<u>SPAN</u>	<u>COMPOSITE INDICATOR</u>	<u>LENGTH</u>	<u>WEATHERING STEEL</u>	<u>COMMENTS</u>	
MAIN SPANS-1	NON-COMPOSITE	46 FT 3 IN	NO		
<u>CONDITION</u>	<u>LOCATION 1</u>	<u>LOCATION 2</u>	<u>SEVERITY</u>	<u>MEASUREMENT</u>	<u>COMMENT</u>
DECK LIFTING	THROUGHOUT		MODERATE		(BLALOR1, 03/13/2014)--& HEAVY @ JNTS @ BT 2
PACK RUST	THROUGHOUT		MINOR		
RUSTING	BOTTOM FLANGE		MINOR		
SECTION LOSS	TOP FLANGE		INITIAL		
MAIN SPANS-2	NON-COMPOSITE	45 FT 1 IN	NO	(BLALOR1, 03/13/2014)--MED DLD	
<u>CONDITION</u>	<u>LOCATION 1</u>	<u>LOCATION 2</u>	<u>SEVERITY</u>	<u>MEASUREMENT</u>	<u>COMMENT</u>
DECK LIFTING	THROUGHOUT		MODERATE		
OTHER	AT JOINTS		NOT APPLICABLE		
OTHER	GIRDERS		NOT APPLICABLE		(BLALOR1, 03/13/2014)--GDRS 2 & 3: MED SMOKE DAMAGE @ ABUT 1
PACK RUST	AT JOINTS		MODERATE		
RUSTING	BOTTOM FLANGE		MINOR		
SECTION LOSS	TOP FLANGE		MODERATE		(BLALOR1, 03/13/2014)--@ JNT AREAS
MAIN SPANS-3	NON-COMPOSITE	69 FT 11 IN	NO	(BLALOR1, 03/13/2014)--MED DLD	

Design_No = N0062

This report contains information that is protected from disclosure by federal law, 25 USC Section 409 and the Missouri Open Records Law (Sunshine Act), Section 610.021 RSMo. Please review MoDOT's policy and procedure manual on the Sunshine Act before releasing any of the information contained herein.



Missouri Department of Transportation

State Bridge Inspection Report

November 22, 2024
9:43:14AM

COUNTY: PERRY

DISTRICT: SE

CLASS: STATBR


FED-ID: 7415


BRIDGE: N0062

<u>CONDITION</u>		<u>LOCATION 1</u>	<u>LOCATION 2</u>	<u>SEVERITY</u>	<u>MEASUREMENT</u>	<u>COMMENT</u>
DECK LIFTING		THROUGHOUT		MODERATE		(BLALOR1, 03/13/2014)--@ JNT AREAS
OTHER		AT JOINTS		NOT APPLICABLE		
PACK RUST		AT JOINTS		MEDIUM		(BLALOR1, 03/13/2014)--ALL GIRDERS
RUSTING		BOTTOM FLANGE		MINOR		
RUSTING		TOP FLANGE		MINOR		(ROBINC3, 10/27/2015)--EXTERIOR GIRDERS
SECTION LOSS		TOP FLANGE		MEDIUM		(BLALOR1, 03/13/2014)--OUTSIDE GIRDERS
MAIN SPANS-4	NON-COMPOSITE	46 FT 3 IN	NO	(BLALOR1, 03/13/2014)--MED DLD		
<u>CONDITION</u>		<u>LOCATION 1</u>	<u>LOCATION 2</u>	<u>SEVERITY</u>	<u>MEASUREMENT</u>	<u>COMMENT</u>
DECK LIFTING		AT JOINTS		MODERATE		
OTHER		AT JOINTS		NOT APPLICABLE		
PACK RUST		AT JOINTS		MEDIUM		
PACK RUST		DIAPHRAGMS		MINOR		(BLALOR1, 03/13/2014)--& SECTION LOSS @ BT 4
PACK RUST		GIRDERS		MEDIUM		(BLALOR1, 03/13/2014)--@ JOINT AREA BT 4
SECTION LOSS		TOP FLANGE		INITIAL		

SUBSTRUCTURE COMPONENTS

<u>SUBSTRUCTURE</u>	<u>SKEW</u>	<u>LENGTH</u>	<u>MATERIAL</u>	<u>CONSTRUCTION</u>	<u>LABEL</u>	<u>COMMENTS</u>
ABUTMENT-1	LA-20 DEGREES	24 FT 8 IN	REINFORCED CONCRETE	NON-INTEGRAL		
	<u>CONDITION</u>		<u>LOCATION 1</u>	<u>LOCATION 2</u>	<u>SEVERITY</u>	<u>MEASUREMENT</u> <u>COMMENT</u>
<u>ASSOCIATED COMPONENT</u>			<u>MATERIAL</u>	<u>CONSTRUCTION</u>		
BACKWALL			REINFORCED CONCRETE	CAST-IN-PLACE		
	<u>CONDITION</u>		<u>LOCATION 1</u>	<u>LOCATION 2</u>	<u>SEVERITY</u>	<u>MEASUREMENT</u> <u>COMMENT</u>
	DELAMINATION		THROUGHOUT		MINOR	
	HORIZONTAL CRACKS		THROUGHOUT		FEW	
	SHOVING		THROUGHOUT		MODERATE	
BEAM CAP			REINFORCED CONCRETE	CAST-IN-PLACE		
	<u>CONDITION</u>		<u>LOCATION 1</u>	<u>LOCATION 2</u>	<u>SEVERITY</u>	<u>MEASUREMENT</u> <u>COMMENT</u>
	DELAMINATION		THROUGHOUT		MINOR	
	EROSION		GROUND LINE		PILE EXPOSED	
	REBAR EXPOSED		THROUGHOUT		MINOR	
	SEALED		BEAM CAP		ASPHALTICBASE	
	SPALLS		THROUGHOUT		MINOR	
PILING			STEEL	H-SHAPE		
	<u>CONDITION</u>		<u>LOCATION 1</u>	<u>LOCATION 2</u>	<u>SEVERITY</u>	<u>MEASUREMENT</u> <u>COMMENT</u>
	EXPOSED		INTERIOR PILING		PARTIAL	(STEGEC, 02/01/2022)--CENTER PILE EXPOSED BEHIND STACKED LOOSE ROCK
STRAIGHT WINGS			REINFORCED CONCRETE	CAST-IN-PLACE		
	<u>CONDITION</u>		<u>LOCATION 1</u>	<u>LOCATION 2</u>	<u>SEVERITY</u>	<u>MEASUREMENT</u> <u>COMMENT</u>
	UNDERMINING		THROUGHOUT		MINOR	(ROBINC3, 11/30/2018)--SW WING
FIXED BEARING			STEEL	CURVED PLATE(ROTATING		
	<u>CONDITION</u>		<u>LOCATION 1</u>	<u>LOCATION 2</u>	<u>SEVERITY</u>	<u>MEASUREMENT</u> <u>COMMENT</u>
	RUSTING		THROUGHOUT		MINOR	
BENT-2	LA-20 DEGREES	22 FT 8 IN	REINFORCED CONCRETE	PILE CAP		
	<u>CONDITION</u>		<u>LOCATION 1</u>	<u>LOCATION 2</u>	<u>SEVERITY</u>	<u>MEASUREMENT</u> <u>COMMENT</u>
<u>ASSOCIATED COMPONENT</u>			<u>MATERIAL</u>	<u>CONSTRUCTION</u>		
BEAM CAP			REINFORCED CONCRETE	CAST-IN-PLACE		
	<u>CONDITION</u>		<u>LOCATION 1</u>	<u>LOCATION 2</u>	<u>SEVERITY</u>	<u>MEASUREMENT</u> <u>COMMENT</u>
	DELAMINATION		THROUGHOUT		MODERATE	
	HORIZONTAL CRACKS		RANDOM		FINE	
	REBAR EXPOSED		THROUGHOUT		MINOR	

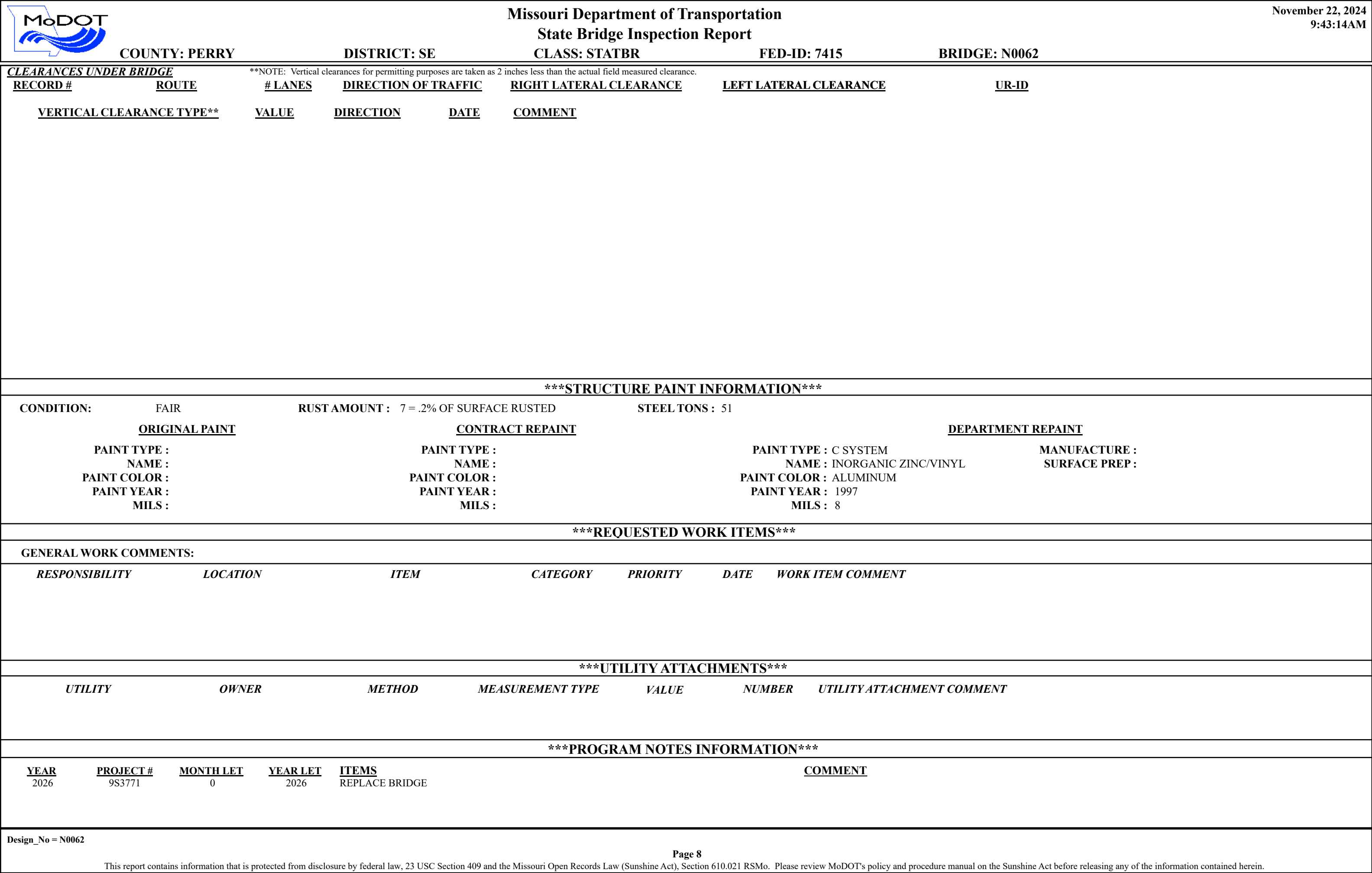
		<div> <div>Missouri Department of Transportation</div> <div>State Bridge Inspection Report</div> </div>					<div> <div>November 22, 2024</div> <div>9:43:14AM</div> </div>	
COUNTY: PERRY		DISTRICT: SE		CLASS: STATBR		FED-ID: 7415		BRIDGE: N0062
PILING	SEALED SPALLS	STEEL	BEAM CAP THROUGHOUT	H-SHAPE	ASPHALTICBASE MINOR			
	<u>CONDITION</u>		<u>LOCATION 1</u>		<u>SEVERITY</u>	<u>MEASUREMENT</u>		
	RUSTING SECTION LOSS		RANDOM AT BEAM CAP		SEVERE ADVANCED			
CROSS BRACING	<u>CONDITION</u>	STEEL	<u>LOCATION 1</u>	ANGLE	<u>SEVERITY</u>	<u>MEASUREMENT</u>	<u>COMMENT</u>	
FIXED BEARING	<u>CONDITION</u>	STEEL	<u>LOCATION 1</u>	CURVED PLATE(ROTATING	<u>SEVERITY</u>	<u>MEASUREMENT</u>	<u>COMMENT</u>	
	PACK RUST		RANDOM		MINOR			
BENT-3	LA-20 DEGREES	22 FT 10 IN	REINFORCED CONCRETE	MULTIPLE COLUMN				
	<u>CONDITION</u>		<u>LOCATION 1</u>		<u>SEVERITY</u>	<u>MEASUREMENT</u>		
	<u>ASSOCIATED COMPONENT</u>	<u>MATERIAL</u>	<u>CONSTRUCTION</u>					
BEAM CAP	<u>CONDITION</u>	REINFORCED CONCRETE	<u>LOCATION 1</u>	CAST-IN-PLACE	<u>SEVERITY</u>	<u>MEASUREMENT</u>	<u>COMMENT</u>	
	DELAMINATION	THROUGHOUT			MODERATE			
	EFFLORESCENCE	THROUGHOUT			MINOR			
	HORIZONTAL CRACKS	RANDOM			MANY			
	REBAR EXPOSED	THROUGHOUT			MINOR			
	SCALING	THROUGHOUT			HEAVY			
	SEALED SPALLS	BEAM CAP			ASPHALTICBASE			
COLUMN	<u>CONDITION</u>	REINFORCED CONCRETE	<u>LOCATION 1</u>	CAST-IN-PLACE	<u>SEVERITY</u>	<u>MEASUREMENT</u>	<u>COMMENT</u>	
	DELAMINATION	THROUGHOUT		<u>LOCATION 2</u>	MODERATE			
	REBAR EXPOSED	THROUGHOUT			MINOR			
	SCALING	RANDOM			MINOR			
	VERTICAL CRACKS	RANDOM			MINOR			
FOOTING	<u>CONDITION</u>	REINFORCED CONCRETE	<u>LOCATION 1</u>	SPREAD	<u>SEVERITY</u>	<u>MEASUREMENT</u>	<u>COMMENT</u>	
TIE BEAM	<u>CONDITION</u>	REINFORCED CONCRETE	<u>LOCATION 1</u>	CAST-IN-PLACE	<u>SEVERITY</u>	<u>MEASUREMENT</u>	<u>COMMENT</u>	
FIXED BEARING	<u>CONDITION</u>	STEEL	<u>LOCATION 1</u>	CURVED PLATE(ROTATING	<u>SEVERITY</u>	<u>MEASUREMENT</u>	<u>COMMENT</u>	
	PACK RUST		RANDOM		MINOR			
BENT-4	LA-20 DEGREES	22 FT 10 IN	REINFORCED CONCRETE	MULTIPLE COLUMN				
	<u>CONDITION</u>		<u>LOCATION 1</u>		<u>SEVERITY</u>	<u>MEASUREMENT</u>		
	<u>ASSOCIATED COMPONENT</u>	<u>MATERIAL</u>	<u>CONSTRUCTION</u>					
BEAM CAP	<u>CONDITION</u>	REINFORCED CONCRETE	<u>LOCATION 1</u>	CAST-IN-PLACE	<u>SEVERITY</u>	<u>MEASUREMENT</u>	<u>COMMENT</u>	
	DELAMINATION	THROUGHOUT		<u>LOCATION 2</u>	MEDIUM			
	HAIR LINE CRACKING	AT BEAM CAP			FEW			(BLALOR1, 03/13/2014)--TOP & BOTTOM OF FACE CAP
	OTHER	BEAM CAP			NOT APPLICABLE			(ROBINC3, 11/17/2015)--MINOR LONG CRACKS ON BOTTOM OF BEAM CAPS
	SEALED SPALLS	BEAM CAP			ASPHALTICBASE			
COLUMN	<u>CONDITION</u>	REINFORCED CONCRETE	<u>LOCATION 1</u>	CAST-IN-PLACE	<u>SEVERITY</u>	<u>MEASUREMENT</u>	<u>COMMENT</u>	
				<u>LOCATION 2</u>	MINOR			


		Missouri Department of Transportation					November 22, 2024				
		State Bridge Inspection Report					9:43:14AM				
COUNTY: PERRY		DISTRICT: SE		CLASS: STATBR		FED-ID: 7415		BRIDGE: N0062			
FOOTING	DELAMINATION	THROUGHOUT		LARGE		(BLALOR1, 03/13/2014)--ON SOUTH COLUMN					
	REBAR EXPOSED	COLUMN		MODERATE		(ROBINC3, 11/30/2018)--S. COLUMN 3' X 3' AREA					
	SPALLS	THROUGHOUT		SEVERE							
	VERTICAL CRACKS	RANDOM		LARGE		(BLALOR1, 03/13/2014)--OPEN V CRK ON WEST SIDE OF SOUTH COLUMN					
		REINFORCED CONCRETE		SPREAD							
				<u>LOCATION 2</u>		<u>SEVERITY</u>		<u>MEASUREMENT</u>		<u>COMMENT</u>	
FIXED BEARING		STEEL		CURVED PLATE(ROTATING							
				<u>LOCATION 2</u>		<u>SEVERITY</u>		<u>MEASUREMENT</u>		<u>COMMENT</u>	
	PACK RUST	RANDOM				MEDIUM		(BLALOR1, 03/13/2014)--OF BRGS @ SP 3 & 4			
ABUTMENT-5	LA-20 DEGREES	24 FT 8 IN	REINFORCED CONCRETE	OPEN CONCRETE							
				<u>LOCATION 2</u>		<u>SEVERITY</u>		<u>MEASUREMENT</u>		<u>COMMENT</u>	
<u>ASSOCIATED COMPONENT</u>		<u>MATERIAL</u>		<u>CONSTRUCTION</u>							
BACKWALL		REINFORCED CONCRETE		CAST-IN-PLACE							
				<u>LOCATION 2</u>		<u>SEVERITY</u>		<u>MEASUREMENT</u>		<u>COMMENT</u>	
BEAM CAP	SHOVING	THROUGHOUT				MINOR					
		REINFORCED CONCRETE		CAST-IN-PLACE							
				<u>LOCATION 2</u>		<u>SEVERITY</u>		<u>MEASUREMENT</u>		<u>COMMENT</u>	
	DELAMINATION	RANDOM				MODERATE					
	HORIZONTAL CRACKS	RANDOM				FINE					
	SEALED	BEAM CAP				ASPHALTICBASE					
STRAIGHT WINGS	SPALLS	RANDOM				MINOR				(ROBINC3, 10/27/2015)--W/ EXPOSED REBAR	
		REINFORCED CONCRETE		CAST-IN-PLACE							
COLUMN				<u>LOCATION 2</u>		<u>SEVERITY</u>		<u>MEASUREMENT</u>		<u>COMMENT</u>	
		REINFORCED CONCRETE		CAST-IN-PLACE							
FOOTING				<u>LOCATION 2</u>		<u>SEVERITY</u>		<u>MEASUREMENT</u>		<u>COMMENT</u>	
		REINFORCED CONCRETE		SPREAD							
FIXED BEARING				<u>LOCATION 2</u>		<u>SEVERITY</u>		<u>MEASUREMENT</u>		<u>COMMENT</u>	
		STEEL		CURVED PLATE(ROTATING							
				<u>LOCATION 2</u>		<u>SEVERITY</u>		<u>MEASUREMENT</u>		<u>COMMENT</u>	
		RUSTING		THROUGHOUT		LIGHT					
OVER/UNDER ROUTES CLEARANCE INFORMATION											
<u>CLEARANCES OVER DECK</u>											
**NOTE: Vertical clearances for permitting purposes are taken as 2 inches less than the actual field measured clearance.											
<u>VERTICAL CLEARANCE TYPE**</u>		<u>VALUE</u>	<u>DIRECTION</u>	<u>DATE</u>	<u>COMMENT</u>						

Design_No = N0062

Page 7

This report contains information that is protected from disclosure by federal law, 23 USC Section 409 and the Missouri Open Records Law (Sunshine Act), Section 610.021 RSMo. Please review MoDOT's policy and procedure manual on the Sunshine Act before releasing any of the information contained herein.



			Missouri Department of Transportation		November 22, 2024	
			State Bridge Inspection Report		9:43:14AM	
COUNTY: PERRY			DISTRICT: SE		CLASS: STATBR	
			FED-ID: 7415		BRIDGE: N0062	
COMPUTER GENERATED RATINGS AND DEFICIENCY ITEMS				***ADVANCED SIGN INFORMATION***		
NOTE: The items listed in this section are updated whenever computer edits are ran on a structure after the inspection updates have been entered in to TMS.				SIGN #		
				SIGN TYPE		
				PROBLEM		
				PROBLEM DIRECTION		
<u>Rated Item</u>				<u>Rating</u>		
				<u>Rating Date</u>		
[Item 67] Structure Evaluation Rating:				4-MEETS MINIMUM TOLERABLE		
				12/17/2018		
[Item 68] Deck Geometry Rating:				4-MEETS MINIMUM TOLERABLE		
				3/6/2024		
[Item 69] Underclearance:				N-NOT APPLICABLE		
				5/18/2001		
Sufficiency Rating:				16.6%		
				3/6/2024		
Deficiency:				STRUCTURAL		
				10/16/2019		
Funding Eligibility:				FULL		

Estimated New Structure Length:				243 FT.		

Estimated Structure Cost:				\$1,263,357		

Estimated Total Project Cost:				\$1,895,036		

Year of Cost Estimate:				2024		

NOTE: The above structure length and cost estimates are computer generated using algorithms in the TMS system. These algorithms are generalized to use NBI items to come up with a new structure length and width to calculate a new area which is taken times a representative cost per square foot. The actual structure size and cost may vary significantly from these numbers once site specific engineering is done.						
				OUTFALL INSPECTION INFORMATION		
				# OUTFALLS:		
				INSPECTOR:		
				STATUS:		
				DATE:		
				NOTES:		



Missouri Department of Transportation
Bridge Inventory and Inspection System
Structural Inventory & Appraisal Sheet

November 22, 2024
9:44:06am

COUNTY : PERRY BRIDGE : N0062 1 REVIEW STATUS : APPROVED NBI STATUS : T
RECORD TYPE : ROUTE CARRIED 'ON' STRUCT RUN DATE : 10/4/2024 SUBMITTAL YEAR : 2024

GENERAL STRUCTURE INFORMATION			ROUTE DESIGNATION INFORMATION		
1	State	MISSOURI	5A	Record Type	ROUTE CARRIED 'ON' STRUCT
2	District	SE	5B	Route Signing Prefix	MO
3	County	PERRY	5C	Designated Level of Service	MAINLINE
8	Federal ID No.	7415	5D	Route Number	000NN
27	Year Built	1956	5E	Directional Suffix	NOT APPLICABLE
106	Year Reconstructed	1994	7	Facility Carried	RT NN E
42A	Type of Service On	HIGHWAY	12	Base Hwy. Network	NO
21	Structure Maintenance	STATE HIGHWAY AGENCY	13A	LRS Inventory Route No.	
22	Structure Owner	STATE HIGHWAY AGENCY	13B	Subroute No.	
33	Br. Median Code	NO MEDIAN	20	Toll Status	ON FREE ROAD
37	Historical Significance	NOT ELIGIBLE FOR NR OF HP	26	Functional Classification	08-RURAL MINOR COLLECTOR
101	Parallel Struc Desg	NONE EXISTS	28A	Lanes on Structure	02
103	Temporary Structure	NOT TEMPORARY	100	STRAHNET Designation	RTE NOT A DEFENSE HWY
112	NBIS Bridge Length	YES	104	National Highway System	NOT ON NHS
			105	Federal Lands Highway	NOT APPLICABLE
			110	Designated Nat. Network	NO
STRUCTURE LOCATION INFORMATION			STRUCTURE TRAFFIC INFORMATION		
4	Place	SALINE	29	AADT	364
	Code	65360	30	AADT Year	2023
9	Location	S 3015 T 36 N R 10 E	102	Direction of Traffic	2-WAY TRAFFIC
11	Milepoint	1.50 miles	109	AADT Truck Percent	15%
16	Latitude	37 D 48 M 17 S	114	Future AADT	510
17	Longitude	90 D 0 M 14 S	115	Future AADT Year	2043
UNDERRECORD INFORMATION			STRUCTURE GEOMETRIC INFORMATION		
6	Features Intersected	SALINE CR	10	Inventory Rte. Vert. Clear	99 Ft. 99 In.
42B	Type of Service Under	WATERWAY	19	By pass Detour Length	16.25 miles
28B	Lanes Under Structure	00	32	Approach Roadway Width	21 Ft. 12 In.
54A	Vert. Clearance Ref.	N/A	34	Skew	20.00 Degrees
54B	Vert. Clearance	0 Ft. 0 In.	35	Struct. Flared	NO
55A	Rt. Lat Clear Ref.	N/A	47	Total Horiz. Clear	20 Ft. 0 In.
55B	Rt. Lat Clearance	0 Ft. 0 In.	48	Maximum Span Length	69 Ft. 11 In.
56	Left Lat Clearance	0 Ft. 0 In.	49	Structure Length	208 Ft. 0 In.
38	Navigation Control	PERMIT NOT REQ	50A	Left Curb/Sidewalk Width	0 Ft. 0 In.
39	Nav Vertical Clear	0 Ft. 0 In.	50B	Right Curb/Sidewalk Width	0 Ft. 0 In.
40	Nav Horizontal Clear	0 Ft. 0 In.	51	Curb to Curb Br. Width	20 Ft. 0 In.
111	Nav. Pier Protection		52	Deck Width (Out-Out)	22 Ft. 4 In.
116	Nav. Cl. Vert. Clear		53	Vert. Clearance Over Deck	99 Ft. 99 In.

Design_No = N0062 and Inventory_Appraisal_Submittal_Year = 2024



Missouri Department of Transportation
Bridge Inventory and Inspection System
Structural Inventory & Appraisal Sheet

November 22, 2024
9:44:06am

COUNTY : PERRY BRIDGE : N0062 1 REVIEW STATUS : APPROVED NBI STATUS : T
RECORD TYPE : ROUTE CARRIED 'ON' STRUCT RUN DATE : 10/4/2024 SUBMITTAL YEAR : 2024

LOAD RATING AND POSTING INFORMATION				MATERIAL/CONSTRUCTION INFORMATION				
31	Design Load	H 10		43A	Main Struc. Mat type	STEEL		
41	Structure Status	POSTED FOR LOAD		43B	Main struc Constr. Type	STRINGER/MULTIBEAM - GRD		
63	Oper. Rating Meth.	ALLOWABLE STRESS		45	# of Main Spans	4		
64	Operating Rating	26 Tons.		44A	Appr Struc. Mat type	000		
65	Inventory Rating Meth	ALLOWABLE STRESS		44B	Appr Struc. Cnstr. type	000		
66	Inventory Rating	13 Tons.		46	# of Approach Span	0		
70	Bridge Posting Code	0.1-9.9% BELOW		107	Deck Mat/Constr.	1 CONCRETE CIP		
PROPOSED IMPROVEMENT INFORMATION				108A	Wear Surf Mat/Constr.	6 BITUMINOUS		
	Sufficiency Rating	16.6	Percent	108B	Membrane Mat/Constr.	0 NONE		
	Deficiency Rating	STRUCTURAL		108C	Deck Protect Mat/Constr.	0 NONE		
	Funding Eligibility	FULL		CONDITION RATING INFORMATION				
75A	Proposed Work	REPLACEMENT SUBSTND LOAD		58	Deck Cond. Rating	4		
75B	Work Done By	Contract		59	Superstructure Cond. Rating	5		
76	New Struc Length	242 Ft. 9 In.		60	Substructure Cond. Rating	4		
94	Struc Improve Cost	\$ 1,263,000		61	Channel /Channel Protection Cond. Rating	6		
95	Roadway Improve Cost	\$ 126,000		62	Culvert Cond. Rating	N		
96	Total Project Cost	\$ 1,895,000		INSPECTION INFORMATION				
97	Year of Cost Estimates	2024		90	Gen. Insp Date	10 / 24		
APPRAISAL RATING INFORMATION				91	Gen. Insp. Frequency	12	Months	
36A	Br. Rail App. Rating	DOES NOT MEET ACCEPT STND		92A	Frac. Critical Inspection	N	Months	
36B	Transition Rail App. Rating	DOES NOT MEET ACCEPT STND		93A	Frac. Critical Insp. Date			
36C	Approach Rail App. Rating	DOES NOT MEET ACCEPT STND		92B	Underwater Inspection	N	Months	
36D	Rail End Treat. App. Rating	DOES NOT MEET ACCEPT STND		93B	Underwater Insp. Date			
67	Struc Eval App. Rating	4		92C	Special Inspection	N	Months	
68	Deck Geometry App. Rating	4		93C	Special Inspection Date			
69	Underclearance App. Rating	N		BORDER BRIDGE INFORMATION				
71	Waterway Adeq. App. Rating	8		98	Neighboring State Code			
72	Approach Road App. Rating	5		98B	Neighboring State % Respon			
113	Scour Assess App. Rating	8		99	Neighboring State Struc. No.			
APPROVED POSTING INFORMATION				FIELD POSTING INFORMATION				
Approved Posting Category		S-7		Field Posting Category		S-7		
		Ton1	Ton2	Ton3		Ton1	Ton2	Ton3
Tonnage Values for Posting Sign		21		Tonnage Values for Posting Sign		21		
General Text for Posting Sign				General Text for Posting Sign				
TRUCKS OVER 21 TONS 15 MPH ON BRIDGE.				TRUCKS OVER 21 TONS 15 MPH ON BRIDGE.				

Design_No = N0062 and Inventory_Appraisal_Submittal_Year = 2024