



FED. ROAD DIST. NO.	STATE	FED. AID PROJ. NO.	FISCAL YEAR	SHEET NO.	TOTAL SHEET
5	NO.		19	78	



Design specifications A.A.S.H.O.-1957(As Revised)  
 Loading H15-44 (15 #sq. Ft. Future Wearing Surface)  
 Structural Steel Stress 18,000 #/sq. inch.  
 Reinforcing Steel Stress 20,000 #/sq. inch.  
 Concrete, Class B Stress 1,200 #/sq. inch.  
 Concrete, Class B1 Stress 1,600 #/sq. inch.  
 Superstructure concrete shall be Class B1.  
 Substructure concrete shall be Class B.  
 All concrete shall be air-entrained.  
 Superstructure deck to be surface sealed.  
 See special provisions.

Rivets  $\frac{3}{4}$ " ; holes  $\frac{13}{16}$  ; except where otherwise noted.

Field connections may be riveted or bolted with high strength bolts. Final pay weight for Fabricated Structural Carbon steel will be based on the use of field rivets.

Qualification of welding operators will be required.

Where Joint filler is specified on the plans it shall conform with the requirements of Section 157.2.4 of the Standard Specifications.

Steel shells for cast-in-place piles shall be painted as specified for steel piles in Section 52.4.7 of the Standard Specifications.

Permits must be obtained for all truck loads over legal length.

**Paint:** Shop, none; Field, contact surfaces of bolted field connections (except where high strength bolts are used) one coat of red lead and surfaces inaccessible after erection three coats of red lead. All other exposed surfaces first coat red lead, second coat brown, third coat aluminum. Payment for cleaning and all painting will be made under unit price bid for painting.

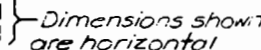
*Note: All piling shall be cast-in-place concrete piles and shall conform with details and notes on standard 52.02 except as otherwise specified. Estimated quantities shown on plans are based on the following lengths: 5 @ 40'-0" Bent No. 1; 30 @ 20'-0" Bents No. 2, 3 & 4 and 5 @ 45'-0" Bent No. 5. These indicated lengths are approximate only.*

Proper lengths to give required bearing and penetration are to be determined by the Contractor.

All piles shall be driven to the minimum penetrations noted and to not less than the specified "Plan" capacities unless excessive lengths are required to obtain "Plan" capacities in which cases the Engineer will authorize lesser capacities, but in no cases below "Computed" capacities.

All piling shall be of the (thick-shell) Trestle Type.

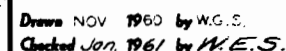
Note: Compacted roadway fill (full roadway width) shall be placed up to elevation of bottom of concrete beam in front of and not less than 25'0" in back of End Bent No. 1 & 5 before concrete piles are driven.



For location of soundings see sheet  
No. 2 of 9.  
No payment for excavation will be allowed  
for End Bents No. 1 & 5.

Note: All excavation for bridge will be paid for as Class 1 Excavation for Structures.  
Weight of Type "D" bearings is included in weight of Fabricated Structural Carbon Steel.

**Note:** This drawing is not to scale. Follow dimensions.



B.M. #37 Elev. 971.447 Bronze Tablet set in Conc.  
Monument Stamped "B.M. #37 Elev. 971.447" 40' Lt.  
Sta. 109+34.

**BRIDGE:** GENE FIELD ROAD UNDERPASS

STATE ROAD:INTERSTATE ROUTE 29

**ABOUT 5.0 MILES N.E. OF ST. JOSEPH**

PROJECT NO. I-29-2 (18X RTE. I-29) STA. 109 + 53.84

BUCHANAN

**COUNTY**

DESIGNED BY D.B. Jenkins DATE 11/29/61  
 CHECKED BY W.D. Smith DATE 11/29/61  
 APPROVED BY G.D. Carter DATE 11/29/61

STD. 52.02

STD. 54.00
------------

A-701

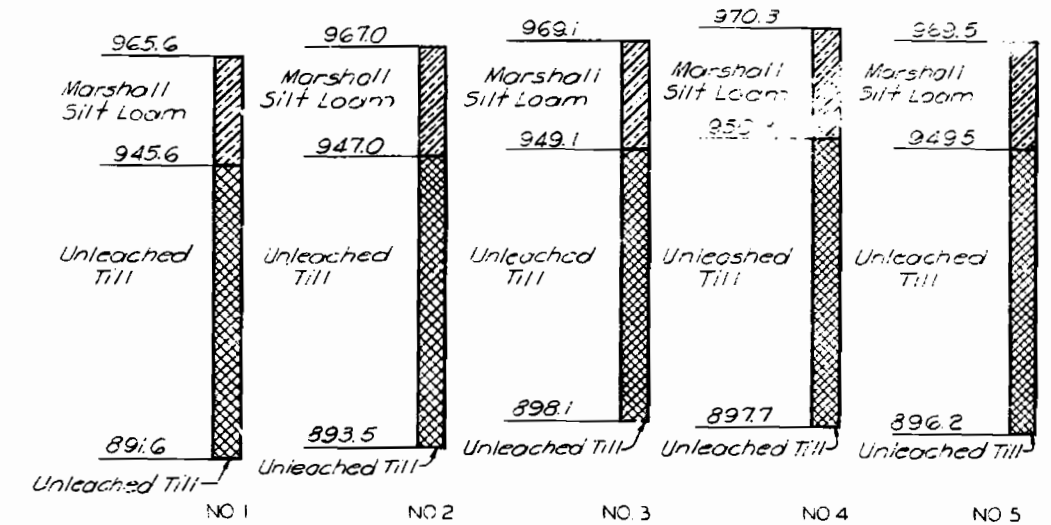
Sheet No. 1 of 9

# MISSOURI STATE HIGHWAY DEPARTMENT

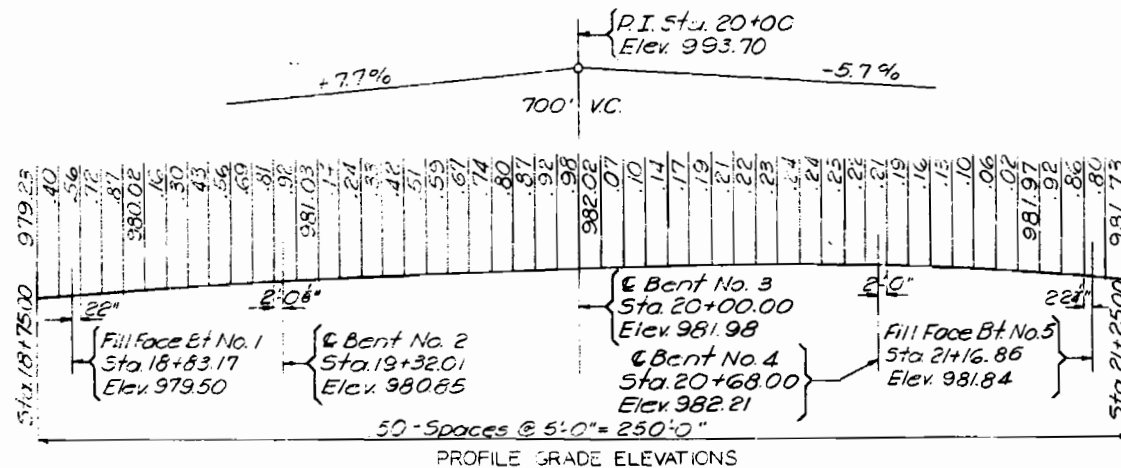
FED. ROAD DIST. NO.	STATE	FED. AID PROJ. NO.	FISCAL YEAR	SHEET NO.	TOTAL SHEET
5	MO.		19	79	

COMPLETE BILL OF REINFORCING STEEL									
No.	Size	Length	Mark	Location	No.	Size	Length	Mark	Location
END BENTS NO. 1 & 5					INT. BENT NO. 3				
16	#6	35'-0"	H1	Beam	16	#11	6'-6"	D1	Footings
4	#6	33'-0"	H2	"	12	#9	11'-3"	D2	"
8	#4	33'-0"	H3	Backwall	12	#6	8'-9"	D3	"
4	#6	29'-0"	H4	"	4	#6	10'-6"	D4	"
12	#6	8'-9"	H5	Wing					
2	#6	7'-0"	H6	"					
4	#6	5'-6"	H7	"					
					6	#8	23'-6"	G1	Beam
8	#6	13'-6"	T1	Wing	2	#6	23'-6"	G2	"
4	#6	10'-6"	T2	"	4	#11	26'-0"	G3	"
4	#6	10'-6"	T3	"	6	#10	12'-0"	G4	"
64	#4	11'-6"	U4	Beam	8	#7	6'-3"	G5	"
24	#4	3'-3"	U5	"	2	#4	577'-0"	P3	Column
					42	#5	10'-9"	U1	Beam
104	#5	5'-9"	V1	Backwall	2	#5	9'-0"	U2	"
12	#4	8'-9"	V2	Wing					
16	#5	6'-6"	V3	Backwall	16	#11	22'-3"	V6	Column
16	#2	19'-9"	W1	A.B. Well	8	#2	19'-9"	W1	A.B. Well
INT. BENTS NO. 2 & 4					Superstructure				
32	#11	6'-6"	D1	Footings	446	#5	4'-6"	C1	Parapet
24	#9	11'-3"	D2	"	462	#5	3'-6"	C2	"
24	#6	8'-9"	D3	"	8	#5	23'-0"	C3	"
8	#6	10'-6"	D4	"	30	#5	23'-9"	C4	Curb/Parapet
					8	#5	23'-6"	C5	Parapet
					12	#5	24'-3"	C6	Curb
					12	#5	25'-0"	C7	"
12	#8	23'-6"	G1	Beam					
4	#6	23'-6"	G2	"	4	#4	6'-9"	R1	End Post
8	#11	26'-0"	G3	"	4	#4	7'-0"	R2	"
12	#10	12'-0"	G4	"	4	#4	7'-6"	R3	"
16	#7	6'-3"	G5	"	8	#4	7'-9"	R4	"
					32	#4	3'-9"	R5	"
2	#4	527'-6"	P1	Col. Bt. 2	826	#5	27'-6"	S1	Slab
2	#4	570'-0"	P2	Col. Bt. 4	296	#4	30'-6"	S2	"
					24	#5	29'-9"	S3	"
84	#5	10'-9"	U1	Beam	108	#5	16'-0"	S4	"
4	#5	9'-0"	U2	"	216	#5	30'-6"	S5	"
16	#11	20'-6"	V4	Col. Bt. 2					
16	#11	21'-9"	V5	Col. Bt. 4					
16	#2	19'-9"	W1	A.B. Well					

Note: Make 12 turns top and bottom and at splices.



Note: Soundings were taken with an auger.  
For location of soundings see sheet No. 1.  
LOG OF SOUNDINGS



PROFILE GRADE ELEVATIONS

BRIDGE: GENE FIELD ROAD UNDERPASS

STATE ROAD: INTERSTATE ROUTE 29

ABOUT 5.0 MILES N.E. OF ST. JOSEPH

PROJECT NO. I-29-208(X) RTE 29 STA. 19+00.00-21+00.00

BUCHANAN

COUNTY

Drawn NOV. 1960 by W.G.S.  
Checked Jan 1961 by R.W.M. & W.E.S.

Note: This drawing is not to scale. Follow dimensions.

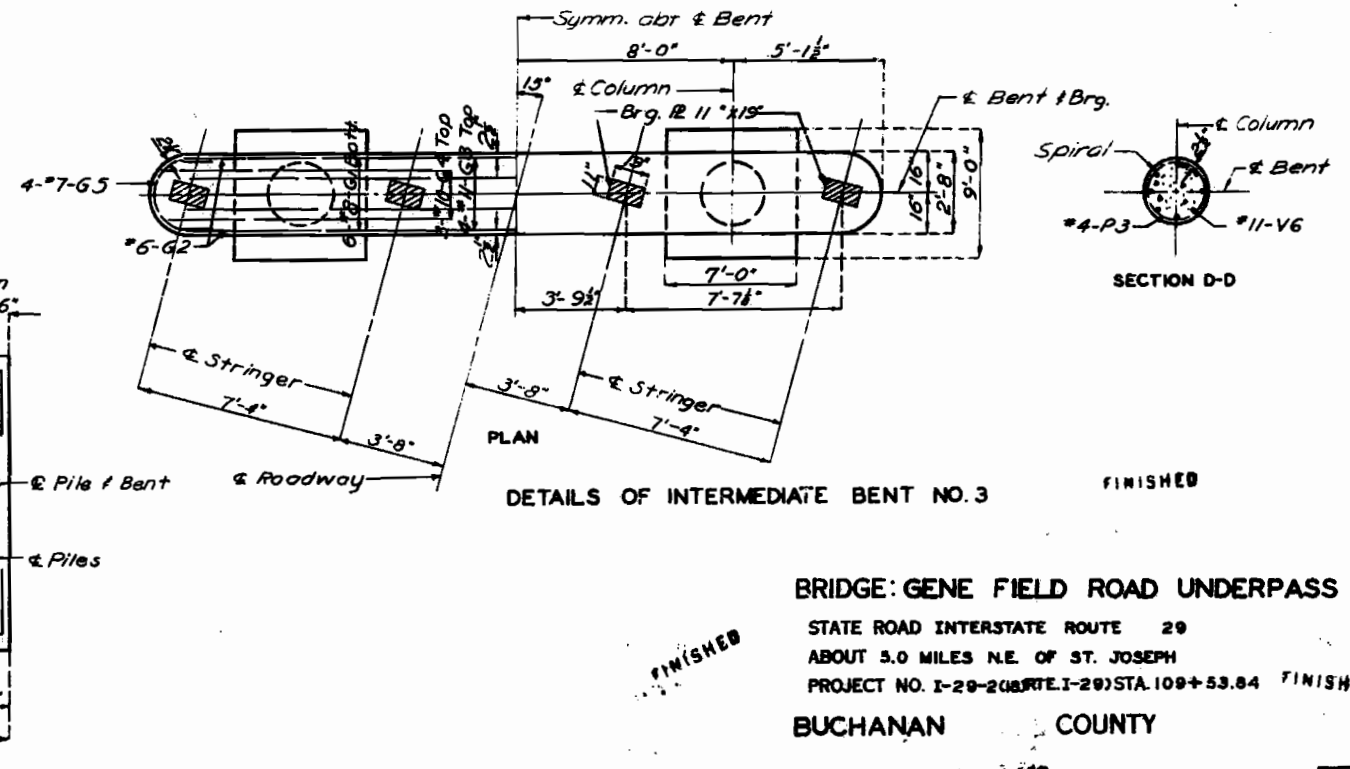
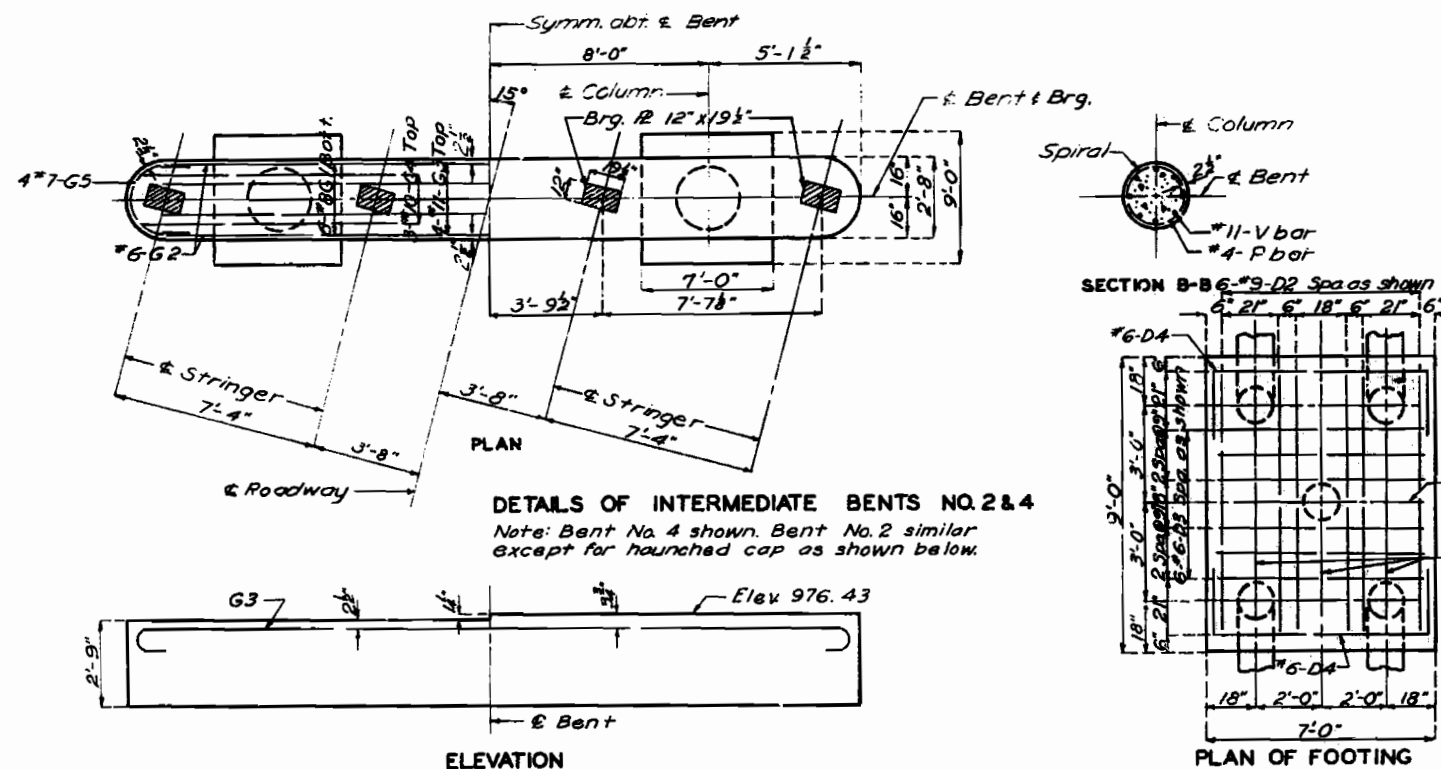
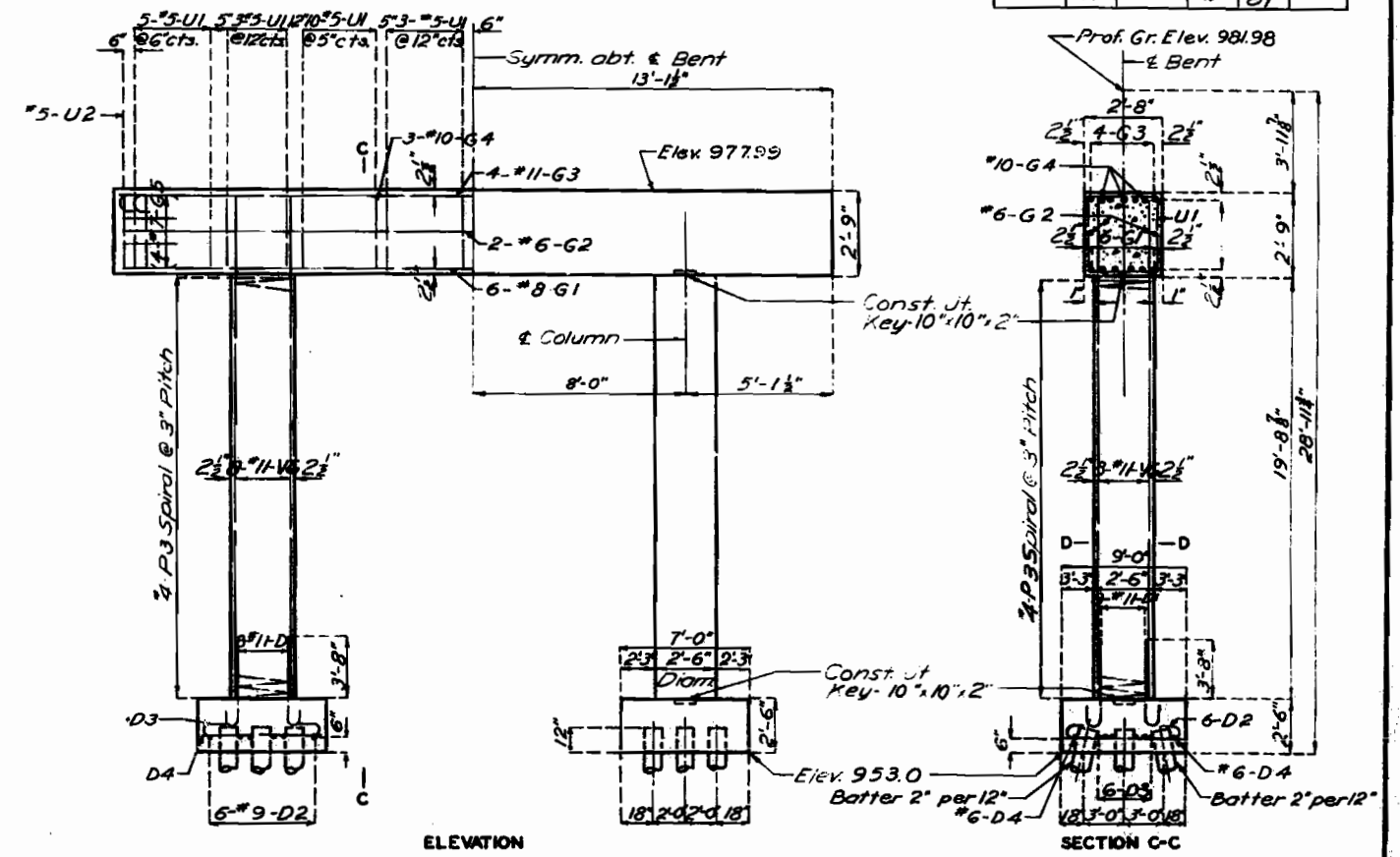
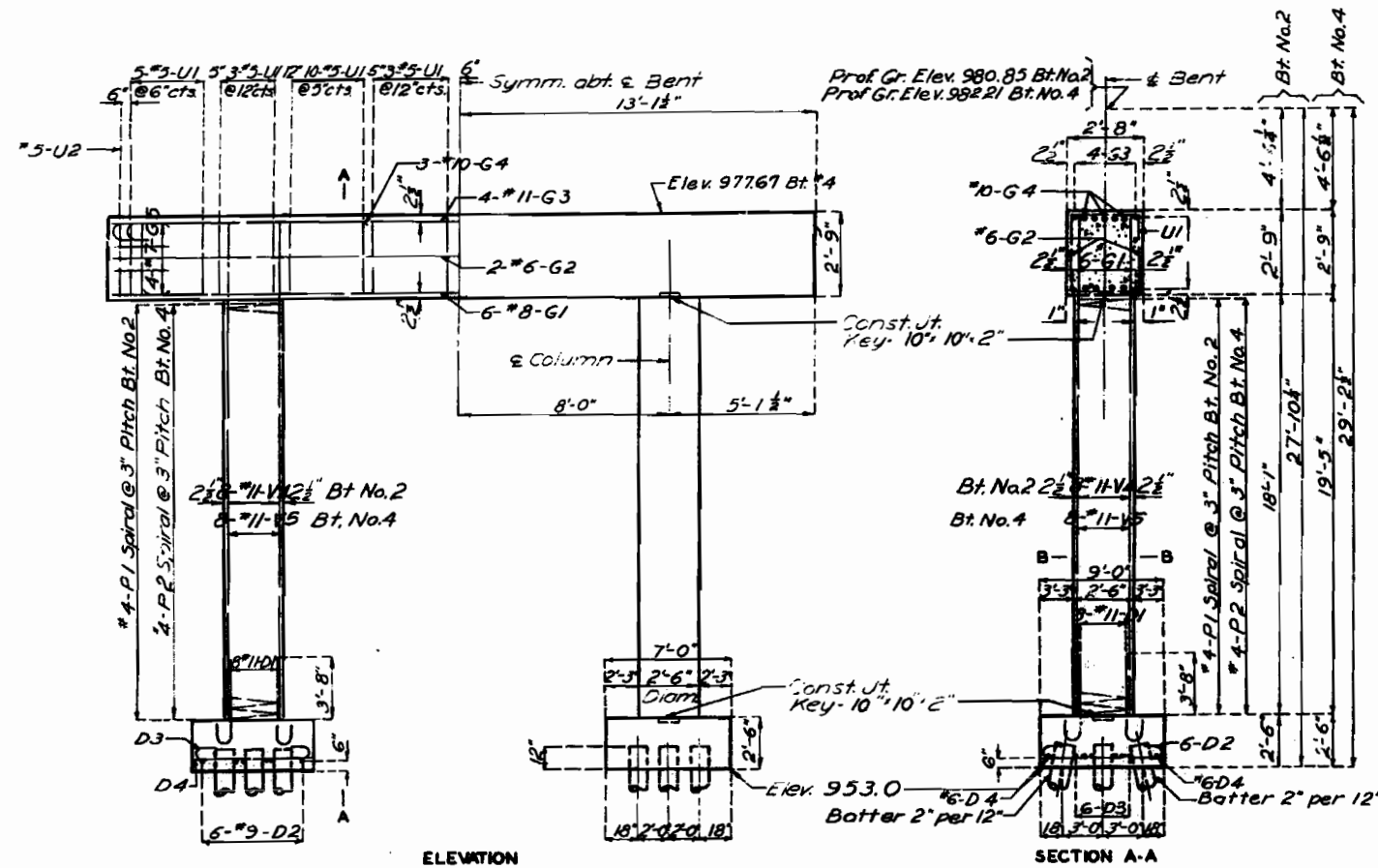
Sheet No. 2 of 9

A-701



# MISSOURI STATE HIGHWAY DEPARTMENT

FED. ROAD DIST. NO.	STATE	FED. AID PROJ. NO.	FISCAL YEAR	SHEET NO.	TOTAL SHEETS
3	MO.		19	91	



**BRIDGE: GENE FIELD ROAD UNDERPASS**  
 STATE ROAD INTERSTATE ROUTE 29  
 ABOUT 5.0 MILES N.E. OF ST. JOSEPH  
 PROJECT NO. I-29-208(RTE. I-29) STA. 109+53.84 **FINISHED**  
 BUCHANAN COUNTY

Drawn Oct. 1960 by W.G.S. & W.K.B.  
 Checked Jan. 1961 by R.M.M.

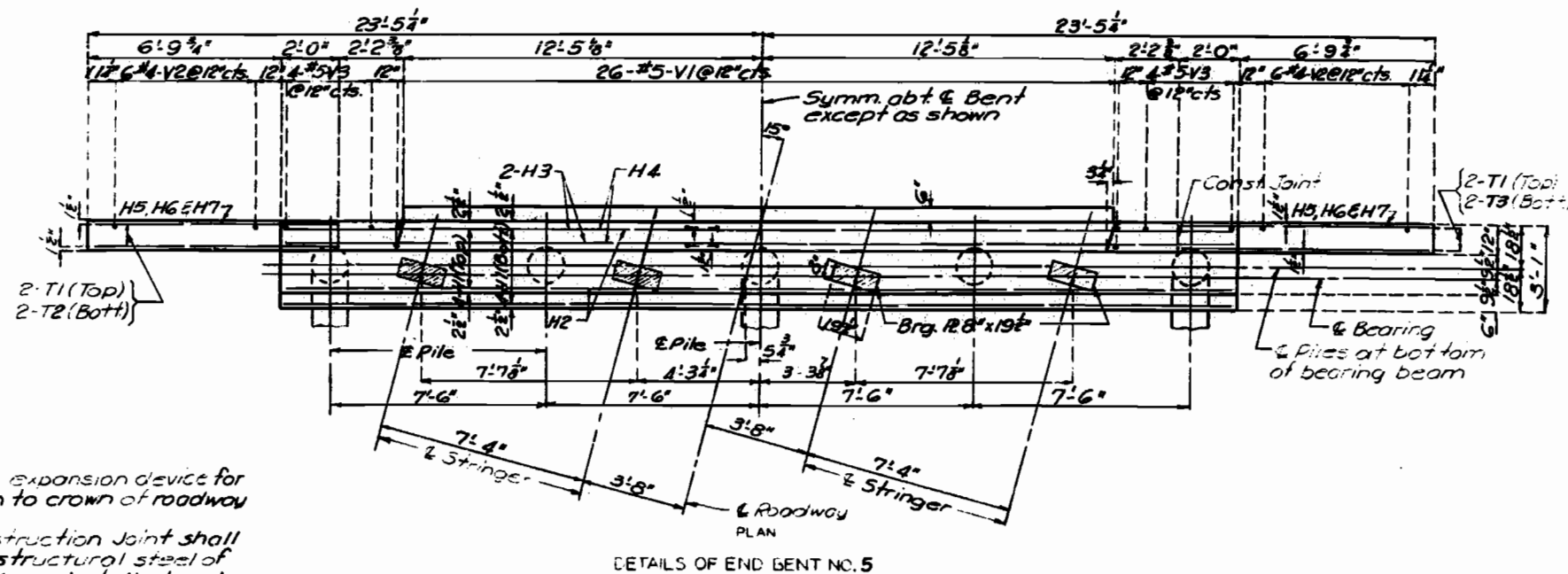
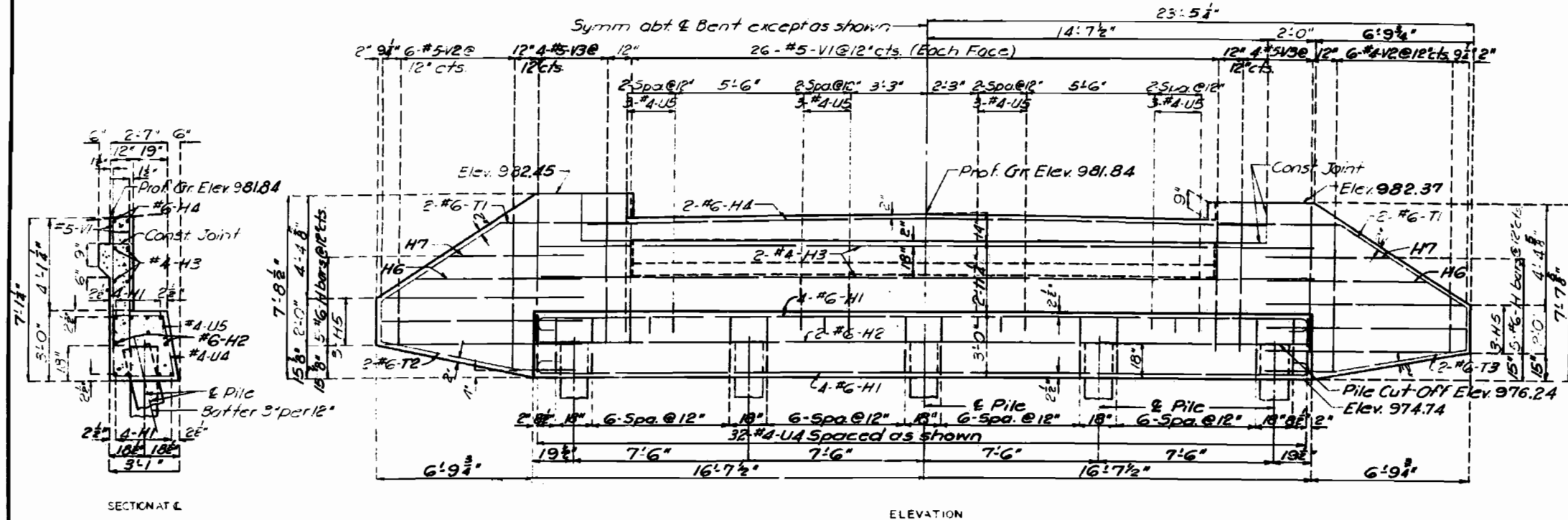
Note: This drawing is not to scale. Follow dimensions.

Sheet No. 4 of 9

NO CONSTRUCTION CHANGES

A-701

FED. ROAD DIST. NO.	STATE	FED. AID PROJ. NO.	FISCAL YEAR	SHEET NO.	TOTAL SHEET
3	MO.		18	82	



Note: Top of backwall and expansion device for  
erabent No.5 to conform to crown of roadway  
slab.

Backwall above construction joint shall not be poured until the structural steel of the expansion device has been installed and slab has been poured in adjacent span.

Fill of and bent No. 5 shall not be carried above bottom of beam and wings until superstructure span (4-5) is in place.

FINISHED

BRIDGE: GENE FIELD ROAD UNDERPASS

STATE ROAD INTERSTATE ROUTE 29

ABOUT 5.0 MILES N.E. OF ST. JOSEPH

PROJECT NO. I-29-218 (RTE. I-29) STA. 109+53.84

BUCHANAN COUNTY

FINISHED

A-701

Drawn NOV. 1960 by W.G.S.  
Checked Jan. 1961 by W.E.S.

**Note:** This drawing is not to scale. Follow dimensions.

Sheet No. 5 of 9

NO CONSTRAINT ON OIL PRICE

05/

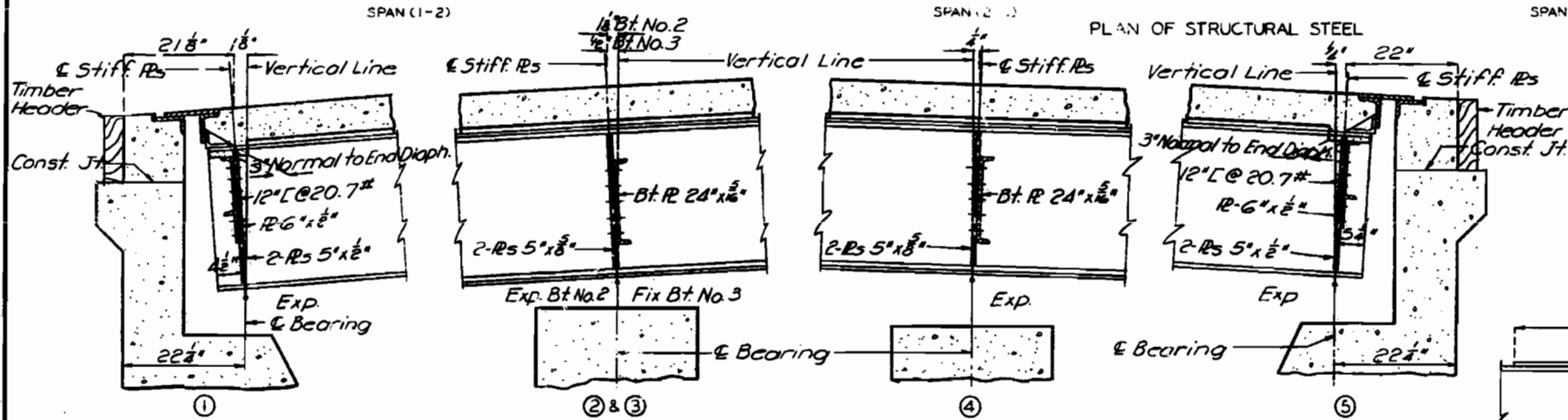
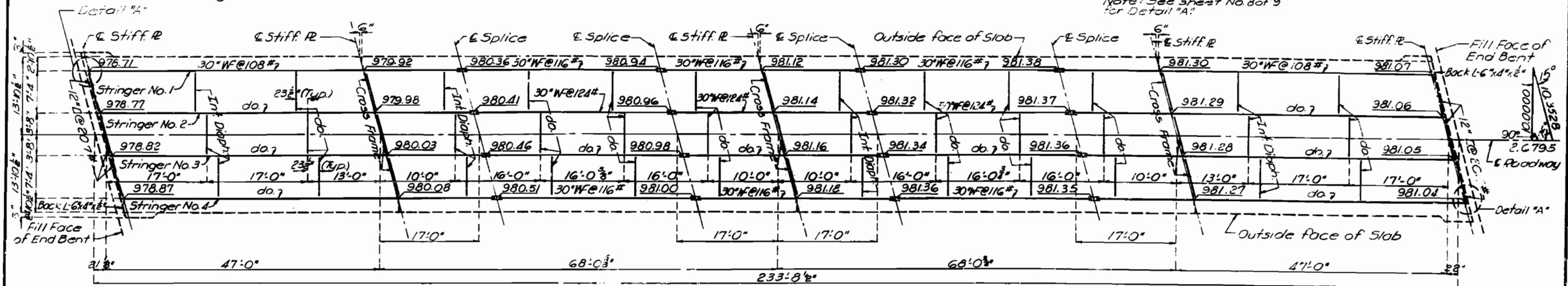


# MISSOURI STATE HIGHWAY DEPARTMENT

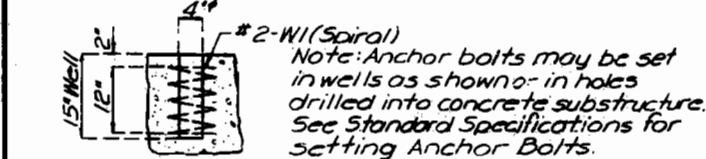
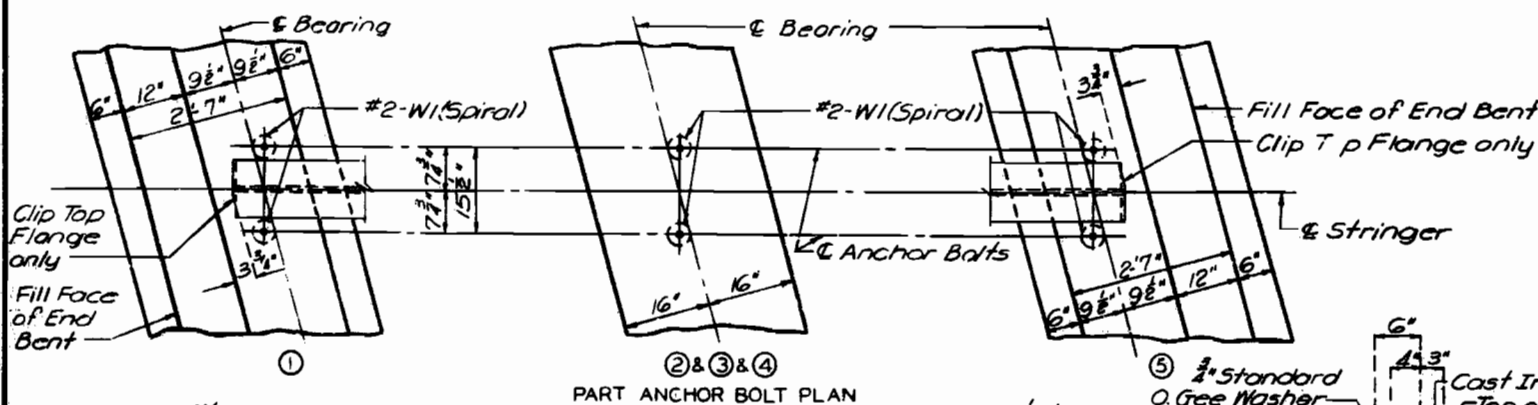
FED. ROAD DIST. NO.	STATE	FED. AID PROJ. NO.	FISCAL YEAR	SHEET NO.	TOTAL SHEETS
5	MO.		19	43	

Note: Dimensions shown are parallel to grade at crown of roadway.  
Elevation shown are at top of stringers.

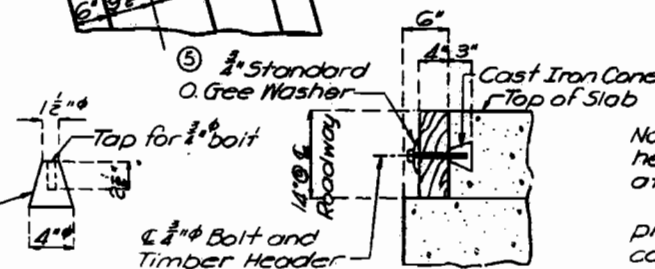
Note: See sheet No. 8 of 9 for Detail "A"



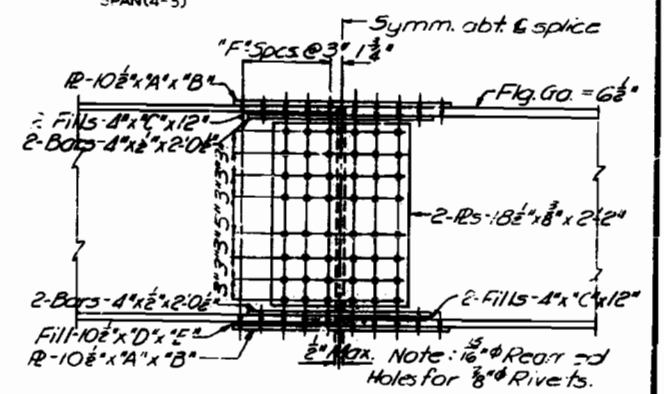
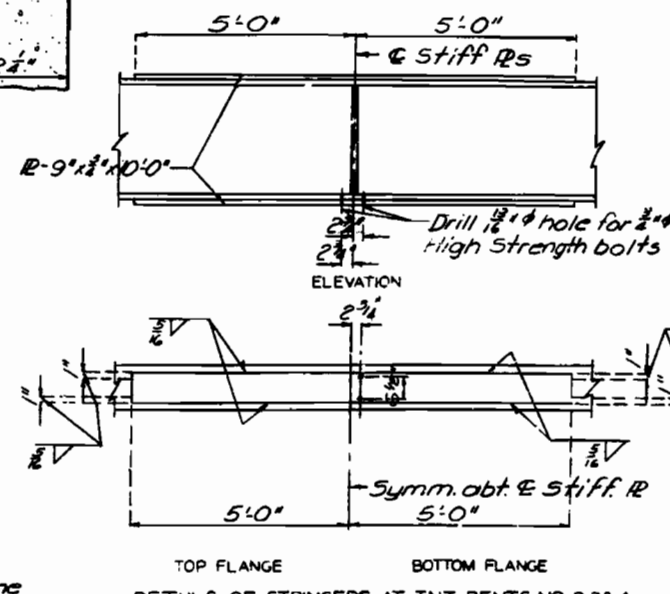
Note: Grind Stiff. Rs to bear top and bottom.



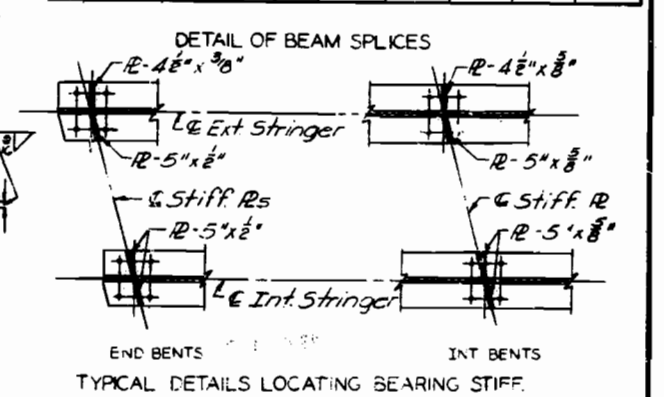
Cast Iron Cone or an approved equivalent



Note:  $\frac{3}{4}$ " bolt shall be 6' long with square head, threaded 3" long and placed at abt. 3'-0" cts.  
Cost of timber header complete in place to be included in price bid for concrete.

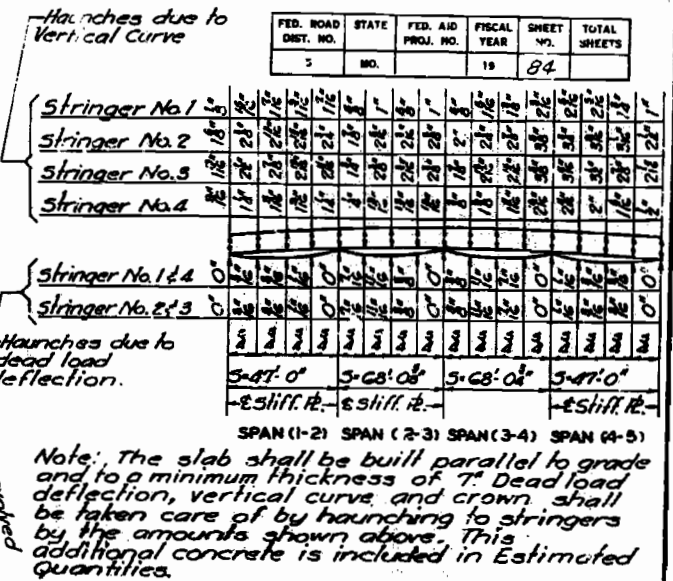


Beam Sizes	"A"	"B"	"C"	"D"	"E"	"F" Specs.
30" W@108# to 116#	1/2"	2'-6"	13'0"	3/16"	15"	4
30" W@108# to 124#	1/2"	2'-6"	8'0"	3/16"	15"	4
30" W@116# to 116#	3/4"	3'-0"	—	—	—	5
30" W@124# to 124#	3/4"	3'-0"	—	—	—	5



BRIDGE: GENE FIELD ROAD UNDERPASS  
STATE ROAD: INTERSTATE ROUTE 29  
ABOUT 5.0 MILES N.E. OF ST. JOSEPH  
PROJECT NO. I-29-2018XRT. I-29 STA. 09+53.84  
BUCHANAN COUNTY

25/



Finish each side of joint with  $\frac{1}{2}$ " radius edging tool. Fill groove with joint seal.

24'-0" Roadway

12'-0" 12'-0"

Note: For details of curbs and handrail not shown see sheet No. 9 of 9.

Top of slab. Slope 1/2" per foot.

Parabolic Crown

Const. Joint

Symm. abt. E Roadway

Crown of Roadway

#5-C bars

#5-C1

#5-C2

#5-C3

#5-51 #5-52 #5-53 #5-54 #5-55

Use 3/4" bevel strip

3"

12'-24" x 16"

12'-24" x 16"

12'-24" x 16"

12'-24" x 16"

12'-5" x 8"

12'-5" x 8"

12'-9" x 12"

12'-4 1/2" x 8"

12'-5" x 8"

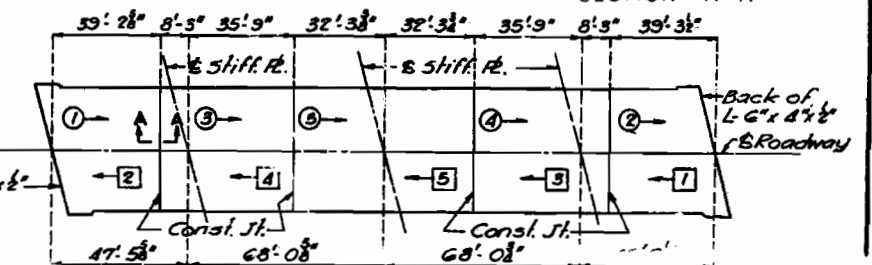
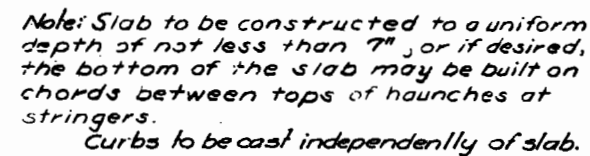
2'-10 1/2" 7'-4" 3'-8" 3'-8" 7'-4" 2'-10 1/2"

6" Stringer

6" Stringer

HALF SECTION NEAR CENTER OF SPAN

HALF SECTION NEAR INT. BENTS



Note: The slab shall be poured in sections of the lengths shown above and in the sequence indicated by the numbers ①, ②, ③, ④, ⑤ or as an alternate, i.e., the numbers ① ② ③ ④ ⑤. The separate pours shall progress in the direction indicated by the arrows. Longitudinal construction joints will not be permitted. The above pouring sequence and the number of construction joints may be altered by the Engineer in order to obtain a more satisfactory surface finish. See section 53.4.12 of the standard specifications.

SLAB POURING SEQUENCE FINISHED

**BRIDGE: GENE FIELD ROAD UNDERPASS**

STATE ROAD: INTERSTATE ROUTE 29 FINISHED  
ABOUT 5.0 MILES N.E. OF ST. JOSEPH  
PROJECT NO. I-29-2 (18) (RTE. I-29) STA. 109+53.84

BUCHANAN COUNTY

FINISHED

A-701

Sheet No. 7 of 9

NO CONSTRUCTION CHANGES

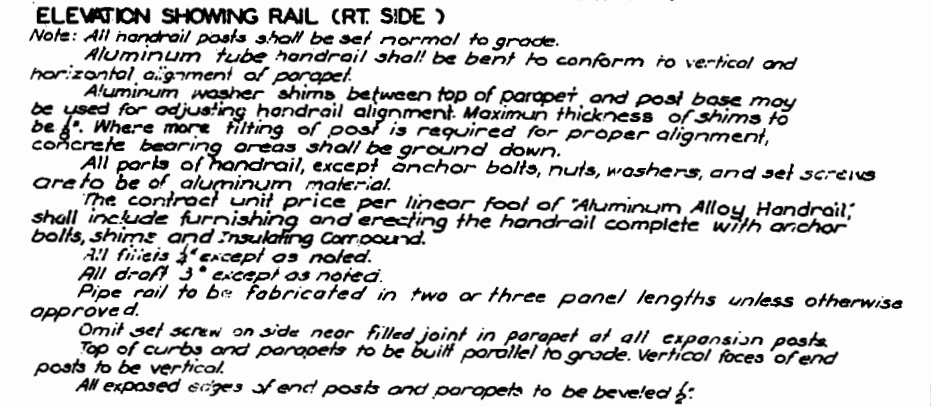
Drawn Oct. 1960 by W.G.S. & J.H.K.  
Checked Jan 1961 by W.E.S.

**Note:** This drawing is not to scale. Follow dimensions.

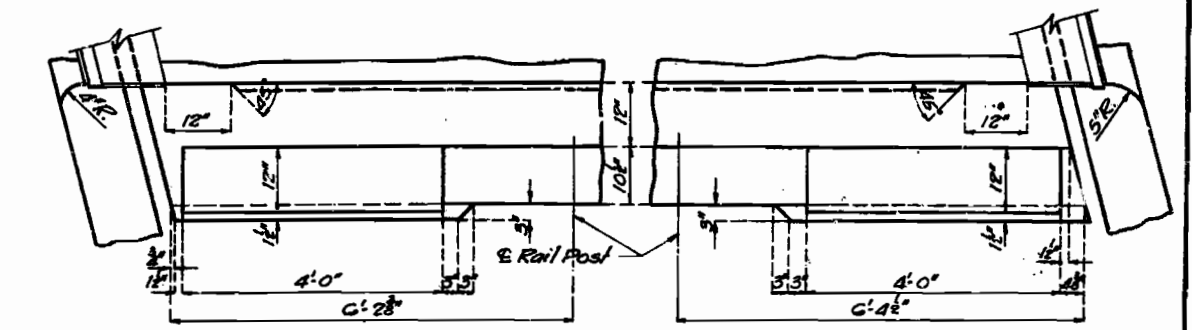




FED. ROAD DIST. NO.	STATE	FED. AID PROJ. NO.	FISCAL YEAR	SHEET NO.	TOTAL SHEETS
5	MO.		19	56	



### SINGLE TUBE ALUMINUM RAILING



**BRIDGE: GENE FIELD ROAD UNDERPASS**  
**STATE ROAD: INTERSTATE ROUTE 20** **FINISHED**  
**ABOUT 5.0 MILES N.E. OF ST. JOSEPH**  
**PROJECT NO. I-29-2(18) (RTE. I-29) STA. 109+53.84**

**BUCHANAN** **COUNTY**

A-701

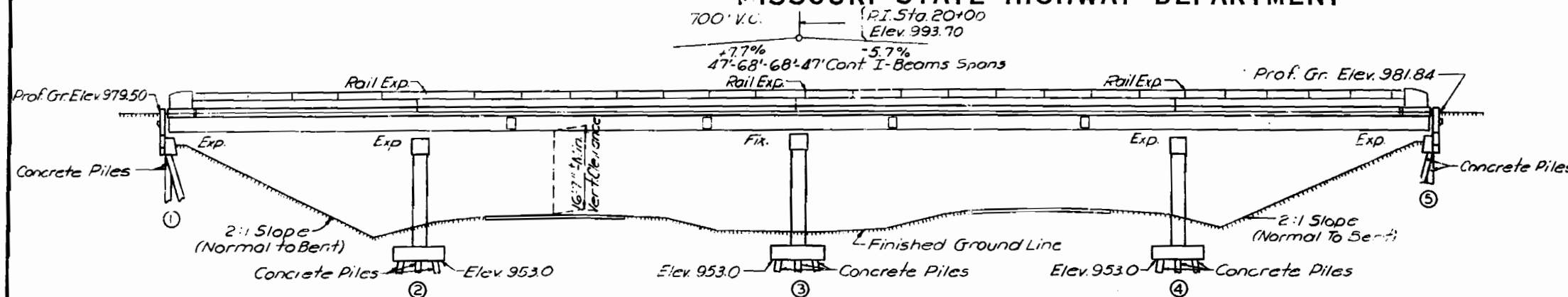
Revised 7/25/60

NO CONSTRUCTION CHANGES



# MISSOURI STATE HIGHWAY DEPARTMENT

FED. ROAD DIST. NO.	STATE	FED. AID PROJ. NO.	FISCAL YEAR	SHEET NO.	TOTAL SHEETS
5	MO.		19		



DATA FOR PILE DRIVING			
Bent No.	1	2,3-4	5
"Plan" Capacity Per Pile	320T.	300T.	320T.
"Comp. 3" Capacity Regd Per Pile	20.5T.	30.0T.	20.5T.
Min. Penetration (Pile Tip Elev.)	945.0	940.0	950.0

Note: All piling were cast-in-place concrete piles and confirmed with details and notes on standard 52.02 except as otherwise specified. Quantities shown on plans are based on the following lengths: 5 @ 40'-0" Bent No. 1; 30 @ 20'-0" Bents No. 2, 3 & 4 and 5 @ 45'-0" Bent No. 5.

Proper lengths to give required bearing and penetration were determined by the Contractor. All piles were driven to the minimum penetrations noted and to not less than the specified "Plan" capacities.

Note: Compacted roadway fill (full roadway width) was placed up to elevation of bottom of concrete beam in front of and not less than 25'-0" in back of End Bent No. 1 & 5 before concrete piles were driven.

All piling were of the (thick-shell) Trestle Type.

## GENERAL NOTES:

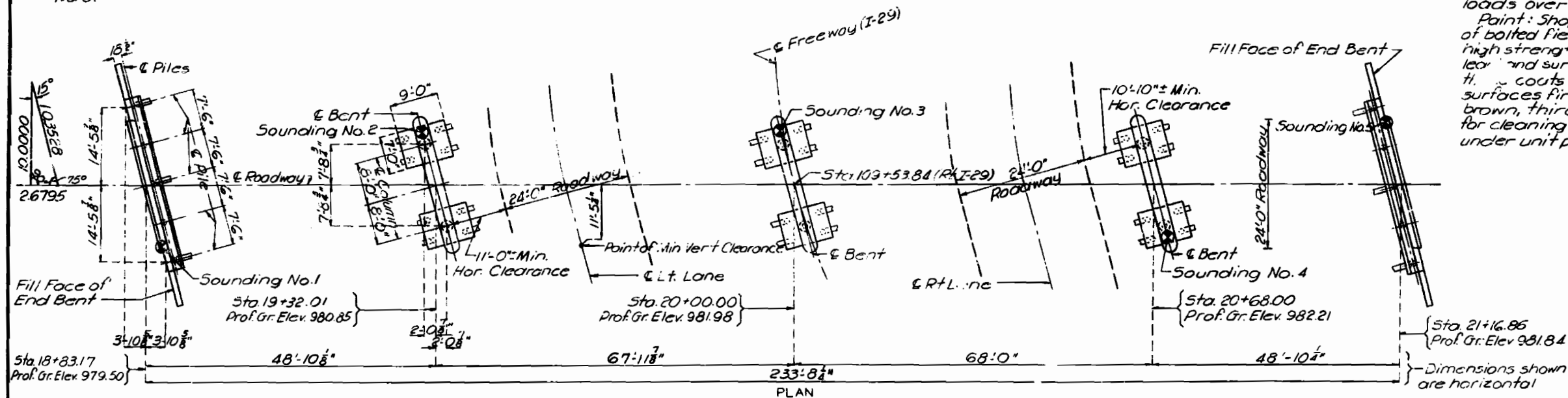
Design Specifications A.A.S.H.O. - 1957 (As Revised)  
Loading H15-44 115 #sq. Ft. Future Wearing Surface  
Structural Steel Stress 18,000 #/sq. inch.  
Reinforcing Steel Stress 20,000 #/sq. inch.  
Concrete, Class B Stress 1,200 #/sq. inch.  
Concrete, Class B1 Stress 1,600 #/sq. inch.  
Superstructure concrete was Class B1.  
Substructure concrete was Class B.  
All concrete was air-entrained.  
Superstructure deck was surface sealed.  
See special provisions.

Field connections were bolted with high strength bolts. Final pay weight for Fabricated Structural carbon steel was based on the use of field rivets. Qualification of welding operators was required.

Where Joist filler is specified on the plans it conformed with the requirements of section 157.2.4 of the Standard Specifications.

Steel shells for cast-in-place piles were painted as specified for steel piles in Section 52.4.7 of the Standard Specifications. Permits were obtained for all truck loads over legal length.

Paint: Shop, none; Field, contact surfaces of bolted field connections (except where high strength bolts are used) one coat of red lead and surfaces inaccessible after erection th. coats of red lead. All other exposed surfaces first coat red lead, second coat brown, third coat aluminum. Payment for cleaning and all painting was made under unit price bid for painting.



QUANTITIES			
ITEM	Substr.	Superstr.	Total
Class I Excavation for Structures	Cu. Yds.	178	178
Class B Concrete	Cu. Yds.	113.9	113.9
Class B1 Concrete	Cu. Yds.	191.9	191.9
Fabricated Structural Carbon Steel	Lbs.	134,510	134,510
Reinforcing Steel	Lbs.	20,510	20,510
Cast-in-Place Concrete Piles	Lin. Ft.	935	935
Bridge Rail (Single Tube Type)	Lin. Ft.	445	445
Painting	Tons	67.3	67.3

Note: All excavation for bridge was paid for as Class I Excavation for Structures. Weight of type "D" bearings is included in weight of Fabricated Structural Carbon Steel.

For location of soundings see sheet No. 2 of 9.  
No payment for excavation was allowed for End Bents No. 1 & 5.

B.M. 18+44.5 47.3' Lt. (Gene Field Road) Steel Marker Set in Conc. Elev. 971.40

BRIDGE: GENE FIELD ROAD UNDERPASS

STATE ROAD: INTERSTATE ROUTE 29 FINISHED

ABOUT 5.0 MILES N.E. OF ST. JOSEPH

PROJECT NO. I-29-2 (18XRT. I-29) STA. 18+83.17-21+16.86

BUCHANAN COUNTY

SUBMITTED BY: DATE: APPROVED BY: DATE:

STD 52.02

STD 54.00

A-701

Drawn NOV. 1960 by W.G.C.  
Checked Jan. 1961 by W.E.S.

Note: This drawing is not to scale. Follow dimensions.

Sheet No. 1A of 1

FINAL PLANS

155



Missouri Department of Transportation  
Bridge Inventory and Inspection System  
Structural Inventory & Appraisal Sheet

January 16, 2025  
10:39:33am

COUNTY : BUCHANAN      BRIDGE : A0701      REVIEW STATUS : APPROVED      NBI STATUS : T  
RECORD TYPE :      ROUTE CARRIED 'ON' STRUCT      RUN DATE : 11/27/2024      SUBMITTAL YEAR : 2024

GENERAL STRUCTURE INFORMATION			ROUTE DESIGNATION INFORMATION		
1	State	MISSOURI	5A	Record Type	ROUTE CARRIED 'ON' STRUCT
2	District	NW	5B	Route Signing Prefix	CST
3	County	BUCHANAN	5C	Designated Level of Service	MAINLINE
8	Federal ID No.	509	5D	Route Number	00000
27	Year Built	1962	5E	Directional Suffix	NOT APPLICABLE
106	Year Reconstructed	0	7	Facility Carried	GENE FIELD RD E
42A	Type of Service On	HIGHWAY	12	Base Hwy. Network	NO
21	Structure Maintenance	STATE HIGHWAY AGENCY	13A	LRS Inventory Route No.	
22	Structure Owner	STATE HIGHWAY AGENCY	13B	Subroute No.	
33	Br. Median Code	NO MEDIAN	20	Toll Status	ON FREE ROAD
37	Historical Significance	NOT ELIGIBLE FOR NR OF HP	26	Functional Classification	16-URBAN MINOR ARTERIAL
101	Parallel Struc Desg	NONE EXISTS	28A	Lanes on Structure	02
103	Temporary Structure	NOT TEMPORARY	100	STRAHNET Designation	RTE NOT A DEFENSE HWY
112	NBIS Bridge Length	YES	104	National Highway System	NOT ON NHS
			105	Federal Lands Highway	NOT APPLICABLE
			110	Designated Nat. Network	NO
STRUCTURE LOCATION INFORMATION			STRUCTURE TRAFFIC INFORMATION		
4	Place	ST. JOSEPH CITY	29	AADT	7066
	Code	64550	30	AADT Year	2023
9	Location	S 2 T 57 N R 35 W	102	Direction of Traffic	2-WAY TRAFFIC
11	Milepoint	1.85 miles	109	AADT Truck Percent	4%
16	Latitude	39 D 47 M 32 S	114	Future AADT	9539
17	Longitude	94 D 47 M 46 S	115	Future AADT Year	2043
UNDERRECORD INFORMATION			STRUCTURE GEOMETRIC INFORMATION		
6	Features Intersected	IS 29	10	Inventory Rte. Vert. Clear	99 Ft. 99 In.
42B	Type of Service Under	HIGHWAY	19	By pass Detour Length	3.13 miles
28B	Lanes Under Structure	04	32	Approach Roadway Width	20 Ft. 0 In.
54A	Vert. Clearance Ref.	HIGHWAY	34	Skew	15.00 Degrees
54B	Vert. Clearance	15 Ft. 9 In.	35	Struct. Flared	NO
55A	Rt. Lat Clear Ref.	HIGHWAY	47	Total Horiz. Clear	23 Ft. 11 In.
55B	Rt. Lat Clearance	11 Ft. 2 In.	48	Maximum Span Length	67 Ft. 11 In.
56	Left Lat Clearance	28 Ft. 10 In.	49	Structure Length	233 Ft. 11 In.
38	Navigation Control	N/A	50A	Left Curb/Sidewalk Width	0 Ft. 0 In.
39	Nav Vertical Clear	0 Ft. 0 In.	50B	Right Curb/Sidewalk Width	0 Ft. 0 In.
40	Nav Horizontal Clear	0 Ft. 0 In.	51	Curb to Curb Br. Width	23 Ft. 11 In.
111	Nav. Pier Protection		52	Deck Width (Out-Out)	27 Ft. 11 In.
116	Nav. Cl. Vert. Clear		53	Vert. Clearance Over Deck	99 Ft. 99 In.

Design\_No = A0701





Missouri Department of Transportation  
Bridge Inventory and Inspection System  
Structural Inventory & Appraisal Sheet

January 16, 2025  
10:39:33am

COUNTY : BUCHANAN      BRIDGE : A0701      REVIEW STATUS : APPROVED      NBI STATUS : T  
RECORD TYPE : ROUTE CARRIED 'ON' STRUCT      RUN DATE : 11/27/2024      SUBMITTAL YEAR : 2024

LOAD RATING AND POSTING INFORMATION			MATERIAL/CONSTRUCTION INFORMATION		
31	Design Load	H 15	43A	Main Struc. Mat type	STEEL CONTINUOUS
41	Structure Status	POSTED FOR LOAD	43B	Main struc Constr. Type	STRINGER/MULTIBEAM - GRD
63	Oper. Rating Meth.	ALLOWABLE STRESS	45	# of Main Spans	4
64	Operating Rating	37 Tons.	44A	Appr Struc. Mat type	000
65	Inventory Rating Meth	ALLOWABLE STRESS	44B	Appr Struc. Cnstr. type	000
66	Inventory Rating	19 Tons.	46	# of Approach Span	0
70	Bridge Posting Code	=>LEGAL LOADS	107	Deck Mat/Constr.	1 CONCRETE CIP
PROPOSED IMPROVEMENT INFORMATION			108A	Wear Surf Mat/Constr.	6 BITUMINOUS
Sufficiency Rating 38.6 Percent			108B	Membrane Mat/Constr.	0 NONE
Deficiency Rating STRUCTURAL			108C	Deck Protect Mat/Constr.	0 NONE
Funding Eligibility FULL			CONDITION RATING INFORMATION		
75A	Proposed Work	REPLACEMENT SUBSTND LOAD	58	Deck Cond. Rating	3
75B	Work Done By	Contract	59	Superstructure Cond. Rating	5
76	New Struc Length	269 Ft. 0 In.	60	Substructure Cond. Rating	6
94	Struc Improve Cost	\$ 1,721,000	61	Channel /Channel Protection Cond. Rating	N
95	Roadway Improve Cost	\$ 172,000	62	Culvert Cond. Rating	N
96	Total Project Cost	\$ 2,582,000	INSPECTION INFORMATION		
97	Year of Cost Estimates	2024	90	Gen. Insp Date	7 / 24
APPRAISAL RATING INFORMATION			91	Gen. Insp. Frequency	24 Months
36A	Br. Rail App. Rating	DOES NOT MEET ACCEPT STND	92A	Frac. Critical Inspection	N Months
36B	Transition Rail App. Rating	DOES NOT MEET ACCEPT STND	93A	Frac. Critical Insp. Date	
36C	Approach Rail App. Rating	DOES NOT MEET ACCEPT STND	92B	Underwater Inspection	N Months
36D	Rail End Treat. App. Rating	DOES NOT MEET ACCEPT STND	93B	Underwater Insp. Date	
67	Struc Eval App. Rating	4	92C	Special Inspection	N Months
68	Deck Geometry App. Rating	2	93C	Special Inspection Date	
69	Underclearance App. Rating	5	BORDER BRIDGE INFORMATION		
71	Waterway Adeq. App. Rating	N	98	Neighboring State Code	
72	Approach Road App. Rating	8	98B	Neighboring State % Respon	
113	Scour Assess App. Rating	N	99	Neighboring State Struc. No.	
APPROVED POSTING INFORMATION			FIELD POSTING INFORMATION		
Approved Posting Category S-C3			Field Posting Category S-C3		
Ton1 Ton2 Ton3			Ton1 Ton2 Ton3		
Tonnage Values for Posting Sign 45			Tonnage Values for Posting Sign 45		
General Text for Posting Sign			General Text for Posting Sign		
WEIGHT LIMIT 45 TONS.			WEIGHT LIMIT 45 TONS.		

Design\_No = A0701



Missouri Department of Transportation  
Bridge Inventory and Inspection System  
Structural Inventory & Appraisal Sheet

January 16, 2025  
10:39:33am

COUNTY : BUCHANAN      BRIDGE : A0701      REVIEW STATUS : APPROVED      NBI STATUS : T  
RECORD TYPE : 1 RTE THAT GOES 'UNDER' S      RUN DATE : 11/27/2024      SUBMITTAL YEAR : 2024

GENERAL STRUCTURE INFORMATION

1 State MISSOURI  
2 District NW  
3 County BUCHANAN  
8 Federal ID No. 509  
27 Year Built 1962  
106 Year Reconstructed 0  
42A Type of Service On HIGHWAY  
21 Structure Maintenance  
22 Structure Owner  
33 Br. Median Code  
37 Historical Significance  
101 Parallel Struc Desg NONE EXISTS  
103 Temporary Structure NOT TEMPORARY  
112 NBIS Bridge Length

ROUTE DESIGNATION INFORMATION

5A Record Type 1 RTE THAT GOES 'UNDER' S Code : A  
5B Route Signing Prefix IS  
5C Designated Level of Service MAINLINE  
5D Route Number 00029  
5E Directional Suffix NOT APPLICABLE  
7 Facility Carried GENE FIELD RD E  
12 Base Hwy. Network  
13A LRS Inventory Route No.  
13B Subroute No.  
20 Toll Status ON FREE ROAD  
26 Functional Classification 11-UR PRNCPL ARTERIAL-IS  
28A Lanes on Structure 02  
100 STRAHNET Designation ON A DEFENSE HWY  
104 National Highway System ON NHS  
105 Federal Lands Highway  
110 Designated Nat. Network YES

STRUCTURE LOCATION INFORMATION

4 Place ST. JOSEPH CITY  
Code 64550  
9 Location S 2 T 57 N R 35 W  
11 Milepoint 75.52 miles  
16 Latitude 39 D 47 M 32 S  
17 Longitude 94 D 47 M 46 S

STRUCTURE TRAFFIC INFORMATION

29 AADT 21014  
30 AADT Year 2023  
102 Direction of Traffic 1-WAY TRAFFIC  
109 AADT Truck Percent 30%  
114 Future AADT  
115 Future AADT Year

UNDERRECORD INFORMATION

6 Features Intersected IS 29  
42B Type of Service Under HIGHWAY  
28B Lanes Under Structure 02  
54A Vert. Clearance Ref.  
54B Vert. Clearance  
55A Rt. Lat Clear Ref.  
55B Rt. Lat Clearance  
56 Left Lat Clearance  
38 Navigation Control  
39 Nav Vertical Clear  
40 Nav Horizontal Clear  
111 Nav. Pier Protection  
116 Nav. Cl. Vert. Clear

STRUCTURE GEOMETRIC INFORMATION

10 Inventory Rte. Vert. Clear 15 Ft. 9 In.  
19 By pass Detour Length 0.00 miles  
32 Approach Roadway Width  
34 Skew  
35 Struct. Flared  
47 Total Horiz. Clear 23 Ft. 11 In.  
48 Maximum Span Length 67 Ft. 11 In.  
49 Structure Length 233 Ft. 11 In.  
50A Left Curb/Sidewalk Width  
50B Right Curb/Sidewalk Width  
51 Curb to Curb Br. Width  
52 Deck Width (Out-Out)  
53 Vert. Clearance Over Deck

Design\_No = A0701





Missouri Department of Transportation  
Bridge Inventory and Inspection System  
Structural Inventory & Appraisal Sheet

January 16, 2025  
10:39:33am

COUNTY : BUCHANAN      BRIDGE : A0701      REVIEW STATUS : APPROVED      NBI STATUS : T  
RECORD TYPE : 1 RTE THAT GOES 'UNDER' S      RUN DATE : 11/27/2024      SUBMITTAL YEAR : 2024

LOAD RATING AND POSTING INFORMATION		MATERIAL/CONSTRUCTION INFORMATION	
<div>31</div> Design Load		<div>43A</div> Main Struc. Mat type      STEEL CONTINUOUS	
<div>41</div> Structure Status		<div>43B</div> Main struc Constr. Type      STRINGER/MULTIBEAM - GRD	
<div>63</div> Oper. Rating Meth.		<div>45</div> # of Main Spans	
<div>64</div> Operating Rating		<div>44A</div> Appr Struc. Mat type	
<div>65</div> Inventory Rating Meth		<div>44B</div> Appr Struc. Cnstr. type	
<div>66</div> Inventory Rating		<div>46</div> # of Approach Span	
<div>70</div> Bridge Posting Code		<div>107</div> Deck Mat/Constr.	
		<div>108A</div> Wear Surf Mat/Constr.	
		<div>108B</div> Membrane Mat/Constr.	
		<div>108C</div> Deck Protect Mat/Constr.	
PROPOSED IMPROVEMENT INFORMATION		CONDITION RATING INFORMATION	
Sufficiency Rating		<div>58</div> Deck Cond. Rating	
Deficiency Rating		<div>59</div> Superstructure Cond. Rating	
Funding Eligibility		<div>60</div> Substructure Cond. Rating	
<div>75A</div> Proposed Work		<div>61</div> Channel /Channel Protection Cond. Rating	
<div>75B</div> Work Done By		<div>62</div> Culvert Cond. Rating	
<div>76</div> New Struc Length			
<div>94</div> Struc Improve Cost			
<div>95</div> Roadway Improve Cost			
<div>96</div> Total Project Cost			
<div>97</div> Year of Cost Estimates			
APPRAISAL RATING INFORMATION		INSPECTION INFORMATION	
<div>36A</div> Br. Rail App. Rating		<div>90</div> Gen. Insp Date	
<div>36B</div> Transition Rail App. Rating		<div>91</div> Gen. Insp. Frequency	
<div>36C</div> Approach Rail App. Rating		<div>92A</div> Frac. Critical Inspection	
<div>36D</div> Rail End Treat. App. Rating		<div>93A</div> Frac. Critical Insp. Date	
<div>67</div> Struc Eval App. Rating		<div>92B</div> Underwater Inspection	
<div>68</div> Deck Geometry App. Rating		<div>93B</div> Underwater Insp. Date	
<div>69</div> Underclearance App. Rating		<div>92C</div> Special Inspection	
<div>71</div> Waterway Adeq. App. Rating		<div>93C</div> Special Inspection Date	
<div>72</div> Approach Road App. Rating			
<div>113</div> Scour Assess App. Rating			
APPROVED POSTING INFORMATION		BORDER BRIDGE INFORMATION	
Approved Posting Category		<div>98</div> Neighboring State Code	
Ton1      Ton2      Ton3		<div>98B</div> Neighboring State % Respon	
Tonnage Values for Posting Sign		<div>99</div> Neighboring State Struc. No.	
General Text for Posting Sign			
APPROVED POSTING INFORMATION		FIELD POSTING INFORMATION	
Approved Posting Category		Field Posting Category	
Ton1      Ton2      Ton3		Ton1      Ton2      Ton3	
Tonnage Values for Posting Sign		Tonnage Values for Posting Sign	
General Text for Posting Sign		General Text for Posting Sign	

Design\_No = A0701



Missouri Department of Transportation  
Bridge Inventory and Inspection System  
Structural Inventory & Appraisal Sheet

January 16, 2025  
10:39:33am

COUNTY : BUCHANAN      BRIDGE : A0701      REVIEW STATUS : APPROVED      NBI STATUS : T  
RECORD TYPE : 2ND RTE THAT GOES 'UNDR'S      RUN DATE : 11/27/2024      SUBMITTAL YEAR : 2024

GENERAL STRUCTURE INFORMATION			ROUTE DESIGNATION INFORMATION		
1	State	MISSOURI	5A	Record Type	2ND RTE THAT GOES 'UNDR'S    Code : B
2	District	NW	5B	Route Signing Prefix	IS
3	County	BUCHANAN	5C	Designated Level of Service	MAINLINE
8	Federal ID No.	509	5D	Route Number	00029
27	Year Built	1962	5E	Directional Suffix	NOT APPLICABLE
106	Year Reconstructed	0	7	Facility Carried	GENE FIELD RD E
42A	Type of Service On	HIGHWAY	12	Base Hwy. Network	
21	Structure Maintenance		13A	LRS Inventory Route No.	
22	Structure Owner		13B	Subroute No.	
33	Br. Median Code		20	Toll Status	ON FREE ROAD
37	Historical Significance		26	Functional Classification	11-UR PRNCPL ARTERIAL-IS
101	Parallel Struc Desg	NONE EXISTS	28A	Lanes on Structure	02
103	Temporary Structure	NOT TEMPORARY	100	STRAHNET Designation	ON A DEFENSE HWY
112	NBIS Bridge Length		104	National Highway System	ON NHS
			105	Federal Lands Highway	
			110	Designated Nat. Network	YES
STRUCTURE LOCATION INFORMATION			STRUCTURE TRAFFIC INFORMATION		
4	Place	ST. JOSEPH CITY	29	AADT	20643
	Code	64550	30	AADT Year	2023
9	Location	S 2 T 57 N R 35 W	102	Direction of Traffic	1-WAY TRAFFIC
11	Milepoint	53.97 miles	109	AADT Truck Percent	28%
16	Latitude	39 D 47 M 32 S	114	Future AADT	
17	Longitude	94 D 47 M 46 S	115	Future AADT Year	
UNDERRECORD INFORMATION			STRUCTURE GEOMETRIC INFORMATION		
6	Features Intersected	IS 29	10	Inventory Rte. Vert. Clear	16 Ft. 1 In.
42B	Type of Service Under	HIGHWAY	19	By pass Detour Length	0.00 miles
28B	Lanes Under Structure	02	32	Approach Roadway Width	
54A	Vert. Clearance Ref.		34	Skew	
54B	Vert. Clearance		35	Struct. Flared	
55A	Rt. Lat Clear Ref.		47	Total Horiz. Clear	23 Ft. 11 In.
55B	Rt. Lat Clearance		48	Maximum Span Length	67 Ft. 11 In.
56	Left Lat Clearance		49	Structure Length	233 Ft. 11 In.
38	Navigation Control		50A	Left Curb/Sidewalk Width	
39	Nav Vertical Clear		50B	Right Curb/Sidewalk Width	
40	Nav Horizontal Clear		51	Curb to Curb Br. Width	
111	Nav. Pier Protection		52	Deck Width (Out-Out)	
116	Nav. Cl. Vert. Clear		53	Vert. Clearance Over Deck	

Design\_No = A0701



Missouri Department of Transportation  
Bridge Inventory and Inspection System  
Structural Inventory & Appraisal Sheet

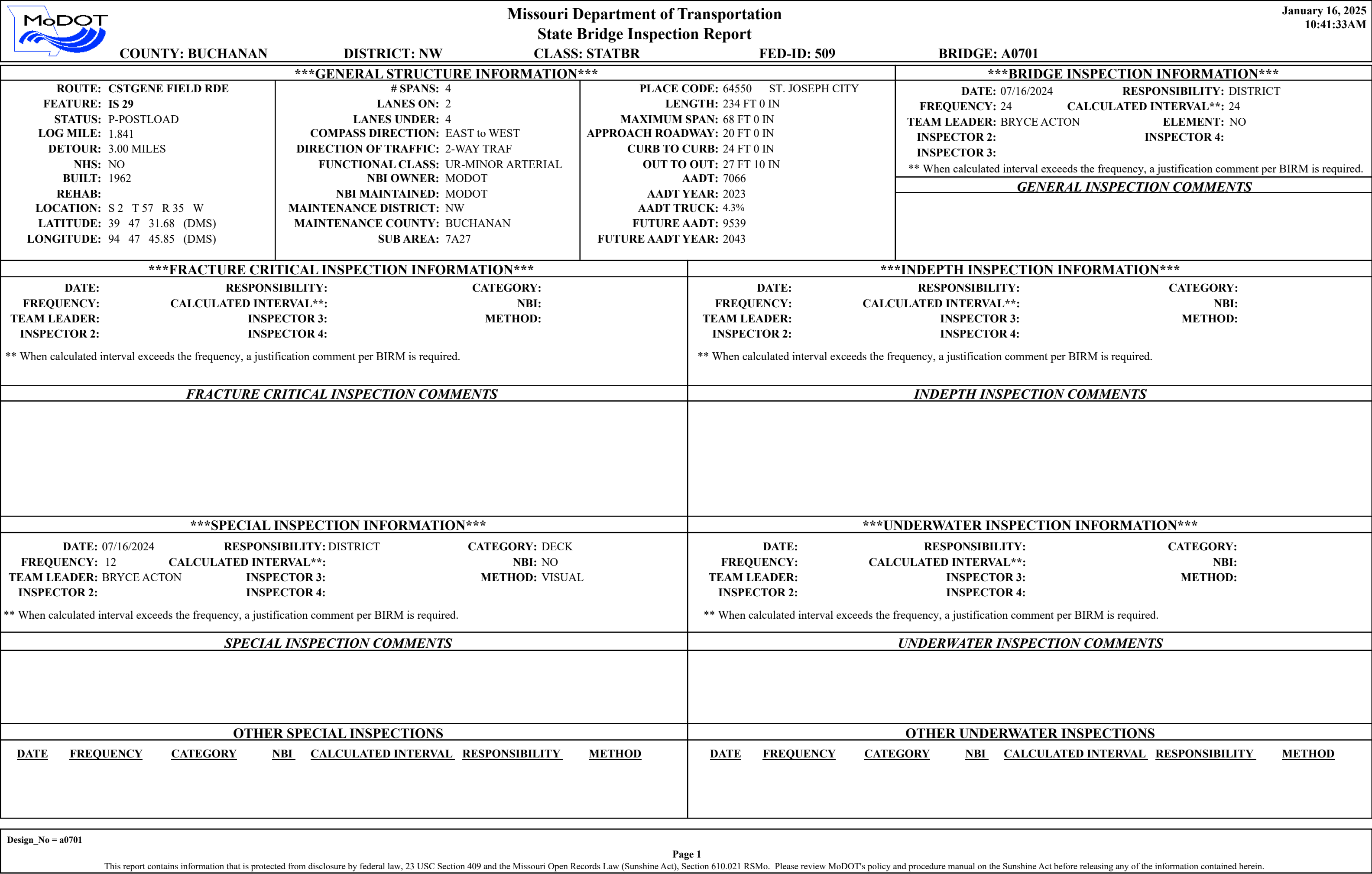
January 16, 2025  
10:39:33am


COUNTY : BUCHANAN      BRIDGE : A0701      REVIEW STATUS : APPROVED      NBI STATUS : T  
RECORD TYPE : 2ND RTE THAT GOES 'UNDR'S      RUN DATE : 11/27/2024      SUBMITTAL YEAR : 2024


LOAD RATING AND POSTING INFORMATION		MATERIAL/CONSTRUCTION INFORMATION	
<div>31</div> Design Load		<div>43A</div> Main Struc. Mat type	STEEL CONTINUOUS
<div>41</div> Structure Status		<div>43B</div> Main struc Constr. Type	STRINGER/MULTIBEAM - GRD
<div>63</div> Oper. Rating Meth.		<div>45</div> # of Main Spans	
<div>64</div> Operating Rating		<div>44A</div> Appr Struc. Mat type	
<div>65</div> Inventory Rating Meth		<div>44B</div> Appr Struc. Cnstr. type	
<div>66</div> Inventory Rating		<div>46</div> # of Approach Span	
<div>70</div> Bridge Posting Code		<div>107</div> Deck Mat/Constr.	
		<div>108A</div> Wear Surf Mat/Constr.	
		<div>108B</div> Membrane Mat/Constr.	
		<div>108C</div> Deck Protect Mat/Constr.	
PROPOSED IMPROVEMENT INFORMATION		CONDITION RATING INFORMATION	
Sufficiency Rating		<div>58</div> Deck Cond. Rating	
Deficiency Rating		<div>59</div> Superstructure Cond. Rating	
Funding Eligibility		<div>60</div> Substructure Cond. Rating	
<div>75A</div> Proposed Work		<div>61</div> Channel /Channel Protection Cond. Rating	
<div>75B</div> Work Done By		<div>62</div> Culvert Cond. Rating	
<div>76</div> New Struc Length			
<div>94</div> Struc Improve Cost		INSPECTION INFORMATION	
<div>95</div> Roadway Improve Cost		<div>90</div> Gen. Insp Date	
<div>96</div> Total Project Cost		<div>91</div> Gen. Insp. Frequency	
<div>97</div> Year of Cost Estimates		<div>92A</div> Frac. Critical Inspection	
		<div>93A</div> Frac. Critical Insp. Date	
		<div>92B</div> Underwater Inspection	
		<div>93B</div> Underwater Insp. Date	
		<div>92C</div> Special Inspection	
		<div>93C</div> Special Inspection Date	
APPRAISAL RATING INFORMATION		BORDER BRIDGE INFORMATION	
<div>36A</div> Br. Rail App. Rating		<div>98</div> Neighboring State Code	
<div>36B</div> Transition Rail App. Rating		<div>98B</div> Neighboring State % Respon	
<div>36C</div> Approach Rail App. Rating		<div>99</div> Neighboring State Struc. No.	
<div>36D</div> Rail End Treat. App. Rating			
<div>67</div> Struc Eval App. Rating			
<div>68</div> Deck Geometry App. Rating			
<div>69</div> Underclearance App. Rating			
<div>71</div> Waterway Adeq. App. Rating			
<div>72</div> Approach Road App. Rating			
<div>113</div> Scour Assess App. Rating			
APPROVED POSTING INFORMATION		FIELD POSTING INFORMATION	
Approved Posting Category		Field Posting Category	
Ton1      Ton2      Ton3		Ton1      Ton2      Ton3	
Tonnage Values for Posting Sign		Tonnage Values for Posting Sign	
General Text for Posting Sign		General Text for Posting Sign	

Design\_No = A0701





		Missouri Department of Transportation			January 16, 2025	
		State Bridge Inspection Report			10:41:33AM	
COUNTY: BUCHANAN		DISTRICT: NW		CLASS: STATBR	FED-ID: 509	BRIDGE: A0701
***STRUCTURE POSTING***						
APPROVED CATEGORY: S-C3		WEIGHT LIMIT 45 TONS.				
Ton 1: 45		Ton 2:		Ton 3:		
COMMENTS:						
FIELD CATEGORY: S-C3		WEIGHT LIMIT 45 TONS.				
Ton 1: 45		Ton 2:		Ton 3:	PROBLEM:	PROBLEM DIRECTION:
COMMENTS:						
***GENERAL COMMENTS/MAJOR RATED ITEMS***						
GENERAL COMMENTS: (BOWDEJ1, 03/06/2008)--(47'-68'-68'-47') CONT I-BM SPANS						
[ITEM 58] DECK: 3-SERIOUS CONDITION		COMMENTS: (MENEET, 10/01/2012)--SATURATION SPAN 4				
RATING : 09/10/2020		(STEPHS2, 09/10/2020)--T CRACKS EFF THROUGHOUT				
[ITEM 59] SUPER: 5-FAIR CONDITION		COMMENTS: (MENDER1, 08/17/2018)--GIRDER ENDS RUSTING				
RATING : 07/13/2022		(ACTONB1, 07/13/2022)--MODERATE SECTION LOSS SPANS 1 & 2				
[ITEM 60] SUB: 6-SATISFACTORY CONDITION		COMMENTS: (MENEET, 10/01/2012)--SPALLS & CRACKS AT ABUTMENTS				
RATING : 10/01/2012						
[ITEM 61] BANK/CHANNEL: N-NOT APPLIC NO WATRWAY		COMMENTS:				
RATING : 05/18/2001						
[ITEM 113] SCOUR: N-NOT APPLIC NOT WATERW		COMMENTS:				
RATING : 05/18/2001						
EVALUATION TYPE :						
[ITEM 71] WATERWAY ADEQUACY: NOT APPLICABLE		COMMENTS:				
RATING : 05/18/2001						
[ITEM 72] APPRRDWY ALIGNMENT: 8-VERYGOOD		COMMENTS:				
RATING : 05/18/2001						
***RAILING AND APPROACH PAVEMENT COMPONENTS AND RATINGS***						
[ITEM 36A] BRIDGE RAILING RATING: NOT PROVIDED-0		RATING : 05/18/2001		COMMENTS:		
<u>MATERIAL</u>	<u>CONSTRUCTION</u>	<u>DIRECTION</u>	<u>COMMENTS</u>			
REINFORCED CONCRETE	CURB	BOTH				
<u>CONDITION</u>	<u>LOCATION 1</u>	<u>LOCATION 2</u>	<u>SEVERITY</u>	<u>COMMENT</u>		
HIGH STEEL SPALLS	THROUGHOUT		MANY			
ALUMINUM	CIRCULAR TUBE	BOTH				
[ITEM 36B] TRANSITION RAILING RATING: NOT PROVIDED-0		RATING : 05/18/2001		COMMENTS:		
[ITEM 36C] APPROACH RAILING RATING: NOT PROVIDED-0		RATING : 05/18/2001		COMMENTS:		
<u>MATERIAL</u>	<u>CONSTRUCTION</u>	<u>DIRECTION</u>	<u>COMMENTS</u>			
GALVANIZED STEEL	W-BEAM	ALL				
Design_No = a0701						
Page 2						
This report contains information that is protected from disclosure by federal law, 23 USC Section 409 and the Missouri Open Records Law (Sunshine Act), Section 610.021 RSMo. Please review MoDOT's policy and procedure manual on the Sunshine Act before releasing any of the information contained herein.						

		Missouri Department of Transportation				January 16, 2025	
		State Bridge Inspection Report				10:41:33AM	
COUNTY: BUCHANAN		DISTRICT: NW		CLASS: STATBR		FED-ID: 509	
				BRIDGE: A0701			
[ITEM 36D] RAIL END TREATMENT RATING: NOT PROVIDED-0							
RATING : 05/18/2001		COMMENTS:					
<u>MATERIAL</u>		<u>CONSTRUCTION</u>		<u>DIRECTION</u>		<u>COMMENTS</u>	
GALVANIZED STEEL		OTHER		(REHAGM, 02/28/2005)--BLUNT END			
APPROACH PAVEMENT: *Overall condition assigned for each approach pavemenet component is shown below.							
<u>MATERIAL</u>		<u>CONSTRUCTION</u>		<u>DIRECTION</u>		<u>CONDITION*</u>	
REINFORCED CONCRETE		SLAB		BOTH		FAIR	
<u>CONDITION</u>		<u>LOCATION 1</u>		<u>LOCATION 2</u>		<u>SEVERITY</u>	
BREAKING UP		AT ABUTMENTS		NOT APPLICABLE		<u>COMMENT</u>	
***DRAINAGE, EXPANSION DEVICES, BANK/SLOPE, AND DECK PROTECTIVE COMPONENTS***							
DECK PROTECTIVE COMPONENTS:							
<u>SERIES TYPE-#</u>		<u>COMPONENT</u>		<u>MATERIAL</u>		<u>CONSTRUCTION</u>	
MAIN SERIES-1		WEARING SURFACE		ASPHALT		BITUMINOUS SEAL COAT	
<u>THICKNESS</u>		<u>YEAR APPLIED</u>		<u>MANUFACTURE</u>		<u>OVERALL CONDITION</u>	
.3 IN						POOR	
<u>COMMENT:</u> (STEPHS2, 09/10/2020)--MOSTLY CGONE. CHIP SEAL							
<u>CONDITION</u>		<u>LOCATION 1</u>		<u>LOCATION 2</u>		<u>SEVERITY</u>	
DEBONDING		THROUGHOUT				SEVERE	
<u>COMMENT:</u>		<u>COMMENT:</u>		<u>COMMENT:</u>		<u>COMMENT:</u>	
DECK PROTECTION		NOTAPPLICABLE		NONE			
MEMBRANE		NOTAPPLICABLE		NONE			
DRAINAGE COMPONENTS:							
<u>COMPONENT</u>		<u>MATERIAL</u>		<u>CONSTRUCTION</u>		<u>DIRECTION</u>	
DRAINAGE		REINFORCED CONCRETE		DRAIN BASIN-END BENT			
EXPANSION DEVICE COMPONENTS:							
<u>SUB UNIT-#</u>		<u>SUB LABEL</u>		<u>COMPONENT</u>		<u>MATERIAL</u>	
ABUTMENT-1		CLOSED EXPANSION JOINT		STEEL		CONSTRUCTION	
<u>COMMENT:</u>		<u>COMMENT:</u>		<u>COMMENT:</u>		<u>COMMENT:</u>	
ABUTMENT-5		CLOSED EXPANSION JOINT		STEEL		FLAT PLATE	
<u>COMMENT:</u>		<u>COMMENT:</u>		<u>COMMENT:</u>		<u>COMMENT:</u>	
BANK/SLOPE PROTECTION COMPONENTS:							
<u>COMPONENT</u>		<u>MATERIAL</u>		<u>CONSTRUCTION</u>		<u>DIRECTION</u>	
BANK PROTECTION		ROCK		BLANKET		BOTH	
***DECK COMPONENTS***							
<u>SPAN TYPE-#</u>		<u>COMPONENT</u>		<u>MATERIAL</u>		<u>CONSTRUCTION</u>	
MAIN SPANS-1		DECK		REINFORCED CONCRETE		CAST-IN-PLACE	
<u>CONDITION</u>		<u>LOCATION 1</u>		<u>LOCATION 2</u>		<u>SEVERITY</u>	
DELAMINATION		DRIVING SURFACE				MODERATE	
EFFLORESCENCE		THROUGHOUT				MODERATE	
PATCHES		THROUGHOUT				MANY	
SATURATION		THROUGHOUT				HEAVY	
<u>MEASUREMENT</u>		<u>COMMENT</u>		<u>COMMENT</u>		<u>COMMENT</u>	
80 %							
Design_No = a0701							
Page 3							
This report contains information that is protected from disclosure by federal law, 23 USC Section 409 and the Missouri Open Records Law (Sunshine Act), Section 610.021 RSMo. Please review MoDOT's policy and procedure manual on the Sunshine Act before releasing any of the information contained herein.							





**COUNTY: BUCHANAN**

**DISTRICT: NW**


**CLASS: STATBR**

**FED-ID: 509**

**BRIDGE: A0701**

		SPALLS	THROUGHOUT	MANY		
		TRANSVERSE CRACKS	THROUGHOUT	MANY		
		WEAR	THROUGHOUT	MEDIUM		
MAIN SPANS-2	DECK	REINFORCED CONCRETE	CAST-IN-PLACE			
<u>CONDITION</u>		<u>LOCATION 1</u>	<u>LOCATION 2</u>	<u>SEVERITY</u>	<u>MEASUREMENT</u>	<u>COMMENT</u>
DELAMINATION		DRIVING SURFACE		MODERATE		
EFFLORESCENCE		THROUGHOUT		MODERATE		
PATCHES		THROUGHOUT		FEW		
SATURATION		THROUGHOUT		HEAVY	80 %	
SPALLS		THROUGHOUT		MANY		
TRANSVERSE CRACKS		THROUGHOUT		MANY		
WEAR		THROUGHOUT		MEDIUM		
MAIN SPANS-3	DECK	REINFORCED CONCRETE	CAST-IN-PLACE			
<u>CONDITION</u>		<u>LOCATION 1</u>	<u>LOCATION 2</u>	<u>SEVERITY</u>	<u>MEASUREMENT</u>	<u>COMMENT</u>
DELAMINATION		DRIVING SURFACE		MODERATE		
EFFLORESCENCE		THROUGHOUT		MODERATE		
PATCHES		THROUGHOUT		MANY	25 %	
SATURATION		THROUGHOUT		MODERATE	50 %	
SPALLS		THROUGHOUT		MANY		
TRANSVERSE CRACKS		THROUGHOUT		MANY		
WEAR		THROUGHOUT		MEDIUM		
MAIN SPANS-4	DECK	REINFORCED CONCRETE	CAST-IN-PLACE			
<u>CONDITION</u>		<u>LOCATION 1</u>	<u>LOCATION 2</u>	<u>SEVERITY</u>	<u>MEASUREMENT</u>	<u>COMMENT</u>
DELAMINATION		DRIVING SURFACE		MODERATE		
EFFLORESCENCE		THROUGHOUT		MODERATE		
PATCHES		THROUGHOUT		MODERATE	20 %	
SATURATION		THROUGHOUT		MODERATE	50 %	
SPALLS		THROUGHOUT		MANY		
TRANSVERSE CRACKS		THROUGHOUT		MANY		
WEAR		THROUGHOUT		MEDIUM		


***SUPERSTRUCTURE COMPONENTS***							
<u>SERIES TYPE-#</u>	<u>SPAN TYPE</u>	<u>MATERIAL</u>	<u>CONSTRUCTION</u>	<u>LABEL</u>	<u>COMMENTS</u>		
MAIN SERIES-1	CONTINUOUS SPAN	STEEL	WIDE FLANGE GIRDERS		(STEGEC, 07/05/2007)--HR5 REPAIRED COLLISION DAMAGE TO FLANGES AND CONNECTION PLATES AND REPLACED ALL BOLTS IN JUNE 2007		
<u>SPAN</u>	<u>COMPOSITE INDICATOR</u>	<u>LENGTH</u>	<u>WEATHERING STEEL</u>	<u>COMMENTS</u>			
MAIN SPANS-1	NON-COMPOSITE	48 FT 10 IN	NO				
<u>CONDITION</u>		<u>LOCATION 1</u>	<u>LOCATION 2</u>	<u>SEVERITY</u>	<u>MEASUREMENT</u>	<u>COMMENT</u>	
DECK LIFTING		TOP FLANGE		MINOR			
RUSTING		BOTTOM FLANGE		MODERATE			
SECTION LOSS		TOP FLANGE		MINOR			
MAIN SPANS-2	NON-COMPOSITE	68 FT 0 IN	NO				
<u>CONDITION</u>		<u>LOCATION 1</u>	<u>LOCATION 2</u>	<u>SEVERITY</u>	<u>MEASUREMENT</u>	<u>COMMENT</u>	
RUSTING		BOTTOM FLANGE		MODERATE			
SECTION LOSS		TOP FLANGE		MINOR			

		Missouri Department of Transportation					January 16, 2025		
		State Bridge Inspection Report					10:41:33AM		
COUNTY: BUCHANAN		DISTRICT: NW		CLASS: STATBR		FED-ID: 509		BRIDGE: A0701	
MAIN SPANS-3		NON-COMPOSITE		68 FT 0 IN		NO			
<u>CONDITION</u>		<u>LOCATION 1</u>		<u>LOCATION 2</u>		<u>SEVERITY</u>		<u>MEASUREMENT</u>	
RUSTING		BOTTOM FLANGE				MODERATE			
SECTION LOSS		TOP FLANGE				MINOR			
MAIN SPANS-4		NON-COMPOSITE		48 FT 10 IN		NO			
<u>CONDITION</u>		<u>LOCATION 1</u>		<u>LOCATION 2</u>		<u>SEVERITY</u>		<u>MEASUREMENT</u>	
DECK LIFTING		TOP FLANGE				MINOR			
RUST		GIRDER ENDS				MINOR			
RUSTING		BOTTOM FLANGE				MODERATE			
SECTION LOSS		TOP FLANGE				MINOR			
***SUBSTRUCTURE COMPONENTS***									
<u>SUBSTRUCTURE</u>	<u>SKEW</u>	<u>LENGTH</u>	<u>MATERIAL</u>	<u>CONSTRUCTION</u>	<u>LABEL</u>	<u>COMMENTS</u>			
ABUTMENT-1	RA-15 DEGREES	33 FT 3 IN	REINFORCED CONCRETE	NON-INTEGRAL					
	<u>CONDITION</u>		<u>LOCATION 1</u>	<u>LOCATION 2</u>		<u>SEVERITY</u>	<u>MEASUREMENT</u>	<u>COMMENT</u>	
<u>ASSOCIATED COMPONENT</u>			<u>MATERIAL</u>	<u>CONSTRUCTION</u>					
BEAM CAP			REINFORCED CONCRETE	CAST-IN-PLACE					
	<u>CONDITION</u>		<u>LOCATION 1</u>	<u>LOCATION 2</u>		<u>SEVERITY</u>	<u>MEASUREMENT</u>	<u>COMMENT</u>	
	HORIZONTAL CRACKS		THROUGHOUT			LARGE			
PILING			REINFORCED CONCRETE	CAST-IN-PLACE					
	<u>CONDITION</u>		<u>LOCATION 1</u>	<u>LOCATION 2</u>		<u>SEVERITY</u>	<u>MEASUREMENT</u>	<u>COMMENT</u>	
STRAIGHT WINGS			REINFORCED CONCRETE	CAST-IN-PLACE					
	<u>CONDITION</u>		<u>LOCATION 1</u>	<u>LOCATION 2</u>		<u>SEVERITY</u>	<u>MEASUREMENT</u>	<u>COMMENT</u>	
BACKWALL			REINFORCED CONCRETE	CAST-IN-PLACE					
	<u>CONDITION</u>		<u>LOCATION 1</u>	<u>LOCATION 2</u>		<u>SEVERITY</u>	<u>MEASUREMENT</u>	<u>COMMENT</u>	
	SHOVING		THROUGHOUT			MODERATE			
	SPALLS		TOP			LARGE			
	VERTICAL CRACKS		THROUGHOUT			FEW			
EXPANSION BEARING			STEEL	ROCKER					
	<u>CONDITION</u>		<u>LOCATION 1</u>	<u>LOCATION 2</u>		<u>SEVERITY</u>	<u>MEASUREMENT</u>	<u>COMMENT</u>	
	RUSTING		THROUGHOUT			HEAVY			
BENT-2	RA-15 DEGREES	26 FT 3 IN	REINFORCED CONCRETE	MULTIPLE COLUMN					
	<u>CONDITION</u>		<u>LOCATION 1</u>	<u>LOCATION 2</u>		<u>SEVERITY</u>	<u>MEASUREMENT</u>	<u>COMMENT</u>	
<u>ASSOCIATED COMPONENT</u>			<u>MATERIAL</u>	<u>CONSTRUCTION</u>					
BEAM CAP			REINFORCED CONCRETE	CAST-IN-PLACE					
	<u>CONDITION</u>		<u>LOCATION 1</u>	<u>LOCATION 2</u>		<u>SEVERITY</u>	<u>MEASUREMENT</u>	<u>COMMENT</u>	
COLUMN			REINFORCED CONCRETE	CAST-IN-PLACE					
	<u>CONDITION</u>		<u>LOCATION 1</u>	<u>LOCATION 2</u>		<u>SEVERITY</u>	<u>MEASUREMENT</u>	<u>COMMENT</u>	
FOOTING			REINFORCED CONCRETE	CAST IN PLACE PILE					
	<u>CONDITION</u>		<u>LOCATION 1</u>	<u>LOCATION 2</u>		<u>SEVERITY</u>	<u>MEASUREMENT</u>	<u>COMMENT</u>	
EXPANSION BEARING			STEEL	ROCKER					
	<u>CONDITION</u>		<u>LOCATION 1</u>	<u>LOCATION 2</u>		<u>SEVERITY</u>	<u>MEASUREMENT</u>	<u>COMMENT</u>	
BENT-3	RA-15 DEGREES	26 FT 3 IN	REINFORCED CONCRETE	MULTIPLE COLUMN					
	<u>CONDITION</u>		<u>LOCATION 1</u>	<u>LOCATION 2</u>		<u>SEVERITY</u>	<u>MEASUREMENT</u>	<u>COMMENT</u>	
<u>ASSOCIATED COMPONENT</u>			<u>MATERIAL</u>	<u>CONSTRUCTION</u>					
BEAM CAP			REINFORCED CONCRETE	CAST-IN-PLACE					
	<u>CONDITION</u>		<u>LOCATION 1</u>	<u>LOCATION 2</u>		<u>SEVERITY</u>	<u>MEASUREMENT</u>	<u>COMMENT</u>	


Design\_No = a0701


Page 5

This report contains information that is protected from disclosure by federal law, 23 USC Section 409 and the Missouri Open Records Law (Sunshine Act), Section 610.021 RSMo. Please review MoDOT's policy and procedure manual on the Sunshine Act before releasing any of the information contained herein.

		Missouri Department of Transportation					January 16, 2025		
		State Bridge Inspection Report					10:41:33AM		
COUNTY: BUCHANAN			DISTRICT: NW		CLASS: STATBR		FED-ID: 509	BRIDGE: A0701	
COLUMN	<u>CONDITION</u>		REINFORCED CONCRETE		CAST-IN-PLACE		<u>SEVERITY</u>	<u>MEASUREMENT</u>	<u>COMMENT</u>
			<u>LOCATION 1</u>		<u>LOCATION 2</u>				
FOOTING	<u>CONDITION</u>		REINFORCED CONCRETE		CAST IN PLACE PILE		<u>SEVERITY</u>	<u>MEASUREMENT</u>	<u>COMMENT</u>
			<u>LOCATION 1</u>		<u>LOCATION 2</u>				
FIXED BEARING	<u>CONDITION</u>		STEEL		PEDESTAL(ROTATING)		<u>SEVERITY</u>	<u>MEASUREMENT</u>	<u>COMMENT</u>
			<u>LOCATION 1</u>		<u>LOCATION 2</u>				
BENT-4	RA-15 DEGREES	26 FT 3 IN	REINFORCED CONCRETE		MULTIPLE COLUMN				
	<u>CONDITION</u>		<u>LOCATION 1</u>		<u>LOCATION 2</u>		<u>SEVERITY</u>	<u>MEASUREMENT</u>	<u>COMMENT</u>
<u>ASSOCIATED COMPONENT</u>			<u>MATERIAL</u>		<u>CONSTRUCTION</u>				
BEAM CAP	<u>CONDITION</u>		REINFORCED CONCRETE		CAST-IN-PLACE		<u>SEVERITY</u>	<u>MEASUREMENT</u>	<u>COMMENT</u>
			<u>LOCATION 1</u>		<u>LOCATION 2</u>				
COLUMN	<u>CONDITION</u>		REINFORCED CONCRETE		CAST-IN-PLACE		<u>SEVERITY</u>	<u>MEASUREMENT</u>	<u>COMMENT</u>
			<u>LOCATION 1</u>		<u>LOCATION 2</u>				
	SPALLS		RANDOM				MODERATE		
FOOTING	<u>CONDITION</u>		REINFORCED CONCRETE		CAST IN PLACE PILE		<u>SEVERITY</u>	<u>MEASUREMENT</u>	<u>COMMENT</u>
			<u>LOCATION 1</u>		<u>LOCATION 2</u>				
EXPANSION BEARING	<u>CONDITION</u>		STEEL		ROCKER		<u>SEVERITY</u>	<u>MEASUREMENT</u>	<u>COMMENT</u>
			<u>LOCATION 1</u>		<u>LOCATION 2</u>				
ABUTMENT-5	RA-15 DEGREES	33 FT 3 IN	REINFORCED CONCRETE		NON-INTEGRAL				
	<u>CONDITION</u>		<u>LOCATION 1</u>		<u>LOCATION 2</u>		<u>SEVERITY</u>	<u>MEASUREMENT</u>	<u>COMMENT</u>
<u>ASSOCIATED COMPONENT</u>			<u>MATERIAL</u>		<u>CONSTRUCTION</u>				
BEAM CAP	<u>CONDITION</u>		REINFORCED CONCRETE		CAST-IN-PLACE		<u>SEVERITY</u>	<u>MEASUREMENT</u>	<u>COMMENT</u>
			<u>LOCATION 1</u>		<u>LOCATION 2</u>				
	HORIZONTAL CRACKS		THROUGHOUT				MEDIUM		
	SPALLS		THROUGHOUT				MEDIUM		
PILING	<u>CONDITION</u>		REINFORCED CONCRETE		CAST-IN-PLACE		<u>SEVERITY</u>	<u>MEASUREMENT</u>	<u>COMMENT</u>
			<u>LOCATION 1</u>		<u>LOCATION 2</u>				
STRAIGHT WINGS	<u>CONDITION</u>		REINFORCED CONCRETE		CAST-IN-PLACE		<u>SEVERITY</u>	<u>MEASUREMENT</u>	<u>COMMENT</u>
			<u>LOCATION 1</u>		<u>LOCATION 2</u>				
BACKWALL	<u>CONDITION</u>		REINFORCED CONCRETE		CAST-IN-PLACE		<u>SEVERITY</u>	<u>MEASUREMENT</u>	<u>COMMENT</u>
			<u>LOCATION 1</u>		<u>LOCATION 2</u>				
	DETERIORATION		TOP				MODERATE		
	LEACHING		TOP				MODERATE		
EXPANSION BEARING	<u>CONDITION</u>		STEEL		ROCKER		<u>SEVERITY</u>	<u>MEASUREMENT</u>	<u>COMMENT</u>
			<u>LOCATION 1</u>		<u>LOCATION 2</u>				
	PACK RUST		AT BEARING				HEAVY		
***OVER/UNDER ROUTES CLEARANCE INFORMATION***									
<u>CLEARANCES OVER DECK</u>									
**NOTE: Vertical clearances for permitting purposes are taken as 2 inches less than the actual field measured clearance.									
<u>VERTICAL CLEARANCE TYPE**</u>		<u>VALUE</u>	<u>DIRECTION</u>	<u>DATE</u>	<u>COMMENT</u>				



		<div>Missouri Department of Transportation</div> <div>State Bridge Inspection Report</div>				<div>January 16, 2025</div> <div>10:41:33AM</div>			
COUNTY: BUCHANAN		DISTRICT: NW		CLASS: STATBR		FED-ID: 509		BRIDGE: A0701	
<b><u>CLEARANCES UNDER BRIDGE</u></b>		**NOTE: Vertical clearances for permitting purposes are taken as 2 inches less than the actual field measured clearance.							
<b><u>RECORD #</u></b>	<b><u>ROUTE</u></b>	<b><u># LANES</u></b>	<b><u>DIRECTION OF TRAFFIC</u></b>		<b><u>RIGHT LATERAL CLEARANCE</u></b>	<b><u>LEFT LATERAL CLEARANCE</u></b>		<b><u>UR-ID</u></b>	
1	IS 29 S	2	1-WAY TRAF		11 FT 0 IN	28 FT 10 IN		1190	
<b><u>VERTICAL CLEARANCE TYPE**</u></b>		<b><u>VALUE</u></b>	<b><u>DIRECTION</u></b>	<b><u>DATE</u></b>	<b><u>COMMENT</u></b>				
ACTUAL		15 FT 9 IN		10/03/2023					
<b><u>RECORD #</u></b>	<b><u>ROUTE</u></b>	<b><u># LANES</u></b>	<b><u>DIRECTION OF TRAFFIC</u></b>		<b><u>RIGHT LATERAL CLEARANCE</u></b>	<b><u>LEFT LATERAL CLEARANCE</u></b>		<b><u>UR-ID</u></b>	
2	IS 29 N	2	1-WAY TRAF		11 FT 0 IN	28 FT 10 IN		1191	
<b><u>VERTICAL CLEARANCE TYPE**</u></b>		<b><u>VALUE</u></b>	<b><u>DIRECTION</u></b>	<b><u>DATE</u></b>	<b><u>COMMENT</u></b>				
ACTUAL		16 FT 1 IN		08/26/2023					
***STRUCTURE PAINT INFORMATION***									
CONDITION: FAIR		RUST AMOUNT : 4=10% OF SURFACE RUSTED			STEEL TONS : 67				
<b><u>ORIGINAL PAINT</u></b>			<b><u>CONTRACT REPAINT</u></b>			<b><u>DEPARTMENT REPAINT</u></b>			
PAINT TYPE : A SYSTEM			PAINT TYPE :			PAINT TYPE : S SYSTEM		MANUFACTURE :	
NAME : RED LEAD			NAME :			NAME : CAL SULPH/LEAD PAINT		SURFACE PREP :	
PAINT COLOR :			PAINT COLOR :			PAINT COLOR : GREEN			
PAINT YEAR : 1963			PAINT YEAR :			PAINT YEAR : 1995			
MILS :			MILS :			MILS : 8			
***REQUESTED WORK ITEMS***									
GENERAL WORK COMMENTS:									
<i>RESPONSIBILITY</i>		<i>LOCATION</i>		<i>ITEM</i>		<i>CATEGORY</i>	<i>PRIORITY</i>	<i>DATE</i>	<i>WORK ITEM COMMENT</i>
***UTILITY ATTACHMENTS***									
<i>UTILITY</i>		<i>OWNER</i>		<i>METHOD</i>		<i>MEASUREMENT TYPE</i>	<i>VALUE</i>	<i>NUMBER</i>	<i>UTILITY ATTACHMENT COMMENT</i>
***PROGRAM NOTES INFORMATION***									
<b><u>YEAR</u></b>	<b><u>PROJECT #</u></b>	<b><u>MONTH LET</u></b>	<b><u>YEAR LET</u></b>	<b><u>ITEMS</u></b>	<b><u>COMMENT</u></b>				
Design_No = a0701									
Page 7									
This report contains information that is protected from disclosure by federal law, 23 USC Section 409 and the Missouri Open Records Law (Sunshine Act), Section 610.021 RSMo. Please review MoDOT's policy and procedure manual on the Sunshine Act before releasing any of the information contained herein.									

			<b>Missouri Department of Transportation</b>		<b>January 16, 2025</b>																																											
			<b>State Bridge Inspection Report</b>		<b>10:41:33AM</b>																																											
<b>COUNTY: BUCHANAN</b>			<b>DISTRICT: NW</b>		<b>CLASS: STATBR</b>																																											
			<b>FED-ID: 509</b>		<b>BRIDGE: A0701</b>																																											
<b>***COMPUTER GENERATED RATINGS AND DEFICIENCY ITEMS***</b>						<b>***ADVANCED SIGN INFORMATION***</b>																																										
<div>NOTE: The items listed in this section are updated whenever computer edits are ran on a structure after the inspection updates have been entered in to TMS.</div> <table><tr><td><u>Rated Item</u></td><td><u>Rating</u></td><td><u>Rating Date</u></td></tr><tr><td>[Item 67] Structure Evaluation Rating:</td><td>4-MEETS MINIMUM TOLERABLE</td><td>5/18/2001</td></tr><tr><td>[Item 68] Deck Geometry Rating:</td><td>2-BASICALLY INTOLRBLE REQ</td><td>1/19/2005</td></tr><tr><td>[Item 69] Underclearance:</td><td>5-BETTER THAN MINIMUM</td><td>1/24/2022</td></tr><tr><td>Sufficiency Rating:</td><td>38.6%</td><td>3/7/2024</td></tr><tr><td>Deficiency:</td><td>STRUCTURAL</td><td>1/31/2013</td></tr><tr><td>Funding Eligibility:</td><td>FULL</td><td>----</td></tr><tr><td>Estimated New Structure Length:</td><td>269 FT.</td><td>----</td></tr><tr><td>Estimated Structure Cost:</td><td>\$1,721,331</td><td>----</td></tr><tr><td>Estimated Total Project Cost:</td><td>\$2,581,997</td><td>----</td></tr><tr><td>Year of Cost Estimate:</td><td>2024</td><td>----</td></tr></table> <div>NOTE: The above structure length and cost estimates are computer generated using algorithms in the TMS system. These algorithms are generalized to use NBI items to come up with a new structure length and width to calculate a new area which is taken times a representative cost per square foot. The actual structure size and cost may vary significantly from these numbers once site specific engineering is done.</div>						<u>Rated Item</u>	<u>Rating</u>	<u>Rating Date</u>	[Item 67] Structure Evaluation Rating:	4-MEETS MINIMUM TOLERABLE	5/18/2001	[Item 68] Deck Geometry Rating:	2-BASICALLY INTOLRBLE REQ	1/19/2005	[Item 69] Underclearance:	5-BETTER THAN MINIMUM	1/24/2022	Sufficiency Rating:	38.6%	3/7/2024	Deficiency:	STRUCTURAL	1/31/2013	Funding Eligibility:	FULL	----	Estimated New Structure Length:	269 FT.	----	Estimated Structure Cost:	\$1,721,331	----	Estimated Total Project Cost:	\$2,581,997	----	Year of Cost Estimate:	2024	----	<table><tr><td><b>SIGN #</b></td><td><b>SIGN TYPE</b></td><td><b>PROBLEM</b></td><td><b>PROBLEM DIRECTION</b></td></tr><tr><td>1</td><td></td><td></td><td></td></tr></table>		<b>SIGN #</b>	<b>SIGN TYPE</b>	<b>PROBLEM</b>	<b>PROBLEM DIRECTION</b>	1			
<u>Rated Item</u>	<u>Rating</u>	<u>Rating Date</u>																																														
[Item 67] Structure Evaluation Rating:	4-MEETS MINIMUM TOLERABLE	5/18/2001																																														
[Item 68] Deck Geometry Rating:	2-BASICALLY INTOLRBLE REQ	1/19/2005																																														
[Item 69] Underclearance:	5-BETTER THAN MINIMUM	1/24/2022																																														
Sufficiency Rating:	38.6%	3/7/2024																																														
Deficiency:	STRUCTURAL	1/31/2013																																														
Funding Eligibility:	FULL	----																																														
Estimated New Structure Length:	269 FT.	----																																														
Estimated Structure Cost:	\$1,721,331	----																																														
Estimated Total Project Cost:	\$2,581,997	----																																														
Year of Cost Estimate:	2024	----																																														
<b>SIGN #</b>	<b>SIGN TYPE</b>	<b>PROBLEM</b>	<b>PROBLEM DIRECTION</b>																																													
1																																																
						<b>***OUTFALL INSPECTION INFORMATION***</b>																																										
						<table><tr><td><b># OUTFALLS:</b> 1</td><td><b>INSPECTOR:</b> SCOTT STEPHENS</td></tr><tr><td><b>STATUS:</b> PASS</td><td><b>DATE:</b> 08/07/2018</td></tr><tr><td><b>NOTES:</b> NW DITCH PAVED</td><td></td></tr></table>		<b># OUTFALLS:</b> 1	<b>INSPECTOR:</b> SCOTT STEPHENS	<b>STATUS:</b> PASS	<b>DATE:</b> 08/07/2018	<b>NOTES:</b> NW DITCH PAVED																																				
<b># OUTFALLS:</b> 1	<b>INSPECTOR:</b> SCOTT STEPHENS																																															
<b>STATUS:</b> PASS	<b>DATE:</b> 08/07/2018																																															
<b>NOTES:</b> NW DITCH PAVED																																																