



Missouri Department of Transportation
Bridge Inventory and Inspection System
Structural Inventory & Appraisal Sheet

December 9, 2024
7:15:18am

COUNTY : HOWELL BRIDGE : P0797 REVIEW STATUS : APPROVED NBI STATUS : T
RECORD TYPE : ROUTE CARRIED 'ON' STRUCT RUN DATE : 12/6/2024 SUBMITTAL YEAR : 2024

GENERAL STRUCTURE INFORMATION			ROUTE DESIGNATION INFORMATION		
1	State	MISSOURI	5A	Record Type	ROUTE CARRIED 'ON' STRUCT
2	District	SE	5B	Route Signing Prefix	MO
3	County	HOWELL	5C	Designated Level of Service	MAINLINE
8	Federal ID No.	7897	5D	Route Number	000JJ
27	Year Built	1955	5E	Directional Suffix	NOT APPLICABLE
106	Year Reconstructed	0	7	Facility Carried	RT JJ S
42A	Type of Service On	HIGHWAY	12	Base Hwy. Network	NO
21	Structure Maintenance	STATE HIGHWAY AGENCY	13A	LRS Inventory Route No.	
22	Structure Owner	STATE HIGHWAY AGENCY	13B	Subroute No.	
33	Br. Median Code	NO MEDIAN	20	Toll Status	ON FREE ROAD
37	Historical Significance	NOT ELIGIBLE FOR NR OF HP	26	Functional Classification	07-RURAL MAJOR COLLECTOR
101	Parallel Struc Desg	NONE EXISTS	28A	Lanes on Structure	01
103	Temporary Structure	NOT TEMPORARY	100	STRAHNET Designation	RTE NOT A DEFENSE HWY
112	NBIS Bridge Length	YES	104	National Highway System	NOT ON NHS
			105	Federal Lands Highway	NOT APPLICABLE
			110	Designated Nat. Network	NO
STRUCTURE LOCATION INFORMATION			STRUCTURE TRAFFIC INFORMATION		
4	Place	SOUTH FORK	29	AADT	1819
	Code	68780	30	AADT Year	2023
9	Location	S 31 T 23 N R 8 W	102	Direction of Traffic	ONE LANE BRIDGE FOR 2-WAY
11	Milepoint	4.06 miles	109	AADT Truck Percent	5%
16	Latitude	36 D 37 M 17 S	114	Future AADT	2729
17	Longitude	91 D 53 M 58 S	115	Future AADT Year	2043
UNDERRECORD INFORMATION			STRUCTURE GEOMETRIC INFORMATION		
6	Features Intersected	S FK SPRING RVR	10	Inventory Rte. Vert. Clear	99 Ft. 99 In.
42B	Type of Service Under	WATERWAY	19	By pass Detour Length	30.00 miles
28B	Lanes Under Structure	00	32	Approach Roadway Width	20 Ft. 0 In.
54A	Vert. Clearance Ref.	N/A	34	Skew	0.00 Degrees
54B	Vert. Clearance	0 Ft. 0 In.	35	Struct. Flared	NO
55A	Rt. Lat Clear Ref.	N/A	47	Total Horiz. Clear	20 Ft. 0 In.
55B	Rt. Lat Clearance	0 Ft. 0 In.	48	Maximum Span Length	52 Ft. 6 In.
56	Left Lat Clearance	0 Ft. 0 In.	49	Structure Length	127 Ft. 11 In.
38	Navigation Control	PERMIT NOT REQ	50A	Left Curb/Sidewalk Width	0 Ft. 0 In.
39	Nav Vertical Clear	0 Ft. 0 In.	50B	Right Curb/Sidewalk Width	0 Ft. 0 In.
40	Nav Horizontal Clear	0 Ft. 0 In.	51	Curb to Curb Br. Width	20 Ft. 0 In.
111	Nav. Pier Protection		52	Deck Width (Out-Out)	23 Ft. 4 In.
116	Nav. Cl. Vert. Clear		53	Vert. Clearance Over Deck	99 Ft. 99 In.

Design_No = P0797 and Inventory_Appraisal_Submittal_Year = 2024




Missouri Department of Transportation
Bridge Inventory and Inspection System
Structural Inventory & Appraisal Sheet


December 9, 2024
7:15:18am

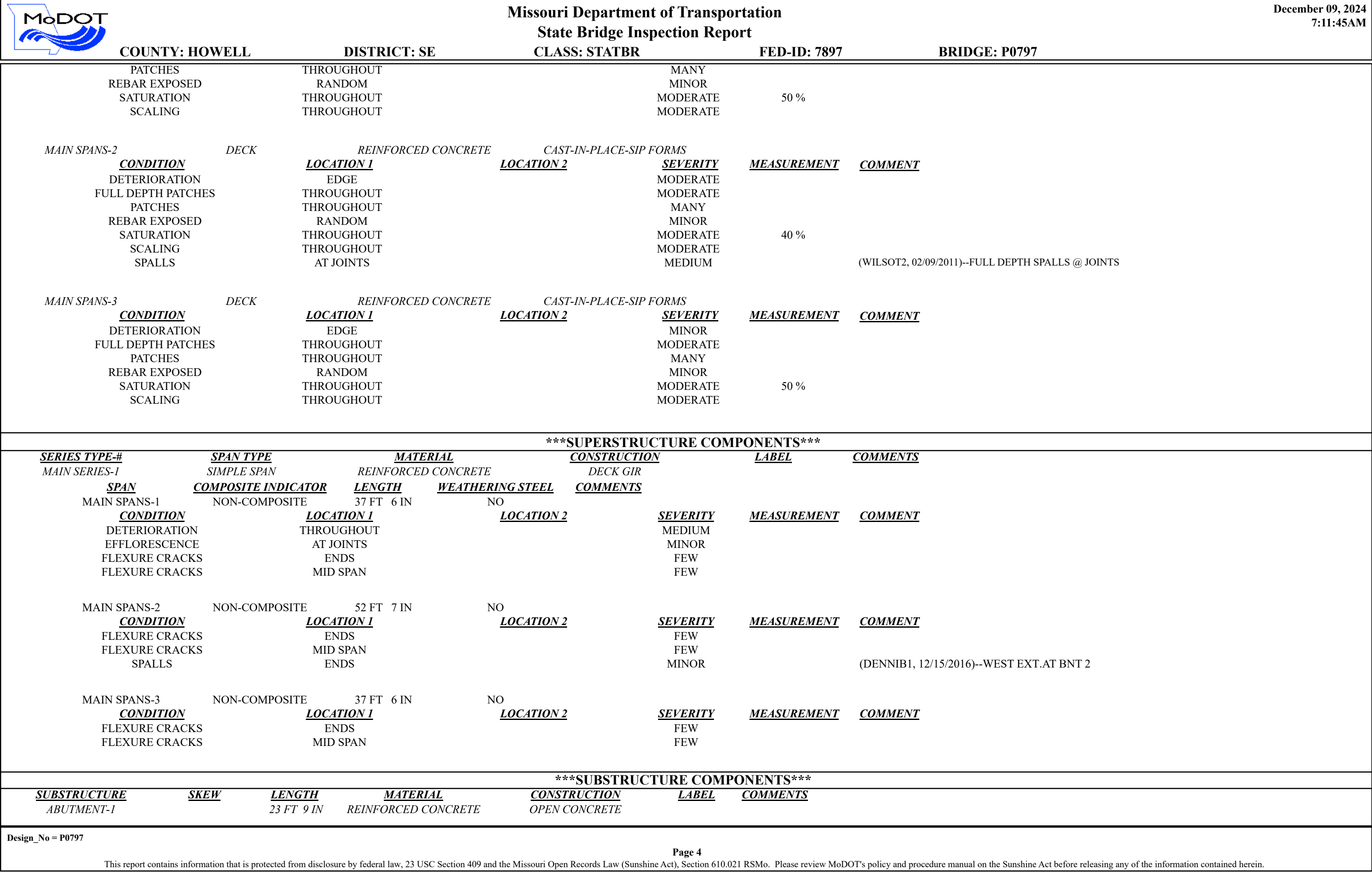
COUNTY : HOWELL BRIDGE : P0797 REVIEW STATUS : APPROVED NBI STATUS : T
RECORD TYPE : ROUTE CARRIED 'ON' STRUCT RUN DATE : 12/6/2024 SUBMITTAL YEAR : 2024


LOAD RATING AND POSTING INFORMATION			MATERIAL/CONSTRUCTION INFORMATION			
31	Design Load	H 10	43A	Main Struc. Mat type	CONCRETE	
41	Structure Status	POSTED FOR LOAD	43B	Main struc Constr. Type	TEE BEAM	
63	Oper. Rating Meth.	LOAD FACTOR	45	# of Main Spans	3	
64	Operating Rating	21 Tons.	44A	Appr Struc. Mat type	000	
65	Inventory Rating Meth	LOAD FACTOR	44B	Appr Struc. Cnstr. type	000	
66	Inventory Rating	12 Tons.	46	# of Approach Span	0	
70	Bridge Posting Code	20.0-29.9% BELOW	107	Deck Mat/Constr.	1 CONCRETE CIP	
			108A	Wear Surf Mat/Constr.	6 BITUMINOUS	
			108B	Membrane Mat/Constr.	0 NONE	
			108C	Deck Protect Mat/Constr.	0 NONE	
PROPOSED IMPROVEMENT INFORMATION			CONDITION RATING INFORMATION			
	Sufficiency Rating	19.0 Percent	58	Deck Cond. Rating	4	
	Deficiency Rating	STRUCTURAL	59	Superstructure Cond. Rating	4	
	Funding Eligibility	FULL	60	Substructure Cond. Rating	5	
75A	Proposed Work	REPLACEMENT SUBSTND LOAD	61	Channel /Channel Protection Cond. Rating	6	
75B	Work Done By	Contract	62	Culvert Cond. Rating	N	
76	New Struc Length	157 Ft. 6 In.				
94	Struc Improve Cost	\$ 1,005,000	INSPECTION INFORMATION			
95	Roadway Improve Cost	\$ 100,000	90	Gen. Insp Date	12 / 24	
96	Total Project Cost	\$ 1,507,000	91	Gen. Insp. Frequency	12 Months	
97	Year of Cost Estimates	2024	92A	Frac. Critical Inspection	N Months	
			93A	Frac. Critical Insp. Date		
			92B	Underwater Inspection	N Months	
			93B	Underwater Insp. Date		
			92C	Special Inspection	N Months	
			93C	Special Inspection Date		
APPRAISAL RATING INFORMATION			BORDER BRIDGE INFORMATION			
36A	Br. Rail App. Rating	DOES NOT MEET ACCEPT STND	98	Neighboring State Code		
36B	Transition Rail App. Rating	DOES NOT MEET ACCEPT STND	98B	Neighboring State % Respon		
36C	Approach Rail App. Rating	DOES NOT MEET ACCEPT STND	99	Neighboring State Struc. No.		
36D	Rail End Treat. App. Rating	DOES NOT MEET ACCEPT STND				
67	Struc Eval App. Rating	2	APPROVED POSTING INFORMATION			
68	Deck Geometry App. Rating	2	FIELD POSTING INFORMATION			
69	Underclearance App. Rating	N	Approved Posting Category	S-5	Field Posting Category	S-5
71	Waterway Adeq. App. Rating	8		Ton1 Ton2 Ton3		Ton1 Ton2 Ton3
72	Approach Road App. Rating	6	Tonnage Values for Posting Sign	19	Tonnage Values for Posting Sign	19
113	Scour Assess App. Rating	8	General Text for Posting Sign		General Text for Posting Sign	
			CENTERLINE OF BRIDGE AND TRUCKS OVER 19 TONS 15 MPH ON BRIDGE.		CENTERLINE OF BRIDGE AND TRUCKS OVER 19 TONS 15 MPH ON BRIDGE.	

Design_No = P0797 and Inventory_Appraisal_Submittal_Year = 2024

		<div>Missouri Department of Transportation</div> <div>State Bridge Inspection Report</div>				<div>December 09, 2024</div> <div>7:11:45AM</div>			
COUNTY: HOWELL		DISTRICT: SE		CLASS: STATBR		FED-ID: 7897		BRIDGE: P0797	
GENERAL STRUCTURE INFORMATION							***BRIDGE INSPECTION INFORMATION***		
<div>ROUTE: RTJJS</div> <div>FEATURE: S FK SPRING RVR</div> <div>STATUS: P-POSTLOAD</div> <div>LOG MILE: 4.036</div> <div>DETOUR: 30.00 MILES</div> <div>NHS: NO</div> <div>BUILT: 1955</div> <div>REHAB:</div> <div>LOCATION: S 31 T 23 R 8 W</div> <div>LATITUDE: 36 37 17.43 (DMS)</div> <div>LONGITUDE: 91 53 57.51 (DMS)</div>		<div># SPANS: 3</div> <div>LANES ON: 1</div> <div>LANES UNDER: 0</div> <div>COMPASS DIRECTION: NORTH to SOUTH</div> <div>DIRECTION OF TRAFFIC: 1-LN/2-WAY</div> <div>FUNCTIONAL CLASS: RL-MAJOR COLLECTOR</div> <div>NBI OWNER: MODOT</div> <div>NBI MAINTAINED: MODOT</div> <div>MAINTENANCE DISTRICT: SE</div> <div>MAINTENANCE COUNTY: HOWELL</div> <div>SUB AREA: 7H50</div>		<div>PLACE CODE: 68780 SOUTH FORK</div> <div>LENGTH: 128 FT 0 IN</div> <div>MAXIMUM SPAN: 52 FT 7 IN</div> <div>APPROACH ROADWAY: 20 FT 0 IN</div> <div>CURB TO CURB: 20 FT 0 IN</div> <div>OUT TO OUT: 23 FT 4 IN</div> <div>AADT: 1819</div> <div>AADT YEAR: 2023</div> <div>AADT TRUCK: 4.5%</div> <div>FUTURE AADT: 2729</div> <div>FUTURE AADT YEAR: 2043</div>		<div>DATE: 12/03/2024</div> <div>RESPONSIBILITY: DISTRICT</div> <div>FREQUENCY: 12</div> <div>CALCULATED INTERVAL**: 12</div> <div>TEAM LEADER: MELANIE RICKARD-ELMOI</div> <div>ELEMENT: NO</div> <div>INSPECTOR 2:</div> <div>INSPECTOR 4:</div> <div>INSPECTOR 3:</div> <div>** When calculated interval exceeds the frequency, a justification comment per BIRM is required.</div>			
						GENERAL INSPECTION COMMENTS			
FRACTURE CRITICAL INSPECTION INFORMATION					***INDEPTH INSPECTION INFORMATION***				
<div>DATE:</div> <div>FREQUENCY:</div> <div>TEAM LEADER:</div> <div>INSPECTOR 2:</div> <div>** When calculated interval exceeds the frequency, a justification comment per BIRM is required.</div>					<div>RESPONSIBILITY:</div> <div>CALCULATED INTERVAL**:</div> <div>INSPECTOR 3:</div> <div>INSPECTOR 4:</div> <div>CATEGORY:</div> <div>NBI:</div> <div>METHOD:</div> <div>** When calculated interval exceeds the frequency, a justification comment per BIRM is required.</div>				
FRACTURE CRITICAL INSPECTION COMMENTS					INDEPTH INSPECTION COMMENTS				
SPECIAL INSPECTION INFORMATION					***UNDERWATER INSPECTION INFORMATION***				
<div>DATE: 07/01/2014</div> <div>FREQUENCY: 120</div> <div>TEAM LEADER:</div> <div>INSPECTOR 2: ED HESS</div> <div>** When calculated interval exceeds the frequency, a justification comment per BIRM is required.</div>					<div>RESPONSIBILITY: DISTRICT</div> <div>CALCULATED INTERVAL**:</div> <div>INSPECTOR 3:</div> <div>INSPECTOR 4:</div> <div>CATEGORY: CHANNEL CROSS SEC</div> <div>NBI: NO</div> <div>METHOD: WT TAPE</div> <div>** When calculated interval exceeds the frequency, a justification comment per BIRM is required.</div>				
SPECIAL INSPECTION COMMENTS					UNDERWATER INSPECTION COMMENTS				
OTHER SPECIAL INSPECTIONS					OTHER UNDERWATER INSPECTIONS				
<div>DATE</div> <div>FREQUENCY</div> <div>CATEGORY</div> <div>NBI</div> <div>CALCULATED INTERVAL</div> <div>RESPONSIBILITY</div> <div>METHOD</div>					<div>DATE</div> <div>FREQUENCY</div> <div>CATEGORY</div> <div>NBI</div> <div>CALCULATED INTERVAL</div> <div>RESPONSIBILITY</div> <div>METHOD</div>				
Design_No = P0797									
<div>Page 1</div> <div>This report contains information that is protected from disclosure by federal law, 23 USC Section 409 and the Missouri Open Records Law (Sunshine Act), Section 610.021 RSMo. Please review MoDOT's policy and procedure manual on the Sunshine Act before releasing any of the information contained herein.</div>									

		Missouri Department of Transportation			December 09, 2024	
		State Bridge Inspection Report			7:11:45AM	
COUNTY: HOWELL		DISTRICT: SE		CLASS: STATBR	FED-ID: 7897	BRIDGE: P0797
STRUCTURE POSTING						
APPROVED CATEGORY: S-5		CENTERLINE OF BRIDGE AND TRUCKS OVER 19 TONS 15 MPH ON BRIDGE.				
Ton 1: 19		Ton 2:		Ton 3:		
COMMENTS:						
FIELD CATEGORY: S-5		CENTERLINE OF BRIDGE AND TRUCKS OVER 19 TONS 15 MPH ON BRIDGE.				
Ton 1: 19		Ton 2:		Ton 3:		PROBLEM:
COMMENTS:		PROBLEM DIRECTION:				
GENERAL COMMENTS/MAJOR RATED ITEMS						
GENERAL COMMENTS: (BOWDEJ1, 08/28/2008)--(37'-52'-37') SMP DECK GDR SPANS						
[ITEM 58] DECK: 4-POOR CONDITION		COMMENTS: (DENNIB1, 12/26/2012)--PATCHES AND SATURATION				
RATING : 12/06/2022						
[ITEM 59] SUPER: 4-POOR CONDITION		COMMENTS: (DENNIB1, 12/26/2012)--CRACKS AT GIRDER ENDS				
RATING : 12/06/2022		(DENNIB1, 12/15/2016)--SPALLS GDR ENDS				
[ITEM 60] SUB: 5-FAIR CONDITION		COMMENTS: (BRAWLK1, 12/06/2022)--DETERIORATION				
RATING : 12/18/2018						
[ITEM 61] BANK/CHANNEL: 6-WIDESPREAD MINOR DAMAGE		COMMENTS: (DENNIB1, 12/15/2016)--MINOR ERODING OF STREAM BANK				
RATING : 12/15/2016						
[ITEM 113] SCOUR: 8-STABLE FOR CALCULATED		COMMENTS:				
RATING : 05/18/2001						
EVALUATION TYPE :						
[ITEM 71] WATERWAY ADEQUACY: DECK ABOVE FLOOD ELEV		COMMENTS:				
RATING : 05/18/2001						
[ITEM 72] APPRRDWY ALIGNMENT: 6-SATISFACTORY		COMMENTS:				
RATING : 05/18/2001						
RAILING AND APPROACH PAVEMENT COMPONENTS AND RATINGS						
[ITEM 36A] BRIDGE RAILING RATING: DOESNT MEET CURRNT STND-0		RATING : 01/26/2009		COMMENTS:		
<u>MATERIAL</u>		<u>CONSTRUCTION</u>		<u>DIRECTION</u>		
REINFORCED CONCRETE		CURB		BOTH		
<u>CONDITION</u>		<u>LOCATION 1</u>		<u>LOCATION 2</u>		
SCALING		THROUGHOUT		SEVERITY		
REINFORCED CONCRETE		PARAPET		MODERATE		
		BOTH		<u>COMMENT</u>		
[ITEM 36B] TRANSITION RAILING RATING: NOT PROVIDED-0		RATING : 05/18/2001		COMMENTS:		
[ITEM 36C] APPROACH RAILING RATING: NOT PROVIDED-0		RATING : 05/18/2001		COMMENTS:		
[ITEM 36D] RAIL END TREATMENT RATING: NOT PROVIDED-0		RATING : 05/18/2001		COMMENTS:		
Design_No = P0797						
Page 2						
This report contains information that is protected from disclosure by federal law, 23 USC Section 409 and the Missouri Open Records Law (Sunshine Act), Section 610.021 RSMo. Please review MoDOT's policy and procedure manual on the Sunshine Act before releasing any of the information contained herein.						



		Missouri Department of Transportation State Bridge Inspection Report				December 09, 2024 7:11:45AM
COUNTY: HOWELL		DISTRICT: SE	CLASS: STATBR	FED-ID: 7897	BRIDGE: P0797	
<u>CONDITION</u> <u>ASSOCIATED COMPONENT</u> BEAM CAP	<u>LOCATION 1</u>	<u>LOCATION 2</u>	<u>SEVERITY</u>	<u>MEASUREMENT</u>	<u>COMMENT</u>	
	<u>MATERIAL</u>	<u>CONSTRUCTION</u>				
	REINFORCED CONCRETE	CAST-IN-PLACE				
	<u>CONDITION</u>	<u>LOCATION 1</u>	<u>LOCATION 2</u>	<u>SEVERITY</u>	<u>MEASUREMENT</u>	<u>COMMENT</u>
	HORIZONTAL CRACKS	THROUGHOUT	FEW			
	COLUMN	REINFORCED CONCRETE	CAST-IN-PLACE			
	<u>CONDITION</u>	<u>LOCATION 1</u>	<u>LOCATION 2</u>	<u>SEVERITY</u>	<u>MEASUREMENT</u>	<u>COMMENT</u>
	STRAIGHT WINGS	REINFORCED CONCRETE	CAST-IN-PLACE			
	<u>CONDITION</u>	<u>LOCATION 1</u>	<u>LOCATION 2</u>	<u>SEVERITY</u>	<u>MEASUREMENT</u>	<u>COMMENT</u>
	FOOTING	REINFORCED CONCRETE	SPREAD			
<u>CONDITION</u> <u>ASSOCIATED COMPONENT</u> BEAM CAP	<u>LOCATION 1</u>	<u>LOCATION 2</u>	<u>SEVERITY</u>	<u>MEASUREMENT</u>	<u>COMMENT</u>	
	<u>MATERIAL</u>	<u>CONSTRUCTION</u>				
	REINFORCED CONCRETE	CAST-IN-PLACE				
	<u>CONDITION</u>	<u>LOCATION 1</u>	<u>LOCATION 2</u>	<u>SEVERITY</u>	<u>MEASUREMENT</u>	<u>COMMENT</u>
	DELAMINATION	THROUGHOUT	MODERATE			
	HORIZONTAL CRACKS	THROUGHOUT	FEW			
	COLUMN	REINFORCED CONCRETE	CAST-IN-PLACE			
	<u>CONDITION</u>	<u>LOCATION 1</u>	<u>LOCATION 2</u>	<u>SEVERITY</u>	<u>MEASUREMENT</u>	<u>COMMENT</u>
	DELAMINATION	THROUGHOUT	MINOR			
	SCALING	THROUGHOUT	MODERATE			
<u>CONDITION</u> <u>ASSOCIATED COMPONENT</u> BEAM CAP	<u>LOCATION 1</u>	<u>LOCATION 2</u>	<u>SEVERITY</u>	<u>MEASUREMENT</u>	<u>COMMENT</u>	
	<u>MATERIAL</u>	<u>CONSTRUCTION</u>				
	REINFORCED CONCRETE	CAST-IN-PLACE				
	<u>CONDITION</u>	<u>LOCATION 1</u>	<u>LOCATION 2</u>	<u>SEVERITY</u>	<u>MEASUREMENT</u>	<u>COMMENT</u>
	DELAMINATION	THROUGHOUT	MINOR			
	SCALING	THROUGHOUT	MODERATE			
	SPALLS	WATERLINE	MINOR			
	FOOTING	REINFORCED CONCRETE	SPREAD			
	<u>CONDITION</u>	<u>LOCATION 1</u>	<u>LOCATION 2</u>	<u>SEVERITY</u>	<u>MEASUREMENT</u>	<u>COMMENT</u>
	EXPANSION BEARING	STEEL	SLIDING CURVED/FLAT PL			
<u>CONDITION</u> <u>ASSOCIATED COMPONENT</u> BEAM CAP	<u>LOCATION 1</u>	<u>LOCATION 2</u>	<u>SEVERITY</u>	<u>MEASUREMENT</u>	<u>COMMENT</u>	
	<u>MATERIAL</u>	<u>CONSTRUCTION</u>				
	REINFORCED CONCRETE	CAST-IN-PLACE				
	<u>CONDITION</u>	<u>LOCATION 1</u>	<u>LOCATION 2</u>	<u>SEVERITY</u>	<u>MEASUREMENT</u>	<u>COMMENT</u>
	DELAMINATION	THROUGHOUT	MODERATE			
	DETERIORATION	THROUGHOUT	MODERATE			
	HORIZONTAL CRACKS	THROUGHOUT	FEW			
	COLUMN	REINFORCED CONCRETE	CAST-IN-PLACE			
	<u>CONDITION</u>	<u>LOCATION 1</u>	<u>LOCATION 2</u>	<u>SEVERITY</u>	<u>MEASUREMENT</u>	<u>COMMENT</u>
	DELAMINATION	THROUGHOUT	MINOR			
<u>CONDITION</u> <u>ASSOCIATED COMPONENT</u> BEAM CAP	<u>LOCATION 1</u>	<u>LOCATION 2</u>	<u>SEVERITY</u>	<u>MEASUREMENT</u>	<u>COMMENT</u>	
	<u>MATERIAL</u>	<u>CONSTRUCTION</u>				
	REINFORCED CONCRETE	CAST-IN-PLACE				
	<u>CONDITION</u>	<u>LOCATION 1</u>	<u>LOCATION 2</u>	<u>SEVERITY</u>	<u>MEASUREMENT</u>	<u>COMMENT</u>
	DELAMINATION	THROUGHOUT	MINOR			
	SPALLS	RANDOM	MINOR			
	FOOTING	REINFORCED CONCRETE	SPREAD			
	<u>CONDITION</u>	<u>LOCATION 1</u>	<u>LOCATION 2</u>	<u>SEVERITY</u>	<u>MEASUREMENT</u>	<u>COMMENT</u>



Missouri Department of Transportation

State Bridge Inspection Report

December 09, 2024
7:11:45AM

COUNTY: HOWELL

DISTRICT: SE

CLASS: STATBR

FED-ID: 7897

BRIDGE: P0797

EXPANSION BEARING	STEEL	SLIDING CURVED/FLAT PL/			
<u>CONDITION</u>	<u>LOCATION 1</u>	<u>LOCATION 2</u>	<u>SEVERITY</u>	<u>MEASUREMENT</u>	<u>COMMENT</u>
RUSTING	THROUGHOUT		MODERATE		
EXPANSION BEARING	STEEL	SINGLE ROLLER			
<u>CONDITION</u>	<u>LOCATION 1</u>	<u>LOCATION 2</u>	<u>SEVERITY</u>	<u>MEASUREMENT</u>	<u>COMMENT</u>
RUSTING	THROUGHOUT		MODERATE		
ABUTMENT-4	23 FT 9 IN	REINFORCED CONCRETE	OPEN CONCRETE		
<u>ASSOCIATED COMPONENT</u>	<u>MATERIAL</u>	<u>LOCATION 1</u>	<u>LOCATION 2</u>	<u>SEVERITY</u>	<u>MEASUREMENT</u>
BEAM CAP	REINFORCED CONCRETE	<u>CONSTRUCTION</u>			
<u>CONDITION</u>	<u>LOCATION 1</u>	<u>LOCATION 2</u>	<u>SEVERITY</u>	<u>MEASUREMENT</u>	<u>COMMENT</u>
DETERIORATION	ENDS		MINOR		
COLUMN	REINFORCED CONCRETE	CAST-IN-PLACE			
<u>CONDITION</u>	<u>LOCATION 1</u>	<u>LOCATION 2</u>	<u>SEVERITY</u>	<u>MEASUREMENT</u>	<u>COMMENT</u>
STRAIGHT WINGS	REINFORCED CONCRETE	CAST-IN-PLACE			
<u>CONDITION</u>	<u>LOCATION 1</u>	<u>LOCATION 2</u>	<u>SEVERITY</u>	<u>MEASUREMENT</u>	<u>COMMENT</u>
FOOTING	REINFORCED CONCRETE	SPREAD			
<u>CONDITION</u>	<u>LOCATION 1</u>	<u>LOCATION 2</u>	<u>SEVERITY</u>	<u>MEASUREMENT</u>	<u>COMMENT</u>
BACKWALL	REINFORCED CONCRETE	CAST-IN-PLACE			
<u>CONDITION</u>	<u>LOCATION 1</u>	<u>LOCATION 2</u>	<u>SEVERITY</u>	<u>MEASUREMENT</u>	<u>COMMENT</u>
EXPANSION BEARING	STEEL	SLIDING CURVED/FLAT PL/			
<u>CONDITION</u>	<u>LOCATION 1</u>	<u>LOCATION 2</u>	<u>SEVERITY</u>	<u>MEASUREMENT</u>	<u>COMMENT</u>
RUSTING	THROUGHOUT		MODERATE		

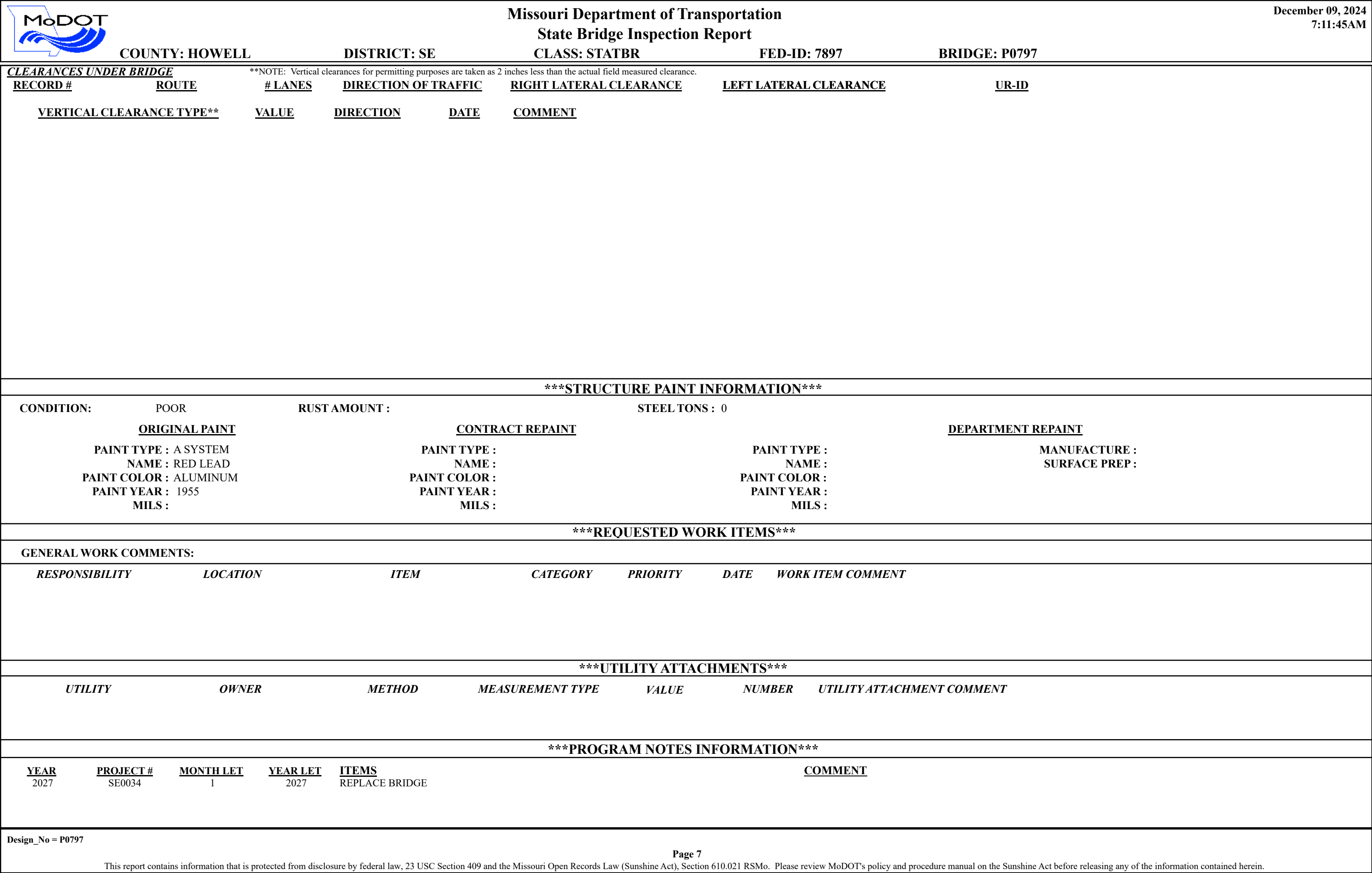
*****OVER/UNDER ROUTES CLEARANCE INFORMATION*****


CLEARANCES OVER DECK

****NOTE:** Vertical clearances for permitting purposes are taken as 2 inches less than the actual field measured clearance.

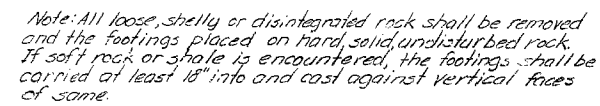
Design_No = P0797

This report contains information that is protected from disclosure by federal law, 25 USC Section 409 and the Missouri Open Records Law (Sunshine Act), Section 610.021 RSMo. Please review MoDOT's policy and procedure manual on the Sunshine Act before releasing any of the information contained herein.



			Missouri Department of Transportation		December 09, 2024	
			State Bridge Inspection Report		7:11:45AM	
COUNTY: HOWELL			DISTRICT: SE		CLASS: STATBR	
			FED-ID: 7897		BRIDGE: P0797	
COMPUTER GENERATED RATINGS AND DEFICIENCY ITEMS					***ADVANCED SIGN INFORMATION***	
NOTE: The items listed in this section are updated whenever computer edits are ran on a structure after the inspection updates have been entered in to TMS.					SIGN #	
					SIGN TYPE	
					PROBLEM	
					PROBLEM DIRECTION	
<u>Rated Item</u>						
<u>Rating</u>						
<u>Rating Date</u>						
[Item 67] Structure Evaluation Rating: 2-BASICALLY INTOLRBLE REQ 12/20/2023						
[Item 68] Deck Geometry Rating: 2-BASICALLY INTOLRBLE REQ 3/8/2022						
[Item 69] Underclearance: N-NOT APPLICABLE 5/18/2001						
Sufficiency Rating: 19.0% 3/6/2024						
Deficiency: STRUCTURAL 2/17/2022						
Funding Eligibility: FULL ----						
Estimated New Structure Length: 157 FT. ----						
Estimated Structure Cost: \$1,004,643 ----						
Estimated Total Project Cost: \$1,506,965 ----						
Year of Cost Estimate: 2024 ----						
NOTE: The above structure length and cost estimates are computer generated using algorithms in the TMS system. These algorithms are generalized to use NBI items to come up with a new structure length and width to calculate a new area which is taken times a representative cost per square foot. The actual structure size and cost may vary significantly from these numbers once site specific engineering is done.						
					OUTFALL INSPECTION INFORMATION	
					# OUTFALLS:	
					INSPECTOR:	
					STATUS:	
					DATE:	
					NOTES:	

FED. ROAD DIST. NO.	STATE	FED. AID PPOI. NO.	FISCAL YEAR	SHEET NO.	TOTAL SHEETS
5	MO.	5-1439(1) CFC, B (SJJ)	19		

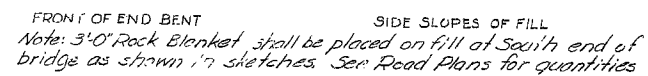


GENERAL ELEVATION

Note: Old roadway fill under ends of bridge shall be removed to natural ground line. Payment for this excavation outside the limits of excavation for substructure will be made at the unit contract price for Roadway Excavation.



Design Specifications: A.A.S.H.O. 1953
Loading: H10-44
Reinforcing Steel Stress: 20,000 $\frac{lb}{in}^2$
Class "B" Concrete Stress: 1,200 $\frac{lb}{in}^2$
All concrete shall be Class "B".
Where joint filler is specified on plans
it shall conform with the requirement for
Pneumatically Applied Mortar for Filler as given in
Section 38-10A(1) of the Standard Specifications.
Reinforcing steel shall be in accordance with
Special Provision dated 2-3-55. Structural Grade
shall not be used.
Paint: See Sheet No. 4 of 4 relative to
painting of bearings.



ROCK BLANKET SKETCHES

Note: This drawing is not to scale. Follow dimensions.

Note: See sheets No. 3 & 4 for E.I. of Reinforcing Steel for Superstructure.

Note: Excavation for bridge made above Elev 989.0 will be paid for as Class 1 Excavation for Structures.
Excavation for bridge made below Elev 989.0 will be paid for as Class 2 excavation for Structures.

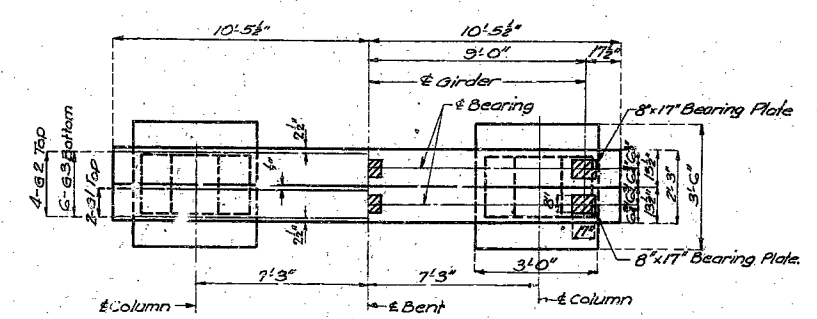
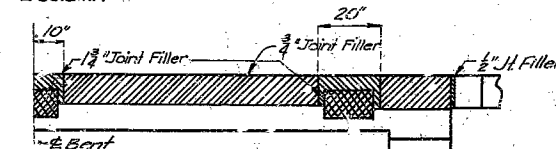
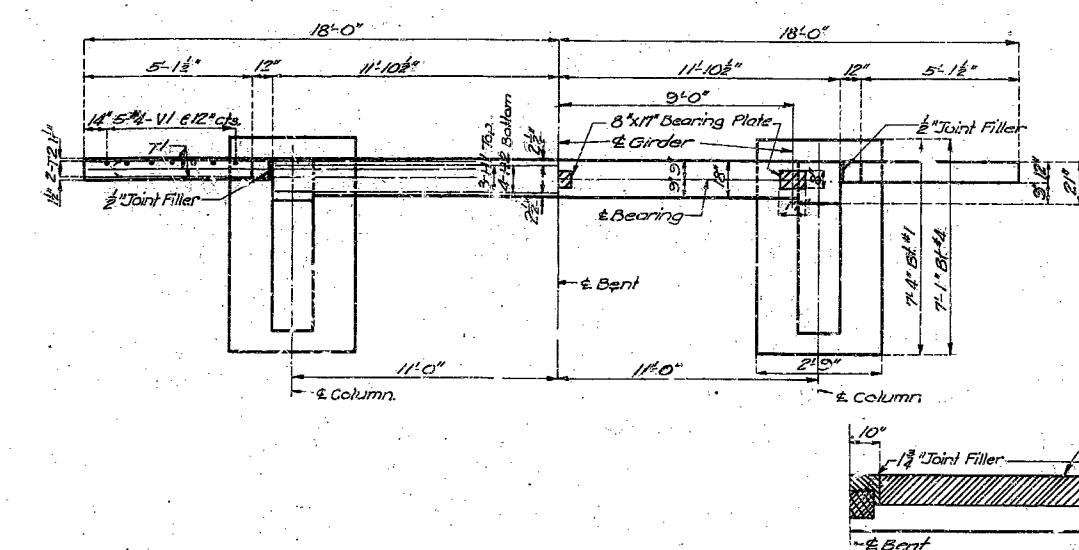
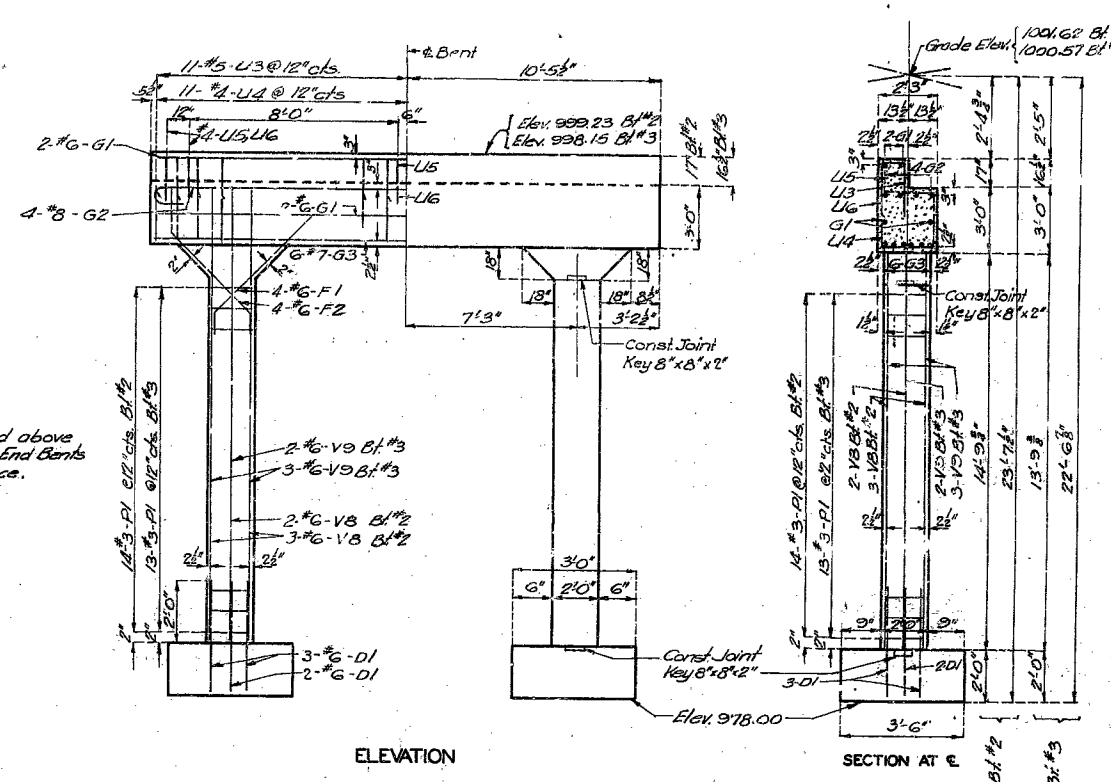
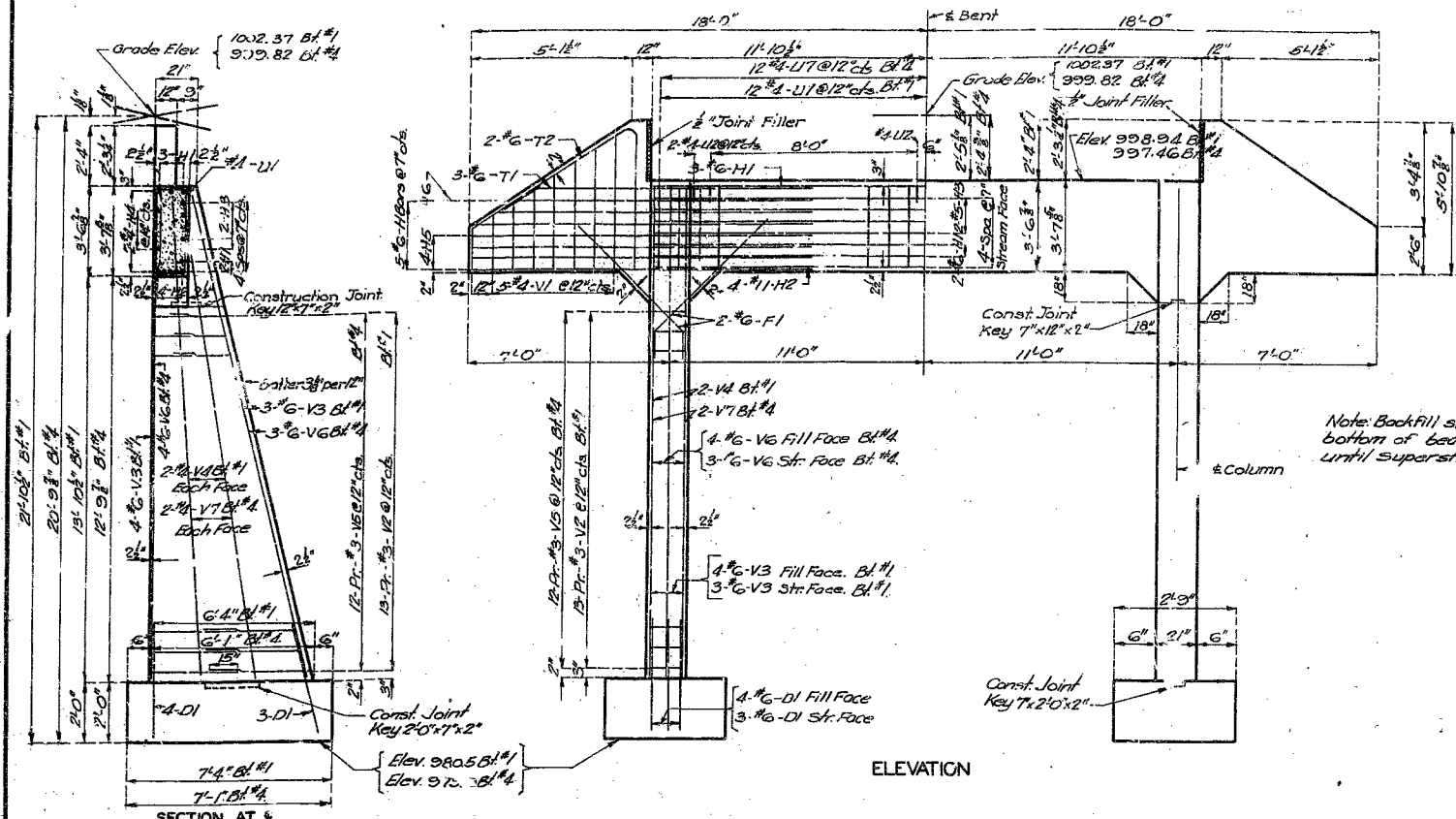
E.M.#22 Elk 997.96 in Top Conc. Post Bridge 10' Lt Skt.
 221+15.7
BRIDE OVER SOUTH FORK OF SPRING RIVER
 STATE ROAD FROM ROUTE 160 S.W. OF WEST PLAINS SOUTH
 ABOUT 9.0 MILES S.W. OF WEST PLAINS
 PROJECT NO. S-1439 (1) SEC. 8 (SJJ) STA. 220+86.5
 HOWELL COUNTY

SUBMITTED BY J. A. Williams DATE 5/12/1955
BRIDGE ENGINEER
 APPROVED BY Ray M. Whitten DATE 5/12/1955
CHIEF ENGINEER

FINISHED
 STD. C-6509
 STD. C-110R3
 P-797

MISSOURI STATE HIGHWAY DEPARTMENT

FED. ROAD DIST. NO.	STATE	FED. AID PROJ. NO.	FISCAL YEAR	SHEET NO.	TOTAL SHEETS
5	MO.	5-1439(1)	19		



BRIDGE OVER SOUTH FORK OF SPRING RIVER

STATE ROAD FROM ROUTE 180 S.W. OF WEST PLAINS SOUTH
ABOUT 9.0 MILES S.W. OF WEST PLAINS
PROJECT NO. 5-1439(1) SEC B (SJJ) STA. 220+86.5

HOWELL COUNTY

FINISHED

P-797

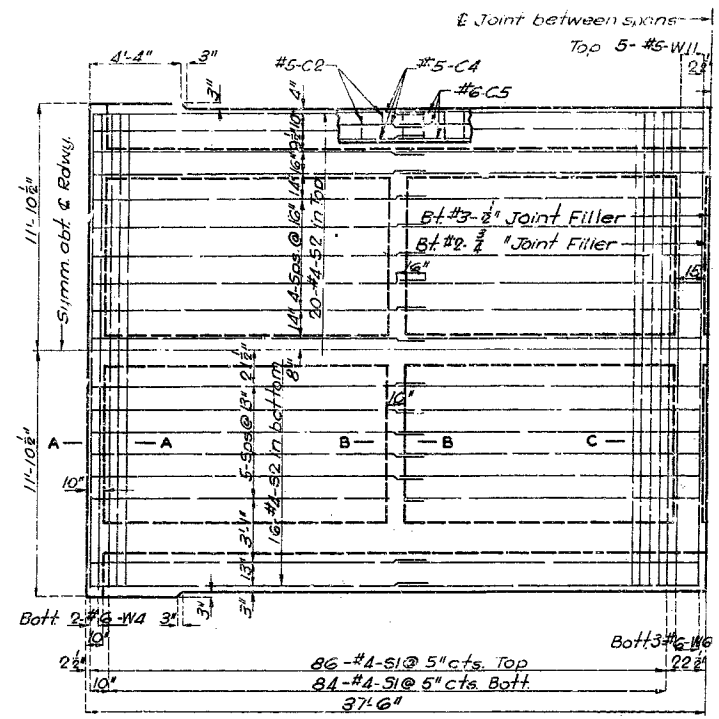
Assembled Apr. 1955 by C.H.M. & S.W.S.
Checked Apr. 1955 by Q.R.K.

Note: This drawing is not to scale. Follow dimensions.

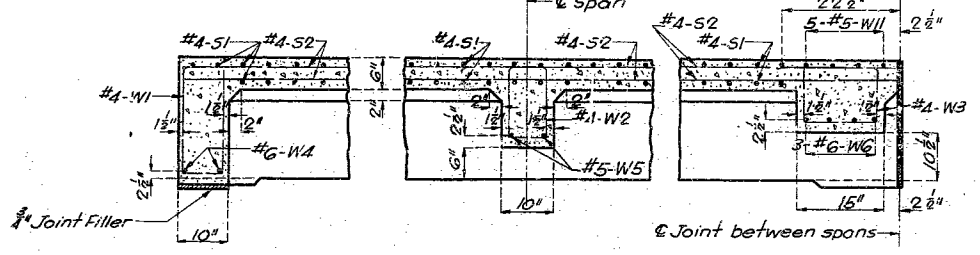
Sheet No. 2 of 4
SEE FINAL PLANS BROWN LINES Deck Girder - 2 Column and Bent - 2 Column Int. Bent -

MISSOURI STATE HIGHWAY DEPARTMENT

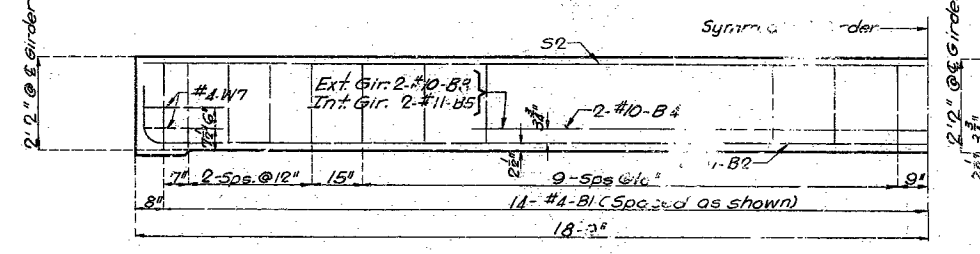
FED. ROAD DIST. NO.	STATE	F.D. AID PROJ. NO.	FISCAL YEAR	SHEET NO.	TOTAL SHEETS
5	MO.	5-1439 (SEC. B (S.J.))	19		



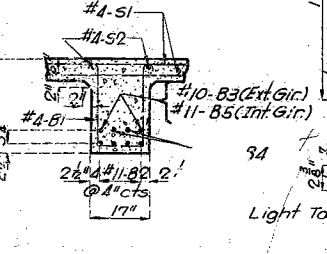
SPAN (1-2) (4-3)
PLAN OF SLAB SHOWING REINFORCEMENT



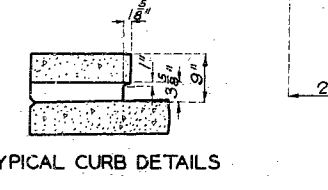
SECTION A-A SECTION B-B SECTION C-C
TYPICAL PART LONGITUDINAL SECTION



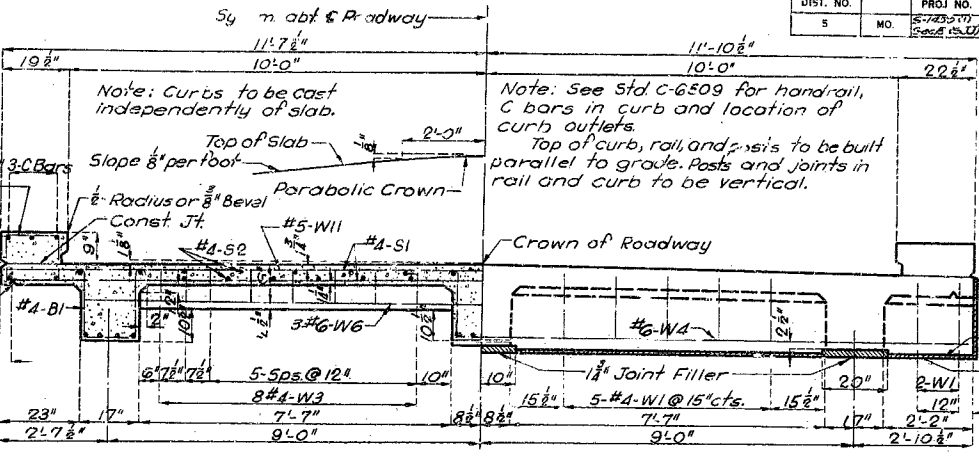
GIRDER REINFORCEMENT



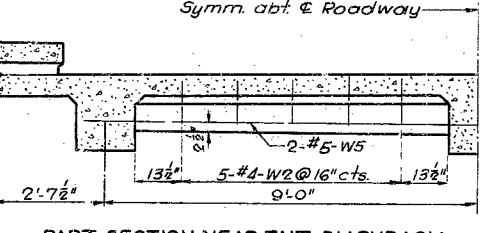
SECTION THRU GIRDER



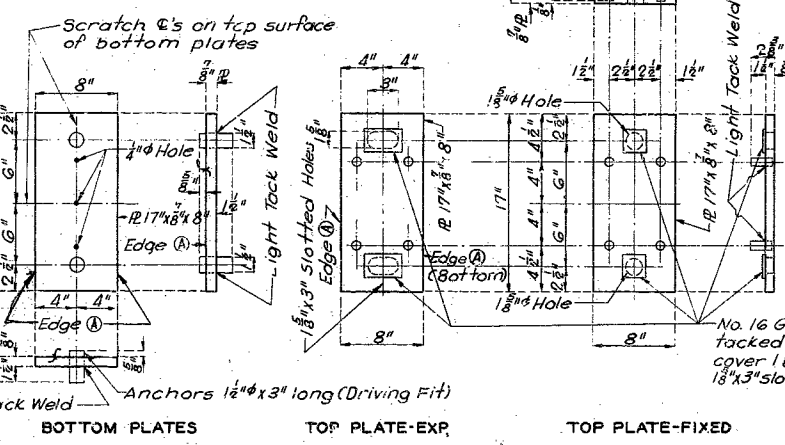
TYPICAL CURB DETAILS



HALF SECTION THRU SPAN (Near Intermediate Bent)



PART SECTION NEAR INT. DIAPHRAGM



DETAILS OF BEARING PLATES

BILL OF REINFORCING STEEL-SPANS' 2) & (3-4)						
No	Size	Length	Mark	Location	Bending Sketches	
168	#4	5'-6"	B1	Girder		
24	#11	39'-6"	B2	"		
8	#10	27'-9"	B3	"		
12	#10	21'-0"	B4	"		
4	#11	28'-9"	B5	"		
20	#5	3'-6"	C1	Curb		
116	#5	3'-3"	C2	"		
4	#5	4'-0"	C3	"		
12	#5	20'-3"	C4	"		
12	#6	20'-3"	C5	"		
20	#5	6'-0"	R1	End Post		
120	#4	4'-9"	R2	Rail		
8	#4	3'-9"	R3	End Post		
8	#4	8'-9"	R4	Rail		
8	#4	6'-6"	R5	"		
48	#4	9'-0"	R6	"		
340	#4	23'-0"	S1	Slab		
144	#4	19'-3"	S2	"		
28	#4	5'-5"	W1	End Web		
20	#4	6'-1"	W2	Int Web		
32	#4	1'-3"	W3	End Web		
4	#6	23'-6"	W4	End Web		
4	#5	19'-0"	W5	Int Web		
6	#6	19'-0"	W6	End Web		
24	#4	5'-3"	W7	Girder		
10	#5	23'-0"	W11	End Web		

Note: Bars in the above unit to be billed and tagged separately.

BRIDGE OVER SOUTH FORK OF SPRING RIVER

STATE ROAD FROM ROUTE 160 S.W. OF WEST PLAINS SOUTH
ABOUT 90 MILES S.W. OF WEST PLAINS
PROJECT NO. 5-1439 (SEC. B (S.J.)) STA. 220+86.5

HOWELL COUNTY

FINISHED

P-797

Assembled Apr. 1955 by D.B. & W.G.S.
Checked Apr. 1955 by A.F.K.

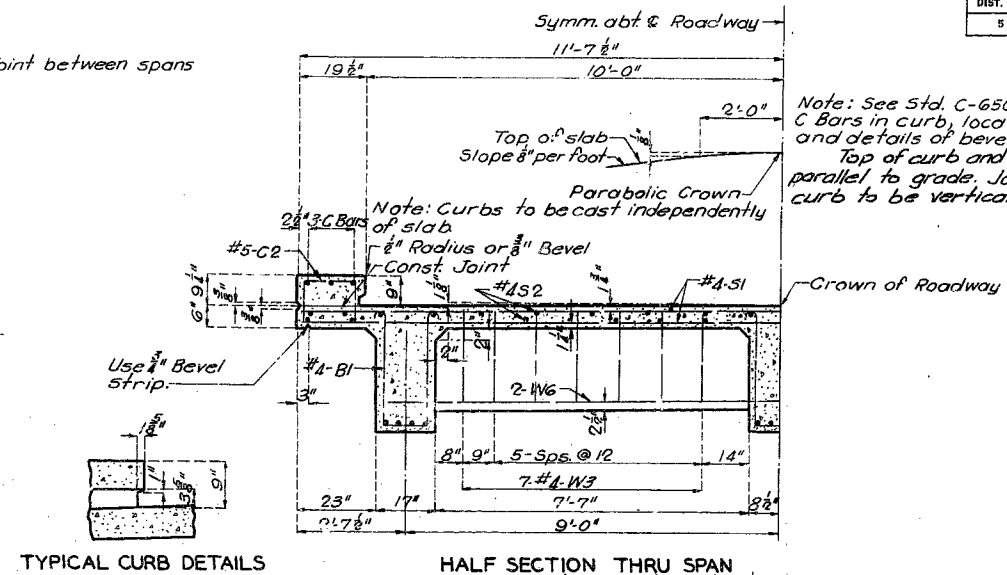
Note: This drawing is not to scale. Follow Dimensions.

Sheet No. 3 of 4.

NO CONSTRUCTION CHANGES

25' thru 40' Deck Girder H-10 20' Rdwy. 4-12-55

FED. ROAD DIST. NO.	STATE	FED. AID PROJ. NO.	FISCAL YEAR	SHEET NO.	TOTAL SHEETS
5	MO.	3-735(1) SACB (3-11)	19		



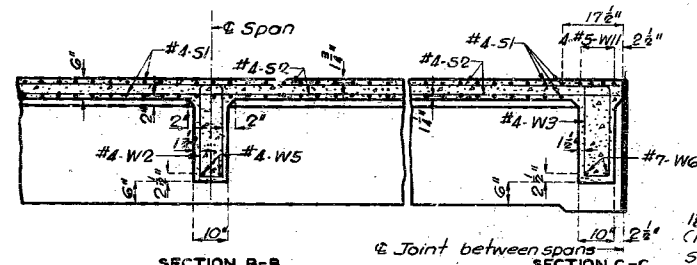
GIRDER HAUNCHES

TYPICAL CURB DETAILS

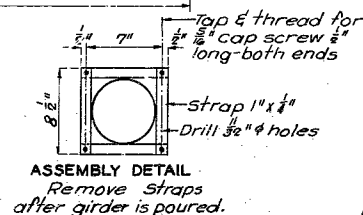
HALF SECTION THRU SPAN
(Near Intermediate Bent)
Symm. abt. & Roadway—

PLAN OF SLAB SHOWING REINFORCEMENT

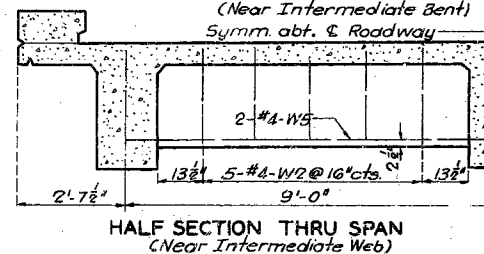
SPAN (2-3)



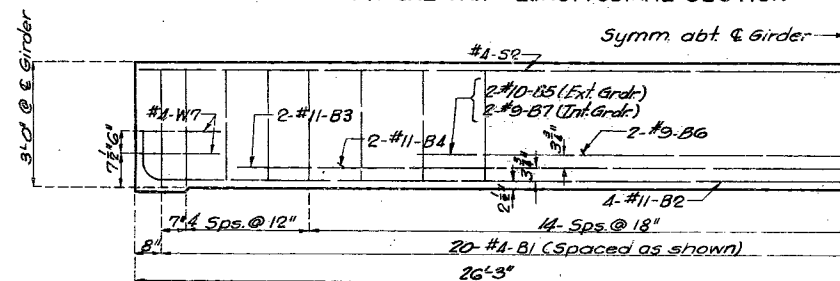
TYPICAL PART LONGITUDINAL SECTION



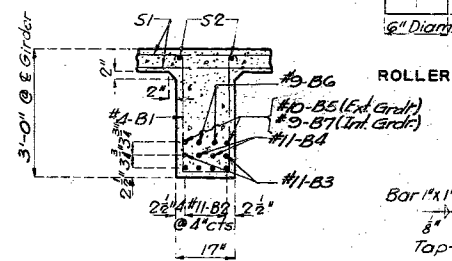
ASSEMBLY DETAIL
Remove Straps
after girder is poured.



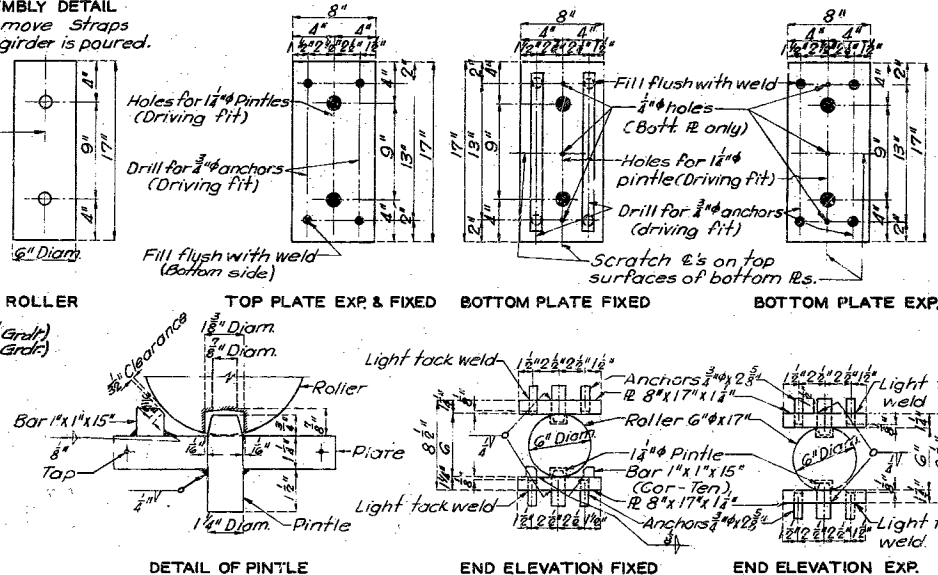
HALF SECTION THRU SPAN
(Near Intermediate Web)



GIRDER REINFORCEMENT



SECTION THRU GIRDER



DETAIL OF PINTLE

END ELEVATION FIXED

END ELEVATION EXP.

DETAILS OF BEARING DEVICE

Note: Material for plates, pintles, and 1" bars shall be Cor-Ten, Mayari-R, or equivalent. Material for rollers shall be hot rolled carbon steel, A.I.S.C. C1045.

EG05 or 16 welding electrodes shall be used for welding.

All bearing plates shall be straightened to plane surface.

Paint Shop one coat red lead except top surface of top plates and bottom surface of bottom plates; field all exposed surfaces first coat brown and second coat aluminum. Payment for cleaning and painting such surfaces to be included in price bid for items painted.

Acceptance

Sheet No. 4 of 4.

BILL OF REINFORCING STEEL-SPAN (2-3)					Bending Sketches	
No.	Size	Length	Mark	Location		
117	#1	7'13"	B1	Girder	Symmetrical	
12	#11	54'0"	B2	"		
6	#11	44'0"	B3	"		
6	#11	38'6"	B4	"		
4	#10	30'3"	B5	"		
6	#9	20'6"	B6	"		
2	#9	28'0"	B7	"		
60	#5	3'3"	C2	Curb		
12	#6	27'3"	CG	"		
110	#4	41'9"	R2	Rail		
40	#1	10'3"	R7	"		
210	#4	23'0"	S1	Slab		
12	#4	26'9"	S2	"		
10	#4	7'9"	W2	Int Web		
14	#4	6'3"	W3	End Web		
2	#4	19'0"	W5	Int Web		
4	#7	19'0"	W6	End Web		
12	#4	5'3"	W7	Girder		
8	#5	23'0"	W11	End Web		

Note: Bars in the above unit to be billed & tagged separately.

BRIDGE OVER SOUTH FORK SPRING RIVER

STATE ROAD FROM ROUTE 160 S.W. OF WEST PLAINS SOUTH
ABOUT 9.0 MILES S.W. OF WEST PLAINS
PROJECT NO. S-1439(1) SEC. B (SJJ) STA. 220+86.5

HOWELL COUNTY.

FINISHED

FINISHED

Rev 6-10-55

P-797

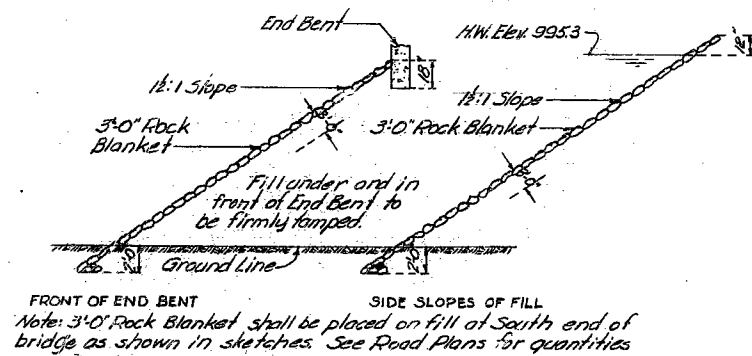
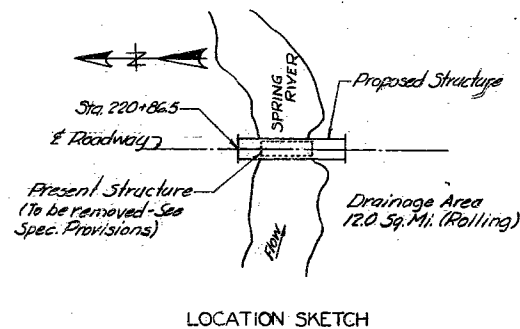
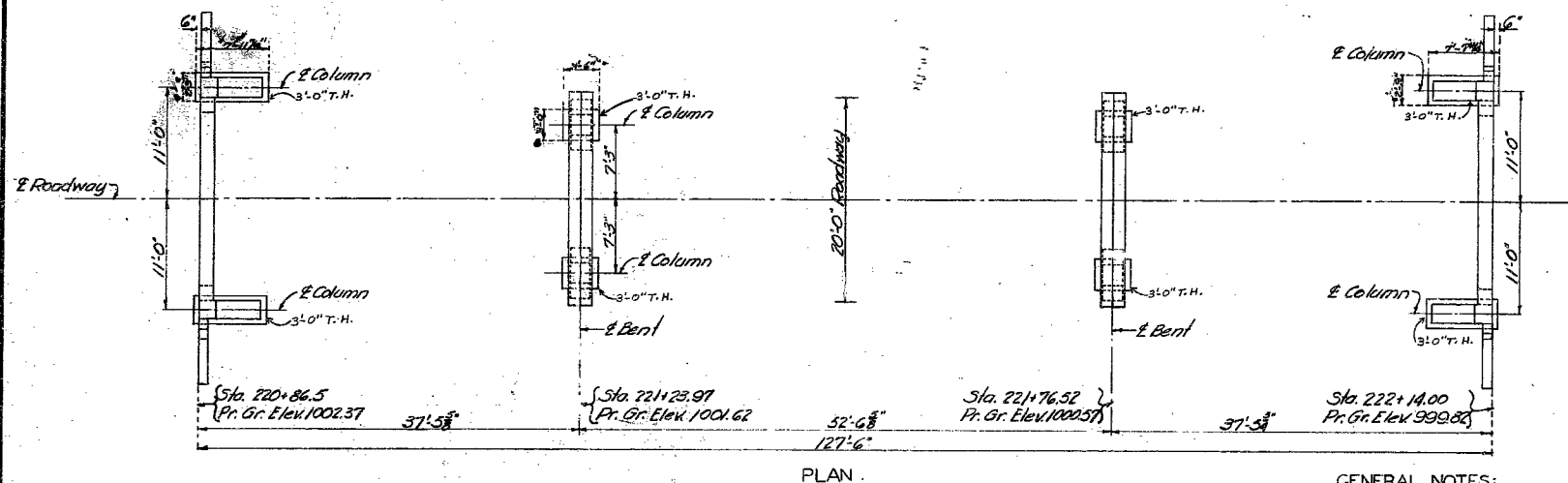
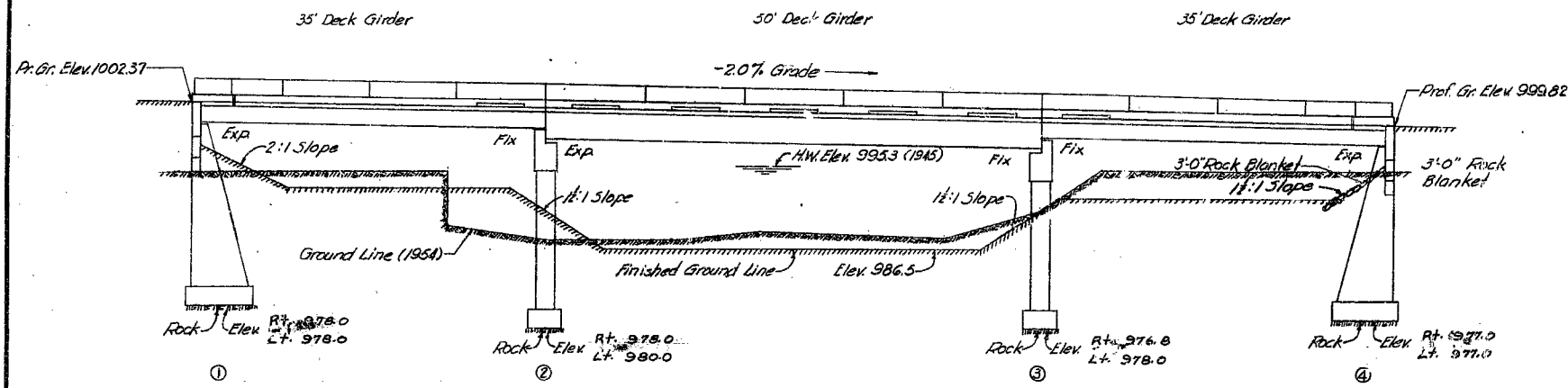
NO CONSTRUCTION CHANGES

Assembled April 1955 by D.B. & S.W.S.
Checked Apr. 1955 by G.F.K.

Note: This drawing is not to scale. Follow dimensions

Sheet No. 4 of 4.

MISSOURI STATE HIGHWAY DEPARTMENT



GENERAL NOTES:

Design Specifications: A.A.S.H.O. 1953
 Loading: H10-44
 Reinforcing Steel Stress: 20,000 psi
 Class "B" Concrete Stress: 1,200 psi
 All concrete shall be Class "B".
 Where joint filler is specified on plans it shall conform with the requirements for Premolded Material for Filler as given in Section 38-10A(1) of the Standard Specifications.
 Reinforcing steel shall be in accordance with Special Provision dated 2-3-55. Structural Grade shall not be used.
 Paint: See Sheet No. 4 of 4 relative to painting of bearings.

FINAL PLANS

BILL OF REINFORCING STEEL - SUBSTRUCTURE					Bending Sketches & Cutting Diagrams				
No.	Size	Length	Mark	Location					
End Bents No. 1 & 4									
10	#6	23'6"	H1	Beam					
8	#11	23'6"	H2	"					
4	#5	23'6"	H3	"					
4	#6	23'6"	H4	"					
16	#6	12'3"	H5	Wing					
4	#6	11'6"	H5	"					
12	#6	9'3"	T1	Wing					
8	#6	12'0"	T2	"					
28	#4	10'3"	U1	Beam Bt #1					
12	#4	2'3"	U2	Beam					
23	#4	10'6"	U7	Beam Bt #4					
10	#4	8'3"	V1	Wing					
26	#3	14'3"	V2	Column Bt #1					
18	#6	17'3"	V3	"					
8	#4	15'0"	V4	"					
24	#3	14'0"	V5	Column Bt #4					
14	#6	16'3"	V6	"					
8	#4	13'0"	V7	"					
16	#6	7'3"	F1	Haunch					
28	#6	4'0"	D1	Footings					
Intermediate Bents No. 2 & 3									
32	#6	4'0"	D1	Footings					
16	#6	7'3"	F1	Haunch					
16	#6	7'6"	F2	"					
8	#6	20'6"	G1	Beam					
8	#6	22'0"	G2	"					
12	#7	20'6"	G3	"					
34	#6	7'9"	P1	Column					
End Bents No. 1 & 4									
8	#6	4'0"	V9	Column Bt #3					
12	#5	4'5"	U5	Beam					
42	#4	10'6"	U1	"					
12	#4	2'0"	U5	"					
12	#4	3'0"	U6	"					
16	#6	17'3"	V8	Column Bt #2					
16	#6	16'3"	V9	Column Bt #5					
Reinforcing Steel Added									
8	#6	4'0"	V9	Column Bt #3					
12	#5	4'5"	U5	Beam					
42	#4	10'6"	U1	"					
12	#4	2'0"	U5	"					
12	#4	3'0"	U6	"					
16	#6	17'3"	V8	Column Bt #2					
16	#6	16'3"	V9	Column Bt #5					
Total Lbs. Re-Steel Added - 380#									

Note: See sheets No. 384 for Bill of Reinforcing Steel for Superstructure.

FINAL QUANTITIES

Item	Substr.	Superstr.	Total
Class 1 Excavation for Structures	Cu. Yds.	18.0	18.0
Class 2 Excavation for Structures	Cu. Yds.	18.0	18.0
Reinforcing Steel	Lbs.	18,000	18,000
Class "B" Concrete (Handrail)	Cu. Yds.	1.0	1.0
Class "B" Concrete (Except Handrail)	Cu. Yds.	1.0	1.0
Fabricated Structural Steel (Bearings)	Lbs.	22,000	22,000
Class 2 (60%) Excavation for Structures	Cu. Yds.	22.0	22.0
Test Holes	8 Holes At 3'-0"	24'	24'

Note: Excavation for bridge made above Elev 999.0 will be paid for as Class 1 Excavation for Structures.
 Excavation for bridge made below Elev 989.0 will be paid for as Class 2 Excavation for Structures.

B.M. #22A Elev 999.68 on NW Cor. of Abut #4 Bridge Sta. 220+86.5
BRIDGE OVER SOUTH FORK OF SPRING RIVER

STATE ROAD FROM ROUTE 160 S.W. OF WEST PLAINS SOUTH
 ABOUT 9.0 MILES S.W. OF WEST PLAINS
 PROJECT NO. 5-1439 (1) SEC. B(SJ)STA. 220+86.5

HOWELL

COUNTY

FINISHED

SUBMITTED BY: J. A. Williams DATE: 5/12/1955
 APPROVED BY: Roy M. Whitton DATE: 5/12/1955

STD. C-6509
 STD. C-110R3

P-797

FINAL PLANS

Sheet No. 1A of 2.

Drawn April 1955 by D.E.
 Checked April 1955 by A.F.K.

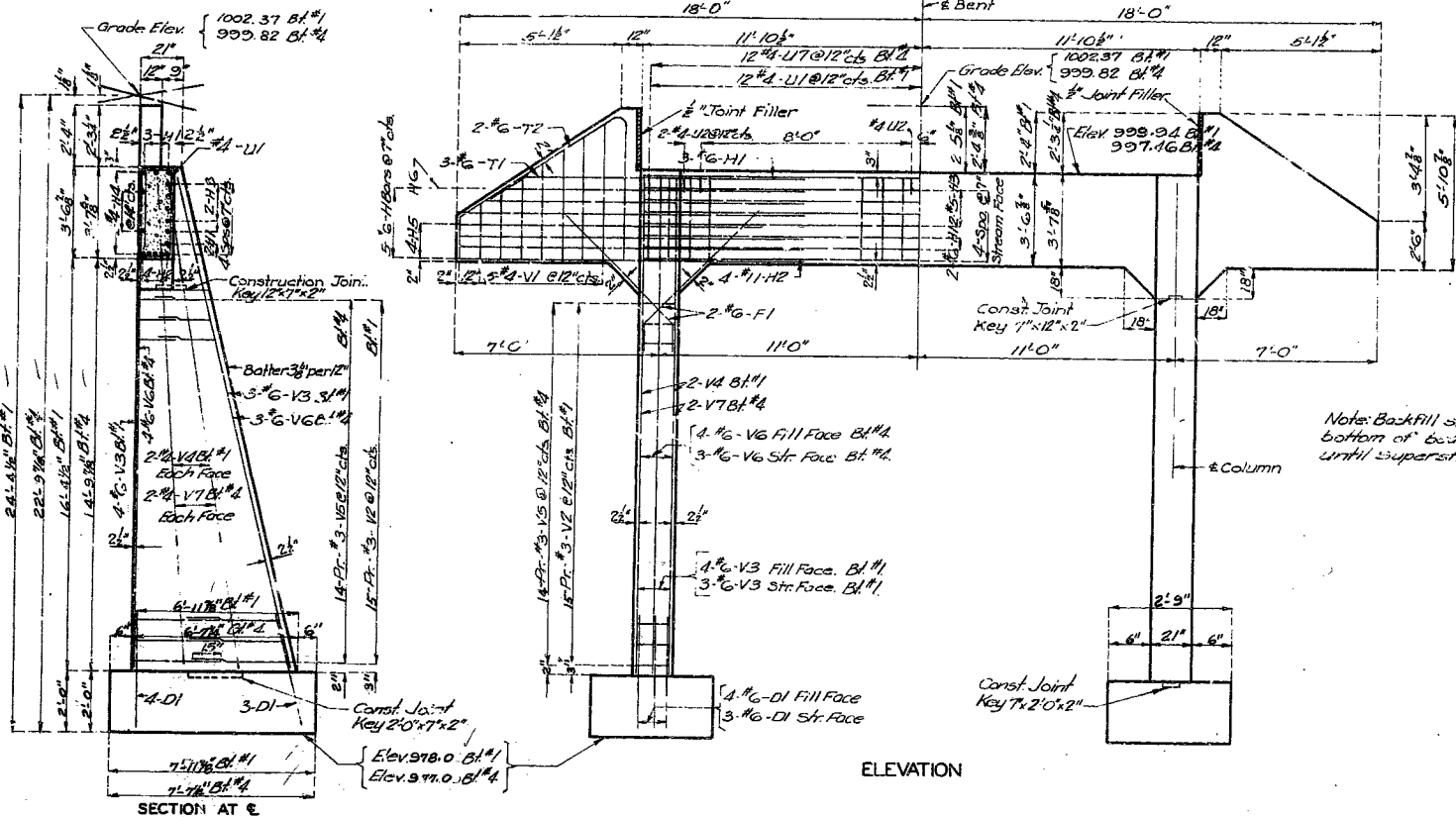
Note: This drawing is not to scale. Follow dimensions.

145

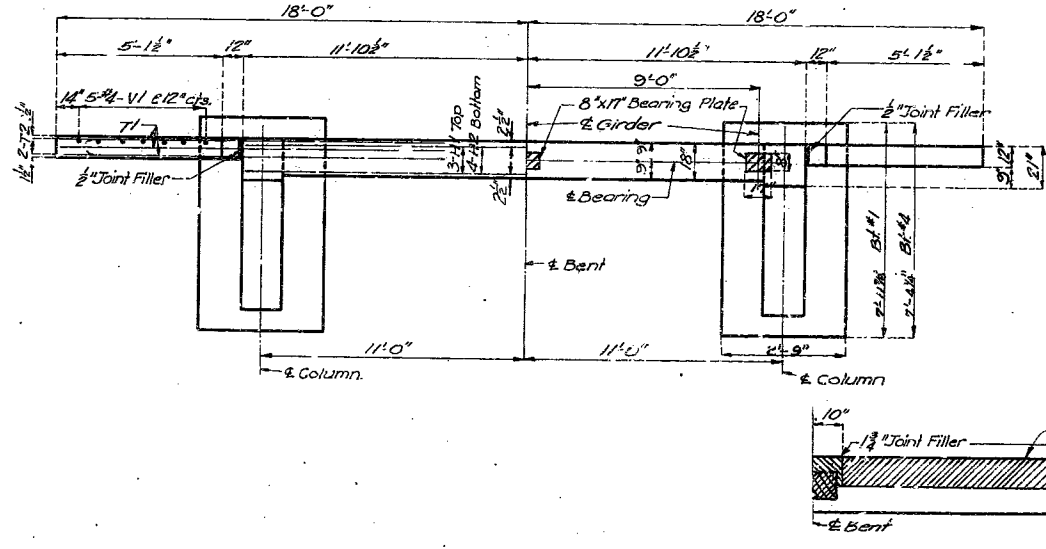
MISSOURI STATE HIGHWAY DEPARTMENT

FED. ROAD DIST. NO.	STATE	FED. AID PROJ. NO.	FISCAL YEAR	SHEET NO.	TOTAL SHEETS
5	MO	5-1439(1)	19		

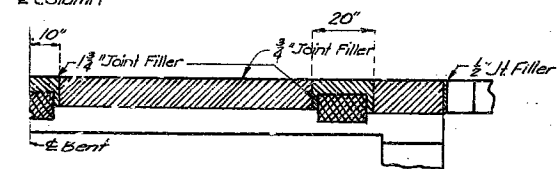
FINAL PLANS



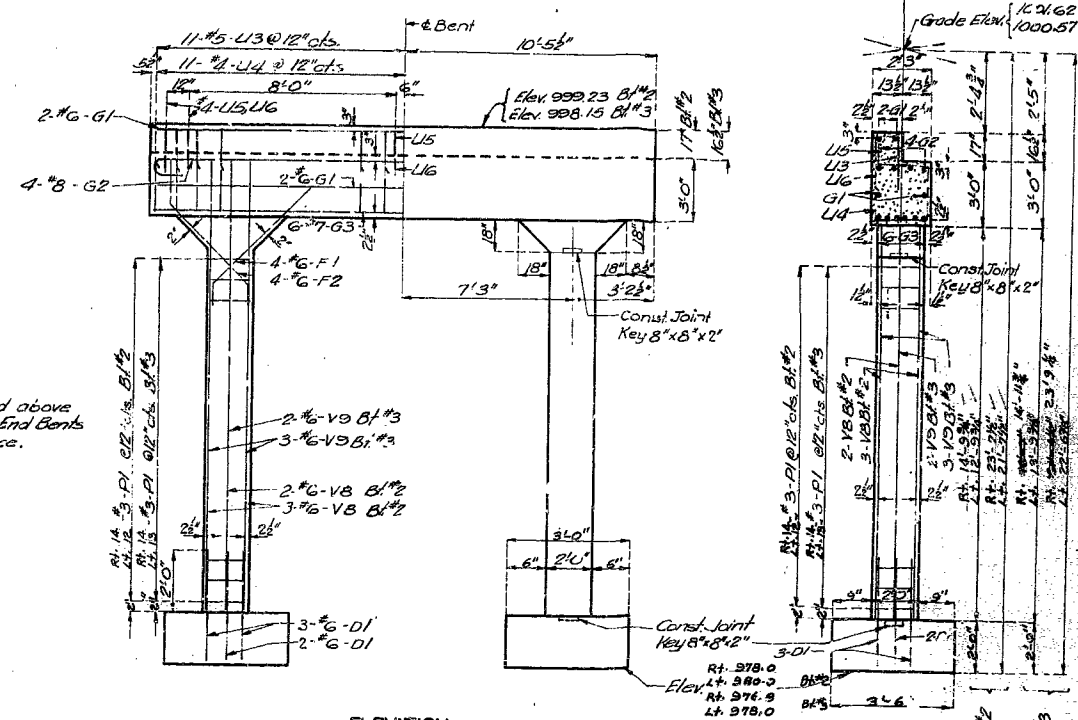
ELEVATION



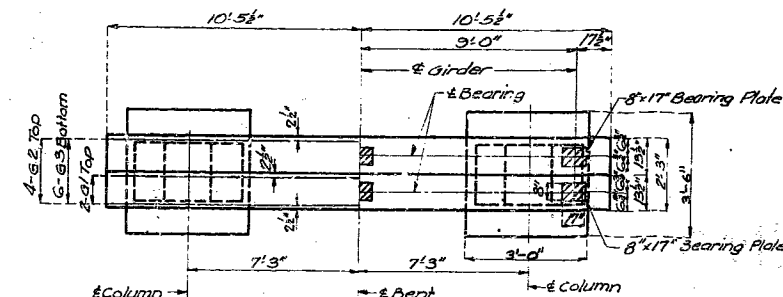
PLAN
DETAILS OF END BENTS NO. 1 & 3



DETAIL OF JOINT FILLER AT END BENTS



ELEVATION



PLAN
DETAILS OF INTERMEDIATE BENTS NO. 2 & 3

BRIDGE OVER SOUTH FORK SPRING RIVER

STATE ROAD FROM ROUTE 160 S.W. WEST PLAINS SOUTH
ABOUT 9.0 MILES S.W. OF WEST PLAINS
PROJECT NO. S-1439(1) SEC. B (S.J.J.) STA. 220+86.5

HOWELL COUNTY

FINISHED

FINISHED

P-797

FINAL PLANS

Deck Girder - 2 Column End Bent - 2 Column Int. Bent -

Assembled Apr. 1955 by C.H.M. & S.W.S.
Checked Apr. 1955 by C.H.M.

Note: This drawing is not to scale. Follow dimensions.

Sheet No. 2A of 2