



J9P3308 Pre-Bid Meeting Bill Emerson Bridge Rehabilitation

EFK♦Moen
Civil Engineering Design



J9P3308 Bill Emerson Bridge Rehabilitation

Pre-Bid Meeting
12/17/2024
10:00 am

Bid Opening
January 17, 2025



Agenda

1. Project Location
2. Project Overview
3. Bridge Repairs
4. Roadway / MOT
5. Railroad
6. Utilities
7. Environmental
8. JSP's
9. Schedule
10. Questions





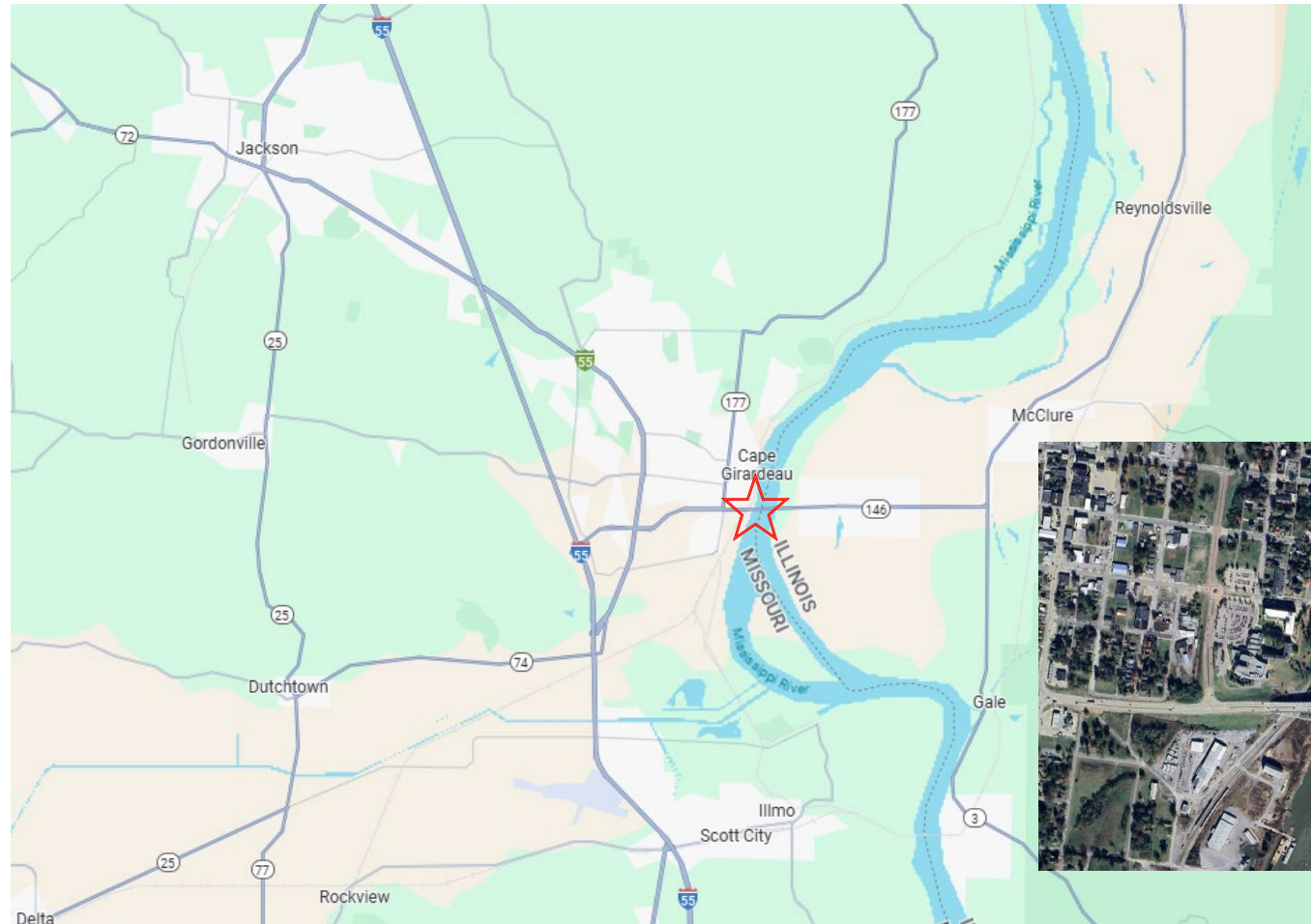
J9P3308 Pre-Bid Meeting Bill Emerson Bridge Rehabilitation

Project Location

Route 74 over the
Mississippi River in
Cape Girardeau



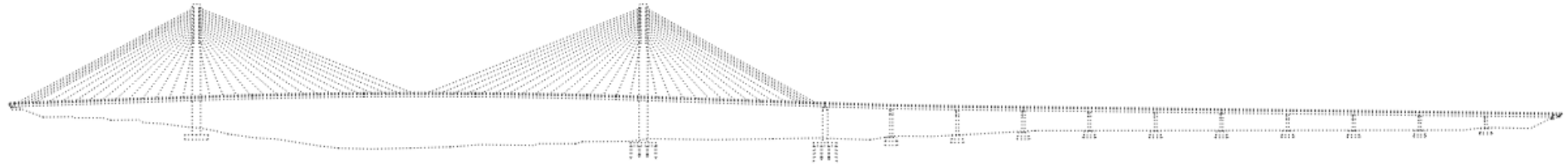
KEY MAP
LOCATION OF CAPE GIRARDEAU COUNTY,



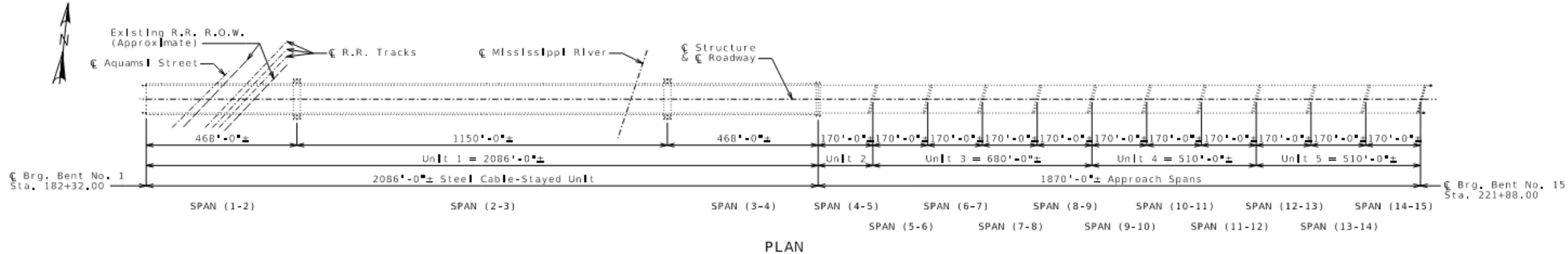


J9P3308 Pre-Bid Meeting Bill Emerson Bridge Rehabilitation

Project Overview

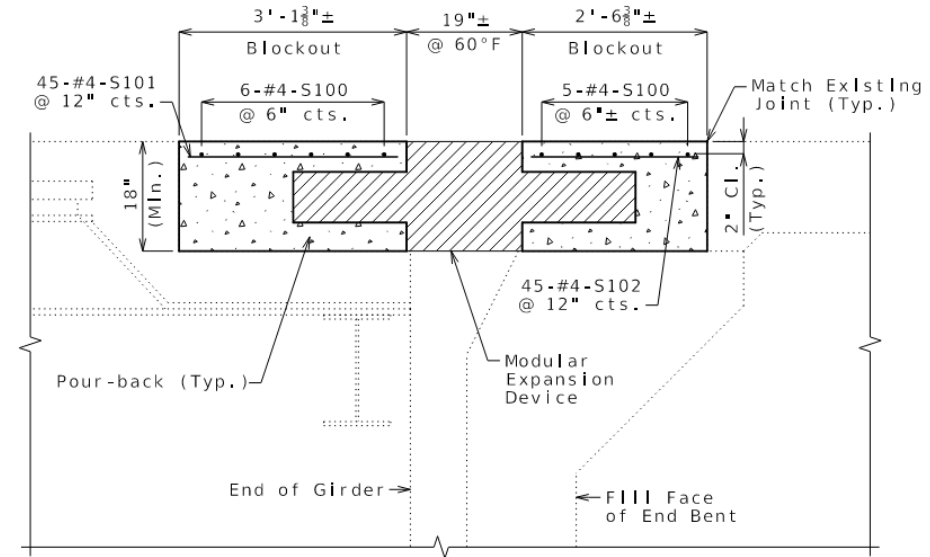


GENERAL ELEVATION



Bridge Repairs

Modular Joint Replacement at Bent No. 15

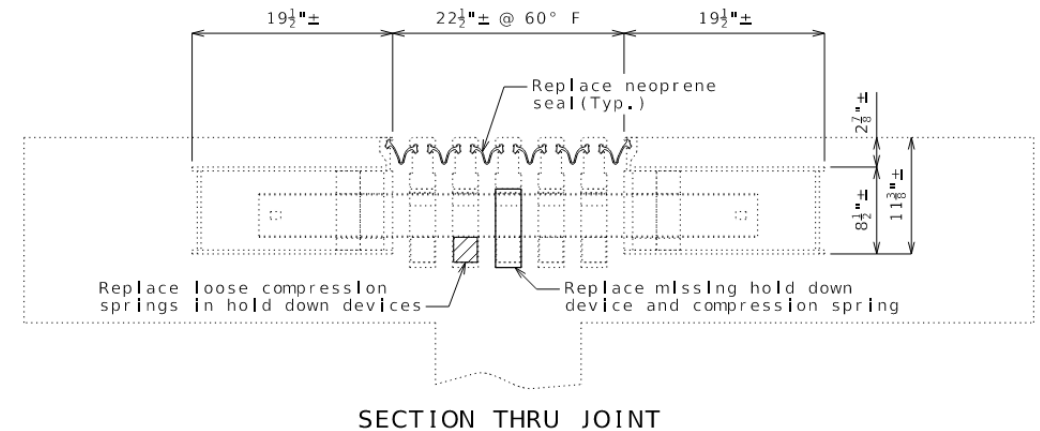
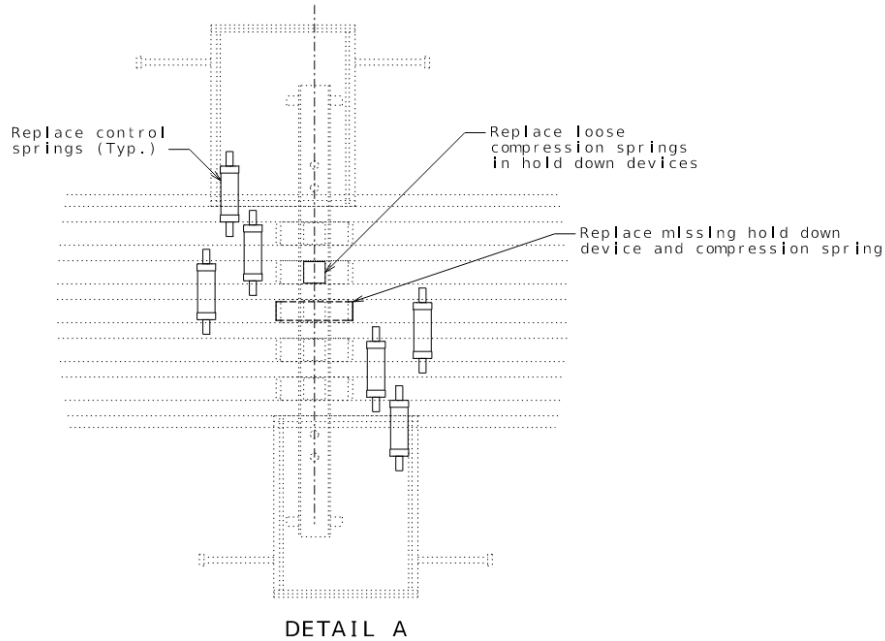


SECTION A-A

Notes:
Reinforcing steel protruding into blockouts not shown for clarity.
Quantity of #4-S bars shown for one modular expansion device.
There are two modular expansion devices.

Bridge Repairs

Modular Joint Repair at Bent No. 4



Bridge JSP:

- K. Remove and Replace Modular Joint Hold Down Springs
- L. Remove and Replace Modular Joint Control Springs
- P. Remove and Replace Modular Joint Seal

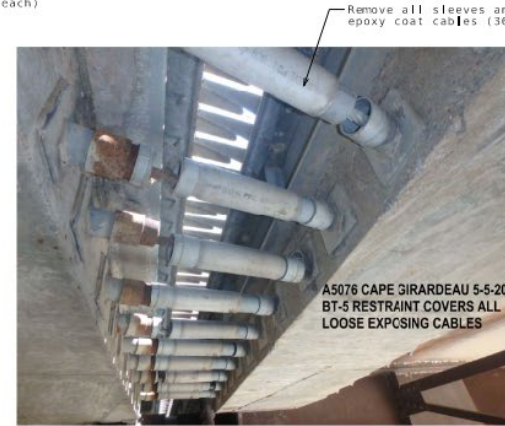
Bridge Repairs

Misc. Repairs

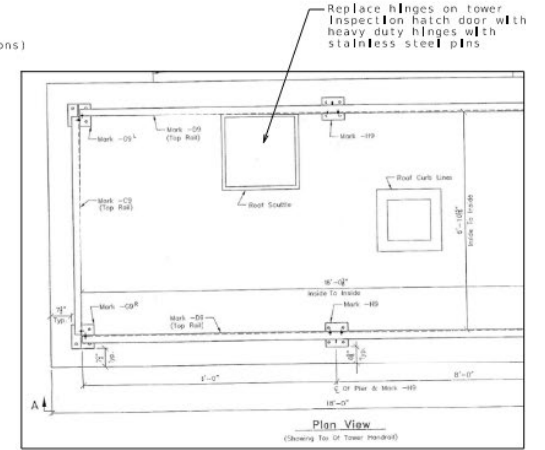
- Conduit Repairs
- Restrainer Cable Sheath
- Tower Inspection Hatch
- Lights on bridge



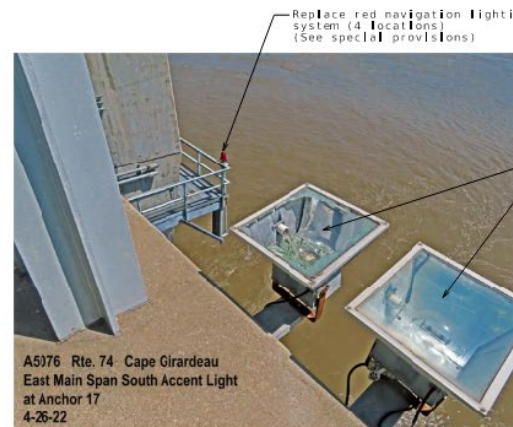
CONDUIT REPAIRS AT EXPANSION JOINTS
(Bents No. 1, 4, 5, 9, 12 and 15)



RESTRAINER CABLE SHEATH REPAIRS AT BENT NO. 5



NORTH TOWER INSPECTION HATCH AT BENT NO. 2



A5076 Rte. 74 Cape Girardeau
East Main Span South Accent Light
at Anchor 17
4-26-22

LIGHT STYLE NO. 1



A5076 Rte. 74 Cape Girardeau
West Main Span North Accent Light
at Anchor #25
4-27-22

LIGHT STYLE NO. 2

Bridge JSP:

- I. Replace Conduit and Junction Boxes
- J. Repair Restrainer Cable Sheath
- R. Remove and Replace Tower Inspection Hatch Door Hinges

Bridge Repairs

Lighting

- Navigation Lighting
- Bridge Lighting



Pier No. 2 Controllers



Pier No. 3 Controllers



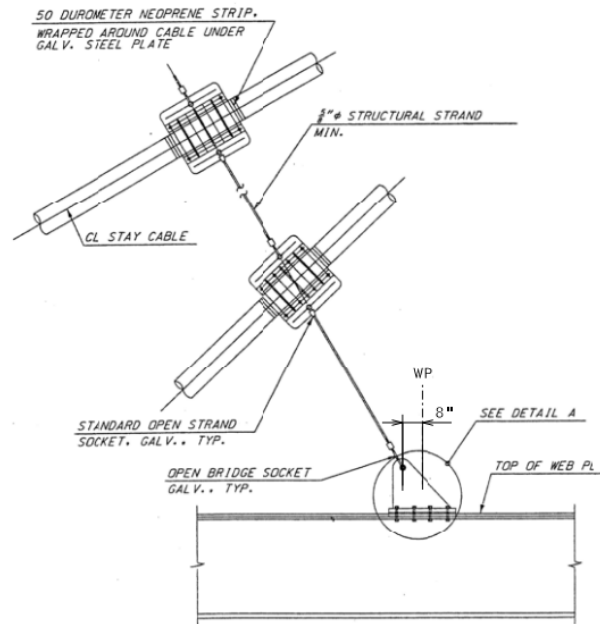
Interconnect Panel

Bridge JSP:

S. Navigation Lighting System
T. Bridge Lighting

Bridge Repairs

Reset Cable Ties

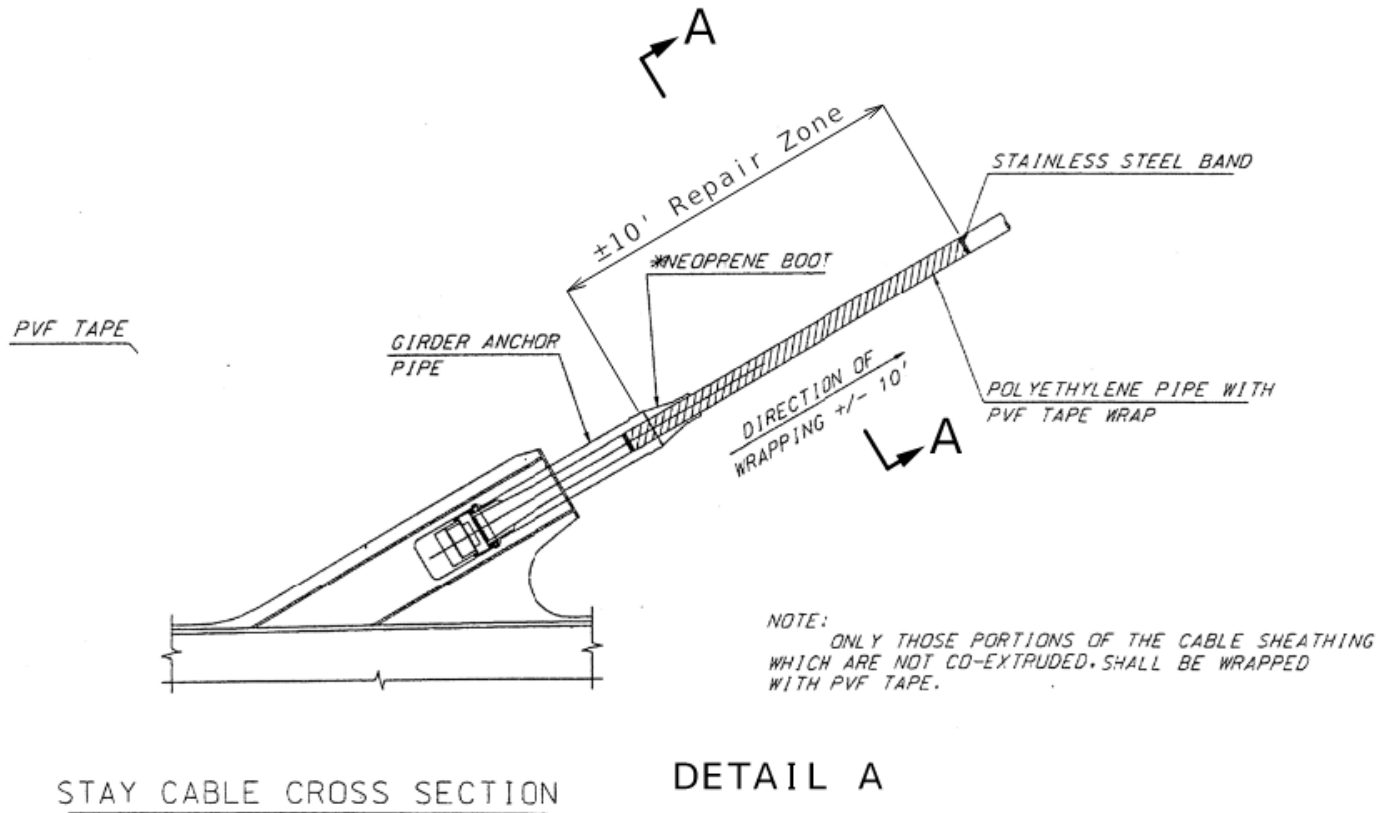


CABLE TIE DETAIL



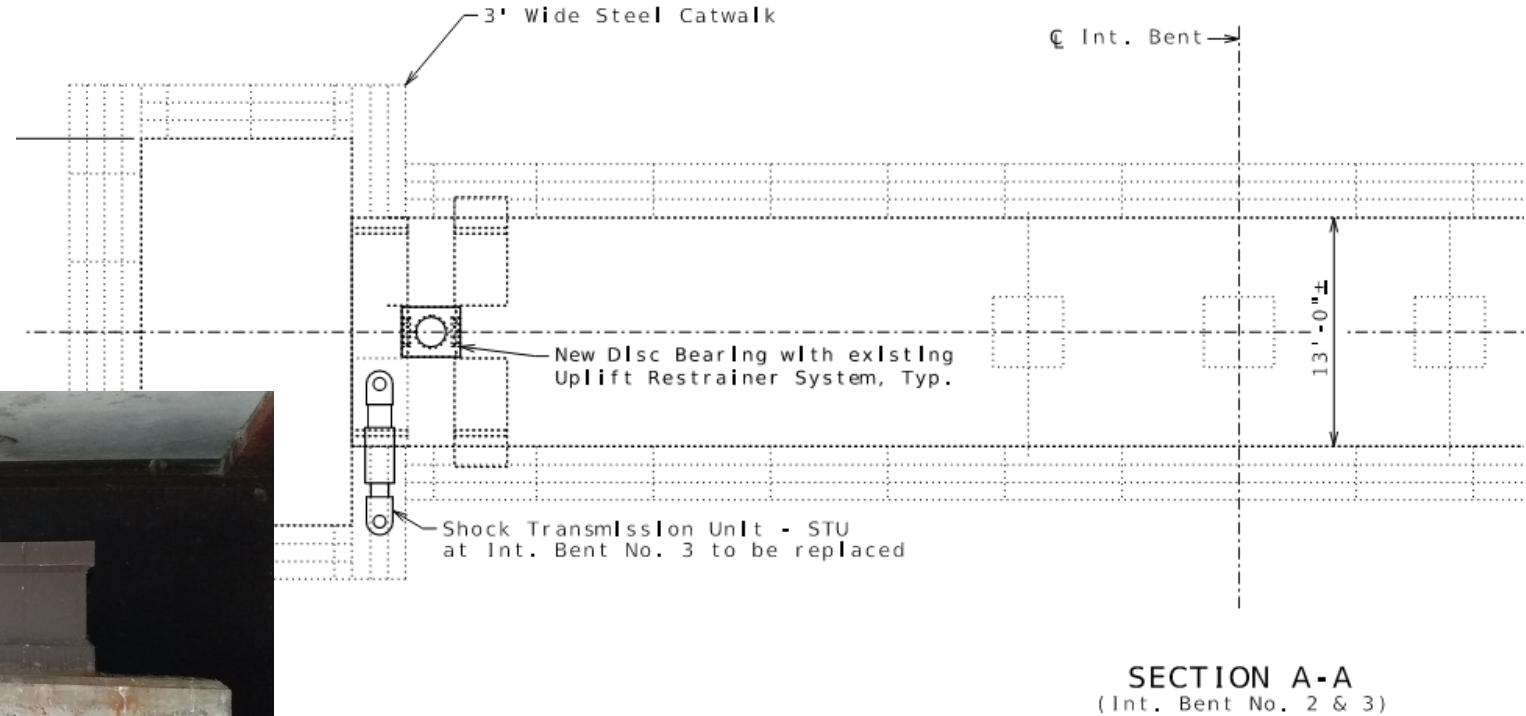
Bridge Repairs

Stay Cable Repairs



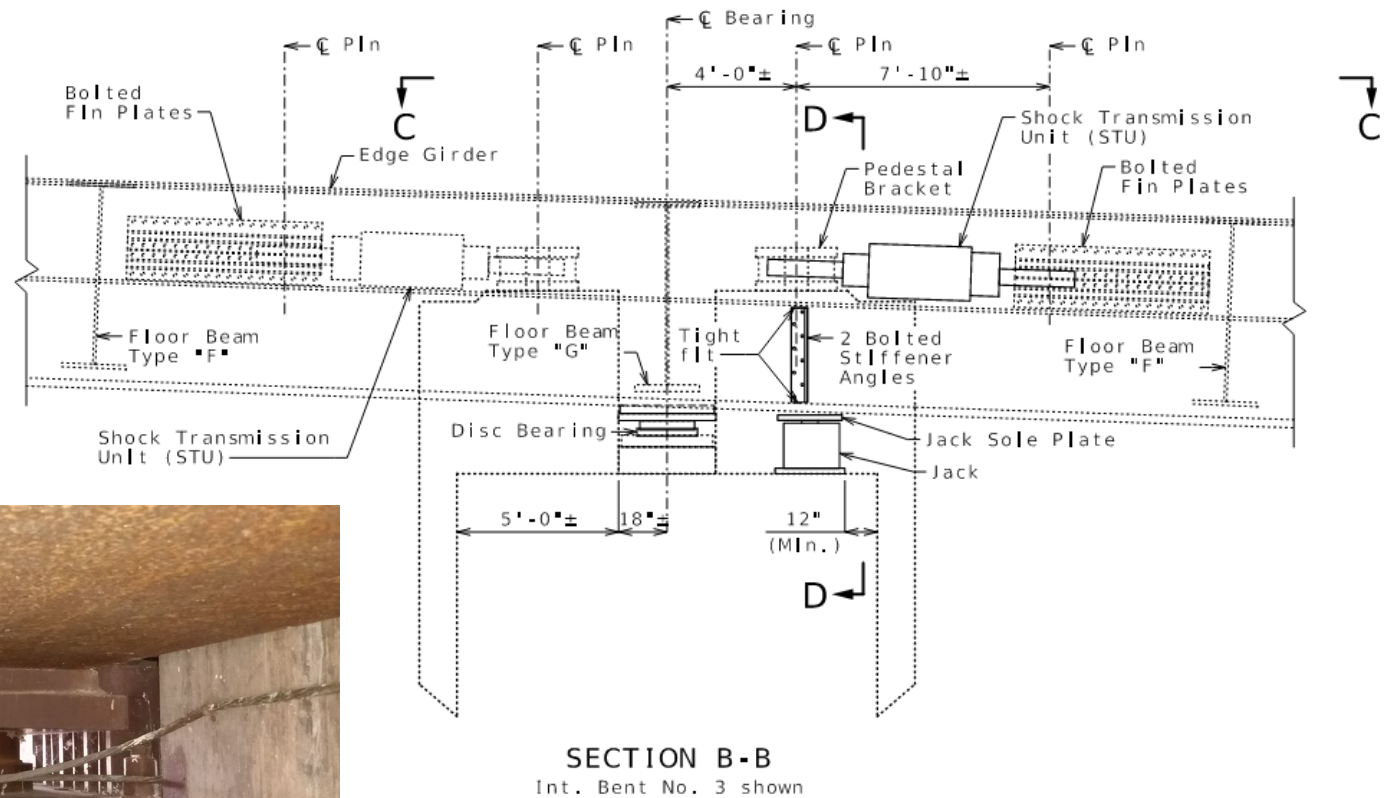
Bridge Repairs

Shock Transmission Unit Replacement



Bridge Repairs

Bearing Replacement

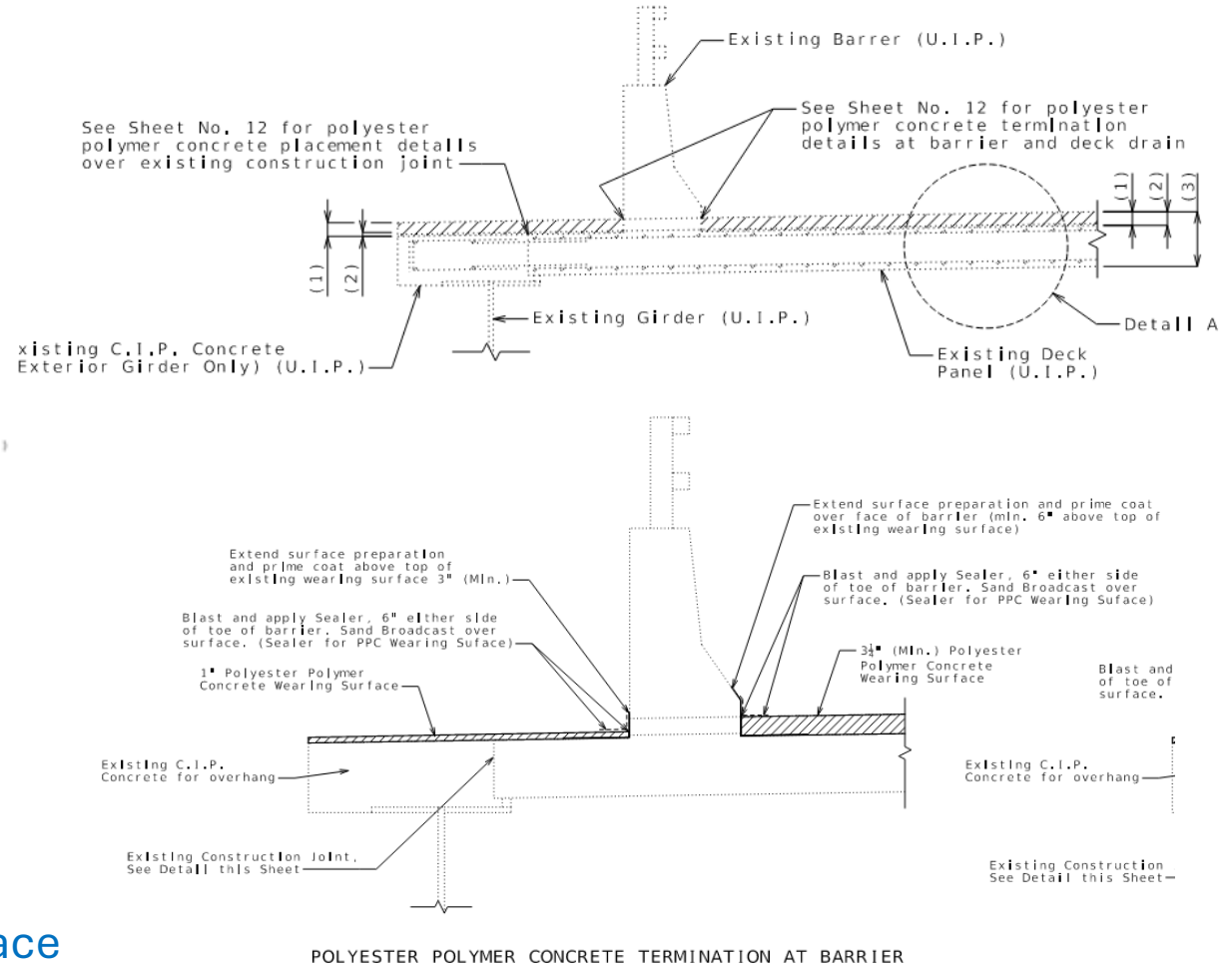
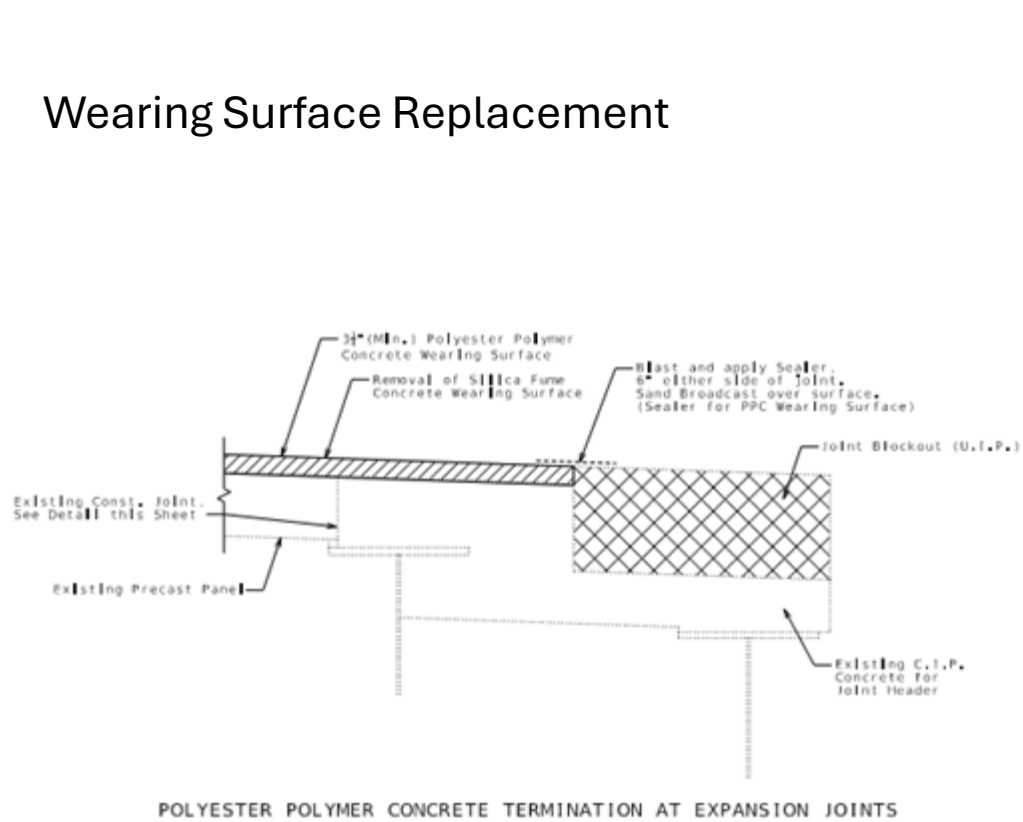


Bridge JSP:

- B. Removal of Existing Bearings
- N. HLMR Bearings

Bridge Repairs

Wearing Surface Replacement

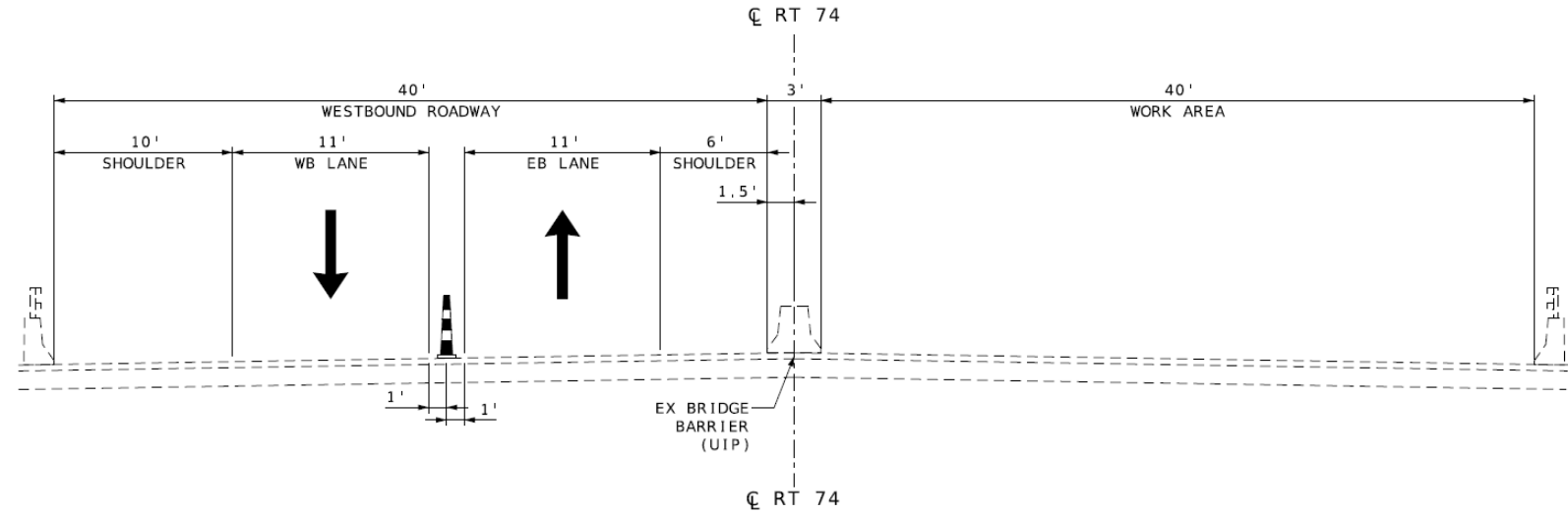


Bridge JSP:
G. Polyester Polymer Concrete Wearing Surface
H. Sealer for PPC Wearing Surface

Roadway / MOT

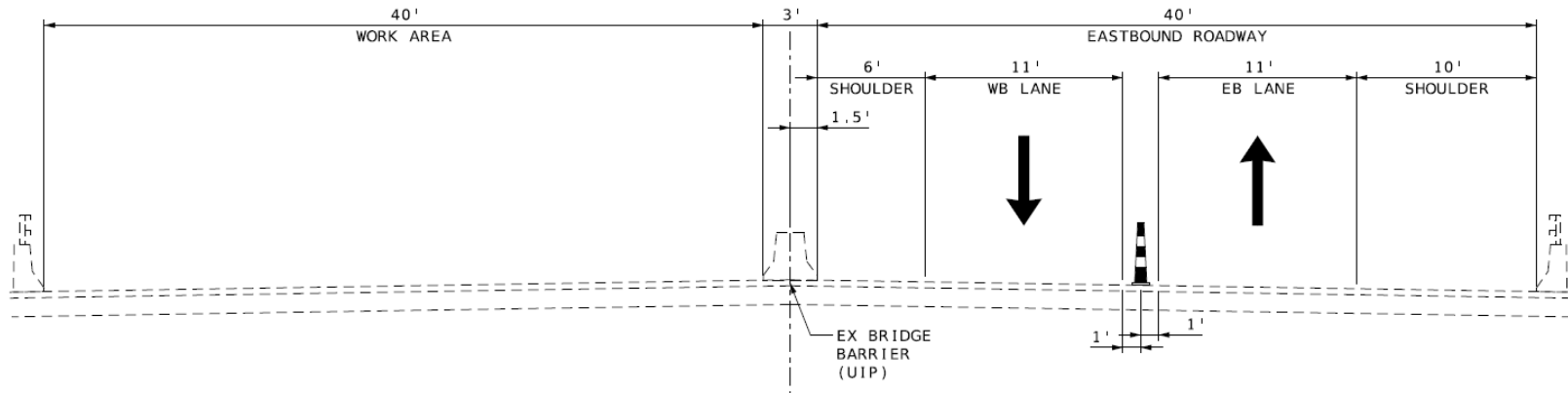
Stage 1

- EB Closure



Stage 2

- WB Closure



Railroad

BNSF Railroad

- West end of bridge



Utilities

- AT&T
- Zayo Fiber Solutions



Environmental

Migratory Birds

Bat Roosting



Roadway JSP:

- I. Restrictions for Migratory Birds
- J. Bat Roosting on Bridges



Job Special Provisions

Roadway JSP's

- A. General - Federal
- B. Contract Liquidated Damages
- C. [Work Zone Traffic Management](#)
- D. Emergency Provisions and Incident Management
- E. Project Contact for Contractor/Bidder Questions
- F. Liquidated Damages Specified
- G. [Utilities](#)
- H. Contractor Quality Control
- I. [Restrictions for Migratory Birds](#)
- J. [Bat Roosting on Bridges](#)
- K. Miscellaneous Signing Requirements
- L. Removal and Delivery of Existing Signs
- M. [Special Provisions For Protection of BNSF Railway Company Interests](#)
- N. DBE Prompt Payment Reporting
- O. Supplemental Revisions



Job Special Provisions

Bridge JSP's

- A. Construction Requirements
- B. Removal of Existing Bearings
- C. Rapid Set Concrete Patching Material – Horizontal Repairs
- D. Rapid Set Concrete Patching Material – Vertical and Overhead Repairs
- E. Epoxy Pressure Injecting
- F. Shotcrete Concrete Repair
- G. Polyester Polymer Concrete Wearing Surface
- H. Sealer for PPC Wearing Surface
- I. Replace Conduit and Junction Boxes
- J. Repair Restrainer Cable Sheath



Job Special Provisions

Bridge JSP's

- K. Remove and Replace Modular Joint Hold Down Springs
- L. Remove and Replace Modular Joint Control Springs
- M. Remove and Replace Shock Transmission Unit
- N. HLMR Bearings
- O. Modular Expansion Joint System
- P. Remove and Replace Modular Joint Seal
- Q. Clean Expansion Joints
- R. Remove and Replace Tower Inspection Hatch Door Hinges
- S. Navigation Lighting System
- T. Bridge Lighting
- U. Repair Cable Protective Sheathing



Schedule

Letting	January 17, 2025
Award	February 5, 2025
Notice to Proceed	March 2025
Completion Date	June 1, 2026



Questions?

Tim Pickett, PE
District Design Engineer
Missouri Department of Transportation
573-472-9003
timothy.pickett@modot.mo.gov

Stacy McMillan, PE
Structural Liaison Engineer
Missouri Department of Transportation
573-526-0250
stacy.mcmillan@modot.mo.gov