

Bridge Number:

K0983

Route/County:

67 / Butler

Asbestos-Containing Material Present?

Yes: ☐

No: ☒

If yes, see report for location(s).

Structural Steel Present?

Yes: ☒

No: ☐

If No, then skip the following.

Lead-Based Paint (LBP) Present?

Yes: ☒

No: ☐

Trusses LBP?

Yes: ☐ No: ☐

Girder LBP?

Yes: ☐ No: ☐

Railing LBP?

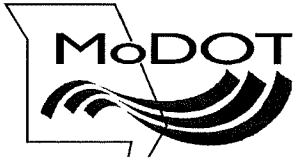
Yes: ☐ No: ☐

Pile LBP?

Yes: ☐ No: ☐

Brackzet on pier

yes ☒



## MEMORANDUM

### Missouri Department of Transportation Construction and Materials Central Laboratory

**TO:** TMS

**FROM:** Leonard Vader *Leonard Vader*  
Environmental Chemist

**DATE:** May 15, 2019

**SUBJECT:** Materials  
Asbestos Inspection & Heavy Metal Paint Survey  
Route 67  
Bridge K-0983  
Butler County

We are providing you with the results of the inspection on the above referenced bridge. The inspection report contains an asbestos and a heavy metals survey. The asbestos inspection included identifying suspect asbestos-containing material and NVLAP accredited testing to confirm the presence of asbestos.

Form T746 – This will show if samples were taken, where from, and, if the sample was found to contain asbestos, our estimated quantity of material present. Under the column “Friability Category” this is the meaning for the following:

N-ACM – No asbestos detected.

I NF – Asbestos is present. Material shall be handled carefully by a licensed abatement worker and kept wet if removing as part of a maintenance activity.

II NF – Asbestos is present. If removal is required for the maintenance activity, use an abatement contractor.

In accordance with Missouri Department of Natural Resources’ Technical Bulletin “Managing Construction and Demolition Waste” dated January 31, 2003, a heavy metal paint survey has been performed on the above referenced bridge. This survey includes locating concrete which has been painted with something other than traffic paint or graffiti, and testing the painted surface(s) to determine if hazardous heavy metals are present. If the bridge is being removed completely, or the maintenance repairs include removing the painted concrete, then, non-hazardous painted concrete may be used as clean fill materials, if properly handled. You must contact the Central Office Design Division for proper handling of the reported painted surfaces.

Although our survey included observing and sampling all accessible areas, it is possible that potentially hidden asbestos-containing materials may exist within the structure. Should you have any questions regarding these reports, please contact me at (573) 751-9252.

sm/lv

[http://sharepoint/systemdelivery/cm/chemicallab/environmental/shared documents/asbestos/districts/southeast \(se\)/mt/k0983/k0983 asbestos cover letter.docx](http://sharepoint/systemdelivery/cm/chemicallab/environmental/shared%20documents/asbestos/districts/southeast(se)/mt/k0983/k0983%20asbestos%20cover%20letter.docx)

Attachments

N-ACM = Non-Asbestos Containing Material  
NAFD = No Asbestos Fiber Detected \* = Tested By Point Count Procedure  
I NF = Category I Nonfriable

**Nonfriable Asbestos-Containing Materials**  
(Abatement not required if not made friable during demolition.)

67

N/A

SE

Butler

May 17, 2019

Bridge K-0983

**TESTED BY:**

Leonard Vader

**CERTIFICATION #:**

7020101818MOIR2672

**SITE ADDRESS:**

## Over Neelyville Drain Ditch

TYPE(S) OF STRUCTURE(S):

## Bridge

[illegible]

**All necessary work to handle this material is the contractor's responsibility.**

I NF = Category I Nonfriable



**MISSOURI DEPARTMENT OF TRANSPORTATION  
CONSTRUCTION AND MATERIALS  
Metals Survey Report of Painted Concrete, Block, Brick Surfaces for Clean Fill Purposes**

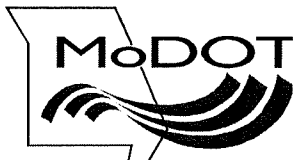
**ROUTE:**  
**MODOT JOB NO.:**  
**DISTRICT:**  
**COUNTY:**  
**SURVEYED BY:**  
**DATE OF SURVEY:**

67
N/A
SE
Butler
Robert Marshall <i>RM</i>
April 23, 2019

TESTED BY:	N/A
DATE OF TESTS:	N/A
PARCEL NO.:	Bridge
SITE ADDRESS:	Over
TYPE(S) OF STRUCTURE(S):	Bridge

[illegible]

All results are by XRF unless otherwise indicated: a = USEPA SW-846 Method 3050 b = USEPA SW-846 Method 7471



## MEMORANDUM

### Missouri Department of Transportation Construction and Materials Central Laboratory

**TO:** TMS

**FROM:** Robert Marshall *RM*  
Environmental Chemist, Lead License #161121-300005166

**DATE:** May 29, 2019

**SUBJECT:** Materials  
Job No. N/A  
Route 67/Butler County  
Bridge K-0983

On April 23, 2019, a Lead Based Paint (LBP) survey was performed on the subject bridge. The following result shows the existing paint system is LBP. Therefore any painting project will be subject to DHSS notification and regulation:

	Bracket on pier
	19MRSM128
Lead (Pb)	> 5.0 mg/cm <sup>2</sup> (Positive)

In addition, a heavy metals screening was also performed on the painted structural steel. The following results are for informational purposes only:

	Bracket on pier
	19MRSM127
Arsenic (As)	62287 ppm **
Chromium (Cr)	66 ppm
Lead (Pb)	550194 ppm
Cadmium (Cd)	957 ppm
Selenium (Se)	335 ppm
Barium (Ba)	119 ppm
Mercury (Hg)	< LOD
Silver (Ag)	< LOD

\*< LOD = below the detection limit of the instrument

\*\*ppm = parts per million

Should any further screenings be required, please contact Todd Bennett, Chemical Laboratory Director, at (573) 751-1045.

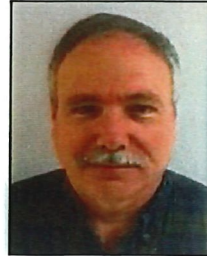
Should you have any questions regarding the screenings, feel free to call me at (573) 751-9252.

rm/lv

[http://sp/sites/cm/chemicallab/environmental/shared documents/asbestos/districts/southeast \(se\)/mt/k0983/k0983 lbp letter.docx](http://sp/sites/cm/chemicallab/environmental/shared%20documents/asbestos/districts/southeast%20(se)/mt/k0983/k0983%20lbp%20letter.docx)

CERTIFICATION NUMBER:  
**7020101818MOIR2672**

THIS CERTIFIES  
**Leonard A. Vader**  
HAS COMPLETED THE CERTIFICATION  
REQUIREMENTS FOR  
**Inspector**



APPROVED: **10/22/2018**  
EXPIRES: **10/22/2019**

TRAINING DATE: **10/18/2018**

  
Director of Air Pollution Control Program

CERTIFICATION NUMBER:  
**7020101818MOIR18860**

THIS CERTIFIES  
**Robert S Marshall**  
HAS COMPLETED THE CERTIFICATION  
REQUIREMENTS FOR  
**Inspector**



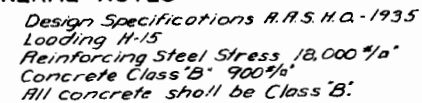
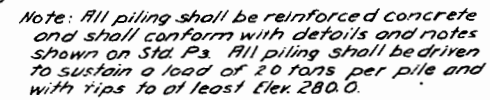
APPROVED: **10/22/2018**  
EXPIRES: **10/22/2019**

TRAINING DATE: **10/18/2018**

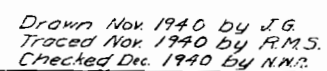
  
Director of Air Pollution Control Program



FED. ROAD DIST. NO.	STATE	FED. AID PROJ. NO.	FISCAL YEAR	SHEET NO.	TOTAL SHEETS
5	SW-PA38-C1(2) MO.	(USG7)	19		



ESTIMATED QUANTITIES			
Item	Superstr.	Substruct.	Total
Class I Excavation for Structures Cu.Yds.		40	40
Class "B" Concrete (Handrail) Cu. Yds.	87		87
Class "B" Concrete Cu.Yds.	105.5	41.4	146.9
Reinforcing Steel Lbs.	13020	3590	16610
Concrete Piles in Place Lin. Ft.		840	840



Sheet No. 1 of 3

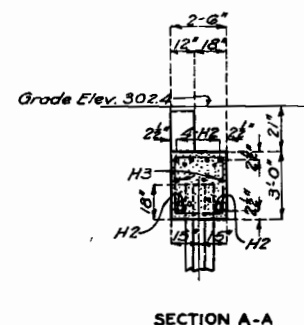
B.M. #79 Elev. 300.79 N.I.R. 24" Walnut  
192' Rt. Sta 884+92 M. S. L. Datum.

STATE ROAD FROM JUNCTION ROUTE 14 SOUTH  
ABOUT 0.8 MILES WEST OF NEELYVILLE  
PROJECT SN-FA56-C1(3) (US67) STA. 886+12.5

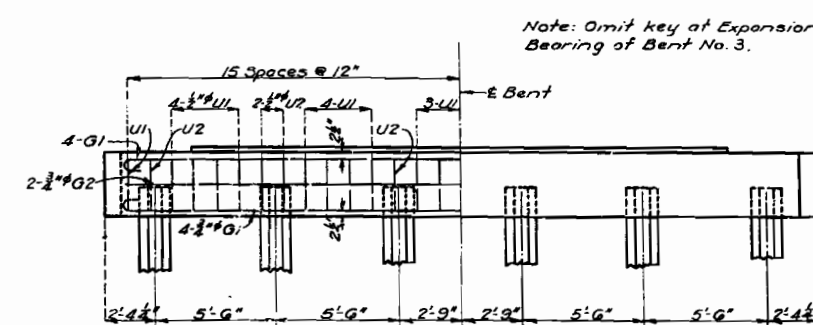
SUBMITTED BY *N.R. Lark* DATE *12/6/40*  
BRIDGE ENGINEER  
APPROVED BY *C.W. Brown* DATE *12/6/40*  
CHIEF ENGINEER

STL. P-3
STD. C-110R2
K-983

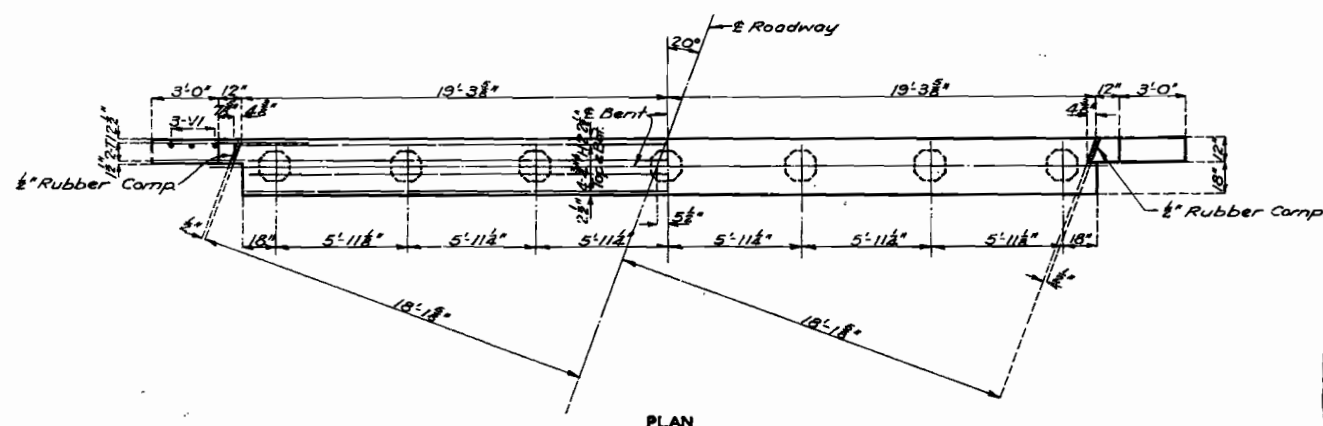
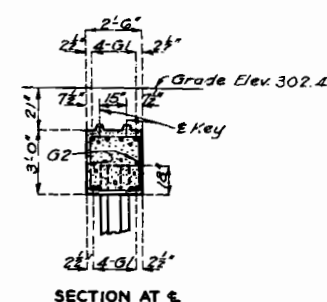
FED. ROAD DIST. NO.	STATE	FED. AID PROJ. NO.	FISCAL YEAR	SHEET NO.	TOT. SHEET
5	MO.	SN-FA58-CIR (U.S. 97)	19		



### ELEVATION

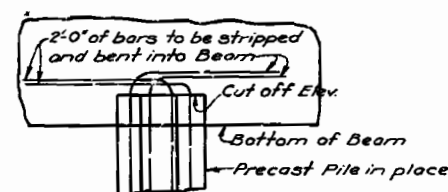


### ELEVATION

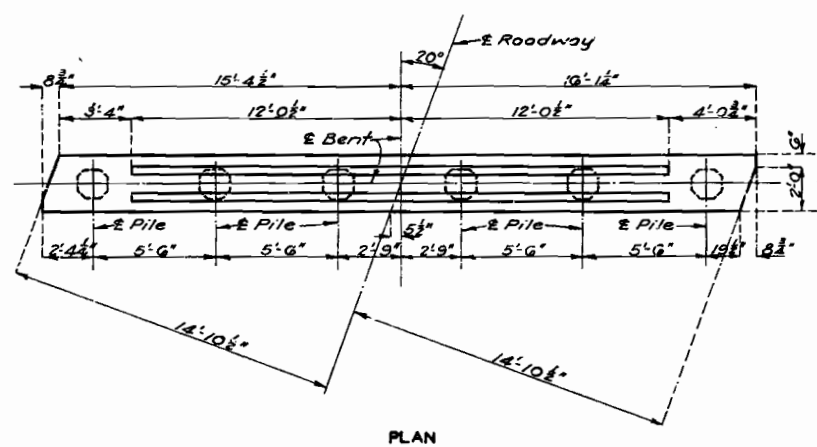


### PLAN

### DETAILS OF END BENTS NO. 1 & 4



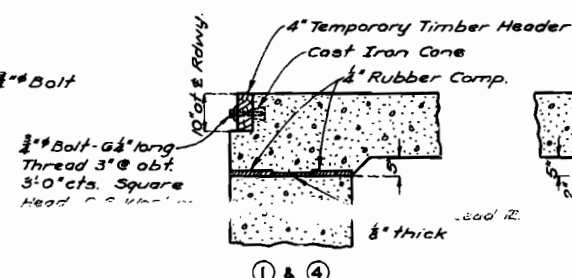
DETAIL OF PRECAST FILE  
IN BEAM



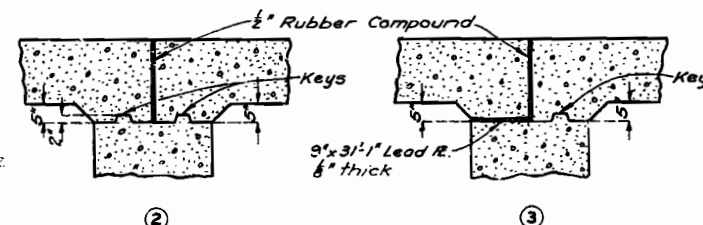
### PLAN

### DETAILS OF INTERIOR BENTS NO. 2 & 3

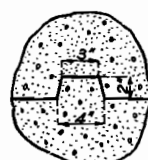
### DETAIL OF CAST IRON CONE



① ② ④



②



### DETAIL OF KEY

*Note: Cost of Temporary Timber Headers complete in place and cost of lead plates shall be included in price bid for concrete.*

### DETAILS OF BEARINGS

*Note: This drawing is not to scale. Follow dimensions*

Sheet No. 2 of 3.

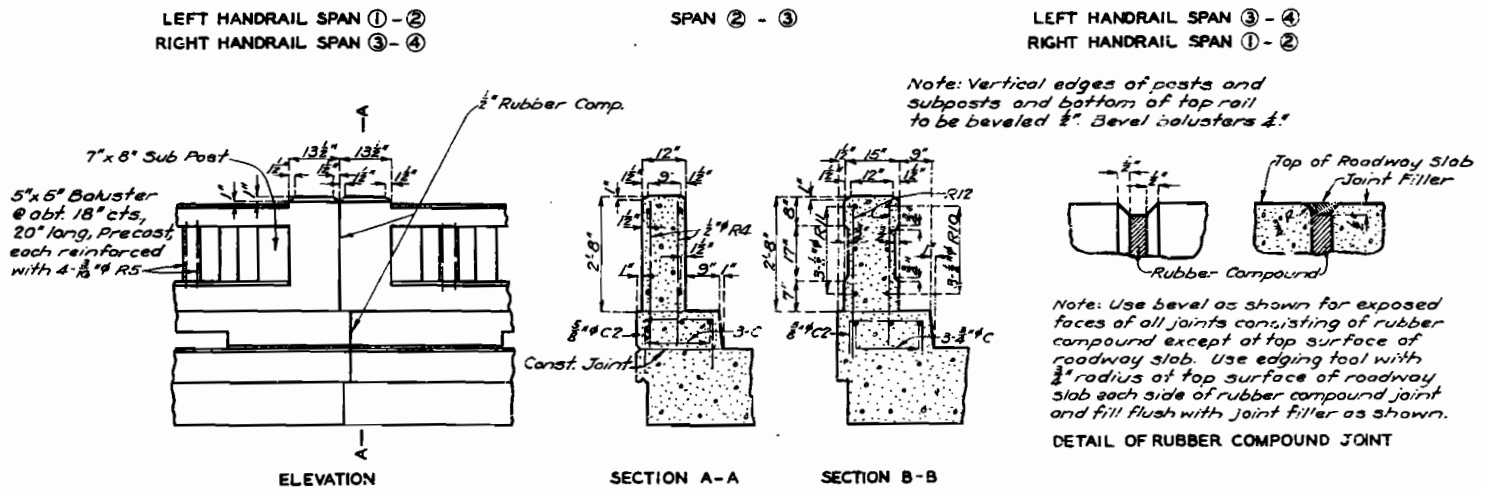
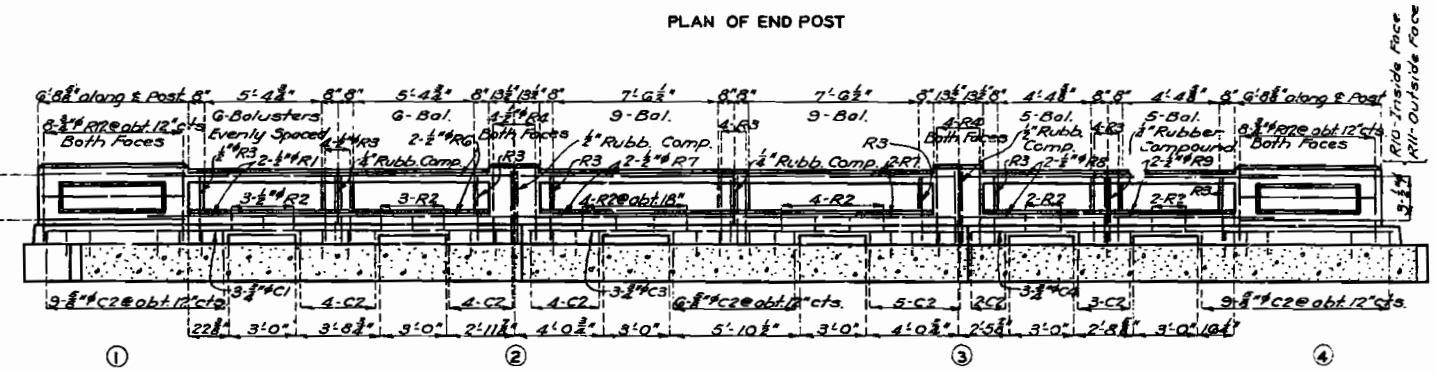
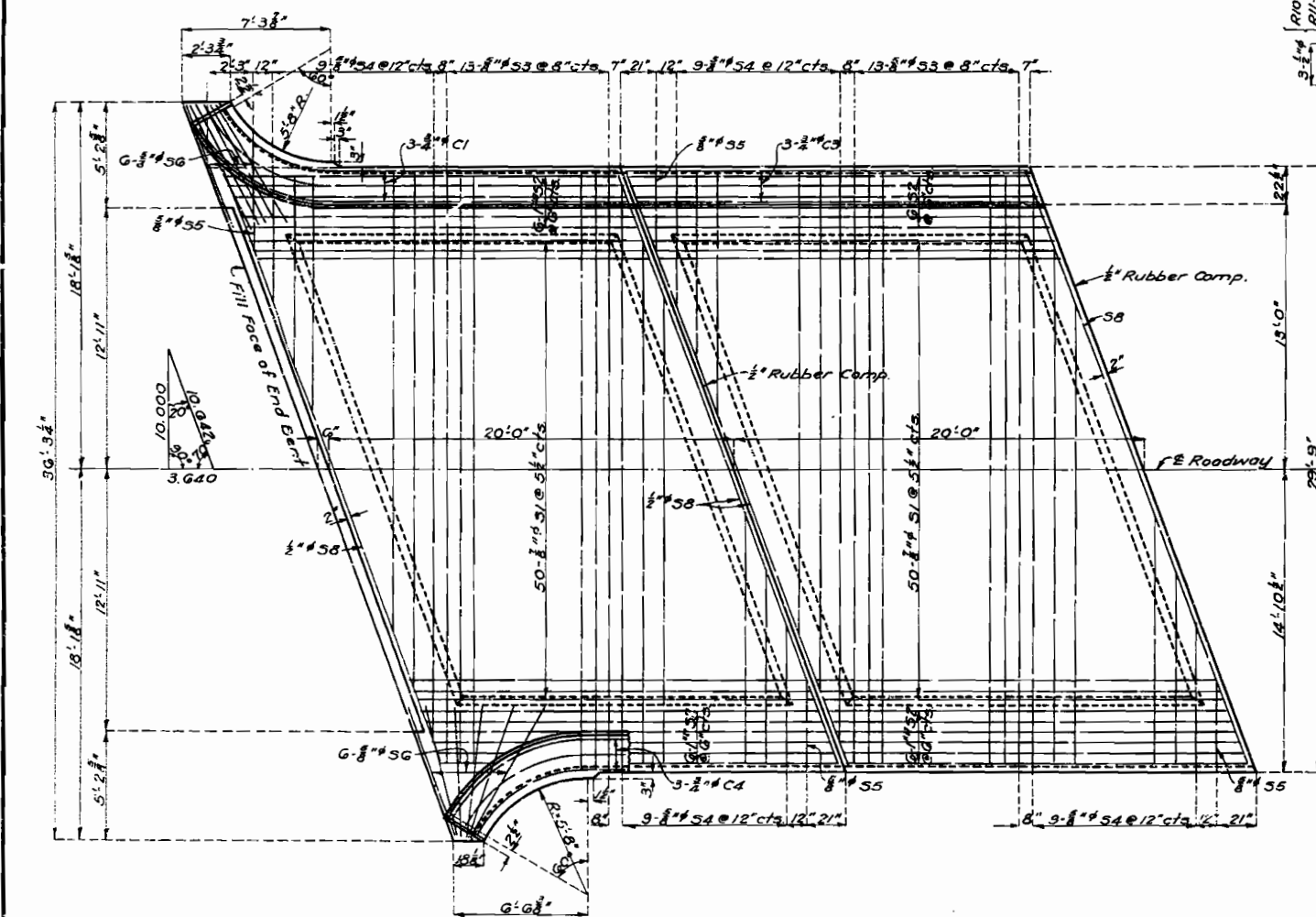
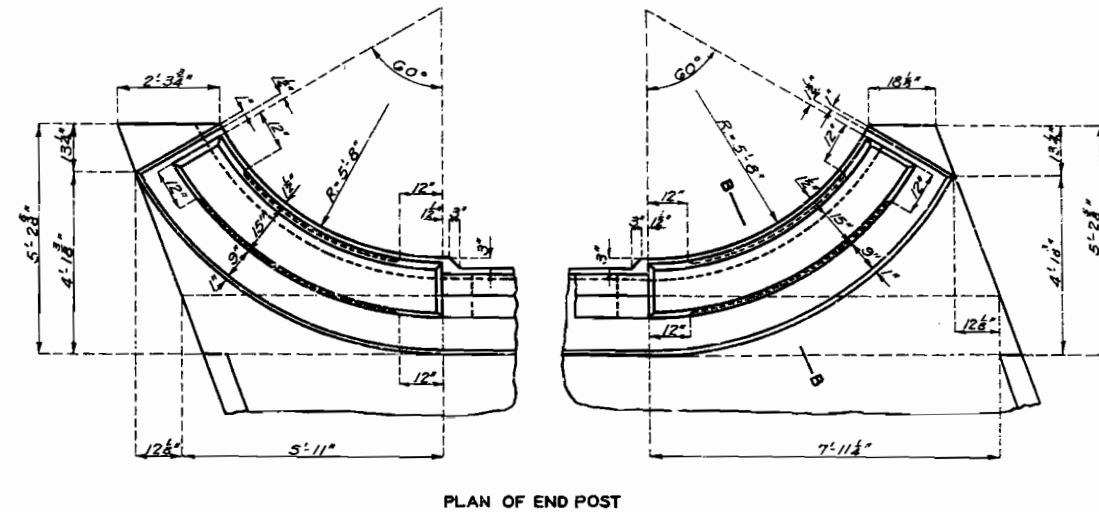
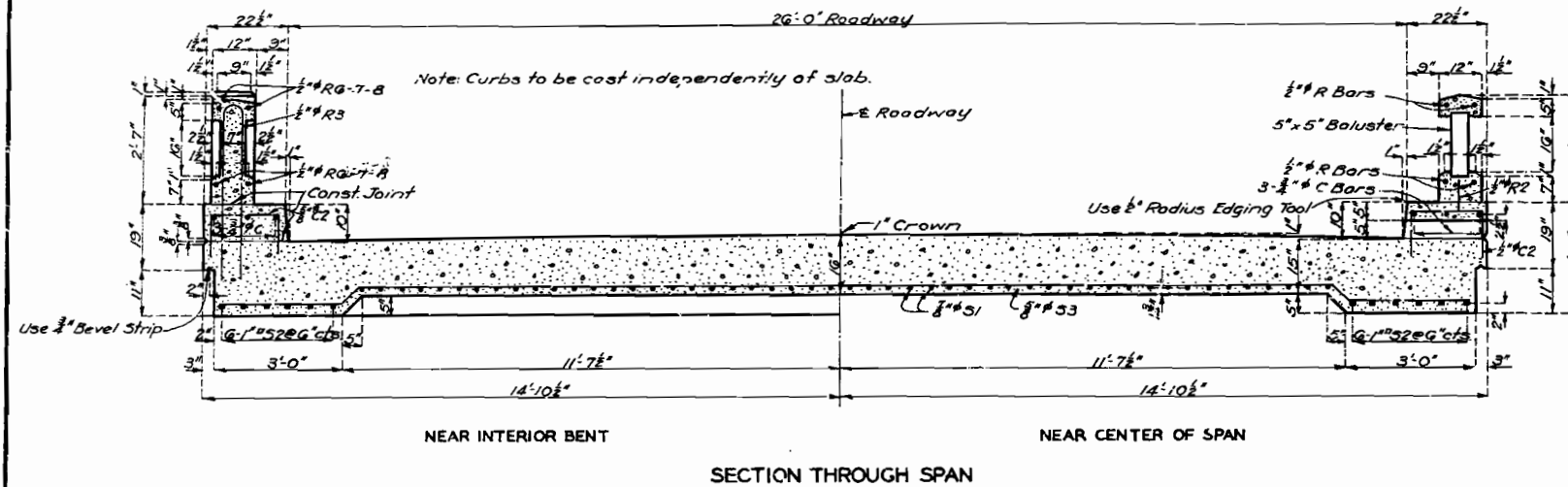
STATE ROAD FROM JUNCTION ROUTE 14 SOUTH  
ABOUT 0.8 MILES WEST OF NEELYVILLE  
PROJECT SN-FA58-C1(3) (US67) STA. 886+12.5

BUTLER COUNTY

K-983

# MISSOURI STATE HIGHWAY DEPARTMENT

FED. ROAD DIST. NO.	STATE	FED. AID PROJ. NO.	FISCAL YEAR	SHEET NO.	TOTAL SHEETS
5	MO.	SN-FA58-C1(3)	19		



DETAILS OF INTERIOR POST

BRIDGE OVER NEELYVILLE DRAINAGE DITCH  
STATE ROAD FROM JUNCTION ROUTE 14 SOUTH  
ABOUT 0.6 MILES WEST OF NEELYVILLE  
PROJECT SN-FA58-C1(3) (US 67) STA. 886+12.5  
BUTLER COUNTY


Drawn Nov. 1940 by J.G.  
Traced Nov. 1940 by G.W.  
Checked Dec. 1940 by H.W.R.


Note: This drawing is not to scale. Follow dimensions.


Sheet No. 3 of 3

K-983

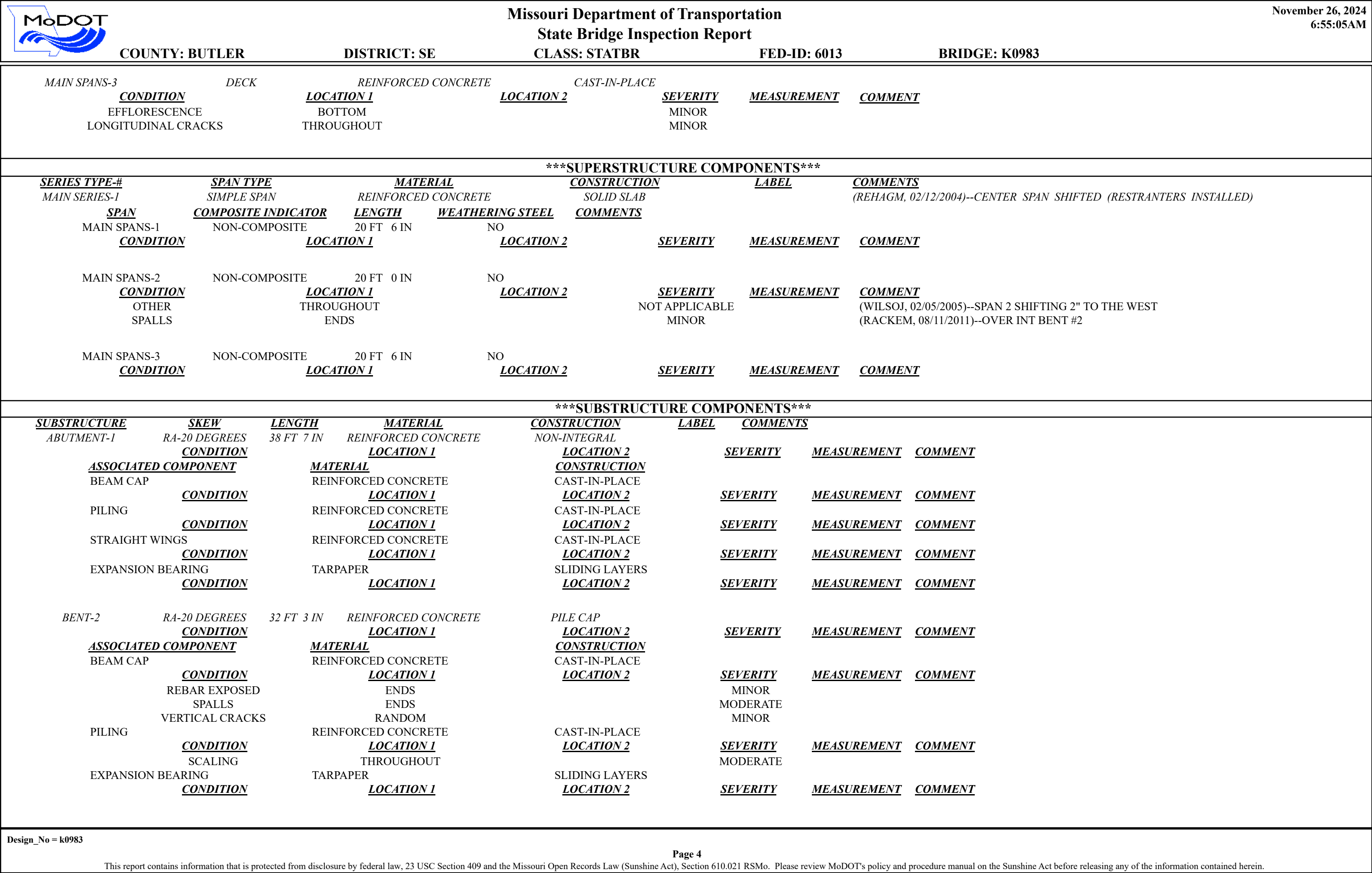
345

		<div>Missouri Department of Transportation</div> <div>State Bridge Inspection Report</div>				<div>November 26, 2024</div> <div>6:55:05AM</div>			
COUNTY: BUTLER		DISTRICT: SE		CLASS: STATBR		FED-ID: 6013		BRIDGE: K0983	
***GENERAL STRUCTURE INFORMATION***							***BRIDGE INSPECTION INFORMATION***		
<div>ROUTE: US67S</div> <div>FEATURE: NEELYVILLE DRAIN D</div> <div>STATUS: A-OPEN</div> <div>LOG MILE: 192.232</div> <div>DETOUR: 26.00 MILES</div> <div>NHS: YES</div> <div>BUILT: 1941</div> <div>REHAB:</div> <div>LOCATION: S 9 T 22 R 5 E</div> <div>LATITUDE: 36 33 44.62 (DMS)</div> <div>LONGITUDE: 90 31 15.55 (DMS)</div>		<div># SPANS: 3</div> <div>LANES ON: 2</div> <div>LANES UNDER: 0</div> <div>COMPASS DIRECTION: NORTH to SOUTH</div> <div>DIRECTION OF TRAFFIC: 2-WAY TRAF</div> <div>FUNCTIONAL CLASS: RL-PRINCIPAL ARTERIAL</div> <div>NBI OWNER: MODOT</div> <div>NBI MAINTAINED: MODOT</div> <div>MAINTENANCE DISTRICT: SE</div> <div>MAINTENANCE COUNTY: BUTLER</div> <div>SUB AREA: 7H38</div>		<div>PLACE CODE: 51392 NEELY</div> <div>LENGTH: 61 FT 0 IN</div> <div>MAXIMUM SPAN: 20 FT 6 IN</div> <div>APPROACH ROADWAY: 24 FT 0 IN</div> <div>CURB TO CURB: 26 FT 0 IN</div> <div>OUT TO OUT: 29 FT 10 IN</div> <div>AADT: 7121</div> <div>AADT YEAR: 2023</div> <div>AADT TRUCK: 26.7%</div> <div>FUTURE AADT: 12462</div> <div>FUTURE AADT YEAR: 2043</div>		<div>DATE: 02/21/2023</div> <div>RESPONSIBILITY: DISTRICT</div> <div>FREQUENCY: 24</div> <div>CALCULATED INTERVAL**: 24</div> <div>TEAM LEADER:</div> <div>ELEMENT: YES</div> <div>INSPECTOR 2: STEVE RIGHTNOWAR</div> <div>INSPECTOR 4:</div> <div>INSPECTOR 3:</div> <div>** When calculated interval exceeds the frequency, a justification comment per BIRM is required.</div>			
						GENERAL INSPECTION COMMENTS			
***FRACTURE CRITICAL INSPECTION INFORMATION***					***INDEPTH INSPECTION INFORMATION***				
<div>DATE:</div> <div>FREQUENCY:</div> <div>TEAM LEADER:</div> <div>INSPECTOR 2:</div> <div>** When calculated interval exceeds the frequency, a justification comment per BIRM is required.</div>					<div>RESPONSIBILITY:</div> <div>CALCULATED INTERVAL**:</div> <div>INSPECTOR 3:</div> <div>INSPECTOR 4:</div> <div>CATEGORY:</div> <div>NBI:</div> <div>METHOD:</div> <div>** When calculated interval exceeds the frequency, a justification comment per BIRM is required.</div>				
FRACTURE CRITICAL INSPECTION COMMENTS					INDEPTH INSPECTION COMMENTS				
***SPECIAL INSPECTION INFORMATION***					***UNDERWATER INSPECTION INFORMATION***				
<div>DATE: 05/09/2017</div> <div>FREQUENCY: 999</div> <div>TEAM LEADER:</div> <div>INSPECTOR 2: TERRY WILSON</div> <div>** When calculated interval exceeds the frequency, a justification comment per BIRM is required.</div>					<div>RESPONSIBILITY: DISTRICT</div> <div>CALCULATED INTERVAL**:</div> <div>INSPECTOR 3: JERRY GOODMAN</div> <div>INSPECTOR 4:</div> <div>CATEGORY: DAMAGE POST INCIDE</div> <div>NBI: NO</div> <div>METHOD: VISUAL</div> <div>** When calculated interval exceeds the frequency, a justification comment per BIRM is required.</div>				
SPECIAL INSPECTION COMMENTS					UNDERWATER INSPECTION COMMENTS				
OTHER SPECIAL INSPECTIONS					OTHER UNDERWATER INSPECTIONS				
<div>DATE</div> <div>FREQUENCY</div> <div>CATEGORY</div> <div>NBI</div> <div>CALCULATED INTERVAL</div> <div>RESPONSIBILITY</div> <div>METHOD</div> <div>04/23/2014</div> <div>120</div> <div>CHANNEL CROSS SECTIONS</div> <div>NO</div> <div>DISTRICT</div> <div>WT TAPE</div>					<div>DATE</div> <div>FREQUENCY</div> <div>CATEGORY</div> <div>NBI</div> <div>CALCULATED INTERVAL</div> <div>RESPONSIBILITY</div> <div>METHOD</div>				
Design_No = k0983									
<div>Page 1</div> <div>This report contains information that is protected from disclosure by federal law, 23 USC Section 409 and the Missouri Open Records Law (Sunshine Act), Section 610.021 RSMo. Please review MoDOT's policy and procedure manual on the Sunshine Act before releasing any of the information contained herein.</div>									

		Missouri Department of Transportation				November 26, 2024	
		State Bridge Inspection Report				6:55:05AM	
COUNTY: BUTLER		DISTRICT: SE		CLASS: STATBR		FED-ID: 6013	
				BRIDGE: K0983			
***STRUCTURE POSTING***							
APPROVED CATEGORY: S-1		NO POSTING REQUIRED					
Ton 1:		Ton 2:		Ton 3:			
COMMENTS:							
FIELD CATEGORY: S-1		NO POSTING REQUIRED					
Ton 1:		Ton 2:		Ton 3:		PROBLEM:	
COMMENTS:						PROBLEM DIRECTION:	
***GENERAL COMMENTS/MAJOR RATED ITEMS***							
GENERAL COMMENTS: (BOWDEJ1, 09/05/2008)--(20'-20'-20') CONC SOLID SLAB SPANS							
[ITEM 58] DECK: 5-FAIR CONDITION				COMMENTS: (RACKEM, 08/11/2011)--MODERATE L-CRACKS W/EFFL - BOTTOM			
RATING : 03/15/2017							
[ITEM 59] SUPER: 5-FAIR CONDITION				COMMENTS: (RACKEM, 08/11/2011)--2"+ SUPERSTRUCTURE SHIFT TO WEST.			
RATING : 01/11/2011							
[ITEM 60] SUB: 5-FAIR CONDITION				COMMENTS: (RACKEM, 08/11/2011)--MODERATE SUBSTR SCALE & ABUT UDNERMINING.			
RATING : 03/15/2017							
[ITEM 61] BANK/CHANNEL: 6-WIDESPREAD MINOR DAMAGE				COMMENTS:			
RATING : 09/24/2014							
[ITEM 113] SCOUR: 8-STABLE FOR CALCULATED				COMMENTS:			
RATING : 05/18/2001							
EVALUATION TYPE :							
[ITEM 71] WATERWAY ADEQUACY: DECK ABOVE FLOOD ELEV				COMMENTS:			
RATING : 05/18/2001							
[ITEM 72] APPRRDWY ALIGNMENT: 8-VERYGOOD				COMMENTS:			
RATING : 05/18/2001							
***RAILING AND APPROACH PAVEMENT COMPONENTS AND RATINGS***							
[ITEM 36A] BRIDGE RAILING RATING: DOESNT MEET CURRNT STND-0							
RATING : 01/11/2007		COMMENTS:					
<u>MATERIAL</u>		<u>CONSTRUCTION</u>		<u>DIRECTION</u>		<u>COMMENTS</u>	
REINFORCED CONCRETE		CURB		BOTH			
REINFORCED CONCRETE		BALUSTER		BOTH			
<u>CONDITION</u>		<u>LOCATION 1</u>		<u>LOCATION 2</u>		<u>SEVERITY</u>	
VERTICAL CRACKS		RANDOM				MINOR	
						(RACKEM, 08/11/2011)--END	
[ITEM 36B] TRANSITION RAILING RATING: DOESNT MEET CURRNT STND-0							
RATING : 01/11/2007		COMMENTS:					
<u>MATERIAL</u>		<u>CONSTRUCTION</u>		<u>DIRECTION</u>		<u>COMMENTS</u>	
GALVANIZED STEEL		W-BEAM		ALL			
[ITEM 36C] APPROACH RAILING RATING: MEETS CURRENT STANDARDS-1							
RATING : 05/18/2001		COMMENTS:					
Design_No = k0983							
Page 2							
This report contains information that is protected from disclosure by federal law, 23 USC Section 409 and the Missouri Open Records Law (Sunshine Act), Section 610.021 RSMo. Please review MoDOT's policy and procedure manual on the Sunshine Act before releasing any of the information contained herein.							

		Missouri Department of Transportation				November 26, 2024	
		State Bridge Inspection Report				6:55:05AM	
COUNTY: BUTLER		DISTRICT: SE		CLASS: STATBR		FED-ID: 6013	
				BRIDGE: K0983			
<u>MATERIAL</u> GALVANIZED STEEL		<u>CONSTRUCTION</u> W-BEAM		<u>DIRECTION</u> ALL		<u>COMMENTS</u>	
[ITEM 36D] RAIL END TREATMENT RATING: MEETS CURRENT STANDARDS-1				RATING : 01/11/2007		COMMENTS:	
<u>MATERIAL</u> GALVANIZED STEEL		<u>CONSTRUCTION</u> BREKAWAY SYSTEM		<u>DIRECTION</u> ALL		<u>COMMENTS</u>	
APPROACH PAVEMENT: *Overall condition assigned for each approach pavemenet component is shown below.							
<u>MATERIAL</u> REINFORCED CONCRETE		<u>CONSTRUCTION</u> SLAB		<u>DIRECTION</u> BOTH		<u>CONDITION*</u> <u>COMMENTS</u>	
***DRAINAGE, EXPANSION DEVICES, BANK/SLOPE, AND DECK PROTECTIVE COMPONENTS***							
<u>DECK PROTECTIVE COMPONENTS:</u>							
<u>SERIES TYPE-#</u> MAIN SERIES-1		<u>COMPONENT</u> WEARING SURFACE		<u>MATERIAL</u> ASPHALT		<u>CONSTRUCTION</u> BITUMINOUS MAT	
				<u>THICKNESS</u> 2 IN		<u>YEAR APPLIED</u>	
				<u>MANUFACTURE</u>		<u>OVERALL CONDITION</u> FAIR	
<u>COMMENT:</u>							
		DECK PROTECTION		NOTAPPLICABLE		NONE	
<u>COMMENT:</u>							
		MEMBRANE		NOTAPPLICABLE		NONE	
<u>COMMENT:</u>							
<u>DRAINAGE COMPONENTS:</u>							
		<u>COMPONENT</u> DRAINAGE		<u>MATERIAL</u> REINFORCED CONCRETE		<u>CONSTRUCTION</u> CURB OUTLET	
				<u>DIRECTION</u>		<u>COMMENTS</u>	
<u>EXPANSION DEVICE COMPONENTS:</u>							
<u>SUB UNIT-#</u>		<u>SUB LABEL</u>		<u>COMPONENT</u>		<u>MATERIAL</u>	
						<u>CONSTRUCTION</u>	
						<u>GAP</u>	
						<u>YEAR APPLIED</u>	
						<u>MANUFACTURE</u>	
						<u>OVERALL CONDITION</u>	
<u>COMMENT:</u>							
<u>BANK/SLOPE PROTECTION COMPONENTS:</u>							
		<u>COMPONENT</u>		<u>MATERIAL</u>		<u>CONSTRUCTION</u>	
				<u>DIRECTION</u>		<u>COMMENTS</u>	
***DECK COMPONENTS***							
<u>SPAN TYPE-#</u> MAIN SPANS-1		<u>COMPONENT</u> DECK		<u>MATERIAL</u> REINFORCED CONCRETE		<u>CONSTRUCTION</u> CAST-IN-PLACE	
						<u>COMMENTS</u>	
<u>CONDITION</u>		<u>LOCATION 1</u>		<u>LOCATION 2</u>		<u>SEVERITY</u>	
DIAGONAL CRACKS		ENDS				MODERATE	
EFFLORESCENCE		RANDOM				MODERATE	
LONGITUDINAL CRACKS		THROUGHOUT				MINOR	
SCALING		THROUGHOUT				MODERATE	
MAIN SPANS-2		DECK		REINFORCED CONCRETE		CAST-IN-PLACE	
Design_No = k0983							
Page 3							
This report contains information that is protected from disclosure by federal law, 23 USC Section 409 and the Missouri Open Records Law (Sunshine Act), Section 610.021 RSMo. Please review MoDOT's policy and procedure manual on the Sunshine Act before releasing any of the information contained herein.							







# Missouri Department of Transportation

## State Bridge Inspection Report

**November 26, 2024**  
**6:55:05AM**

**COUNTY: BUTLER**

**DISTRICT: SE**

**CLASS: STATBR**

**FED-ID: 6013**

**BRIDGE: K0983**

BENT-3	RA-20 DEGREES	32 FT 3 IN	REINFORCED CONCRETE	PILE CAP			
	<u>CONDITION</u>		<u>LOCATION 1</u>	<u>LOCATION 2</u>	<u>SEVERITY</u>	<u>MEASUREMENT</u>	<u>COMMENT</u>
	<u>ASSOCIATED COMPONENT</u>		<u>MATERIAL</u>	<u>CONSTRUCTION</u>			
	BEAM CAP		REINFORCED CONCRETE	CAST-IN-PLACE			
	<u>CONDITION</u>		<u>LOCATION 1</u>	<u>LOCATION 2</u>	<u>SEVERITY</u>	<u>MEASUREMENT</u>	<u>COMMENT</u>
	VERTICAL CRACKS		RANDOM		MINOR		
	PILING		REINFORCED CONCRETE	CAST-IN-PLACE			
	<u>CONDITION</u>		<u>LOCATION 1</u>	<u>LOCATION 2</u>	<u>SEVERITY</u>	<u>MEASUREMENT</u>	<u>COMMENT</u>
	SCALING		WATERLINE		MODERATE		
	EXPANSION BEARING		TARPAPER	SLIDING LAYERS			
	<u>CONDITION</u>		<u>LOCATION 1</u>	<u>LOCATION 2</u>	<u>SEVERITY</u>	<u>MEASUREMENT</u>	<u>COMMENT</u>
ABUTMENT-4	RA-20 DEGREES	38 FT 7 IN	REINFORCED CONCRETE	NON-INTEGRAL			
	<u>CONDITION</u>		<u>LOCATION 1</u>	<u>LOCATION 2</u>	<u>SEVERITY</u>	<u>MEASUREMENT</u>	<u>COMMENT</u>
	<u>ASSOCIATED COMPONENT</u>		<u>MATERIAL</u>	<u>CONSTRUCTION</u>			
	BEAM CAP		REINFORCED CONCRETE	CAST-IN-PLACE			
	<u>CONDITION</u>		<u>LOCATION 1</u>	<u>LOCATION 2</u>	<u>SEVERITY</u>	<u>MEASUREMENT</u>	<u>COMMENT</u>
	HORIZONTAL CRACKS		TOP		FEW		
	OTHER		AT BEAM CAP		NOT APPLICABLE		(RACKEM, 08/11/2011)--MINOR UNDERMING.
	VERTICAL CRACKS		THROUGHOUT		FEW		
	PILING		REINFORCED CONCRETE	CAST-IN-PLACE			
	<u>CONDITION</u>		<u>LOCATION 1</u>	<u>LOCATION 2</u>	<u>SEVERITY</u>	<u>MEASUREMENT</u>	<u>COMMENT</u>
	STRAIGHT WINGS		REINFORCED CONCRETE	CAST-IN-PLACE			
	<u>CONDITION</u>		<u>LOCATION 1</u>	<u>LOCATION 2</u>	<u>SEVERITY</u>	<u>MEASUREMENT</u>	<u>COMMENT</u>
	EXPANSION BEARING		TARPAPER	SLIDING LAYERS			
	<u>CONDITION</u>		<u>LOCATION 1</u>	<u>LOCATION 2</u>	<u>SEVERITY</u>	<u>MEASUREMENT</u>	<u>COMMENT</u>


\*\*\*OVER/UNDER ROUTES CLEARANCE INFORMATION\*\*\*


### CLEARANCES OVER DECK

**\*\*NOTE:** Vertical clearances for permitting purposes are taken as 2 inches less than the actual field measured clearance.

<u>VERTICAL CLEARANCE TYPE**</u>	<u>VALUE</u>	<u>DIRECTION</u>	<u>DATE</u>	<u>COMMENT</u>
----------------------------------	--------------	------------------	-------------	----------------



		<div>Missouri Department of Transportation</div> <div>State Bridge Inspection Report</div>				<div>November 26, 2024</div> <div>6:55:05AM</div>			
COUNTY: BUTLER		DISTRICT: SE		CLASS: STATBR		FED-ID: 6013		BRIDGE: K0983	
<b><u>CLEARANCES UNDER BRIDGE</u></b>		<small>**NOTE: Vertical clearances for permitting purposes are taken as 2 inches less than the actual field measured clearance.</small>							
<b><u>RECORD #</u></b>	<b><u>ROUTE</u></b>	<b><u># LANES</u></b>	<b><u>DIRECTION OF TRAFFIC</u></b>	<b><u>RIGHT LATERAL CLEARANCE</u></b>	<b><u>LEFT LATERAL CLEARANCE</u></b>	<b><u>UR-ID</u></b>			
<b><u>VERTICAL CLEARANCE TYPE**</u></b>	<b><u>VALUE</u></b>	<b><u>DIRECTION</u></b>	<b><u>DATE</u></b>	<b><u>COMMENT</u></b>					
***STRUCTURE PAINT INFORMATION***									
CONDITION:		RUST AMOUNT :		STEEL TONS : 0					
<b><u>ORIGINAL PAINT</u></b>		<b><u>CONTRACT REPAINT</u></b>				<b><u>DEPARTMENT REPAINT</u></b>			
PAINT TYPE :		PAINT TYPE :		PAINT TYPE :				MANUFACTURE :	
NAME :		NAME :		NAME :				SURFACE PREP :	
PAINT COLOR :		PAINT COLOR :		PAINT COLOR :					
PAINT YEAR :		PAINT YEAR :		PAINT YEAR :					
MILS :		MILS :		MILS :					
***REQUESTED WORK ITEMS***									
GENERAL WORK COMMENTS:									
<b><i>RESPONSIBILITY</i></b>	<b><i>LOCATION</i></b>	<b><i>ITEM</i></b>	<b><i>CATEGORY</i></b>	<b><i>PRIORITY</i></b>	<b><i>DATE</i></b>	<b><i>WORK ITEM COMMENT</i></b>			
DISTRICT ROUTINE	ROADWAY SURFACE	SEAL JTS - RODS/HOT POUR	DECK	3	02/08/2021				
***UTILITY ATTACHMENTS***									
<b><i>UTILITY</i></b>	<b><i>OWNER</i></b>	<b><i>METHOD</i></b>	<b><i>MEASUREMENT TYPE</i></b>	<b><i>VALUE</i></b>	<b><i>NUMBER</i></b>	<b><i>UTILITY ATTACHMENT COMMENT</i></b>			
***PROGRAM NOTES INFORMATION***									
<b><u>YEAR</u></b>	<b><u>PROJECT #</u></b>	<b><u>MONTH LET</u></b>	<b><u>YEAR LET</u></b>	<b><u>ITEMS</u></b>	<b><u>COMMENT</u></b>				
2027	SE0140	1	2027	REPLACE BRIDGE					
Design_No = k0983									
<div>Page 6</div> <div>This report contains information that is protected from disclosure by federal law, 23 USC Section 409 and the Missouri Open Records Law (Sunshine Act), Section 610.021 RSMo. Please review MoDOT's policy and procedure manual on the Sunshine Act before releasing any of the information contained herein.</div>									

			<b>Missouri Department of Transportation</b>		<b>November 26, 2024</b>	
			<b>State Bridge Inspection Report</b>		<b>6:55:05AM</b>	
<b>COUNTY: BUTLER</b>			<b>DISTRICT: SE</b>		<b>CLASS: STATBR</b>	
			<b>FED-ID: 6013</b>		<b>BRIDGE: K0983</b>	
<b>***COMPUTER GENERATED RATINGS AND DEFICIENCY ITEMS***</b>				<b>***ADVANCED SIGN INFORMATION***</b>		
NOTE: The items listed in this section are updated whenever computer edits are ran on a structure after the inspection updates have been entered in to TMS.				<b>SIGN #</b>		
				<b>SIGN TYPE</b>		
				<b>PROBLEM</b>		
				<b>PROBLEM DIRECTION</b>		
<b><u>Rated Item</u></b>				<b><u>Rating</u></b>		
				<b><u>Rating Date</u></b>		
[Item 67] Structure Evaluation Rating:				5-BETTER THAN MINIMUM		
[Item 68] Deck Geometry Rating:				2-BASICALLY INTOLRBLE REQ		
[Item 69] Underclearance:				N-NOT APPLICABLE		
Sufficiency Rating:				46.5%		
Deficiency:				FUNCTIONAL		
Funding Eligibility:				----		
Estimated New Structure Length:				----		
Estimated Structure Cost:				----		
Estimated Total Project Cost:				----		
Year of Cost Estimate:				----		
NOTE: The above structure length and cost estimates are computer generated using algorithms in the TMS system. These algorithms are generalized to use NBI items to come up with a new structure length and width to calculate a new area which is taken times a representative cost per square foot. The actual structure size and cost may vary significantly from these numbers once site specific engineering is done.						
				<b>***OUTFALL INSPECTION INFORMATION***</b>		
				<b># OUTFALLS:</b>		
				<b>INSPECTOR:</b>		
				<b>STATUS:</b>		
				<b>DATE:</b>		
				<b>NOTES:</b>		





Missouri Department of Transportation  
Bridge Inventory and Inspection System  
Structural Inventory & Appraisal Sheet

November 26, 2024  
6:58:14am

COUNTY : BUTLER      BRIDGE : K0983      REVIEW STATUS : APPROVED      NBI STATUS : T  
RECORD TYPE :      ROUTE CARRIED 'ON' STRUCT      RUN DATE : 3/15/2024      SUBMITTAL YEAR : 2024

GENERAL STRUCTURE INFORMATION			ROUTE DESIGNATION INFORMATION		
1	State	MISSOURI	5A	Record Type	ROUTE CARRIED 'ON' STRUCT
2	District	SE	5B	Route Signing Prefix	US
3	County	BUTLER	5C	Designated Level of Service	MAINLINE
8	Federal ID No.	6013	5D	Route Number	00067
27	Year Built	1941	5E	Directional Suffix	NOT APPLICABLE
106	Year Reconstructed	0	7	Facility Carried	US 67 S
42A	Type of Service On	HIGHWAY	12	Base Hwy. Network	YES
21	Structure Maintenance	STATE HIGHWAY AGENCY	13A	LRS Inventory Route No.	0000000015
22	Structure Owner	STATE HIGHWAY AGENCY	13B	Subroute No.	00
33	Br. Median Code	NO MEDIAN	20	Toll Status	ON FREE ROAD
37	Historical Significance	NOT ELIGIBLE FOR NR OF HP	26	Functional Classification	02-RU PRINCPL ARTRIAL-OTH
101	Parallel Struc Desg	NONE EXISTS	28A	Lanes on Structure	02
103	Temporary Structure	NOT TEMPORARY	100	STRAHNET Designation	RTE NOT A DEFENSE HWY
112	NBIS Bridge Length	YES	104	National Highway System	ON NHS
			105	Federal Lands Highway	NOT APPLICABLE
			110	Designated Nat. Network	YES
STRUCTURE LOCATION INFORMATION			STRUCTURE TRAFFIC INFORMATION		
4	Place	NEELY	29	AADT	7121
	Code	51392	30	AADT Year	2023
9	Location	S 9 T 22 N R 5 E	102	Direction of Traffic	2-WAY TRAFFIC
11	Milepoint	193.36 miles	109	AADT Truck Percent	27%
16	Latitude	36 D 33 M 45 S	114	Future AADT	12462
17	Longitude	90 D 31 M 16 S	115	Future AADT Year	2043
UNDERRECORD INFORMATION			STRUCTURE GEOMETRIC INFORMATION		
6	Features Intersected	NEELYVILLE DRAIN D	10	Inventory Rte. Vert. Clear	99 Ft. 99 In.
42B	Type of Service Under	WATERWAY	19	By pass Detour Length	26.25 miles
28B	Lanes Under Structure	00	32	Approach Roadway Width	23 Ft. 11 In.
54A	Vert. Clearance Ref.	N/A	34	Skew	20.00 Degrees
54B	Vert. Clearance	0 Ft. 0 In.	35	Struct. Flared	NO
55A	Rt. Lat Clear Ref.	N/A	47	Total Horiz. Clear	25 Ft. 11 In.
55B	Rt. Lat Clearance	0 Ft. 0 In.	48	Maximum Span Length	20 Ft. 4 In.
56	Left Lat Clearance	0 Ft. 0 In.	49	Structure Length	61 Ft. 0 In.
38	Navigation Control	PERMIT NOT REQ	50A	Left Curb/Sidewalk Width	0 Ft. 0 In.
39	Nav Vertical Clear	0 Ft. 0 In.	50B	Right Curb/Sidewalk Width	0 Ft. 0 In.
40	Nav Horizontal Clear	0 Ft. 0 In.	51	Curb to Curb Br. Width	25 Ft. 11 In.
111	Nav. Pier Protection		52	Deck Width (Out-Out)	29 Ft. 10 In.
116	Nav. Cl. Vert. Clear		53	Vert. Clearance Over Deck	99 Ft. 99 In.

Design\_No = K0983 and Inventory\_Appraisal\_Submittal\_Year = 2024



Missouri Department of Transportation  
Bridge Inventory and Inspection System  
Structural Inventory & Appraisal Sheet

November 26, 2024  
6:58:14am

COUNTY : BUTLER      BRIDGE : K0983      REVIEW STATUS : APPROVED      NBI STATUS : T  
RECORD TYPE :      ROUTE CARRIED 'ON' STRUCT      RUN DATE : 3/15/2024      SUBMITTAL YEAR : 2024

LOAD RATING AND POSTING INFORMATION			MATERIAL/CONSTRUCTION INFORMATION		
31	Design Load	H 15	43A	Main Struc. Mat type	CONCRETE
41	Structure Status	OPEN NO RESTRICTIONS	43B	Main struc Constr. Type	SLAB
63	Oper. Rating Meth.	LOAD FACTOR	45	# of Main Spans	3
64	Operating Rating	45 Tons.	44A	Appr Struc. Mat type	000
65	Inventory Rating Meth	LOAD FACTOR	44B	Appr Struc. Cnstr. type	000
66	Inventory Rating	27 Tons.	46	# of Approach Span	0
70	Bridge Posting Code	=>LEGAL LOADS	107	Deck Mat/Constr.	1 CONCRETE CIP
			108A	Wear Surf Mat/Constr.	6 BITUMINOUS
			108B	Membrane Mat/Constr.	0 NONE
			108C	Deck Protect Mat/Constr.	0 NONE
PROPOSED IMPROVEMENT INFORMATION			CONDITION RATING INFORMATION		
	Sufficiency Rating	46.5 Percent	58	Deck Cond. Rating	5
	Deficiency Rating	FUNCTIONAL	59	Superstructure Cond. Rating	5
	Funding Eligibility	FULL	60	Substructure Cond. Rating	5
75A	Proposed Work	REPLACEMENT SUBSTND LOAD	61	Channel /Channel Protection Cond. Rating	6
75B	Work Done By	Contract	62	Culvert Cond. Rating	N
76	New Struc Length	85 Ft. 4 In.			
94	Struc Improve Cost	\$ 595,000	INSPECTION INFORMATION		
95	Roadway Improve Cost	\$ 59,000	90	Gen. Insp Date	2 / 23
96	Total Project Cost	\$ 892,000	91	Gen. Insp. Frequency	24 Months
97	Year of Cost Estimates	2024	92A	Frac. Critical Inspection	N Months
			93A	Frac. Critical Insp. Date	
			92B	Underwater Inspection	N Months
			93B	Underwater Insp. Date	
			92C	Special Inspection	N Months
			93C	Special Inspection Date	
APPRAISAL RATING INFORMATION			BORDER BRIDGE INFORMATION		
36A	Br. Rail App. Rating	DOES NOT MEET ACCEPT STND	98	Neighboring State Code	
36B	Transition Rail App. Rating	DOES NOT MEET ACCEPT STND	98B	Neighboring State % Respon	
36C	Approach Rail App. Rating	MEETS ACCEPTBLE STND	99	Neighboring State Struc. No.	
36D	Rail End Treat. App. Rating	MEETS ACCEPTBLE STND			
67	Struc Eval App. Rating	5	APPROVED POSTING INFORMATION		
68	Deck Geometry App. Rating	2	FIELD POSTING INFORMATION		
69	Underclearance App. Rating	N	Approved Posting Category	S-1	
71	Waterway Adeq. App. Rating	8		Ton1	Ton2      Ton3
72	Approach Road App. Rating	8	Tonnage Values for Posting Sign		
113	Scour Assess App. Rating	8	General Text for Posting Sign		
			NO POSTING REQUIRED	NO POSTING REQUIRED	

Design\_No = K0983 and Inventory\_Appraisal\_Submittal\_Year = 2024