

MISSOURI STATE HIGHWAY DEPARTMENT

FED. ROAD DIST. NO.	STATE AID PROJ. NO.	FISCAL YEAR	SHEET NO.	TOTAL SHEETS
5	5-60(1) (SA) (83)	19		

COMPLETE BILL OF REINFORCING STEEL				Cutting Diagrams & Bending Sketches		
No.	Size	Length	Mark			
43	3/8"	26'-0"	A1	5'-19 1/2"	2'-18" 6'-0"	3'-4" 7'-0 1/2"
55	3/8"	28'-0"	A2			
112	3/8"	11'-3"	B1			
36	3/8"	10'-9"	B2			
4	3/8"	24'-3"	C1	19'-26'-4 1/2"	6'-0" 23'-0"	7'-0 1/2" 22'-11 1/2"
15	3/8"	38'-9"	D1	28'-0"	29'-0"	30'-0"
36	3/8"	8'-3"	D2	55-A2 CUT 5	9-F2 CUT 36	6-F4 CUT 6
15	3/8"	5'-9"	E1			
62	3/8"	24'-3"	F1	8'-3'-3"	5'-22"	15'-2'-8 1/2"
36	3/8"	29'-0"	F2			
16	3/8"	24'-6"	F3			
6	3/8"	30'-0"	F4			
2	3/8"	24'-6"	F5	3'-3" 11'-9"	28'-10'-4"	2'-8 1/2" 6'-6 1/2"
52	3/8"	15'-0"	G1	15'-0"	12'-3"	9'-3"
19	3/8"	12'-3"	G2	13-G1 CUT 52	19-G2 CUT 19	4-K1 CUT 16
6	3/8"	37'-9"	H1	19'-5'-0 1/2"		
80	3/8"	10'-0"	H2			
20	3/8"	27'-9"	J1			
6	3/8"	12'-3"	B3			
16	3/8"	9'-3"	K1	5'-0 1/2" 12'-11 1/2"		
12	3/8"	18'-0"	K2			
12	3/8"	10'-9"	L1	6-K2 CUT 12		
20	3/8"	9'-9"	M1	BEND AS SHOWN		
40	3/8"	3'-9"	M2			
8	3/8"	5'-6"	M3			
70	3/8"	2'-9"	R1	3-E1 CUT 15		

15'-3"

8'-3"

R1

14"

3"

K2

8'-2"

3"

L1

5'-10"

3"

Hor. Leg

MI

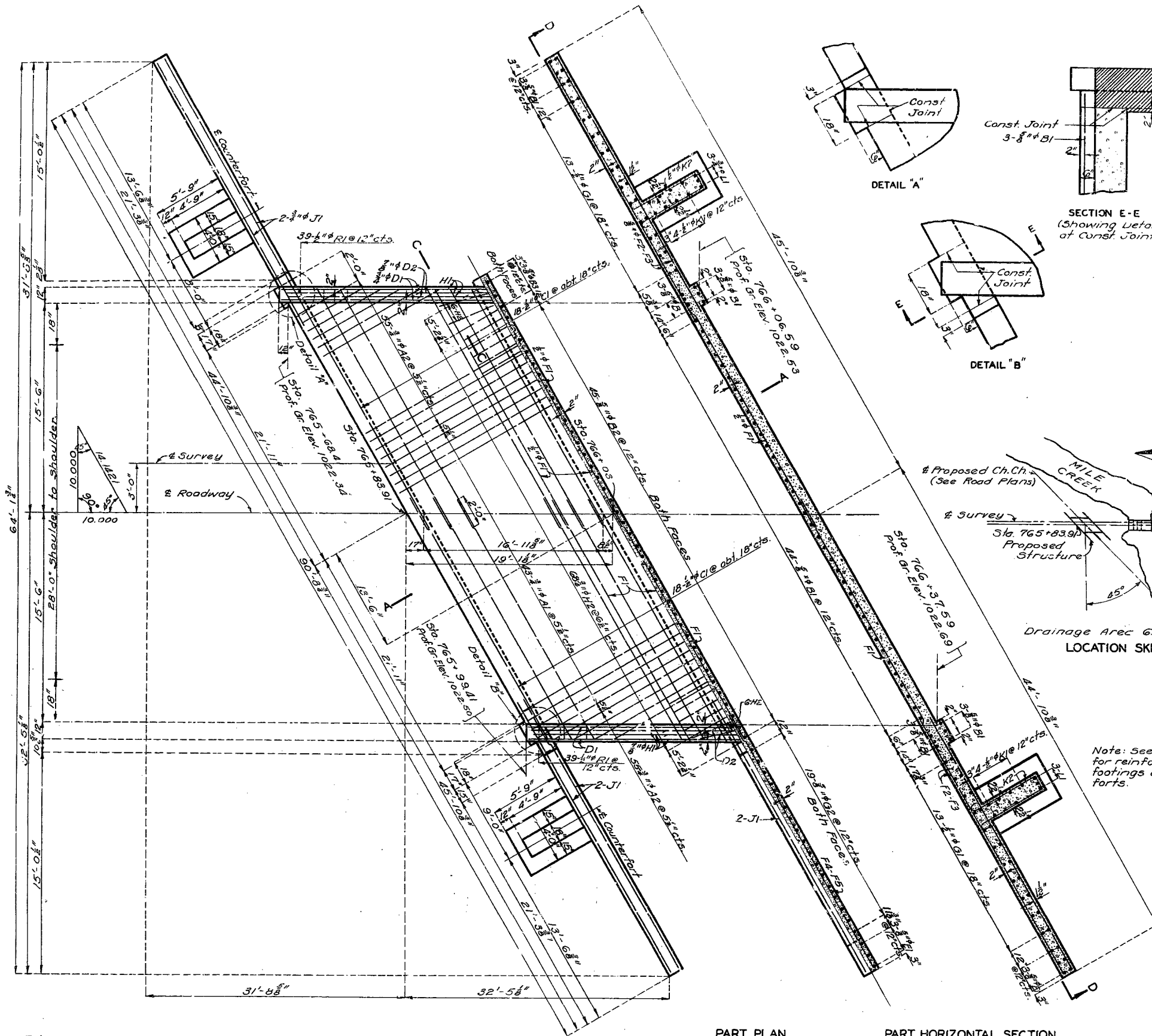
ESTIMATED QUANTITIES		
Class 3 Excavation for Structures	Cu. Yds.	670
Class "B" Concrete	Cu. Yds.	132.4
Reinforcing Steel	Lbs.	14340

GENERAL NOTES:
 Design Specifications A.A.S.H.O. 1944
 Loading H-15 A.A.S.H.O. 1944
 Reinforcing Steel Stress 18000 #/sq in
 Concrete Class "B" Stress 1000 #/sq in
 All concrete shall be Class "B".
 In addition to excavation within standard limits, the removal of all other material between walls of the structure below existing ground line and above finished flow line is included in estimated quantity of Class 3 Excavation for Structures and will be paid for as such.
 Anchor full length of outside walls and 2'-6" at ends of inside wall by excavating 6" into and casting concrete against vertical faces of hard, solid, undisturbed rock. Remainder of inside wall may be placed upon rock after all loose, shelly or disintegrated rock has been removed.
 Bar supports and spacers required in top slab.

B.M. Elev. 1020.55 N&W in 24" Elm 80' Rt Sta. 766+30
 U.S.C. & G.S. datum is 32.035' below Route A(83) datum.

BRIDGE OVER MILE CREEK
 STATE ROAD FROM BOLIVAR NORTH
 ABOUT 1 MILE N. OF BOLIVAR
 PROJECT NO. S-80(1) (SA) (83) STA. 765+83.91 ON & RDWY.
 POLK COUNTY

DESIGNED BY: *V.W. Enns* DATE: 8/25/1948
 CHECKED BY: *C.W. Brown* DATE: 8/25/1948
 APPROVED BY: *C.W. Brown* DATE: 8/25/1948
 STD. C-11083
 L-341



PART PLAN PART HORIZONTAL SECTION

Drawn Feb. 1940 by T.H.M.
 Traced Feb. 1940 by G.W.
 Checked 19 by
 Assembled July 1948 by R.V.G. & E.J.O.
 Checked Aug. 1948 by C.S.A.

Note: This drawing is not to scale. Follow dimensions.

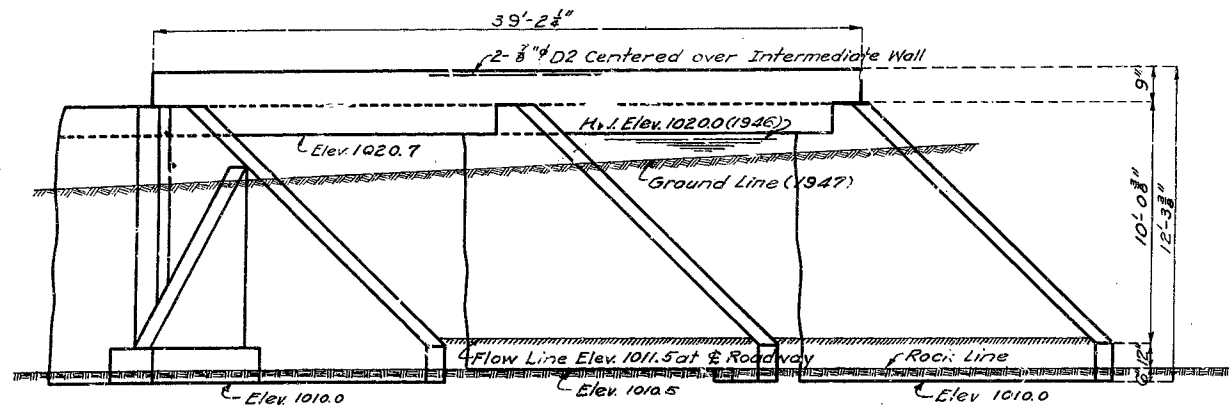
Sheet No. 1 of 2

SEE FINAL PLANS BROWN LINES
 Double-Width Cuts - Skew R.A.

309

MISSOURI STATE HIGHWAY DEPARTMENT

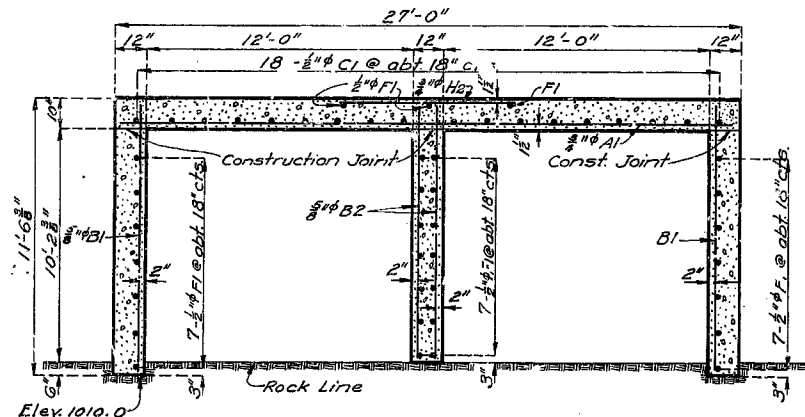
FED. ROAD DIST. NO.	STATE	FED. AID PROJ. NO.	FISCAL YEAR	SHEET NO.	TOTAL SHEETS
5	MO.	3-80(17) 1-91(83)	19		



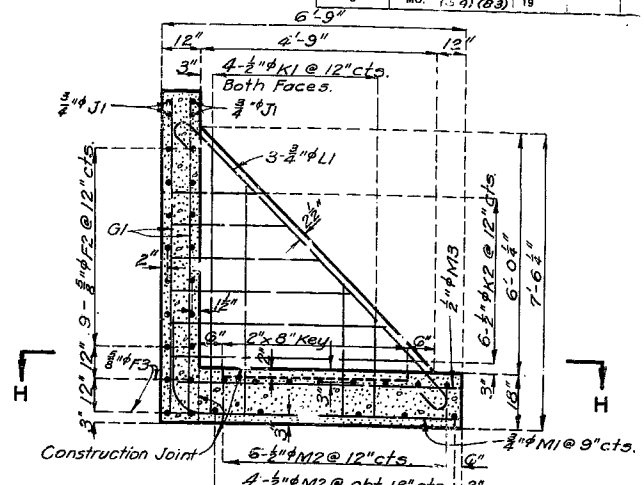
Note: Bottom of slab shall be placed level at Elev. 1020.7 and height of walls to be varied as necessary to extend walls to or into rock as specified.

END ELEVATION
(From Sheet No. 1)

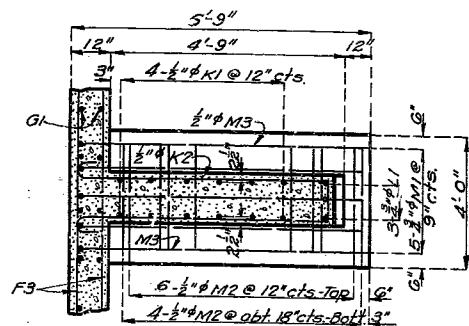
Note: Channel to be opened above and below structure as shown on Road Plans.



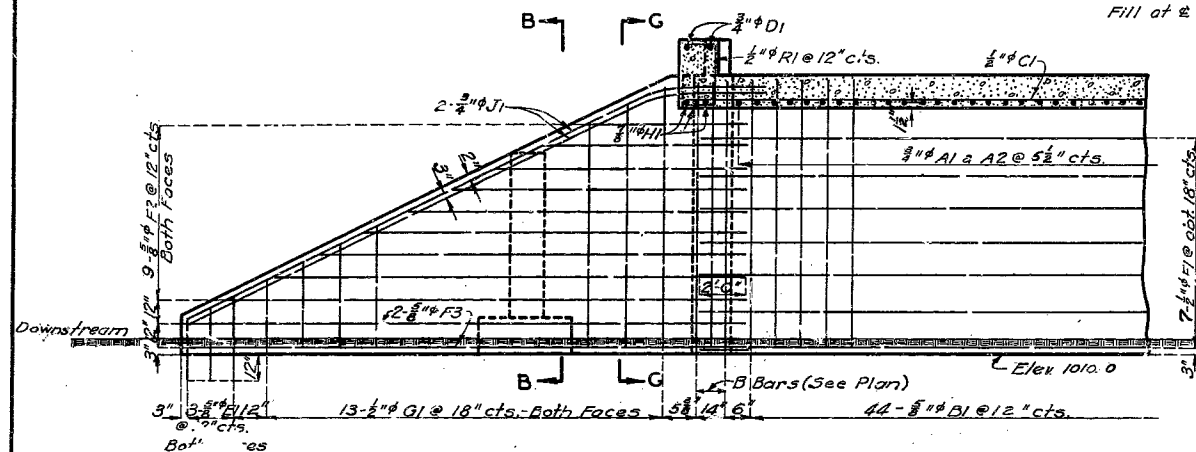
SECTION A-A
(From Sheet No. 1)



SECTION B-B

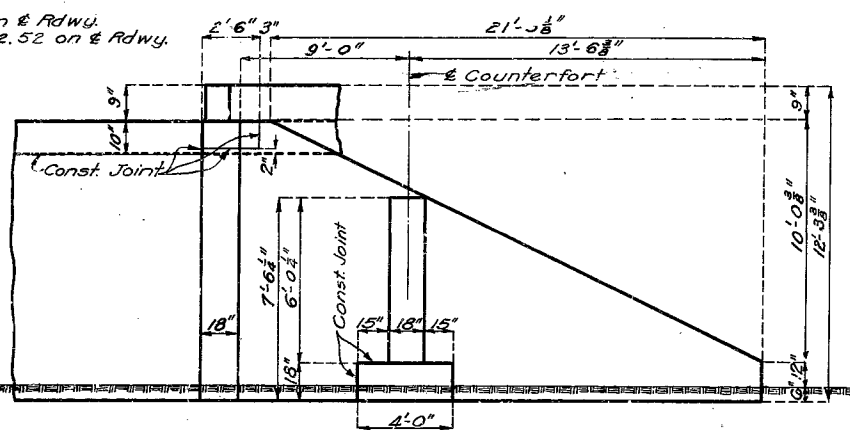


SECTION H-H

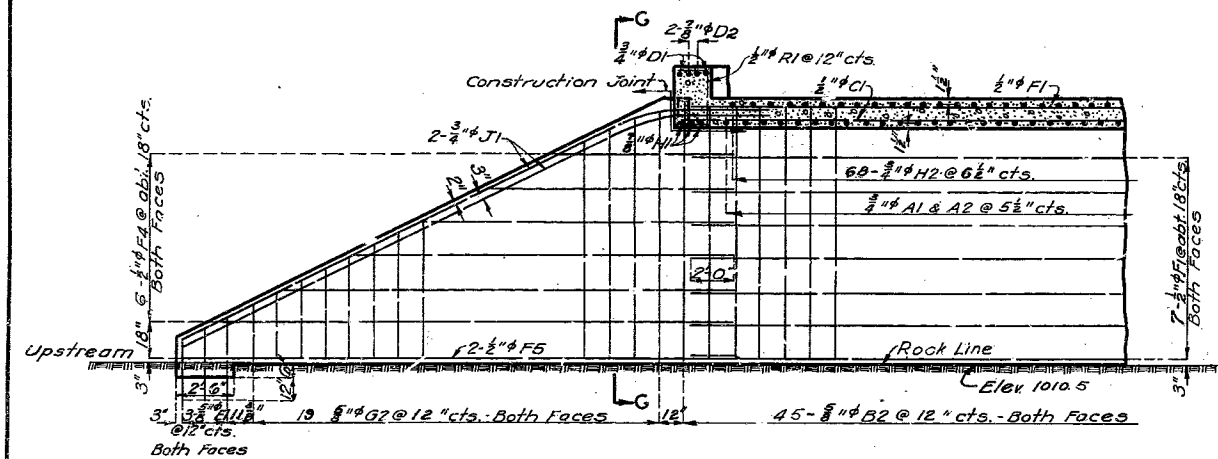


PART LONGITUDINAL SECTION D-D
(From Sheet No. 1)

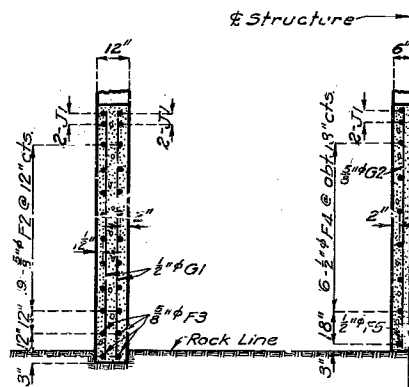
Note: Holes to be drilled 12" into solid rock and EI Bars grouted in.



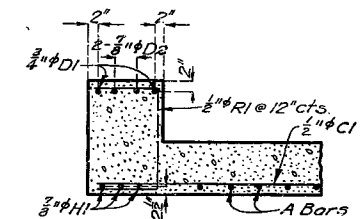
SIDE ELEVATION - WINGWALL



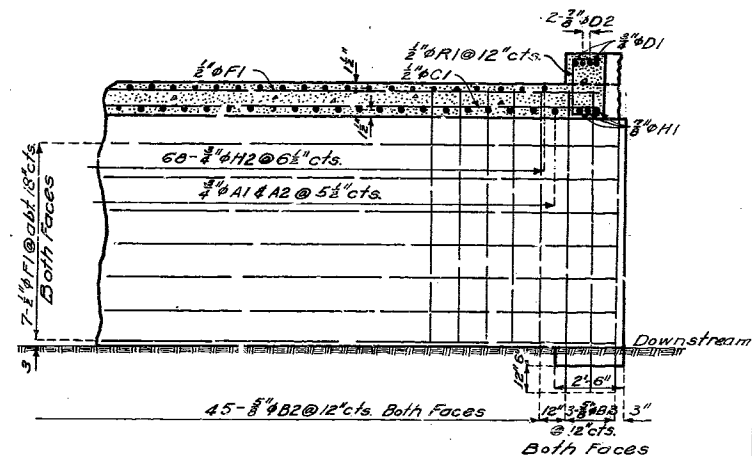
PART LONGITUDINAL SECTION NEAR INTERMEDIATE WALL



HALF SECTION G-G



SECTION C-C
(From Sheet No. 1)



PART LONGITUDINAL SECTION NEAR INTERMEDIATE WALL

BRIDGE OVER MILE CREEK

STATE ROAD FROM BOLIVAR NORTH
ABOUT 1 MILE N. OF BOLIVAR
PROJECT NO. S-60K1 (SA) (83) STA. 765+83.91 ON E. RDWY.
POLK COUNTY

Drawn Jan. 1940 by T.H.M.
Traced Feb. 1940 by G.W.
Checked by

Assembled July 1948 by R.V.G. & E.J.O.
Checked Aug. 1948 by C.S.A.

Note: This drawing is not to scale. Follow dimensions.

Sheet No. 2 of 2

SEE FINAL PLANS BROWN LINES
Double N.F. Cfts. Skew R.A.

L-341

MISSOURI STATE HIGHWAY DEPARTMENT

11th ROAD DIST. NO.	STATE	FED. AID FISCAL YEAR	SHEET NO.	TOTAL SHEETS
5	MO	5-601(1) 1941	12	14

FINAL PLANS

COMPLETE BILL OF REINFORCING STEEL

No.	Size	Length	Mark	Cutting Diagrams & Bending Sketches		
43	3/4"	26'-9"	A1			
55	3/4"	28'-0"	A2			
112	3/4"	11'-3"	B1			
90	3/4"	10'-0"	B2			
36	3/4"	24'-3"	C1			
4	3/4"	38'-9"	D1			
4	3/4"	8'-3"	D2			
1	3/4"	5'-9"	E1			
62	3/4"	24'-3"	F1			
36	3/4"	29'-0"	F2			
16	3/4"	24'-6"	F3			
6	3/4"	30'-0"	F4			
2	3/4"	24'-6"	F5			
52	3/4"	15'-0"	G1			
19	3/4"	12'-3"	G2			
8	3/4"	37'-9"	H1			
80	3/4"	10'-0"	H2			
20	3/4"	27'-9"	J1			
6	3/4"	12'-3"	B3			
16	3/4"	9'-3"	K1			
12	3/4"	18'-0"	K2			
20	3/4"	9'-9"	L1			
40	3/4"	3'-9"	M1			
8	3/4"	5'-6"	M2			
78	3/4"	2'-9"	R1			

6 - K2 CUT 12
BEND AS SHOWN

K2

LI

3-EI CUT 15

LI

MI

RI

FINAL QUANTITIES

Class	Description	Unit	Quantity
Class 3	Excavation for Structures	Cu. Yds.	6455
Class B	Concrete	Cu. Yds.	1292
	Reinforcing Steel	Lbs.	14340

GENERAL NOTES:

Design Specifications A.A.S.H.O. 1944
 Loading H-15 A.A.S.H.O. 1944
 Reinforcing Steel Stress 18000 #/sq in
 Concrete Class "B" Stress 1000 #/sq in
 All concrete shall be Class "B"
 In addition to excavation within standard limits, the removal of all other material between walls of the structure below existing ground line and above finished flow line is included in estimated quantity of Class 3 Excavation for Structures and will be paid for as such.
 Anchor full length of outside walls and 2'-6" at ends of inside wall by excavating 6" into and casting concrete against vertical faces of hard, solid, undisturbed rock. Remainder of inside wall may be placed upon rock after all loose, shelly or disintegrated rock has been removed.
 Bar supports and spacers required in top slab.

B.M. Elev 1020.55 N&W in 24" Elm 80' Rt Sta 766+30
 U.S.C. & G.S. datum is 32.035' below Route A(83) datum.

BRIDGE OVER MILE CREEK

STATE ROAD FROM BOLIVAR NORTH
 ABOUT 1 MILE N. OF BOLIVAR
 PROJECT NO. S-601(1) (SA) (83) STA. 765+83.91 ON E. RDWY.
 POLK COUNTY

SUBMITTED BY *V. W. Enlow* DATE 8/25/1948
 APPROVED BY *C. Brown* DATE 8/25/1948
 BRIDGE ENGINEER CHIEF ENGINEER

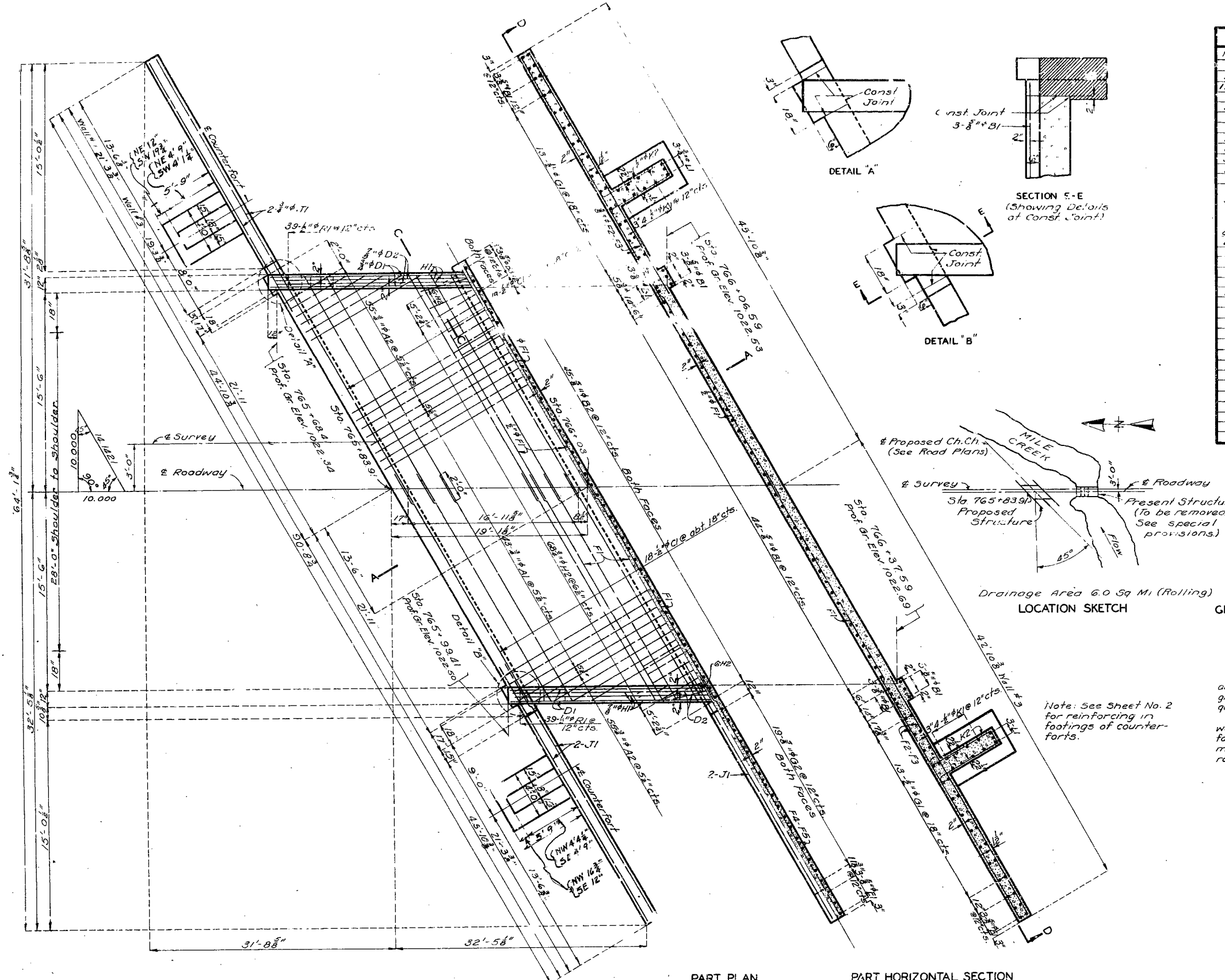
STD. C-110R3

L-341

FINAL PLANS

Sheet No. 1 of 2

Double N.E. Cfts. Skew RA



PART PLAN

PART HORIZONTAL SECTION

Note: This drawing is not to scale. Follow dimensions.

Drawn Feb. 1940 by T.H.M.
 Traced Feb. 1940 by G.W.
 Checked 19 by

Assembled July 1948 by R.V.G. & E.J.O.
 Checked Aug. 1948 by C.S.A.

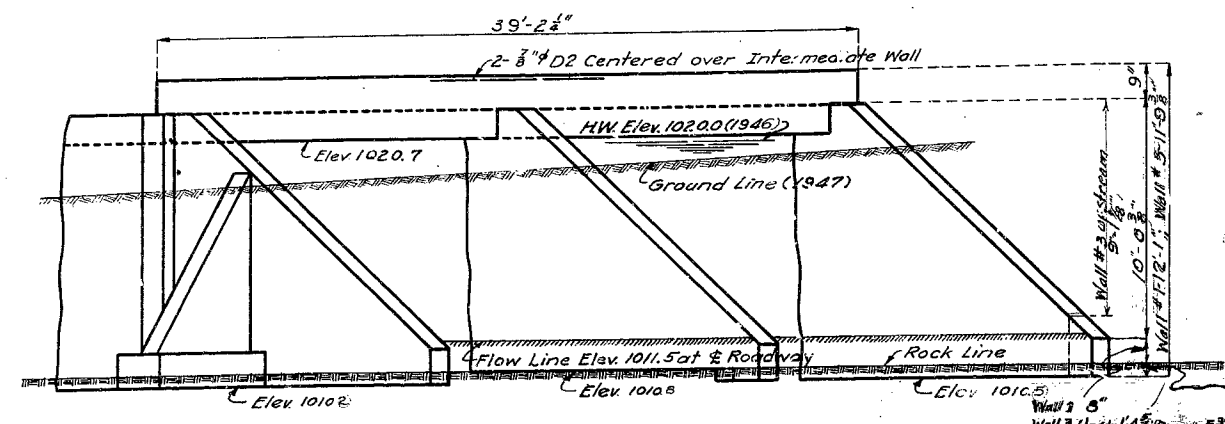
311

MISSOURI STATE HIGHWAY DEPARTMENT

NE 4'-4 1/2"
NW 4'-4 1/2"
SE 4'-9"
SW 4'-1 1/2"

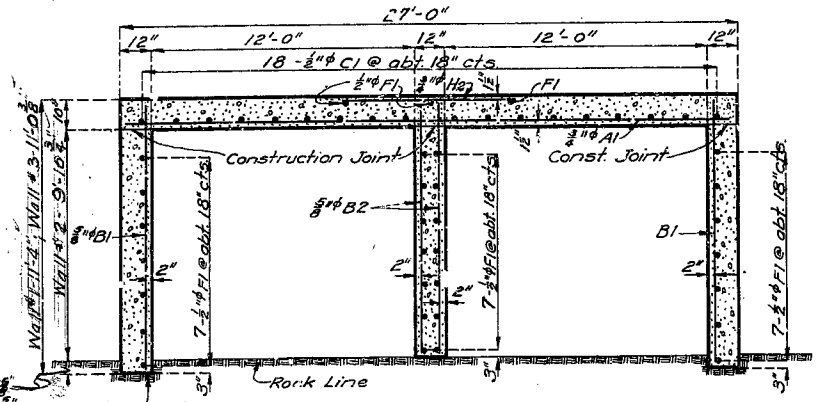
FINAL PLANS

FED. ROAD DIST. NO.	STATE	FED. AID PROJ. NO.	FISCAL YEAR	SHEET NO.	TOTAL SHEETS
5	MO.	5-60770 (SA) (83)	1937	13	14

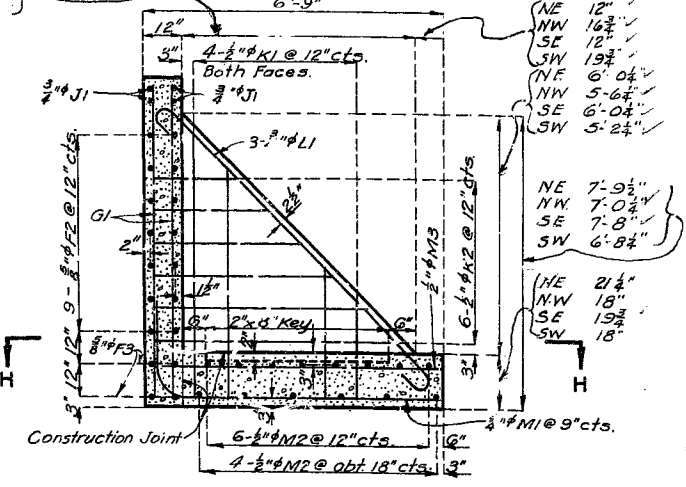


Note: Bottom of slab shall be placed level at Elev. 1020.7 and height of walls to be varied as necessary to extend walls to or into rock as specified.

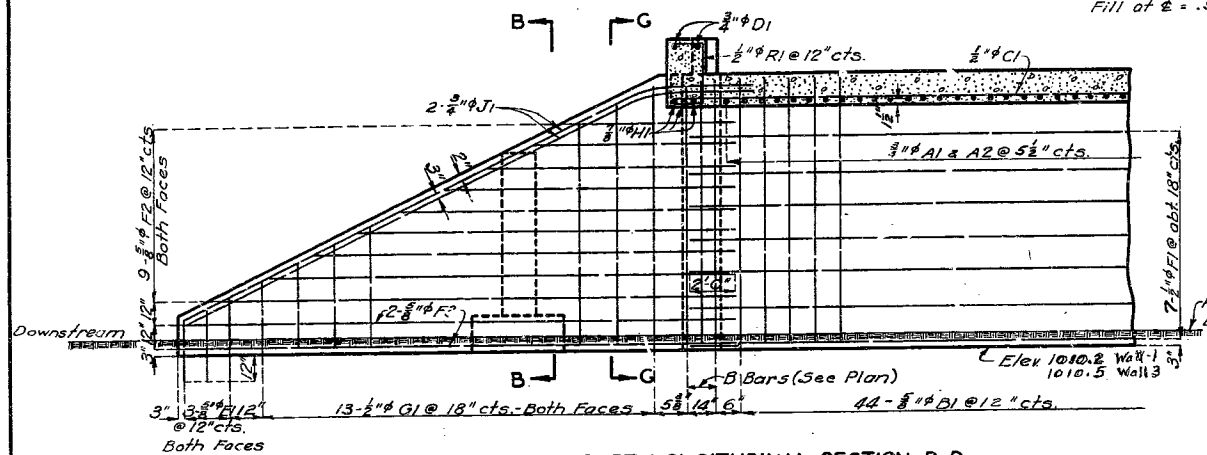
END ELEVATION
(From Sheet No. 1)
Note: Channel to be opened above and below structure as shown on Road Plans.



SECTION A-A
(From Sheet No. 1)

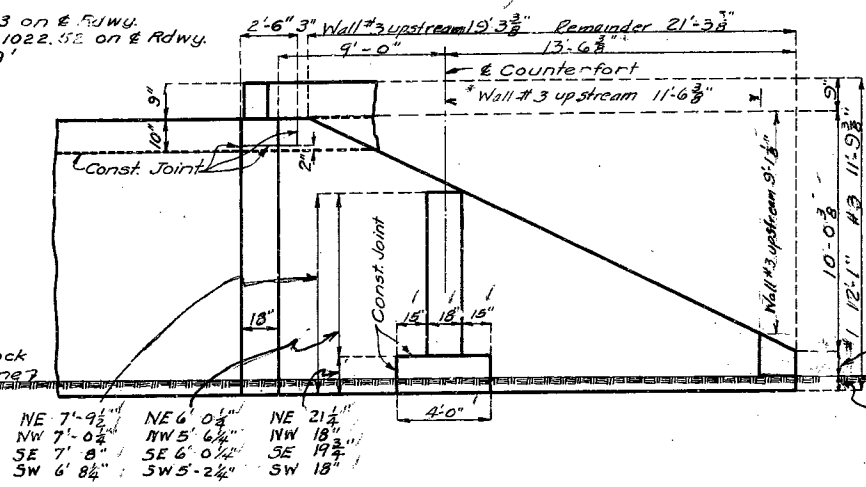


SECTION B-B

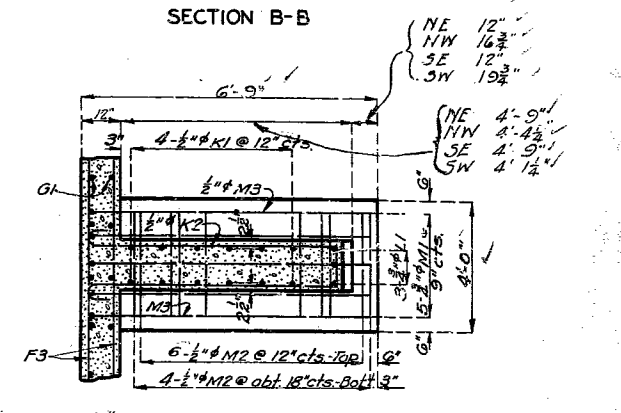


PART LONGITUDINAL SECTION D-D
(From Sheet No. 1)

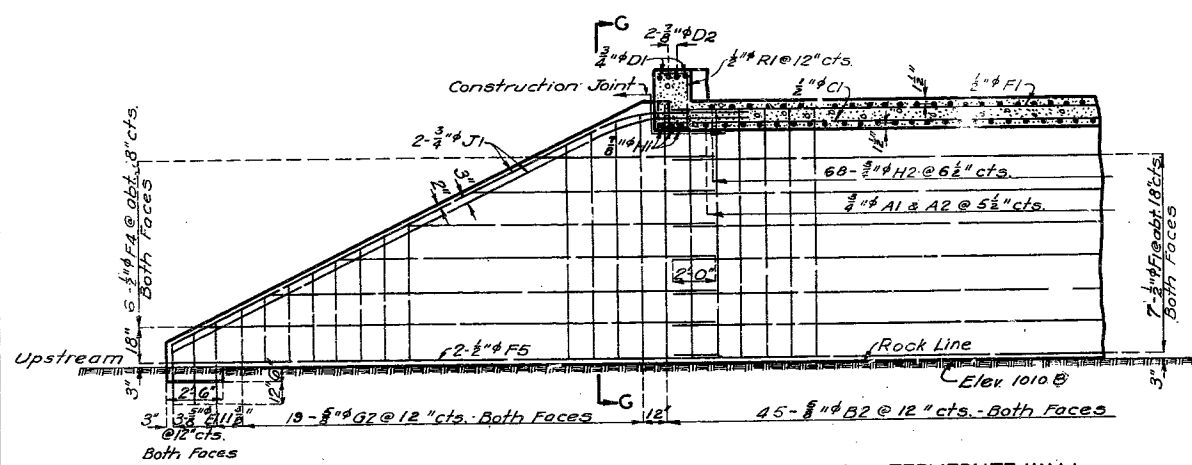
Note: Holes to be drilled 12" into solid rock and EI Bars grouted in.



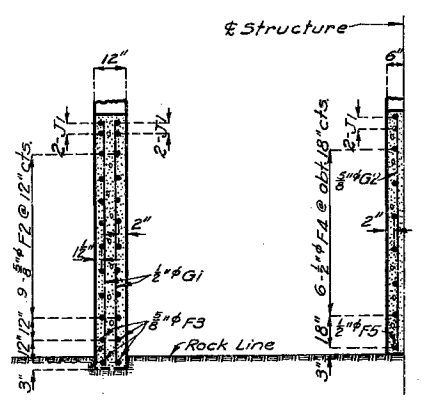
SIDE ELEVATION - WINGWALL



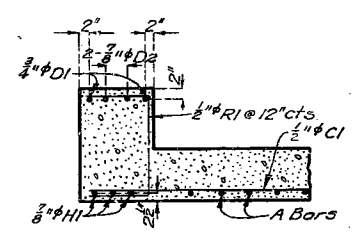
SECTION H-H



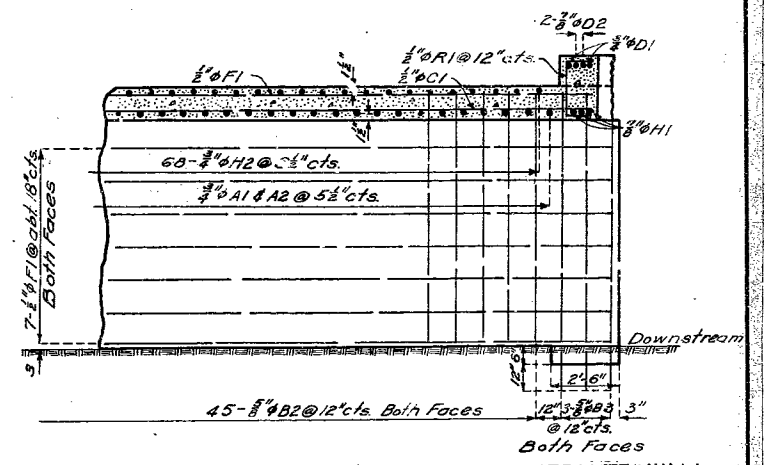
PART LONGITUDINAL SECTION NEAR INTERMEDIATE WALL



HALF SECTION G-G



SECTION C-C
(From Sheet No. 1)



PART LONGITUDINAL SECTION NEAR INTERMEDIATE WALL

BRIDGE OVER MILE CREEK

STATE ROAD FROM BOLIVAR NORTH
ABOUT 1 MILE N. OF BOLIVAR
PROJECT NO. S-60KI (SA) (83) STA. 765+83.91 ON E RDWY.
POLK COUNTY FINISHED

Drawn Jan. 1940 by T.H.M.
Traced Feb. 1940 by G.W.
Checked by

Assembled July 1948 by R.V.G. & E.J.O.
Checked Aug. 1948 by C.S.A.

Note: This drawing is not to scale. Follow dimensions.

Sheet No. 2A of 2.

FINAL PLANS

Double-N.E. Cfts. Skew R.A.

L-341



Missouri Department of Transportation
Bridge Inventory and Inspection System
Structural Inventory & Appraisal Sheet

December 2, 2024
1:56:41pm

COUNTY : POLK BRIDGE : L0341 REVIEW STATUS : APPROVED NBI STATUS : P
RECORD TYPE : ROUTE CARRIED 'ON' STRUCT RUN DATE : 2/22/2005 SUBMITTAL YEAR : 2004

GENERAL STRUCTURE INFORMATION			ROUTE DESIGNATION INFORMATION		
1	State	MISSOURI	5A	Record Type	ROUTE CARRIED 'ON' STRUCT
2	District	SW	5B	Route Signing Prefix	MO
3	County	POLK	5C	Designated Level of Service	MAINLINE
8	Federal ID No.	6215	5D	Route Number	00083
27	Year Built	1948	5E	Directional Suffix	NOT APPLICABLE
106	Year Reconstructed	0	7	Facility Carried	MO 83 S
42A	Type of Service On	HIGHWAY	12	Base Hwy. Network	NO
21	Structure Maintenance	STATE HIGHWAY AGENCY	13A	LRS Inventory Route No.	
22	Structure Owner	STATE HIGHWAY AGENCY	13B	Subroute No.	
33	Br. Median Code	NO MEDIAN	20	Toll Status	ON FREE ROAD
37	Historical Significance	NOT ELIGIBLE FOR NR OF HP	26	Functional Classification	07-RURAL MAJOR COLLECTOR
101	Parallel Struc Desg	NONE EXISTS	28A	Lanes on Structure	02
103	Temporary Structure	NOT TEMPORARY	100	STRAHNET Designation	RTE NOT A DEFENSE HWY
112	NBIS Bridge Length	YES	104	National Highway System	NOT ON NHS
			105	Federal Lands Highway	NOT APPLICABLE
			110	Designated Nat. Network	NO
STRUCTURE LOCATION INFORMATION			STRUCTURE TRAFFIC INFORMATION		
4	Place	POLK 90825	29	AADT	4373
	Code	90825	30	AADT Year	2003
9	Location	S 35 T 34N R 23W	102	Direction of Traffic	2-WAY TRAFFIC
11	Milepoint	52.76 miles	109	AADT Truck Percent	10%
16	Latitude	37 D 37 M 54 S	114	Future AADT	6996
17	Longitude	93 D 25 M 12 S	115	Future AADT Year	2025
UNDERRECORD INFORMATION			STRUCTURE GEOMETRIC INFORMATION		
6	Features Intersected	MILE CR	10	Inventory Rte. Vert. Clear	99 Ft. 99 In.
42B	Type of Service Under	WATERWAY	19	By pass Detour Length	14.26 miles
28B	Lanes Under Structure	00	32	Approach Roadway Width	25 Ft. 11 In.
54A	Vert. Clearance Ref.	N/A	34	Skew	45.00 Degrees
54B	Vert. Clearance	0 Ft. 0 In.	35	Struct. Flared	NO
55A	Rt. Lat Clear Ref.	N/A	47	Total Horiz. Clear	27 Ft. 11 In.
55B	Rt. Lat Clearance	0 Ft. 0 In.	48	Maximum Span Length	12 Ft. 2 In.
56	Left Lat Clearance	0 Ft. 0 In.	49	Structure Length	35 Ft. 5 In.
38	Navigation Control	PERMIT NOT REQ	50A	Left Curb/Sidewalk Width	0 Ft. 0 In.
39	Nav Vertical Clear	0 Ft. 0 In.	50B	Right Curb/Sidewalk Width	0 Ft. 0 In.
40	Nav Horizontal Clear	0 Ft. 0 In.	51	Curb to Curb Br. Width	30 Ft. 10 In.
111	Nav. Pier Protection		52	Deck Width (Out-Out)	35 Ft. 1 In.
116	Nav. Cl. Vert. Clear		53	Vert. Clearance Over Deck	99 Ft. 99 In.

Design_No = L0341



Missouri Department of Transportation
Bridge Inventory and Inspection System
Structural Inventory & Appraisal Sheet

December 2, 2024
1:56:41pm

COUNTY : POLK BRIDGE : L0341 REVIEW STATUS : APPROVED NBI STATUS : P
RECORD TYPE : ROUTE CARRIED 'ON' STRUCT RUN DATE : 2/22/2005 SUBMITTAL YEAR : 2004

LOAD RATING AND POSTING INFORMATION			MATERIAL/CONSTRUCTION INFORMATION		
31	Design Load	H 15	43A	Main Struc. Mat type	CONCRETE CONTINUOUS
41	Structure Status	A - OPEN NO RESTRICTIONS	43B	Main struc Constr. Type	CULVERT
63	Oper. Rating Meth.	NO RATING ANALYSIS PERFMD	45	# of Main Spans	2
64	Operating Rating	55 Tons.	44A	Appr Struc. Mat type	
65	Inventory Rating Meth	NO RATING ANALYSIS PERFMD	44B	Appr Struc. Cnstr. type	
66	Inventory Rating	19 Tons.	46	# of Approach Span	0
70	Bridge Posting Code	=>LEGAL LOADS	107	Deck Mat/Constr.	NA
PROPOSED IMPROVEMENT INFORMATION			108A	Wear Surf Mat/Constr.	NA
Sufficiency Rating 46.9 Percent			108B	Membrane Mat/Constr.	NA
Deficiency Rating NOT DEFICIENT			108C	Deck Protect Mat/Constr.	NA
Funding Eligibility			CONDITION RATING INFORMATION		
75A	Proposed Work		58	Deck Cond. Rating	N
75B	Work Done By		59	Superstructure Cond. Rating	N
76	New Struc Length	0 Ft. 0 In.	60	Substructure Cond. Rating	N
94	Struc Improve Cost	\$ 0,000	61	Channel /Channel Protection Cond. Rating	5
95	Roadway Improve Cost	\$ 0,000	62	Culvert Cond. Rating	5
96	Total Project Cost	\$ 0,000	INSPECTION INFORMATION		
97	Year of Cost Estimates	0	90	Gen. Insp Date	12 / 03
APPRAISAL RATING INFORMATION			91	Gen. Insp. Frequency	24 Months
36A	Br. Rail App. Rating	MEETS ACCEPTBLE STND	92A	Frac. Critical Inspection	N Months
36B	Transition Rail App. Rating	MEETS ACCEPTBLE STND	93A	Frac. Critical Insp. Date	
36C	Approach Rail App. Rating	MEETS ACCEPTBLE STND	92B	Underwater Inspection	N Months
36D	Rail End Treat. App. Rating	MEETS ACCEPTBLE STND	93B	Underwater Insp. Date	
67	Struc Eval App. Rating	4	92C	Special Inspection	N Months
68	Deck Geometry App. Rating	4	93C	Special Inspection Date	
69	Underclearance App. Rating	N	BORDER BRIDGE INFORMATION		
71	Waterway Adeq. App. Rating	6	98	Neighboring State Code	
72	Approach Road App. Rating	8	98B	Neighboring State % Respon	
113	Scour Assess App. Rating	8	99	Neighboring State Struc. No.	
APPROVED POSTING INFORMATION			FIELD POSTING INFORMATION		
Approved Posting Category S-1			Field Posting Category S-1		
Ton1 Ton2 Ton3			Ton1 Ton2 Ton3		
Tonnage Values for Posting Sign			Tonnage Values for Posting Sign		
General Text for Posting Sign			General Text for Posting Sign		
NO POSTING REQUIRED			NO POSTING REQUIRED		

Design_No = L0341



Missouri Department of Transportation
Bridge Inventory and Inspection System
Structural Inventory & Appraisal Sheet

December 2, 2024
1:56:41pm

COUNTY : POLK BRIDGE : L0341 REVIEW STATUS : APPROVED NBI STATUS : P
RECORD TYPE : ROUTE CARRIED 'ON' STRUCT RUN DATE : 1/31/2019 SUBMITTAL YEAR : 2018

GENERAL STRUCTURE INFORMATION			ROUTE DESIGNATION INFORMATION		
1	State	MISSOURI	5A	Record Type	ROUTE CARRIED 'ON' STRUCT
2	District	SW	5B	Route Signing Prefix	MO
3	County	POLK	5C	Designated Level of Service	MAINLINE
8	Federal ID No.	6215	5D	Route Number	00083
27	Year Built	1948	5E	Directional Suffix	NOT APPLICABLE
106	Year Reconstructed	0	7	Facility Carried	MO 83 S
42A	Type of Service On	HIGHWAY	12	Base Hwy. Network	NO
21	Structure Maintenance	STATE HIGHWAY AGENCY	13A	LRS Inventory Route No.	
22	Structure Owner	STATE HIGHWAY AGENCY	13B	Subroute No.	
33	Br. Median Code	NO MEDIAN	20	Toll Status	ON FREE ROAD
37	Historical Significance	NOT ELIGIBLE FOR NR OF HP	26	Functional Classification	07-RURAL MAJOR COLLECTOR
101	Parallel Struc Desg	NONE EXISTS	28A	Lanes on Structure	02
103	Temporary Structure	NOT TEMPORARY	100	STRAHNET Designation	RTE NOT A DEFENSE HWY
112	NBIS Bridge Length	YES	104	National Highway System	NOT ON NHS
			105	Federal Lands Highway	NOT APPLICABLE
			110	Designated Nat. Network	NO
STRUCTURE LOCATION INFORMATION			STRUCTURE TRAFFIC INFORMATION		
4	Place	POLK 90825	29	AADT	5289
	Code	90825	30	AADT Year	2017
9	Location	S 35 T 34 N R 23 W	102	Direction of Traffic	2-WAY TRAFFIC
11	Milepoint	52.69 miles	109	AADT Truck Percent	11%
16	Latitude	37 D 37 M 51 S	114	Future AADT	8462
17	Longitude	93 D 25 M 15 S	115	Future AADT Year	2037
UNDERRECORD INFORMATION			STRUCTURE GEOMETRIC INFORMATION		
6	Features Intersected	MILE CR	10	Inventory Rte. Vert. Clear	99 Ft. 99 In.
42B	Type of Service Under	WATERWAY	19	By pass Detour Length	14.26 miles
28B	Lanes Under Structure	00	32	Approach Roadway Width	25 Ft. 11 In.
54A	Vert. Clearance Ref.	N/A	34	Skew	45.00 Degrees
54B	Vert. Clearance	0 Ft. 0 In.	35	Struct. Flared	NO
55A	Rt. Lat Clear Ref.	N/A	47	Total Horiz. Clear	27 Ft. 11 In.
55B	Rt. Lat Clearance	0 Ft. 0 In.	48	Maximum Span Length	12 Ft. 2 In.
56	Left Lat Clearance	0 Ft. 0 In.	49	Structure Length	35 Ft. 5 In.
38	Navigation Control	PERMIT NOT REQ	50A	Left Curb/Sidewalk Width	0 Ft. 0 In.
39	Nav Vertical Clear	0 Ft. 0 In.	50B	Right Curb/Sidewalk Width	0 Ft. 0 In.
40	Nav Horizontal Clear	0 Ft. 0 In.	51	Curb to Curb Br. Width	30 Ft. 10 In.
111	Nav. Pier Protection		52	Deck Width (Out-Out)	35 Ft. 1 In.
116	Nav. Cl. Vert. Clear		53	Vert. Clearance Over Deck	99 Ft. 99 In.

Design_No = L0341



Missouri Department of Transportation
Bridge Inventory and Inspection System
Structural Inventory & Appraisal Sheet

December 2, 2024
1:56:41pm

COUNTY : POLK BRIDGE : L0341 REVIEW STATUS : APPROVED NBI STATUS : P
RECORD TYPE : ROUTE CARRIED 'ON' STRUCT RUN DATE : 1/31/2019 SUBMITTAL YEAR : 2018

LOAD RATING AND POSTING INFORMATION			MATERIAL/CONSTRUCTION INFORMATION		
31	Design Load	H 15	43A	Main Struc. Mat type	CONCRETE CONTINUOUS
41	Structure Status	A - OPEN NO RESTRICTIONS	43B	Main struc Constr. Type	CULVERT
63	Oper. Rating Meth.	LOAD FACTOR	45	# of Main Spans	2
64	Operating Rating	63 Tons.	44A	Appr Struc. Mat type	
65	Inventory Rating Meth	LOAD FACTOR	44B	Appr Struc. Cnstr. type	
66	Inventory Rating	38 Tons.	46	# of Approach Span	0
70	Bridge Posting Code	=>LEGAL LOADS	107	Deck Mat/Constr.	NA
PROPOSED IMPROVEMENT INFORMATION			108A	Wear Surf Mat/Constr.	NA
Sufficiency Rating 63.9 Percent			108B	Membrane Mat/Constr.	NA
Deficiency Rating FUNCTIONAL			108C	Deck Protect Mat/Constr.	NA
Funding Eligibility PARTIAL			CONDITION RATING INFORMATION		
75A	Proposed Work	REHAB-GENERAL DETERIORAT	58	Deck Cond. Rating	N
75B	Work Done By	Contract	59	Superstructure Cond. Rating	N
76	New Struc Length	0 Ft. 0 In.	60	Substructure Cond. Rating	N
94	Struc Improve Cost	\$ 170,000	61	Channel /Channel Protection Cond. Rating	4
95	Roadway Improve Cost	\$ 17,000	62	Culvert Cond. Rating	5
96	Total Project Cost	\$ 255,000	INSPECTION INFORMATION		
97	Year of Cost Estimates	2019	90	Gen. Insp Date	11 / 17
APPRAISAL RATING INFORMATION			91	Gen. Insp. Frequency	24 Months
36A	Br. Rail App. Rating	DOES NOT MEET ACCEPT STND	92A	Frac. Critical Inspection	N Months
36B	Transition Rail App. Rating	DOES NOT MEET ACCEPT STND	93A	Frac. Critical Insp. Date	
36C	Approach Rail App. Rating	DOES NOT MEET ACCEPT STND	92B	Underwater Inspection	N Months
36D	Rail End Treat. App. Rating	DOES NOT MEET ACCEPT STND	93B	Underwater Insp. Date	
67	Struc Eval App. Rating	5	92C	Special Inspection	N Months
68	Deck Geometry App. Rating	3	93C	Special Inspection Date	
69	Underclearance App. Rating	N	BORDER BRIDGE INFORMATION		
71	Waterway Adeq. App. Rating	6	98	Neighboring State Code	
72	Approach Road App. Rating	8	98B	Neighboring State % Respon	
113	Scour Assess App. Rating	4	99	Neighboring State Struc. No.	
APPROVED POSTING INFORMATION			FIELD POSTING INFORMATION		
Approved Posting Category S-1			Field Posting Category S-1		
Ton1 Ton2 Ton3			Ton1 Ton2 Ton3		
Tonnage Values for Posting Sign			Tonnage Values for Posting Sign		
General Text for Posting Sign			General Text for Posting Sign		
NO POSTING REQUIRED			NO POSTING REQUIRED		

Design_No = L0341



Missouri Department of Transportation
Bridge Inventory and Inspection System
Structural Inventory & Appraisal Sheet

December 2, 2024
1:56:41pm

COUNTY : POLK BRIDGE : L0341 REVIEW STATUS : APPROVED NBI STATUS : P
RECORD TYPE : ROUTE CARRIED 'ON' STRUCT RUN DATE : 3/9/2022 SUBMITTAL YEAR : 2021

GENERAL STRUCTURE INFORMATION			ROUTE DESIGNATION INFORMATION		
1	State	MISSOURI	5A	Record Type	ROUTE CARRIED 'ON' STRUCT
2	District	SW	5B	Route Signing Prefix	MO
3	County	POLK	5C	Designated Level of Service	MAINLINE
8	Federal ID No.	6215	5D	Route Number	00083
27	Year Built	1948	5E	Directional Suffix	NOT APPLICABLE
106	Year Reconstructed	0	7	Facility Carried	MO 83 S
42A	Type of Service On	HIGHWAY	12	Base Hwy. Network	NO
21	Structure Maintenance	STATE HIGHWAY AGENCY	13A	LRS Inventory Route No.	
22	Structure Owner	STATE HIGHWAY AGENCY	13B	Subroute No.	
33	Br. Median Code	NO MEDIAN	20	Toll Status	ON FREE ROAD
37	Historical Significance	NOT ELIGIBLE FOR NR OF HP	26	Functional Classification	07-RURAL MAJOR COLLECTOR
101	Parallel Struc Desg	NONE EXISTS	28A	Lanes on Structure	02
103	Temporary Structure	NOT TEMPORARY	100	STRAHNET Designation	RTE NOT A DEFENSE HWY
112	NBIS Bridge Length	YES	104	National Highway System	NOT ON NHS
			105	Federal Lands Highway	NOT APPLICABLE
			110	Designated Nat. Network	NO
STRUCTURE LOCATION INFORMATION			STRUCTURE TRAFFIC INFORMATION		
4	Place	POLK 90825	29	AADT	3997
	Code	90825	30	AADT Year	2021
9	Location	S 35 T 34 N R 23 W	102	Direction of Traffic	2-WAY TRAFFIC
11	Milepoint	52.69 miles	109	AADT Truck Percent	6%
16	Latitude	37 D 37 M 51 S	114	Future AADT	6395
17	Longitude	93 D 25 M 15 S	115	Future AADT Year	2041
UNDERRECORD INFORMATION			STRUCTURE GEOMETRIC INFORMATION		
6	Features Intersected	MILE CR	10	Inventory Rte. Vert. Clear	99 Ft. 99 In.
42B	Type of Service Under	WATERWAY	19	By pass Detour Length	14.26 miles
28B	Lanes Under Structure	00	32	Approach Roadway Width	25 Ft. 11 In.
54A	Vert. Clearance Ref.	N/A	34	Skew	45.00 Degrees
54B	Vert. Clearance	0 Ft. 0 In.	35	Struct. Flared	NO
55A	Rt. Lat Clear Ref.	N/A	47	Total Horiz. Clear	27 Ft. 11 In.
55B	Rt. Lat Clearance	0 Ft. 0 In.	48	Maximum Span Length	12 Ft. 2 In.
56	Left Lat Clearance	0 Ft. 0 In.	49	Structure Length	35 Ft. 5 In.
38	Navigation Control	PERMIT NOT REQ	50A	Left Curb/Sidewalk Width	0 Ft. 0 In.
39	Nav Vertical Clear	0 Ft. 0 In.	50B	Right Curb/Sidewalk Width	0 Ft. 0 In.
40	Nav Horizontal Clear	0 Ft. 0 In.	51	Curb to Curb Br. Width	30 Ft. 10 In.
111	Nav. Pier Protection		52	Deck Width (Out-Out)	35 Ft. 1 In.
116	Nav. Cl. Vert. Clear		53	Vert. Clearance Over Deck	99 Ft. 99 In.

Design_No = L0341



Missouri Department of Transportation
Bridge Inventory and Inspection System
Structural Inventory & Appraisal Sheet

December 2, 2024
1:56:41pm

COUNTY : POLK BRIDGE : L0341 REVIEW STATUS : APPROVED NBI STATUS : P
RECORD TYPE : ROUTE CARRIED 'ON' STRUCT RUN DATE : 3/9/2022 SUBMITTAL YEAR : 2021

LOAD RATING AND POSTING INFORMATION			MATERIAL/CONSTRUCTION INFORMATION		
31	Design Load	H 15	43A	Main Struc. Mat type	CONCRETE CONTINUOUS
41	Structure Status	A - OPEN NO RESTRICTIONS	43B	Main struc Constr. Type	CULVERT
63	Oper. Rating Meth.	LOAD FACTOR	45	# of Main Spans	2
64	Operating Rating	63 Tons.	44A	Appr Struc. Mat type	
65	Inventory Rating Meth	LOAD FACTOR	44B	Appr Struc. Cnstr. type	
66	Inventory Rating	38 Tons.	46	# of Approach Span	0
70	Bridge Posting Code	=>LEGAL LOADS	107	Deck Mat/Constr.	NA
PROPOSED IMPROVEMENT INFORMATION			108A	Wear Surf Mat/Constr.	NA
Sufficiency Rating 68.1 Percent			108B	Membrane Mat/Constr.	NA
Deficiency Rating NOT DEFICIENT			108C	Deck Protect Mat/Constr.	NA
Funding Eligibility			CONDITION RATING INFORMATION		
75A	Proposed Work		58	Deck Cond. Rating	N
75B	Work Done By		59	Superstructure Cond. Rating	N
76	New Struc Length	0 Ft. 0 In.	60	Substructure Cond. Rating	N
94	Struc Improve Cost	\$ 0,000	61	Channel /Channel Protection Cond. Rating	4
95	Roadway Improve Cost	\$ 0,000	62	Culvert Cond. Rating	5
96	Total Project Cost	\$ 0,000	INSPECTION INFORMATION		
97	Year of Cost Estimates	0	90	Gen. Insp Date	11 / 21
APPRAISAL RATING INFORMATION			91	Gen. Insp. Frequency	24 Months
36A	Br. Rail App. Rating	DOES NOT MEET ACCEPT STND	92A	Frac. Critical Inspection	N Months
36B	Transition Rail App. Rating	DOES NOT MEET ACCEPT STND	93A	Frac. Critical Insp. Date	
36C	Approach Rail App. Rating	DOES NOT MEET ACCEPT STND	92B	Underwater Inspection	N Months
36D	Rail End Treat. App. Rating	DOES NOT MEET ACCEPT STND	93B	Underwater Insp. Date	
67	Struc Eval App. Rating	5	92C	Special Inspection	N Months
68	Deck Geometry App. Rating	4	93C	Special Inspection Date	
69	Underclearance App. Rating	N	BORDER BRIDGE INFORMATION		
71	Waterway Adeq. App. Rating	6	98	Neighboring State Code	
72	Approach Road App. Rating	8	98B	Neighboring State % Respon	
113	Scour Assess App. Rating	4	99	Neighboring State Struc. No.	
APPROVED POSTING INFORMATION			FIELD POSTING INFORMATION		
Approved Posting Category S-1			Field Posting Category S-1		
Ton1 Ton2 Ton3			Ton1 Ton2 Ton3		
Tonnage Values for Posting Sign			Tonnage Values for Posting Sign		
General Text for Posting Sign			General Text for Posting Sign		
NO POSTING REQUIRED			NO POSTING REQUIRED		

Design_No = L0341



Missouri Department of Transportation
Bridge Inventory and Inspection System
Structural Inventory & Appraisal Sheet

December 2, 2024
1:56:41pm

COUNTY : POLK BRIDGE : L0341 REVIEW STATUS : APPROVED NBI STATUS : P
RECORD TYPE : ROUTE CARRIED 'ON' STRUCT RUN DATE : 2/24/2004 SUBMITTAL YEAR : 2003

GENERAL STRUCTURE INFORMATION			ROUTE DESIGNATION INFORMATION		
1	State	MISSOURI	5A	Record Type	ROUTE CARRIED 'ON' STRUCT
2	District	SW	5B	Route Signing Prefix	MO
3	County	POLK	5C	Designated Level of Service	MAINLINE
8	Federal ID No.	6215	5D	Route Number	00083
27	Year Built	1948	5E	Directional Suffix	NOT APPLICABLE
106	Year Reconstructed	0	7	Facility Carried	MO 83 S
42A	Type of Service On	HIGHWAY	12	Base Hwy. Network	NO
21	Structure Maintenance	STATE HIGHWAY AGENCY	13A	LRS Inventory Route No.	
22	Structure Owner	STATE HIGHWAY AGENCY	13B	Subroute No.	
33	Br. Median Code	NO MEDIAN	20	Toll Status	ON FREE ROAD
37	Historical Significance	NOT ELIGIBLE FOR NR OF HP	26	Functional Classification	07-RURAL MAJOR COLLECTOR
101	Parallel Struc Desg	NONE EXISTS	28A	Lanes on Structure	02
103	Temporary Structure	NOT TEMPORARY	100	STRAHNET Designation	RTE NOT A DEFENSE HWY
112	NBIS Bridge Length	YES	104	National Highway System	NOT ON NHS
			105	Federal Lands Highway	NOT APPLICABLE
			110	Designated Nat. Network	NO
STRUCTURE LOCATION INFORMATION			STRUCTURE TRAFFIC INFORMATION		
4	Place	POLK 90825	29	AADT	4401
	Code	90825	30	AADT Year	2002
9	Location	S 35 T 34N R 23W	102	Direction of Traffic	2-WAY TRAFFIC
11	Milepoint	52.76 miles	109	AADT Truck Percent	10%
16	Latitude	37 D 37 M 54 S	114	Future AADT	7041
17	Longitude	93 D 25 M 12 S	115	Future AADT Year	2024
UNDERRECORD INFORMATION			STRUCTURE GEOMETRIC INFORMATION		
6	Features Intersected	MILE CR	10	Inventory Rte. Vert. Clear	99 Ft. 99 In.
42B	Type of Service Under	WATERWAY	19	By pass Detour Length	14.26 miles
28B	Lanes Under Structure	00	32	Approach Roadway Width	25 Ft. 11 In.
54A	Vert. Clearance Ref.	N/A	34	Skew	45.00 Degrees
54B	Vert. Clearance	0 Ft. 0 In.	35	Struct. Flared	NO
55A	Rt. Lat Clear Ref.	N/A	47	Total Horiz. Clear	27 Ft. 11 In.
55B	Rt. Lat Clearance	0 Ft. 0 In.	48	Maximum Span Length	12 Ft. 2 In.
56	Left Lat Clearance	0 Ft. 0 In.	49	Structure Length	35 Ft. 5 In.
38	Navigation Control	PERMIT NOT REQ	50A	Left Curb/Sidewalk Width	0 Ft. 0 In.
39	Nav Vertical Clear	0 Ft. 0 In.	50B	Right Curb/Sidewalk Width	0 Ft. 0 In.
40	Nav Horizontal Clear	0 Ft. 0 In.	51	Curb to Curb Br. Width	30 Ft. 10 In.
111	Nav. Pier Protection		52	Deck Width (Out-Out)	35 Ft. 1 In.
116	Nav. Cl. Vert. Clear		53	Vert. Clearance Over Deck	99 Ft. 99 In.

Design_No = L0341



Missouri Department of Transportation
Bridge Inventory and Inspection System
Structural Inventory & Appraisal Sheet

December 2, 2024
1:56:41pm

COUNTY : POLK BRIDGE : L0341 REVIEW STATUS : APPROVED NBI STATUS : P
RECORD TYPE : ROUTE CARRIED 'ON' STRUCT RUN DATE : 2/24/2004 SUBMITTAL YEAR : 2003

LOAD RATING AND POSTING INFORMATION			MATERIAL/CONSTRUCTION INFORMATION		
31	Design Load	H 15	43A	Main Struc. Mat type	CONCRETE CONTINUOUS
41	Structure Status	A - OPEN NO RESTRICTIONS	43B	Main struc Constr. Type	CULVERT
63	Oper. Rating Meth.	NO RATING ANALYSIS PERFORMED	45	# of Main Spans	2
64	Operating Rating	55 Tons.	44A	Appr Struc. Mat type	
65	Inventory Rating Meth	NO RATING ANALYSIS PERFORMED	44B	Appr Struc. Cnstr. type	
66	Inventory Rating	19 Tons.	46	# of Approach Span	0
70	Bridge Posting Code	=>LEGAL LOADS	107	Deck Mat/Constr.	NA
PROPOSED IMPROVEMENT INFORMATION			108A	Wear Surf Mat/Constr.	NA
Sufficiency Rating 46.8 Percent			108B	Membrane Mat/Constr.	NA
Deficiency Rating NOT DEFICIENT			108C	Deck Protect Mat/Constr.	NA
Funding Eligibility			CONDITION RATING INFORMATION		
75A	Proposed Work		58	Deck Cond. Rating	N
75B	Work Done By		59	Superstructure Cond. Rating	N
76	New Struc Length	0 Ft. 0 In.	60	Substructure Cond. Rating	N
94	Struc Improve Cost	\$ 0,000	61	Channel /Channel Protection Cond. Rating	5
95	Roadway Improve Cost	\$ 0,000	62	Culvert Cond. Rating	5
96	Total Project Cost	\$ 0,000	INSPECTION INFORMATION		
97	Year of Cost Estimates	0	90	Gen. Insp Date	12 / 03
APPRAISAL RATING INFORMATION			91	Gen. Insp. Frequency	24 Months
36A	Br. Rail App. Rating	MEETS ACCEPTABLE STANDARDS	92A	Frac. Critical Inspection	N Months
36B	Transition Rail App. Rating	MEETS ACCEPTABLE STANDARDS	93A	Frac. Critical Insp. Date	
36C	Approach Rail App. Rating	MEETS ACCEPTABLE STANDARDS	92B	Underwater Inspection	N Months
36D	Rail End Treat. App. Rating	MEETS ACCEPTABLE STANDARDS	93B	Underwater Insp. Date	
67	Struc Eval App. Rating	4	92C	Special Inspection	N Months
68	Deck Geometry App. Rating	4	93C	Special Inspection Date	
69	Underclearance App. Rating	N	BORDER BRIDGE INFORMATION		
71	Waterway Adeq. App. Rating	6	98	Neighboring State Code	
72	Approach Road App. Rating	8	98B	Neighboring State % Respon	
113	Scour Assess App. Rating	8	99	Neighboring State Struc. No.	
APPROVED POSTING INFORMATION			FIELD POSTING INFORMATION		
Approved Posting Category S-1			Field Posting Category S-1		
Ton1 Ton2 Ton3			Ton1 Ton2 Ton3		
Tonnage Values for Posting Sign			Tonnage Values for Posting Sign		
General Text for Posting Sign			General Text for Posting Sign		
NO POSTING REQUIRED			NO POSTING REQUIRED		

Design_No = L0341



Missouri Department of Transportation
Bridge Inventory and Inspection System
Structural Inventory & Appraisal Sheet

December 2, 2024
1:56:41pm

COUNTY : POLK BRIDGE : L0341 REVIEW STATUS : APPROVED NBI STATUS : P
RECORD TYPE : ROUTE CARRIED 'ON' STRUCT RUN DATE : 1/6/2017 SUBMITTAL YEAR : 2016

GENERAL STRUCTURE INFORMATION			ROUTE DESIGNATION INFORMATION		
1	State	MISSOURI	5A	Record Type	ROUTE CARRIED 'ON' STRUCT
2	District	SW	5B	Route Signing Prefix	MO
3	County	POLK	5C	Designated Level of Service	MAINLINE
8	Federal ID No.	6215	5D	Route Number	00083
27	Year Built	1948	5E	Directional Suffix	NOT APPLICABLE
106	Year Reconstructed	0	7	Facility Carried	MO 83 S
42A	Type of Service On	HIGHWAY	12	Base Hwy. Network	NO
21	Structure Maintenance	STATE HIGHWAY AGENCY	13A	LRS Inventory Route No.	
22	Structure Owner	STATE HIGHWAY AGENCY	13B	Subroute No.	
33	Br. Median Code	NO MEDIAN	20	Toll Status	ON FREE ROAD
37	Historical Significance	NOT ELIGIBLE FOR NR OF HP	26	Functional Classification	07-RURAL MAJOR COLLECTOR
101	Parallel Struc Desg	NONE EXISTS	28A	Lanes on Structure	02
103	Temporary Structure	NOT TEMPORARY	100	STRAHNET Designation	RTE NOT A DEFENSE HWY
112	NBIS Bridge Length	YES	104	National Highway System	NOT ON NHS
			105	Federal Lands Highway	NOT APPLICABLE
			110	Designated Nat. Network	NO
STRUCTURE LOCATION INFORMATION			STRUCTURE TRAFFIC INFORMATION		
4	Place	POLK 90825	29	AADT	3832
	Code	90825	30	AADT Year	2016
9	Location	S 35 T 34 N R 23 W	102	Direction of Traffic	2-WAY TRAFFIC
11	Milepoint	52.69 miles	109	AADT Truck Percent	10%
16	Latitude	37 D 37 M 51 S	114	Future AADT	6131
17	Longitude	93 D 25 M 15 S	115	Future AADT Year	2037
UNDERRECORD INFORMATION			STRUCTURE GEOMETRIC INFORMATION		
6	Features Intersected	MILE CR	10	Inventory Rte. Vert. Clear	99 Ft. 99 In.
42B	Type of Service Under	WATERWAY	19	By pass Detour Length	14.26 miles
28B	Lanes Under Structure	00	32	Approach Roadway Width	25 Ft. 11 In.
54A	Vert. Clearance Ref.	N/A	34	Skew	45.00 Degrees
54B	Vert. Clearance	0 Ft. 0 In.	35	Struct. Flared	NO
55A	Rt. Lat Clear Ref.	N/A	47	Total Horiz. Clear	27 Ft. 11 In.
55B	Rt. Lat Clearance	0 Ft. 0 In.	48	Maximum Span Length	12 Ft. 2 In.
56	Left Lat Clearance	0 Ft. 0 In.	49	Structure Length	35 Ft. 5 In.
38	Navigation Control	PERMIT NOT REQ	50A	Left Curb/Sidewalk Width	0 Ft. 0 In.
39	Nav Vertical Clear	0 Ft. 0 In.	50B	Right Curb/Sidewalk Width	0 Ft. 0 In.
40	Nav Horizontal Clear	0 Ft. 0 In.	51	Curb to Curb Br. Width	30 Ft. 10 In.
111	Nav. Pier Protection		52	Deck Width (Out-Out)	35 Ft. 1 In.
116	Nav. Cl. Vert. Clear		53	Vert. Clearance Over Deck	99 Ft. 99 In.

Design_No = L0341



Missouri Department of Transportation
Bridge Inventory and Inspection System
Structural Inventory & Appraisal Sheet

December 2, 2024
1:56:41pm

COUNTY : POLK BRIDGE : L0341 REVIEW STATUS : APPROVED NBI STATUS : P
RECORD TYPE : ROUTE CARRIED 'ON' STRUCT RUN DATE : 1/6/2017 SUBMITTAL YEAR : 2016

LOAD RATING AND POSTING INFORMATION			MATERIAL/CONSTRUCTION INFORMATION		
31	Design Load	H 15	43A	Main Struc. Mat type	CONCRETE CONTINUOUS
41	Structure Status	A - OPEN NO RESTRICTIONS	43B	Main struc Constr. Type	CULVERT
63	Oper. Rating Meth.	LOAD FACTOR	45	# of Main Spans	2
64	Operating Rating	63 Tons.	44A	Appr Struc. Mat type	
65	Inventory Rating Meth	LOAD FACTOR	44B	Appr Struc. Cnstr. type	
66	Inventory Rating	38 Tons.	46	# of Approach Span	0
70	Bridge Posting Code	=>LEGAL LOADS	107	Deck Mat/Constr.	NA
			108A	Wear Surf Mat/Constr.	NA
			108B	Membrane Mat/Constr.	NA
			108C	Deck Protect Mat/Constr.	NA
PROPOSED IMPROVEMENT INFORMATION			CONDITION RATING INFORMATION		
Sufficiency Rating 68.3 Percent			58	Deck Cond. Rating	N
Deficiency Rating NOT DEFICIENT			59	Superstructure Cond. Rating	N
Funding Eligibility			60	Substructure Cond. Rating	N
75A	Proposed Work		61	Channel /Channel Protection Cond. Rating	5
75B	Work Done By		62	Culvert Cond. Rating	5
76	New Struc Length	0 Ft. 0 In.			
94	Struc Improve Cost	\$ 0,000	INSPECTION INFORMATION		
95	Roadway Improve Cost	\$ 0,000	90	Gen. Insp Date	11 / 15
96	Total Project Cost	\$ 0,000	91	Gen. Insp. Frequency	24 Months
97	Year of Cost Estimates	0	92A	Frac. Critical Inspection	N Months
			93A	Frac. Critical Insp. Date	
			92B	Underwater Inspection	N Months
			93B	Underwater Insp. Date	
			92C	Special Inspection	N Months
			93C	Special Inspection Date	
APPRAISAL RATING INFORMATION			BORDER BRIDGE INFORMATION		
36A	Br. Rail App. Rating	DOES NOT MEET ACCEPT STND	98	Neighboring State Code	
36B	Transition Rail App. Rating	DOES NOT MEET ACCEPT STND	98B	Neighboring State % Respon	
36C	Approach Rail App. Rating	DOES NOT MEET ACCEPT STND	99	Neighboring State Struc. No.	
36D	Rail End Treat. App. Rating	DOES NOT MEET ACCEPT STND			
67	Struc Eval App. Rating	5	APPROVED POSTING INFORMATION		
68	Deck Geometry App. Rating	4	FIELD POSTING INFORMATION		
69	Underclearance App. Rating	N	Approved Posting Category S-1		
71	Waterway Adeq. App. Rating	6	Ton1 Ton2 Ton3		
72	Approach Road App. Rating	8	Tonnage Values for Posting Sign		
113	Scour Assess App. Rating	8	General Text for Posting Sign		
			NO POSTING REQUIRED		

Design_No = L0341



Missouri Department of Transportation
Bridge Inventory and Inspection System
Structural Inventory & Appraisal Sheet

December 2, 2024
1:56:41pm

COUNTY : POLK BRIDGE : L0341 REVIEW STATUS : APPROVED NBI STATUS : T
RECORD TYPE : ROUTE CARRIED 'ON' STRUCT RUN DATE : 3/21/2024 SUBMITTAL YEAR : 2024

GENERAL STRUCTURE INFORMATION			ROUTE DESIGNATION INFORMATION		
1	State	MISSOURI	5A	Record Type	ROUTE CARRIED 'ON' STRUCT
2	District	SW	5B	Route Signing Prefix	MO
3	County	POLK	5C	Designated Level of Service	MAINLINE
8	Federal ID No.	6215	5D	Route Number	00083
27	Year Built	1948	5E	Directional Suffix	NOT APPLICABLE
106	Year Reconstructed	0	7	Facility Carried	MO 83 S
42A	Type of Service On	HIGHWAY	12	Base Hwy. Network	NO
21	Structure Maintenance	STATE HIGHWAY AGENCY	13A	LRS Inventory Route No.	
22	Structure Owner	STATE HIGHWAY AGENCY	13B	Subroute No.	
33	Br. Median Code	NO MEDIAN	20	Toll Status	ON FREE ROAD
37	Historical Significance	NOT ELIGIBLE FOR NR OF HP	26	Functional Classification	07-RURAL MAJOR COLLECTOR
101	Parallel Struc Desg	NONE EXISTS	28A	Lanes on Structure	02
103	Temporary Structure	NOT TEMPORARY	100	STRAHNET Designation	RTE NOT A DEFENSE HWY
112	NBIS Bridge Length	YES	104	National Highway System	NOT ON NHS
			105	Federal Lands Highway	NOT APPLICABLE
			110	Designated Nat. Network	NO
STRUCTURE LOCATION INFORMATION			STRUCTURE TRAFFIC INFORMATION		
4	Place	POLK 90825	29	AADT	4308
	Code	90825	30	AADT Year	2023
9	Location	S 35 T 34 N R 23 W	102	Direction of Traffic	2-WAY TRAFFIC
11	Milepoint	53.11 miles	109	AADT Truck Percent	6%
16	Latitude	37 D 37 M 51 S	114	Future AADT	6893
17	Longitude	93 D 25 M 15 S	115	Future AADT Year	2043
UNDERRECORD INFORMATION			STRUCTURE GEOMETRIC INFORMATION		
6	Features Intersected	MILE CR	10	Inventory Rte. Vert. Clear	99 Ft. 99 In.
42B	Type of Service Under	WATERWAY	19	By pass Detour Length	14.38 miles
28B	Lanes Under Structure	00	32	Approach Roadway Width	25 Ft. 11 In.
54A	Vert. Clearance Ref.	N/A	34	Skew	45.00 Degrees
54B	Vert. Clearance	0 Ft. 0 In.	35	Struct. Flared	NO
55A	Rt. Lat Clear Ref.	N/A	47	Total Horiz. Clear	27 Ft. 11 In.
55B	Rt. Lat Clearance	0 Ft. 0 In.	48	Maximum Span Length	12 Ft. 2 In.
56	Left Lat Clearance	0 Ft. 0 In.	49	Structure Length	35 Ft. 5 In.
38	Navigation Control	PERMIT NOT REQ	50A	Left Curb/Sidewalk Width	0 Ft. 0 In.
39	Nav Vertical Clear	0 Ft. 0 In.	50B	Right Curb/Sidewalk Width	0 Ft. 0 In.
40	Nav Horizontal Clear	0 Ft. 0 In.	51	Curb to Curb Br. Width	30 Ft. 10 In.
111	Nav. Pier Protection		52	Deck Width (Out-Out)	35 Ft. 1 In.
116	Nav. Cl. Vert. Clear		53	Vert. Clearance Over Deck	99 Ft. 99 In.

Design_No = L0341



Missouri Department of Transportation
Bridge Inventory and Inspection System
Structural Inventory & Appraisal Sheet

December 2, 2024
1:56:41pm

COUNTY : POLK BRIDGE : L0341 REVIEW STATUS : APPROVED NBI STATUS : T
RECORD TYPE : ROUTE CARRIED 'ON' STRUCT RUN DATE : 3/21/2024 SUBMITTAL YEAR : 2024

LOAD RATING AND POSTING INFORMATION			MATERIAL/CONSTRUCTION INFORMATION		
31	Design Load	H 15	43A	Main Struc. Mat type	CONCRETE CONTINUOUS
41	Structure Status	OPEN NO RESTRICTIONS	43B	Main struc Constr. Type	CULVERT
63	Oper. Rating Meth.	LOAD FACTOR	45	# of Main Spans	2
64	Operating Rating	63 Tons.	44A	Appr Struc. Mat type	000
65	Inventory Rating Meth	LOAD FACTOR	44B	Appr Struc. Cnstr. type	000
66	Inventory Rating	38 Tons.	46	# of Approach Span	0
70	Bridge Posting Code	=>LEGAL LOADS	107	Deck Mat/Constr.	NA
PROPOSED IMPROVEMENT INFORMATION			108A	Wear Surf Mat/Constr.	NA
Sufficiency Rating 67.6 Percent			108B	Membrane Mat/Constr.	NA
Deficiency Rating NOT DEFICIENT			108C	Deck Protect Mat/Constr.	NA
Funding Eligibility			CONDITION RATING INFORMATION		
75A	Proposed Work		58	Deck Cond. Rating	N
75B	Work Done By		59	Superstructure Cond. Rating	N
76	New Struc Length	0 Ft. 0 In.	60	Substructure Cond. Rating	N
94	Struc Improve Cost	\$ 0,000	61	Channel /Channel Protection Cond. Rating	4
95	Roadway Improve Cost	\$ 0,000	62	Culvert Cond. Rating	5
96	Total Project Cost	\$ 0,000	INSPECTION INFORMATION		
97	Year of Cost Estimates	0	90	Gen. Insp Date	11 / 23
APPRAISAL RATING INFORMATION			91	Gen. Insp. Frequency	24 Months
36A	Br. Rail App. Rating	DOES NOT MEET ACCEPT STND	92A	Frac. Critical Inspection	N Months
36B	Transition Rail App. Rating	DOES NOT MEET ACCEPT STND	93A	Frac. Critical Insp. Date	
36C	Approach Rail App. Rating	DOES NOT MEET ACCEPT STND	92B	Underwater Inspection	N Months
36D	Rail End Treat. App. Rating	DOES NOT MEET ACCEPT STND	93B	Underwater Insp. Date	
67	Struc Eval App. Rating	5	92C	Special Inspection	N Months
68	Deck Geometry App. Rating	4	93C	Special Inspection Date	
69	Underclearance App. Rating	N	BORDER BRIDGE INFORMATION		
71	Waterway Adeq. App. Rating	6	98	Neighboring State Code	
72	Approach Road App. Rating	8	98B	Neighboring State % Respon	
113	Scour Assess App. Rating	4	99	Neighboring State Struc. No.	
APPROVED POSTING INFORMATION			FIELD POSTING INFORMATION		
Approved Posting Category S-1			Field Posting Category S-1		
Ton1 Ton2 Ton3			Ton1 Ton2 Ton3		
Tonnage Values for Posting Sign			Tonnage Values for Posting Sign		
General Text for Posting Sign			General Text for Posting Sign		
NO POSTING REQUIRED			NO POSTING REQUIRED		

Design_No = L0341



Missouri Department of Transportation
Bridge Inventory and Inspection System
Structural Inventory & Appraisal Sheet

December 2, 2024
1:56:41pm

COUNTY : POLK BRIDGE : L0341 REVIEW STATUS : APPROVED NBI STATUS : P
RECORD TYPE : ROUTE CARRIED 'ON' STRUCT RUN DATE : 1/23/2008 SUBMITTAL YEAR : 2007

GENERAL STRUCTURE INFORMATION			ROUTE DESIGNATION INFORMATION		
1	State	MISSOURI	5A	Record Type	ROUTE CARRIED 'ON' STRUCT
2	District	SW	5B	Route Signing Prefix	MO
3	County	POLK	5C	Designated Level of Service	MAINLINE
8	Federal ID No.	6215	5D	Route Number	00083
27	Year Built	1948	5E	Directional Suffix	NOT APPLICABLE
106	Year Reconstructed	0	7	Facility Carried	MO 83 S
42A	Type of Service On	HIGHWAY	12	Base Hwy. Network	NO
21	Structure Maintenance	STATE HIGHWAY AGENCY	13A	LRS Inventory Route No.	
22	Structure Owner	STATE HIGHWAY AGENCY	13B	Subroute No.	
33	Br. Median Code	NO MEDIAN	20	Toll Status	ON FREE ROAD
37	Historical Significance	NOT ELIGIBLE FOR NR OF HP	26	Functional Classification	07-RURAL MAJOR COLLECTOR
101	Parallel Struc Desg	NONE EXISTS	28A	Lanes on Structure	02
103	Temporary Structure	NOT TEMPORARY	100	STRAHNET Designation	RTE NOT A DEFENSE HWY
112	NBIS Bridge Length	YES	104	National Highway System	NOT ON NHS
			105	Federal Lands Highway	NOT APPLICABLE
			110	Designated Nat. Network	NO
STRUCTURE LOCATION INFORMATION			STRUCTURE TRAFFIC INFORMATION		
4	Place	POLK 90825	29	AADT	4749
	Code	90825	30	AADT Year	2006
9	Location	S 35 T 34 N R 23 W	102	Direction of Traffic	2-WAY TRAFFIC
11	Milepoint	52.69 miles	109	AADT Truck Percent	10%
16	Latitude	37 D 37 M 54 S	114	Future AADT	7598
17	Longitude	93 D 25 M 12 S	115	Future AADT Year	2028
UNDERRECORD INFORMATION			STRUCTURE GEOMETRIC INFORMATION		
6	Features Intersected	MILE CR	10	Inventory Rte. Vert. Clear	99 Ft. 99 In.
42B	Type of Service Under	WATERWAY	19	By pass Detour Length	14.26 miles
28B	Lanes Under Structure	00	32	Approach Roadway Width	25 Ft. 11 In.
54A	Vert. Clearance Ref.	N/A	34	Skew	45.00 Degrees
54B	Vert. Clearance	0 Ft. 0 In.	35	Struct. Flared	NO
55A	Rt. Lat Clear Ref.	N/A	47	Total Horiz. Clear	27 Ft. 11 In.
55B	Rt. Lat Clearance	0 Ft. 0 In.	48	Maximum Span Length	12 Ft. 2 In.
56	Left Lat Clearance	0 Ft. 0 In.	49	Structure Length	35 Ft. 5 In.
38	Navigation Control	PERMIT NOT REQ	50A	Left Curb/Sidewalk Width	0 Ft. 0 In.
39	Nav Vertical Clear	0 Ft. 0 In.	50B	Right Curb/Sidewalk Width	0 Ft. 0 In.
40	Nav Horizontal Clear	0 Ft. 0 In.	51	Curb to Curb Br. Width	30 Ft. 10 In.
111	Nav. Pier Protection		52	Deck Width (Out-Out)	35 Ft. 1 In.
116	Nav. Cl. Vert. Clear		53	Vert. Clearance Over Deck	99 Ft. 99 In.

Design_No = L0341



Missouri Department of Transportation
Bridge Inventory and Inspection System
Structural Inventory & Appraisal Sheet

December 2, 2024
1:56:41pm

COUNTY : POLK BRIDGE : L0341 REVIEW STATUS : APPROVED NBI STATUS : P
RECORD TYPE : ROUTE CARRIED 'ON' STRUCT RUN DATE : 1/23/2008 SUBMITTAL YEAR : 2007

LOAD RATING AND POSTING INFORMATION			MATERIAL/CONSTRUCTION INFORMATION		
31	Design Load	H 15	43A	Main Struc. Mat type	CONCRETE CONTINUOUS
41	Structure Status	A - OPEN NO RESTRICTIONS	43B	Main struc Constr. Type	CULVERT
63	Oper. Rating Meth.	NO RATING ANALYSIS PERFMD	45	# of Main Spans	2
64	Operating Rating	55 Tons.	44A	Appr Struc. Mat type	
65	Inventory Rating Meth	NO RATING ANALYSIS PERFMD	44B	Appr Struc. Cnstr. type	
66	Inventory Rating	19 Tons.	46	# of Approach Span	0
70	Bridge Posting Code	=>LEGAL LOADS	107	Deck Mat/Constr.	NA
PROPOSED IMPROVEMENT INFORMATION			108A	Wear Surf Mat/Constr.	NA
Sufficiency Rating 46.0 Percent			108B	Membrane Mat/Constr.	NA
Deficiency Rating NOT DEFICIENT			108C	Deck Protect Mat/Constr.	NA
Funding Eligibility			CONDITION RATING INFORMATION		
75A	Proposed Work		58	Deck Cond. Rating	N
75B	Work Done By		59	Superstructure Cond. Rating	N
76	New Struc Length	0 Ft. 0 In.	60	Substructure Cond. Rating	N
94	Struc Improve Cost	\$ 0,000	61	Channel /Channel Protection Cond. Rating	5
95	Roadway Improve Cost	\$ 0,000	62	Culvert Cond. Rating	5
96	Total Project Cost	\$ 0,000	INSPECTION INFORMATION		
97	Year of Cost Estimates	0	90	Gen. Insp Date	11 / 07
APPRAISAL RATING INFORMATION			91	Gen. Insp. Frequency	24 Months
36A	Br. Rail App. Rating	MEETS ACCEPTBLE STND	92A	Frac. Critical Inspection	N Months
36B	Transition Rail App. Rating	MEETS ACCEPTBLE STND	93A	Frac. Critical Insp. Date	
36C	Approach Rail App. Rating	MEETS ACCEPTBLE STND	92B	Underwater Inspection	N Months
36D	Rail End Treat. App. Rating	MEETS ACCEPTBLE STND	93B	Underwater Insp. Date	
67	Struc Eval App. Rating	4	92C	Special Inspection	N Months
68	Deck Geometry App. Rating	4	93C	Special Inspection Date	
69	Underclearance App. Rating	N	BORDER BRIDGE INFORMATION		
71	Waterway Adeq. App. Rating	6	98	Neighboring State Code	
72	Approach Road App. Rating	8	98B	Neighboring State % Respon	
113	Scour Assess App. Rating	8	99	Neighboring State Struc. No.	
APPROVED POSTING INFORMATION			FIELD POSTING INFORMATION		
Approved Posting Category S-1			Field Posting Category S-1		
Ton1 Ton2 Ton3			Ton1 Ton2 Ton3		
Tonnage Values for Posting Sign			Tonnage Values for Posting Sign		
General Text for Posting Sign			General Text for Posting Sign		
NO POSTING REQUIRED			NO POSTING REQUIRED		

Design_No = L0341



Missouri Department of Transportation
Bridge Inventory and Inspection System
Structural Inventory & Appraisal Sheet

December 2, 2024
1:56:41pm

COUNTY : POLK BRIDGE : L0341 REVIEW STATUS : APPROVED NBI STATUS : P
RECORD TYPE : ROUTE CARRIED 'ON' STRUCT RUN DATE : 1/26/2010 SUBMITTAL YEAR : 2009

GENERAL STRUCTURE INFORMATION			ROUTE DESIGNATION INFORMATION		
1	State	MISSOURI	5A	Record Type	ROUTE CARRIED 'ON' STRUCT
2	District	SW	5B	Route Signing Prefix	MO
3	County	POLK	5C	Designated Level of Service	MAINLINE
8	Federal ID No.	6215	5D	Route Number	00083
27	Year Built	1948	5E	Directional Suffix	NOT APPLICABLE
106	Year Reconstructed	0	7	Facility Carried	MO 83 S
42A	Type of Service On	HIGHWAY	12	Base Hwy. Network	NO
21	Structure Maintenance	STATE HIGHWAY AGENCY	13A	LRS Inventory Route No.	
22	Structure Owner	STATE HIGHWAY AGENCY	13B	Subroute No.	
33	Br. Median Code	NO MEDIAN	20	Toll Status	ON FREE ROAD
37	Historical Significance	NOT ELIGIBLE FOR NR OF HP	26	Functional Classification	07-RURAL MAJOR COLLECTOR
101	Parallel Struc Desg	NONE EXISTS	28A	Lanes on Structure	02
103	Temporary Structure	NOT TEMPORARY	100	STRAHNET Designation	RTE NOT A DEFENSE HWY
112	NBIS Bridge Length	YES	104	National Highway System	NOT ON NHS
			105	Federal Lands Highway	NOT APPLICABLE
			110	Designated Nat. Network	NO
STRUCTURE LOCATION INFORMATION			STRUCTURE TRAFFIC INFORMATION		
4	Place	POLK 90825	29	AADT	4703
	Code	90825	30	AADT Year	2008
9	Location	S 35 T 34 N R 23 W	102	Direction of Traffic	2-WAY TRAFFIC
11	Milepoint	52.69 miles	109	AADT Truck Percent	10%
16	Latitude	37 D 37 M 54 S	114	Future AADT	7524
17	Longitude	93 D 25 M 12 S	115	Future AADT Year	2030
UNDERRECORD INFORMATION			STRUCTURE GEOMETRIC INFORMATION		
6	Features Intersected	MILE CR	10	Inventory Rte. Vert. Clear	99 Ft. 99 In.
42B	Type of Service Under	WATERWAY	19	By pass Detour Length	14.26 miles
28B	Lanes Under Structure	00	32	Approach Roadway Width	25 Ft. 11 In.
54A	Vert. Clearance Ref.	N/A	34	Skew	45.00 Degrees
54B	Vert. Clearance	0 Ft. 0 In.	35	Struct. Flared	NO
55A	Rt. Lat Clear Ref.	N/A	47	Total Horiz. Clear	27 Ft. 11 In.
55B	Rt. Lat Clearance	0 Ft. 0 In.	48	Maximum Span Length	12 Ft. 2 In.
56	Left Lat Clearance	0 Ft. 0 In.	49	Structure Length	35 Ft. 5 In.
38	Navigation Control	PERMIT NOT REQ	50A	Left Curb/Sidewalk Width	0 Ft. 0 In.
39	Nav Vertical Clear	0 Ft. 0 In.	50B	Right Curb/Sidewalk Width	0 Ft. 0 In.
40	Nav Horizontal Clear	0 Ft. 0 In.	51	Curb to Curb Br. Width	30 Ft. 10 In.
111	Nav. Pier Protection		52	Deck Width (Out-Out)	35 Ft. 1 In.
116	Nav. Cl. Vert. Clear		53	Vert. Clearance Over Deck	99 Ft. 99 In.

Design_No = L0341



Missouri Department of Transportation
Bridge Inventory and Inspection System
Structural Inventory & Appraisal Sheet

December 2, 2024
1:56:41pm

COUNTY : POLK BRIDGE : L0341 REVIEW STATUS : APPROVED NBI STATUS : P
RECORD TYPE : ROUTE CARRIED 'ON' STRUCT RUN DATE : 1/26/2010 SUBMITTAL YEAR : 2009

LOAD RATING AND POSTING INFORMATION			MATERIAL/CONSTRUCTION INFORMATION		
31	Design Load	H 15	43A	Main Struc. Mat type	CONCRETE CONTINUOUS
41	Structure Status	A - OPEN NO RESTRICTIONS	43B	Main struc Constr. Type	CULVERT
63	Oper. Rating Meth.	NO RATING ANALYSIS PERFMD	45	# of Main Spans	2
64	Operating Rating	55 Tons.	44A	Appr Struc. Mat type	
65	Inventory Rating Meth	NO RATING ANALYSIS PERFMD	44B	Appr Struc. Cnstr. type	
66	Inventory Rating	19 Tons.	46	# of Approach Span	0
70	Bridge Posting Code	=>LEGAL LOADS	107	Deck Mat/Constr.	NA
PROPOSED IMPROVEMENT INFORMATION			108A	Wear Surf Mat/Constr.	NA
Sufficiency Rating 46.1 Percent			108B	Membrane Mat/Constr.	NA
Deficiency Rating NOT DEFICIENT			108C	Deck Protect Mat/Constr.	NA
Funding Eligibility			CONDITION RATING INFORMATION		
75A	Proposed Work		58	Deck Cond. Rating	N
75B	Work Done By		59	Superstructure Cond. Rating	N
76	New Struc Length	0 Ft. 0 In.	60	Substructure Cond. Rating	N
94	Struc Improve Cost	\$ 0,000	61	Channel /Channel Protection Cond. Rating	5
95	Roadway Improve Cost	\$ 0,000	62	Culvert Cond. Rating	5
96	Total Project Cost	\$ 0,000	INSPECTION INFORMATION		
97	Year of Cost Estimates	0	90	Gen. Insp Date	11 / 09
APPRAISAL RATING INFORMATION			91	Gen. Insp. Frequency	24 Months
36A	Br. Rail App. Rating	NOT APPLICABLE	92A	Frac. Critical Inspection	N Months
36B	Transition Rail App. Rating	NOT APPLICABLE	93A	Frac. Critical Insp. Date	
36C	Approach Rail App. Rating	NOT APPLICABLE	92B	Underwater Inspection	N Months
36D	Rail End Treat. App. Rating	NOT APPLICABLE	93B	Underwater Insp. Date	
67	Struc Eval App. Rating	4	92C	Special Inspection	N Months
68	Deck Geometry App. Rating	4	93C	Special Inspection Date	
69	Underclearance App. Rating	N	BORDER BRIDGE INFORMATION		
71	Waterway Adeq. App. Rating	6	98	Neighboring State Code	
72	Approach Road App. Rating	8	98B	Neighboring State % Respon	
113	Scour Assess App. Rating	8	99	Neighboring State Struc. No.	
APPROVED POSTING INFORMATION			FIELD POSTING INFORMATION		
Approved Posting Category S-1			Field Posting Category S-1		
Ton1 Ton2 Ton3			Ton1 Ton2 Ton3		
Tonnage Values for Posting Sign			Tonnage Values for Posting Sign		
General Text for Posting Sign			General Text for Posting Sign		
NO POSTING REQUIRED			NO POSTING REQUIRED		

Design_No = L0341



Missouri Department of Transportation
Bridge Inventory and Inspection System
Structural Inventory & Appraisal Sheet

December 2, 2024
1:56:41pm

COUNTY : POLK BRIDGE : L0341 REVIEW STATUS : APPROVED NBI STATUS : P
RECORD TYPE : ROUTE CARRIED 'ON' STRUCT RUN DATE : 1/16/2014 SUBMITTAL YEAR : 2013

GENERAL STRUCTURE INFORMATION			ROUTE DESIGNATION INFORMATION		
1	State	MISSOURI	5A	Record Type	ROUTE CARRIED 'ON' STRUCT
2	District	SW	5B	Route Signing Prefix	MO
3	County	POLK	5C	Designated Level of Service	MAINLINE
8	Federal ID No.	6215	5D	Route Number	00083
27	Year Built	1948	5E	Directional Suffix	NOT APPLICABLE
106	Year Reconstructed	0	7	Facility Carried	MO 83 S
42A	Type of Service On	HIGHWAY	12	Base Hwy. Network	NO
21	Structure Maintenance	STATE HIGHWAY AGENCY	13A	LRS Inventory Route No.	
22	Structure Owner	STATE HIGHWAY AGENCY	13B	Subroute No.	
33	Br. Median Code	NO MEDIAN	20	Toll Status	ON FREE ROAD
37	Historical Significance	NOT ELIGIBLE FOR NR OF HP	26	Functional Classification	07-RURAL MAJOR COLLECTOR
101	Parallel Struc Desg	NONE EXISTS	28A	Lanes on Structure	02
103	Temporary Structure	NOT TEMPORARY	100	STRAHNET Designation	RTE NOT A DEFENSE HWY
112	NBIS Bridge Length	YES	104	National Highway System	NOT ON NHS
			105	Federal Lands Highway	NOT APPLICABLE
			110	Designated Nat. Network	NO
STRUCTURE LOCATION INFORMATION			STRUCTURE TRAFFIC INFORMATION		
4	Place	POLK 90825	29	AADT	3220
	Code	90825	30	AADT Year	2013
9	Location	S 35 T 34 N R 23 W	102	Direction of Traffic	2-WAY TRAFFIC
11	Milepoint	52.68 miles	109	AADT Truck Percent	10%
16	Latitude	37 D 37 M 51 S	114	Future AADT	5152
17	Longitude	93 D 25 M 15 S	115	Future AADT Year	2034
UNDERRECORD INFORMATION			STRUCTURE GEOMETRIC INFORMATION		
6	Features Intersected	MILE CR	10	Inventory Rte. Vert. Clear	99 Ft. 99 In.
42B	Type of Service Under	WATERWAY	19	By pass Detour Length	14.26 miles
28B	Lanes Under Structure	00	32	Approach Roadway Width	25 Ft. 11 In.
54A	Vert. Clearance Ref.	N/A	34	Skew	45.00 Degrees
54B	Vert. Clearance	0 Ft. 0 In.	35	Struct. Flared	NO
55A	Rt. Lat Clear Ref.	N/A	47	Total Horiz. Clear	27 Ft. 11 In.
55B	Rt. Lat Clearance	0 Ft. 0 In.	48	Maximum Span Length	12 Ft. 2 In.
56	Left Lat Clearance	0 Ft. 0 In.	49	Structure Length	35 Ft. 5 In.
38	Navigation Control	PERMIT NOT REQ	50A	Left Curb/Sidewalk Width	0 Ft. 0 In.
39	Nav Vertical Clear	0 Ft. 0 In.	50B	Right Curb/Sidewalk Width	0 Ft. 0 In.
40	Nav Horizontal Clear	0 Ft. 0 In.	51	Curb to Curb Br. Width	30 Ft. 10 In.
111	Nav. Pier Protection		52	Deck Width (Out-Out)	35 Ft. 1 In.
116	Nav. Cl. Vert. Clear		53	Vert. Clearance Over Deck	99 Ft. 99 In.

Design_No = L0341



Missouri Department of Transportation
Bridge Inventory and Inspection System
Structural Inventory & Appraisal Sheet

December 2, 2024
1:56:41pm

COUNTY : POLK BRIDGE : L0341 REVIEW STATUS : APPROVED NBI STATUS : P
RECORD TYPE : ROUTE CARRIED 'ON' STRUCT RUN DATE : 1/16/2014 SUBMITTAL YEAR : 2013

LOAD RATING AND POSTING INFORMATION			MATERIAL/CONSTRUCTION INFORMATION		
31	Design Load	H 15	43A	Main Struc. Mat type	CONCRETE CONTINUOUS
41	Structure Status	A - OPEN NO RESTRICTIONS	43B	Main struc Constr. Type	CULVERT
63	Oper. Rating Meth.	NO RATING ANALYSIS PERFMD	45	# of Main Spans	2
64	Operating Rating	55 Tons.	44A	Appr Struc. Mat type	
65	Inventory Rating Meth	NO RATING ANALYSIS PERFMD	44B	Appr Struc. Cnstr. type	
66	Inventory Rating	19 Tons.	46	# of Approach Span	0
70	Bridge Posting Code	=>LEGAL LOADS	107	Deck Mat/Constr.	NA
PROPOSED IMPROVEMENT INFORMATION			108A	Wear Surf Mat/Constr.	NA
Sufficiency Rating 49.4 Percent			108B	Membrane Mat/Constr.	NA
Deficiency Rating NOT DEFICIENT			108C	Deck Protect Mat/Constr.	NA
Funding Eligibility			CONDITION RATING INFORMATION		
75A	Proposed Work		58	Deck Cond. Rating	N
75B	Work Done By		59	Superstructure Cond. Rating	N
76	New Struc Length	0 Ft. 0 In.	60	Substructure Cond. Rating	N
94	Struc Improve Cost	\$ 0,000	61	Channel /Channel Protection Cond. Rating	5
95	Roadway Improve Cost	\$ 0,000	62	Culvert Cond. Rating	5
96	Total Project Cost	\$ 0,000	INSPECTION INFORMATION		
97	Year of Cost Estimates	0	90	Gen. Insp Date	12 / 13
APPRAISAL RATING INFORMATION			91	Gen. Insp. Frequency	24 Months
36A	Br. Rail App. Rating	NOT APPLICABLE	92A	Frac. Critical Inspection	N Months
36B	Transition Rail App. Rating	NOT APPLICABLE	93A	Frac. Critical Insp. Date	
36C	Approach Rail App. Rating	NOT APPLICABLE	92B	Underwater Inspection	N Months
36D	Rail End Treat. App. Rating	NOT APPLICABLE	93B	Underwater Insp. Date	
67	Struc Eval App. Rating	4	92C	Special Inspection	N Months
68	Deck Geometry App. Rating	4	93C	Special Inspection Date	
69	Underclearance App. Rating	N	BORDER BRIDGE INFORMATION		
71	Waterway Adeq. App. Rating	6	98	Neighboring State Code	
72	Approach Road App. Rating	8	98B	Neighboring State % Respon	
113	Scour Assess App. Rating	8	99	Neighboring State Struc. No.	
APPROVED POSTING INFORMATION			FIELD POSTING INFORMATION		
Approved Posting Category S-1			Field Posting Category S-1		
Ton1 Ton2 Ton3			Ton1 Ton2 Ton3		
Tonnage Values for Posting Sign			Tonnage Values for Posting Sign		
General Text for Posting Sign			General Text for Posting Sign		
NO POSTING REQUIRED			NO POSTING REQUIRED		

Design_No = L0341



Missouri Department of Transportation
Bridge Inventory and Inspection System
Structural Inventory & Appraisal Sheet

December 2, 2024
1:56:41pm

COUNTY : POLK BRIDGE : L0341 REVIEW STATUS : APPROVED NBI STATUS : P
RECORD TYPE : ROUTE CARRIED 'ON' STRUCT RUN DATE : 2/11/2020 SUBMITTAL YEAR : 2019

GENERAL STRUCTURE INFORMATION			ROUTE DESIGNATION INFORMATION		
1	State	MISSOURI	5A	Record Type	ROUTE CARRIED 'ON' STRUCT
2	District	SW	5B	Route Signing Prefix	MO
3	County	POLK	5C	Designated Level of Service	MAINLINE
8	Federal ID No.	6215	5D	Route Number	00083
27	Year Built	1948	5E	Directional Suffix	NOT APPLICABLE
106	Year Reconstructed	0	7	Facility Carried	MO 83 S
42A	Type of Service On	HIGHWAY	12	Base Hwy. Network	NO
21	Structure Maintenance	STATE HIGHWAY AGENCY	13A	LRS Inventory Route No.	
22	Structure Owner	STATE HIGHWAY AGENCY	13B	Subroute No.	
33	Br. Median Code	NO MEDIAN	20	Toll Status	ON FREE ROAD
37	Historical Significance	NOT ELIGIBLE FOR NR OF HP	26	Functional Classification	07-RURAL MAJOR COLLECTOR
101	Parallel Struc Desg	NONE EXISTS	28A	Lanes on Structure	02
103	Temporary Structure	NOT TEMPORARY	100	STRAHNET Designation	RTE NOT A DEFENSE HWY
112	NBIS Bridge Length	YES	104	National Highway System	NOT ON NHS
			105	Federal Lands Highway	NOT APPLICABLE
			110	Designated Nat. Network	NO
STRUCTURE LOCATION INFORMATION			STRUCTURE TRAFFIC INFORMATION		
4	Place	POLK 90825	29	AADT	3788
	Code	90825	30	AADT Year	2018
9	Location	S 35 T 34 N R 23 W	102	Direction of Traffic	2-WAY TRAFFIC
11	Milepoint	52.69 miles	109	AADT Truck Percent	11%
16	Latitude	37 D 37 M 51 S	114	Future AADT	6060
17	Longitude	93 D 25 M 15 S	115	Future AADT Year	2038
UNDERRECORD INFORMATION			STRUCTURE GEOMETRIC INFORMATION		
6	Features Intersected	MILE CR	10	Inventory Rte. Vert. Clear	99 Ft. 99 In.
42B	Type of Service Under	WATERWAY	19	By pass Detour Length	14.26 miles
28B	Lanes Under Structure	00	32	Approach Roadway Width	25 Ft. 11 In.
54A	Vert. Clearance Ref.	N/A	34	Skew	45.00 Degrees
54B	Vert. Clearance	0 Ft. 0 In.	35	Struct. Flared	NO
55A	Rt. Lat Clear Ref.	N/A	47	Total Horiz. Clear	27 Ft. 11 In.
55B	Rt. Lat Clearance	0 Ft. 0 In.	48	Maximum Span Length	12 Ft. 2 In.
56	Left Lat Clearance	0 Ft. 0 In.	49	Structure Length	35 Ft. 5 In.
38	Navigation Control	PERMIT NOT REQ	50A	Left Curb/Sidewalk Width	0 Ft. 0 In.
39	Nav Vertical Clear	0 Ft. 0 In.	50B	Right Curb/Sidewalk Width	0 Ft. 0 In.
40	Nav Horizontal Clear	0 Ft. 0 In.	51	Curb to Curb Br. Width	30 Ft. 10 In.
111	Nav. Pier Protection		52	Deck Width (Out-Out)	35 Ft. 1 In.
116	Nav. Cl. Vert. Clear		53	Vert. Clearance Over Deck	99 Ft. 99 In.

Design_No = L0341



Missouri Department of Transportation
Bridge Inventory and Inspection System
Structural Inventory & Appraisal Sheet

December 2, 2024
1:56:41pm

COUNTY : POLK BRIDGE : L0341 REVIEW STATUS : APPROVED NBI STATUS : P
RECORD TYPE : ROUTE CARRIED 'ON' STRUCT RUN DATE : 2/11/2020 SUBMITTAL YEAR : 2019

LOAD RATING AND POSTING INFORMATION			MATERIAL/CONSTRUCTION INFORMATION		
31	Design Load	H 15	43A	Main Struc. Mat type	CONCRETE CONTINUOUS
41	Structure Status	A - OPEN NO RESTRICTIONS	43B	Main struc Constr. Type	CULVERT
63	Oper. Rating Meth.	LOAD FACTOR	45	# of Main Spans	2
64	Operating Rating	63 Tons.	44A	Appr Struc. Mat type	
65	Inventory Rating Meth	LOAD FACTOR	44B	Appr Struc. Cnstr. type	
66	Inventory Rating	38 Tons.	46	# of Approach Span	0
70	Bridge Posting Code	=>LEGAL LOADS	107	Deck Mat/Constr.	NA
			108A	Wear Surf Mat/Constr.	NA
			108B	Membrane Mat/Constr.	NA
			108C	Deck Protect Mat/Constr.	NA
PROPOSED IMPROVEMENT INFORMATION			CONDITION RATING INFORMATION		
Sufficiency Rating 68.4 Percent			58	Deck Cond. Rating	N
Deficiency Rating NOT DEFICIENT			59	Superstructure Cond. Rating	N
Funding Eligibility			60	Substructure Cond. Rating	N
75A	Proposed Work		61	Channel /Channel Protection Cond. Rating	4
75B	Work Done By		62	Culvert Cond. Rating	5
76	New Struc Length	0 Ft. 0 In.			
94	Struc Improve Cost	\$ 0,000	INSPECTION INFORMATION		
95	Roadway Improve Cost	\$ 0,000	90	Gen. Insp Date	11 / 19
96	Total Project Cost	\$ 0,000	91	Gen. Insp. Frequency	24 Months
97	Year of Cost Estimates	0	92A	Frac. Critical Inspection	N Months
			93A	Frac. Critical Insp. Date	
			92B	Underwater Inspection	N Months
			93B	Underwater Insp. Date	
			92C	Special Inspection	N Months
			93C	Special Inspection Date	
APPRAISAL RATING INFORMATION			BORDER BRIDGE INFORMATION		
36A	Br. Rail App. Rating	DOES NOT MEET ACCEPT STND	98	Neighboring State Code	
36B	Transition Rail App. Rating	DOES NOT MEET ACCEPT STND	98B	Neighboring State % Respon	
36C	Approach Rail App. Rating	DOES NOT MEET ACCEPT STND	99	Neighboring State Struc. No.	
36D	Rail End Treat. App. Rating	DOES NOT MEET ACCEPT STND			
67	Struc Eval App. Rating	5	FIELD POSTING INFORMATION		
68	Deck Geometry App. Rating	4	Field Posting Category S-1		
69	Underclearance App. Rating	N	Ton1 Ton2 Ton3		
71	Waterway Adeq. App. Rating	6	Tonnage Values for Posting Sign		
72	Approach Road App. Rating	8	General Text for Posting Sign		
113	Scour Assess App. Rating	4	NO POSTING REQUIRED		
APPROVED POSTING INFORMATION					
Approved Posting Category S-1			Field Posting Category S-1		
Ton1 Ton2 Ton3			Ton1 Ton2 Ton3		
Tonnage Values for Posting Sign			Tonnage Values for Posting Sign		
General Text for Posting Sign			General Text for Posting Sign		
NO POSTING REQUIRED			NO POSTING REQUIRED		

Design_No = L0341



Missouri Department of Transportation
Bridge Inventory and Inspection System
Structural Inventory & Appraisal Sheet

December 2, 2024
1:56:41pm

COUNTY : POLK BRIDGE : L0341 REVIEW STATUS : APPROVED NBI STATUS : P
RECORD TYPE : ROUTE CARRIED 'ON' STRUCT RUN DATE : 1/21/2021 SUBMITTAL YEAR : 2020

GENERAL STRUCTURE INFORMATION			ROUTE DESIGNATION INFORMATION		
1	State	MISSOURI	5A	Record Type	ROUTE CARRIED 'ON' STRUCT
2	District	SW	5B	Route Signing Prefix	MO
3	County	POLK	5C	Designated Level of Service	MAINLINE
8	Federal ID No.	6215	5D	Route Number	00083
27	Year Built	1948	5E	Directional Suffix	NOT APPLICABLE
106	Year Reconstructed	0	7	Facility Carried	MO 83 S
42A	Type of Service On	HIGHWAY	12	Base Hwy. Network	NO
21	Structure Maintenance	STATE HIGHWAY AGENCY	13A	LRS Inventory Route No.	
22	Structure Owner	STATE HIGHWAY AGENCY	13B	Subroute No.	
33	Br. Median Code	NO MEDIAN	20	Toll Status	ON FREE ROAD
37	Historical Significance	NOT ELIGIBLE FOR NR OF HP	26	Functional Classification	07-RURAL MAJOR COLLECTOR
101	Parallel Struc Desg	NONE EXISTS	28A	Lanes on Structure	02
103	Temporary Structure	NOT TEMPORARY	100	STRAHNET Designation	RTE NOT A DEFENSE HWY
112	NBIS Bridge Length	YES	104	National Highway System	NOT ON NHS
			105	Federal Lands Highway	NOT APPLICABLE
			110	Designated Nat. Network	NO
STRUCTURE LOCATION INFORMATION			STRUCTURE TRAFFIC INFORMATION		
4	Place	POLK 90825	29	AADT	3624
	Code	90825	30	AADT Year	2019
9	Location	S 35 T 34 N R 23 W	102	Direction of Traffic	2-WAY TRAFFIC
11	Milepoint	52.69 miles	109	AADT Truck Percent	6%
16	Latitude	37 D 37 M 51 S	114	Future AADT	5798
17	Longitude	93 D 25 M 15 S	115	Future AADT Year	2039
UNDERRECORD INFORMATION			STRUCTURE GEOMETRIC INFORMATION		
6	Features Intersected	MILE CR	10	Inventory Rte. Vert. Clear	99 Ft. 99 In.
42B	Type of Service Under	WATERWAY	19	By pass Detour Length	14.26 miles
28B	Lanes Under Structure	00	32	Approach Roadway Width	25 Ft. 11 In.
54A	Vert. Clearance Ref.	N/A	34	Skew	45.00 Degrees
54B	Vert. Clearance	0 Ft. 0 In.	35	Struct. Flared	NO
55A	Rt. Lat Clear Ref.	N/A	47	Total Horiz. Clear	27 Ft. 11 In.
55B	Rt. Lat Clearance	0 Ft. 0 In.	48	Maximum Span Length	12 Ft. 2 In.
56	Left Lat Clearance	0 Ft. 0 In.	49	Structure Length	35 Ft. 5 In.
38	Navigation Control	PERMIT NOT REQ	50A	Left Curb/Sidewalk Width	0 Ft. 0 In.
39	Nav Vertical Clear	0 Ft. 0 In.	50B	Right Curb/Sidewalk Width	0 Ft. 0 In.
40	Nav Horizontal Clear	0 Ft. 0 In.	51	Curb to Curb Br. Width	30 Ft. 10 In.
111	Nav. Pier Protection		52	Deck Width (Out-Out)	35 Ft. 1 In.
116	Nav. Cl. Vert. Clear		53	Vert. Clearance Over Deck	99 Ft. 99 In.

Design_No = L0341



Missouri Department of Transportation
Bridge Inventory and Inspection System
Structural Inventory & Appraisal Sheet

December 2, 2024
1:56:41pm

COUNTY : POLK BRIDGE : L0341 REVIEW STATUS : APPROVED NBI STATUS : P
RECORD TYPE : ROUTE CARRIED 'ON' STRUCT RUN DATE : 1/21/2021 SUBMITTAL YEAR : 2020

LOAD RATING AND POSTING INFORMATION			MATERIAL/CONSTRUCTION INFORMATION		
31	Design Load	H 15	43A	Main Struc. Mat type	CONCRETE CONTINUOUS
41	Structure Status	A - OPEN NO RESTRICTIONS	43B	Main struc Constr. Type	CULVERT
63	Oper. Rating Meth.	LOAD FACTOR	45	# of Main Spans	2
64	Operating Rating	63 Tons.	44A	Appr Struc. Mat type	
65	Inventory Rating Meth	LOAD FACTOR	44B	Appr Struc. Cnstr. type	
66	Inventory Rating	38 Tons.	46	# of Approach Span	0
70	Bridge Posting Code	=>LEGAL LOADS	107	Deck Mat/Constr.	NA
PROPOSED IMPROVEMENT INFORMATION			108A	Wear Surf Mat/Constr.	NA
Sufficiency Rating 68.6 Percent			108B	Membrane Mat/Constr.	NA
Deficiency Rating NOT DEFICIENT			108C	Deck Protect Mat/Constr.	NA
Funding Eligibility			CONDITION RATING INFORMATION		
75A	Proposed Work		58	Deck Cond. Rating	N
75B	Work Done By		59	Superstructure Cond. Rating	N
76	New Struc Length	0 Ft. 0 In.	60	Substructure Cond. Rating	N
94	Struc Improve Cost	\$ 0,000	61	Channel /Channel Protection Cond. Rating	4
95	Roadway Improve Cost	\$ 0,000	62	Culvert Cond. Rating	5
96	Total Project Cost	\$ 0,000	INSPECTION INFORMATION		
97	Year of Cost Estimates	0	90	Gen. Insp Date	11 / 19
APPRAISAL RATING INFORMATION			91	Gen. Insp. Frequency	24 Months
36A	Br. Rail App. Rating	DOES NOT MEET ACCEPT STND	92A	Frac. Critical Inspection	N Months
36B	Transition Rail App. Rating	DOES NOT MEET ACCEPT STND	93A	Frac. Critical Insp. Date	
36C	Approach Rail App. Rating	DOES NOT MEET ACCEPT STND	92B	Underwater Inspection	N Months
36D	Rail End Treat. App. Rating	DOES NOT MEET ACCEPT STND	93B	Underwater Insp. Date	
67	Struc Eval App. Rating	5	92C	Special Inspection	N Months
68	Deck Geometry App. Rating	4	93C	Special Inspection Date	
69	Underclearance App. Rating	N	BORDER BRIDGE INFORMATION		
71	Waterway Adeq. App. Rating	6	98	Neighboring State Code	
72	Approach Road App. Rating	8	98B	Neighboring State % Respon	
113	Scour Assess App. Rating	4	99	Neighboring State Struc. No.	
APPROVED POSTING INFORMATION			FIELD POSTING INFORMATION		
Approved Posting Category S-1			Field Posting Category S-1		
Ton1 Ton2 Ton3			Ton1 Ton2 Ton3		
Tonnage Values for Posting Sign			Tonnage Values for Posting Sign		
General Text for Posting Sign			General Text for Posting Sign		
NO POSTING REQUIRED			NO POSTING REQUIRED		

Design_No = L0341



Missouri Department of Transportation
Bridge Inventory and Inspection System
Structural Inventory & Appraisal Sheet

December 2, 2024
1:56:41pm

COUNTY : POLK BRIDGE : L0341 REVIEW STATUS : APPROVED NBI STATUS : P
RECORD TYPE : ROUTE CARRIED 'ON' STRUCT RUN DATE : 3/2/2023 SUBMITTAL YEAR : 2022

GENERAL STRUCTURE INFORMATION			ROUTE DESIGNATION INFORMATION		
1	State	MISSOURI	5A	Record Type	ROUTE CARRIED 'ON' STRUCT
2	District	SW	5B	Route Signing Prefix	MO
3	County	POLK	5C	Designated Level of Service	MAINLINE
8	Federal ID No.	6215	5D	Route Number	00083
27	Year Built	1948	5E	Directional Suffix	NOT APPLICABLE
106	Year Reconstructed	0	7	Facility Carried	MO 83 S
42A	Type of Service On	HIGHWAY	12	Base Hwy. Network	NO
21	Structure Maintenance	STATE HIGHWAY AGENCY	13A	LRS Inventory Route No.	
22	Structure Owner	STATE HIGHWAY AGENCY	13B	Subroute No.	
33	Br. Median Code	NO MEDIAN	20	Toll Status	ON FREE ROAD
37	Historical Significance	NOT ELIGIBLE FOR NR OF HP	26	Functional Classification	07-RURAL MAJOR COLLECTOR
101	Parallel Struc Desg	NONE EXISTS	28A	Lanes on Structure	02
103	Temporary Structure	NOT TEMPORARY	100	STRAHNET Designation	RTE NOT A DEFENSE HWY
112	NBIS Bridge Length	YES	104	National Highway System	NOT ON NHS
			105	Federal Lands Highway	NOT APPLICABLE
			110	Designated Nat. Network	NO
STRUCTURE LOCATION INFORMATION			STRUCTURE TRAFFIC INFORMATION		
4	Place	POLK 90825	29	AADT	4049
	Code	90825	30	AADT Year	2022
9	Location	S 35 T 34 N R 23 W	102	Direction of Traffic	2-WAY TRAFFIC
11	Milepoint	52.69 miles	109	AADT Truck Percent	6%
16	Latitude	37 D 37 M 51 S	114	Future AADT	6478
17	Longitude	93 D 25 M 15 S	115	Future AADT Year	2042
UNDERRECORD INFORMATION			STRUCTURE GEOMETRIC INFORMATION		
6	Features Intersected	MILE CR	10	Inventory Rte. Vert. Clear	99 Ft. 99 In.
42B	Type of Service Under	WATERWAY	19	By pass Detour Length	14.26 miles
28B	Lanes Under Structure	00	32	Approach Roadway Width	25 Ft. 11 In.
54A	Vert. Clearance Ref.	N/A	34	Skew	45.00 Degrees
54B	Vert. Clearance	0 Ft. 0 In.	35	Struct. Flared	NO
55A	Rt. Lat Clear Ref.	N/A	47	Total Horiz. Clear	27 Ft. 11 In.
55B	Rt. Lat Clearance	0 Ft. 0 In.	48	Maximum Span Length	12 Ft. 2 In.
56	Left Lat Clearance	0 Ft. 0 In.	49	Structure Length	35 Ft. 5 In.
38	Navigation Control	PERMIT NOT REQ	50A	Left Curb/Sidewalk Width	0 Ft. 0 In.
39	Nav Vertical Clear	0 Ft. 0 In.	50B	Right Curb/Sidewalk Width	0 Ft. 0 In.
40	Nav Horizontal Clear	0 Ft. 0 In.	51	Curb to Curb Br. Width	30 Ft. 10 In.
111	Nav. Pier Protection		52	Deck Width (Out-Out)	35 Ft. 1 In.
116	Nav. Cl. Vert. Clear		53	Vert. Clearance Over Deck	99 Ft. 99 In.

Design_No = L0341



Missouri Department of Transportation
Bridge Inventory and Inspection System
Structural Inventory & Appraisal Sheet

December 2, 2024
1:56:41pm

COUNTY : POLK BRIDGE : L0341 REVIEW STATUS : APPROVED NBI STATUS : P
RECORD TYPE : ROUTE CARRIED 'ON' STRUCT RUN DATE : 3/2/2023 SUBMITTAL YEAR : 2022

LOAD RATING AND POSTING INFORMATION			MATERIAL/CONSTRUCTION INFORMATION		
31	Design Load	H 15	43A	Main Struc. Mat type	CONCRETE CONTINUOUS
41	Structure Status	A - OPEN NO RESTRICTIONS	43B	Main struc Constr. Type	CULVERT
63	Oper. Rating Meth.	LOAD FACTOR	45	# of Main Spans	2
64	Operating Rating	63 Tons.	44A	Appr Struc. Mat type	
65	Inventory Rating Meth	LOAD FACTOR	44B	Appr Struc. Cnstr. type	
66	Inventory Rating	38 Tons.	46	# of Approach Span	0
70	Bridge Posting Code	=>LEGAL LOADS	107	Deck Mat/Constr.	NA
PROPOSED IMPROVEMENT INFORMATION			108A	Wear Surf Mat/Constr.	NA
Sufficiency Rating 68.0 Percent			108B	Membrane Mat/Constr.	NA
Deficiency Rating NOT DEFICIENT			108C	Deck Protect Mat/Constr.	NA
Funding Eligibility			CONDITION RATING INFORMATION		
75A	Proposed Work		58	Deck Cond. Rating	N
75B	Work Done By		59	Superstructure Cond. Rating	N
76	New Struc Length	0 Ft. 0 In.	60	Substructure Cond. Rating	N
94	Struc Improve Cost	\$ 0,000	61	Channel /Channel Protection Cond. Rating	4
95	Roadway Improve Cost	\$ 0,000	62	Culvert Cond. Rating	5
96	Total Project Cost	\$ 0,000	INSPECTION INFORMATION		
97	Year of Cost Estimates	0	90	Gen. Insp Date	11 / 21
APPRAISAL RATING INFORMATION			91	Gen. Insp. Frequency	24 Months
36A	Br. Rail App. Rating	DOES NOT MEET ACCEPT STND	92A	Frac. Critical Inspection	N Months
36B	Transition Rail App. Rating	DOES NOT MEET ACCEPT STND	93A	Frac. Critical Insp. Date	
36C	Approach Rail App. Rating	DOES NOT MEET ACCEPT STND	92B	Underwater Inspection	N Months
36D	Rail End Treat. App. Rating	DOES NOT MEET ACCEPT STND	93B	Underwater Insp. Date	
67	Struc Eval App. Rating	5	92C	Special Inspection	N Months
68	Deck Geometry App. Rating	4	93C	Special Inspection Date	
69	Underclearance App. Rating	N	BORDER BRIDGE INFORMATION		
71	Waterway Adeq. App. Rating	6	98	Neighboring State Code	
72	Approach Road App. Rating	8	98B	Neighboring State % Respon	
113	Scour Assess App. Rating	4	99	Neighboring State Struc. No.	
APPROVED POSTING INFORMATION			FIELD POSTING INFORMATION		
Approved Posting Category S-1			Field Posting Category S-1		
Ton1 Ton2 Ton3			Ton1 Ton2 Ton3		
Tonnage Values for Posting Sign			Tonnage Values for Posting Sign		
General Text for Posting Sign			General Text for Posting Sign		
NO POSTING REQUIRED			NO POSTING REQUIRED		

Design_No = L0341



Missouri Department of Transportation
Bridge Inventory and Inspection System
Structural Inventory & Appraisal Sheet

December 2, 2024
1:56:41pm

COUNTY : POLK BRIDGE : L0341 REVIEW STATUS : APPROVED NBI STATUS : P
RECORD TYPE : ROUTE CARRIED 'ON' STRUCT RUN DATE : 2/16/2007 SUBMITTAL YEAR : 2006

GENERAL STRUCTURE INFORMATION

1	State	MISSOURI
2	District	SW
3	County	POLK
8	Federal ID No.	6215
27	Year Built	1948
106	Year Reconstructed	0
42A	Type of Service On	HIGHWAY
21	Structure Maintenance	STATE HIGHWAY AGENCY
22	Structure Owner	STATE HIGHWAY AGENCY
33	Br. Median Code	NO MEDIAN
37	Historical Significance	NOT ELIGIBLE FOR NR OF HP
101	Parallel Struc Desg	NONE EXISTS
103	Temporary Structure	NOT TEMPORARY
112	NBIS Bridge Length	YES

ROUTE DESIGNATION INFORMATION

5A	Record Type	ROUTE CARRIED 'ON' STRUCT
5B	Route Signing Prefix	MO
5C	Designated Level of Service	MAINLINE
5D	Route Number	00083
5E	Directional Suffix	NOT APPLICABLE
7	Facility Carried	MO 83 S
12	Base Hwy. Network	NO
13A	LRS Inventory Route No.	
13B	Subroute No.	
20	Toll Status	ON FREE ROAD
26	Functional Classification	07-RURAL MAJOR COLLECTOR
28A	Lanes on Structure	02
100	STRAHNET Designation	RTE NOT A DEFENSE HWY
104	National Highway System	NOT ON NHS
105	Federal Lands Highway	NOT APPLICABLE
110	Designated Nat. Network	NO

STRUCTURE LOCATION INFORMATION

4	Place	POLK 90825
	Code	90825
9	Location	S 35 T 34 N R 23 W
11	Milepoint	52.69 miles
16	Latitude	37 D 37 M 54 S
17	Longitude	93 D 25 M 12 S

STRUCTURE TRAFFIC INFORMATION

29	AADT	4700
30	AADT Year	2005
102	Direction of Traffic	2-WAY TRAFFIC
109	AADT Truck Percent	11%
114	Future AADT	7520
115	Future AADT Year	2027

UNDERRECORD INFORMATION

6	Features Intersected	MILE CR
42B	Type of Service Under	WATERWAY
28B	Lanes Under Structure	00
54A	Vert. Clearance Ref.	N/A
54B	Vert. Clearance	0 Ft. 0 In.
55A	Rt. Lat Clear Ref.	N/A
55B	Rt. Lat Clearance	0 Ft. 0 In.
56	Left Lat Clearance	0 Ft. 0 In.
38	Navigation Control	PERMIT NOT REQ
39	Nav Vertical Clear	0 Ft. 0 In.
40	Nav Horizontal Clear	0 Ft. 0 In.
111	Nav. Pier Protection	
116	Nav. Cl. Vert. Clear	

STRUCTURE GEOMETRIC INFORMATION

10	Inventory Rte. Vert. Clear	99 Ft. 99 In.
19	By pass Detour Length	14.26 miles
32	Approach Roadway Width	25 Ft. 11 In.
34	Skew	45.00 Degrees
35	Struct. Flared	NO
47	Total Horiz. Clear	27 Ft. 11 In.
48	Maximum Span Length	12 Ft. 2 In.
49	Structure Length	35 Ft. 5 In.
50A	Left Curb/Sidewalk Width	0 Ft. 0 In.
50B	Right Curb/Sidewalk Width	0 Ft. 0 In.
51	Curb to Curb Br. Width	30 Ft. 10 In.
52	Deck Width (Out-Out)	35 Ft. 1 In.
53	Vert. Clearance Over Deck	99 Ft. 99 In.

Design_No = L0341



Missouri Department of Transportation
Bridge Inventory and Inspection System
Structural Inventory & Appraisal Sheet

December 2, 2024
1:56:41pm

COUNTY : POLK BRIDGE : L0341 REVIEW STATUS : APPROVED NBI STATUS : P
RECORD TYPE : ROUTE CARRIED 'ON' STRUCT RUN DATE : 2/16/2007 SUBMITTAL YEAR : 2006

LOAD RATING AND POSTING INFORMATION			MATERIAL/CONSTRUCTION INFORMATION		
31	Design Load	H 15	43A	Main Struc. Mat type	CONCRETE CONTINUOUS
41	Structure Status	A - OPEN NO RESTRICTIONS	43B	Main struc Constr. Type	CULVERT
63	Oper. Rating Meth.	NO RATING ANALYSIS PERFM	45	# of Main Spans	2
64	Operating Rating	55 Tons.	44A	Appr Struc. Mat type	
65	Inventory Rating Meth	NO RATING ANALYSIS PERFM	44B	Appr Struc. Cnstr. type	
66	Inventory Rating	19 Tons.	46	# of Approach Span	0
70	Bridge Posting Code	=>LEGAL LOADS	107	Deck Mat/Constr.	NA
PROPOSED IMPROVEMENT INFORMATION			108A	Wear Surf Mat/Constr.	NA
Sufficiency Rating 46.2 Percent			108B	Membrane Mat/Constr.	NA
Deficiency Rating NOT DEFICIENT			108C	Deck Protect Mat/Constr.	NA
Funding Eligibility			CONDITION RATING INFORMATION		
75A	Proposed Work		58	Deck Cond. Rating	N
75B	Work Done By		59	Superstructure Cond. Rating	N
76	New Struc Length	0 Ft. 0 In.	60	Substructure Cond. Rating	N
94	Struc Improve Cost	\$ 0,000	61	Channel /Channel Protection Cond. Rating	5
95	Roadway Improve Cost	\$ 0,000	62	Culvert Cond. Rating	5
96	Total Project Cost	\$ 0,000	INSPECTION INFORMATION		
97	Year of Cost Estimates	0	90	Gen. Insp Date	11 / 05
APPRAISAL RATING INFORMATION			91	Gen. Insp. Frequency	24 Months
36A	Br. Rail App. Rating	MEETS ACCEPTBLE STND	92A	Frac. Critical Inspection	N Months
36B	Transition Rail App. Rating	MEETS ACCEPTBLE STND	93A	Frac. Critical Insp. Date	
36C	Approach Rail App. Rating	MEETS ACCEPTBLE STND	92B	Underwater Inspection	N Months
36D	Rail End Treat. App. Rating	MEETS ACCEPTBLE STND	93B	Underwater Insp. Date	
67	Struc Eval App. Rating	4	92C	Special Inspection	N Months
68	Deck Geometry App. Rating	4	93C	Special Inspection Date	
69	Underclearance App. Rating	N	BORDER BRIDGE INFORMATION		
71	Waterway Adeq. App. Rating	6	98	Neighboring State Code	
72	Approach Road App. Rating	8	98B	Neighboring State % Respon	
113	Scour Assess App. Rating	8	99	Neighboring State Struc. No.	
APPROVED POSTING INFORMATION			FIELD POSTING INFORMATION		
Approved Posting Category S-1			Field Posting Category S-1		
Ton1 Ton2 Ton3			Ton1 Ton2 Ton3		
Tonnage Values for Posting Sign			Tonnage Values for Posting Sign		
General Text for Posting Sign			General Text for Posting Sign		
NO POSTING REQUIRED			NO POSTING REQUIRED		

Design_No = L0341



Missouri Department of Transportation
Bridge Inventory and Inspection System
Structural Inventory & Appraisal Sheet

December 2, 2024
1:56:41pm

COUNTY : POLK BRIDGE : L0341 REVIEW STATUS : APPROVED NBI STATUS : P
RECORD TYPE : ROUTE CARRIED 'ON' STRUCT RUN DATE : 2/18/2009 SUBMITTAL YEAR : 2008

GENERAL STRUCTURE INFORMATION			ROUTE DESIGNATION INFORMATION		
1	State	MISSOURI	5A	Record Type	ROUTE CARRIED 'ON' STRUCT
2	District	SW	5B	Route Signing Prefix	MO
3	County	POLK	5C	Designated Level of Service	MAINLINE
8	Federal ID No.	6215	5D	Route Number	00083
27	Year Built	1948	5E	Directional Suffix	NOT APPLICABLE
106	Year Reconstructed	0	7	Facility Carried	MO 83 S
42A	Type of Service On	HIGHWAY	12	Base Hwy. Network	NO
21	Structure Maintenance	STATE HIGHWAY AGENCY	13A	LRS Inventory Route No.	
22	Structure Owner	STATE HIGHWAY AGENCY	13B	Subroute No.	
33	Br. Median Code	NO MEDIAN	20	Toll Status	ON FREE ROAD
37	Historical Significance	NOT ELIGIBLE FOR NR OF HP	26	Functional Classification	07-RURAL MAJOR COLLECTOR
101	Parallel Struc Desg	NONE EXISTS	28A	Lanes on Structure	02
103	Temporary Structure	NOT TEMPORARY	100	STRAHNET Designation	RTE NOT A DEFENSE HWY
112	NBIS Bridge Length	YES	104	National Highway System	NOT ON NHS
			105	Federal Lands Highway	NOT APPLICABLE
			110	Designated Nat. Network	NO
STRUCTURE LOCATION INFORMATION			STRUCTURE TRAFFIC INFORMATION		
4	Place	POLK 90825	29	AADT	4703
	Code	90825	30	AADT Year	2008
9	Location	S 35 T 34 N R 23 W	102	Direction of Traffic	2-WAY TRAFFIC
11	Milepoint	52.69 miles	109	AADT Truck Percent	10%
16	Latitude	37 D 37 M 54 S	114	Future AADT	7524
17	Longitude	93 D 25 M 12 S	115	Future AADT Year	2029
UNDERRECORD INFORMATION			STRUCTURE GEOMETRIC INFORMATION		
6	Features Intersected	MILE CR	10	Inventory Rte. Vert. Clear	99 Ft. 99 In.
42B	Type of Service Under	WATERWAY	19	By pass Detour Length	14.26 miles
28B	Lanes Under Structure	00	32	Approach Roadway Width	25 Ft. 11 In.
54A	Vert. Clearance Ref.	N/A	34	Skew	45.00 Degrees
54B	Vert. Clearance	0 Ft. 0 In.	35	Struct. Flared	NO
55A	Rt. Lat Clear Ref.	N/A	47	Total Horiz. Clear	27 Ft. 11 In.
55B	Rt. Lat Clearance	0 Ft. 0 In.	48	Maximum Span Length	12 Ft. 2 In.
56	Left Lat Clearance	0 Ft. 0 In.	49	Structure Length	35 Ft. 5 In.
38	Navigation Control	PERMIT NOT REQ	50A	Left Curb/Sidewalk Width	0 Ft. 0 In.
39	Nav Vertical Clear	0 Ft. 0 In.	50B	Right Curb/Sidewalk Width	0 Ft. 0 In.
40	Nav Horizontal Clear	0 Ft. 0 In.	51	Curb to Curb Br. Width	30 Ft. 10 In.
111	Nav. Pier Protection		52	Deck Width (Out-Out)	35 Ft. 1 In.
116	Nav. Cl. Vert. Clear		53	Vert. Clearance Over Deck	99 Ft. 99 In.

Design_No = L0341



Missouri Department of Transportation
Bridge Inventory and Inspection System
Structural Inventory & Appraisal Sheet

December 2, 2024
1:56:41pm

COUNTY : POLK BRIDGE : L0341 REVIEW STATUS : APPROVED NBI STATUS : P
RECORD TYPE : ROUTE CARRIED 'ON' STRUCT RUN DATE : 2/18/2009 SUBMITTAL YEAR : 2008

LOAD RATING AND POSTING INFORMATION			MATERIAL/CONSTRUCTION INFORMATION		
31	Design Load	H 15	43A	Main Struc. Mat type	CONCRETE CONTINUOUS
41	Structure Status	A - OPEN NO RESTRICTIONS	43B	Main struc Constr. Type	CULVERT
63	Oper. Rating Meth.	NO RATING ANALYSIS PERFMD	45	# of Main Spans	2
64	Operating Rating	55 Tons.	44A	Appr Struc. Mat type	
65	Inventory Rating Meth	NO RATING ANALYSIS PERFMD	44B	Appr Struc. Cnstr. type	
66	Inventory Rating	19 Tons.	46	# of Approach Span	0
70	Bridge Posting Code	=>LEGAL LOADS	107	Deck Mat/Constr.	NA
PROPOSED IMPROVEMENT INFORMATION			108A	Wear Surf Mat/Constr.	NA
Sufficiency Rating 46.1 Percent			108B	Membrane Mat/Constr.	NA
Deficiency Rating NOT DEFICIENT			108C	Deck Protect Mat/Constr.	NA
Funding Eligibility			CONDITION RATING INFORMATION		
75A	Proposed Work		58	Deck Cond. Rating	N
75B	Work Done By		59	Superstructure Cond. Rating	N
76	New Struc Length	0 Ft. 0 In.	60	Substructure Cond. Rating	N
94	Struc Improve Cost	\$ 0,000	61	Channel /Channel Protection Cond. Rating	5
95	Roadway Improve Cost	\$ 0,000	62	Culvert Cond. Rating	5
96	Total Project Cost	\$ 0,000	INSPECTION INFORMATION		
97	Year of Cost Estimates	0	90	Gen. Insp Date	11 / 07
APPRAISAL RATING INFORMATION			91	Gen. Insp. Frequency	24 Months
36A	Br. Rail App. Rating	MEETS ACCEPTBLE STND	92A	Frac. Critical Inspection	N Months
36B	Transition Rail App. Rating	MEETS ACCEPTBLE STND	93A	Frac. Critical Insp. Date	
36C	Approach Rail App. Rating	MEETS ACCEPTBLE STND	92B	Underwater Inspection	N Months
36D	Rail End Treat. App. Rating	MEETS ACCEPTBLE STND	93B	Underwater Insp. Date	
67	Struc Eval App. Rating	4	92C	Special Inspection	N Months
68	Deck Geometry App. Rating	4	93C	Special Inspection Date	
69	Underclearance App. Rating	N	BORDER BRIDGE INFORMATION		
71	Waterway Adeq. App. Rating	6	98	Neighboring State Code	
72	Approach Road App. Rating	8	98B	Neighboring State % Respon	
113	Scour Assess App. Rating	8	99	Neighboring State Struc. No.	
APPROVED POSTING INFORMATION			FIELD POSTING INFORMATION		
Approved Posting Category S-1			Field Posting Category S-1		
Ton1 Ton2 Ton3			Ton1 Ton2 Ton3		
Tonnage Values for Posting Sign			Tonnage Values for Posting Sign		
General Text for Posting Sign			General Text for Posting Sign		
NO POSTING REQUIRED			NO POSTING REQUIRED		

Design_No = L0341



Missouri Department of Transportation
Bridge Inventory and Inspection System
Structural Inventory & Appraisal Sheet

December 2, 2024
1:56:41pm

COUNTY : POLK BRIDGE : L0341 REVIEW STATUS : APPROVED NBI STATUS : P
RECORD TYPE : ROUTE CARRIED 'ON' STRUCT RUN DATE : 1/19/2011 SUBMITTAL YEAR : 2010

GENERAL STRUCTURE INFORMATION

1	State	MISSOURI
2	District	SW
3	County	POLK
8	Federal ID No.	6215
27	Year Built	1948
106	Year Reconstructed	0
42A	Type of Service On	HIGHWAY
21	Structure Maintenance	STATE HIGHWAY AGENCY
22	Structure Owner	STATE HIGHWAY AGENCY
33	Br. Median Code	NO MEDIAN
37	Historical Significance	NOT ELIGIBLE FOR NR OF HP
101	Parallel Struc Desg	NONE EXISTS
103	Temporary Structure	NOT TEMPORARY
112	NBIS Bridge Length	YES

ROUTE DESIGNATION INFORMATION

5A	Record Type	ROUTE CARRIED 'ON' STRUCT
5B	Route Signing Prefix	MO
5C	Designated Level of Service	MAINLINE
5D	Route Number	00083
5E	Directional Suffix	NOT APPLICABLE
7	Facility Carried	MO 83 S
12	Base Hwy. Network	NO
13A	LRS Inventory Route No.	
13B	Subroute No.	
20	Toll Status	ON FREE ROAD
26	Functional Classification	07-RURAL MAJOR COLLECTOR
28A	Lanes on Structure	02
100	STRAHNET Designation	RTE NOT A DEFENSE HWY
104	National Highway System	NOT ON NHS
105	Federal Lands Highway	NOT APPLICABLE
110	Designated Nat. Network	NO

STRUCTURE LOCATION INFORMATION

4	Place	POLK 90825
	Code	90825
9	Location	S 35 T 34 N R 23 W
11	Milepoint	52.69 miles
16	Latitude	37 D 37 M 54 S
17	Longitude	93 D 25 M 12 S

STRUCTURE TRAFFIC INFORMATION

29	AADT	3594
30	AADT Year	2009
102	Direction of Traffic	2-WAY TRAFFIC
109	AADT Truck Percent	10%
114	Future AADT	5750
115	Future AADT Year	2031

UNDERRECORD INFORMATION

6	Features Intersected	MILE CR
42B	Type of Service Under	WATERWAY
28B	Lanes Under Structure	00
54A	Vert. Clearance Ref.	N/A
54B	Vert. Clearance	0 Ft. 0 In.
55A	Rt. Lat Clear Ref.	N/A
55B	Rt. Lat Clearance	0 Ft. 0 In.
56	Left Lat Clearance	0 Ft. 0 In.
38	Navigation Control	PERMIT NOT REQ
39	Nav Vertical Clear	0 Ft. 0 In.
40	Nav Horizontal Clear	0 Ft. 0 In.
111	Nav. Pier Protection	
116	Nav. Cl. Vert. Clear	

STRUCTURE GEOMETRIC INFORMATION

10	Inventory Rte. Vert. Clear	99 Ft. 99 In.
19	By pass Detour Length	14.26 miles
32	Approach Roadway Width	25 Ft. 11 In.
34	Skew	45.00 Degrees
35	Struct. Flared	NO
47	Total Horiz. Clear	27 Ft. 11 In.
48	Maximum Span Length	12 Ft. 2 In.
49	Structure Length	35 Ft. 5 In.
50A	Left Curb/Sidewalk Width	0 Ft. 0 In.
50B	Right Curb/Sidewalk Width	0 Ft. 0 In.
51	Curb to Curb Br. Width	30 Ft. 10 In.
52	Deck Width (Out-Out)	35 Ft. 1 In.
53	Vert. Clearance Over Deck	99 Ft. 99 In.

Design_No = L0341



Missouri Department of Transportation
Bridge Inventory and Inspection System
Structural Inventory & Appraisal Sheet

December 2, 2024
1:56:41pm

COUNTY : POLK BRIDGE : L0341 REVIEW STATUS : APPROVED NBI STATUS : P
RECORD TYPE : ROUTE CARRIED 'ON' STRUCT RUN DATE : 1/19/2011 SUBMITTAL YEAR : 2010

LOAD RATING AND POSTING INFORMATION			MATERIAL/CONSTRUCTION INFORMATION		
31	Design Load	H 15	43A	Main Struc. Mat type	CONCRETE CONTINUOUS
41	Structure Status	A - OPEN NO RESTRICTIONS	43B	Main struc Constr. Type	CULVERT
63	Oper. Rating Meth.	NO RATING ANALYSIS PERFMD	45	# of Main Spans	2
64	Operating Rating	55 Tons.	44A	Appr Struc. Mat type	
65	Inventory Rating Meth	NO RATING ANALYSIS PERFMD	44B	Appr Struc. Cnstr. type	
66	Inventory Rating	19 Tons.	46	# of Approach Span	0
70	Bridge Posting Code	=>LEGAL LOADS	107	Deck Mat/Constr.	NA
PROPOSED IMPROVEMENT INFORMATION			108A	Wear Surf Mat/Constr.	NA
Sufficiency Rating 48.6 Percent			108B	Membrane Mat/Constr.	NA
Deficiency Rating NOT DEFICIENT			108C	Deck Protect Mat/Constr.	NA
Funding Eligibility			CONDITION RATING INFORMATION		
75A	Proposed Work		58	Deck Cond. Rating	N
75B	Work Done By		59	Superstructure Cond. Rating	N
76	New Struc Length	0 Ft. 0 In.	60	Substructure Cond. Rating	N
94	Struc Improve Cost	\$ 0,000	61	Channel /Channel Protection Cond. Rating	5
95	Roadway Improve Cost	\$ 0,000	62	Culvert Cond. Rating	5
96	Total Project Cost	\$ 0,000	INSPECTION INFORMATION		
97	Year of Cost Estimates	0	90	Gen. Insp Date	11 / 09
APPRAISAL RATING INFORMATION			91	Gen. Insp. Frequency	24 Months
36A	Br. Rail App. Rating	NOT APPLICABLE	92A	Frac. Critical Inspection	N Months
36B	Transition Rail App. Rating	NOT APPLICABLE	93A	Frac. Critical Insp. Date	
36C	Approach Rail App. Rating	NOT APPLICABLE	92B	Underwater Inspection	N Months
36D	Rail End Treat. App. Rating	NOT APPLICABLE	93B	Underwater Insp. Date	
67	Struc Eval App. Rating	4	92C	Special Inspection	N Months
68	Deck Geometry App. Rating	4	93C	Special Inspection Date	
69	Underclearance App. Rating	N	BORDER BRIDGE INFORMATION		
71	Waterway Adeq. App. Rating	6	98	Neighboring State Code	
72	Approach Road App. Rating	8	98B	Neighboring State % Respon	
113	Scour Assess App. Rating	8	99	Neighboring State Struc. No.	
APPROVED POSTING INFORMATION			FIELD POSTING INFORMATION		
Approved Posting Category S-1			Field Posting Category S-1		
Ton1 Ton2 Ton3			Ton1 Ton2 Ton3		
Tonnage Values for Posting Sign			Tonnage Values for Posting Sign		
General Text for Posting Sign			General Text for Posting Sign		
NO POSTING REQUIRED			NO POSTING REQUIRED		

Design_No = L0341



Missouri Department of Transportation
Bridge Inventory and Inspection System
Structural Inventory & Appraisal Sheet

December 2, 2024
1:56:41pm

COUNTY : POLK BRIDGE : L0341 REVIEW STATUS : APPROVED NBI STATUS : P
RECORD TYPE : ROUTE CARRIED 'ON' STRUCT RUN DATE : 2/7/2018 SUBMITTAL YEAR : 2017

GENERAL STRUCTURE INFORMATION

1	State	MISSOURI
2	District	SW
3	County	POLK
8	Federal ID No.	6215
27	Year Built	1948
106	Year Reconstructed	0
42A	Type of Service On	HIGHWAY
21	Structure Maintenance	STATE HIGHWAY AGENCY
22	Structure Owner	STATE HIGHWAY AGENCY
33	Br. Median Code	NO MEDIAN
37	Historical Significance	NOT ELIGIBLE FOR NR OF HP
101	Parallel Struc Desg	NONE EXISTS
103	Temporary Structure	NOT TEMPORARY
112	NBIS Bridge Length	YES

ROUTE DESIGNATION INFORMATION

5A	Record Type	ROUTE CARRIED 'ON' STRUCT
5B	Route Signing Prefix	MO
5C	Designated Level of Service	MAINLINE
5D	Route Number	00083
5E	Directional Suffix	NOT APPLICABLE
7	Facility Carried	MO 83 S
12	Base Hwy. Network	NO
13A	LRS Inventory Route No.	
13B	Subroute No.	
20	Toll Status	ON FREE ROAD
26	Functional Classification	07-RURAL MAJOR COLLECTOR
28A	Lanes on Structure	02
100	STRAHNET Designation	RTE NOT A DEFENSE HWY
104	National Highway System	NOT ON NHS
105	Federal Lands Highway	NOT APPLICABLE
110	Designated Nat. Network	NO

STRUCTURE LOCATION INFORMATION

4	Place	POLK 90825
	Code	90825
9	Location	S 35 T 34 N R 23 W
11	Milepoint	52.69 miles
16	Latitude	37 D 37 M 51 S
17	Longitude	93 D 25 M 15 S

STRUCTURE TRAFFIC INFORMATION

29	AADT	3832
30	AADT Year	2016
102	Direction of Traffic	2-WAY TRAFFIC
109	AADT Truck Percent	11%
114	Future AADT	6131
115	Future AADT Year	2036

UNDERRECORD INFORMATION

6	Features Intersected	MILE CR
42B	Type of Service Under	WATERWAY
28B	Lanes Under Structure	00
54A	Vert. Clearance Ref.	N/A
54B	Vert. Clearance	0 Ft. 0 In.
55A	Rt. Lat Clear Ref.	N/A
55B	Rt. Lat Clearance	0 Ft. 0 In.
56	Left Lat Clearance	0 Ft. 0 In.
38	Navigation Control	PERMIT NOT REQ
39	Nav Vertical Clear	0 Ft. 0 In.
40	Nav Horizontal Clear	0 Ft. 0 In.
111	Nav. Pier Protection	
116	Nav. Cl. Vert. Clear	

STRUCTURE GEOMETRIC INFORMATION

10	Inventory Rte. Vert. Clear	99 Ft. 99 In.
19	By pass Detour Length	14.26 miles
32	Approach Roadway Width	25 Ft. 11 In.
34	Skew	45.00 Degrees
35	Struct. Flared	NO
47	Total Horiz. Clear	27 Ft. 11 In.
48	Maximum Span Length	12 Ft. 2 In.
49	Structure Length	35 Ft. 5 In.
50A	Left Curb/Sidewalk Width	0 Ft. 0 In.
50B	Right Curb/Sidewalk Width	0 Ft. 0 In.
51	Curb to Curb Br. Width	30 Ft. 10 In.
52	Deck Width (Out-Out)	35 Ft. 1 In.
53	Vert. Clearance Over Deck	99 Ft. 99 In.

Design_No = L0341



Missouri Department of Transportation
Bridge Inventory and Inspection System
Structural Inventory & Appraisal Sheet

December 2, 2024
1:56:41pm

COUNTY : POLK BRIDGE : L0341 REVIEW STATUS : APPROVED NBI STATUS : P
RECORD TYPE : ROUTE CARRIED 'ON' STRUCT RUN DATE : 2/7/2018 SUBMITTAL YEAR : 2017

LOAD RATING AND POSTING INFORMATION			MATERIAL/CONSTRUCTION INFORMATION		
31	Design Load	H 15	43A	Main Struc. Mat type	CONCRETE CONTINUOUS
41	Structure Status	A - OPEN NO RESTRICTIONS	43B	Main struc Constr. Type	CULVERT
63	Oper. Rating Meth.	LOAD FACTOR	45	# of Main Spans	2
64	Operating Rating	63 Tons.	44A	Appr Struc. Mat type	
65	Inventory Rating Meth	LOAD FACTOR	44B	Appr Struc. Cnstr. type	
66	Inventory Rating	38 Tons.	46	# of Approach Span	0
70	Bridge Posting Code	=>LEGAL LOADS	107	Deck Mat/Constr.	NA
PROPOSED IMPROVEMENT INFORMATION			108A	Wear Surf Mat/Constr.	NA
Sufficiency Rating 68.3 Percent			108B	Membrane Mat/Constr.	NA
Deficiency Rating NOT DEFICIENT			108C	Deck Protect Mat/Constr.	NA
Funding Eligibility			CONDITION RATING INFORMATION		
75A	Proposed Work		58	Deck Cond. Rating	N
75B	Work Done By		59	Superstructure Cond. Rating	N
76	New Struc Length	0 Ft. 0 In.	60	Substructure Cond. Rating	N
94	Struc Improve Cost	\$ 0,000	61	Channel /Channel Protection Cond. Rating	4
95	Roadway Improve Cost	\$ 0,000	62	Culvert Cond. Rating	5
96	Total Project Cost	\$ 0,000	INSPECTION INFORMATION		
97	Year of Cost Estimates	0	90	Gen. Insp Date	11 / 17
APPRAISAL RATING INFORMATION			91	Gen. Insp. Frequency	24 Months
36A	Br. Rail App. Rating	DOES NOT MEET ACCEPT STND	92A	Frac. Critical Inspection	N Months
36B	Transition Rail App. Rating	DOES NOT MEET ACCEPT STND	93A	Frac. Critical Insp. Date	
36C	Approach Rail App. Rating	DOES NOT MEET ACCEPT STND	92B	Underwater Inspection	N Months
36D	Rail End Treat. App. Rating	DOES NOT MEET ACCEPT STND	93B	Underwater Insp. Date	
67	Struc Eval App. Rating	5	92C	Special Inspection	N Months
68	Deck Geometry App. Rating	4	93C	Special Inspection Date	
69	Underclearance App. Rating	N	BORDER BRIDGE INFORMATION		
71	Waterway Adeq. App. Rating	6	98	Neighboring State Code	
72	Approach Road App. Rating	8	98B	Neighboring State % Respon	
113	Scour Assess App. Rating	4	99	Neighboring State Struc. No.	
APPROVED POSTING INFORMATION			FIELD POSTING INFORMATION		
Approved Posting Category S-1			Field Posting Category S-1		
Ton1 Ton2 Ton3			Ton1 Ton2 Ton3		
Tonnage Values for Posting Sign			Tonnage Values for Posting Sign		
General Text for Posting Sign			General Text for Posting Sign		
NO POSTING REQUIRED			NO POSTING REQUIRED		

Design_No = L0341



Missouri Department of Transportation
Bridge Inventory and Inspection System
Structural Inventory & Appraisal Sheet

December 2, 2024
1:56:41pm

COUNTY : POLK BRIDGE : L0341 REVIEW STATUS : PENDING NBI STATUS : P
RECORD TYPE : ROUTE CARRIED 'ON' STRUCT RUN DATE : 4/4/2002 SUBMITTAL YEAR : 2001

GENERAL STRUCTURE INFORMATION			ROUTE DESIGNATION INFORMATION		
1	State	MISSOURI	5A	Record Type	ROUTE CARRIED 'ON' STRUCT
2	District	SW	5B	Route Signing Prefix	MO
3	County	POLK	5C	Designated Level of Service	MAINLINE
8	Federal ID No.	6215	5D	Route Number	00083
27	Year Built	1948	5E	Directional Suffix	NOT APPLICABLE
106	Year Reconstructed	0	7	Facility Carried	MO 83
42A	Type of Service On	HIGHWAY	12	Base Hwy. Network	NO
21	Structure Maintenance	STATE HIGHWAY AGENCY	13A	LRS Inventory Route No.	
22	Structure Owner	STATE HIGHWAY AGENCY	13B	Subroute No.	
33	Br. Median Code	NO MEDIAN	20	Toll Status	ON FREE ROAD
37	Historical Significance	NOT ELIGIBLE FOR NR OF HP	26	Functional Classification	07-RURAL MAJOR COLLECTOR
101	Parallel Struc Desg	NONE EXISTS	28A	Lanes on Structure	02
103	Temporary Structure	NOT TEMPORARY	100	STRAHNET Designation	RTE NOT A DEFENSE HWY
112	NBIS Bridge Length	YES	104	National Highway System	NOT ON NHS
			105	Federal Lands Highway	NOT APPLICABLE
			110	Designated Nat. Network	NO
STRUCTURE LOCATION INFORMATION			STRUCTURE TRAFFIC INFORMATION		
4	Place	POLK 90825	29	AADT	3802
	Code	90825	30	AADT Year	2000
9	Location	S 35 T 34N R 23W	102	Direction of Traffic	2-WAY TRAFFIC
11	Milepoint	52.76 miles	109	AADT Truck Percent	10%
16	Latitude	37 D 37 M 54 S	114	Future AADT	6083
17	Longitude	93 D 25 M 12 S	115	Future AADT Year	2022
UNDERRECORD INFORMATION			STRUCTURE GEOMETRIC INFORMATION		
6	Features Intersected	MILE CR	10	Inventory Rte. Vert. Clear	99 Ft. 99 In.
42B	Type of Service Under	WATERWAY	19	By pass Detour Length	14.26 miles
28B	Lanes Under Structure	00	32	Approach Roadway Width	25 Ft. 11 In.
54A	Vert. Clearance Ref.	N/A	34	Skew	0.00 Degrees
54B	Vert. Clearance	0 Ft. 0 In.	35	Struct. Flared	NO
55A	Rt. Lat Clear Ref.	N/A	47	Total Horiz. Clear	27 Ft. 11 In.
55B	Rt. Lat Clearance	0 Ft. 0 In.	48	Maximum Span Length	12 Ft. 2 In.
56	Left Lat Clearance	0 Ft. 0 In.	49	Structure Length	35 Ft. 1 In.
38	Navigation Control	PERMIT NOT REQ	50A	Left Curb/Sidewalk Width	0 Ft. 0 In.
39	Nav Vertical Clear	0 Ft. 0 In.	50B	Right Curb/Sidewalk Width	0 Ft. 0 In.
40	Nav Horizontal Clear	0 Ft. 0 In.	51	Curb to Curb Br. Width	30 Ft. 10 In.
111	Nav. Pier Protection		52	Deck Width (Out-Out)	35 Ft. 1 In.
116	Nav. Cl. Vert. Clear		53	Vert. Clearance Over Deck	99 Ft. 99 In.

Design_No = L0341



Missouri Department of Transportation
Bridge Inventory and Inspection System
Structural Inventory & Appraisal Sheet

December 2, 2024
1:56:41pm

COUNTY : POLK BRIDGE : L0341 REVIEW STATUS : PENDING NBI STATUS : P
RECORD TYPE : ROUTE CARRIED 'ON' STRUCT RUN DATE : 4/4/2002 SUBMITTAL YEAR : 2001

LOAD RATING AND POSTING INFORMATION			MATERIAL/CONSTRUCTION INFORMATION		
31	Design Load	H 15	43A	Main Struc. Mat type	CONCRETE CONTINUOUS
41	Structure Status	A - OPEN NO RESTRICTIONS	43B	Main struc Constr. Type	CULVERT
63	Oper. Rating Meth.	NO RATING ANALYSIS PERFORMED	45	# of Main Spans	2
64	Operating Rating	55 Tons.	44A	Appr Struc. Mat type	
65	Inventory Rating Meth	NO RATING ANALYSIS PERFORMED	44B	Appr Struc. Cnstr. type	
66	Inventory Rating	19 Tons.	46	# of Approach Span	0
70	Bridge Posting Code	=>LEGAL LOADS	107	Deck Mat/Constr.	NA
PROPOSED IMPROVEMENT INFORMATION			108A	Wear Surf Mat/Constr.	NA
Sufficiency Rating 48.1 Percent			108B	Membrane Mat/Constr.	NA
Deficiency Rating NOT APPLICABLE			108C	Deck Protect Mat/Constr.	NA
Funding Eligibility			CONDITION RATING INFORMATION		
75A	Proposed Work		58	Deck Cond. Rating	N
75B	Work Done By		59	Superstructure Cond. Rating	N
76	New Struc Length	0 Ft. 0 In.	60	Substructure Cond. Rating	N
94	Struc Improve Cost	\$ 0,000	61	Channel /Channel Protection Cond. Rating	5
95	Roadway Improve Cost	\$ 0,000	62	Culvert Cond. Rating	5
96	Total Project Cost	\$ 0,000	INSPECTION INFORMATION		
97	Year of Cost Estimates	0	90	Gen. Insp Date	11 / 01
APPRAISAL RATING INFORMATION			91	Gen. Insp. Frequency	24 Months
36A	Br. Rail App. Rating	MEETS ACCEPTABLE STAND	92A	Frac. Critical Inspection	N Months
36B	Transition Rail App. Rating	MEETS ACCEPTABLE STAND	93A	Frac. Critical Insp. Date	
36C	Approach Rail App. Rating	MEETS ACCEPTABLE STAND	92B	Underwater Inspection	N Months
36D	Rail End Treat. App. Rating	MEETS ACCEPTABLE STAND	93B	Underwater Insp. Date	
67	Struc Eval App. Rating	4	92C	Special Inspection	N Months
68	Deck Geometry App. Rating	4	93C	Special Inspection Date	
69	Underclearance App. Rating	N	BORDER BRIDGE INFORMATION		
71	Waterway Adeq. App. Rating	7	98	Neighboring State Code	
72	Approach Road App. Rating	8	98B	Neighboring State % Respon	
113	Scour Assess App. Rating	8	99	Neighboring State Struc. No.	
APPROVED POSTING INFORMATION			FIELD POSTING INFORMATION		
Approved Posting Category S-1			Field Posting Category S-1		
Ton1 Ton2 Ton3			Ton1 Ton2 Ton3		
Tonnage Values for Posting Sign			Tonnage Values for Posting Sign		
General Text for Posting Sign			General Text for Posting Sign		
NO POSTING REQUIRED			NO POSTING REQUIRED		

Design_No = L0341



Missouri Department of Transportation
Bridge Inventory and Inspection System
Structural Inventory & Appraisal Sheet

December 2, 2024
1:56:41pm

COUNTY : POLK BRIDGE : L0341 REVIEW STATUS : APPROVED NBI STATUS : P
RECORD TYPE : ROUTE CARRIED 'ON' STRUCT RUN DATE : 1/4/2013 SUBMITTAL YEAR : 2012

GENERAL STRUCTURE INFORMATION

1	State	MISSOURI
2	District	SW
3	County	POLK
8	Federal ID No.	6215
27	Year Built	1948
106	Year Reconstructed	0
42A	Type of Service On	HIGHWAY
21	Structure Maintenance	STATE HIGHWAY AGENCY
22	Structure Owner	STATE HIGHWAY AGENCY
33	Br. Median Code	NO MEDIAN
37	Historical Significance	NOT ELIGIBLE FOR NR OF HP
101	Parallel Struc Desg	NONE EXISTS
103	Temporary Structure	NOT TEMPORARY
112	NBIS Bridge Length	YES

ROUTE DESIGNATION INFORMATION

5A	Record Type	ROUTE CARRIED 'ON' STRUCT
5B	Route Signing Prefix	MO
5C	Designated Level of Service	MAINLINE
5D	Route Number	00083
5E	Directional Suffix	NOT APPLICABLE
7	Facility Carried	MO 83 S
12	Base Hwy. Network	NO
13A	LRS Inventory Route No.	
13B	Subroute No.	
20	Toll Status	ON FREE ROAD
26	Functional Classification	07-RURAL MAJOR COLLECTOR
28A	Lanes on Structure	02
100	STRAHNET Designation	RTE NOT A DEFENSE HWY
104	National Highway System	NOT ON NHS
105	Federal Lands Highway	NOT APPLICABLE
110	Designated Nat. Network	NO

STRUCTURE LOCATION INFORMATION

4	Place	POLK 90825
	Code	90825
9	Location	S 35 T 34 N R 23 W
11	Milepoint	52.68 miles
16	Latitude	37 D 37 M 51 S
17	Longitude	93 D 25 M 15 S

STRUCTURE TRAFFIC INFORMATION

29	AADT	2946
30	AADT Year	2011
102	Direction of Traffic	2-WAY TRAFFIC
109	AADT Truck Percent	10%
114	Future AADT	4713
115	Future AADT Year	2033

UNDERRECORD INFORMATION

6	Features Intersected	MILE CR
42B	Type of Service Under	WATERWAY
28B	Lanes Under Structure	00
54A	Vert. Clearance Ref.	N/A
54B	Vert. Clearance	0 Ft. 0 In.
55A	Rt. Lat Clear Ref.	N/A
55B	Rt. Lat Clearance	0 Ft. 0 In.
56	Left Lat Clearance	0 Ft. 0 In.
38	Navigation Control	PERMIT NOT REQ
39	Nav Vertical Clear	0 Ft. 0 In.
40	Nav Horizontal Clear	0 Ft. 0 In.
111	Nav. Pier Protection	
116	Nav. Cl. Vert. Clear	

STRUCTURE GEOMETRIC INFORMATION

10	Inventory Rte. Vert. Clear	99 Ft. 99 In.
19	By pass Detour Length	14.26 miles
32	Approach Roadway Width	25 Ft. 11 In.
34	Skew	45.00 Degrees
35	Struct. Flared	NO
47	Total Horiz. Clear	27 Ft. 11 In.
48	Maximum Span Length	12 Ft. 2 In.
49	Structure Length	35 Ft. 5 In.
50A	Left Curb/Sidewalk Width	0 Ft. 0 In.
50B	Right Curb/Sidewalk Width	0 Ft. 0 In.
51	Curb to Curb Br. Width	30 Ft. 10 In.
52	Deck Width (Out-Out)	35 Ft. 1 In.
53	Vert. Clearance Over Deck	99 Ft. 99 In.

Design_No = L0341



Missouri Department of Transportation
Bridge Inventory and Inspection System
Structural Inventory & Appraisal Sheet

December 2, 2024
1:56:41pm

COUNTY : POLK BRIDGE : L0341 REVIEW STATUS : APPROVED NBI STATUS : P
RECORD TYPE : ROUTE CARRIED 'ON' STRUCT RUN DATE : 1/4/2013 SUBMITTAL YEAR : 2012

LOAD RATING AND POSTING INFORMATION			MATERIAL/CONSTRUCTION INFORMATION		
31	Design Load	H 15	43A	Main Struc. Mat type	CONCRETE CONTINUOUS
41	Structure Status	A - OPEN NO RESTRICTIONS	43B	Main struc Constr. Type	CULVERT
63	Oper. Rating Meth.	NO RATING ANALYSIS PERFMD	45	# of Main Spans	2
64	Operating Rating	55 Tons.	44A	Appr Struc. Mat type	
65	Inventory Rating Meth	NO RATING ANALYSIS PERFMD	44B	Appr Struc. Cnstr. type	
66	Inventory Rating	19 Tons.	46	# of Approach Span	0
70	Bridge Posting Code	=>LEGAL LOADS	107	Deck Mat/Constr.	NA
PROPOSED IMPROVEMENT INFORMATION			108A	Wear Surf Mat/Constr.	NA
Sufficiency Rating 50.0 Percent			108B	Membrane Mat/Constr.	NA
Deficiency Rating NOT DEFICIENT			108C	Deck Protect Mat/Constr.	NA
Funding Eligibility			CONDITION RATING INFORMATION		
75A	Proposed Work		58	Deck Cond. Rating	N
75B	Work Done By		59	Superstructure Cond. Rating	N
76	New Struc Length	0 Ft. 0 In.	60	Substructure Cond. Rating	N
94	Struc Improve Cost	\$ 0,000	61	Channel /Channel Protection Cond. Rating	5
95	Roadway Improve Cost	\$ 0,000	62	Culvert Cond. Rating	5
96	Total Project Cost	\$ 0,000	INSPECTION INFORMATION		
97	Year of Cost Estimates	0	90	Gen. Insp Date	12 / 11
APPRAISAL RATING INFORMATION			91	Gen. Insp. Frequency	24 Months
36A	Br. Rail App. Rating	NOT APPLICABLE	92A	Frac. Critical Inspection	N Months
36B	Transition Rail App. Rating	NOT APPLICABLE	93A	Frac. Critical Insp. Date	
36C	Approach Rail App. Rating	NOT APPLICABLE	92B	Underwater Inspection	N Months
36D	Rail End Treat. App. Rating	NOT APPLICABLE	93B	Underwater Insp. Date	
67	Struc Eval App. Rating	4	92C	Special Inspection	N Months
68	Deck Geometry App. Rating	4	93C	Special Inspection Date	
69	Underclearance App. Rating	N	BORDER BRIDGE INFORMATION		
71	Waterway Adeq. App. Rating	6	98	Neighboring State Code	
72	Approach Road App. Rating	8	98B	Neighboring State % Respon	
113	Scour Assess App. Rating	8	99	Neighboring State Struc. No.	
APPROVED POSTING INFORMATION			FIELD POSTING INFORMATION		
Approved Posting Category S-1			Field Posting Category S-1		
Ton1 Ton2 Ton3			Ton1 Ton2 Ton3		
Tonnage Values for Posting Sign			Tonnage Values for Posting Sign		
General Text for Posting Sign			General Text for Posting Sign		
NO POSTING REQUIRED			NO POSTING REQUIRED		

Design_No = L0341



Missouri Department of Transportation
Bridge Inventory and Inspection System
Structural Inventory & Appraisal Sheet

December 2, 2024
1:56:41pm

COUNTY : POLK BRIDGE : L0341 REVIEW STATUS : APPROVED NBI STATUS : P
RECORD TYPE : ROUTE CARRIED 'ON' STRUCT RUN DATE : 3/7/2024 SUBMITTAL YEAR : 2023

GENERAL STRUCTURE INFORMATION			ROUTE DESIGNATION INFORMATION		
1	State	MISSOURI	5A	Record Type	ROUTE CARRIED 'ON' STRUCT
2	District	SW	5B	Route Signing Prefix	MO
3	County	POLK	5C	Designated Level of Service	MAINLINE
8	Federal ID No.	6215	5D	Route Number	00083
27	Year Built	1948	5E	Directional Suffix	NOT APPLICABLE
106	Year Reconstructed	0	7	Facility Carried	MO 83 S
42A	Type of Service On	HIGHWAY	12	Base Hwy. Network	NO
21	Structure Maintenance	STATE HIGHWAY AGENCY	13A	LRS Inventory Route No.	
22	Structure Owner	STATE HIGHWAY AGENCY	13B	Subroute No.	
33	Br. Median Code	NO MEDIAN	20	Toll Status	ON FREE ROAD
37	Historical Significance	NOT ELIGIBLE FOR NR OF HP	26	Functional Classification	07-RURAL MAJOR COLLECTOR
101	Parallel Struc Desg	NONE EXISTS	28A	Lanes on Structure	02
103	Temporary Structure	NOT TEMPORARY	100	STRAHNET Designation	RTE NOT A DEFENSE HWY
112	NBIS Bridge Length	YES	104	National Highway System	NOT ON NHS
			105	Federal Lands Highway	NOT APPLICABLE
			110	Designated Nat. Network	NO
STRUCTURE LOCATION INFORMATION			STRUCTURE TRAFFIC INFORMATION		
4	Place	POLK 90825	29	AADT	4308
	Code	90825	30	AADT Year	2023
9	Location	S 35 T 34 N R 23 W	102	Direction of Traffic	2-WAY TRAFFIC
11	Milepoint	52.69 miles	109	AADT Truck Percent	6%
16	Latitude	37 D 37 M 51 S	114	Future AADT	6893
17	Longitude	93 D 25 M 15 S	115	Future AADT Year	2043
UNDERRECORD INFORMATION			STRUCTURE GEOMETRIC INFORMATION		
6	Features Intersected	MILE CR	10	Inventory Rte. Vert. Clear	99 Ft. 99 In.
42B	Type of Service Under	WATERWAY	19	By pass Detour Length	14.26 miles
28B	Lanes Under Structure	00	32	Approach Roadway Width	25 Ft. 11 In.
54A	Vert. Clearance Ref.	N/A	34	Skew	45.00 Degrees
54B	Vert. Clearance	0 Ft. 0 In.	35	Struct. Flared	NO
55A	Rt. Lat Clear Ref.	N/A	47	Total Horiz. Clear	27 Ft. 11 In.
55B	Rt. Lat Clearance	0 Ft. 0 In.	48	Maximum Span Length	12 Ft. 2 In.
56	Left Lat Clearance	0 Ft. 0 In.	49	Structure Length	35 Ft. 5 In.
38	Navigation Control	PERMIT NOT REQ	50A	Left Curb/Sidewalk Width	0 Ft. 0 In.
39	Nav Vertical Clear	0 Ft. 0 In.	50B	Right Curb/Sidewalk Width	0 Ft. 0 In.
40	Nav Horizontal Clear	0 Ft. 0 In.	51	Curb to Curb Br. Width	30 Ft. 10 In.
111	Nav. Pier Protection		52	Deck Width (Out-Out)	35 Ft. 1 In.
116	Nav. Cl. Vert. Clear		53	Vert. Clearance Over Deck	99 Ft. 99 In.

Design_No = L0341



Missouri Department of Transportation
Bridge Inventory and Inspection System
Structural Inventory & Appraisal Sheet

December 2, 2024
1:56:41pm

COUNTY : POLK BRIDGE : L0341 REVIEW STATUS : APPROVED NBI STATUS : P
RECORD TYPE : ROUTE CARRIED 'ON' STRUCT RUN DATE : 3/7/2024 SUBMITTAL YEAR : 2023

LOAD RATING AND POSTING INFORMATION			MATERIAL/CONSTRUCTION INFORMATION		
31	Design Load	H 15	43A	Main Struc. Mat type	CONCRETE CONTINUOUS
41	Structure Status	A - OPEN NO RESTRICTIONS	43B	Main struc Constr. Type	CULVERT
63	Oper. Rating Meth.	LOAD FACTOR	45	# of Main Spans	2
64	Operating Rating	63 Tons.	44A	Appr Struc. Mat type	
65	Inventory Rating Meth	LOAD FACTOR	44B	Appr Struc. Cnstr. type	
66	Inventory Rating	38 Tons.	46	# of Approach Span	0
70	Bridge Posting Code	=>LEGAL LOADS	107	Deck Mat/Constr.	NA
			108A	Wear Surf Mat/Constr.	NA
			108B	Membrane Mat/Constr.	NA
			108C	Deck Protect Mat/Constr.	NA
PROPOSED IMPROVEMENT INFORMATION			CONDITION RATING INFORMATION		
Sufficiency Rating		67.6 Percent	58	Deck Cond. Rating	N
Deficiency Rating		NOT DEFICIENT	59	Superstructure Cond. Rating	N
Funding Eligibility			60	Substructure Cond. Rating	N
75A	Proposed Work		61	Channel /Channel Protection Cond. Rating	4
75B	Work Done By		62	Culvert Cond. Rating	5
76	New Struc Length	0 Ft. 0 In.			
94	Struc Improve Cost	\$ 0,000	INSPECTION INFORMATION		
95	Roadway Improve Cost	\$ 0,000	90	Gen. Insp Date	11 / 23
96	Total Project Cost	\$ 0,000	91	Gen. Insp. Frequency	24 Months
97	Year of Cost Estimates	0	92A	Frac. Critical Inspection	N Months
			93A	Frac. Critical Insp. Date	
			92B	Underwater Inspection	N Months
			93B	Underwater Insp. Date	
			92C	Special Inspection	N Months
			93C	Special Inspection Date	
APPRAISAL RATING INFORMATION			BORDER BRIDGE INFORMATION		
36A	Br. Rail App. Rating	DOES NOT MEET ACCEPT STND	98	Neighboring State Code	
36B	Transition Rail App. Rating	DOES NOT MEET ACCEPT STND	98B	Neighboring State % Respon	
36C	Approach Rail App. Rating	DOES NOT MEET ACCEPT STND	99	Neighboring State Struc. No.	
36D	Rail End Treat. App. Rating	DOES NOT MEET ACCEPT STND			
67	Struc Eval App. Rating	5	APPROVED POSTING INFORMATION		
68	Deck Geometry App. Rating	4	FIELD POSTING INFORMATION		
69	Underclearance App. Rating	N	Approved Posting Category		S-1
71	Waterway Adeq. App. Rating	6	Field Posting Category		S-1
72	Approach Road App. Rating	8	Ton1 Ton2 Ton3		Ton1 Ton2 Ton3
113	Scour Assess App. Rating	4	Tonnage Values for Posting Sign		Tonnage Values for Posting Sign
			General Text for Posting Sign		General Text for Posting Sign
			NO POSTING REQUIRED		NO POSTING REQUIRED

Design_No = L0341



Missouri Department of Transportation
Bridge Inventory and Inspection System
Structural Inventory & Appraisal Sheet

December 2, 2024
1:56:41pm

COUNTY : POLK BRIDGE : L0341 REVIEW STATUS : APPROVED NBI STATUS : P
RECORD TYPE : ROUTE CARRIED 'ON' STRUCT RUN DATE : 2/23/2012 SUBMITTAL YEAR : 2011

GENERAL STRUCTURE INFORMATION			ROUTE DESIGNATION INFORMATION		
1	State	MISSOURI	5A	Record Type	ROUTE CARRIED 'ON' STRUCT
2	District	SW	5B	Route Signing Prefix	MO
3	County	POLK	5C	Designated Level of Service	MAINLINE
8	Federal ID No.	6215	5D	Route Number	00083
27	Year Built	1948	5E	Directional Suffix	NOT APPLICABLE
106	Year Reconstructed	0	7	Facility Carried	MO 83 S
42A	Type of Service On	HIGHWAY	12	Base Hwy. Network	NO
21	Structure Maintenance	STATE HIGHWAY AGENCY	13A	LRS Inventory Route No.	
22	Structure Owner	STATE HIGHWAY AGENCY	13B	Subroute No.	
33	Br. Median Code	NO MEDIAN	20	Toll Status	ON FREE ROAD
37	Historical Significance	NOT ELIGIBLE FOR NR OF HP	26	Functional Classification	07-RURAL MAJOR COLLECTOR
101	Parallel Struc Desg	NONE EXISTS	28A	Lanes on Structure	02
103	Temporary Structure	NOT TEMPORARY	100	STRAHNET Designation	RTE NOT A DEFENSE HWY
112	NBIS Bridge Length	YES	104	National Highway System	NOT ON NHS
			105	Federal Lands Highway	NOT APPLICABLE
			110	Designated Nat. Network	NO
STRUCTURE LOCATION INFORMATION			STRUCTURE TRAFFIC INFORMATION		
4	Place	POLK 90825	29	AADT	2946
	Code	90825	30	AADT Year	2011
9	Location	S 35 T 34 N R 23 W	102	Direction of Traffic	2-WAY TRAFFIC
11	Milepoint	52.69 miles	109	AADT Truck Percent	10%
16	Latitude	37 D 37 M 51 S	114	Future AADT	4713
17	Longitude	93 D 25 M 15 S	115	Future AADT Year	2032
UNDERRECORD INFORMATION			STRUCTURE GEOMETRIC INFORMATION		
6	Features Intersected	MILE CR	10	Inventory Rte. Vert. Clear	99 Ft. 99 In.
42B	Type of Service Under	WATERWAY	19	By pass Detour Length	14.26 miles
28B	Lanes Under Structure	00	32	Approach Roadway Width	25 Ft. 11 In.
54A	Vert. Clearance Ref.	N/A	34	Skew	45.00 Degrees
54B	Vert. Clearance	0 Ft. 0 In.	35	Struct. Flared	NO
55A	Rt. Lat Clear Ref.	N/A	47	Total Horiz. Clear	27 Ft. 11 In.
55B	Rt. Lat Clearance	0 Ft. 0 In.	48	Maximum Span Length	12 Ft. 2 In.
56	Left Lat Clearance	0 Ft. 0 In.	49	Structure Length	35 Ft. 5 In.
38	Navigation Control	PERMIT NOT REQ	50A	Left Curb/Sidewalk Width	0 Ft. 0 In.
39	Nav Vertical Clear	0 Ft. 0 In.	50B	Right Curb/Sidewalk Width	0 Ft. 0 In.
40	Nav Horizontal Clear	0 Ft. 0 In.	51	Curb to Curb Br. Width	30 Ft. 10 In.
111	Nav. Pier Protection		52	Deck Width (Out-Out)	35 Ft. 1 In.
116	Nav. Cl. Vert. Clear		53	Vert. Clearance Over Deck	99 Ft. 99 In.

Design_No = L0341



Missouri Department of Transportation
Bridge Inventory and Inspection System
Structural Inventory & Appraisal Sheet

December 2, 2024
1:56:41pm

COUNTY : POLK BRIDGE : L0341 REVIEW STATUS : APPROVED NBI STATUS : P
RECORD TYPE : ROUTE CARRIED 'ON' STRUCT RUN DATE : 2/23/2012 SUBMITTAL YEAR : 2011

LOAD RATING AND POSTING INFORMATION			MATERIAL/CONSTRUCTION INFORMATION		
31	Design Load	H 15	43A	Main Struc. Mat type	CONCRETE CONTINUOUS
41	Structure Status	A - OPEN NO RESTRICTIONS	43B	Main struc Constr. Type	CULVERT
63	Oper. Rating Meth.	NO RATING ANALYSIS PERFMD	45	# of Main Spans	2
64	Operating Rating	55 Tons.	44A	Appr Struc. Mat type	
65	Inventory Rating Meth	NO RATING ANALYSIS PERFMD	44B	Appr Struc. Cnstr. type	
66	Inventory Rating	19 Tons.	46	# of Approach Span	0
70	Bridge Posting Code	=>LEGAL LOADS	107	Deck Mat/Constr.	NA
PROPOSED IMPROVEMENT INFORMATION			108A	Wear Surf Mat/Constr.	NA
Sufficiency Rating 50.0 Percent			108B	Membrane Mat/Constr.	NA
Deficiency Rating NOT DEFICIENT			108C	Deck Protect Mat/Constr.	NA
Funding Eligibility			CONDITION RATING INFORMATION		
75A	Proposed Work		58	Deck Cond. Rating	N
75B	Work Done By		59	Superstructure Cond. Rating	N
76	New Struc Length	0 Ft. 0 In.	60	Substructure Cond. Rating	N
94	Struc Improve Cost	\$ 0,000	61	Channel /Channel Protection Cond. Rating	5
95	Roadway Improve Cost	\$ 0,000	62	Culvert Cond. Rating	5
96	Total Project Cost	\$ 0,000	INSPECTION INFORMATION		
97	Year of Cost Estimates	0	90	Gen. Insp Date	12 / 11
APPRAISAL RATING INFORMATION			91	Gen. Insp. Frequency	24 Months
36A	Br. Rail App. Rating	NOT APPLICABLE	92A	Frac. Critical Inspection	N Months
36B	Transition Rail App. Rating	NOT APPLICABLE	93A	Frac. Critical Insp. Date	
36C	Approach Rail App. Rating	NOT APPLICABLE	92B	Underwater Inspection	N Months
36D	Rail End Treat. App. Rating	NOT APPLICABLE	93B	Underwater Insp. Date	
67	Struc Eval App. Rating	4	92C	Special Inspection	N Months
68	Deck Geometry App. Rating	4	93C	Special Inspection Date	
69	Underclearance App. Rating	N	BORDER BRIDGE INFORMATION		
71	Waterway Adeq. App. Rating	6	98	Neighboring State Code	
72	Approach Road App. Rating	8	98B	Neighboring State % Respon	
113	Scour Assess App. Rating	8	99	Neighboring State Struc. No.	
APPROVED POSTING INFORMATION			FIELD POSTING INFORMATION		
Approved Posting Category S-1			Field Posting Category S-1		
Ton1 Ton2 Ton3			Ton1 Ton2 Ton3		
Tonnage Values for Posting Sign			Tonnage Values for Posting Sign		
General Text for Posting Sign			General Text for Posting Sign		
NO POSTING REQUIRED			NO POSTING REQUIRED		

Design_No = L0341



Missouri Department of Transportation
Bridge Inventory and Inspection System
Structural Inventory & Appraisal Sheet

December 2, 2024
1:56:41pm

COUNTY : POLK BRIDGE : L0341 REVIEW STATUS : APPROVED NBI STATUS : P
RECORD TYPE : ROUTE CARRIED 'ON' STRUCT RUN DATE : 2/19/2016 SUBMITTAL YEAR : 2015

GENERAL STRUCTURE INFORMATION			ROUTE DESIGNATION INFORMATION		
1	State	MISSOURI	5A	Record Type	ROUTE CARRIED 'ON' STRUCT
2	District	SW	5B	Route Signing Prefix	MO
3	County	POLK	5C	Designated Level of Service	MAINLINE
8	Federal ID No.	6215	5D	Route Number	00083
27	Year Built	1948	5E	Directional Suffix	NOT APPLICABLE
106	Year Reconstructed	0	7	Facility Carried	MO 83 S
42A	Type of Service On	HIGHWAY	12	Base Hwy. Network	NO
21	Structure Maintenance	STATE HIGHWAY AGENCY	13A	LRS Inventory Route No.	
22	Structure Owner	STATE HIGHWAY AGENCY	13B	Subroute No.	
33	Br. Median Code	NO MEDIAN	20	Toll Status	ON FREE ROAD
37	Historical Significance	NOT ELIGIBLE FOR NR OF HP	26	Functional Classification	07-RURAL MAJOR COLLECTOR
101	Parallel Struc Desg	NONE EXISTS	28A	Lanes on Structure	02
103	Temporary Structure	NOT TEMPORARY	100	STRAHNET Designation	RTE NOT A DEFENSE HWY
112	NBIS Bridge Length	YES	104	National Highway System	NOT ON NHS
			105	Federal Lands Highway	NOT APPLICABLE
			110	Designated Nat. Network	NO
STRUCTURE LOCATION INFORMATION			STRUCTURE TRAFFIC INFORMATION		
4	Place	POLK 90825	29	AADT	3236
	Code	90825	30	AADT Year	2015
9	Location	S 35 T 34 N R 23 W	102	Direction of Traffic	2-WAY TRAFFIC
11	Milepoint	52.69 miles	109	AADT Truck Percent	10%
16	Latitude	37 D 37 M 51 S	114	Future AADT	5177
17	Longitude	93 D 25 M 15 S	115	Future AADT Year	2036
UNDERRECORD INFORMATION			STRUCTURE GEOMETRIC INFORMATION		
6	Features Intersected	MILE CR	10	Inventory Rte. Vert. Clear	99 Ft. 99 In.
42B	Type of Service Under	WATERWAY	19	By pass Detour Length	14.26 miles
28B	Lanes Under Structure	00	32	Approach Roadway Width	25 Ft. 11 In.
54A	Vert. Clearance Ref.	N/A	34	Skew	45.00 Degrees
54B	Vert. Clearance	0 Ft. 0 In.	35	Struct. Flared	NO
55A	Rt. Lat Clear Ref.	N/A	47	Total Horiz. Clear	27 Ft. 11 In.
55B	Rt. Lat Clearance	0 Ft. 0 In.	48	Maximum Span Length	12 Ft. 2 In.
56	Left Lat Clearance	0 Ft. 0 In.	49	Structure Length	35 Ft. 5 In.
38	Navigation Control	PERMIT NOT REQ	50A	Left Curb/Sidewalk Width	0 Ft. 0 In.
39	Nav Vertical Clear	0 Ft. 0 In.	50B	Right Curb/Sidewalk Width	0 Ft. 0 In.
40	Nav Horizontal Clear	0 Ft. 0 In.	51	Curb to Curb Br. Width	30 Ft. 10 In.
111	Nav. Pier Protection		52	Deck Width (Out-Out)	35 Ft. 1 In.
116	Nav. Cl. Vert. Clear		53	Vert. Clearance Over Deck	99 Ft. 99 In.

Design_No = L0341



Missouri Department of Transportation
Bridge Inventory and Inspection System
Structural Inventory & Appraisal Sheet

December 2, 2024
1:56:41pm

COUNTY : POLK BRIDGE : L0341 REVIEW STATUS : APPROVED NBI STATUS : P
RECORD TYPE : ROUTE CARRIED 'ON' STRUCT RUN DATE : 2/19/2016 SUBMITTAL YEAR : 2015

LOAD RATING AND POSTING INFORMATION			MATERIAL/CONSTRUCTION INFORMATION		
31	Design Load	H 15	43A	Main Struc. Mat type	CONCRETE CONTINUOUS
41	Structure Status	A - OPEN NO RESTRICTIONS	43B	Main struc Constr. Type	CULVERT
63	Oper. Rating Meth.	LOAD FACTOR	45	# of Main Spans	2
64	Operating Rating	63 Tons.	44A	Appr Struc. Mat type	
65	Inventory Rating Meth	LOAD FACTOR	44B	Appr Struc. Cnstr. type	
66	Inventory Rating	38 Tons.	46	# of Approach Span	0
70	Bridge Posting Code	=>LEGAL LOADS	107	Deck Mat/Constr.	NA
			108A	Wear Surf Mat/Constr.	NA
			108B	Membrane Mat/Constr.	NA
			108C	Deck Protect Mat/Constr.	NA
PROPOSED IMPROVEMENT INFORMATION			CONDITION RATING INFORMATION		
Sufficiency Rating 69.2 Percent			58	Deck Cond. Rating	N
Deficiency Rating NOT DEFICIENT			59	Superstructure Cond. Rating	N
Funding Eligibility			60	Substructure Cond. Rating	N
75A	Proposed Work		61	Channel /Channel Protection Cond. Rating	5
75B	Work Done By		62	Culvert Cond. Rating	5
76	New Struc Length	0 Ft. 0 In.			
94	Struc Improve Cost	\$ 0,000	INSPECTION INFORMATION		
95	Roadway Improve Cost	\$ 0,000	90	Gen. Insp Date	11 / 15
96	Total Project Cost	\$ 0,000	91	Gen. Insp. Frequency	24 Months
97	Year of Cost Estimates	0	92A	Frac. Critical Inspection	N Months
APPRAISAL RATING INFORMATION			93A	Frac. Critical Insp. Date	
36A	Br. Rail App. Rating	DOES NOT MEET ACCEPT STND	92B	Underwater Inspection	N Months
36B	Transition Rail App. Rating	DOES NOT MEET ACCEPT STND	93B	Underwater Insp. Date	
36C	Approach Rail App. Rating	DOES NOT MEET ACCEPT STND	92C	Special Inspection	N Months
36D	Rail End Treat. App. Rating	DOES NOT MEET ACCEPT STND	93C	Special Inspection Date	
67	Struc Eval App. Rating	5	BORDER BRIDGE INFORMATION		
68	Deck Geometry App. Rating	4	98	Neighboring State Code	
69	Underclearance App. Rating	N	98B	Neighboring State % Respon	
71	Waterway Adeq. App. Rating	6	99	Neighboring State Struc. No.	
72	Approach Road App. Rating	8			
113	Scour Assess App. Rating	8	FIELD POSTING INFORMATION		
APPROVED POSTING INFORMATION			FIELD POSTING INFORMATION		
Approved Posting Category S-1			Field Posting Category S-1		
Ton1 Ton2 Ton3			Ton1 Ton2 Ton3		
Tonnage Values for Posting Sign			Tonnage Values for Posting Sign		
General Text for Posting Sign			General Text for Posting Sign		
NO POSTING REQUIRED			NO POSTING REQUIRED		

Design_No = L0341



Missouri Department of Transportation
Bridge Inventory and Inspection System
Structural Inventory & Appraisal Sheet

December 2, 2024
1:56:41pm

COUNTY : POLK BRIDGE : L0341 REVIEW STATUS : APPROVED NBI STATUS : P
RECORD TYPE : ROUTE CARRIED 'ON' STRUCT RUN DATE : 4/2/2003 SUBMITTAL YEAR : 2002

GENERAL STRUCTURE INFORMATION			ROUTE DESIGNATION INFORMATION		
1	State	MISSOURI	5A	Record Type	ROUTE CARRIED 'ON' STRUCT
2	District	SW	5B	Route Signing Prefix	MO
3	County	POLK	5C	Designated Level of Service	MAINLINE
8	Federal ID No.	6215	5D	Route Number	00083
27	Year Built	1948	5E	Directional Suffix	NOT APPLICABLE
106	Year Reconstructed	0	7	Facility Carried	MO 83 S
42A	Type of Service On	HIGHWAY	12	Base Hwy. Network	NO
21	Structure Maintenance	STATE HIGHWAY AGENCY	13A	LRS Inventory Route No.	
22	Structure Owner	STATE HIGHWAY AGENCY	13B	Subroute No.	
33	Br. Median Code	NO MEDIAN	20	Toll Status	ON FREE ROAD
37	Historical Significance	NOT ELIGIBLE FOR NR OF HP	26	Functional Classification	07-RURAL MAJOR COLLECTOR
101	Parallel Struc Desg	NONE EXISTS	28A	Lanes on Structure	02
103	Temporary Structure	NOT TEMPORARY	100	STRAHNET Designation	RTE NOT A DEFENSE HWY
112	NBIS Bridge Length	YES	104	National Highway System	NOT ON NHS
			105	Federal Lands Highway	NOT APPLICABLE
			110	Designated Nat. Network	NO
STRUCTURE LOCATION INFORMATION			STRUCTURE TRAFFIC INFORMATION		
4	Place	POLK 90825	29	AADT	3831
	Code	90825	30	AADT Year	2001
9	Location	S 35 T 34N R 23W	102	Direction of Traffic	2-WAY TRAFFIC
11	Milepoint	52.76 miles	109	AADT Truck Percent	10%
16	Latitude	37 D 37 M 54 S	114	Future AADT	6129
17	Longitude	93 D 25 M 12 S	115	Future AADT Year	2023
UNDERRECORD INFORMATION			STRUCTURE GEOMETRIC INFORMATION		
6	Features Intersected	MILE CR	10	Inventory Rte. Vert. Clear	99 Ft. 99 In.
42B	Type of Service Under	WATERWAY	19	By pass Detour Length	14.26 miles
28B	Lanes Under Structure	00	32	Approach Roadway Width	25 Ft. 11 In.
54A	Vert. Clearance Ref.	N/A	34	Skew	45.00 Degrees
54B	Vert. Clearance	0 Ft. 0 In.	35	Struct. Flared	NO
55A	Rt. Lat Clear Ref.	N/A	47	Total Horiz. Clear	27 Ft. 11 In.
55B	Rt. Lat Clearance	0 Ft. 0 In.	48	Maximum Span Length	12 Ft. 2 In.
56	Left Lat Clearance	0 Ft. 0 In.	49	Structure Length	35 Ft. 5 In.
38	Navigation Control	PERMIT NOT REQ	50A	Left Curb/Sidewalk Width	0 Ft. 0 In.
39	Nav Vertical Clear	0 Ft. 0 In.	50B	Right Curb/Sidewalk Width	0 Ft. 0 In.
40	Nav Horizontal Clear	0 Ft. 0 In.	51	Curb to Curb Br. Width	30 Ft. 10 In.
111	Nav. Pier Protection		52	Deck Width (Out-Out)	35 Ft. 1 In.
116	Nav. Cl. Vert. Clear		53	Vert. Clearance Over Deck	99 Ft. 99 In.

Design_No = L0341



Missouri Department of Transportation
Bridge Inventory and Inspection System
Structural Inventory & Appraisal Sheet

December 2, 2024
1:56:41pm

COUNTY : POLK BRIDGE : L0341 REVIEW STATUS : APPROVED NBI STATUS : P
RECORD TYPE : ROUTE CARRIED 'ON' STRUCT RUN DATE : 4/2/2003 SUBMITTAL YEAR : 2002

LOAD RATING AND POSTING INFORMATION			MATERIAL/CONSTRUCTION INFORMATION		
31	Design Load	H 15	43A	Main Struc. Mat type	CONCRETE CONTINUOUS
41	Structure Status	A - OPEN NO RESTRICTIONS	43B	Main struc Constr. Type	CULVERT
63	Oper. Rating Meth.	NO RATING ANALYSIS PERFMD	45	# of Main Spans	2
64	Operating Rating	55 Tons.	44A	Appr Struc. Mat type	
65	Inventory Rating Meth	NO RATING ANALYSIS PERFMD	44B	Appr Struc. Cnstr. type	
66	Inventory Rating	19 Tons.	46	# of Approach Span	0
70	Bridge Posting Code	=>LEGAL LOADS	107	Deck Mat/Constr.	NA
PROPOSED IMPROVEMENT INFORMATION			108A	Wear Surf Mat/Constr.	NA
Sufficiency Rating 48.1 Percent			108B	Membrane Mat/Constr.	NA
Deficiency Rating NOT DEFICIENT			108C	Deck Protect Mat/Constr.	NA
Funding Eligibility			CONDITION RATING INFORMATION		
75A	Proposed Work		58	Deck Cond. Rating	N
75B	Work Done By		59	Superstructure Cond. Rating	N
76	New Struc Length	0 Ft. 0 In.	60	Substructure Cond. Rating	N
94	Struc Improve Cost	\$ 0,000	61	Channel /Channel Protection Cond. Rating	5
95	Roadway Improve Cost	\$ 0,000	62	Culvert Cond. Rating	5
96	Total Project Cost	\$ 0,000	INSPECTION INFORMATION		
97	Year of Cost Estimates	0	90	Gen. Insp Date	11 / 01
APPRAISAL RATING INFORMATION			91	Gen. Insp. Frequency	24 Months
36A	Br. Rail App. Rating	MEETS ACCEPTBLE STND	92A	Frac. Critical Inspection	N Months
36B	Transition Rail App. Rating	MEETS ACCEPTBLE STND	93A	Frac. Critical Insp. Date	
36C	Approach Rail App. Rating	MEETS ACCEPTBLE STND	92B	Underwater Inspection	N Months
36D	Rail End Treat. App. Rating	MEETS ACCEPTBLE STND	93B	Underwater Insp. Date	
67	Struc Eval App. Rating	4	92C	Special Inspection	N Months
68	Deck Geometry App. Rating	4	93C	Special Inspection Date	
69	Underclearance App. Rating	N	BORDER BRIDGE INFORMATION		
71	Waterway Adeq. App. Rating	6	98	Neighboring State Code	
72	Approach Road App. Rating	8	98B	Neighboring State % Respon	
113	Scour Assess App. Rating	8	99	Neighboring State Struc. No.	
APPROVED POSTING INFORMATION			FIELD POSTING INFORMATION		
Approved Posting Category S-1			Field Posting Category S-1		
Ton1 Ton2 Ton3			Ton1 Ton2 Ton3		
Tonnage Values for Posting Sign			Tonnage Values for Posting Sign		
General Text for Posting Sign			General Text for Posting Sign		
NO POSTING REQUIRED			NO POSTING REQUIRED		

Design_No = L0341



Missouri Department of Transportation
Bridge Inventory and Inspection System
Structural Inventory & Appraisal Sheet

December 2, 2024
1:56:41pm

COUNTY : POLK BRIDGE : L0341 REVIEW STATUS : APPROVED NBI STATUS : P
RECORD TYPE : ROUTE CARRIED 'ON' STRUCT RUN DATE : 2/6/2006 SUBMITTAL YEAR : 2005

GENERAL STRUCTURE INFORMATION			ROUTE DESIGNATION INFORMATION		
1	State	MISSOURI	5A	Record Type	ROUTE CARRIED 'ON' STRUCT
2	District	SW	5B	Route Signing Prefix	MO
3	County	POLK	5C	Designated Level of Service	MAINLINE
8	Federal ID No.	6215	5D	Route Number	00083
27	Year Built	1948	5E	Directional Suffix	NOT APPLICABLE
106	Year Reconstructed	0	7	Facility Carried	MO 83 S
42A	Type of Service On	HIGHWAY	12	Base Hwy. Network	NO
21	Structure Maintenance	STATE HIGHWAY AGENCY	13A	LRS Inventory Route No.	
22	Structure Owner	STATE HIGHWAY AGENCY	13B	Subroute No.	
33	Br. Median Code	NO MEDIAN	20	Toll Status	ON FREE ROAD
37	Historical Significance	NOT ELIGIBLE FOR NR OF HP	26	Functional Classification	07-RURAL MAJOR COLLECTOR
101	Parallel Struc Desg	NONE EXISTS	28A	Lanes on Structure	02
103	Temporary Structure	NOT TEMPORARY	100	STRAHNET Designation	RTE NOT A DEFENSE HWY
112	NBIS Bridge Length	YES	104	National Highway System	NOT ON NHS
			105	Federal Lands Highway	NOT APPLICABLE
			110	Designated Nat. Network	NO
STRUCTURE LOCATION INFORMATION			STRUCTURE TRAFFIC INFORMATION		
4	Place	POLK 90825	29	AADT	4309
	Code	90825	30	AADT Year	2004
9	Location	S 35 T 34 N R 23 W	102	Direction of Traffic	2-WAY TRAFFIC
11	Milepoint	52.76 miles	109	AADT Truck Percent	10%
16	Latitude	37 D 37 M 54 S	114	Future AADT	6894
17	Longitude	93 D 25 M 12 S	115	Future AADT Year	2026
UNDERRECORD INFORMATION			STRUCTURE GEOMETRIC INFORMATION		
6	Features Intersected	MILE CR	10	Inventory Rte. Vert. Clear	99 Ft. 99 In.
42B	Type of Service Under	WATERWAY	19	By pass Detour Length	14.26 miles
28B	Lanes Under Structure	00	32	Approach Roadway Width	25 Ft. 11 In.
54A	Vert. Clearance Ref.	N/A	34	Skew	45.00 Degrees
54B	Vert. Clearance	0 Ft. 0 In.	35	Struct. Flared	NO
55A	Rt. Lat Clear Ref.	N/A	47	Total Horiz. Clear	27 Ft. 11 In.
55B	Rt. Lat Clearance	0 Ft. 0 In.	48	Maximum Span Length	12 Ft. 2 In.
56	Left Lat Clearance	0 Ft. 0 In.	49	Structure Length	35 Ft. 5 In.
38	Navigation Control	PERMIT NOT REQ	50A	Left Curb/Sidewalk Width	0 Ft. 0 In.
39	Nav Vertical Clear	0 Ft. 0 In.	50B	Right Curb/Sidewalk Width	0 Ft. 0 In.
40	Nav Horizontal Clear	0 Ft. 0 In.	51	Curb to Curb Br. Width	30 Ft. 10 In.
111	Nav. Pier Protection		52	Deck Width (Out-Out)	35 Ft. 1 In.
116	Nav. Cl. Vert. Clear		53	Vert. Clearance Over Deck	99 Ft. 99 In.

Design_No = L0341



Missouri Department of Transportation
Bridge Inventory and Inspection System
Structural Inventory & Appraisal Sheet

December 2, 2024
1:56:41pm

COUNTY : POLK BRIDGE : L0341 REVIEW STATUS : APPROVED NBI STATUS : P
RECORD TYPE : ROUTE CARRIED 'ON' STRUCT RUN DATE : 2/6/2006 SUBMITTAL YEAR : 2005

LOAD RATING AND POSTING INFORMATION			MATERIAL/CONSTRUCTION INFORMATION		
31	Design Load	H 15	43A	Main Struc. Mat type	CONCRETE CONTINUOUS
41	Structure Status	A - OPEN NO RESTRICTIONS	43B	Main struc Constr. Type	CULVERT
63	Oper. Rating Meth.	NO RATING ANALYSIS PERFMD	45	# of Main Spans	2
64	Operating Rating	55 Tons.	44A	Appr Struc. Mat type	
65	Inventory Rating Meth	NO RATING ANALYSIS PERFMD	44B	Appr Struc. Cnstr. type	
66	Inventory Rating	19 Tons.	46	# of Approach Span	0
70	Bridge Posting Code	=>LEGAL LOADS	107	Deck Mat/Constr.	NA
			108A	Wear Surf Mat/Constr.	NA
			108B	Membrane Mat/Constr.	NA
			108C	Deck Protect Mat/Constr.	NA
PROPOSED IMPROVEMENT INFORMATION			CONDITION RATING INFORMATION		
Sufficiency Rating 47.0 Percent			58	Deck Cond. Rating	N
Deficiency Rating NOT DEFICIENT			59	Superstructure Cond. Rating	N
Funding Eligibility			60	Substructure Cond. Rating	N
75A	Proposed Work		61	Channel /Channel Protection Cond. Rating	5
75B	Work Done By		62	Culvert Cond. Rating	5
76	New Struc Length	0 Ft. 0 In.			
94	Struc Improve Cost	\$ 0,000	INSPECTION INFORMATION		
95	Roadway Improve Cost	\$ 0,000	90	Gen. Insp Date	11 / 05
96	Total Project Cost	\$ 0,000	91	Gen. Insp. Frequency	24 Months
97	Year of Cost Estimates	0	92A	Frac. Critical Inspection	N Months
			93A	Frac. Critical Insp. Date	
			92B	Underwater Inspection	N Months
			93B	Underwater Insp. Date	
			92C	Special Inspection	N Months
			93C	Special Inspection Date	
APPRAISAL RATING INFORMATION			BORDER BRIDGE INFORMATION		
36A	Br. Rail App. Rating	MEETS ACCEPTBLE STND	98	Neighboring State Code	
36B	Transition Rail App. Rating	MEETS ACCEPTBLE STND	98B	Neighboring State % Respon	
36C	Approach Rail App. Rating	MEETS ACCEPTBLE STND	99	Neighboring State Struc. No.	
36D	Rail End Treat. App. Rating	MEETS ACCEPTBLE STND			
67	Struc Eval App. Rating	4	APPROVED POSTING INFORMATION		
68	Deck Geometry App. Rating	4	FIELD POSTING INFORMATION		
69	Underclearance App. Rating	N	Approved Posting Category S-1		
71	Waterway Adeq. App. Rating	6	Ton1 Ton2 Ton3		
72	Approach Road App. Rating	8	Tonnage Values for Posting Sign		
113	Scour Assess App. Rating	8	General Text for Posting Sign		
			NO POSTING REQUIRED		

Design_No = L0341



Missouri Department of Transportation
Bridge Inventory and Inspection System
Structural Inventory & Appraisal Sheet

December 2, 2024
1:56:41pm

COUNTY : POLK BRIDGE : L0341 REVIEW STATUS : APPROVED NBI STATUS : P
RECORD TYPE : ROUTE CARRIED 'ON' STRUCT RUN DATE : 12/3/2014 SUBMITTAL YEAR : 2014

GENERAL STRUCTURE INFORMATION			ROUTE DESIGNATION INFORMATION		
1	State	MISSOURI	5A	Record Type	ROUTE CARRIED 'ON' STRUCT
2	District	SW	5B	Route Signing Prefix	MO
3	County	POLK	5C	Designated Level of Service	MAINLINE
8	Federal ID No.	6215	5D	Route Number	00083
27	Year Built	1948	5E	Directional Suffix	NOT APPLICABLE
106	Year Reconstructed	0	7	Facility Carried	MO 83 S
42A	Type of Service On	HIGHWAY	12	Base Hwy. Network	NO
21	Structure Maintenance	STATE HIGHWAY AGENCY	13A	LRS Inventory Route No.	
22	Structure Owner	STATE HIGHWAY AGENCY	13B	Subroute No.	
33	Br. Median Code	NO MEDIAN	20	Toll Status	ON FREE ROAD
37	Historical Significance	NOT ELIGIBLE FOR NR OF HP	26	Functional Classification	07-RURAL MAJOR COLLECTOR
101	Parallel Struc Desg	NONE EXISTS	28A	Lanes on Structure	02
103	Temporary Structure	NOT TEMPORARY	100	STRAHNET Designation	RTE NOT A DEFENSE HWY
112	NBIS Bridge Length	YES	104	National Highway System	NOT ON NHS
			105	Federal Lands Highway	NOT APPLICABLE
			110	Designated Nat. Network	NO
STRUCTURE LOCATION INFORMATION			STRUCTURE TRAFFIC INFORMATION		
4	Place	POLK 90825	29	AADT	3160
	Code	90825	30	AADT Year	2013
9	Location	S 35 T 34 N R 23 W	102	Direction of Traffic	2-WAY TRAFFIC
11	Milepoint	52.68 miles	109	AADT Truck Percent	10%
16	Latitude	37 D 37 M 51 S	114	Future AADT	5056
17	Longitude	93 D 25 M 15 S	115	Future AADT Year	2034
UNDERRECORD INFORMATION			STRUCTURE GEOMETRIC INFORMATION		
6	Features Intersected	MILE CR	10	Inventory Rte. Vert. Clear	99 Ft. 99 In.
42B	Type of Service Under	WATERWAY	19	By pass Detour Length	14.26 miles
28B	Lanes Under Structure	00	32	Approach Roadway Width	25 Ft. 11 In.
54A	Vert. Clearance Ref.	N/A	34	Skew	45.00 Degrees
54B	Vert. Clearance	0 Ft. 0 In.	35	Struct. Flared	NO
55A	Rt. Lat Clear Ref.	N/A	47	Total Horiz. Clear	27 Ft. 11 In.
55B	Rt. Lat Clearance	0 Ft. 0 In.	48	Maximum Span Length	12 Ft. 2 In.
56	Left Lat Clearance	0 Ft. 0 In.	49	Structure Length	35 Ft. 5 In.
38	Navigation Control	PERMIT NOT REQ	50A	Left Curb/Sidewalk Width	0 Ft. 0 In.
39	Nav Vertical Clear	0 Ft. 0 In.	50B	Right Curb/Sidewalk Width	0 Ft. 0 In.
40	Nav Horizontal Clear	0 Ft. 0 In.	51	Curb to Curb Br. Width	30 Ft. 10 In.
111	Nav. Pier Protection		52	Deck Width (Out-Out)	35 Ft. 1 In.
116	Nav. Cl. Vert. Clear		53	Vert. Clearance Over Deck	99 Ft. 99 In.

Design_No = L0341



Missouri Department of Transportation
Bridge Inventory and Inspection System
Structural Inventory & Appraisal Sheet

December 2, 2024
1:56:41pm

COUNTY : POLK BRIDGE : L0341 REVIEW STATUS : APPROVED NBI STATUS : P
RECORD TYPE : ROUTE CARRIED 'ON' STRUCT RUN DATE : 12/3/2014 SUBMITTAL YEAR : 2014

LOAD RATING AND POSTING INFORMATION			MATERIAL/CONSTRUCTION INFORMATION		
31	Design Load	H 15	43A	Main Struc. Mat type	CONCRETE CONTINUOUS
41	Structure Status	A - OPEN NO RESTRICTIONS	43B	Main struc Constr. Type	CULVERT
63	Oper. Rating Meth.	NO RATING ANALYSIS PERFMD	45	# of Main Spans	2
64	Operating Rating	55 Tons.	44A	Appr Struc. Mat type	
65	Inventory Rating Meth	NO RATING ANALYSIS PERFMD	44B	Appr Struc. Cnstr. type	
66	Inventory Rating	19 Tons.	46	# of Approach Span	0
70	Bridge Posting Code	=>LEGAL LOADS	107	Deck Mat/Constr.	NA
PROPOSED IMPROVEMENT INFORMATION			108A	Wear Surf Mat/Constr.	NA
Sufficiency Rating 49.6 Percent			108B	Membrane Mat/Constr.	NA
Deficiency Rating NOT DEFICIENT			108C	Deck Protect Mat/Constr.	NA
Funding Eligibility			CONDITION RATING INFORMATION		
75A	Proposed Work		58	Deck Cond. Rating	N
75B	Work Done By		59	Superstructure Cond. Rating	N
76	New Struc Length	0 Ft. 0 In.	60	Substructure Cond. Rating	N
94	Struc Improve Cost	\$ 0,000	61	Channel /Channel Protection Cond. Rating	5
95	Roadway Improve Cost	\$ 0,000	62	Culvert Cond. Rating	5
96	Total Project Cost	\$ 0,000	INSPECTION INFORMATION		
97	Year of Cost Estimates	0	90	Gen. Insp Date	12 / 13
APPRAISAL RATING INFORMATION			91	Gen. Insp. Frequency	24 Months
36A	Br. Rail App. Rating	NOT APPLICABLE	92A	Frac. Critical Inspection	N Months
36B	Transition Rail App. Rating	NOT APPLICABLE	93A	Frac. Critical Insp. Date	
36C	Approach Rail App. Rating	NOT APPLICABLE	92B	Underwater Inspection	N Months
36D	Rail End Treat. App. Rating	NOT APPLICABLE	93B	Underwater Insp. Date	
67	Struc Eval App. Rating	4	92C	Special Inspection	N Months
68	Deck Geometry App. Rating	4	93C	Special Inspection Date	
69	Underclearance App. Rating	N	BORDER BRIDGE INFORMATION		
71	Waterway Adeq. App. Rating	6	98	Neighboring State Code	
72	Approach Road App. Rating	8	98B	Neighboring State % Respon	
113	Scour Assess App. Rating	8	99	Neighboring State Struc. No.	
APPROVED POSTING INFORMATION			FIELD POSTING INFORMATION		
Approved Posting Category S-1			Field Posting Category S-1		
Ton1 Ton2 Ton3			Ton1 Ton2 Ton3		
Tonnage Values for Posting Sign			Tonnage Values for Posting Sign		
General Text for Posting Sign			General Text for Posting Sign		
NO POSTING REQUIRED			NO POSTING REQUIRED		

Design_No = L0341