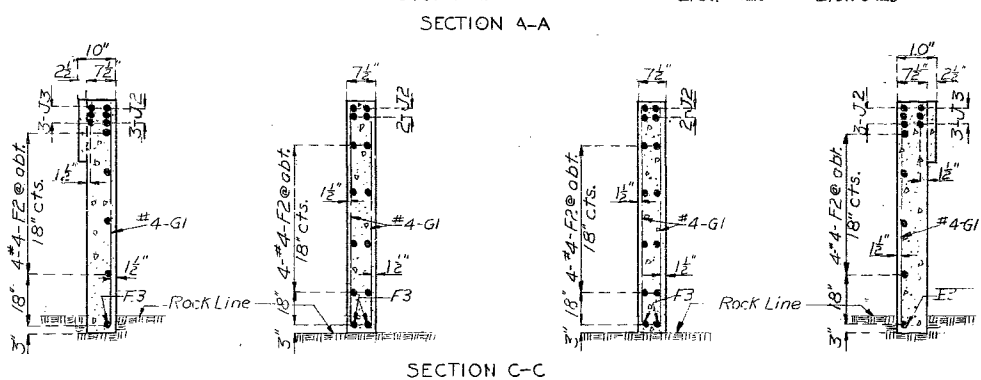
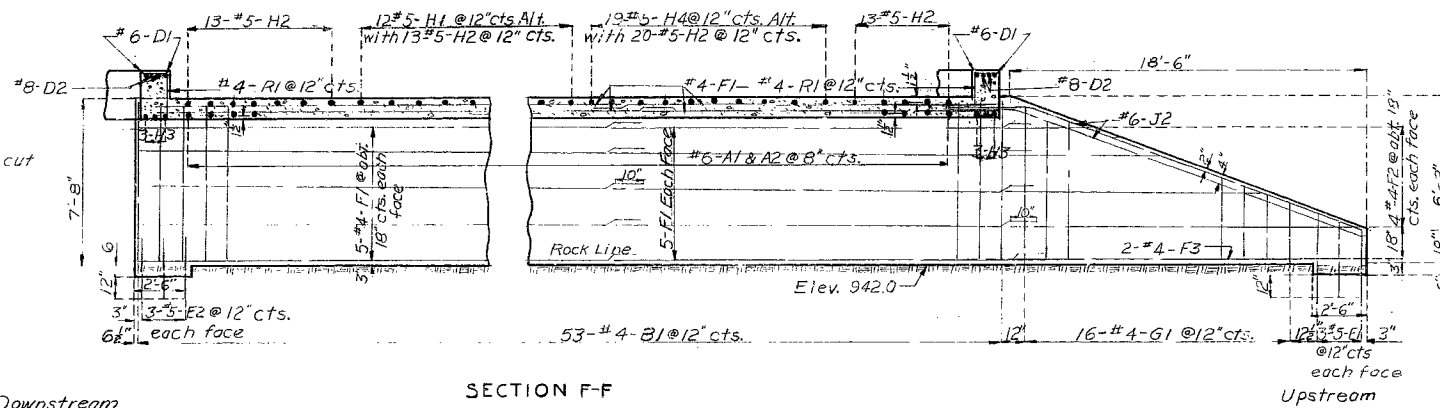
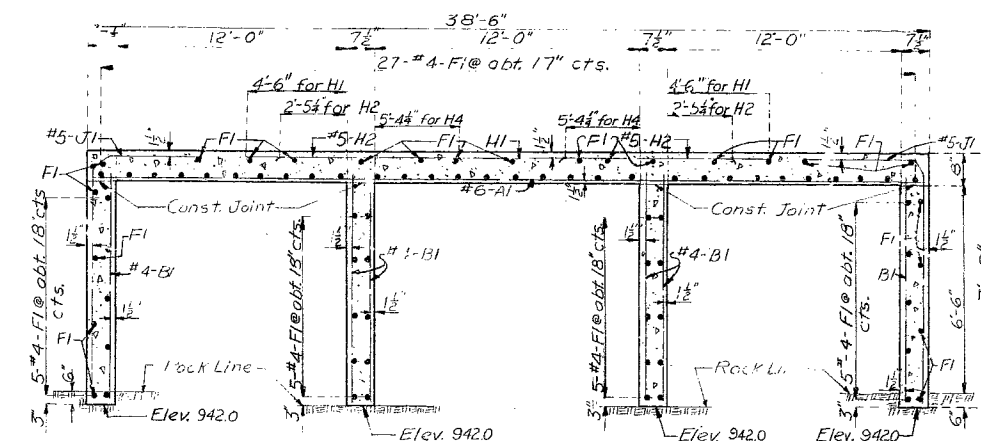
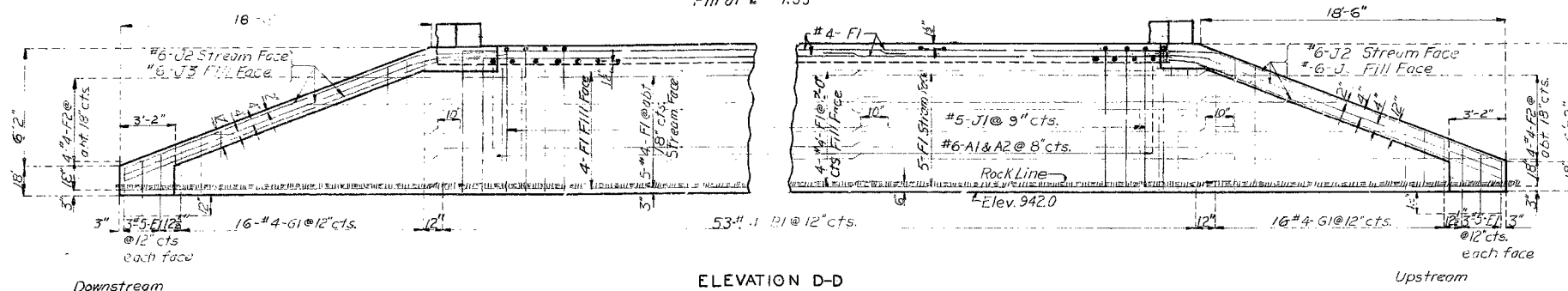


MISSOURI STATE HIGHWAY DEPARTMENT

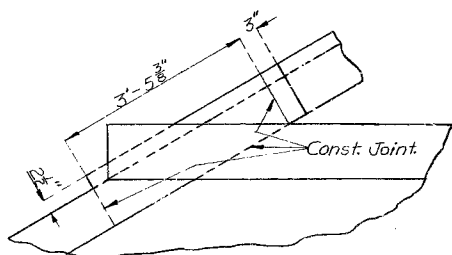
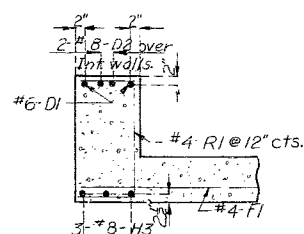
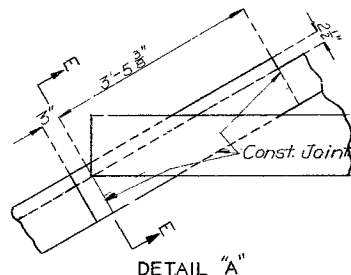
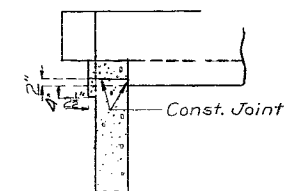
FED. ROAD DIST. NO.	STATE	FED. AID PROJ. NO.	FISCAL YEAR	SHEET NO.	TOTAL SHEETS
5	MO.	5-1045(3)	19		

Sta. 307+30
Elev. 951.0
Fill of 1.33'



Note: Near bar to be cut or bent in field as required.

Note: Holes to be drilled 12" into solid rock, and E1 and E2 bars grouted in.



COMPLETE BILL OF REINFORCING STEEL									
No.	Size	Length	Mark	Location	Cutting Diagrams & Bending Sketches				
23	#6	29'-9"	A1	Slab	4'-6"	2'-0"	5'-0"	4'-0"	2'-3"
72	#6	31'-6"	A2	"	4'-6"	2'-0"	5'-0"	4'-0"	2'-3"
318	#4	7'-3"	B1	Wall	4'-6"	2'-0"	5'-0"	4'-0"	2'-3"
9	#6	39'-6"	D1	Headwall	4'-6"	2'-0"	5'-0"	4'-0"	2'-3"
8	#8	12'-9"	D2	"	4'-6"	2'-0"	5'-0"	4'-0"	2'-3"
18	#5	5'-9"	E1	Wing	4'-6"	2'-0"	5'-0"	4'-0"	2'-3"
12	#5	3'-0"	E2	"	4'-6"	2'-0"	5'-0"	4'-0"	2'-3"
160	#1	26'-3"	F1	Slab & Wall	4'-6"	2'-0"	5'-0"	4'-0"	2'-3"
16	#4	23'-6"	F2	Wing	4'-6"	2'-0"	5'-0"	4'-0"	2'-3"
8	#4	19'-6"	F3	"	4'-6"	2'-0"	5'-0"	4'-0"	2'-3"
64	#4	9'-6"	G1	"	4'-6"	2'-0"	5'-0"	4'-0"	2'-3"
12	#5	22'-3"	H1	Slab	4'-6"	2'-0"	5'-0"	4'-0"	2'-3"
118	#5	6'-0"	H2	"	4'-6"	2'-0"	5'-0"	4'-0"	2'-3"
18	#5	27'-6"	H3	Headwall	4'-6"	2'-0"	5'-0"	4'-0"	2'-3"
38	#5	10'-6"	H4	Slab	4'-6"	2'-0"	5'-0"	4'-0"	2'-3"
124	#5	10'-0"	J1	Wing	4'-6"	2'-0"	5'-0"	4'-0"	2'-3"
20	#6	22'-6"	J2	Wing	4'-6"	2'-0"	5'-0"	4'-0"	2'-3"
12	#6	6'-0"	J3	"	4'-6"	2'-0"	5'-0"	4'-0"	2'-3"
152	#4	3'-3"	R1	Headwall	4'-6"	2'-0"	5'-0"	4'-0"	2'-3"

BRIDGE OVER ASHLOCK CREEK

STATE ROAD FROM ROUTE 5V SOUTH THRU CLIQUOT TO RTE. 58B
ABOUT 5.8 MILES S. OF FLEMINGTON
PROJECT NO. 5-1045(3) CSO STA. 306+91.50

POLK COUNTY

Drawn July 1955 by W.D.S.
Checked Aug. 1955 by H.J.K.

Note: This drawing is not to scale. Follow dimensions.

Sheet No. 2 of 2.

SEE FINAL PLANS BROWN-LINES

P-984

MISSOURI STATE HIGHWAY DEPARTMENT

FED. ROAD DIST. NO.	STATE	FED. AID PROJ. NO.	FISCAL YEAR	SHEET NO.	TOTAL SHEETS
5	MO.	5-1045(3)	1955	13	42

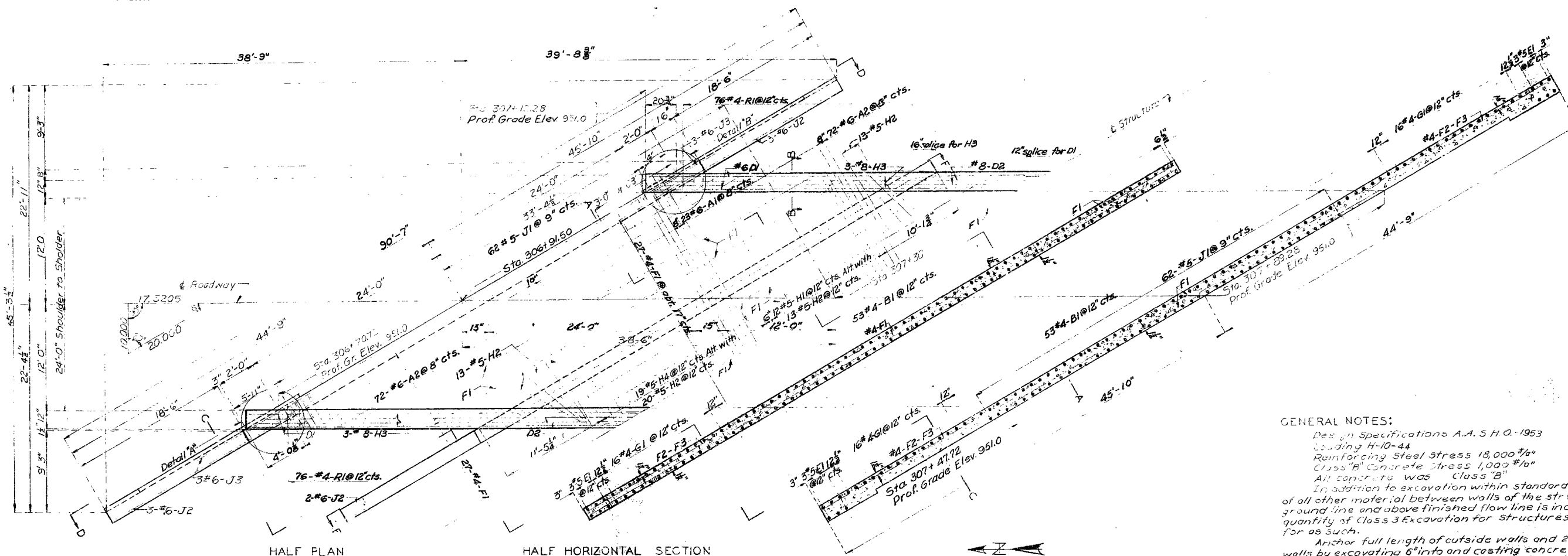
FINAL PLANS

FINAL QUANTITIES	
Class 3 Excavation for Structures	Cu. Yds. 152.0
Class "B" Concrete	Cu. Yds. 104.5
Reinforcing Steel	Lbs. 15,600

Note: Bottom of slab was built level at Elev. 949.0 and height of wall varied as necessary to extend wall on or into rock as specified.

Note: Channel was cleared to flow line above and below structure approximately as shown in End Elevation.

END ELEVATION



GENERAL NOTES:

Design Specifications A.A.S.H.O.-1953
 Loading H-10-44
 Reinforcing Steel Stress 18,000 ψ /in.
 Class "B" Concrete Stress 1,000 ψ /in.
 All concrete was Class "B"
 In addition to excavation within standard limits, the removal of all other material between walls of the structure below existing ground line and above finished flow line is included in estimated quantity of Class 3 Excavation for Structures and was paid for as such.
 Anchor full length of outside walls and 2'-6" of ends of inside walls by excavating 6" into and casting concrete against vertical faces of hard, solid, undisturbed rock. Remainder of inside walls were placed upon rock after all loose, soft, or disintegrated rock had been removed.

B.M. Elev. 950.90 "On N.W. Cor. Hdwl. Conc. Culv.
 R.L. Station 306+91.5

BRIDGE OVER ASHLOCK CREEK

STATE ROAD FROM ROUTE 5V SOUTH THRU CLIQUOT TO RTE. 58B
 ABOUT 5.8 MILES S. OF FLEMINGTON
 PROJECT NO. 5-1045(3) (S) STA. 306+91.50

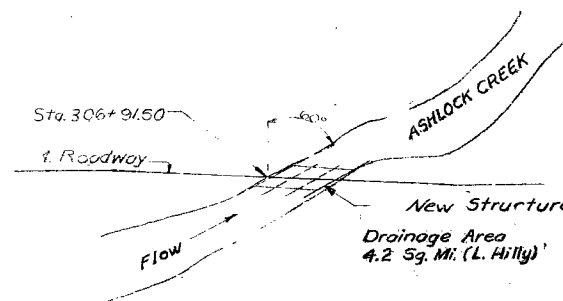
POLK COUNTY

SUBMITTED BY J. A. Williams DATE 9-7-1955
 APPROVED BY Roy M. Whitton DATE 9-7-1955

STD. C-1013

P-984

LOCATION SKETCH



Drawn July 1955 by H.J.K.
 Checked Aug. 1955 by H.J.K.

Note: This drawing is not to scale. Follow dimensions.

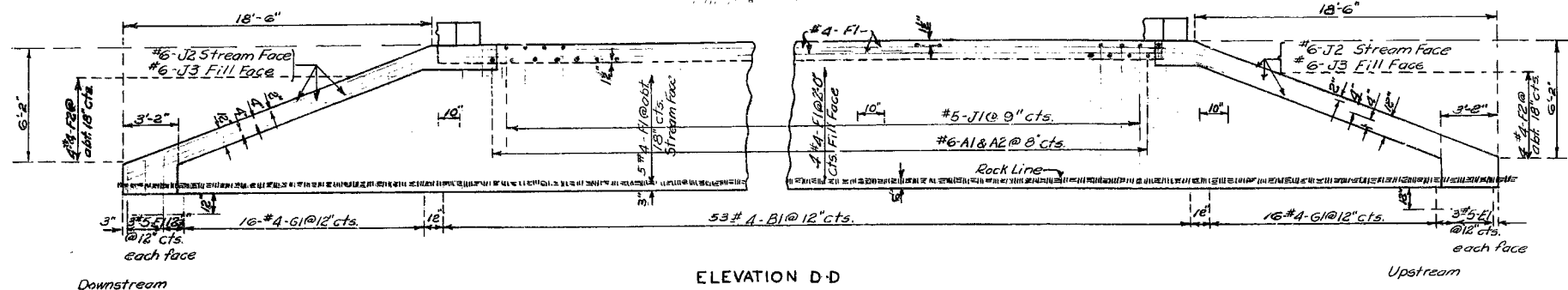
Sheet No. 1A of 2

FINAL PLANS

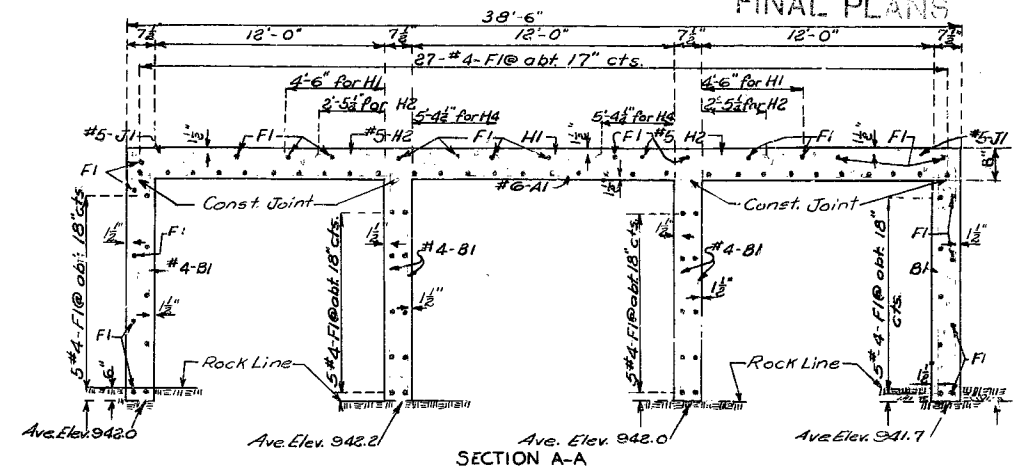
435

MISSOURI STATE HIGHWAY DEPARTMENT

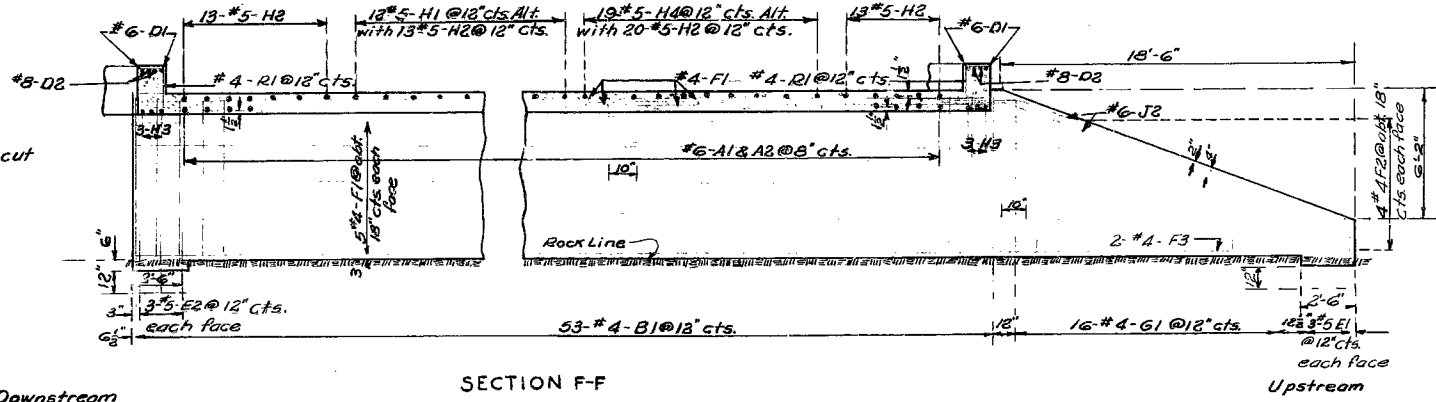
FED. ROAD DIST. NO.	STATE	FED. AID PROJ. NO.	FISCAL YEAR	SHEET NO.	TOTAL SHEETS
5	MO.	1045(3)	1957	19	21



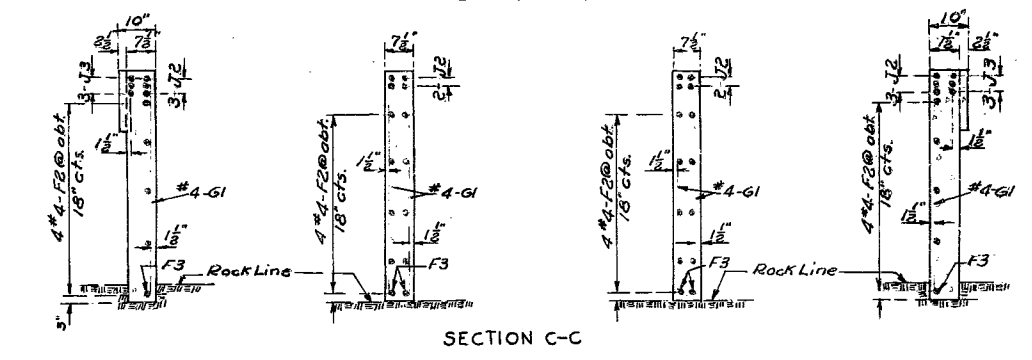
ELEVATION D-D



FINAL PLANS



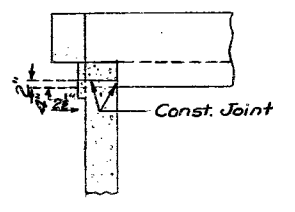
SECTION F-F



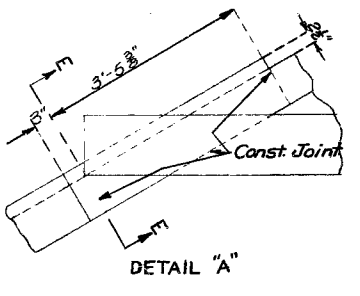
SECTION C-C

Note: Near bar was cut or bent in field as required.

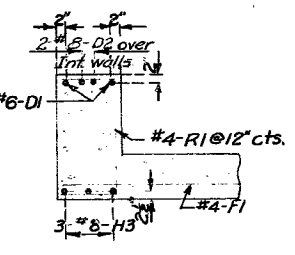
Note: Holes were drilled 12" into solid rock, and E1 and E2 bars grouted in.



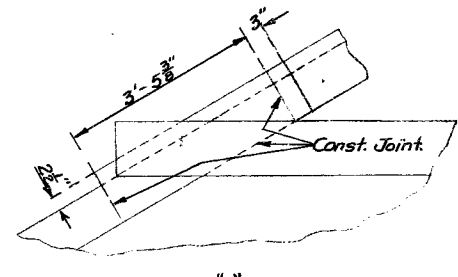
SECTION E-E
(Showing Details of Construction Joint)



DETAIL "A"



SECTION B-B



DETAIL "B"

COMPLETE BILL OF REINFORCING STEEL									
No.	Size	Length	Mark	Location	Cutting Diagrams & Bending Sketches				
23	#6	29'-9"	A1	Slab	4'-6"	2'-0"	4'-6"	5'-0"	4'-2'-3"
72	#6	31'-6"	A2	"	4'-6"	2'-0"	4'-6"	5'-0"	4'-2'-3"
318	#4	7'-3"	B1	Wall	4'-6"	2'-0"	4'-6"	5'-0"	4'-2'-3"
8	#6	39'-6"	D1	Headwall	4'-6"	2'-0"	4'-6"	5'-0"	4'-2'-3"
8	#6	12'-9"	D2	"	4'-6"	2'-0"	4'-6"	5'-0"	4'-2'-3"
18	#5	5'-9"	E1	Wing	4'-6"	2'-0"	4'-6"	5'-0"	4'-2'-3"
12	#5	3'-0"	E2	"	4'-6"	2'-0"	4'-6"	5'-0"	4'-2'-3"
160	#4	26'-3"	F1	Slab&Wall	4'-6"	2'-0"	4'-6"	5'-0"	4'-2'-3"
16	#4	23'-6"	F2	Wing	4'-6"	2'-0"	4'-6"	5'-0"	4'-2'-3"
8	#4	19'-6"	F3	"	4'-6"	2'-0"	4'-6"	5'-0"	4'-2'-3"
64	#4	9'-6"	G1	"	4'-6"	2'-0"	4'-6"	5'-0"	4'-2'-3"
12	#5	22'-3"	H1	Slab	4'-6"	2'-0"	4'-6"	5'-0"	4'-2'-3"
118	#5	6'-0"	H2	"	4'-6"	2'-0"	4'-6"	5'-0"	4'-2'-3"
18	#3	27'-6"	H3	Headwall	4'-6"	2'-0"	4'-6"	5'-0"	4'-2'-3"
38	#5	10'-6"	H4	Slab	4'-6"	2'-0"	4'-6"	5'-0"	4'-2'-3"
124	#5	10'-0"	J1	Wall	4'-6"	2'-0"	4'-6"	5'-0"	4'-2'-3"
20	#6	22'-6"	J2	Wing	4'-6"	2'-0"	4'-6"	5'-0"	4'-2'-3"
12	#6	6'-0"	J3	"	4'-6"	2'-0"	4'-6"	5'-0"	4'-2'-3"
152	#4	3'-3"	R1	Headwall	4'-6"	2'-0"	4'-6"	5'-0"	4'-2'-3"

BRIDGE OVER ASHLOCK CREEK

STATE ROAD FROM ROUTE 5V SOUTH THRU CLIQUOT TO RTE. 588
ABOUT 5.8 MILES S. OF FLEMINGTON
PROJECT NO. S-1045(3) CS 2) STA. 306+91.50

POLK COUNTY

Drawn July 1955 by M.D.S.
Checked Aug. 1955 by H.J.K.

Note: This drawing is not to scale. Follow dimensions.

Sheet No. 2A of 2

P-984

FINAL PLANS



Missouri Department of Transportation
Bridge Inventory and Inspection System
Structural Inventory & Appraisal Sheet

December 2, 2024
1:57:59pm

COUNTY : POLK BRIDGE : P0984 REVIEW STATUS : PENDING NBI STATUS : P
RECORD TYPE : ROUTE CARRIED 'ON' STRUCT RUN DATE : 4/4/2002 SUBMITTAL YEAR : 2001

GENERAL STRUCTURE INFORMATION			ROUTE DESIGNATION INFORMATION		
1	State	MISSOURI	5A	Record Type	ROUTE CARRIED 'ON' STRUCT
2	District	SW	5B	Route Signing Prefix	MO
3	County	POLK	5C	Designated Level of Service	MAINLINE
8	Federal ID No.	8020	5D	Route Number	00000
27	Year Built	1956	5E	Directional Suffix	NOT APPLICABLE
106	Year Reconstructed	0	7	Facility Carried	RT O
42A	Type of Service On	HIGHWAY	12	Base Hwy. Network	NO
21	Structure Maintenance	STATE HIGHWAY AGENCY	13A	LRS Inventory Route No.	
22	Structure Owner	STATE HIGHWAY AGENCY	13B	Subroute No.	
33	Br. Median Code	NO MEDIAN	20	Toll Status	ON FREE ROAD
37	Historical Significance	NOT ELIGIBLE FOR NR OF HP	26	Functional Classification	08-RURAL MINOR COLLECTOR
101	Parallel Struc Desg	NONE EXISTS	28A	Lanes on Structure	02
103	Temporary Structure	NOT TEMPORARY	100	STRAHNET Designation	RTE NOT A DEFENSE HWY
112	NBIS Bridge Length	YES	104	National Highway System	NOT ON NHS
			105	Federal Lands Highway	NOT APPLICABLE
			110	Designated Nat. Network	NO
STRUCTURE LOCATION INFORMATION			STRUCTURE TRAFFIC INFORMATION		
4	Place	FLEMINGTON	29	AADT	450
	Code	24598	30	AADT Year	2000
9	Location	S 32 T 35N R 23W	102	Direction of Traffic	2-WAY TRAFFIC
11	Milepoint	11.54 miles	109	AADT Truck Percent	10%
16	Latitude	37 D 44 M 24 S	114	Future AADT	720
17	Longitude	93 D 29 M 6 S	115	Future AADT Year	2022
UNDERRECORD INFORMATION			STRUCTURE GEOMETRIC INFORMATION		
6	Features Intersected	ASHLOCK CR	10	Inventory Rte. Vert. Clear	99 Ft. 99 In.
42B	Type of Service Under	WATERWAY	19	By pass Detour Length	24.80 miles
28B	Lanes Under Structure	00	32	Approach Roadway Width	22 Ft. 12 In.
54A	Vert. Clearance Ref.	N/A	34	Skew	0.00 Degrees
54B	Vert. Clearance	0 Ft. 0 In.	35	Struct. Flared	NO
55A	Rt. Lat Clear Ref.	N/A	47	Total Horiz. Clear	23 Ft. 11 In.
55B	Rt. Lat Clearance	0 Ft. 0 In.	48	Maximum Span Length	12 Ft. 2 In.
56	Left Lat Clearance	0 Ft. 0 In.	49	Structure Length	75 Ft. 2 In.
38	Navigation Control	PERMIT NOT REQ	50A	Left Curb/Sidewalk Width	0 Ft. 0 In.
39	Nav Vertical Clear	0 Ft. 0 In.	50B	Right Curb/Sidewalk Width	0 Ft. 0 In.
40	Nav Horizontal Clear	0 Ft. 0 In.	51	Curb to Curb Br. Width	23 Ft. 11 In.
111	Nav. Pier Protection		52	Deck Width (Out-Out)	25 Ft. 11 In.
116	Nav. Cl. Vert. Clear		53	Vert. Clearance Over Deck	99 Ft. 99 In.

Design_No = P0984



Missouri Department of Transportation
Bridge Inventory and Inspection System
Structural Inventory & Appraisal Sheet

December 2, 2024
1:57:59pm

COUNTY : POLK BRIDGE : P0984 REVIEW STATUS : PENDING NBI STATUS : P
RECORD TYPE : ROUTE CARRIED 'ON' STRUCT RUN DATE : 4/4/2002 SUBMITTAL YEAR : 2001

LOAD RATING AND POSTING INFORMATION			MATERIAL/CONSTRUCTION INFORMATION		
31	Design Load	H 10	43A	Main Struc. Mat type	CONCRETE CONTINUOUS
41	Structure Status	A - OPEN NO RESTRICTIONS	43B	Main struc Constr. Type	CULVERT
63	Oper. Rating Meth.	NO RATING ANALYSIS PERFMD	45	# of Main Spans	3
64	Operating Rating	55 Tons.	44A	Appr Struc. Mat type	
65	Inventory Rating Meth	NO RATING ANALYSIS PERFMD	44B	Appr Struc. Cnstr. type	
66	Inventory Rating	17 Tons.	46	# of Approach Span	0
70	Bridge Posting Code	=>LEGAL LOADS	107	Deck Mat/Constr.	NA
PROPOSED IMPROVEMENT INFORMATION			108A	Wear Surf Mat/Constr.	NA
Sufficiency Rating 62.5 Percent			108B	Membrane Mat/Constr.	NA
Deficiency Rating NOT APPLICABLE			108C	Deck Protect Mat/Constr.	NA
Funding Eligibility			CONDITION RATING INFORMATION		
75A	Proposed Work		58	Deck Cond. Rating	N
75B	Work Done By		59	Superstructure Cond. Rating	N
76	New Struc Length	0 Ft. 0 In.	60	Substructure Cond. Rating	N
94	Struc Improve Cost	\$ 0,000	61	Channel /Channel Protection Cond. Rating	6
95	Roadway Improve Cost	\$ 0,000	62	Culvert Cond. Rating	6
96	Total Project Cost	\$ 0,000	INSPECTION INFORMATION		
97	Year of Cost Estimates	0	90	Gen. Insp Date	11 / 01
APPRAISAL RATING INFORMATION			91	Gen. Insp. Frequency	24 Months
36A	Br. Rail App. Rating	MEETS ACCEPTBLE STND	92A	Frac. Critical Inspection	N Months
36B	Transition Rail App. Rating	MEETS ACCEPTBLE STND	93A	Frac. Critical Insp. Date	
36C	Approach Rail App. Rating	MEETS ACCEPTBLE STND	92B	Underwater Inspection	N Months
36D	Rail End Treat. App. Rating	MEETS ACCEPTBLE STND	93B	Underwater Insp. Date	
67	Struc Eval App. Rating	4	92C	Special Inspection	N Months
68	Deck Geometry App. Rating	4	93C	Special Inspection Date	
69	Underclearance App. Rating	N	BORDER BRIDGE INFORMATION		
71	Waterway Adeq. App. Rating	7	98	Neighboring State Code	
72	Approach Road App. Rating	8	98B	Neighboring State % Respon	
113	Scour Assess App. Rating	8	99	Neighboring State Struc. No.	
APPROVED POSTING INFORMATION			FIELD POSTING INFORMATION		
Approved Posting Category S-1			Field Posting Category S-1		
Ton1 Ton2 Ton3			Ton1 Ton2 Ton3		
Tonnage Values for Posting Sign			Tonnage Values for Posting Sign		
General Text for Posting Sign			General Text for Posting Sign		
NO POSTING REQUIRED			NO POSTING REQUIRED		

Design_No = P0984



Missouri Department of Transportation
Bridge Inventory and Inspection System
Structural Inventory & Appraisal Sheet

December 2, 2024
1:57:59pm

COUNTY : POLK BRIDGE : P0984 REVIEW STATUS : APPROVED NBI STATUS : P
RECORD TYPE : ROUTE CARRIED 'ON' STRUCT RUN DATE : 2/6/2006 SUBMITTAL YEAR : 2005

GENERAL STRUCTURE INFORMATION			ROUTE DESIGNATION INFORMATION		
1	State	MISSOURI	5A	Record Type	ROUTE CARRIED 'ON' STRUCT
2	District	SW	5B	Route Signing Prefix	MO
3	County	POLK	5C	Designated Level of Service	MAINLINE
8	Federal ID No.	8020	5D	Route Number	00000
27	Year Built	1956	5E	Directional Suffix	NOT APPLICABLE
106	Year Reconstructed	0	7	Facility Carried	RT O S
42A	Type of Service On	HIGHWAY	12	Base Hwy. Network	NO
21	Structure Maintenance	STATE HIGHWAY AGENCY	13A	LRS Inventory Route No.	
22	Structure Owner	STATE HIGHWAY AGENCY	13B	Subroute No.	
33	Br. Median Code	NO MEDIAN	20	Toll Status	ON FREE ROAD
37	Historical Significance	NOT ELIGIBLE FOR NR OF HP	26	Functional Classification	08-RURAL MINOR COLLECTOR
101	Parallel Struc Desg	NONE EXISTS	28A	Lanes on Structure	02
103	Temporary Structure	NOT TEMPORARY	100	STRAHNET Designation	RTE NOT A DEFENSE HWY
112	NBIS Bridge Length	YES	104	National Highway System	NOT ON NHS
			105	Federal Lands Highway	NOT APPLICABLE
			110	Designated Nat. Network	NO
STRUCTURE LOCATION INFORMATION			STRUCTURE TRAFFIC INFORMATION		
4	Place	FLEMINGTON	29	AADT	498
	Code	24598	30	AADT Year	2004
9	Location	S 32 T 35 N R 23 W	102	Direction of Traffic	2-WAY TRAFFIC
11	Milepoint	11.54 miles	109	AADT Truck Percent	10%
16	Latitude	37 D 44 M 24 S	114	Future AADT	796
17	Longitude	93 D 29 M 6 S	115	Future AADT Year	2026
UNDERRECORD INFORMATION			STRUCTURE GEOMETRIC INFORMATION		
6	Features Intersected	ASHLOCK CR	10	Inventory Rte. Vert. Clear	99 Ft. 99 In.
42B	Type of Service Under	WATERWAY	19	By pass Detour Length	24.80 miles
28B	Lanes Under Structure	00	32	Approach Roadway Width	22 Ft. 12 In.
54A	Vert. Clearance Ref.	N/A	34	Skew	60.00 Degrees
54B	Vert. Clearance	0 Ft. 0 In.	35	Struct. Flared	NO
55A	Rt. Lat Clear Ref.	N/A	47	Total Horiz. Clear	23 Ft. 11 In.
55B	Rt. Lat Clearance	0 Ft. 0 In.	48	Maximum Span Length	12 Ft. 2 In.
56	Left Lat Clearance	0 Ft. 0 In.	49	Structure Length	74 Ft. 6 In.
38	Navigation Control	PERMIT NOT REQ	50A	Left Curb/Sidewalk Width	0 Ft. 0 In.
39	Nav Vertical Clear	0 Ft. 0 In.	50B	Right Curb/Sidewalk Width	0 Ft. 0 In.
40	Nav Horizontal Clear	0 Ft. 0 In.	51	Curb to Curb Br. Width	23 Ft. 11 In.
111	Nav. Pier Protection		52	Deck Width (Out-Out)	25 Ft. 11 In.
116	Nav. Cl. Vert. Clear		53	Vert. Clearance Over Deck	99 Ft. 99 In.

Design_No = P0984



Missouri Department of Transportation
Bridge Inventory and Inspection System
Structural Inventory & Appraisal Sheet

December 2, 2024
1:57:59pm

COUNTY : POLK BRIDGE : P0984 REVIEW STATUS : APPROVED NBI STATUS : P
RECORD TYPE : ROUTE CARRIED 'ON' STRUCT RUN DATE : 2/6/2006 SUBMITTAL YEAR : 2005

LOAD RATING AND POSTING INFORMATION			MATERIAL/CONSTRUCTION INFORMATION		
31	Design Load	H 10	43A	Main Struc. Mat type	CONCRETE CONTINUOUS
41	Structure Status	A - OPEN NO RESTRICTIONS	43B	Main struc Constr. Type	CULVERT
63	Oper. Rating Meth.	NO RATING ANALYSIS PERFM	45	# of Main Spans	3
64	Operating Rating	55 Tons.	44A	Appr Struc. Mat type	
65	Inventory Rating Meth	NO RATING ANALYSIS PERFM	44B	Appr Struc. Cnstr. type	
66	Inventory Rating	17 Tons.	46	# of Approach Span	0
70	Bridge Posting Code	=>LEGAL LOADS	107	Deck Mat/Constr.	NA
PROPOSED IMPROVEMENT INFORMATION			108A	Wear Surf Mat/Constr.	NA
Sufficiency Rating 62.4 Percent			108B	Membrane Mat/Constr.	NA
Deficiency Rating NOT DEFICIENT			108C	Deck Protect Mat/Constr.	NA
Funding Eligibility			CONDITION RATING INFORMATION		
75A	Proposed Work		58	Deck Cond. Rating	N
75B	Work Done By		59	Superstructure Cond. Rating	N
76	New Struc Length	0 Ft. 0 In.	60	Substructure Cond. Rating	N
94	Struc Improve Cost	\$ 0,000	61	Channel /Channel Protection Cond. Rating	6
95	Roadway Improve Cost	\$ 0,000	62	Culvert Cond. Rating	6
96	Total Project Cost	\$ 0,000	INSPECTION INFORMATION		
97	Year of Cost Estimates	0	90	Gen. Insp Date	11 / 05
APPRAISAL RATING INFORMATION			91	Gen. Insp. Frequency	24 Months
36A	Br. Rail App. Rating	MEETS ACCEPTBLE STND	92A	Frac. Critical Inspection	N Months
36B	Transition Rail App. Rating	MEETS ACCEPTBLE STND	93A	Frac. Critical Insp. Date	
36C	Approach Rail App. Rating	MEETS ACCEPTBLE STND	92B	Underwater Inspection	N Months
36D	Rail End Treat. App. Rating	MEETS ACCEPTBLE STND	93B	Underwater Insp. Date	
67	Struc Eval App. Rating	4	92C	Special Inspection	N Months
68	Deck Geometry App. Rating	4	93C	Special Inspection Date	
69	Underclearance App. Rating	N	BORDER BRIDGE INFORMATION		
71	Waterway Adeq. App. Rating	7	98	Neighboring State Code	
72	Approach Road App. Rating	8	98B	Neighboring State % Respon	
113	Scour Assess App. Rating	8	99	Neighboring State Struc. No.	
APPROVED POSTING INFORMATION			FIELD POSTING INFORMATION		
Approved Posting Category S-1			Field Posting Category S-1		
Ton1 Ton2 Ton3			Ton1 Ton2 Ton3		
Tonnage Values for Posting Sign			Tonnage Values for Posting Sign		
General Text for Posting Sign			General Text for Posting Sign		
NO POSTING REQUIRED			NO POSTING REQUIRED		

Design_No = P0984



Missouri Department of Transportation
Bridge Inventory and Inspection System
Structural Inventory & Appraisal Sheet

December 2, 2024
1:57:59pm

COUNTY : POLK BRIDGE : P0984 REVIEW STATUS : APPROVED NBI STATUS : P
RECORD TYPE : ROUTE CARRIED 'ON' STRUCT RUN DATE : 1/4/2013 SUBMITTAL YEAR : 2012

GENERAL STRUCTURE INFORMATION			ROUTE DESIGNATION INFORMATION		
1	State	MISSOURI	5A	Record Type	ROUTE CARRIED 'ON' STRUCT
2	District	SW	5B	Route Signing Prefix	MO
3	County	POLK	5C	Designated Level of Service	MAINLINE
8	Federal ID No.	8020	5D	Route Number	00000
27	Year Built	1956	5E	Directional Suffix	NOT APPLICABLE
106	Year Reconstructed	0	7	Facility Carried	RT O S
42A	Type of Service On	HIGHWAY	12	Base Hwy. Network	NO
21	Structure Maintenance	STATE HIGHWAY AGENCY	13A	LRS Inventory Route No.	
22	Structure Owner	STATE HIGHWAY AGENCY	13B	Subroute No.	
33	Br. Median Code	NO MEDIAN	20	Toll Status	ON FREE ROAD
37	Historical Significance	NOT ELIGIBLE FOR NR OF HP	26	Functional Classification	08-RURAL MINOR COLLECTOR
101	Parallel Struc Desg	NONE EXISTS	28A	Lanes on Structure	02
103	Temporary Structure	NOT TEMPORARY	100	STRAHNET Designation	RTE NOT A DEFENSE HWY
112	NBIS Bridge Length	YES	104	National Highway System	NOT ON NHS
			105	Federal Lands Highway	NOT APPLICABLE
			110	Designated Nat. Network	NO
STRUCTURE LOCATION INFORMATION			STRUCTURE TRAFFIC INFORMATION		
4	Place	FLEMINGTON	29	AADT	410
	Code	24598	30	AADT Year	2011
9	Location	S 32 T 35 N R 23 W	102	Direction of Traffic	2-WAY TRAFFIC
11	Milepoint	11.46 miles	109	AADT Truck Percent	12%
16	Latitude	37 D 44 M 27 S	114	Future AADT	656
17	Longitude	93 D 29 M 9 S	115	Future AADT Year	2033
UNDERRECORD INFORMATION			STRUCTURE GEOMETRIC INFORMATION		
6	Features Intersected	ASHLOCK CR	10	Inventory Rte. Vert. Clear	99 Ft. 99 In.
42B	Type of Service Under	WATERWAY	19	By pass Detour Length	24.80 miles
28B	Lanes Under Structure	00	32	Approach Roadway Width	22 Ft. 12 In.
54A	Vert. Clearance Ref.	N/A	34	Skew	60.00 Degrees
54B	Vert. Clearance	0 Ft. 0 In.	35	Struct. Flared	NO
55A	Rt. Lat Clear Ref.	N/A	47	Total Horiz. Clear	23 Ft. 11 In.
55B	Rt. Lat Clearance	0 Ft. 0 In.	48	Maximum Span Length	12 Ft. 2 In.
56	Left Lat Clearance	0 Ft. 0 In.	49	Structure Length	74 Ft. 6 In.
38	Navigation Control	PERMIT NOT REQ	50A	Left Curb/Sidewalk Width	0 Ft. 0 In.
39	Nav Vertical Clear	0 Ft. 0 In.	50B	Right Curb/Sidewalk Width	0 Ft. 0 In.
40	Nav Horizontal Clear	0 Ft. 0 In.	51	Curb to Curb Br. Width	23 Ft. 11 In.
111	Nav. Pier Protection		52	Deck Width (Out-Out)	25 Ft. 11 In.
116	Nav. Cl. Vert. Clear		53	Vert. Clearance Over Deck	99 Ft. 99 In.

Design_No = P0984



Missouri Department of Transportation
Bridge Inventory and Inspection System
Structural Inventory & Appraisal Sheet

December 2, 2024
1:57:59pm

COUNTY : POLK BRIDGE : P0984 REVIEW STATUS : APPROVED NBI STATUS : P
RECORD TYPE : ROUTE CARRIED 'ON' STRUCT RUN DATE : 1/4/2013 SUBMITTAL YEAR : 2012

LOAD RATING AND POSTING INFORMATION			MATERIAL/CONSTRUCTION INFORMATION		
31	Design Load	H 10	43A	Main Struc. Mat type	CONCRETE CONTINUOUS
41	Structure Status	A - OPEN NO RESTRICTIONS	43B	Main struc Constr. Type	CULVERT
63	Oper. Rating Meth.	NO RATING ANALYSIS PERFORMED	45	# of Main Spans	3
64	Operating Rating	55 Tons.	44A	Appr Struc. Mat type	
65	Inventory Rating Meth	NO RATING ANALYSIS PERFORMED	44B	Appr Struc. Cnstr. type	
66	Inventory Rating	17 Tons.	46	# of Approach Span	0
70	Bridge Posting Code	=>LEGAL LOADS	107	Deck Mat/Constr.	NA
PROPOSED IMPROVEMENT INFORMATION			108A	Wear Surf Mat/Constr.	NA
Sufficiency Rating 62.6 Percent			108B	Membrane Mat/Constr.	NA
Deficiency Rating NOT DEFICIENT			108C	Deck Protect Mat/Constr.	NA
Funding Eligibility			CONDITION RATING INFORMATION		
75A	Proposed Work		58	Deck Cond. Rating	N
75B	Work Done By		59	Superstructure Cond. Rating	N
76	New Struc Length	0 Ft. 0 In.	60	Substructure Cond. Rating	N
94	Struc Improve Cost	\$ 0,000	61	Channel /Channel Protection Cond. Rating	6
95	Roadway Improve Cost	\$ 0,000	62	Culvert Cond. Rating	6
96	Total Project Cost	\$ 0,000	INSPECTION INFORMATION		
97	Year of Cost Estimates	0	90	Gen. Insp Date	12 / 11
APPRAISAL RATING INFORMATION			91	Gen. Insp. Frequency	24 Months
36A	Br. Rail App. Rating	NOT APPLICABLE	92A	Frac. Critical Inspection	N Months
36B	Transition Rail App. Rating	NOT APPLICABLE	93A	Frac. Critical Insp. Date	
36C	Approach Rail App. Rating	NOT APPLICABLE	92B	Underwater Inspection	N Months
36D	Rail End Treat. App. Rating	NOT APPLICABLE	93B	Underwater Insp. Date	
67	Struc Eval App. Rating	4	92C	Special Inspection	N Months
68	Deck Geometry App. Rating	4	93C	Special Inspection Date	
69	Underclearance App. Rating	N	BORDER BRIDGE INFORMATION		
71	Waterway Adeq. App. Rating	7	98	Neighboring State Code	
72	Approach Road App. Rating	8	98B	Neighboring State % Respon	
113	Scour Assess App. Rating	8	99	Neighboring State Struc. No.	
APPROVED POSTING INFORMATION			FIELD POSTING INFORMATION		
Approved Posting Category S-1			Field Posting Category S-1		
Ton1 Ton2 Ton3			Ton1 Ton2 Ton3		
Tonnage Values for Posting Sign			Tonnage Values for Posting Sign		
General Text for Posting Sign			General Text for Posting Sign		
NO POSTING REQUIRED			NO POSTING REQUIRED		

Design_No = P0984



Missouri Department of Transportation
Bridge Inventory and Inspection System
Structural Inventory & Appraisal Sheet

December 2, 2024
1:57:59pm

COUNTY : POLK BRIDGE : P0984 REVIEW STATUS : APPROVED NBI STATUS : P
RECORD TYPE : ROUTE CARRIED 'ON' STRUCT RUN DATE : 2/16/2007 SUBMITTAL YEAR : 2006

GENERAL STRUCTURE INFORMATION			ROUTE DESIGNATION INFORMATION		
1	State	MISSOURI	5A	Record Type	ROUTE CARRIED 'ON' STRUCT
2	District	SW	5B	Route Signing Prefix	MO
3	County	POLK	5C	Designated Level of Service	MAINLINE
8	Federal ID No.	8020	5D	Route Number	00000
27	Year Built	1956	5E	Directional Suffix	NOT APPLICABLE
106	Year Reconstructed	0	7	Facility Carried	RT O S
42A	Type of Service On	HIGHWAY	12	Base Hwy. Network	NO
21	Structure Maintenance	STATE HIGHWAY AGENCY	13A	LRS Inventory Route No.	
22	Structure Owner	STATE HIGHWAY AGENCY	13B	Subroute No.	
33	Br. Median Code	NO MEDIAN	20	Toll Status	ON FREE ROAD
37	Historical Significance	NOT ELIGIBLE FOR NR OF HP	26	Functional Classification	08-RURAL MINOR COLLECTOR
101	Parallel Struc Desg	NONE EXISTS	28A	Lanes on Structure	02
103	Temporary Structure	NOT TEMPORARY	100	STRAHNET Designation	RTE NOT A DEFENSE HWY
112	NBIS Bridge Length	YES	104	National Highway System	NOT ON NHS
			105	Federal Lands Highway	NOT APPLICABLE
			110	Designated Nat. Network	NO
STRUCTURE LOCATION INFORMATION			STRUCTURE TRAFFIC INFORMATION		
4	Place	FLEMINGTON	29	AADT	454
	Code	24598	30	AADT Year	2005
9	Location	S 32 T 35 N R 23 W	102	Direction of Traffic	2-WAY TRAFFIC
11	Milepoint	11.46 miles	109	AADT Truck Percent	10%
16	Latitude	37 D 44 M 24 S	114	Future AADT	726
17	Longitude	93 D 29 M 6 S	115	Future AADT Year	2027
UNDERRECORD INFORMATION			STRUCTURE GEOMETRIC INFORMATION		
6	Features Intersected	ASHLOCK CR	10	Inventory Rte. Vert. Clear	99 Ft. 99 In.
42B	Type of Service Under	WATERWAY	19	By pass Detour Length	24.80 miles
28B	Lanes Under Structure	00	32	Approach Roadway Width	22 Ft. 12 In.
54A	Vert. Clearance Ref.	N/A	34	Skew	60.00 Degrees
54B	Vert. Clearance	0 Ft. 0 In.	35	Struct. Flared	NO
55A	Rt. Lat Clear Ref.	N/A	47	Total Horiz. Clear	23 Ft. 11 In.
55B	Rt. Lat Clearance	0 Ft. 0 In.	48	Maximum Span Length	12 Ft. 2 In.
56	Left Lat Clearance	0 Ft. 0 In.	49	Structure Length	74 Ft. 6 In.
38	Navigation Control	PERMIT NOT REQ	50A	Left Curb/Sidewalk Width	0 Ft. 0 In.
39	Nav Vertical Clear	0 Ft. 0 In.	50B	Right Curb/Sidewalk Width	0 Ft. 0 In.
40	Nav Horizontal Clear	0 Ft. 0 In.	51	Curb to Curb Br. Width	23 Ft. 11 In.
111	Nav. Pier Protection		52	Deck Width (Out-Out)	25 Ft. 11 In.
116	Nav. Cl. Vert. Clear		53	Vert. Clearance Over Deck	99 Ft. 99 In.

Design_No = P0984



Missouri Department of Transportation
Bridge Inventory and Inspection System
Structural Inventory & Appraisal Sheet

December 2, 2024
1:57:59pm

COUNTY : POLK BRIDGE : P0984 REVIEW STATUS : APPROVED NBI STATUS : P
RECORD TYPE : ROUTE CARRIED 'ON' STRUCT RUN DATE : 2/16/2007 SUBMITTAL YEAR : 2006

LOAD RATING AND POSTING INFORMATION			MATERIAL/CONSTRUCTION INFORMATION		
31	Design Load	H 10	43A	Main Struc. Mat type	CONCRETE CONTINUOUS
41	Structure Status	A - OPEN NO RESTRICTIONS	43B	Main struc Constr. Type	CULVERT
63	Oper. Rating Meth.	NO RATING ANALYSIS PERFM	45	# of Main Spans	3
64	Operating Rating	55 Tons.	44A	Appr Struc. Mat type	
65	Inventory Rating Meth	NO RATING ANALYSIS PERFM	44B	Appr Struc. Cnstr. type	
66	Inventory Rating	17 Tons.	46	# of Approach Span	0
70	Bridge Posting Code	=>LEGAL LOADS	107	Deck Mat/Constr.	NA
			108A	Wear Surf Mat/Constr.	NA
			108B	Membrane Mat/Constr.	NA
			108C	Deck Protect Mat/Constr.	NA
PROPOSED IMPROVEMENT INFORMATION			CONDITION RATING INFORMATION		
Sufficiency Rating		62.5 Percent	58	Deck Cond. Rating	N
Deficiency Rating		NOT DEFICIENT	59	Superstructure Cond. Rating	N
Funding Eligibility			60	Substructure Cond. Rating	N
75A	Proposed Work		61	Channel /Channel Protection Cond. Rating	6
75B	Work Done By		62	Culvert Cond. Rating	6
76	New Struc Length	0 Ft. 0 In.	INSPECTION INFORMATION		
94	Struc Improve Cost	\$ 0,000	90	Gen. Insp Date	11 / 05
95	Roadway Improve Cost	\$ 0,000	91	Gen. Insp. Frequency	24 Months
96	Total Project Cost	\$ 0,000	92A	Frac. Critical Inspection	N Months
97	Year of Cost Estimates	0	93A	Frac. Critical Insp. Date	
APPRAISAL RATING INFORMATION			92B	Underwater Inspection	N Months
36A	Br. Rail App. Rating	MEETS ACCEPTBLE STND	93B	Underwater Insp. Date	
36B	Transition Rail App. Rating	MEETS ACCEPTBLE STND	92C	Special Inspection	N Months
36C	Approach Rail App. Rating	MEETS ACCEPTBLE STND	93C	Special Inspection Date	
36D	Rail End Treat. App. Rating	MEETS ACCEPTBLE STND	BORDER BRIDGE INFORMATION		
67	Struc Eval App. Rating	4	98	Neighboring State Code	
68	Deck Geometry App. Rating	4	98B	Neighboring State % Respon	
69	Underclearance App. Rating	N	99	Neighboring State Struc. No.	
71	Waterway Adeq. App. Rating	7	APPROVED POSTING INFORMATION		
72	Approach Road App. Rating	8	FIELD POSTING INFORMATION		
113	Scour Assess App. Rating	8			
APPROVED POSTING INFORMATION			FIELD POSTING INFORMATION		
Approved Posting Category S-1			Field Posting Category S-1		
Ton1 Ton2 Ton3			Ton1 Ton2 Ton3		
Tonnage Values for Posting Sign			Tonnage Values for Posting Sign		
General Text for Posting Sign			General Text for Posting Sign		
NO POSTING REQUIRED			NO POSTING REQUIRED		

Design_No = P0984



Missouri Department of Transportation
Bridge Inventory and Inspection System
Structural Inventory & Appraisal Sheet

December 2, 2024
1:57:59pm

COUNTY : POLK BRIDGE : P0984 REVIEW STATUS : APPROVED NBI STATUS : P
RECORD TYPE : ROUTE CARRIED 'ON' STRUCT RUN DATE : 12/3/2014 SUBMITTAL YEAR : 2014

GENERAL STRUCTURE INFORMATION			ROUTE DESIGNATION INFORMATION		
1	State	MISSOURI	5A	Record Type	ROUTE CARRIED 'ON' STRUCT
2	District	SW	5B	Route Signing Prefix	MO
3	County	POLK	5C	Designated Level of Service	MAINLINE
8	Federal ID No.	8020	5D	Route Number	00000
27	Year Built	1956	5E	Directional Suffix	NOT APPLICABLE
106	Year Reconstructed	0	7	Facility Carried	RT O S
42A	Type of Service On	HIGHWAY	12	Base Hwy. Network	NO
21	Structure Maintenance	STATE HIGHWAY AGENCY	13A	LRS Inventory Route No.	
22	Structure Owner	STATE HIGHWAY AGENCY	13B	Subroute No.	
33	Br. Median Code	NO MEDIAN	20	Toll Status	ON FREE ROAD
37	Historical Significance	NOT ELIGIBLE FOR NR OF HP	26	Functional Classification	08-RURAL MINOR COLLECTOR
101	Parallel Struc Desg	NONE EXISTS	28A	Lanes on Structure	02
103	Temporary Structure	NOT TEMPORARY	100	STRAHNET Designation	RTE NOT A DEFENSE HWY
112	NBIS Bridge Length	YES	104	National Highway System	NOT ON NHS
			105	Federal Lands Highway	NOT APPLICABLE
			110	Designated Nat. Network	NO
STRUCTURE LOCATION INFORMATION			STRUCTURE TRAFFIC INFORMATION		
4	Place	FLEMINGTON	29	AADT	362
	Code	24598	30	AADT Year	2013
9	Location	S 32 T 35 N R 23 W	102	Direction of Traffic	2-WAY TRAFFIC
11	Milepoint	11.46 miles	109	AADT Truck Percent	11%
16	Latitude	37 D 44 M 27 S	114	Future AADT	579
17	Longitude	93 D 29 M 9 S	115	Future AADT Year	2034
UNDERRECORD INFORMATION			STRUCTURE GEOMETRIC INFORMATION		
6	Features Intersected	ASHLOCK CR	10	Inventory Rte. Vert. Clear	99 Ft. 99 In.
42B	Type of Service Under	WATERWAY	19	By pass Detour Length	24.80 miles
28B	Lanes Under Structure	00	32	Approach Roadway Width	22 Ft. 12 In.
54A	Vert. Clearance Ref.	N/A	34	Skew	60.00 Degrees
54B	Vert. Clearance	0 Ft. 0 In.	35	Struct. Flared	NO
55A	Rt. Lat Clear Ref.	N/A	47	Total Horiz. Clear	23 Ft. 11 In.
55B	Rt. Lat Clearance	0 Ft. 0 In.	48	Maximum Span Length	12 Ft. 2 In.
56	Left Lat Clearance	0 Ft. 0 In.	49	Structure Length	74 Ft. 6 In.
38	Navigation Control	PERMIT NOT REQ	50A	Left Curb/Sidewalk Width	0 Ft. 0 In.
39	Nav Vertical Clear	0 Ft. 0 In.	50B	Right Curb/Sidewalk Width	0 Ft. 0 In.
40	Nav Horizontal Clear	0 Ft. 0 In.	51	Curb to Curb Br. Width	23 Ft. 11 In.
111	Nav. Pier Protection		52	Deck Width (Out-Out)	25 Ft. 11 In.
116	Nav. Cl. Vert. Clear		53	Vert. Clearance Over Deck	99 Ft. 99 In.

Design_No = P0984



Missouri Department of Transportation
Bridge Inventory and Inspection System
Structural Inventory & Appraisal Sheet

December 2, 2024
1:57:59pm

COUNTY : POLK BRIDGE : P0984 REVIEW STATUS : APPROVED NBI STATUS : P
RECORD TYPE : ROUTE CARRIED 'ON' STRUCT RUN DATE : 12/3/2014 SUBMITTAL YEAR : 2014

LOAD RATING AND POSTING INFORMATION			MATERIAL/CONSTRUCTION INFORMATION		
31	Design Load	H 10	43A	Main Struc. Mat type	CONCRETE CONTINUOUS
41	Structure Status	A - OPEN NO RESTRICTIONS	43B	Main struc Constr. Type	CULVERT
63	Oper. Rating Meth.	NO RATING ANALYSIS PERFORMED	45	# of Main Spans	3
64	Operating Rating	55 Tons.	44A	Appr Struc. Mat type	
65	Inventory Rating Meth	NO RATING ANALYSIS PERFORMED	44B	Appr Struc. Cnstr. type	
66	Inventory Rating	17 Tons.	46	# of Approach Span	0
70	Bridge Posting Code	=>LEGAL LOADS	107	Deck Mat/Constr.	NA
PROPOSED IMPROVEMENT INFORMATION			108A	Wear Surf Mat/Constr.	NA
Sufficiency Rating 63.8 Percent			108B	Membrane Mat/Constr.	NA
Deficiency Rating NOT DEFICIENT			108C	Deck Protect Mat/Constr.	NA
Funding Eligibility			CONDITION RATING INFORMATION		
75A	Proposed Work		58	Deck Cond. Rating	N
75B	Work Done By		59	Superstructure Cond. Rating	N
76	New Struc Length	0 Ft. 0 In.	60	Substructure Cond. Rating	N
94	Struc Improve Cost	\$ 0,000	61	Channel /Channel Protection Cond. Rating	6
95	Roadway Improve Cost	\$ 0,000	62	Culvert Cond. Rating	6
96	Total Project Cost	\$ 0,000	INSPECTION INFORMATION		
97	Year of Cost Estimates	0	90	Gen. Insp Date	12 / 13
APPRAISAL RATING INFORMATION			91	Gen. Insp. Frequency	24 Months
36A	Br. Rail App. Rating	NOT APPLICABLE	92A	Frac. Critical Inspection	N Months
36B	Transition Rail App. Rating	NOT APPLICABLE	93A	Frac. Critical Insp. Date	
36C	Approach Rail App. Rating	NOT APPLICABLE	92B	Underwater Inspection	N Months
36D	Rail End Treat. App. Rating	NOT APPLICABLE	93B	Underwater Insp. Date	
67	Struc Eval App. Rating	4	92C	Special Inspection	N Months
68	Deck Geometry App. Rating	5	93C	Special Inspection Date	
69	Underclearance App. Rating	N	BORDER BRIDGE INFORMATION		
71	Waterway Adeq. App. Rating	7	98	Neighboring State Code	
72	Approach Road App. Rating	8	98B	Neighboring State % Respon	
113	Scour Assess App. Rating	8	99	Neighboring State Struc. No.	
APPROVED POSTING INFORMATION			FIELD POSTING INFORMATION		
Approved Posting Category S-1			Field Posting Category S-1		
Ton1 Ton2 Ton3			Ton1 Ton2 Ton3		
Tonnage Values for Posting Sign			Tonnage Values for Posting Sign		
General Text for Posting Sign			General Text for Posting Sign		
NO POSTING REQUIRED			NO POSTING REQUIRED		

Design_No = P0984



Missouri Department of Transportation
Bridge Inventory and Inspection System
Structural Inventory & Appraisal Sheet

December 2, 2024
1:57:59pm

COUNTY : POLK BRIDGE : P0984 REVIEW STATUS : APPROVED NBI STATUS : P
RECORD TYPE : ROUTE CARRIED 'ON' STRUCT RUN DATE : 1/31/2019 SUBMITTAL YEAR : 2018

GENERAL STRUCTURE INFORMATION			ROUTE DESIGNATION INFORMATION		
1	State	MISSOURI	5A	Record Type	ROUTE CARRIED 'ON' STRUCT
2	District	SW	5B	Route Signing Prefix	MO
3	County	POLK	5C	Designated Level of Service	MAINLINE
8	Federal ID No.	8020	5D	Route Number	00000
27	Year Built	1956	5E	Directional Suffix	NOT APPLICABLE
106	Year Reconstructed	0	7	Facility Carried	RT O S
42A	Type of Service On	HIGHWAY	12	Base Hwy. Network	NO
21	Structure Maintenance	STATE HIGHWAY AGENCY	13A	LRS Inventory Route No.	
22	Structure Owner	STATE HIGHWAY AGENCY	13B	Subroute No.	
33	Br. Median Code	NO MEDIAN	20	Toll Status	ON FREE ROAD
37	Historical Significance	NOT ELIGIBLE FOR NR OF HP	26	Functional Classification	08-RURAL MINOR COLLECTOR
101	Parallel Struc Desg	NONE EXISTS	28A	Lanes on Structure	02
103	Temporary Structure	NOT TEMPORARY	100	STRAHNET Designation	RTE NOT A DEFENSE HWY
112	NBIS Bridge Length	YES	104	National Highway System	NOT ON NHS
			105	Federal Lands Highway	NOT APPLICABLE
			110	Designated Nat. Network	NO
STRUCTURE LOCATION INFORMATION			STRUCTURE TRAFFIC INFORMATION		
4	Place	FLEMINGTON	29	AADT	595
	Code	24598	30	AADT Year	2018
9	Location	S 32 T 35 N R 23 W	102	Direction of Traffic	2-WAY TRAFFIC
11	Milepoint	11.46 miles	109	AADT Truck Percent	9%
16	Latitude	37 D 44 M 27 S	114	Future AADT	952
17	Longitude	93 D 29 M 9 S	115	Future AADT Year	2038
UNDERRECORD INFORMATION			STRUCTURE GEOMETRIC INFORMATION		
6	Features Intersected	ASHLOCK CR	10	Inventory Rte. Vert. Clear	99 Ft. 99 In.
42B	Type of Service Under	WATERWAY	19	By pass Detour Length	24.80 miles
28B	Lanes Under Structure	00	32	Approach Roadway Width	22 Ft. 12 In.
54A	Vert. Clearance Ref.	N/A	34	Skew	60.00 Degrees
54B	Vert. Clearance	0 Ft. 0 In.	35	Struct. Flared	NO
55A	Rt. Lat Clear Ref.	N/A	47	Total Horiz. Clear	23 Ft. 11 In.
55B	Rt. Lat Clearance	0 Ft. 0 In.	48	Maximum Span Length	12 Ft. 2 In.
56	Left Lat Clearance	0 Ft. 0 In.	49	Structure Length	74 Ft. 6 In.
38	Navigation Control	PERMIT NOT REQ	50A	Left Curb/Sidewalk Width	0 Ft. 0 In.
39	Nav Vertical Clear	0 Ft. 0 In.	50B	Right Curb/Sidewalk Width	0 Ft. 0 In.
40	Nav Horizontal Clear	0 Ft. 0 In.	51	Curb to Curb Br. Width	23 Ft. 11 In.
111	Nav. Pier Protection		52	Deck Width (Out-Out)	25 Ft. 11 In.
116	Nav. Cl. Vert. Clear		53	Vert. Clearance Over Deck	99 Ft. 99 In.

Design_No = P0984



Missouri Department of Transportation
Bridge Inventory and Inspection System
Structural Inventory & Appraisal Sheet

December 2, 2024
1:57:59pm

COUNTY : POLK BRIDGE : P0984 REVIEW STATUS : APPROVED NBI STATUS : P
RECORD TYPE : ROUTE CARRIED 'ON' STRUCT RUN DATE : 1/31/2019 SUBMITTAL YEAR : 2018

LOAD RATING AND POSTING INFORMATION			MATERIAL/CONSTRUCTION INFORMATION		
31	Design Load	H 10	43A	Main Struc. Mat type	CONCRETE CONTINUOUS
41	Structure Status	A - OPEN NO RESTRICTIONS	43B	Main struc Constr. Type	CULVERT
63	Oper. Rating Meth.	LOAD FACTOR	45	# of Main Spans	3
64	Operating Rating	45 Tons.	44A	Appr Struc. Mat type	
65	Inventory Rating Meth	LOAD FACTOR	44B	Appr Struc. Cnstr. type	
66	Inventory Rating	27 Tons.	46	# of Approach Span	0
70	Bridge Posting Code	=>LEGAL LOADS	107	Deck Mat/Constr.	NA
PROPOSED IMPROVEMENT INFORMATION			108A	Wear Surf Mat/Constr.	NA
Sufficiency Rating 65.8 Percent			108B	Membrane Mat/Constr.	NA
Deficiency Rating NOT DEFICIENT			108C	Deck Protect Mat/Constr.	NA
Funding Eligibility			CONDITION RATING INFORMATION		
75A	Proposed Work		58	Deck Cond. Rating	N
75B	Work Done By		59	Superstructure Cond. Rating	N
76	New Struc Length	0 Ft. 0 In.	60	Substructure Cond. Rating	N
94	Struc Improve Cost	\$ 0,000	61	Channel /Channel Protection Cond. Rating	5
95	Roadway Improve Cost	\$ 0,000	62	Culvert Cond. Rating	5
96	Total Project Cost	\$ 0,000	INSPECTION INFORMATION		
97	Year of Cost Estimates	0	90	Gen. Insp Date	11 / 17
APPRAISAL RATING INFORMATION			91	Gen. Insp. Frequency	24 Months
36A	Br. Rail App. Rating	DOES NOT MEET ACCEPT STND	92A	Frac. Critical Inspection	N Months
36B	Transition Rail App. Rating	DOES NOT MEET ACCEPT STND	93A	Frac. Critical Insp. Date	
36C	Approach Rail App. Rating	DOES NOT MEET ACCEPT STND	92B	Underwater Inspection	N Months
36D	Rail End Treat. App. Rating	DOES NOT MEET ACCEPT STND	93B	Underwater Insp. Date	
67	Struc Eval App. Rating	5	92C	Special Inspection	N Months
68	Deck Geometry App. Rating	4	93C	Special Inspection Date	
69	Underclearance App. Rating	N	BORDER BRIDGE INFORMATION		
71	Waterway Adeq. App. Rating	7	98	Neighboring State Code	
72	Approach Road App. Rating	8	98B	Neighboring State % Respon	
113	Scour Assess App. Rating	5	99	Neighboring State Struc. No.	
APPROVED POSTING INFORMATION			FIELD POSTING INFORMATION		
Approved Posting Category S-1			Field Posting Category S-1		
Ton1 Ton2 Ton3			Ton1 Ton2 Ton3		
Tonnage Values for Posting Sign			Tonnage Values for Posting Sign		
General Text for Posting Sign			General Text for Posting Sign		
NO POSTING REQUIRED			NO POSTING REQUIRED		

Design_No = P0984



Missouri Department of Transportation
Bridge Inventory and Inspection System
Structural Inventory & Appraisal Sheet

December 2, 2024
1:57:59pm

COUNTY : POLK BRIDGE : P0984 REVIEW STATUS : APPROVED NBI STATUS : P
RECORD TYPE : ROUTE CARRIED 'ON' STRUCT RUN DATE : 3/2/2023 SUBMITTAL YEAR : 2022

GENERAL STRUCTURE INFORMATION			ROUTE DESIGNATION INFORMATION		
1	State	MISSOURI	5A	Record Type	ROUTE CARRIED 'ON' STRUCT
2	District	SW	5B	Route Signing Prefix	MO
3	County	POLK	5C	Designated Level of Service	MAINLINE
8	Federal ID No.	8020	5D	Route Number	00000
27	Year Built	1956	5E	Directional Suffix	NOT APPLICABLE
106	Year Reconstructed	0	7	Facility Carried	RT O S
42A	Type of Service On	HIGHWAY	12	Base Hwy. Network	NO
21	Structure Maintenance	STATE HIGHWAY AGENCY	13A	LRS Inventory Route No.	
22	Structure Owner	STATE HIGHWAY AGENCY	13B	Subroute No.	
33	Br. Median Code	NO MEDIAN	20	Toll Status	ON FREE ROAD
37	Historical Significance	NOT ELIGIBLE FOR NR OF HP	26	Functional Classification	08-RURAL MINOR COLLECTOR
101	Parallel Struc Desg	NONE EXISTS	28A	Lanes on Structure	02
103	Temporary Structure	NOT TEMPORARY	100	STRAHNET Designation	RTE NOT A DEFENSE HWY
112	NBIS Bridge Length	YES	104	National Highway System	NOT ON NHS
			105	Federal Lands Highway	NOT APPLICABLE
			110	Designated Nat. Network	NO
STRUCTURE LOCATION INFORMATION			STRUCTURE TRAFFIC INFORMATION		
4	Place	FLEMINGTON	29	AADT	537
	Code	24598	30	AADT Year	2022
9	Location	S 32 T 35 N R 23 W	102	Direction of Traffic	2-WAY TRAFFIC
11	Milepoint	11.46 miles	109	AADT Truck Percent	10%
16	Latitude	37 D 44 M 27 S	114	Future AADT	859
17	Longitude	93 D 29 M 9 S	115	Future AADT Year	2042
UNDERRECORD INFORMATION			STRUCTURE GEOMETRIC INFORMATION		
6	Features Intersected	ASHLOCK CR	10	Inventory Rte. Vert. Clear	99 Ft. 99 In.
42B	Type of Service Under	WATERWAY	19	By pass Detour Length	24.80 miles
28B	Lanes Under Structure	00	32	Approach Roadway Width	22 Ft. 12 In.
54A	Vert. Clearance Ref.	N/A	34	Skew	60.00 Degrees
54B	Vert. Clearance	0 Ft. 0 In.	35	Struct. Flared	NO
55A	Rt. Lat Clear Ref.	N/A	47	Total Horiz. Clear	23 Ft. 11 In.
55B	Rt. Lat Clearance	0 Ft. 0 In.	48	Maximum Span Length	12 Ft. 2 In.
56	Left Lat Clearance	0 Ft. 0 In.	49	Structure Length	74 Ft. 6 In.
38	Navigation Control	PERMIT NOT REQ	50A	Left Curb/Sidewalk Width	0 Ft. 0 In.
39	Nav Vertical Clear	0 Ft. 0 In.	50B	Right Curb/Sidewalk Width	0 Ft. 0 In.
40	Nav Horizontal Clear	0 Ft. 0 In.	51	Curb to Curb Br. Width	23 Ft. 11 In.
111	Nav. Pier Protection		52	Deck Width (Out-Out)	25 Ft. 11 In.
116	Nav. Cl. Vert. Clear		53	Vert. Clearance Over Deck	99 Ft. 99 In.

Design_No = P0984



Missouri Department of Transportation
Bridge Inventory and Inspection System
Structural Inventory & Appraisal Sheet

December 2, 2024
1:57:59pm

COUNTY : POLK BRIDGE : P0984 REVIEW STATUS : APPROVED NBI STATUS : P
RECORD TYPE : ROUTE CARRIED 'ON' STRUCT RUN DATE : 3/2/2023 SUBMITTAL YEAR : 2022

LOAD RATING AND POSTING INFORMATION			MATERIAL/CONSTRUCTION INFORMATION		
31	Design Load	H 10	43A	Main Struc. Mat type	CONCRETE CONTINUOUS
41	Structure Status	A - OPEN NO RESTRICTIONS	43B	Main struc Constr. Type	CULVERT
63	Oper. Rating Meth.	LOAD FACTOR	45	# of Main Spans	3
64	Operating Rating	45 Tons.	44A	Appr Struc. Mat type	
65	Inventory Rating Meth	LOAD FACTOR	44B	Appr Struc. Cnstr. type	
66	Inventory Rating	27 Tons.	46	# of Approach Span	0
70	Bridge Posting Code	=>LEGAL LOADS	107	Deck Mat/Constr.	NA
PROPOSED IMPROVEMENT INFORMATION			108A	Wear Surf Mat/Constr.	NA
Sufficiency Rating 65.9 Percent			108B	Membrane Mat/Constr.	NA
Deficiency Rating NOT DEFICIENT			108C	Deck Protect Mat/Constr.	NA
Funding Eligibility			CONDITION RATING INFORMATION		
75A	Proposed Work		58	Deck Cond. Rating	N
75B	Work Done By		59	Superstructure Cond. Rating	N
76	New Struc Length	0 Ft. 0 In.	60	Substructure Cond. Rating	N
94	Struc Improve Cost	\$ 0,000	61	Channel /Channel Protection Cond. Rating	4
95	Roadway Improve Cost	\$ 0,000	62	Culvert Cond. Rating	5
96	Total Project Cost	\$ 0,000	INSPECTION INFORMATION		
97	Year of Cost Estimates	0	90	Gen. Insp Date	11 / 21
APPRAISAL RATING INFORMATION			91	Gen. Insp. Frequency	24 Months
36A	Br. Rail App. Rating	DOES NOT MEET ACCEPT STND	92A	Frac. Critical Inspection	N Months
36B	Transition Rail App. Rating	DOES NOT MEET ACCEPT STND	93A	Frac. Critical Insp. Date	
36C	Approach Rail App. Rating	DOES NOT MEET ACCEPT STND	92B	Underwater Inspection	N Months
36D	Rail End Treat. App. Rating	DOES NOT MEET ACCEPT STND	93B	Underwater Insp. Date	
67	Struc Eval App. Rating	5	92C	Special Inspection	N Months
68	Deck Geometry App. Rating	4	93C	Special Inspection Date	
69	Underclearance App. Rating	N	BORDER BRIDGE INFORMATION		
71	Waterway Adeq. App. Rating	7	98	Neighboring State Code	
72	Approach Road App. Rating	8	98B	Neighboring State % Respon	
113	Scour Assess App. Rating	5	99	Neighboring State Struc. No.	
APPROVED POSTING INFORMATION			FIELD POSTING INFORMATION		
Approved Posting Category S-1			Field Posting Category S-1		
Ton1 Ton2 Ton3			Ton1 Ton2 Ton3		
Tonnage Values for Posting Sign			Tonnage Values for Posting Sign		
General Text for Posting Sign			General Text for Posting Sign		
NO POSTING REQUIRED			NO POSTING REQUIRED		

Design_No = P0984



Missouri Department of Transportation
Bridge Inventory and Inspection System
Structural Inventory & Appraisal Sheet

December 2, 2024
1:57:59pm

COUNTY : POLK BRIDGE : P0984 REVIEW STATUS : APPROVED NBI STATUS : P
RECORD TYPE : ROUTE CARRIED 'ON' STRUCT RUN DATE : 1/19/2011 SUBMITTAL YEAR : 2010

GENERAL STRUCTURE INFORMATION			ROUTE DESIGNATION INFORMATION		
1	State	MISSOURI	5A	Record Type	ROUTE CARRIED 'ON' STRUCT
2	District	SW	5B	Route Signing Prefix	MO
3	County	POLK	5C	Designated Level of Service	MAINLINE
8	Federal ID No.	8020	5D	Route Number	00000
27	Year Built	1956	5E	Directional Suffix	NOT APPLICABLE
106	Year Reconstructed	0	7	Facility Carried	RT O S
42A	Type of Service On	HIGHWAY	12	Base Hwy. Network	NO
21	Structure Maintenance	STATE HIGHWAY AGENCY	13A	LRS Inventory Route No.	
22	Structure Owner	STATE HIGHWAY AGENCY	13B	Subroute No.	
33	Br. Median Code	NO MEDIAN	20	Toll Status	ON FREE ROAD
37	Historical Significance	NOT ELIGIBLE FOR NR OF HP	26	Functional Classification	08-RURAL MINOR COLLECTOR
101	Parallel Struc Desg	NONE EXISTS	28A	Lanes on Structure	02
103	Temporary Structure	NOT TEMPORARY	100	STRAHNET Designation	RTE NOT A DEFENSE HWY
112	NBIS Bridge Length	YES	104	National Highway System	NOT ON NHS
			105	Federal Lands Highway	NOT APPLICABLE
			110	Designated Nat. Network	NO
STRUCTURE LOCATION INFORMATION			STRUCTURE TRAFFIC INFORMATION		
4	Place	FLEMINGTON	29	AADT	438
	Code	24598	30	AADT Year	2009
9	Location	S 32 T 35 N R 23 W	102	Direction of Traffic	2-WAY TRAFFIC
11	Milepoint	11.46 miles	109	AADT Truck Percent	12%
16	Latitude	37 D 44 M 24 S	114	Future AADT	700
17	Longitude	93 D 29 M 6 S	115	Future AADT Year	2031
UNDERRECORD INFORMATION			STRUCTURE GEOMETRIC INFORMATION		
6	Features Intersected	ASHLOCK CR	10	Inventory Rte. Vert. Clear	99 Ft. 99 In.
42B	Type of Service Under	WATERWAY	19	By pass Detour Length	24.80 miles
28B	Lanes Under Structure	00	32	Approach Roadway Width	22 Ft. 12 In.
54A	Vert. Clearance Ref.	N/A	34	Skew	60.00 Degrees
54B	Vert. Clearance	0 Ft. 0 In.	35	Struct. Flared	NO
55A	Rt. Lat Clear Ref.	N/A	47	Total Horiz. Clear	23 Ft. 11 In.
55B	Rt. Lat Clearance	0 Ft. 0 In.	48	Maximum Span Length	12 Ft. 2 In.
56	Left Lat Clearance	0 Ft. 0 In.	49	Structure Length	74 Ft. 6 In.
38	Navigation Control	PERMIT NOT REQ	50A	Left Curb/Sidewalk Width	0 Ft. 0 In.
39	Nav Vertical Clear	0 Ft. 0 In.	50B	Right Curb/Sidewalk Width	0 Ft. 0 In.
40	Nav Horizontal Clear	0 Ft. 0 In.	51	Curb to Curb Br. Width	23 Ft. 11 In.
111	Nav. Pier Protection		52	Deck Width (Out-Out)	25 Ft. 11 In.
116	Nav. Cl. Vert. Clear		53	Vert. Clearance Over Deck	99 Ft. 99 In.

Design_No = P0984



Missouri Department of Transportation
Bridge Inventory and Inspection System
Structural Inventory & Appraisal Sheet

December 2, 2024
1:57:59pm

COUNTY : POLK BRIDGE : P0984 REVIEW STATUS : APPROVED NBI STATUS : P
RECORD TYPE : ROUTE CARRIED 'ON' STRUCT RUN DATE : 1/19/2011 SUBMITTAL YEAR : 2010

LOAD RATING AND POSTING INFORMATION			MATERIAL/CONSTRUCTION INFORMATION		
31	Design Load	H 10	43A	Main Struc. Mat type	CONCRETE CONTINUOUS
41	Structure Status	A - OPEN NO RESTRICTIONS	43B	Main struc Constr. Type	CULVERT
63	Oper. Rating Meth.	NO RATING ANALYSIS PERFMD	45	# of Main Spans	3
64	Operating Rating	55 Tons.	44A	Appr Struc. Mat type	
65	Inventory Rating Meth	NO RATING ANALYSIS PERFMD	44B	Appr Struc. Cnstr. type	
66	Inventory Rating	17 Tons.	46	# of Approach Span	0
70	Bridge Posting Code	=>LEGAL LOADS	107	Deck Mat/Constr.	NA
PROPOSED IMPROVEMENT INFORMATION			108A	Wear Surf Mat/Constr.	NA
Sufficiency Rating 62.5 Percent			108B	Membrane Mat/Constr.	NA
Deficiency Rating NOT DEFICIENT			108C	Deck Protect Mat/Constr.	NA
Funding Eligibility			CONDITION RATING INFORMATION		
75A	Proposed Work		58	Deck Cond. Rating	N
75B	Work Done By		59	Superstructure Cond. Rating	N
76	New Struc Length	0 Ft. 0 In.	60	Substructure Cond. Rating	N
94	Struc Improve Cost	\$ 0,000	61	Channel /Channel Protection Cond. Rating	6
95	Roadway Improve Cost	\$ 0,000	62	Culvert Cond. Rating	6
96	Total Project Cost	\$ 0,000	INSPECTION INFORMATION		
97	Year of Cost Estimates	0	90	Gen. Insp Date	11 / 09
APPRAISAL RATING INFORMATION			91	Gen. Insp. Frequency	24 Months
36A	Br. Rail App. Rating	NOT APPLICABLE	92A	Frac. Critical Inspection	N Months
36B	Transition Rail App. Rating	NOT APPLICABLE	93A	Frac. Critical Insp. Date	
36C	Approach Rail App. Rating	NOT APPLICABLE	92B	Underwater Inspection	N Months
36D	Rail End Treat. App. Rating	NOT APPLICABLE	93B	Underwater Insp. Date	
67	Struc Eval App. Rating	4	92C	Special Inspection	N Months
68	Deck Geometry App. Rating	4	93C	Special Inspection Date	
69	Underclearance App. Rating	N	BORDER BRIDGE INFORMATION		
71	Waterway Adeq. App. Rating	7	98	Neighboring State Code	
72	Approach Road App. Rating	8	98B	Neighboring State % Respon	
113	Scour Assess App. Rating	8	99	Neighboring State Struc. No.	
APPROVED POSTING INFORMATION			FIELD POSTING INFORMATION		
Approved Posting Category S-1			Field Posting Category S-1		
Ton1 Ton2 Ton3			Ton1 Ton2 Ton3		
Tonnage Values for Posting Sign			Tonnage Values for Posting Sign		
General Text for Posting Sign			General Text for Posting Sign		
NO POSTING REQUIRED			NO POSTING REQUIRED		

Design_No = P0984



Missouri Department of Transportation
Bridge Inventory and Inspection System
Structural Inventory & Appraisal Sheet

December 2, 2024
1:57:59pm

COUNTY : POLK BRIDGE : P0984 REVIEW STATUS : APPROVED NBI STATUS : P
RECORD TYPE : ROUTE CARRIED 'ON' STRUCT RUN DATE : 2/22/2005 SUBMITTAL YEAR : 2004

GENERAL STRUCTURE INFORMATION			ROUTE DESIGNATION INFORMATION		
1	State	MISSOURI	5A	Record Type	ROUTE CARRIED 'ON' STRUCT
2	District	SW	5B	Route Signing Prefix	MO
3	County	POLK	5C	Designated Level of Service	MAINLINE
8	Federal ID No.	8020	5D	Route Number	00000
27	Year Built	1956	5E	Directional Suffix	NOT APPLICABLE
106	Year Reconstructed	0	7	Facility Carried	RT O S
42A	Type of Service On	HIGHWAY	12	Base Hwy. Network	NO
21	Structure Maintenance	STATE HIGHWAY AGENCY	13A	LRS Inventory Route No.	
22	Structure Owner	STATE HIGHWAY AGENCY	13B	Subroute No.	
33	Br. Median Code	NO MEDIAN	20	Toll Status	ON FREE ROAD
37	Historical Significance	NOT ELIGIBLE FOR NR OF HP	26	Functional Classification	08-RURAL MINOR COLLECTOR
101	Parallel Struc Desg	NONE EXISTS	28A	Lanes on Structure	02
103	Temporary Structure	NOT TEMPORARY	100	STRAHNET Designation	RTE NOT A DEFENSE HWY
112	NBIS Bridge Length	YES	104	National Highway System	NOT ON NHS
			105	Federal Lands Highway	NOT APPLICABLE
			110	Designated Nat. Network	NO
STRUCTURE LOCATION INFORMATION			STRUCTURE TRAFFIC INFORMATION		
4	Place	FLEMINGTON	29	AADT	506
	Code	24598	30	AADT Year	2003
9	Location	S 32 T 35N R 23W	102	Direction of Traffic	2-WAY TRAFFIC
11	Milepoint	11.54 miles	109	AADT Truck Percent	10%
16	Latitude	37 D 44 M 24 S	114	Future AADT	809
17	Longitude	93 D 29 M 6 S	115	Future AADT Year	2025
UNDERRECORD INFORMATION			STRUCTURE GEOMETRIC INFORMATION		
6	Features Intersected	ASHLOCK CR	10	Inventory Rte. Vert. Clear	99 Ft. 99 In.
42B	Type of Service Under	WATERWAY	19	By pass Detour Length	24.80 miles
28B	Lanes Under Structure	00	32	Approach Roadway Width	22 Ft. 12 In.
54A	Vert. Clearance Ref.	N/A	34	Skew	60.00 Degrees
54B	Vert. Clearance	0 Ft. 0 In.	35	Struct. Flared	NO
55A	Rt. Lat Clear Ref.	N/A	47	Total Horiz. Clear	23 Ft. 11 In.
55B	Rt. Lat Clearance	0 Ft. 0 In.	48	Maximum Span Length	12 Ft. 2 In.
56	Left Lat Clearance	0 Ft. 0 In.	49	Structure Length	74 Ft. 6 In.
38	Navigation Control	PERMIT NOT REQ	50A	Left Curb/Sidewalk Width	0 Ft. 0 In.
39	Nav Vertical Clear	0 Ft. 0 In.	50B	Right Curb/Sidewalk Width	0 Ft. 0 In.
40	Nav Horizontal Clear	0 Ft. 0 In.	51	Curb to Curb Br. Width	23 Ft. 11 In.
111	Nav. Pier Protection		52	Deck Width (Out-Out)	25 Ft. 11 In.
116	Nav. Cl. Vert. Clear		53	Vert. Clearance Over Deck	99 Ft. 99 In.

Design_No = P0984



Missouri Department of Transportation
Bridge Inventory and Inspection System
Structural Inventory & Appraisal Sheet

December 2, 2024
1:57:59pm

COUNTY : POLK BRIDGE : P0984 REVIEW STATUS : APPROVED NBI STATUS : P
RECORD TYPE : ROUTE CARRIED 'ON' STRUCT RUN DATE : 2/22/2005 SUBMITTAL YEAR : 2004

LOAD RATING AND POSTING INFORMATION			MATERIAL/CONSTRUCTION INFORMATION		
31	Design Load	H 10	43A	Main Struc. Mat type	CONCRETE CONTINUOUS
41	Structure Status	A - OPEN NO RESTRICTIONS	43B	Main struc Constr. Type	CULVERT
63	Oper. Rating Meth.	NO RATING ANALYSIS PERFMD	45	# of Main Spans	3
64	Operating Rating	55 Tons.	44A	Appr Struc. Mat type	
65	Inventory Rating Meth	NO RATING ANALYSIS PERFMD	44B	Appr Struc. Cnstr. type	
66	Inventory Rating	17 Tons.	46	# of Approach Span	0
70	Bridge Posting Code	=>LEGAL LOADS	107	Deck Mat/Constr.	NA
PROPOSED IMPROVEMENT INFORMATION			108A	Wear Surf Mat/Constr.	NA
Sufficiency Rating 62.3 Percent			108B	Membrane Mat/Constr.	NA
Deficiency Rating NOT DEFICIENT			108C	Deck Protect Mat/Constr.	NA
Funding Eligibility			CONDITION RATING INFORMATION		
75A	Proposed Work		58	Deck Cond. Rating	N
75B	Work Done By		59	Superstructure Cond. Rating	N
76	New Struc Length	0 Ft. 0 In.	60	Substructure Cond. Rating	N
94	Struc Improve Cost	\$ 0,000	61	Channel /Channel Protection Cond. Rating	6
95	Roadway Improve Cost	\$ 0,000	62	Culvert Cond. Rating	6
96	Total Project Cost	\$ 0,000	INSPECTION INFORMATION		
97	Year of Cost Estimates	0	90	Gen. Insp Date	12 / 03
APPRAISAL RATING INFORMATION			91	Gen. Insp. Frequency	24 Months
36A	Br. Rail App. Rating	MEETS ACCEPTBLE STND	92A	Frac. Critical Inspection	N Months
36B	Transition Rail App. Rating	MEETS ACCEPTBLE STND	93A	Frac. Critical Insp. Date	
36C	Approach Rail App. Rating	MEETS ACCEPTBLE STND	92B	Underwater Inspection	N Months
36D	Rail End Treat. App. Rating	MEETS ACCEPTBLE STND	93B	Underwater Insp. Date	
67	Struc Eval App. Rating	4	92C	Special Inspection	N Months
68	Deck Geometry App. Rating	4	93C	Special Inspection Date	
69	Underclearance App. Rating	N	BORDER BRIDGE INFORMATION		
71	Waterway Adeq. App. Rating	7	98	Neighboring State Code	
72	Approach Road App. Rating	8	98B	Neighboring State % Respon	
113	Scour Assess App. Rating	8	99	Neighboring State Struc. No.	
APPROVED POSTING INFORMATION			FIELD POSTING INFORMATION		
Approved Posting Category S-1			Field Posting Category S-1		
Ton1 Ton2 Ton3			Ton1 Ton2 Ton3		
Tonnage Values for Posting Sign			Tonnage Values for Posting Sign		
General Text for Posting Sign			General Text for Posting Sign		
NO POSTING REQUIRED			NO POSTING REQUIRED		

Design_No = P0984



Missouri Department of Transportation
Bridge Inventory and Inspection System
Structural Inventory & Appraisal Sheet

December 2, 2024
1:57:59pm

COUNTY : POLK BRIDGE : P0984 REVIEW STATUS : APPROVED NBI STATUS : P
RECORD TYPE : ROUTE CARRIED 'ON' STRUCT RUN DATE : 1/23/2008 SUBMITTAL YEAR : 2007

GENERAL STRUCTURE INFORMATION			ROUTE DESIGNATION INFORMATION		
1	State	MISSOURI	5A	Record Type	ROUTE CARRIED 'ON' STRUCT
2	District	SW	5B	Route Signing Prefix	MO
3	County	POLK	5C	Designated Level of Service	MAINLINE
8	Federal ID No.	8020	5D	Route Number	00000
27	Year Built	1956	5E	Directional Suffix	NOT APPLICABLE
106	Year Reconstructed	0	7	Facility Carried	RT O S
42A	Type of Service On	HIGHWAY	12	Base Hwy. Network	NO
21	Structure Maintenance	STATE HIGHWAY AGENCY	13A	LRS Inventory Route No.	
22	Structure Owner	STATE HIGHWAY AGENCY	13B	Subroute No.	
33	Br. Median Code	NO MEDIAN	20	Toll Status	ON FREE ROAD
37	Historical Significance	NOT ELIGIBLE FOR NR OF HP	26	Functional Classification	08-RURAL MINOR COLLECTOR
101	Parallel Struc Desg	NONE EXISTS	28A	Lanes on Structure	02
103	Temporary Structure	NOT TEMPORARY	100	STRAHNET Designation	RTE NOT A DEFENSE HWY
112	NBIS Bridge Length	YES	104	National Highway System	NOT ON NHS
			105	Federal Lands Highway	NOT APPLICABLE
			110	Designated Nat. Network	NO
STRUCTURE LOCATION INFORMATION			STRUCTURE TRAFFIC INFORMATION		
4	Place	FLEMINGTON	29	AADT	458
	Code	24598	30	AADT Year	2006
9	Location	S 32 T 35 N R 23 W	102	Direction of Traffic	2-WAY TRAFFIC
11	Milepoint	11.46 miles	109	AADT Truck Percent	10%
16	Latitude	37 D 44 M 24 S	114	Future AADT	732
17	Longitude	93 D 29 M 6 S	115	Future AADT Year	2028
UNDERRECORD INFORMATION			STRUCTURE GEOMETRIC INFORMATION		
6	Features Intersected	ASHLOCK CR	10	Inventory Rte. Vert. Clear	99 Ft. 99 In.
42B	Type of Service Under	WATERWAY	19	By pass Detour Length	24.80 miles
28B	Lanes Under Structure	00	32	Approach Roadway Width	22 Ft. 12 In.
54A	Vert. Clearance Ref.	N/A	34	Skew	60.00 Degrees
54B	Vert. Clearance	0 Ft. 0 In.	35	Struct. Flared	NO
55A	Rt. Lat Clear Ref.	N/A	47	Total Horiz. Clear	23 Ft. 11 In.
55B	Rt. Lat Clearance	0 Ft. 0 In.	48	Maximum Span Length	12 Ft. 2 In.
56	Left Lat Clearance	0 Ft. 0 In.	49	Structure Length	74 Ft. 6 In.
38	Navigation Control	PERMIT NOT REQ	50A	Left Curb/Sidewalk Width	0 Ft. 0 In.
39	Nav Vertical Clear	0 Ft. 0 In.	50B	Right Curb/Sidewalk Width	0 Ft. 0 In.
40	Nav Horizontal Clear	0 Ft. 0 In.	51	Curb to Curb Br. Width	23 Ft. 11 In.
111	Nav. Pier Protection		52	Deck Width (Out-Out)	25 Ft. 11 In.
116	Nav. Cl. Vert. Clear		53	Vert. Clearance Over Deck	99 Ft. 99 In.

Design_No = P0984



Missouri Department of Transportation
Bridge Inventory and Inspection System
Structural Inventory & Appraisal Sheet

December 2, 2024
1:57:59pm

COUNTY : POLK BRIDGE : P0984 REVIEW STATUS : APPROVED NBI STATUS : P
RECORD TYPE : ROUTE CARRIED 'ON' STRUCT RUN DATE : 1/23/2008 SUBMITTAL YEAR : 2007

LOAD RATING AND POSTING INFORMATION			MATERIAL/CONSTRUCTION INFORMATION		
31	Design Load	H 10	43A	Main Struc. Mat type	CONCRETE CONTINUOUS
41	Structure Status	A - OPEN NO RESTRICTIONS	43B	Main struc Constr. Type	CULVERT
63	Oper. Rating Meth.	NO RATING ANALYSIS PERFM	45	# of Main Spans	3
64	Operating Rating	55 Tons.	44A	Appr Struc. Mat type	
65	Inventory Rating Meth	NO RATING ANALYSIS PERFM	44B	Appr Struc. Cnstr. type	
66	Inventory Rating	17 Tons.	46	# of Approach Span	0
70	Bridge Posting Code	=>LEGAL LOADS	107	Deck Mat/Constr.	NA
PROPOSED IMPROVEMENT INFORMATION			108A	Wear Surf Mat/Constr.	NA
Sufficiency Rating 62.5 Percent			108B	Membrane Mat/Constr.	NA
Deficiency Rating NOT DEFICIENT			108C	Deck Protect Mat/Constr.	NA
Funding Eligibility			CONDITION RATING INFORMATION		
75A	Proposed Work		58	Deck Cond. Rating	N
75B	Work Done By		59	Superstructure Cond. Rating	N
76	New Struc Length	0 Ft. 0 In.	60	Substructure Cond. Rating	N
94	Struc Improve Cost	\$ 0,000	61	Channel /Channel Protection Cond. Rating	6
95	Roadway Improve Cost	\$ 0,000	62	Culvert Cond. Rating	6
96	Total Project Cost	\$ 0,000	INSPECTION INFORMATION		
97	Year of Cost Estimates	0	90	Gen. Insp Date	11 / 07
APPRAISAL RATING INFORMATION			91	Gen. Insp. Frequency	24 Months
36A	Br. Rail App. Rating	MEETS ACCEPTBLE STND	92A	Frac. Critical Inspection	N Months
36B	Transition Rail App. Rating	MEETS ACCEPTBLE STND	93A	Frac. Critical Insp. Date	
36C	Approach Rail App. Rating	MEETS ACCEPTBLE STND	92B	Underwater Inspection	N Months
36D	Rail End Treat. App. Rating	MEETS ACCEPTBLE STND	93B	Underwater Insp. Date	
67	Struc Eval App. Rating	4	92C	Special Inspection	N Months
68	Deck Geometry App. Rating	4	93C	Special Inspection Date	
69	Underclearance App. Rating	N	BORDER BRIDGE INFORMATION		
71	Waterway Adeq. App. Rating	7	98	Neighboring State Code	
72	Approach Road App. Rating	8	98B	Neighboring State % Respon	
113	Scour Assess App. Rating	8	99	Neighboring State Struc. No.	
APPROVED POSTING INFORMATION			FIELD POSTING INFORMATION		
Approved Posting Category S-1			Field Posting Category S-1		
Ton1 Ton2 Ton3			Ton1 Ton2 Ton3		
Tonnage Values for Posting Sign			Tonnage Values for Posting Sign		
General Text for Posting Sign			General Text for Posting Sign		
NO POSTING REQUIRED			NO POSTING REQUIRED		

Design_No = P0984



Missouri Department of Transportation
Bridge Inventory and Inspection System
Structural Inventory & Appraisal Sheet

December 2, 2024
1:57:59pm

COUNTY : POLK BRIDGE : P0984 REVIEW STATUS : APPROVED NBI STATUS : P
RECORD TYPE : ROUTE CARRIED 'ON' STRUCT RUN DATE : 2/23/2012 SUBMITTAL YEAR : 2011

GENERAL STRUCTURE INFORMATION			ROUTE DESIGNATION INFORMATION		
1	State	MISSOURI	5A	Record Type	ROUTE CARRIED 'ON' STRUCT
2	District	SW	5B	Route Signing Prefix	MO
3	County	POLK	5C	Designated Level of Service	MAINLINE
8	Federal ID No.	8020	5D	Route Number	00000
27	Year Built	1956	5E	Directional Suffix	NOT APPLICABLE
106	Year Reconstructed	0	7	Facility Carried	RT O S
42A	Type of Service On	HIGHWAY	12	Base Hwy. Network	NO
21	Structure Maintenance	STATE HIGHWAY AGENCY	13A	LRS Inventory Route No.	
22	Structure Owner	STATE HIGHWAY AGENCY	13B	Subroute No.	
33	Br. Median Code	NO MEDIAN	20	Toll Status	ON FREE ROAD
37	Historical Significance	NOT ELIGIBLE FOR NR OF HP	26	Functional Classification	08-RURAL MINOR COLLECTOR
101	Parallel Struc Desg	NONE EXISTS	28A	Lanes on Structure	02
103	Temporary Structure	NOT TEMPORARY	100	STRAHNET Designation	RTE NOT A DEFENSE HWY
112	NBIS Bridge Length	YES	104	National Highway System	NOT ON NHS
			105	Federal Lands Highway	NOT APPLICABLE
			110	Designated Nat. Network	NO
STRUCTURE LOCATION INFORMATION			STRUCTURE TRAFFIC INFORMATION		
4	Place	FLEMINGTON	29	AADT	410
	Code	24598	30	AADT Year	2011
9	Location	S 32 T 35 N R 23 W	102	Direction of Traffic	2-WAY TRAFFIC
11	Milepoint	11.46 miles	109	AADT Truck Percent	12%
16	Latitude	37 D 44 M 27 S	114	Future AADT	656
17	Longitude	93 D 29 M 9 S	115	Future AADT Year	2032
UNDERRECORD INFORMATION			STRUCTURE GEOMETRIC INFORMATION		
6	Features Intersected	ASHLOCK CR	10	Inventory Rte. Vert. Clear	99 Ft. 99 In.
42B	Type of Service Under	WATERWAY	19	By pass Detour Length	24.80 miles
28B	Lanes Under Structure	00	32	Approach Roadway Width	22 Ft. 12 In.
54A	Vert. Clearance Ref.	N/A	34	Skew	60.00 Degrees
54B	Vert. Clearance	0 Ft. 0 In.	35	Struct. Flared	NO
55A	Rt. Lat Clear Ref.	N/A	47	Total Horiz. Clear	23 Ft. 11 In.
55B	Rt. Lat Clearance	0 Ft. 0 In.	48	Maximum Span Length	12 Ft. 2 In.
56	Left Lat Clearance	0 Ft. 0 In.	49	Structure Length	74 Ft. 6 In.
38	Navigation Control	PERMIT NOT REQ	50A	Left Curb/Sidewalk Width	0 Ft. 0 In.
39	Nav Vertical Clear	0 Ft. 0 In.	50B	Right Curb/Sidewalk Width	0 Ft. 0 In.
40	Nav Horizontal Clear	0 Ft. 0 In.	51	Curb to Curb Br. Width	23 Ft. 11 In.
111	Nav. Pier Protection		52	Deck Width (Out-Out)	25 Ft. 11 In.
116	Nav. Cl. Vert. Clear		53	Vert. Clearance Over Deck	99 Ft. 99 In.

Design_No = P0984



Missouri Department of Transportation
Bridge Inventory and Inspection System
Structural Inventory & Appraisal Sheet

December 2, 2024
1:57:59pm

COUNTY : POLK BRIDGE : P0984 REVIEW STATUS : APPROVED NBI STATUS : P
RECORD TYPE : ROUTE CARRIED 'ON' STRUCT RUN DATE : 2/23/2012 SUBMITTAL YEAR : 2011

LOAD RATING AND POSTING INFORMATION			MATERIAL/CONSTRUCTION INFORMATION		
31	Design Load	H 10	43A	Main Struc. Mat type	CONCRETE CONTINUOUS
41	Structure Status	A - OPEN NO RESTRICTIONS	43B	Main struc Constr. Type	CULVERT
63	Oper. Rating Meth.	NO RATING ANALYSIS PERFMD	45	# of Main Spans	3
64	Operating Rating	55 Tons.	44A	Appr Struc. Mat type	
65	Inventory Rating Meth	NO RATING ANALYSIS PERFMD	44B	Appr Struc. Cnstr. type	
66	Inventory Rating	17 Tons.	46	# of Approach Span	0
70	Bridge Posting Code	=>LEGAL LOADS	107	Deck Mat/Constr.	NA
PROPOSED IMPROVEMENT INFORMATION			108A	Wear Surf Mat/Constr.	NA
Sufficiency Rating 62.6 Percent			108B	Membrane Mat/Constr.	NA
Deficiency Rating NOT DEFICIENT			108C	Deck Protect Mat/Constr.	NA
Funding Eligibility			CONDITION RATING INFORMATION		
75A	Proposed Work		58	Deck Cond. Rating	N
75B	Work Done By		59	Superstructure Cond. Rating	N
76	New Struc Length	0 Ft. 0 In.	60	Substructure Cond. Rating	N
94	Struc Improve Cost	\$ 0,000	61	Channel /Channel Protection Cond. Rating	6
95	Roadway Improve Cost	\$ 0,000	62	Culvert Cond. Rating	6
96	Total Project Cost	\$ 0,000	INSPECTION INFORMATION		
97	Year of Cost Estimates	0	90	Gen. Insp Date	12 / 11
APPRAISAL RATING INFORMATION			91	Gen. Insp. Frequency	24 Months
36A	Br. Rail App. Rating	NOT APPLICABLE	92A	Frac. Critical Inspection	N Months
36B	Transition Rail App. Rating	NOT APPLICABLE	93A	Frac. Critical Insp. Date	
36C	Approach Rail App. Rating	NOT APPLICABLE	92B	Underwater Inspection	N Months
36D	Rail End Treat. App. Rating	NOT APPLICABLE	93B	Underwater Insp. Date	
67	Struc Eval App. Rating	4	92C	Special Inspection	N Months
68	Deck Geometry App. Rating	4	93C	Special Inspection Date	
69	Underclearance App. Rating	N	BORDER BRIDGE INFORMATION		
71	Waterway Adeq. App. Rating	7	98	Neighboring State Code	
72	Approach Road App. Rating	8	98B	Neighboring State % Respon	
113	Scour Assess App. Rating	8	99	Neighboring State Struc. No.	
APPROVED POSTING INFORMATION			FIELD POSTING INFORMATION		
Approved Posting Category S-1			Field Posting Category S-1		
Ton1 Ton2 Ton3			Ton1 Ton2 Ton3		
Tonnage Values for Posting Sign			Tonnage Values for Posting Sign		
General Text for Posting Sign			General Text for Posting Sign		
NO POSTING REQUIRED			NO POSTING REQUIRED		

Design_No = P0984



Missouri Department of Transportation
Bridge Inventory and Inspection System
Structural Inventory & Appraisal Sheet

December 2, 2024
1:57:59pm

COUNTY : POLK BRIDGE : P0984 REVIEW STATUS : APPROVED NBI STATUS : P
RECORD TYPE : ROUTE CARRIED 'ON' STRUCT RUN DATE : 1/6/2017 SUBMITTAL YEAR : 2016

GENERAL STRUCTURE INFORMATION			ROUTE DESIGNATION INFORMATION		
1	State	MISSOURI	5A	Record Type	ROUTE CARRIED 'ON' STRUCT
2	District	SW	5B	Route Signing Prefix	MO
3	County	POLK	5C	Designated Level of Service	MAINLINE
8	Federal ID No.	8020	5D	Route Number	00000
27	Year Built	1956	5E	Directional Suffix	NOT APPLICABLE
106	Year Reconstructed	0	7	Facility Carried	RT O S
42A	Type of Service On	HIGHWAY	12	Base Hwy. Network	NO
21	Structure Maintenance	STATE HIGHWAY AGENCY	13A	LRS Inventory Route No.	
22	Structure Owner	STATE HIGHWAY AGENCY	13B	Subroute No.	
33	Br. Median Code	NO MEDIAN	20	Toll Status	ON FREE ROAD
37	Historical Significance	NOT ELIGIBLE FOR NR OF HP	26	Functional Classification	08-RURAL MINOR COLLECTOR
101	Parallel Struc Desg	NONE EXISTS	28A	Lanes on Structure	02
103	Temporary Structure	NOT TEMPORARY	100	STRAHNET Designation	RTE NOT A DEFENSE HWY
112	NBIS Bridge Length	YES	104	National Highway System	NOT ON NHS
			105	Federal Lands Highway	NOT APPLICABLE
			110	Designated Nat. Network	NO
STRUCTURE LOCATION INFORMATION			STRUCTURE TRAFFIC INFORMATION		
4	Place	FLEMINGTON	29	AADT	179
	Code	24598	30	AADT Year	2016
9	Location	S 32 T 35 N R 23 W	102	Direction of Traffic	2-WAY TRAFFIC
11	Milepoint	11.46 miles	109	AADT Truck Percent	10%
16	Latitude	37 D 44 M 27 S	114	Future AADT	286
17	Longitude	93 D 29 M 9 S	115	Future AADT Year	2037
UNDERRECORD INFORMATION			STRUCTURE GEOMETRIC INFORMATION		
6	Features Intersected	ASHLOCK CR	10	Inventory Rte. Vert. Clear	99 Ft. 99 In.
42B	Type of Service Under	WATERWAY	19	By pass Detour Length	24.80 miles
28B	Lanes Under Structure	00	32	Approach Roadway Width	22 Ft. 12 In.
54A	Vert. Clearance Ref.	N/A	34	Skew	60.00 Degrees
54B	Vert. Clearance	0 Ft. 0 In.	35	Struct. Flared	NO
55A	Rt. Lat Clear Ref.	N/A	47	Total Horiz. Clear	23 Ft. 11 In.
55B	Rt. Lat Clearance	0 Ft. 0 In.	48	Maximum Span Length	12 Ft. 2 In.
56	Left Lat Clearance	0 Ft. 0 In.	49	Structure Length	74 Ft. 6 In.
38	Navigation Control	PERMIT NOT REQ	50A	Left Curb/Sidewalk Width	0 Ft. 0 In.
39	Nav Vertical Clear	0 Ft. 0 In.	50B	Right Curb/Sidewalk Width	0 Ft. 0 In.
40	Nav Horizontal Clear	0 Ft. 0 In.	51	Curb to Curb Br. Width	23 Ft. 11 In.
111	Nav. Pier Protection		52	Deck Width (Out-Out)	25 Ft. 11 In.
116	Nav. Cl. Vert. Clear		53	Vert. Clearance Over Deck	99 Ft. 99 In.

Design_No = P0984



Missouri Department of Transportation
Bridge Inventory and Inspection System
Structural Inventory & Appraisal Sheet

December 2, 2024
1:57:59pm

COUNTY : POLK BRIDGE : P0984 REVIEW STATUS : APPROVED NBI STATUS : P
RECORD TYPE : ROUTE CARRIED 'ON' STRUCT RUN DATE : 1/6/2017 SUBMITTAL YEAR : 2016

LOAD RATING AND POSTING INFORMATION			MATERIAL/CONSTRUCTION INFORMATION		
31	Design Load	H 10	43A	Main Struc. Mat type	CONCRETE CONTINUOUS
41	Structure Status	A - OPEN NO RESTRICTIONS	43B	Main struc Constr. Type	CULVERT
63	Oper. Rating Meth.	LOAD FACTOR	45	# of Main Spans	3
64	Operating Rating	45 Tons.	44A	Appr Struc. Mat type	
65	Inventory Rating Meth	LOAD FACTOR	44B	Appr Struc. Cnstr. type	
66	Inventory Rating	27 Tons.	46	# of Approach Span	0
70	Bridge Posting Code	=>LEGAL LOADS	107	Deck Mat/Constr.	NA
			108A	Wear Surf Mat/Constr.	NA
			108B	Membrane Mat/Constr.	NA
			108C	Deck Protect Mat/Constr.	NA
PROPOSED IMPROVEMENT INFORMATION			CONDITION RATING INFORMATION		
Sufficiency Rating 83.6 Percent			58	Deck Cond. Rating	N
Deficiency Rating NOT DEFICIENT			59	Superstructure Cond. Rating	N
Funding Eligibility			60	Substructure Cond. Rating	N
75A	Proposed Work		61	Channel /Channel Protection Cond. Rating	6
75B	Work Done By		62	Culvert Cond. Rating	6
76	New Struc Length	0 Ft. 0 In.	INSPECTION INFORMATION		
94	Struc Improve Cost	\$ 0,000	90	Gen. Insp Date	11 / 15
95	Roadway Improve Cost	\$ 0,000	91	Gen. Insp. Frequency	24 Months
96	Total Project Cost	\$ 0,000	92A	Frac. Critical Inspection	N Months
97	Year of Cost Estimates	0	93A	Frac. Critical Insp. Date	
APPRAISAL RATING INFORMATION			92B	Underwater Inspection	N Months
36A	Br. Rail App. Rating	DOES NOT MEET ACCEPT STND	93B	Underwater Insp. Date	
36B	Transition Rail App. Rating	DOES NOT MEET ACCEPT STND	92C	Special Inspection	N Months
36C	Approach Rail App. Rating	DOES NOT MEET ACCEPT STND	93C	Special Inspection Date	
36D	Rail End Treat. App. Rating	DOES NOT MEET ACCEPT STND	BORDER BRIDGE INFORMATION		
67	Struc Eval App. Rating	6	98	Neighboring State Code	
68	Deck Geometry App. Rating	5	98B	Neighboring State % Respon	
69	Underclearance App. Rating	N	99	Neighboring State Struc. No.	
71	Waterway Adeq. App. Rating	7	APPROVED POSTING INFORMATION		
72	Approach Road App. Rating	8	FIELD POSTING INFORMATION		
113	Scour Assess App. Rating	8			
Approved Posting Category S-1			Field Posting Category S-1		
Ton1 Ton2 Ton3			Ton1 Ton2 Ton3		
Tonnage Values for Posting Sign			Tonnage Values for Posting Sign		
General Text for Posting Sign			General Text for Posting Sign		
NO POSTING REQUIRED			NO POSTING REQUIRED		

Design_No = P0984



Missouri Department of Transportation
Bridge Inventory and Inspection System
Structural Inventory & Appraisal Sheet

December 2, 2024
1:57:59pm

COUNTY : POLK BRIDGE : P0984 REVIEW STATUS : APPROVED NBI STATUS : P
RECORD TYPE : ROUTE CARRIED 'ON' STRUCT RUN DATE : 3/7/2024 SUBMITTAL YEAR : 2023

GENERAL STRUCTURE INFORMATION			ROUTE DESIGNATION INFORMATION		
1	State	MISSOURI	5A	Record Type	ROUTE CARRIED 'ON' STRUCT
2	District	SW	5B	Route Signing Prefix	MO
3	County	POLK	5C	Designated Level of Service	MAINLINE
8	Federal ID No.	8020	5D	Route Number	00000
27	Year Built	1956	5E	Directional Suffix	NOT APPLICABLE
106	Year Reconstructed	0	7	Facility Carried	RT O S
42A	Type of Service On	HIGHWAY	12	Base Hwy. Network	NO
21	Structure Maintenance	STATE HIGHWAY AGENCY	13A	LRS Inventory Route No.	
22	Structure Owner	STATE HIGHWAY AGENCY	13B	Subroute No.	
33	Br. Median Code	NO MEDIAN	20	Toll Status	ON FREE ROAD
37	Historical Significance	NOT ELIGIBLE FOR NR OF HP	26	Functional Classification	08-RURAL MINOR COLLECTOR
101	Parallel Struc Desg	NONE EXISTS	28A	Lanes on Structure	02
103	Temporary Structure	NOT TEMPORARY	100	STRAHNET Designation	RTE NOT A DEFENSE HWY
112	NBIS Bridge Length	YES	104	National Highway System	NOT ON NHS
			105	Federal Lands Highway	NOT APPLICABLE
			110	Designated Nat. Network	NO
STRUCTURE LOCATION INFORMATION			STRUCTURE TRAFFIC INFORMATION		
4	Place	FLEMINGTON	29	AADT	537
	Code	24598	30	AADT Year	2023
9	Location	S 32 T 35 N R 23 W	102	Direction of Traffic	2-WAY TRAFFIC
11	Milepoint	11.46 miles	109	AADT Truck Percent	10%
16	Latitude	37 D 44 M 27 S	114	Future AADT	859
17	Longitude	93 D 29 M 9 S	115	Future AADT Year	2043
UNDERRECORD INFORMATION			STRUCTURE GEOMETRIC INFORMATION		
6	Features Intersected	ASHLOCK CR	10	Inventory Rte. Vert. Clear	99 Ft. 99 In.
42B	Type of Service Under	WATERWAY	19	By pass Detour Length	24.80 miles
28B	Lanes Under Structure	00	32	Approach Roadway Width	22 Ft. 12 In.
54A	Vert. Clearance Ref.	N/A	34	Skew	60.00 Degrees
54B	Vert. Clearance	0 Ft. 0 In.	35	Struct. Flared	NO
55A	Rt. Lat Clear Ref.	N/A	47	Total Horiz. Clear	23 Ft. 11 In.
55B	Rt. Lat Clearance	0 Ft. 0 In.	48	Maximum Span Length	12 Ft. 2 In.
56	Left Lat Clearance	0 Ft. 0 In.	49	Structure Length	74 Ft. 6 In.
38	Navigation Control	PERMIT NOT REQ	50A	Left Curb/Sidewalk Width	0 Ft. 0 In.
39	Nav Vertical Clear	0 Ft. 0 In.	50B	Right Curb/Sidewalk Width	0 Ft. 0 In.
40	Nav Horizontal Clear	0 Ft. 0 In.	51	Curb to Curb Br. Width	23 Ft. 11 In.
111	Nav. Pier Protection		52	Deck Width (Out-Out)	25 Ft. 11 In.
116	Nav. Cl. Vert. Clear		53	Vert. Clearance Over Deck	99 Ft. 99 In.

Design_No = P0984



Missouri Department of Transportation
Bridge Inventory and Inspection System
Structural Inventory & Appraisal Sheet

December 2, 2024
1:57:59pm

COUNTY : POLK BRIDGE : P0984 REVIEW STATUS : APPROVED NBI STATUS : P
RECORD TYPE : ROUTE CARRIED 'ON' STRUCT RUN DATE : 3/7/2024 SUBMITTAL YEAR : 2023

LOAD RATING AND POSTING INFORMATION			MATERIAL/CONSTRUCTION INFORMATION		
31	Design Load	H 10	43A	Main Struc. Mat type	CONCRETE CONTINUOUS
41	Structure Status	A - OPEN NO RESTRICTIONS	43B	Main struc Constr. Type	CULVERT
63	Oper. Rating Meth.	LOAD FACTOR	45	# of Main Spans	3
64	Operating Rating	45 Tons.	44A	Appr Struc. Mat type	
65	Inventory Rating Meth	LOAD FACTOR	44B	Appr Struc. Cnstr. type	
66	Inventory Rating	27 Tons.	46	# of Approach Span	0
70	Bridge Posting Code	=>LEGAL LOADS	107	Deck Mat/Constr.	NA
PROPOSED IMPROVEMENT INFORMATION			108A	Wear Surf Mat/Constr.	NA
Sufficiency Rating 65.9 Percent			108B	Membrane Mat/Constr.	NA
Deficiency Rating NOT DEFICIENT			108C	Deck Protect Mat/Constr.	NA
Funding Eligibility			CONDITION RATING INFORMATION		
75A	Proposed Work		58	Deck Cond. Rating	N
75B	Work Done By		59	Superstructure Cond. Rating	N
76	New Struc Length	0 Ft. 0 In.	60	Substructure Cond. Rating	N
94	Struc Improve Cost	\$ 0,000	61	Channel /Channel Protection Cond. Rating	4
95	Roadway Improve Cost	\$ 0,000	62	Culvert Cond. Rating	5
96	Total Project Cost	\$ 0,000	INSPECTION INFORMATION		
97	Year of Cost Estimates	0	90	Gen. Insp Date	11 / 23
APPRAISAL RATING INFORMATION			91	Gen. Insp. Frequency	24 Months
36A	Br. Rail App. Rating	DOES NOT MEET ACCEPT STND	92A	Frac. Critical Inspection	N Months
36B	Transition Rail App. Rating	DOES NOT MEET ACCEPT STND	93A	Frac. Critical Insp. Date	
36C	Approach Rail App. Rating	DOES NOT MEET ACCEPT STND	92B	Underwater Inspection	N Months
36D	Rail End Treat. App. Rating	DOES NOT MEET ACCEPT STND	93B	Underwater Insp. Date	
67	Struc Eval App. Rating	5	92C	Special Inspection	N Months
68	Deck Geometry App. Rating	4	93C	Special Inspection Date	
69	Underclearance App. Rating	N	BORDER BRIDGE INFORMATION		
71	Waterway Adeq. App. Rating	7	98	Neighboring State Code	
72	Approach Road App. Rating	8	98B	Neighboring State % Respon	
113	Scour Assess App. Rating	5	99	Neighboring State Struc. No.	
APPROVED POSTING INFORMATION			FIELD POSTING INFORMATION		
Approved Posting Category S-1			Field Posting Category S-1		
Ton1 Ton2 Ton3			Ton1 Ton2 Ton3		
Tonnage Values for Posting Sign			Tonnage Values for Posting Sign		
General Text for Posting Sign			General Text for Posting Sign		
NO POSTING REQUIRED			NO POSTING REQUIRED		

Design_No = P0984



Missouri Department of Transportation
Bridge Inventory and Inspection System
Structural Inventory & Appraisal Sheet

December 2, 2024
1:57:59pm

COUNTY : POLK BRIDGE : P0984 REVIEW STATUS : APPROVED NBI STATUS : P
RECORD TYPE : ROUTE CARRIED 'ON' STRUCT RUN DATE : 2/24/2004 SUBMITTAL YEAR : 2003

GENERAL STRUCTURE INFORMATION			ROUTE DESIGNATION INFORMATION		
1	State	MISSOURI	5A	Record Type	ROUTE CARRIED 'ON' STRUCT
2	District	SW	5B	Route Signing Prefix	MO
3	County	POLK	5C	Designated Level of Service	MAINLINE
8	Federal ID No.	8020	5D	Route Number	00000
27	Year Built	1956	5E	Directional Suffix	NOT APPLICABLE
106	Year Reconstructed	0	7	Facility Carried	RT O S
42A	Type of Service On	HIGHWAY	12	Base Hwy. Network	NO
21	Structure Maintenance	STATE HIGHWAY AGENCY	13A	LRS Inventory Route No.	
22	Structure Owner	STATE HIGHWAY AGENCY	13B	Subroute No.	
33	Br. Median Code	NO MEDIAN	20	Toll Status	ON FREE ROAD
37	Historical Significance	NOT ELIGIBLE FOR NR OF HP	26	Functional Classification	08-RURAL MINOR COLLECTOR
101	Parallel Struc Desg	NONE EXISTS	28A	Lanes on Structure	02
103	Temporary Structure	NOT TEMPORARY	100	STRAHNET Designation	RTE NOT A DEFENSE HWY
112	NBIS Bridge Length	YES	104	National Highway System	NOT ON NHS
			105	Federal Lands Highway	NOT APPLICABLE
			110	Designated Nat. Network	NO
STRUCTURE LOCATION INFORMATION			STRUCTURE TRAFFIC INFORMATION		
4	Place	FLEMINGTON	29	AADT	508
	Code	24598	30	AADT Year	2002
9	Location	S 32 T 35N R 23W	102	Direction of Traffic	2-WAY TRAFFIC
11	Milepoint	11.54 miles	109	AADT Truck Percent	10%
16	Latitude	37 D 44 M 24 S	114	Future AADT	812
17	Longitude	93 D 29 M 6 S	115	Future AADT Year	2024
UNDERRECORD INFORMATION			STRUCTURE GEOMETRIC INFORMATION		
6	Features Intersected	ASHLOCK CR	10	Inventory Rte. Vert. Clear	99 Ft. 99 In.
42B	Type of Service Under	WATERWAY	19	By pass Detour Length	24.80 miles
28B	Lanes Under Structure	00	32	Approach Roadway Width	22 Ft. 12 In.
54A	Vert. Clearance Ref.	N/A	34	Skew	60.00 Degrees
54B	Vert. Clearance	0 Ft. 0 In.	35	Struct. Flared	NO
55A	Rt. Lat Clear Ref.	N/A	47	Total Horiz. Clear	23 Ft. 11 In.
55B	Rt. Lat Clearance	0 Ft. 0 In.	48	Maximum Span Length	12 Ft. 2 In.
56	Left Lat Clearance	0 Ft. 0 In.	49	Structure Length	74 Ft. 6 In.
38	Navigation Control	PERMIT NOT REQ	50A	Left Curb/Sidewalk Width	0 Ft. 0 In.
39	Nav Vertical Clear	0 Ft. 0 In.	50B	Right Curb/Sidewalk Width	0 Ft. 0 In.
40	Nav Horizontal Clear	0 Ft. 0 In.	51	Curb to Curb Br. Width	23 Ft. 11 In.
111	Nav. Pier Protection		52	Deck Width (Out-Out)	25 Ft. 11 In.
116	Nav. Cl. Vert. Clear		53	Vert. Clearance Over Deck	99 Ft. 99 In.

Design_No = P0984



Missouri Department of Transportation
Bridge Inventory and Inspection System
Structural Inventory & Appraisal Sheet

December 2, 2024
1:57:59pm

COUNTY : POLK BRIDGE : P0984 REVIEW STATUS : APPROVED NBI STATUS : P
RECORD TYPE : ROUTE CARRIED 'ON' STRUCT RUN DATE : 2/24/2004 SUBMITTAL YEAR : 2003

LOAD RATING AND POSTING INFORMATION			MATERIAL/CONSTRUCTION INFORMATION		
31	Design Load	H 10	43A	Main Struc. Mat type	CONCRETE CONTINUOUS
41	Structure Status	A - OPEN NO RESTRICTIONS	43B	Main struc Constr. Type	CULVERT
63	Oper. Rating Meth.	NO RATING ANALYSIS PERFM	45	# of Main Spans	3
64	Operating Rating	55 Tons.	44A	Appr Struc. Mat type	
65	Inventory Rating Meth	NO RATING ANALYSIS PERFM	44B	Appr Struc. Cnstr. type	
66	Inventory Rating	17 Tons.	46	# of Approach Span	0
70	Bridge Posting Code	=>LEGAL LOADS	107	Deck Mat/Constr.	NA
			108A	Wear Surf Mat/Constr.	NA
			108B	Membrane Mat/Constr.	NA
			108C	Deck Protect Mat/Constr.	NA
PROPOSED IMPROVEMENT INFORMATION			CONDITION RATING INFORMATION		
Sufficiency Rating		62.3 Percent	58	Deck Cond. Rating	N
Deficiency Rating		NOT DEFICIENT	59	Superstructure Cond. Rating	N
Funding Eligibility			60	Substructure Cond. Rating	N
75A	Proposed Work		61	Channel /Channel Protection Cond. Rating	6
75B	Work Done By		62	Culvert Cond. Rating	6
76	New Struc Length	0 Ft. 0 In.	INSPECTION INFORMATION		
94	Struc Improve Cost	\$ 0,000	90	Gen. Insp Date	12 / 03
95	Roadway Improve Cost	\$ 0,000	91	Gen. Insp. Frequency	24 Months
96	Total Project Cost	\$ 0,000	92A	Frac. Critical Inspection	N Months
97	Year of Cost Estimates	0	93A	Frac. Critical Insp. Date	
APPRAISAL RATING INFORMATION			92B	Underwater Inspection	N Months
36A	Br. Rail App. Rating	MEETS ACCEPTBLE STND	93B	Underwater Insp. Date	
36B	Transition Rail App. Rating	MEETS ACCEPTBLE STND	92C	Special Inspection	N Months
36C	Approach Rail App. Rating	MEETS ACCEPTBLE STND	93C	Special Inspection Date	
36D	Rail End Treat. App. Rating	MEETS ACCEPTBLE STND	BORDER BRIDGE INFORMATION		
67	Struc Eval App. Rating	4	98	Neighboring State Code	
68	Deck Geometry App. Rating	4	98B	Neighboring State % Respon	
69	Underclearance App. Rating	N	99	Neighboring State Struc. No.	
71	Waterway Adeq. App. Rating	7	APPROVED POSTING INFORMATION		
72	Approach Road App. Rating	8	FIELD POSTING INFORMATION		
113	Scour Assess App. Rating	8			
APPROVED POSTING INFORMATION			FIELD POSTING INFORMATION		
Approved Posting Category		S-1	Field Posting Category		S-1
		Ton1 Ton2 Ton3			Ton1 Ton2 Ton3
Tonnage Values for Posting Sign			Tonnage Values for Posting Sign		
General Text for Posting Sign			General Text for Posting Sign		
NO POSTING REQUIRED			NO POSTING REQUIRED		

Design_No = P0984



Missouri Department of Transportation
Bridge Inventory and Inspection System
Structural Inventory & Appraisal Sheet

December 2, 2024
1:57:59pm

COUNTY : POLK BRIDGE : P0984 REVIEW STATUS : APPROVED NBI STATUS : P
RECORD TYPE : ROUTE CARRIED 'ON' STRUCT RUN DATE : 1/26/2010 SUBMITTAL YEAR : 2009

GENERAL STRUCTURE INFORMATION			ROUTE DESIGNATION INFORMATION		
1	State	MISSOURI	5A	Record Type	ROUTE CARRIED 'ON' STRUCT
2	District	SW	5B	Route Signing Prefix	MO
3	County	POLK	5C	Designated Level of Service	MAINLINE
8	Federal ID No.	8020	5D	Route Number	00000
27	Year Built	1956	5E	Directional Suffix	NOT APPLICABLE
106	Year Reconstructed	0	7	Facility Carried	RT O S
42A	Type of Service On	HIGHWAY	12	Base Hwy. Network	NO
21	Structure Maintenance	STATE HIGHWAY AGENCY	13A	LRS Inventory Route No.	
22	Structure Owner	STATE HIGHWAY AGENCY	13B	Subroute No.	
33	Br. Median Code	NO MEDIAN	20	Toll Status	ON FREE ROAD
37	Historical Significance	NOT ELIGIBLE FOR NR OF HP	26	Functional Classification	08-RURAL MINOR COLLECTOR
101	Parallel Struc Desg	NONE EXISTS	28A	Lanes on Structure	02
103	Temporary Structure	NOT TEMPORARY	100	STRAHNET Designation	RTE NOT A DEFENSE HWY
112	NBIS Bridge Length	YES	104	National Highway System	NOT ON NHS
			105	Federal Lands Highway	NOT APPLICABLE
			110	Designated Nat. Network	NO
STRUCTURE LOCATION INFORMATION			STRUCTURE TRAFFIC INFORMATION		
4	Place	FLEMINGTON	29	AADT	452
	Code	24598	30	AADT Year	2008
9	Location	S 32 T 35 N R 23 W	102	Direction of Traffic	2-WAY TRAFFIC
11	Milepoint	11.46 miles	109	AADT Truck Percent	10%
16	Latitude	37 D 44 M 24 S	114	Future AADT	723
17	Longitude	93 D 29 M 6 S	115	Future AADT Year	2030
UNDERRECORD INFORMATION			STRUCTURE GEOMETRIC INFORMATION		
6	Features Intersected	ASHLOCK CR	10	Inventory Rte. Vert. Clear	99 Ft. 99 In.
42B	Type of Service Under	WATERWAY	19	By pass Detour Length	24.80 miles
28B	Lanes Under Structure	00	32	Approach Roadway Width	22 Ft. 12 In.
54A	Vert. Clearance Ref.	N/A	34	Skew	60.00 Degrees
54B	Vert. Clearance	0 Ft. 0 In.	35	Struct. Flared	NO
55A	Rt. Lat Clear Ref.	N/A	47	Total Horiz. Clear	23 Ft. 11 In.
55B	Rt. Lat Clearance	0 Ft. 0 In.	48	Maximum Span Length	12 Ft. 2 In.
56	Left Lat Clearance	0 Ft. 0 In.	49	Structure Length	74 Ft. 6 In.
38	Navigation Control	PERMIT NOT REQ	50A	Left Curb/Sidewalk Width	0 Ft. 0 In.
39	Nav Vertical Clear	0 Ft. 0 In.	50B	Right Curb/Sidewalk Width	0 Ft. 0 In.
40	Nav Horizontal Clear	0 Ft. 0 In.	51	Curb to Curb Br. Width	23 Ft. 11 In.
111	Nav. Pier Protection		52	Deck Width (Out-Out)	25 Ft. 11 In.
116	Nav. Cl. Vert. Clear		53	Vert. Clearance Over Deck	99 Ft. 99 In.

Design_No = P0984



Missouri Department of Transportation
Bridge Inventory and Inspection System
Structural Inventory & Appraisal Sheet

December 2, 2024
1:57:59pm

COUNTY : POLK BRIDGE : P0984 REVIEW STATUS : APPROVED NBI STATUS : P
RECORD TYPE : ROUTE CARRIED 'ON' STRUCT RUN DATE : 1/26/2010 SUBMITTAL YEAR : 2009

LOAD RATING AND POSTING INFORMATION			MATERIAL/CONSTRUCTION INFORMATION		
31	Design Load	H 10	43A	Main Struc. Mat type	CONCRETE CONTINUOUS
41	Structure Status	A - OPEN NO RESTRICTIONS	43B	Main struc Constr. Type	CULVERT
63	Oper. Rating Meth.	NO RATING ANALYSIS PERFMD	45	# of Main Spans	3
64	Operating Rating	55 Tons.	44A	Appr Struc. Mat type	
65	Inventory Rating Meth	NO RATING ANALYSIS PERFMD	44B	Appr Struc. Cnstr. type	
66	Inventory Rating	17 Tons.	46	# of Approach Span	0
70	Bridge Posting Code	=>LEGAL LOADS	107	Deck Mat/Constr.	NA
PROPOSED IMPROVEMENT INFORMATION			108A	Wear Surf Mat/Constr.	NA
Sufficiency Rating 62.5 Percent			108B	Membrane Mat/Constr.	NA
Deficiency Rating NOT DEFICIENT			108C	Deck Protect Mat/Constr.	NA
Funding Eligibility			CONDITION RATING INFORMATION		
75A	Proposed Work		58	Deck Cond. Rating	N
75B	Work Done By		59	Superstructure Cond. Rating	N
76	New Struc Length	0 Ft. 0 In.	60	Substructure Cond. Rating	N
94	Struc Improve Cost	\$ 0,000	61	Channel /Channel Protection Cond. Rating	6
95	Roadway Improve Cost	\$ 0,000	62	Culvert Cond. Rating	6
96	Total Project Cost	\$ 0,000	INSPECTION INFORMATION		
97	Year of Cost Estimates	0	90	Gen. Insp Date	11 / 09
APPRAISAL RATING INFORMATION			91	Gen. Insp. Frequency	24 Months
36A	Br. Rail App. Rating	NOT APPLICABLE	92A	Frac. Critical Inspection	N Months
36B	Transition Rail App. Rating	NOT APPLICABLE	93A	Frac. Critical Insp. Date	
36C	Approach Rail App. Rating	NOT APPLICABLE	92B	Underwater Inspection	N Months
36D	Rail End Treat. App. Rating	NOT APPLICABLE	93B	Underwater Insp. Date	
67	Struc Eval App. Rating	4	92C	Special Inspection	N Months
68	Deck Geometry App. Rating	4	93C	Special Inspection Date	
69	Underclearance App. Rating	N	BORDER BRIDGE INFORMATION		
71	Waterway Adeq. App. Rating	7	98	Neighboring State Code	
72	Approach Road App. Rating	8	98B	Neighboring State % Respon	
113	Scour Assess App. Rating	8	99	Neighboring State Struc. No.	
APPROVED POSTING INFORMATION			FIELD POSTING INFORMATION		
Approved Posting Category S-1			Field Posting Category S-1		
Ton1 Ton2 Ton3			Ton1 Ton2 Ton3		
Tonnage Values for Posting Sign			Tonnage Values for Posting Sign		
General Text for Posting Sign			General Text for Posting Sign		
NO POSTING REQUIRED			NO POSTING REQUIRED		

Design_No = P0984



Missouri Department of Transportation
Bridge Inventory and Inspection System
Structural Inventory & Appraisal Sheet

December 2, 2024
1:57:59pm

COUNTY : POLK BRIDGE : P0984 REVIEW STATUS : APPROVED NBI STATUS : P
RECORD TYPE : ROUTE CARRIED 'ON' STRUCT RUN DATE : 1/21/2021 SUBMITTAL YEAR : 2020

GENERAL STRUCTURE INFORMATION			ROUTE DESIGNATION INFORMATION		
1	State	MISSOURI	5A	Record Type	ROUTE CARRIED 'ON' STRUCT
2	District	SW	5B	Route Signing Prefix	MO
3	County	POLK	5C	Designated Level of Service	MAINLINE
8	Federal ID No.	8020	5D	Route Number	00000
27	Year Built	1956	5E	Directional Suffix	NOT APPLICABLE
106	Year Reconstructed	0	7	Facility Carried	RT O S
42A	Type of Service On	HIGHWAY	12	Base Hwy. Network	NO
21	Structure Maintenance	STATE HIGHWAY AGENCY	13A	LRS Inventory Route No.	
22	Structure Owner	STATE HIGHWAY AGENCY	13B	Subroute No.	
33	Br. Median Code	NO MEDIAN	20	Toll Status	ON FREE ROAD
37	Historical Significance	NOT ELIGIBLE FOR NR OF HP	26	Functional Classification	08-RURAL MINOR COLLECTOR
101	Parallel Struc Desg	NONE EXISTS	28A	Lanes on Structure	02
103	Temporary Structure	NOT TEMPORARY	100	STRAHNET Designation	RTE NOT A DEFENSE HWY
112	NBIS Bridge Length	YES	104	National Highway System	NOT ON NHS
			105	Federal Lands Highway	NOT APPLICABLE
			110	Designated Nat. Network	NO
STRUCTURE LOCATION INFORMATION			STRUCTURE TRAFFIC INFORMATION		
4	Place	FLEMINGTON	29	AADT	532
	Code	24598	30	AADT Year	2019
9	Location	S 32 T 35 N R 23 W	102	Direction of Traffic	2-WAY TRAFFIC
11	Milepoint	11.46 miles	109	AADT Truck Percent	9%
16	Latitude	37 D 44 M 27 S	114	Future AADT	851
17	Longitude	93 D 29 M 9 S	115	Future AADT Year	2039
UNDERRECORD INFORMATION			STRUCTURE GEOMETRIC INFORMATION		
6	Features Intersected	ASHLOCK CR	10	Inventory Rte. Vert. Clear	99 Ft. 99 In.
42B	Type of Service Under	WATERWAY	19	By pass Detour Length	24.80 miles
28B	Lanes Under Structure	00	32	Approach Roadway Width	22 Ft. 12 In.
54A	Vert. Clearance Ref.	N/A	34	Skew	60.00 Degrees
54B	Vert. Clearance	0 Ft. 0 In.	35	Struct. Flared	NO
55A	Rt. Lat Clear Ref.	N/A	47	Total Horiz. Clear	23 Ft. 11 In.
55B	Rt. Lat Clearance	0 Ft. 0 In.	48	Maximum Span Length	12 Ft. 2 In.
56	Left Lat Clearance	0 Ft. 0 In.	49	Structure Length	74 Ft. 6 In.
38	Navigation Control	PERMIT NOT REQ	50A	Left Curb/Sidewalk Width	0 Ft. 0 In.
39	Nav Vertical Clear	0 Ft. 0 In.	50B	Right Curb/Sidewalk Width	0 Ft. 0 In.
40	Nav Horizontal Clear	0 Ft. 0 In.	51	Curb to Curb Br. Width	23 Ft. 11 In.
111	Nav. Pier Protection		52	Deck Width (Out-Out)	25 Ft. 11 In.
116	Nav. Cl. Vert. Clear		53	Vert. Clearance Over Deck	99 Ft. 99 In.

Design_No = P0984



Missouri Department of Transportation
Bridge Inventory and Inspection System
Structural Inventory & Appraisal Sheet

December 2, 2024
1:57:59pm

COUNTY : POLK BRIDGE : P0984 REVIEW STATUS : APPROVED NBI STATUS : P
RECORD TYPE : ROUTE CARRIED 'ON' STRUCT RUN DATE : 1/21/2021 SUBMITTAL YEAR : 2020

LOAD RATING AND POSTING INFORMATION			MATERIAL/CONSTRUCTION INFORMATION		
31	Design Load	H 10	43A	Main Struc. Mat type	CONCRETE CONTINUOUS
41	Structure Status	A - OPEN NO RESTRICTIONS	43B	Main struc Constr. Type	CULVERT
63	Oper. Rating Meth.	LOAD FACTOR	45	# of Main Spans	3
64	Operating Rating	45 Tons.	44A	Appr Struc. Mat type	
65	Inventory Rating Meth	LOAD FACTOR	44B	Appr Struc. Cnstr. type	
66	Inventory Rating	27 Tons.	46	# of Approach Span	0
70	Bridge Posting Code	=>LEGAL LOADS	107	Deck Mat/Constr.	NA
PROPOSED IMPROVEMENT INFORMATION			108A	Wear Surf Mat/Constr.	NA
Sufficiency Rating 66.0 Percent			108B	Membrane Mat/Constr.	NA
Deficiency Rating NOT DEFICIENT			108C	Deck Protect Mat/Constr.	NA
Funding Eligibility			CONDITION RATING INFORMATION		
75A	Proposed Work		58	Deck Cond. Rating	N
75B	Work Done By		59	Superstructure Cond. Rating	N
76	New Struc Length	0 Ft. 0 In.	60	Substructure Cond. Rating	N
94	Struc Improve Cost	\$ 0,000	61	Channel /Channel Protection Cond. Rating	4
95	Roadway Improve Cost	\$ 0,000	62	Culvert Cond. Rating	5
96	Total Project Cost	\$ 0,000	INSPECTION INFORMATION		
97	Year of Cost Estimates	0	90	Gen. Insp Date	11 / 19
APPRAISAL RATING INFORMATION			91	Gen. Insp. Frequency	24 Months
36A	Br. Rail App. Rating	DOES NOT MEET ACCEPT STND	92A	Frac. Critical Inspection	N Months
36B	Transition Rail App. Rating	DOES NOT MEET ACCEPT STND	93A	Frac. Critical Insp. Date	
36C	Approach Rail App. Rating	DOES NOT MEET ACCEPT STND	92B	Underwater Inspection	N Months
36D	Rail End Treat. App. Rating	DOES NOT MEET ACCEPT STND	93B	Underwater Insp. Date	
67	Struc Eval App. Rating	5	92C	Special Inspection	N Months
68	Deck Geometry App. Rating	4	93C	Special Inspection Date	
69	Underclearance App. Rating	N	BORDER BRIDGE INFORMATION		
71	Waterway Adeq. App. Rating	7	98	Neighboring State Code	
72	Approach Road App. Rating	8	98B	Neighboring State % Respon	
113	Scour Assess App. Rating	5	99	Neighboring State Struc. No.	
APPROVED POSTING INFORMATION			FIELD POSTING INFORMATION		
Approved Posting Category S-1			Field Posting Category S-1		
Ton1 Ton2 Ton3			Ton1 Ton2 Ton3		
Tonnage Values for Posting Sign			Tonnage Values for Posting Sign		
General Text for Posting Sign			General Text for Posting Sign		
NO POSTING REQUIRED			NO POSTING REQUIRED		

Design_No = P0984



Missouri Department of Transportation
Bridge Inventory and Inspection System
Structural Inventory & Appraisal Sheet

December 2, 2024
1:57:59pm

COUNTY : POLK BRIDGE : P0984 REVIEW STATUS : APPROVED NBI STATUS : P
RECORD TYPE : ROUTE CARRIED 'ON' STRUCT RUN DATE : 3/9/2022 SUBMITTAL YEAR : 2021

GENERAL STRUCTURE INFORMATION			ROUTE DESIGNATION INFORMATION		
1	State	MISSOURI	5A	Record Type	ROUTE CARRIED 'ON' STRUCT
2	District	SW	5B	Route Signing Prefix	MO
3	County	POLK	5C	Designated Level of Service	MAINLINE
8	Federal ID No.	8020	5D	Route Number	00000
27	Year Built	1956	5E	Directional Suffix	NOT APPLICABLE
106	Year Reconstructed	0	7	Facility Carried	RT O S
42A	Type of Service On	HIGHWAY	12	Base Hwy. Network	NO
21	Structure Maintenance	STATE HIGHWAY AGENCY	13A	LRS Inventory Route No.	
22	Structure Owner	STATE HIGHWAY AGENCY	13B	Subroute No.	
33	Br. Median Code	NO MEDIAN	20	Toll Status	ON FREE ROAD
37	Historical Significance	NOT ELIGIBLE FOR NR OF HP	26	Functional Classification	08-RURAL MINOR COLLECTOR
101	Parallel Struc Desg	NONE EXISTS	28A	Lanes on Structure	02
103	Temporary Structure	NOT TEMPORARY	100	STRAHNET Designation	RTE NOT A DEFENSE HWY
112	NBIS Bridge Length	YES	104	National Highway System	NOT ON NHS
			105	Federal Lands Highway	NOT APPLICABLE
			110	Designated Nat. Network	NO
STRUCTURE LOCATION INFORMATION			STRUCTURE TRAFFIC INFORMATION		
4	Place	FLEMINGTON	29	AADT	537
	Code	24598	30	AADT Year	2021
9	Location	S 32 T 35 N R 23 W	102	Direction of Traffic	2-WAY TRAFFIC
11	Milepoint	11.46 miles	109	AADT Truck Percent	10%
16	Latitude	37 D 44 M 27 S	114	Future AADT	859
17	Longitude	93 D 29 M 9 S	115	Future AADT Year	2041
UNDERRECORD INFORMATION			STRUCTURE GEOMETRIC INFORMATION		
6	Features Intersected	ASHLOCK CR	10	Inventory Rte. Vert. Clear	99 Ft. 99 In.
42B	Type of Service Under	WATERWAY	19	By pass Detour Length	24.80 miles
28B	Lanes Under Structure	00	32	Approach Roadway Width	22 Ft. 12 In.
54A	Vert. Clearance Ref.	N/A	34	Skew	60.00 Degrees
54B	Vert. Clearance	0 Ft. 0 In.	35	Struct. Flared	NO
55A	Rt. Lat Clear Ref.	N/A	47	Total Horiz. Clear	23 Ft. 11 In.
55B	Rt. Lat Clearance	0 Ft. 0 In.	48	Maximum Span Length	12 Ft. 2 In.
56	Left Lat Clearance	0 Ft. 0 In.	49	Structure Length	74 Ft. 6 In.
38	Navigation Control	PERMIT NOT REQ	50A	Left Curb/Sidewalk Width	0 Ft. 0 In.
39	Nav Vertical Clear	0 Ft. 0 In.	50B	Right Curb/Sidewalk Width	0 Ft. 0 In.
40	Nav Horizontal Clear	0 Ft. 0 In.	51	Curb to Curb Br. Width	23 Ft. 11 In.
111	Nav. Pier Protection		52	Deck Width (Out-Out)	25 Ft. 11 In.
116	Nav. Cl. Vert. Clear		53	Vert. Clearance Over Deck	99 Ft. 99 In.

Design_No = P0984



Missouri Department of Transportation
Bridge Inventory and Inspection System
Structural Inventory & Appraisal Sheet

December 2, 2024
1:57:59pm

COUNTY : POLK BRIDGE : P0984 REVIEW STATUS : APPROVED NBI STATUS : P
RECORD TYPE : ROUTE CARRIED 'ON' STRUCT RUN DATE : 3/9/2022 SUBMITTAL YEAR : 2021

LOAD RATING AND POSTING INFORMATION			MATERIAL/CONSTRUCTION INFORMATION		
31	Design Load	H 10	43A	Main Struc. Mat type	CONCRETE CONTINUOUS
41	Structure Status	A - OPEN NO RESTRICTIONS	43B	Main struc Constr. Type	CULVERT
63	Oper. Rating Meth.	LOAD FACTOR	45	# of Main Spans	3
64	Operating Rating	45 Tons.	44A	Appr Struc. Mat type	
65	Inventory Rating Meth	LOAD FACTOR	44B	Appr Struc. Cnstr. type	
66	Inventory Rating	27 Tons.	46	# of Approach Span	0
70	Bridge Posting Code	=>LEGAL LOADS	107	Deck Mat/Constr.	NA
PROPOSED IMPROVEMENT INFORMATION			108A	Wear Surf Mat/Constr.	NA
Sufficiency Rating 65.9 Percent			108B	Membrane Mat/Constr.	NA
Deficiency Rating NOT DEFICIENT			108C	Deck Protect Mat/Constr.	NA
Funding Eligibility			CONDITION RATING INFORMATION		
75A	Proposed Work		58	Deck Cond. Rating	N
75B	Work Done By		59	Superstructure Cond. Rating	N
76	New Struc Length	0 Ft. 0 In.	60	Substructure Cond. Rating	N
94	Struc Improve Cost	\$ 0,000	61	Channel /Channel Protection Cond. Rating	4
95	Roadway Improve Cost	\$ 0,000	62	Culvert Cond. Rating	5
96	Total Project Cost	\$ 0,000	INSPECTION INFORMATION		
97	Year of Cost Estimates	0	90	Gen. Insp Date	11 / 21
APPRAISAL RATING INFORMATION			91	Gen. Insp. Frequency	24 Months
36A	Br. Rail App. Rating	DOES NOT MEET ACCEPT STND	92A	Frac. Critical Inspection	N Months
36B	Transition Rail App. Rating	DOES NOT MEET ACCEPT STND	93A	Frac. Critical Insp. Date	
36C	Approach Rail App. Rating	DOES NOT MEET ACCEPT STND	92B	Underwater Inspection	N Months
36D	Rail End Treat. App. Rating	DOES NOT MEET ACCEPT STND	93B	Underwater Insp. Date	
67	Struc Eval App. Rating	5	92C	Special Inspection	N Months
68	Deck Geometry App. Rating	4	93C	Special Inspection Date	
69	Underclearance App. Rating	N	BORDER BRIDGE INFORMATION		
71	Waterway Adeq. App. Rating	7	98	Neighboring State Code	
72	Approach Road App. Rating	8	98B	Neighboring State % Respon	
113	Scour Assess App. Rating	5	99	Neighboring State Struc. No.	
APPROVED POSTING INFORMATION			FIELD POSTING INFORMATION		
Approved Posting Category S-1			Field Posting Category S-1		
Ton1 Ton2 Ton3			Ton1 Ton2 Ton3		
Tonnage Values for Posting Sign			Tonnage Values for Posting Sign		
General Text for Posting Sign			General Text for Posting Sign		
NO POSTING REQUIRED			NO POSTING REQUIRED		

Design_No = P0984



Missouri Department of Transportation
Bridge Inventory and Inspection System
Structural Inventory & Appraisal Sheet

December 2, 2024
1:57:59pm

COUNTY : POLK BRIDGE : P0984 REVIEW STATUS : APPROVED NBI STATUS : P
RECORD TYPE : ROUTE CARRIED 'ON' STRUCT RUN DATE : 2/19/2016 SUBMITTAL YEAR : 2015

GENERAL STRUCTURE INFORMATION

1	State	MISSOURI
2	District	SW
3	County	POLK
8	Federal ID No.	8020
27	Year Built	1956
106	Year Reconstructed	0
42A	Type of Service On	HIGHWAY
21	Structure Maintenance	STATE HIGHWAY AGENCY
22	Structure Owner	STATE HIGHWAY AGENCY
33	Br. Median Code	NO MEDIAN
37	Historical Significance	NOT ELIGIBLE FOR NR OF HP
101	Parallel Struc Desg	NONE EXISTS
103	Temporary Structure	NOT TEMPORARY
112	NBIS Bridge Length	YES

ROUTE DESIGNATION INFORMATION

5A	Record Type	ROUTE CARRIED 'ON' STRUCT
5B	Route Signing Prefix	MO
5C	Designated Level of Service	MAINLINE
5D	Route Number	00000
5E	Directional Suffix	NOT APPLICABLE
7	Facility Carried	RT O S
12	Base Hwy. Network	NO
13A	LRS Inventory Route No.	
13B	Subroute No.	
20	Toll Status	ON FREE ROAD
26	Functional Classification	08-RURAL MINOR COLLECTOR
28A	Lanes on Structure	02
100	STRAHNET Designation	RTE NOT A DEFENSE HWY
104	National Highway System	NOT ON NHS
105	Federal Lands Highway	NOT APPLICABLE
110	Designated Nat. Network	NO

STRUCTURE LOCATION INFORMATION

4	Place	FLEMINGTON
	Code	24598
9	Location	S 32 T 35 N R 23 W
11	Milepoint	11.46 miles
16	Latitude	37 D 44 M 27 S
17	Longitude	93 D 29 M 9 S

STRUCTURE TRAFFIC INFORMATION

29	AADT	372
30	AADT Year	2015
102	Direction of Traffic	2-WAY TRAFFIC
109	AADT Truck Percent	11%
114	Future AADT	595
115	Future AADT Year	2036

UNDERRECORD INFORMATION

6	Features Intersected	ASHLOCK CR
42B	Type of Service Under	WATERWAY
28B	Lanes Under Structure	00
54A	Vert. Clearance Ref.	N/A
54B	Vert. Clearance	0 Ft. 0 In.
55A	Rt. Lat Clear Ref.	N/A
55B	Rt. Lat Clearance	0 Ft. 0 In.
56	Left Lat Clearance	0 Ft. 0 In.
38	Navigation Control	PERMIT NOT REQ
39	Nav Vertical Clear	0 Ft. 0 In.
40	Nav Horizontal Clear	0 Ft. 0 In.
111	Nav. Pier Protection	
116	Nav. Cl. Vert. Clear	

STRUCTURE GEOMETRIC INFORMATION

10	Inventory Rte. Vert. Clear	99 Ft. 99 In.
19	By pass Detour Length	24.80 miles
32	Approach Roadway Width	22 Ft. 12 In.
34	Skew	60.00 Degrees
35	Struct. Flared	NO
47	Total Horiz. Clear	23 Ft. 11 In.
48	Maximum Span Length	12 Ft. 2 In.
49	Structure Length	74 Ft. 6 In.
50A	Left Curb/Sidewalk Width	0 Ft. 0 In.
50B	Right Curb/Sidewalk Width	0 Ft. 0 In.
51	Curb to Curb Br. Width	23 Ft. 11 In.
52	Deck Width (Out-Out)	25 Ft. 11 In.
53	Vert. Clearance Over Deck	99 Ft. 99 In.

Design_No = P0984



Missouri Department of Transportation
Bridge Inventory and Inspection System
Structural Inventory & Appraisal Sheet

December 2, 2024
1:57:59pm

COUNTY : POLK BRIDGE : P0984 REVIEW STATUS : APPROVED NBI STATUS : P
RECORD TYPE : ROUTE CARRIED 'ON' STRUCT RUN DATE : 2/19/2016 SUBMITTAL YEAR : 2015

LOAD RATING AND POSTING INFORMATION			MATERIAL/CONSTRUCTION INFORMATION		
31	Design Load	H 10	43A	Main Struc. Mat type	CONCRETE CONTINUOUS
41	Structure Status	A - OPEN NO RESTRICTIONS	43B	Main struc Constr. Type	CULVERT
63	Oper. Rating Meth.	LOAD FACTOR	45	# of Main Spans	3
64	Operating Rating	45 Tons.	44A	Appr Struc. Mat type	
65	Inventory Rating Meth	LOAD FACTOR	44B	Appr Struc. Cnstr. type	
66	Inventory Rating	27 Tons.	46	# of Approach Span	0
70	Bridge Posting Code	=>LEGAL LOADS	107	Deck Mat/Constr.	NA
PROPOSED IMPROVEMENT INFORMATION			108A	Wear Surf Mat/Constr.	NA
Sufficiency Rating 78.6 Percent			108B	Membrane Mat/Constr.	NA
Deficiency Rating NOT DEFICIENT			108C	Deck Protect Mat/Constr.	NA
Funding Eligibility			CONDITION RATING INFORMATION		
75A	Proposed Work		58	Deck Cond. Rating	N
75B	Work Done By		59	Superstructure Cond. Rating	N
76	New Struc Length	0 Ft. 0 In.	60	Substructure Cond. Rating	N
94	Struc Improve Cost	\$ 0,000	61	Channel /Channel Protection Cond. Rating	6
95	Roadway Improve Cost	\$ 0,000	62	Culvert Cond. Rating	6
96	Total Project Cost	\$ 0,000	INSPECTION INFORMATION		
97	Year of Cost Estimates	0	90	Gen. Insp Date	11 / 15
APPRAISAL RATING INFORMATION			91	Gen. Insp. Frequency	24 Months
36A	Br. Rail App. Rating	DOES NOT MEET ACCEPT STND	92A	Frac. Critical Inspection	N Months
36B	Transition Rail App. Rating	DOES NOT MEET ACCEPT STND	93A	Frac. Critical Insp. Date	
36C	Approach Rail App. Rating	DOES NOT MEET ACCEPT STND	92B	Underwater Inspection	N Months
36D	Rail End Treat. App. Rating	DOES NOT MEET ACCEPT STND	93B	Underwater Insp. Date	
67	Struc Eval App. Rating	6	92C	Special Inspection	N Months
68	Deck Geometry App. Rating	5	93C	Special Inspection Date	
69	Underclearance App. Rating	N	BORDER BRIDGE INFORMATION		
71	Waterway Adeq. App. Rating	7	98	Neighboring State Code	
72	Approach Road App. Rating	8	98B	Neighboring State % Respon	
113	Scour Assess App. Rating	8	99	Neighboring State Struc. No.	
APPROVED POSTING INFORMATION			FIELD POSTING INFORMATION		
Approved Posting Category S-1			Field Posting Category S-1		
Ton1 Ton2 Ton3			Ton1 Ton2 Ton3		
Tonnage Values for Posting Sign			Tonnage Values for Posting Sign		
General Text for Posting Sign			General Text for Posting Sign		
NO POSTING REQUIRED			NO POSTING REQUIRED		

Design_No = P0984



Missouri Department of Transportation
Bridge Inventory and Inspection System
Structural Inventory & Appraisal Sheet

December 2, 2024
1:57:59pm

COUNTY : POLK BRIDGE : P0984 REVIEW STATUS : APPROVED NBI STATUS : P
RECORD TYPE : ROUTE CARRIED 'ON' STRUCT RUN DATE : 2/7/2018 SUBMITTAL YEAR : 2017

GENERAL STRUCTURE INFORMATION			ROUTE DESIGNATION INFORMATION		
1	State	MISSOURI	5A	Record Type	ROUTE CARRIED 'ON' STRUCT
2	District	SW	5B	Route Signing Prefix	MO
3	County	POLK	5C	Designated Level of Service	MAINLINE
8	Federal ID No.	8020	5D	Route Number	00000
27	Year Built	1956	5E	Directional Suffix	NOT APPLICABLE
106	Year Reconstructed	0	7	Facility Carried	RT O S
42A	Type of Service On	HIGHWAY	12	Base Hwy. Network	NO
21	Structure Maintenance	STATE HIGHWAY AGENCY	13A	LRS Inventory Route No.	
22	Structure Owner	STATE HIGHWAY AGENCY	13B	Subroute No.	
33	Br. Median Code	NO MEDIAN	20	Toll Status	ON FREE ROAD
37	Historical Significance	NOT ELIGIBLE FOR NR OF HP	26	Functional Classification	08-RURAL MINOR COLLECTOR
101	Parallel Struc Desg	NONE EXISTS	28A	Lanes on Structure	02
103	Temporary Structure	NOT TEMPORARY	100	STRAHNET Designation	RTE NOT A DEFENSE HWY
112	NBIS Bridge Length	YES	104	National Highway System	NOT ON NHS
			105	Federal Lands Highway	NOT APPLICABLE
			110	Designated Nat. Network	NO
STRUCTURE LOCATION INFORMATION			STRUCTURE TRAFFIC INFORMATION		
4	Place	FLEMINGTON	29	AADT	179
	Code	24598	30	AADT Year	2016
9	Location	S 32 T 35 N R 23 W	102	Direction of Traffic	2-WAY TRAFFIC
11	Milepoint	11.46 miles	109	AADT Truck Percent	10%
16	Latitude	37 D 44 M 27 S	114	Future AADT	286
17	Longitude	93 D 29 M 9 S	115	Future AADT Year	2036
UNDERRECORD INFORMATION			STRUCTURE GEOMETRIC INFORMATION		
6	Features Intersected	ASHLOCK CR	10	Inventory Rte. Vert. Clear	99 Ft. 99 In.
42B	Type of Service Under	WATERWAY	19	By pass Detour Length	24.80 miles
28B	Lanes Under Structure	00	32	Approach Roadway Width	22 Ft. 12 In.
54A	Vert. Clearance Ref.	N/A	34	Skew	60.00 Degrees
54B	Vert. Clearance	0 Ft. 0 In.	35	Struct. Flared	NO
55A	Rt. Lat Clear Ref.	N/A	47	Total Horiz. Clear	23 Ft. 11 In.
55B	Rt. Lat Clearance	0 Ft. 0 In.	48	Maximum Span Length	12 Ft. 2 In.
56	Left Lat Clearance	0 Ft. 0 In.	49	Structure Length	74 Ft. 6 In.
38	Navigation Control	PERMIT NOT REQ	50A	Left Curb/Sidewalk Width	0 Ft. 0 In.
39	Nav Vertical Clear	0 Ft. 0 In.	50B	Right Curb/Sidewalk Width	0 Ft. 0 In.
40	Nav Horizontal Clear	0 Ft. 0 In.	51	Curb to Curb Br. Width	23 Ft. 11 In.
111	Nav. Pier Protection		52	Deck Width (Out-Out)	25 Ft. 11 In.
116	Nav. Cl. Vert. Clear		53	Vert. Clearance Over Deck	99 Ft. 99 In.

Design_No = P0984



Missouri Department of Transportation
Bridge Inventory and Inspection System
Structural Inventory & Appraisal Sheet

December 2, 2024
1:57:59pm

COUNTY : POLK BRIDGE : P0984 REVIEW STATUS : APPROVED NBI STATUS : P
RECORD TYPE : ROUTE CARRIED 'ON' STRUCT RUN DATE : 2/7/2018 SUBMITTAL YEAR : 2017

LOAD RATING AND POSTING INFORMATION			MATERIAL/CONSTRUCTION INFORMATION		
31	Design Load	H 10	43A	Main Struc. Mat type	CONCRETE CONTINUOUS
41	Structure Status	A - OPEN NO RESTRICTIONS	43B	Main struc Constr. Type	CULVERT
63	Oper. Rating Meth.	LOAD FACTOR	45	# of Main Spans	3
64	Operating Rating	45 Tons.	44A	Appr Struc. Mat type	
65	Inventory Rating Meth	LOAD FACTOR	44B	Appr Struc. Cnstr. type	
66	Inventory Rating	27 Tons.	46	# of Approach Span	0
70	Bridge Posting Code	=>LEGAL LOADS	107	Deck Mat/Constr.	NA
PROPOSED IMPROVEMENT INFORMATION			108A	Wear Surf Mat/Constr.	NA
Sufficiency Rating 72.5 Percent			108B	Membrane Mat/Constr.	NA
Deficiency Rating NOT DEFICIENT			108C	Deck Protect Mat/Constr.	NA
Funding Eligibility			CONDITION RATING INFORMATION		
75A	Proposed Work		58	Deck Cond. Rating	N
75B	Work Done By		59	Superstructure Cond. Rating	N
76	New Struc Length	0 Ft. 0 In.	60	Substructure Cond. Rating	N
94	Struc Improve Cost	\$ 0,000	61	Channel /Channel Protection Cond. Rating	5
95	Roadway Improve Cost	\$ 0,000	62	Culvert Cond. Rating	5
96	Total Project Cost	\$ 0,000	INSPECTION INFORMATION		
97	Year of Cost Estimates	0	90	Gen. Insp Date	11 / 17
APPRAISAL RATING INFORMATION			91	Gen. Insp. Frequency	24 Months
36A	Br. Rail App. Rating	DOES NOT MEET ACCEPT STND	92A	Frac. Critical Inspection	N Months
36B	Transition Rail App. Rating	DOES NOT MEET ACCEPT STND	93A	Frac. Critical Insp. Date	
36C	Approach Rail App. Rating	DOES NOT MEET ACCEPT STND	92B	Underwater Inspection	N Months
36D	Rail End Treat. App. Rating	DOES NOT MEET ACCEPT STND	93B	Underwater Insp. Date	
67	Struc Eval App. Rating	5	92C	Special Inspection	N Months
68	Deck Geometry App. Rating	5	93C	Special Inspection Date	
69	Underclearance App. Rating	N	BORDER BRIDGE INFORMATION		
71	Waterway Adeq. App. Rating	7	98	Neighboring State Code	
72	Approach Road App. Rating	8	98B	Neighboring State % Respon	
113	Scour Assess App. Rating	5	99	Neighboring State Struc. No.	
APPROVED POSTING INFORMATION			FIELD POSTING INFORMATION		
Approved Posting Category S-1			Field Posting Category S-1		
Ton1 Ton2 Ton3			Ton1 Ton2 Ton3		
Tonnage Values for Posting Sign			Tonnage Values for Posting Sign		
General Text for Posting Sign			General Text for Posting Sign		
NO POSTING REQUIRED			NO POSTING REQUIRED		

Design_No = P0984



Missouri Department of Transportation
Bridge Inventory and Inspection System
Structural Inventory & Appraisal Sheet

December 2, 2024
1:57:59pm

COUNTY : POLK BRIDGE : P0984 REVIEW STATUS : APPROVED NBI STATUS : T
RECORD TYPE : ROUTE CARRIED 'ON' STRUCT RUN DATE : 3/21/2024 SUBMITTAL YEAR : 2024

GENERAL STRUCTURE INFORMATION			ROUTE DESIGNATION INFORMATION		
1	State	MISSOURI	5A	Record Type	ROUTE CARRIED 'ON' STRUCT
2	District	SW	5B	Route Signing Prefix	MO
3	County	POLK	5C	Designated Level of Service	MAINLINE
8	Federal ID No.	8020	5D	Route Number	00000
27	Year Built	1956	5E	Directional Suffix	NOT APPLICABLE
106	Year Reconstructed	0	7	Facility Carried	RT O S
42A	Type of Service On	HIGHWAY	12	Base Hwy. Network	NO
21	Structure Maintenance	STATE HIGHWAY AGENCY	13A	LRS Inventory Route No.	
22	Structure Owner	STATE HIGHWAY AGENCY	13B	Subroute No.	
33	Br. Median Code	NO MEDIAN	20	Toll Status	ON FREE ROAD
37	Historical Significance	NOT ELIGIBLE FOR NR OF HP	26	Functional Classification	08-RURAL MINOR COLLECTOR
101	Parallel Struc Desg	NONE EXISTS	28A	Lanes on Structure	02
103	Temporary Structure	NOT TEMPORARY	100	STRAHNET Designation	RTE NOT A DEFENSE HWY
112	NBIS Bridge Length	YES	104	National Highway System	NOT ON NHS
			105	Federal Lands Highway	NOT APPLICABLE
			110	Designated Nat. Network	NO
STRUCTURE LOCATION INFORMATION			STRUCTURE TRAFFIC INFORMATION		
4	Place	FLEMINGTON	29	AADT	537
	Code	24598	30	AADT Year	2023
9	Location	S 32 T 35 N R 23 W	102	Direction of Traffic	2-WAY TRAFFIC
11	Milepoint	11.55 miles	109	AADT Truck Percent	10%
16	Latitude	37 D 44 M 27 S	114	Future AADT	859
17	Longitude	93 D 29 M 9 S	115	Future AADT Year	2043
UNDERRECORD INFORMATION			STRUCTURE GEOMETRIC INFORMATION		
6	Features Intersected	ASHLOCK CR	10	Inventory Rte. Vert. Clear	99 Ft. 99 In.
42B	Type of Service Under	WATERWAY	19	By pass Detour Length	25.00 miles
28B	Lanes Under Structure	00	32	Approach Roadway Width	22 Ft. 12 In.
54A	Vert. Clearance Ref.	N/A	34	Skew	60.00 Degrees
54B	Vert. Clearance	0 Ft. 0 In.	35	Struct. Flared	NO
55A	Rt. Lat Clear Ref.	N/A	47	Total Horiz. Clear	23 Ft. 11 In.
55B	Rt. Lat Clearance	0 Ft. 0 In.	48	Maximum Span Length	12 Ft. 2 In.
56	Left Lat Clearance	0 Ft. 0 In.	49	Structure Length	74 Ft. 6 In.
38	Navigation Control	PERMIT NOT REQ	50A	Left Curb/Sidewalk Width	0 Ft. 0 In.
39	Nav Vertical Clear	0 Ft. 0 In.	50B	Right Curb/Sidewalk Width	0 Ft. 0 In.
40	Nav Horizontal Clear	0 Ft. 0 In.	51	Curb to Curb Br. Width	23 Ft. 11 In.
111	Nav. Pier Protection		52	Deck Width (Out-Out)	25 Ft. 11 In.
116	Nav. Cl. Vert. Clear		53	Vert. Clearance Over Deck	99 Ft. 99 In.

Design_No = P0984



Missouri Department of Transportation
Bridge Inventory and Inspection System
Structural Inventory & Appraisal Sheet

December 2, 2024
1:57:59pm

COUNTY : POLK	BRIDGE : P0984	REVIEW STATUS : APPROVED	NBI STATUS : T
RECORD TYPE :	ROUTE CARRIED 'ON' STRUCT	RUN DATE : 3/21/2024	SUBMITTAL YEAR : 2024

LOAD RATING AND POSTING INFORMATION		MATERIAL/CONSTRUCTION INFORMATION	
31	Design Load H 10	43A	Main Struc. Mat type CONCRETE CONTINUOUS
41	Structure Status OPEN NO RESTRICTIONS	43B	Main struc Constr. Type CULVERT
63	Oper. Rating Meth. LOAD FACTOR	45	# of Main Spans 3
64	Operating Rating 45 Tons.	44A	Appr Struc. Mat type 000
65	Inventory Rating Meth LOAD FACTOR	44B	Appr Struc. Cnstr. type 000
66	Inventory Rating 27 Tons.	46	# of Approach Span 0
70	Bridge Posting Code =>LEGAL LOADS	107	Deck Mat/Constr. NA
PROPOSED IMPROVEMENT INFORMATION		108A	Wear Surf Mat/Constr. NA
Sufficiency Rating 65.9 Percent		108B	Membrane Mat/Constr. NA
Deficiency Rating NOT DEFICIENT		108C	Deck Protect Mat/Constr. NA
Funding Eligibility		CONDITION RATING INFORMATION	
75A	Proposed Work	58	Deck Cond. Rating N
75B	Work Done By	59	Superstructure Cond. Rating N
76	New Struc Length 0 Ft. 0 In.	60	Substructure Cond. Rating N
94	Struc Improve Cost \$ 0,000	61	Channel /Channel Protection Cond. Rating 4
95	Roadway Improve Cost \$ 0,000	62	Culvert Cond. Rating 5
96	Total Project Cost \$ 0,000	INSPECTION INFORMATION	
97	Year of Cost Estimates 0	90	Gen. Insp Date 11 / 23
APPRAISAL RATING INFORMATION		91	Gen. Insp. Frequency 24 Months
36A	Br. Rail App. Rating DOES NOT MEET ACCEPT STND	92A	Frac. Critical Inspection N Months
36B	Transition Rail App. Rating DOES NOT MEET ACCEPT STND	93A	Frac. Critical Insp. Date
36C	Approach Rail App. Rating DOES NOT MEET ACCEPT STND	92B	Underwater Inspection N Months
36D	Rail End Treat. App. Rating DOES NOT MEET ACCEPT STND	93B	Underwater Insp. Date
67	Struc Eval App. Rating 5	92C	Special Inspection N Months
68	Deck Geometry App. Rating 4	93C	Special Inspection Date
69	Underclearance App. Rating N	BORDER BRIDGE INFORMATION	
71	Waterway Adeq. App. Rating 7	98	Neighboring State Code
72	Approach Road App. Rating 8	98B	Neighboring State % Respon
113	Scour Assess App. Rating 5	99	Neighboring State Struc. No.
APPROVED POSTING INFORMATION		FIELD POSTING INFORMATION	
Approved Posting Category S-1		Field Posting Category S-1	
Ton1 Ton2 Ton3		Ton1 Ton2 Ton3	
Tonnage Values for Posting Sign		Tonnage Values for Posting Sign	
General Text for Posting Sign		General Text for Posting Sign	
NO POSTING REQUIRED		NO POSTING REQUIRED	

Design_No = P0984



Missouri Department of Transportation
Bridge Inventory and Inspection System
Structural Inventory & Appraisal Sheet

December 2, 2024
1:57:59pm

COUNTY : POLK BRIDGE : P0984 REVIEW STATUS : APPROVED NBI STATUS : P
RECORD TYPE : ROUTE CARRIED 'ON' STRUCT RUN DATE : 2/18/2009 SUBMITTAL YEAR : 2008

GENERAL STRUCTURE INFORMATION

1	State	MISSOURI
2	District	SW
3	County	POLK
8	Federal ID No.	8020
27	Year Built	1956
106	Year Reconstructed	0
42A	Type of Service On	HIGHWAY
21	Structure Maintenance	STATE HIGHWAY AGENCY
22	Structure Owner	STATE HIGHWAY AGENCY
33	Br. Median Code	NO MEDIAN
37	Historical Significance	NOT ELIGIBLE FOR NR OF HP
101	Parallel Struc Desg	NONE EXISTS
103	Temporary Structure	NOT TEMPORARY
112	NBIS Bridge Length	YES

ROUTE DESIGNATION INFORMATION

5A	Record Type	ROUTE CARRIED 'ON' STRUCT
5B	Route Signing Prefix	MO
5C	Designated Level of Service	MAINLINE
5D	Route Number	00000
5E	Directional Suffix	NOT APPLICABLE
7	Facility Carried	RT O S
12	Base Hwy. Network	NO
13A	LRS Inventory Route No.	
13B	Subroute No.	
20	Toll Status	ON FREE ROAD
26	Functional Classification	08-RURAL MINOR COLLECTOR
28A	Lanes on Structure	02
100	STRAHNET Designation	RTE NOT A DEFENSE HWY
104	National Highway System	NOT ON NHS
105	Federal Lands Highway	NOT APPLICABLE
110	Designated Nat. Network	NO

STRUCTURE LOCATION INFORMATION

4	Place	FLEMINGTON
	Code	24598
9	Location	S 32 T 35 N R 23 W
11	Milepoint	11.46 miles
16	Latitude	37 D 44 M 24 S
17	Longitude	93 D 29 M 6 S

STRUCTURE TRAFFIC INFORMATION

29	AADT	452
30	AADT Year	2008
102	Direction of Traffic	2-WAY TRAFFIC
109	AADT Truck Percent	10%
114	Future AADT	723
115	Future AADT Year	2029

UNDERRECORD INFORMATION

6	Features Intersected	ASHLOCK CR
42B	Type of Service Under	WATERWAY
28B	Lanes Under Structure	00
54A	Vert. Clearance Ref.	N/A
54B	Vert. Clearance	0 Ft. 0 In.
55A	Rt. Lat Clear Ref.	N/A
55B	Rt. Lat Clearance	0 Ft. 0 In.
56	Left Lat Clearance	0 Ft. 0 In.
38	Navigation Control	PERMIT NOT REQ
39	Nav Vertical Clear	0 Ft. 0 In.
40	Nav Horizontal Clear	0 Ft. 0 In.
111	Nav. Pier Protection	
116	Nav. Cl. Vert. Clear	

STRUCTURE GEOMETRIC INFORMATION

10	Inventory Rte. Vert. Clear	99 Ft. 99 In.
19	By pass Detour Length	24.80 miles
32	Approach Roadway Width	22 Ft. 12 In.
34	Skew	60.00 Degrees
35	Struct. Flared	NO
47	Total Horiz. Clear	23 Ft. 11 In.
48	Maximum Span Length	12 Ft. 2 In.
49	Structure Length	74 Ft. 6 In.
50A	Left Curb/Sidewalk Width	0 Ft. 0 In.
50B	Right Curb/Sidewalk Width	0 Ft. 0 In.
51	Curb to Curb Br. Width	23 Ft. 11 In.
52	Deck Width (Out-Out)	25 Ft. 11 In.
53	Vert. Clearance Over Deck	99 Ft. 99 In.

Design_No = P0984



Missouri Department of Transportation
Bridge Inventory and Inspection System
Structural Inventory & Appraisal Sheet

December 2, 2024
1:57:59pm

COUNTY : POLK BRIDGE : P0984 REVIEW STATUS : APPROVED NBI STATUS : P
RECORD TYPE : ROUTE CARRIED 'ON' STRUCT RUN DATE : 2/18/2009 SUBMITTAL YEAR : 2008

LOAD RATING AND POSTING INFORMATION			MATERIAL/CONSTRUCTION INFORMATION		
31	Design Load	H 10	43A	Main Struc. Mat type	CONCRETE CONTINUOUS
41	Structure Status	A - OPEN NO RESTRICTIONS	43B	Main struc Constr. Type	CULVERT
63	Oper. Rating Meth.	NO RATING ANALYSIS PERFMD	45	# of Main Spans	3
64	Operating Rating	55 Tons.	44A	Appr Struc. Mat type	
65	Inventory Rating Meth	NO RATING ANALYSIS PERFMD	44B	Appr Struc. Cnstr. type	
66	Inventory Rating	17 Tons.	46	# of Approach Span	0
70	Bridge Posting Code	=>LEGAL LOADS	107	Deck Mat/Constr.	NA
PROPOSED IMPROVEMENT INFORMATION			108A	Wear Surf Mat/Constr.	NA
Sufficiency Rating 62.5 Percent			108B	Membrane Mat/Constr.	NA
Deficiency Rating NOT DEFICIENT			108C	Deck Protect Mat/Constr.	NA
Funding Eligibility			CONDITION RATING INFORMATION		
75A	Proposed Work		58	Deck Cond. Rating	N
75B	Work Done By		59	Superstructure Cond. Rating	N
76	New Struc Length	0 Ft. 0 In.	60	Substructure Cond. Rating	N
94	Struc Improve Cost	\$ 0,000	61	Channel /Channel Protection Cond. Rating	6
95	Roadway Improve Cost	\$ 0,000	62	Culvert Cond. Rating	6
96	Total Project Cost	\$ 0,000	INSPECTION INFORMATION		
97	Year of Cost Estimates	0	90	Gen. Insp Date	11 / 07
APPRAISAL RATING INFORMATION			91	Gen. Insp. Frequency	24 Months
36A	Br. Rail App. Rating	MEETS ACCEPTBLE STND	92A	Frac. Critical Inspection	N Months
36B	Transition Rail App. Rating	MEETS ACCEPTBLE STND	93A	Frac. Critical Insp. Date	
36C	Approach Rail App. Rating	MEETS ACCEPTBLE STND	92B	Underwater Inspection	N Months
36D	Rail End Treat. App. Rating	MEETS ACCEPTBLE STND	93B	Underwater Insp. Date	
67	Struc Eval App. Rating	4	92C	Special Inspection	N Months
68	Deck Geometry App. Rating	4	93C	Special Inspection Date	
69	Underclearance App. Rating	N	BORDER BRIDGE INFORMATION		
71	Waterway Adeq. App. Rating	7	98	Neighboring State Code	
72	Approach Road App. Rating	8	98B	Neighboring State % Respon	
113	Scour Assess App. Rating	8	99	Neighboring State Struc. No.	
APPROVED POSTING INFORMATION			FIELD POSTING INFORMATION		
Approved Posting Category S-1			Field Posting Category S-1		
Ton1 Ton2 Ton3			Ton1 Ton2 Ton3		
Tonnage Values for Posting Sign			Tonnage Values for Posting Sign		
General Text for Posting Sign			General Text for Posting Sign		
NO POSTING REQUIRED			NO POSTING REQUIRED		

Design_No = P0984



Missouri Department of Transportation
Bridge Inventory and Inspection System
Structural Inventory & Appraisal Sheet

December 2, 2024
1:57:59pm

COUNTY : POLK BRIDGE : P0984 REVIEW STATUS : APPROVED NBI STATUS : P
RECORD TYPE : ROUTE CARRIED 'ON' STRUCT RUN DATE : 1/16/2014 SUBMITTAL YEAR : 2013

GENERAL STRUCTURE INFORMATION			ROUTE DESIGNATION INFORMATION		
1	State	MISSOURI	5A	Record Type	ROUTE CARRIED 'ON' STRUCT
2	District	SW	5B	Route Signing Prefix	MO
3	County	POLK	5C	Designated Level of Service	MAINLINE
8	Federal ID No.	8020	5D	Route Number	00000
27	Year Built	1956	5E	Directional Suffix	NOT APPLICABLE
106	Year Reconstructed	0	7	Facility Carried	RT O S
42A	Type of Service On	HIGHWAY	12	Base Hwy. Network	NO
21	Structure Maintenance	STATE HIGHWAY AGENCY	13A	LRS Inventory Route No.	
22	Structure Owner	STATE HIGHWAY AGENCY	13B	Subroute No.	
33	Br. Median Code	NO MEDIAN	20	Toll Status	ON FREE ROAD
37	Historical Significance	NOT ELIGIBLE FOR NR OF HP	26	Functional Classification	08-RURAL MINOR COLLECTOR
101	Parallel Struc Desg	NONE EXISTS	28A	Lanes on Structure	02
103	Temporary Structure	NOT TEMPORARY	100	STRAHNET Designation	RTE NOT A DEFENSE HWY
112	NBIS Bridge Length	YES	104	National Highway System	NOT ON NHS
			105	Federal Lands Highway	NOT APPLICABLE
			110	Designated Nat. Network	NO
STRUCTURE LOCATION INFORMATION			STRUCTURE TRAFFIC INFORMATION		
4	Place	FLEMINGTON	29	AADT	412
	Code	24598	30	AADT Year	2013
9	Location	S 32 T 35 N R 23 W	102	Direction of Traffic	2-WAY TRAFFIC
11	Milepoint	11.46 miles	109	AADT Truck Percent	11%
16	Latitude	37 D 44 M 27 S	114	Future AADT	659
17	Longitude	93 D 29 M 9 S	115	Future AADT Year	2034
UNDERRECORD INFORMATION			STRUCTURE GEOMETRIC INFORMATION		
6	Features Intersected	ASHLOCK CR	10	Inventory Rte. Vert. Clear	99 Ft. 99 In.
42B	Type of Service Under	WATERWAY	19	By pass Detour Length	24.80 miles
28B	Lanes Under Structure	00	32	Approach Roadway Width	22 Ft. 12 In.
54A	Vert. Clearance Ref.	N/A	34	Skew	60.00 Degrees
54B	Vert. Clearance	0 Ft. 0 In.	35	Struct. Flared	NO
55A	Rt. Lat Clear Ref.	N/A	47	Total Horiz. Clear	23 Ft. 11 In.
55B	Rt. Lat Clearance	0 Ft. 0 In.	48	Maximum Span Length	12 Ft. 2 In.
56	Left Lat Clearance	0 Ft. 0 In.	49	Structure Length	74 Ft. 6 In.
38	Navigation Control	PERMIT NOT REQ	50A	Left Curb/Sidewalk Width	0 Ft. 0 In.
39	Nav Vertical Clear	0 Ft. 0 In.	50B	Right Curb/Sidewalk Width	0 Ft. 0 In.
40	Nav Horizontal Clear	0 Ft. 0 In.	51	Curb to Curb Br. Width	23 Ft. 11 In.
111	Nav. Pier Protection		52	Deck Width (Out-Out)	25 Ft. 11 In.
116	Nav. Cl. Vert. Clear		53	Vert. Clearance Over Deck	99 Ft. 99 In.

Design_No = P0984



Missouri Department of Transportation
Bridge Inventory and Inspection System
Structural Inventory & Appraisal Sheet

December 2, 2024
1:57:59pm

COUNTY : POLK BRIDGE : P0984 REVIEW STATUS : APPROVED NBI STATUS : P
RECORD TYPE : ROUTE CARRIED 'ON' STRUCT RUN DATE : 1/16/2014 SUBMITTAL YEAR : 2013

LOAD RATING AND POSTING INFORMATION			MATERIAL/CONSTRUCTION INFORMATION		
31	Design Load	H 10	43A	Main Struc. Mat type	CONCRETE CONTINUOUS
41	Structure Status	A - OPEN NO RESTRICTIONS	43B	Main struc Constr. Type	CULVERT
63	Oper. Rating Meth.	NO RATING ANALYSIS PERFMD	45	# of Main Spans	3
64	Operating Rating	55 Tons.	44A	Appr Struc. Mat type	
65	Inventory Rating Meth	NO RATING ANALYSIS PERFMD	44B	Appr Struc. Cnstr. type	
66	Inventory Rating	17 Tons.	46	# of Approach Span	0
70	Bridge Posting Code	=>LEGAL LOADS	107	Deck Mat/Constr.	NA
PROPOSED IMPROVEMENT INFORMATION			108A	Wear Surf Mat/Constr.	NA
Sufficiency Rating 62.6 Percent			108B	Membrane Mat/Constr.	NA
Deficiency Rating NOT DEFICIENT			108C	Deck Protect Mat/Constr.	NA
Funding Eligibility			CONDITION RATING INFORMATION		
75A	Proposed Work		58	Deck Cond. Rating	N
75B	Work Done By		59	Superstructure Cond. Rating	N
76	New Struc Length	0 Ft. 0 In.	60	Substructure Cond. Rating	N
94	Struc Improve Cost	\$ 0,000	61	Channel /Channel Protection Cond. Rating	6
95	Roadway Improve Cost	\$ 0,000	62	Culvert Cond. Rating	6
96	Total Project Cost	\$ 0,000	INSPECTION INFORMATION		
97	Year of Cost Estimates	0	90	Gen. Insp Date	12 / 13
APPRAISAL RATING INFORMATION			91	Gen. Insp. Frequency	24 Months
36A	Br. Rail App. Rating	NOT APPLICABLE	92A	Frac. Critical Inspection	N Months
36B	Transition Rail App. Rating	NOT APPLICABLE	93A	Frac. Critical Insp. Date	
36C	Approach Rail App. Rating	NOT APPLICABLE	92B	Underwater Inspection	N Months
36D	Rail End Treat. App. Rating	NOT APPLICABLE	93B	Underwater Insp. Date	
67	Struc Eval App. Rating	4	92C	Special Inspection	N Months
68	Deck Geometry App. Rating	4	93C	Special Inspection Date	
69	Underclearance App. Rating	N	BORDER BRIDGE INFORMATION		
71	Waterway Adeq. App. Rating	7	98	Neighboring State Code	
72	Approach Road App. Rating	8	98B	Neighboring State % Respon	
113	Scour Assess App. Rating	8	99	Neighboring State Struc. No.	
APPROVED POSTING INFORMATION			FIELD POSTING INFORMATION		
Approved Posting Category S-1			Field Posting Category S-1		
Ton1 Ton2 Ton3			Ton1 Ton2 Ton3		
Tonnage Values for Posting Sign			Tonnage Values for Posting Sign		
General Text for Posting Sign			General Text for Posting Sign		
NO POSTING REQUIRED			NO POSTING REQUIRED		

Design_No = P0984



Missouri Department of Transportation
Bridge Inventory and Inspection System
Structural Inventory & Appraisal Sheet

December 2, 2024
1:57:59pm

COUNTY : POLK BRIDGE : P0984 REVIEW STATUS : APPROVED NBI STATUS : P
RECORD TYPE : ROUTE CARRIED 'ON' STRUCT RUN DATE : 2/11/2020 SUBMITTAL YEAR : 2019

GENERAL STRUCTURE INFORMATION			ROUTE DESIGNATION INFORMATION		
1	State	MISSOURI	5A	Record Type	ROUTE CARRIED 'ON' STRUCT
2	District	SW	5B	Route Signing Prefix	MO
3	County	POLK	5C	Designated Level of Service	MAINLINE
8	Federal ID No.	8020	5D	Route Number	00000
27	Year Built	1956	5E	Directional Suffix	NOT APPLICABLE
106	Year Reconstructed	0	7	Facility Carried	RT O S
42A	Type of Service On	HIGHWAY	12	Base Hwy. Network	NO
21	Structure Maintenance	STATE HIGHWAY AGENCY	13A	LRS Inventory Route No.	
22	Structure Owner	STATE HIGHWAY AGENCY	13B	Subroute No.	
33	Br. Median Code	NO MEDIAN	20	Toll Status	ON FREE ROAD
37	Historical Significance	NOT ELIGIBLE FOR NR OF HP	26	Functional Classification	08-RURAL MINOR COLLECTOR
101	Parallel Struc Desg	NONE EXISTS	28A	Lanes on Structure	02
103	Temporary Structure	NOT TEMPORARY	100	STRAHNET Designation	RTE NOT A DEFENSE HWY
112	NBIS Bridge Length	YES	104	National Highway System	NOT ON NHS
			105	Federal Lands Highway	NOT APPLICABLE
			110	Designated Nat. Network	NO
STRUCTURE LOCATION INFORMATION			STRUCTURE TRAFFIC INFORMATION		
4	Place	FLEMINGTON	29	AADT	185
	Code	24598	30	AADT Year	2018
9	Location	S 32 T 35 N R 23 W	102	Direction of Traffic	2-WAY TRAFFIC
11	Milepoint	11.46 miles	109	AADT Truck Percent	9%
16	Latitude	37 D 44 M 27 S	114	Future AADT	296
17	Longitude	93 D 29 M 9 S	115	Future AADT Year	2038
UNDERRECORD INFORMATION			STRUCTURE GEOMETRIC INFORMATION		
6	Features Intersected	ASHLOCK CR	10	Inventory Rte. Vert. Clear	99 Ft. 99 In.
42B	Type of Service Under	WATERWAY	19	By pass Detour Length	24.80 miles
28B	Lanes Under Structure	00	32	Approach Roadway Width	22 Ft. 12 In.
54A	Vert. Clearance Ref.	N/A	34	Skew	60.00 Degrees
54B	Vert. Clearance	0 Ft. 0 In.	35	Struct. Flared	NO
55A	Rt. Lat Clear Ref.	N/A	47	Total Horiz. Clear	23 Ft. 11 In.
55B	Rt. Lat Clearance	0 Ft. 0 In.	48	Maximum Span Length	12 Ft. 2 In.
56	Left Lat Clearance	0 Ft. 0 In.	49	Structure Length	74 Ft. 6 In.
38	Navigation Control	PERMIT NOT REQ	50A	Left Curb/Sidewalk Width	0 Ft. 0 In.
39	Nav Vertical Clear	0 Ft. 0 In.	50B	Right Curb/Sidewalk Width	0 Ft. 0 In.
40	Nav Horizontal Clear	0 Ft. 0 In.	51	Curb to Curb Br. Width	23 Ft. 11 In.
111	Nav. Pier Protection		52	Deck Width (Out-Out)	25 Ft. 11 In.
116	Nav. Cl. Vert. Clear		53	Vert. Clearance Over Deck	99 Ft. 99 In.

Design_No = P0984



Missouri Department of Transportation
Bridge Inventory and Inspection System
Structural Inventory & Appraisal Sheet

December 2, 2024
1:57:59pm

COUNTY : POLK BRIDGE : P0984 REVIEW STATUS : APPROVED NBI STATUS : P
RECORD TYPE : ROUTE CARRIED 'ON' STRUCT RUN DATE : 2/11/2020 SUBMITTAL YEAR : 2019

LOAD RATING AND POSTING INFORMATION			MATERIAL/CONSTRUCTION INFORMATION		
31	Design Load	H 10	43A	Main Struc. Mat type	CONCRETE CONTINUOUS
41	Structure Status	A - OPEN NO RESTRICTIONS	43B	Main struc Constr. Type	CULVERT
63	Oper. Rating Meth.	LOAD FACTOR	45	# of Main Spans	3
64	Operating Rating	45 Tons.	44A	Appr Struc. Mat type	
65	Inventory Rating Meth	LOAD FACTOR	44B	Appr Struc. Cnstr. type	
66	Inventory Rating	27 Tons.	46	# of Approach Span	0
70	Bridge Posting Code	=>LEGAL LOADS	107	Deck Mat/Constr.	NA
PROPOSED IMPROVEMENT INFORMATION			108A	Wear Surf Mat/Constr.	NA
Sufficiency Rating 72.5 Percent			108B	Membrane Mat/Constr.	NA
Deficiency Rating NOT DEFICIENT			108C	Deck Protect Mat/Constr.	NA
Funding Eligibility			CONDITION RATING INFORMATION		
75A	Proposed Work		58	Deck Cond. Rating	N
75B	Work Done By		59	Superstructure Cond. Rating	N
76	New Struc Length	0 Ft. 0 In.	60	Substructure Cond. Rating	N
94	Struc Improve Cost	\$ 0,000	61	Channel /Channel Protection Cond. Rating	4
95	Roadway Improve Cost	\$ 0,000	62	Culvert Cond. Rating	5
96	Total Project Cost	\$ 0,000	INSPECTION INFORMATION		
97	Year of Cost Estimates	0	90	Gen. Insp Date	11 / 19
APPRAISAL RATING INFORMATION			91	Gen. Insp. Frequency	24 Months
36A	Br. Rail App. Rating	DOES NOT MEET ACCEPT STND	92A	Frac. Critical Inspection	N Months
36B	Transition Rail App. Rating	DOES NOT MEET ACCEPT STND	93A	Frac. Critical Insp. Date	
36C	Approach Rail App. Rating	DOES NOT MEET ACCEPT STND	92B	Underwater Inspection	N Months
36D	Rail End Treat. App. Rating	DOES NOT MEET ACCEPT STND	93B	Underwater Insp. Date	
67	Struc Eval App. Rating	5	92C	Special Inspection	N Months
68	Deck Geometry App. Rating	5	93C	Special Inspection Date	
69	Underclearance App. Rating	N	BORDER BRIDGE INFORMATION		
71	Waterway Adeq. App. Rating	7	98	Neighboring State Code	
72	Approach Road App. Rating	8	98B	Neighboring State % Respon	
113	Scour Assess App. Rating	5	99	Neighboring State Struc. No.	
APPROVED POSTING INFORMATION			FIELD POSTING INFORMATION		
Approved Posting Category S-1			Field Posting Category S-1		
Ton1 Ton2 Ton3			Ton1 Ton2 Ton3		
Tonnage Values for Posting Sign			Tonnage Values for Posting Sign		
General Text for Posting Sign			General Text for Posting Sign		
NO POSTING REQUIRED			NO POSTING REQUIRED		

Design_No = P0984



Missouri Department of Transportation
Bridge Inventory and Inspection System
Structural Inventory & Appraisal Sheet

December 2, 2024
1:57:59pm

COUNTY : POLK BRIDGE : P0984 REVIEW STATUS : APPROVED NBI STATUS : P
RECORD TYPE : ROUTE CARRIED 'ON' STRUCT RUN DATE : 4/2/2003 SUBMITTAL YEAR : 2002

GENERAL STRUCTURE INFORMATION			ROUTE DESIGNATION INFORMATION		
1	State	MISSOURI	5A	Record Type	ROUTE CARRIED 'ON' STRUCT
2	District	SW	5B	Route Signing Prefix	MO
3	County	POLK	5C	Designated Level of Service	MAINLINE
8	Federal ID No.	8020	5D	Route Number	00000
27	Year Built	1956	5E	Directional Suffix	NOT APPLICABLE
106	Year Reconstructed	0	7	Facility Carried	RT O S
42A	Type of Service On	HIGHWAY	12	Base Hwy. Network	NO
21	Structure Maintenance	STATE HIGHWAY AGENCY	13A	LRS Inventory Route No.	
22	Structure Owner	STATE HIGHWAY AGENCY	13B	Subroute No.	
33	Br. Median Code	NO MEDIAN	20	Toll Status	ON FREE ROAD
37	Historical Significance	NOT ELIGIBLE FOR NR OF HP	26	Functional Classification	08-RURAL MINOR COLLECTOR
101	Parallel Struc Desg	NONE EXISTS	28A	Lanes on Structure	02
103	Temporary Structure	NOT TEMPORARY	100	STRAHNET Designation	RTE NOT A DEFENSE HWY
112	NBIS Bridge Length	YES	104	National Highway System	NOT ON NHS
			105	Federal Lands Highway	NOT APPLICABLE
			110	Designated Nat. Network	NO
STRUCTURE LOCATION INFORMATION			STRUCTURE TRAFFIC INFORMATION		
4	Place	FLEMINGTON	29	AADT	448
	Code	24598	30	AADT Year	2001
9	Location	S 32 T 35N R 23W	102	Direction of Traffic	2-WAY TRAFFIC
11	Milepoint	11.54 miles	109	AADT Truck Percent	10%
16	Latitude	37 D 44 M 24 S	114	Future AADT	716
17	Longitude	93 D 29 M 6 S	115	Future AADT Year	2023
UNDERRECORD INFORMATION			STRUCTURE GEOMETRIC INFORMATION		
6	Features Intersected	ASHLOCK CR	10	Inventory Rte. Vert. Clear	99 Ft. 99 In.
42B	Type of Service Under	WATERWAY	19	By pass Detour Length	24.80 miles
28B	Lanes Under Structure	00	32	Approach Roadway Width	22 Ft. 12 In.
54A	Vert. Clearance Ref.	N/A	34	Skew	60.00 Degrees
54B	Vert. Clearance	0 Ft. 0 In.	35	Struct. Flared	NO
55A	Rt. Lat Clear Ref.	N/A	47	Total Horiz. Clear	23 Ft. 11 In.
55B	Rt. Lat Clearance	0 Ft. 0 In.	48	Maximum Span Length	12 Ft. 2 In.
56	Left Lat Clearance	0 Ft. 0 In.	49	Structure Length	74 Ft. 6 In.
38	Navigation Control	PERMIT NOT REQ	50A	Left Curb/Sidewalk Width	0 Ft. 0 In.
39	Nav Vertical Clear	0 Ft. 0 In.	50B	Right Curb/Sidewalk Width	0 Ft. 0 In.
40	Nav Horizontal Clear	0 Ft. 0 In.	51	Curb to Curb Br. Width	23 Ft. 11 In.
111	Nav. Pier Protection		52	Deck Width (Out-Out)	25 Ft. 11 In.
116	Nav. Cl. Vert. Clear		53	Vert. Clearance Over Deck	99 Ft. 99 In.

Design_No = P0984



Missouri Department of Transportation
Bridge Inventory and Inspection System
Structural Inventory & Appraisal Sheet

December 2, 2024
1:57:59pm

COUNTY : POLK BRIDGE : P0984 REVIEW STATUS : APPROVED NBI STATUS : P
RECORD TYPE : ROUTE CARRIED 'ON' STRUCT RUN DATE : 4/2/2003 SUBMITTAL YEAR : 2002

LOAD RATING AND POSTING INFORMATION			MATERIAL/CONSTRUCTION INFORMATION		
31	Design Load	H 10	43A	Main Struc. Mat type	CONCRETE CONTINUOUS
41	Structure Status	A - OPEN NO RESTRICTIONS	43B	Main struc Constr. Type	CULVERT
63	Oper. Rating Meth.	NO RATING ANALYSIS PERFORMED	45	# of Main Spans	3
64	Operating Rating	55 Tons.	44A	Appr Struc. Mat type	
65	Inventory Rating Meth	NO RATING ANALYSIS PERFORMED	44B	Appr Struc. Cnstr. type	
66	Inventory Rating	17 Tons.	46	# of Approach Span	0
70	Bridge Posting Code	=>LEGAL LOADS	107	Deck Mat/Constr.	NA
PROPOSED IMPROVEMENT INFORMATION			108A	Wear Surf Mat/Constr.	NA
Sufficiency Rating 62.5 Percent			108B	Membrane Mat/Constr.	NA
Deficiency Rating NOT DEFICIENT			108C	Deck Protect Mat/Constr.	NA
Funding Eligibility			CONDITION RATING INFORMATION		
75A	Proposed Work		58	Deck Cond. Rating	N
75B	Work Done By		59	Superstructure Cond. Rating	N
76	New Struc Length	0 Ft. 0 In.	60	Substructure Cond. Rating	N
94	Struc Improve Cost	\$ 0,000	61	Channel /Channel Protection Cond. Rating	6
95	Roadway Improve Cost	\$ 0,000	62	Culvert Cond. Rating	6
96	Total Project Cost	\$ 0,000	INSPECTION INFORMATION		
97	Year of Cost Estimates	0	90	Gen. Insp Date	11 / 01
APPRAISAL RATING INFORMATION			91	Gen. Insp. Frequency	24 Months
36A	Br. Rail App. Rating	MEETS ACCEPTABLE STANDARDS	92A	Frac. Critical Inspection	N Months
36B	Transition Rail App. Rating	MEETS ACCEPTABLE STANDARDS	93A	Frac. Critical Insp. Date	
36C	Approach Rail App. Rating	MEETS ACCEPTABLE STANDARDS	92B	Underwater Inspection	N Months
36D	Rail End Treat. App. Rating	MEETS ACCEPTABLE STANDARDS	93B	Underwater Insp. Date	
67	Struc Eval App. Rating	4	92C	Special Inspection	N Months
68	Deck Geometry App. Rating	4	93C	Special Inspection Date	
69	Underclearance App. Rating	N	BORDER BRIDGE INFORMATION		
71	Waterway Adeq. App. Rating	7	98	Neighboring State Code	
72	Approach Road App. Rating	8	98B	Neighboring State % Respon	
113	Scour Assess App. Rating	8	99	Neighboring State Struc. No.	
APPROVED POSTING INFORMATION			FIELD POSTING INFORMATION		
Approved Posting Category S-1			Field Posting Category S-1		
Ton1 Ton2 Ton3			Ton1 Ton2 Ton3		
Tonnage Values for Posting Sign			Tonnage Values for Posting Sign		
General Text for Posting Sign			General Text for Posting Sign		
NO POSTING REQUIRED			NO POSTING REQUIRED		

Design_No = P0984