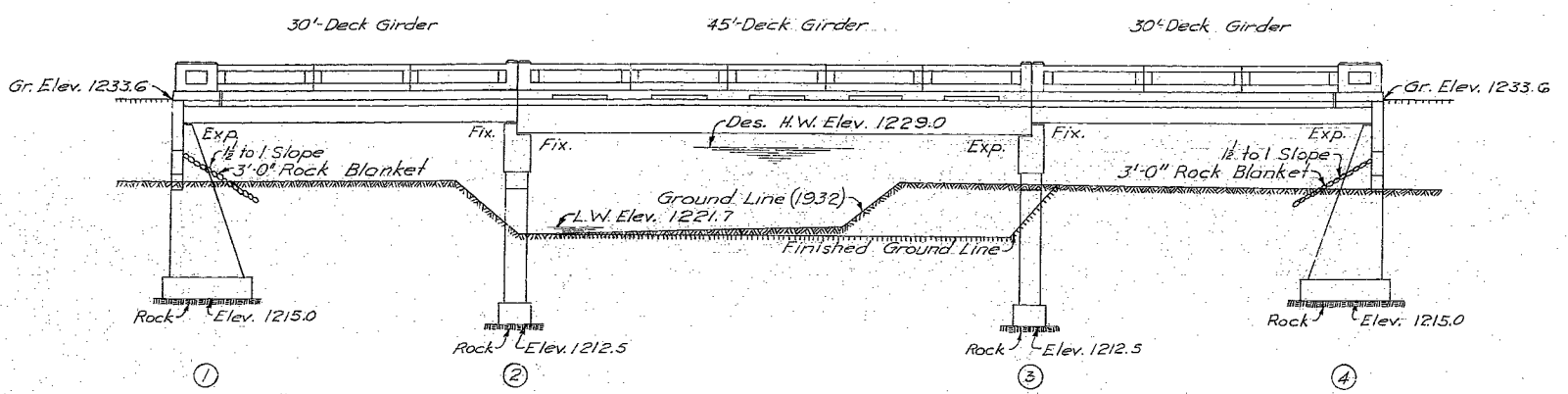
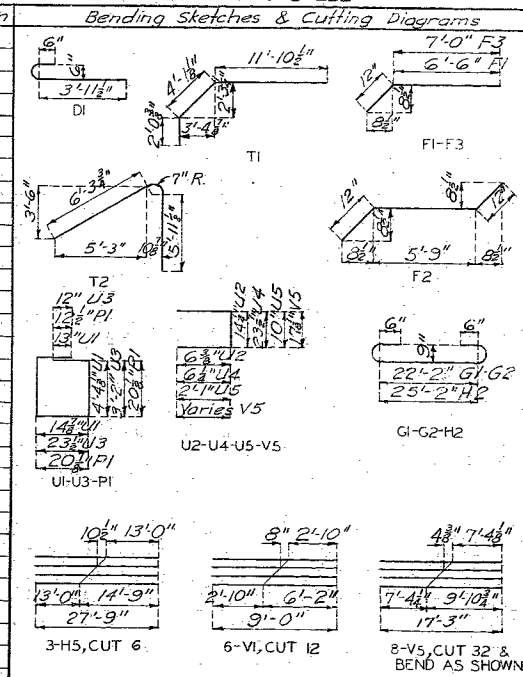


MISSOURI STATE HIGHWAY DEPARTMENT

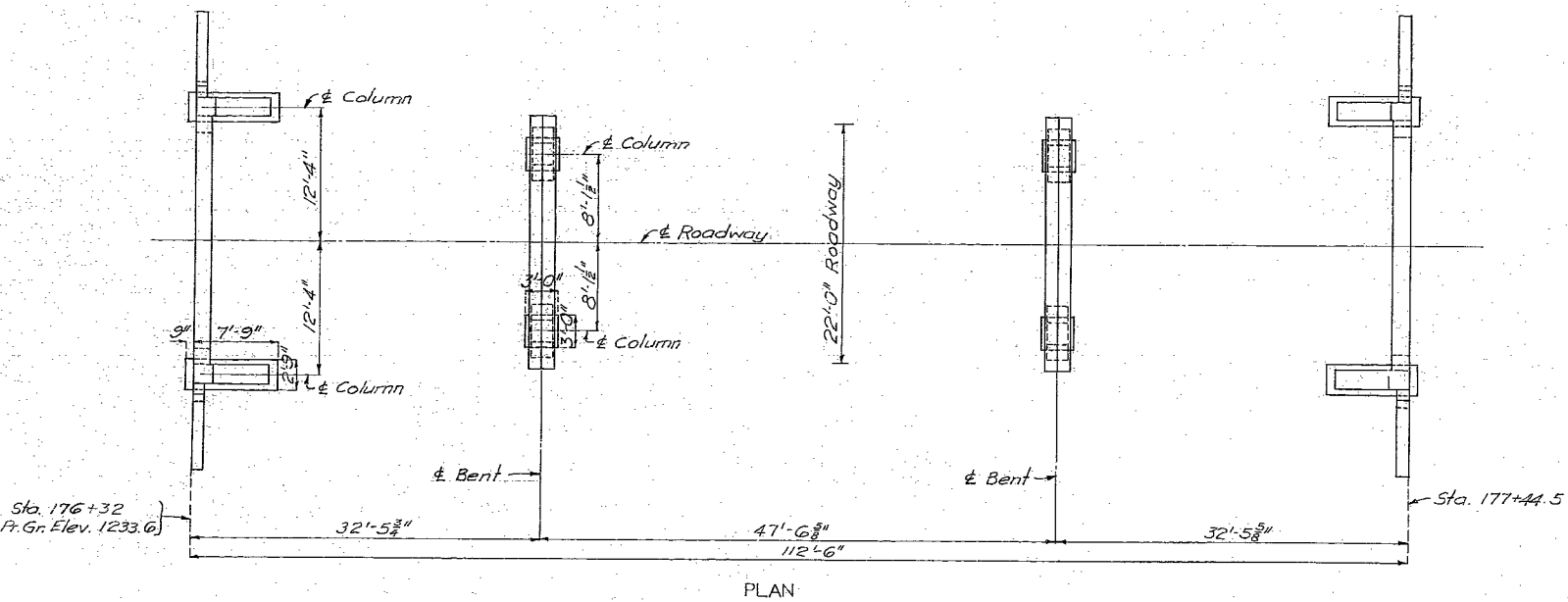
FED. ROAD DIST. NO.	STATE	FED. AID PROJ. NO.	FISCAL YEAR	SHEET NO.	TOTAL SHEETS
5	MO.	S-542(3) SE(97)	19	19	19

SUBSTRUCTURE BILL OF REINFORCING STEEL			
No.	Size	Length	Mark Location
End Bents No. 1 & 4			
40	#6	5'-3"	D1 Ftg.
16	#6	7'-6"	F1 Hch.
10	#6	26'-0"	H1 Beam
8	#11	28'-6"	H2 "
8	#5	26'-0"	H3 "
16	#6	15'-6"	H4 Wing
6	#6	27'-9"	H5 "
4	#4	26'-0"	H6 Beam
Int. Bents No. 2 & 3			
32	#6	5'-3"	D1 Ftg.
16	#6	7'-9"	F2 Hch.
16	#6	8'-0"	F3 "
12	#7	25'-6"	G1 Beam
8	#9	25'-6"	G2 "
8	#6	23'-0"	G3 "
44	#3	7'-9"	P1 Col.
46	#4	11'-3"	U3 Beam
16	#4	3'-0"	U4 "
62	#5	5'-0"	U5 "
32	#6	15'-3"	V6 Col.



GENERAL ELEVATION

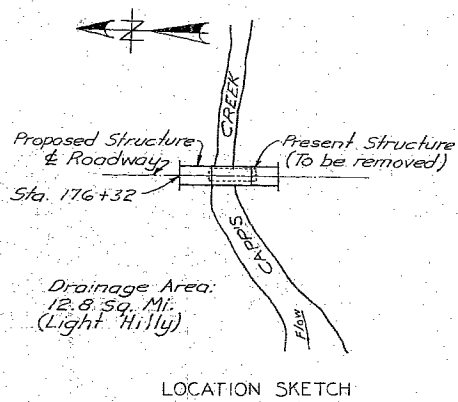
Note: All loose, shelly or disintegrated rock shall be removed and the footings placed on hard, solid, undisturbed rock. If soft rock or shale is encountered, the footings shall be carried at least 18" into and cast against vertical faces of same.



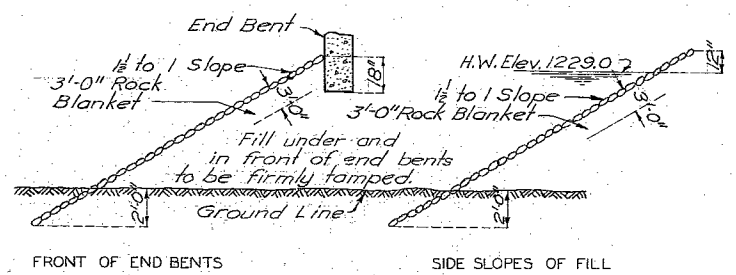
PLAN

Note: See sheets No. 3 & 4 for Bill of Reinforcing Steel for Superstructure.

GENERAL NOTES:
 Design Specifications: A. A. S. H. O. 1953.
 Loading: H15-44.
 Reinforcing Steel Stress: 18,000 #/sq. in.
 Concrete Class "B" Stress: 1,000 #/sq. in.
 All concrete shall be Class "B".
 Where joint filler is specified on the plans it shall conform with the requirements for Premoulded Material for Filler as given in Section 38-19A(1)h of the Standard Specifications.



LOCATION SKETCH



Note: 3'-0" Rock Blanket shall be placed on fills at ends of bridge as shown in sketches. See Road Plans for Quantities.

ROCK BLANKET SKETCHES

ESTIMATED QUANTITIES			
Item	Substr.	Superstr.	Total
Class 1 Excavation for Structures	Cu. Yds. 30	30	30
Class 2 Excavation for Structures	Cu. Yds. 131	131	131
Class "B" Concrete (Handrail)	Cu. Yds. 11.3	11.3	11.3
Class "B" Concrete (Except Handrail)	Cu. Yds. 67.5	119.6	187.1
Gray Iron Alloy Castings	Lbs. 2350	2350	2350
Reinforcing Steel	Lbs. 8990	41330	50320

Note: Excavation for bridge made above Elev. 1223.0 will be paid for as Class 1 Excavation for Structures.
 Excavation for bridge made below Elev. 1223.0 will be paid for as Class 2 Excavation for Structures.

T.B.M. #1 Elev. 1225.83 North End West Wing of Bridge 10' R/L Sta. 176+54.

BRIDGE OVER CAPP'S CREEK

STATE ROAD FROM ROUTE 60 SOUTH
 ABOUT 8.5 MILES S.W. OF MONETT
 PROJECT NO. S-542(3) SE(97) STA. 176+32
 BARRY COUNTY FINISHED

SUBMITTED BY: J.A. Williams DATE: 9/2/1953
 APPROVED BY: Ben M. Whitton DATE: 9/2/1953

STD. C-6503 R
STD. C-110 R3
L-573

Designed Aug. 1953 by J.D.M.
 Drawn Aug. 1953 by M.H.P.
 Checked Aug. 1953 by C.S.A.

Note: This drawing is not to scale. Follow dimensions.

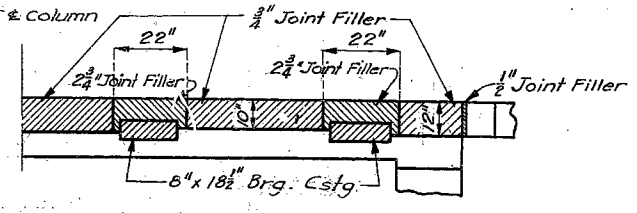
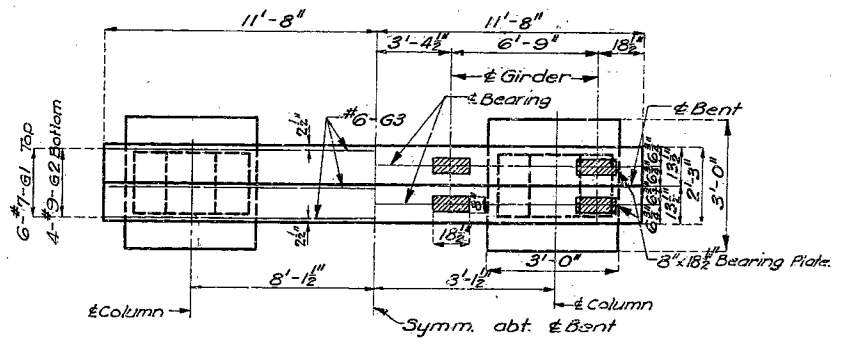
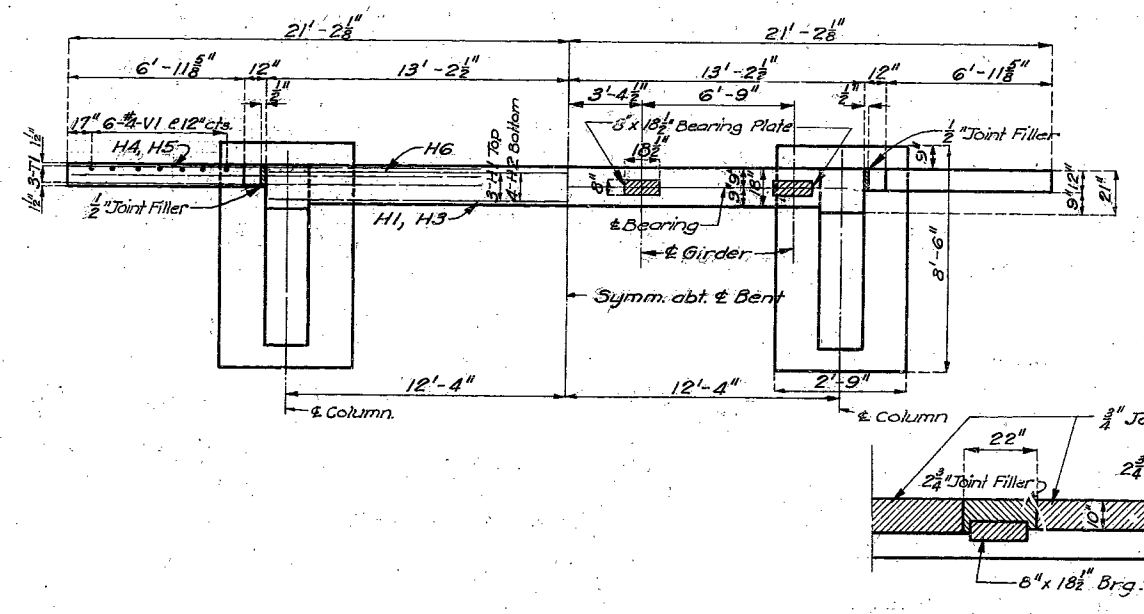
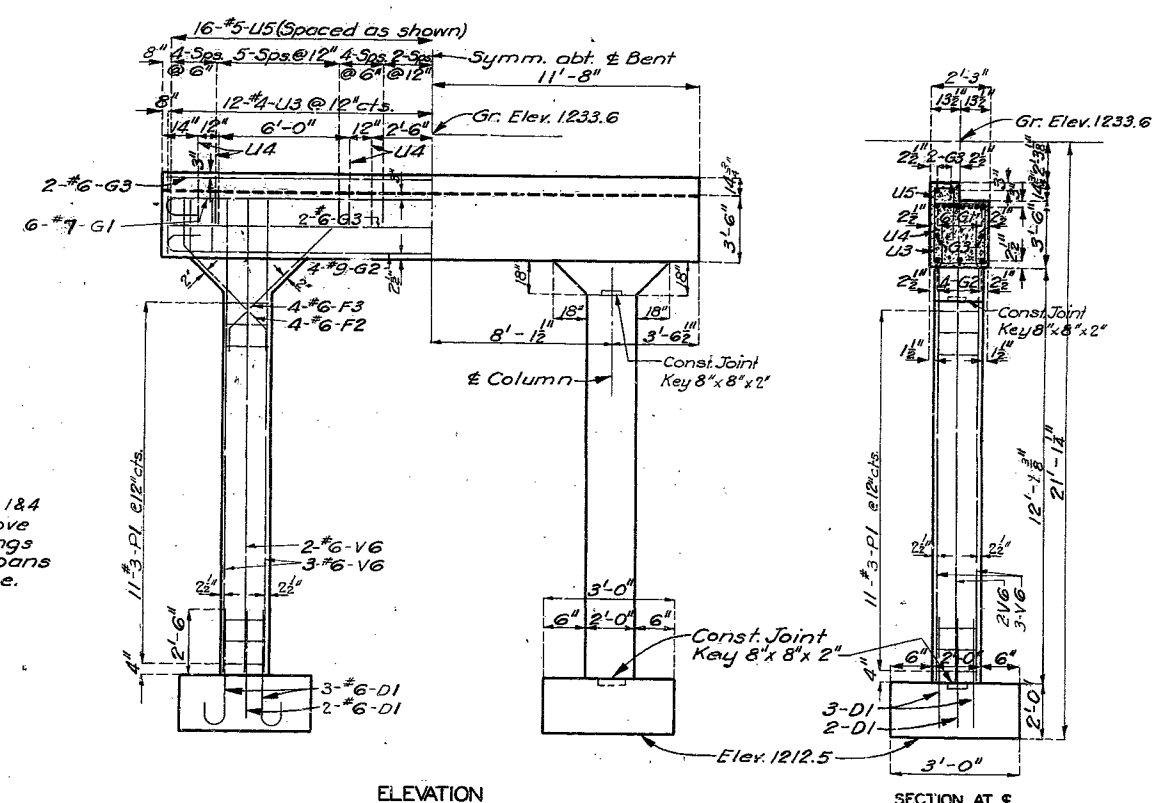
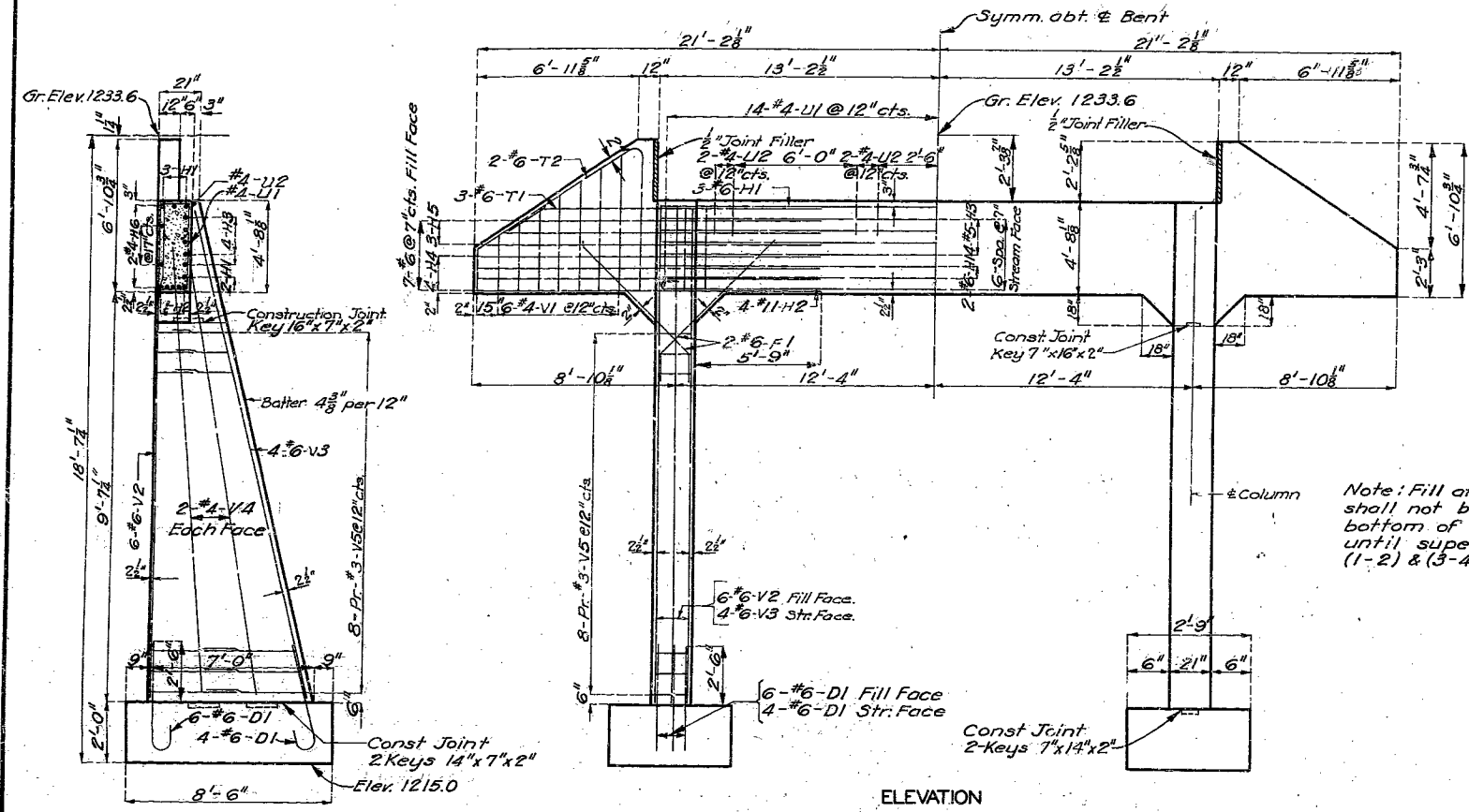
Sheet No. 1 of 4.

SEE FINAL PLANS BROWN-LINES

519

MISSOURI STATE HIGHWAY DEPARTMENT

FED. ROAD DIST. NO.	STATE	FED. AID PROJ. NO.	FISCAL YEAR	SHEET NO.	TOTAL SHEETS
5	MO.	S-542(3) SE(97)	19		



DETAILS OF END BENTS NO. 1 & 4

DETAILS OF INTERMEDIATE BENTS NO. 2 & 3

BRIDGE OVER CAPP'S CREEK
 STATE ROAD FROM ROUTE 60 SOUTH
 ABOUT 8.5 MILES S.W. OF MONETT
 PROJECT NO. S-542(3) SE(97) STA. 176+32
BARRY COUNTY

Note: Fill at end bents No. 1 & 4 shall not be carried above bottom of beam and wings until superstructure spans (1-2) & (3-4) are in place.

Note: This drawing is not to scale. Follow dimensions.

025

Assembled Aug. 1953 by M.H.P. & J.C.G.
 Checked Aug. 1953 by C.S.A.

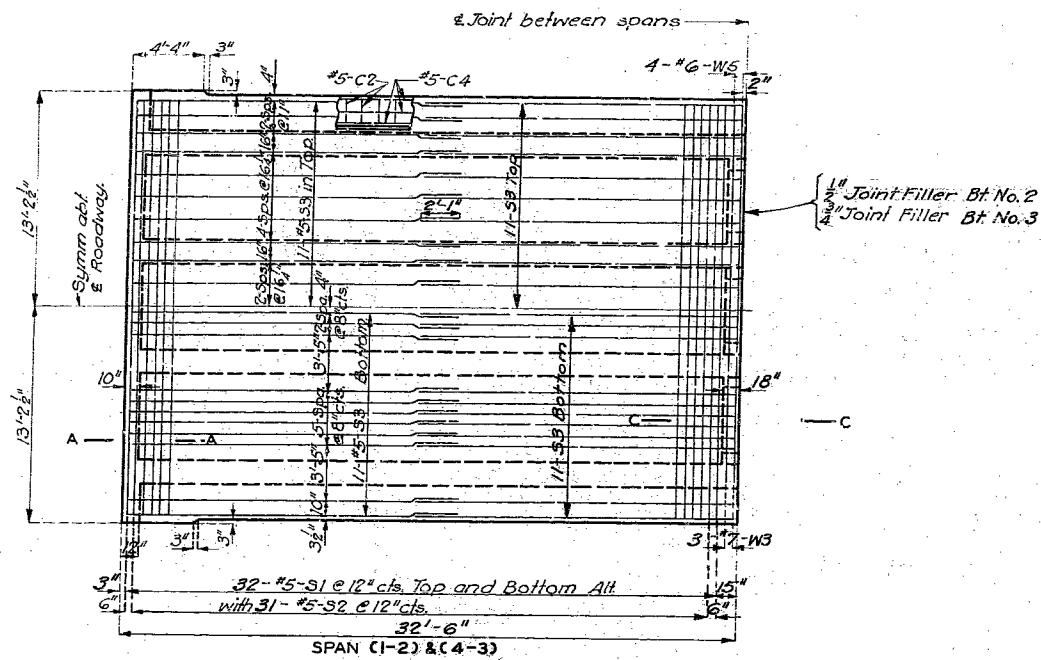
Deck Girder - 2 Column End Bent - 2 Column Int. Bent

SEE EQUAL PLANS BROWN-LINES

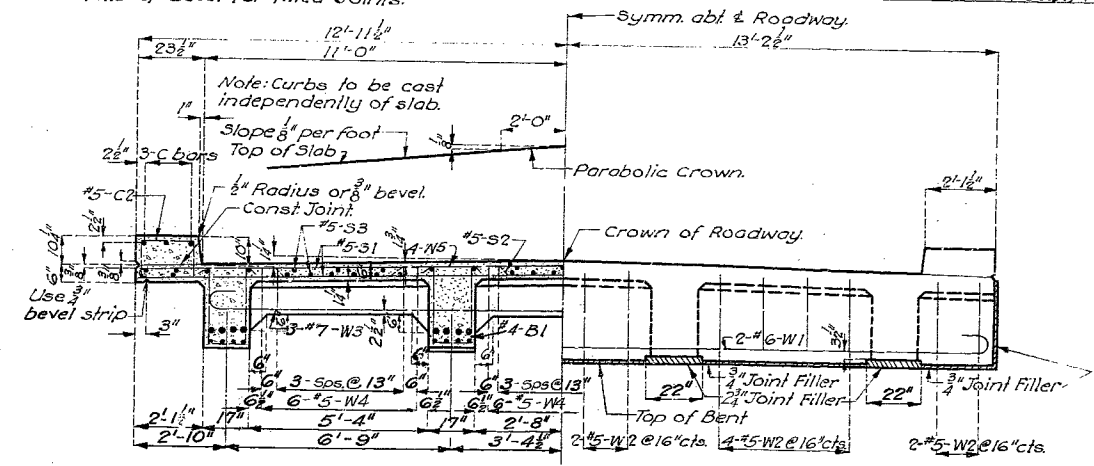
MISSOURI STATE HIGHWAY DEPARTMENT

Note: See Std. C-6508 R for handrail, curb and details of bevel for filled joints.

FED. ROAD DIST. NO.	STATE	FED. AID PROJ. NO.	FISCAL YEAR	SHEET NO.	TOTAL SHEETS
5	MO	5-542(3) SE(97)	19		

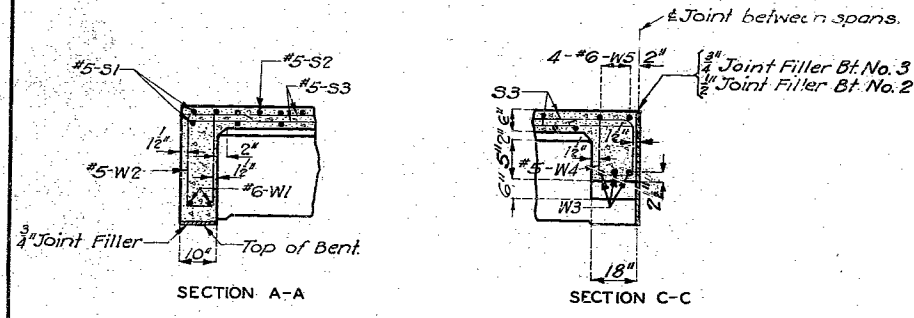


PLAN OF SLAB SHOWING REINFORCEMENT



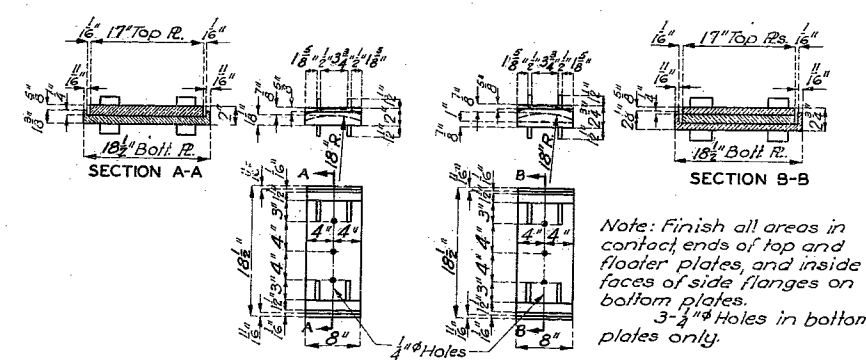
HALF SECTION THRU SPAN
(Near Intermediate Bent)

HALF ELEVATION AT END BENT



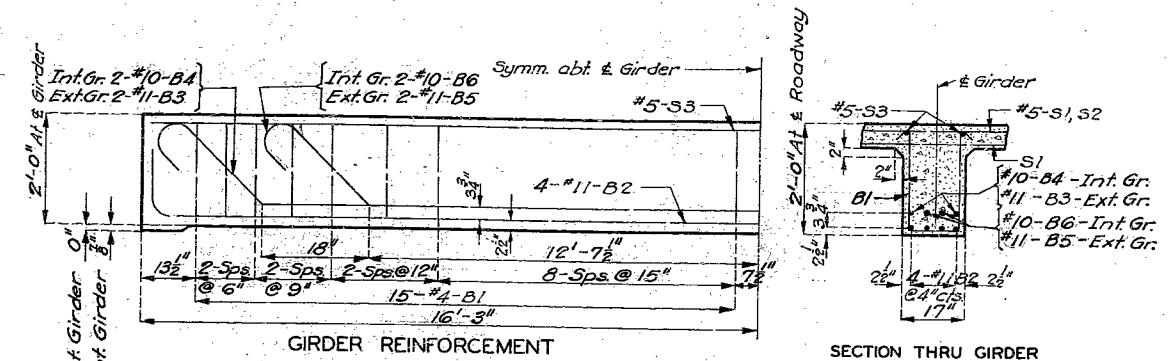
SECTION A-A

SECTION C-C



FIXED END
EXP. END
GRAY IRON ALLOY BEARING PLATES

Note: Bearing plates to be furnished in sets. Each set consisting of 1 top plate and 1 bottom plate for fixed end and 1 top plate, 1 floater plate and 1 bottom plate for expansion end.
Required 8 - Sets of 8\"/>



GIRDER REINFORCEMENT

SECTION THRU GIRDER

BILL OF REINFORCING STEEL - SPANS (1-2) & (4-3)					
No	Size	Length	Mark	Location	Bending sketches
16	#5	3'-9"	C1	Curb	
116	#5	3'-6"	C2	"	
4	#5	4'-0"	C3	"	
24	#5	17'-3"	C4	"	
128	#5	25'-6"	S1	Slab	
62	#5	27'-9"	S2	"	
172	#5	17'-3"	S3	"	
4	#6	28'-3"	W1	End Meb	
32	#5	5'-9"	W2	"	
6	#7	23'-6"	W3	"	
36	#5	5'-0"	W4	"	
8	#6	25'-6"	W5	"	
240	#4	5'-3"	B1	Girder	
32	#11	34'-6"	B2	"	
8	#11	34'-9"	B3	"	
8	#10	34'-9"	B4	"	
8	#11	31'-9"	B5	"	
8	#10	31'-9"	B6	"	
24	#4	3'-9"	R1	End Post	
48	#4	9"	R2	Curb	
40	#4	7'-3"	R3	Subpost	
56	#6	3'-9"	R4	Post	
528	#6	2'-4"	R5	Baluster	
16	#4	10'-9"	R6	Rail	
16	#4	8'-9"	R7	"	
16	#4	9'-9"	R8	"	

Note: Bars in the above unit to be billed and tagged separately.

BRIDGE OVER CAPP'S CREEK

STATE ROAD FROM ROUTE 60 SOUTH
ABOUT 8.5 MILES S.W. OF MONETT
PROJECT NO. 5-542 (3) SE(97) STA. 176+32

BARRY COUNTY

FINISHED

Assembled Aug. 1953 by M.H.P. & J.C.G.
Checked Aug. 1953 by C.S.A.

Note: This drawing is not to scale. Follow dimensions.

Sheet No. 3 of 4.

L-573

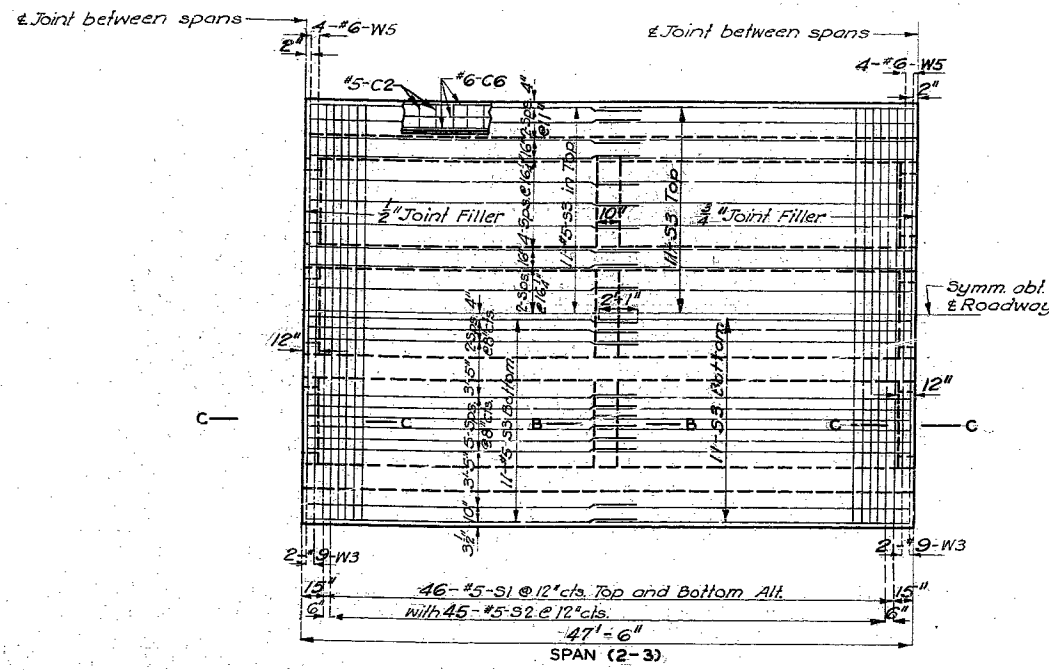
D.Gars - Square - H/18-20' Rdwy.
Revised July 1953

521

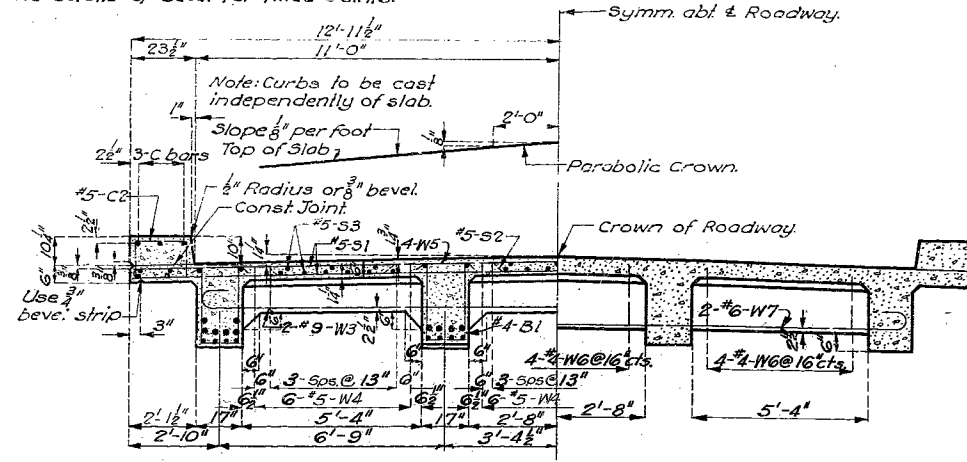
MISSOURI STATE HIGHWAY DEPARTMENT

Note: See Std. C-6508 R for handrail, curb and details of bevel for filled joints.

FED. ROAD DIST. NO.	STATE	FED. AID PROJ. NO.	FISCAL YEAR	SHEET NO.	TOTAL SHEETS
5	MO	S-542 (3) SE(97)	19		



PLAN OF SLAB SHOWING REINFORCEMENT

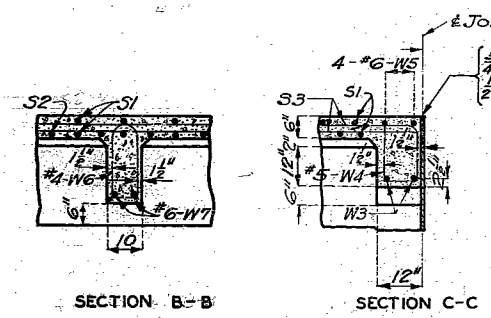


HALF SECTION THRU SPAN (Near Intermediate Bent)

HALF SECTION THRU SPAN (Near Intermediate Web)

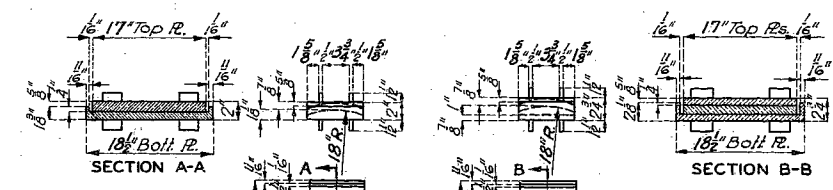
BILL OF REINFORCING STEEL - SPAN (2-3)					
No	Size	Length	Mark	Location	Bending sketches
56	#5	3'-6"	C2	Curb	C2
12	#6	25'-0"	C6	"	
92	#5	25'-6"	S1	Slab	W4
45	#5	27'-9"	S2	"	
86	#5	24'-9"	S3	"	
4	#9	23'-9"	W3	End We.	W3-W7
36	#5	5'-9"	W4	"	
8	#6	26'-6"	W5	"	
12	#4	9'-6"	W6	Int. Web	
2	#6	23'-6"	W7	"	B2
148	#4	7'-6"	B1	Girder	
16	#11	49'-6"	B2	"	
8	#11	50'-9"	B3	"	
8	#11	45'-3"	B4	"	
4	#11	39'-6"	B5	"	B3-B4-B5
40	#4	9"	R2	Curb	
36	#4	7'-3"	R3	Subpost	
16	#6	5'-9"	R4	Post	
440	#6.66	2'-4"	R5	Baluster	
16	#4	9'-9"	R9	Rail	
24	#4	8'-9"	R10	"	

Note: Bars in the above unit to be billed and tagged separately.



SECTION B-B

SECTION C-C



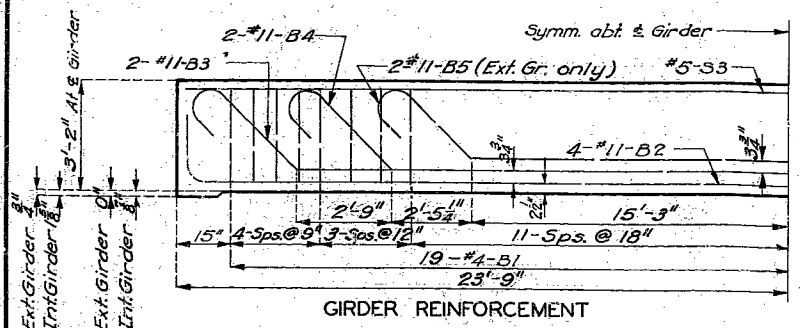
SECTION A-A

SECTION B-B

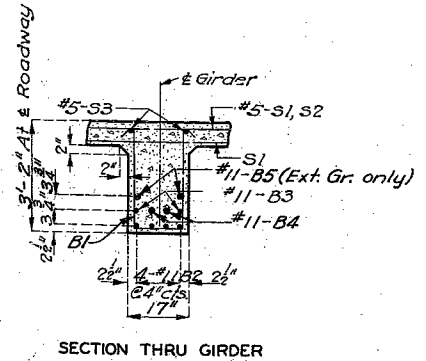
FIXED END EXP. END GRAY IRON ALLOY BEARING PLATES

Note: Finish all areas in contact, ends of top and flange plates, and inside faces of side flanges on bottom plates. 3/4\"/>

Note: Bearing plates to be furnished in sets. Each set consisting of 1 top plate and 1 bottom plate for fixed end and 1 top plate, 1 flange plate and 1 bottom plate for expansion end. Required 4-Sets of 8'x17\"/>



GIRDER REINFORCEMENT



SECTION THRU GIRDER

522

BRIDGE OVER CAPP'S CREEK

STATE ROAD FROM ROUTE 60 SOUTH
ABOUT 8.5 MILES S.W. OF MONETT
PROJECT NO. S-542 (3) SE(97) STA. 176+32

BARRY COUNTY

Assembled Aug. 1953 by M.H.P. & J.C.G.
Checked Aug. 1953 by C.S.A.

Note: This drawing is not to scale. Follow dimensions.

Sheet No. 4 of 4.

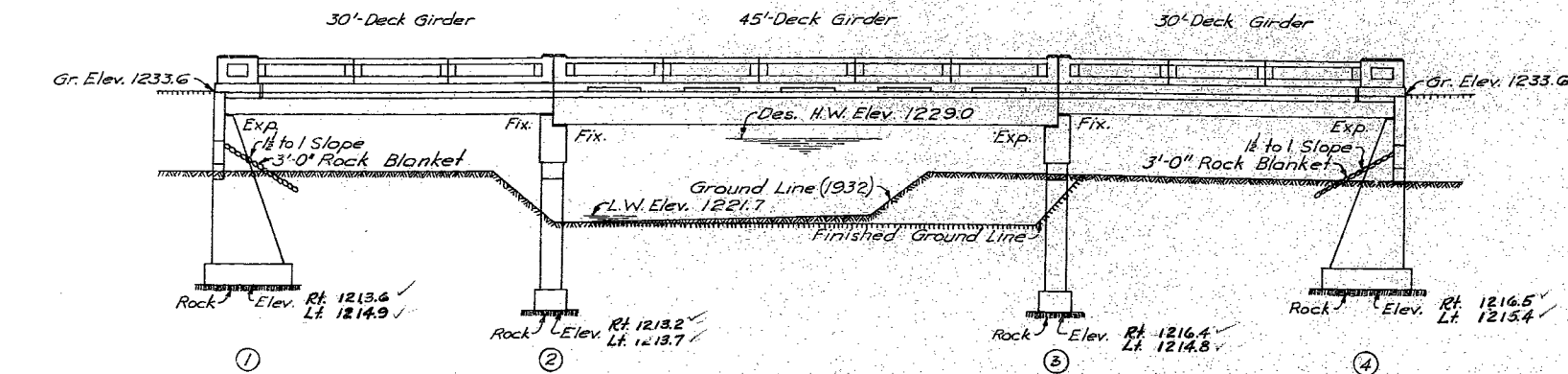
L-573

NO CONSTRUCTION CHANGES

D.Gra. - Square - H/15 - 22' Rdwy.
Revised July 1953

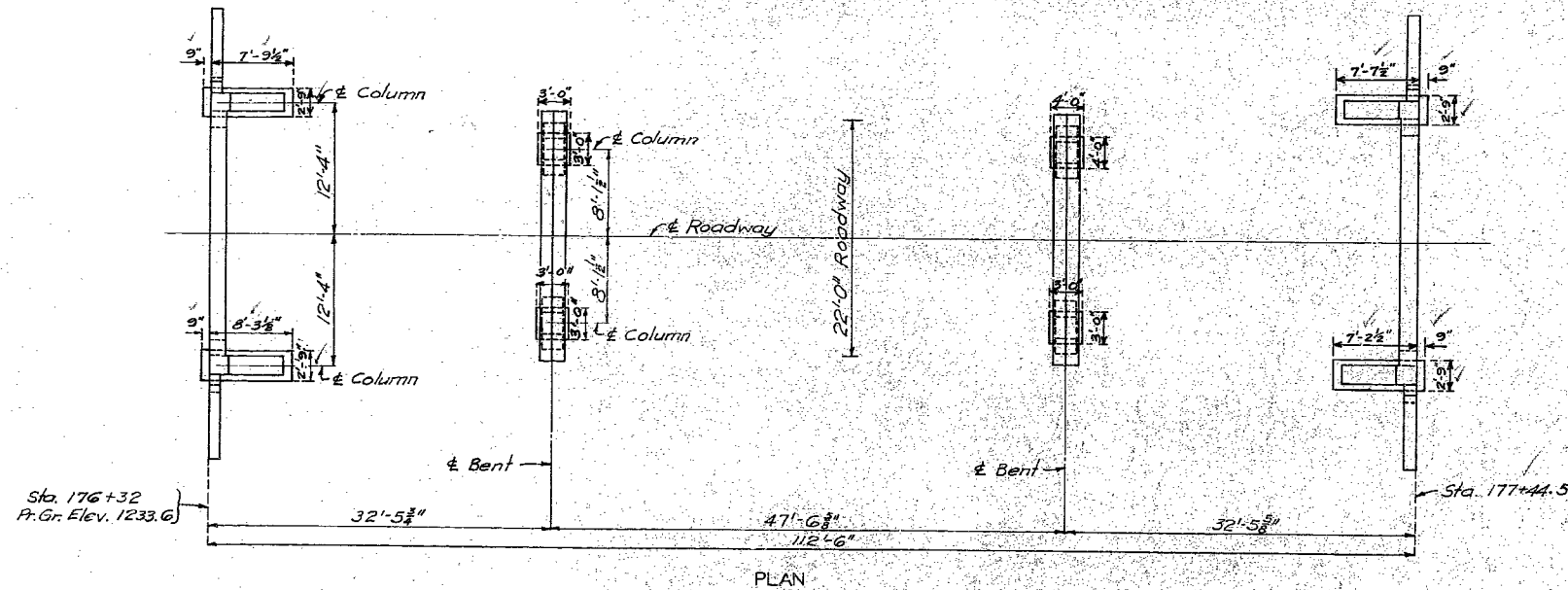
MISSOURI STATE HIGHWAY DEPARTMENT

FED. ROAD DIST. NO.	STATE	FED. AID PROJ. NO.	FISCAL YEAR	SHEET NO.	TOTAL SHEETS
5	MO.	S-542(3) SE(97)	19		



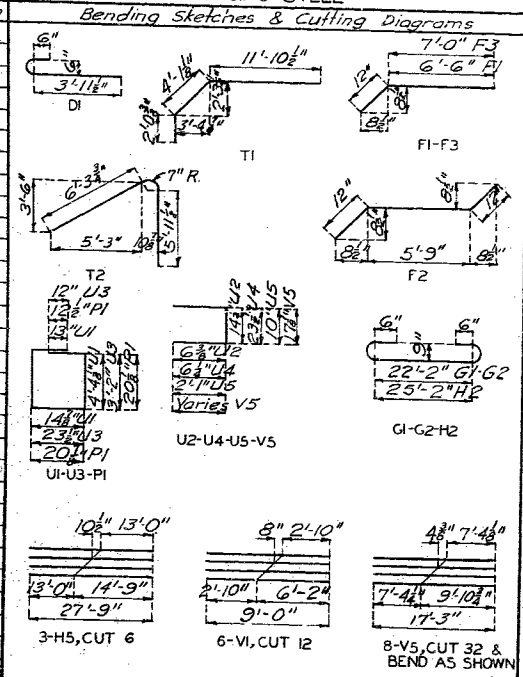
GENERAL ELEVATION

Note: All loose, shelly or disintegrated rock shall be removed and the footings placed on hard, solid, undisturbed rock. If soft rock or shale is encountered, the footings shall be carried at least 18" into and cast against vertical faces of same.



PLAN

SUBSTRUCTURE BILL OF REINFORCING STEEL			
No.	Size	Length	Mark Location
End Bents No. 1 & 4			
40	#6	5'-3"	D1 Ftg.
16	#6	7'-6"	F1 Hch.
10	#6	26'-0"	H1 Beam
8	#11	29'-6"	H2 "
8	#5	26'-0"	H3 "
16	#6	15'-6"	H4 Wing
6	#6	27'-9"	H5 "
4	#4	26'-0"	H6 Beam
Int. Bents No. 2 & 3			
32	#6	5'-3"	D1 Ftg.
16	#6	7'-9"	F2 Hch.
16	#6	8'-0"	F3 "
12	#7	25'-6"	G1 Beam
8	#9	25'-6"	G2 "
8	#6	23'-0"	G3 "
44	#3	7'-9"	P1 Col.
46	#4	11'-3"	U3 Beam
16	#4	3'-0"	U4 "
62	#5	5'-0"	U5 "
32	#6	15'-3"	V6 Col.
16	#6	3'-8"	H.Flg.#3



Note: See sheets No. 3 & 4 for Bill of Reinforcing Steel for Superstructure.

GENERAL NOTES:
 Design Specifications: A.A.S.H.O. 1953.
 Loading: H15-44.
 Reinforcing Steel Stress: 18,000*₁/_{in}².
 Concrete Class "B" Stress: 1,000*₁/_{in}².
 All concrete shall be Class "B".
 Where joint filler is specified on the plans it shall conform with the requirements for Premoulded Material for Filler as given in Section 38-19A(1)h of the Standard Specifications.

FINAL QUANTITIES			
Item		Substr.	Superstr. Total
Class 1 Excavation for Structures	Cu. Yds.	35.5	35.5
Class 2 Excavation for Structures	Cu. Yds.	124.0	124.0
Class "B" Concrete (Handrail)	Cu. Yds.		11.3
Class "B" Concrete (Except Handrail)	Cu. Yds.	66.9	119.6
Gray Iron Alloy Castings	Lbs.	2350	2350
Reinforcing Steel	Lbs.	9140	41830
Seal Course Concrete	Cu. Yds.	1.1	1.1
Class 2 Excavation Below Plan Elev.	Cu. Yds.	2.9	2.9

Note: Excavation for bridge made above Elev. 1223.0 will be paid for as Class 1 Excavation for Structures.
 Excavation for bridge made below Elev. 1223.0 will be paid for as Class 2 Excavation for Structures.

T.B.M. #1 Elev. 1225.83 North End West Wing of Bridge 10' Rt. Sta. 176+54.

BRIDGE OVER CAPP'S CREEK
 STATE ROAD FROM ROUTE 60 SOUTH
 ABOUT 8.5 MILES S.W. OF MONETT
 PROJECT NO. S-542(3) SE(97) STA. 176+32
 BARRY COUNTY.

SUBMITTED BY: J.A. Williams DATE: 9/2/1953
 APPROVED BY: Rep. M. Whitton DATE: 9/2/1953

FINISHED
STD.C-6508 R
STD.C-110 R3
L-573

523

Designed Aug. 1953 by J.D.M.
 Drawn Aug. 1953 by M.H.P.
 Checked Aug. 1953 by C.S.A.

Note: This drawing is not to scale. Follow dimensions.

