

## **ADDENDA COVER PAGE**

The following Addenda have been currently released for this project, and are attached to this cover page:

- Addendum #1, 11/12/2024

Please stay tuned for additional Addenda, if any, for this project. This cover sheet will reflect additional Addenda and the attachments to this cover page will include any and all current Addenda as they are published.

**Note:** Contractor is required to acknowledge receipt of all Addenda. Acknowledgement of addenda (addendum number and date of receipt) shall be recorded within the submitted bidder's forms within the sealed envelope, easily visible so they may be recognized and recorded at the bid opening. Failure to acknowledge receipt could result in Contractor not being recommended for award of contract.

# ADDENDUM # 1

TO THE DRAWINGS AND SPECIFICATIONS FOR:  
**Route K and N Improvements J6S3668/CMAQ 7302(696)**  
City of O'Fallon, Missouri  
100 North Main Street  
O'Fallon, Missouri 63366

City of O'Fallon, Missouri  
100 North Main Street  
O'Fallon, MO 63366  
636-379-5492  
636-978-4144 Fax  
E-mail: tjkelley@ofallonmo.gov

NOVEMBER 12, 2024

## INFORMATION

---

The following items have been amended for the Route K and N Improvements Project Specifications:

- **Bid Form** – Has been updated to reflect the correct signal poles and quantities. Revised bid form and plan sheet 41 are attached to this addendum.
- **Question** – Bid doc states there is a bidder's questionnaire to be completed in the bid book, could not find questionnaire.
  - **Answer** – Questionnaire was not placed in the bid book. Therefore, it will not be required and should not be completed. Bidder will need to be a MoDOT approved contractor to bid.
- **Question** – Could not find DBE percentage.
  - **Answer** – DBE percentage is on Page 14. DBE goal is 8%.

Please ensure your bids comply with this addendum, as noted in the forms accompanying this notice.

**END OF ADDENDUM**

BID FORM  
Route K and Route N Improvements - J6S3668  
City of O'Fallon, MO

	ITEM NO.	DESCRIPTION	UNITS	QUANTITY	UNIT PRICE	EXTENSION
<b>ROADWAY ITEMS</b>						
1	2022010	REMOVAL OF IMPROVEMENTS	L.S.	1.0		
2	2031000	CLASS A EXCAVATION	C.Y.	1808.1		
3	3040504	TYPE 5 AGGREGATE FOR BASE (4 IN. THICK)	S.Y.	3804.8		
4	5021110	CONCRETE PAVEMENT (10 IN. NON-REINF)	S.Y.	3251.7		
5	6044011	PIPE COLLAR, TYPE A	EACH	1.0		
6	6083008	CONCRETE MEDIAN	S.Y.	296.6		
7	6085008	PAVED APPROACH, 8 IN.	S.Y.	134.2		
8	6091041	CONCRETE GUTTER TYPE A	L.F.	18.0		
9	6091052	CURB AND GUTTER TYPE B	L.F.	1208.0		
10	6092021	INTEGRAL CURB (OVER 6 IN. HEIGHT) TYPE A	L.F.	150.0		
11	6169902	CHANGEABLE MESSAGE SIGN, CONTRACTOR FURNISHED AND RETAINED	EACH	4.0		
12	6169901	LUMP SUM TRAFFIC CONTROL	L.S.	1.0		
13	6181000	MOBILIZATION	L.S.	1.0		
14	6274000	CONTRACTOR FURNISHED SURVEYING AND STAKING	L.S.	1.0		
15	7261018	18 IN. PIPE GROUP A	L.F.	767.0		
16	7261024	24 IN. PIPE GROUP A	L.F.	14.0		
17	7311022	MODOT TYPE A 2' X 2' GRATE INLET	EACH	1.0		
18	7311042	MODOT TYPE A 4' X 2' GRATE INLET	EACH	3.0		
19	7319902	MSD 2-GRATE INLET WITH SIDE INTAKE	EACH	1.0		
20	7319902	INLET ADJUSTMENTS	EACH	2.0		
21	8051000A	SEEDING - COOL SEASON GRASSES	AC	1.4		
22	8061007A	CURB INLET CHECK	EACH	11.0		
23	8061016	SEDIMENT REMOVAL	C.Y.	28.0		
24	8061019	SILT FENCE	L.F.	2832.5		
<b>ROADWAY ITEMS SUBTOTAL</b>						
<b>PEDESTRIAN ITEMS</b>						
25	6081010	CONCRETE CURB RAMP	S.Y.	35.8		
26	6081012	TRUNCATED DOMES	S.F.	195.0		
27	6086004	CONCRETE SIDEWALK, 4 IN.	S.Y.	477.1		
<b>PEDESTRIAN ITEMS SUBTOTAL</b>						
<b>LIGHTING ITEMS</b>						
28	9011064	LIGHTING POLE, 45 FT. OR 13.5 M, TYPE AT DESIGN 3	EACH	4.0		
29	9011115	BRACKET ARM, 15' OR 4.6 M	EACH	4.0		
30	9011311	LUMINAIRE, LED-A	EACH	4.0		
31	9016112	PULL BOX, PREFORMED CLASS 3	EACH	4.0		
32	9017110	CABLE, 10 AWG 1 CONDUCTOR, POLE AND BRACKET	L.F.	510.0		
33	9018245	POLE FOUNDATION (45 FT. OR 13.5 M MOUNTING HEIGHT)	EACH	4.0		
<b>LIGHTING ITEMS SUBTOTAL</b>						
<b>SIGNAL/ITS ITEMS</b>						
34	9020213	SIGNAL HEAD, TYPE 3S	EACH	2.0		
35	9020513	SIGNAL HEAD, TYPE 3B	EACH	14.0		
36	9022708	POST, SIGNAL 8 FT.	EACH	3.0		
37	9023150	POST, TYPE CL, 50 FT. ARM OR 15.2 M ARM	EACH	1.0		
37A	9023250	POST, TYPE C, 50 FT. ARM or 15.2 M ARM	EACH	1.0		
38	9023240	POST, TYPE C, 40 FT. ARM OR 12.2 M ARM	EACH	<del>2.0</del> 1.0		
39	9023245	POST, TYPE C, 45 FT. ARM OR 13.7 M ARM	EACH	1.0		
40	9025200	CONDUIT, 2 IN., TRENCH WITH TRACER WIRE	L.F.	320.0		
41	9025300	CONDUIT, 3 IN., TRENCH WITH TRACER WIRE	L.F.	90.0		
42	9027200	CONDUIT, 2 IN., PUSHED WITH TRACER WIRE	L.F.	890.0		
43	9027300	CONDUIT, 3 IN., PUSHED WITH TRACER WIRE	L.F.	400.0		
44	9028208	CABLE, 8 AWG 1 CONDUCTOR, POWER	L.F.	190.0		
45	9028302	CABLE, 12 AWG 2 CONDUCTOR	L.F.	1850.0		

46	9028308	CABLE, 16 AWG 2 CONDUCTOR	L.F.	1330.0		
47	9028310	CABLE, 16 AWG 5 CONDUCTOR	L.F.	1360.0		
48	9028311	CABLE, 16 AWG 7 CONDUCTOR	L.F.	4040.0		
49	9028820	PULL BOX, CONCRETE, STANDARD	EACH	4.0		
50	9028821	PULL BOX, CONCRETE, DOUBLE, TYPE A	EACH	1.0		
51	9029100	BASE, CONCRETE	C.Y.	16.4		
52	9029401	TEMPORARY TRAFFIC SIGNALS AND LIGHTING	L.S.	1.0		
53	9029407	TEMPORARY TRAFFIC DETECTION, VIDEO DETECTION SYSTEM	L.S.	1.0		
54	9029901	TRAFFIC SIGNAL MAINTENANCE & PROGRAMMING	L.S.	1.0		
55	9029902	COUNTDOWN PEDESTRIAN SIGNAL HEAD, TYPE 1S	EACH	6.0		
56	9029902	RELOCATE EXISTING LED STREET NAME SIGNS	EACH	4.0		
57	9029902	NETWORK CONNECTED SIGNAL MONITOR	EACH	1.0		
58	9029902	AUDIBLE PEDESTRIAN PUSHBUTTON AND SIGNING WITH VERBAL WALK MESSAGE	EACH	6.0		
59	9029902	SL DISTRICT TRAFFIC SIGNAL DETECTION SYSTEM	EACH	1.0		
60	9029902	COMBINATION PAD MOUNTED 120V/240V POWER SUPPLY AND LIGHTING CONTROLLER WITH U	EACH	1.0		
61	9035004A	SH-FLAT SHEET	S.F.	154.0		
62	9039902	SIGN RELOCATION	EACH	2.0		
63	9109902	ITS PULL BOX WITH CONCRETE PAD, PREFORMED CLASS 5	EACH	1.0		
64	9109902	CCTV CAMERA ASSEMBLY	EACH	1.0		
65	9109902	INSTALL CCTV CAMERA ASSEMBLY	EACH	1.0		
66	9109903	CCTV CAMERA CABLE	EACH	150.0		
67	9109902	REMOVE IN-PAVEMENT WIRELESS DETECTION SYSTEM PER INTERSECTION	EACH	1.0		
68	9109902	MODOT BURIED CABLE DRIVEABLE DELINEATOR POST	EACH	2.0		
69	9109902	FIBER OPTIC FUSION SPLICE	EACH	30.0		
70	9109902	FIBER OPTIC PIGTAIL	EACH	20.0		
71	9109902	FIBER OPTIC JUMPER	EACH	12.0		
72	9109902	RACK-MOUNTED INTERCONNECT CENTER	EACH	1.0		
73	9109902	RACK-MOUNTED SPLICE ENCLOSURE	EACH	1.0		
74	9109902	RACK-MOUNTED PATCH PANEL ENCLOSURE	EACH	1.0		
75	9109902	INSTALL COMMISSION FURNISHED TRAFFIC SIGNAL CONTROLLER	EACH	1.0		
76	9109902	INSTALL MODOT FURNISHED IP-ADDRESSABLE POWER STRIP	EACH	1.0		
77	9109903	RELOCATE FIBER OPTIC CABLE, 24 STRAND, SINGLE MODE	L.F.	250.0		
<b>SIGNAL/ITS ITEMS SUBTOTAL</b>						
<b>STRIPING ITEMS</b>						
78	6200015	PREFORMED THERMOPLASTIC PAVEMENT MARKING, 24 IN. WHITE	L.F.	162.0		
79	6200021	PREFORMED THERMOPLASTIC PAVEMENT MARKING, LEFT/RIGHT ARROW	EACH	25.0		
80	6200042	PREFORMED THERMOPLASTIC PAVEMENT MARKING, 12 IN. WHITE, YIELD LINE TRIANGLES	EACH	94.0		
81	6205902A	6 IN. WHITE HIGH BUILD WATERBORNE PAVEMENT MARKING PAINT, TYPE L BEADS	L.F.	4673.0		
82	6205901A	4 IN. YELLOW HIGH BUILD WATERBORNE PAVEMENT MARKING PAINT, TYPE L BEADS	L.F.	5389.7		
83	6206108A	8 IN. WHITE HIGH BUILD WATERBORNE PAVEMENT MARKING PAINT, TYPE P BEADS	L.F.	448.0		
<b>STRIPING ITEMS SUBTOTAL</b>						
			<b>TOTAL:</b>			

**TOTAL BID (BASE BID) NUMBERS:** \_\_\_\_\_

**TOTAL BID (BASE BID) WRITTEN:** \_\_\_\_\_

Main project data table with columns: POST NUMBER, PULL BOX NUMBER, LOCATION (APPROACH, STATION, OFFSET), BASE (A, F, C), PULL BOX (PREFORMED, CONCRETE), POST (TYPE C & CL, TYPE B & BL), and LUMINAIRE BRACKET ARM\*.

SUBTOTAL and TOTAL rows for the main project data table.

SIGNAL HEADS

SIGNAL HEADS table with columns: SPAN NUMBER, POST NUMBER, FACE NUMBER, LUMINAIRE 150W SODIUM, INDICATIONS \*, VISORS \*, LOUVERS \*, BACKPLATE\*, RETROREFLECTIVE BACKPLATE\*, BRACKET\*, ONE-FACE SECTION, TWO-FACE SECTIONS.

SPAN WIRE POLES table with columns: SUBTOTAL, TOTAL, POST NUMBER, WOOD CLASS IV, STEEL (A10 BASE REQUIRED).

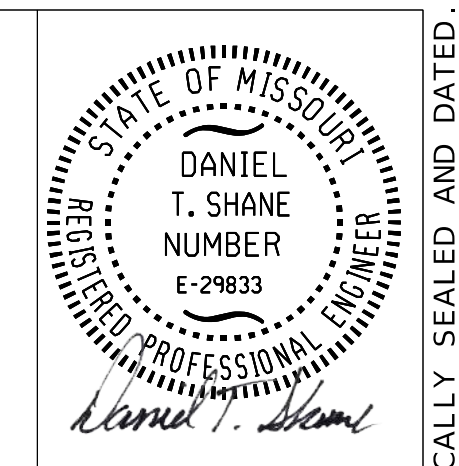
Summary table for Signal Heads with rows: SUBTOTAL OPTICALLY LIMITED, SUBTOTAL CONVENTIONAL, SUBTOTAL COMBINATION OL & CONV, TOTAL OPTICALLY LIMITED, TOTAL CONVENTIONAL, TOTAL COMBINATION OL & CONV.

SPAN WIRE CABLE SPANS table with columns: SPAN NUMBER, FROM POST, TO POST, SINGLE MESSENGER ASSEMBLY (LIN. FT.), MESSENGER ASSEMBLY WITH TETHER (LIN. FT.), SUBTOTAL, TOTAL.

REMARKS: ALL LENGTHS AND SPACINGS ARE IN FEET UNLESS OTHERWISE INDICATED. \* ITEMS FOR WHICH SEPARATE PAYMENT WILL NOT BE MADE. \*\* SEE STANDARD PLANS 902.10 AND 902.30 FOR CONCRETE REQUIREMENTS ON BASES. \*\*\* USE D3-16 FOR ONE LINE. USE D3-18 FOR TWO LINE. SIGNAL STRUCTURES WHICH WILL EXCEED THE DIMENSION LIMITS SHOWN ON STANDARD PLAN SHEETS IN SECTION 902 AND ANY OTHER INSTALLATION WHERE THE DETAILS OF CONSTRUCTION ARE NOT FURNISHED IN THE CONTRACT PLANS, SHALL BE DESIGNED BY A PROFESSIONAL ENGINEER IN ACCORDANCE WITH THE 2001 AASHTO STANDARD SPECIFICATIONS FOR STRUCTURAL SUPPORTS FOR HIGHWAY SIGNS, LUMINAIRES AND TRAFFIC SIGNALS, 4TH EDITION, AND LATEST INTERIMS. THE STRUCTURE SHALL BE DESIGNED AS IMPORTANCE CATEGORY I FOR FATIGUE WITH A 50-YEAR DESIGN LIFE. THE CONTRACTOR SHALL SUBMIT A SET OF SHOP DETAIL DRAWINGS INCLUDING WELD PROCEDURE SPECIFICATIONS AND DESIGN COMPUTATIONS FOR MODOT RECORDS AND REFERENCE. THE SUBMITTED DRAWINGS AND CALCULATIONS SHALL BE SIGNED AND SEALED IN ACCORDANCE WITH THE LAWS RELATING TO ARCHITECTS AND PROFESSIONAL ENGINEERS (CHAPTER 327, RSMO.), AND SHALL INCLUDE A TITLE BLOCK OR SUMMARY SHEET WHICH LISTS AND CERTIFIES THAT THE PRODUCT MEETS ALL OF THE SPECIFIED DESIGN CRITERIA.

LEGEND: T - TOP MOUNT, S - SIDE MOUNT, C - SPANWIRE MOUNT, B - MAST ARM MOUNT

MO ROUTE K AT MO ROUTE N INTERSECTION



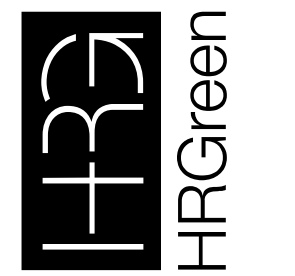
DATE PREPARED: 9/19/2024, ROUTE: K/N, STATE: MO, DISTRICT: SL, SHEET NO.: 41, COUNTY: ST. CHARLES, JOB NO.: J6S3668, CONTRACT ID., PROJECT NO., BRIDGE NO.

DESCRIPTION and DATE columns for the project summary.

CITY OF O'FALLON, MO, 100 NORTH MAIN STREET, O'FALLON, MO 63366, 636-240-2000



HR GREEN, INC., 520 MARYVILLE CENTRE DRIVE, ST. LOUIS, MISSOURI 63141, PHONE: 1-636-751-0990, CORPORATE LICENSE #2002006608



IF A SEAL IS PRESENT ON THIS SHEET IT HAS BEEN ELECTRONICALLY SEALED AND DATED.