

ADDENDUM NO. 1

ISSUED BY: Howe Company LLC
804 E. Patton Street
Macon, MO 63552

Avon
10-10-2024

DATE: October 10, 2024

FOR: MACON COUNTY BRIDGE 38500062
BRO-R061(33)

The attached revisions hereby supersede any and all data with which they may conflict as indicated on the Drawings, Specifications and related documents issued in the original set. Each trade is responsible for changes in its work caused by changes in the work of other trades. This addendum is a part of and shall be attached to the original set of plans and specifications for the work.

THIS ADDENDUM SHALL BECOME A PART OF THE SPECIFICATIONS NOTED ABOVE. RECEIPT OF THIS ADDENDUM SHOULD BE ACKNOWLEDGED ON THE BID FORM.

Notice to Contractors. The first page of the Notice to Contractors has been revised to remove inconsistencies. A new first page of the Notice to Contractors is issued with this addendum to replace the original. There is no change in the contract time or completion date.

Updated Plan Sheets. Plan sheets 15, 16, 17, 19, and 20 have been updated to remove inconsistencies. A new plan sheet 15, 16, 17, 19, and 20 are issued with this addendum to replace the original sheets.

There is no change in bid opening date or time.

NOTICE TO CONTRACTORS

Sealed bids, addressed to Macon County, 101 E. Washington, Suite B, Macon, MO 63552 for the proposed work will be received by Macon County until 10:00 a.m. (prevailing local time) on October 24, 2024 at the office of the Macon County Commission & Clerk at 101 E. Washington, Suite B, Macon, MO 63552, and at that time will be publicly opened. Bids should be delivered to: Macon County, 101 E. Washington, Suite B, Macon, MO 63552

(1) **PROPOSED WORK:** The proposed work, hereinafter called the work, includes:

Construction of a new 212 foot three-span, prestressed concrete NU43 I-girder bridge with steel piling (HP12x53), concrete abutments, concrete piers, SL-1 railing, traffic control, and all appurtenances.

(2) **COMPLIANCE WITH CONTRACT PROVISIONS:** The bidder, having examined and being familiar with the local conditions affecting the work, and with the contract, contract documents, including the current version of the Missouri Highways and Transportation Commission's "Missouri Standard Specifications for Highway Construction 2023, 3rd Edition – January 2024," and "Missouri Standard Plans for Highway Construction" (if applicable), their revisions, and the request for bid, including appendices, the special provisions and plans, hereby proposes to furnish all labor, materials, equipment, services, etc., required for the performance and completion of the work. All references are to the Missouri Standard Specifications for Highway Construction, as revised, unless otherwise noted.

The following documents are available on the Missouri Department of Transportation web page at www.modot.mo.gov under "Business with MoDOT" "Standards and Specifications".

General Provisions & Supplemental Specifications

Supplemental Revisions to Missouri Standard Plans
For Highway Construction (if applicable)

These supplemental bidding documents contain all current revisions to the bound printed versions and have important legal consequences. It shall be conclusively presumed that they are in the bidder's possession, and they have been reviewed and used by the bidder in the preparation of any bid submitted on this project.

Please note that within the above-listed documents, the term "Commission" shall be replaced with the term, "Macon County", and the term "Engineer" is a reference to the Engineer of Record from Howe Company, LLC. The contracting authority for this contract is Macon County

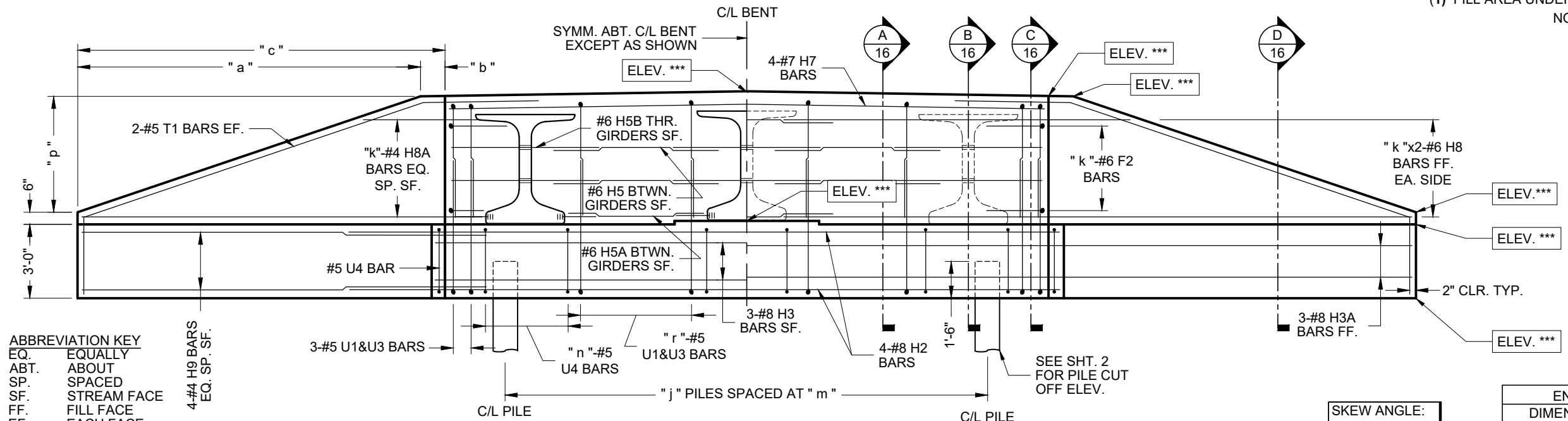
(3) **PERIOD OF PERFORMANCE:** If the bid is accepted, the bidder agrees that work shall be diligently prosecuted at such rate and in such manner as, in the judgment of the engineer, is necessary for the completion of the work within the time specified as follows in accordance with Sec 108:

Calendar Days: 180 Calendar Days after the road is closed or a Completion Date of: September 30th, 2025, whichever comes first

(1) FILL AREA UNDER GIRDER WITH JOINT FILLER

NOTE: SOME REBAR MAY BE OMITTED FROM SOME VIEWS FOR CLARITY

SEE SHEET 28 FOR ABUTMENT AND PIER ELEVATIONS



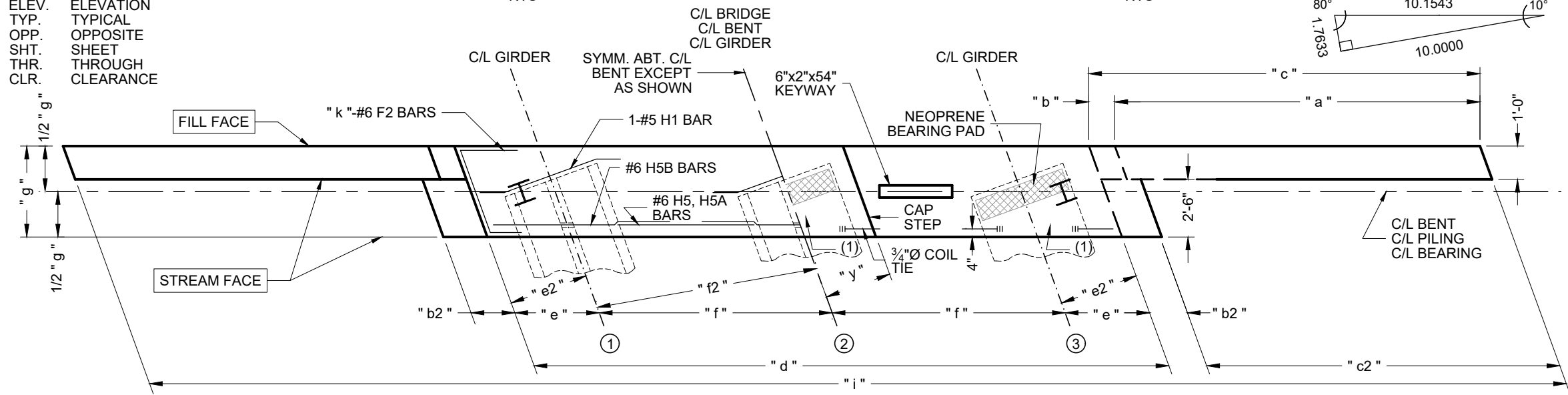
ABBREVIATION KEY
 EQ. EQUALLY
 ABT. ABOUT
 SP. SPACED
 SF. STREAM FACE
 FF. FILL FACE
 EF. EACH FACE
 C/L CENTER LINE
 SYMM. SYMMETRICAL
 ELEV. ELEVATION
 TYP. TYPICAL
 OPP. OPPOSITE
 SHT. SHEET
 THR. THROUGH
 CLR. CLEARANCE

PART ELEVATION OF ABUTMENTS (STREAM FACE)
NTS

PART ELEVATION OF ABUTMENTS (FILL FACE)
NTS

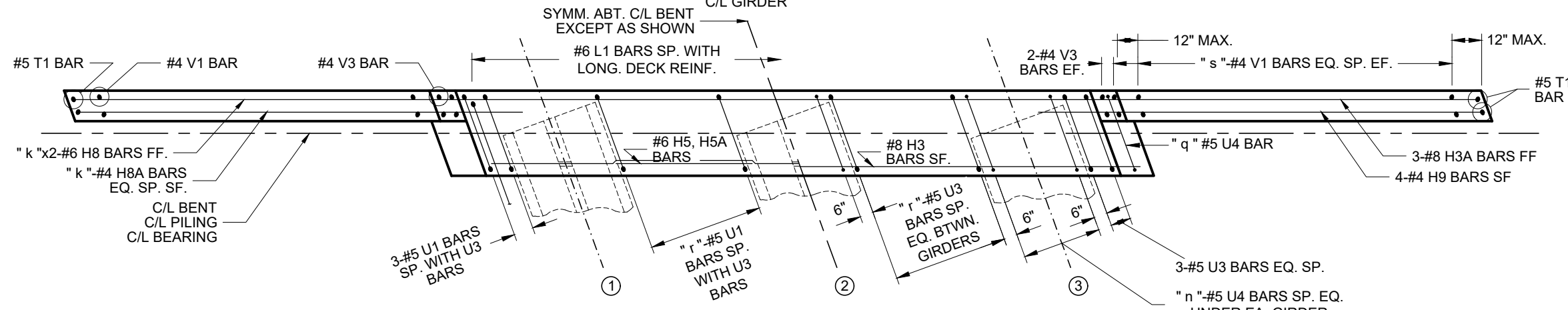
SKEW ANGLE:
10° LEFT ADV.

END BENT DIMENSIONS	
DIMENSION	BENT
"a"	9'-9 1/8"
"b"	1'-3 1/16"
"b2"	9 1/4"
"c"	10'-9 1/4"
"c2"	10'-0"
"d"	24'-10 9/16"
"d2"	24'-6"
"e"	26'-5 1/8"
"e2"	3'-3 5/8"
"f"	3'-3"
"f2"	9'-1 11/16"
"g"	9'-0"
"g2"	3'-6"
"h"	1'-7 1/16"
"i"	46'-5 1/8"
"j"	4
"k"	4
"m"	7'-9"
"n"	8
"p"	3'-1 5/8"
"q"	1
"r"	8
"s"	9
"y"	2'-2"



HALF PLAN OF DIAPHRAGM
NTS

HALF PLAN OF BEAM
NTS



HALF PLAN OF DIAPHRAGM
NTS

HALF PLAN OF BEAM
NTS

REVISED 10-10-24

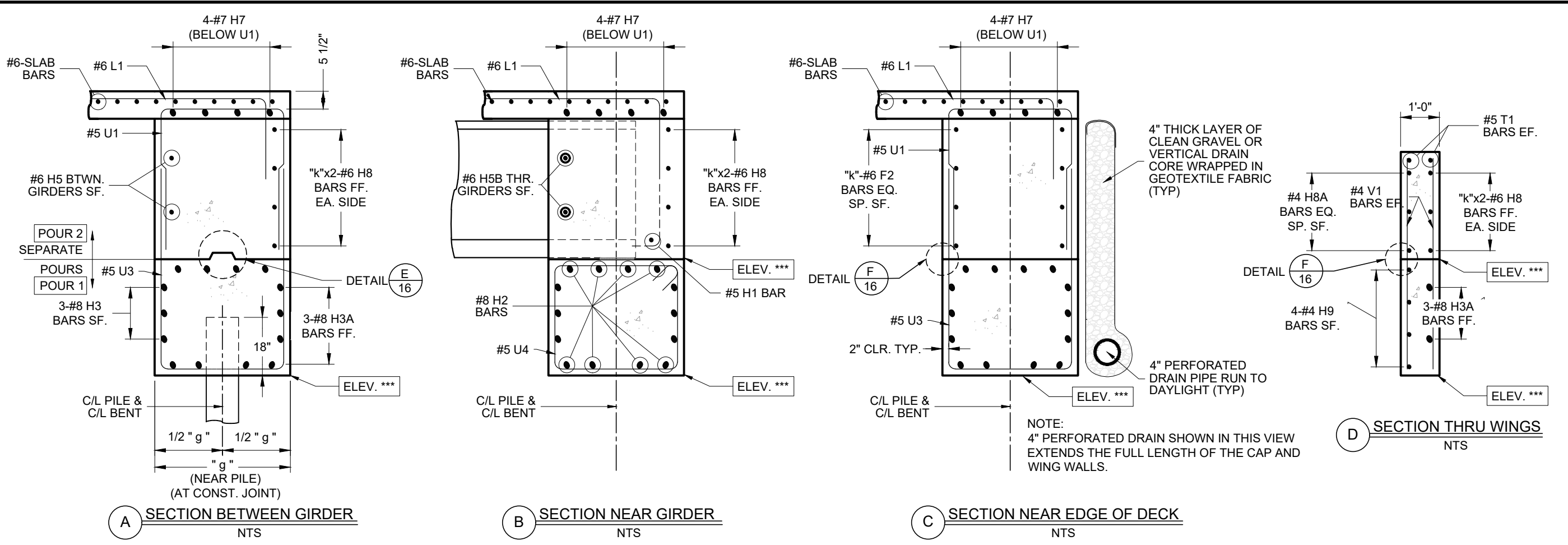


Sheet References	Date	Description	No.
10-10-24	AL		Appr.

Howe Company LLC
 MISSOURI STATE CERTIFICATE OF AUTHORITY
 ENGINEERING #E-2014014893
 SURVEYING #LS-2014016235

END BENT DETAILS SHEET
 OFF SYSTEM BRIDGE REPLACEMENT PROGRAM
 CART ROUTE NO. 385 - AQUA STREET
 BRIDGE NO. 38500062 PROJECT NO. BRO-R061(33)
 MACON COUNTY, MISSOURI
 HOWE COMPANY, LLC
 804 E. PATTON STREET, MACON, MO. 63552
 OFFICE: 660-395-4893

DATE:	JUNE 2024
DESIGNED BY:	A. LUKEFAHR
DRAWN BY:	D. WITMER
REVIEWED BY:	S. HOWE
APPROVED BY:	S. HOWE
JOB NO.	23H3530

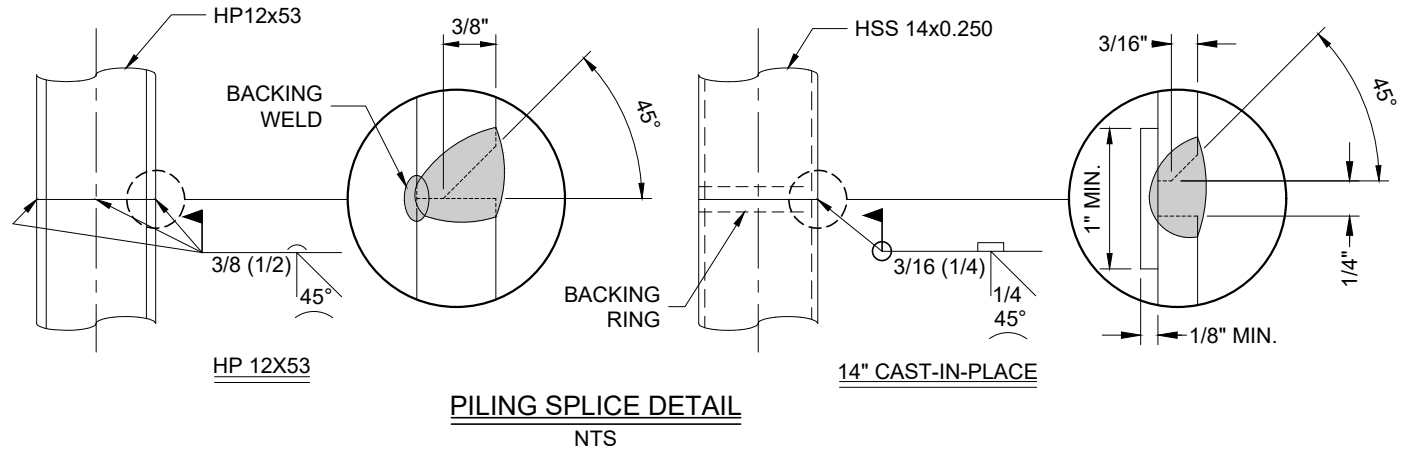


A SECTION BETWEEN GIRDER
NTS

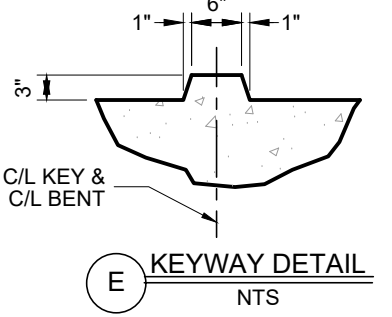
B SECTION NEAR GIRDER
NTS

C SECTION NEAR EDGE OF DECK
NTS

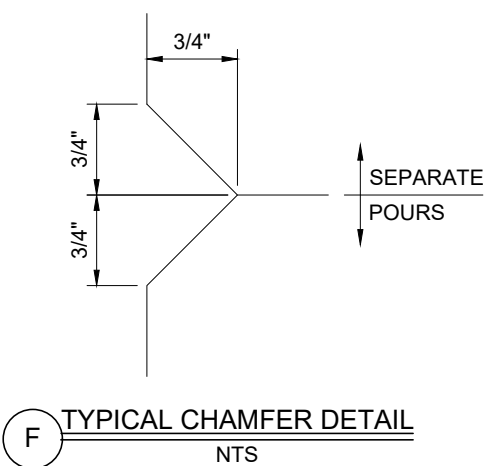
D SECTION THRU WINGS
NTS



PILING SPLICE DETAIL
NTS



E KEYWAY DETAIL
NTS



F TYPICAL CHAMFER DETAIL
NTS

SEC-θ	SKEW ANGLE = θ
1.01543	10° L-ADV.

END BENT DIMENSIONS	
DIMENSION	BENT
"a"	9'-9 1/8"
"b"	1'-3/16"
"b2"	9 1/4"
"c"	10'-9 1/4"
"c2"	10'-0"
"d"	24'-10 9/16"
"d2"	24'-6"
"d3"	26'-5 1/8"
"e"	3'-3 5/8"
"e2"	3'-3"
"f"	9'-1 11/16"
"f2"	9'-0"
"g"	3'-6"
"h"	1'-7 1/16"
"i"	46'-5 1/8"
"j"	4
"k"	4
"m"	7'-9"
"n"	8
"p"	3'-1 5/8"
"q"	1
"r"	8
"s"	9
"y"	2'-2"

SEE SHEET 28 FOR ABUTMENT AND PIER ELEVATIONS

3 - NU-43
(3'-7 5/16")

PLAIN NEOPRENE BEARING PAD SIZE
("L" x "W" x THK.)
36" x 10 1/2" x 1/2"

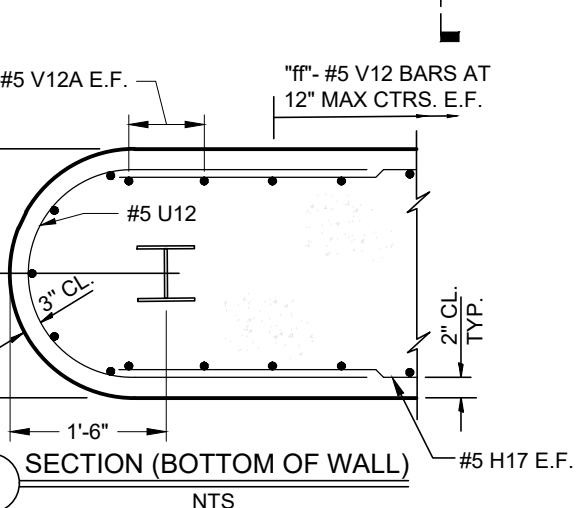
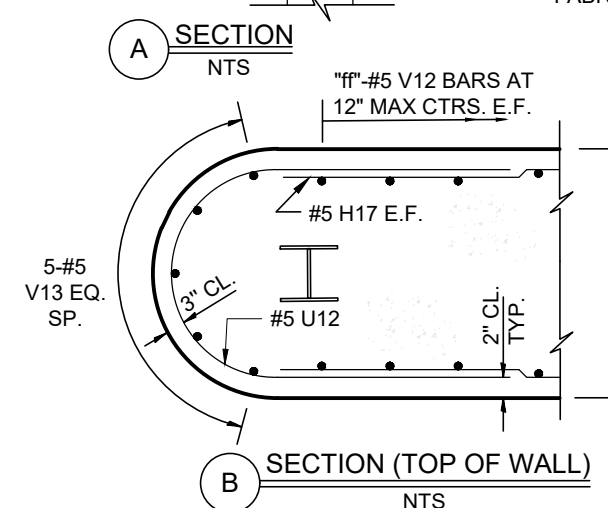
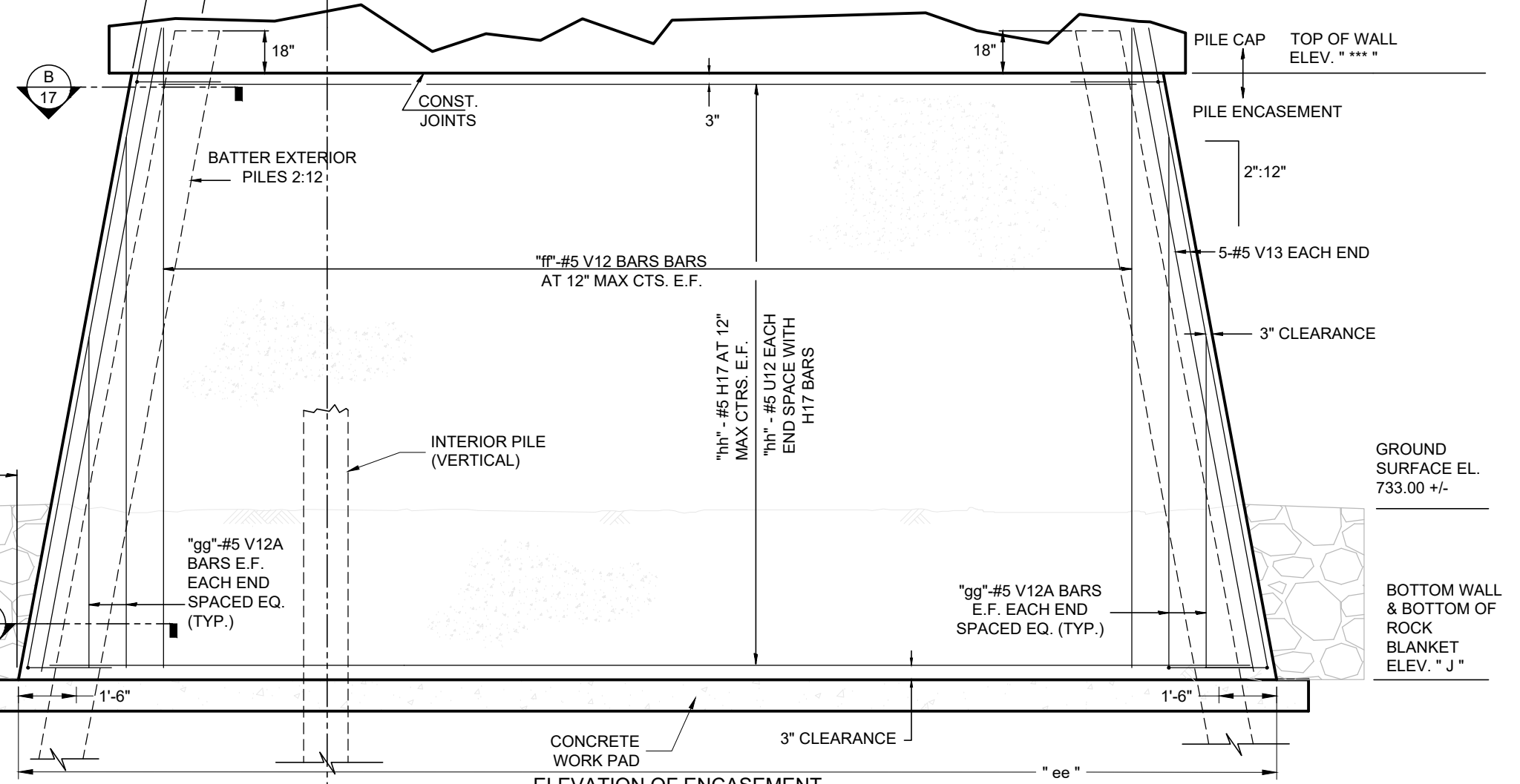
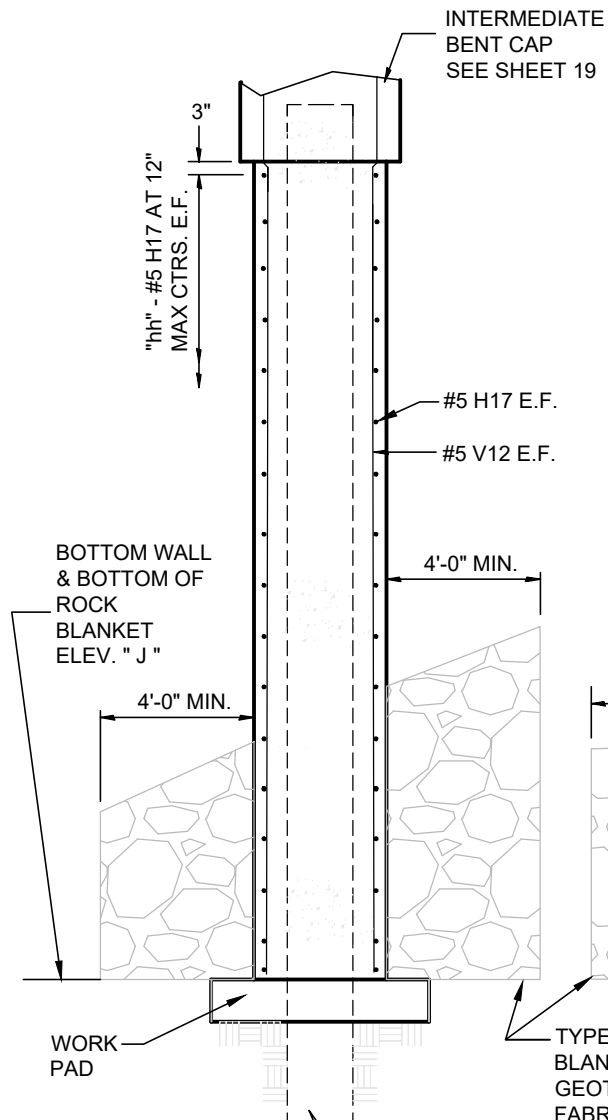
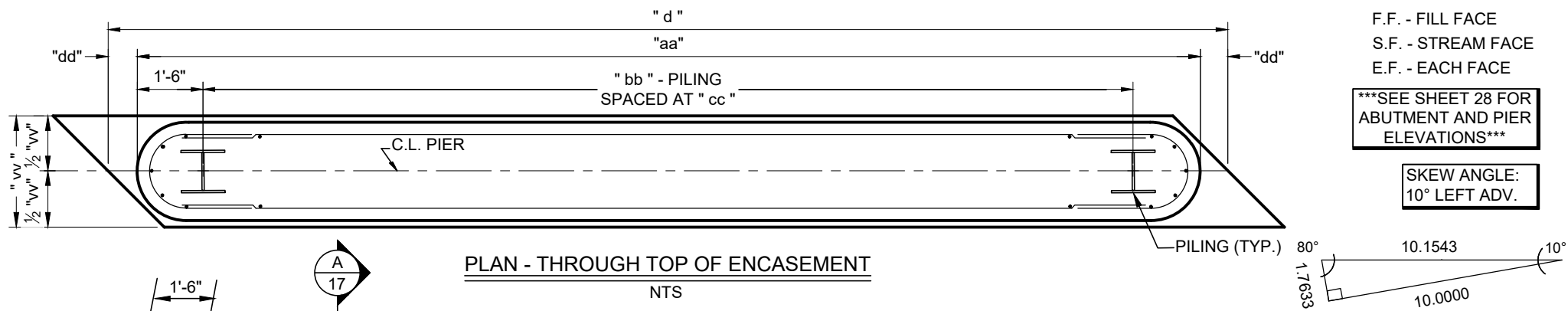
REVISED 10-10-24



NOTES:
DRAWINGS ARE NOT TO SCALE. FOLLOW DIMENSIONS.
ALL CONCRETE IN POUR 1 (PILE CAP & LOWER WINGS) SHALL BE SUBSTRUCTURE CONCRETE, CLASS B-1 WITH AIR ENTRAINMENT. CLASS B-2 OR MB-2 CONCRETE MAY BE PROVIDED IN LIEU OF CLASS B-1.
ALL CONCRETE IN POUR 2 (BRIDGE DECK, C.I.P. DIAPHRAGM, AND UPPER WINGS) SHALL BE SUPER STRUCTURE CONCRETE, CLASS B-2 OR MB-2 WITH AIR ENTRAINMENT.
ALL U BARS SHALL BE PLACED PARALLEL TO THE C/L OF ROADWAY.
BOTTOM LEG OF U BARS MAY BE CUT WHEN NECESSARY TO CLEAR PILES. CUT LOWER LEG AT THE MID POINT AND ROTATE LEGS TO EITHER SIDE OF THE PILING.
POUR STEPS MONOLITHICALLY WITH CAP.
POUR UPPER WING WALLS MONOLITHICALLY WITH THE END DIAPHRAGMS AND BRIDGE DECK.
ALL EXPOSED CONSTRUCTION JOINTS SHALL USE CHAMFERED EDGES AS SHOWN IN DETAIL E.
ALL EXPOSED EDGES SHALL USE 3/4" CHAMFERS.
ALL CONCRETE ABOVE THE BOTTOM OF GIRDER ELEVATION SHALL BE CONSIDERED SUPERSTRUCTURE CONCRETE.
SOME REBAR MAY BE OMITTED FROM SOME VIEWS FOR CLARITY, SECTIONS ARE TAKEN NORMAL TO CENTERLINE OF BENT.
SEE BILL OF REINFORCING STEEL FOR BAR DETAILS.

10-10-24	AL
1	Sheet References
MISSOURI STATE CERTIFICATE OF AUTHORITY ENGINEERING #E-201404993 SURVEYING #LS-2014016285	
END BENT DETAILS SHEET OFF SYSTEM BRIDGE REPLACEMENT PROGRAM CART ROUTE NO. 385 - AQUA STREET BRIDGE NO. 38500062 PROJECT NO. BRO-R061(33) MACON COUNTY, MISSOURI HOWE COMPANY, LLC 804 E. PATTON STREET, MACON, MO. 63552 OFFICE: 660-395-4693	
DATE:	JUNE 2024
DESIGNED BY:	A. LUKEFAHR
DRAWN BY:	D. WITMER
REVIEWED BY:	S. HOWE
APPROVED BY:	S. HOWE
JOB NO.	23H3530
16 SHEET 16 OF 36	

NOTES:
 1 - ALL CAST IN PLACE SHALL BE CONSIDERED SUBSTRUCTURE CONCRETE, CLASS B-1 OR MB2. (WITH AIR ENTRAINMENT)
 2 - THE CONTRACTOR MAY PLACE THE ENCASEMENT CONCRETE IN TWO (2) SEPARATE POURS. IF SEPARATE POURS ARE USED THE CONTRACTOR SHALL PROVIDE MINIMUM 24" FIELD SPLICE ON ALL VERTICAL BARS. NO ADDITIONAL PAYMENT WILL BE MADE FOR ADDITIONAL REBAR QUANTITY TO ACCOMMODATE SEPARATE POURS.
 3 - AREAS OF OVER EXCAVATION AROUND THE PIERS SHALL BE BACKFILLED WITH TYPE 2 ROCK BLANKET ON TOP OF GEOTEXTILE FABRIC.



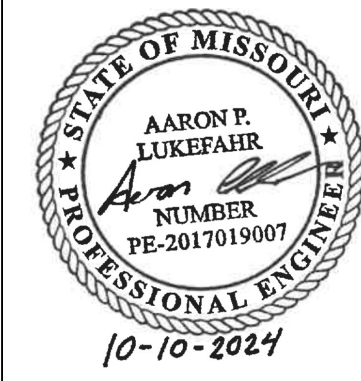
INT. BENT CAP DIMENSIONS	
DIMENSION	BENT
"aa"	23'-10 9/16"
"bb"	8
"cc"	2'-11 13/16"
"d"	24'-10 9/16"
"dd"	6"
"ff"	24
"vv"	4'-0"
1/2 "vw"	2'-0"

INT. BENT 2 CAP DIMENSIONS	
DIMENSION	BENT
"ee-2"	32'-4 3/4"
"gg-2"	4
"hh-2"	27

INT. BENT 3 CAP DIMENSIONS	
DIMENSION	BENT
"ee-3"	31'-4 3/4"
"gg-3"	4
"hh-3"	24

ELEV. "J" 728.00

REVISED 10-10-24

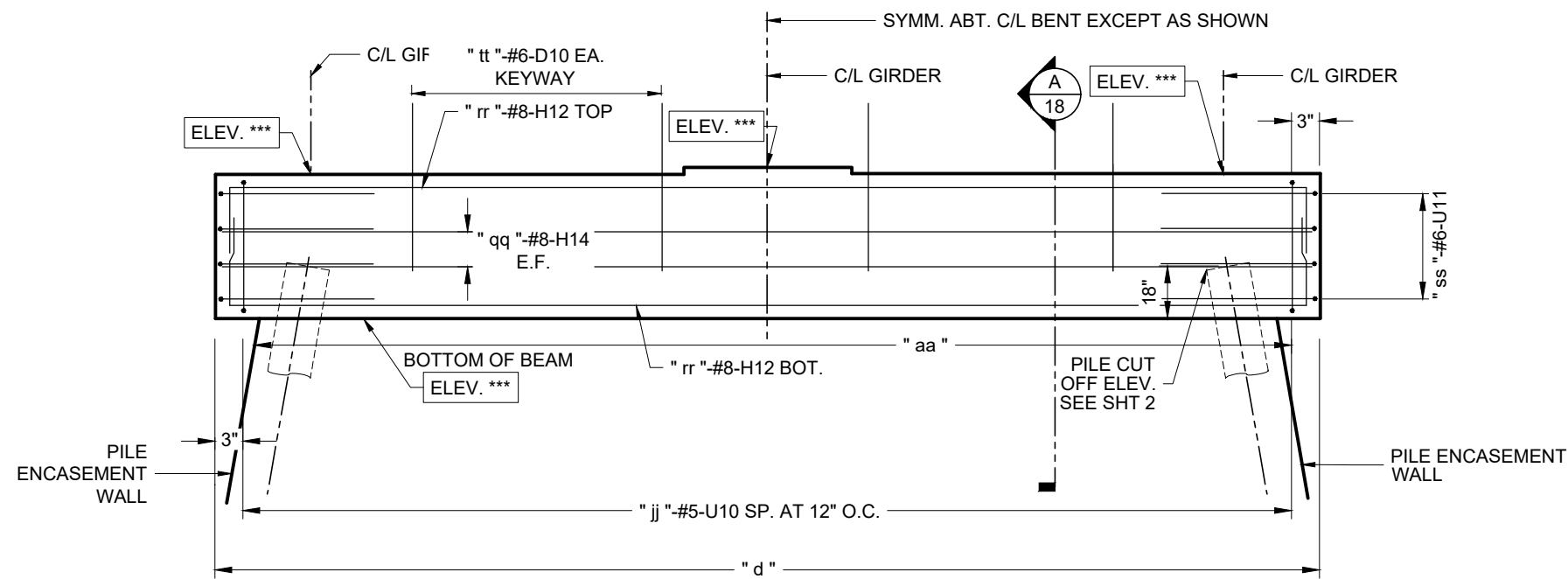


No.	Description	Date	Appr.
1	Sheet References	10-10-24	AL

Howe Company LLC
 Missouri State Certificate of Authority
 Engineering #E-2014014995
 Surveying #S-2014015235

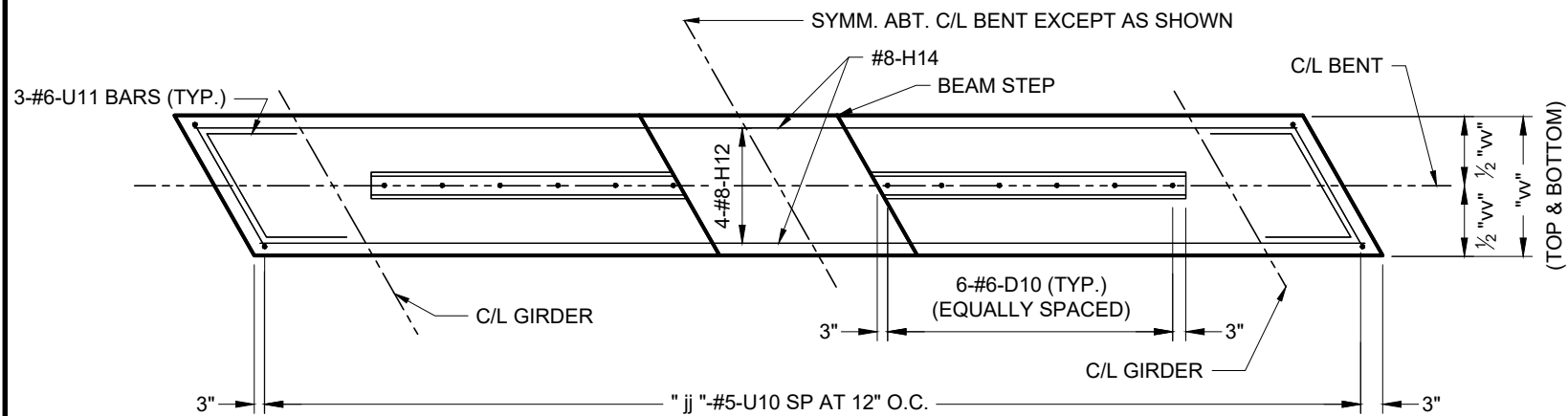
INTERMEDIATE BENT DETAILS SHEET
 OFF SYSTEM BRIDGE REPLACEMENT PROGRAM
 CART ROUTE NO. 385 - AQUA STREET
 BRIDGE NO. 38500062 PROJECT NO. BRO-R061(33)
 MACON COUNTY, MISSOURI
 HOWE COMPANY, LLC
 804 E. PATTON STREET, MACON, MO. 63552
 OFFICE: 660-395-4693

DATE:	JUNE 2024
DESIGNED BY:	A. LUKEFAHR
DRAWN BY:	D. WITMER
REVIEWED BY:	S. HOWE
APPROVED BY:	S. HOWE
JOB NO.	23H3530
17	
SHEET 17 OF 36	



ELEVATION - INTERMEDIATE BENT CAP (ALONG C/L PIER)

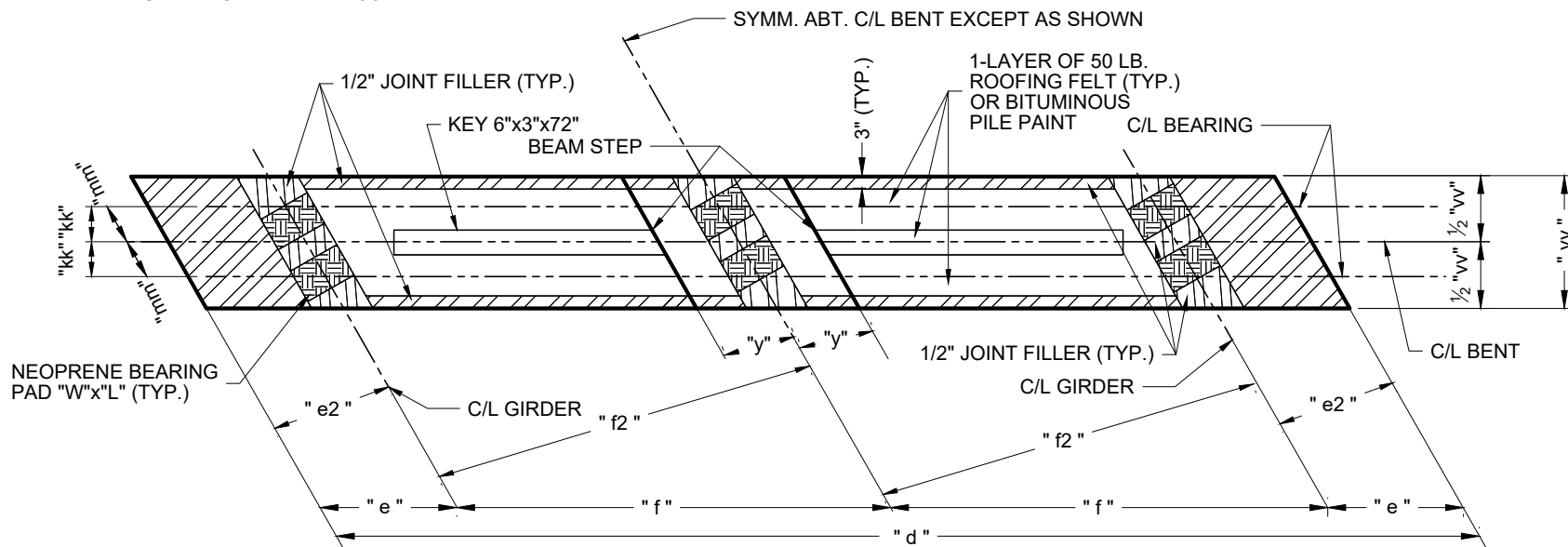
NTS



PLAN - INTERMEDIATE BENT CAP

NTS

** FILL AREA UNDER GIRDER WITH JOINT FILLER.

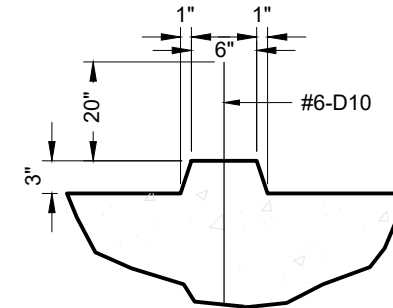


PLAN - TOP OF INTERMEDIATE BENT CAP

NTS

INT. BENT CAP DIMENSIONS	
DIMENSION	BENT
" d "	24'-10 9/16"
" d2 "	24'-6"
" e "	3'-3 5/8"
" e2 "	3'-3"
" f "	9'-1 11/16"
" f2 "	9'-0"
y	2'-2"
" aa "	23'-10 9/16"
" dd "	6"
" jj "	26
" kk "	9 1/2"
" mm "	9 3/8"
" qq "	3
" rr "	6
" ss "	4
" tt "	7
" vv "	4'-0"
1/2 " vv "	2'-0"

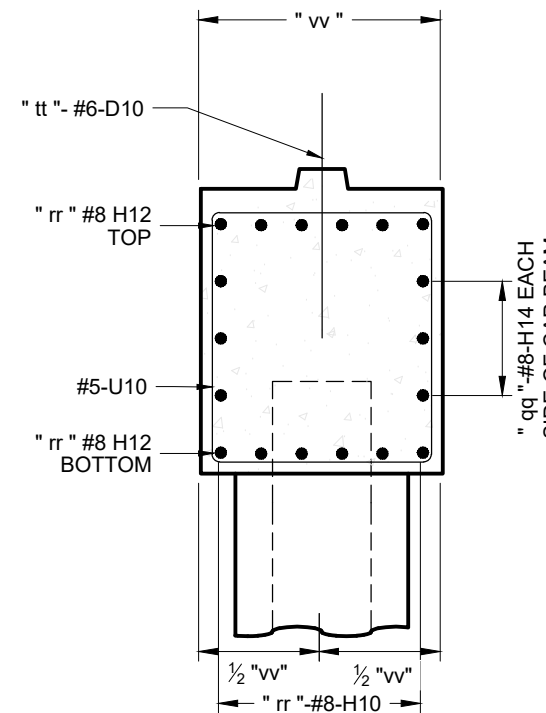
SEE SHEET 28 FOR ABUTMENT AND PIER ELEVATIONS



SECTION THRU KEY

NTS

3 - NU-43	
(3'-7 5/16")	
SEC-φ	SKREW ANGLE = φ
1.01543	10° L-ADV.



SECTION THRU CAP BEAM

NTS

REVISED 10-10-24



10-10-2024

No.	Description	Date	Appr.
1	Sheet References	10-10-24	AL

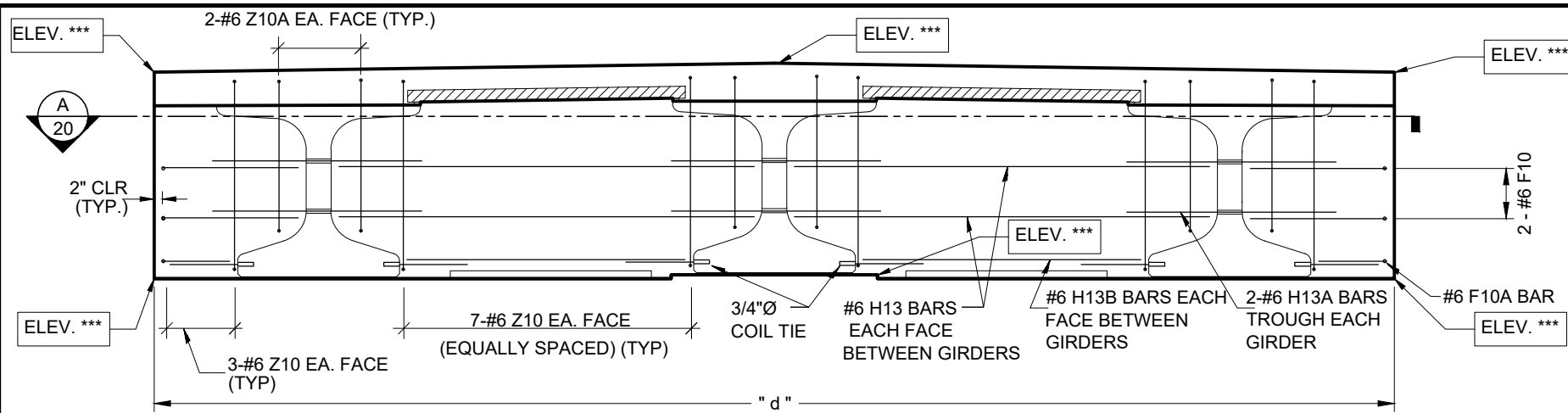
Howe Company LLC
 Missouri State Certificate of Authority
 Engineering #E-2014014993
 Surveying #S-2014015235

INTERMEDIATE BENT DETAILS SHEET
 OFF SYSTEM BRIDGE REPLACEMENT PROGRAM
 CART ROUTE NO. 385 - AQUA STREET
 BRIDGE NO. 38500062 PROJECT NO. BRO-R061(33)
 MACON COUNTY, MISSOURI
 HOWE COMPANY, LLC
 804 E. PATTON STREET, MACON, MO. 63552
 OFFICE: 660-395-4693

DATE:	JUNE 2024
DESIGNED BY:	A. LUKEFAHR
DRAWN BY:	D. WITMER
REVIEWED BY:	S. HOWE
APPROVED BY:	S. HOWE

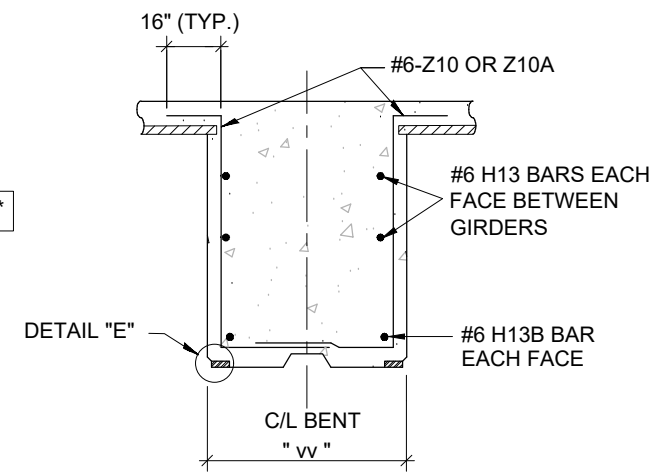
JOB NO. 23H3530

19



PROFILE VIEW INTERMEDIATE BENT DIAPHRAGM (ALONG C/L PIER)

NTS

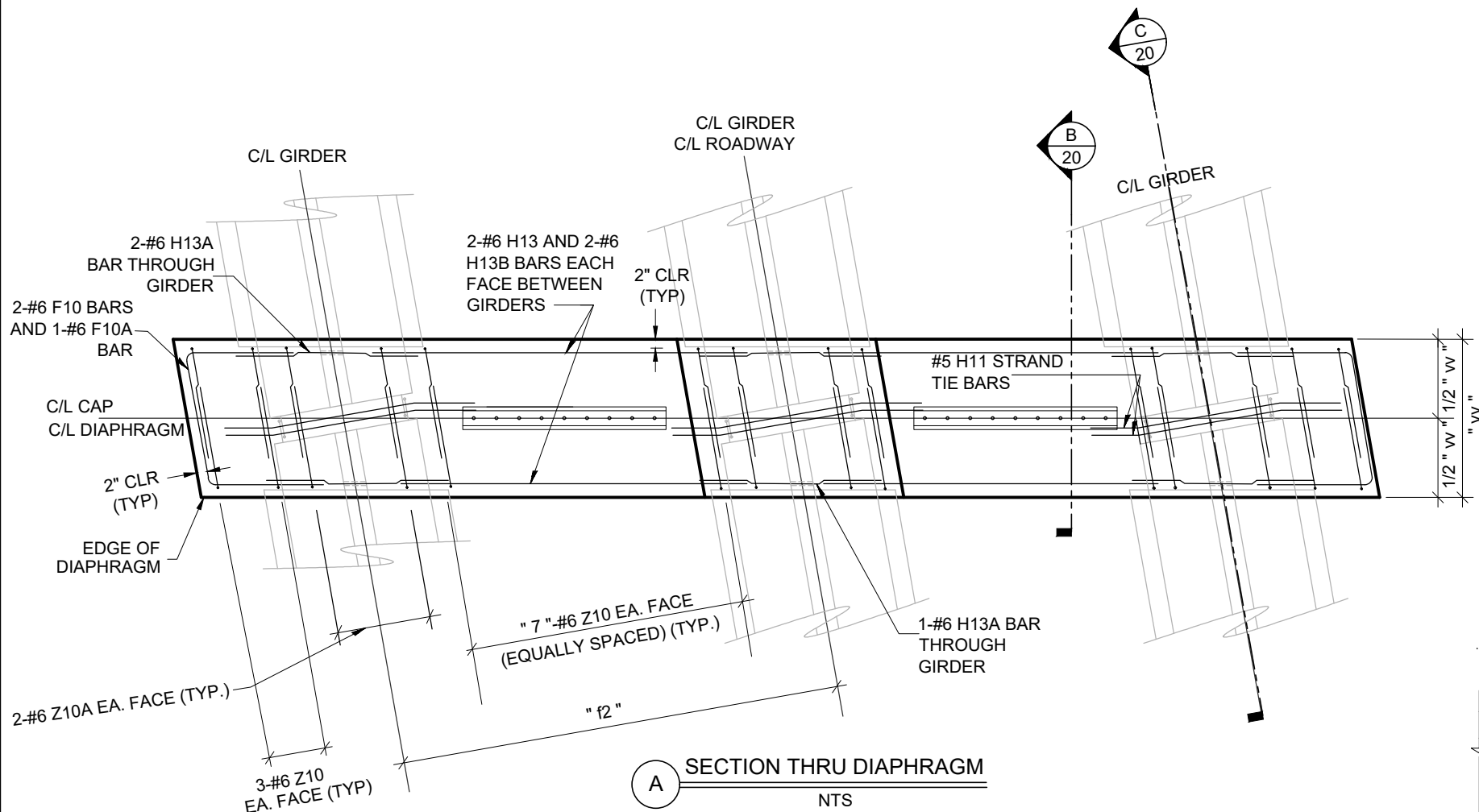


SECTION THRU DIAPHRAGM

NTS

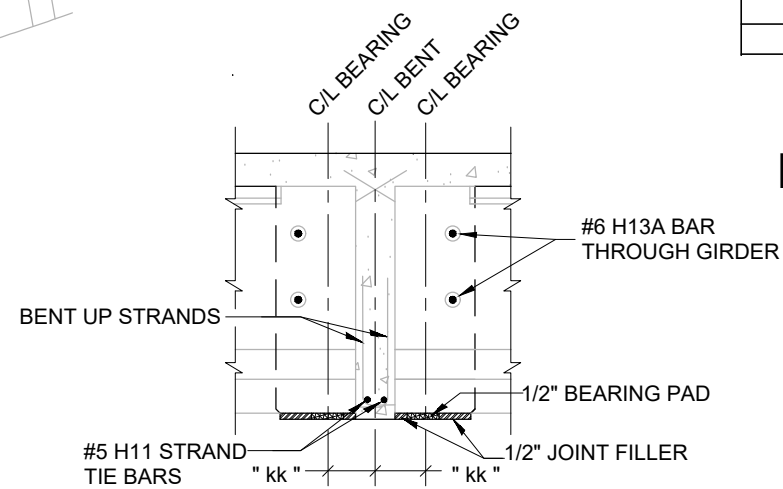
SEC- ϕ	SKEW ANGLE = ϕ
1.01543	10° L-ADV.

INT. BENT CAP DIMENSIONS	
DIMENSION	BENT
" d "	24'-10 9/16"
" d2 "	24'-6"
" e "	3'-3 5/8"
" e2 "	3'-3"
" f "	9'-1 11/16"
" f2 "	9'-0"
y "	2'-2"
" aa "	23'-10 9/16"
" dd "	6"
" jj "	26
" kk "	9 1/2"
" mm "	9 3/8"
" qq "	3
" rr "	6
" ss "	4
" tt "	7
" vv "	4'-0"
1/2 " vv "	2'-0"



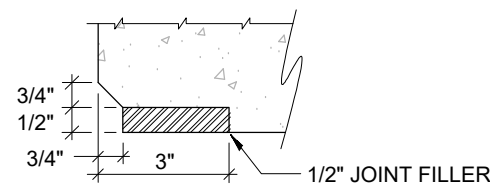
SECTION THRU DIAPHRAGM

NTS



MEASURED ALONG C/L OF GIRDER

NTS



JOINT FILLER

NTS

SEE SHEET 28 FOR ABUTMENT AND PIER ELEVATIONS



INTERMEDIATE BENT DIAPHRAGM DETAILS SHEET
 OFF SYSTEM BRIDGE REPLACEMENT PROGRAM
 CART ROUTE NO. 385 - AQUA STREET
 BRIDGE NO. 38500062 PROJECT NO. BRO-R061(33)
 MACON COUNTY, MISSOURI
 HOWE COMPANY, LLC
 804 E. PATTON STREET, MACON, MO. 63552
 OFFICE: 660-395-4693

REVISED 10-10-24



DATE: JUNE 2024
 DESIGNED BY: A. LUKEFAHR
 DRAWN BY: D. WITMER
 REVIEWED BY: S. HOWE
 APPROVED BY: S. HOWE

JOB NO. 23H3530

20

No.	Description	Date	Appr.
1	Sheet References	10-10-24	AL