



# U.S. ROUTE 54 BRIDGE REHABILITATION PROJECT

over U.S. Route 50 and McCarty Street



## WHAT

Bridge rehabilitations to extend the life of two vital overpasses in Jefferson City.



## WHERE

0.6 miles between just south of the Missouri River and Missouri Boulevard.



## WHEN

Traffic will be shifted for only 90 days - total. Start date to be determined.



## TRAFFIC IMPACT

U.S. Route 54 narrowed to a single lane of traffic in each direction. Some ramps will be closed.



## WORK TO BE DONE

Rehabilitation on the overpass bridges on U.S. Route 54 over U.S. Route 50 and McCarty Street includes:

- Joint repairs (pictured).
- Bridge deck repairs.
- New concrete wearing surface.

Due to the location of the joint repairs, the work cannot be performed under traffic, and will require a traffic shift to keep U.S. Route 54 open during construction.

## FREQUENTLY ASKED QUESTIONS

### Why is construction occurring now, during the summer travel season?

Much of the necessary work is temperature and weather sensitive and cannot be performed in colder months.

### Why can't you do the work at night and reopen all lanes during the day?

Because the joints in need of repair are close to the line dividing the driving and passing lanes, there is not enough clearance for the work to safely be completed with temporary single lane closures that could be removed each day.

The around-the-clock traffic shift is necessary to keep U.S. Route 54 open through Jefferson City.

### Are there alternate routes?

Yes, especially for those traveling to/from the Lake of the Ozarks region. However, those routes will vary based on the specific starting point and ending destination.

### What do you recommend for commuters to/from Jefferson City?

For those who drive this short section as part of their daily commute, avoiding peak hours and planning for extra travel time will help.

Check the Traveler Information Map at [traveler.modot.org](http://traveler.modot.org) for current and future roadwork, including ramp closures associated with this and nearby projects, that may impact your commute.



Scan to visit the project's webpage.



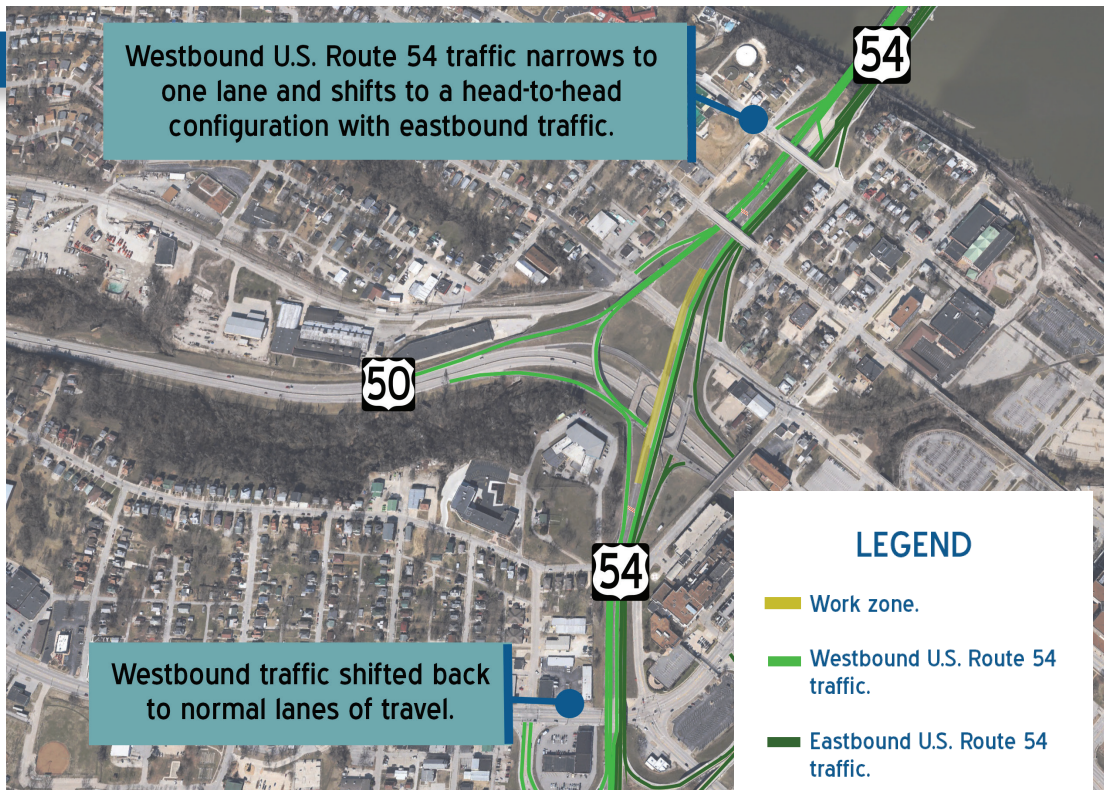


# WORK ZONE DETAILS

All work will be completed in two phases within a period of 90 calendar days.

A width restriction and speed reduction to 35 mph will be in place through the work zone.

The work zone is 0.6 miles between just south of the Missouri River and Missouri Boulevard.

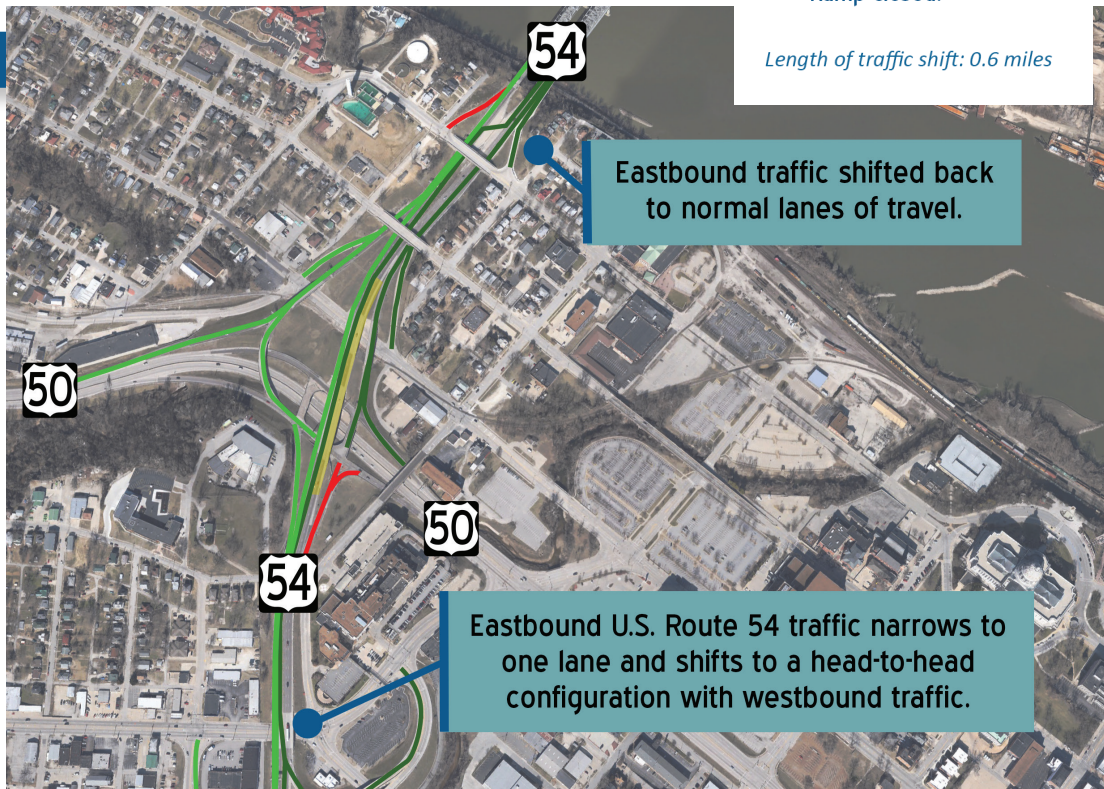


## PHASE 1

### WESTBOUND BRIDGE REHABILITATION

For the first phase of work, westbound traffic will shift to a head-to-head configuration with eastbound traffic, while the westbound bridges are repaired.

All ramps are expected to remain open during Phase 1.



## PHASE 2

### EASTBOUND BRIDGE REHABILITATION

Eastbound traffic will shift to a head-to-head configuration with westbound traffic.

During Phase 2, some ramps will be closed including:

- Westbound U.S. Route 54 to West Main Street.
- Eastbound U.S. Route 54 to U.S. Route 50.