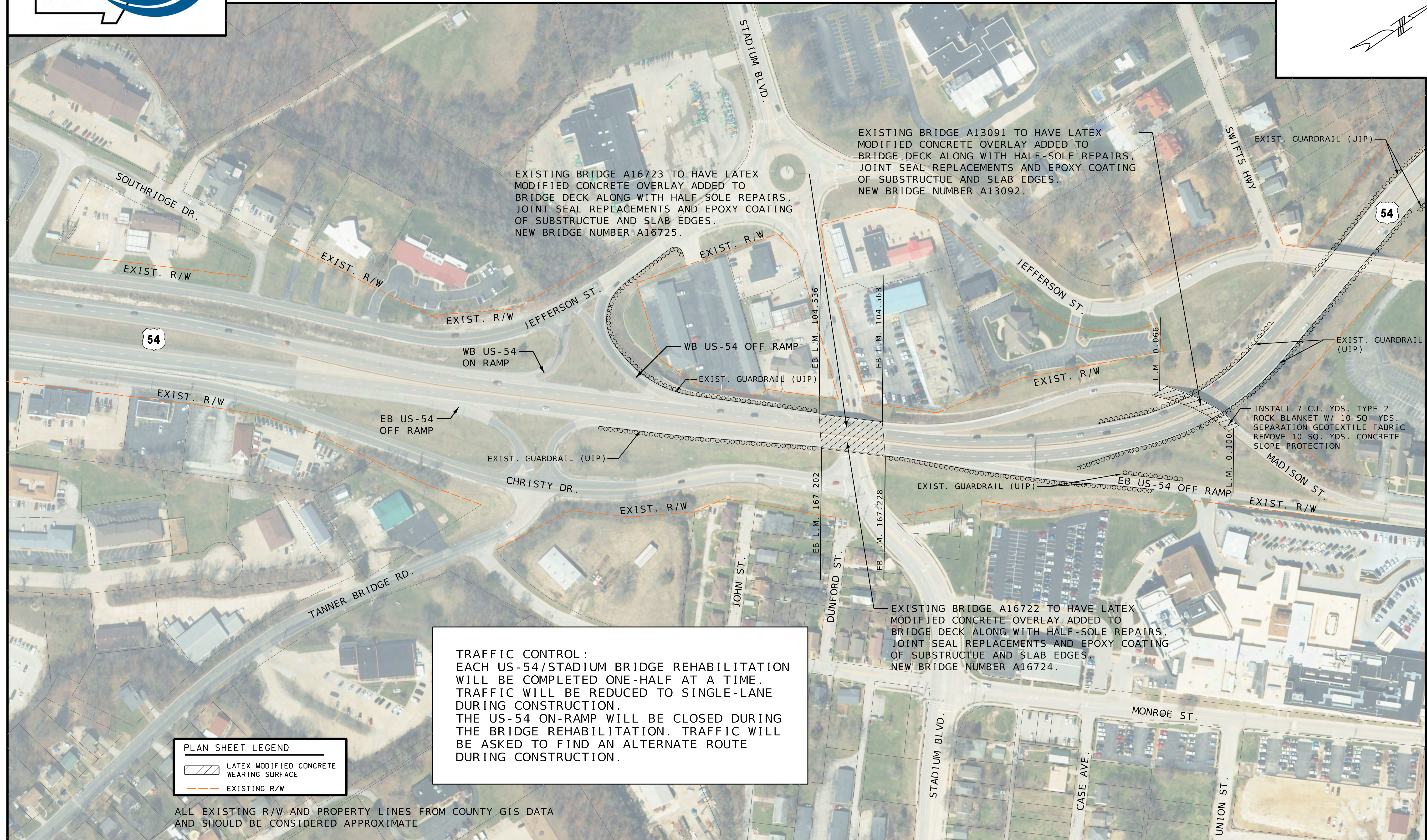
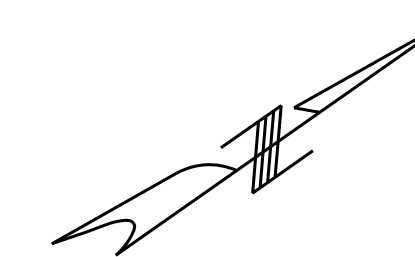
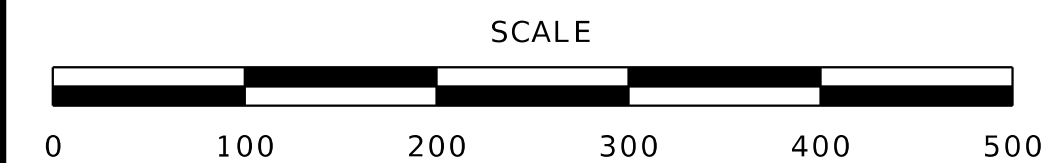




US-54 OVER STADIUM DRIVE AND US-54 MADISON STREET ON-RAMP BRIDGE REHABILITATIONS

PRELIMINARY PLANS-SUBJECT TO CHANGE



EXISTING BRIDGE A16723 TO HAVE LATEX MODIFIED CONCRETE OVERLAY ADDED TO BRIDGE DECK ALONG WITH HALF-SOLE REPAIRS, JOINT SEAL REPLACEMENTS AND EPOXY COATING OF SUBSTRUCTUE AND SLAB EDGES. NEW BRIDGE NUMBER A16725.

EXISTING BRIDGE A13091 TO HAVE LATEX MODIFIED CONCRETE OVERLAY ADDED TO BRIDGE DECK ALONG WITH HALF-SOLE REPAIRS, JOINT SEAL REPLACEMENTS AND EPOXY COATING OF SUBSTRUCTUE AND SLAB EDGES. NEW BRIDGE NUMBER A13092.

EXISTING BRIDGE A16722 TO HAVE LATEX MODIFIED CONCRETE OVERLAY ADDED TO BRIDGE DECK ALONG WITH HALF-SOLE REPAIRS, JOINT SEAL REPLACEMENTS AND EPOXY COATING OF SUBSTRUCTUE AND SLAB EDGES. NEW BRIDGE NUMBER A16724.

INSTALL 7 CU. YDS. TYPE 2 ROCK BLANKET W/ 10 SQ. YDS. SEPARATION GEOTEXTILE FABRIC REMOVE 10 SQ. YDS. CONCRETE SLOPE PROTECTION

TRAFFIC CONTROL:
EACH US-54/STADIUM BRIDGE REHABILITATION WILL BE COMPLETED ONE-HALF AT A TIME. TRAFFIC WILL BE REDUCED TO SINGLE-LANE DURING CONSTRUCTION. THE US-54 ON-RAMP WILL BE CLOSED DURING THE BRIDGE REHABILITATION. TRAFFIC WILL BE ASKED TO FIND AN ALTERNATE ROUTE DURING CONSTRUCTION.

PLAN SHEET LEGEND	
	LATEX MODIFIED CONCRETE WEARING SURFACE
	EXISTING R/W

ALL EXISTING R/W AND PROPERTY LINES FROM COUNTY GIS DATA AND SHOULD BE CONSIDERED APPROXIMATE

MATCHLINE US-54 E LOG MILE 167.500

