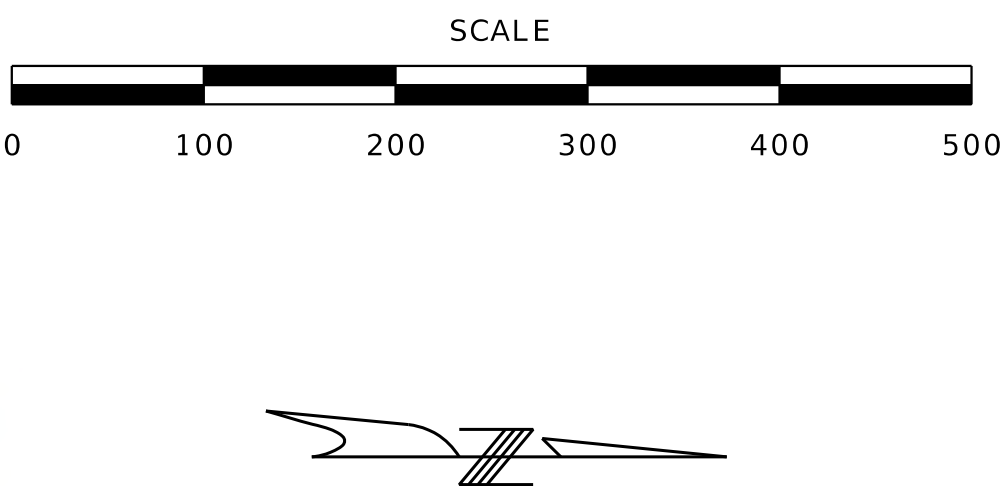


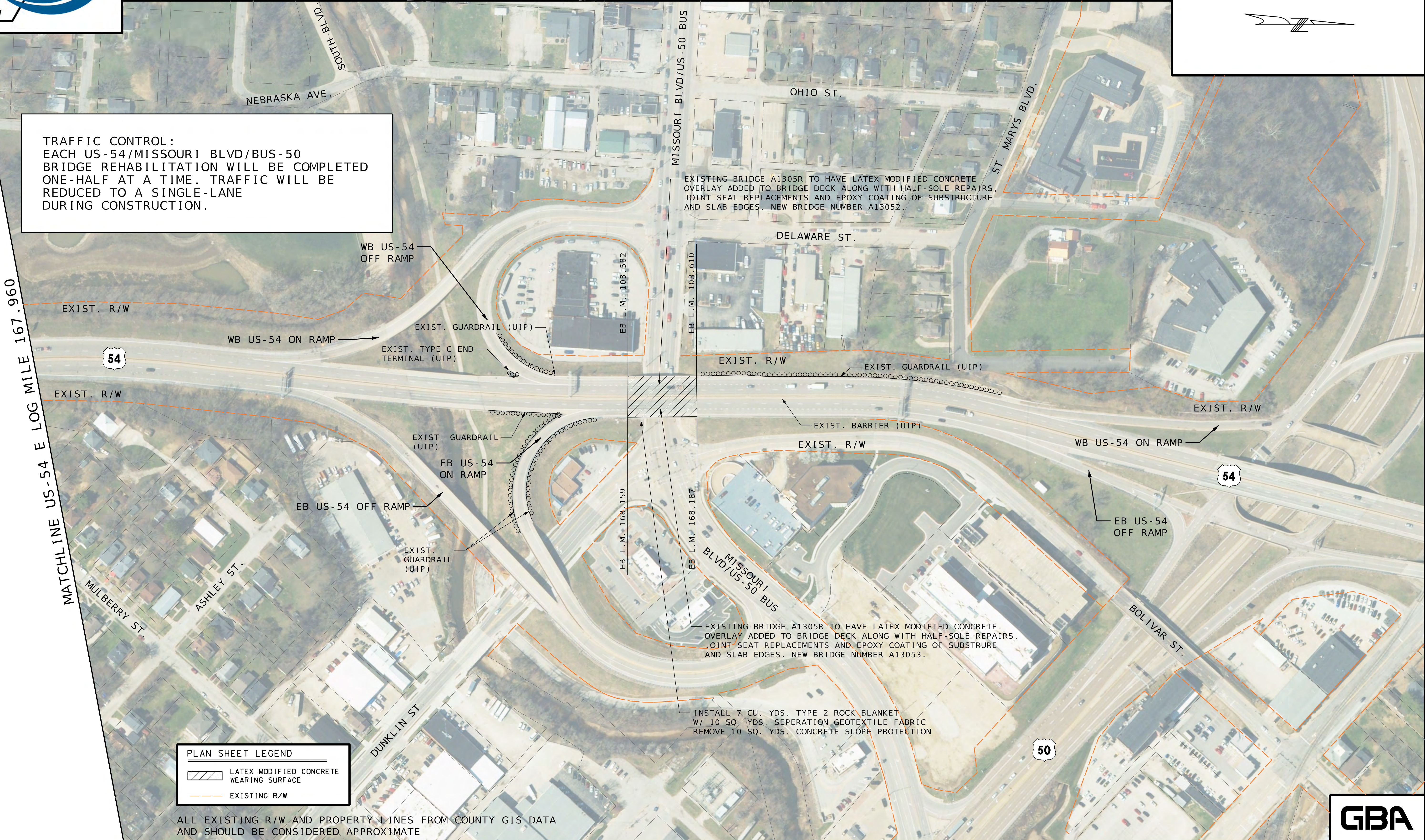


US-54 OVER MISSOURI BLVD/BUSINESS US-50

PRELIMINARY PLANS-SUBJECT TO CHANGE



TRAFFIC CONTROL:
EACH US-54/MISSOURI BLVD/BUS-50
BRIDGE REHABILITATION WILL BE COMPLETED
ONE-HALF AT A TIME. TRAFFIC WILL BE
REDUCED TO A SINGLE-LANE
DURING CONSTRUCTION.



PLAN SHEET LEGEND

- LATEX MODIFIED CONCRETE WEARING SURFACE
- EXISTING R/W

ALL EXISTING R/W AND PROPERTY LINES FROM COUNTY GIS DATA
AND SHOULD BE CONSIDERED APPROXIMATE

