

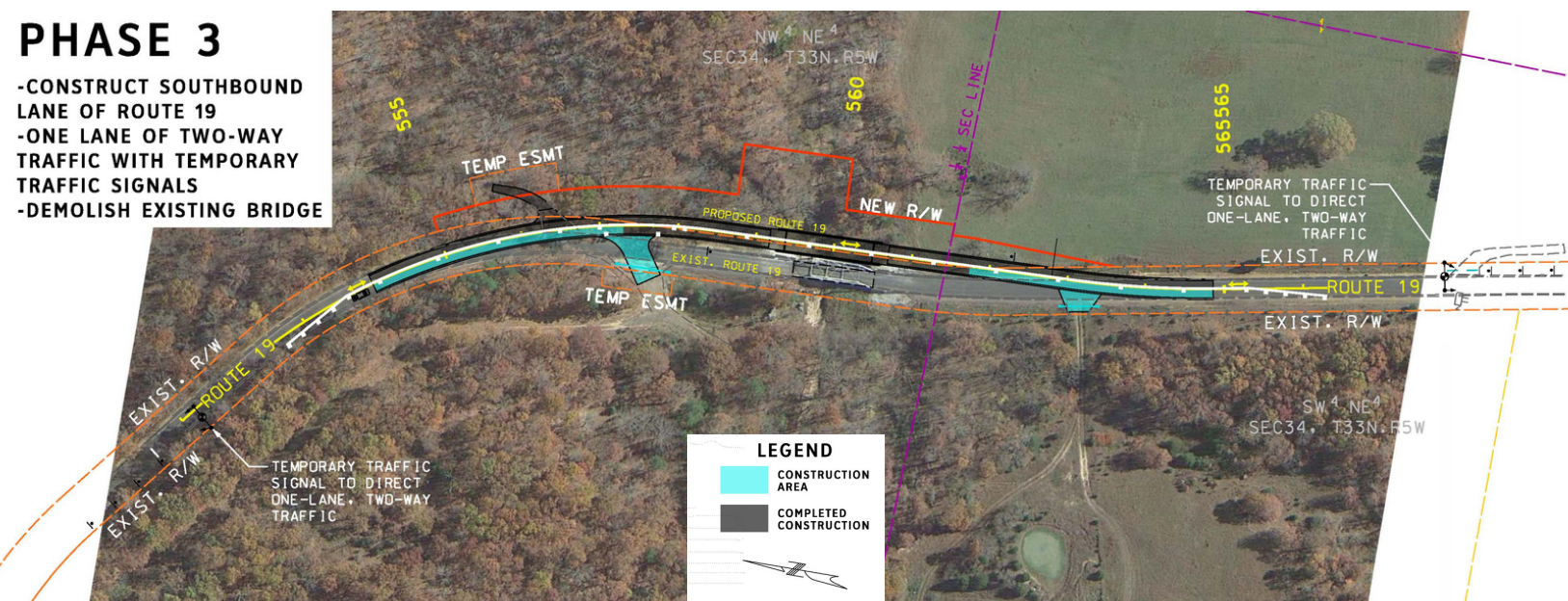


# CONSTRUCTION PHASES

## Phase 3: Temporary Traffic Signals

While the new southbound lane of Route 19 is constructed, temporary traffic signals will guide motorists through this one-lane, two-way roadway. Delays exceeding 15 minutes are not expected.

A work study estimates this phase to take approximately 39 calendar days.



Project Manager James Beattie  
 CDCR@modot.mo.gov  
[modot.org/missouri-route-19-bridge-replacement-over-standing-rock-creek-dent-county](http://modot.org/missouri-route-19-bridge-replacement-over-standing-rock-creek-dent-county)  
 888 ASK MODOT (1-888-275-6636)