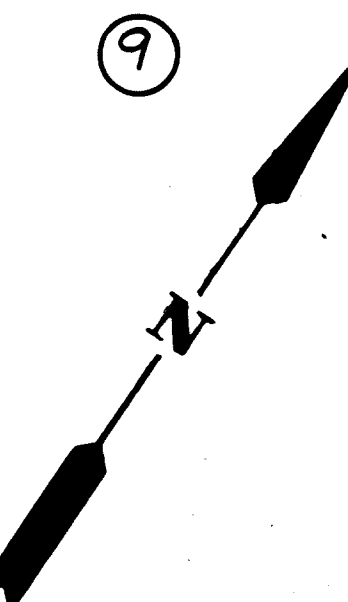


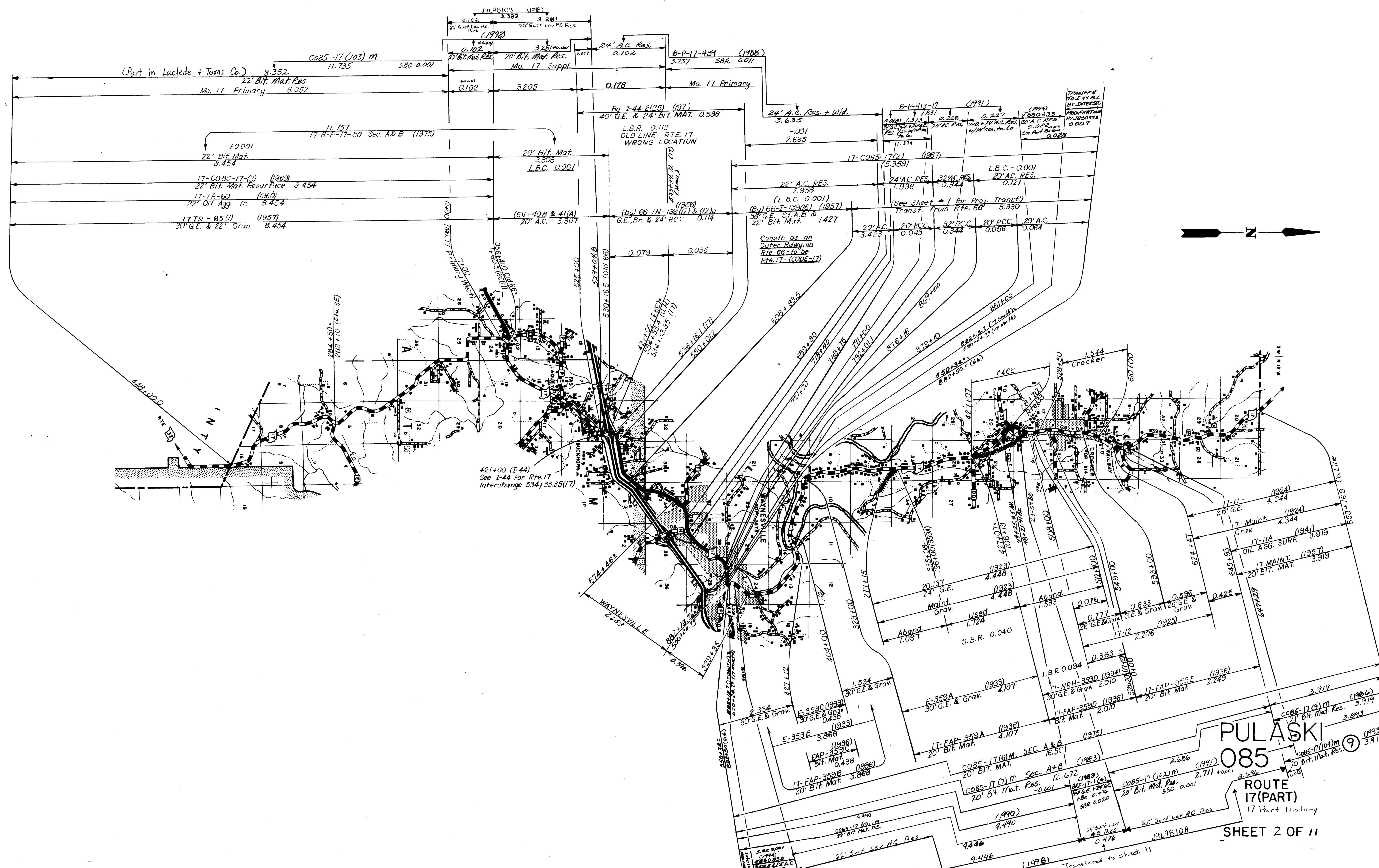
PULASKI  
085

ROUTE  
1-44

SHEET 1 OF 11



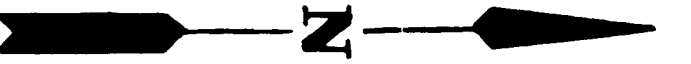




(Part in LaCade + Texas Co.)  
 22' Bit. Mat. Res.  
 Mo. 17 Primary 8.352

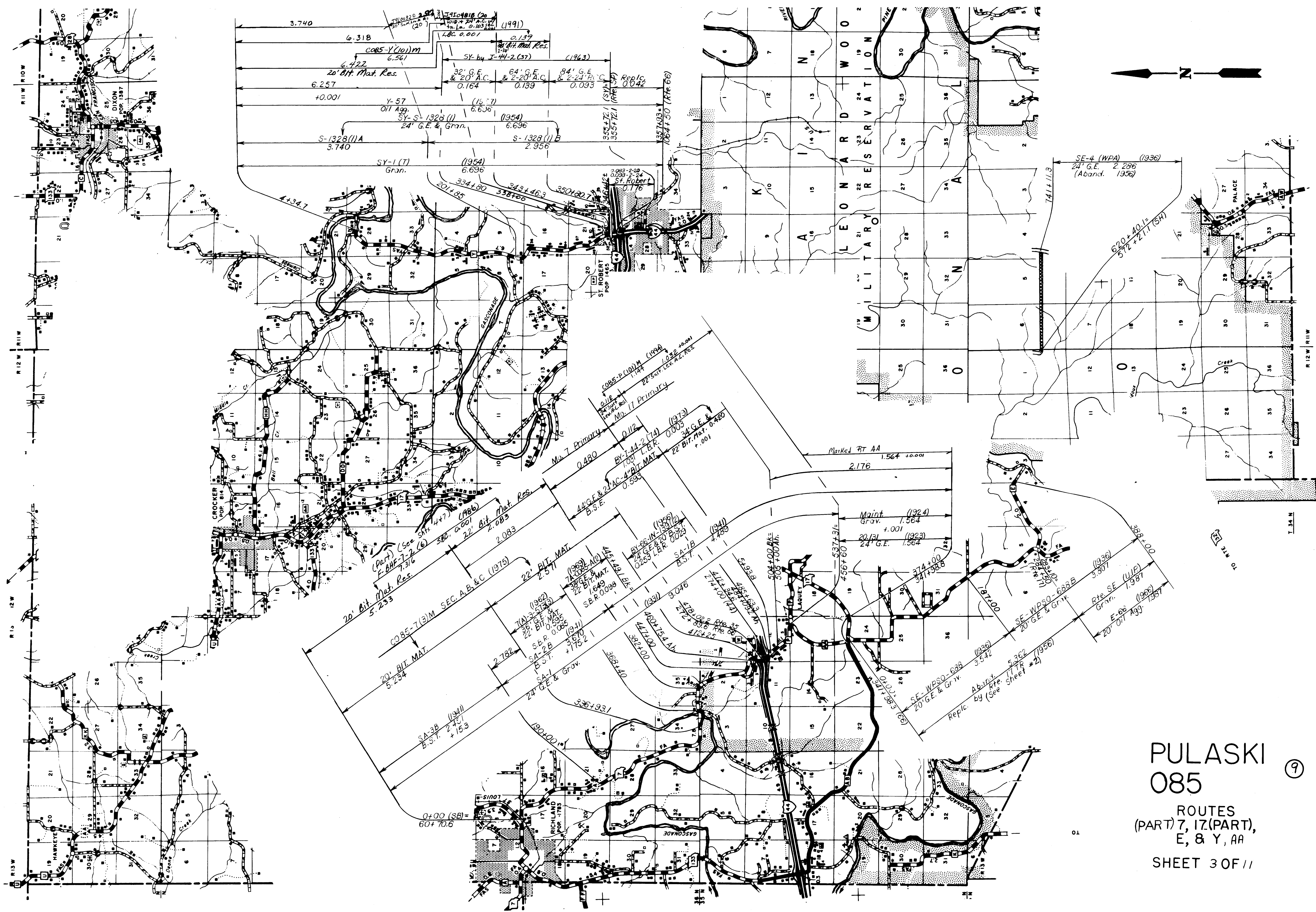
17-CO85-17(3) (1963)  
 22' Bit. Mat. Resurface 8.454  
 17-TR-60 (1960)  
 22' Oil Agg. Tr. 8.454  
 17-TR-85(1) (1957)  
 30' G.E. & 22' Gran. 8.454

421+00 (I-44)  
 See I-44 For Rte. 17  
 Interchange 534+33.35(17)



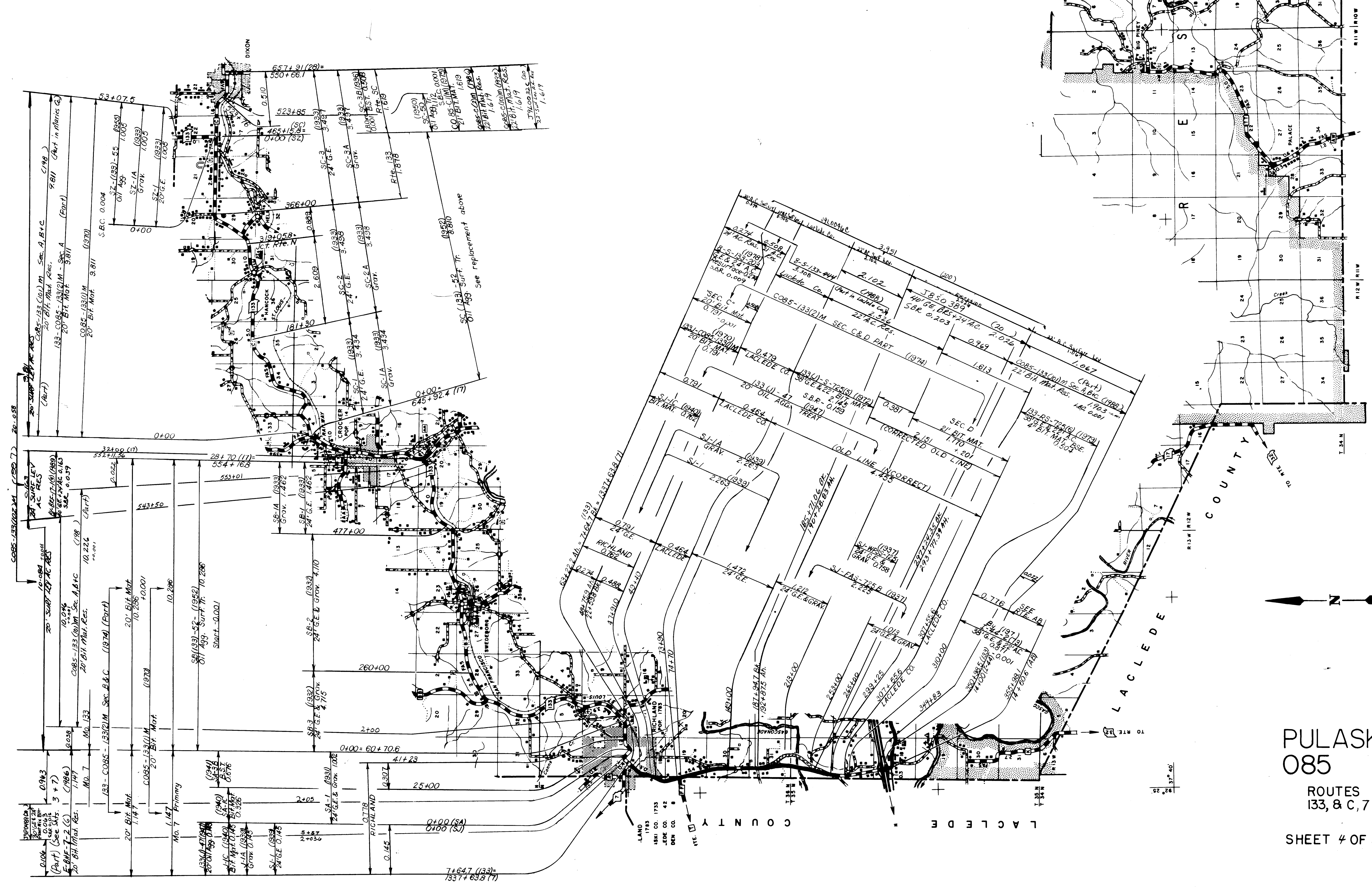
**PULASKI**  
**085**  
**ROUTE 17 (PART)**  
 17 Part History





**PULASKI 085** ⑨  
 ROUTES  
 (PART) 7, 17(PART),  
 E, & Y, AA  
 SHEET 3 OF 11





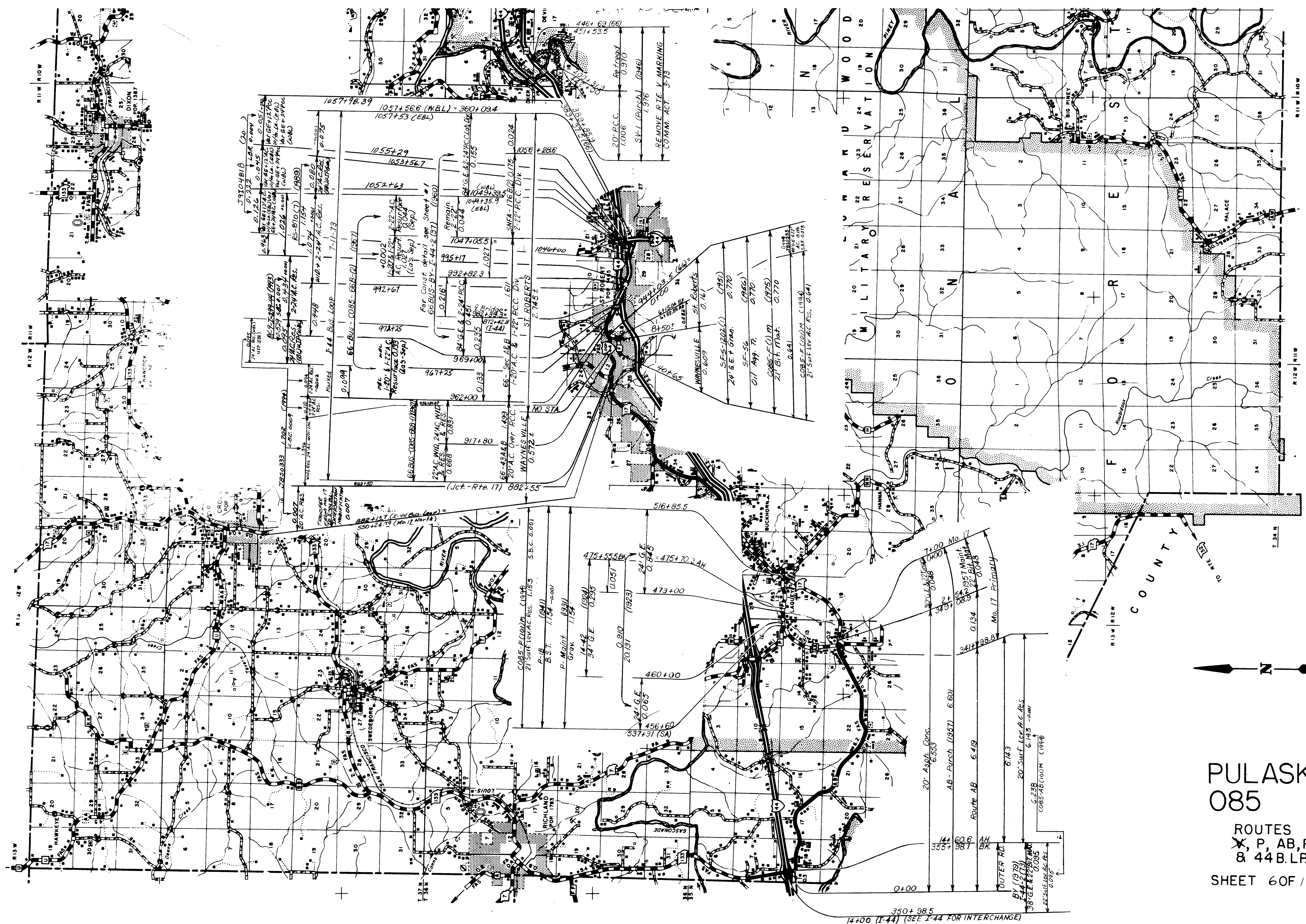
PULASKI ⑨  
085

ROUTES  
133, & C, 7 (Part)



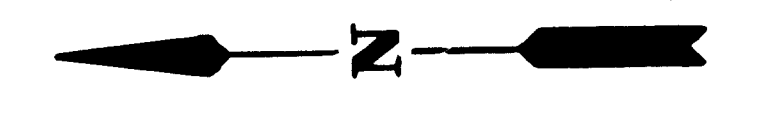
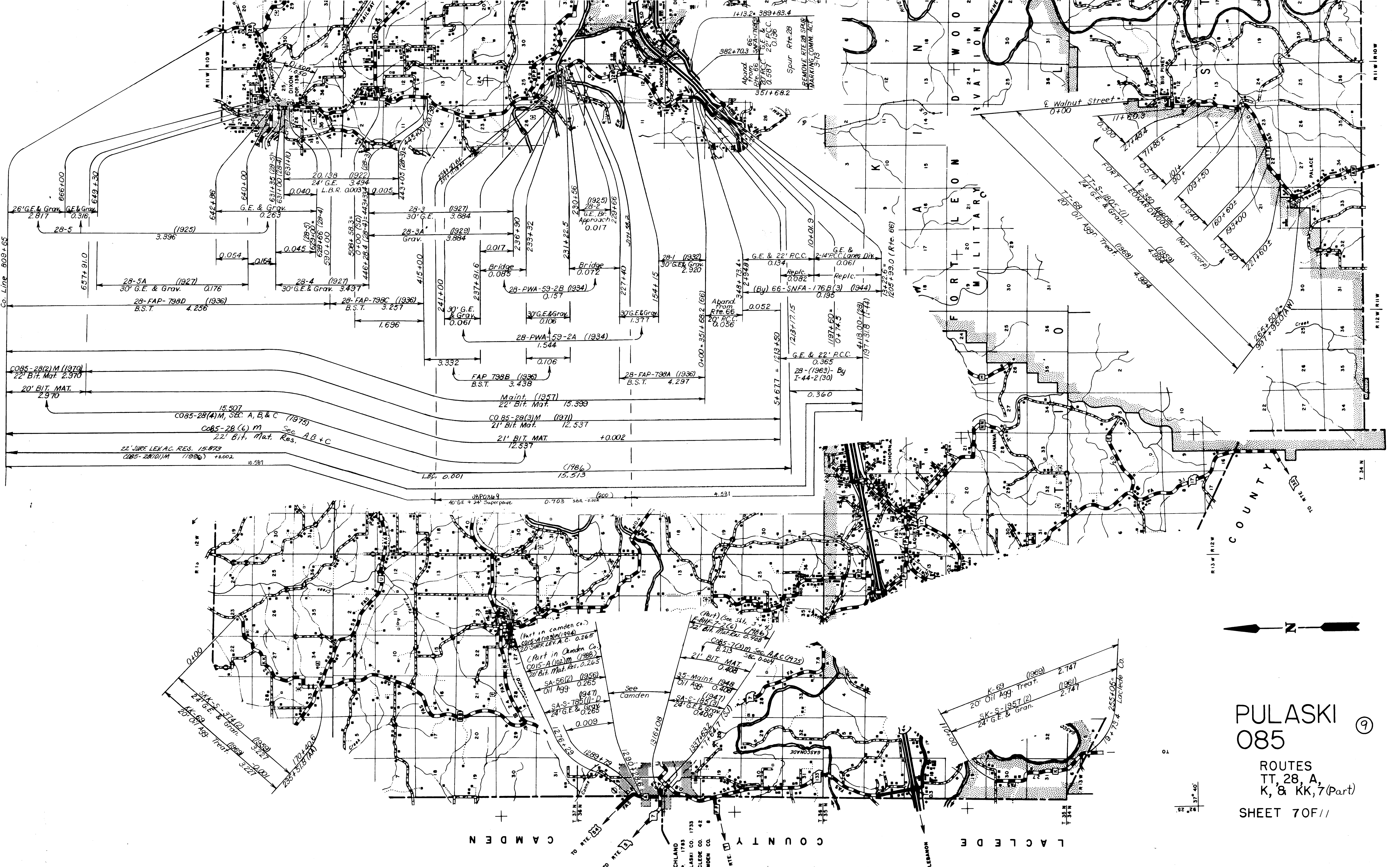






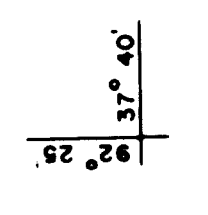
PULASKI ⑨  
 085  
 ROUTES  
 X, P, AB, F, 17 Part  
 & 44 B.L.P.  
 SHEET 60F 11



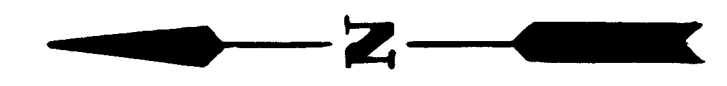
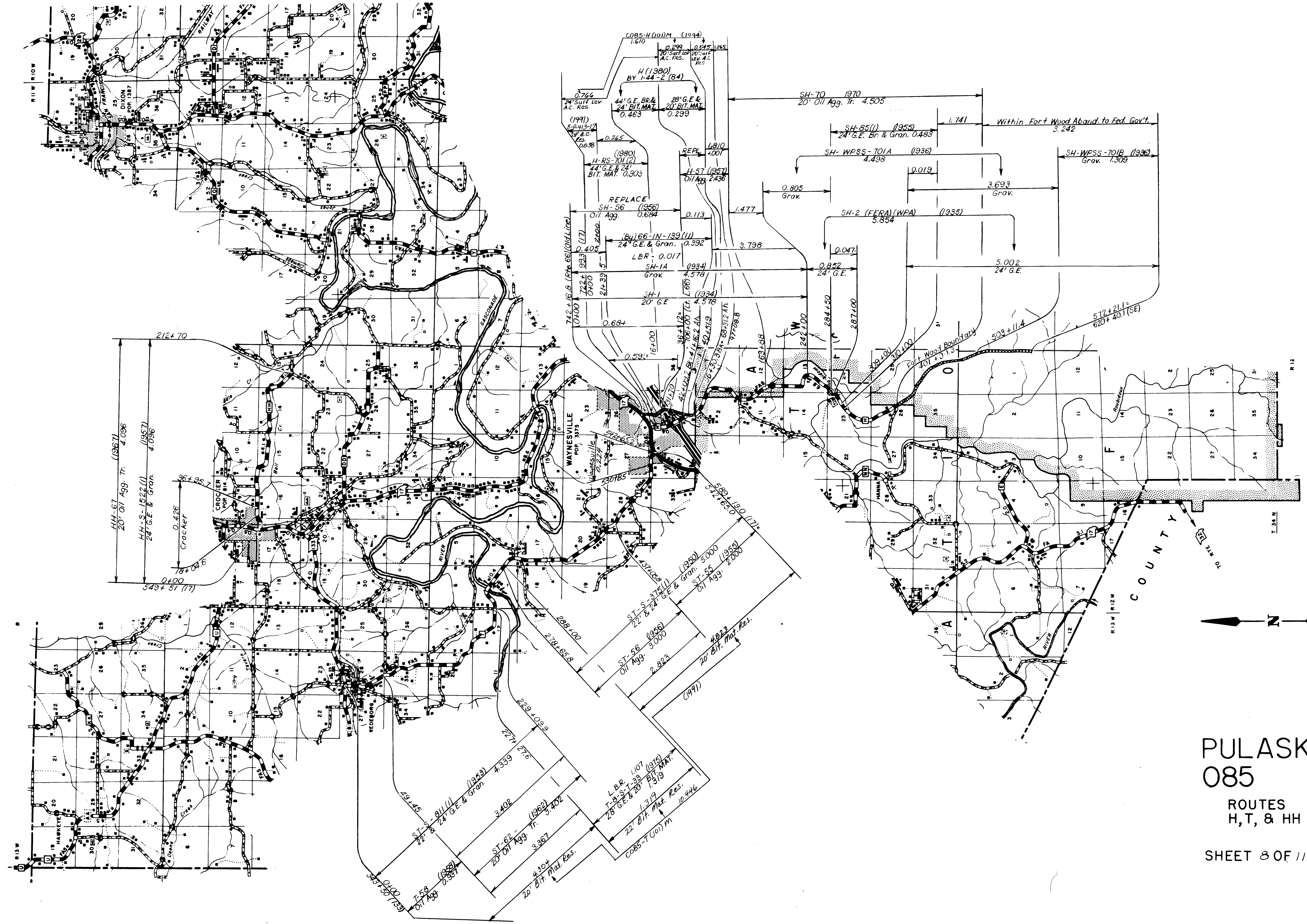


**PULASKI ⑨**  
**085**

ROUTES  
TT, 28, A,  
K, & KK, 7(Part)  
SHEET 70F//



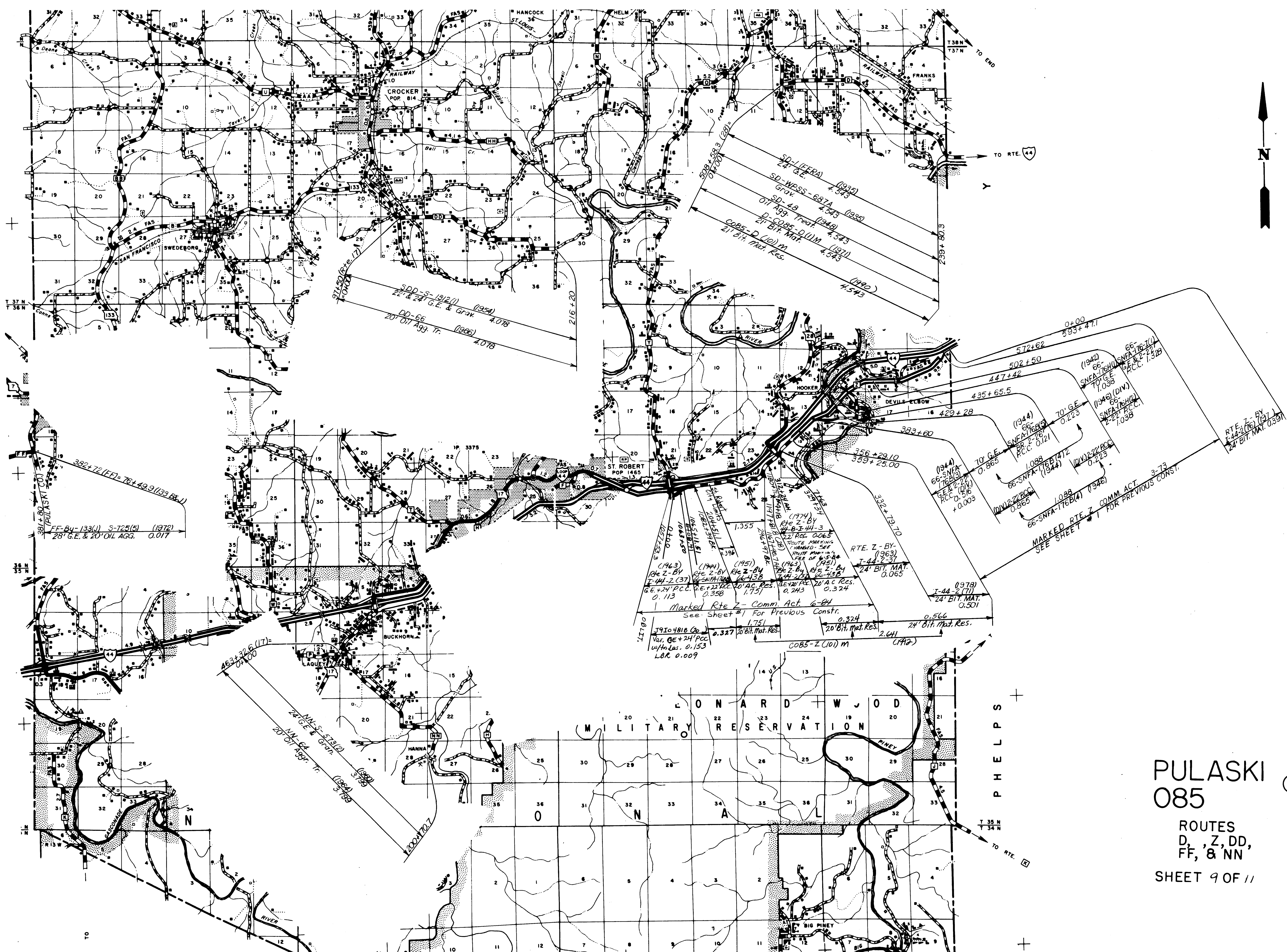




PULASKI 085

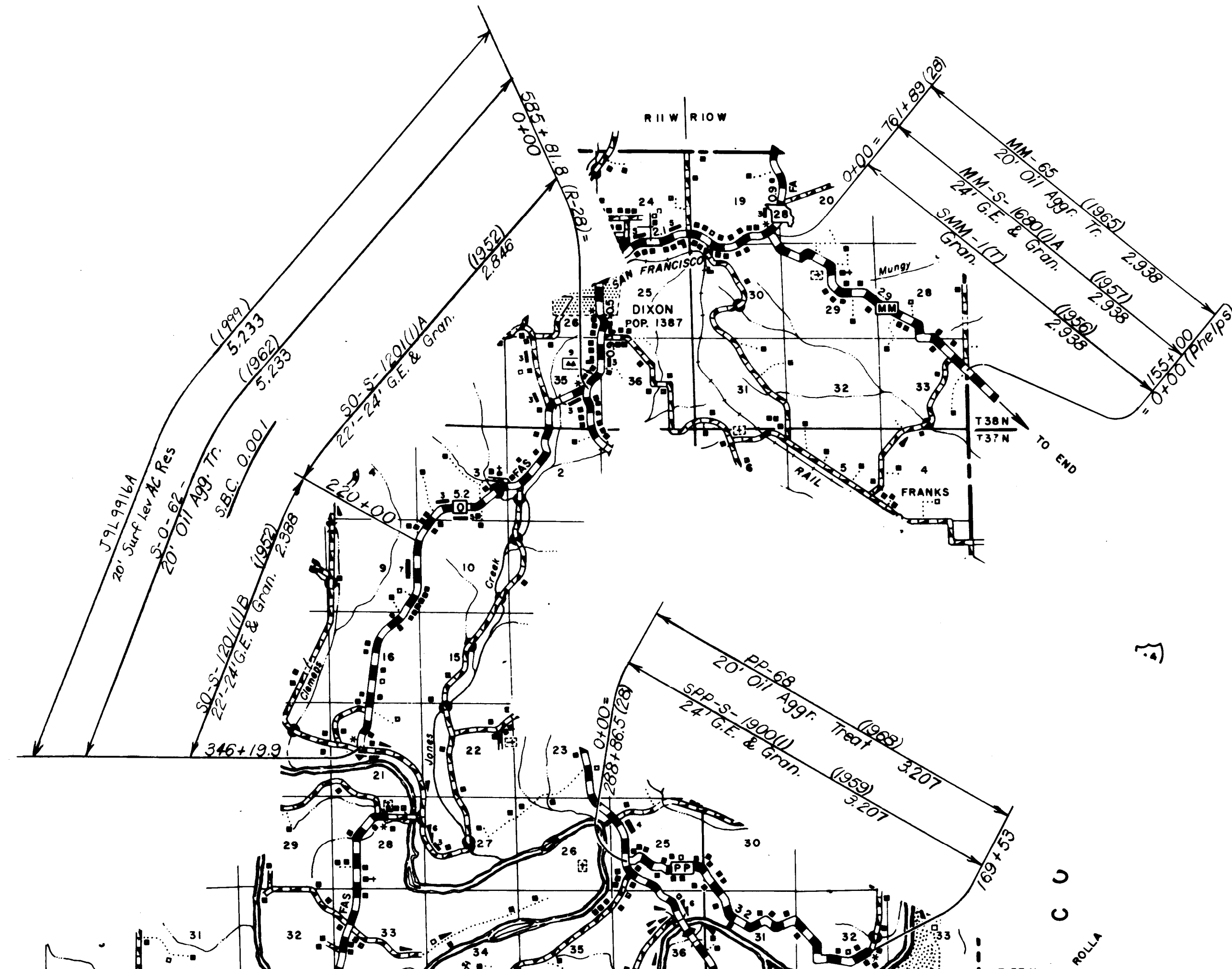
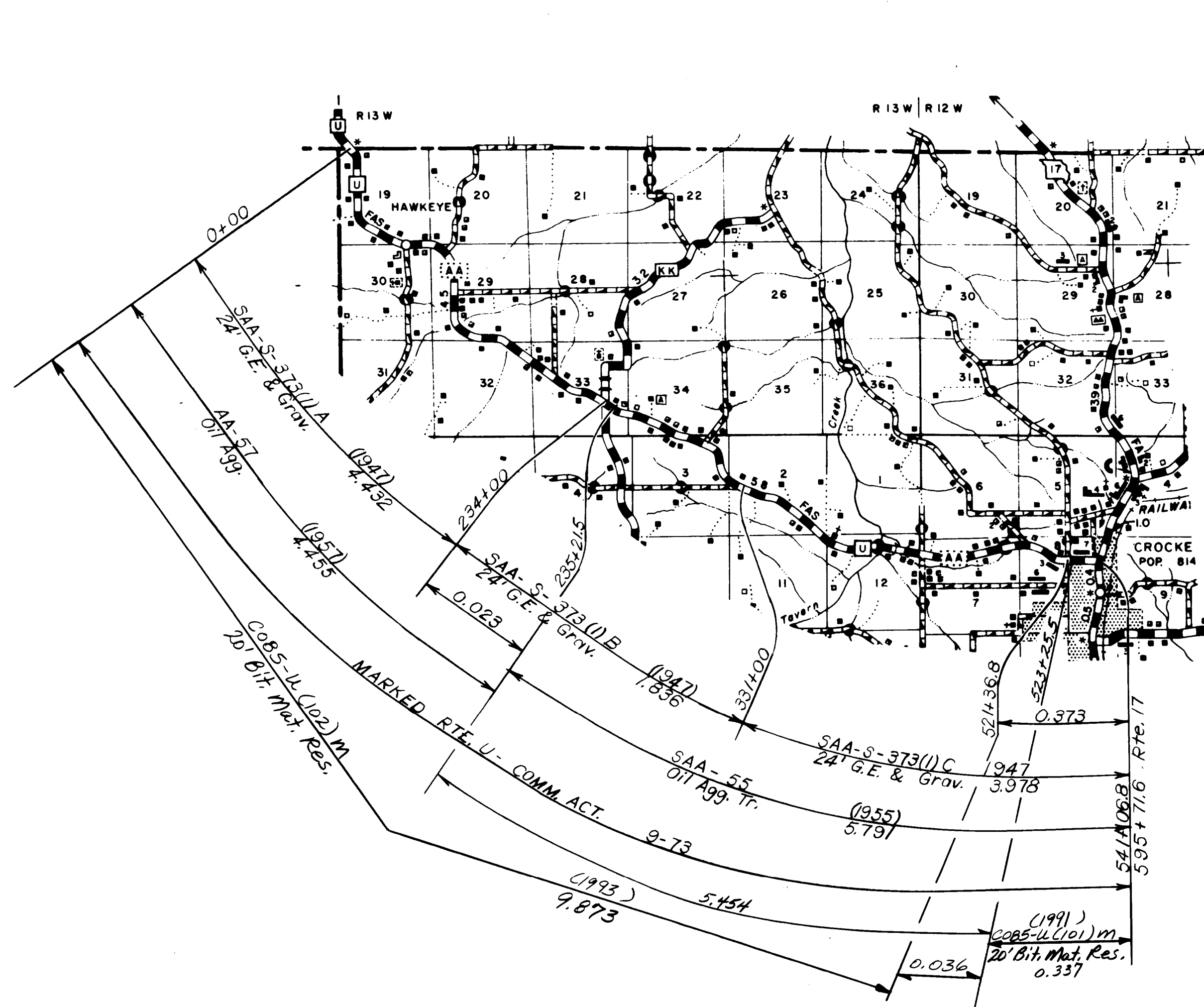
ROUTES H, T, & HH



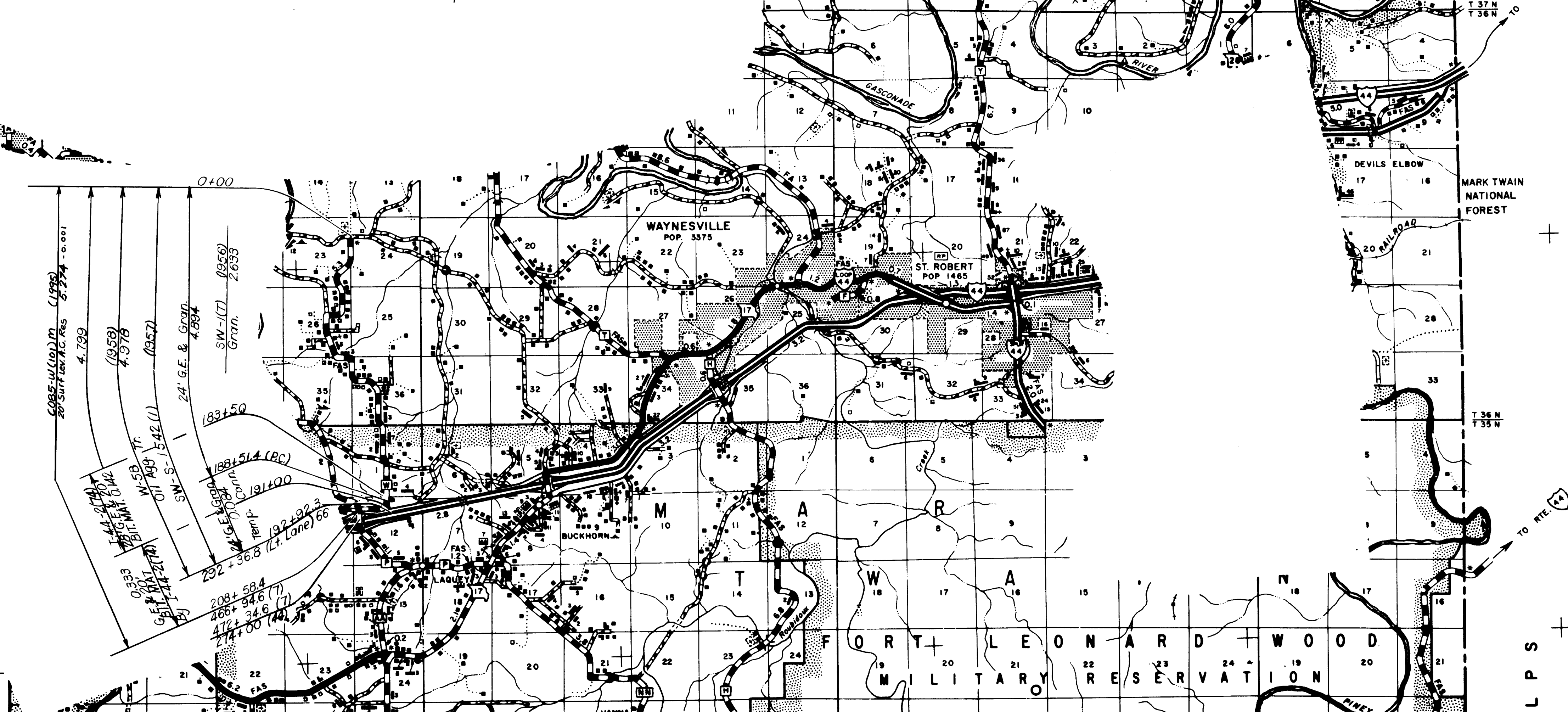


PULASKI ⑨  
 085  
 ROUTES  
 D, Z, DD,  
 FF, & NN  
 SHEET 9 OF 11





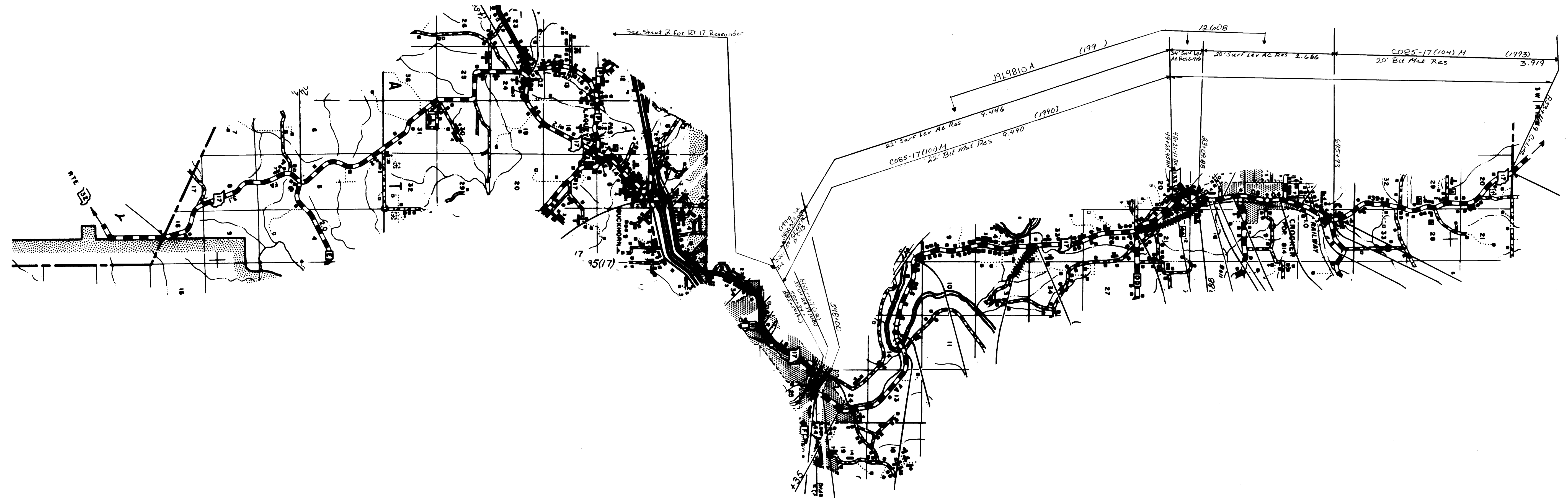
RICHLAND  
POP. 1783  
OP IN PULASKI CO.  
OP IN LACLEDE CO.  
OP IN CAMDEN CO.



PULASKI 085 (9)  
ROUTES  
U, O, MM,  
PP, & W  
SHEET 10 OF 11







PULASKI ⑨  
085

ROUTE  
17(PART)  
*See sheet 2 For History*

SHEET 11 OF 11