



MEMORANDUM
Missouri Department of Transportation
St. Louis District - Design

DATE: March 20, 2024

TO: Thomas K. Blair, P.E.
District Engineer

FROM: Alvin Nieves-Rosario, P.E.
Project Manager

SUBJECT: St. Louis District - Design
Route D, St. Louis City
Pavement Resurfacing and Safety Improvements
Job No. J6S3438
Conceptual Study Report

LOCATION

This project is located on Route D from St. Louis City limits, to Tucker Boulevard.

See Attachment A for Location Map.

PURPOSE AND NEED

Missouri Department of Transportation (MoDOT) is proposing to resurface Route D (Page Boulevard/Martin Luther King Drive) from the City Limits to Tucker Boulevard. MoDOT is also evaluating the project limits to implement safety improvements. \$4m in Safety Funds have been allocated to this project.

Major Route

Minor Route

DESIGN TRAFFIC

CONCEPTUAL COST (\$1,000's)

ADT (Const. Yr. 2022)	= 9,548	Right of Way: \$ 0
ADT (Design Yr. 2042)	= 10,550	Construction: \$8,820
D	= 51.6% (East), 48.4% (West)	
% Trucks	= 7%	
Operational (Posted) Speed	= 30-35 mph	

EXISTING FACILITIES

Beginning Log Mile	Pavement		Year Built	Roadbed Width	Min. R/W Width	Access Control
	Width	Type				
9.393	48-60'	Asphalt	2007	48-60'	N/A	NONE
11.101	48-60'	Asphalt	2007	48-60'	N/A	NONE
13.35	48-60'	Asphalt	2007	48-60'	N/A	NONE
14.207	48-60'	Asphalt	2007	48-60'	N/A	NONE

PROPOSED DESIGN CRITERIA

Functional Classification	Design Speed	No. & Width Of Lanes	Roadbed Width	Right of Way	
				Width	Control
Principal Arterial	30-35	3-4 lanes 10-14'	48-60'	N/A	
Minor Arterial	30-35	3-4 lanes 10-14'	48-60'	N/A	

See Attachment B for Typical Sections and Attachment D for Road Safety Audit Executive Summary.

PROPOSED DESIGN

The proposed design for this project will mill 2.75" from the existing roadway surface and replace with the following options:

- Option 1-2" SP125CLP w/ PG 70-22 over 0.75" SP048F w/ PG 70-22
- Option 2 – 2" BP-1 w/ PG 70-22 over 0.75" BP-3 w/ PG 70-22
- Option 3 – 2.75"SP125CLP w/ PG 70-22

The shoulder and parking lanes will get the same treatment as the mainline. Any necessary pavement repairs will be done during construction.

In addition to the resurfacing safety improvements are proposed throughout the corridor. A Road Safety Audit (RSA) was performed during the conceptual phase to identify improvements that can be implemented during this project and for future implementation. For this project \$2,000,000 in Safety Funds were allocated. After the RSA was done an additional \$2,000,000 in Safety Funds were assigned to this project. An executive summary (Attachment D) was prepared to summarize the process and include the proposed countermeasures for this corridor.

DESIGN TRAFFIC

TW NAME	BEGINNING LOG	END LOG	AADT (Const.)	AADT (Design)	D %	% TRUCKS	(POSTED) SPEED
RT D W	0.563	1.516	2031	2553.3	48	5	30
RT D W	1.516	4.622	3751	4715.6	50	3	30
RT D W	4.622	6.335	6459	8120.0	50	5	30
RT D W	6.335	7.740	6123	7697.6	48	5	30
RT D E	9.388	11.101	6456	8116.2	52	5	30
RT D E	11.101	13.350	6456	8116.2	50	5	30
RT D E	13.350	14.207	6424	8076.0	51	5	30
RT D E	14.207	15.160	3748	4711.8	50	7	30

ACCIDENT DATA AND SAFETY ENHANCEMENTS

Project Accident Rate (RT D E)- 1605.56 (2018-2022)

Statewide rate for a similar class of roadway - 245.37 (Primary Arterial)

Locations within or adjacent to the project limits which are on the “High Severity Location Lists” in the TMS database - 2019-2021 - 1 segment, 6 intersections

From Temple St to Cole St – Severity Rating = 90

- Intersection of Rte D & Grand Blvd – Severity Rating = 33
- Intersection of Rte D & Clara Ave – Severity Rating = 27
- Intersection of Rte D & Taylor Ave – Severity Rating – 24
- Intersection of Rte D & Kingshihgwya Blvd – Severity Rating – 18
- Intersection of Rte D & Skinker Pkwy – Severity Rating = 18
- Intersection of Rte D & Marcus Ave – Severity Rating = 15

See Attachment C for Crash Data.

UTILITIES

For this project the anticipated utility adjustments are for adjusting covers to grade. Additional drainage adjustments may be necessary to accommodate any raised medians or bumpouts throughout the project.

ENVIRONMENTAL SUMMARY

A conceptual Request for Environmental Services was completed on February 21, 2024.

Additional Request for Environmental Services will be submitted at all project milestones as necessary.

See Attachment E for Request for Environmental Services Submittal

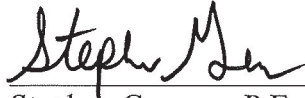
TRAFFIC CONTROL

Lane drops are anticipated during the construction. Additional short term closures may be necessary to complete the proposed work. Workhour restrictions or nighttime workhours may be necessary and will be determined during the next phase.



Digitally signed by Alvin Nieves-Rosario
Date: 2024.03.22 11:07:34-05'00'

Alvin Nieves-Rosario, P.E.
Project Manager

 3/22/24

Stephen Georges, P.E.
Transportation Project Designer

Recommendations or Comments: _____

- Attachments: A - Location Map
B - Typical Sections
C - Crash Data
D - Road Safety Audit Executive Summary
E - Request for Environmental Services Submittal

Approved by:



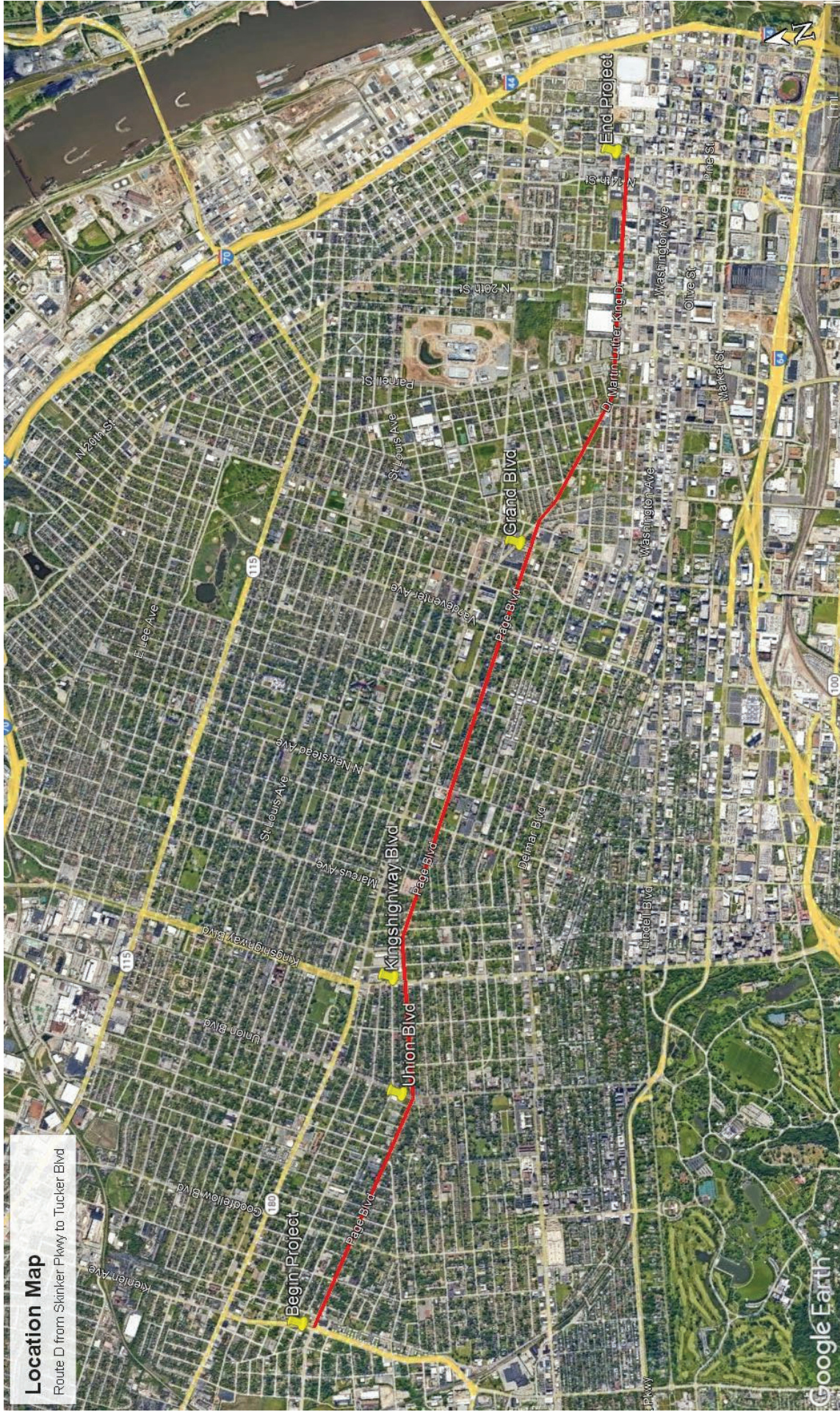
Digitally signed by Thomas Blair
Date: 2024.03.27 07:13:44
-05'00'

Thomas K. Blair, P.E.
District Engineer

Attachment A – Location Map

Location Map

Route D from Skinker Pkwy to Tucker Blvd



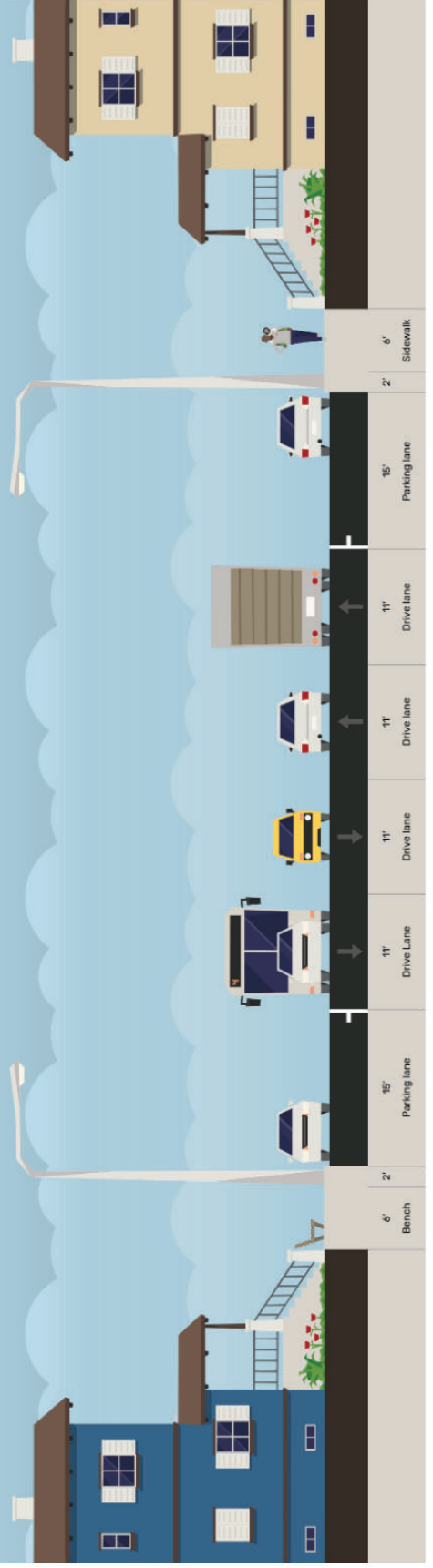
Attachment B – Typical Sections



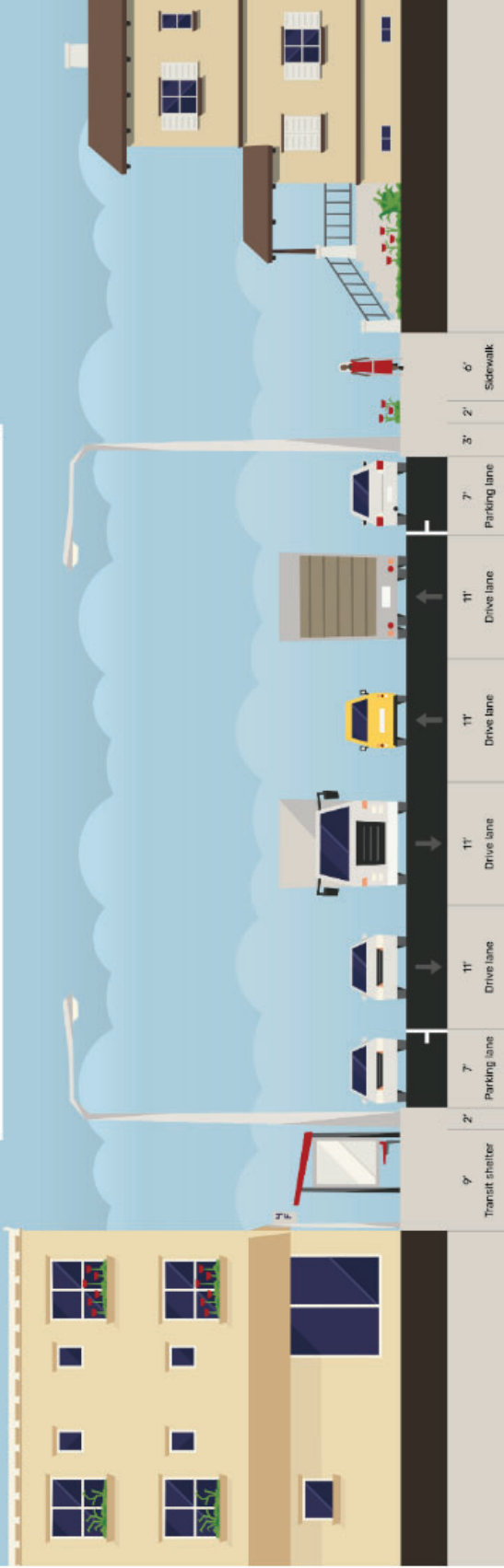
Route D - Segment 1



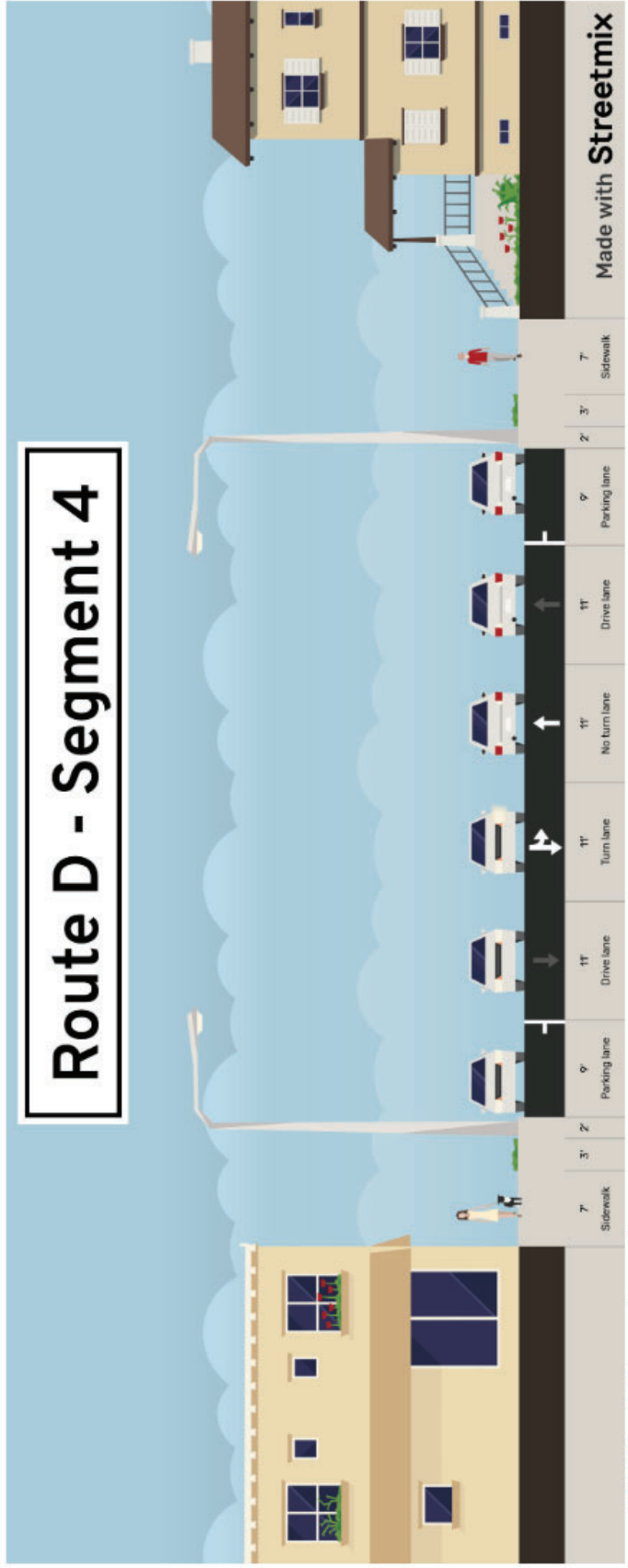
Route D - Segment 2



Route D - Segment 3

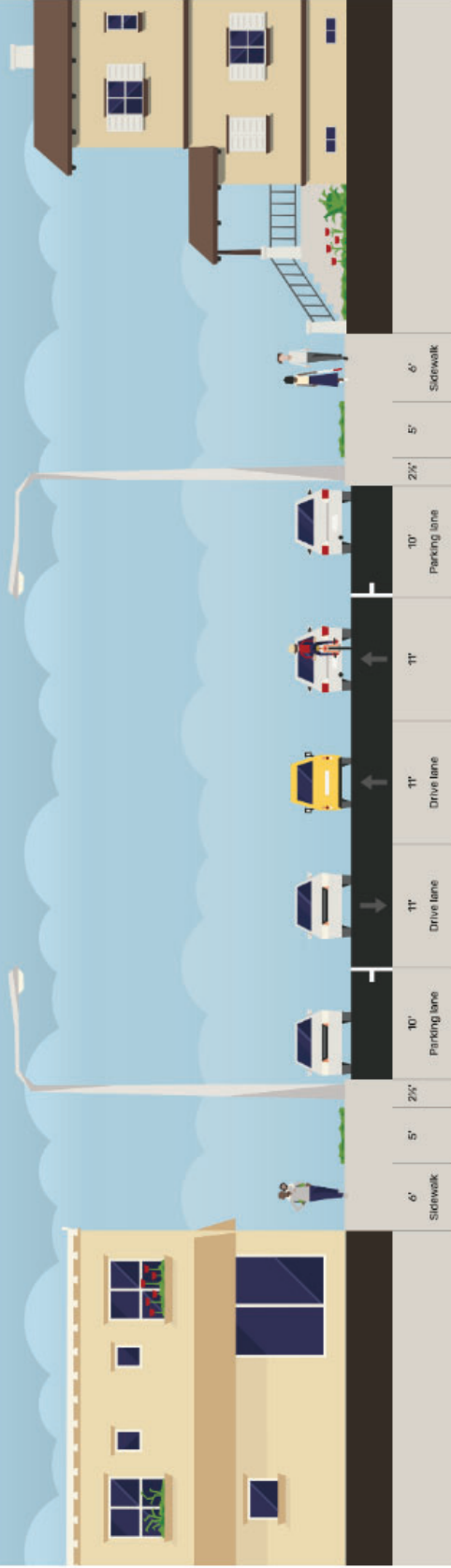


Route D - Segment 4

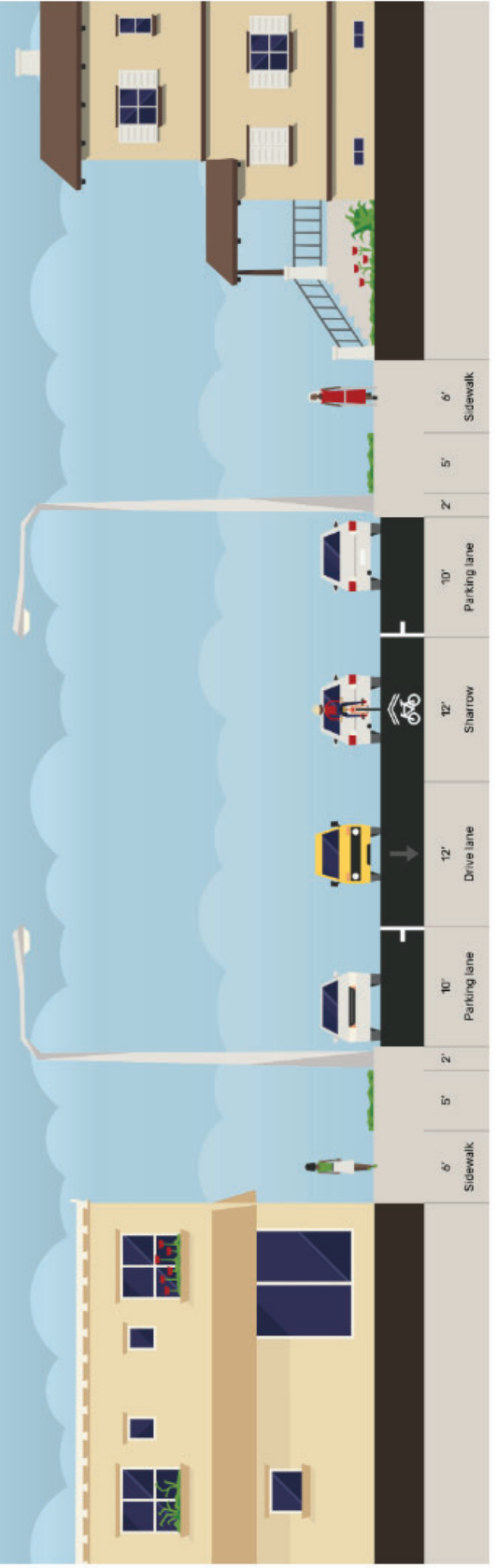


Made with **Streetmix**

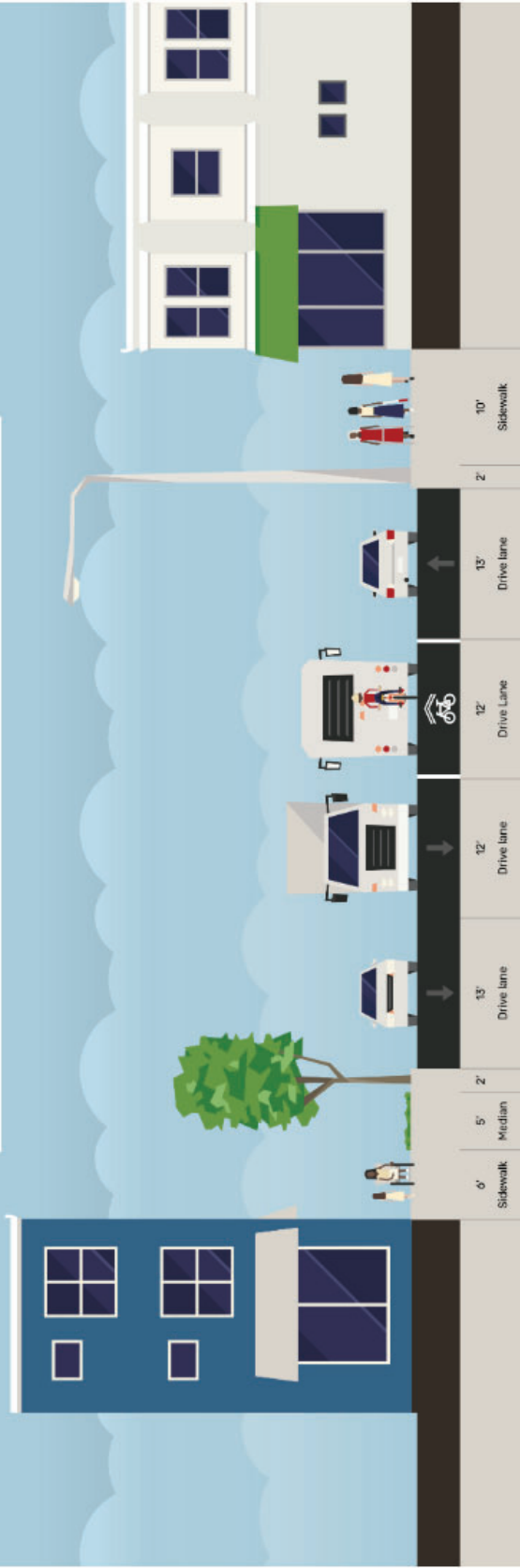
Route D - Segment 5



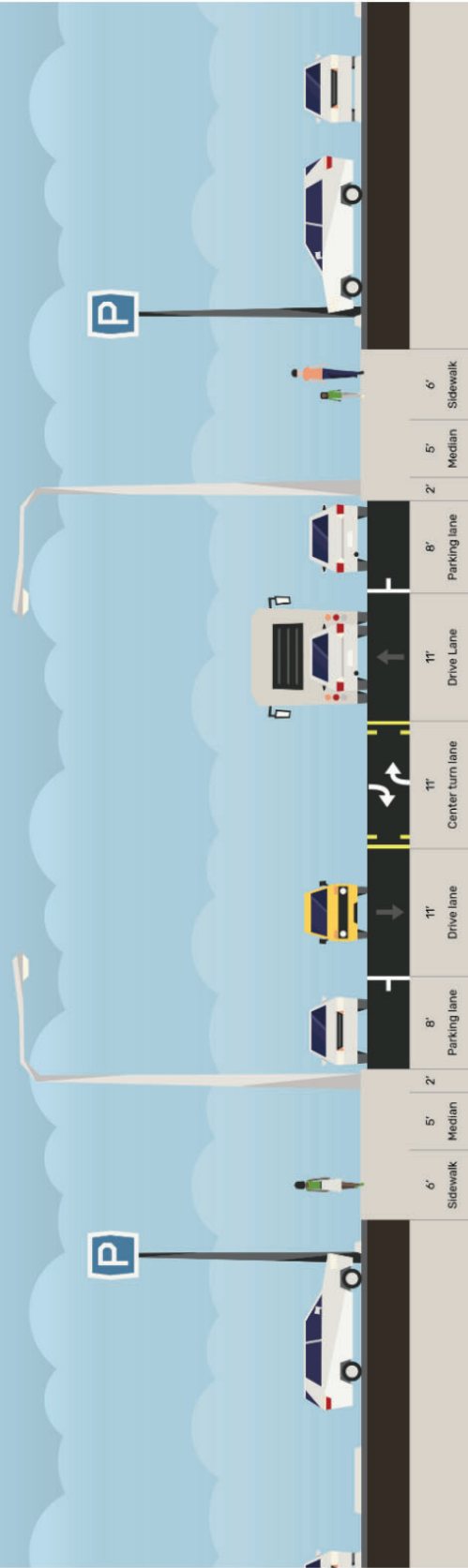
Route D - Segment 6



Route D - Segment 7



Route D - Segment 8



Attachment C – Crash Data

OFFSET	TRAVEL WAY ID	DESIGNATION	TRAVEL WAY NAME	DIRECTION	BEGIN LOG	END LOG	BEGIN DISTRICT	END DISTRICT	BEGIN COUNTY	END COUNTY	COUNTY BEGIN LOG	COUNTY END LOG	BEGIN DESCRIPTION	END DESCRIPTION
	6131	RT	D	E	9.393	15.169	5	5	ST. LOUIS CITY	ST. LOUIS CITY	0.004	5.78	.001 mile(s) before CST KIENLEN AVE S	.001 mile(s) after CST DR MARTIN LUTHER KING DR E

TYPE	2018	2019	2020	2021	2022	TOTAL
FATAL	1	2	5	1	1	10
SERIOUS INJURY	8	5	12	20	14	59
MINOR INJURY	93	111	120	120	118	562
PROPERTY DAMAGE ONLY	198	200	230	220	182	1030
TOTAL	300	318	367	361	315	1661
AADT	11627	11675	10559	10882	9306	

1 Year Statewide Rate

TYPE	2018	2019	2020	2021	2022	Rate Level
CRASH RATE	1223.87	1291.96	1648.63	1573.54	1605.56	
STATE RATE-RT	275.12	268.74	259.21	251.81	245.37	ROUTE DESG
MORE THAN 1 ROADWAY TYPE	0	0	0	0	0	ROADWAY TYPE

TYPE	2018	2019	2020	2021	2022	TOTAL
ANIMAL DRAWN VEH OR RIDDEN ANIMAL	0	0	0	0	0	0
ANIMAL NOT DEER/DOG/FARM ANIMAL	0	0	0	0	0	0
ANIMAL OTHER THAN DEER	0	0	0	0	0	0
AVOIDING	1	2	0	2	2	7
BACKING	0	1	1	0	0	2
CHANGING LANE	6	4	6	3	5	24
CROSS MEDIAN	0	0	0	0	0	0
DEBRIS	0	0	0	1	0	1
DEER	0	0	0	0	0	0
DOG	0	0	1	1	0	2
DUAL LEFTS COLLIDE	0	0	1	0	0	1
DUAL RIGHTS COLLIDE	0	0	0	0	0	0
FARM ANIMAL	0	0	0	0	0	0
FIXED OBJECT	1	1	0	0	1	3
HEAD ON	14	10	22	22	12	80
JACKKNIFE	0	0	0	0	0	0
LEFT TURN	21	30	23	36	38	148
LEFT TURN RIGHT ANGLE COLLISION	11	12	13	18	16	70
OTHER	1	5	12	7	8	33
OUT OF CONTROL	26	36	40	37	26	165
PARKING OR PARKED CAR	27	18	29	23	23	120
PASSING	30	39	38	30	28	165
PEDALCYCLE	0	1	1	0	1	3
PEDESTRIAN	5	6	9	9	6	35
REAR END	86	76	74	82	58	376
RIGHT ANGLE	49	51	66	60	74	300
RIGHT TURN	4	8	2	5	3	22
RIGHT TURN RIGHT ANGLE COLLISION	3	8	9	7	4	31
SIDESWIPE	5	2	4	10	2	23
TOWED UNIT DISCONNECTS	0	0	0	0	0	0
U - TURN	10	8	16	8	8	50
WRONG WAY ON DIVIDED HIGHWAY	0	0	0	0	0	0
TOTAL	300	318	367	361	315	1661

This report contains information that is protected from disclosure by federal law, 23 USC Section 409 and the Missouri Open Records Law (Sunshine Act), Section 610.021 RSMo. Please review MoDOT's policy and procedure manual on the Sunshine Act before releasing any of the information contained herein.

County	Travelway	Log	Crash Class	Date	Severity Rating	Image #	Intersection #	Light Cond	Road Surf Cond	Weather Cond	Travelway Id	Day of Week	Time	PROP_DMIG_IND	TRANSACTION_ID	Alt Location Street
ST. LOUIS CITY	RT D E	11.552 PEDESTRIAN		8/7/2021	FATAL	2210066787	0 DAYLIGHT	DRY	CLEAR	6131 SAT	921	921	32095421	210087157	CST MARCUS AVE	
ST. LOUIS CITY	RT D E	12.317 PASSING		12/9/2020	FATAL	220001378	0 DARK W/ STREET LIGHTS ON	DRY	CLEAR	6131 WED	1934	1934	3111794	208807273	CST WHITTIER ST	
ST. LOUIS CITY	RT D E	11.343 REAR END		7/21/2020	FATAL	2200054264	267243 DAYLIGHT	DRY	CLOUDY	6131 TUE	1155	1155 OTHER	31127021	208794700	CST BAYARD AVE	
ST. LOUIS CITY	RT D E	10.067 OUT OF CONTROL		3/1/2020	FATAL	2200018615	265496 DARK W/ STREET LIGHTS ON	WET	CLOUDY	6131 SUN	2050	2050 MODOT	29554500	206691535	CST CLARA AVE	
ST. LOUIS CITY	RT D E	10.573 PEDESTRIAN		2/11/2020	FATAL	2200012651	266802 DAYLIGHT	DRY	CLEAR	6131 TUE	1630	1630	29548686	206678337	CST UNION BLVD	
ST. LOUIS CITY	RT D E	11.553 PARKING OR PARKED CAR		1/17/2020	FATAL	2200002875	267553 DARK W/ STREET LIGHTS ON	DRY	CLEAR	6131 WED	309	309	31142202	208857396	CST MARCUS AVE	
ST. LOUIS CITY	CST GRAND BLVD S	2.33 PEDESTRIAN		9/27/2019	FATAL	0190014679	271361 DARK W/ STREET LIGHTS ON	DRY	CLEAR	68731 FRI	1909	1909	21679404	192774816	RT D	
ST. LOUIS CITY	RT D E	12.991 RIGHT ANGLE		7/24/2019	FATAL	0190010671	270851 DAYLIGHT	DRY	CLEAR	6131 WED	1622	1622	19966227	190120987	CST PRAIRIE AVE	
ST. LOUIS CITY	RT D E	12.195 OUT OF CONTROL		4/22/2018	FATAL	0180000159	268996 DAYLIGHT	WET	CLOUDY	6131 SUN	1402	1402	19961117	190109159	CST PENDELTON AVE	
ST. LOUIS CITY	RT D E	10.159 PEDESTRIAN		9/28/2017	FATAL	0170011283	0 DARK W/ STREET LIGHTS ON	DRY	CLEAR	6131 THU	2101	2101	19955934	190097149	CST BELT AVE	

This report contains information that is protected from disclosure by federal law, 23 USC Section 409 and the Missouri Open Records Law (Sunshine Act), Section 610.021 RSMo. Please review MoDOT's policy and procedure manual on the Sunshine Act before releasing any of the information contained herein.

County	Trafficway	Log	Crash Class	Date	Severity Rating	Image #	Intersection #	Light Control	Road Surf Cond	Weather Cond	Travelway Dir	Day of Week	Time	PROP DMG IND	TRANSACTION ID	OBJECT ID	Location Street
ST. LOUIS CITY	RT DE	13.23 RIGHT ANGLE		12/27/2021	SERIOUS INJURY	221014441	271361	DARK W/ STREET LIGHTS ON	DRY	CLOUDY	6131 MON	1759 OTHER	1759 OTHER	215837518	215837518	CST GRAND BLVD	
ST. LOUIS CITY	CST N. SARAH ST S	1.035 RIGHT ANGLE		12/27/2021	SERIOUS INJURY	221013177	267676	DAYLIGHT	DRY	DRY	11042 MON	1440	1440	215676425	215676425	RT D	
ST. LOUIS CITY	CST SKINNER PKWYS	0 RIGHT ANGLE		11/26/2021	SERIOUS INJURY	221011651	263760	DAYLIGHT	DRY	CLOUDY	113000 WED	1747	1747	36081712	36081712	RT D	
ST. LOUIS CITY	RT DE	11.14 PEDESTRIAN		11/26/2021	SERIOUS INJURY	221010596	0	DARK W/ STREET LIGHTS ON	DRY	CLEAR	6131 FRI	2302	2302	215661624	215661624	CST KINGSHIGHWAY BLVD	
ST. LOUIS CITY	CST TAYLOR AVES	11.100 RIGHT ANGLE		9/18/2021	SERIOUS INJURY	221007866	267094	DARK W/ STREET LIGHTS ON	DRY	CLEAR	120220 SAT	1614 OTHER	1614 OTHER	210474394	210474394	CST KINGSHIGHWAY BLVD	
ST. LOUIS CITY	RT DE	0.754 RIGHT ANGLE		8/19/2021	SERIOUS INJURY	221008385	268223	DAYLIGHT	DRY	CLEAR	6131 SAT	3234044	3234044	210603790	210603790	RT D	
ST. LOUIS CITY	RT DE	10.118 HEAD ON		8/7/2021	SERIOUS INJURY	2210080152	267094	DARK W/ STREET LIGHTS ON	DRY	CLEAR	6131 TUE	1644 OTHER	1644 OTHER	210530951	210530951	CST MONTCLAIR AVE	
ST. LOUIS CITY	CST KINGSHIGHWAY BLVD S	2.676 REAR END		8/6/2021	SERIOUS INJURY	2210065548	267094	DARK W/ STREET LIGHTS ON	DRY	CLEAR	79484 FRI	2040	2040	209601254	209601254	RT D	
ST. LOUIS CITY	RT DE	14.209 REAR END		8/4/2021	SERIOUS INJURY	2210064243	273752	DAYLIGHT	DRY	CLEAR	6131 WED	1242	1242	21744465	21744465	209601205	CST JEFFERSON AVE
ST. LOUIS CITY	RT DE	13.999 OTHER		6/29/2021	SERIOUS INJURY	2210053890	271086	DAYLIGHT	DRY	CLEAR	6131 SAT	1231	1231	209831609	209831609	RT D	
ST. LOUIS CITY	CST GRAND BLVD S	2.319 LEFT TURN		6/29/2021	SERIOUS INJURY	2210053890	271361	DAYLIGHT	DRY	CLEAR	68731 TUE	1221	1221	208831367	208831367	CST VANDEVENTER AVE	
ST. LOUIS CITY	RT DE	11.849 HEAD ON		5/26/2021	SERIOUS INJURY	2210045023	268223	DAYLIGHT	DRY	CLEAR	6131 WED	1521	1521	208302027	208302027	CST TAYLOR AVE	
ST. LOUIS CITY	RT DE	12.821 HEAD ON		5/26/2021	SERIOUS INJURY	2210045023	268223	DAYLIGHT	DRY	CLEAR	6131 WED	1521	1521	208302027	208302027	CST TAYLOR AVE	
ST. LOUIS CITY	RT DE	11.849 HEAD ON		5/26/2021	SERIOUS INJURY	2210045023	268223	DAYLIGHT	DRY	CLEAR	6131 WED	1521	1521	208302027	208302027	CST TAYLOR AVE	
ST. LOUIS CITY	RT DE	11.849 HEAD ON		5/26/2021	SERIOUS INJURY	2210045023	268223	DAYLIGHT	DRY	CLEAR	6131 WED	1521	1521	208302027	208302027	CST TAYLOR AVE	
ST. LOUIS CITY	RT DE	11.716 PARKING OR PARKED CAR		5/26/2021	SERIOUS INJURY	2210045023	268223	DAYLIGHT	DRY	CLEAR	6131 WED	1521	1521	208302027	208302027	CST TAYLOR AVE	
ST. LOUIS CITY	RT DE	11.242 HEAD ON		3/12/2021	SERIOUS INJURY	2210024649	267112	DAYLIGHT	DRY	CLEAR	6131 WED	1514	1514	20262473	20262473	204600738	CST FLEUCLID AVE
ST. LOUIS CITY	RT DE	13.23 LEFT TURN		3/6/2021	SERIOUS INJURY	2210016470	271361	DAYLIGHT	DRY	CLEAR	6131 SAT	2158	2158	208827612	208827612	CST GRAND BLVD	
ST. LOUIS CITY	RT DE	10.014 PARKING OR PARKED CAR		1/14/2021	SERIOUS INJURY	2210004207	267659	DARK W/ STREET LIGHTS ON	WET	CLEAR	6131 THU	2443	2443	202975424	202975424	CST TEMPLE PL	
ST. LOUIS CITY	CST PENDLETON AVE S	0.232 RIGHT ANGLE		1/12/2021	SERIOUS INJURY	2210002652	268994	DAYLIGHT	DRY	CLOUDY	99214 WED	1443	1443	202904152	202904152	CST PAGE BLVD	
ST. LOUIS CITY	CST GRAND BLVD S	2.335 PEDESTRIAN		1/12/2021	SERIOUS INJURY	2200010590	271361	DARK W/ STREET LIGHTS ON	DRY	CLEAR	68731 MON	1918	1918	208807078	208807078	RT D	
ST. LOUIS CITY	RT DE	13.38 PEDESTRIAN		10/26/2020	SERIOUS INJURY	2200079657	271361	DARK W/ STREET LIGHTS ON	WET	CLEAR	6131 TUE	2036	2036	31127823	31127823	208801302	CST SHERIDAN AVE
ST. LOUIS CITY	RT DE	10.289 RIGHT ANGLE		9/21/2020	SERIOUS INJURY	2200080258	264960	DAYLIGHT	DRY	CLEAR	6131 TUE	1259	1259	24584995	24584995	199384470	CST BELT AVE
ST. LOUIS CITY	RT DE	9.952 OUT OF CONTROL		8/15/2020	SERIOUS INJURY	2200075497	265216	DAYLIGHT	DRY	CLEAR	6131 MON	1740	1740	199228540	199228540	CST BLACKSTONE AVE	
ST. LOUIS CITY	RT DE	12.032 RIGHT ANGLE		8/10/2020	SERIOUS INJURY	2200065417	268608	DAYLIGHT	DRY	CLEAR	6131 SAT	1925	1925	208796877	208796877	CST NEWSTEAD AVE	
ST. LOUIS CITY	CST CLARA AVE S	0.413 RIGHT ANGLE		8/10/2020	SERIOUS INJURY	2200058135	265496	DAYLIGHT	DRY	CLEAR	29564 MON	1329	1329	196117553	196117553	CST PAGE BLVD	
ST. LOUIS CITY	RT DE	11.849 RIGHT ANGLE		8/8/2020	SERIOUS INJURY	2200056938	268223	DARK W/ STREET LIGHTS ON	WET	RAIN	6131 SAT	2258	2258	208795490	208795490	CST TAYLOR AVE	
ST. LOUIS CITY	RT DE	14.207 RIGHT ANGLE		7/31/2020	SERIOUS INJURY	2200056952	273752	DAYLIGHT	DRY	CLEAR	6131 WED	1357	1357	31127868	31127868	208795419	CST JEFFERSON AVE
ST. LOUIS CITY	CST KINGSHIGHWAY BLVD S	2.678 HEAD ON		7/7/2020	SERIOUS INJURY	2200055925	267094	DARK W/ STREET LIGHTS ON	WET	CLOUDY	79484 FRI	219	219	196039644	196039644	RT D	
ST. LOUIS CITY	RT DE	10.959 HEAD ON		6/10/2020	SERIOUS INJURY	2200047448	265760	DARK W/ STREET LIGHTS ON	DRY	CLEAR	6131 TUE	2347	2347	194466657	194466657	CST SKINKER PKWY	
ST. LOUIS CITY	RT DE	15.048 RIGHT ANGLE		4/18/2020	SERIOUS INJURY	2200027494	274554	DAYLIGHT	DRY	CLEAR	6131 WED	1624	1624	21125376	21125376	208787921	CST N. 14TH ST
ST. LOUIS CITY	CST TUCKER BLVD S	0.493 PEDESTRIAN		11/20/2019	SERIOUS INJURY	2190808749	274682	DAYLIGHT	DRY	CLEAR	8792 WED	608	608	18591979	18591979	19347943	CST DR. MARTIN LUTHER KING DR
ST. LOUIS CITY	RT DE	13.44 HEAD ON		8/26/2019	SERIOUS INJURY	019001202	0	DAYLIGHT	WET	CLOUDY	6131 MON	1026	1026	208733325	208733325	CST COMPTON AVE	
ST. LOUIS CITY	CST CLARA AVE S	0.413 RIGHT ANGLE		4/18/2019	SERIOUS INJURY	0190010607	265496	DAYLIGHT	DRY	CLEAR	29564 THU	1700	1700	16046423	16046423	186386002	CST PAGE BLVD
ST. LOUIS CITY	RT DE	10.96 OUT OF CONTROL		3/19/2019	SERIOUS INJURY	0190017484	0	DARK W/ STREET LIGHTS ON	DRY	CLEAR	6131 TUE	2035	2035	19968802	19968802	190122294	CST ACADEMY AVE
ST. LOUIS CITY	RT DE	11.531 LEFT TURN		12/8/2018	SERIOUS INJURY	0190010384	267553	DAYLIGHT	DRY	CLEAR	6131 WED	1233	1233	31108847	31108847	208729297	CST ACADEMY AVE
ST. LOUIS CITY	RT DE	10.541 REAR END		12/8/2018	SERIOUS INJURY	0190012549	268682	DAYLIGHT	DRY	CLEAR	6131 SAT	1430	1430	19962349	19962349	190119399	CST UNION BLVD
ST. LOUIS CITY	RT DE	10.521 REAR END		12/2/2018	SERIOUS INJURY	0180001845	268223	DARK W/ STREET LIGHTS ON	DRY	CLEAR	6131 MON	1610	1610	19968342	19968342	190112605	CST BELLAIR ST
ST. LOUIS CITY	RT DE	9.933 HEAD ON		10/1/2018	SERIOUS INJURY	0180001451	264900	DAYLIGHT	DRY	CLEAR	6131 MON	1515	1515	18961213	18961213	190109417	CST GOODFELLOW BLVD
ST. LOUIS CITY	RT DE	13.111 PARKING OR PARKED CAR		5/20/2018	SERIOUS INJURY	0180000453	271086	DAYLIGHT	DRY	CLEAR	6131 WED	1657	1657	31091368	31091368	208686589	CST SPRING AVE
ST. LOUIS CITY	CST GRAND BLVD S	2.335 LEFT TURN RIGHT ANGLE COLLISION		3/9/2018	SERIOUS INJURY	0180000432	271361	DARK W/ STREET LIGHTS ON	WET	RAIN	68731 SUN	229	229	208686577	208686577	CST PAGE BLVD	
ST. LOUIS CITY	RT DE	12.859 U-TURN		3/8/2018	SERIOUS INJURY	0180000844	0	DAYLIGHT	WET	RAIN	6131 MON	1503	1503	31091332	31091332	208686481	CST VANDEVENTER AVE
ST. LOUIS CITY	CST GRAND BLVD S	2.335 RIGHT ANGLE		11/8/2017	SERIOUS INJURY	0180000137	271361	DAYLIGHT	WET	RAIN	68731 THU	1436	1436	208686480	208686480	CST PAGE BLVD	
ST. LOUIS CITY	RT DE	10.997 OUT OF CONTROL		9/12/2017	SERIOUS INJURY	0170014165	264424	DAYLIGHT	WET	RAIN	6131 SAT	906	906	199097645	199097645	CST PAGE BLVD	
ST. LOUIS CITY	CST HAMILTON AVE S	0.415 PEDESTRIAN		8/12/2017	SERIOUS INJURY	0170011217	264424	DAYLIGHT	DRY	CLOUDY	107702 TUE	1104	1104	4245760	4245760	166254057	CST PAGE BLVD
ST. LOUIS CITY	CST CLARA AVE S	0.413 RIGHT ANGLE		3/23/2017	SERIOUS INJURY	0170010239	265496	DARK W/ STREET LIGHTS ON	DRY	CLEAR	29564 SAT	2103	2103	166258395	166258395	CST PAGE BLVD	
ST. LOUIS CITY	RT DE	11.243 REAR END		2/28/2017	SERIOUS INJURY	0170015463	270466	DAYLIGHT	WET	RAIN	6131 THU	1650	1650	39983211	39983211	230795732	CST WALTON AVE
ST. LOUIS CITY	RT DE	12.821 LEFT TURN		23/2017	SERIOUS INJURY	0170010106	267094	DARK W/ STREET LIGHTS ON	DRY	CLEAR	6131 FRI	2002	2002	19955846	19955846	208641327	CST VANDEVENTER AVE
ST. LOUIS CITY	RT DE	11.1 REAR END		23/2017	SERIOUS INJURY	0170010131	267094	DARK W/ STREET LIGHTS ON	DRY	CLEAR	6131 FRI	2002	2002	19955846	19955846	208641327	CST KINGSHIGHWAY BLVD
ST. LOUIS CITY	RT DE	12.484 REAR END		1/15/2017	SERIOUS INJURY	0170010017	271361	DARK W/ STREET LIGHTS ON	WET	RAIN	68731 SUN	130	130	208639546	208639546	CST PAGE BLVD	

This report contains information that is protected from disclosure by federal law, 23 USC Section 409 and the Missouri Open Records Law (Sunshine Act), Section 610.021 RSMo. Please review MoDOT's policy and procedure manual on the Sunshine Act before releasing any of the information contained herein.

County	Travelway	Log	Crash Class	Date	Severity Rating	Image #	Intersection #	Light Cond	Road Surf Cond	Weather Cond	Travelway Id	Day of Week	Time	PROP_DMG_IND	TRAVELWAY_ID	OBJECT_ID	At Location Street
ST. LOUIS CITY	RT DE	10.51	PEDESTRIAN	12/29/2021	PROPERTY DAMAGE ONLY	2210114466	0	DARK W/ STREET LIGHTS ON	DRY	CLEAR	6131	WED	1937		36590131	216741043	CST UNION BLVD
ST. LOUIS CITY	RT DE	11.14	PEDESTRIAN	11/26/2021	SERIOUS INJURY	2210103961	0	DARK W/ STREET LIGHTS ON	DRY	CLEAR	6131	FRI	1747		34543122	213661624	CST KINGSHIGHWAY BLVD
ST. LOUIS CITY	RT DE	12.304	PEDESTRIAN	11/23/2021	MINOR INJURY	2210102473	0	DAYLIGHT	DRY	CLEAR	6131	TUE	848		36036486	215551163	CST PENDELETON AVE
ST. LOUIS CITY	RT DE	11.102	PEDESTRIAN	11/20/2021	MINOR INJURY	2210107576	267045	DARK W/ STREET LIGHTS ON	DRY	CLEAR	6131	SAT	1732		36188017	215853169	CST KINGSHIGHWAY BLVD
ST. LOUIS CITY	CST GRAND BLVD S	2.336	PEDESTRIAN	11/18/2021	MINOR INJURY	2210100482	271361	DARK W/ STREET LIGHTS ON	DRY	CLEAR	68731	THU	137		36168853	215660545	CST PAGE BLVD
ST. LOUIS CITY	RT DE	11.552	PEDESTRIAN	8/7/2021	FATAL	2210066787	0	DAYLIGHT	DRY	CLEAR	6131	SAT	921		32095421	210887157	CST MARCUS AVE
ST. LOUIS CITY	CST CORA AVE S	0.606	PEDESTRIAN	2/24/2021	PROPERTY DAMAGE ONLY	2210016836	267753	DAYLIGHT	DRY	CLEAR	155642	WED	1031	OTHER	2927875	206038796	CST PAGE BLVD
ST. LOUIS CITY	RT DE	11.621	PEDESTRIAN	2/24/2021	MINOR INJURY	2210021244	267753	DAYLIGHT	DRY	CLEAR	6131	WED	1030		32111741	210126234	CST CORA AVE
ST. LOUIS CITY	RT DE	10.287	PEDESTRIAN	2/20/2021	MINOR INJURY	2210013490	266190	DARK W/ STREET LIGHTS ON	WET	CLOUDY	6131	SAT	2333		29241921	205964144	CST BELT AVE
ST. LOUIS CITY	CST GRAND BLVD S	2.333	PEDESTRIAN	11/23/2020	SERIOUS INJURY	2200100590	271361	DARK W/ STREET LIGHTS ON	DRY	CLEAR	68731	MON	1918		311131733	208807078	RT D
ST. LOUIS CITY	RT DE	10.549	PEDESTRIAN	11/21/2020	MINOR INJURY	2200089816	266802	DAYLIGHT	DRY	CLEAR	6131	SAT	1056		27185492	202415765	CST SHERIDAN AVE
ST. LOUIS CITY	RT DE	13.38	PEDESTRIAN	10/20/2020	SERIOUS INJURY	2200079657	271684	DARK W/ STREET LIGHTS ON	WET	CLOUDY	6131	TUE	2056		31129825	208801302	CST SHERIDAN AVE
ST. LOUIS CITY	CST GRAND BLVD S	2.328	PEDESTRIAN	9/27/2020	MINOR INJURY	2200071721	271361	DARK W/ STREET LIGHTS ON	WET	RAIN	68731	SUN	2023		31129143	208799270	CST PAGE BLVD
ST. LOUIS CITY	CST SPRING AVE S	1.19	PEDESTRIAN	8/27/2020	MINOR INJURY	2210064424	271086	DARK W/ STREET LIGHTS OFF	DRY	CLEAR	1007294	THU	1935		31128527	208797444	CST PAGE BLVD
ST. LOUIS CITY	RT DE	9.83	PEDALCYCLE	6/2/2020	MINOR INJURY	2200041763	264990	DAYLIGHT	DRY	CLEAR	6131	TUE	1436		23694257	196327104	CST GOODFELLOW BLVD
ST. LOUIS CITY	RT DE	9.495	PEDESTRIAN	3/8/2020	MINOR INJURY	2200019244	264099	DAYLIGHT	DRY	CLEAR	6131	SUN	1643		22442227	194564566	CST AMHERST PL
ST. LOUIS CITY	CST HODIAMONT AVE S	0.768	PEDESTRIAN	3/4/2020	MINOR INJURY	2200025780	263938	DAYLIGHT	DRY	CLEAR	73981	WED	1945		22489479	194668303	RT D
ST. LOUIS CITY	RT DE	11.102	PEDESTRIAN	2/27/2020	PROPERTY DAMAGE ONLY	2200016237	267045	DARK W/ STREET LIGHTS ON	DRY	CLEAR	6131	THU	2356	OTHER	22387580	194438707	CST KINGSHIGHWAY BLVD
ST. LOUIS CITY	RT DE	10.573	PEDESTRIAN	2/11/2020	FATAL	2200012651	266802	DAYLIGHT	DRY	CLEAR	6131	TUE	1630		29548686	206678337	CST UNION BLVD
ST. LOUIS CITY	CST CLARENDON AVE S	0.003	PEDESTRIAN	12/5/2019	MINOR INJURY	2190086679	266869	DARK W/ STREET LIGHTS OFF	DRY	CLEAR	29630	THU	1911		20910570	192150040	CST PAGE BLVD
ST. LOUIS CITY	CST TUCKER BLVD S	0.493	PEDESTRIAN	11/20/2019	SERIOUS INJURY	2190080749	274682	DAYLIGHT	DRY	CLEAR	8792	WED	608		18591979	189347943	CST DR MARTIN LUTHER KING DR
ST. LOUIS CITY	CST SKINNER PKWY S	0.011	PEDESTRIAN	11/14/2019	MINOR INJURY	2190091091	263760	DAYLIGHT	DRY	CLEAR	113900	THU	1555		20884832	192097149	RT D
ST. LOUIS CITY	RT DE	13.228	PEDALCYCLE	10/25/2019	PROPERTY DAMAGE ONLY	0190042137	271361	DAYLIGHT	DRY	CLEAR	6131	FRI	1651		31110284	208741923	CST GRAND BLVD
ST. LOUIS CITY	CST GRAND BLVD S	2.329	PEDESTRIAN	9/27/2019	FATAL	0190014679	271361	DARK W/ STREET LIGHTS ON	DRY	CLEAR	68731	FRI	1905		31107432	208734487	RT D
ST. LOUIS CITY	CST JEFFERSON AVE S	1.48	PEDESTRIAN	7/15/2019	MINOR INJURY	0190032404	273757	DAYLIGHT	DRY	CLEAR	76946	MON	705		31109268	208739299	CST DR MARTIN LUTHER KING DR
ST. LOUIS CITY	RT DE	9.447	PEDESTRIAN	2/20/2019	MINOR INJURY	0190014228	263938	DARK W/ STREET LIGHTS ON	DRY	CLEAR	6131	WED	2030		19966516	190121657	CST HODIAMONT AVE
ST. LOUIS CITY	RT DE	11.102	PEDESTRIAN	11/17/2018	MINOR INJURY	0180041320	267045	DARK W/ STREET LIGHTS ON	DRY	CLEAR	6131	SAT	1725		19965340	190118906	CST KINGSHIGHWAY BLVD
ST. LOUIS CITY	RT DE	9.449	PEDESTRIAN	9/5/2018	MINOR INJURY	0180034024	263938	DARK W/ STREET LIGHTS ON	DRY	CLEAR	6131	WED	46		19964599	190117163	CST HODIAMONT AVE
ST. LOUIS CITY	RT DE	9.447	PEDESTRIAN	3/31/2018	MINOR INJURY	0180010068	263938	DAYLIGHT	WET	CLOUDY	6131	SAT	1707		19962055	190111243	CST HODIAMONT AVE
ST. LOUIS CITY	RT DE	10.293	PEDESTRIAN	3/5/2018	MINOR INJURY	0180007458	266390	DARK W/ STREET LIGHTS ON	DRY	CLOUDY	6131	MON	1841		19961781	190110638	CST BELT AVE
ST. LOUIS CITY	RT DE	13.103	PEDESTRIAN	3/2/2018	MINOR INJURY	0180010724	271086	DARK W/ STREET LIGHTS ON	DRY	CLOUDY	6131	FRI	2300		31092559	20869728	CST SPRING AVE
ST. LOUIS CITY	CST GRAND BLVD S	2.334	PEDESTRIAN	12/7/2017	MINOR INJURY	0170058122	271361	DAYLIGHT	DRY	CLEAR	68731	THU	907		31080877	208653932	CST PAGE BLVD
ST. LOUIS CITY	RT DE	10.159	PEDESTRIAN	9/28/2017	FATAL	0170011283	0	DARK W/ STREET LIGHTS ON	DRY	CLEAR	6131	THU	2101		19955934	190097149	CST BELT AVE
ST. LOUIS CITY	CST HAMILTON AVE S	0.415	PEDESTRIAN	9/12/2017	SERIOUS INJURY	0170011217	264424	DAYLIGHT	DRY	CLOUDY	1007302	TUE	1104		4245760	166254057	CST PAGE BLVD
ST. LOUIS CITY	RT DE	11.1	PEDESTRIAN	5/28/2017	PROPERTY DAMAGE ONLY	0170036009	267045	DAYLIGHT	DRY	CLEAR	6131	SUN	1127		19958303	190102816	CST KINGSHIGHWAY BLVD

This report contains information that is protected from disclosure by federal law, 23 USC Section 409 and the Missouri Open Records Law (Sunshine Act), Section 610.021 RSMo. Please review MoDOT's policy and procedure manual on the Sunshine Act before releasing any of the information contained herein.

Attachment D – Road Safety Audit Executive Summary

Route D (PAGE BOULEVARD/MARTIN LUTHER KING DRIVE) RSA EXECUTIVE SUMMARY

PURPOSE AND NEED

MoDOT has a resurfacing project on Rte D (J6S3438) that is scheduled for FY26. As part of the resurfacing, MoDOT performed a Road Safety Audit to identify existing issues within the corridor and identify safety countermeasures that can be implemented within the scope of work of J6S3438 or in the long term.

To include possible countermeasures in the resurfacing project, this project applied for \$2m in MoDOT's SL District safety funds. The funds and suggested countermeasures were evaluated based on their cost/benefit, feasibility and expected benefits to decide which ones to implement in the project.

As part of the Road Safety Audit, MoDOT collaborated with St Louis City, since some of the proposed countermeasures involve their participation. MoDOT and St Louis City have an existing maintenance agreement for Rte D, which assigns MoDOT the responsibility of the road surface and some of its features, such as signs, pavement markings and traffic lights, while St Louis City handles the remaining features such as parking, landscaping, lighting, and City-installed signs.

EXISTING CONDITIONS

The current crash data shows the crash rate being six times above the state average. In addition to a review of the available data, MoDOT performed a field visit, conducted a focus group and held a public meeting to acquire additional information from the public about any existing issues. The main issues that came from these meetings and inspections were:

- Aggressive driving behavior
- Speeding
- Poorly maintained or non-contiguous pedestrian facilities

These in addition to other issues that were expressed by the public served as the basis for evaluating countermeasures that may be appropriate for this corridor.

PROPOSED COUNTERMEASURES

The countermeasures that were evaluated were drawn from the Federal Highway Administration (FHWA) Proven Safety Countermeasure List. Some of the countermeasures that were considered were:

- Narrowing Driving Lanes
- Lane Reduction (Road Diet)
- Raised Medians
- Curb Extensions (Bump outs)
- Pedestrian Refuge Islands
- Intersection Geometric Modifications (dedicated right & left turn lanes, roundabouts, right-in right-out)

This report contains information that is protected from disclosure by federal law, 23 USC Section 407 and the Missouri Open Records Law (Sunshine Act), Section 610.021 RSMo.

PUBLIC OUTREACH

A total of three focus groups, a public meeting and an on-street temporary safety demonstration were done to gather feedback on various topics. The three focus groups provided an opportunity for stakeholders and community leaders to provide feedback on existing conditions, potential countermeasures based on the needs and issues that were gathered in the first focus group, and a final session in which typical sections were presented for additional feedback.

The purpose of the first public meeting was to gather information from the public about the existing conditions throughout the corridor. The safety demonstration was done as a public meeting and involved using temporary elements to modify a section of Rte. D and incorporate some of the countermeasures. The public was able to drive or walk through the proposed changes and provide feedback from their experience.

LIST OF PROPOSED COUNTERMEASURES

For this corridor the following countermeasures are recommended for consideration to include in the final design. The countermeasures that are identified take into consideration factors like cost, cost to benefit ratio (B/C ratio) and crash modification factor (CMF). For countermeasures that can be implemented during the 2026 resurfacing project further investigations may be necessary. These will be done during the upcoming design phase.

Some of these countermeasures are also being noted as to why they cannot be implemented at this time (constraints). These constraints can be classified in three categories:

- Physical - major changes to the existing infrastructure relative to the scope of work are necessary for the countermeasures to be implemented
- Financial - at this time with the budget that is available for this project (STIP + Safety Funds) cannot be implemented.
- Logistical - involve the participation (partial or total) from other entities or municipalities.

Proposed Countermeasure	Plan to Include in 2026 Project?	If No, Identify Constraint (Physical, Financial, Logistical)	Additional Comments
Lane Reduction (Road Diet)	Y		Will include raised medians
Raised Medians	Y		Cutouts at select location to allow turning movements. Additional landscaping to be coordinated with St Louis City.
Curb Extensions (Bumpouts)	Y		Includes most existing and proposed crossings

This report contains information that is protected from disclosure by federal law, 23 USC Section 407 and the Missouri Open Records Law (Sunshine Act), Section 610.021 RSMo.

Pedestrian Refuge Islands	Y		On existing and proposed pedestrian crossings. Should have a minimum of 6' in length.
Dedicated Left Turn Lanes	Y		Includes new signal heads with Flashing Yellow Arrows (FYA) at signalized intersections. Unsignalized intersections may also have dedicated left turn lanes.
Roundabouts	N	Physical, Logistical	Needs additional coordination with St Louis City. Right of way may also be necessary.
Sidewalks and curb ramps	N	Logistical	St Louis City is responsible for the maintenance of sidewalks. MoDOT to work with the city to scope a city project to address sidewalks.
Right-In Right-Out	Y		Additional coordination and outreach is necessary. Warrants at the intersections are necessary.
Narrowing Driving Lanes	Y		11' through lanes. A narrower driving lane may be investigated during the next phase.
Dedicated Right Turn Lane	Y		At some signalized intersections. Signal retiming necessary.
Replace road signs	Y,N	Logistical	On resurfacing projects existing signs are assessed. Some roadway signs are the responsibility of St Louis City.
Parking lane buffer	N	Physical	May not be possible due to existing roadway width.
Remove parking spaces	Y		Limited use to allow for installation of bump outs.. Will improve sight distance.
Crosswalk visibility enhancements	Y		With a resurfacing project all pavement markings are restriped with continental crosswalks. Signs are also assessed for replacement.

This report contains information that is protected from disclosure by federal law, 23 USC Section 407 and the Missouri Open Records Law (Sunshine Act), Section 610.021 RSMo.

RRFB	Y		RRFBs are already installed along the corridor. New additional locations to be investigated during the next phase.
Lighting	N	Logistical	St Louis City is responsible for the maintenance of Lighting.
Bike Facilities	Y		The segment of Martin Luther King Dr is designated as a City Bike Route. Painted bike lanes will be evaluated along this segment. Protection for the bike paths may be considered in collaboration with St. Louis City regarding future maintenance.
Transit facilities (bus stops)	N	Logistical	St Louis City and Metro are responsible for transit facilities. MoDOT will be coordinating closely to accommodate any bus stop needs on the roadway.

This report contains information that is protected from disclosure by federal law, 23 USC Section 407 and the Missouri Open Records Law (Sunshine Act), Section 610.021 RSMo.

Attachment E – Request for Environmental
Services Submittal

Request for Environmental Services

Form#:2024-02-00747

Alternative Project Delivery Method (such as Design/Build)

Project Information

Stage: Location/Conceptual Previous RES(s): 2019-04-01075
Job Number (w/o 'J'): 6S3438 District: St. Louis County: ST. LOUIS CITY
TIP Number: Rte/Street: RT D
Letting Date: 12/01/2025 PS&E Due Date: 09/25/2025
Location: Pavement resurfacing, intersection improvements and reduce lanes from St. Louis City limits to Tucker Boulevard.
TMS Project Description - termini (no stations): Pavement resurfacing, intersection improvements and reduce lanes from St. Louis City limits to Tucker Boulevard.

These users will receive a notification when Environmental Services completes the current stage, the person who created this form as well as the person who submits it will also receive notification.

Project Manager: Alvin Nieves-Rosario - 314-370-3791 TP Designer: Stephen Georges - 314-453-5072
District Contact: Alvin Nieves-Rosario - 314-370-3791 District Contact: Stephen Georges - 314-453-5072
Contact: None selected
Date Desired: 03/22/2024 Submit Date: 02/21/2024

Desired A-Date:

Created By: Alvin Nieves-Rosario - (2/21/2024 7:49:36 AM) - 314-370-3791 Submitted By: Alvin Nieves-Rosario - (2/21/2024 12:00:00 AM) - 314-370-3791

Program Year:

Preliminary Engineering: 2025 Right of Way: N/A
Construction: 2026

Has the district documented that each location of the project has: 1. Independent utility, 2. Logical termini, and 3. Does not restrict consideration of alternatives for other reasonably foreseeable transportation improvements?: Yes No

Changes to project since last RES submittal? If yes, explain: Design/Build Alternate Technical Concepts
Yes, The pavement improvement changed from 2' joint repair to a 2.75" mill/fill.

Cumulative ROW and Easements of all locations (acres): 0

Bicycle / Pedestrian Consideration

Pedestrian facilities considered: Yes Bicycle facilities considered: Yes

Any Public Involvement planned or completed:

As part of a Road Safety Audit three focus groups and two public meetings were conducted. For the public meetings one was a temporary demonstration within the corridor. A final public meeting showing the proposed design is planned.

Project Attachments:

****NOTE: If making updates to an attachment, please use a different filename than the original.**

****The combined size of attachments in one upload must be less than 100MB**

Attachments:

 J6S3438.kmz

Required Information to be attached for each RES stage:

- **Loc/Concp.:** Location map (county map) & topographic map or aerial photo showing project limits – pre-plan sheets or other preliminary maps showing alternatives, if available
- **Prel. Plan:** Prel. Plan sheets
- **R/W:** R/W Plan sheets
- **Final Design:** Final Plans [Location map (county map) & topographic map or aerial photo showing project limits if this is first RES submittal

Locations for this Request

Location Information

Location Name: _____ Previous Location: 5183 -

Describe RES project improvements in full detail: Pavement Improvement - 2.75" mill/fill

Project breakout from previous or larger project? *If checked explain:*

Stage: Location/Conceptual County: ST. LOUIS CITY

TMS Project Description - termini (no stations): Pavement resurfacing, intersection improvements and reduce lanes from St. Louis City limits to Tucker Boulevard.

Acres - From all sources (e.g. donated from public or private entities):

Additional R/W (acres): 0 **Temp Easement (acres):** 0 **Permanent Easement (acres):** 0

ROW may be needed, but, not yet determined? No

Is ANY Federally-owned land impacted by the project? Yes No

Acres of Tree Clearing: 0 acres
DO NOT CLEAR TREES W/O MODOT'S PRIOR WRITTEN APPROVAL.

Land Disturbance / Stormwater:

Will project involve 1 acre of land disturbance: Yes No Unknown

Define project type (see definitions below): New Development Redevelopment Maintenance

Projects with one acre or greater land disturbance activities must comply with the Land Disturbance Permit requirements.

New Development - Projects (with land disturbance greater than or equal to 1 acre) that are constructed where there was previously no transportation facility.

Redevelopment - Non-maintenance work performed to or on an existing public transportation facility which provides for an increased number of thru lanes of travel unless the work can be accommodated without increasing the width of the existing pavement. Widening of an existing road that does not result in an additional thru lane does not constitute redevelopment. Widening to add shoulders does not constitute a thru lane unless the total widening is greater than or equal to 10 feet.

Maintenance - Projects that do not meet the criteria of redevelopment or new development.

Was coordination with local counties or cities conducted? Yes No

If yes, please provide a short description of the coordination: As part of the Road Safety Audit the City of St Louis was involved.

Number of Displacements(do not include partial takes that do not displace):

Residential: Yes No Commercial: Yes No
No. of People: Residences: No. of Employees: Businesses:

Average Daily Traffic:

ADT Construction Year: 9548 ADT Design Year: 10550

Traffic Impacts:

Road Closure Planned: Yes No Bridge Closure Planned: Yes No
Days/Months Closed: Detour > 25 mi rural (including local roads) Yes No
Detour > 5 mi urban (including local roads, census defined urban) Yes No

Detour Info (including use of local roads):

National Flood Insurance Program (NFIP) and Hydraulic Design Data:

- Project involves land purchased through FEMA Hazard Mitigation Grant Program (Flood buyout property)
If checked, give details:
- Is highway improvement located within 4 miles of an existing airport?

Known Concerns: Provide information you have about these resources that you have observed in the area.

Parkland: Unknown
Wetland/404 Permit: Unknown
Land Disturbance / Stormwater: Unknown
Farmland: Unknown
Threatened & Endangered Species: Unknown
Migratory Birds: Are there birds nesting on the structure? Unknown,
Hazardous Waste: Unknown
Cultural Resources: Unknown

District Comments:

Location Attachments:

****NOTE: If making updates to an attachment, please use a different filename than the original.**

****The combined size of attachments in one upload must be less than 100MB**

Attachments:

Required Information to be attached for each RES stage:

- **Loc/Concp.:** Location map (county map) & topographic map or aerial photo showing project limits – pre-plan sheets or other preliminary maps showing alternatives, if available
- **Prel. Plan:** Prel. Plan sheets
- **R/W:** R/W Plan sheets
- **Final Design:** Final Plans [Location map (county map) & topographic map or aerial photo showing project limits if this is first RES submittal

RES Environmental Screenings

Farmland Impact

Status Information: Status Changed By: Samantha Sawyer N/A Pending Cleared Clearance Date:

Environmental Response: The project is urban St. Louis and does not require new right of way or permanent easements. There is no potential for conversion of farmland. Therefore, the project is not subject to the Farmland Protection Policy Act.

Environmental Action: None

District Action: None

Commitments: None

Attachments:

- Farmland Impact Submitted - Mark submitted when this review is ready to be sent to district staff.
Last Updated: Samantha Sawyer - 3/15/2024 10:23:05 AM

Floodplain/Regulatory Floodway

Status Information: Status Changed By: Samantha Sawyer N/A Pending Cleared Clearance Date:

Environmental Response: According to current FEMA floodplain mapping, there are no areas of 100-year floodplain or regulatory floodway within the project limits. No floodplain permitting requirements for this project.

Environmental Action: None

District Action: None

Commitments: None

Attachments:

- Floodplain/Regulatory Floodway Submitted - Mark submitted when this review is ready to be sent to district staff.
Last Updated: Samantha Sawyer - 3/15/2024 10:24:48 AM

Land Disturbance / Stormwater

Status Information: Status Changed By: Chris Shulse / Caitie Wiechman N/A Pending Cleared Clearance Date:

Environmental Response: The project is inside the TS4 area but doesn't meet the 1 acre threshold to consider BMPs.

Environmental Action: None

District Action: None

Commitments: None

TS4 Area: Yes No Partial Is the project in a TMDL watershed? Yes No

Attachments:

- Land Disturbance / Stormwater Submitted - Mark submitted when this review is ready to be sent to district staff.
Last Updated: Caitlin Wiechman - 3/14/2024 2:42:23 PM

►FEMA/SEMA Buyout

Status Information: Status Changed By: Samantha Sawyer N/A Pending Cleared Clearance Date:

Environmental Response: The project does not involve any property acquisition with no potential to impact buyout sites.

Environmental Action: None

District Action: None

Commitments: None

Attachments:

- FEMA/SEMA Buyout Submitted - *Mark submitted when this review is ready to be sent to district staff.*
Last Updated: Samantha Sawyer - 3/15/2024 10:24:13 AM

►Socioeconomic Impact

Status Information: Status Changed By: Jo Dent / Caitie Wiechman N/A Pending Cleared Comment Date:

Environmental Response: UPDATE (3/14/24): As part of a Road Safety Audit three focus groups and two public meetings were conducted. One of the completed public meetings was a temporary demonstration within the project corridor. A final public meeting showing the proposed design is planned for the future. UPDATE (5/11/23): The district released the public notice for this project on May 11, 2023. This notice has been attached. INITIAL SCREENING: The project does not require displacements or property acquisitions. Road closures and detours will not be necessary. There will be no significant socioeconomic impacts as a result of this project. Impacts will be temporary and limited to traffic disruptions, construction noise, and fugitive dust and emissions in the area of project construction.

Environmental Action: Continue to assess impacts when more information about the public meetings area known.

District Action: Please provide additional information regarding the public meetings that have been held for this project. This information should include (for each meeting) the dates, locations, how the public was informed of each meeting, attendance sheets, comment forms, comments received, district responses to comments, and copies of all public involvement documents (social media posts, comment sheets, displays, etc.).

Commitments:

Attachments:

✘PRE-FW_MoDOT holds public meeting to discuss Route D in city of St. Louis TODAY.pdf

- Socioeconomic Impact Submitted - *Mark submitted when this review is ready to be sent to district staff.*
Last Updated: Caitlin Wiechman - 3/14/2024 2:41:55 PM

►Threatened & Endangered Species

Status Information: Status Changed By: Chris Shulse No Effect Pending Cleared Clearance Date:

Environmental Response: Consultation Code: 03E14000-2019-SLI-1253 April 09, 2019 Endangered Species Act Species List: Indiana and Northern Long-eared bats. The listed bat species roost in caves and mines in the winter and in suitable trees during the summer. No tree clearing is associated with this project and there are no caves or mines in the immediate project area according to the MSS Cave Database (April 2019). There are some caves north and south of the project area but these are highly disturbed or destroyed and none contain records for listed species. The MDC Heritage Database (April 2019) shows no records for other listed species in the project area. MoDOT has determined that this project will have no effect on T&E species.

Environmental Action: None

District Action: None

Commitments:

Attachments:

✘PRE-Official_Species_List_6S3438.pdf

- Threatened & Endangered Species Submitted - *Mark submitted when this review is ready to be sent to district staff.*
Last Updated: Amy Clifton - 3/11/2024 10:30:12 AM

► Migratory Birds

Status Information: Status Changed By: Chris Shulse N/A Pending Cleared Clearance Date:

Environmental Response: Based on the scope of work described, this project will not result in take of migratory birds.

Environmental Action: None

District Action: None

Commitments:

Attachments:

Migratory Birds Submitted - Mark submitted when this review is ready to be sent to district staff.
Last Updated: Amy Clifton - 3/11/2024 10:30:26 AM

► Hazardous Waste Impact

Status Information: Status Changed By: Andy Stivers N/A Pending Cleared Clearance Date: 02/21/2024

Environmental Response: Based on project description and no new ROW required, there should be no hazardous waste site concerns. The potential to encounter wastes from sites unknown to MoDOT, should always be a consideration. Any unknown sites that are found during project construction will be handled in accordance with Federal and State Laws and Regulations.

Environmental Action: None

District Action: If a hazardous waste site is encountered during the project, contact Andy Stivers, Hazardous Waste Specialist at (573) 526-3599.

Commitments: If a hazardous waste site is encountered during the project, contact Andy Stivers, Hazardous Waste Specialist at (573) 526-3599.

Attachments:

Hazardous Waste Impact Submitted - Mark submitted when this review is ready to be sent to district staff.
Last Updated: Andrew Stivers - 2/21/2024 9:19:03 AM

► Wetland Impact (Section 404/401)

Status Information: Status Changed By: Evan Hill N/A Pending Cleared Clearance Date:

Environmental Response: These project activities will not result in impacts to streams or wetlands. No permit needed.

Environmental Action: none

District Action: none

Commitments:

Wetland Permit Information:	404 Permit Number	Permit Submitted	Permit Received
	Permit Expiration	Compliance Certification Sent	Compliance Certification Received

Attachments:

Wetland Impact Submitted - Mark submitted when this review is ready to be sent to district staff.
Last Updated: Amy Clifton - 3/11/2024 10:30:42 AM

▶ Noise Impact

Status Information:

Status Changed By:

N/A Pending Cleared

Clearance Date:

Environmental Response: This project's improvements do not meet the criteria of a Type I project, therefore is categorized as a Type III which does not require a noise analysis.

Environmental Action: None

District Action: None

Commitments:

Attachments:

Noise Impact Submitted - *Mark submitted when this review is ready to be sent to district staff.*

Last Updated: Ethan Musick - 2/23/2024 9:44:11 AM

▶ Cultural Resources Impact (Section 106/Historic 4f)

Status Information:

Pending Cleared ROW Cleared

Status Changed By:

Clearance Date:

A Date Cleared:

Vince Warner

04/08/2019

Environmental Action: Based upon the information provided, this project is considered to be exempt from Section 106 review under Section 4.5 of the Missouri Programmatic Agreement for Minor Highway Projects.

District Action: Since nothing will be submitted to the SHPO, 4/8/2019 may be used to identify Cultural Resources as cleared. Be advised that if changes are made to the project (including but not limited to the addition of new right of way or easements, or the changing of the scope) the project will need to be reevaluated and additional clearances may be required.

Commitments:

Attachments:

Adverse Effect or Conditional No Adverse Effect

Based on the review of the project location and description noted above, there are no identified historic 4(f) resources affected that would preclude the setting of an A-date.

Checked by: on Approved on:

Cultural Resources Impact Submitted - *Mark submitted when this review is ready to be sent to district staff.*

Last Updated: Vincent Warner - 3/18/2024 9:24:17 AM

▶ Public Land Impact (Section 4f/6f)

Status Information:

Status Changed By:

N/A Pending Cleared

Clearance Date:

Environmental Response: The project does not require new right of way or easements from and will not restrict access to any Section 4(f) or Section 6(f) resources. No impacts to public recreational lands.

Environmental Action: None

District Action: None

Commitments: None

Attachments:

Based on the review of the project location and description noted above, there are no identified 4(f) or 6(f) resources affected that would preclude the setting of an A-date.

Checked by: on

Public Land Impact Submitted - *Mark submitted when this review is ready to be sent to district staff.*

Last Updated: Caitlin Wiechman - 3/14/2024 2:37:31 PM

Other

Status Information: N/A Pending Cleared Clearance Date:

Environmental Response: There are no additional resource impacts associated with this project.

District Action: none

Commitments:

Attachments:

Other Screening Submitted - Mark submitted when this review is ready to be sent to district staff.

Last Updated: Brittany Rogers - 2/21/2024 9:18:10 AM

All Commitments

FEMABuyout: None

Farmland Impact: None

Floodplain: None

Hazardous Waste Impact: If a hazardous waste site is encountered during the project, contact Andy Stivers, Hazardous Waste Specialist at (573) 526-3599.

Public Land Impact: None

Stormwater: None

NEPA Classification

NEPA Right-Of-Way Permission: Not Applicable as determined or approved by: Melissa.Scheperle@modot.mo.gov

NEPA Approval/Proceed to A-date Request: 04/25/2019 Re-evaluation Date: Final Review Complete:

NEPA Classification: PCE

This project qualifies for the programmatic categorical exclusion under Item#: 26 All Environmental Issues Cleared:

Commitments and/or Comments to District:

Attach NEPA File(s): No file chosen

Attachments:

Attachments will be saved when you click the save button

Last Submitted: Unsubmitted