

The MoDOT Aviation Section would like to thank Missouri airports, passengers, airport users, tenants, and stakeholders for their valuable input and participation on this project.



Like us on Facebook:
[facebook.com/MoDOTStatewide](https://www.facebook.com/MoDOTStatewide)



Follow us on Twitter:
twitter.com/modot



Check out our blog:
modotblog.blogspot.com



Check out our news feed:
modot.com/xml/Statewide.xml



MoDOT Aviation Section

105 West Capitol Avenue
P.O. Box 270
Jefferson City, MO 65102
(573) 751-2589
aviation@modot.mo.gov

IRK | Kirksville Regional Airport Kirksville, MO



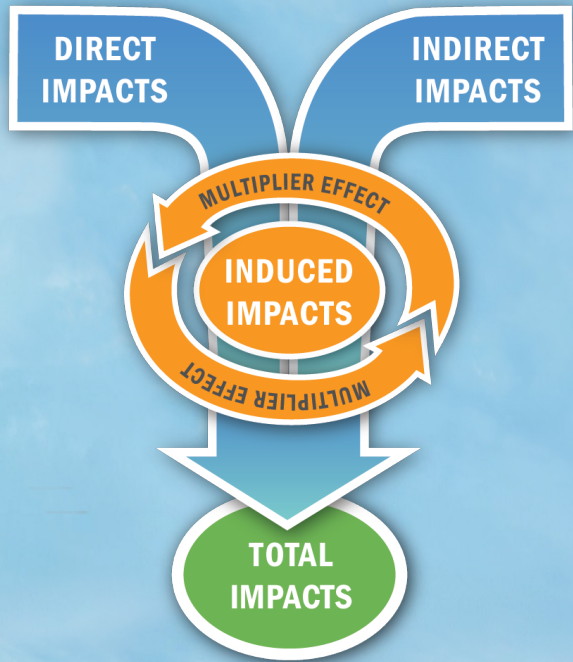
Missouri Statewide Airports Economic Impact Study

- Missouri is served by **nine** commercial service airports in the state and **99** publicly owned, public use general aviation airports.
- Missouri's commercial service airports enplaned nearly **12 million** passengers in 2012.
- Missouri supported approximately **264,000** general aviation visitors at airports in 2012.
- Airports in Missouri support more than **420** on-airport aviation related businesses.
- More than **\$130 million** was invested in the state's airports in 2012 through updates and renovations.
- Missouri airports support **11** scheduled commercial airlines throughout the state.
- More than **195,000** tons of cargo are transported by air in Missouri each year.



Prepared by: Landrum & Brown, Incorporated | 2013





Economic Impact Study

Missouri's airport system is not only a means of safe and efficient transportation, but also provides over 100,000 jobs and accounts for more than \$10 billion in total economic activity. Each of the airports in Missouri has a specific impact on its local community that goes far beyond the local level to serve as a catalyst for economic growth.

STUDY PROCESS

Similar to the 2002 Missouri economic analysis, the economic impact generated by Missouri's airports is quantified in terms of direct, indirect, and induced economic activity and spending.

Direct impacts are based on the employment, wages, and sales generated by on-airport business activity. Common direct impacts stem from tenants like fixed-base operators (FBOs) or aircraft maintenance operations.

Indirect impacts arise from visitors arriving by aircraft and their spending on food, hotels, entertainment, transportation, and other activities. These expenditures support additional jobs, wages, and output.

Induced impacts, also referred to as multiplier impacts, are created through the "spin-off" effect of users purchasing goods and services from other local businesses and through workers spending wages and other income for household goods and services. For example, when an airport employee is paid, he or she uses their salary to purchase local goods and services at businesses in the area, which in turn spend their revenue locally, thus generating additional economic activity in the region.

Combined, the direct, indirect and induced impacts determine the total economic impacts for each airport and the statewide airport system.

IMPACT MEASURES

Jobs represent the number of people who are employed and are presented as full-time equivalent jobs.

Payroll represents the total annual wages, salaries, and benefits paid to all workers.

Output measures the value of goods, services and capital expenditures.

TOTAL JOBS	100,621
TOTAL PAYROLL	\$3,128,646,000
TOTAL OUTPUT	\$11,101,699,000



Kirksville Regional Airport

TOTAL JOBS
56

TOTAL PAYROLL
\$2,029,000

TOTAL OUTPUT
\$6,139,000

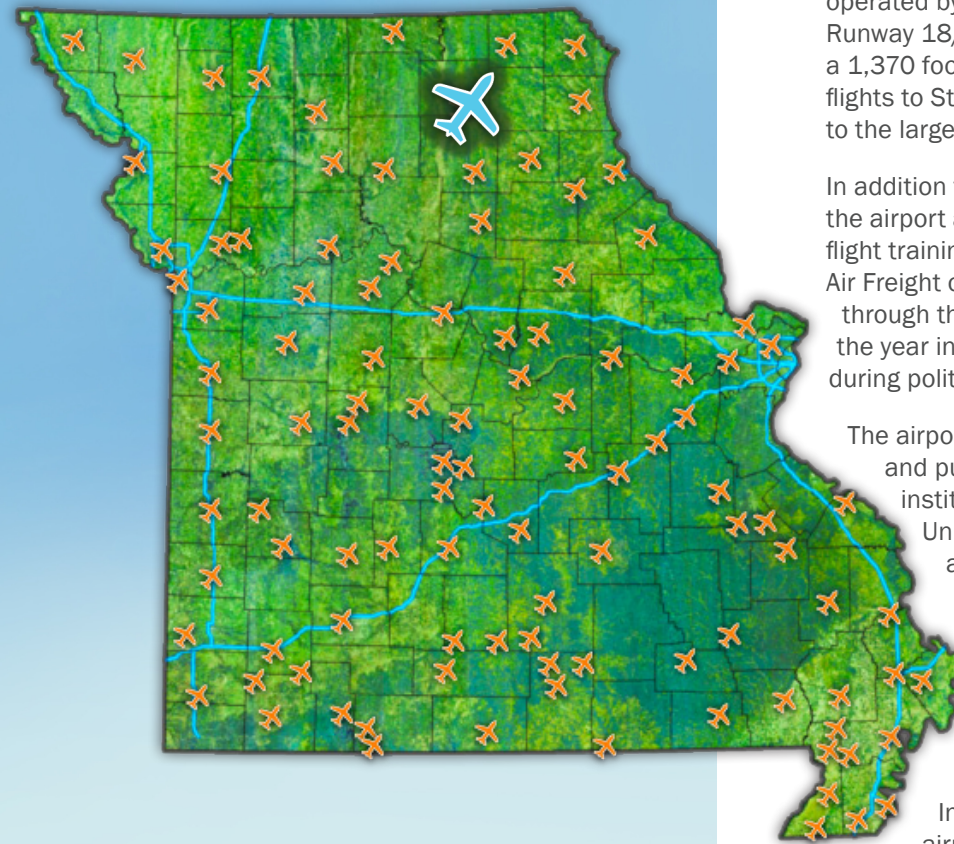
BENEFITS OF THE AIRPORT

Kirksville Regional Airport is a commercial service airport located in northern Missouri, four miles south of Kirksville on the west side of US Highway 63. The airport is owned and operated by the City of Kirksville. The airport has two runways, Runway 18/36 which is 6,005 feet long, and Runway 09/27, a 1,370 foot long grass landing strip. Cape Air provides daily flights to St. Louis for residents and visitors, affording access to the larger international airport system.

In addition to serving commercial airline passenger activity, the airport also accommodates corporate flying, air cargo, flight training, aerial inspections, and recreational flying. UPS Air Freight operates daily at the airport, transporting cargo through the region. Aerial advertising also occurs throughout the year in conjunction with local university events, as well as during political elections.

The airport serves as a gateway to hunters visiting private and public wildlife reserves. Visitors to higher education institutes such as Truman State University and A.T. Still University utilize the airport on a regular basis. The airport also supports military exercises, agricultural spraying, aerial photography, and aerial advertising. The airport serves as a staging area for community events and meetings, working closely with the local chamber of commerce to host after hour's events and an annual fall airshow which draws more than 4,000 people.

In addition to Cape Air's commercial service, the airport is home to several robust aviation businesses. Examples include PFH Aviation, Onshore Technologies, and Air Excel. In addition to these businesses, the FAA and TSA also are located at the airport. Kraft Foods, Woods Flying Service, and POET which produces ethanol products are companies who rely on the airport to transport staff, equipment, and goods in and out of the region. Emergency medical evacuation and transportation companies along with medical doctor transports affiliated with local hospitals including Children's Mercy Hospital utilize the airport.



Statewide Economic Impacts

