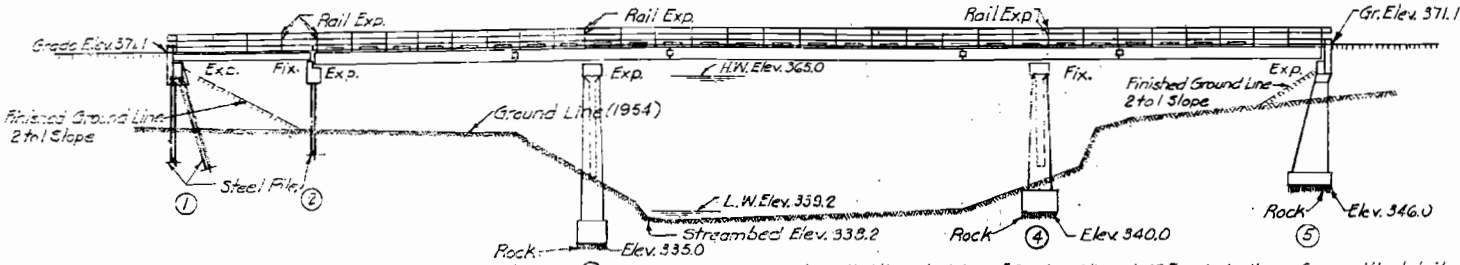


MISSOURI STATE HIGHWAY DEPARTMENT

FED. ROAD DIST. NO.	STATE	FED. AID PROJ. NO.	FISCAL YEAR	SHEET NO.	TOTAL SHEETS
5	MO.	S-733 (7) (SC)	19		

25' (50'-80'-50' Cont.) I-Bm. Spans



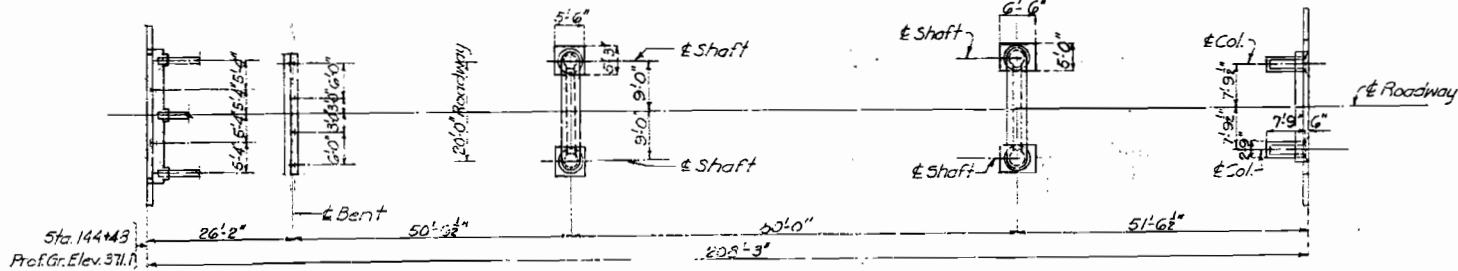
Note: All loose, shelly or disintegrated rock shall be removed and the footings placed on here, solid, undisturbed rock. If soft rock or shale is encountered, the footings shall be carried at least 18" into and cast against vertical faces of same.

Note: In no case shall footings of Piers 3 & 4 be placed higher than Elevations shown on plans.

Note: All piling shall be 10" Bearing Piles at 42" and shall conform with details and notes on sheet No. 2 of design plans. Estimated quantities shown on plans are based on the following lengths: 5@50'-0" and 4@45'-0". These indicated lengths are approximate only. Proper lengths to give required bearing and for penetration will be authorized by the Engineer.

All piles shall be driven to or into solid rock, boulders, shale, or cemented gravel; or to not less than full length authorized and sustain a load of at least 30 ton per pile.

A gravity hammer may be used for driving if desired.



PLAN

GENERAL NOTES

Design Specifications: A.A.S.H.O.-1953

Loading: H10-44

Structural Steel Stress 18,000 psi

Reinforcing Steel Stress 10,000 psi

Concrete Class "B" Stress 1,000 psi

All concrete shall be Class "B"

Rivets 3/4"; holes 1/2", except where otherwise noted.

Field connections shall be riveted except as noted in handrail details or if the Contractor desires to eliminate all field riveting on this project he may use high tensile steel bolts with carburized washers for the expansion device and the beam splices in the continuous spans and American Standard Regular machine bolts for other field connections except for the 3/4" button head bolts specified for handrail. See Special Provisions.

Paint: Shop, none; Field, contact surfaces of bolted field connections (except where high tensile bolts are used) one coat of red lead and surfaces inaccessible after erection three coats of red lead. No other paint to be applied by Contractor except as noted for steel piles. Red lead required shall be furnished by Contractor. Payment for cleaning and painting such surfaces will be included in unit price bid for fabricated Structural Steel.

Where joint filler is specified on the plans it shall conform with the requirements for Premoulded Material for Filler as given in Section 35-13.4 (1) of the Standard Specifications.

All beams over 65 feet in length shall be shipped by rail to the specified shipping point.

Surfaces of piles at Bent No. 1 from bottom of concrete cap to 3'-0" below present ground line shall be painted with one coat of an approved brand of emulsified asphalt paint. Payment for excavating around piles below present ground line and backfilling same, furnishing emulsified asphalt paint and cleaning and painting steel surfaces specified will be included in the unit price bid for other items.

For requirements on welding electrodes see Special Provisions. Qualification of welding operators will be required.

COMPLETE BILL OF REINFORCING STEEL

No.	Size	Length	Mark	Location	Bending Sketches & Cutting Diagrams	No.	Size	Length	Mark	Location	Bending Sketches & Cutting Diagrams	No.	Size	Length	Mark	Location	Bending Sketches & Cutting Diagrams
Superstructure						Intermediate Bent No. 2						End Bent No. 5 (Cont'd)					
29	#5	2'-9"	C1	Curb		4	#6	21'-3"	G1	Beam		2	#6	20'-0"	H7	Beam	
6	#5	25'-9"	C2	..		6	#6	23'-3"	G2	Bm3 Hch.		3	#9	20'-0"	H8	..	
12	#6	26'-3"	C3	..		6	#4	3'-3"	U2	Beam		2	#6	22'-3"	H9	..	
18	#6	28'-0"	C4	..		22	#5	4'-3"	U6	Hch.		3	#5	9'-0"	H10	Wing	
12	#6	26'-9"	C5	..		44	#4	6'-0"	U7	..		3	#5	16'-3"	H11	..	
416	#4	22'-0"	S1	Slab		6	#4	2'-0"	U8	..		2	#4	20'-0"	H12	Beam	
208	#4	24'-0"	S2	..		Piers No. 3 & 4						4	#6	11'-3"	T3	Wing	
32	#4	25'-9"	S3	..		16	#8	13'-6"	D2	Fig. 2-3		20	#4	9'-0"	U9	Beam	
224	#4	27'-3"	S4	..		16	#8	8'-6"	D3	..		4	#4	3'-0"	U10	..	
30	#4	16'-0"	S5	..		4	#6	20'-6"	H13	Cap		44	#4	4'-3"	V5	BA Wall	
End Bent No. 1						8	#7	18'-0"	H14	..		2	#4	5'-3"	V6	Wing	
2	#6	22'-3"	H1	Bk Wall		36	#4	17'-9"	H15	Web		6	#4	8'-3"	V7	..	
8	#6	26'-0"	H2	Bm.		3	#8	19'-9"	H16	..		2	#6	19'-6"	V8	Col.	
4	#6	24'-0"	H3	..		32	#4	19'-6"	P2	Web		6	#6	20'-3"	V9	..	
6	#6	6'-0"	H4	Wing		32	#3	19'-6"	P3	Shaft		32	#3	12'-6"	V10	..	
2	#6	4'-6"	H5	..		38	#6	6'-3"	D11	Cap		8	#4	17'-6"	V11	..	
4	#6	9'-3"	T1	Wing		34	#5	6'-9"	U12	..		End Bent No. 5					
4	#6	8'-0"	T2	..		4	#6	5'-3"	U13	..		4	#6	4'-9"	D1	Footings	
48	#4	7'-0"	U1	Beam		12	#4	4'-3"	U14	..		6	#6	7'-0"	F1	Col. Hch.	
8	#4	3'-3"	U2	..		4	#4	4'-0"	U15	..		6	#6	7'-0"	F2	..	
24	#7	7'-9"	U3	Buttress	36	#5	7'-9"	U16	..	End Bent No. 5							
6	#7	7'-0"	U4	..	End Bent No. 5						End Bent No. 5						
6	#7	6'-9"	U5	..	End Bent No. 5						End Bent No. 5						
24	#4	2'-9"	V1	Bk Wall	End Bent No. 5						End Bent No. 5						
2	#4	6'-5"	V2	Wing	End Bent No. 5						End Bent No. 5						
4	#4	8'-9"	V3	..	End Bent No. 5						End Bent No. 5						
12	#4	3'-9"	V4	Buttress	End Bent No. 5						End Bent No. 5						

ESTIMATED QUANTITIES			
Item	Substr.	Superstr.	Total
Class 1 Excavation for Structures	Cu Yds. 180		180
Class 2 Excavation for Structures	Cu Yds. 25		25
Class "B" Concrete	Cu Yds. 188.2	1	228.5
Fabricated Structural Steel	Lbs. 9,709	106,320	107,230
Steel Castings	Lbs. 2740		2740
Gray Iron Alloy Castings	Lbs. 480		480
Reinforcing Steel	Lbs. 9,709	17,120	26,820
Steel Piles in Place	Lin. Ft. 403		403
Steel Piles Cut-offs	Lin. Ft. 27		27

Note: Excavation for bridge made above Elev. 340.0 will be paid for as Class 1 Excavation for Structures. Excavation for bridge made below Elev. 340.0 will be paid for as Class 2 Excavation for Structures. Estimated weight of fabricated Structural Steel in substructure consists of weight of angles required for steel pile bents.

B.M. 15 Elev. 363.12 Spike in Telephone Pole 98' E. of Sta. 144+25.

BRIDGE OVER APPLE CREEK

STATE ROAD FROM ALTENBURG SOUTH TO CAPE GIRARDEAU CO. LINE ABOUT 6.7 MILES S.W. OF WITTENBURG

PROJECT NO. S-733 (7) (SC) STA. 144+48

PERRY COUNTY

DESIGNED BY J. A. Williams DATE 2/23/55  
APPROVED BY M. Whitton DATE 2/23/55

FINISHED

FINISHED

STD. CH. 103

P-303

Drawn Feb. 1955 by B.R.G.  
Checked Feb. 1955 by C.S.A. & R.M.L.

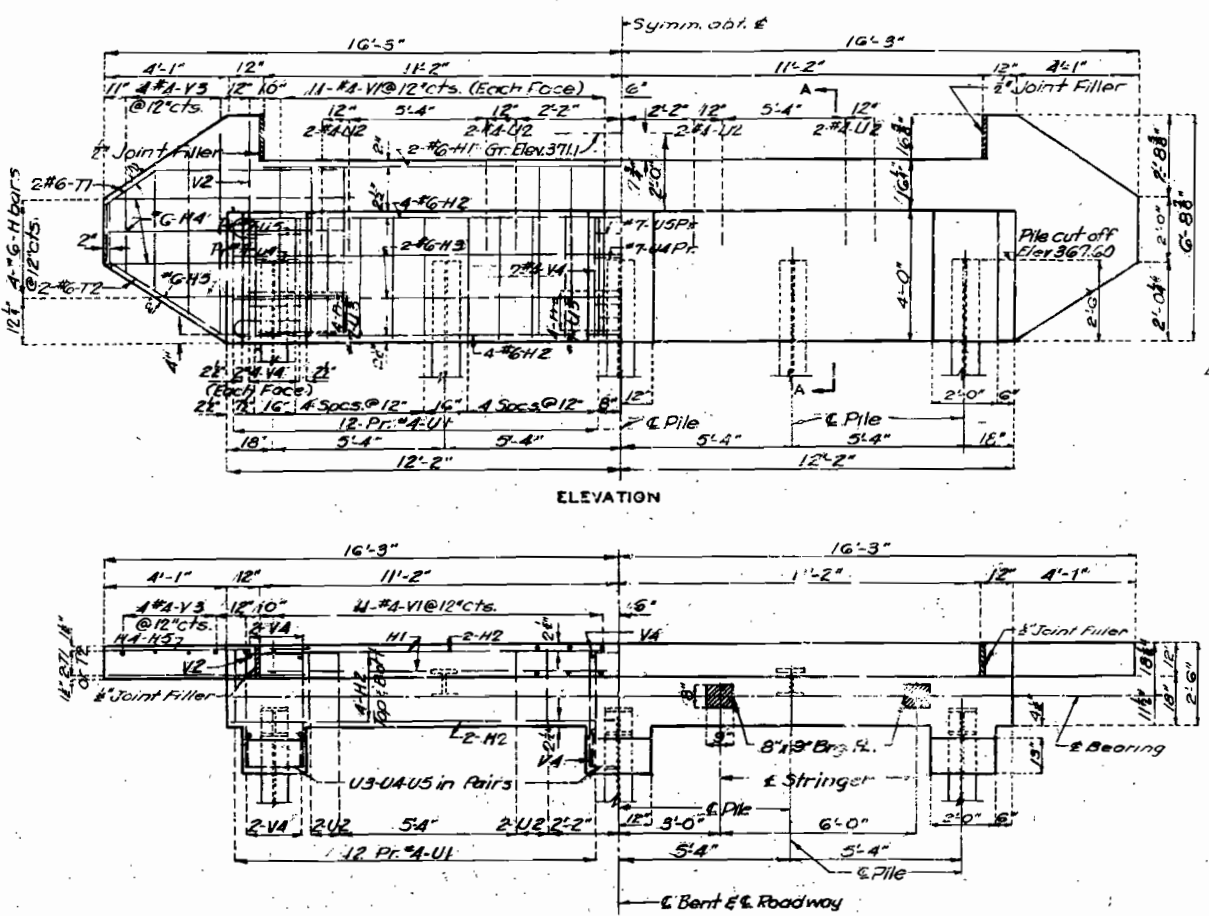
Note: This drawing is not to scale. Follow dimensions.

Sheet No. 1 of 3.

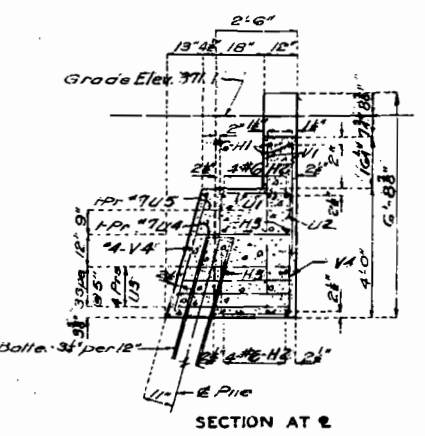


MISSOURI STATE HIGHWAY DEPARTMENT

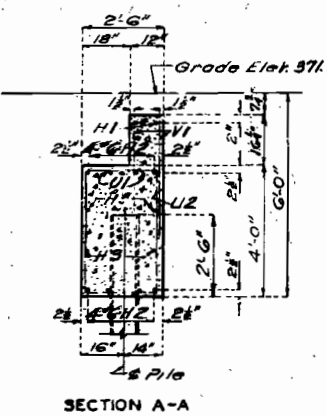
FED. ROAD DIST. NO.	STATE	FED. AID PROJ. NO.	FISCAL YEAR	SHEET NO.	TOTAL SHEETS
5	MO	5-733(2)	1952	19	



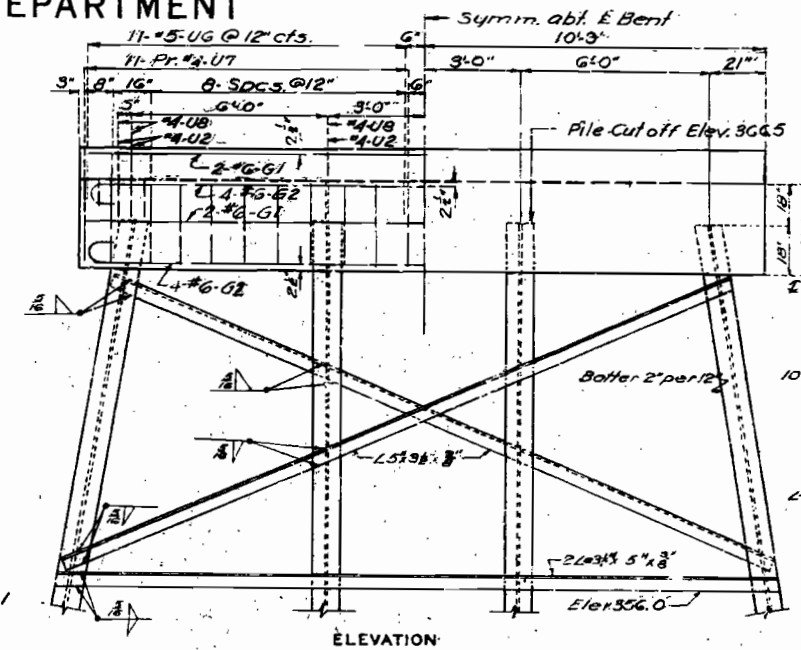
DETAILS OF END BENT NO. 1



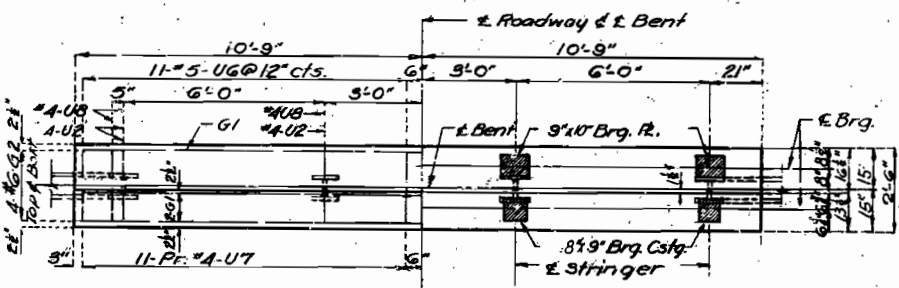
SECTION AT E



SECTION A-A

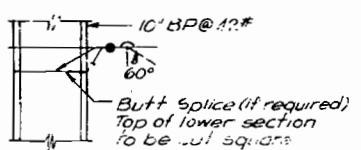


ELEVATION



PLAN

DETAILS OF INTERMEDIATE BENT NO. 2



BRIDGE OVER ALLEN CREEK

STATE ROAD FROM ALLENBURG SOUTH TO CAPE GIRARDEAU CO. LINE  
ABOUT 6.7 MILES S.W. OF WITTENBURG  
PROJECT NO. 5-733(2) (SC) STA. 144+48

PERRY COUNTY

FINISHED

Assembled Jan. 1955 by W.E.S. & J.H.K.  
Checked Feb. 1955 by C.S.A.

Note: This drawing is not to scale, Follow Dimensions

Sheet No. 2 of 8

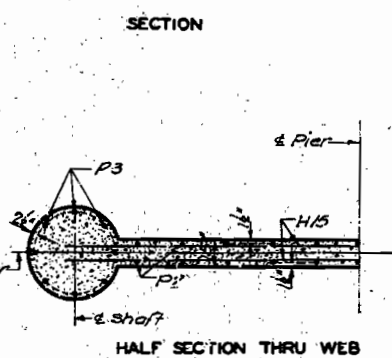
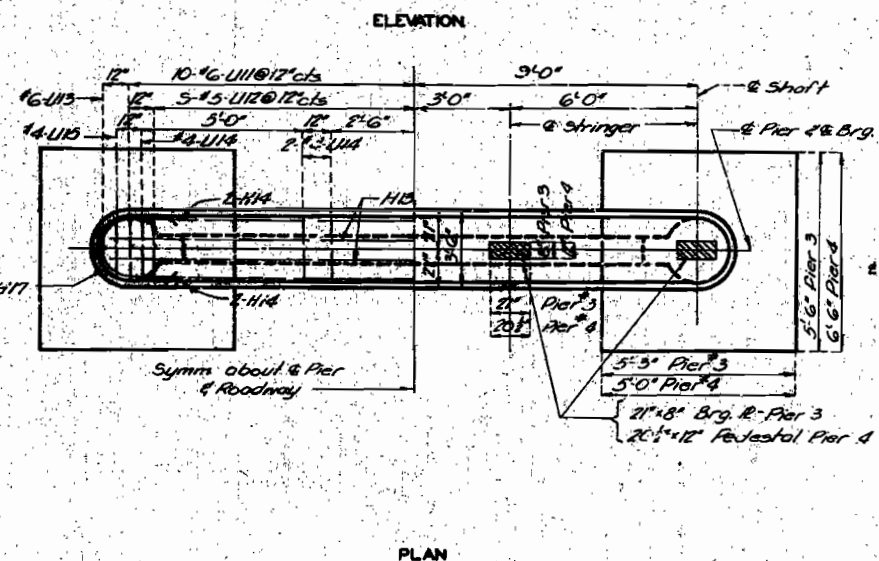
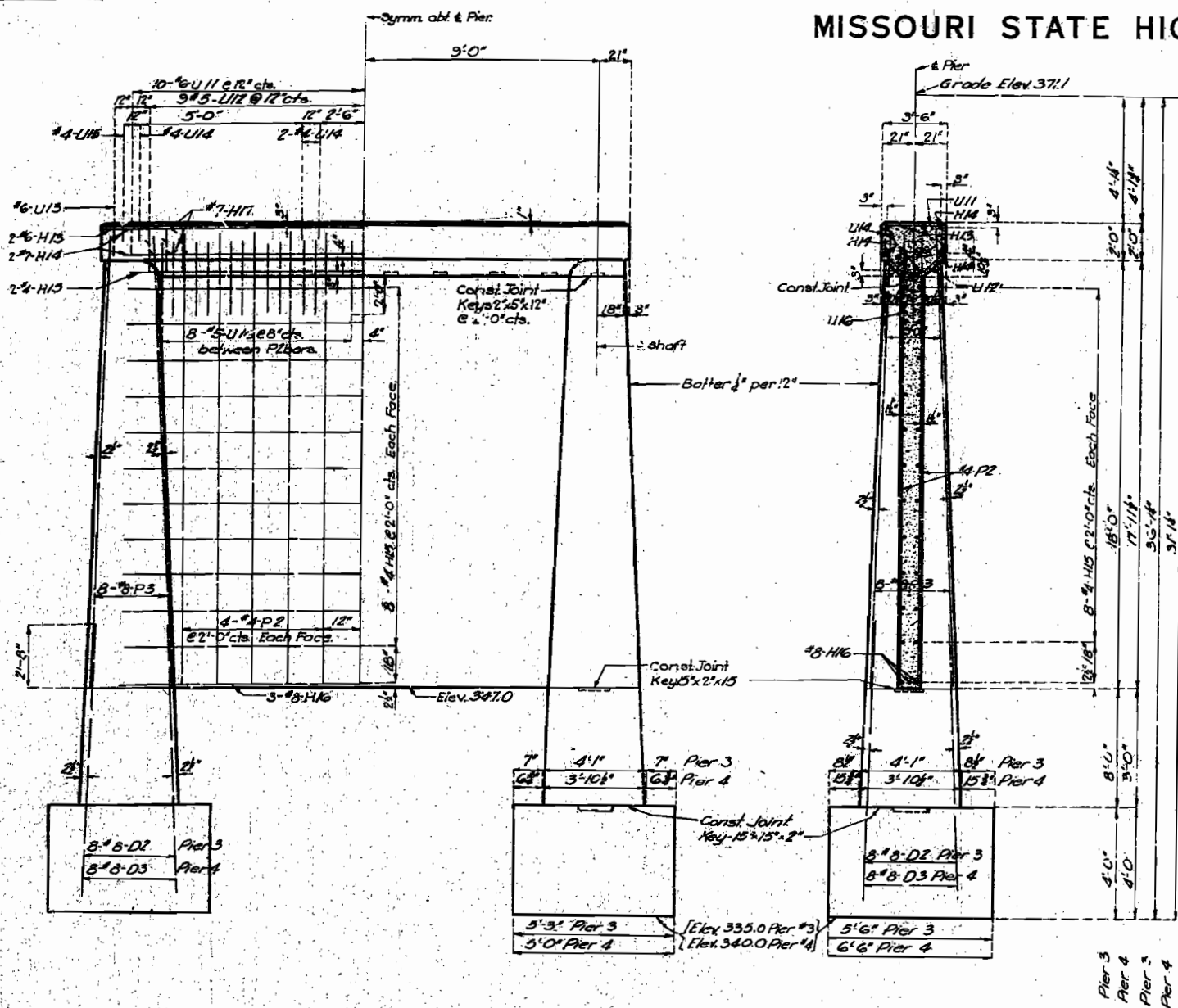
P-803

89



# MISSOURI STATE HIGHWAY DEPARTMENT

FED. ROAD DIST. NO.	STATE	FED. AID PROJ. NO.	FISCAL YEAR	SHEET NO.	TOTAL SHEETS
5	MO.	5-733(2) (SC)	19		



DETAILS OF PIERS NO. 3 & 4

Note: This drawing is not to scale. Follow dimensions.

## BRIDGE OVER APPLE CREEK

STATE ROAD FROM ALTENBURG SOUTH TO CAPE GIRARDEAU CO. LINE.

ABOUT 6.7 MILES S.W. OF WITTENBURG

PROJECT NO. S-733(2) (SC) STA. 144+48

PERRY

COUNTY

FINISHED

FINISHED

Assembled Jan. 1955 by M.E.S. & S.M.S.  
Checked Feb. 1955 by C.S.A.

Sheet No. 3 of 3.

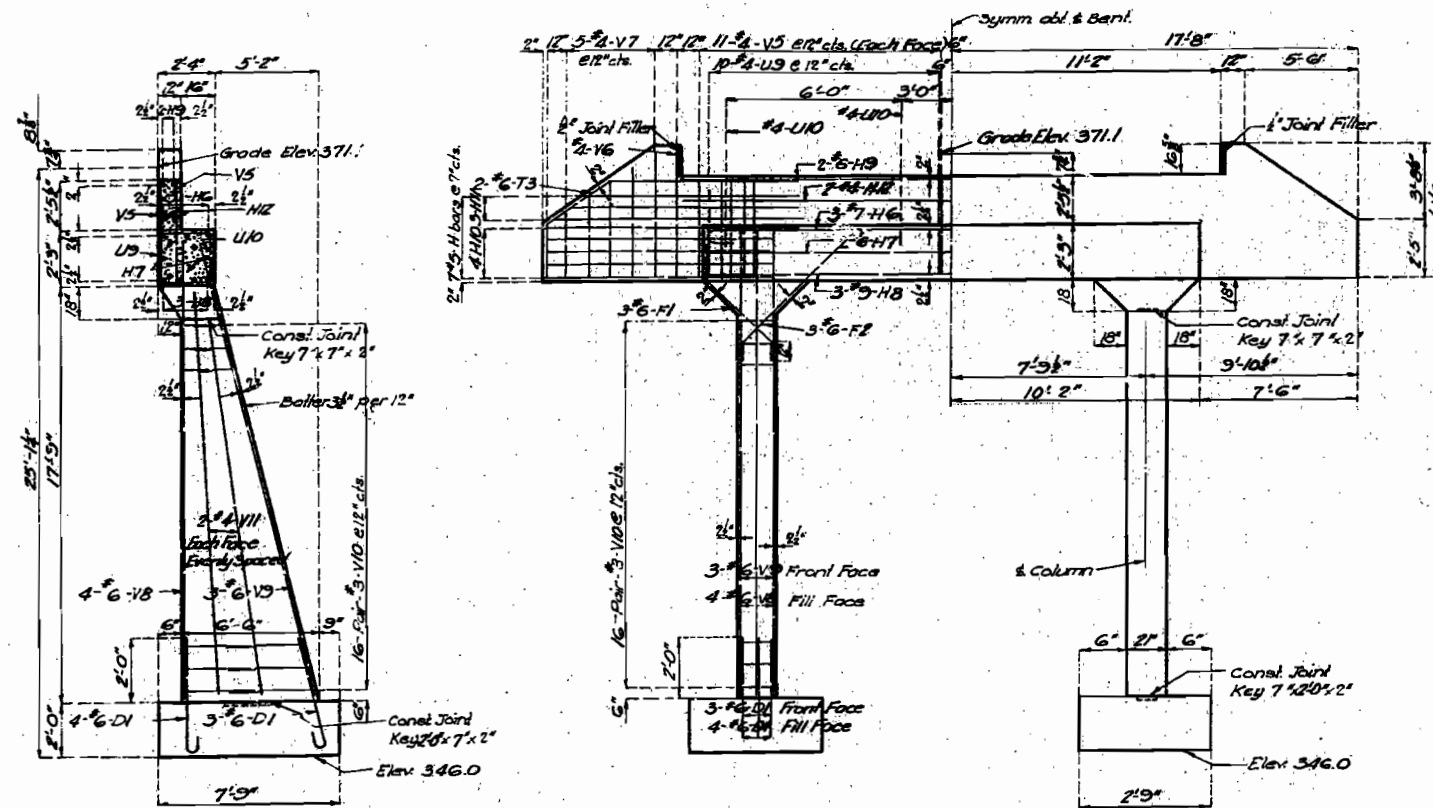
P-803

2-shaft Pier

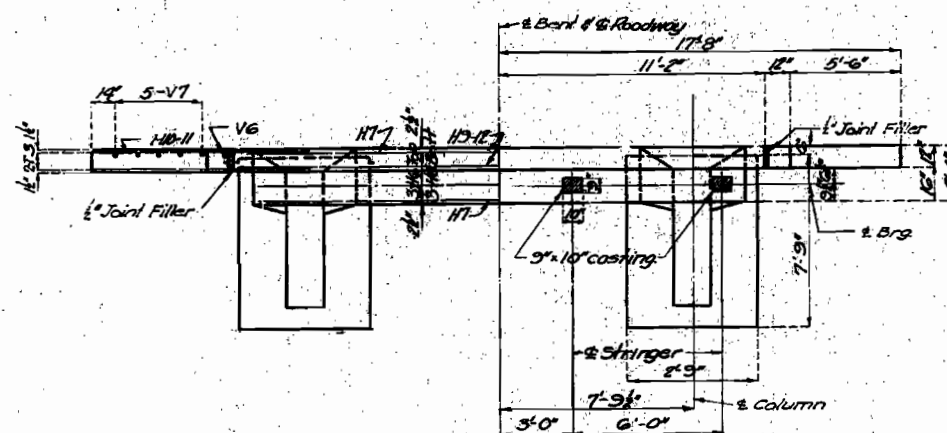


# MISSOURI STATE HIGHWAY DEPARTMENT

FED. ROAD DIST. NO.	STATE	FED. AID PROJ. NO.	FISCAL YEAR	SHEET NO.	TOTAL SHEETS
3	MO.	5-733(2) (SC)	19		



Note: Fill at end bent No. 5 shall not be carried above bottom of beam and wings until superstructure span (4-5) is in place.



DETAILS OF END BENT NO. 5

## BRIDGE OVER APPLE CREEK

STATE ROAD FROM ALTENBURG SOUTH TO CAPE GRARDEAU CO. LINE,  
ABOUT 6.7 MILES S.W. OF WITTENBURG  
PROJECT NO. 5-733(2) (SC) STA. 144+48

PERRY

COUNTY

FINISHED

Assembled Jan. 1955 by J.D.M. & S.W.S.  
Checked Feb. 1955 by C.S.A.

Note: This drawing is not to scale. Follow dimensions.

Sheet No. 4 of 8

P-803

2 Col. End  
Square & Skewed

20' or 22' Rdwy.  
H/O

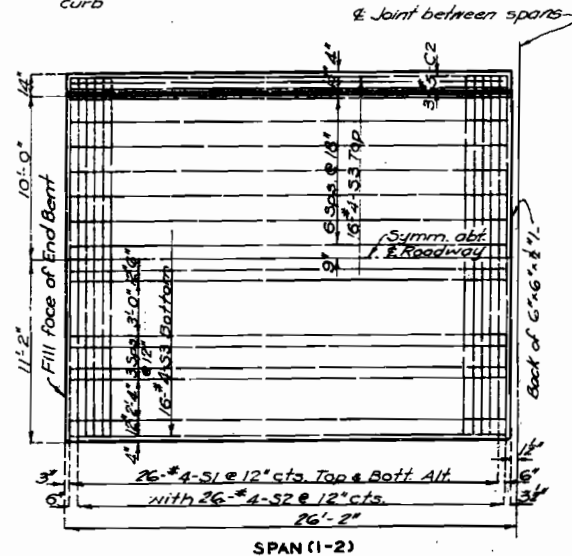
16



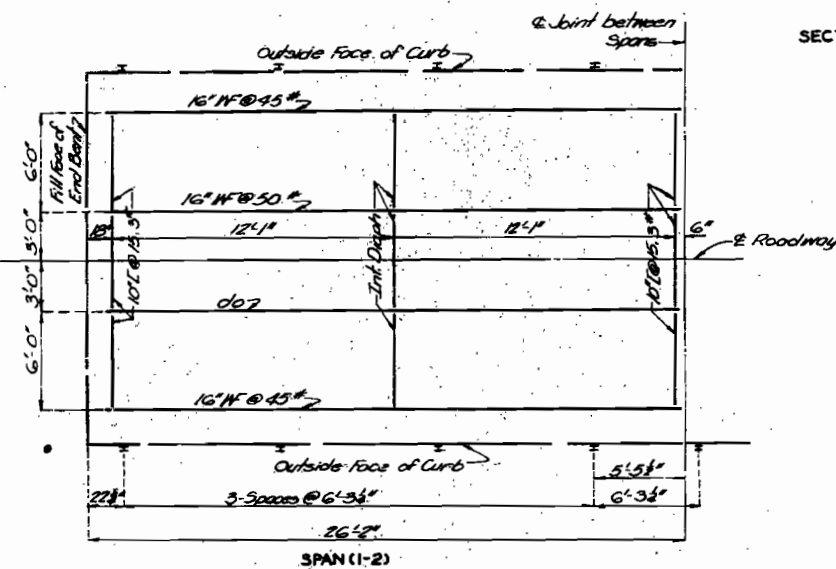
# MISSOURI STATE HIGHWAY DEPARTMENT

STATE	FED. AID	FISCAL	SHEET	TOTAL
MO.	5-733(2)	19	NO.	SHEETS

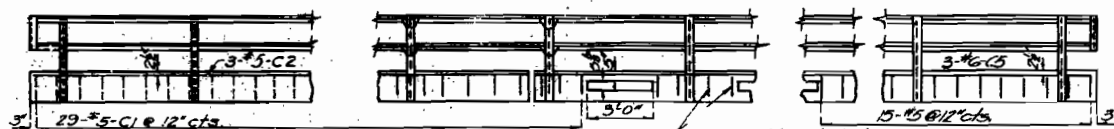
Note: Space dowel bars C1 at approximately 12" centers in curb



PART PLAN OF SLAB SHOWING REINFORCING

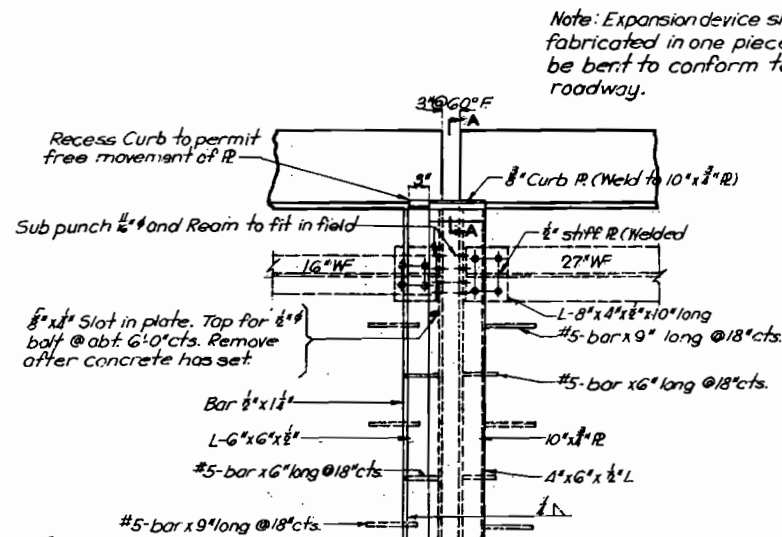


PART PLAN OF STRUCTURAL STEEL

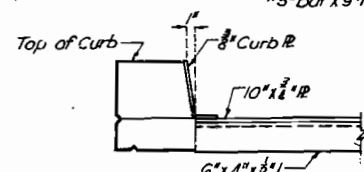


Note: Outlets to be centered between rail posts.  
TYPICAL CURB DETAILS

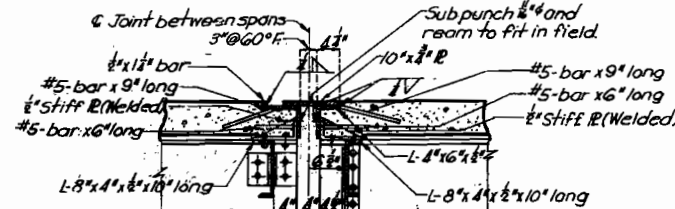
Note: omit outlets in span (1-2) & the last two rail panels span (4-5).



PART PLAN

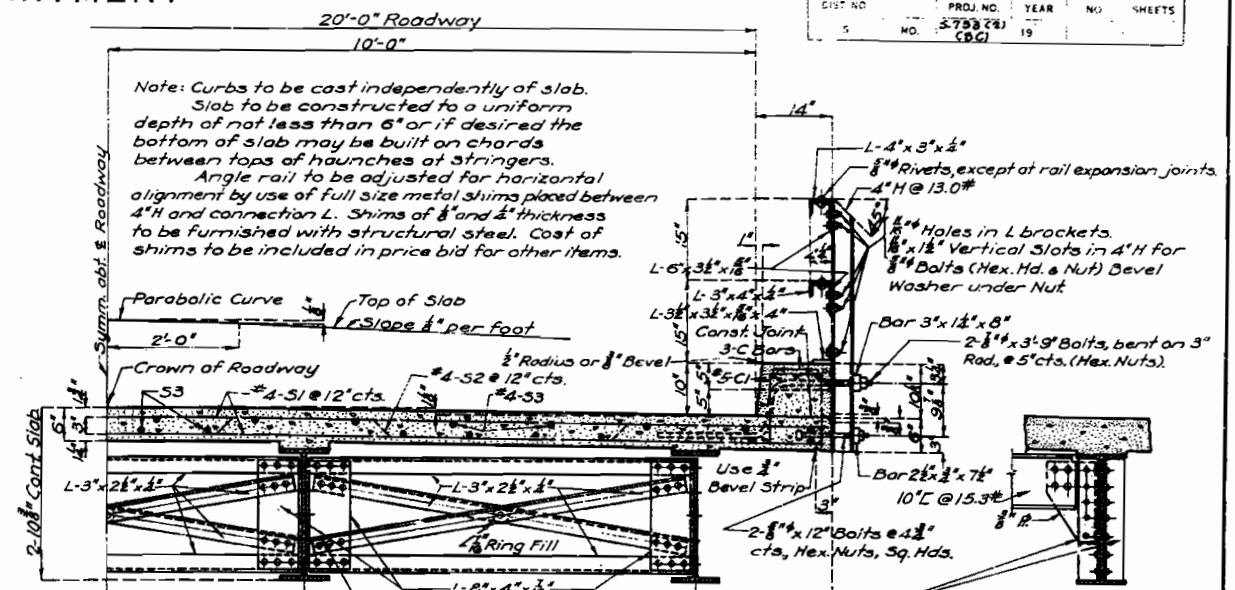


SECTION A-A



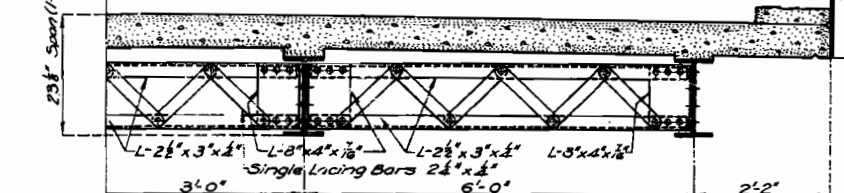
PART SECTION NEAR INT. STRINGER  
DETAILS OF EXPANSION DEVICE AT BENT NO.2

Note: Expansion device shall be fabricated in one piece and shall be bent to conform to crown of roadway.

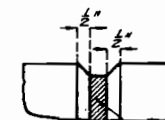


HALF SECTION THROUGH SPANS REQUIRING 21", 24" & 27" STRINGERS

21" Span (1-2)



Note: Slab, curb, rail and post details same as shown in section for 24" stringers.  
HALF SECTION THROUGH SPANS REQUIRING 14", 16" & 18" STRINGERS

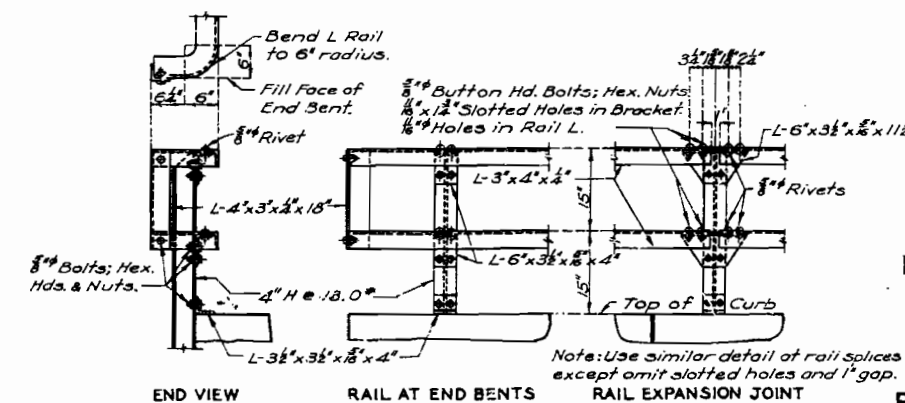


Note: Use bevel as shown for exposed faces of all filled joints  
DETAILS OF BEVEL FOR FILLED JOINTS



Note: Slab shall be built parallel to grade and to a minimum thickness of 5'. Dead load deflection, vertical curve (if any), crown and any difference in depth of stringers shall be taken care of by haunching to stringers by the amounts shown above. This additional concrete is included in "Estimated Quantities".

SLAB HAUNCHING DIAGRAM



END VIEW

RAIL AT END BENTS

DETAILS OF RAIL

RAIL EXPANSION JOINT

## BRIDGE OVER APPLE CREEK

STATE ROAD FROM ALTENBURG SOUTH TO CAPE GIRARDEAU CO. LINE  
ABOUT 6.7 MILES S.W. OF WITTENBURG

PROJECT NO. 5-733(2) (SC) STA 144+48

PERRY

COUNTY

FINISHED

P-803

Sheet No. 5 of 8

Assembled Jan. 1955 by J.D.M., S.W.S. & W.G.S.  
Checked Feb. 1955 by R.H.L.

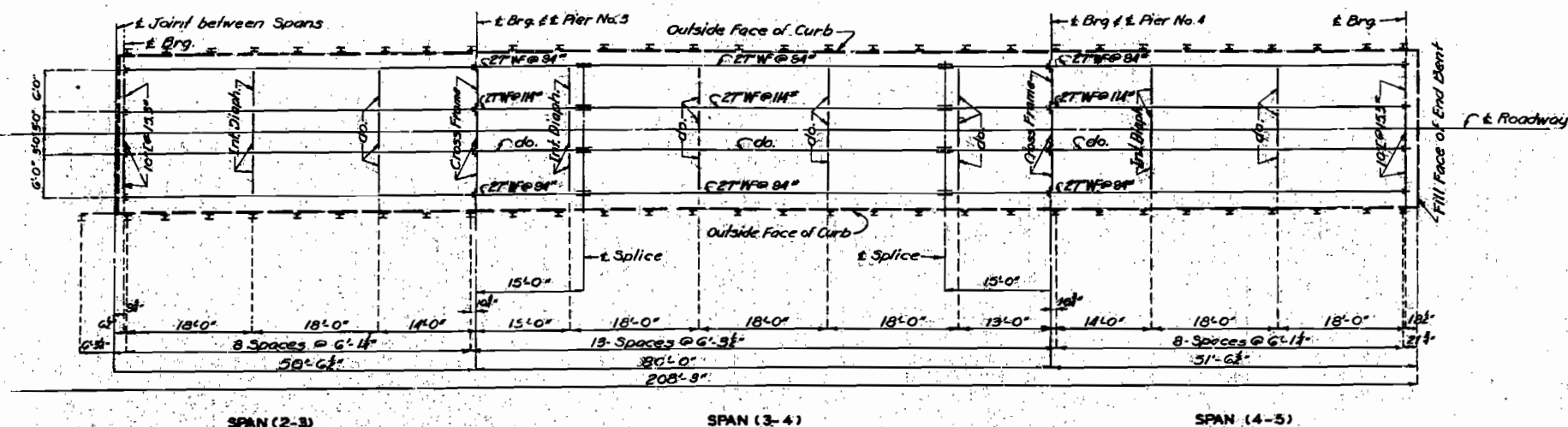
Note: This drawing is not to scale. Follow dimensions.

Sq. 26-H10  
Rev. Jan. 1951

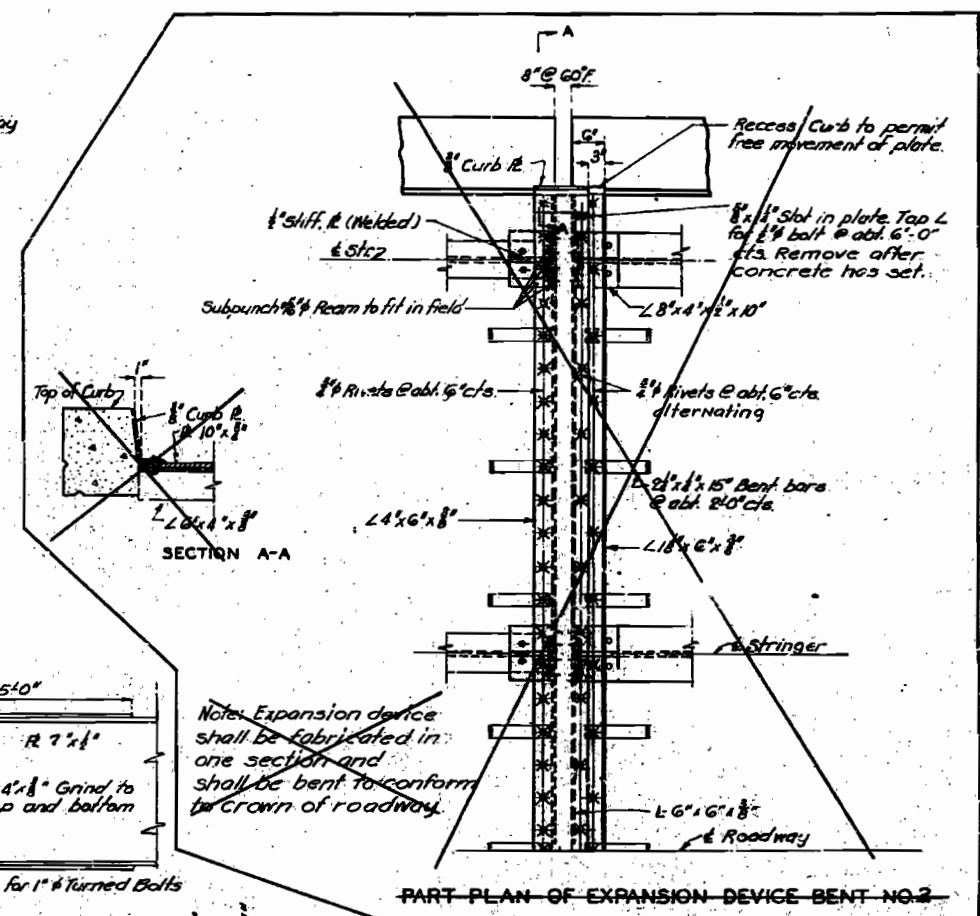


# MISSOURI STATE HIGHWAY DEPARTMENT

FED. ROAD DIST. NO.	STATE	FED. AID PROJ. NO.	FISCAL YEAR	SHEET NO.	TOTAL SHEETS
5	MO.	5-733(2)	19		

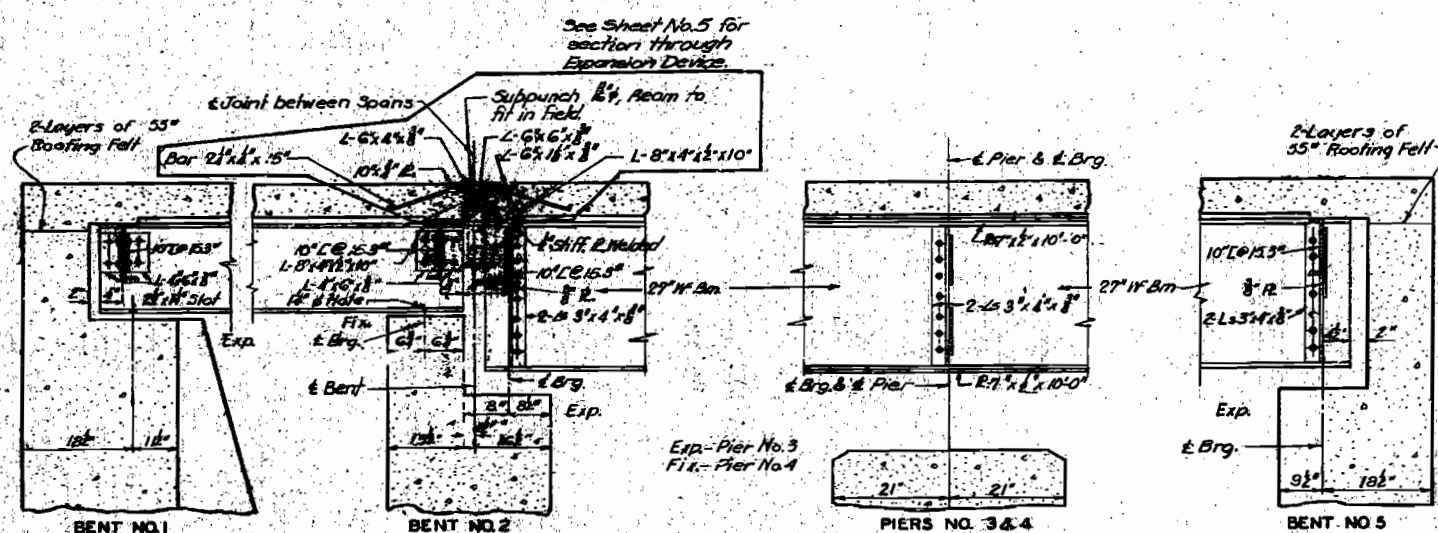


PART PLAN OF STRUCTURAL STEEL

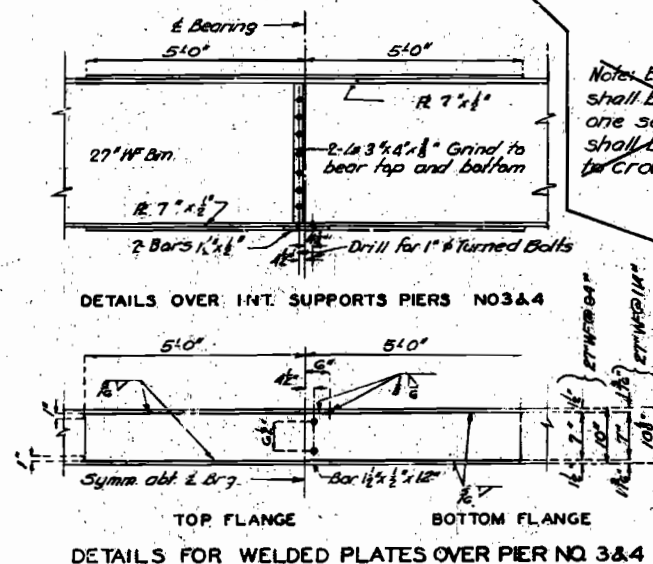


PART PLAN OF EXPANSION DEVICE BENT NO. 2

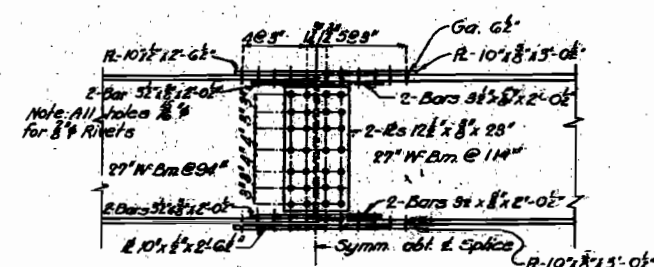
See Sheet No. 5 for Details of Expansion Device



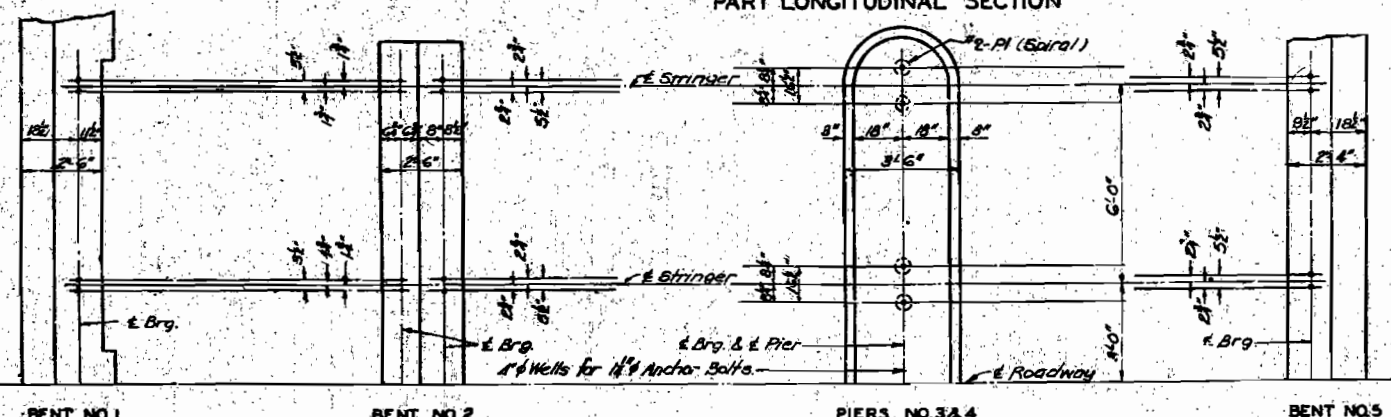
PART LONGITUDINAL SECTION



DETAILS FOR WELDED PLATES OVER PIER NO. 3 & 4



DETAIL OF FIELD SPLICES



HALF ANCHOR BOLT PLAN

Note: Holes for all 1/2" anchor bolts shall be formed in substructure by placing and setting with template 1/4" wells of depth shown above. Grout for anchor bolts shall contain Iron Oxide (Embeco) or an approved equivalent.

PART SECTION SHOWING ANCHOR BOLT WELL

## BRIDGE OVER APPLE CREEK

STATE ROAD FROM ALTENBURG SOUTH TO CAPE GIRARDEAU CO. LINE. ABOUT 6.7 MILES S.W. OF WITTENBURG. PROJECT 5-733(2) (SC) STA 144+48

PERRY COUNTY

FINISHED

Drawn Jan. 1955 by J.D.M.  
Traced Feb. 1955 by J.H.K.  
Checked Feb. 1955 by R.H.L.

Note: This drawing is not to scale. Follow dimensions.

Sheet No. 6 of 8

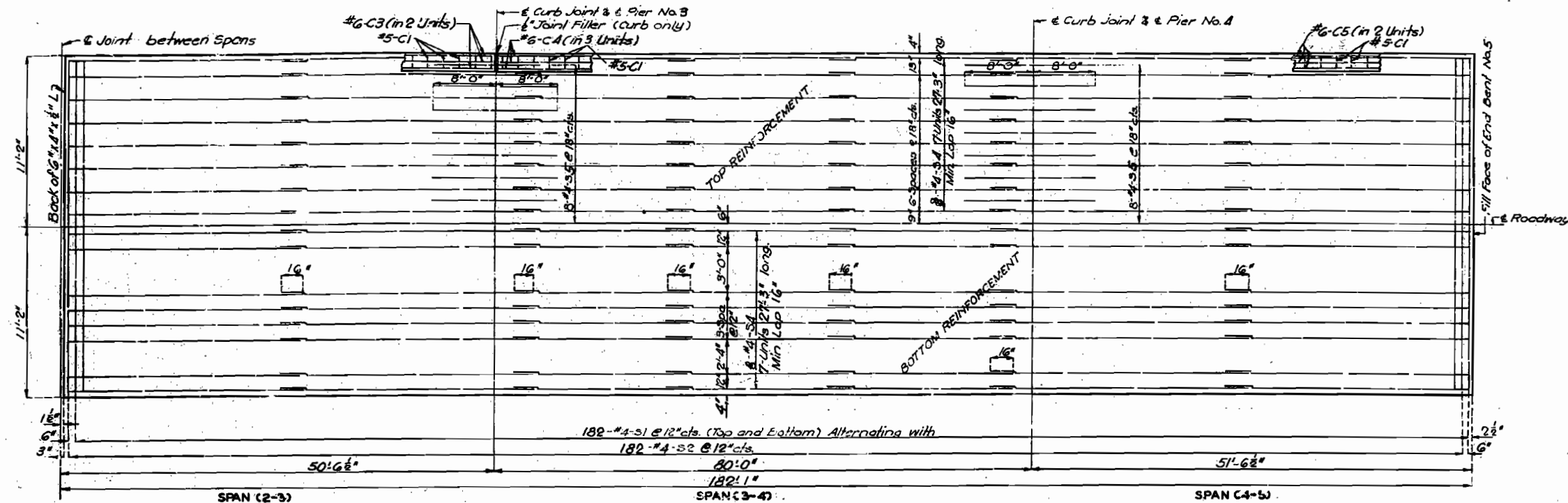
P-803

Revised Sept. 17, 1951

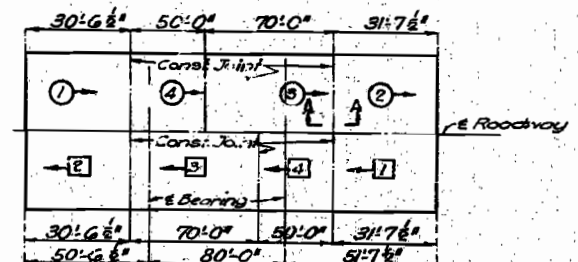
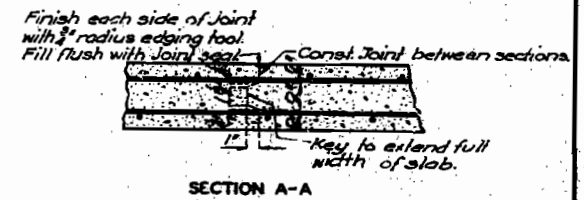


# MISSOURI STATE HIGHWAY DEPARTMENT

FED. ROAD DIST. NO.	STATE	FED. AID PROJ. NO.	FISCAL YEAR	SHEET NO.	TOTAL SHEETS
5	MO.	(6175C)	19		

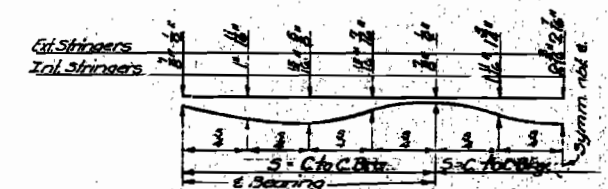


PART PLAN OF SLAB SHOWING REINFORCING



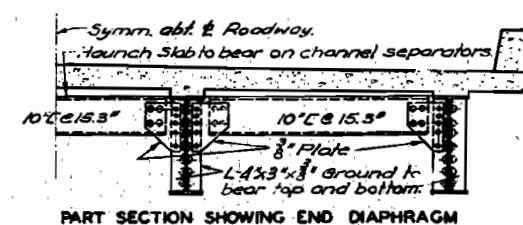
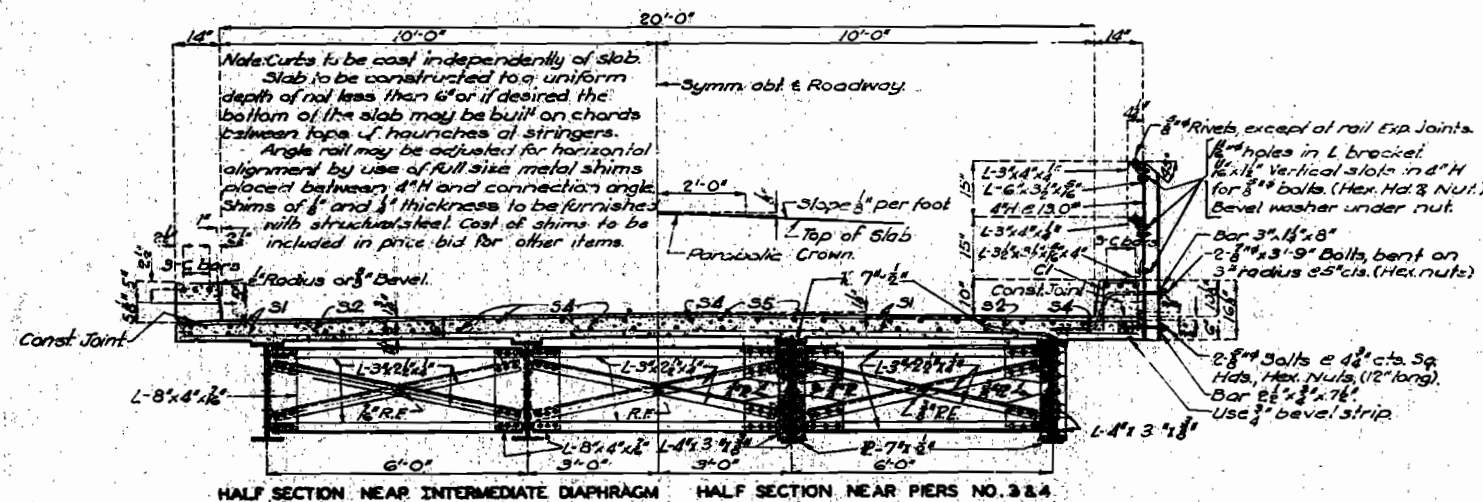
Note: The slab shall be poured in sections of the lengths shown above and in the sequence indicated by the numbers 1, 2, 3, 4 or as an alternate, by the numbers 7, 6, 5, 4. The separate pours shall progress in the direction indicated by the arrows. Longitudinal construction joints will not be permitted.

SLAB POURING SEQUENCE



Note: The slab shall be built parallel to grade and to a uniform thickness of 6". Dead load deflection difference in depth of stringers and crown shall be taken care of by haunching to stringers by the amounts shown above. This additional concrete is included in Estimated Quantities.

SLAB HAUNCHING DIAGRAM



PART SECTION SHOWING END DIAPHRAGM

## BRIDGE OVER APPLE CREEK

STATE ROAD FROM ALTENBURG SOUTH TO CAPE GIRARDEAU CO. LINE  
ABOUT 6.7 MILES S.W. OF WITTENBURG  
PROJECT NO. S-733(2) (SC) STA. 144+48

PERRY COUNTY FINISHED

Assembled Jan. 1955 by J.D.M. & W.B.S.  
Checked Feb. 1955 by R.H.L.

Note: This drawing is not to scale. Follow dimensions.

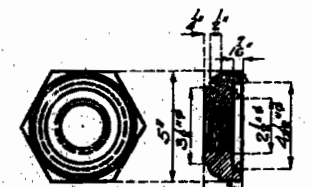
Sheet No. 7 of 8

P-803

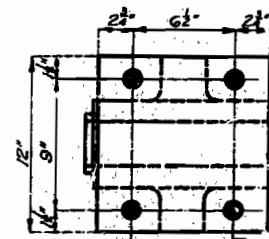
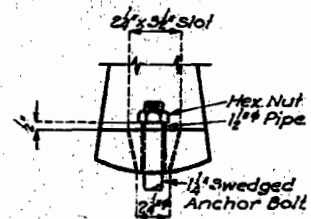


# MISSOURI STATE HIGHWAY DEPARTMENT

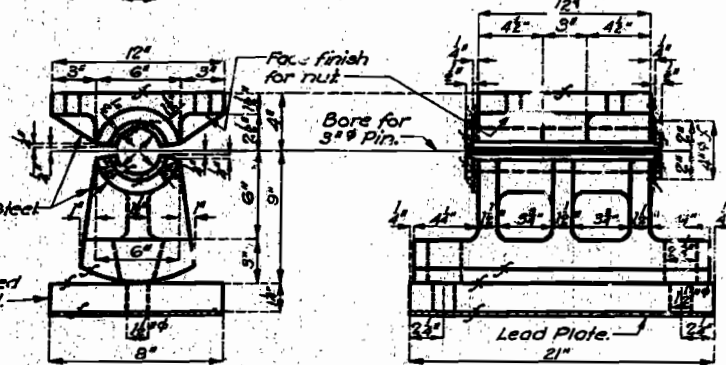
FED. ROAD DIST. NO.	STATE	FED. AID PROJ. NO.	FISCAL YEAR	SHEET NO.	TOTAL SHEETS
5	MO.	5-733(2) (P.C.)	19		



CAST STEEL NUT  
16-Required  
8-3/4" Rolled steel pins required

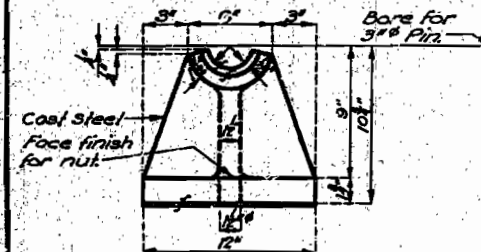


Drill holes for 1" turned bolts.

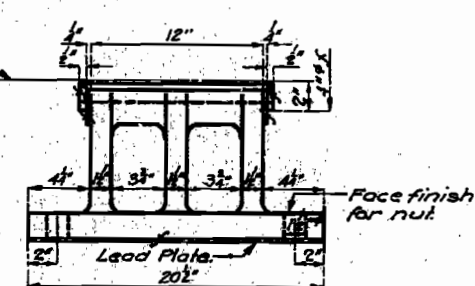


EXPANSION ROCKER  
4-Required

Note: Cast steel cap same as shown above.

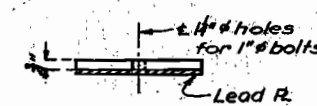


FIXED PEDESTAL  
4-Required  
TYPE "A"



PLAN

Note: Structural Steel Plates to be straightened to plane surfaces.

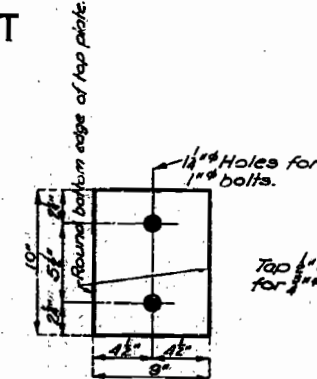


END ELEVATION

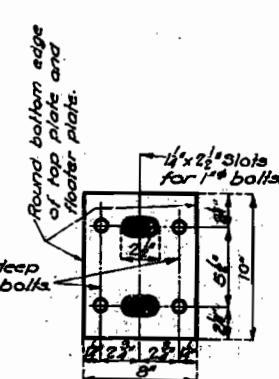
8-Required

DETAILS OF STRUCTURAL STEEL PLATES

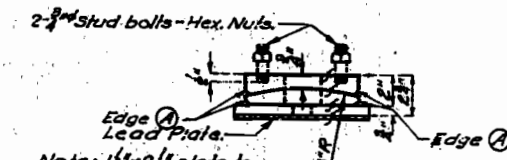
Note: Material for 8"x8" plates to be structural steel.  
Anchor bolts for structural steel plates shall be 1" swaged bolts, no heads, Hex. nuts and shall extend 10" into concrete.  
Beams on structural steel plates to have 1/4" holes in bottom flange at fixed end and 1/4"x2" slots at expansion end.



BOTTOM PLATE



TOP PLATES



END ELEVATION - EXP

Required: 8 Sets

Each set consists of 3 plates each.

TYPE "C"

## GENERAL NOTES:

Finish all surfaces marked S.  
All fillets for Type "A" castings shall have 3" radius.  
Material for Type "A" castings shall be Cast steel, except as noted. Material for Type "C" castings shall be either gray iron alloy or cast steel but payment will be made as Gray Iron Alloy.  
All pins, bolts, nuts, pipe sleeves, rolled steel and pinholes shall be paid for as structural steel.  
Anchor bolts for Type "A" castings shall be 1/4" swaged bolts with Hex. nuts and shall extend 12" into concrete.  
Anchor bolts for Type "C" castings shall be 1/4" swaged bolts, no heads or nuts and shall extend 10" into concrete. Top ends of anchor bolts shall be above the top of castings but not higher than 1/4" below the top surface of the bottom flange of beam.  
Lead plates under bearings shall be approximately 1/8" thickness and weigh 8 1/2 lbs. Cost of lead plates shall be included in price bid for other items.  
Edge (A) to be rounded (1/2" to 3/4" Radius).

## BRIDGE OVER APPLE CREEK

STATE ROAD FROM ALTENBURG SOUTH TO C. P. GRARDEAU CO. LINE  
ABOUT 8.7 MILES S.W. OF WITTENBURG  
PROJECT NO. 5-733(2) (SC) STA. 144+48

PERRY COUNTY

FINISHED

P-803

Assembled Jan. 1955 by JDM. & JNK.  
Checked Feb. 1955 by RHL.

Note: This drawing is not to scale. Follow dimensions.

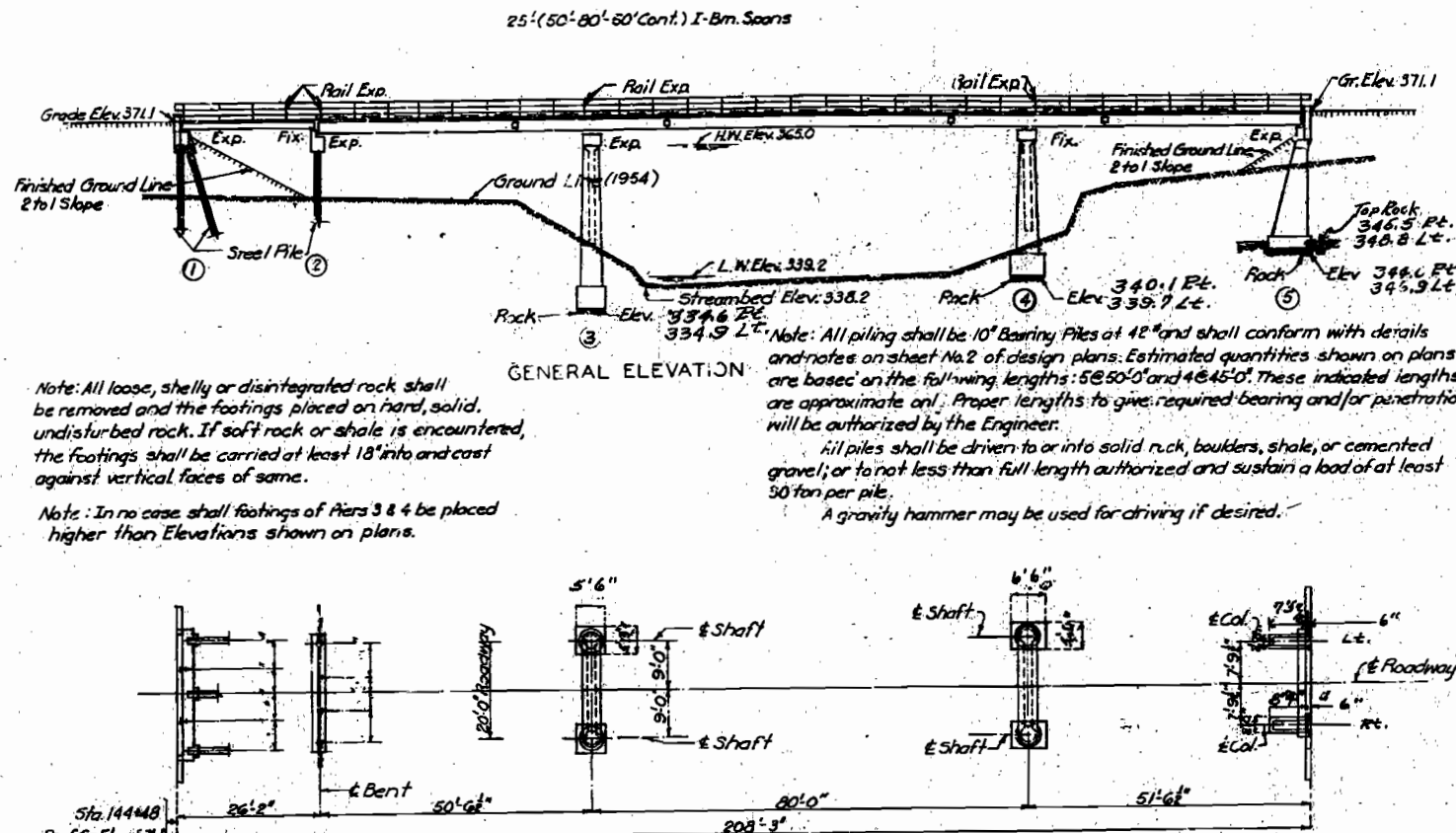
Sheet No. 8 of 8



# MISSOURI STATE HIGHWAY DEPARTMENT

FED. ROAD DIST. NO.	STATE	FED. AID PROJ. NO.	FISCAL YEAR	SHEET NO.	TOTAL SHEETS
5	MO.	2-23-57	19	10	19

## FINAL PLANS



COMPLETE BILL OF REINFORCING STEEL									
No.	Size	Length	Mark	Location	Bending Sketches & Cutting Diagrams	No.	Size	Length	Mark
<b>Superstructure</b>					<b>Intermediate Bent No. 2</b>				
226	5/8"	2'-9"	C1	Curb	13' 2'-7 1/2"	4	5/8"	2'-3"	G1
6	5/8"	25'-9"	C2	"	7'-5" 9'-10"	8	5/8"	23'-3"	G2
12	5/8"	26'-3"	C3	"	6'-9"	9	5/8"	3'-3"	U2
18	5/8"	28'-0"	C4	"	3'-11" CUT 3	22	5/8"	4'-3"	U6
12	5/8"	26'-9"	C5	"	4'-3" CUT 8	44	5/8"	6'-0"	U7
416	5/8"	22'-0"	S1	Slab	5'-7" CUT 5	6	5/8"	2'-0"	U8
208	5/8"	24'-0"	S2	"	16'-0" CUT 32	<b>Piers No. 3 &amp; 4</b>			
32	5/8"	25'-9"	S3	"	12'-6"	16	5/8"	13'-6"	DE
224	5/8"	27'-3"	S4	"	12'-6"	16	5/8"	8'-6"	D3
30	5/8"	16'-0"	S5	"	12'-6"	4	5/8"	20'-6"	H13
<b>End Bent No. 1</b>					<b>End Bent No. 5</b>				
2	5/8"	22'-3"	H1	Bk. Wall	14	5/8"	4'-9"	D1	Footing
8	5/8"	26'-0"	H2	Bm.	6	5/8"	7'-0"	F1	Col. Hch.
4	5/8"	24'-0"	H3	"	6	5/8"	7'-0"	F2	"
6	5/8"	6'-0"	H4	Wing	3	5/8"	22'-0"	H6	Beam
2	5/8"	4'-6"	H5	"	<b>End Bent No. 5 (Cont'd)</b>				
4	5/8"	9'-3"	T1	Wing	3	5/8"	20'-0"	H7	Beam
4	5/8"	8'-0"	T2	"	3	5/8"	20'-7"	H8	"
48	5/8"	7'-0"	U1	Beam	2	5/8"	22'-3"	H9	"
8	5/8"	3'-3"	U2	"	8	5/8"	16'-3"	H10	Wing
24	5/8"	7'-9"	U3	Buttress	3	5/8"	20'-0"	H12	Beam
6	5/8"	7'-0"	U4	"	4	5/8"	11'-3"	T3	Wing
6	5/8"	6'-9"	U5	"	20	5/8"	9'-0"	U9	Beam
44	5/8"	2'-9"	V1	Bk. Wall	4	5/8"	3'-0"	U10	"
2	5/8"	6'-3"	V2	Wing	44	5/8"	4'-3"	V5	Bk. Wall
4	5/8"	8'-9"	V3	"	2	5/8"	5'-9"	V6	Wing
12	5/8"	3'-9"	V4	Buttress	6	5/8"	8'-3"	V7	"

## GENERAL NOTES

Design Specifications: A.A.S.H.O.-1953  
 Loading: H10-44  
 Structural Steel Stress: 18,000 psi  
 Reinforcing Steel Stress: 18,000 psi  
 Concrete Class "B" Stress: 1,000 psi  
 All concrete shall be Class "B"  
 Rivets 1/2", holes 1/2", except where otherwise noted.  
 Field connections shall be riveted except as noted in handrail details, and if the contractor desires to eliminate all field riveting in this project he may use high tensile steel bolts with carburized washers for the expansion device and the beam splices in the continuous spans and American Standard Regular machine bolts for other field connections except for the 3/4" button head bolts specified for handrail. See Special Provisions.  
 Paint: Shop, none; Field, contact surfaces of bolted field connections (except where high tensile bolts are used) one coat of red lead and surfaces inaccessible after erection three coats of red lead. No other paint to be applied by Contractor except as noted for steel piles. Red lead required shall be furnished by Contractor. Payment for cleaning and painting such surfaces will be included in unit price bid for fabricated structural steel.  
 Where joint filler is specified on the plans it shall conform with the requirements for Premoulded Material for Filler as given in Section 38-19A(1) of the Standard Specifications.  
 All beams over 55 feet in length shall be shipped by rail to the specified shipping point.  
 Surfaces of piles at Bent No. 1 from bottom of concrete cap to 3'-0" below present ground line shall be painted with one coat of an approved brand of emulsified asphalt paint. Payment for excavating around piles below present ground line and backfilling same, furnishing emulsified asphalt paint and cleaning and painting steel surfaces specified will be included in the unit price bid for other items.  
 For requirements on welding electrodes see Special Provisions. Qualification of welding operators will be required.

## FINAL QUANTITIES

Item	5.50 ft.	Superstr.	Total
Class 1 Excavation for Structures	Cu Yds 166.5		166.5
Class 2 Excavation for Structures	Cu Yds 88.0		88.0
Class "B" Concrete	Cu Yds 122.6	100.9	223.5
Fabricated Structural Steel	Lbs 970	100,000	100,970
Steel Castings	Lbs 2750		2750
Gray Iron Alloy Castings	Lbs 470		470
Reinforcing Steel	Lbs 9,700	17,120	26,820
Steel Piles in place	Lin. Ft. 387		387
Steel Piles Cut-offs	Lin. Ft. 43		43

Note: Excavation for bridge made above Elev. 340.0 will be paid for as Class 1 Excavation for Structures. Excavation for bridge made below Elev. 340.0 will be paid for as Class 2 Excavation for Structures. Estimated weight of fabricated structural steel in substructure consists of weight of angles required for steel pile bents.

B.M. 15 Lev. 363.12 Spike in Telephone Pole 95' Rt. of Sta. 144+25.

## BRIDGE OVER APPLE CREEK

STATE ROAD FROM ALTENBURG SOUTH TO CAPE GIRARDEAU  
 ABOUT 6.7 MILES S.W. OF WITTENBURG CO. LINE  
 PROJECT NO. S-733(2) (SC) STA 144+48  
 PERRY COUNTY

DESIGNED BY J.A. Williams DATE 2/23/55  
 APPROVED BY Prof. M. Whitton DATE 2/23/55

STDC-110R3  
 P-803

## FINAL PLANS

Drawn Feb. 1955 by B.R.G.  
 Checked Feb. 1955 by C.S.A. & R.M.L.

Note: This drawing is not to scale. Follow dimensions.

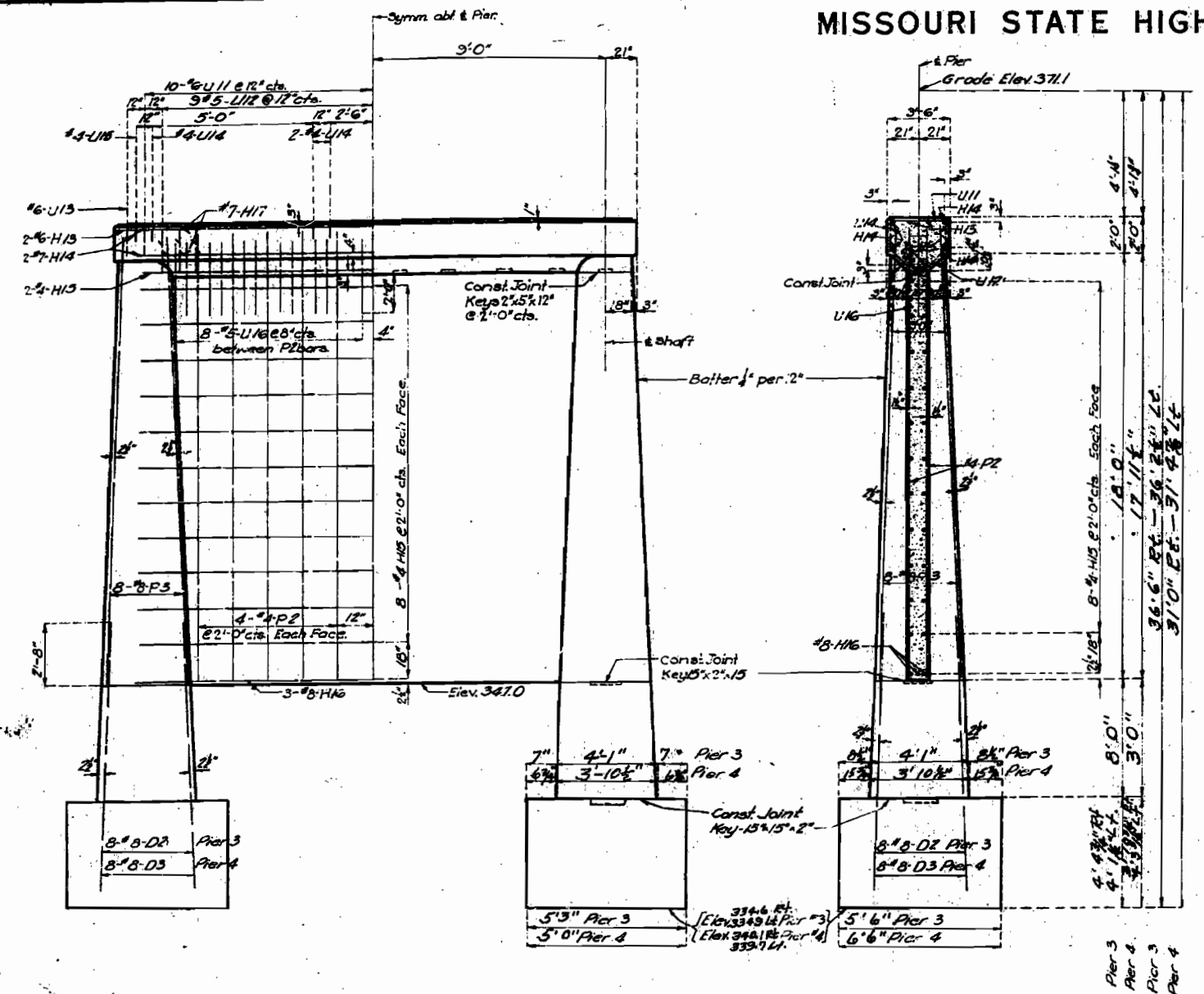
Sheet No. 1A of 3



MISSOURI STATE HIGHWAY DEPARTMENT

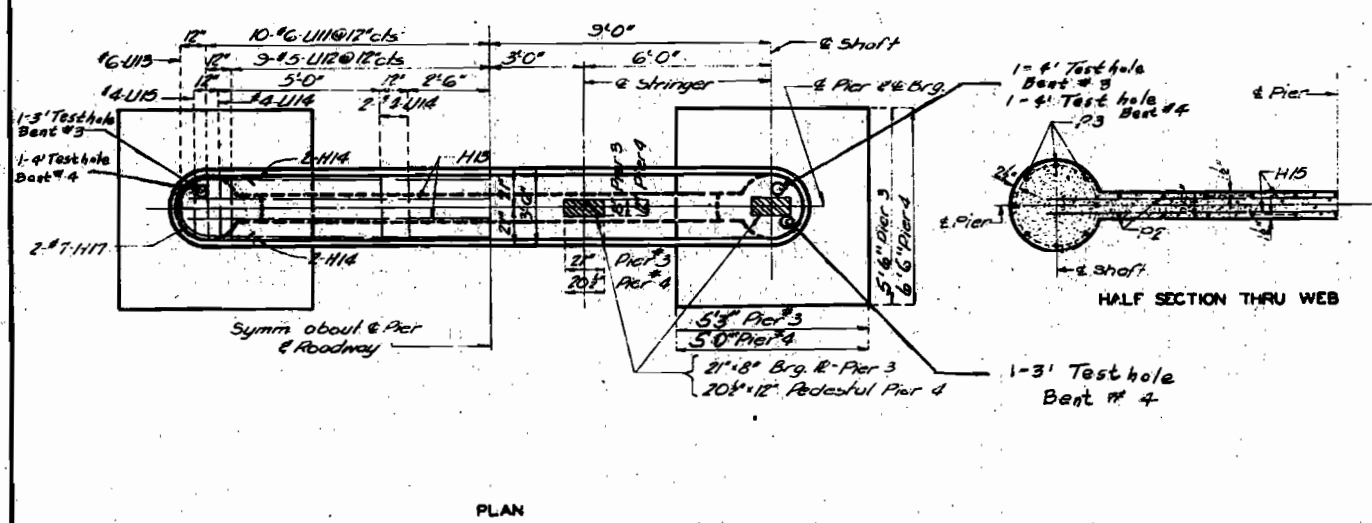
FED. ROAD DIST. NO.	STATE	FED. AID PROJ. NO.	FISCAL YEAR	SHEET NO.	TOTAL SHEETS
5	MO.	5-733(2)	19	12	19

FINAL PLANS



ELEVATION

SECTION



PLAN

DETAILS OF PIERS NO. 3 & 4

HALF SECTION THRU WEB

BRIDGE OVER APPLE CREEK  
STATE ROAD FROM ALTENBURG SOUTH TO CAPE GIRARDEAU CO. LINE.  
ABOUT 6.7 MILES S.W. OF WITTENBURG  
PROJECT NO. 5-733(2) (SC) STA. 144+48  
PERRY COUNTY

Assembled Jan. 1955 by M.E.S.A.S.H.S.  
Checked Feb. 1955 by C.S.A.

Note: This drawing is not to scale. Follow dimensions.

Sheet No. 24 of 28

FINAL PLANS

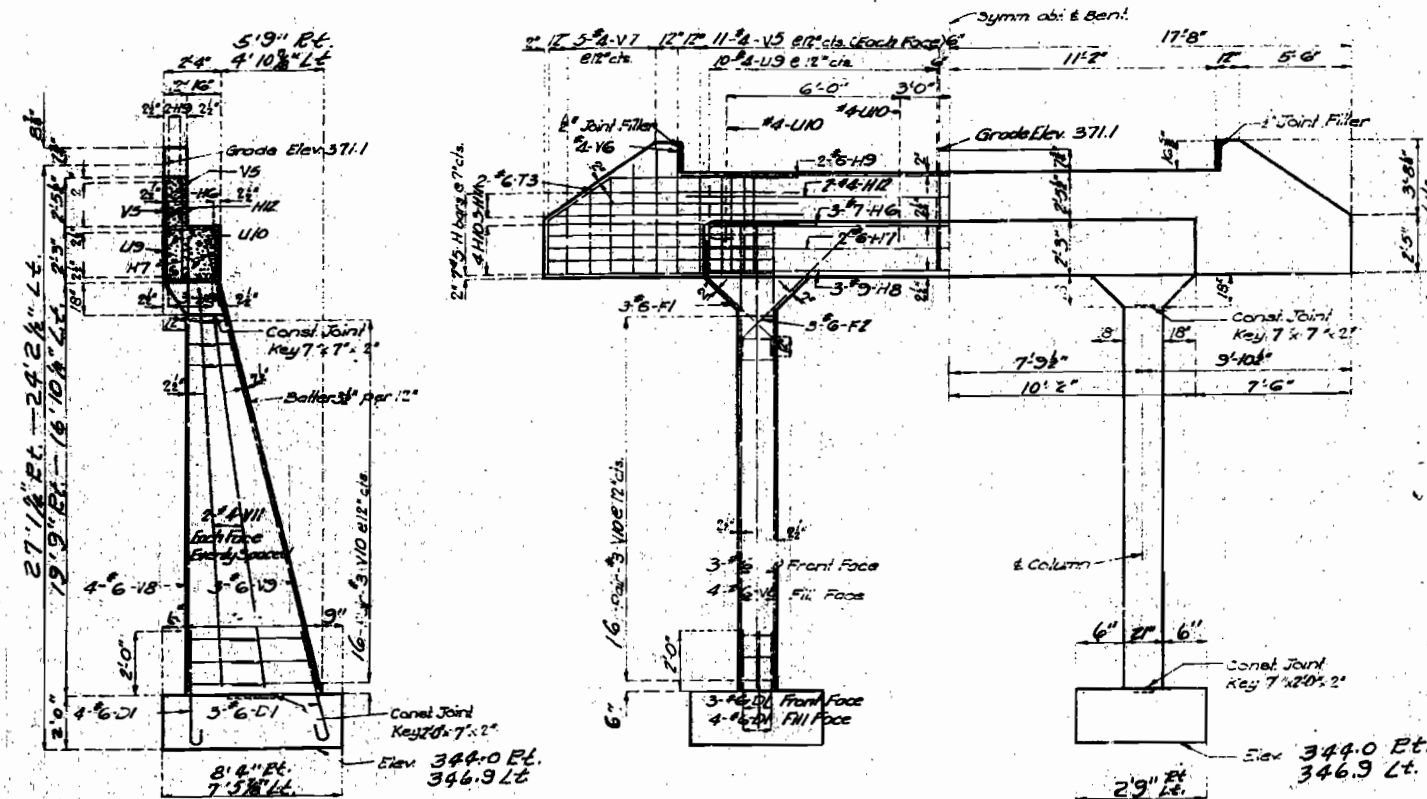
P-803



# MISSOURI STATE HIGHWAY DEPARTMENT

FED. ROAD DIST. NO.	STATE	FED. AID PROJ. NO.	FISCAL YEAR	SHEET NO.	TOTAL SHEETS
5	MO.	5-73312	19	13	19

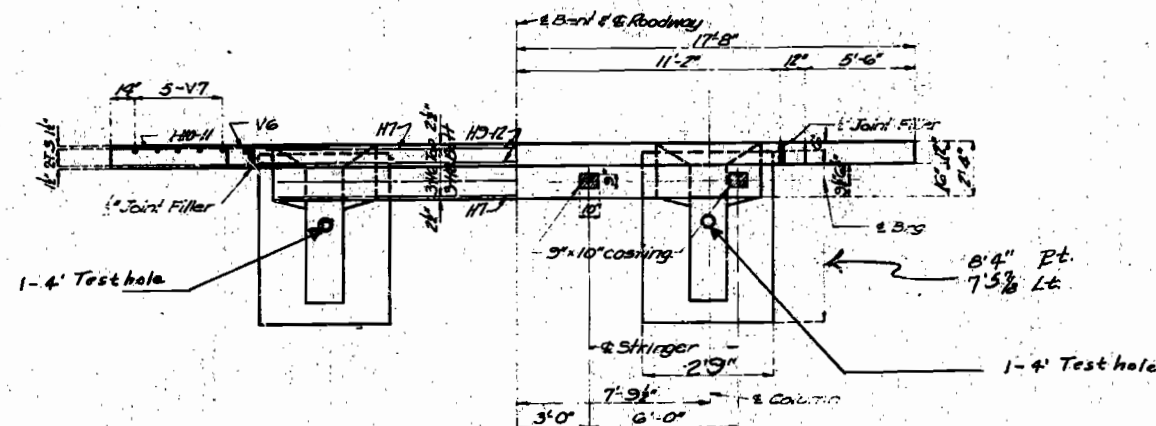
## FINAL PLANS



SECTION AT E

ELEVATION

Note: Fill at end bent No. 5 shall not be carried above bottom of beam and wings until superstructure span (4-5) is in place.



PLAN

DETAILS OF END BENT NO. 5

Summary of Test Holes			
Bent No.	Left Footing	Right Footing	Total Length
3	1-3'	1-4'	7' ✓
4	1-4'	1-4'	11' ✓
5	1-4'	1-4'	8' ✓
26' ✓			

## BRIDGE OVER APPLE CREEK

STATE ROAD FROM ALTENBURG SOUTH TO CAPE GRANDEAU CO. LINE.  
ABOUT 6.7 MILES S.W. OF WITTENBURG  
PROJECT NO. 5-73312 (SC) STA. 144+48

PERRY

FINISHED

COUNTY

FINISHED

P-803

Assembled Jan. 1955 by J.D.M. & S.W.S.  
Checked Feb. 1955 by C.S.A.

Note: This drawing is not to scale. Follow dimensions.

Sheet No. 3A of 3


## FINAL PLANS

2 Col. End Square & Shaded


20' or 22' Rdwy. H/O

98

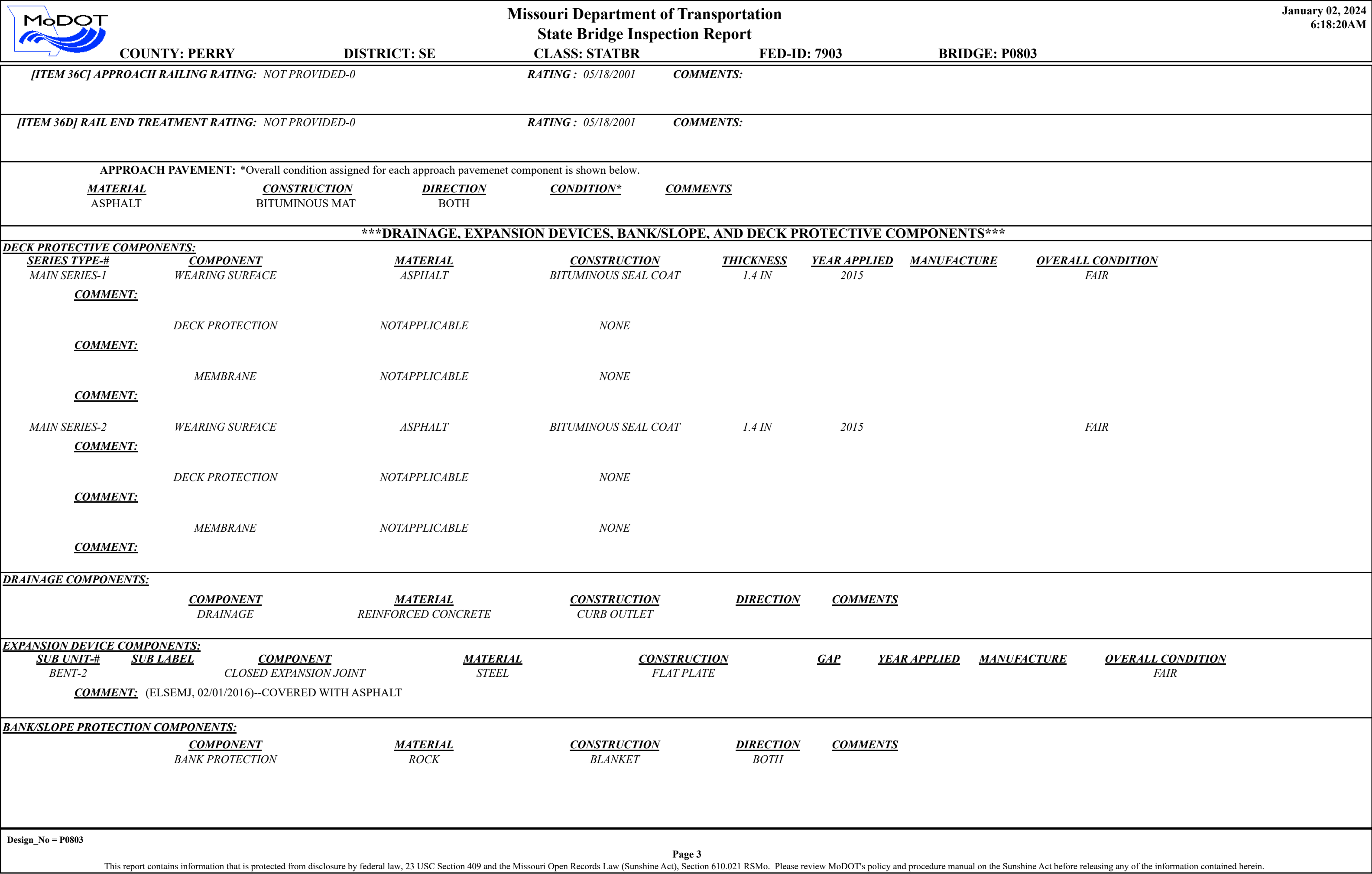


		<div>Missouri Department of Transportation</div> <div>State Bridge Inspection Report</div>			<div>January 02, 2024</div> <div>6:18:20AM</div>		
COUNTY: PERRY		DISTRICT: SE	CLASS: STATBR	FED-ID: 7903	BRIDGE: P0803		
***GENERAL STRUCTURE INFORMATION***					***BRIDGE INSPECTION INFORMATION***		
<div>ROUTE: RTCS</div> <div>FEATURE: APPLE CR</div> <div>STATUS: P-POSTLOAD</div> <div>LOG MILE: 27.901</div> <div>DETOUR: 24.00 MILES</div> <div>NHS: NO</div> <div>BUILT: 1955</div> <div>REHAB:</div> <div>LOCATION: S 4 T 33 R 13 E</div> <div>LATITUDE: 37 35 29.41 (DMS)</div> <div>LONGITUDE: 89 36 10.96 (DMS)</div>		<div># SPANS: 4</div> <div>LANES ON: 1</div> <div>LANES UNDER: 0</div> <div>COMPASS DIRECTION: EAST to WEST</div> <div>DIRECTION OF TRAFFIC: 1-LN/2-WAY</div> <div>FUNCTIONAL CLASS: RL-MAJOR COLLECTOR</div> <div>NBI OWNER: MODOT</div> <div>NBI MAINTAINED: MODOT</div> <div>MAINTENANCE DISTRICT: SE</div> <div>MAINTENANCE COUNTY: PERRY</div> <div>SUB AREA: 7H24</div>		<div>PLACE CODE: 08092 BRAZEAU</div> <div>LENGTH: 208 FT 0 IN</div> <div>MAXIMUM SPAN: 80 FT 0 IN</div> <div>APPROACH ROADWAY: 20 FT 0 IN</div> <div>CURB TO CURB: 20 FT 0 IN</div> <div>OUT TO OUT: 22 FT 3 IN</div> <div>AADT: 1189</div> <div>AADT YEAR: 2022</div> <div>AADT TRUCK: 11.1%</div> <div>FUTURE AADT: 1665</div> <div>FUTURE AADT YEAR: 2042</div>		<div>DATE: 10/11/2023</div> <div>RESPONSIBILITY: DISTRICT</div> <div>FREQUENCY: 24</div> <div>CALCULATED INTERVAL**: 24</div> <div>TEAM LEADER:</div> <div>ELEMENT: NO</div> <div>INSPECTOR 2: ED HESS</div> <div>INSPECTOR 4:</div> <div>** When calculated interval exceeds the frequency, a justification comment per BIRM is required.</div>	
						GENERAL INSPECTION COMMENTS	
***FRACTURE CRITICAL INSPECTION INFORMATION***				***INDEPTH INSPECTION INFORMATION***			
<div>DATE:</div> <div>FREQUENCY:</div> <div>TEAM LEADER:</div> <div>INSPECTOR 2:</div> <div>** When calculated interval exceeds the frequency, a justification comment per BIRM is required.</div>				<div>RESPONSIBILITY:</div> <div>CALCULATED INTERVAL**:</div> <div>INSPECTOR 3:</div> <div>INSPECTOR 4:</div> <div>DATE:</div> <div>FREQUENCY:</div> <div>TEAM LEADER:</div> <div>INSPECTOR 2:</div> <div>** When calculated interval exceeds the frequency, a justification comment per BIRM is required.</div>			
FRACTURE CRITICAL INSPECTION COMMENTS				INDEPTH INSPECTION COMMENTS			
***SPECIAL INSPECTION INFORMATION***				***UNDERWATER INSPECTION INFORMATION***			
<div>DATE: 06/06/2023</div> <div>FREQUENCY: 24</div> <div>TEAM LEADER: JERROD JERNIGAN</div> <div>INSPECTOR 2:</div> <div>** When calculated interval exceeds the frequency, a justification comment per BIRM is required.</div>				<div>RESPONSIBILITY: DISTRICT</div> <div>CALCULATED INTERVAL**: 23</div> <div>INSPECTOR 3:</div> <div>INSPECTOR 4:</div> <div>DATE: 10/11/2023</div> <div>FREQUENCY: 60</div> <div>TEAM LEADER:</div> <div>INSPECTOR 2: ED HESS</div> <div>** When calculated interval exceeds the frequency, a justification comment per BIRM is required.</div>			
SPECIAL INSPECTION COMMENTS				UNDERWATER INSPECTION COMMENTS			
OTHER SPECIAL INSPECTIONS				OTHER UNDERWATER INSPECTIONS			
Design_No = P0803							
<div>Page 1</div> <div>This report contains information that is protected from disclosure by federal law, 23 USC Section 409 and the Missouri Open Records Law (Sunshine Act), Section 610.021 RSMo. Please review MoDOT's policy and procedure manual on the Sunshine Act before releasing any of the information contained herein.</div>							

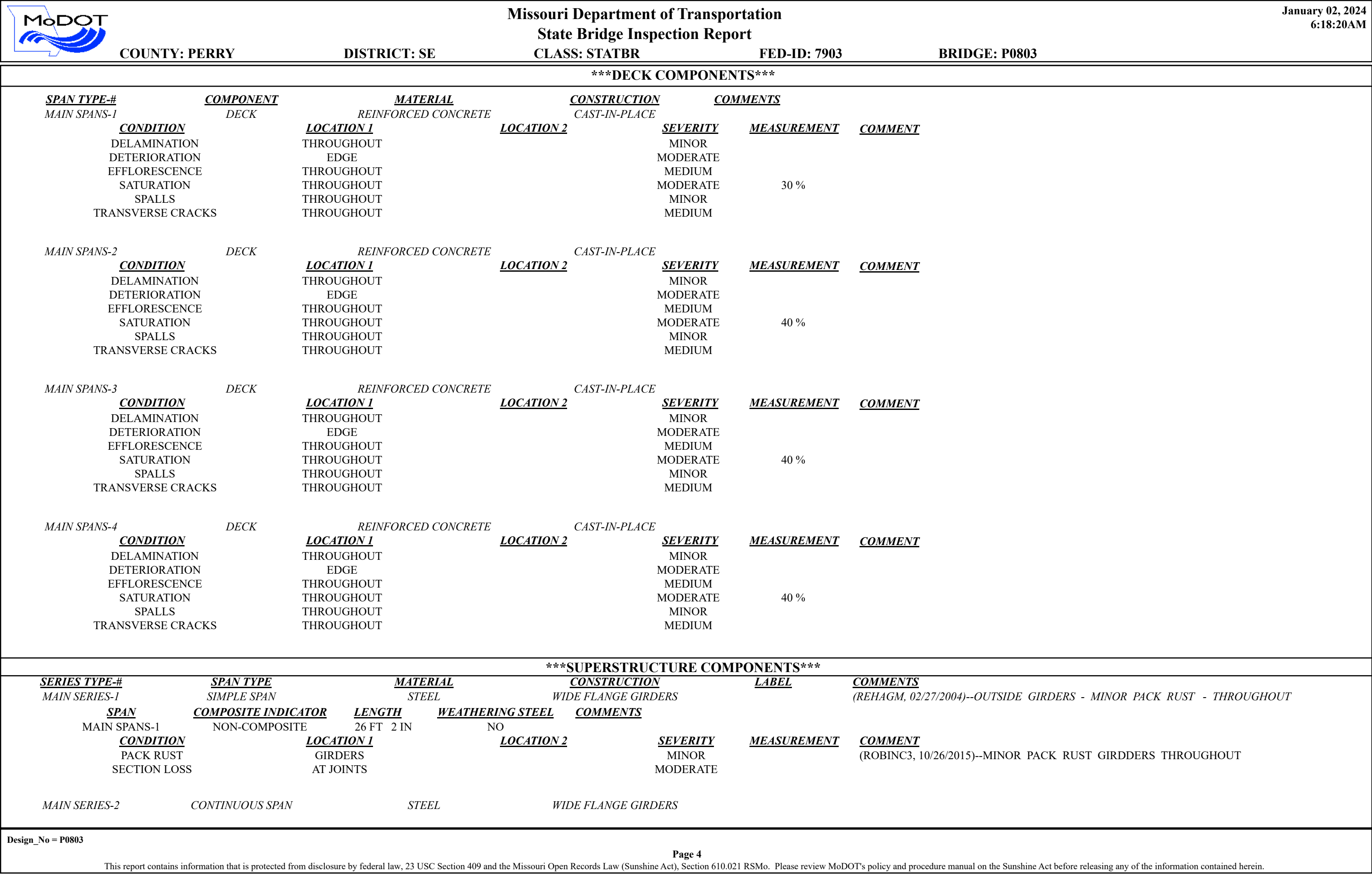


<div><div></div><div><div>Missouri Department of Transportation</div><div>State Bridge Inspection Report</div></div><div>January 02, 2024 6:18:20AM</div></div>													
COUNTY: PERRY				DISTRICT: SE		CLASS: STATBR		FED-ID: 7903		BRIDGE: P0803			
<u>DATE</u>	<u>FREQUENCY</u>	<u>CATEGORY</u>	<u>NBI</u>	<u>CALCULATED INTERVAL</u>	<u>RESPONSIBILITY</u>	<u>METHOD</u>							
05/15/2017	999	DAMAGE POST INCIDENT	NO		DISTRICT								
05/03/2017	999	SCOUR ACTION PLAN	NO		DISTRICT								
01/26/2016	999	QUALITY ASSURANCE	NO		BRIDGEDIV								
***STRUCTURE POSTING***													
APPROVED CATEGORY: S-5		CENTERLINE OF BRIDGE AND TRUCKS OVER 15 TONS 15 MPH ON BRIDGE.											
Ton 1: 15		Ton 2:		Ton 3:									
COMMENTS:													
FIELD CATEGORY: S-5		CENTERLINE OF BRIDGE AND TRUCKS OVER 15 TONS 15 MPH ON BRIDGE.											
Ton 1: 15		Ton 2:		Ton 3:		PROBLEM:				PROBLEM DIRECTION:			
COMMENTS:													
***GENERAL COMMENTS/MAJOR RATED ITEMS***													
GENERAL COMMENTS: (BOWDEJ1, 09/04/2008)--(26') SMP WF - (50'-80'-51') CONT WF GDR SPANS													
[ITEM 58] DECK: 5-FAIR CONDITION					COMMENTS: (DENNIB1, 10/17/2013)--EDGE DETERIORATION								
RATING : 02/01/2016					(ELSEMJ, 02/01/2016)--40% SAT SPANS 2,3 AND 4								
[ITEM 59] SUPER: 5-FAIR CONDITION					COMMENTS: (DENNIB1, 10/17/2013)--RUSTING OF TOP FLANGE								
RATING : 11/04/2011					(CROCKC1, 05/04/2017)--GIRDERS ON SPAN 3 APPEAR TO BE SAGGING 1 - 2 IN.								
					(WILSOT2, 10/23/2017)--INT SEC LOSS @ JOINT AREAS								
[ITEM 60] SUB: 6-SATISFACTORY CONDITION					COMMENTS: (DENNIB1, 10/17/2013)--DETERIORATION @ BEARING								
RATING : 02/01/2016					(ELSEMJ, 02/01/2016)--EXPOSED FOOTING ON ROCK BNT 4								
[ITEM 61] BANK/CHANNEL: 5-MAJOR DAMAGE					COMMENTS: (ELSEMJ, 02/01/2016)--WEST BANK SLOUGHING OFF								
RATING : 11/04/2011													
[ITEM 113] SCOUR: 3-SCOUR CRITICAL-UNSTABLE					COMMENTS: (FOSTEK, 06/15/2005)--SCOUR ANALYSIS REC'D 03-05. ANALYSIS NOTED POTENTIAL FOR SUBSTANTIAL EXPOSURE OF CONCRETE BENTS. BENTS								
RATING : 06/15/2005					KEYED INTO ROCK. RECOMMENDED ITEM 113 RATING = 3, SCOUR CATEGORY = D.								
EVALUATION TYPE :													
[ITEM 71] WATERWAY ADEQUACY: DECK/APPRCH OVERTOP SLGT					COMMENTS:								
RATING : 05/18/2001													
[ITEM 72] APPRRDWY ALIGNMENT: 6-SATISFACTORY					COMMENTS:								
RATING : 05/18/2001													
***RAILING AND APPROACH PAVEMENT COMPONENTS AND RATINGS***													
[ITEM 36A] BRIDGE RAILING RATING: DOESNT MEET CURRNT STND-0					RATING : 02/23/2004		COMMENTS:						
<u>MATERIAL</u>		<u>CONSTRUCTION</u>		<u>DIRECTION</u>		<u>COMMENTS</u>							
REINFORCED CONCRETE		CURB		BOTH									
STEEL		ANGLE-DOUBLE		BOTH									
[ITEM 36B] TRANSITION RAILING RATING: NOT PROVIDED-0					RATING : 05/18/2001		COMMENTS:						
Design_No = P0803													
Page 2													
This report contains information that is protected from disclosure by federal law, 23 USC Section 409 and the Missouri Open Records Law (Sunshine Act), Section 610.021 RSMo. Please review MoDOT's policy and procedure manual on the Sunshine Act before releasing any of the information contained herein.													

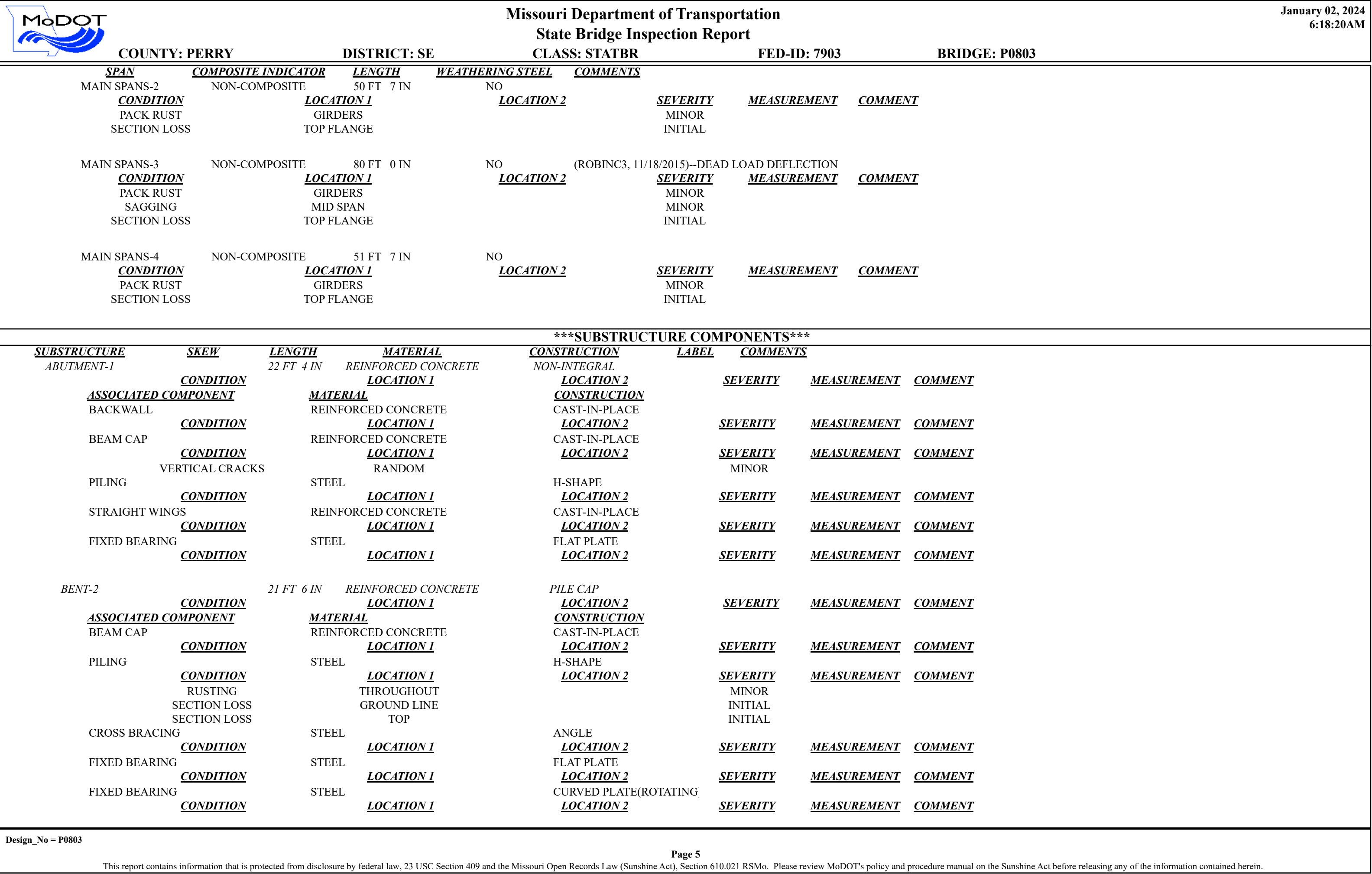




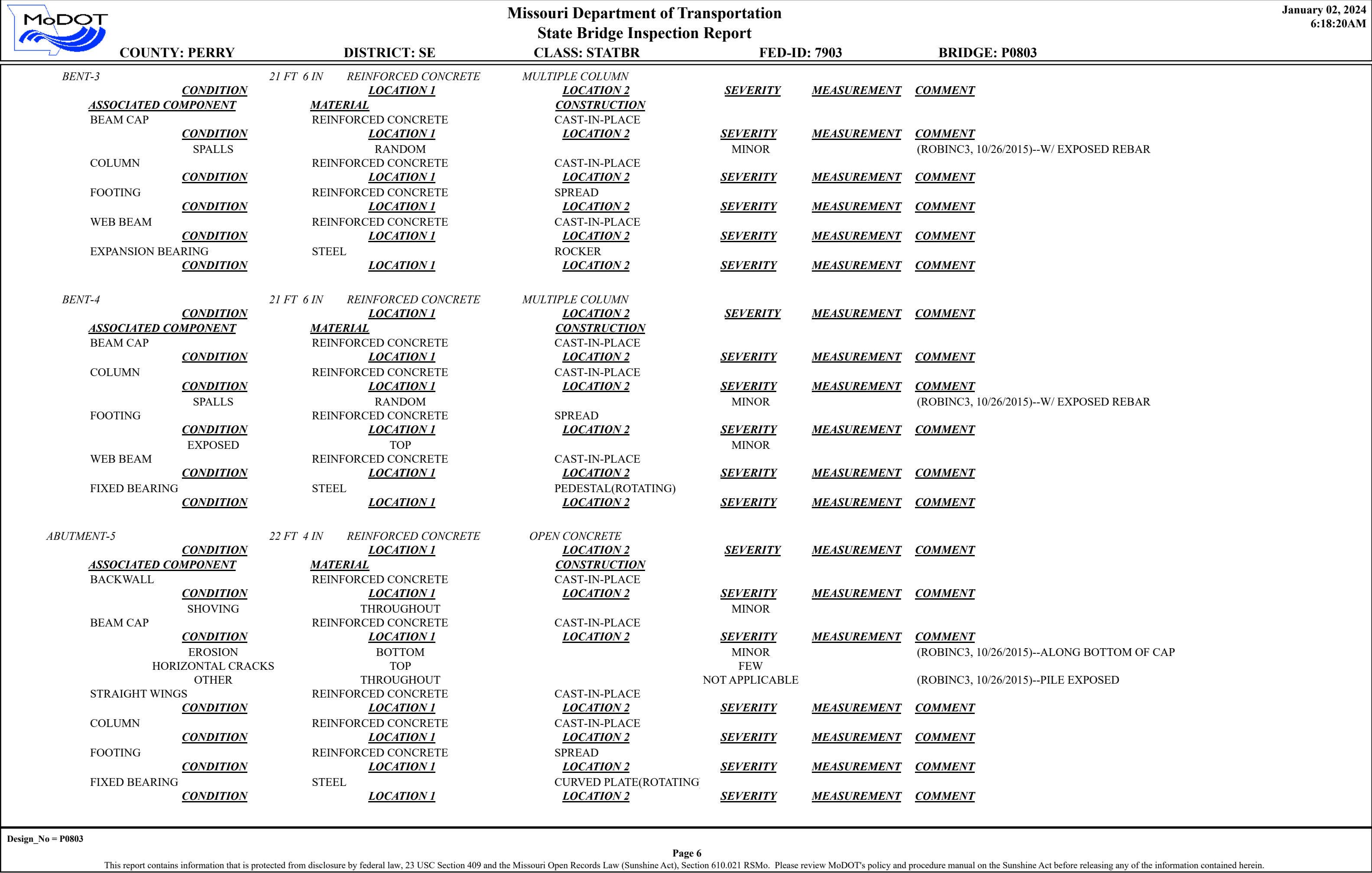
















		<div>Missouri Department of Transportation</div> <div>State Bridge Inspection Report</div>				<div>January 02, 2024</div> <div>6:18:20AM</div>			
COUNTY: PERRY		DISTRICT: SE		CLASS: STATBR		FED-ID: 7903		BRIDGE: P0803	
***OVER/UNDER ROUTES CLEARANCE INFORMATION***									
<div><div><div>CLEARANCES OVER DECK</div><div><div>VERTICAL CLEARANCE TYPE**</div><div>VALUE</div><div>DIRECTION</div><div>DATE</div><div>COMMENT</div></div></div><div><div>**NOTE: Vertical clearances for permitting purposes are taken as 2 inches less than the actual field measured clearance.</div></div></div>									
<div><div><div>CLEARANCES UNDER BRIDGE</div><div><div>RECORD #</div><div>ROUTE</div><div># LANES</div><div>DIRECTION OF TRAFFIC</div><div>RIGHT LATERAL CLEARANCE</div><div>LEFT LATERAL CLEARANCE</div><div>UR-ID</div></div></div><div><div>**NOTE: Vertical clearances for permitting purposes are taken as 2 inches less than the actual field measured clearance.</div></div></div>									
<div><div><div>VERTICAL CLEARANCE TYPE**</div><div>VALUE</div><div>DIRECTION</div><div>DATE</div><div>COMMENT</div></div></div>									
***STRUCTURE PAINT INFORMATION***									
<div><div><div>CONDITION:</div><div>FAIR</div></div><div><div>RUST AMOUNT :</div><div>7 = .2% OF SURFACE RUSTED</div></div><div><div>STEEL TONS :</div><div>54</div></div></div> <div><div><div><div><div><u>ORIGINAL PAINT</u></div><div>PAINT TYPE :</div><div>NAME :</div><div>PAINT COLOR :</div><div>PAINT YEAR :</div><div>MILS :</div></div><div><div><u>CONTRACT REPAINT</u></div><div>PAINT TYPE : S SYSTEM</div><div>NAME : CAL SULPH/LEAD PAINT</div><div>PAINT COLOR : GRAY</div><div>PAINT YEAR : 2000</div><div>MILS : 9</div></div><div><div><u>DEPARTMENT REPAINT</u></div><div>MANUFACTURE :</div><div>SURFACE PREP :</div></div></div></div></div>									
***REQUESTED WORK ITEMS***									
GENERAL WORK COMMENTS:									
<div><div>RESPONSIBILITY</div><div>LOCATION</div><div>ITEM</div><div>CATEGORY</div><div>PRIORITY</div><div>DATE</div><div>WORK ITEM COMMENT</div></div>									
***UTILITY ATTACHMENTS***									
<div><div>UTILITY</div><div>OWNER</div><div>METHOD</div><div>MEASUREMENT TYPE</div><div>VALUE</div><div>NUMBER</div><div>UTILITY ATTACHMENT COMMENT</div></div>									
<div>Design_No = P0803</div> <div>Page 7</div> <div>This report contains information that is protected from disclosure by federal law, 23 USC Section 409 and the Missouri Open Records Law (Sunshine Act), Section 610.021 RSMo. Please review MoDOT's policy and procedure manual on the Sunshine Act before releasing any of the information contained herein.</div>									



		<div>Missouri Department of Transportation</div> <div>State Bridge Inspection Report</div>			<div>January 02, 2024</div> <div>6:18:20AM</div>																																						
COUNTY: PERRY		DISTRICT: SE	CLASS: STATBR	FED-ID: 7903	BRIDGE: P0803																																						
***PROGRAM NOTES INFORMATION***																																											
<div>YEAR</div> <div>2025</div>	<div>PROJECT #</div> <div>SE0056</div>	<div>MONTH LET</div> <div>1</div>	<div>YEAR LET</div> <div>2025</div>	<div>ITEMS</div> <div>REPLACE BRIDGE</div>	<div>COMMENT</div>																																						
***COMPUTER GENERATED RATINGS AND DEFICIENCY ITEMS***				***ADVANCED SIGN INFORMATION***																																							
<div>NOTE: The items listed in this section are updated whenever computer edits are ran on a structure after the inspection updates have been entered in to TMS.</div> <table><tr><td><div>Rated Item</div></td><td><div>Rating</div></td><td><div>Rating Date</div></td></tr><tr><td>[Item 67] Structure Evaluation Rating:</td><td>4-MEETS MINIMUM TOLERABLE</td><td>3/26/2002</td></tr><tr><td>[Item 68] Deck Geometry Rating:</td><td>2-BASICALLY INTOLRBLE REQ</td><td>4/13/2015</td></tr><tr><td>[Item 69] Underclearance:</td><td>N-NOT APPLICABLE</td><td>5/18/2001</td></tr><tr><td>Sufficiency Rating:</td><td>49.6%</td><td>3/2/2023</td></tr><tr><td>Deficiency:</td><td>FUNCTIONAL</td><td>3/26/2002</td></tr><tr><td>Funding Eligibility:</td><td></td><td>----</td></tr><tr><td>Estimated New Structure Length:</td><td></td><td>----</td></tr><tr><td>Estimated Structure Cost:</td><td></td><td>----</td></tr><tr><td>Estimated Total Project Cost:</td><td></td><td>----</td></tr><tr><td>Year of Cost Estimate:</td><td></td><td>----</td></tr></table> <div>NOTE: The above structure length and cost estimates are computer generated using algorithmis in the TMS system. These algorithmis are generalized to use NBI items to come up with a new structure length and width to calculate a new area which is taken times a representative cost per square foot. The actual structure size and cost may vary significantly from these numbers once site specific engineering is done.</div>				<div>Rated Item</div>	<div>Rating</div>	<div>Rating Date</div>	[Item 67] Structure Evaluation Rating:	4-MEETS MINIMUM TOLERABLE	3/26/2002	[Item 68] Deck Geometry Rating:	2-BASICALLY INTOLRBLE REQ	4/13/2015	[Item 69] Underclearance:	N-NOT APPLICABLE	5/18/2001	Sufficiency Rating:	49.6%	3/2/2023	Deficiency:	FUNCTIONAL	3/26/2002	Funding Eligibility:		----	Estimated New Structure Length:		----	Estimated Structure Cost:		----	Estimated Total Project Cost:		----	Year of Cost Estimate:		----	<table><tr><td><div>SIGN #</div><div>1</div></td><td><div>SIGN TYPE</div><div>YIELD TO ONCOMING TRAFFIC</div></td><td><div>PROBLEM</div><div>ADD SIGN</div></td><td><div>PROBLEM DIRECTION</div><div>BOTH</div></td></tr></table>			<div>SIGN #</div> <div>1</div>	<div>SIGN TYPE</div> <div>YIELD TO ONCOMING TRAFFIC</div>	<div>PROBLEM</div> <div>ADD SIGN</div>	<div>PROBLEM DIRECTION</div> <div>BOTH</div>
<div>Rated Item</div>	<div>Rating</div>	<div>Rating Date</div>																																									
[Item 67] Structure Evaluation Rating:	4-MEETS MINIMUM TOLERABLE	3/26/2002																																									
[Item 68] Deck Geometry Rating:	2-BASICALLY INTOLRBLE REQ	4/13/2015																																									
[Item 69] Underclearance:	N-NOT APPLICABLE	5/18/2001																																									
Sufficiency Rating:	49.6%	3/2/2023																																									
Deficiency:	FUNCTIONAL	3/26/2002																																									
Funding Eligibility:		----																																									
Estimated New Structure Length:		----																																									
Estimated Structure Cost:		----																																									
Estimated Total Project Cost:		----																																									
Year of Cost Estimate:		----																																									
<div>SIGN #</div> <div>1</div>	<div>SIGN TYPE</div> <div>YIELD TO ONCOMING TRAFFIC</div>	<div>PROBLEM</div> <div>ADD SIGN</div>	<div>PROBLEM DIRECTION</div> <div>BOTH</div>																																								
				***OUTFALL INSPECTION INFORMATION***																																							
				<div># OUTFALLS:</div> <div>INSPECTOR:</div> <div>STATUS:</div> <div>DATE:</div> <div>NOTES:</div>																																							

Design\_No = P0803

Page 8

This report contains information that is protected from disclosure by federal law, 23 USC Section 409 and the Missouri Open Records Law (Sunshine Act), Section 610.021 RSMo. Please review MoDOT's policy and procedure manual on the Sunshine Act before releasing any of the information contained herein.





Missouri Department of Transportation  
Bridge Inventory and Inspection System  
Structural Inventory & Appraisal Sheet

January 2, 2024  
6:15:41am

COUNTY : PERRY BRIDGE : P0803 REVIEW STATUS : APPROVED NBI STATUS : T  
RECORD TYPE : ROUTE CARRIED 'ON' STRUCT RUN DATE : 12/7/2023 SUBMITTAL YEAR : 2023

GENERAL STRUCTURE INFORMATION			ROUTE DESIGNATION INFORMATION		
1	State	MISSOURI	5A	Record Type	ROUTE CARRIED 'ON' STRUCT
2	District	SE	5B	Route Signing Prefix	MO
3	County	PERRY	5C	Designated Level of Service	MAINLINE
8	Federal ID No.	7903	5D	Route Number	0000C
27	Year Built	1955	5E	Directional Suffix	NOT APPLICABLE
106	Year Reconstructed	0	7	Facility Carried	RT C S
42A	Type of Service On	HIGHWAY	12	Base Hwy. Network	NO
21	Structure Maintenance	STATE HIGHWAY AGENCY	13A	LRS Inventory Route No.	
22	Structure Owner	STATE HIGHWAY AGENCY	13B	Subroute No.	
33	Br. Median Code	NO MEDIAN	20	Toll Status	ON FREE ROAD
37	Historical Significance	NOT ELIGIBLE FOR NR OF HP	26	Functional Classification	07-RURAL MAJOR COLLECTOR
101	Parallel Struc Desg	NONE EXISTS	28A	Lanes on Structure	01
103	Temporary Structure	NOT TEMPORARY	100	STRAHNET Designation	RTE NOT A DEFENSE HWY
112	NBIS Bridge Length	YES	104	National Highway System	NOT ON NHS
			105	Federal Lands Highway	NOT APPLICABLE
			110	Designated Nat. Network	NO
STRUCTURE LOCATION INFORMATION			STRUCTURE TRAFFIC INFORMATION		
4	Place	BRAZEAU	29	AADT	1189
	Code	08092	30	AADT Year	2022
9	Location	S 4 T 33 N R 13 E	102	Direction of Traffic	ONE LANE BRIDGE FOR 2-WAY
11	Milepoint	28.06 miles	109	AADT Truck Percent	11%
16	Latitude	37 D 35 M 29 S	114	Future AADT	1665
17	Longitude	89 D 36 M 11 S	115	Future AADT Year	2042
UNDERRECORD INFORMATION			STRUCTURE GEOMETRIC INFORMATION		
6	Features Intersected	APPLE CR	10	Inventory Rte. Vert. Clear	99 Ft. 99 In.
42B	Type of Service Under	WATERWAY	19	By pass Detour Length	24.38 miles
28B	Lanes Under Structure	00	32	Approach Roadway Width	20 Ft. 0 In.
54A	Vert. Clearance Ref.	N/A	34	Skew	0.00 Degrees
54B	Vert. Clearance	0 Ft. 0 In.	35	Struct. Flared	NO
55A	Rt. Lat Clear Ref.	N/A	47	Total Horiz. Clear	20 Ft. 0 In.
55B	Rt. Lat Clearance	0 Ft. 0 In.	48	Maximum Span Length	80 Ft. 1 In.
56	Left Lat Clearance	0 Ft. 0 In.	49	Structure Length	208 Ft. 0 In.
38	Navigation Control	PERMIT NOT REQ	50A	Left Curb/Sidewalk Width	0 Ft. 0 In.
39	Nav Vertical Clear	0 Ft. 0 In.	50B	Right Curb/Sidewalk Width	0 Ft. 0 In.
40	Nav Horizontal Clear	0 Ft. 0 In.	51	Curb to Curb Br. Width	20 Ft. 0 In.
111	Nav. Pier Protection		52	Deck Width (Out-Out)	22 Ft. 4 In.
116	Nav. Cl. Vert. Clear		53	Vert. Clearance Over Deck	99 Ft. 99 In.

Design\_No = P0803 and Inventory\_Appraisal\_Submittal\_Year = 2023





Missouri Department of Transportation  
Bridge Inventory and Inspection System  
Structural Inventory & Appraisal Sheet

January 2, 2024  
6:15:41am

COUNTY : PERRY BRIDGE : P0803 REVIEW STATUS : APPROVED NBI STATUS : T  
RECORD TYPE : ROUTE CARRIED 'ON' STRUCT RUN DATE : 12/7/2023 SUBMITTAL YEAR : 2023

LOAD RATING AND POSTING INFORMATION			MATERIAL/CONSTRUCTION INFORMATION		
31	Design Load	H 10	43A	Main Struc. Mat type	STEEL CONTINUOUS
41	Structure Status	POSTED FOR LOAD	43B	Main struc Constr. Type	STRINGER/MULTIBEAM - GRD
63	Oper. Rating Meth.	LOAD FACTOR	45	# of Main Spans	4
64	Operating Rating	24 Tons.	44A	Appr Struc. Mat type	000
65	Inventory Rating Meth	LOAD FACTOR	44B	Appr Struc. Cnstr. type	000
66	Inventory Rating	14 Tons.	46	# of Approach Span	0
70	Bridge Posting Code	30.0-39.9% BELOW	107	Deck Mat/Constr.	1 CONCRETE CIP
PROPOSED IMPROVEMENT INFORMATION			108A	Wear Surf Mat/Constr.	6 BITUMINOUS
Sufficiency Rating 49.6 Percent			108B	Membrane Mat/Constr.	0 NONE
Deficiency Rating FUNCTIONAL			108C	Deck Protect Mat/Constr.	0 NONE
Funding Eligibility FULL			CONDITION RATING INFORMATION		
75A	Proposed Work	REPLACEMENT SUBSTND LOAD	58	Deck Cond. Rating	5
75B	Work Done By	Contract	59	Superstructure Cond. Rating	5
76	New Struc Length	242 Ft. 9 In.	60	Substructure Cond. Rating	6
94	Struc Improve Cost	\$ 1,409,000	61	Channel /Channel Protection Cond. Rating	5
95	Roadway Improve Cost	\$ 141,000	62	Culvert Cond. Rating	N
96	Total Project Cost	\$ 2,114,000	INSPECTION INFORMATION		
97	Year of Cost Estimates	2023	90	Gen. Insp Date	10 / 23
APPRAISAL RATING INFORMATION			91	Gen. Insp. Frequency	24 Months
36A	Br. Rail App. Rating	DOES NOT MEET ACCEPT STND	92A	Frac. Critical Inspection	N Months
36B	Transition Rail App. Rating	DOES NOT MEET ACCEPT STND	93A	Frac. Critical Insp. Date	
36C	Approach Rail App. Rating	DOES NOT MEET ACCEPT STND	92B	Underwater Inspection	N Months
36D	Rail End Treat. App. Rating	DOES NOT MEET ACCEPT STND	93B	Underwater Insp. Date	
67	Struc Eval App. Rating	4	92C	Special Inspection	N Months
68	Deck Geometry App. Rating	2	93C	Special Inspection Date	
69	Underclearance App. Rating	N	BORDER BRIDGE INFORMATION		
71	Waterway Adeq. App. Rating	6	98	Neighboring State Code	
72	Approach Road App. Rating	6	98B	Neighboring State % Respon	
113	Scour Assess App. Rating	3	99	Neighboring State Struc. No.	
APPROVED POSTING INFORMATION			FIELD POSTING INFORMATION		
Approved Posting Category S-5			Field Posting Category S-5		
Ton1 Ton2 Ton3			Ton1 Ton2 Ton3		
Tonnage Values for Posting Sign 15			Tonnage Values for Posting Sign 15		
General Text for Posting Sign			General Text for Posting Sign		
CENTERLINE OF BRIDGE AND TRUCKS OVER 15 TONS 15 MPH ON BRIDGE.			CENTERLINE OF BRIDGE AND TRUCKS OVER 15 TONS 15 MPH ON BRIDGE.		

Design\_No = P0803 and Inventory\_Appraisal\_Submittal\_Year = 2023