

LETTER OF INTEREST

October 27, 2023

Missouri Department of Transportation
LPAoncall@modot.mo.gov

2400 Pershing Road | Suite 400
Kansas City, MO, 64108
Tel 816.329.8600
Fax 816.329.8701
www.transystems.com

Re: 2023-2026 LPA On-Call Solicitation - Multimodal Planning/Systems and Facilities Design

Dear Selection Committee:

TranSystems would like to be considered for the 2023-2026 on-call contract for LPA Multimodal Planning/Systems and Facilities Design with MoDOT. We are committed to serving local entities and MoDOT to “provide a world-class transportation system that is safe, innovative, reliable, and dedicated to a prosperous Missouri” as we partner together for the next three years. We are prequalified with MoDOT E-Verify and LPA Basic Training.

GENERAL EXPERIENCE OF FIRM

TranSystems started more than 57 years ago is now one of the top engineering firms in the country, ranked #4 in Transportation and #9 in Missouri Design Firms in the Midwest by ENR in 2023. Our staff has decades of experience related to rail planning and design, port planning and design, transit planning, grant writing and grant administration.

PAST PERFORMANCE

St. Louis Merchants Bridge Reconstruction | TRRA

Led the NEPA process, permitting and compliance. Lead project engineer for removal and replacement of the three river-span trusses. TranSystems received the Grand Conceptor award from Missouri ACEC and the AREMA Hay Award for Excellence for this project.

Rail Program Support | MoDOT Multimodal

Provide support for the highway-rail safety improvement program beginning in 2022. Under this contract, TranSystems represents MoDOT on local-agency-led safety crossing projects to ensure all federal policy and MoDOT EPG section 136 are met, provides grant development and oversight for projects funded by FHWA and FRA, and provides engineering assistance, concept review and estimates on potential projects.

Plans, Specifications, and Cost Estimates for Highway-Rail Grade Crossings | TxDOT

Developed PS&E for highway-rail crossing signals and civil rehabilitation projects at 50 crossings.

Grade Crossing Improvements Grant Application | TxDOT

This CRISI grant application sought additional funding to address deficiencies at the grade crossing when local bond funding was insufficient. Due to TranSystems’ ongoing work with the FRA, our team knew that vertical profile deficiencies were on the priority list to address nationwide and emphasizing that point was vital to secure funding for this project. This project was awarded approximately \$1.7 million from the FY 2020 CRISI program.

WORKPLACE DIVERSITY

TranSystems values the contributions of all people and created an open and inclusive work environment. Specific training and messaging on diversity are part of our practice. Our corporate and company-wide diversity initiative is showing results in both our work place culture and our staff diversity. We seek diverse employees as we hire and build our project teams with diverse staff members to reflect Missouri residents. Our employees are active in our communities promoting engineering and diversity to school children, college students and the general public.

LETTER OF INTEREST

BUILD Grant Application for America's Central Port | Southwest Regional Port District & St. Louis City Port Authority

Prepare BUILD grant application to construct new rail track, new terminal access roadway, modernize barge loading equipment, and conveyor system to improve ports, terminals, roads and rail in the St. Louis Metropolitan area. Provide pre- and post-obligation support to the ports. This project was awarded \$20.8 million.

Port Planning and Design | Port KC

Provide design and contract administration for port and rail infrastructure projects at Woodswether Terminal in Kansas City. Infrastructure projects included material domes, lighting, mooring dolphins, site grading, winch and dock improvements. Provide site planning and design for new Missouri River Terminal facility including rail, road and port improvements.

Grant Development and Grant Management | TxDOT

Project management for the comprehensive grant application process including engineering analysis, risk assessment, financial analysis to demonstrate justification and options for specific projects, benefit-cost analysis, and preparation of final application.

Hialeah Freight & Mobility Plan | Florida DOT

Support FDOT in evaluating freight corridors within the City of Hialeah and adjacent areas to determine viable solutions that enhance connectivity, mobility, and minimize conflicts for freight transportation.

Additional Firm Experience is incorporated in the following Qualifications of Personnel Section

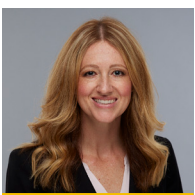
- Kansas State Freight & Rail Plans
- Texas Freight Mobility Plan
- Port of Catoosa Rail Siding & Capacity Improvements (OK)
- Herculaneum Site Feasibility Analysis (MO)
- Arizona State Rail Framework Study
- FRA Oversight for Local Grantees Program
- South Florida Rail Corridor Master Plan
- El Paso Pedestrian Mobility Study
- Appalachian Council of Governments Freight Plan (SC)
- OATS Regional Feasibility Studies (MO)
- Joplin Transit System Analysis (MO)

QUALIFICATIONS OF PERSONNEL



Michelle Kratzer, PE, PTOE *Project Manager*

Michelle is the Midwest Integrated Services Division Leader for TranSystems. She brings more than 27 years of experience with the Missouri Department of Transportation (MoDOT) including more than ten years as their Multimodal Operations Director. Michelle's rail planning and analysis experience includes the Kansas State Freight Plan and Rail Plan, Texas Freight Mobility Plan, senior advisor for the Texas Section 130 Program Analysis, lead grant writer and contributor on three recently funded FY22 Railroad Crossing Elimination Grants for TxDOT totaling over \$41.6 million, and directing work on successful BUILD, CRISI and INFRA applications. She brings additional modal freight expertise through work supporting the Northwest Indiana RPC freight plan developing concepts and cost estimates for key implementation plan components and as the lead engineer for the Miami-Dade County assessment of freight travel patterns analyzing freight transportation systems, cargo flow maps and developing infrastructure investment recommendations.



Jessica Smith, PE

Jessica has 13 years of experience, including eight at Union Pacific, and is the Midwest Government Division Leader with the firm. At UP, she was the Senior Manager of new Construction and Signal Planning, Senior Manager of Structures Planning, and Senior Manager of Structures Design. At TranSystems her areas of concentration include railroad capacity improvements, terminal facilities, mechanical facilities and bridge replacement projects. Jessica's experience includes project manager for the UP Railroad Accelerated Sidings in Texas, New Mexico and Oklahoma to accelerate nine extension projects and the Port of Catoosa Oklahoma Rail siding and capacity improvements.

LETTER OF INTEREST



Barb Frost, PE

Barb has more than 27 years of experience in transportation planning and environmental analysis with TranSystems, St. Louis RCGA, and MoDOT. Her experience includes leading transportation research efforts, conducting corridor studies, NEPA analysis for multimodal projects, leading the Metrolink South Extension Analysis for East West Gateway and leading the Herculaneum Site Feasibility Analysis for Jefferson County Port Authority evaluating the site for a large multimodal freight hub potential. Barb was a key member of the Merchants Bridge project.



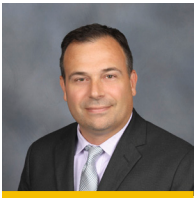
Sarah Frost, AICP

Sarah leads the Kansas City Program Management Team at TranSystems. Her 18 years of experience includes the Arizona State Rail Framework Study evaluating and formulating rail development and investment strategies to promote a sustainable multimodal transportation system for the movement of people and goods as well as multiple public transportation feasibility and analysis studies. She served as the lead planner for the OATS Regional Feasibility Studies across Missouri.



Frank Weatherford, PE

Frank is a principal at TranSystems with more than 40 years of experience specializing in state departments of transportation, municipal transportation engineering, innovative financing and program management. He serves as the principal-in-charge of civil engineering projects.



Ryan McClure

Ryan has 16 years of experience in transportation planning working with local and regional municipalities on comprehensive planning and infrastructure investments. He has worked on multiple freight plans including those for the South Carolina Appalachian Council of Governments and the Berkeley-Charleston-Dorchester South Carolina Council of Governments. Ryan is part of the team developing the strategic master plan for the South Florida Rail Corridor which includes the Tri-Rail Commuter Service, the Amtrak intercity service and the CSX freight operations.



Andrew Young, AICP

Andrew has both public and private planning experience. He brings valuable skills in GIS analysis, communication, and graphics, as well as public engagement strategies to support planning initiatives. Andrew authored the Environmental Justice chapter, prepared a purpose and need chapter as well as figure preparation using ArcGIS for the final EIS of the Chicago Red Line Extension project. He also managed the data, assisted with the inventory and analysis of railroad crossings and created GIS maps for the Metroplex Freight Mobility Study in Dallas/Fort Worth Texas to review potential impacts to freight mobility due to future TxDOT projects.



Emma Martin, PE

Emma is a traffic engineer and planner. In addition to her traffic design work, she works on grant writing, safety studies, and corridor studies. Emma analyzed five years of highway-rail incident data and preparing a report identifying key strategies to improve safety at highway-rail crossings for both the Missouri and Kansas Highway Rail Grade Crossing State Action Plan. She is also analyzing mobility needs at the Texas Tech campus in El Paso, Texas.

FAMILIARITY/CAPABILITY

Our staff are familiar with MoDOT's standards, documentation process and software. Our team is certified in the LPA process and fully-versed in design requirements defined in the EPG, AREMA, MUTCD and by USDOT.

ACCESSIBILITY

Missouri communities and agencies are an important client for TranSystems, especially for our Kansas City and St. Louis offices. We make our team available to our clients 24/7 to identify feasible options for consideration. Our modal experts work with our clients to arrive at a solution that works for their future plans as well as the immediate needs for safely and efficiently moving people and freight.

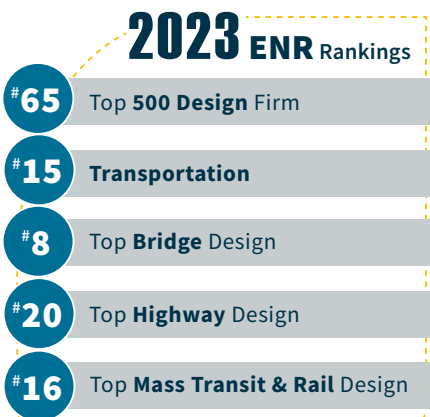
ENHANCING THE TRANSPORTATION NETWORKS AND INFRASTRUCTURE THAT MAKES COMMUNITIES MORE LIVABLE



FOUNDED IN 1966

More than **1,700** employees | **60** offices
Headquarters: **Kansas City, Missouri**

C O R E V A L U E S



ALL-IN, ALWAYS

Whether it's for our clients, or our colleagues, we're committed to delivering excellence, every time.



PASSIONATE PROBLEM SOLVERS

We're passionate about working together to find outstanding solutions for the challenges our clients and communities face.



DRIVEN TO SERVE

Service to others is at our core. We act with integrity to advance our communities, our team, our company, and our profession.

S E R V I C E S

- Alternative Delivery
- Architecture
- Asset Management
- Bridge Design & Inspection
- Building Engineering & Structural
- Construction Engineering, Inspection & Management
- Environmental & Permitting
- Geospatial Technology
- Housing and Relocation
- Hydraulics & Hydrology
- Intermodal & Automotive Facilities

- Logistics & Operations Planning
- Marine & Industrial
- Master Planning & Land Development
- Program Management
- Railroad Design
- Real Estate & Right-of-Way Acquisition
- Roadway and Highway Design
- Site Civil Engineering
- Survey & Asset Management
- Traffic Engineering
- Transit Planning & Design
- Transportation Planning

MARKET SECTORS



AVIATION

Leader in providing general aviation and landside services; top provider of consolidated rental car facilities



FEDERAL

Delivering facilities and infrastructure improvements for multiple federal agencies



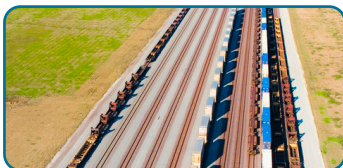
GOVERNMENT

Serving state DOTs and local municipalities in 18 states



TRANSIT

Serving more than 125 transit clients



FREIGHT

Top provider to Class I railroads as well short line railroads, ports, manufacturers and distributors



GRANT WRITING

Helping communities secure and administer discretionary funding

CELEBRATING 57 YEARS OF SERVICE

In 1966, Herbert Johnson, Gerald Brickell, and Edward Mulcahy formed JBM Associates Engineers and Planners as traffic experts to help Missouri communities adapt to its growing transportation demands. The company was re-branded under TranSystems. This name change was done to focus as a firm on transportation. By having all of our focus on transportation – we do it better.

Since then, TranSystems has expanded to offer transportation services encompassing the entire multimodal range, from roadway networks and passenger rail expansion to freight rail intermodal facilities and airport connections. This growth can be largely attributed to the outstanding engineering and planning services TranSystems has provided to Missouri communities, MoDOT and Midwest departments of transportations.

Today, TranSystems is a full service multimodal transportation consultant comprised of nearly 1,700 professionals in 60 offices across the nation. After 57 years of service, we are still proud to say our company is – and always has been – headquartered in Missouri.

DIVERSITY, EQUITY & INCLUSION

TranSystems is committed to embracing diversity in all forms, including race, culture, age, sexual orientation, gender, disability, veteran status, thought and religious background.

We acknowledge the impacts of prejudice and discrimination on historically underserved communities. We commit to establishing a more diverse, inclusive and positive work environment that drives innovation.

TranSystems' Diversity Action Council (DAC) works to ensure development, execution and communication of actions to sustain systems and processes within our firm to promote diversity, equity and inclusion.

QUALITY

At TranSystems, we have established and continue to nurture a culture that is committed to providing quality services for our clients. Through the services we provide, we are directly contributing to the success of our clients. We also recognize that providing quality services is essential to TranSystems' reputation and our success as a company. We develop a tailored quality plan for every project. We have not had a major change order caused by a TranSystems plan error in the last 20 years.



SAFETY

We are committed to performing all services in a manner that is both safe and in compliance with all applicable regulatory and client requirements. Through our commitment to Safety First – Excellence Every Day, we affirm to all our employees, clients, and the public, that we will continuously improve our practices in light of advances in technology and new understandings in safety, health and environmental science. All field staff are OSHA 30 trained and office staff are OSHA 10 trained.

RELATIONSHIPS

TranSystems has developed many deep relationships with the communities, government agencies and transportation stakeholders in Missouri. Our relationships with key individuals and our knowledge of transportation organizations in Missouri will help you reach your goals. For example, we have worked with every Class 1 railroad in Missouri as well as every environmental review agency in the state. Our 57 years of experience has taken us to every corner of Missouri and provided staff the opportunity to work with more than 100 communities. These relationships and knowledge are available for your on-call assignments.

CLIENTS INCLUDE

- » 37 State Departments of Transportation, 40 Metropolitan Planning Organizations and 250 municipalities
- » 6 Class I Railroads and 74 passenger rail and transit agencies and divisions
- » 30 ports, airports and marine authorities
- » 10 Federal agencies including FHWA, FRA, NAVFAC, and USACE

MISSOURI LPA EXPERIENCE

- Port Planning and Design at Port KC | Kansas City, MO
- Historic Kirkwood Train Station Rehabilitation | Kirkwood, MO
- BUILD Grant Application and Administration for Regional Ports | St. Louis, MO
- Merchants Bridge Reconstruction | St. Louis, MO
- I-29 & Mexico City Ave Interchange Construction Inspection | Platte County, MO
- Allenton Bridge Replacement over UPRR | Eureka, MO
- Royal Street Extension Owner's Rep | Harrisonville, MO
- I-49 Outer Road Conversion | Grandview, MO
- Rock Island Trail Design | Jackson County, MO
- Big Shoal Creek Trail | Kansas City, MO
- Chouteau and I-35 Interchange Construction Inspection | Kansas City, MO
- Missouri Highway Rail Grade Crossing State Action Plan Development

CONTACT INFORMATION

Frank Weatherford, PE
Principal/Sr. Vice President
816.830.6081
flweatherford@transystems.com

Michelle Kratzer, PE, PTOE
Midwest Integrated Services Division Leader
573.301.1852
mlkratzer@transystems.com

INLAND RIVER PORTS | IMPROVING CONNECTIVITY

TranSystems understands the inland river ports are vital component of the efficient movement of goods throughout the country. We have a vested interest in helping plan and develop infrastructure that will stand the test of time and enable our clients to reach their fullest potential. Our team of planners, designers, engineers, environmental scientists, and economists are equipped with decades of experience and lessons learned from successfully delivering projects and programs for inland river ports throughout the country. We stand ready to assist you with your infrastructure needs.

OUR SERVICES



WATERFRONT
STRUCTURAL



BUILDING
STRUCTURES



CONCEPTUAL &
FINAL DESIGN



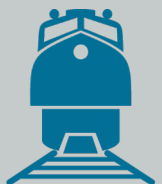
INDUSTRIAL
DEVELOPMENT



FEDERAL & STATE
GRANT ASSISTANCE



ENVIRONMENTAL
NEPA & PERMITTING



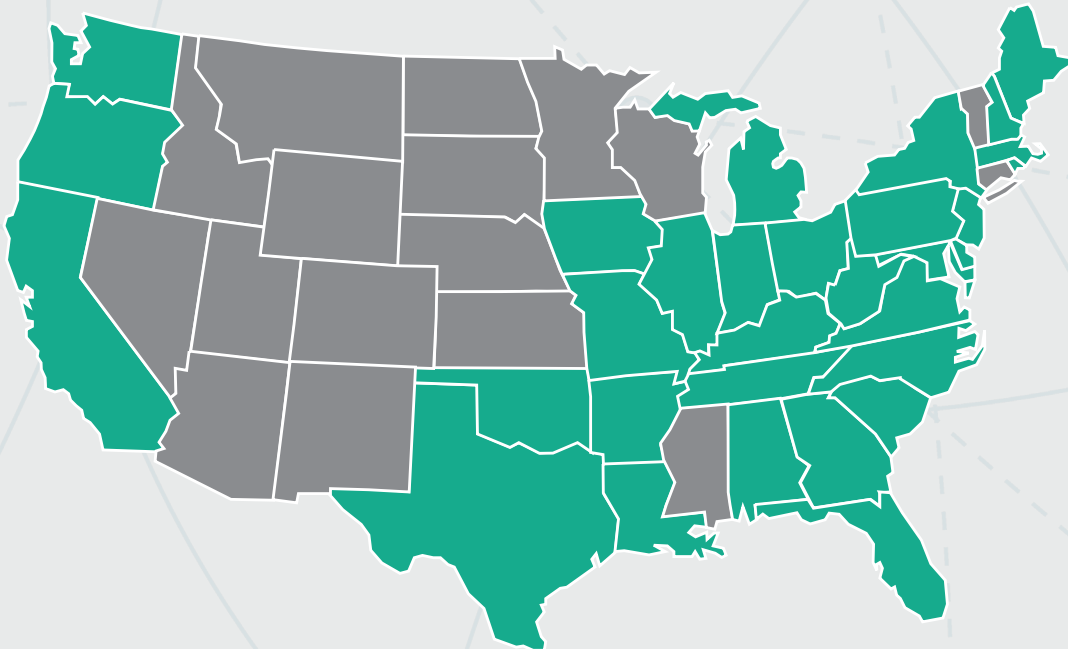
RAIL
DESIGN



RO/RO PLANNING
& DESIGN

MARINE & INDUSTRIAL EXPERTISE

The map below provides an overview of TranSystems' marine and industrial project experience where we've provided any of the services shown to the left. From grant writing and administration services, feasibility studies, and conceptual design — to final design and environmental clearance, we are committed to serving our clients and delivering quality projects.



A sampling of the clients and types of projects we've completed includes:

- **Port KC** | Chief Engineer Consultant *Kansas City, MO*
- **Mid-America Regional Council** | Port Risk Management Plan *Kansas City Area, MO/KS*
- **St. Charles County Port Authority** | Feasibility Study & Strategic Plan *Countywide, MO*
- **SCF Marine** | Awarded BUILD Grant Services *MO & IL*
- **Jefferson County Port Authority** | Feasibility Study & Port Master Plan *MO*
- **Jefferson County Port Authority** | Crystal City Market Study *Crystal City, MO*
- **Holcim Cement** | Slackwater Harbor/Barge Terminal Design *St. Genevieve, MO*
- **Doe Run Company** | Herculaneum Site Repurposing *Herculaneum, MO*
- **Chevron** | Lockport Site Development Study, Barge Operations Analysis *Lockport, IL*
- **Illinois International Port District** | Feasibility Study (Rail Expansion) *Chicago, IL*
- **Tradepoint Atlantic** | Inner Berth Structural Improvements *Baltimore, MD*
- **CertainTeed Gypsum** | Rail Loading Facility *Roxboro, NC*
- **Continental Building Products** | Barge Loading Station *Clifty Creek, KY*
- **PCL Construction Services** | Blending & Storage Facility *Silver Grove, KY*
- **ThyssenKrup** | Navigational Assessment *Tombigbee/Mobile/Mississippi River AL/LA*



CHERYL BALL, IMPM, EIT, JD
Senior Multimodal Planner

Cheryl brings more than 35 years of experience in engineering and planning at MoDOT. Her career included leadership roles in project development, operations, and administration. Cheryl's expertise includes alignment of federal planning documents, collaborative problem solving, and stakeholder engagement. She served 12 years as the Administrator for Freight and Waterways planning and seven years leading district and statewide roadway transportation planning efforts. Cheryl also served as the Vice Chair of the AASHTO Council on Water Transportation.



BARBARA FROST, PE
Multimodal Planner and NEPA

Barb's extensive experience in writing and reviewing environmental clearance documents (CE/CATEX, EA, EIS), for ports (MARAD), railroad (FRA), highway (FHWA) and transit (FTA) projects enables her to guide clients through the environmental requirements and permitting processes with ease. She is a trained facilitator with broad practical experience in the public and private sectors adept at public and stakeholder engagement as well as agency coordination. Barb has conducted a variety of qualitative and quantitative analyses for feasibility studies, strategic planning, and establishing a port authority, sharing her knowledge of project prioritization and program management. She has provided client assistance with successful federal funding applications including NEPA readiness.



JESSE LINDSAY, PE, LEED AP, DBIA
Marine and Industrial Market Sector Leader

Jesse leads TranSystems' Marine and Industrial Market Sector with 27 years of rich and diversified experience to the realm of civil engineering, with a distinct emphasis on waterfront projects and industrial facilities. He brings a wealth of knowledge derived from managing more than 300 assignments on current and previous MDOT MPA open-end contracts over the past quarter-century. Jesse stands as a key pillar in driving the success of marine engineering projects, exemplifying a dedication to quality, collaboration, and effective project management.

2023 ENR Rankings

#65

Top 500 Design Firm

#15

Transportation

#8

Top Bridge Design

#20

Top Highway Design

#16

Top Mass Transit & Rail Design

MORE THAN **1,800** EMPLOYEES
IN **65+** OFFICES NATION-WIDE

CORE VALUES



ALL-IN, ALWAYS

Whether it's for our clients, or our colleagues, we're committed to delivering excellence, every time.



PASSIONATE PROBLEM SOLVERS

We're passionate about working together to find outstanding solutions for the challenges our clients and communities face.



DRIVEN TO SERVE

Service to others is at our core. We act with integrity to advance our communities, our team, our company, and our profession.

PORT KC | ON-CALL CHIEF ENGINEER 2016 - PRESENT

TranSystems has served as the the Chief Engineer for Port KC providing consulting and engineering services, including conceptual, preliminary, and final project scopes, cost estimating, and design. Projects that have been completed in the duration of this contract include:

- Missouri River Terminal (MRT) Owners Representative
- MRT Roadway Planning and Design
- Governor Michael L. Parson Port Terminal Dock Design

MARYLAND PORT ADMINISTRATION (MPA) | ON-CALL MISC. ENGINEERING SERVICES 2018 - PRESENT

TranSystems, doing business as WBCM, provided engineering services for the MPA to pursue feasibility, engineering, and design for multiple facilities serving the Port on an as-needed basis. Tasks included various projects for Dundalk, North and South Locust Point, Masonville, and Fairfield Marine Terminals, Cruise Terminal, and the World Trade Center. The primary services included civil, structural, water resources, mechanical, electrical engineering, and architectural services. Projects under these contracts include:

Fairfield Marine Terminal

- Bulkhead Replacement
- Pier 4 Concrete Approach Slab Reconstruction

Masonville Marine Terminal

- Dredged Material Disposal Facility Drainage Design
- Kurt Iron Terminal Conceptual and Final Design
- Storm Drain and Drainage Design

Dundalk Marine Terminal

- Wharf and Mooring Inspection
- St. Helena Site Redevelopment
- Drainage Improvements
- Parking Lot and Structure Design
- Berths 11 and 12 Wharf Upgrades

Locus Point Marine Terminal

- Bulkhead Repair
- Fireston and Maintenance Building Demolition
- SLP Condition Assessment and Corrosion Studies
- Site Development

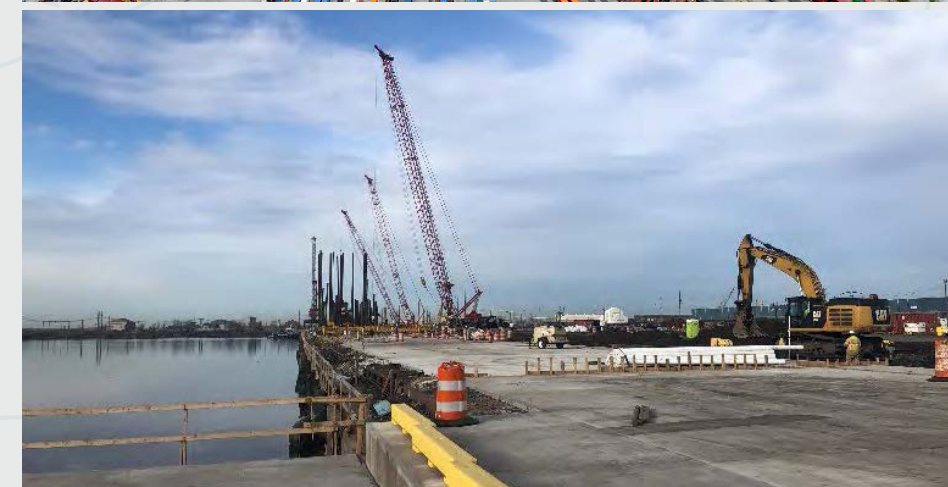
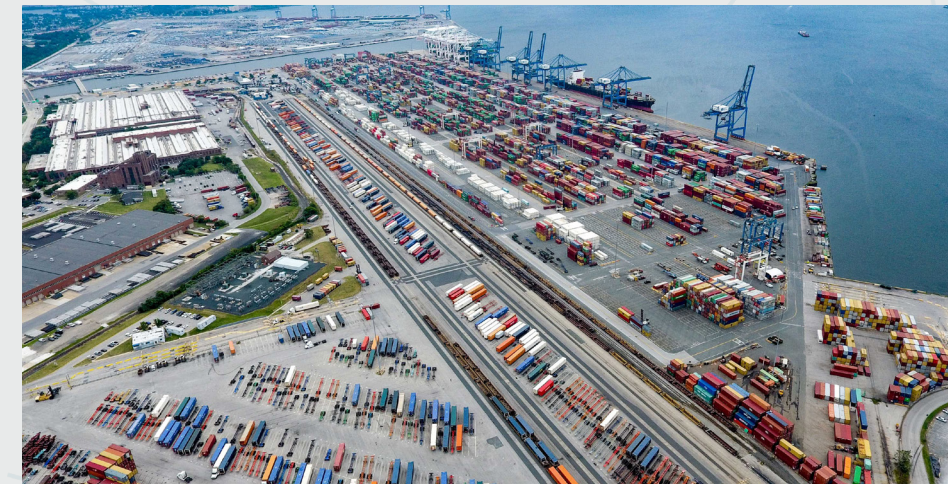
Agency-Wide

- MPA BUILD Grant Application Support
- Building Repairs
- Utility Upgrades Design and Construction Support
- High-Capacity Bollards
- Stormwater Management

AMPORTS | ON-CALL ENGINEERING SERVICES (ANTIOCH & BENICIA)

Antioch Vehicle Processing Facility | TranSystems supported the facilities development which involved redeveloping 35.8 acres of landside improvements, including site civil/grading, 25 acres of vehicle parking/storage capacity pavement, one 25,000-SF pre-engineered metal vehicle processing building, utility tie-in (electrical, water, etc.), shore-to-ship power, fire suppression, fencing, security cameras, and site lighting. The facility includes a pier conversion of the existing roll-on/roll-off operations.

Benicia Emergency Wharf Repairs | TranSystems provided planning, design, and permitting services to repair a burnt dock, along with construction management services. TranSystems was recently contracted by AMPORTS to provide design services through construction as a supplement to the work we already completed.

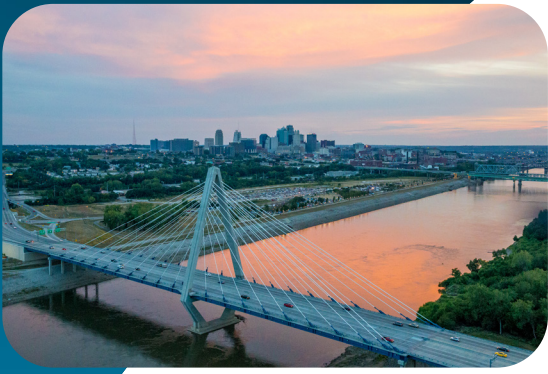


INFRASTRUCTURE SUPPORT TO KEEP GOODS MOVING **INLAND RIVER PORTS**

TranSystems recognizes the pivotal role that Inland River Ports play in driving economic vitality across the nation. As lifelines connecting vast regions, these ports serve as critical gateways for the efficient transport of goods, fostering economic growth, and enhancing supply chain resilience. Our comprehensive expertise encompasses a spectrum of services tailored to the unique needs of Inland River Ports, spanning environmental services, right of way considerations, rail design optimization, and the development of port infrastructure including docks and warehouses. We specialize in crafting strategic master plans that align with industry demands and contribute to sustainable growth. Moreover, our adept team is well-versed in industrial development assistance, providing invaluable guidance to clients navigating the complexities of project inception, securing federal grants, and managing the entire project life cycle through final design and construction.



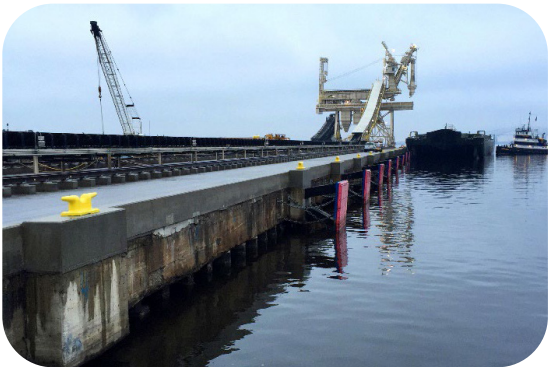
TRANSYSTEMS



SECURING FUNDING



IMPROVING CONNECTIVITY



PROMOTING GOODS MOVEMENT



TRANSYSTEMS' SERVICES INCLUDE:

- Market Analysis
- Feasibility Studies and Conceptual Design
- Industrial Site Planning and Design
- Waterfront Structural Design
- Building Structures
- Rail Coordination & Design
- Roadway and Structural Design
- Storm Water Management & Hydrology
- Operations Planning Analysis and Simulations
- Environmental/Permitting Coordination
- Utilities Coordination
- Federal & State Grant Writing & Administration

NOTABLE PROJECTS:

- Port KC On-Call Chief Engineer 2016 - 2023 *Kansas City, MO*
- Port KC MRT Road Planning and Design *Kansas City, MO*
- Port KC Governor Michael L. Parson Port Terminal Dock *Kansas City, MO*
- Port KC MRT Owners Representative 3P D/B *Kanas City, MO*
- St. Charles County Port Authority Feasibility & Strategic Plan *Countywide, MO*
- SCF Marine Awarded BUILD Grant Services *Granite City & East St. Louis, IL and St. Louis, MO*
- Jefferson County Port Authority Crystal City Market Study *Crystal City, MO*
- Jefferson County Port Authority Feasibility Study & Port Master Plan *Countywide, MO*
- Doe Run Company Herculaneum Site Repurposing *Herculaneum, MO*
- Illinois International Port District Feasibility Study (Rail) *Chicago, IL*
- Tradepoint Atlantic Inner Berth Structural Improvements *Baltimore, MD*
- MPA On-Call Misc. Engineering Services *Baltimore, MD*
- CertainTeed Gypsum Rail Loading Facility *Roxboro, NC*
- Tradepoint Atlantic Inner Berth Structural Improvements *Baltimore, MD*
- Continental Building Products Barge Loading Station *Clifty Creek, KY*



Cheryl Ball

crball@transystems.com



Barb Frost, PE

bgfrost@transystems.com