



# I-55 Corridor Improvements Design-Build Project

---

Elected Officials/Community Information Group  
November 16, 2023

# Project Location

MISSOURI



# Purpose & Need: Safety

- One of the heaviest traveled interstates in Missouri
- I-55: 70,000 ADT, US 67: 35,000 ADT
- I-55: 16% heavy trucks, US 67: 8.6% heavy trucks

2017-2021 I-55 Crash Data	
TYPE	ALL CRASHES
Fatal	6
Serious/Disabling	24
Minor	153
PDO	665
<b>TOTAL</b>	<b>848</b>

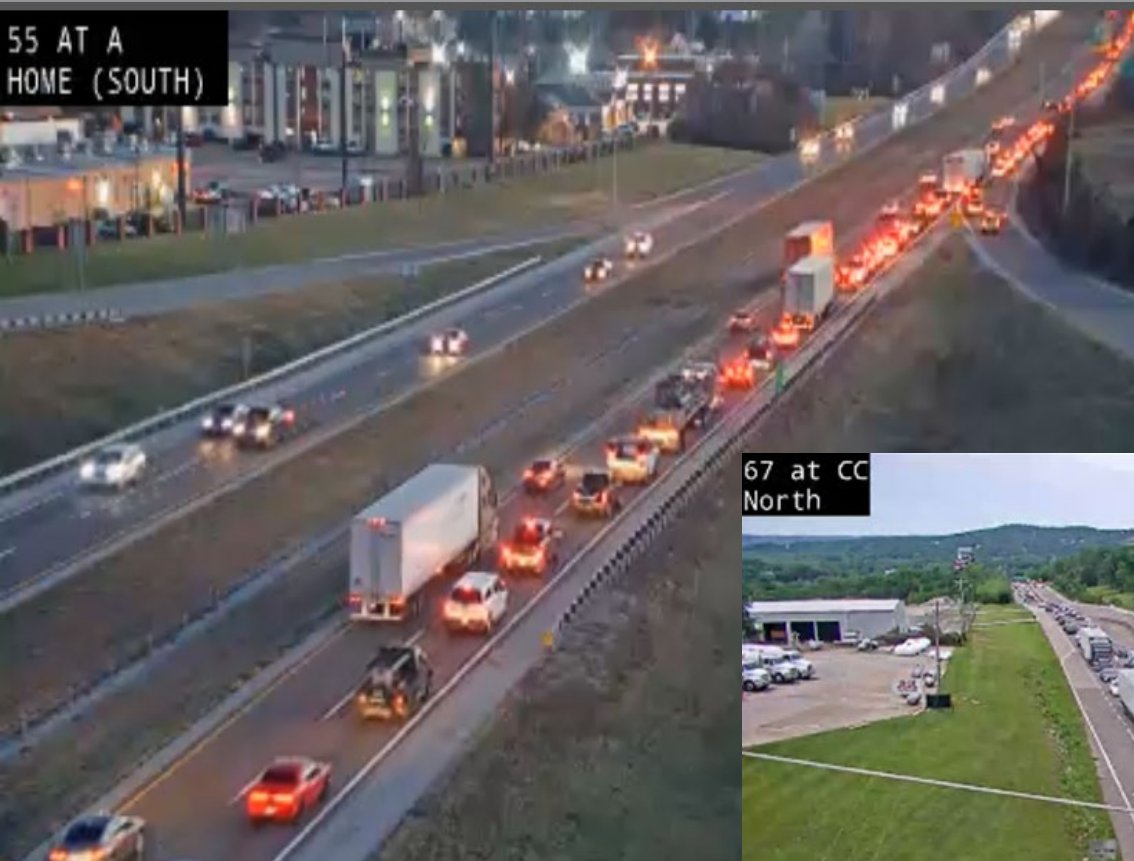
2017-2021 US 67 Crashes Data	
TYPE	ALL CRASHES
Fatal	2
Serious/Disabling	6
Minor	61
PDO	207
<b>TOTAL</b>	<b>276</b>

# Project Needs: Corridor Reliability





# Project Needs: Peak Hour Congestion





# Project Needs: Infrastructure



# Project Goals

1. Deliver the project within the program budget.
2. Maximize reliability and safety on I-55 and US 67.
3. Provide a durable and maintainable transportation system compatible with regional development.
4. Construct the project safely and minimize impacts to customers.
5. Complete the project on schedule utilizing a diverse workforce.

# DBE & Workforce Goals

## DBE GOALS

construction 12%

professional services 18%

## WORKFORCE GOALS

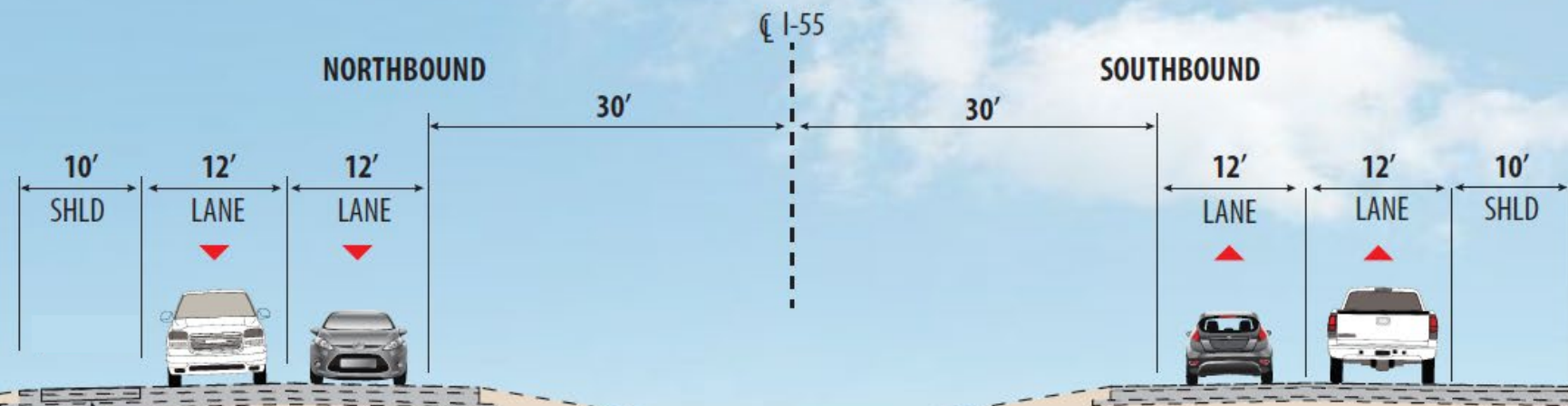
14.7% minority per craft

6.9% female per craft

4 construction OJTs  
at 1000 hours each



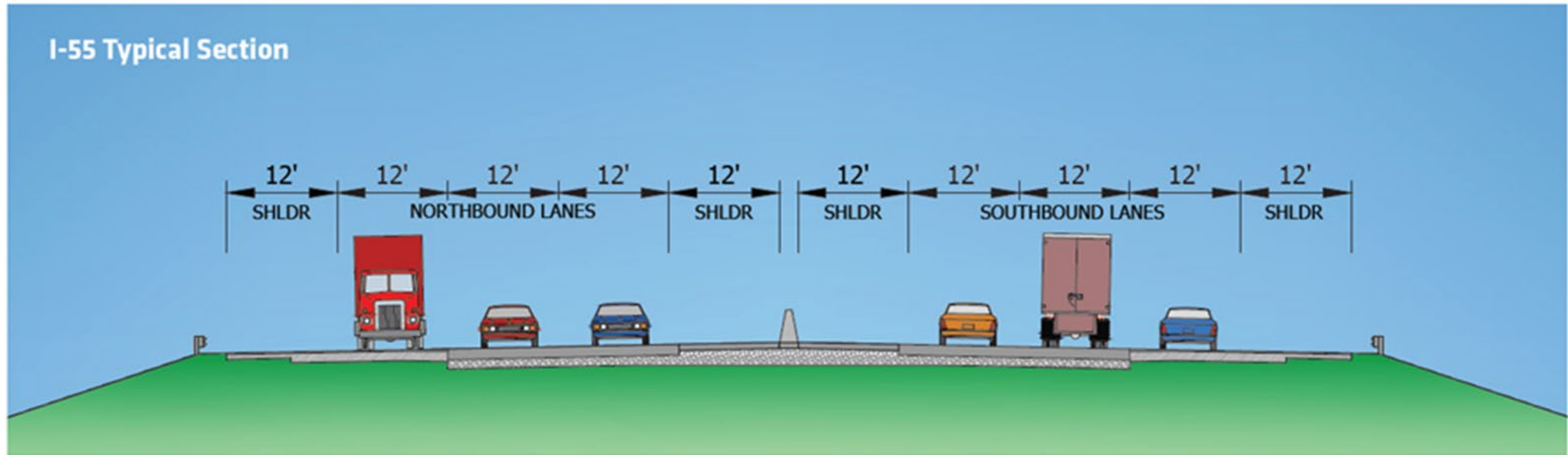
# I-55



# I-55



I-55 Typical Section



- Additional lane both directions
- 12' shoulders







# I-55/Rt. Z





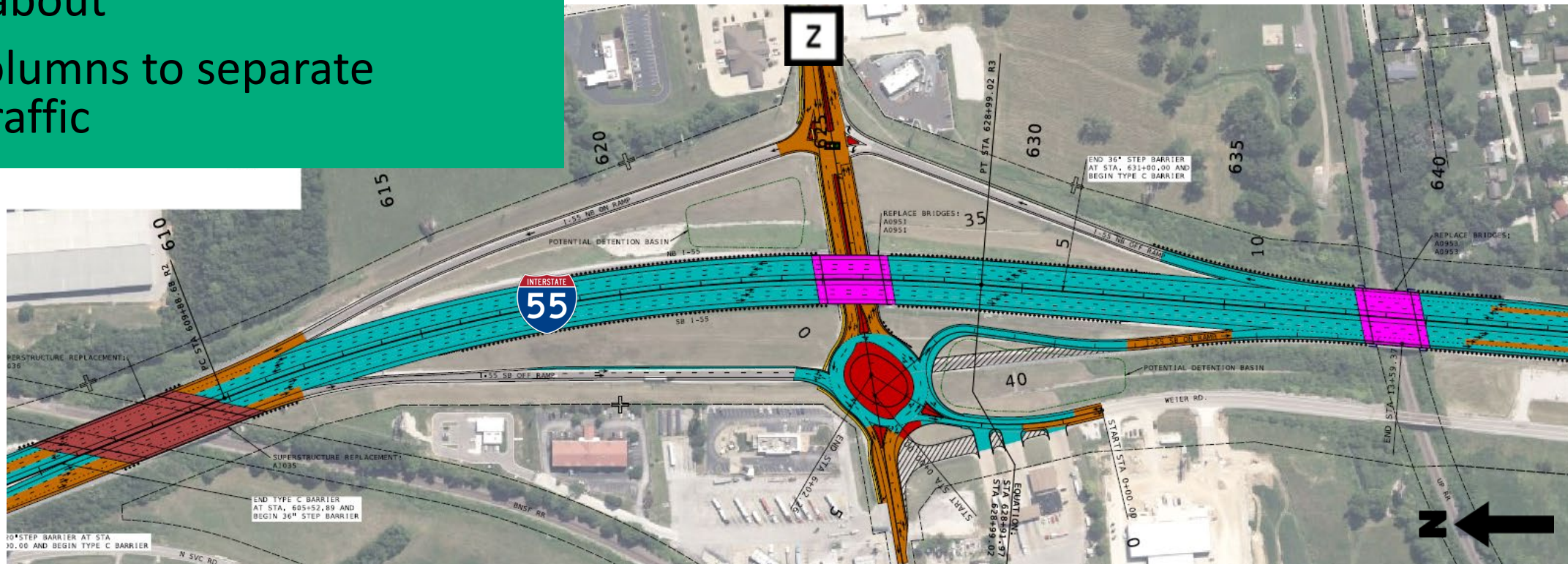
# I-55/Rt. Z



# I-55/Rt. Z



- Flatten curve improving sight distance
- Reconstruct I-55 from BNSF to UP RR
- Consolidate Weier Rd. and SB ramps into roundabout
- Relocate columns to separate opposing traffic

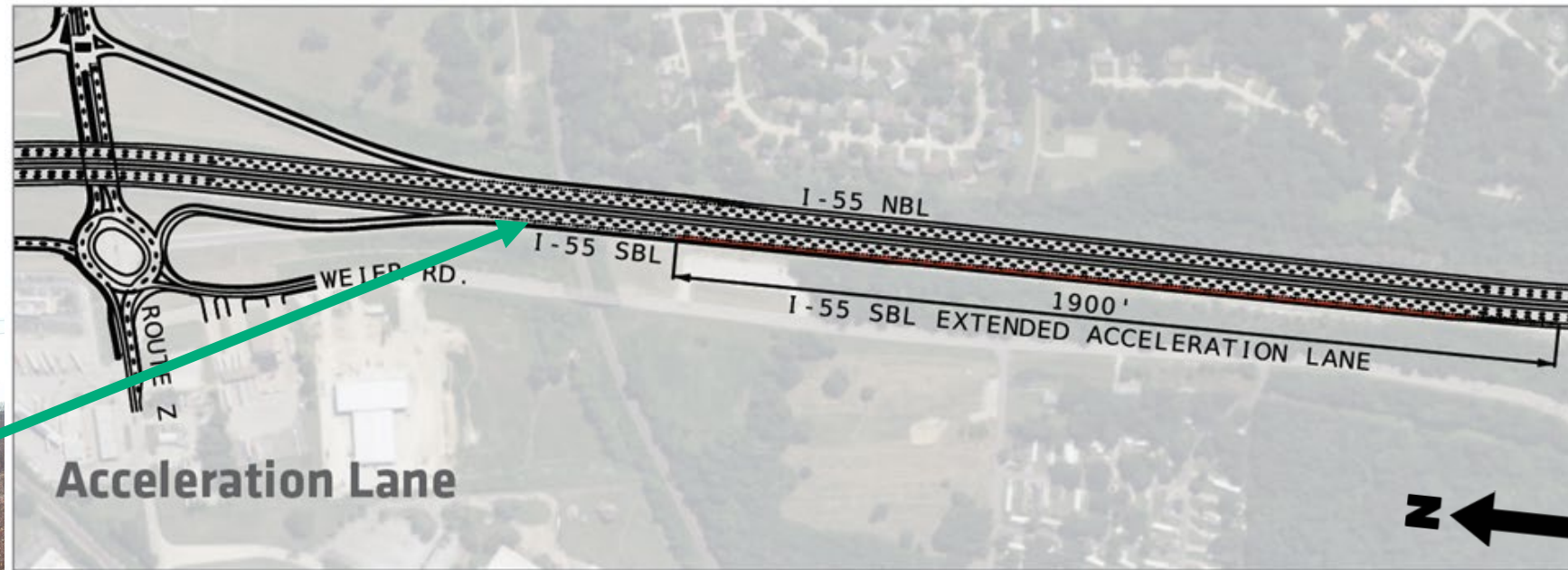




# I-55/Rt. Z



- Extend SB acceleration ramp 1900'





# I-55/McNutt St.



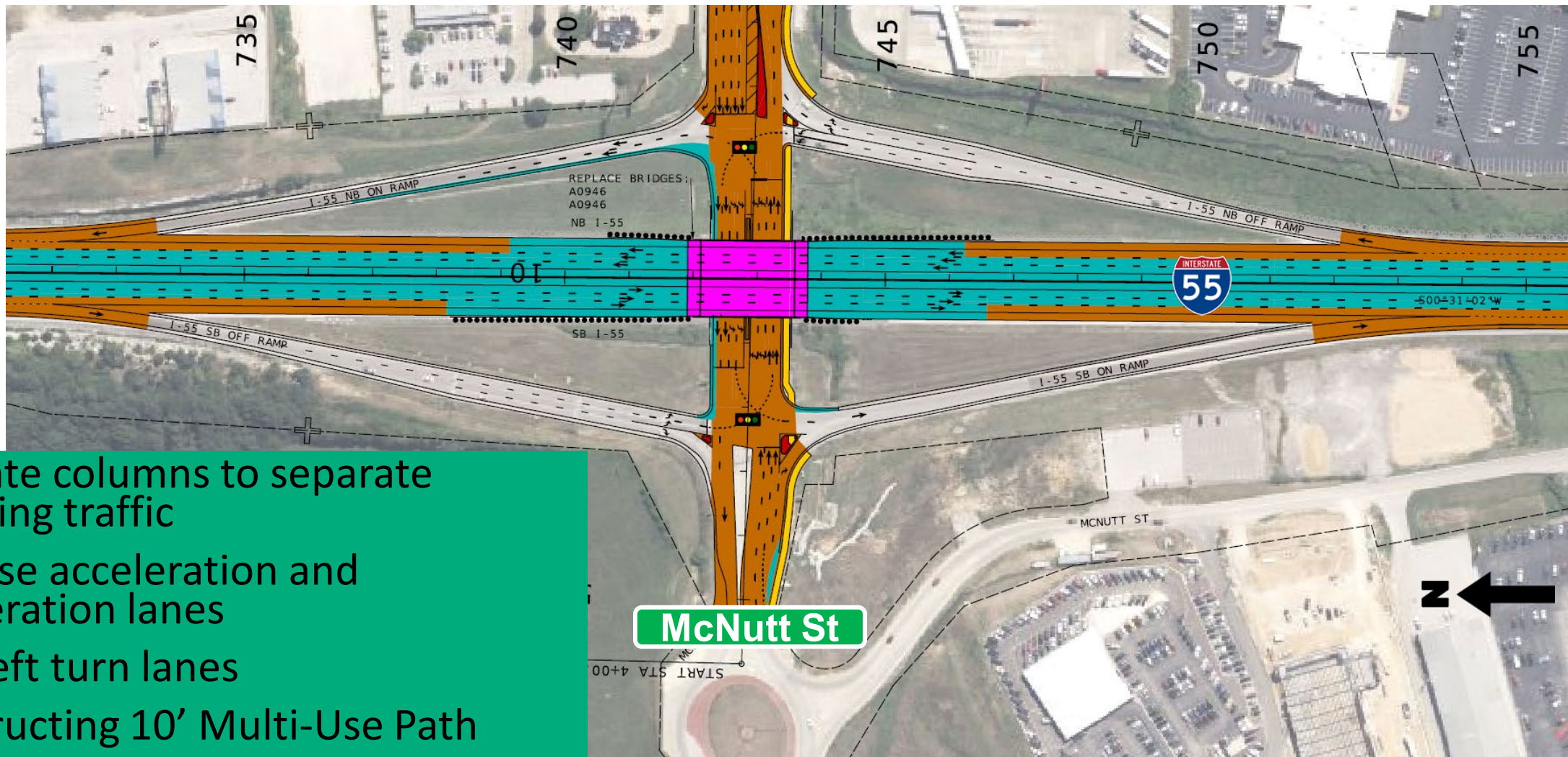


# I-55/McNutt St.





# I-55/McNutt St.



- Relocate columns to separate opposing traffic
- Increase acceleration and deceleration lanes
- Dual left turn lanes
- Constructing 10' Multi-Use Path

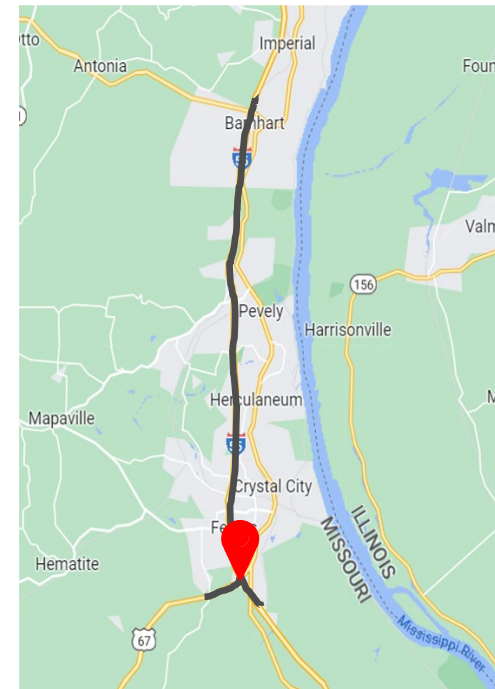


# I-55/US 67



SB I-55 to  
SB US 67  
10,589 veh/day

NB US 67 to  
NB I-55  
11,181 veh/day







- US 67**  
**4 NB lanes**  
**remains free flow**  
**5 loop ramp alignment**

**Interchange Details:**

  - US 67:** 4 NB lanes, remains free flow.
  - I-55:** 5 loop ramp alignment.
  - Detention Basins:** Several potential detention basins are shown, including a large one labeled 1105'.
  - Bridge:** A 1120' long bridge is shown over the I-55.
  - North Arrow:** A north arrow is located in the bottom right corner.

PC	PT	DELTA	CHORD	R	L	T	SK
11400.00	11400.00	0.0000	0.0000	100	0.0000	0.0000	0.0000
11400.00	11400.00	0.0000	0.0000	100	0.0000	0.0000	0.0000
11400.00	11400.00	0.0000	0.0000	100	0.0000	0.0000	0.0000
11400.00	11400.00	0.0000	0.0000	100	0.0000	0.0000	0.0000

PC	PT	DELTA	CHORD	R	L	T	SK
11400.00	11400.00	0.0000	0.0000	100	0.0000	0.0000	0.0000
11400.00	11400.00	0.0000	0.0000	100	0.0000	0.0000	0.0000
11400.00	11400.00	0.0000	0.0000	100	0.0000	0.0000	0.0000
11400.00	11400.00	0.0000	0.0000	100	0.0000	0.0000	0.0000

PC	PT	DELTA	CHORD	R	L	T	SK
11400.00	11400.00	0.0000	0.0000	100	0.0000	0.0000	0.0000
11400.00	11400.00	0.0000	0.0000	100	0.0000	0.0000	0.0000
11400.00	11400.00	0.0000	0.0000	100	0.0000	0.0000	0.0000
11400.00	11400.00	0.0000	0.0000	100	0.0000	0.0000	0.0000

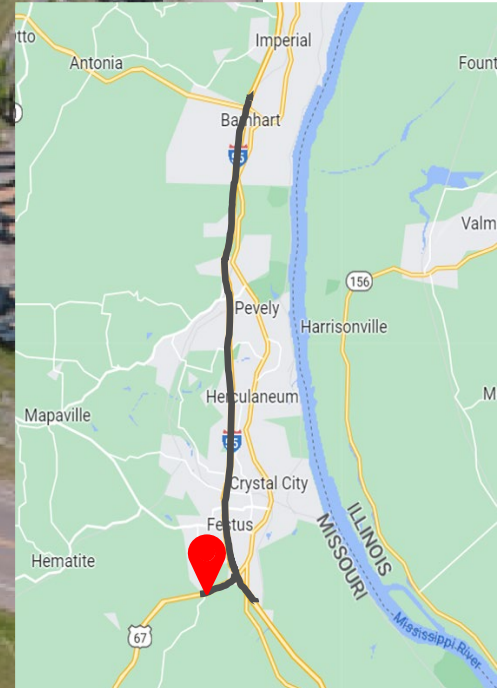
PC	PT	DELTA	CHORD	R	L	T	SK
11400.00	11400.00	0.0000	0.0000	100	0.0000	0.0000	0.0000
11400.00	11400.00	0.0000	0.0000	100	0.0000	0.0000	0.0000
11400.00	11400.00	0.0000	0.0000	100	0.0000	0.0000	0.0000
11400.00	11400.00	0.0000	0.0000	100	0.0000	0.0000	0.0000





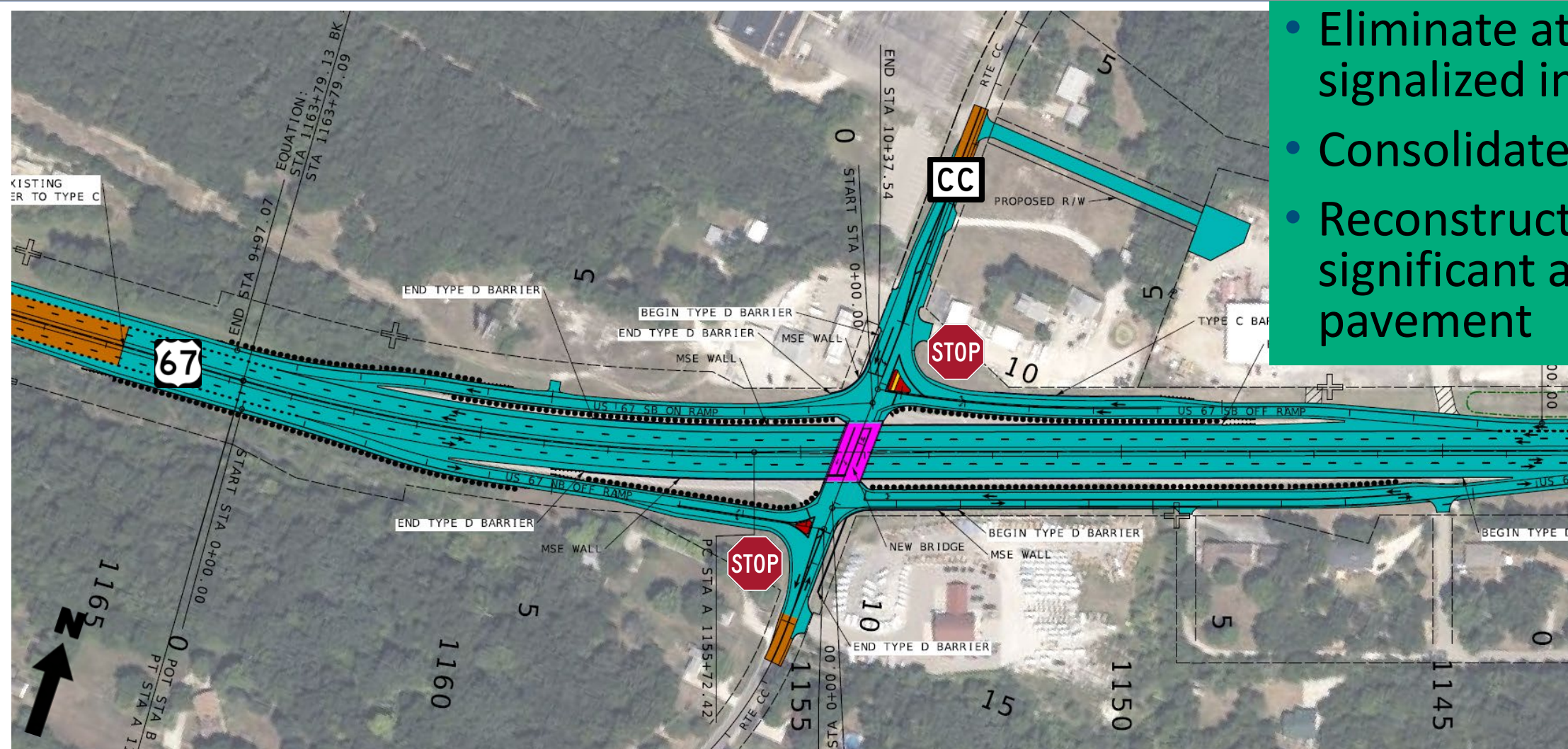


# US 67/Rt. CC





# US 67/Rt. CC



- Eliminate at-grade signalized intersection
- Consolidate entrances
- Reconstruct significant amount of pavement



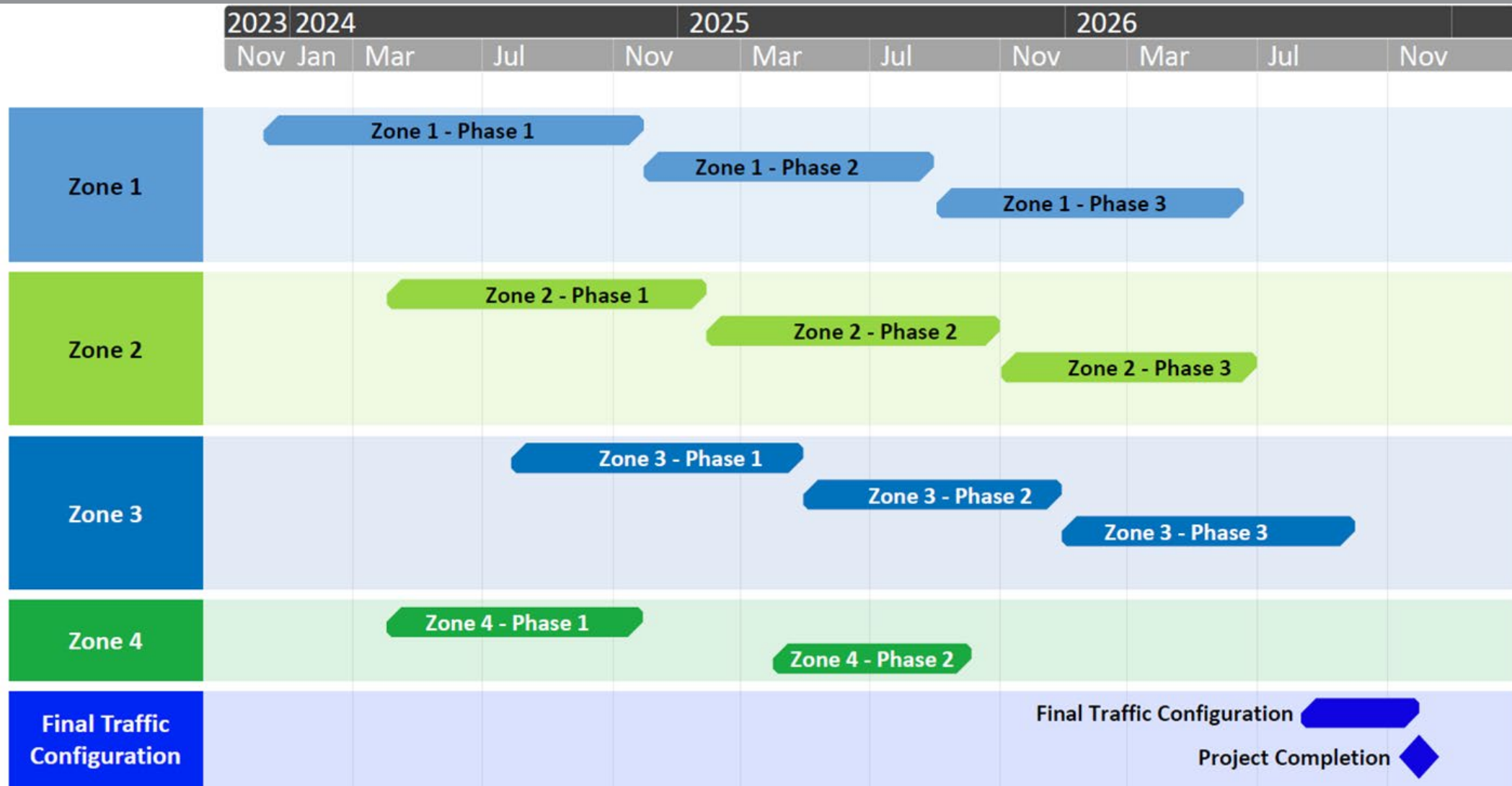
67

CC





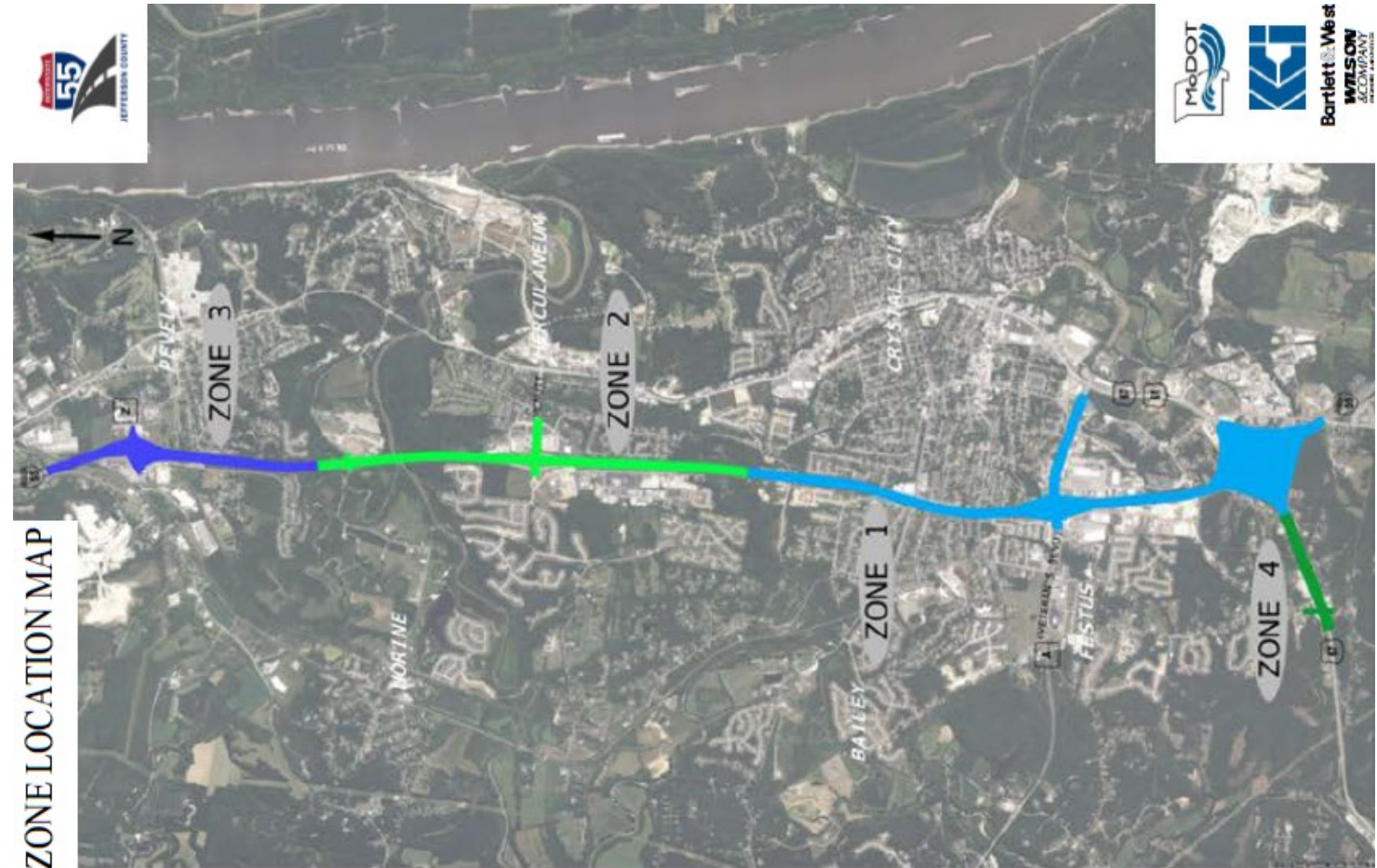
# I-55 Corridor Project Schedule





# Zone Map

- Zone 1 – I-55: Quarry Manley Bridge to US 67
- Zone 2 – Herky-Horine to Quarry Manley Bridge
- Zone 3 – Route Z to Herky-Horine
- Zone 4 – US 67: Route CC to I-55



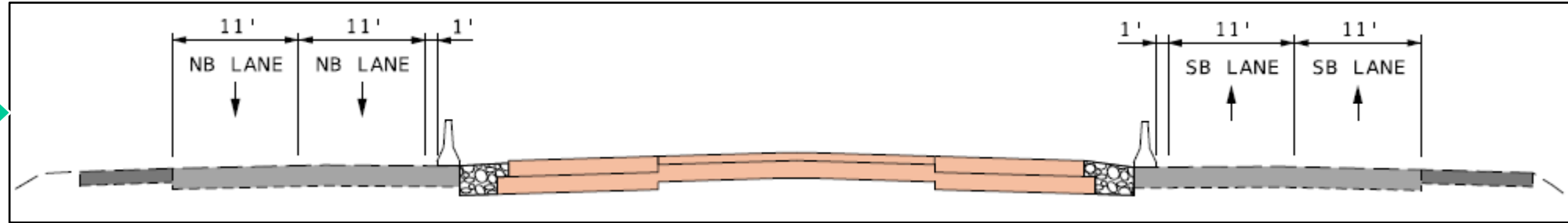
# Highlights

	Improvements
I-55 Mainline	Additional lane both directions, 12' shoulders
I-55/Rt. Z	1 roundabout, 1 signal
I-55/McNutt	Dual left turn lanes, protected signal movement, 10' MUP
I-55/US 67	Dual lane loop ramp
Rt. CC/US-67	1 Bridge, Stop controlled intersections
Total Pavement	83.6 lane miles
I-55 Pavement	2 new full depth lanes
Bridges Addressed	26

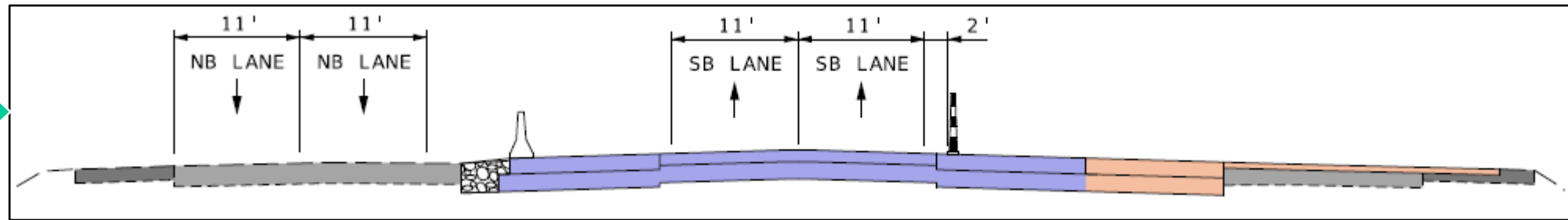


# Construction Phasing on I-55

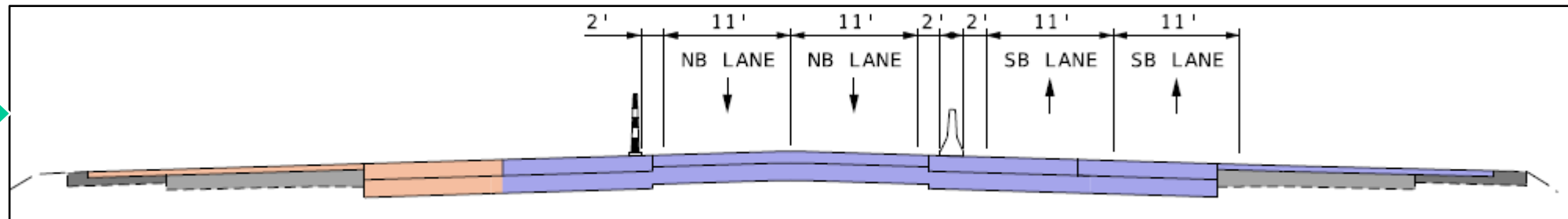
Phase 1



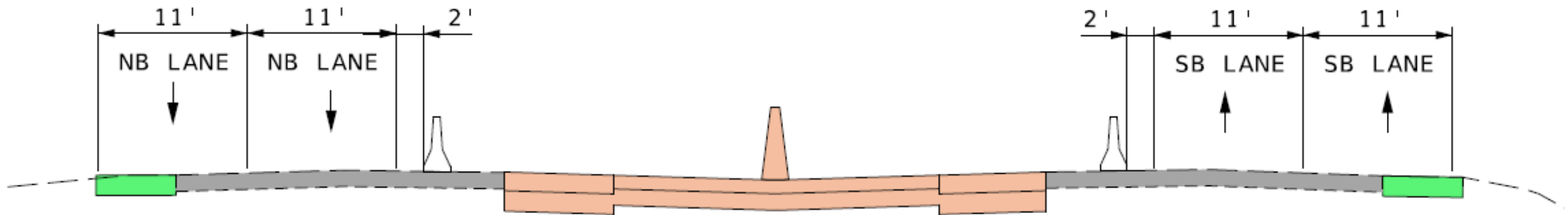
Phase 2



Phase 3



# I-55 Geometrics



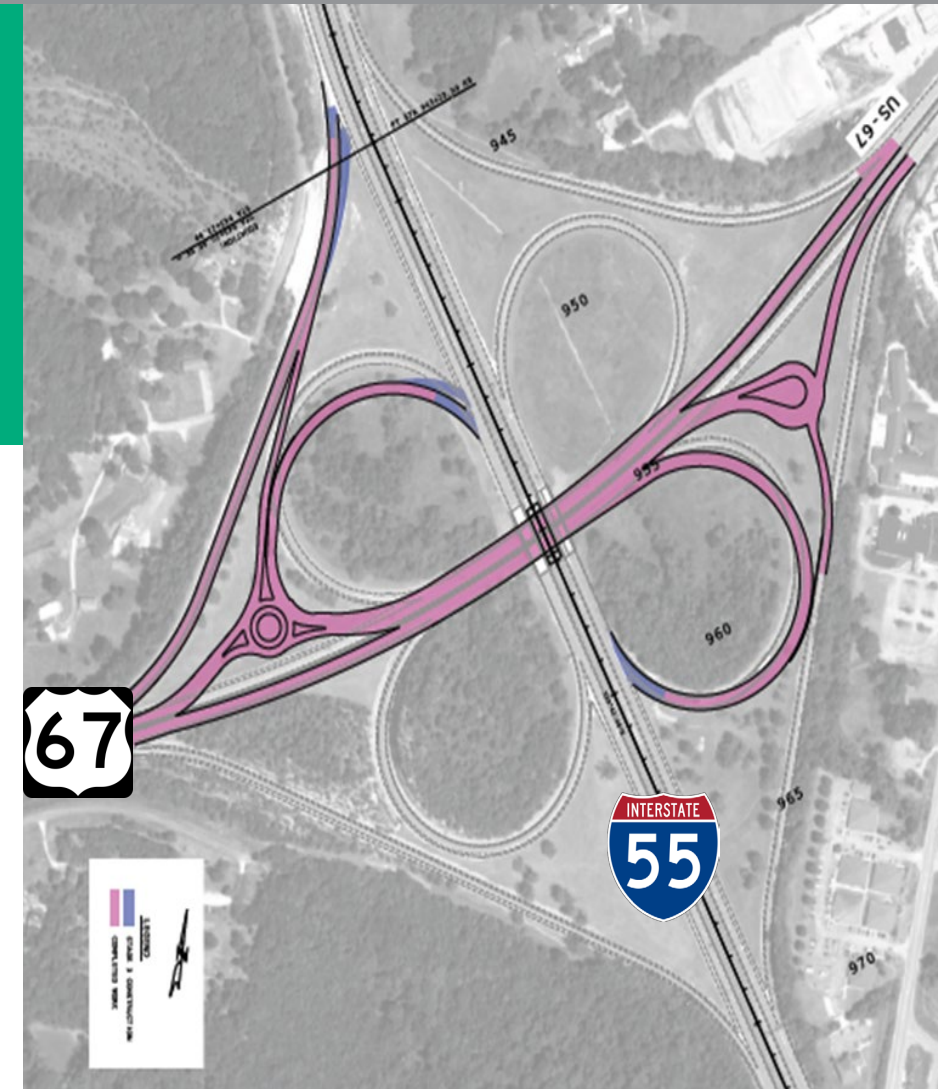
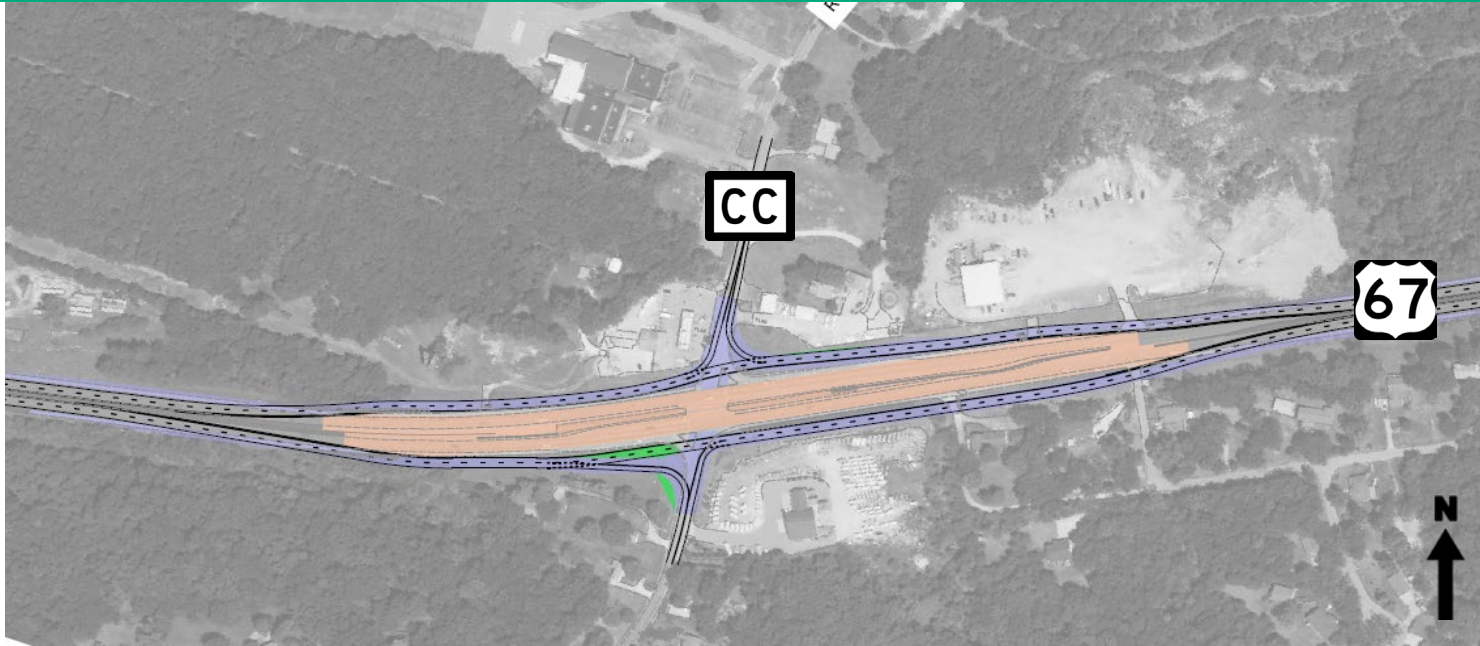
- 2 lanes each direction on I-55
- Minimum 11' lanes throughout construction
- Complete majority of work behind temporary barriers



# US 67 Geometrics



- 2 lanes each direction on US 67
- Minimum 11' lanes throughout construction
- Maintain all movements in I-55/US 67 interchange
- Open I-55/US 67 interchange by November 2024

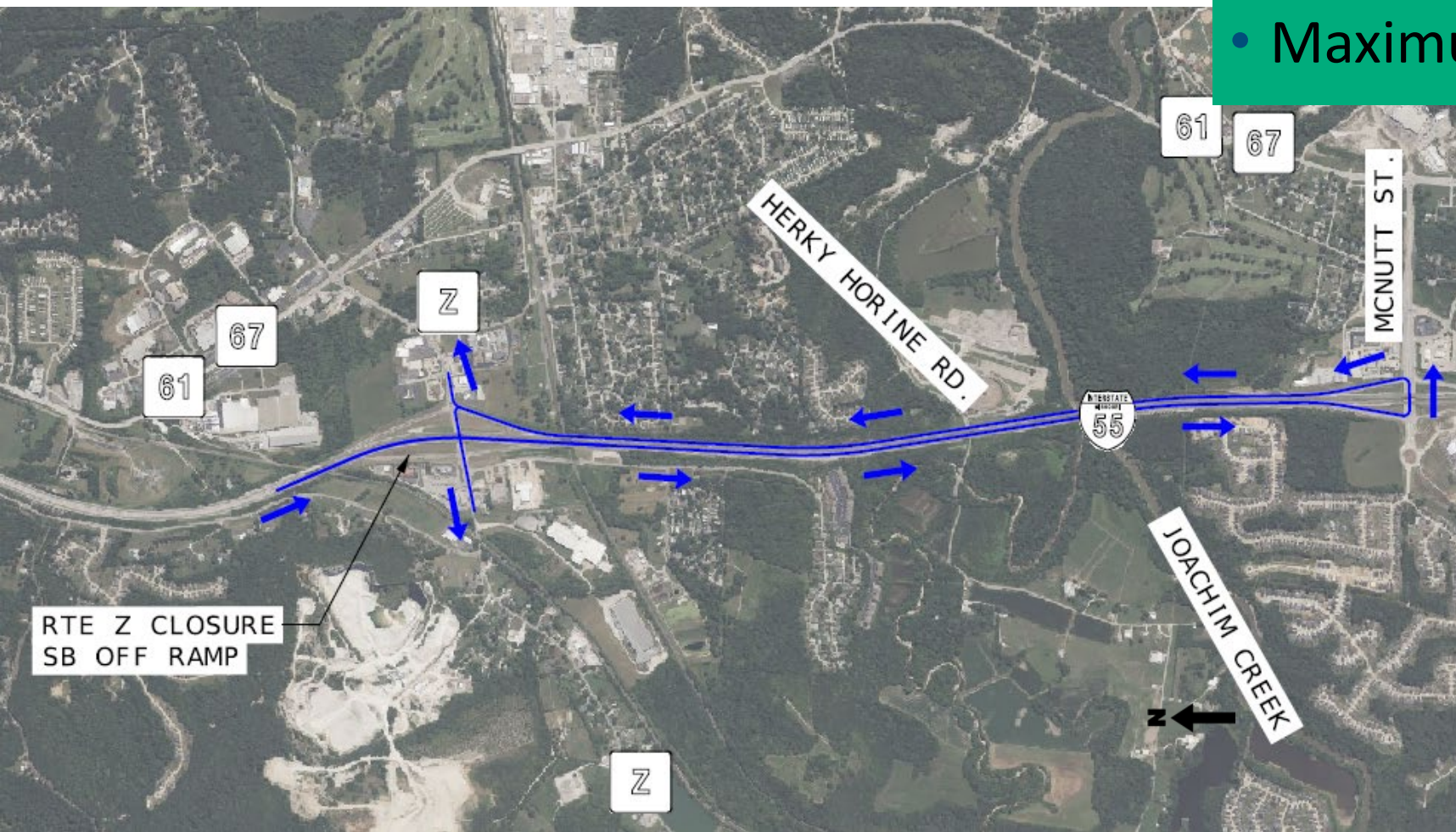




# Detours

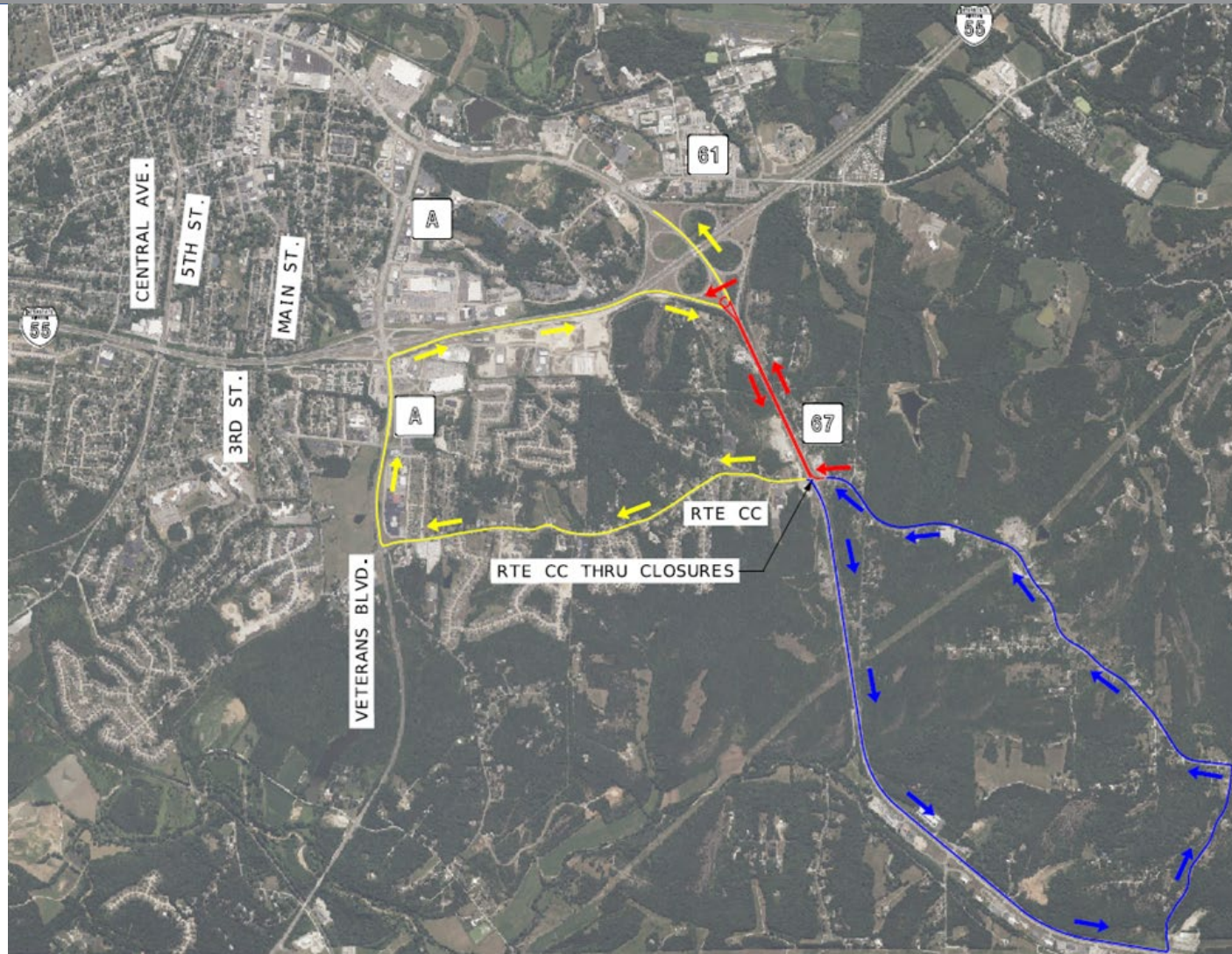


- Use I-55 as detour route
- Maximum full closure of 110 days





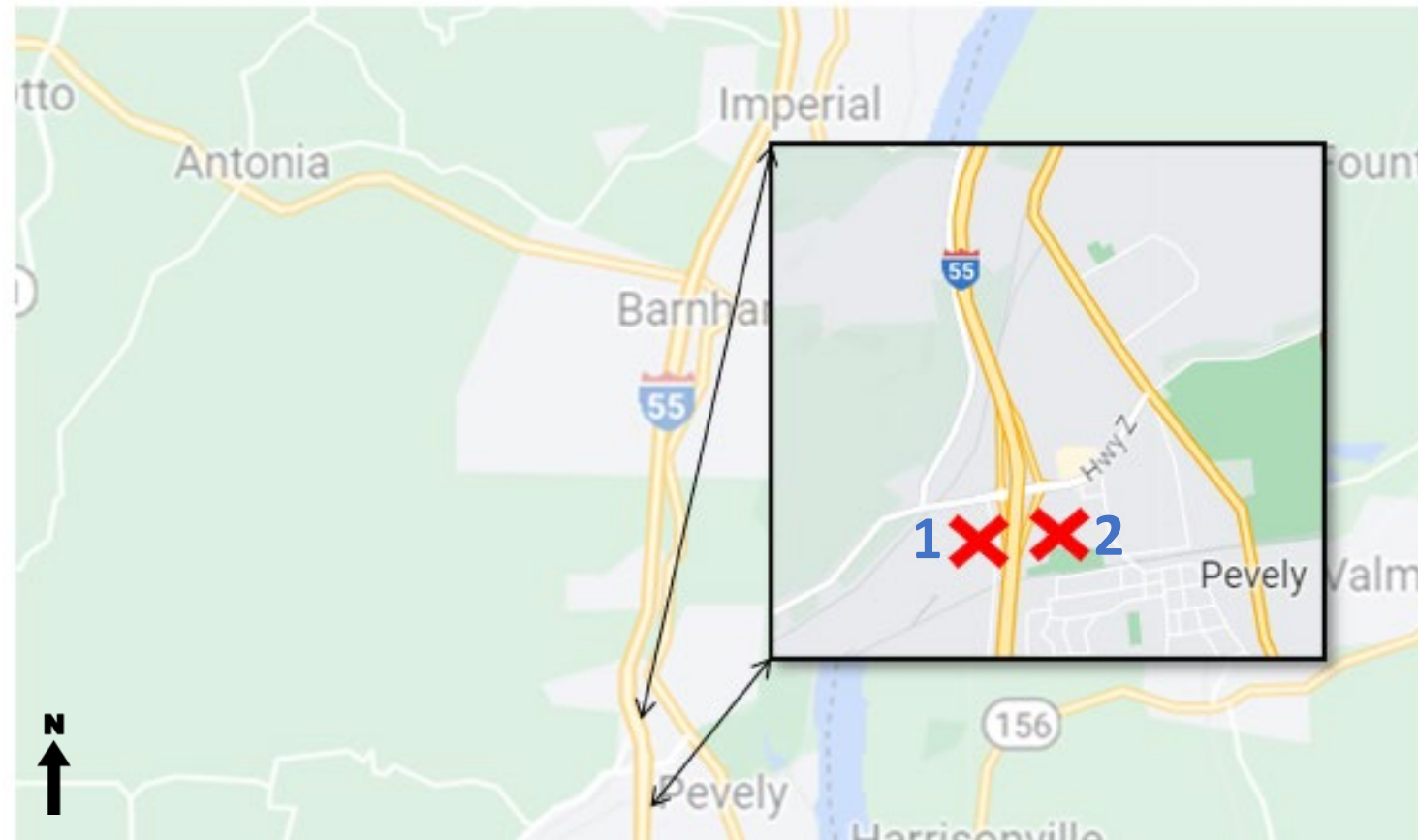
# Detours



# Long Closures



1. Rt. Z to SB I-55 on-ramp (110 days)
2. NB I-55 to Rt. Z off-ramp (110 days)





# Closure Duration Summary

Locations	KCI
Rt. Z to NB I-55 On-Ramp	90
I-55 SB to Rt. Z Off-Ramp	90
Rt. Z to SB I-55 On-Ramp	110
I-55 NB to Rt. Z Off-Ramp	110
Rt. CC at US 67	28
SB I-55 to NB US 67 Ramp	N/A
SB US 67 to NB I-55 Ramp	N/A
3 <sup>rd</sup> St. and Central Ave.	two weekends

# I-55 MOT Summary

	KCI
Geometric Characteristics	2 lanes open each direction
Lane Width	11'
Traffic Split	yes
Speed Reduction	10 MPH
Major Detour Route	stay on I-55
I-55/US 67 Interchange Completion	November 2024



# US 67 MOT Summary

	KCI
Geometric Characteristics	2 lanes open each direction
Rt. CC Access	right in right out for US 67
US 67/Rt. CC Interchange Completion	October 2025





# How You Can Get Involved

- Visit the website and subscribe for email updates at [www.modot.org/interstate-55-corridor-upgrades-jefferson](http://www.modot.org/interstate-55-corridor-upgrades-jefferson)
- Invite MoDOT to present to your organization

# Contact

---

Justin Wolf, P.E.

I-55 Project Director

314-624-3276

[Justin.Wolf@modot.mo.gov](mailto:Justin.Wolf@modot.mo.gov)