



December 15, 2022

SERVICES

Structural
Civil
MEP
Project Management

ESTABLISHED

1973

OWNERSHIP

Employee-owned ESOP

EDM DATA

Business License in MO,
IL and 20 other states
SAM-Registered Small
Business
DUNS 06-464-4586
E-Verify 183182
CAGE 8Y777
NAICS 541330 Eng
541310 Arch

EDM INCORPORATED

220 Mansion House Center
3rd Floor
St. Louis, MO 63102
314.231.5485

Collinsville, IL
618.344.3774

CONTACT

Len Madalon, MS, PE
Executive Vice President
314.335.6915
ljm@edm-inc.com

www.edm-inc.com

MoDOT | Local Programs Administrator
LPAoncall@modot.mo.gov

LPA On-Call Professional Services
Trails and Sidewalks

Dear Selection Committee:

EDM Incorporated is pleased to submit this Letter of Interest for Missouri's Local Program work category of Trails and Sidewalks. Following is a summary of our relevant firm background and project information as outlined in the solicitation letter.

GENERAL EXPERIENCE OF THE FIRM

EDM has delivered innovative yet practical trail and pedestrian facility design that have included environmental clearance, right-of-way, signals, lighting and drainage. Founded in 1973, EDM is an employee-owned professional design firm providing structural, civil, building systems (mechanical, electrical, plumbing) engineering and project management services — comprehensive services under one roof, provides you with complete project integration.

Municipal and County Experience

EDM's engineers have built a strong practice providing valuable professional services for numerous infrastructure and roadway improvement projects for Missouri municipal, county and state agencies, including the following:

City of Clayton	City of Ladue	City of St. Charles	City of Wentzville
City of Creve Coeur	City of Maplewood	City of St. Louis	St. Charles County
City of Fenton	City of Maryland Heights	City of St. Peters	St. Louis County
City of Ferguson	City of O'Fallon	City of Town & Country	State of Missouri
City of Frontenac	City of Overland	City of University City	MoDOT
City of Hazelwood	City of Rock Hill	City of Webster Groves	Ameren / MSD

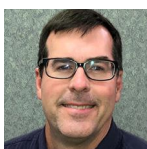
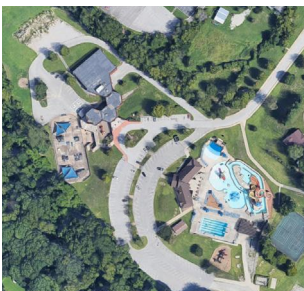
PAST PERFORMANCE

EDM's experience covers a broad range of services that impact trails and sidewalks, including roadway reconstruction, widening, upgrades, new construction and related specialties including traffic, pedestrian safety, trail circulation, parking and signage.

Though EDM has numerous projects that could be highlighted, we have selected projects below and on the next page to demonstrate our roadway design experience.

City-Wide Sidewalk Replacement | Village of Wilbur Park EDM was selected by the Village to design an ADA-compliant street replacement program in this South St. Louis County community. The 60-year-old sidewalks were deteriorating due to age, displacement by adjacent maturing trees, and chemicals. EDM prepared an inventory of the Village's 56,000-SF of existing sidewalks, in which 22% were found to be defective. Typical defects included uneven slabs, broken slabs, over-sized cracks and excessive spalling. Driveway aprons and carriage walks were also inventoried.





Spanish Lake | St. Louis County Parks EDM was selected in 2019 by the St. Louis County Department of Parks and Recreation to provide engineering design services for Spanish Lake Park. The County wanted to appoint an engineering firm that was highly qualified and experienced in trail and parking lot design. EDM managed the surveying of an open grass area along Trampe Avenue for the new asphalt parking lot and path. The path connected the frontage sidewalk and new parking lot to the existing service road/bike path. In order to maximize the use of County funds, an additional survey was completed for two partial trail paths on the same day as the parking lot survey.

Faust Park | St. Louis County Parks EDM was selected in 2020 by the St. Louis County Department of Parks and Recreation to provide engineering services for seven county parks. Design work included four asphalt paths/trails, four parking lots, grading plans and structural design of a salt storage facility. The design at Faust Park consisted of a nearly 1500-foot-long trail through open space and wooded areas. The design included a 12-foot-wide path with minimum 42-foot-radii on curves to allow for county service vehicles.

Fee Fee Improvements | City of Hazelwood EDM provided engineering services for the design of a 1450 LF, three-lane roadway between McDonnell Boulevard and Chapel Ridge, federally funded and designed to MoDOT Standards. The project included sidewalks the full length of the project, ADA improvements to the intersection of Fee Fee and McDonnell, and pedestrian access from a residential area to the bus stop at Fee Fee and McDonnell. The intersection was within St. Louis County's right-of-way; therefore, any new work in this area was designed to the County Highway Standards.

Lower Meramec WWTP Park | MSD EDM provided all services for this new Park sited on a landscaped plot, which included a new shelter, two informational kiosks, and a wide sidewalk from the WWTP and throughout the Park. The sidewalk utilized pervious concrete, and a rain garden with native plantings was created. This Park also serves as a rest stop on a new bike and hiking trail to be developed adjacent to the property.

Hazelwood Park Improvements | City of Hazelwood The City of Hazelwood asked EDM to assist them in creating new numerous walking trails and additional parking at two city parks. EDM designed the City's vision of permeable pavement at the parks for both trails and parking, to maintain a greener footprint on the environment.

QUALIFICATIONS OF PERSONNEL

The EDM team has technical expertise, availability, and comprehensive experience for LPA trail and sidewalk projects. Within our non-motorized design services, we have successfully worked with MoDOT's sidewalk and curb ramp standards, Americans with Disabilities Guidelines (ADAAG), and the Public Right-of-Way Accessibility Guidelines (PROWAG).

Len Madalon, MS, PE, Executive Vice President and Director of the Civil Group, Len has over 30 years of experience designing civil roadway and drainage projects. He was the Design Engineer on 14 road and/or trail projects for MoDOT, St. Louis County, St. Charles County, Wentzville and Frontenac. Additionally, he is currently managing a multi-year contract for MSD and has yet to miss a deadline on 15 separate projects. *MoDOT LPA Training*





KEY TRANSPORTATION DESIGN SERVICES

- Sidewalks and Paths
- Parking Analysis and Plans
- Parking Lots and Garages
- Permeable Pavements
- Utility Accommodation and Coordination
- Transportation Engineering
- Roadways and Streets
- Bridges and Culverts
- Curbs and Gutters
- Grading and Drainage
- Hydraulic Modeling
- Land-Use and Rezoning
- Life Cycle Cost Analysis
- Permitting
- Stormwater Plans
- Wastewater Sewer Lines
- Site Development
- Traffic Data Collection, Analysis and Control Plans
- Construction Observation and Administration

Kurtis Eisenbath, MS, PE, Lead Civil Engineer, has extensive design experience in sewers, stormwater detention and drainage for roadways and site developments. He has worked on MoDOT projects prior to joining EDM, including US 61 and Route P Interchange in St. Charles County, I-64 Lane Additions from I-270 to Route 340, and Stan Musial Veterans Memorial Bridge, where he designed connections to existing I-70 and streets. *MoDOT LPA Training*

Eric W. Mullikin, PE, Vice President and Senior Structural Engineer, is EDM's lead structural designer. His expertise includes the design of bridges and buildings with structural steel, reinforced concrete, masonry and wood framing. His projects include multiple parking structures, junction chamber design for the City of Frontenac's stormwater program, several pedestrian bridges, and even the railroad trestle renovation at the Saint Louis Zoo.

Anthony Tarro, Lead Civil CADD Designer/Technician has over 35 years of design and construction experience, including as a certified inspector. In addition to preparing plans and exhibits with the latest software including InfraWorks, Tony has expertise in quantities, cost estimates and easement documents. *MoDOT LPA Training*

The entire EDM team has considerable experience with trails and sidewalks and accompanying structures, such as parking facilities, rest areas and maintenance buildings, and we are sensitive to the impacts their designs have on the traveling public.

FAMILIARITY | CAPABILITY

EDM has successfully delivered prior MoDOT and municipal projects that utilize federal funding and are compliant with federal law. Our experience provides us with the knowledge, familiarity and capability to interact with municipalities as well as the governing and reviewing agencies, as required, and to expeditiously complete any contract. EDM consistently provides projects to our clients that are on-time and on, or under, budget. The range of construction bids received on our projects are typically very close to our estimates, indicating not only the accuracy of our estimates but the completeness and quality of our bid documents.

ACCESSIBILITY

EDM professionals are ready and accessible to provide On-Call Trails and Sidewalks design to any Missouri municipality. EDM has Missouri offices in St. Louis and St. Charles, and our projects are throughout Missouri, primarily in the central and eastern half of the state. Our staff will be available for all meetings as dictated by project schedule and issues. The frequency and location of team meetings and core team meetings will be coordinated with the municipality, and modified as necessary as the project progresses. Communications with project team members will be on-going to provide the accessibility necessary to meet the municipality's expectations and successfully complete the project.

EDM appreciates the opportunity to respond to this LPA Solicitation, and we look forward to working with various Missouri municipalities on their trail and sidewalk projects.

Sincerely,

EDM Incorporated

Len Madalon, MS, PE

Executive Vice President





OVERVIEW

MISSION

Inspiring trust in our services based on staff expertise, creativity and unmatched service.

SERVICES

Civil
Building Systems | MEP
Structural
Project Management

ESTABLISHED

1973

OWNERSHIP

Employee-owned (ESOP)

KEY MARKETS

Commercial | Corporate
Education
Government
Health Care
Hospitality | Housing
Industrial
Recreation | Theme Parks
Stormwater Management
Water/WW Systems

EDM INCORPORATED

220 Mansion House Center
3rd Floor
St. Louis, MO 63102
314.231.5485

850 Vandalia, Suite 250
Collinsville, IL 62234
618.344.3774

CONTACT

Len Madalon, MS, PE
Executive Vice President
314.335.6945
ljm@edm-inc.com
www.edm-inc.com



EDM is an employee-owned professional design firm providing structural, civil, building systems (mechanical, electrical, plumbing) engineering and project management services, as well as complementary architectural services.

EDM encompasses engineering, architecture and project management under one roof, offering you complete project integration. Our services are available independently or jointly to build essential collaboration and coordination.

The breadth of project experience of our staff, from a small neighborhood stormwater system to 70,000-seat stadiums, provides EDM clients with virtually unlimited project capabilities.

PROJECT TYPES

New Construction | Additions | Renovations
Adaptive Reuse | Urban Retrofits
Historic Restoration
Water Quality | Creek Bank Stabilization
Energy Studies | Feasibility Studies
Facility Condition Assessments
HVAC and Chillers | Air Quality
Fire Protection | Life Safety
Transportation Circulation | Parking, Garages
HVAC Upgrades/Modernization
Seismic Studies and Upgrades
Site Development
LEED/Sustainable Design
Design/Build
Value Engineering | BIM

ROADWAY TRAILS SIDEWALKS



ENGINEERING

Creative application of science, mathematics and experience



DESIGN

Development of a sound concept for a project



MANAGEMENT

Administration of a team to achieve success



MISSOURI GOVERNMENT AND AGENCY CLIENTS

City of Branson	City of Manchester
City of Bridgeton	City of Maplewood
City of Clayton	City of Maryland Heights
City of Crestwood	City of O'Fallon
City of Creve Coeur	City of Overland
City of Dardenne Prairie	City of Rock Hill
City of Ellisville	City of St. Charles
City of Fenton	City of St. Louis
City of Ferguson	City of St. Peters
City of Florissant	City of Sullivan
City of Frontenac	City of Town & Country
City of Hazelwood	City of University City
City of Herculaneum	City of Webster Groves
City of Ladue	City of Wentzville
St. Charles County	St. Louis County
State of Missouri Multiple Departments	
Ameren Missouri	
GSA General Services Administration	
MSD Metropolitan St. Louis Sewer District	
MoDOT Missouri Department of Transportation	
St. Louis Lambert International Airport	
USACE US Army Corps of Engineers	
US Department of Veterans Affairs	





CIVIL ENGINEERING

EDM HAS BEEN GREAT TO WORK WITH,

responsive to Frontenac's needs and resourceful in addressing issues and concerns that have arisen over the 13 years we have worked together.

Jeff Wappelhorst
Director of Public Works
City of Frontenac, MO

RECENT AWARDS

Timber Trail to Briar Ridge Channel

ASCE St. Louis -

2022 Project of the Year

APWA Missouri Chapter-

2022 Project of the Year

East-West Gateway

2022 Outstanding

Local Government

Achievement Award

CIVIL DESIGN

Site Development

Land-Use and Rezoning

Roadways / Streets

Water Supply System

Creek Bank Stabilization

Bio-Stabilization

Stormwater (SW) Pollution

Prevention Plans *SWPPP*

SW Needs Assessments

Sewer / SW Sewers

Pump Stations

CSO Control

Permitting

Utility Corridor Mapping

SCADA Systems

Feasibility Studies

CSO Replacements

Parking Analysis and Plans

Permeable Pavements



TRANSPORTATION

- City of Clayton | Bonhomme Garage
- City of Creve Coeur | Ladue and Spoede Intersection
- City of Fairview Heights | Kassing Drive, Summit Avenue
- City of O'Fallon, MO | Sonderen Bridge, Mexico Road Widening
- City of St. Charles, MO
 - Augusta Bottom Road Bridge Replacements
 - Hemsath Road Reconstruction
- City of St. Louis | Truman Boulevard Reconstruction
- St. Charles County | Multiple Projects
- St. Louis County | Multiple Projects
- St. Louis Lambert International Airport | Multiple Projects
- City of University City, MO | George Street Improvements
- City of Wentzville, MO | West Meyer Road and Replacement Bridge
- BJC HealthCare | Clayton Road Assessment
- MoDOT | Multiple Projects
- IDOT | Rest Areas, Storage Facilities, Maintenance Buildings

STORMWATER | WATER | WASTEWATER

- Metropolitan St. Louis Sewer District | Multiple Projects
- City of Brentwood | Stormwater (SW) Ordinance
- City of Bridgeton | SW Detention Basin, SW Needs Assessment
- City of Crestwood | Whitecliff Park/Pardee Lane Feasibility Study
- City of Fenton | Fenpark Industrial Center Storm Sewers
- City of Frontenac | SW Designs, SW Master Plan, Rain Gardens
- City of Maryland Heights | Storm Sewers, Hydraulic Analysis/Design
- City of St. Peters | Multiple Bio-Stabilization of Stream Banks
- City of Town & Country | Nettle Creek LOMR
- City of Webster Groves | Rain Gardens, Stormwater Designs

SITE DEVELOPMENT

- Ameren | Headquarters Entrance Redevelopment, St. Louis
- Anheuser-Busch | Northeast Campus, St. Louis
- Collinsville School District | High School Campus, Collinsville, IL
- First Bank | Branch Offices, Multiple Locations
- Foodmaker | Jack-in-the-Box Restaurants, Multiple Locations
- MasterCard | Global Technology Headquarters, O'Fallon, MO
- State of Missouri
 - Mark Twain State Park
 - Dept of Conservation | Columbia Bottom Conservation Area
 - Wappapello State Park | Visitors Center and Campgrounds
- City of O'Fallon, IL | O'Fallon Community Park
- Old Post Office | Plaza Renovation, St. Louis
- Rockwood School District | Multiple Projects, St. Louis
- City of St. Charles | Riverfront Park





ROADWAYS AND BRIDGES

SAFE, QUICK, RELIABLE AND EFFICIENT ARE THE TENETS

of every transportation project designed by EDM.

Our team looks at the planning, functional design, operation and management of infrastructure, with a focus on its economic and environmental impact.

TRANSPORTATION DESIGN EXPERTISE

Curbs and Gutters
Grading and Drainage
Grant Assistance
Land Use and Rezoning
Life Cycle Cost Analysis
Hydraulic Modeling
Kiss and Ride Lots
Parking Analysis and Plans
Parking Garage Assessments
Parking Lots and Garages
Pedestrian Bridges
Permeable Pavements
Permitting
Risk Management/Safety
Road Bridges and Culverts
Roadways and Streets
SCADA Systems
Seismic Improvements
Sidewalk and Trails
Site Development
Stormwater Plans
Utility Accommodation and Coordination
Traffic Control Plans
Transportation Engineering
Wastewater Sewer Lines
Construction Observation and Administration



BELLEVILLE, IL | North 23rd Street

CLAYTON, MO | Hillcrest and Wydown Terrace Subdivisions

CREVE COEUR, MO | Ladue and Spoede Intersection

FAIRVIEW HEIGHTS, IL | Summit Avenue, Kassing Drive

FENTON, MO | Woodway Subdivision Streets/Storm Sewers

FLORISSANT, MO | Shackelford Road Improvements

FRONTENAC, MO

- Glen Abbey Road and Culvert
- Conway at Spoede Street Drainage

HAZELWOOD, MO

- Fee Fee Road Improvements
- Teson Road Drainage Design and Culvert

O'FALLON, MO

- Sonderen Road Bridge Replacement
- Mexico Road Widening

OVERLAND, MO | Woodson Road Reconstruction

ROCK HILL, MO | Kortwright Avenue, Madison Avenue

ST. CHARLES, MO | Hemsath Road Reconstruction

ST. LOUIS, MO

- Gratton Street at Truman Parkway Reconstruction
- St. Louis Lambert International Airport | Multiple Projects

ST. PETERS, MO | Executive Centre Parkway and Bridge

TOWN & COUNTRY, MO | Clayton Road Improvements

UNIVERSITY CITY, MO | Heman Park Centennial Commons

WENTZVILLE, MO | West Meyer Road and Bridge Replacement

MoDOT | MISSOURI DEPARTMENT OF TRANSPORTATION

- Hwy 21 Resurfacing, Jefferson County
- I-55 Ramps, Truman Parkway at Lafayette, St. Louis
- I-44 Updates and Overlay, St. Louis

ST. CHARLES COUNTY, MO

- Augusta Bottom Bridge and Road Improvements
- Old Hwy 79 Bridge Replacements
- Pitman Hill Road Design and Hydraulic Study

ST. LOUIS COUNTY, MO

- Barrett Station Road Improvements
- Laclede Station Road Improvements
- Mason Road Improvements





TRAIL AND SIDEWALKS

THE IMPACT OF TRAILS AND SIDEWALKS

EDM's experience covers a broad range of services that impact trails and sidewalks, including roadway reconstruction, widening, upgrades, new construction and related specialties including traffic, pedestrian safety, trail circulation, parking and signage.

EDM has designed trails or sidewalks for all projects listed at right.

TRANSPORTATION DESIGN EXPERTISE

Curbs and Gutters
Grading and Drainage
Grant Assistance
Land Use and Rezoning
Life Cycle Cost Analysis
Hydraulic Modeling
Kiss and Ride Lots
Parking Analysis and Plans
Parking Lots and Garages
Pedestrian Bridges
Permeable Pavements
Permitting
Risk Management/Safety
Road Bridges and Culverts
Roadways and Streets
SCADA Systems
Seismic Improvements
Sidewalk and Trails
Site Development
Stormwater Plans
Utility Coordination
Traffic Control Plans
Transportation Engineering
Construction Observation and Administration



CLAYTON, MO | Hillcrest and Wydown Terrace Subdivisions

EAST ST. LOUIS, IL | Malcolm W. Martin Memorial Park

ELLISVILLE, MO | Marsh at Hutchinson Improvements

FAIRVIEW HEIGHTS, IL | Summit Avenue, Kassing Drive

FENTON, MO | Woodway Subdivision Streets/Storm Sewers

FLORISSANT, MO | Shackelford Road Improvements

FRONTENAC, MO

- Oak Valley-Hickory-Geyer Crossing
- Glen Abbey Road and Culvert
- Conway at Spoede Street Drainage

HAZELWOOD, MO

- Hazelwood Park Trails
- Fee Fee Road and Sidewalk Improvements
- Teson Road Drainage Design and Culvert

LEWIS & CLARK COMMUNITY COLLEGE

- National Great Rivers Research Center
- N.O. Nelson Campus

MO DEPT OF CONSERVATION | Columbia Bottom Conservation Area

O'FALLON, MO | Mexico Road Widening

OVERLAND, MO | Woodson Road Reconstruction

ST. CHARLES, MO

- Hemsath Road Reconstruction
- Riverfront Park

ST. LOUIS, MO | Gratton Street at Truman Parkway Reconstruction

ST. PETERS, MO | Executive Centre Parkway and Bridge

TOWN & COUNTRY, MO | Clayton Road Improvements

UNIVERSITY CITY, MO | George Street Improvements

WENTZVILLE, MO | West Meyer Road and Bridge Replacement

WILBUR PARK | City-Wide Sidewalk Replacement

MSD | Lower Meramec WWTP Park

ST. CHARLES COUNTY, MO

- Augusta Bottom Bridge and Road Improvements
- Pitman Hill Road Design and Hydraulic Study

ST. LOUIS COUNTY, MO

- Barrett Station Road Improvements
- Laclede Station Road Improvements

