

# 60 years

of delivering intelligent, pragmatic, and high-quality solutions that help clients succeed on a wide range of planning, design, and construction projects.

Reitz & Jens is a civil engineering consulting firm located in St. Louis, Missouri uniquely qualified and experienced to provide civil engineering services with expertise in geotechnical and water resources engineering. We produce creative and technically strong solutions in a timely and professional manner to meet the challenges and goals of our clients. It is our philosophy and experience that a thorough scope of engineering services, provided by a highly qualified consultant, will substantially reduce construction costs and improve the overall project quality and sustainability.

Since our formation in 1963, the firm has completed over 10,000 projects throughout the midwest.





## Specialties

At Reitz & Jens, we specialize in four key areas. Our philosophy and experience with these engineering services, while provided by highly qualified consultants, will substantially reduce the construction costs, and improve the overall project quality resulting in lower life cycle costs.

### Civil Engineering

Permitting, planning and design phase services on projects requiring seamless interaction between owners, planners and designers, and geotechnical and water resource engineers. Our experience has been primarily focused in the fields of natural resources, waste management, stormwater and floodplain management

### Geotechnical Engineering

Permitting, planning and design phase services on projects requiring seamless interaction between owners, planners and designers, and geotechnical and water resource engineers. Our experience has been primarily focused in the fields of natural resources, waste management, stormwater and floodplain management

In developing data to support the engineering decisions made by the firm, we have conducted over 5,000 subsurface investigations.

### Stormwater

Provides sustainable and practical solutions to chronic flooding, flood protection, erosion, and storm water control at regional and neighborhood scales. We have the experienced civil engineers, hydrologists, and geomorphologists needed to assess, evaluate, model and design solutions for virtually any surface water management issue.

### Construction Services

We work in partnership with our clients and other members of the construction team, providing the detailed information you need to make timely, informed decisions every step of the way. We maintain a staff of full-time Field Technicians who are experienced with the requirements and nuances of inspecting and testing all geotechnical components of the construction site.

---

Because of this vast experience, we are often retained by contractors to act as an advisor during construction on difficult sites.

## Our Process

Quality has and will always remain the primary focus at Reitz & Jens, and we are committed to providing the highest level to our clients. Our team of project managers and quality assurance practices ensure that every project is vetted at every key stage of a project. While each team member of Reitz & Jens has unique capabilities and experience, all staff have prior design experience. This cross-pollination of experience will ensure that the designs ultimately implemented will be the result of collaboration between multiple experts.

## Leadership

The Principals of Reitz & Jens have been active in the civil and geotechnical engineering fields for an average of 21 years. Our staff is organized with engineers and laboratory/field technicians with up to 40 years of hands-on experience in all aspects of the design, testing, field inspection and construction of civil engineering projects.



**Jeff Bertel, PE**  
*Principal*

Education: MS Civil Engineering (Geotech)  
Years' experience: 19; 16 with Reitz & Jens



**Eric Karch, PE**  
*Principal*

Education: MS Civil Engineering (Water Resources)  
Years' experience: 23; 15 with Reitz & Jens



**Kyle Kocher, PE**  
*Principal*

Education: BS Civil Engineering  
Years' experience: 22; 21 with Reitz & Jens

## Our Team

We have remained small to maintain tight control on the quality of our services. The size of our firm assures that there is continuous interaction between all team members to create a collaborative approach to solving problems throughout the planning, design and construction process. Senior-level personnel are constantly involved and available to guide and mentor younger firm members during all phases of evaluation and design.

Reitz & Jens employees work across the disciplines of engineering, project management and as specialists in multiple areas to give you the expertise needed for your specific project. We will assign at least one licensed professional to each project awarded. Resumes for all Reitz & Jens personnel are available upon request.

## Client List

Our reputation for high-quality services, has led to many repeat clients and ongoing working relationships that include:

- Metropolitan St. Louis Sewer District
- Cities of Creve Coeur, Ladue, St. Charles, St. Peters, O'Fallon, Maryland Heights, Town & Country, University City
- St. Louis, Tulsa and Kansas City District Corps of Engineers
- US Fish and Wildlife Service
- Great Rivers Greenway District
- Ameren Missouri and Ameren Illinois
- Missouri Department of Natural Resources – Division of State Parks
- Missouri Department of Conservation



Senior-level  
personnel guide  
younger firm  
members in all  
phases of evaluation  
and design.



## Chicago to Quad Cities Passenger Rail Project

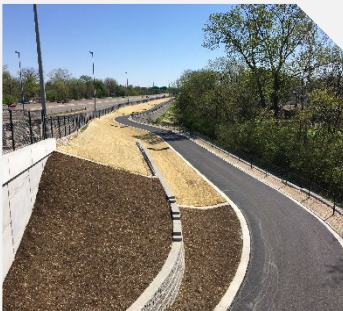
Year Completed:  
2021

Client/Location:  
Various; Moline, IL to Wyanet, IL

Service Area:  
Geotechnical, Water Resources

## Case Studies

This project was the design of the replacement railroad track, structures and appurtenances of the existing Iowa Interstate Railroad (IAIS) freight line track from Wyanet, Illinois to Moline, Illinois, a distance of 52 miles, for the future development of the Illinois Department of Transportation (IDOT) express passenger train service from Chicago to The Quad Cities. The speed of the freight trains on the existing track is limited to about 35 MPH. The planned speed of the express passenger trains is up to 80 MPH. This will require extensive upgrades of the bridges, culverts, track and other facilities. As subconsultant, Reitz & Jens was responsible for geotechnical and water resources engineering for proposed bridges, pipe and box culverts, building foundations, pavements, new railroad track alignment and retaining walls.



## Gravois Greenway – Grants Trail to RDP

Year Completed:  
2020

Client/Location:  
Great Rivers Greenway District;  
St. Louis City and County, MO

Service Area:  
Civil, Geotechnical, Water  
Resources, Construction  
Services

This 2+ mile extension of a multi-use trail connects Gravois Greenway Grant's Trail from the trailhead at Orlando's to the River des Peres Greenway. Reitz & Jens provided all civil, geotechnical and water resources engineering services during planning, design and construction, acted as regulatory liaison for all civil engineering aspects of the project, and provided civil and geotechnical quality control services during construction. The project was awarded ACEC's 2022 Engineering Excellence Award. The project required evaluation of alternative alignments through fully developed areas of St. Louis City and County including residential, commercial, industrial and institutional land uses, as well as private, local and state highways, active railroads, major public utilities, and Gravois Creek and the River des Peres. Community Relations aspects included helping to organize GRG's Community Advisory Committee process, multiple public meetings as well as outreach to individual stakeholders. The project was built in three (3) phases meeting different contract and specifications formats including Phase 2 which received Federal Aid with GRG as the Local Public Agency (LPA). The project included two bridges, a tunnel, a boardwalk, over 45,000 square feet of retaining walls up to 15 feet high, water quality improvements, and geotechnical mitigations. More than half the alignment was in the MoDOT right-of-way and required additional coordination for utility relocations, approvals and licensing.

## Contact Us

Jeff Bertel, Principal  
1055 Corporate Square Drive  
St. Louis, MO 63132  
O: 314.993.4132  
C: 314.581.8488

Headquarters/Local Office  
1055 Corporate Square Drive  
St. Louis, MO 63132

Branch Office  
223 North Main St Street, Suite 5  
St. Charles, MO 6 O 63301