

FIRM OVERVIEW

SOUTHWEST MISSOURI'S LARGEST ENGINEERING FIRM

YEAR ESTABLISHED

2003

POINT OF CONTACT

Matt Miller, PE | Vice President
Civil Engineering Manager
mmiller@tothassociates.com

PHONE: (417) 888-0645

ADDRESS:

1550 E Republic Road
Springfield, MO 65804

OUR SERVICES

Civil Engineering

- Transportation
- Potable Water
- Wastewater
- Stormwater Management
- Site Development

Electrical Engineering

- Electric Utility System Planning
- Substation Design
- Transmission & Distribution
- Communication Design

Structural Engineering

- Building Design
- Structural Assessment
- FEMA Tornado Safe Rooms
- Bridge Designs
- Sport Facilities

Land Services

- Land Surveying
- Right of Way and Easements
- Land Acquisitions

GIS / Mapping

Grant Writing & Administration

Utility Rates Services



TOTH was established in December of 2003, initially specializing in electric utility engineering. Since this time, we've grown into a multidisciplinary firm that features core services in electrical, civil, and structural engineering. Our team of professional and technical staff includes land surveyors, CPAs, grant writers, grant administrators, GIS technicians, and field technicians. Together we provide services to clients across the country, including municipalities, public and private utilities, educational institutions, and architects.

Our clients enjoy access to high-caliber, top engineers and highly skilled support staff dedicated to providing an enhanced customer experience. We can do this because we're large enough to have a broad array of in-house resources, including top talent, but not so large that our clients miss out on personalized attention from senior-level engineers and personnel. The result is a synergistic environment where clients benefit from our entire team's combined efforts, professional expertise, specialized knowledge, and attention.

We are proud to be strategic partners on a wide variety of projects, including multi-million-dollar wastewater systems, water and stormwater systems, roadway/traffic design, and an array of commercial and public buildings, including hospitals, schools, and FEMA safe rooms, plus large-scale transmission & distribution line design, system planning, substation design, and switch stations. Such projects require a combination of deep industry experience, responsive and communicative staff, creative problem solving, and customized solutions. Our team goes above and beyond, delivering consistent results no matter how complicated the project.

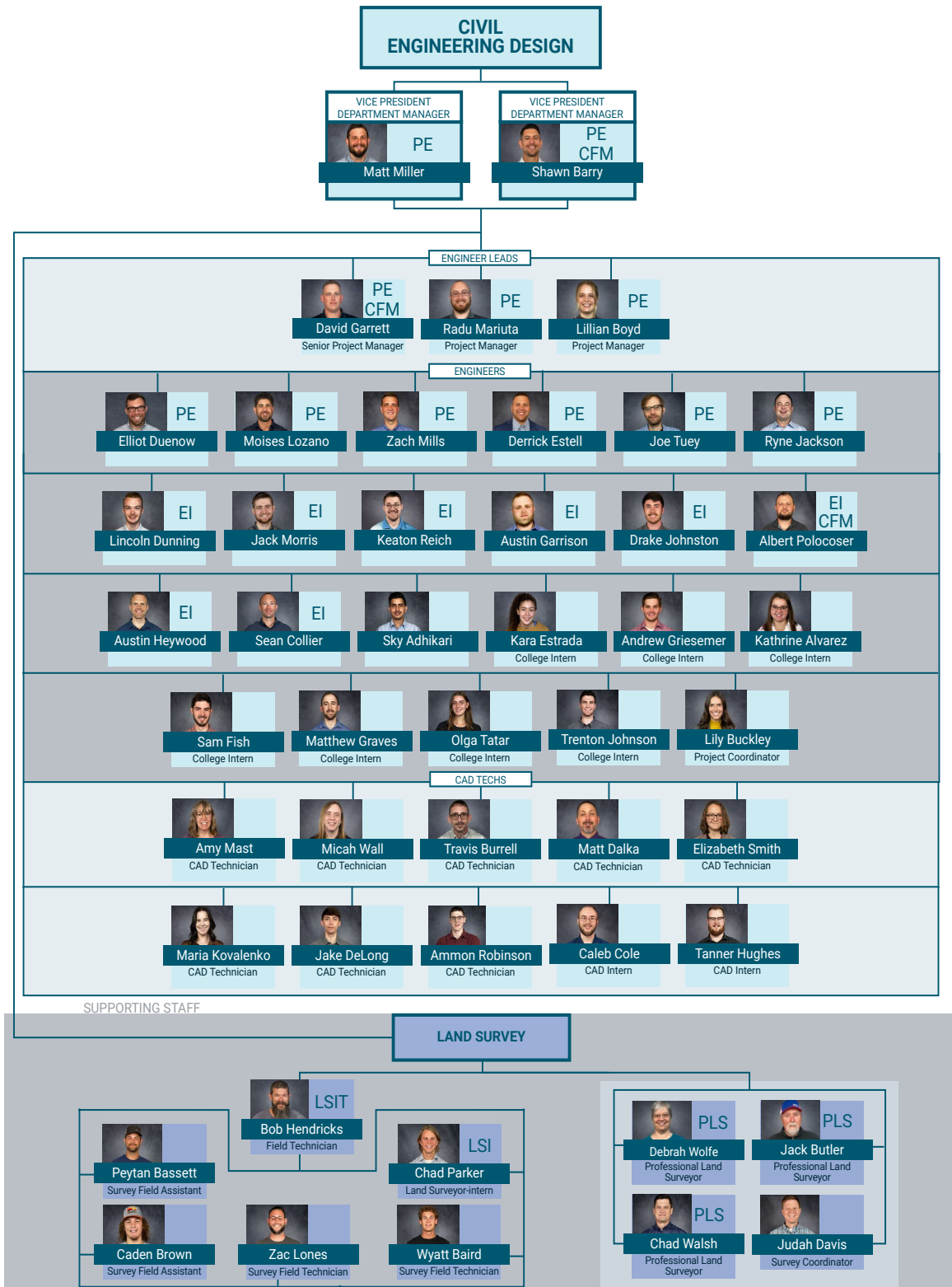
At the end of the day, building relationships with clients for the good of the communities we serve is our mission. We work hard to cultivate a positive working rapport with local utilities, contractors, engineers, regulatory agencies, and materials vendors. That collaborative approach demonstrates our firm's maturity, openness, agility, and willingness to understand and accommodate other project stakeholders' needs.



KEY PERSONNEL

CIVIL DEPARTMENT & SURVEYING

We continue to be Southwest Missouri's largest engineering firm, with a team of 180 professionals and growing each year. Included in our growth in 2022 and 2023 has been adding to our Civil Engineering Department. TOTH's civil team is composed of 38 talented people. That consists of 20 engineers (11 PEs, 8 EIs, 1 Engineer), ten (10) CAD technicians, one (1) project coordinator, and seven (7) college interns. Additionally, the Land Survey Department serves the Civil Engineering Department. That level of staffed professionals is integral to our ability to offer services promptly and efficiently. You can be confident that TOTH has the capacity to provide the services for the scope of work.



RELEVANT SERVICES

SPECIALIZED EXPERIENCE & TECHNICAL COMPETENCE

We prioritize working closely with clients to design and construct projects on time and within budget. Our project managers have experience managing large-scale design and construction projects. One chief advantage of a multidisciplinary engineering consultant such as TOTH is that our project managers have a broad spectrum of resources available in-house, which can be tapped for any given project. TOTH can provide the needed engineering expertise and has the project-level experience you require to complete the engineering for your project. Services that we provide that are relative to your project are:

TRANSPORTATION ENGINEERING — TOTH's civil engineering group has experience on projects that range across the full spectrum of transportation engineering. Our team's design experience includes roadway and modern intersection design that emphasizes vehicular safety, level-of-service, pedestrian access, safety, and ADA requirements. Additionally, over the last five years, TOTH has become a leader in working with school districts and municipalities across the State to help make our campuses and cities more pedestrian friendly. Our work in transportation ranges from municipalities to school districts.

STRUCTURAL ENGINEERING — TOTH's structural department has designed over 500 buildings and bridges during the last decade. The design experience of the engineering staff ranges from single-span steel I-girder bridges to multi-span composite precast girders. The building design experience ranges from K-12 Schools to multi-story safe rooms, hospitals, and office complexes. Professional services go beyond building design and bridge design, including specialty engineering such as electrical substation structures, FEMA safe rooms, as sport facilities. Project specialties include but not limited to: Municipal, Judicial, Manufacturing, Commercial, Early Childhood, K-12, Higher Education, Health Care, Sport Facility, FEMA Safe Room, and Structural Investigations.

SURVEYING — TOTH's land surveying and mapping services group plays an integral role in project planning and development: helping our clients anticipate and address the dynamics of implementing a project in the context of a local community of landowners, regulatory entities, and other stakeholders. Our team of project technicians and on-site representatives provide clients and constituents alike with a professional, knowledgeable, and approachable team for the duration of each project: from initial stages of research and outreach all the way through construction to final site clean-up. TOTH's land surveying department services commercial and industrial clients for both internal and external clients.

Our work in transportation ranges from municipalities, counties, developers, franchisees, local and state governments to school districts.

PARTIAL LIST OF TOTH'S RECENT TRANSPORTATION EXPERIENCE

CDBG Funded Roadway Improvements, Rockaway Beach, MO	CDBG Funded Roadway Improvements, Mountain Grove, MO
Wyota & Mohawk Drive Roadway Improvements, Lebanon, MO	Goldenwood Road Roadway Improvements Lebanon, MO
4th Street Corridor Study, Lebanon, MO	Downtown ADA Improvements, Lebanon, MO
Highway 32 Sidewalk Improvements, Buffalo, MO	Roadway Improvements - Preliminary Engineering Report Gainesville, MO
Resurfacing & ADA Improvements (Sunshine, National, & Battlefield), Springfield, MO	Main Street Sidewalk Improvements, Buffalo, MO
Tracker Road Improvements, Nixa, MO	Quannah Parker Road Improvements, Rogersville, MO
Ivey & Beck Intersection Improvements, Lebanon, MO	Delaware Court Road Improvements, Rogersville, MO
Fox Creek Road Improvements, Rogersville, MO	Cherokee Court Road Improvements, Rogersville, MO
Marquand School District Parking Lot Improvements — MO	Farmington School District Jefferson Elementary Bus Loop — MO
Forest Avenue Improvements, Bolivar, MO	School of the Osage Early Childhood Center Traffic Analysis — MO
Chariton Valley Electric Cooperation Traffic Analysis — MO	Loren and Karla Stormwater Improvements, Springfield, MO
State Highway 13 Widening, Higginsville, MO	Commercial Shell Building Traffic Impact Study, Gardner, KS
Sears Road Improvements, West Plains, MO	Hampton Avenue Stormwater Improvements, Springfield, MO
18th Street Improvement Study, Ozark Special Road District	17th Street Box Culvert Improvements, Ozark Special Road District

PROJECT APPROACH

QUALITY CONTROL & QUALITY ASSURANCE

TOTH understands that the quality of our work directly reflects the character of your organization. We take that very seriously. While we want our work to exhibit the qualities we deem essential to our company, more importantly, we want it to be an impeccable representation of your organization.

Quality, cost control, and timeliness begins with building an exceptional team and establishing the quality process upfront. The process will provide continuous measurement throughout the project and is specified and agreed on by the stakeholders within the kickoff phase. The project's success requires the coordinated efforts of all the team members. Therefore, throughout a project's lifecycle, we take several measures to maintain quality and assure expected completion outcomes.

1 Build an Exceptional Team

First, we believe quality begins with the team members assigned to your projects. Your team will be composed of highly experienced engineers, technicians, and support personnel. Each team member we assemble for your projects will have the qualifications and the vast work history needed to complete the scope of work requested. You will have senior level engineers and a highly qualified support team. We genuinely pride ourselves on being accessible to our clients. Therefore, easy access will be provided to your project manager and multiple points of contact for team leaders involved in the various project disciplines.

Subsequently, providing ongoing training and up-to-date resources is crucial for employees to maintain exceptional levels of production. TOTH provides training to its employees from industry-leading institutions, such as Safe Engineering Services & Technologies (SES), Schweitzer Engineering Laboratories (SEL), IEEE, ASCE, FEMA, Autodesk University, and many others.

2 Follow Through & Review

We have an internal review process where a second engineer reviews each drawing to ensure that the necessary details are present and accurate before issuing the construction drawings. TOTH sets milestones throughout the project to review progress, such as 30%/60%/90% drawing reviews, to allow for additional evaluation of the design by the team before the final product.

3 Utilize Modern Technology & Techniques

Clearly communicating the design is central to a project's quality as well as its timely completion and staying within budget. TOTH invests in numerous software packages that assist employees in design, drafting, and project management. Ultimately, this allows us to provide a quality set of engineering prints and effectively manage project timelines. Our deliverables have reduced production time, are accurate, have continuity between drawings, and reduces questions from the contractor, which is essential to meeting construction budgets and timelines.