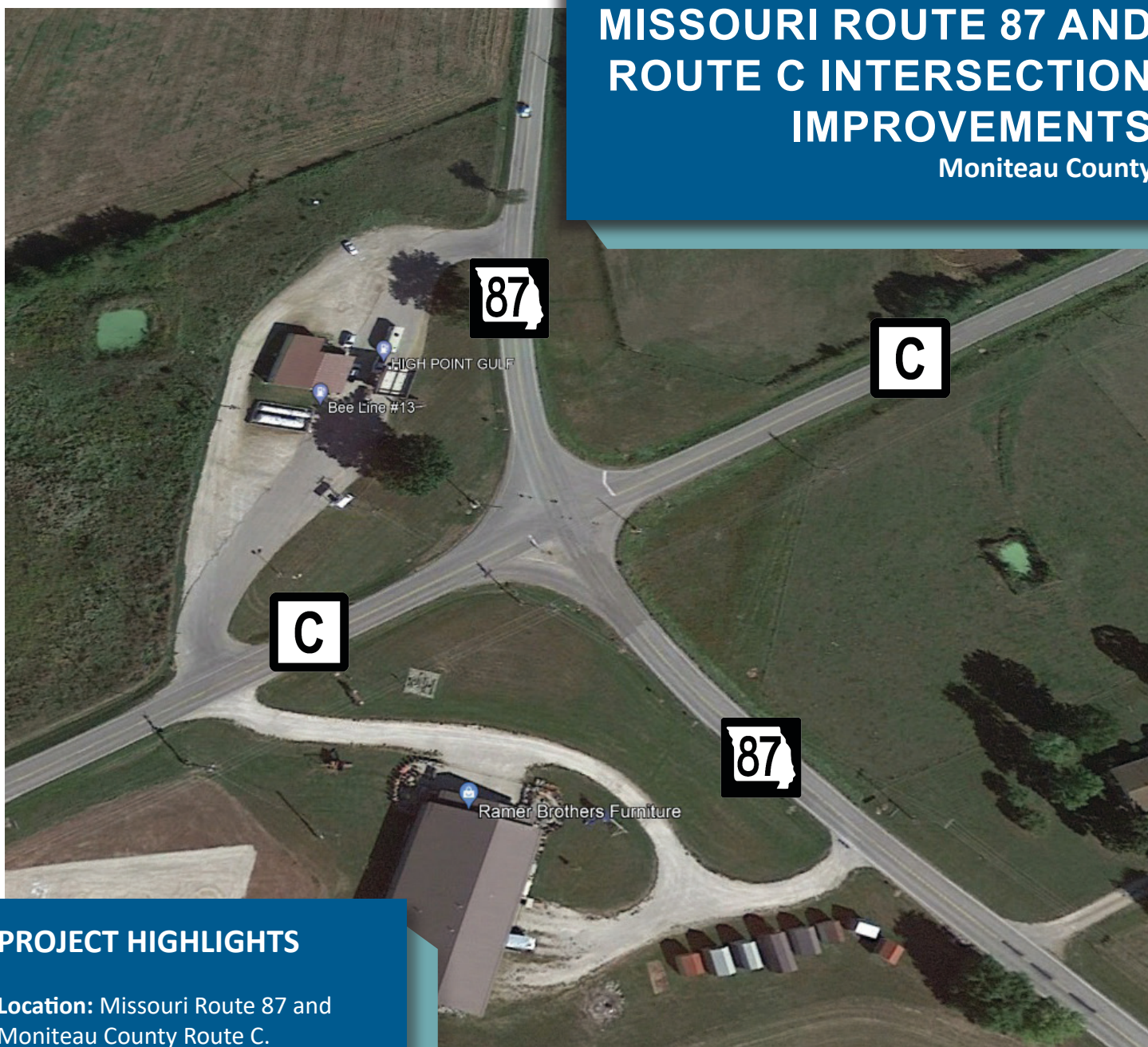


MISSOURI ROUTE 87 AND ROUTE C INTERSECTION IMPROVEMENTS

Moniteau County



PROJECT HIGHLIGHTS

Location: Missouri Route 87 and Moniteau County Route C.

Type of work: Reconfigure intersection to improve safety and reduce severe crashes.

Construction expected: 2025.

Estimated cost: \$2.1 million including engineering and construction costs.

Subject to change. Information current as of January 2024.



Scan to visit the
project's webpage.



Intersection history

On average, 1,176 vehicles per day use Route 87 north of the intersection and 1,001 vehicles per day use Route 87 south of the intersection while 1,895 vehicles per day use Route C west of the intersection and 1,694 vehicles per day use Route C east of the intersection.

Every five years, since 2002, this intersection has averaged 12 crashes with at least one resulting in a fatality or serious injury - and the number of crashes is increasing. In just the past five years, the intersection has seen one crash that resulted in two fatalities, one serious injury crash, and 12 other crashes with minor or no injuries.

Traffic control safety improvements

MoDOT has made several safety improvements to the intersection in an attempt to reduce crashes and the severity of those crashes:

- Stop ahead warning signs.
- Crossroad warning signs.
- Interactive warning flasher for Route 87 motorists.
- Constant red flasher for Route C motorists.
- Improved sight distance by clearing the right of way.
- Rumble strips on Route C.

These measures, implemented over 13 years have not been effective and severe crashes are increasing. MoDOT is now considering ways to improve safety through a reconfigured intersection.

Designing a new intersection

The goal of a new intersection design is to reduce the number and severity of crashes. After evaluating potential maintenance requirements, traffic patterns, location, and cost associated with various options, an intersection without a signal was recommended. Preliminary plans focus on a roundabout. At this time, improvements are anticipated to take place in 2025.

Roundabout vs. signal

Traffic patterns, location, cost, potential maintenance requirements, and safety factors played a role in the recommendation for a non-signalized intersection. Roundabouts increase safety, reduce yearly maintenance costs, and have a longer lifespan when compared to a standard signalized intersection.

Stay up-to-date

Visit www.modot.org/missouri-route-87-and-route-c-intersection-improvements-moniteau (or scan the QR code) for more information about the project and to sign up for updates.



Project Manager Mia Peters
CDCR@modot.mo.gov
888 ASK MODOT (1-888-275-6636)