



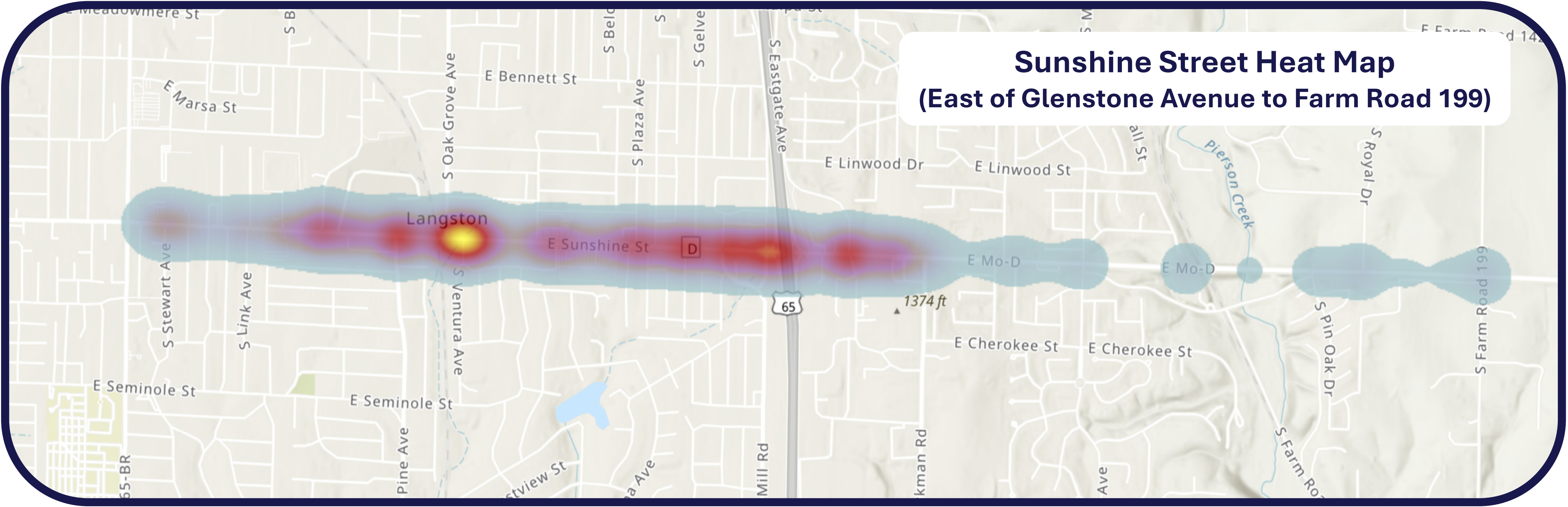
Issue: Corridor Safety

Safety Statistics (2016-2020)

- 728 TOTAL CRASHES
- 5 Fatal Crashes
- 13 Disabling Injury Crashes
- 305 Minor Injury Crashes
- 405 Property Damage Only

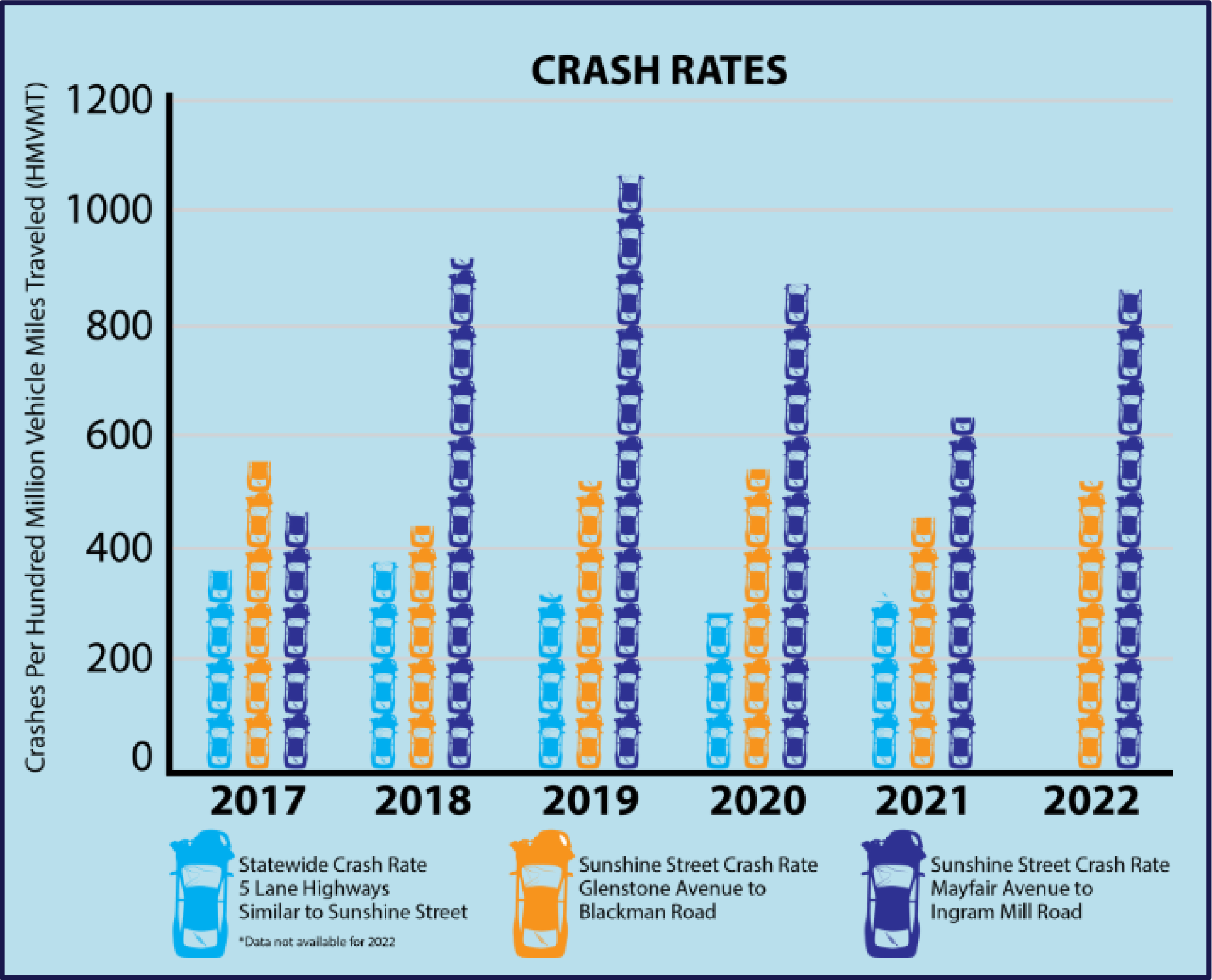
An additional 297 “Property Damage Only” crashes were reported to Springfield Police Department.

TOTAL CRASHES = 1,025

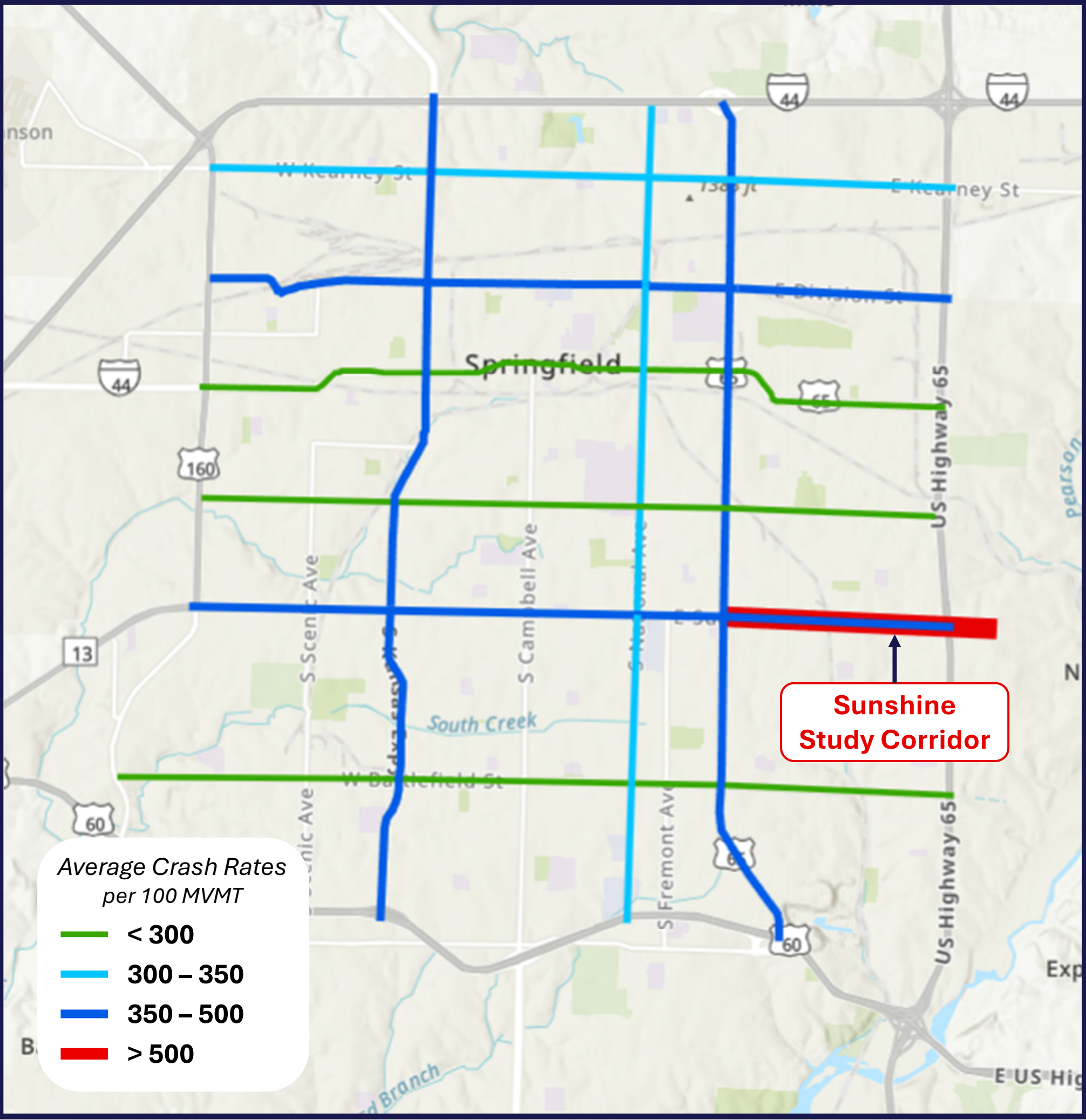


How Does Study Corridor Compare to....

Similar Statewide Routes



Similar Springfield Routes



	Average Crash Rate per 100 MVMT	Statewide (STW) Comparison
Sunshine Study Corridor*	568.41	2.06x
Kansas	386.63	1.40x
Glenstone	380.33	1.38x
Sunshine Total Corridor**	370.99	1.34x
Division	351.57	1.27x
Kearney	319.03	1.16x
National	302.42	1.10x
Chestnut	287.57	1.04x
Grand	281.69	1.02x
Battlefield	276.55	1.00x

Statewide Crash Rate = 276.16 for 5 Lane Highways similar to Sunshine per 100 Million Vehicle Miles Traveled (MVMT)

Sunshine Street Distinction: *Glenstone Avenue to Blackman Road; **West Bypass to US-65