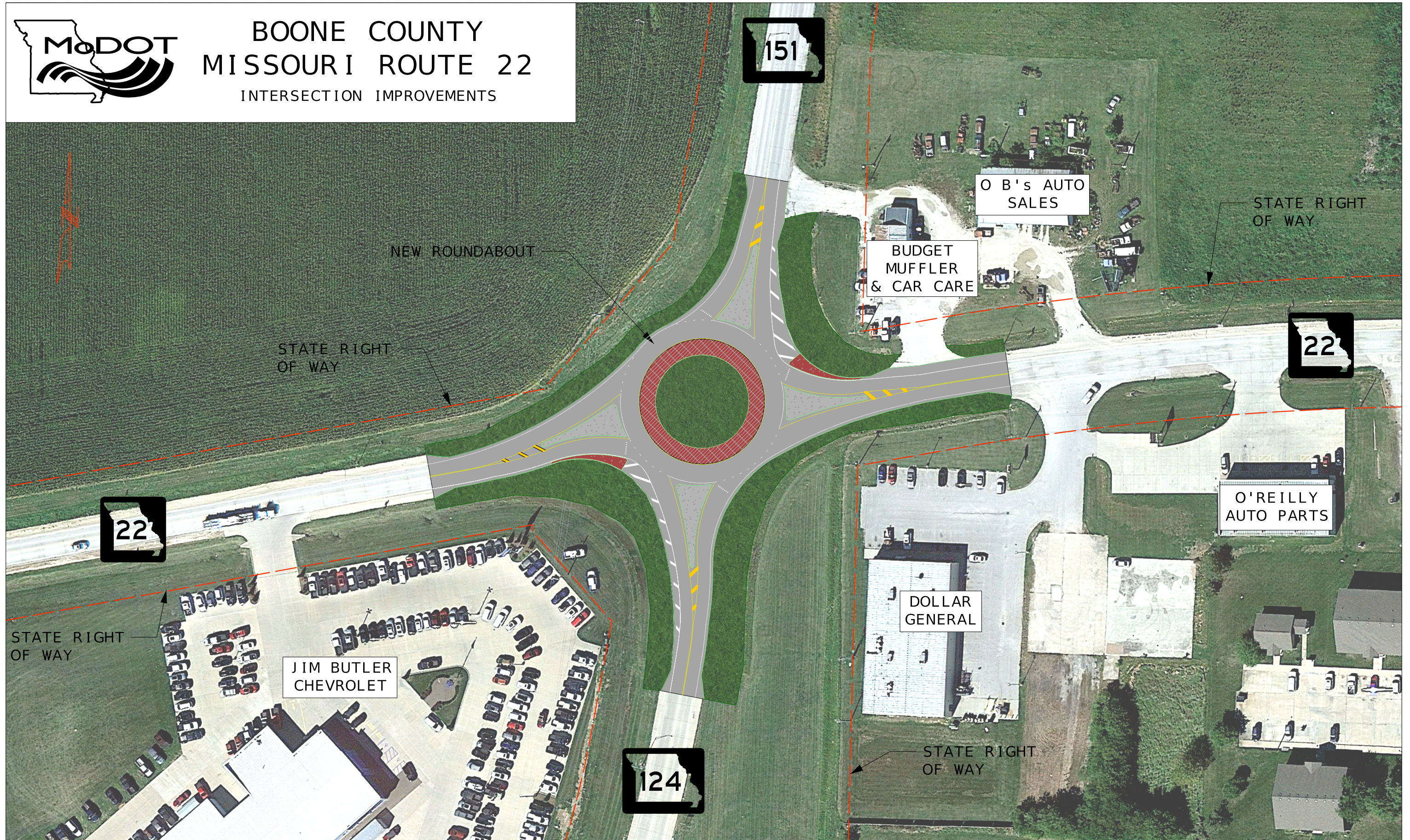




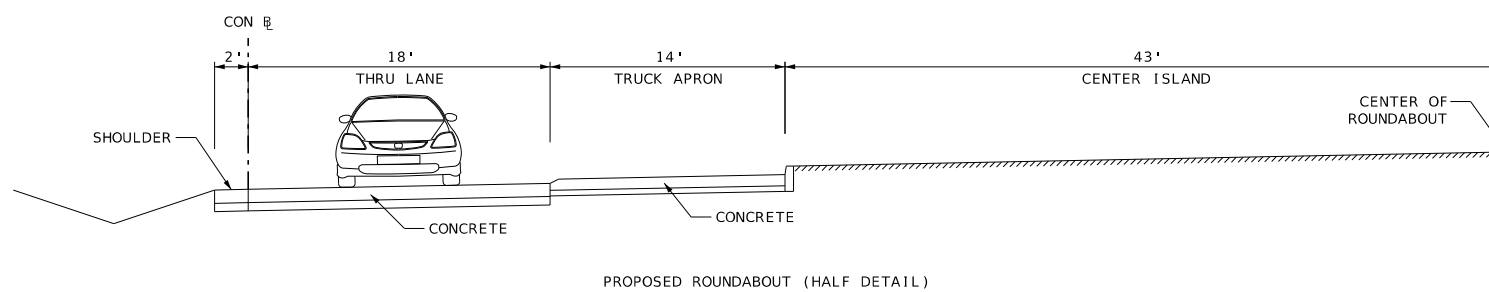
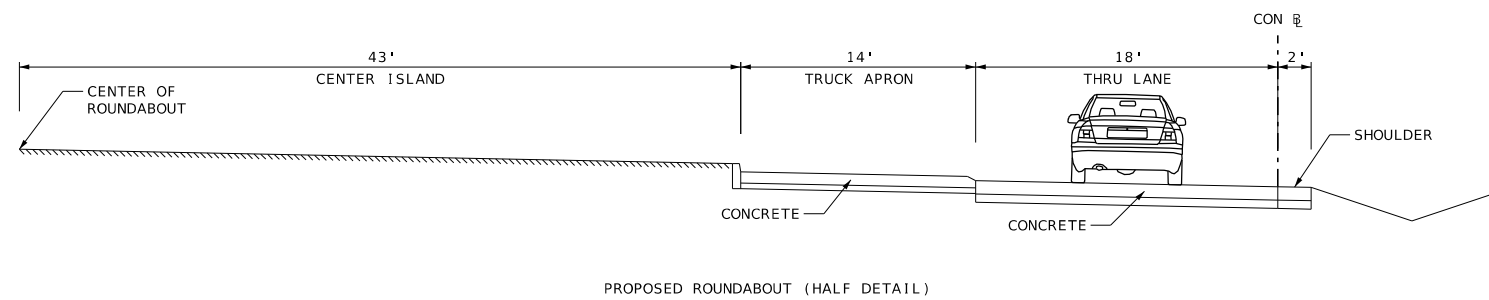
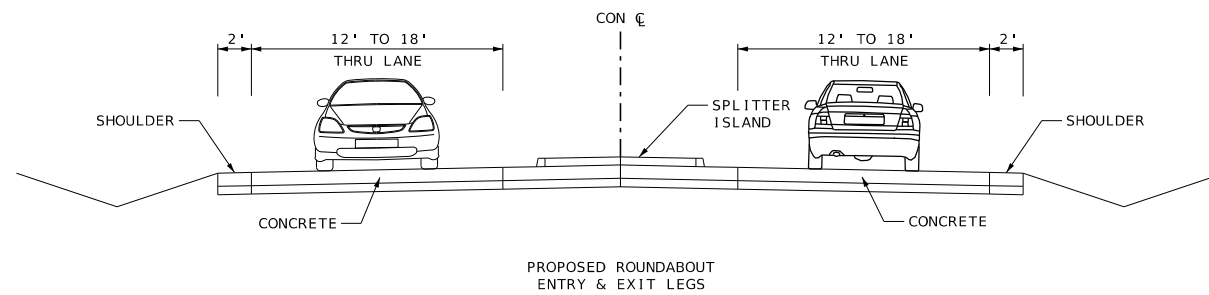
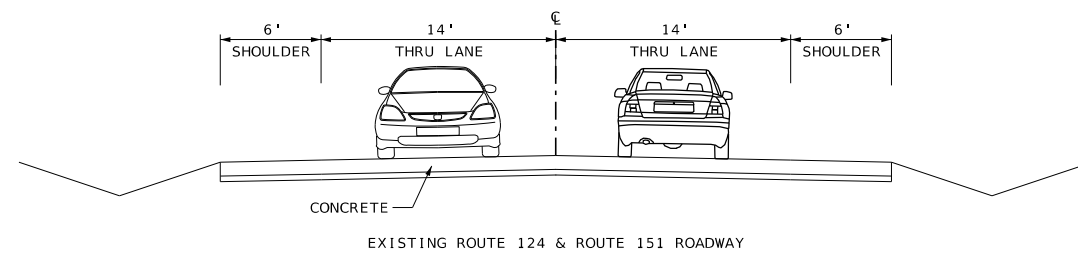
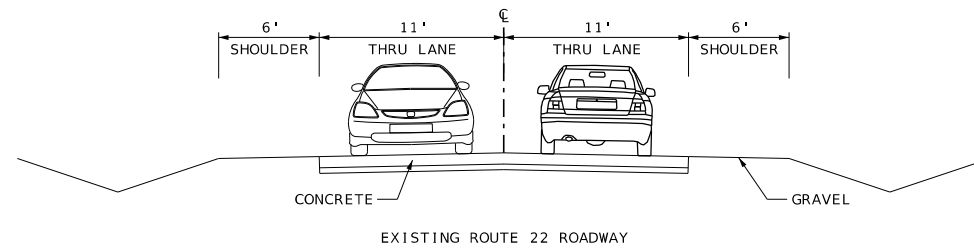
BOONE COUNTY
MISSOURI ROUTE 22
INTERSECTION IMPROVEMENTS





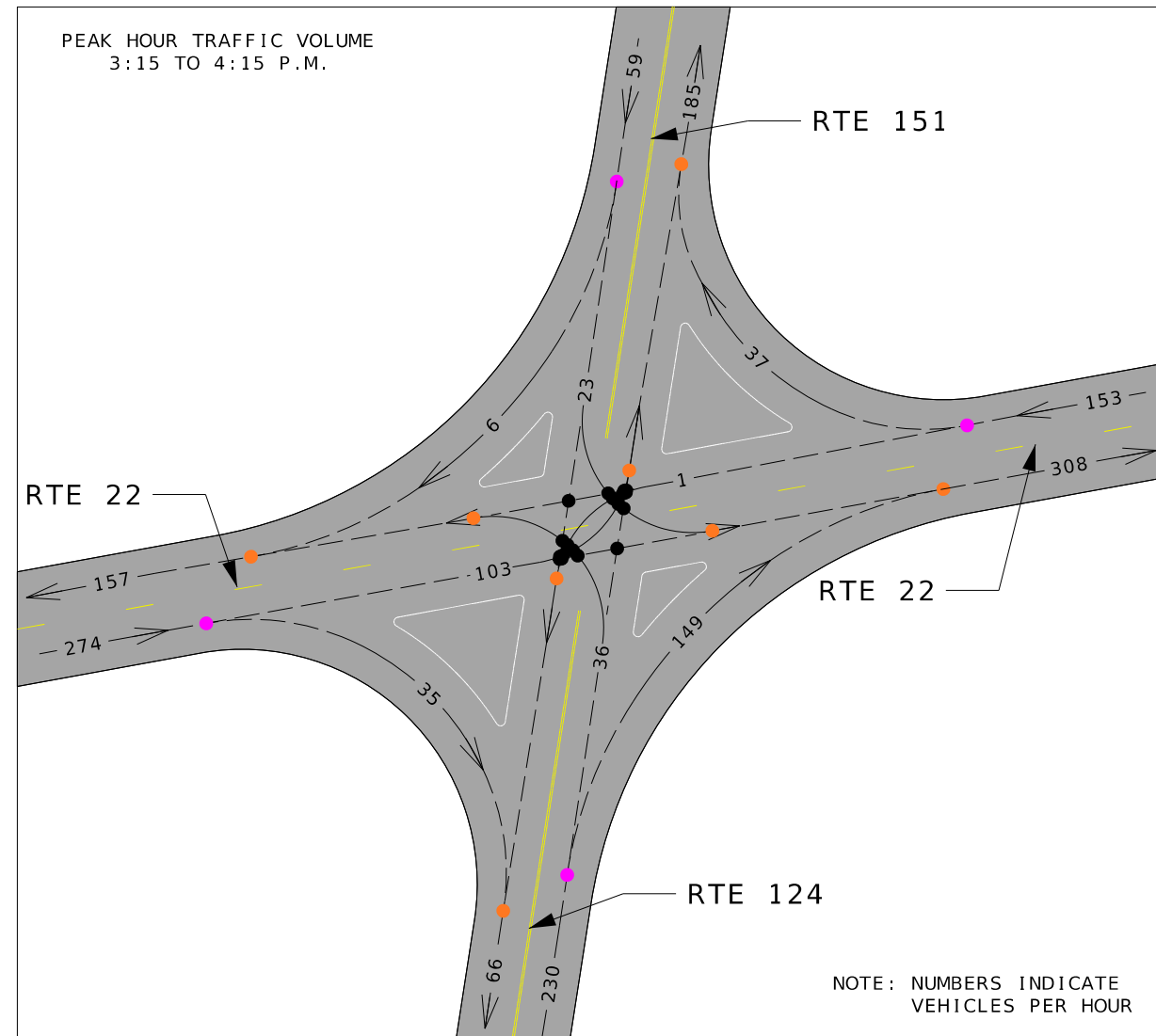
TYPICAL LANE WIDTHS

BOONE COUNTY MISSOURI ROUTE 22
INTERSECTION IMPROVEMENTS





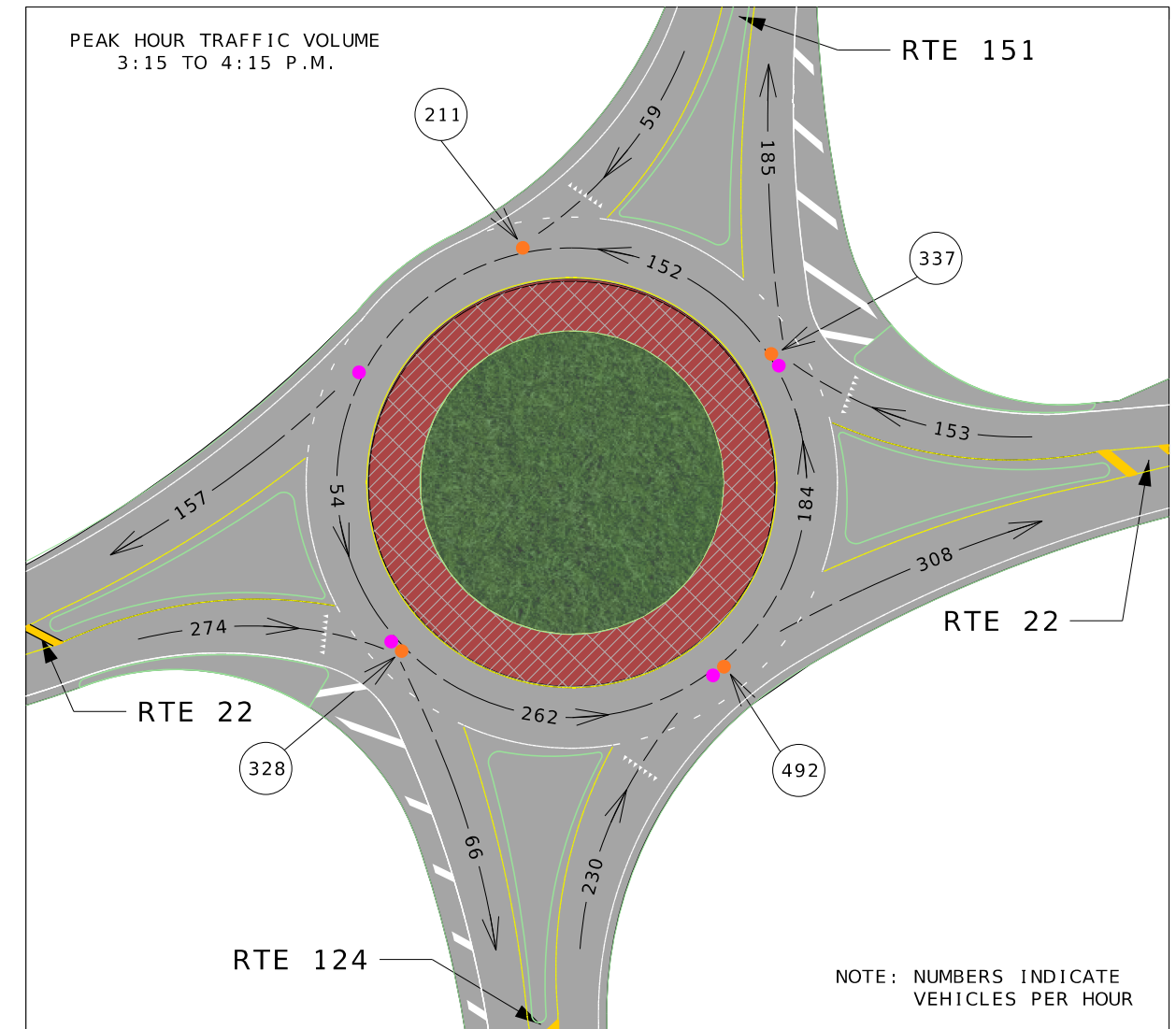
BOONE COUNTY MISSOURI ROUTE 22 ROUNDAABOUT INTERSECTION TURNING MOVEMENTS



FOUR-LEGGED INTERSECTION - 30 CONFLICT POINTS

- 8 MERGING CONFLICT POINTS
- 4 DIVERGING CONFLICT POINTS
- 18 CROSSING CONFLICT POINTS

- MERGING CONFLICT POINT - TYPICAL COLLISIONS ASSOCIATED WITH MERGING CONFLICT POINTS:
-SIDESWIPES
-REAR-END COLLISIONS
- DIVERGING CONFLICT POINT - TYPICAL COLLISIONS ASSOCIATED WITH DIVERGING CONFLICT POINTS:
-SIDESWIPES
-REAR-END COLLISIONS
- CROSSING CONFLICT POINT - TYPICAL COLLISIONS ASSOCIATED WITH CROSSING CONFLICT POINTS:
-ANGLED COLLISIONS



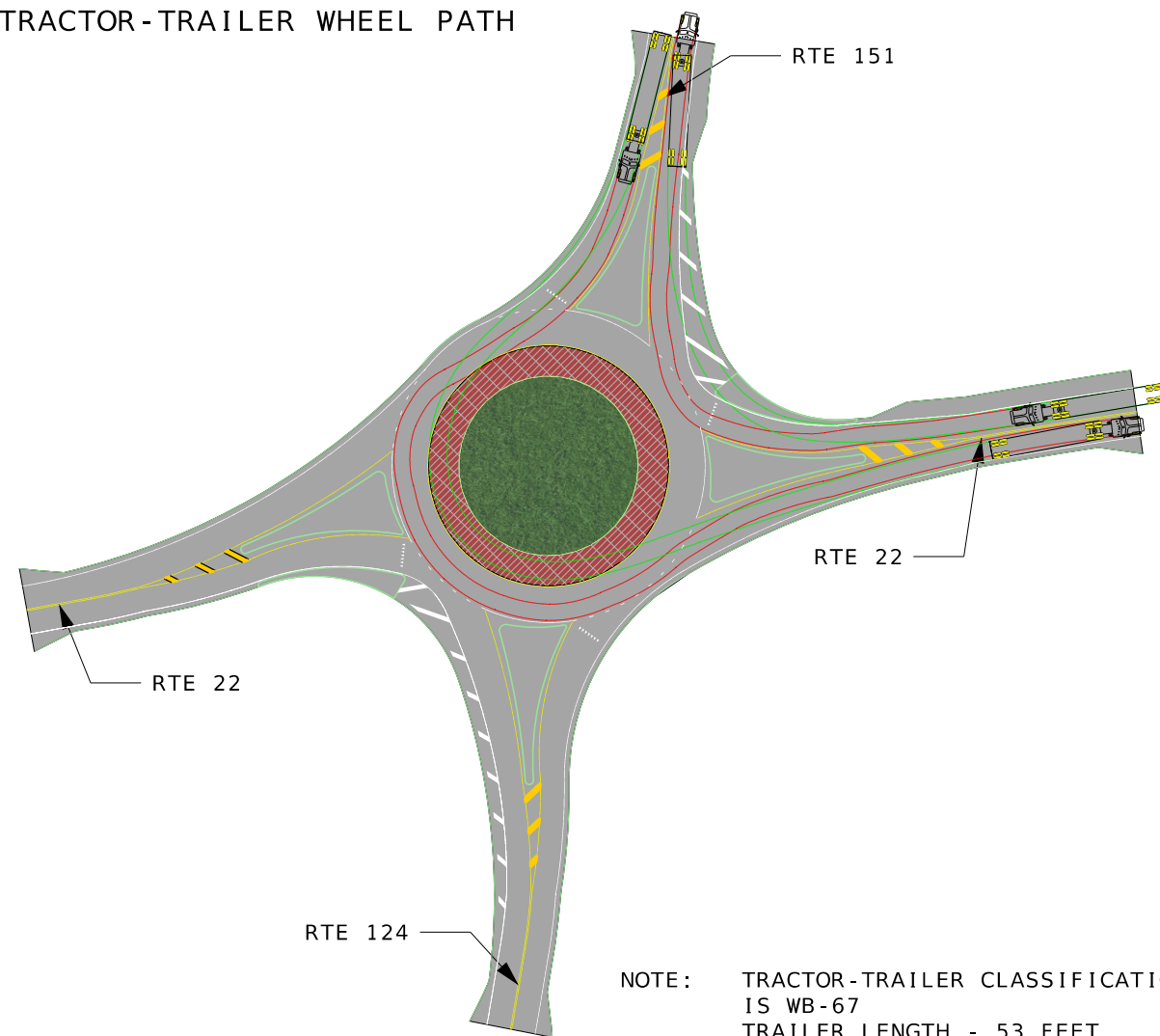
ROUNDAABOUT - 8 CONFLICT POINTS

- 4 MERGING CONFLICT POINTS
- 4 DIVERGING CONFLICT POINTS
- 0 CROSSING CONFLICT POINTS



BOONE COUNTY MISSOURI ROUTE 22 ROUNDAABOUT INTERSECTION WHEEL PATH

TRACTOR-TRAILER WHEEL PATH



NOTE: TRACTOR-TRAILER CLASSIFICATION
IS WB-67
TRAILER LENGTH - 53 FEET
TRUCK WHEELBASE - 19.5 FEET

PASSENGER CAR WHEEL PATH

