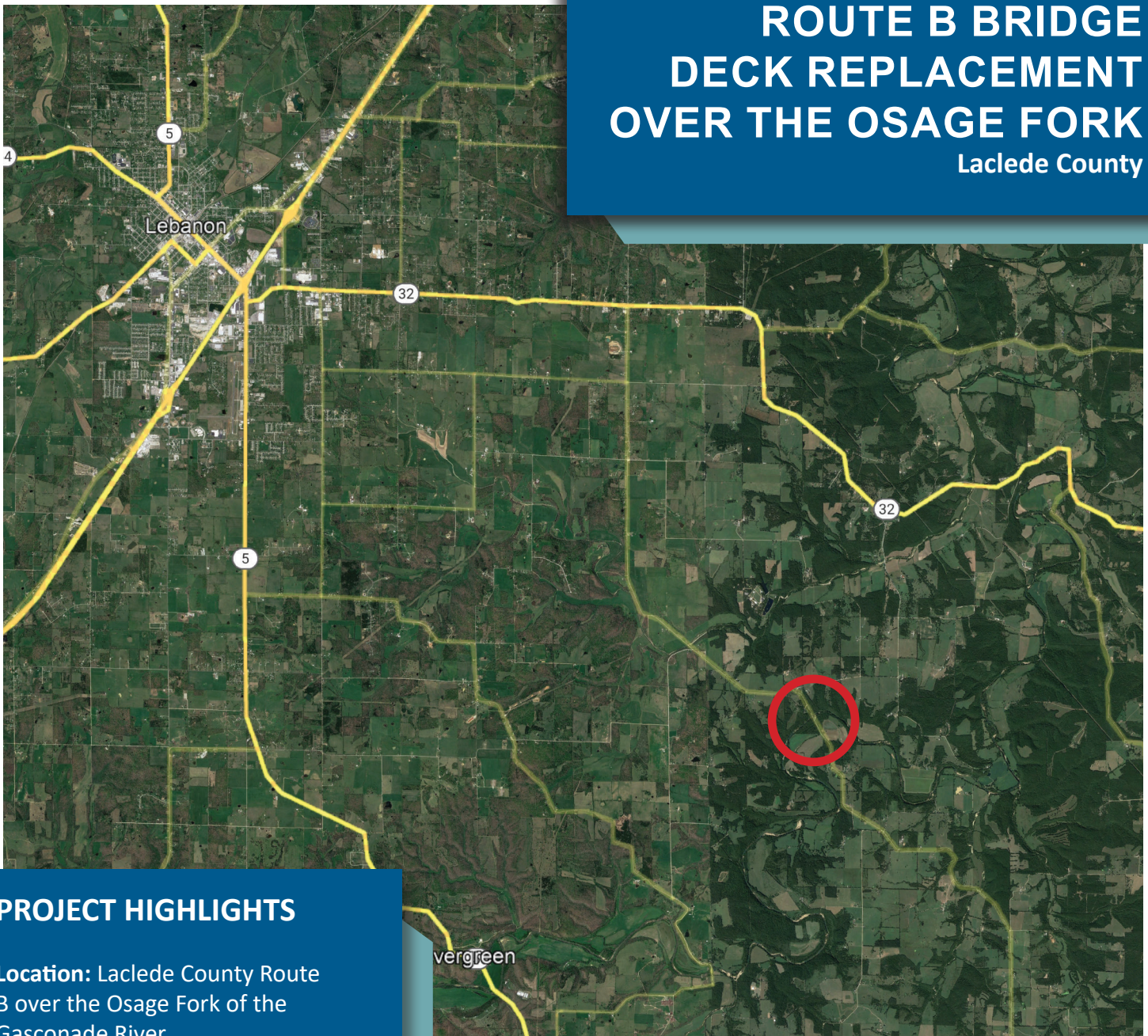


ROUTE B BRIDGE DECK REPLACEMENT OVER THE OSAGE FORK

Laclede County



PROJECT HIGHLIGHTS

Location: Laclede County Route B over the Osage Fork of the Gasconade River.

Traffic impact: Bridge will be closed for approximately 12 weeks for construction.

Budget: \$1.4 million.

Construction expected: 2024.

Average daily traffic: 1,112 vehicles.

Subject to change. Information current as of October 2023.



Scan to visit the
project's webpage.

PROJECT DETAILS



Districts Impacted

Central

Counties Impacted

Laclede

Project Status

Planning Stage

What work is being planned?

The Missouri Department of Transportation and its consultant are designing a new bridge deck, or driving surface, for Laclede County Route B over the Osage Fork of the Gasconade River. The new deck will be wider at 26 feet (the existing structure is 24 feet). In addition, all four corners of the bridge will have new guardrail installed.

What will the project cost?

The estimated total construction cost is approximately \$1.4 million. This cost may change.

How will traffic be affected?

The contractor will close the bridge to all traffic through the completion of the project, which is expected to take roughly 12 weeks. A signed detour will be posted over Missouri Routes 32 and 5 and Laclede County Route O.

When will the work take place?

The work will go out for bid in February 2024 and construction is expected to be completed by Dec. 1, 2024.

As with all projects that are in the planning stage, these dates are subject to change.

Will the Long Ford River Access Area be open?

The Long Ford River Access Area, immediately south of the bridge, will remain open through the project. Access directly underneath the bridge may be restricted during some portions of the project.

How can I learn more?

You may learn more by contacting us toll-free at 1-888-ASK-MoDOT (275-6636) or visit the project page by scanning the QR code below.



[www.modot.org/
route-b-bridge-deck-
replacement-over-
osage-fork-laclede](http://www.modot.org/route-b-bridge-deck-replacement-over-osage-fork-laclede)



Project Manager Ryan Libbert
CDCR@modot.mo.gov
888 ASK MODOT (1-888-275-6636)