

SUMMARY OF PROPOSED CHANGES & BENEFITS

The following changes to the corridor will be included in all options:

Changes	Benefits
<p>Route 54 Enhancements</p> <ul style="list-style-type: none"> Eastbound Route 54 will be restriped to allow for four lanes across the Missouri River bridge Pavement and shoulders will be expanded to allow for six lanes of traffic between Route 63/Route 94 and the bridge <p>Route 54 & Route 94 Interchange Enhancements</p> <ul style="list-style-type: none"> Add an acceleration lane from the eastbound Route 54 exit ramp onto eastbound Route 94 Add a deceleration lane from westbound Route 94 onto the eastbound Route 54 on-ramp <p>Route 94 & Wehmeyer Dr./Hitachi Energy entrance intersection will be realigned</p>	<ul style="list-style-type: none"> Improves eastbound traffic flow from Main Street to Route 63/Route 94 Provides a more safe transition for traffic entering eastbound Route 54 from Main Street Improves transitions onto and off-of eastbound Route 54 from Route 94 Improves safety at Route 94 and Wehmeyer Dr./Hitachi Energy entrance

The project also includes the following options for the reconfiguration for traffic entering westbound Route 54 from Cedar City Dr.

Option	Route 54 & Cedar City Dr. Interchange	Benefits to motorists
1	Includes the removal of the current ramp from Cedar City Dr. onto westbound Route 54	<ul style="list-style-type: none"> Increases safety by eliminating the conflict point of traffic entering westbound Route 54 Improves flow of traffic for southbound Route 63 and westbound Route 54 This option also includes additional shoulder expansion on the acceleration and deceleration lanes at Route 63 & Renz Farm Road Most effective use of tax-payer dollars with other existing routes already in place Does not impact Jefferson City or other properties in northwest of the interchange
2	Relocates the ramp from Cedar City Dr. onto westbound Route 54 to the northwest of the interchange, utilizing 4th St.	<ul style="list-style-type: none"> Maintains more direct-access to westbound Route 54 from Cedar City Dr. Improves flow of traffic for southbound Route 63 and westbound Route 54
3	Relocates the ramp from Cedar City Dr. onto westbound Route 54 to the northwest of the interchange as a loop ramp	<ul style="list-style-type: none"> Maintains more direct-access to westbound Route 54 from Cedar City Dr. Improves flow of traffic for southbound Route 63 and westbound Route 54 More consistent with typical interchange configurations

Route 94
Acceleration & Deceleration Lane
Improvements

Estimated Cost = \$430,725.00







J5P3497, Route 54, Cole/Callaway Counties

WB Route 54/Route W
Exit and Entrance Ramps

Estimated Cost = \$4,514,617.00 (Includes Route 94
accel/decel lanes, Wehmeyer/Hitachi intersection
realignment and Route 63 accel/decel Improvements.)

OPTION 1



OPTION 1





** TO BE CONSTRUCTED WITH OPTION 1 ONLY **

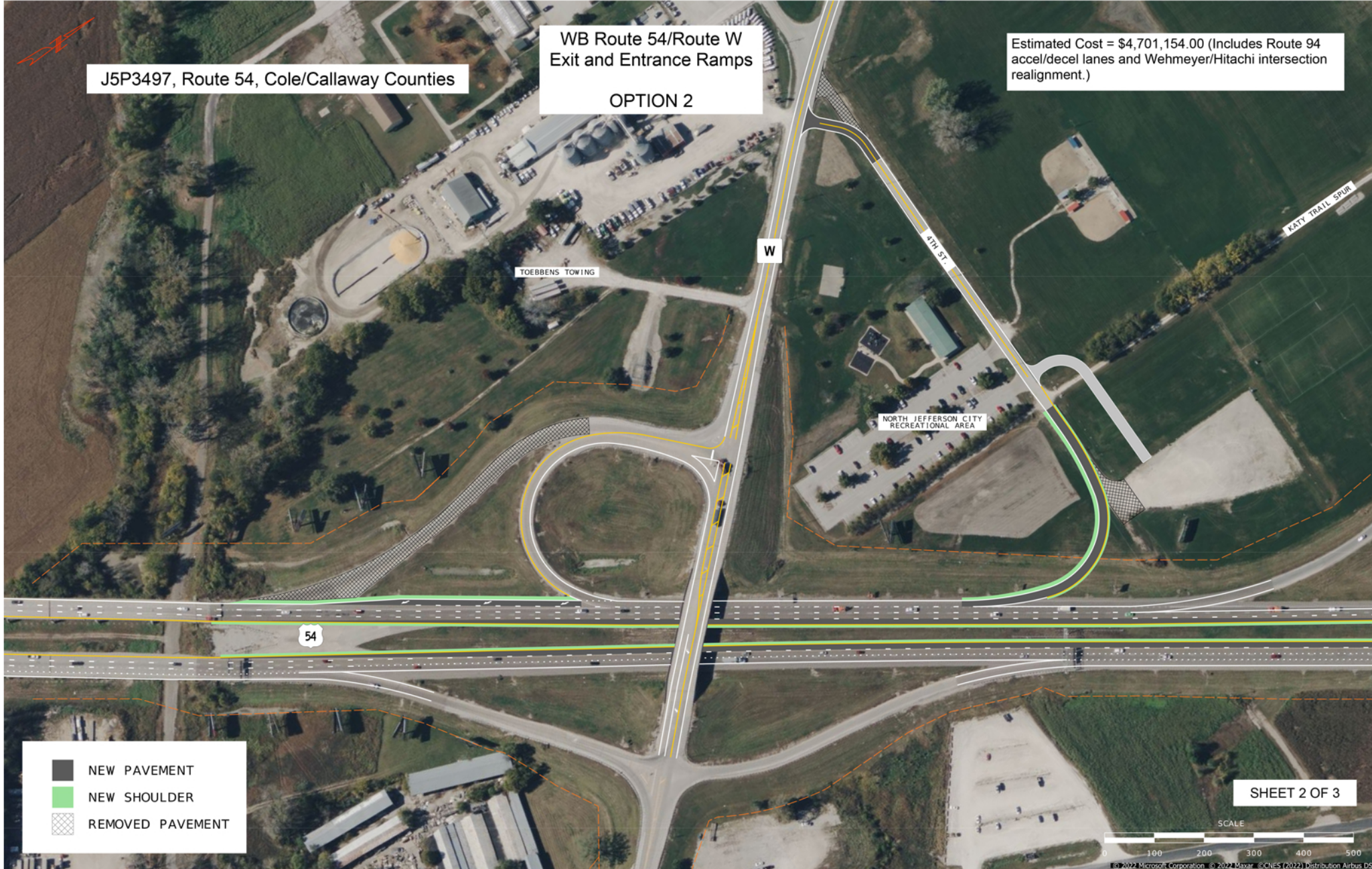


J5P3497, Route 54, Cole/Callaway Counties

WB Route 54/Route W
Exit and Entrance Ramps

OPTION 2

Estimated Cost = \$4,701,154.00 (Includes Route 94
accel/decel lanes and Wehmeyer/Hitachi intersection
realignment.)







J5P3497, Route 54, Cole/Callaway Counties

WB Route 54/Route W
Exit and Entrance Ramps

OPTION 3

Estimated Cost = \$4,989,579.00 (Includes Route 94
accel/decel lanes and Wehmeyer/Hitachi intersection
realignment.)

TOEBBENS TOWING

W

4TH ST.

NORTH JEFFERSON CITY
RECREATIONAL AREA

KATY TRAIL SPUR

54

- NEW PAVEMENT
- NEW SHOULDER
- REMOVED PAVEMENT

SHEET 2 OF 3

SCALE

0 100 200 300 400 500
© 2022 Microsoft Corporation © 2022 Maxar © CNES (2022) Distribution Airbus DS

