

**Route 30 Southwest section** with SL-0342E, SL-0342F, SL-0342G, SL-0342J, SL-0342K, SL-0342L, and SL-0342P.

Note that the limits are approximate and subject to refinement.

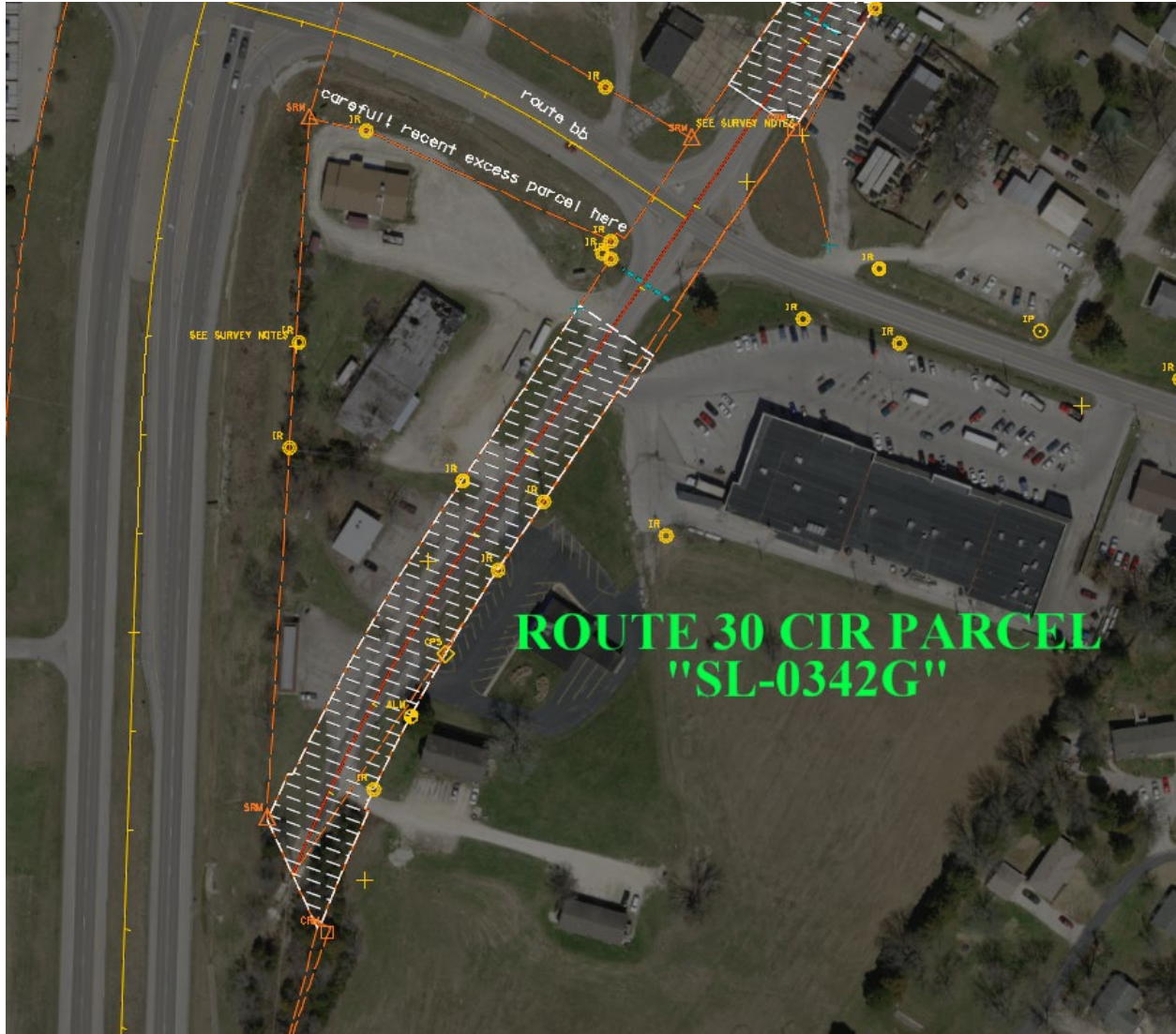
---

**SL-0342E** Approximately 0.6 miles of old route 30 (aka Gravois Road) from near Campbell drive westward to past Byrnesville Road. Also include connector road (Cedar Hill Road).



**SL-0342F** Approximately 0.4 miles of old route 30 (aka Veterans Drive) southward from near May Road to the northern line of the route BB-30 connector.



[illegible]



**SL-0342J** Local Hillsboro Rd stub.



**SL-0342K** Silver Lane stub just west of J



**SL-0342L**, Cedar Springs stub.



**SL-0342P** Approximately 0.3 miles, Pete O'Brien Road

