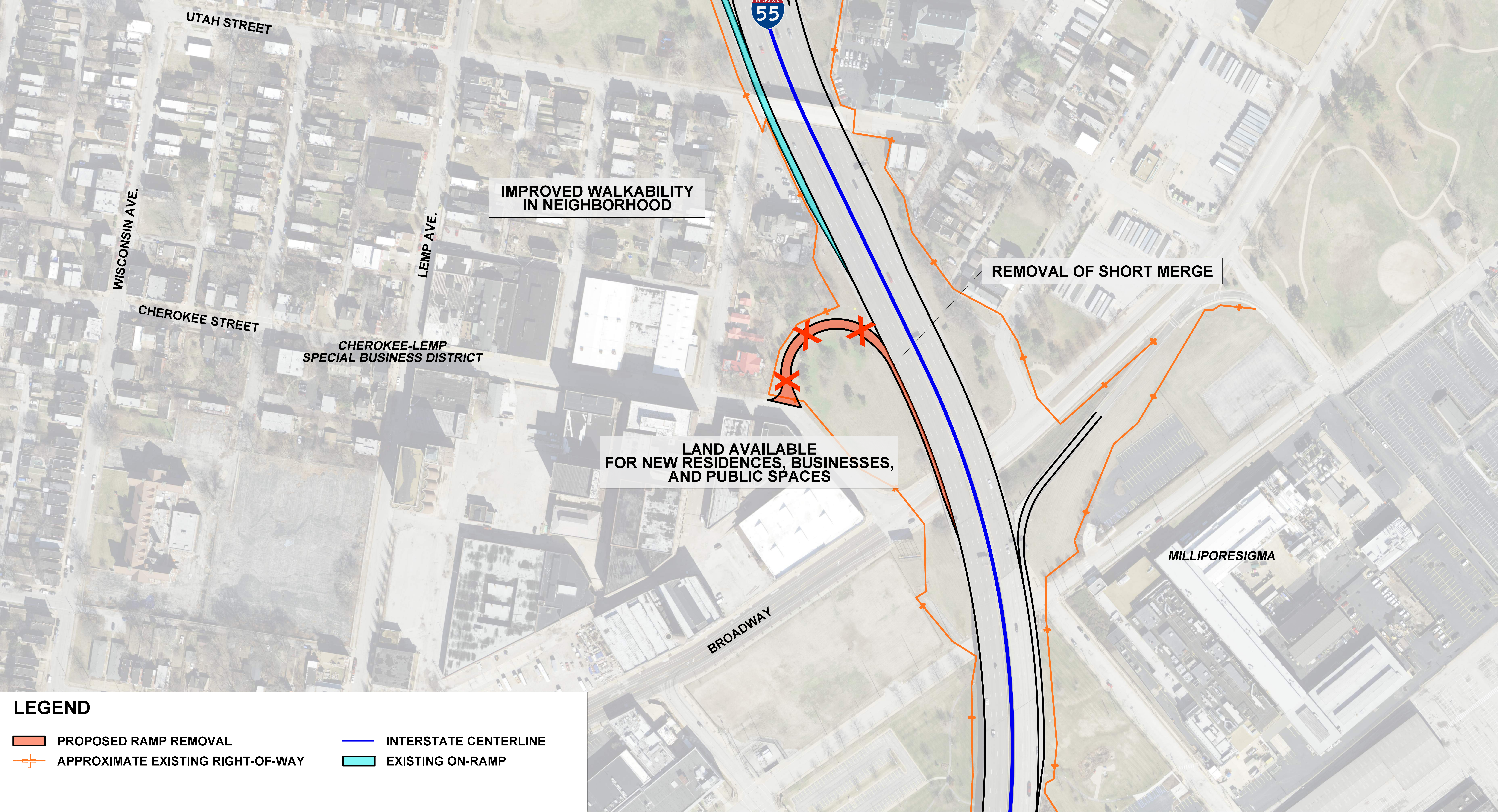


CHEROKEE ON-RAMP TO SOUTHBOUND I-55
PROPOSED REMOVAL

NEIGHBORHOOD IMPACTS



LEGEND

- PROPOSED RAMP REMOVAL
- APPROXIMATE EXISTING RIGHT-OF-WAY
- INTERSTATE CENTERLINE
- EXISTING ON-RAMP