

LETTER OF TRANSMITTAL

DATE: April 26, 2023

TO: All Prospective Bidders & MoDOT

FROM: Andy Macias, P.E.

RE: St. Joseph Regional Port Authority Barge Positioning Winch System – St. Joseph, Missouri
MoDOT Project #WCI23000141
Addendum No. 1

CONTENT: The following is Addendum No. 1 for the above reference project. **Please complete the confirmation portion from this addendum and fax it back to our office at (816) 364-6086 or scan and email to akatakis@snyder-associates.com** to ensure that you have received the addendum.

**CONFIRMATION OF RECEIPT
ADDENDUM NO. 1**

This is to confirm that we did receive Addendum No. 1 for the above
referenced project on this _____ day of _____, 2023.

Company: _____

By: _____

Addendum No. 1**St. Joseph Regional Port Authority Barge Positioning Winch System
St. Joseph, Missouri**

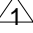
All Prospective Bidders:

The contract documents are hereby amended in the following particulars only. All other terms and conditions remain unchanged.

A. SPECIFICATIONS

1. Replace sheet 9 with 9A Electrical & Controls are now Alternate No. 1.

B. PLANS

1. Sheet C1.0 Index to sheets includes C3.3
Sheet C1.1 Electrical has been removed from Base Bid and is now Alternate No. 1
Sheet C2.0 See revision  which includes:
 - a. Electrical/control cabinet location
 - b. Approximate electrical/control wire route
 - c. Snatch block description and locationSheet C3.2 Removed battered piling & changed reinforcing steel from #6's to #8's
Sheet C3.3 Added electrical control schematic for reference only

The above interpretations and alterations are hereby made a part of the contract documents and supersede all other addenda or interpretations.

Issued this Twenty-sixth (26th) day of April 2023.

SNYDER & ASSOCIATES

Andy Macias, P.E.

ITEMIZED BID: The bidder should complete the following section in accordance with Sec 102.7. The bidder proposes to furnish all labor, materials, equipment, services, etc. required for the performance and completion of the work, as follows:

Base Bid

1	Mobilization	LS	1	\$_____	\$_____
2	HP 10x42 Piling	LF	560	\$_____	\$_____
3	Concrete Foundation	CY	24	\$_____	\$_____
4	Winch System including Pulley & Blocks	EA	2	\$_____	\$_____

Base Bid in words and figures: _____
 _____ (\$_____)

Alternate No. 1

1	Winch System Electrical & Control	LS	1	\$_____	\$_____
---	--------------------------------------	----	---	---------	---------

Alternate No. 1 in words and figures: _____
 _____ (\$_____)

TOTAL BID (BASE BID) in words and figures: _____
 _____ (\$_____)

TOTAL BID (BASE BID + ALTERNATE NO. 1) in words and figures: _____
 _____ (\$_____)

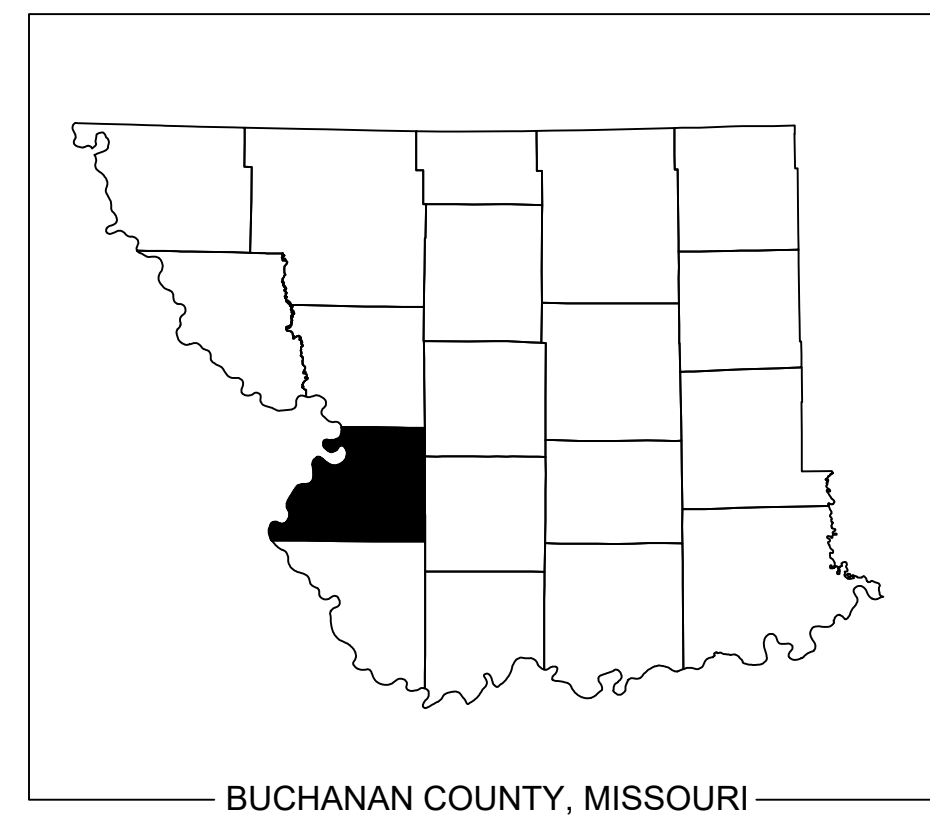
COMPANY: _____

SIGNED BY: _____

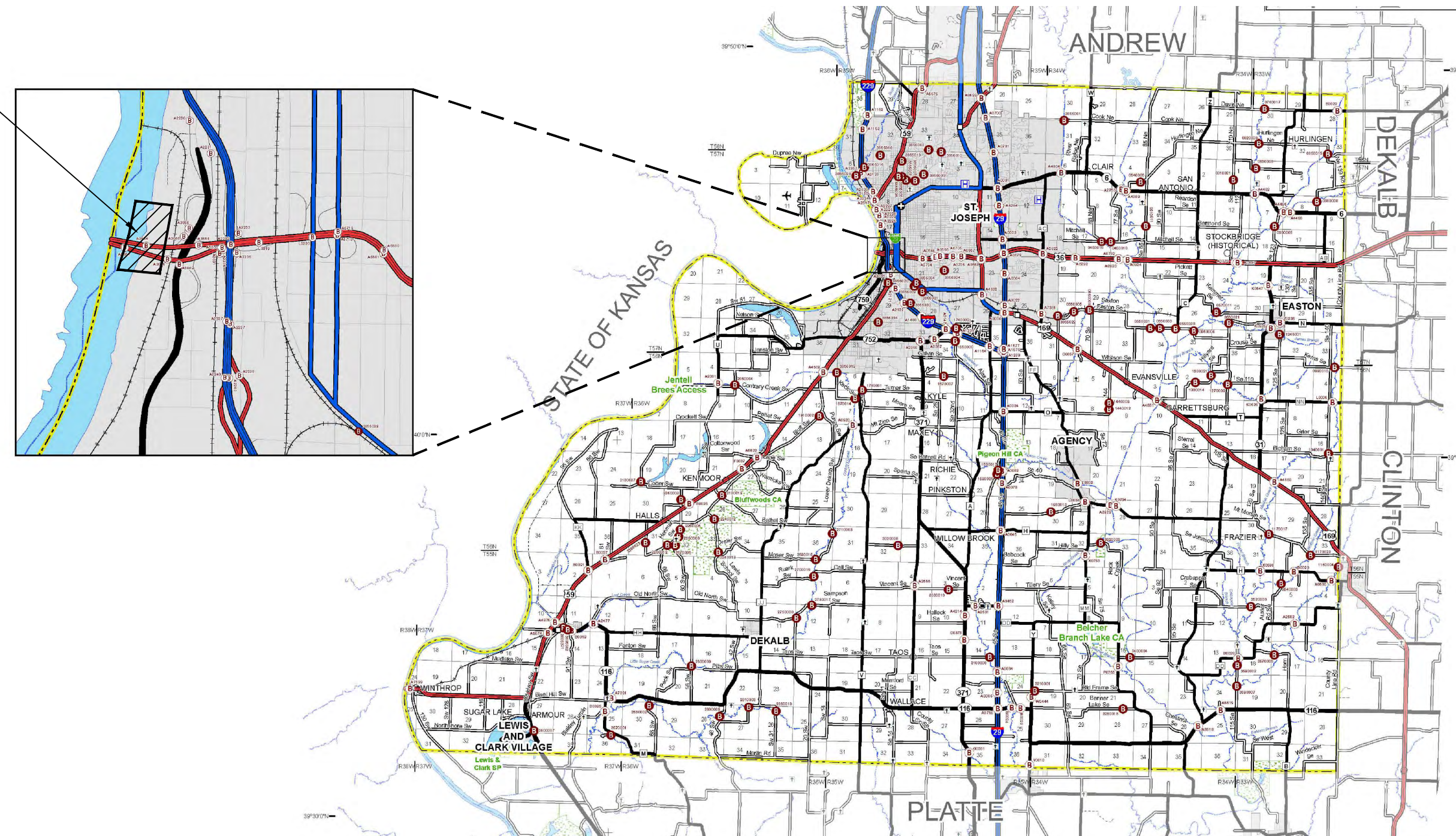
TITLE: _____

CONSTRUCTION PLANS FOR

BARGE POSITIONING WINCH SYSTEM
CITY OF ST. JOSEPH
BUCHANAN COUNTY, MO



PROJECT LOCATION



ST. JOSEPH, MISSOURI
LOCATION MAP
(N.T.S.)



UTILITY WARNING

THE UTILITIES SHOWN HAVE BEEN LOCATED FROM FIELD SURVEY INFORMATION AND/OR RECORDS OBTAINED. THE SURVEYOR MAKES NO GUARANTEE THAT THE UTILITIES SHOWN COMPRISE ALL SUCH UTILITIES IN THE AREA, EITHER IN SERVICE OR ABANDONED. THE SURVEYOR FURTHER DOES NOT WARRANT THAT THE UTILITIES SHOWN ARE IN THE EXACT LOCATION INDICATED.

ELECTRONIC TRANSMITTAL STATEMENT

THIS DOCUMENT MUST BE COMPARED TO THE ORIGINAL HARD COPY ISSUED AT THE DATE OF THE ORIGINAL SIGNATURE AND SEAL TO ENSURE THE ACCURACY OF THE INFORMATION AND TO FURTHER INSURE THAT NO CHANGES, ALTERATIONS OR MODIFICATIONS HAVE BEEN MADE. NO RELIANCE SHALL BE MADE ON A DOCUMENT TRANSMITTED BY COMPUTER OR OTHER ELECTRONIC MEANS UNLESS FIRST COMPARED TO THE ORIGINAL SEALED DOCUMENT.

INDEX TO SHEETS

- | | |
|------|---|
| C1.0 | TITLE SHEET |
| C1.1 | GENERAL NOTES & QUANTITIES |
| C2.0 | OVERALL SITE PLAN |
| C3.0 | WINCH DETAIL (FOR REFERENCE ONLY) |
| C3.1 | WINCH DETAIL (FOR REFERENCE ONLY) |
| C3.2 | WINCH FOUNDATION |
| C3.3 | ELECTRICAL SCHEMATIC (FOR REFERENCE ONLY) |

OWNER:
SAINT JOSEPH REGIONAL
PORT AUTHORITY
3003 FREDERICK AVE.
ST. JOSEPH, MO 64506
816.364.4110

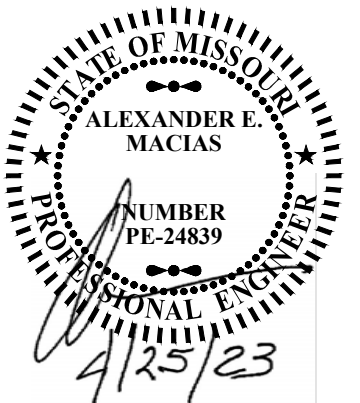
PLANNER / CIVIL ENGINEER:
SNYDER & ASSOCIATES, INC.
802 FRANCIS ST.
ST. JOSEPH, MO 64501
816.364.5222
CONTACT:
ANDY MACIAS, P.E.

ST. JOSEPH REGIONAL PORT AUTHORITY Date

I Hereby Certify this Engineering Document was prepared by me or under my direct personal supervision and that I'm a duly Registered Professional Engineer under the laws of the State of Missouri.

Alexander E. Macias, P.E. Date
Reg. No. E-24839

Sheets covered by this Certification:



ST. JOSEPH REGIONAL PORT AUTHORITY

ST. JOSEPH, BUCHANAN CTY, MO

SNYDER & ASSOCIATES
ENGINEERS & PLANNERS, INC.

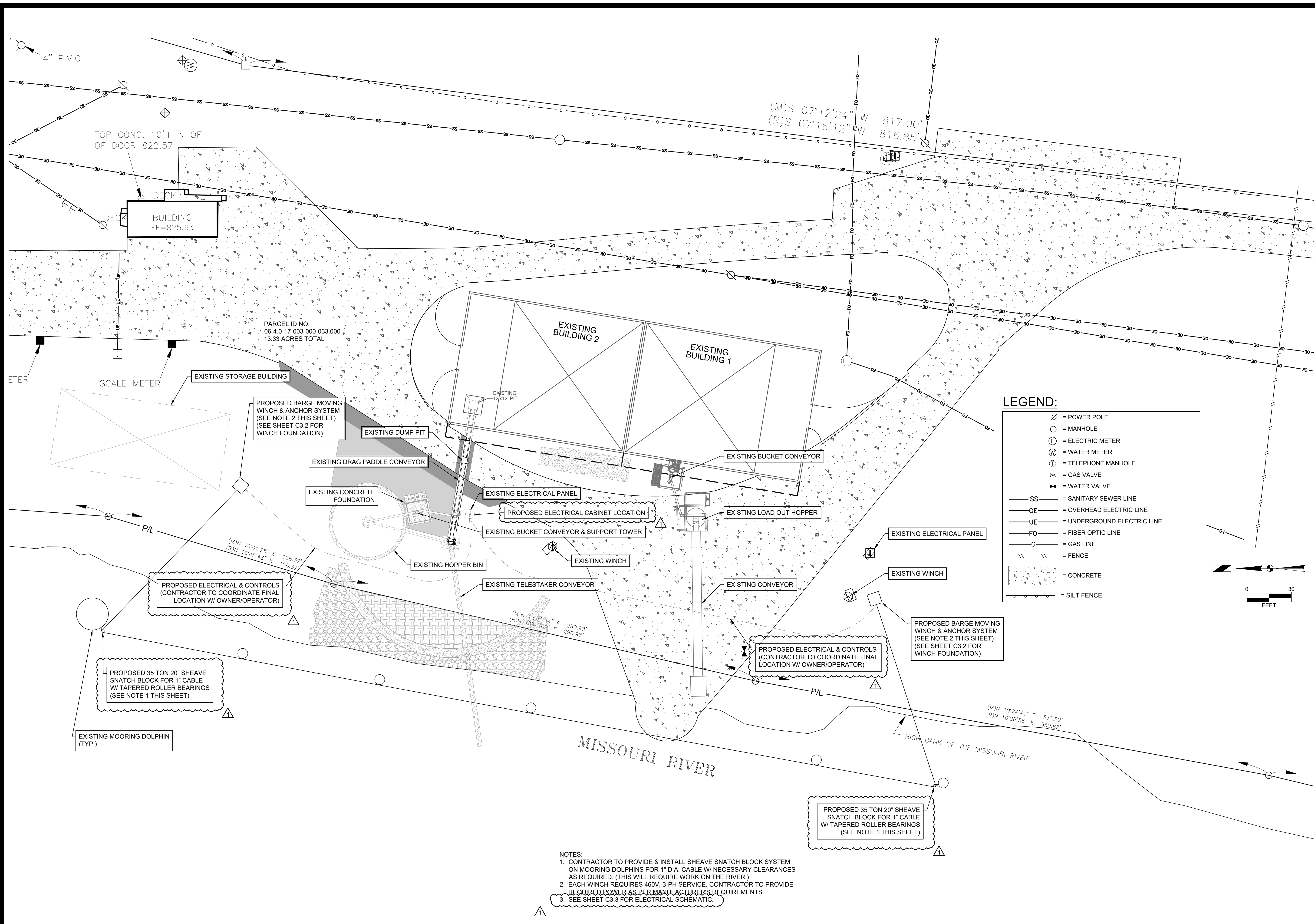


Project No: 123.0486.11

Sheet C1.0

Sheet C1.0

V:\Projects\2021\1230486 - PLAN OVERALL.dwg:BRAN.NICHOLAS: OVERALL SITE PLAN 2/23/24:09:22:21 PM: ANS: FULL BLEED: D: 0.20 X 0.54 (0 INCHES)



- NOTES:
1. CONTRACTOR TO PROVIDE & INSTALL SHEAVE SNATCH BLOCK SYSTEM ON MOORING DOLPHINS FOR 1" DIA. CABLE W/ NECESSARY CLEARANCES AS REQUIRED. (THIS WILL REQUIRE WORK ON THE RIVER.)
 2. EACH WINCH REQUIRES 460V, 3-PH SERVICE. CONTRACTOR TO PROVIDE REQUIRED POWER AS PER MANUFACTURER'S REQUIREMENTS.
 3. SEE SHEET C3.3 FOR ELECTRICAL SCHEMATIC.



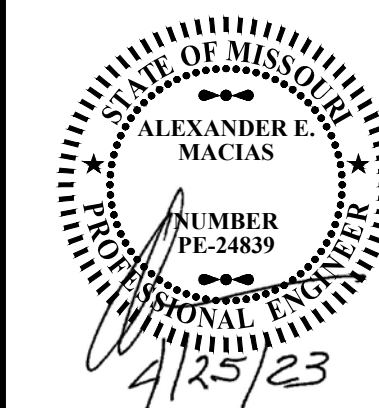
Project No: 123.0486.11

Sheet C2.0

ST. JOSEPH REGIONAL PORT AUTHORITY
OVERALL SITE PLAN
ST. JOSEPH, BUCHANAN CTY., MO

SNYDER & ASSOCIATES
ENGINEERS & PLANNERS, INC.

802 FRANCIS STREET
ST. JOSEPH, MISSOURI 64501
816-364-5222 | www.snyder-associates.com

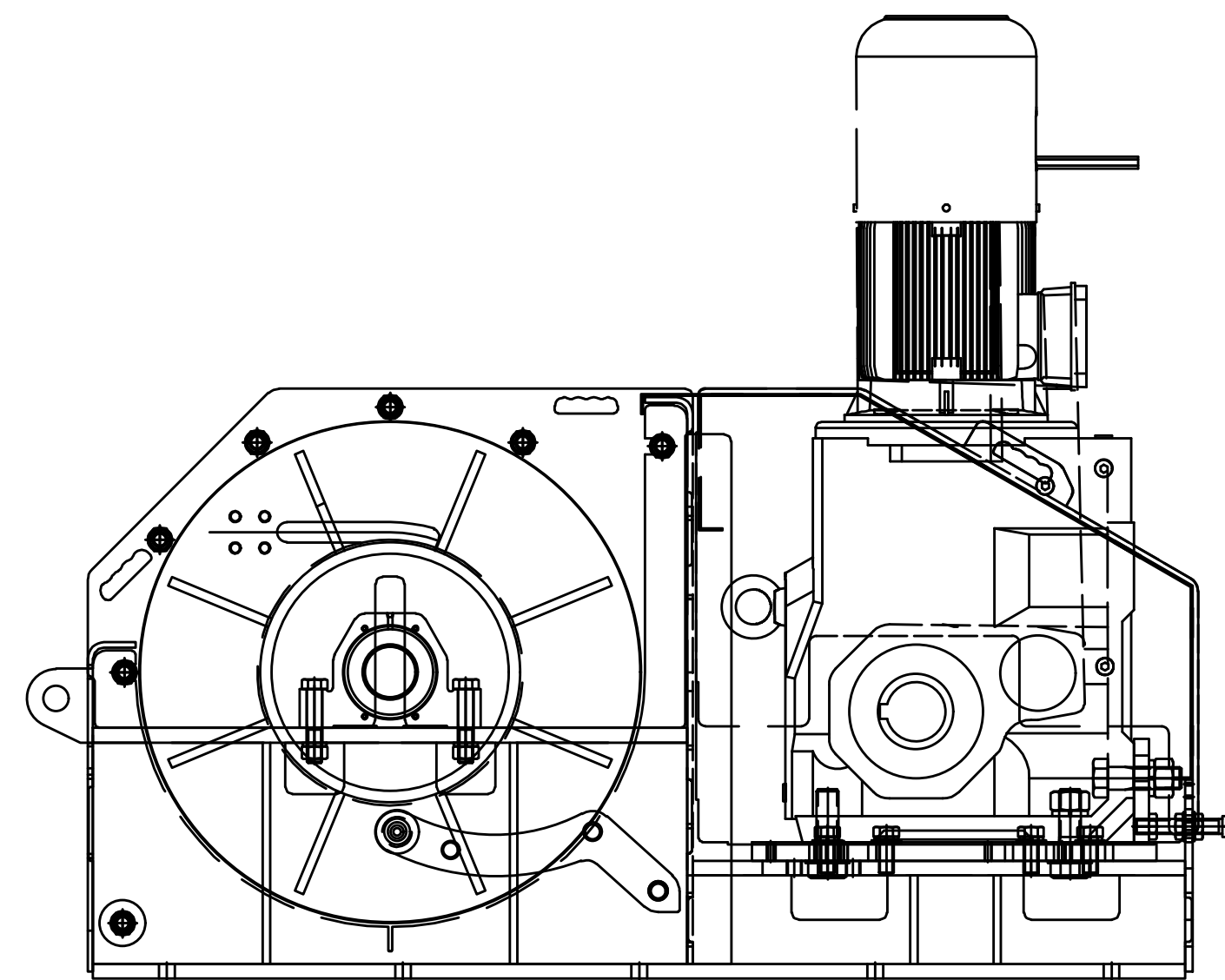
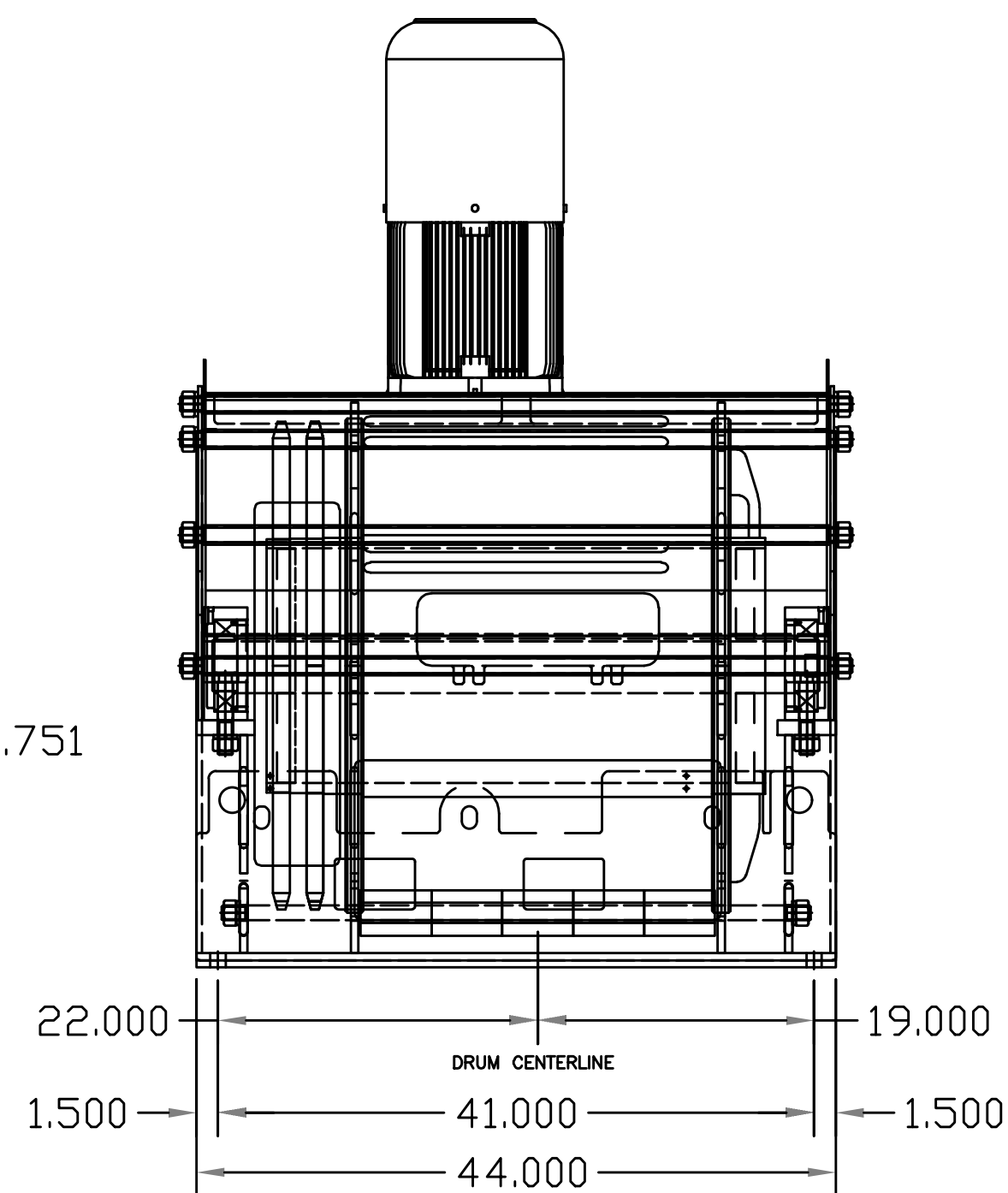


MARK	REVISION	DATE	BY
1	ISSUED FOR ADDENDUM 1	04-25-23	AM

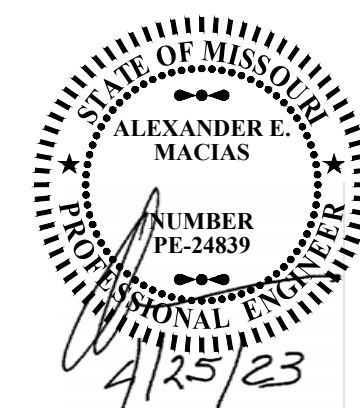
Engineer: AM	Checked By: JR	Date: 04-12-2023
Technician: BN	T-R-S: 57N-35W-17	

Snyder & Associates Engineers & Planners, Inc.
Missouri State Certificate of Authority #200608544

Sheet C2.0



NOTES:
1. WINCH DETAIL FOR REFERENCE ONLY.
2. INCLUDE 700' 1" CABLE FOR EACH WINCH.

[illegible]

ST. JOSEPH REGIONAL PORT AUTHORITY

WINCH DETAIL

SNYDER & ASSOCIATES
ENGINEERS & PLANNERS, INC.

802 FRANCIS STREET
ST. JOSEPH, MISSOURI 64501

ST. JOSEPH, MISSOURI 64501
816-364-5222 | www.snyder-associates.com

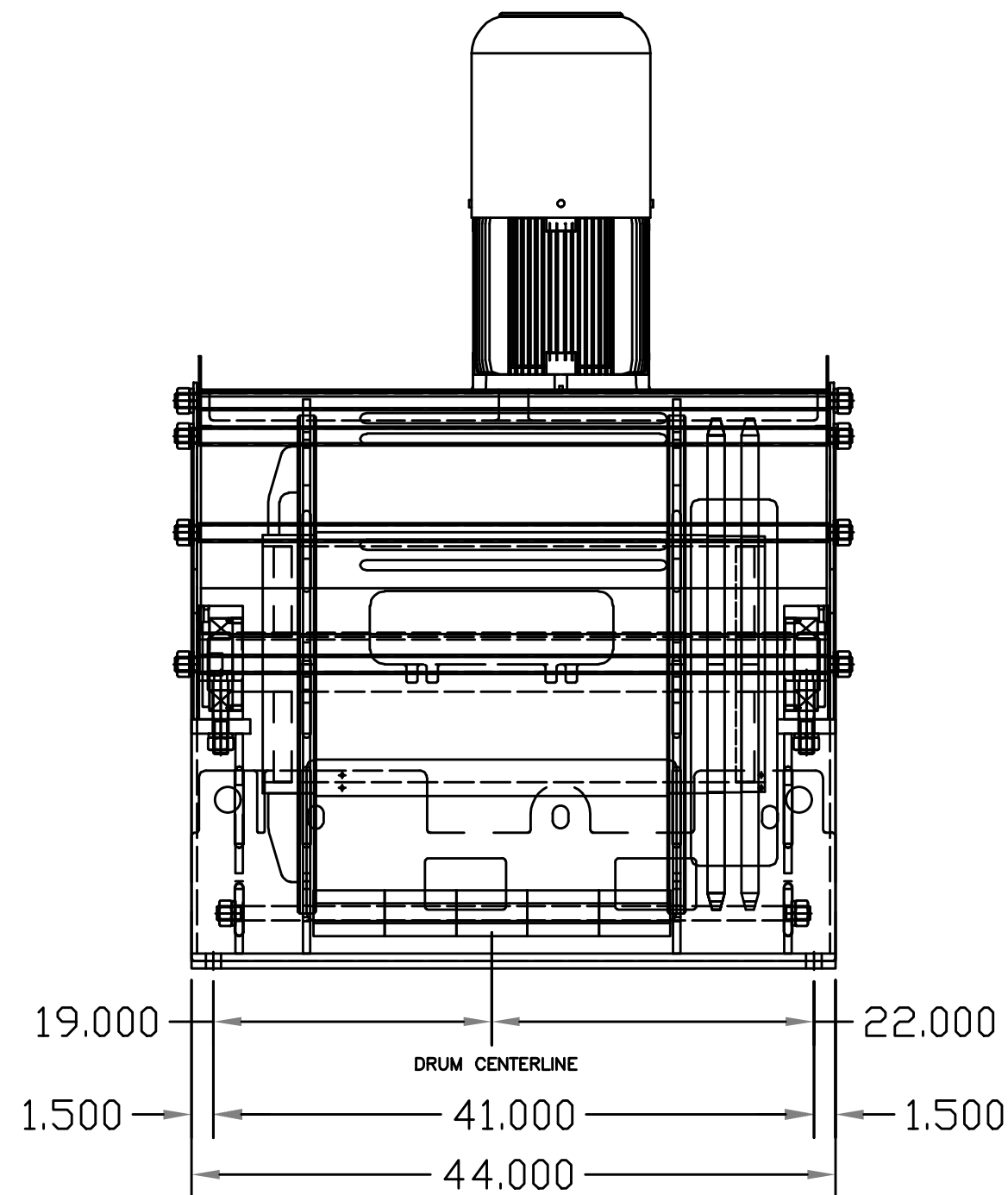
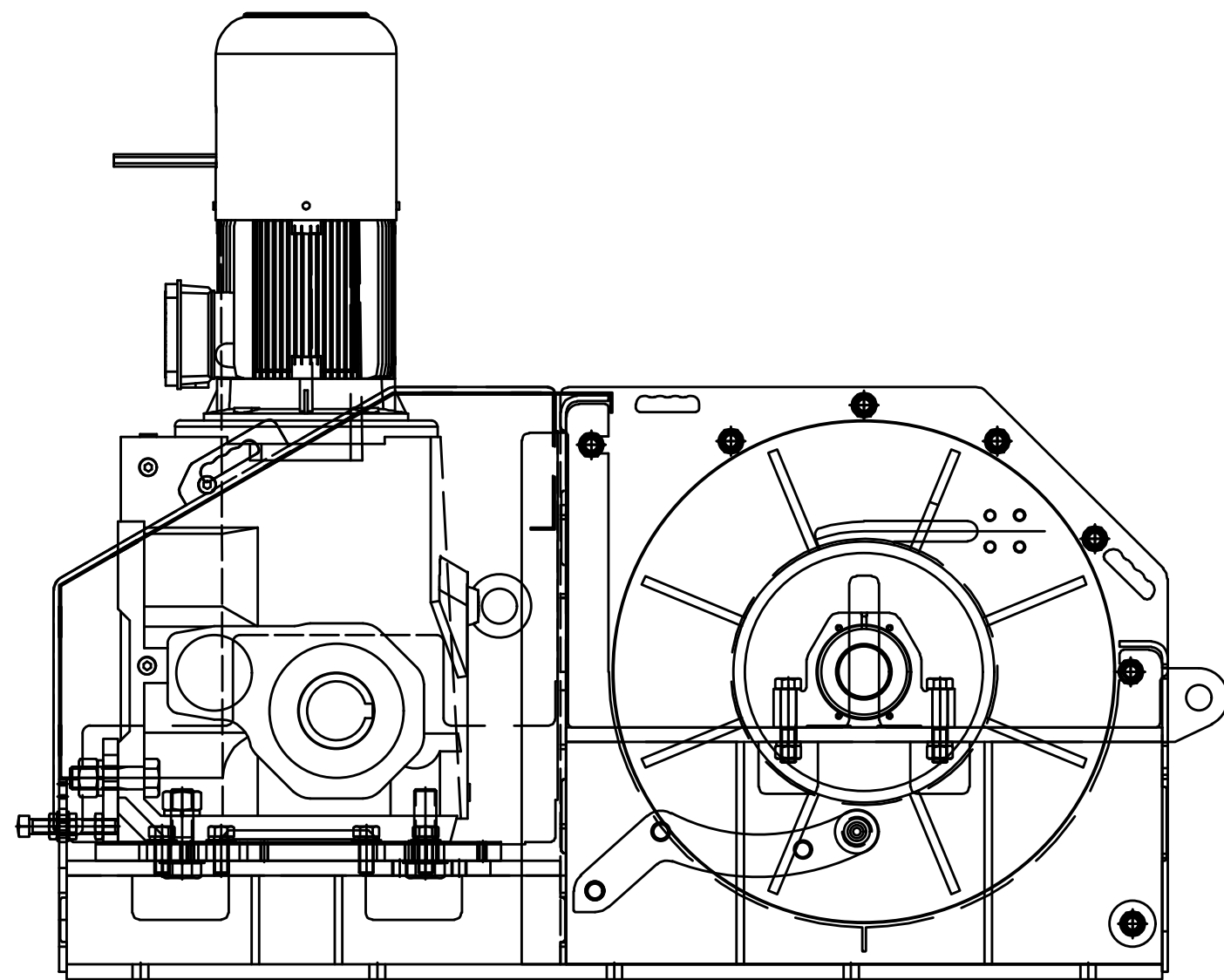
Sheet C3.0



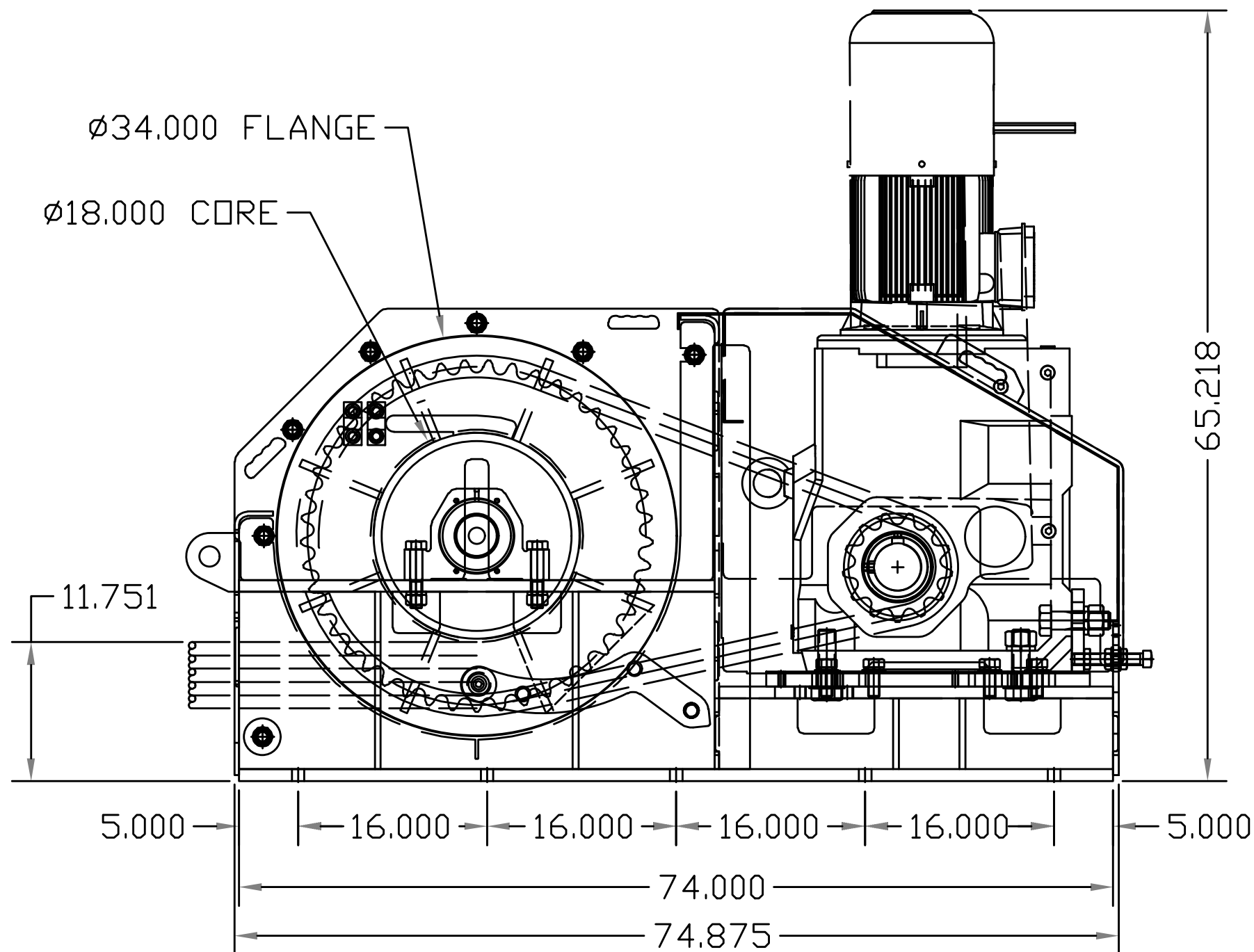
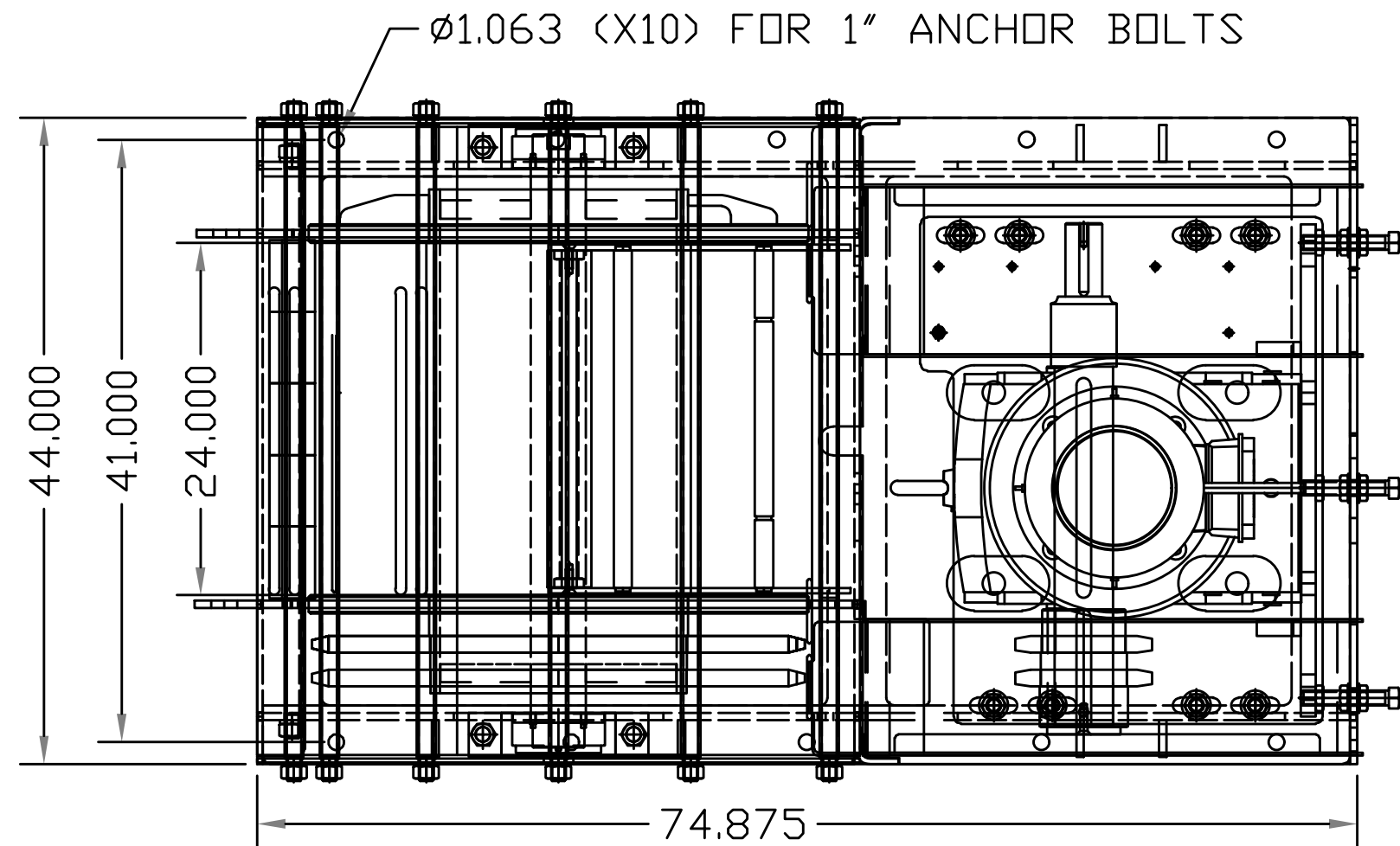
Project No: 123.0486.11

Sheet C3.0

V:\Projects\2023\1230486.11\CADD\SP - 1230486.DWG DTLS.dwg BRIAN NICHOLAS, WINCH DETAIL 2023/04/26 2:29 PM ANSI FULL BLEED 0 (22.00 X 34.00 INCHES)

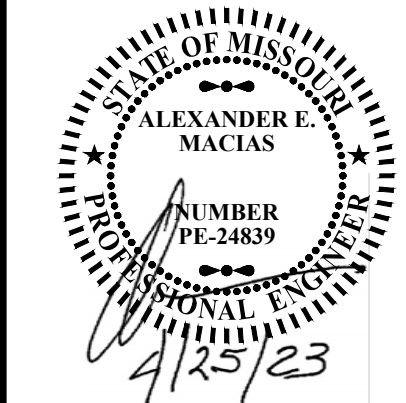


- NOTES:
1. WINCH DETAIL FOR REFERENCE ONLY.
2. INCLUDE 700' 1" CABLE FOR EACH WINCH.



ST. JOSEPH REGIONAL PORT AUTHORITY
WINCH DETAIL
ST. JOSEPH, BUCHANAN CTY, MO
SNYDER & ASSOCIATES
ENGINEERS & PLANNERS, INC.
802 FRANCIS STREET
ST. JOSEPH, MISSOURI 64501
816-364-5222 | www.snyder-associates.com

Project No: 123.0486.11
Sheet C3.1

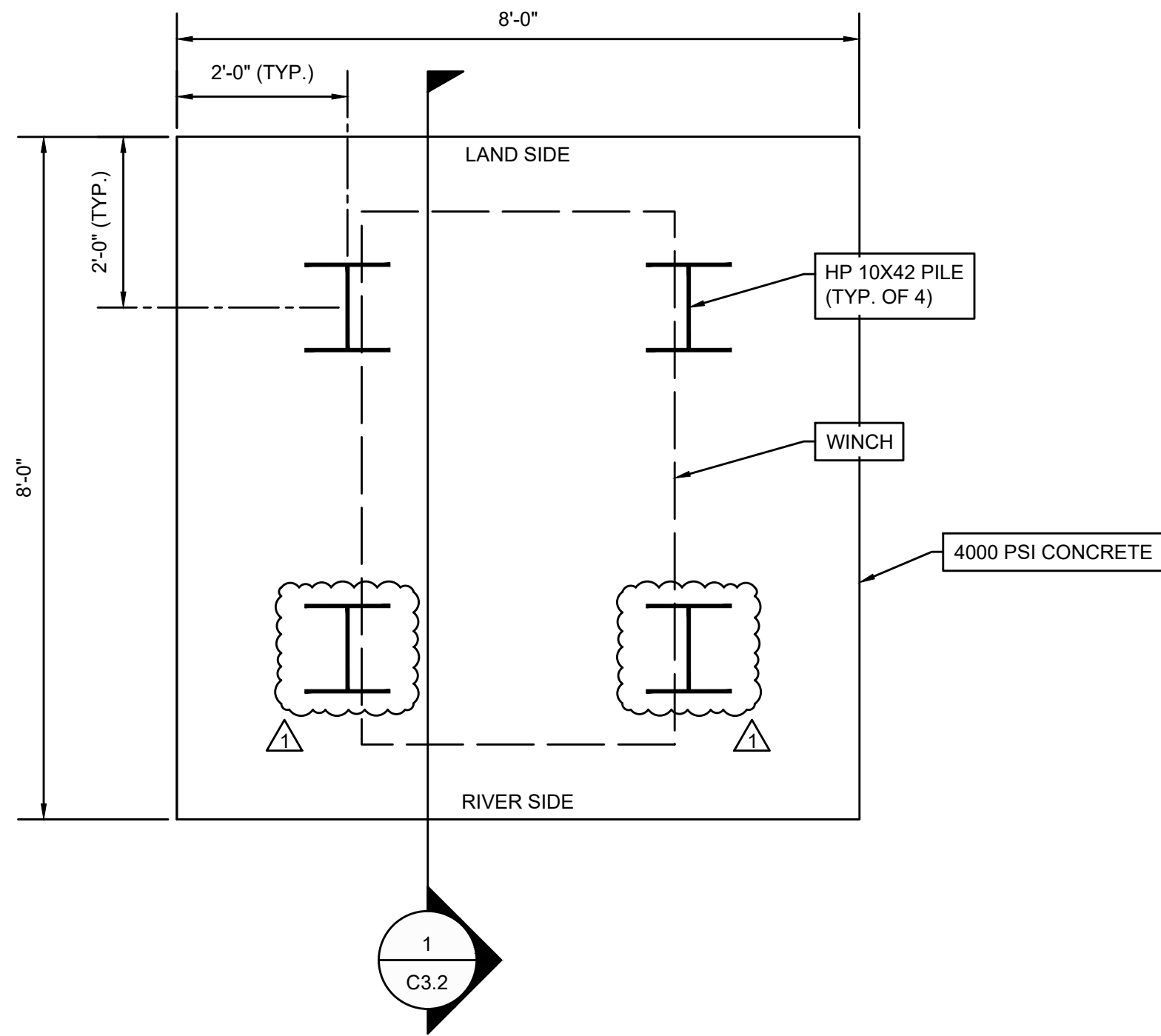


1	ISSUED FOR ADDENDUM 1	04-25-23	AM	BY
MARK	REVISION	DATE	DATE	BY
Engineer: AM	Checked By: JR	Scale: 1" = NTS		
Technician: BN	Date: 04-12-2023	T-R-S: 57N-35W-17		

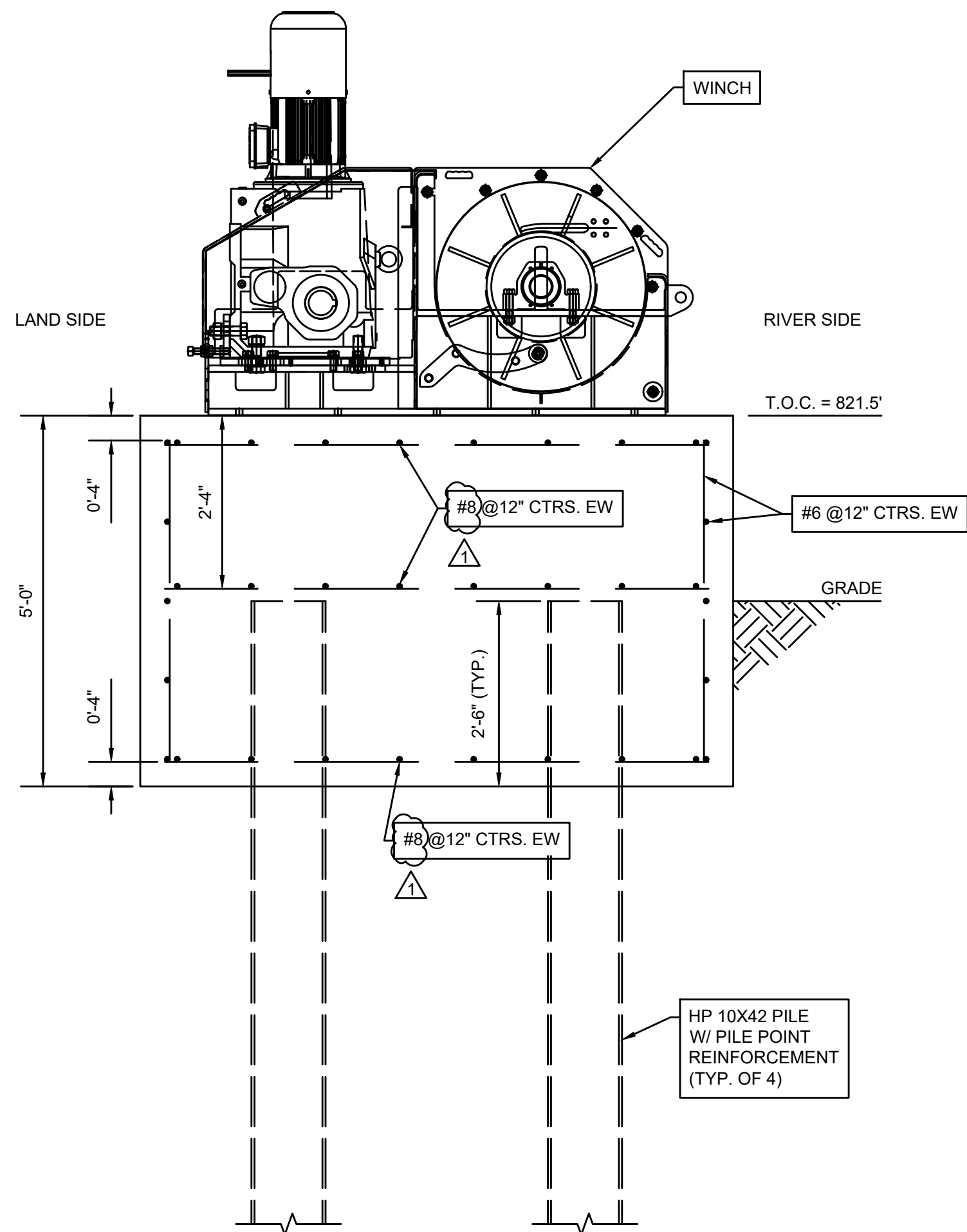
Snyder & Associates Engineers & Planners, Inc.
Missouri State Certificate of Authority #200608544

Sheet C3.1

V:\Projects\2023\1230486_11\CADD\SP - 1230486 - DTLS.dwg, BRIAN NICHOLAS, WINCH FOUNDATION, 2023/04/26, 2:22 PM, ANSI FULL BLEED D (22.0 X 34.0 INCHES)

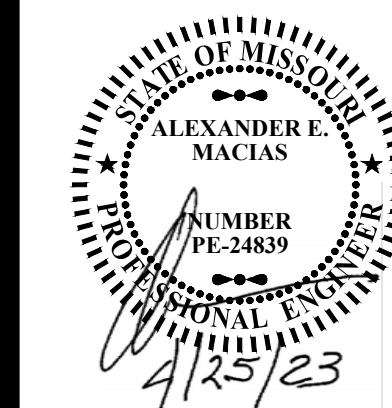


WINCH FOUNDATION PLAN



WINCH FOUNDATION SECTION-1

1	ISSUED FOR ADDENDUM 1	04-25-23	AM
MARK	REVISION	DATE	BY
Engineer: AM	Checked By: JR	Scale: 1" = NTS	
Technician: BN	Date: 04-12-2023	T-R-S: 57N-35W-17	
Snyder & Associates Engineers & Planners, Inc. Missouri State Certificate of Authority #200608544			
Sheet C3.2			

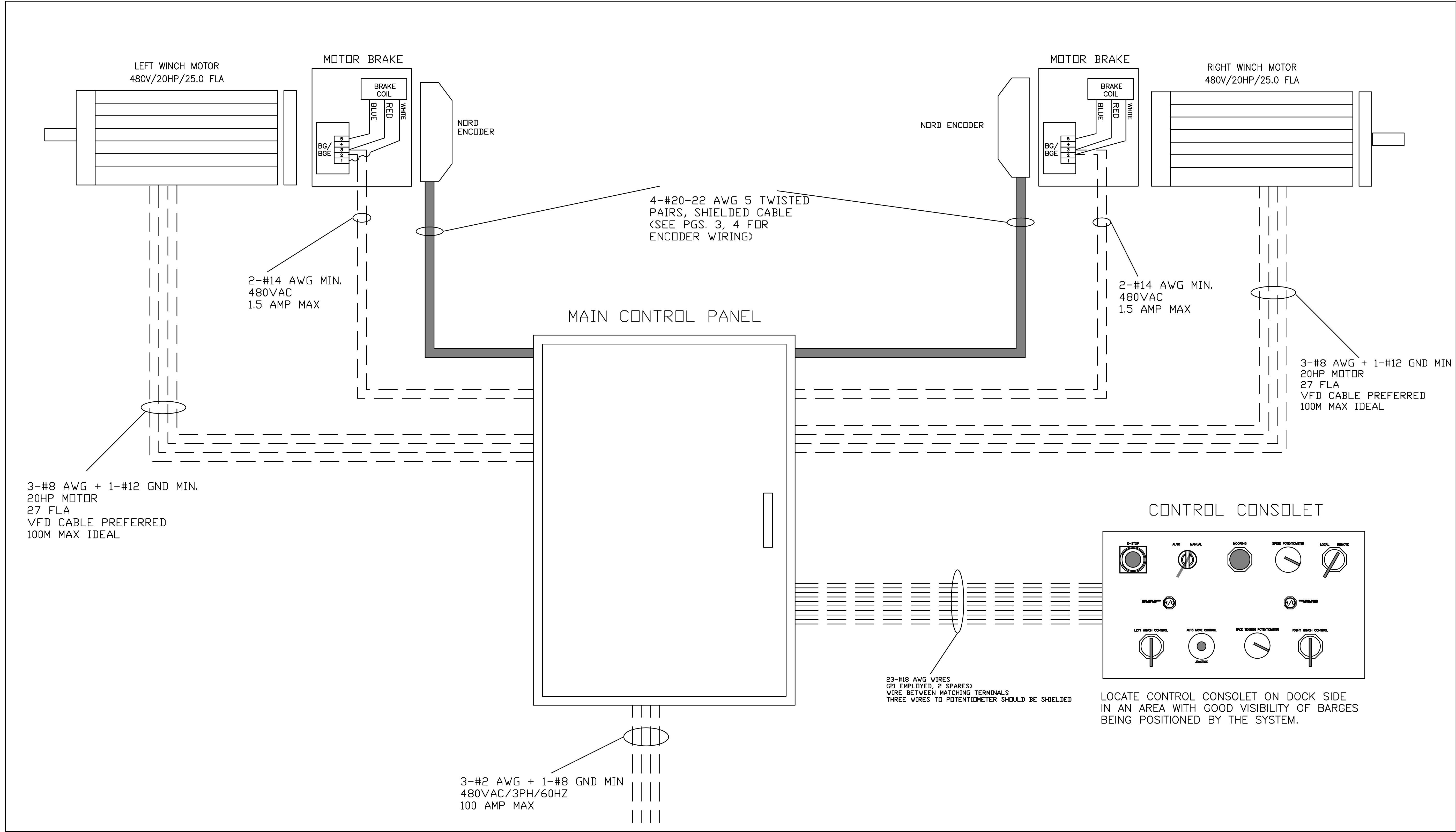


ST. JOSEPH REGIONAL PORT AUTHORITY
WINCH FOUNDATION
ST. JOSEPH, BUCHANAN CTY., MO
SNYDER & ASSOCIATES
ENGINEERS & PLANNERS, INC.
802 FRANCOIS STREET
ST. JOSEPH, MISSOURI 64501
816-364-5222 | www.snyder-associates.com



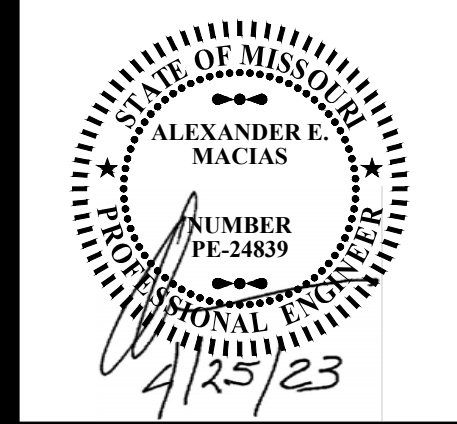
Project No: 123.0486.11
Sheet C3.2

V:\Projects\2023\123.0486.11\CADD\SP - ELECTRICAL SCHEMATIC 20230426 2:22 PM ANSI FULL BLEED D (22.00 X 34.00 INCHES)



NOTES:
1. ELECTRICAL SCHEMATIC FOR REFERENCE ONLY.

ISSUED FOR ADDENDUM 1	DATE	BY
1	04-25-23	AM
REVISION	DATE	BY
Engineer: AM	Checked By: JR	Scale: 1" = NTS
Technician: BN	Date: 04-12-2023	T-R-S: 57N-35W-17
Snyder & Associates Engineers & Planners, Inc. Missouri State Certificate of Authority #200608544		



ST. JOSEPH REGIONAL PORT AUTHORITY

ELECTRICAL SCHEMATIC

ST. JOSEPH, BUCHANAN CTY., MO

SNYDER & ASSOCIATES
ENGINEERS & PLANNERS, INC.

802 FRANCIS STREET
ST. JOSEPH, MISSOURI 64501
816-364-5222 | www.snyder-associates.com

