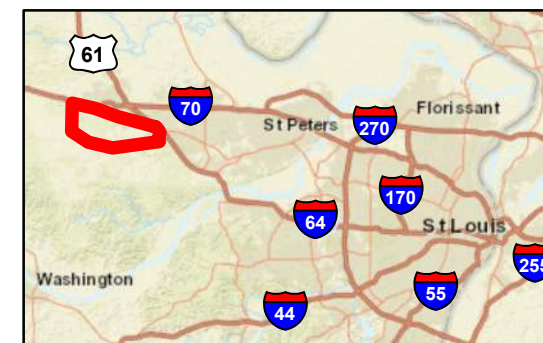
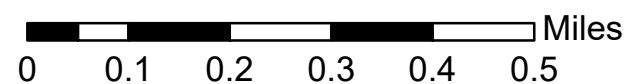


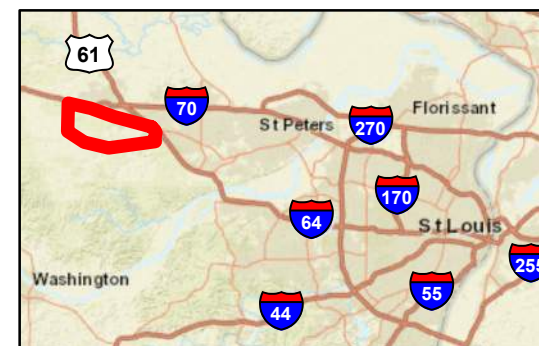
Legend

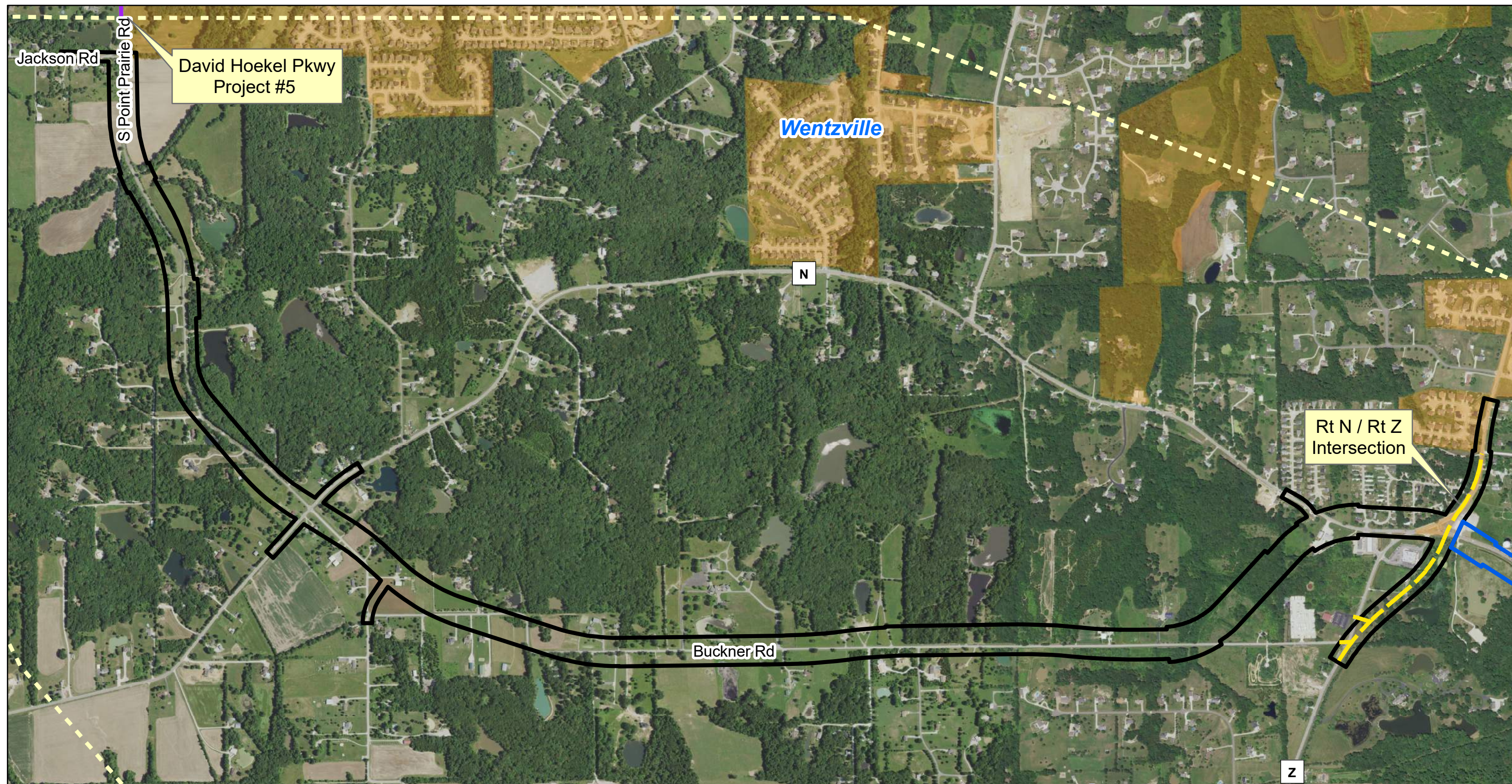
- Future David Hoekel Parkway
- Future St. Charles County Projects
- - - Study Area
- PEL Section West
- PEL Section Center
- PEL Section East



Exhibit 1 (PEL Section East) Future Development Hopewell Road to I-64 Route N EA/PEL





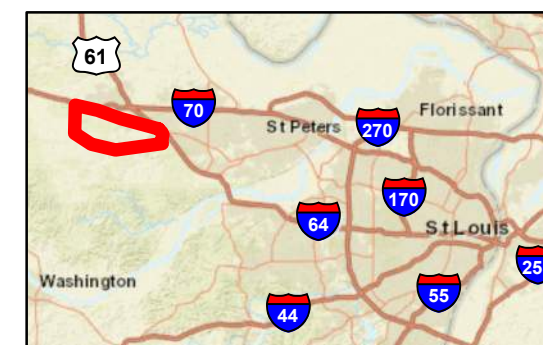


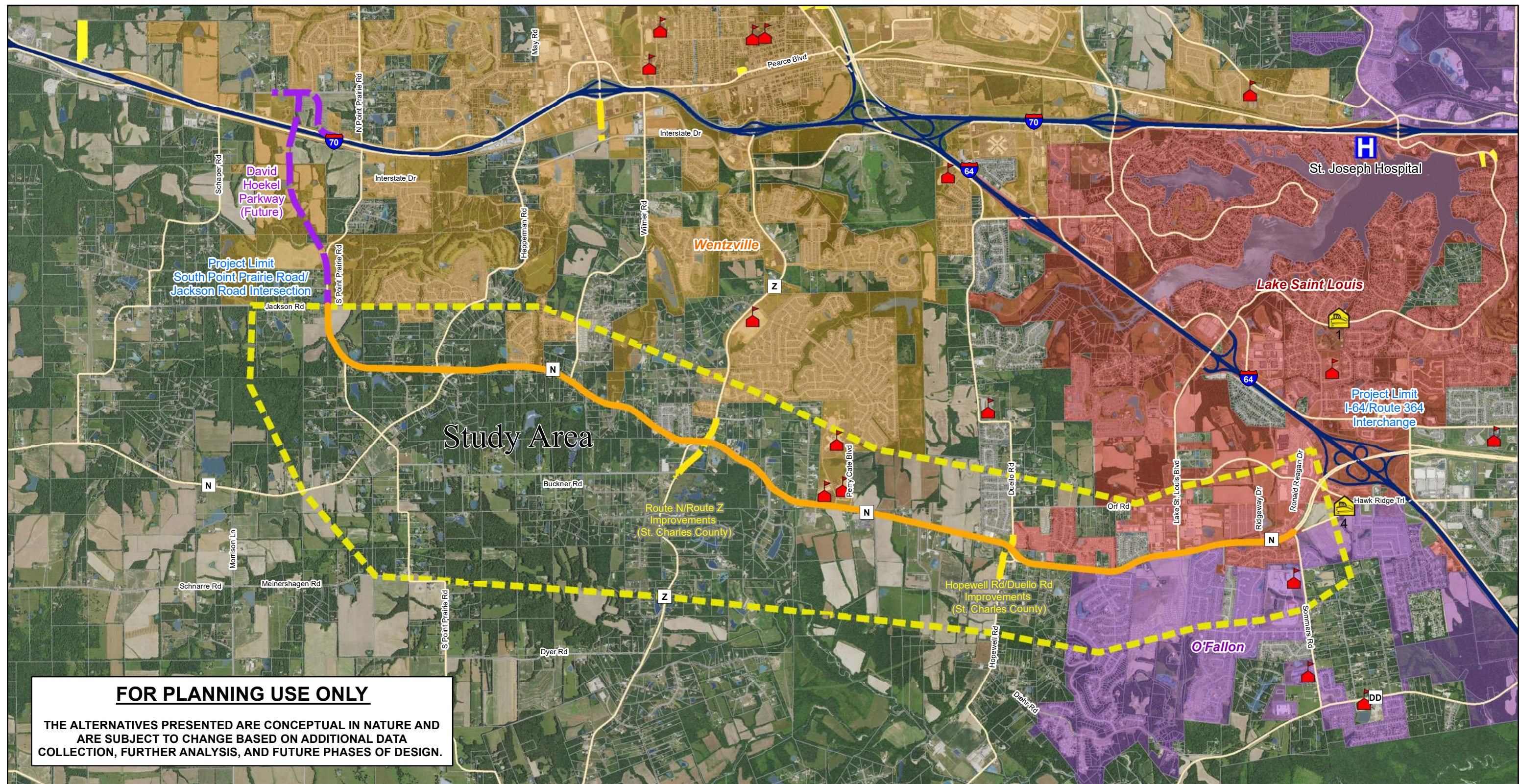
Legend

- Future David Hoekel Parkway
- Future St. Charles County Projects
- Study Area
- PEL Section West
- PEL Section Center
- PEL Section East



Exhibit 1 (PEL Section West) Future Development Jackson Road to Route Z Route N EA/PEL





Legend







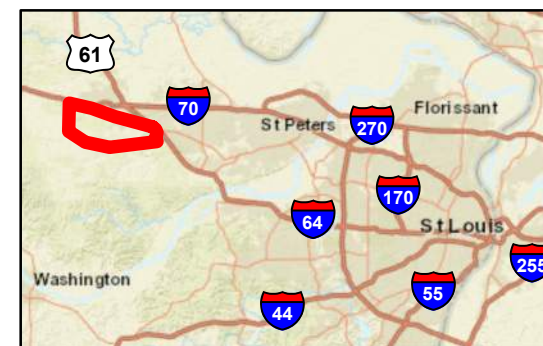
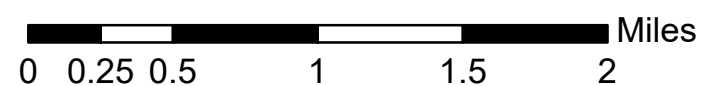
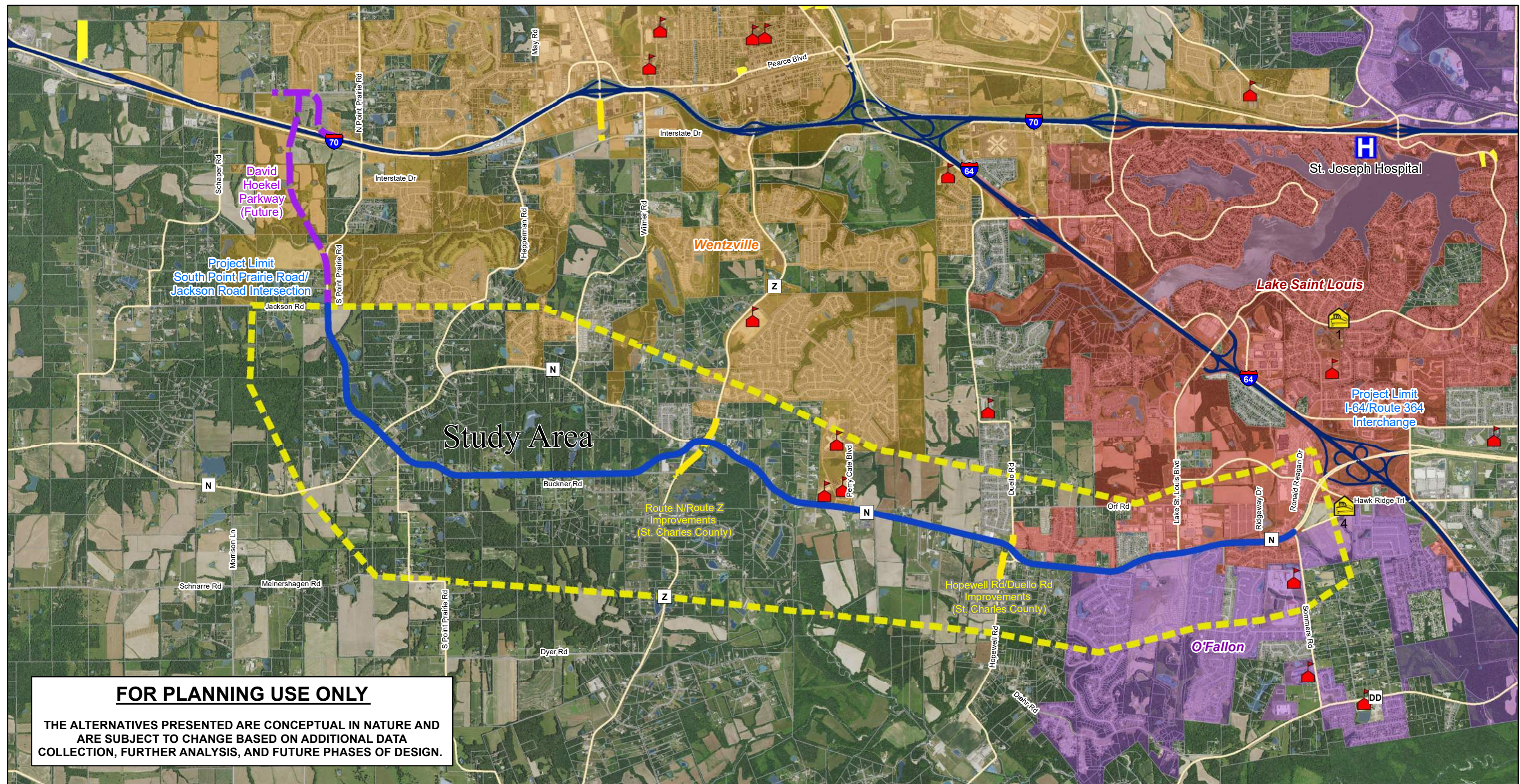
-  Fire Department
-  Hospitals
-  Schools
-  Places of Worship
-  Study Area
-  Improve Existing Conceptual Alternative



Exhibit 2 Conceptual Alternative - Improve Existing Route N EA/PEL



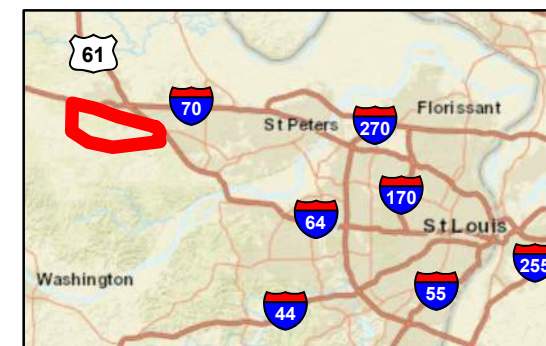
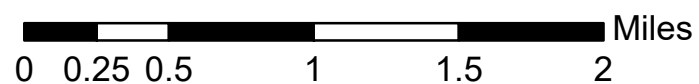


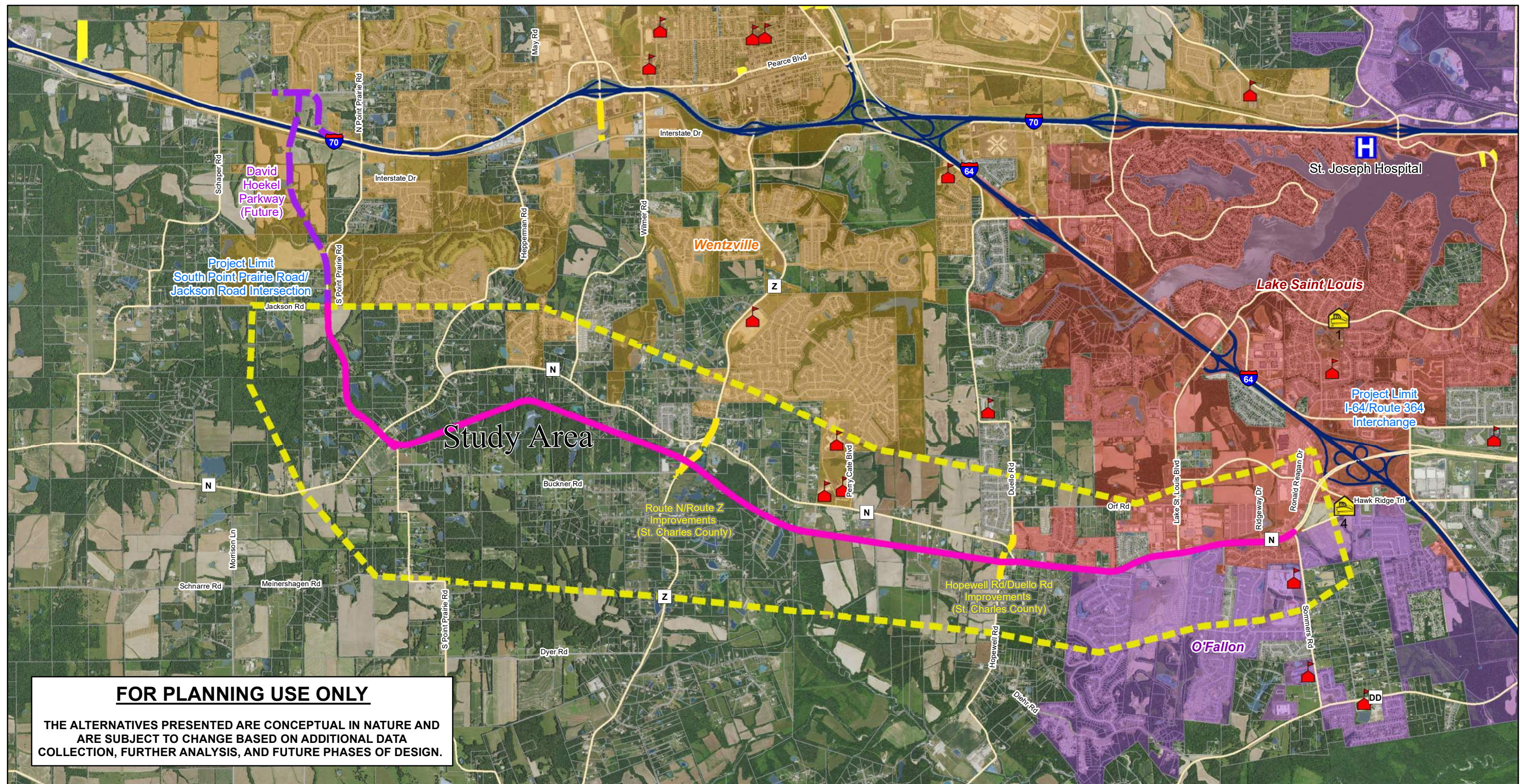
Legend

- Fire Department
- Hospitals
- Schools
- Places of Worship
- Study Area
- Buckner Road Conceptual Alternative



Exhibit 3 Conceptual Alternative - Buckner Road Route N EA/PEL





Legend







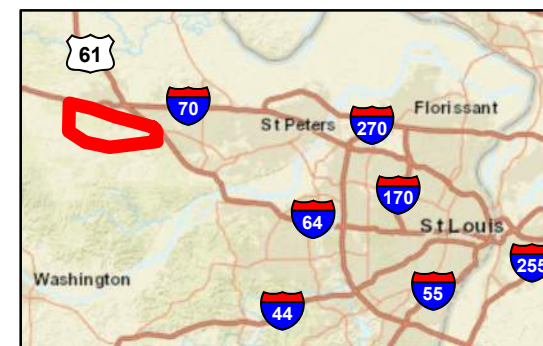
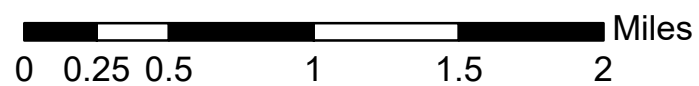
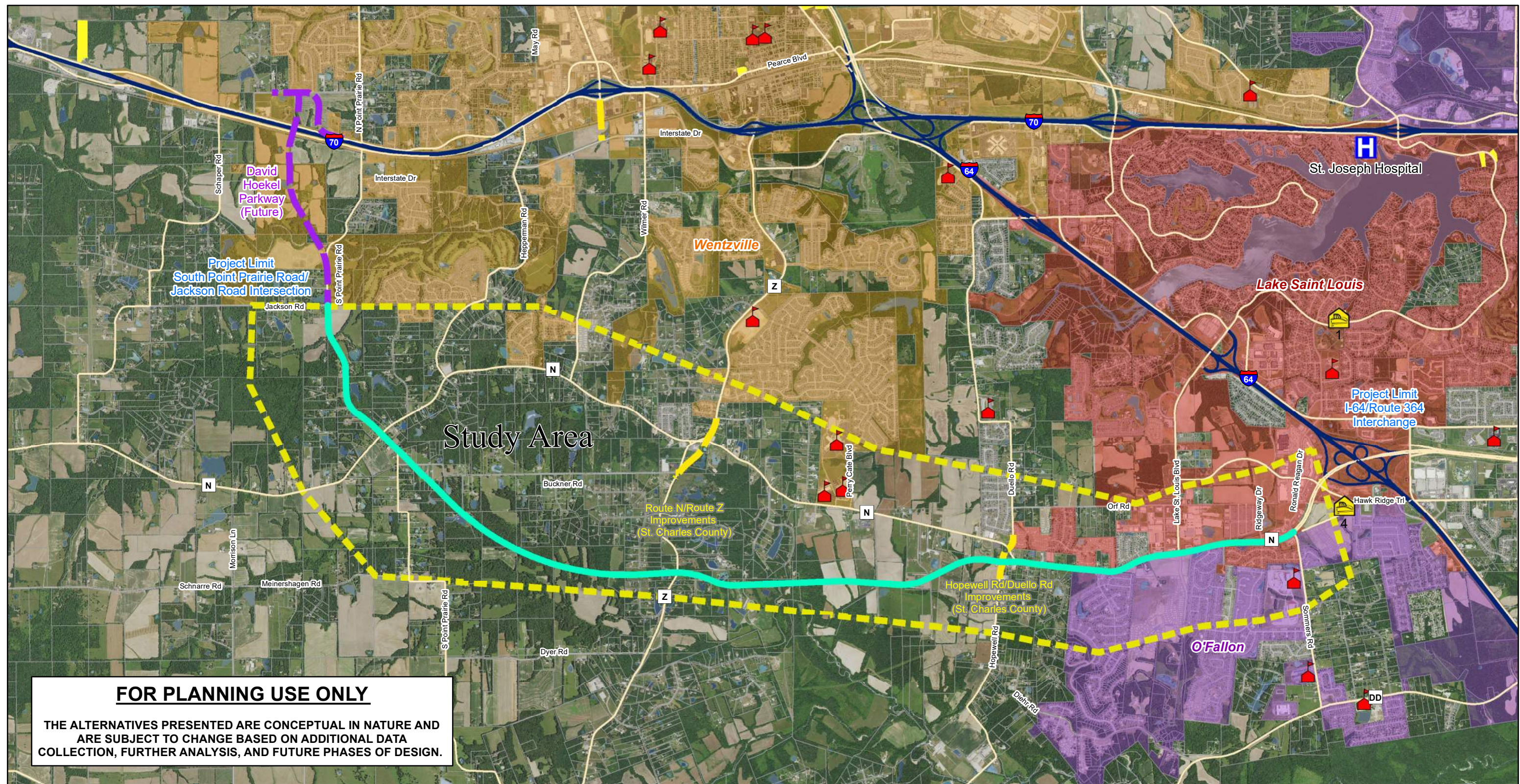
-  Fire Department
-  Hospitals
-  Schools
-  Places of Worship
-  Study Area
-  Near South Conceptual Alternative



Exhibit 4 Conceptual Alternative - Near South Route N EA/PEL





Legend







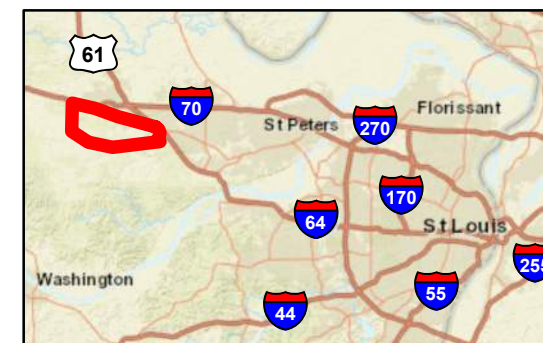
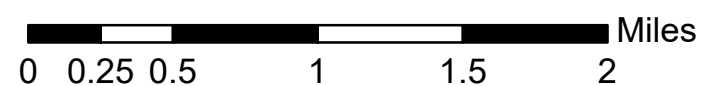
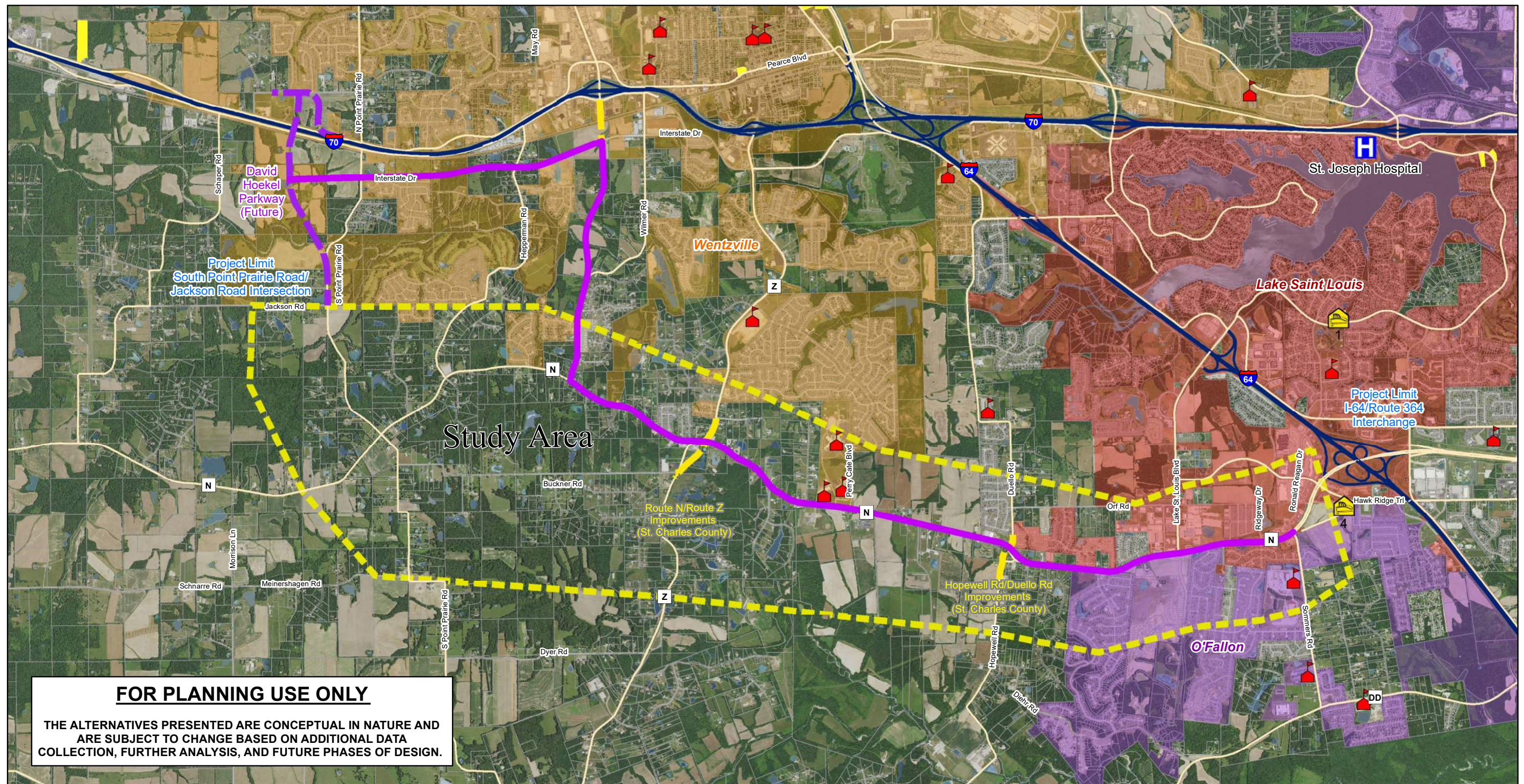
-  Fire Department
-  Hospitals
-  Schools
-  Places of Worship
-  Study Area
-  Far South Conceptual Alternative



Exhibit 5 Conceptual Alternative - Far South Route N EA/PEL





Legend







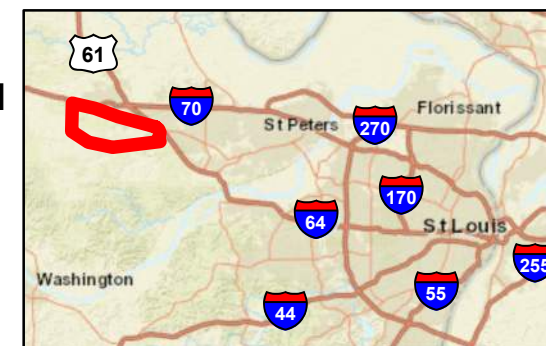
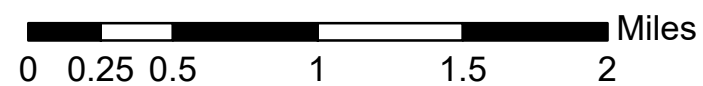
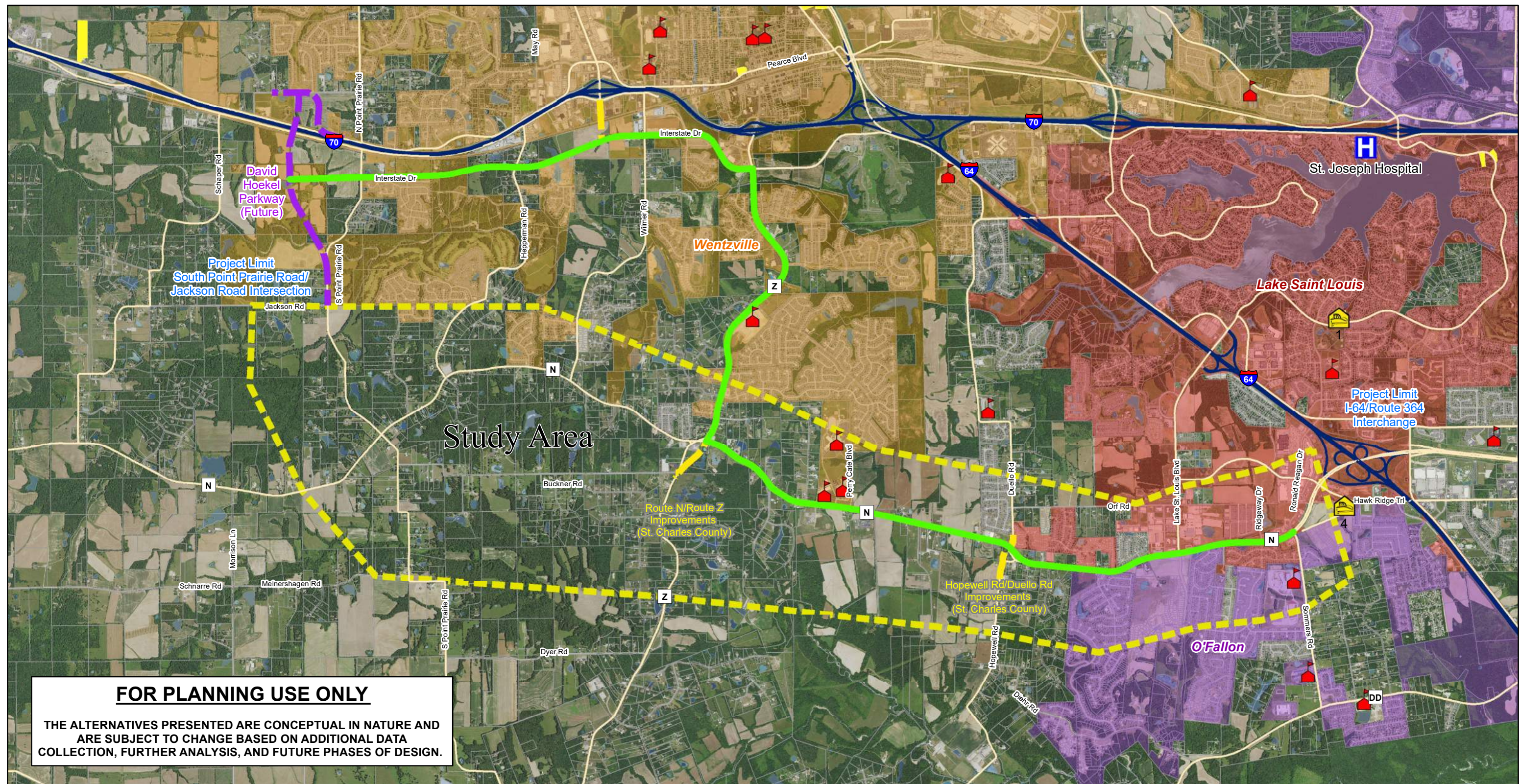
-  Fire Department
  Interstate Drive/Wilmer Road
Conceptual Alternative
-  Hospitals
-  Schools
-  Places of Worship
-  Study Area

Exhibit 6
Conceptual Alternative - Interstate Drive / Wilmer Road
Route N EA/PEL





Legend

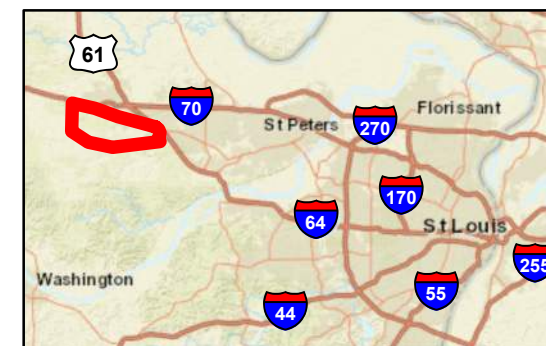
- Fire Department
- Hospitals
- Schools
- Places of Worship
- Study Area

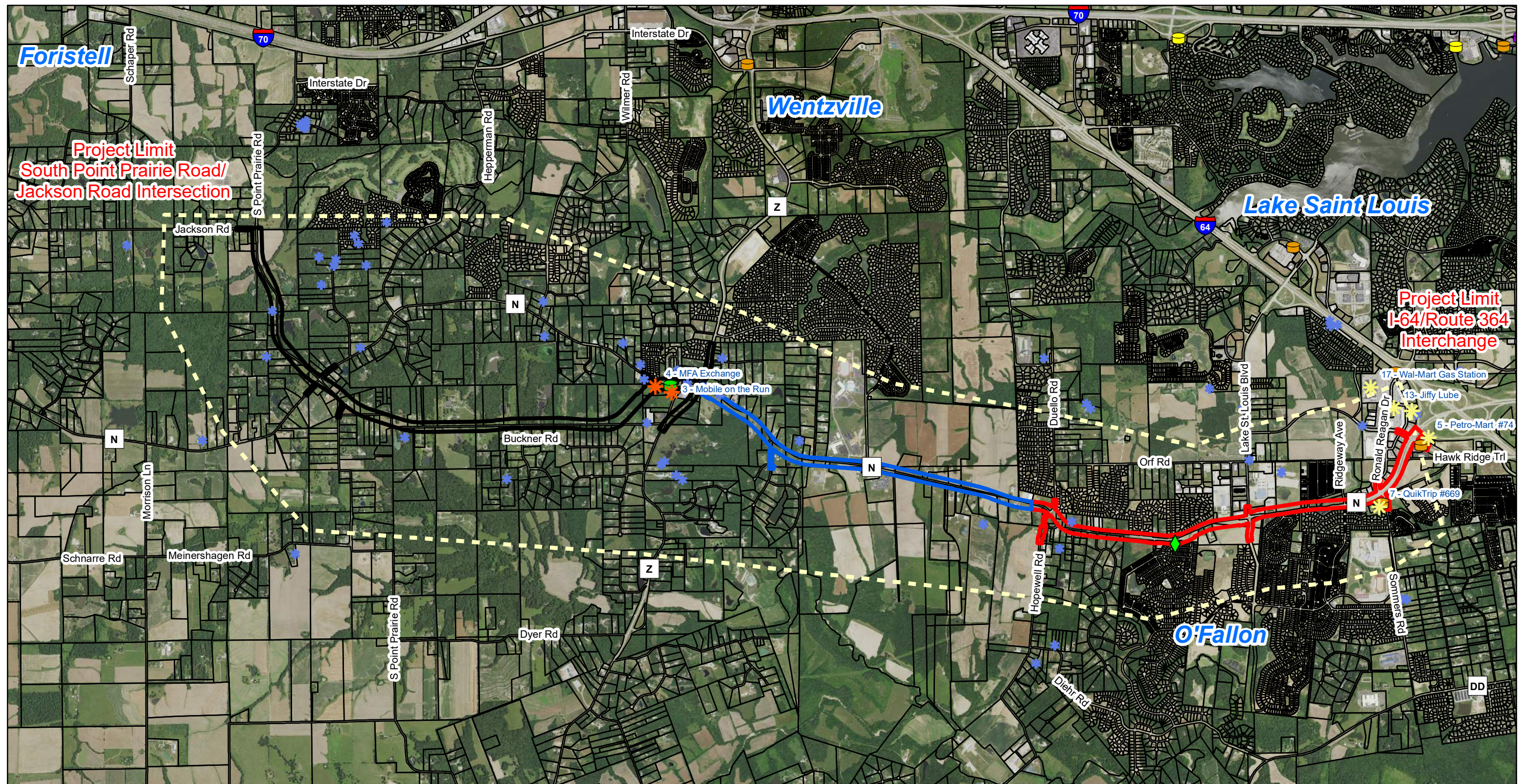
Interstate Drive/Route Z Conceptual Alternative

Exhibit 7 Conceptual Alternative - Interstate Drive / Route Z Route N EA/PEL



0 0.25 0.5 1 1.5 2 Miles





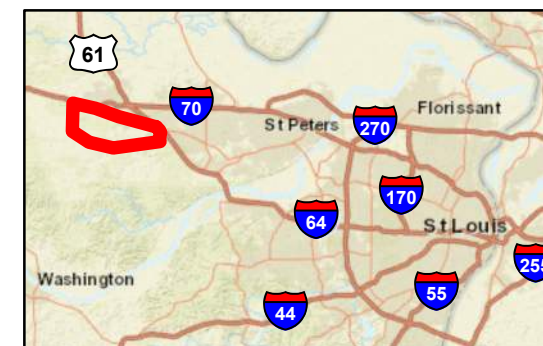
Legend

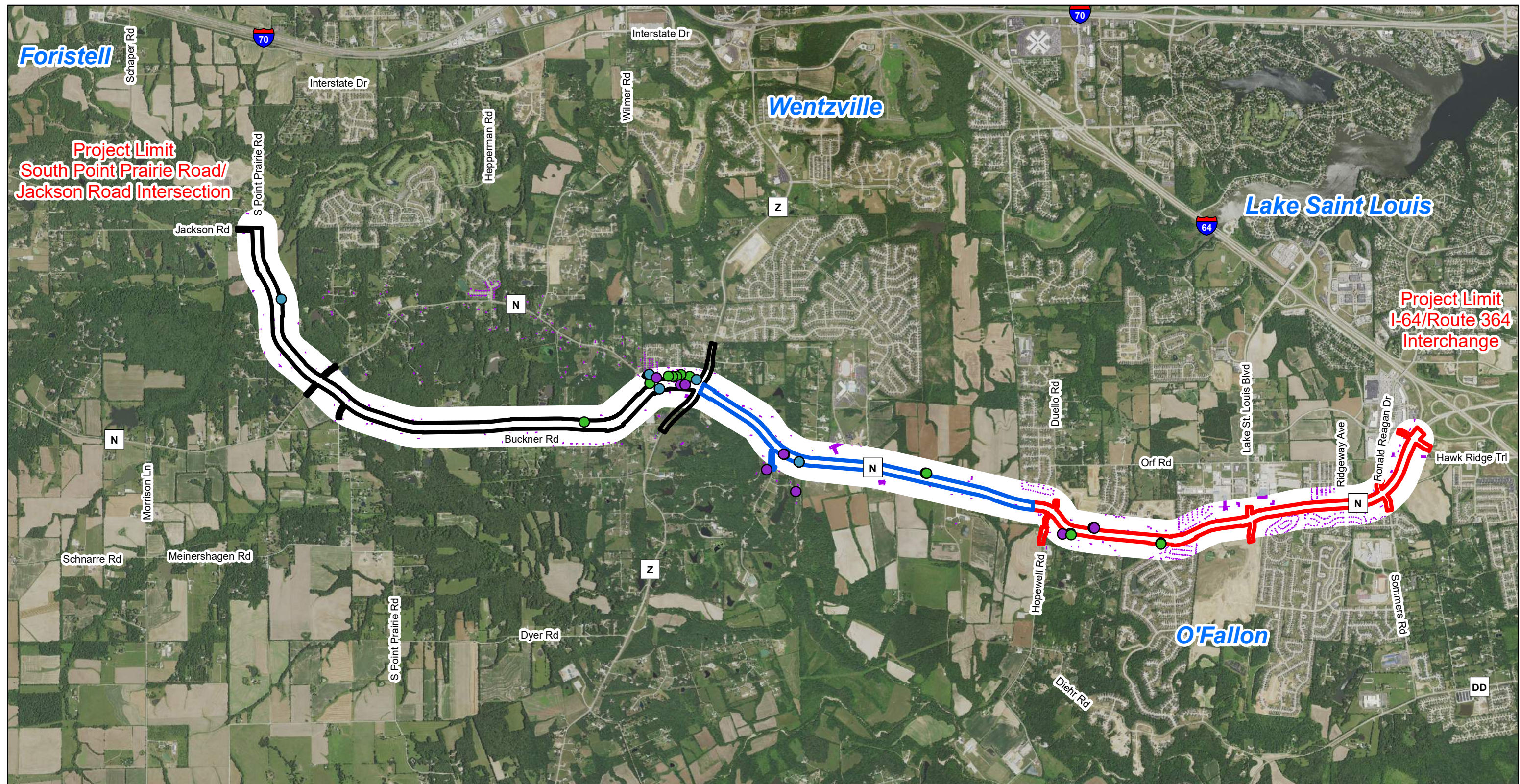
- ★ Non-Phase I ESA Sites
- ★ Phase I ESA Sites
- Investigation/Corrective Action is Ongoing or Incomplete
- No Further Action Letter Issued with Restriction
- Facility Closed Prior to Implementation of 2004 Tanks RBCA
- No Further Action Letter Issued without Restriction
- Operating UST Facilities with No Known Release
- Administrative Closure
- ◆ Active
- ◆ Long-Term Stewardship
- ◆ Environmental Notice
- ◆ Completed
- ◆ Brownfield Assessment
- ◆ Inactive VCP (Terminated/Withdrew)
- + EDR - Recorded Oil and Gas Wells
- ★ EDR - Other Recorded Wells
- PEL Section West
- PEL Section Center
- PEL Section East

Exhibit 8 Regulated Materials Sites Route N EA/PEL



0 0.25 0.5 1 Miles



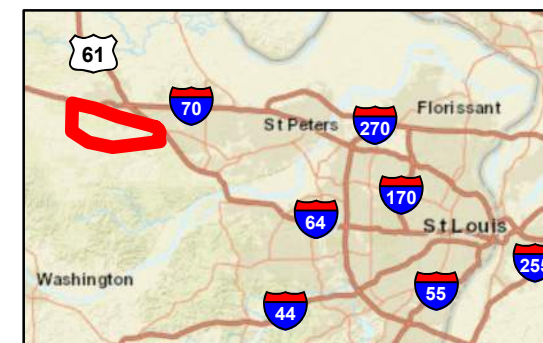
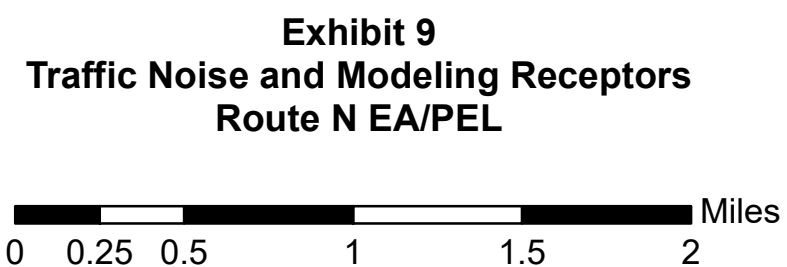


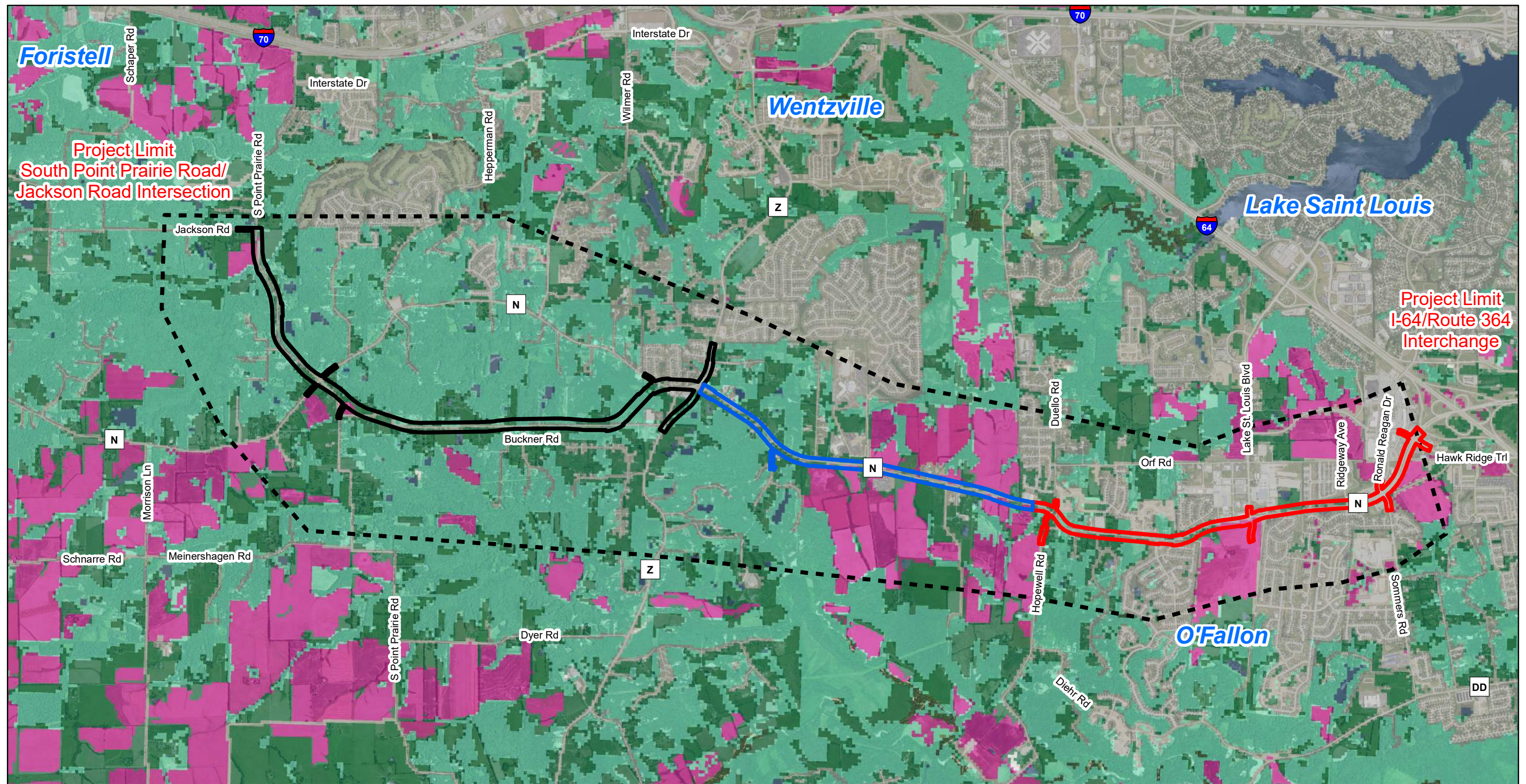
Legend

- PEL Section West
- PEL Section Center
- PEL Section East

Impacted Receptors

- Buckner - 10 Receptors
- Improve Existing - 11 Receptors
- Near South - 10 Receptors





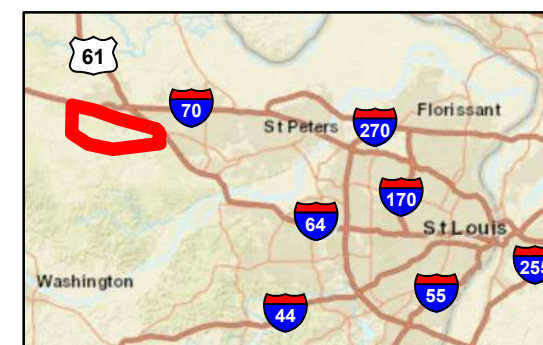
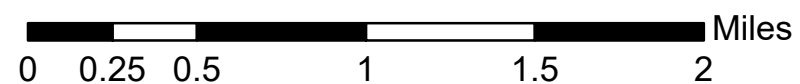
NLCD Land Cover

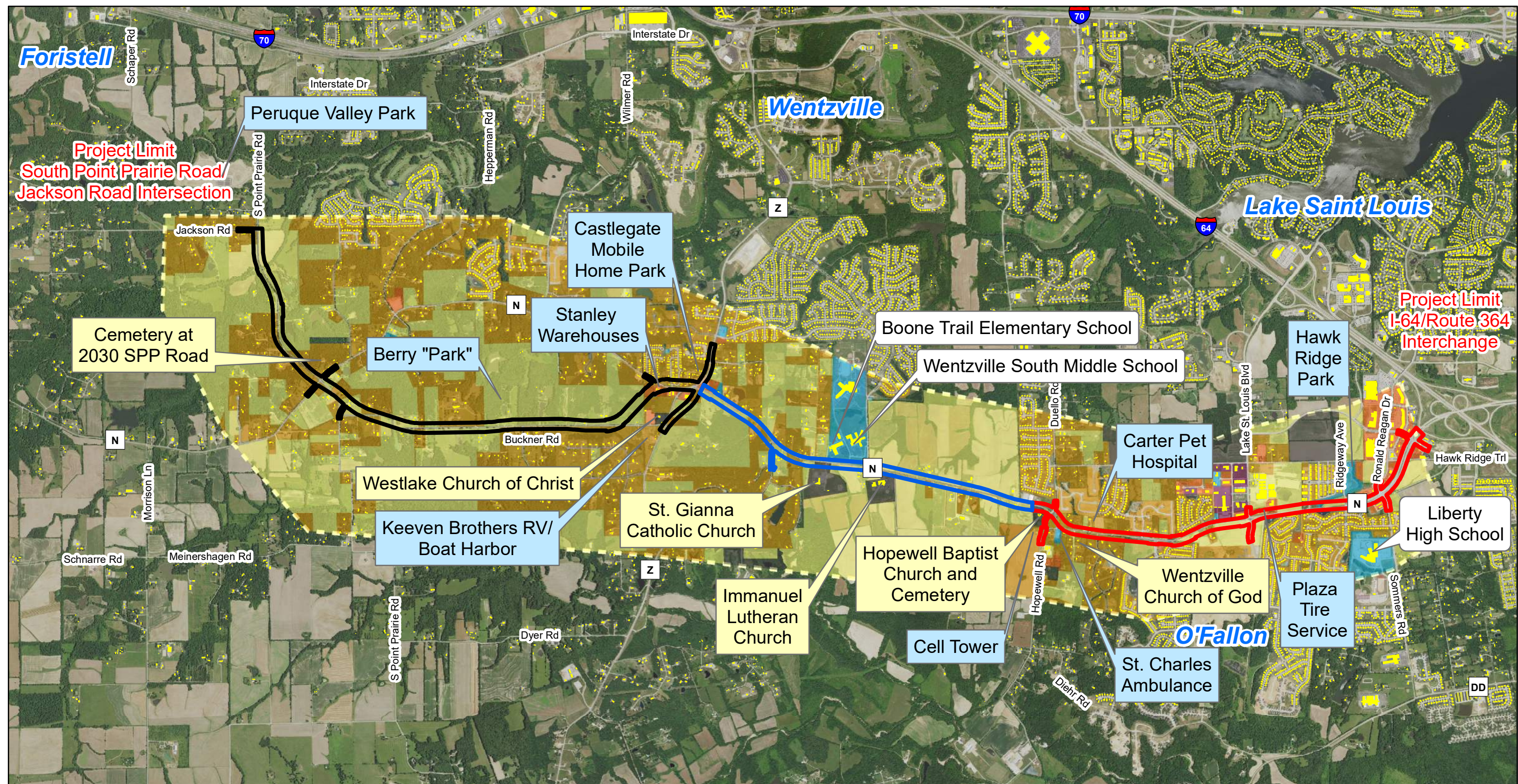
- Open Water
- Developed (#21/22/23/24)
- Barren Land (Rock/Sand/Clay)
- Forest (#41/42/43/52)
- Grassland/Herbaceous
- Pasture/Hay
- Cultivated Crops

- PEL Section West
- PEL Section Center
- PEL Section East
- Study Area



Exhibit 10 Terrestrial Habitats Route N EA/PEL





Legend

- PEL Section West
- PEL Section Center
- PEL Section East

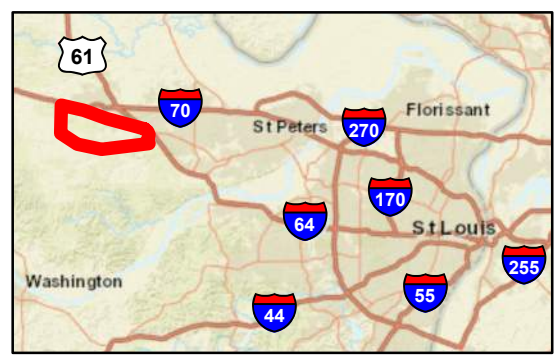
Land Use

- Church
- Farm
- Institutional
- Commercial
- Industrial
- Residential



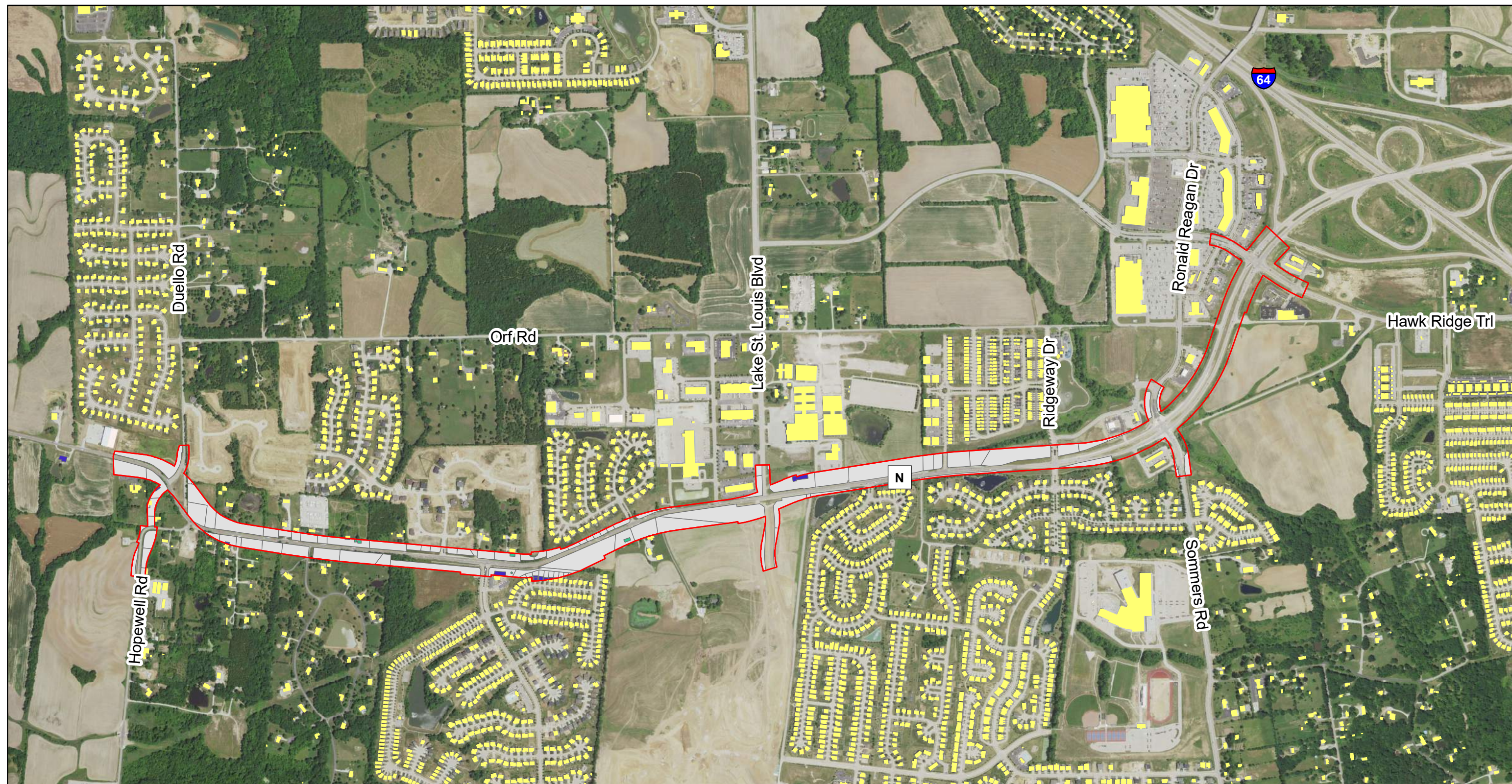
Exhibit 11
Land Use and Important Uses
Route N EA/PEL

0 0.25 0.5 1 1.5 2 Miles



ROUTE N ENVIRONMENTAL STUDY

Explore. Engage. Improve.



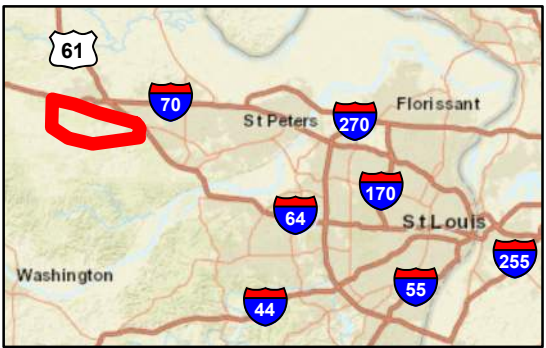
Legend

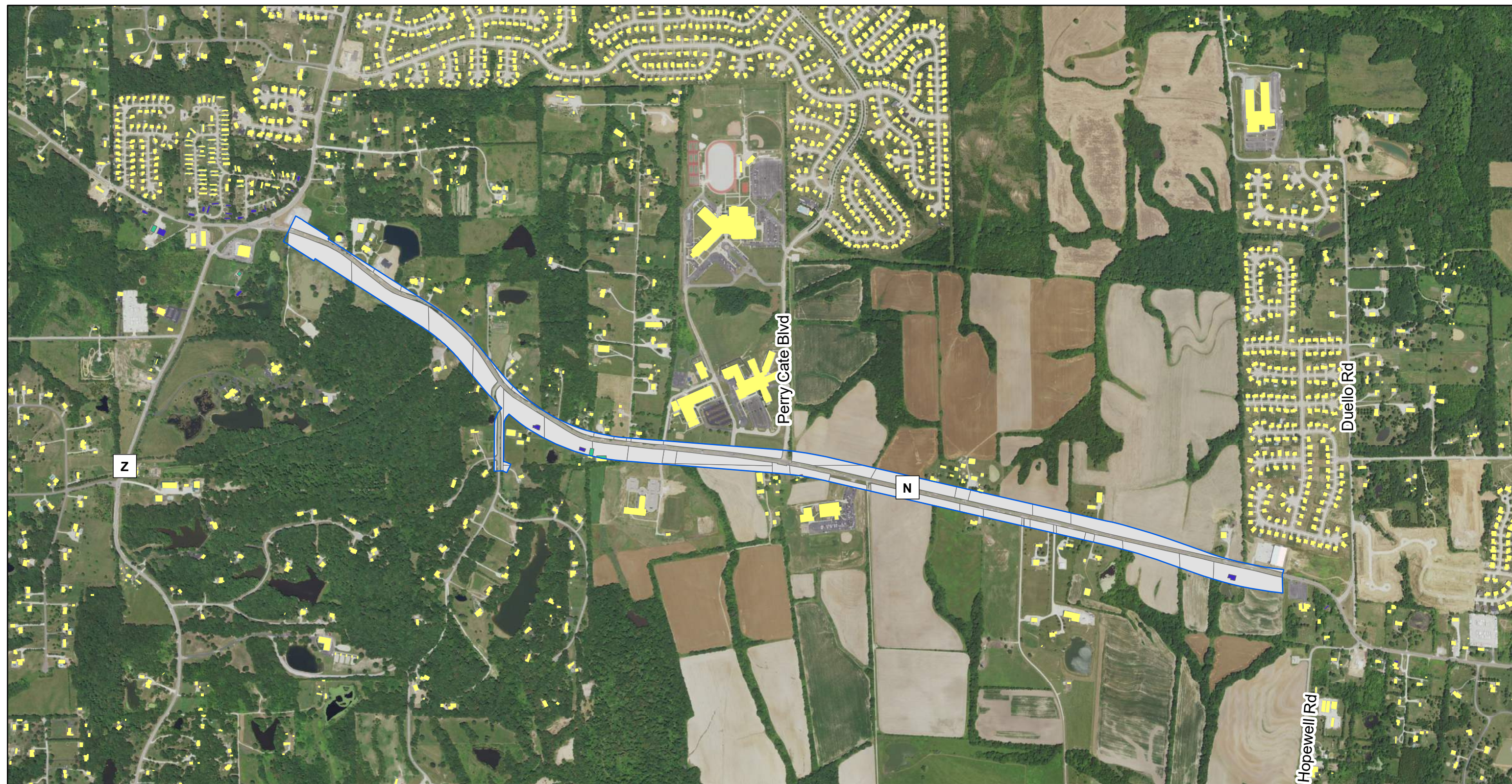
- PEL Section East
- Primary Displacement
- Secondary Displacement
- Building Footprints
- Parcel Acquisition



Exhibit 12 (PEL Section East)
Displacements and Parcel Acquisition
Hopewell Road to I-64
Route N EA/PEL

0 0.1 0.2 0.3 0.4 0.5 Miles



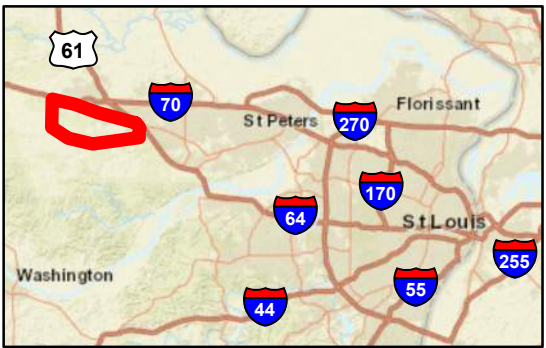
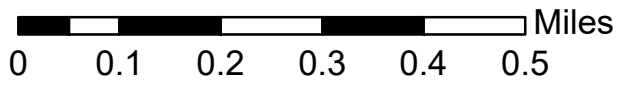


Legend

- PEL Section Center
- Primary Displacement
- Secondary Displacement
- Building Footprints
- Parcel Acquisition



**Exhibit 12 (PEL Section Center)
Displacements and Parcel Acquisition
Route Z to Hopewell Road
Route N EA/PEL**





Legend

- Primary Displacement
- Secondary Displacement
- PEL Section West
- Building Footprints
- Parcel Acquisition



Exhibit 12 (PEL Section West) Displacements and Parcel Acquisition Jackson Road to Route Z Route N E/A PEL

