

March 23, 2023



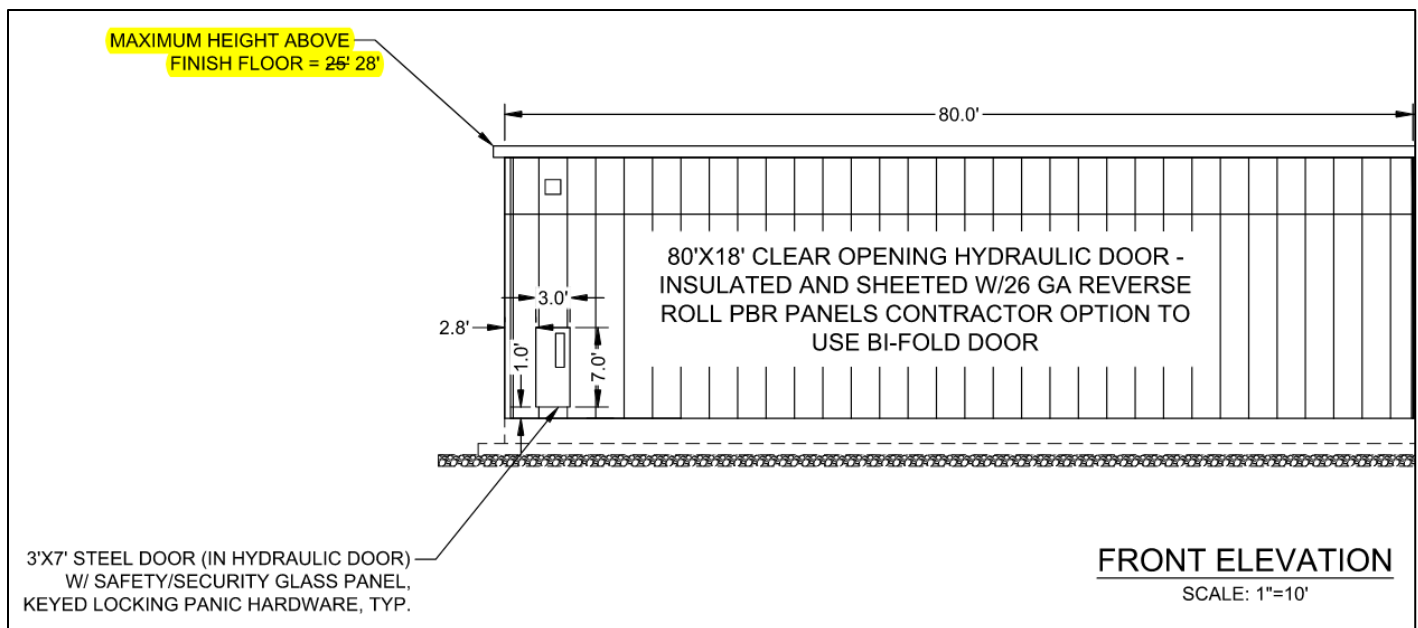
ADDENDUM NO. 2
TO
PROJECT DOCUMENTS FOR THE
BOWLING GREEN MUNICIPAL AIRPORT
CONSTRUCT TWO-UNIT BOX HANGAR
BOWLING GREEN, MISSOURI
MODOT PROJECT NO. 22-051A-1

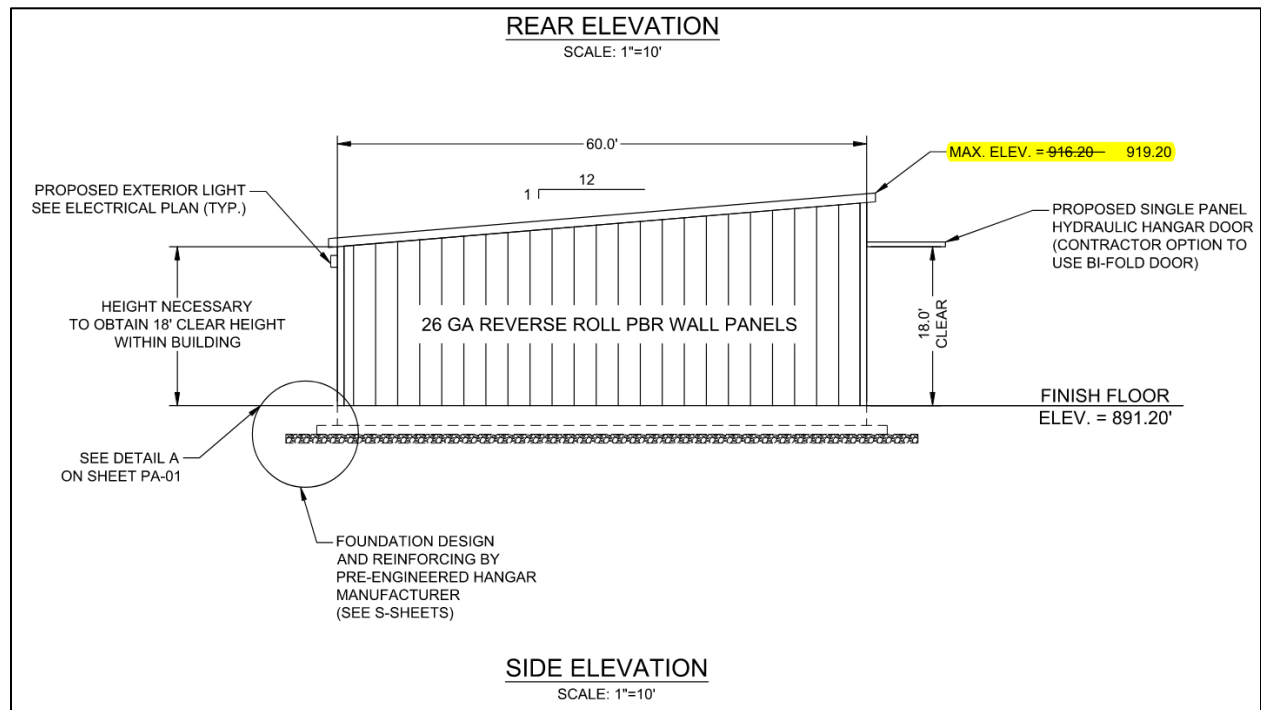
TO ALL PLAN HOLDERS:

This Addendum No. 2 shall be attached to and become part of the Contract Documents for the "BOWLING GREEN MUNICIPAL AIRPORT: CONSTRUCT TWO-UNIT BOX HANGAR". The project documents shall be changed and added to as follows:

PLANS:

- **PLAN SHEET AR-02: BUILDING ELEVATIONS** – see the below update to AR-02, highlighted in yellow below:





- CONSTRUCTION NOTES:**
1. SEE STRUCTURAL DRAWINGS FOR FLOOR SLAB AND FOUNDATION DETAILS
 2. BUILDING ERECTION DRAWINGS, CERTIFIED LOADINGS, FOUNDATION, AND FLOOR PLANS TO BE ENGINEER STAMPED BY A REGISTERED PROFESSIONAL ENGINEER IN THE STATE OF MISSOURI AND MEET ALL APPLICABLE BUILDING CODES
 3. HANGAR INCLUDES 29 GAUGE GALVANIZED STEEL INTERIOR WALLS (WHITE) AT HEIGHT OF 8' EXCEPT BOTH SIDES OF PARTITION WALL SHALL BE FULL HEIGHT.
 4. 4 TO 6-INCH R-19 FIBER GLASS BATT INSULATION WITH A WMP-50 SHEET MEMBRANE BARRIER ON THE WALLS.
 5. 6 TO 8-INCH R-30 FIBER GLASS BATT INSULATION WITH A WMP-50 SHEET MEMBRANE VAPOR BARRIER ON THE CEILING
 6. HANGAR HYDRAULIC DOOR (SIZES AS SHOWN), WITH WALK DOOR AND SHEETED WITH 26 GAUGE REVERSE ROLL PBR PANELS. AT CONTRACTORS OPTION, A BI-FOLD DOOR MAY BE USED. ALL CLEAR HEIGHTS MUST BE MAINTAINED. **THE BI-FOLD DOOR MUST UTILIZE A NYLON STRAP LIFTING SYSTEM.**

SPECIFICATIONS:

- **SECTION 08120: Steel Doors and Frames** – see the below update to page 08120-3, highlighted in yellow below:

(Page 3): 08120 Section 2.3-A.

2.3 HYDRAULIC AIRCRAFT DOOR AND ASSOCIATED EQUIPMENT:

- A. Provide bracket, wiring, switch, motor(s), and all associated equipment necessary for the installation of one 80' wide x 18' clear opening hydraulic aircraft door and one 60' wide x 18' clear height hydraulic aircraft door. Motor(s) and equipment shall be of the type and size as recommended by the door manufacturer to sufficiently operate the installed equipment. Contractor shall have the option to use bi-fold doors with same requirements. **Bi-fold doors may not use steel/wire cables, only a nylon cabling system will be allowed.**
- B. The doors shall have auto-lock safety system built into each side.
- C. The doors shall be of either bolt- or welded-together on-site construction.
- D. Hydraulic doors shall be provided with a 12-Volt backup system to allow operation when power is not available. Bi-fold doors shall be provided with a hand-crank system or a battery backup system of operating the door when power is not available.

ADDITIONAL CLARIFICATIONS:

- Base Bids:
 - A fully integrated building package from one supplier, Erect-A-Tube or equal, is acceptable. This includes the bi-fold door actuating system from said supplier.

NOTES:

- The phone number (Microsoft Teams Meeting) for the bid letting is +1 563-265-2421- Conference ID No. 48491100#.

If you have any questions, please contact me at 515.669.1815.

Sincerely,

McCLURE



Dave Joens, P.E.