



SCI ENGINEERING, INC.

Earth. Science. Solutions

History and Company Information

SCI Engineering, Inc. is a multi-discipline professional consulting firm offering Geotechnical, Environmental, Natural Resource, Cultural Resource and Construction Material Testing Services throughout the United States.



SCI Engineering, Inc. was originally established as Soil Consultants, Inc. in 1978. After adding several new disciplines throughout the 1980s and 1990s, the company name was changed in 1999 to SCI Engineering, Inc. to better reflect the diverse services provided. Since its founding, SCI has grown steadily to become an award-winning firm now with more than 150 employees comprised of geotechnical engineers, geologists, archaeologists, earth scientists, construction experts & engineering technicians in seven office locations.



SCI Office Locations:

St. Charles, MO

130 Point West Blvd.
St. Charles, MO
63301
636-949-8200

O'Fallon, IL

650 Pierce Blvd.
O'Fallon, IL
62269
618-624-6969

Rolla, MO

1114 North Bishop
Rolla, MO
65401
573-426-4901

Austin, TX

105 Texas Avenue
Suite 105
Round Rock, TX 78664
512-996-9199

San Antonio, TX

9330 Corporate Drive
Suite 610
Selma, TX 78154
210-660-SCIE (7243)

Denver, CO

6753 East 47th Avenue Drive
Unit H
Denver, CO 80216
303-321-3154

**For more information contact Bryan Carlo, Senior Archaeologist at
(618) 206-3048 • bcarlo@sciengineering.com • www.sciengineering.com**



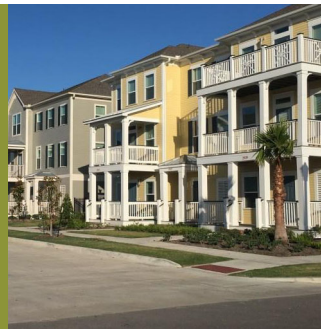
SCI ENGINEERING, INC.

Earth. Science. Solutions.

SCI is a multi-discipline professional consulting engineering firm offering Environmental, Geotechnical, Natural Resource, Cultural Resource and Construction Materials Testing Services from design development through final construction. SCI works with clients across the country in a variety of markets.



**Federal
Government,
Local Agencies**



**Urban
Redevelopment**

- Single Structure
- Multi-phased
- High Profile Projects

Residential

Multifamily, Senior Living and Single Family Developments



**Commercial/
Retail**



Energy



Transportation



**Industrial/
Warehouse**

Healthcare



Education



**For more information contact Bryan Carlo, Senior Archaeologist at
(618) 206-3058 • bcarlo@sciengineering.com • www.sciengineering.com**



Earth. Science. Solutions.

Environmental Services

- Phase One and Two Environmental Site Assessments
- NEPA Evaluations and Consultations
- Third Party Air Sampling
- UST Removal Monitoring, Reporting and Plume Delineation
- Remedial Action Plans, System Monitoring and Reporting
- GeoProbe, Piezometer and Monitoring Well Installations
- Subsurface Explorations
- Surveys for Asbestos, Lead-based Paint, and Mold
- Remediation Specifications
- National Pollutant Discharge Elimination System (NPDES) Monitoring and Reporting
- Spill Prevention Control and Countermeasure (SPCC) Plans
- Compliance Audits and Annual Emissions Reporting
- Noise testing Services
- Risk Assessments
- Regulatory Consulting

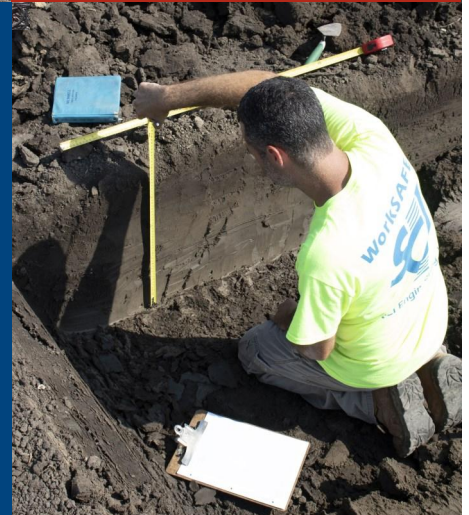


Geotechnical Services

- Foundation Analysis
- Seismic Hazard Analysis
- Soil Borings
- Soil Stabilization
- Excavation Design
- Slope Stability Analysis
- Geophysical Imaging — GPR, etc.
- Groundwater Studies
- Earth Dam Design
- Pavement Design
- Failure Analysis
- Retaining Wall Design
- Subsurface Exploration
- Undermining Evaluation & Remediation

Natural Resource Services

- Stream and Wetland Mitigation Banking
- Wetland Delineations and Permitting
- Endangered Species Consultation
- Bioengineering/Biostabilization
- Natural Resource Mapping Watershed Assessments
- Flora and Fauna Studies
- 401, 402, 404 Clean Water Act Permits
- Wetland and Stream Restoration Design
- Stormwater Pollution Prevention Plans
- Water Quality Sampling and Monitoring
- Erosion Control Monitoring



Construction Services

- Structural Masonry Quality Control
- Portland Cement Quality Control
- Asphaltic Concrete Quality Control
- Foundation Testing
- Controlled Earth Fill Testing
- Structural Steel Observation
- Laboratory Soil Testing
- Aggregate Testing
- USACE-Certified Laboratories
- Non-destructive Testing
- ICC-certified Special Inspectors for:
 - Structural Steel Welding
 - Structural Masonry
 - Reinforced Concrete
 - Post-Tensioned Concrete
 - Fireproofing



Cultural Resource Services

- Section 106 Correspondence
- Archaeological Surveys
 - Phase I, Phase II and Phase III
- Historic Cemetery Delineation
- Geophysical Investigations
- Native American Consultations
- Historic Property Documentation
 - HABS/HAER
- View Shed Calculations
- Archaeological/Historic Property Impact Studies
- Historic Research
- Pre-Construction Consultations
- Archaeological Monitoring of Construction

**For more information contact Bryan Carlo, Senior Archaeologist at
(618) 206-3048 • bcarlo@sciengineering.com • www.sciengineering.com**

Cultural Resource Services



SCI ENGINEERING, INC.

Archaeological

Representative Projects:

- City Arch River Phase III
- Phase I Lucas Avenue Reopening
- Spire Pipeline
- Enbridge Pipeline & TransCanada Pipeline in IN, KY, OK, NE.
- Rock Island Trail Phase I
- Prairie DuPont Levee Phase I
- Mitchell Mound Center Phase II
- Waste Management 80-acre tract Phase 2
- Carondelet Coke Plant Phase III
- Scott Air Force Base Building 48

Architectural

Representative Projects:

- Bend Road Bridge
- Illinois Route 3 Connector

“Having won a well-deserved national award from the American Cultural Resources Association for this project...SCI demonstrated an ability to go above and beyond to acquire, explore and preserve the archaeological record present at this important site...SCI put extensive planning time in working with the museum project team to achieve the dual goals of archaeological field study and community involvement.”

—Debbie Grinnel
Vice President, Museum Services

The Cultural Resource Services Group offers in-house services for a wide range of Cultural Resource projects and has extensive experience completing similar work with various agencies and firms across the United States. Under the leadership of Don Booth, M.A., the Cultural Resources group has a proven record of producing a high-quality product for Commercial, Residential, Transportation, Industrial, Federal, Local Municipalities and Cell Tower projects. They have also worked on numerous Architectural Surveys in three different states. SCI's Cultural Resource staff has three Secretary of the Interior Qualified Archaeologists and a pool of ten archaeological field technicians available.



Cultural Resource Services

- Pre-project consultation
- Section 106 notifications
- Phase One Cultural Resource Surveys
- Phase Two Cultural Resource Testing to determine eligibility for the National Register of Historic Places
- Phase Three mitigation of an archaeological site
- Construction Monitoring
- Native American Consultation
- Architectural Survey
- HABS/HAER Documentation

**For more information contact Bryan Carlo, Senior Archaeologist at
(618) 206-3048 • bcarlo@sciengineering.com • www.sciengineering.com**