



**SCI ENGINEERING, INC.**

**Earth. Science. Solutions**

## History and Company Information

SCI Engineering, Inc. is a multi-discipline professional consulting firm offering Geotechnical, Environmental, Natural Resource, Cultural Resource and Construction Material Testing Services throughout the United States.



SCI Engineering, Inc. was originally established as Soil Consultants, Inc. in 1978. After adding several new disciplines throughout the 1980s and 1990s, the company name was changed in 1999 to SCI Engineering, Inc. to better reflect the diverse services provided. Since its founding, SCI has grown steadily to become an award-winning firm now with more than 150 employees comprised of geotechnical engineers, geologists, archaeologists, earth scientists, construction experts & engineering technicians in seven office locations.

### SCI Office Locations:

#### **St. Charles, MO**

130 Point West Blvd.  
St. Charles, MO  
63301  
636-949-8200

#### **O'Fallon, IL**

650 Pierce Blvd.  
O'Fallon, IL  
62269  
618-624-6969

#### **Rolla, MO**

1114 North Bishop  
Rolla, MO  
65401  
573-426-4901

#### **Austin, TX**

105 Texas Avenue  
Suite 105  
Round Rock, TX 78664  
512-996-9199

#### **San Antonio, TX**

9330 Corporate Drive  
Suite 610  
Selma, TX 78154  
210-660-SCIE (7243)

#### **Denver, CO**

6753 East 47th Avenue Drive  
Unit H  
Denver, CO 80216  
303-321-3154

**For more information contact Dave Nolan, P.E., Vice President at  
(636) 757-1024 • [dnolan@sciengineering.com](mailto:dnolan@sciengineering.com) • [www.sciengineering.com](http://www.sciengineering.com)**



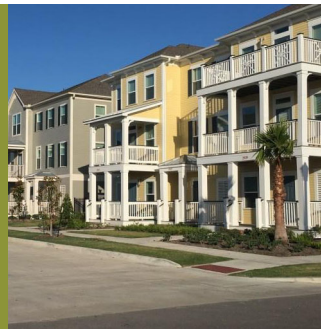
**SCI ENGINEERING, INC.**

**Earth. Science. Solutions.**

**SCI is a multi-discipline professional consulting engineering firm offering Environmental, Geotechnical, Natural Resource, Cultural Resource and Construction Materials Testing Services from design development through final construction. SCI works with clients across the country in a variety of markets.**



**Federal  
Government,  
Local Agencies**



**Urban  
Redevelopment**

- Single Structure
- Multi-phased
- High Profile Projects

**Residential**

Multifamily, Senior Living and Single Family Developments



**Commercial/  
Retail**



**Energy**



**Transportation**



**Industrial/  
Warehouse**

**Healthcare**



**Education**



**For more information contact Dave Nolan, Vice President at  
(636) 757-1024 • [dnolan@sciengineering.com](mailto:dnolan@sciengineering.com) • [www.sciengineering.com](http://www.sciengineering.com)**





# Earth. Science. Solutions.

## Environmental Services

- Phase One and Two Environmental Site Assessments
- NEPA Evaluations and Consultations
- Third Party Air Sampling
- UST Removal Monitoring, Reporting and Plume Delineation
- Remedial Action Plans, System Monitoring and Reporting
- GeoProbe, Piezometer and Monitoring Well Installations
- Subsurface Explorations
- Surveys for Asbestos, Lead-based Paint, and Mold
- Remediation Specifications
- National Pollutant Discharge Elimination System (NPDES) Monitoring and Reporting
- Spill Prevention Control and Countermeasure (SPCC) Plans
- Compliance Audits and Annual Emissions Reporting
- Noise testing Services
- Risk Assessments
- Regulatory Consulting

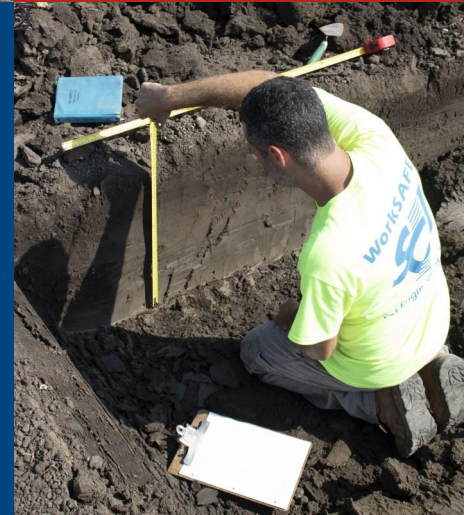


## Geotechnical Services

- Foundation Analysis
- Seismic Hazard Analysis
- Soil Borings
- Soil Stabilization
- Excavation Design
- Slope Stability Analysis
- Geophysical Imaging — GPR, etc.
- Groundwater Studies
- Earth Dam Design
- Pavement Design
- Failure Analysis
- Retaining Wall Design
- Subsurface Exploration
- Undermining Evaluation & Remediation

## Natural Resource Services

- Stream and Wetland Mitigation Banking
- Wetland Delineations and Permitting
- Endangered Species Consultation
- Bioengineering/Biostabilization
- Natural Resource Mapping Watershed Assessments
- Flora and Fauna Studies
- 401, 402, 404 Clean Water Act Permits
- Wetland and Stream Restoration Design
- Stormwater Pollution Prevention Plans
- Water Quality Sampling and Monitoring
- Erosion Control Monitoring



## Construction Services

- Structural Masonry Quality Control
- Portland Cement Quality Control
- Asphaltic Concrete Quality Control
- Foundation Testing
- Controlled Earth Fill Testing
- Structural Steel Observation
- Laboratory Soil Testing
- Aggregate Testing
- USACE-Certified Laboratories
- Non-destructive Testing
- ICC-certified Special Inspectors for:
  - Structural Steel Welding
  - Structural Masonry
  - Reinforced Concrete
  - Post-Tensioned Concrete
  - Fireproofing



## Cultural Resource Services

- Section 106 Correspondence
- Archaeological Surveys
  - Phase I, Phase II and Phase III
- Historic Cemetery Delineation
- Geophysical Investigations
- Native American Consultations
- Historic Property Documentation
  - HABS/HAER
- View Shed Calculations
- Archaeological/Historic Property Impact Studies
- Historic Research
- Pre-Construction Consultations
- Archaeological Monitoring of Construction

**For more information contact Dave Nolan, P.E., Vice President at  
(636) 757-1024 • [dnolan@sciengineering.com](mailto:dnolan@sciengineering.com) • [www.sciengineering.com](http://www.sciengineering.com)**

# Construction Materials Inspection and Testing Services



**SCI ENGINEERING, INC.**

## Representative Projects

MoDOT Bridge Deck Testing

Route 141, St. Louis County

Washington, Missouri Bridge

I-64 & Rieder Road Interchange

Highway 47 Missouri River Bridge

Merchants Bridge

Stan Musial, Veteran's Memorial Bridge

IL Approach and Rte. 3 & I-70

IDOT Martin Luther King Ramp & New Connector

IL I-64 & Rieder Road Interchange

Page Ave Extension (Rte. 364)

Lambert Airport Extension

On-call Agreements with multiple Missouri and Illinois counties and municipalities

**"Thanks for the reports and great service on our job! You were professional and a great assistance! I am referring you to whomever I can, and we will call you on anything we can..."**

—Tim Gelnett  
Magruder Construction

SCI's Construction Materials Inspection and Testing personnel work closely with clients to inspect and test the materials used in construction to reduce risks and help identify defects and deficient work, resulting in fewer problems and a dramatic improvement in the quality of construction. Our inspectors are certified by the International Code Council, American Welding Society, American Concrete Institute and various Departments of Transportation around the country. Our clients include Missouri, Illinois, Colorado, Arkansas, Iowa, and Texas DOT, multiple municipalities and counties in Missouri and Illinois as well as private contractors.

## Soil, Aggregates and Flexible Pavements

- Soil Classifications
- Foundation Bearing Inspection
- Deep Foundation Installation Monitoring
- Soil and Aggregate Density/Compaction Testing
- Settlement Monitoring
- Earth Retention Systems
- Asphaltic Concrete Density & thickness Determination
- Maximum Theoretical Specific Gravity of Asphaltic Concrete
- Asphalt Content Determination
- Aggregate QC Tests

## Concrete Structures and Pavements

- Placement of reinforcing steel
- Verification of mix designs
- ACR/ASR Reactivity
- Shotcrete placement observations
- Placement of structural concrete
- Compression and Flexural Testing
- Placement of anchorages and concrete embedded components
- Post Tension Concrete Systems
- Floor flatness testing
- QCT/Concrete Scanning GPR

## Structural Steel Welding and Bolting

- Visual weld observations
- Impact wrench calibration
- Dye penetrant testing
- Material identification
- Bolt torque verification
- Ultrasonic testing
- Magnetic particle testing
- Paint thickness testing
- Welding of reinforcing steel

## Fire Safety & Other Services

- SFRM thickness and consistency testing
- SPRM Cohesion/Adhesion testing
- Firestop Inspections
- Intumescent Paint
- Wood Framing

## Masonry

- Material Identification
- Grout testing
- Welding of reinforcing steel
- Grout placement
- Proper erection practices
- Mortar Testing
- Reinforcing steel placement
- Embedded items

**For more information contact Dave Nolan, Vice President at  
(636) 757-1024 • [dnolan@sciengineering.com](mailto:dnolan@sciengineering.com) • [www.sciengineering.com](http://www.sciengineering.com)**