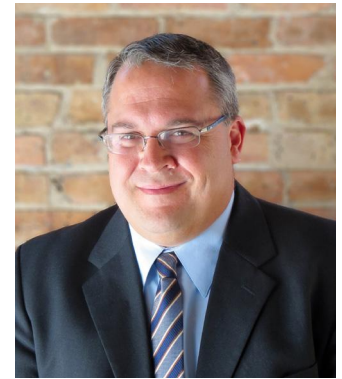


TRAILS & SIDEWALKS



TERRA's trails and sidewalks design experience includes working as the prime consultant on numerous trails and/or sidewalks projects throughout the Midwest. TERRA's Team has worked with numerous municipalities throughout the Midwest, on various trail and sidewalk design projects ranging from pedestrian and bicycle facilities to shared-use path connections as well as the creation of a new trail, altogether. These projects require TERRA to assemble a team whose experience matches the specific, tailored needs of each, individual project, which we do so by utilizing members from all three (3) of our offices – St. Louis, Peoria, and Chicago. For every trail and sidewalk design project that we complete, TERRA's Team performs the necessary due diligence to ensure that everything is done to the Client's satisfaction as well as the various procedural requirements set forth by ADA, PROWAG, MoDOT, and/or the various states in which each project is located. Our Team will go out and review the actual project location, after sitting down and discussing the project details and specifications and wants of the clients.



Point of Contact

Chris Hutchinson, PE, PTOE

chutchinson@terraengineering.com

O: 314.395.9899 | M: 314.614.2410

1804 Borman Circle Drive, Ste 200

St. Louis, MO 63146

EXPERIENCE

- Centennial Trail
- Cal-Sag Multi-Use Trail
- Burnham Greenway Trail
- North Branch Bike Trail
- Stony Creek Bike Trail
- Whistler Woods Trail Study
- Southwest Suburban Bike Plan
- Illinois Prairie Path
- Greene Valley Bike Path
- Salt Creek Greenway Trail
- Wood Dale Bike Trail
- Prospect Heights Bike Path
- Thorn Creek Bike Trail
- Mallard Lake Bike Trail
- DuPage River Trail
- Rolling Meadows Bike Path
- Glen Ellyn Road Trail
- Sullivan Woods Bike Trail
- Meadows Park Bike Trail
- Poplar Creek Trail
- West Branch Trail
- Springbrook Prairie Trails
- Bike Trail Bridge Over IL 59
- US 20 Bike Trail
- Three Rivers Bike Trail
- University City ADA
- Folkers Avenue Reconstruction
- Harrison Impact Zone

Examples of Multi-Use Trail Services that TERRA Provides:

- Trail/Path Design
- Trail/Path Extensions
- GIS/Database Inventory Services
- Drainage/Stormwater Facilities Design
- Access/Crossing Upgrades Design
- Site Development
- Landscape Architecture
- Land Use Planning
- Surveying
- Structural Engineering
- Construction Inspection/Administration/Owner's Rep

WBE*

Karen Steingraber, PE, President • Jamil Bou-Saab, PE, Executive Vice President
George Ghareeb, PE, F.ASCE, Associate Vice President • Eric Therkildsen, PE, Associate Vice President

MEET THE TEAM



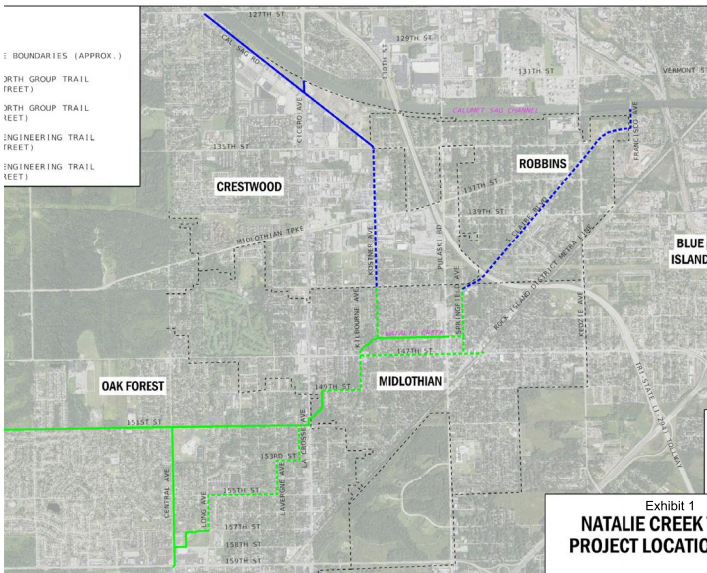
Mr. Landeweer is responsible for the preparation of engineering plans and specifications, project reports, and other work related to transportation design and site development work, with extensive experience in multi-use trails and bicycle path design. His experience includes all phases of transportation engineering, including preliminary and conceptual engineering as well as design plan preparation. Mr. Landeweer's experience also includes all aspects of civil engineering such as horizontal and vertical geometry, pavement geometrics, maintenance of traffic, drainage (including detention), pavement design, traffic signal/interconnect design, street lighting design, and landscaping.



Mr. Hutchinson has acquired more than 20 years of experience in providing traffic and transportation engineering services for a variety of projects and clients. Chris has completed numerous projects throughout the Midwest, with a focus on sidewalk design at the replacement and/or new construction level. His experience includes traffic modeling and analysis, traffic signal design, signal optimization, sidewalk design, roadway design, and traffic studies. He has been trained and certified in MoDOT's LPA process and will be responsible for ensuring our team utilizes the LPA process and will manage this process for any On-Call tasks with an LPA. Chris has worked on various sidewalk design projects including the 2019 ADA Ramps and Sidewalks Replacement Program and the Washington Street.



Mr. Graham has over 25 years of experience in the enhancement of parks and public spaces, including the preparation of final design and construction documents. He is a past president of the Illinois Chapter of the American Society of Landscape Architects and is actively involved in the creation of environmentally sustainable design solutions for site development. He has worked with all our Project Managers as well as Design Engineers on parks, trails, roadway, and sidewalk projects, ensuring that the final product of each project is not only within budget and sustainable but also aesthetically pleasing. His experience includes the Cal-Sag Multi-Use Trail, the Washington Street TIGER II Complete Streets, and the Riverfront Master Planning projects.

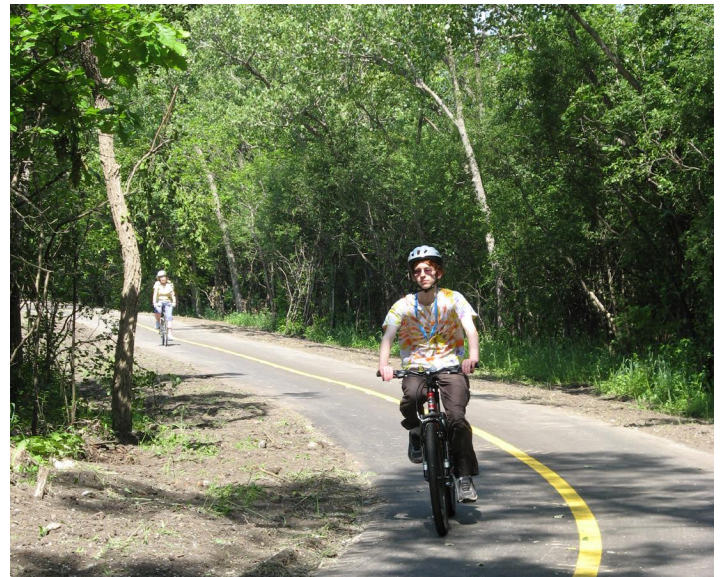


NATALIE CREEK MULTI-USE TRAIL

Natalie Creek Trail is a proposed 13-mile-long bicycle trail located in southern Cook County. The project consists of three legs of a proposed multi-use path with the intersection of Natalie Creek and Kostner Avenue being the hub. The northwest leg will proceed to the intersection of Cal-Sag Road and 127th Street. The northeast leg will proceed to the intersection of 143rd Street and Old Western Avenue. The southwest leg will proceed to Cicero Avenue and 151st Street where it will split into two additional legs; one continuing to the intersection of 159th Street and Central Avenue and the other continuing west to the intersection of 151st Street and Oak Park Avenue with a third leg along Central Avenue between 151st Street and 159th Avenue. Five different municipal agencies are involved: Village of Midlothian (lead agency), Village of Robbins, City of Blue Island, Village of Crestwood and City of Oak Forest. The trail will become a key regional trail connecting the Cal-Sag Trail on the north with the Tinley Creek Trail system on the south.

The project includes the preparation of a Phase I Project Development Report and will be processed through IDOT with the anticipation that federal funds will be utilized for the project. The preparation of the report will involve the selection of the project corridor, topographic survey of the proposed path, development of horizontal and vertical geometrics, and public involvement. Alternative alignment studies will also be performed at several locations to summarize the various opportunities and constraints for the various alignment choices. New prefabricated steel bridge structures will be constructed at several locations across streams.

- Key Personnel: Dave Landeweer, PE, ENV SP
- Reference: Karen Kreis, Village of Midlothian 708.389.0200, kkreis@villageofmidlothian.org



CAL-SAG MULTI-USE TRAIL

The Cal-Sag Trail, located in southern Cook County, is a marathon length trail connecting across Chicago Southland from Indiana and the Chicago Lakefront to Lemont, Illinois and the I&M Canal Trail. TERRA's Senior Project Manager, David Landeweer, has provided transportation and construction engineering for several phases throughout the project. TERRA was selected to perform Phase III engineering for several projects on the trails east end.

The trail is a key component of the Grand Illinois Trail by achieving connectivity to the Centennial Trail in Lemont (including the 92-mile DuPage County network) and the Burnham Greenway (including the entire Chicago bike trail network and Lakefront Trail) near the Indiana state line. Direct connectivity has also been achieved with the Tinley Creek Trail system, the Palos Forest Preserve Trail system as well as the Major Taylor Trail, completing more than 5 miles of trail connectivity.

Prefabricated steel bridge structures were constructed at several locations across streams. In addition, slope wall modifications were performed at numerous existing roadway bridge locations to allow the path to be constructed under the roadway adjacent to the channel.

- Key Personnel: Dave Landeweer, PE, ENV SP, Keven Graham, FASLA, PLA, CLARB
- Reference: Mark Miller, City of Blue Island, 708.396.7143