

### **ABOUT US**

Howe Company, LLC (Howe Co) started business in 2014 when Shannon Howe purchased the Missouri County bridge engineering and land surveying business from a previous employer. The purchase of all the existing county bridge engineering contracts has allowed Shannon and his team to provide uninterrupted service to his existing clients.

The majority of our team members have 15-30 years of experience with local agency transportation projects. Our focus on the rapid delivery of projects has raised the bar on performance and allowed many Local Agencies to complete projects faster than ever before. We have been fortunate to have several clients trust us to deliver multiple projects for their communities in the form of repeat work.

### **PHILOSOPHY**

We will get your project ready to advertise fast. We have developed a process, hired key staff, and continue to make improvements to our production methods in order to consistently deliver projects in a short period of time. Our goal is to deliver projects to MoDOT within 8-10 months. Our track record is excellent. Ask us, and we'll show you the numbers.

### **TECHNICAL EXPERTISE & EXPERIENCE**

Relax, knowing we have all the technical expertise needed to complete your project. Our All-Star team consists of professional engineers, (P.E.), a professional structural engineer, (S.E.), senior designers, project managers, land surveyors, and other experts.

### **CAPACITY & CAPABILITY**

We can handle 15-20 projects per year with some projects in the design phase and some in the construction phase. We have experience with:

- Horizontal & Vertical Roadway Design
- Gravel Roads
- City Streets
- Industrial Roads/Streets
- Turning Lanes
- Parking & Multi-Use areas
- Highway & Street Entrances
- Concrete & Asphalt Pavements
- Storm drainage (inlets, piping, & channels)
- Chip Seals
- Crack seal & seal coats
- Asphalt overlays

### **PERFORMANCE**

In order to illustrate our performance and range of expertise, we are providing a performance summary chart and some project profiles which illustrate the range of our expertise.

This brochure provides information about our experience, technical capabilities, and performance. We are proud of our ability to deliver projects. Please consider us when you plan your next project.



**South Harrison R-2 School District  
Career Center Road, Parking Lot, and Sidewalk  
Improvements, Bethany, MO**

This project included upgrading parking areas to concrete pavement, installation of curb & gutter, curb inlets, sidewalks, & storm piping.

Reference: Dennis Eastin, Superintendent

Phone: 660-425-8044



**Lewis County Regional Port Authority  
Terminal Rd Improvements, Phase 1-WCI14000161**

This project consisted of linear grading, aggregate surfacing (Type 1 Aggregate for Base), 8" steel pipe, and erosion control measures. Construction cost was \$59,370.

Reference: Ralph Martin, Director

Phone: (573) 767-5393



**Lewis County Regional Port Authority  
Pavement Improvements, Phase 1-WCI15000161**

This project consisted of excavation of existing surfacing and sub-grade, cut compaction, placement of compacted base, construction of reinforced concrete pavement.

Construction cost was \$47,520.

Reference: Ralph Martin, Director

Phone: (573) 767-5393



**Boone County - Mexico Gravel Rd  
Bridge Replacement and Roadway Improvements**

This project included a bridge replacement, mechanically stabilized backfill, granular base, asphalt pavement, traffic control, and erosion control measures.

Reference: Jeff McCann

Phone: (573) 886-4480



**City of Bethany, MO  
South 30<sup>th</sup> Street Extension**

This project included 2600 LF of new concrete street with curb & gutter, storm water piping, and sanitary sewer extension. Project Cost: \$1.7 Million

Contact: Jonne Slemons, Mayor

Phone: 660-425-7889





### **Lewis County Airport Authority – Entrance Road Lewistown, MO**

Howe Company was hired to engineer repairs to and chip - seal the entrance road. Project Cost: \$31,589.

Contact: Jesse Rogers

Phone: (660) 216-4801



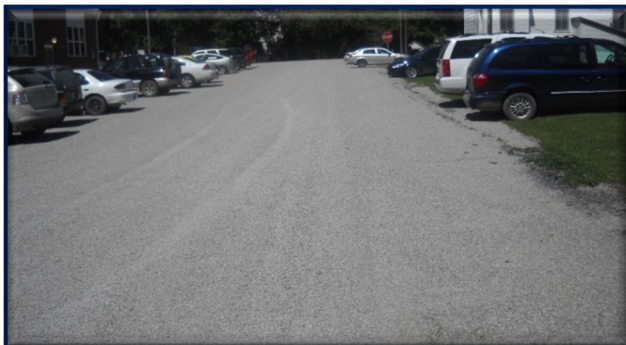
### **Lewis County Airport Authority – Apron & Taxiways Lewistown, MO**

Howe Company was hired to help the Lewis County Airport Authority with a project to crack seal and seal coat the airport apron and taxiways and service road.

Project Cost: \$46,502.

Contact: Jesse Rogers

Phone: (660) 216-4801



### **Jamesport CDBG Grant Street Improvements Jamesport, MO**

Howe Company, LLC assisted the City of Jamesport with a plan for street and drainage improvements including new culverts, grading, and chip sealing the streets.

Contact: Jack Turner, Mayor

Phone: (660) 684-6111



### **Daviess County – Quick Avenue**

This project consisted the overlay of 1.5 miles of Quick Avenue from a manufacturing facility to its intersection with State Route V with 2 inches of hot mix asphalt.

Contact: David Cox, Associate Commissioner

Phone: (660) 663-2641



### **Sweet Springs R7 School District Sweet Springs, MO**

This project consisted of storm water piping, reinforced concrete retaining wall, aggregate base, concrete pavement for parking and street entrance, and parking stall striping.

Construction cost was \$272,550.

Contact: Lori Price, Superintendent

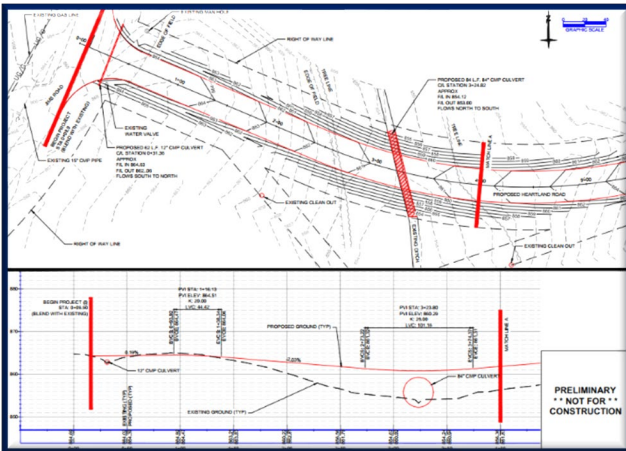
Phone: (660) 335-4860



### **South Harrison R-II School District Bethany, MO**

This project consisted of storm water piping, aggregate base, concrete pavement for parking, street entrance, and bus road. Parking stall striping was also completed. Construction cost was \$800,373.

Contact: Dennis Eastin, Superintendent  
Phone: (660)-425-8044



### **Macon County Economic Development Heartland Road Macon, MO**

This project consisted of Heartland Road including culvert, embankment, and aggregate surfacing design with provisions for future concrete pavement for Heartland Road.

Contact: Sue Goulder, Director  
Phone: (660)-385-5627