

GREAT RIVER ENGINEERING

Company Brochure



WE ARE A COMPANY BUILT ON THE LPA PROGRAM

One of the very first projects that **Great River Engineering** ever completed was an off system bridge replacement for Polk County, Missouri using the BRO system. This was in the late 1990's and served as the foundation for our entire firm. Prior to GRE's existence our founder Spencer Jones worked in Northern Missouri completing BRO projects in the mid 1990's. Over the 25 years we have served the state we have completed over one hundred BRO, TEAP, STP, and TAP Projects. We have worked in all districts in the state and are familiar with the LPA process.

While most firms see the local public agencies as a secondary client behind large DOT or State Agencies we see our LPA clients as our most vital. We were built on serving LPA's first and ensuring they get the level of attention they deserve. We are proud to say that we have worked in over half the counties of the state, and for many of the cities within those counties. The ADA sidewalks serve as vital connectors for both the disabled and young children to be able to enjoy their community in a safe manner. Our rural bridges ensure that agricultural transportation needs are met. We understand the challenges that LPA's face and look forward to helping them to deliver successful projects to their citizens.



FEDERAL FUNDING

Great River Engineering is a company that is a leader in the **Local Public Agency Program**. We complete as many or more of these projects than any other firm in the state. These projects require strict adherence to federal law and following the federal project guidelines. GRE has delivered on these projects over and over again. We are confident we can deliver for any LPA. Through our growth we have worked to expand our capacity and capabilities. This includes hiring PTOE's, MoDOT experienced staff, and both MircoStation and AutoCAD technicians.



WORKFORCE DIVERSITY

Great River Engineering (GRE) is committed to workforce diversity. With a staff size of approximately 56 members across our five offices, we are proud to say that we have minorities in leading roles. Embracing diversity and finding a qualified staff from diverse backgrounds has helped us build a better company. Our hiring process includes review of the applicant by a diverse group of fellow staff members and often face to face interviews with not just one manager, but the entire diverse work team. This approach has yielded a more diverse and talented staff than ever before with multiple major roles being filled by minorities within our firm. We make an effort to ensure a diverse and talented management team.



Great River Engineering is pre-qualified with the Missouri Department of Transportation.

GREAT RIVER ENGINEERING

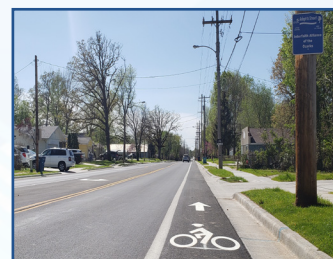
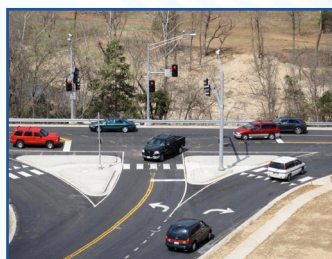
Company Brochure

2

PAST PERFORMANCE

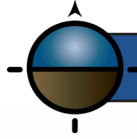
PROJECTS	ROADWAY	TRAFFIC	BRIDGE	CONSTRUCTION INSPECTION	SURVEY	Environmental	Sidewalk & Trails
Christian County Riverside Bridge BRO-B022(09) *Over .5 miles roadway	X		X	X	X	X	X
City of Ozark 3rd & McCracken (Gov. cost share)	X	X	X	X	X	X	X
City of Marshfield Roundabout (MoDOT J7P3187H)	X	X		X	X	X	
Greene County Kansas Extension (STP-5909(802))			X		X		
Polk County Bridge 1830020			X	X	X	X	
Webster County Gourly Bridge Replacement			X	X	X	X	
Greene County Bridge NO. 07600701			X		X	X	
Pulaski County Devil's Elbow Bridge Rehab			X	X	X	X	
Benton Co. Arkansas War Eagle Truss Rehab			X	X	X	X	
Route 86 Ridgedale Improvements (developer permitted)	X	X		X	X	X	
Clay County BRO-B024(025) Bridge Replacement			X	X	X	X	
Indian Point Road - Silver Dollar City	X	X	X	X	X	X	
National & Seminole Intersection Improvements (Springfield MO)	X	X			X	X	
St. Charles County Duello Road Phase I	X	X			X	X	X
Johnson County Spirit Trail				X	X	X	X
Montrose Lake Bridge Rehabilitation (Henry County, MO)			X	X	X	X	
Jefferson Avenue Footbridge Rehabilitation (Springfield, MO)			X		X	X	X
Cedar County Bridge 28400021			X	X	X	X	
Crawford County Bridge No. 06700001			X	X	X	X	
Urich TAPs (Multiples)				X	X	X	X
Appleton City TAPs (Multiples)				X	X	X	X

PROJECT PHOTOS



GREAT RIVER ENGINEERING

Company Brochure



QUALIFICATIONS

OVER 500 MILLION IN INFRASTRUCTURE DESIGNED!



Great River Offers Great Services



Streets, Highways, and Traffic



Bridges



Streambank Stabilization



Aquatic Organism Passage (AOP)



Flood Control



Stormwater



Drinking Water



Wastewater Collection and Treatment



Sidewalks, Trails, and Streetscapes



Surveying



Site Design



Construction Inspection



Landscape Architecture



GIS Mapping

GREAT RIVER ENGINEERING

Company Brochure

GENERAL EXPERIENCE

As covered in our letters of interest we have a proven track record of delivering successful projects as those we are submitting on. The table to the right shows our combined experience with each work category along with the average years of experience for each work group. Typically, our transportation team handles both roadway design and traffic engineering. We have offered all of these services as a company for over 25 years and most of them since the start of GRE. Our first project was a bridge using the BRO program for Polk County, Missouri.

SERVICE	TEAM EXPERIENCE COMBINED	AVERAGE TEAM MEMBER EXP.
Transportation	173 Yrs.	19 Yrs.
Bridge	131 Yrs.	13 Yrs.
Construction Insp.	61 Yrs.	15 Yrs.
Survey	146 Yrs.	21 Yrs.
Trails & Sidewalks	165 Yrs.	17 Yrs.
Environmental	151 Yrs.	22 Yrs.

ACCESSIBILITY

Typically in our field, the engineers are known for a lack of communication. It is our goal to be an extension of yourself and one of the major components of that is our commitment to communication. We know that no news is never good news. On our projects we use a clearly defined process that includes giving clients a project status report in written form, as well as at least bi-weekly phone calls to ensure our clients are aware of what the status of their project is. Additionally, you will have the direct mobile phone number of your project manager, team leader, and at least one firm principal. Should you have any questions at any time, day, night, over the weekend we encourage you to call and we will get you the answers you are looking for.

417.860.4909
Jason Sivils, PE
Springfield

816.436.4440
Lindsey Chaffin, PE
Kansas City

314.312.0066
Jeff Banderet, PE
St. Louis

573.606.4674
Michael Teel, PE
Jefferson City

REFERENCES

We encourage you to call our references and see what our clients think of our quality of work and accessibility.

Brandon Williams
Taney County
417.546.7204

Shannon Hancock
Polk County
417.326.2922

Rick Artman, PE
Greene County Hwy.
417.831.3591

Chris Bostic, PE
St. Charles County
636.949.7900

Bob Heim, PE
Platte County
816.858.2223

Terri Griffin
Clay County Hwy.
816.407.3300

Kyle Bruemmer, PE
City of Fulton
573.592.3161

Bill Allen
Pike County
573.324.2412