



MEMORANDUM

Missouri Department of Transportation Right of Way Southwest District

TO: Stacy Reese
Assistant District Engineer

FROM: Andrew Ellsworth
Southwest District Right of Way Manager

DATE: January 19, 2023

SUBJECT: ADA Determination
Barton County, Route W – Iantha, Mo

Per the guidance provided in the EPG, section 236.4.4, included with this memo please find documentation pertaining to the ownership of the right of way for the above-mentioned county, city, routes, and projects. The district right of way staff has conducted a thorough ownership and ADA responsibility determination, including researching roadway plans, deeds, dedicated subdivision plats, CRSR's, maintenance/urban/municipal agreements, and other documentation defining the ownership and responsibility for the ADA improvements for the locations identified on the attached maps.

All the MHTC ownership deeds and plan sheets were researched. Also, platted subdivisions in the City of Iantha were included in our research. Deeds were found along Routes W that revealed partial ownership in the Missouri Highways and Transportation Commission (MHTC). The CRSR, Urban and maintenance agreement records were also researched. There were no agreements and/or other documentation that were found that covered some of the routes in the City of Iantha.

Our findings and determinations are listed and explained below.

ROUTE W – (10th Road south to South Railroad RW line (Station 3+57))

Both Sides of Route W (Pine Street) - From 10th Road to South Railroad RW line (Station 3+57)

Ownership for Route W (Pine Street) through the Town of Iantha appears to be vested to the Town of Iantha by Original Plat of Iantha. Town of Iantha **holds ownership to the right of way by dedicated subdivision plat through the section of Route W described above and would have full ADA compliance responsibility for the sidewalks in this section.** The width of right of way in this section is 80 feet along Pine Street. There appears to be sidewalk on the east side of the roadway along Pine Street from 9th Road Street to 8th Road. MHTC only has responsibility for the driving lanes and/or s (curb cuts, crosswalk connections, etc.) that connect to the roadway that MHTC maintains.

East side of Route W from North City Limits to 10th Road and West side of Route W south of Railroad RW to Station 22+47)

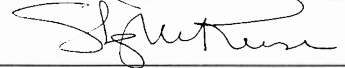
Route W from North City Limits at Station 329+65 to 340+00 (10th Road) and from Station 3+57 at south RW line for the Railroad thence south to Station 22+47 is owned by the MHTC. The right of way was acquired under project: W_Sec. 1 in 1936. The right of way in these areas is 60 feet wide. The latest plans and deeds are included in the supporting SharePoint folder that shows the right of way widths. **MHTC holds ownership to the right of way by deeds through the above-described sections of Route W and would have full ADA compliance responsibility for the sidewalks in this section.** There does not appear to be sidewalks located in the section owned by MHTC. MHTC has responsibility for any ADA sidewalk requirements and/or barriers (curb cuts, crosswalk connections, etc.) that connect to the roadway that MHTC maintains.

Concurrence of above determination based on these findings.



Steve Shelton - Southwest RW Manager

Date: 1.25.2023



Stacy Reese – Assistant District Engineer

Date: January 26, 2023

ADA Ownership Map
Town of Iantha

Route W - 340+00 at 10th
Road to S RR RW line at
Sta. 3+57 - Owned by Town
of Iantha by Plat - 80' wide

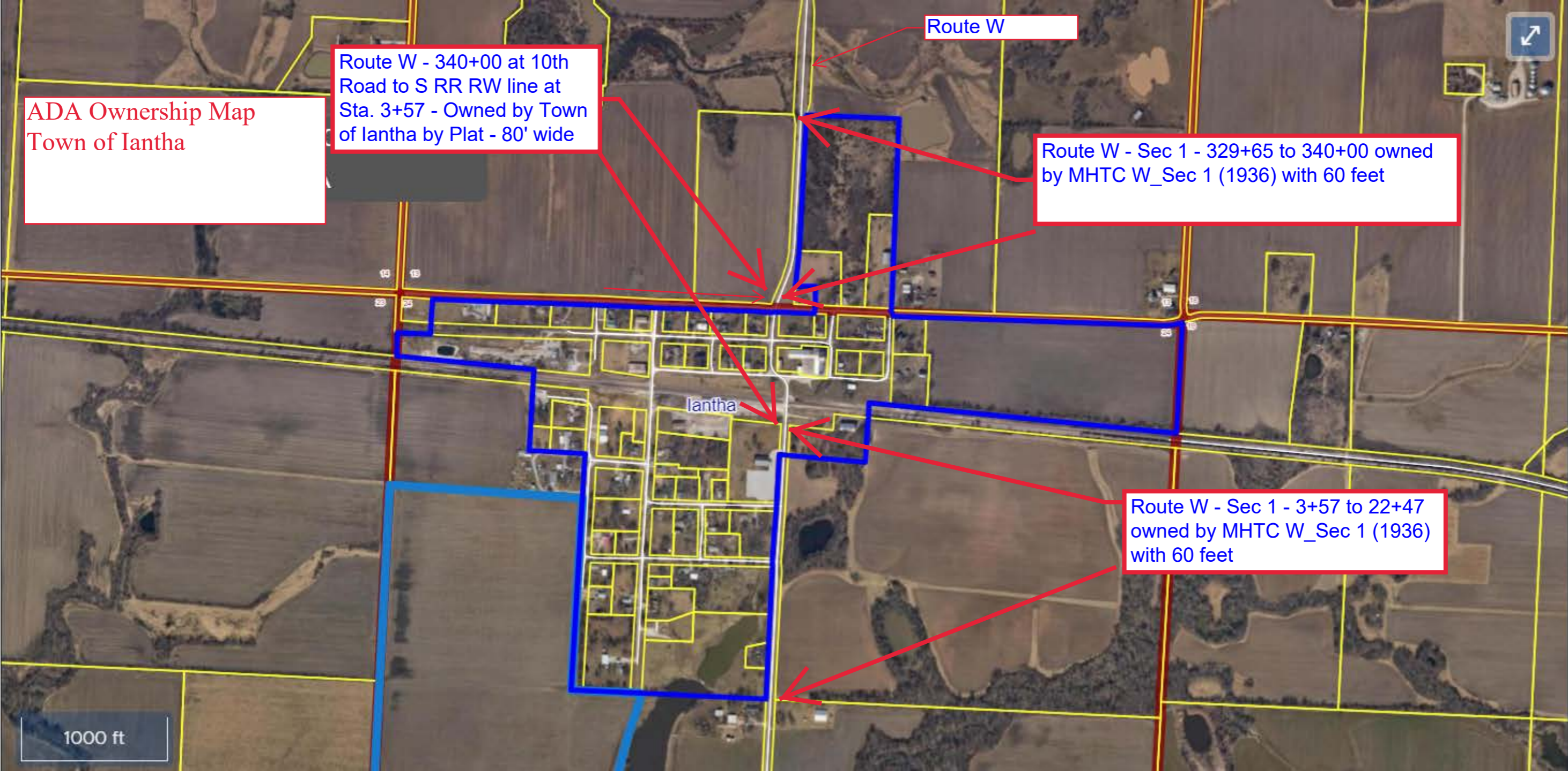
Route W

Route W - Sec 1 - 329+65 to 340+00 owned
by MHTC W_Sec 1 (1936) with 60 feet

Route W - Sec 1 - 3+57 to 22+47
owned by MHTC W_Sec 1 (1936)
with 60 feet

1000 ft

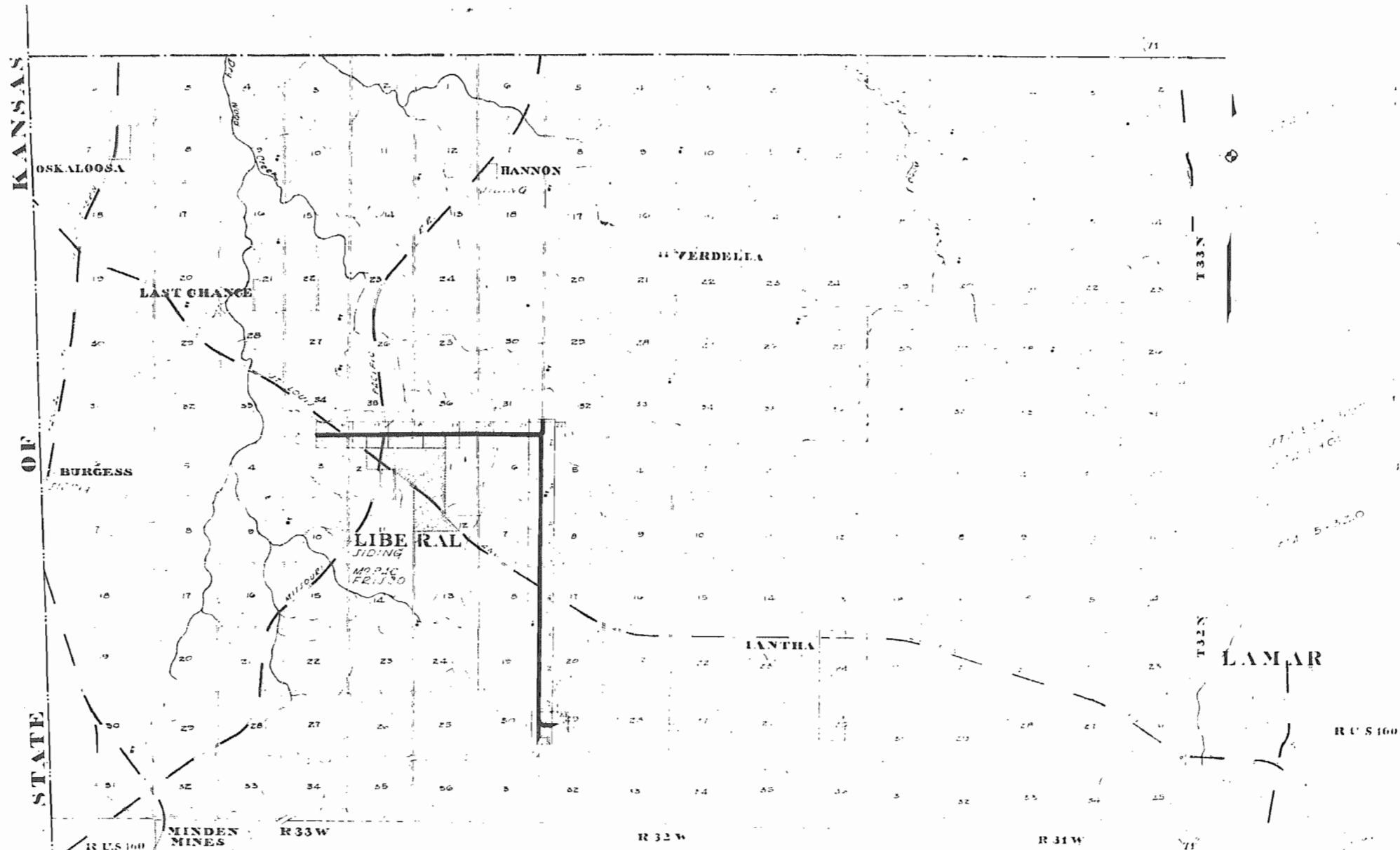
Iantha



**MISSOURI
STATE HIGHWAY COMMISSION
PLAN AND PROFILE
OF PROPOSED
STATE ROAD
FEDERAL AID PROJECT
BARTON COUNTY**

PLAN SCALE 1" = 1 MILE
PROFILE SCALE 1" = 10 FEET
CROSS SECTION 1" = 20 FEET

MO. STATE HIGHWAY COMMISSION
DISTRICT NO. 5
7 BARTON



CONVENTIONAL SIGNS

STATE AND NATIONAL LINE	1" = 1" ELEVATION
COUNTY LINE	2" = 1" ELEVATION
CITY, VILLAGE OR BOROUGH	3" = 1" ELEVATION
TOWNSHIP LINE	4" = 1" ELEVATION
SECTION LINE	5" = 1" ELEVATION
RAILROAD	6" = 1" ELEVATION
UNFENCED PROPERTY	7" = 1" ELEVATION
RIGHT OF WAY LINE	8" = 1" ELEVATION
TRAVELED WAY	9" = 1" ELEVATION
RAILROADS	10" = 1" ELEVATION
RETAINING WALL	11" = 1" ELEVATION
BASIS OF SURVEY LINE	12" = 1" ELEVATION
1" = 1" ELEVATION	13" = 1" ELEVATION
2" = 1" ELEVATION	14" = 1" ELEVATION
3" = 1" ELEVATION	15" = 1" ELEVATION
4" = 1" ELEVATION	16" = 1" ELEVATION
5" = 1" ELEVATION	17" = 1" ELEVATION
6" = 1" ELEVATION	18" = 1" ELEVATION
7" = 1" ELEVATION	19" = 1" ELEVATION
8" = 1" ELEVATION	20" = 1" ELEVATION
9" = 1" ELEVATION	21" = 1" ELEVATION
10" = 1" ELEVATION	22" = 1" ELEVATION
11" = 1" ELEVATION	23" = 1" ELEVATION
12" = 1" ELEVATION	24" = 1" ELEVATION
13" = 1" ELEVATION	25" = 1" ELEVATION
14" = 1" ELEVATION	26" = 1" ELEVATION
15" = 1" ELEVATION	27" = 1" ELEVATION
16" = 1" ELEVATION	28" = 1" ELEVATION
17" = 1" ELEVATION	29" = 1" ELEVATION
18" = 1" ELEVATION	30" = 1" ELEVATION
19" = 1" ELEVATION	31" = 1" ELEVATION
20" = 1" ELEVATION	32" = 1" ELEVATION
21" = 1" ELEVATION	33" = 1" ELEVATION
22" = 1" ELEVATION	34" = 1" ELEVATION
23" = 1" ELEVATION	35" = 1" ELEVATION
24" = 1" ELEVATION	36" = 1" ELEVATION
25" = 1" ELEVATION	37" = 1" ELEVATION
26" = 1" ELEVATION	38" = 1" ELEVATION
27" = 1" ELEVATION	39" = 1" ELEVATION
28" = 1" ELEVATION	40" = 1" ELEVATION
29" = 1" ELEVATION	41" = 1" ELEVATION
30" = 1" ELEVATION	42" = 1" ELEVATION
31" = 1" ELEVATION	43" = 1" ELEVATION
32" = 1" ELEVATION	44" = 1" ELEVATION
33" = 1" ELEVATION	45" = 1" ELEVATION
34" = 1" ELEVATION	46" = 1" ELEVATION
35" = 1" ELEVATION	47" = 1" ELEVATION
36" = 1" ELEVATION	48" = 1" ELEVATION
37" = 1" ELEVATION	49" = 1" ELEVATION
38" = 1" ELEVATION	50" = 1" ELEVATION
39" = 1" ELEVATION	51" = 1" ELEVATION
40" = 1" ELEVATION	52" = 1" ELEVATION
41" = 1" ELEVATION	53" = 1" ELEVATION
42" = 1" ELEVATION	54" = 1" ELEVATION
43" = 1" ELEVATION	55" = 1" ELEVATION
44" = 1" ELEVATION	56" = 1" ELEVATION
45" = 1" ELEVATION	57" = 1" ELEVATION
46" = 1" ELEVATION	58" = 1" ELEVATION
47" = 1" ELEVATION	59" = 1" ELEVATION
48" = 1" ELEVATION	60" = 1" ELEVATION
49" = 1" ELEVATION	61" = 1" ELEVATION
50" = 1" ELEVATION	62" = 1" ELEVATION
51" = 1" ELEVATION	63" = 1" ELEVATION
52" = 1" ELEVATION	64" = 1" ELEVATION
53" = 1" ELEVATION	65" = 1" ELEVATION
54" = 1" ELEVATION	66" = 1" ELEVATION
55" = 1" ELEVATION	67" = 1" ELEVATION
56" = 1" ELEVATION	68" = 1" ELEVATION
57" = 1" ELEVATION	69" = 1" ELEVATION
58" = 1" ELEVATION	70" = 1" ELEVATION
59" = 1" ELEVATION	71" = 1" ELEVATION
60" = 1" ELEVATION	72" = 1" ELEVATION
61" = 1" ELEVATION	73" = 1" ELEVATION
62" = 1" ELEVATION	74" = 1" ELEVATION
63" = 1" ELEVATION	75" = 1" ELEVATION
64" = 1" ELEVATION	76" = 1" ELEVATION
65" = 1" ELEVATION	77" = 1" ELEVATION
66" = 1" ELEVATION	78" = 1" ELEVATION
67" = 1" ELEVATION	79" = 1" ELEVATION
68" = 1" ELEVATION	80" = 1" ELEVATION
69" = 1" ELEVATION	81" = 1" ELEVATION
70" = 1" ELEVATION	82" = 1" ELEVATION
71" = 1" ELEVATION	83" = 1" ELEVATION
72" = 1" ELEVATION	84" = 1" ELEVATION
73" = 1" ELEVATION	85" = 1" ELEVATION
74" = 1" ELEVATION	86" = 1" ELEVATION
75" = 1" ELEVATION	87" = 1" ELEVATION
76" = 1" ELEVATION	88" = 1" ELEVATION
77" = 1" ELEVATION	89" = 1" ELEVATION
78" = 1" ELEVATION	90" = 1" ELEVATION
79" = 1" ELEVATION	91" = 1" ELEVATION
80" = 1" ELEVATION	92" = 1" ELEVATION
81" = 1" ELEVATION	93" = 1" ELEVATION
82" = 1" ELEVATION	94" = 1" ELEVATION
83" = 1" ELEVATION	95" = 1" ELEVATION
84" = 1" ELEVATION	96" = 1" ELEVATION
85" = 1" ELEVATION	97" = 1" ELEVATION
86" = 1" ELEVATION	98" = 1" ELEVATION
87" = 1" ELEVATION	99" = 1" ELEVATION
88" = 1" ELEVATION	100" = 1" ELEVATION

SCALE 1" = 1 MILE

SUBMITTED [REDACTED]
 CHIEF ENGINEER MO. STATE HIGHWAY COMMISSION
 RECOMMENDED FOR APPROVAL
 [REDACTED]
 DISTRICT ENGINEER - DISTRICT NO. 5
 RECOMMENDED FOR APPROVAL
 [REDACTED]
 CHIEF ENGINEER BUREAU PUBLIC ROADS
 APPROVED [REDACTED]
 DIRECTOR BUREAU OF PUBLIC ROADS

SYD. PIPE CULVERTS

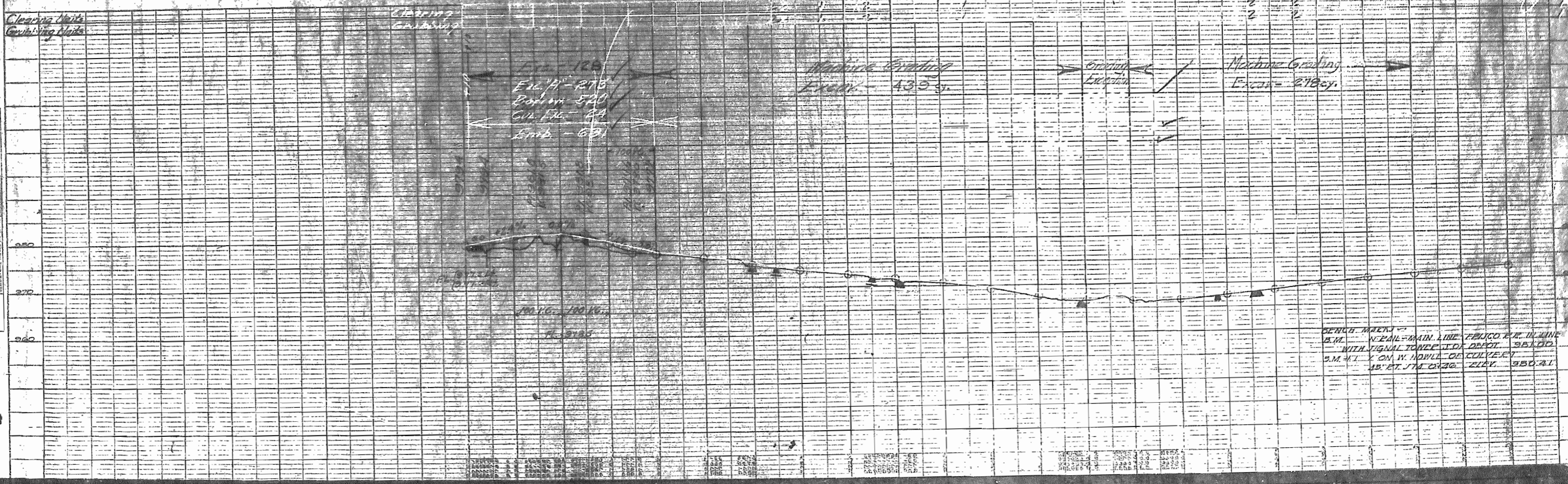
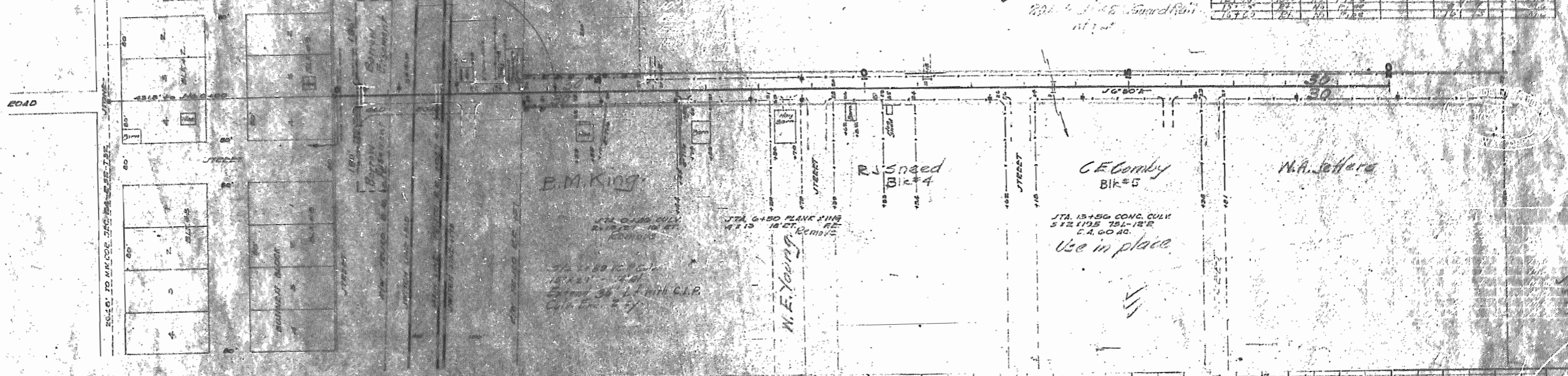
STATION	18"	24"	30"	36"	CONCRETE	CONC.	REMARKS
0140							R. J. Sneed
0142							

F. E. & S. R. APPROACHES

STATION	SID	15"	18"	24"	EXC.	EMB.	NO.	NO. IN
0125	0516	16	16	16				
2150	01	16	16	16				
3100	01	18	18	18				
6150	01	18	18	18				
8150	01	18	18	18				
9150	01	18	18	18				
12150	01	18	18	18				
15150	01	18	18	18				
16150	01	18	18	18				

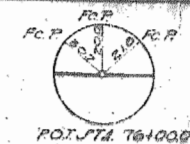
10th 9th 8th

IANTHA



PLAN
NOT TO SCALE

PROFILE
NOT TO SCALE



T. BARTON, JR.

Sta 57+55 Curve
20' dia Rm. Standard
R/L Lt

Lamar Trust Co.

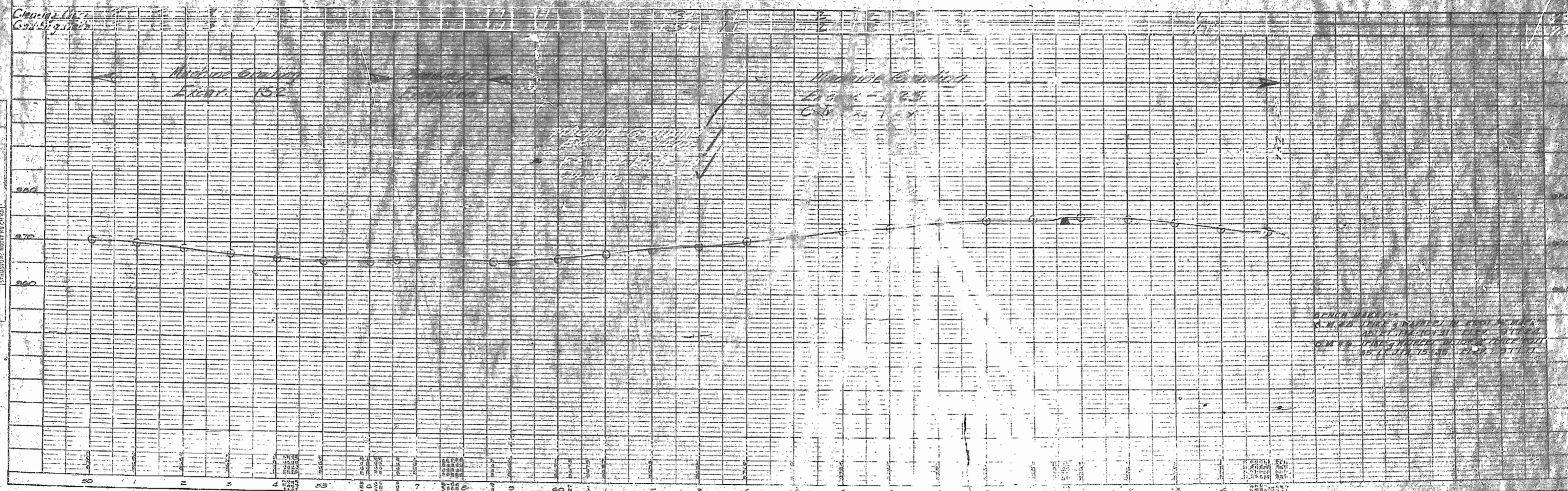
C. J. Wilson

JTA 57+55 CONC CULV
15" x 20" 10' LT
2.1104C
Use in place

JTA 74+00 CONC PIPE
15" x 20" 10' LT
Extend 6' RT with C.P.
Culv. Ex. 1.44

STATION APPROACHES

STATION	15"	18"	24"	EXD.	END.	CON.	WGL. IN
60.35	60.24	60.21	60.15		7	12	130

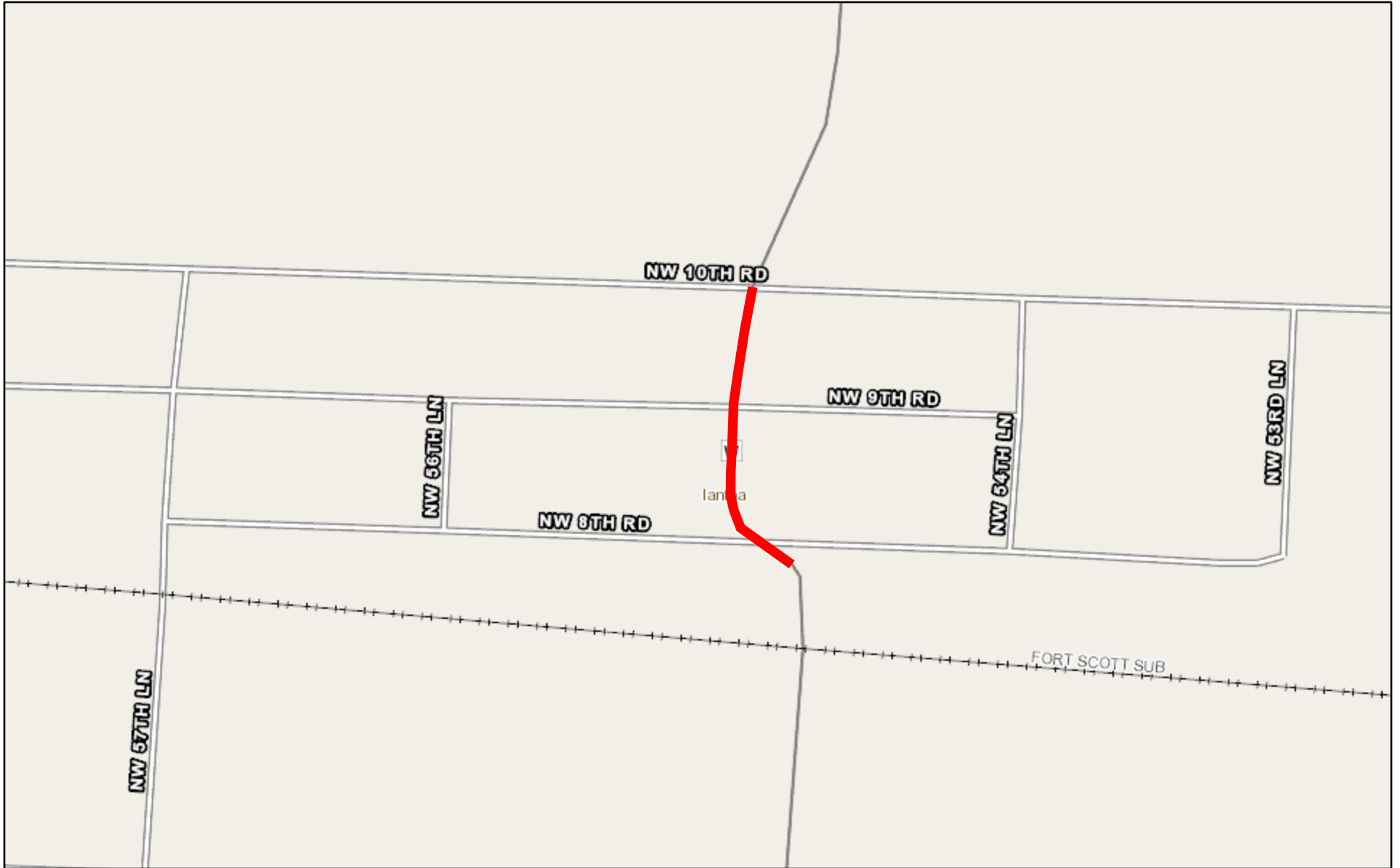


BEFORE BAKING
6" x 6" DIMS. IN 10' x 10' FOOT SQUARE
AS SHOWN IN PLAN
6" x 6" DIMS. IN 10' x 10' FOOT SQUARE
AS SHOWN IN PLAN

PLAN
DATE
BY

PROFILE
DATE
BY

J7S3531 - City of lantha



February 5, 2023

— = PROJECT LIMITS (Route W)

