

**ADDENDUM NO. 4
TO
CONTRACT DOCUMENTS, SPECIFICATIONS AND PLANS
FOR IMPROVEMENTS TO THE
ST. JOSEPH ROSECRANS MEMORIAL AIRPORT
ST. JOSEPH, MISSOURI
MODOT PROJECT NO. 22-012A-1**

To All Bidders: You are requested to make all changes and/or additions contained in this addendum to the Bidding Documents. Failure to acknowledge this Addendum in Proposal shall result in rejection of bid. Bidders are informed that the above referenced Questions with Corresponding Answers, Contract Documents, Specifications, and Plans are modified as follows as of December 5, 2022.

CONTRACT DOCUMENTS/SPECIFICATIONS/PLANS

Contract Documents:

1. Contract Documents

Revision: Updated bid due date to 1:00 PM Central Time **December 16th**

Added final questions will be received until COB **December 8th**.

Specifications:

2. Specifications

Revision: Added City of St. Joseph Asphalt Mix Design Requirements.

Plans:

3. Plans

Sheet A-601 Door Schedule, Types, and Details

Revision: Door 011A hardware schedule updated. Door manufacturer list updated.

Questions:

4. Is Aluflam appropriate for Aluminum Openings W13 & W14 ?
 - a) Aluflam is acceptable.

5. At the interior vestibule openings that are non-locking will the Kawneer 1" round push pull be acceptable?
 - a) Yes these are acceptable

6. Will Kawneer standard heavy duty full length gear hinge in lieu of the butts called out be acceptable?
 - a) Yes

7. Is Door Pair 011A an overhead door hardware set?
 - a) The door Hardware Schedule has been updated per the plans.

8. The specifications that are provided for the asphalt are just general specifications. They do not indicate what specific type of mix that is required. What specific mix type is being required for base and surface mixes, including binder type?
 - a) Pavement requirements are based on the City of St. Joseph 2022 Resurfacing Program requirements. Refer to Section 3 for mix design per the attached specification. This paving mix is to be used for all asphalt in Phase 1.

9. We need the WBE-MBE Disadvantage verification office's contact, email address and phone # soon so that all qualifying subcontractors and material suppliers can verify that they are registered with the State of MO
 - a) Please refer to the contact in section 4-32; DBE Administration Missy Stuedle. Please reach out to Missy and she will assign it to the individual for that area.
 - b) Furthermore, you can also go to the MRCC directory [MRCC Directory | Missouri Department of Transportation \(modot.org\)](#);
 - c) Also, this is the link for Minority & Women Owned Businesses [Firm Search - State of Missouri \(mo.gov\)](#).

10. Can we make a trip around the airstrip to the Electrical vault location anytime following your route or do we need to make arrangements?
 - a) Please contact the airport to make arrangements to tour the vault location.
11. Who is the contact at the Café so we can get in and check out what equipment is salvaged and relocated? Is this included in the 300 Calendar days?
 - a) Please contact the airport to tour the café equipment.
 - b) This scope is included in the 300 calendar days. It is expected the existing kitchen equipment move will be done as the final part of the scope and that the contractor will coordinate with and notify (with assistance in coordination from the A&E / RPR) the current kitchen operator. It is anticipated the existing kitchen equipment move and install will take one calendar week.
12. For barriers on the air side of the Terminal Building; can we use temporary chain link fence instead of jersey barriers for FOD control , or can we use both for FOD control if we have to?
 - a) The contractor can choose the exact type of barrier (chain link with screen, jersey barrier, etc) for FOD Control , but ensuring the barrier is working for total FOD Control is contractor responsibility
13. How can a contractor accommodate for long lead time items that could possibly be over 300 days.
 - a) The contractor shall make a good faith effort to acquire materials in a timely manner to meet the project schedule. However, Jviation and the airport understand that supply chain issues have caused extremely long lead times for some materials, and it is likely that some items will not be able to be acquired in a timeframe that meets the project schedule. Where feasible, the contractor may suggest alternate products from those specified which have shorter lead times. Approval of all product substitutions will be subject to airport and Jviation review.
 - b) It is not Jviation or the airport's intent to assess liquidated damages to the contractor as a result long lead times which are out of the contractor's control.
 - c) Within 2 weeks of issuing notice of award, the contractor will be expected to provide a list of long lead items which may affect the construction schedule. This list is expected to be as complete as practical given the lead time information available at that time. Jviation and the airport will work with the contractor to determine if modifications to the project schedule are needed due to long lead items. These modifications may include delaying the notice to proceed or stopping the day count during construction to wait for materials to arrive.
 - d) Throughout construction, the contractor shall provide updates on any long lead items which will effect the project schedule.

REQUEST FOR BIDS/INVITATION FOR BIDS

Rosecrans Memorial Airport
St. Joseph, MO
State Block Grant Project No. 22-012A-1

Sealed bids will be received until 1:00 p.m., Friday, December 16, 2022, and then publicly opened and read by the City of St. Joseph at Purchasing, Room 201, 1100 Frederick Ave, St. Joseph, MO 64503. Final questions will be received until COB Thursday, Dec 8th, 2022.

Schedule I - Terminal Building and Required Site Work
Schedule II - Electrical Vault and Required Site Work

Contract Documents. The complete set of Specifications and Contract Documents can be downloaded from Jviation, Inc.'s bid site (<http://bid.jviation.com>), beginning on November 16, 2022. In order to submit a responsive bid as a Prime Contractor and to receive all necessary addendum(s) for this project, you must be on the Planholder's List. To view all planholder documents (contract documents, plans and addendums) you must fill out the online form located at (<https://jviation.com/bid-request>). By filling out and submitting this form, you agree to be publicly listed on the bid site with your contact information as a planholder for all projects requested. **It is the planholder's responsibility to review the site for addendums and changes before submitting their proposal. This includes review for environmental changes. Environmental changes during construction could take up to four weeks for approval.** For additional information, please contact us via email at bidinfo@Woolpert.com.

*Note that contractors will NOT be automatically added to new projects. You will need to re-submit the online form for access to new projects. Once granted access, additional projects will use your same login credentials. **Note:** Plan ahead when submitting the online request form and allow up to 2 business days for approval and access to projects.

Pre-Bid Conference. The pre-bid conference for this project will be held on Wednesday, November 30th at 2:00 p.m., at Rosecrans Memorial Airport. All bidders are required to examine the site to become familiar with all site conditions.

Bid Conditions. The bidder is required to provide all information as required within the Contract Documents. The bidder is required to bid on all items of every schedule or as otherwise detailed in the Instructions to Bidders.

Each proposal must be accompanied by a bid guaranty in the amount of five (5) percent of the total amount of the bid. The bid guaranty may be by certified check or bid bond made payable to City of St. Joseph.

Bids may be held by City of St. Joseph for a period not to exceed 120 calendar days from the date of the bid opening for the purpose of evaluating bids prior to award of contract.

All questions regarding the bid are to be directed to Kevin Costello with Jviation, a Woolpert Company at (720) 279-3773 or email kevin.costello@woolpert.com.

Construction for this project is expected to take 300 calendar day(s).

In accordance with the Davis-Bacon Act, and the Missouri Prevailing Wage Law, the Contractor will be required to comply with the wage and labor requirements and to pay minimum wages in accordance with the schedule of wage rates established by the United States Department of Labor and the Missouri Division of Labor Standards, respectively. The highest rate between the two (Federal and State) for each job classification shall be considered the prevailing wage.

SECTION 1

NOTICE TO BIDDERS

Rosecrans Memorial Airport
St. Joseph, MO
State Block Grant Project No. 22-012A-1

Sealed bids subject to the conditions and provisions presented herein will be received until 1:00 p.m., Friday, December 16, 2022, and then publicly opened and read at Purchasing, Room 201, 1100 Frederick Ave, St. Joseph, MO 64503, for furnishing all labor, materials, equipment and performing all work necessary to

Schedule I - Terminal Building and Required Site Work

Schedule II - Electrical Vault and Required Site Work

Contract Documents. The complete set of Specifications and Contract Documents can be downloaded from Jviation, Inc.'s bid site (<http://bid.jviation.com>), beginning on November 16, 2022. In order to submit a responsive bid as a Prime Contractor and to receive all necessary addendum(s) for this project, you must be on the Planholder's List. To view all planholder documents (contract documents, plans and addendums) you must fill out the online form located at (<https://jviation.com/bid-request>). By filling out and submitting this form, you agree to be publicly listed on the bid site with your contact information as a planholder for all projects requested. **It is the planholder's responsibility to review the site for addendums and changes before submitting their proposal. This includes review for environmental changes. Environmental changes during construction could take up to four weeks for approval.** For additional information, please contact us via email at bidinfo@Woolpert.com.

*Note that contractors will NOT be automatically added to new projects. You will need to re-submit the online form for access to new projects. Once granted access, additional projects will use your same login credentials. **Note:** Plan ahead when submitting the online request form and allow up to 2 business days for approval and access to projects.

Pre-Bid Conference. The pre-bid conference for this project will be held on Wednesday, November 30 at 2:00 p.m., at Rosecrans Memorial Airport. All bidders are required to examine the site to become familiar with all site conditions.

Contract Work Items. This project will involve the following work items and estimated quantities. Prospective bidders are hereby advised that the quantities indicated herein are approximate and are subject to change.

Contract Time. The owner has established a contract perform time of 300 calendar day(s) from the date of the Notice-to-Proceed. All project work shall be substantially completed within the stated timeframe. This project is subject to liquidated damages as prescribed in the project manual.

Bid Security. No bid will be considered unless accompanied by a certified check or cashier's check on any bank or trust company insured by the Federal Deposit Insurance Corporation, payable to the Owner, for not less than five (5) percent of the total amount of the bid, or by a bid bond secured by an approved surety or sureties, payable to the City of St. Joseph, for not less than five (5) percent of the total amount of the bid.

Bonding Requirements. The successful bidder will be required to furnish separate performance and payment bonds each in an amount equal to 100% of the contract price at the time of contract execution.

Award of Contract. The Owner intends to award a contract resulting from this solicitation to the lowest, responsive, responsible bidder, whose offer, conforming to the solicitation, will be most advantageous to, and in the best interest of, the Owner, cost or price and other factors considered.

SECTION 2

INSTRUCTIONS TO BIDDERS

This section contains excerpts of the bidding requirements from Section 20 of the General Provisions. The bidder's attention is directed to Section 20 for complete details.

1. THE EXECUTED PROPOSAL FORM MUST BE SUBMITTED WITH EACH PAGE FROM SECTION B-1 THROUGH B-XX. EACH FORM MUST BE COMPLETELY FILLED OUT.

2. The apparent low bidder shall submit "evidence of competency" and "evidence of financial responsibility" to the owner with the bid proposal in accordance with Section 20-02 of the General Provisions. In addition, the resumes of all key personnel shall be provided with the bid proposal detailing experience on similar airfield construction projects.

3. Each bidder shall certify in the Proposal Form at the time of bid submittal that they acknowledge receipt of all issued addenda.

4. No bid will be considered unless accompanied by a certified check or cashier's check on any bank or trust company insured by the Federal Deposit Insurance Corporation, payable to the owner, for not less than five (5) percent of the amount of the bid, or by a bid bond secured by an approved surety or sureties (licensed to conduct surety business in the state of Missouri), payable to the owner, for not less than five (5) percent of the amount of the bid.

5. Proposals shall be sent to arrive at the time and date specified in Section 1, Notice to Bidders. Proposals received after the specified time and date will not receive consideration and will be returned unopened. Prior to submittal, the proposal shall be placed in a sealed opaque envelope and addressed to:

Purchasing, Room 201, 1100 Frederick Ave, St. Joseph, MO 64503

The upper left hand corner of the envelope should be marked as follows:

Sealed Bid Proposal

Bid of NAME OF BIDDER

For construction improvements at Rosecrans Memorial

State Block Grant Project No.: 22-012A-1

To be opened at: 1:00 p.m., Friday, December 16th, 2022

For a modification to a previously submitted proposal, insert "Modification to Proposal" in place of "Sealed Bid Proposal".

6. The Owner reserves the right to reject any or all bids, as determined to be in the best interest of the Owner. Causes for rejection of proposals include but are not limited to:

- Submittal of more than one proposal from the same partnership, firm or corporation;
- Failure by Bidder to submit the bid prior to the stated time and date for receipt of bids;
- Failure by Bidder to furnish satisfactory bid guarantee;
- Failure by Bidder to provide all information required of the bid forms;
- Failure by Bidder to comply with the requirements of bid instructions;
- Failure by Bidder to complete the applicable Buy American Certification;
- Failure by the Bidder to demonstrate good faith efforts in obtaining participation by certified DBE firms;
- Determination by the Owner that Bidder is not qualified to accomplish the project work;
- Determination by the Owner that the Bidder has placed conditions on or qualified their proposal;

SECTION 3
ASPHALTIC CONCRETE PAVING, SHOULDERS, AND SURFACING

1.01 GENERAL:

All work of producing and placing asphaltic concrete surface and base for street pavement including curb and gutter, walks and drives, shall conform to Sections 2204 and 2205 of “APWA Specifications” as amended or supplemented herein.

2.01 ASPHALTIC CONCRETE PAVEMENT (MODOT Mix):

- A. Asphaltic concrete surface course shall be in conformance with MODOT Specifications Section 401 – Type BP-1.
- B. Asphaltic concrete surface leveling course shall be in conformance with MODOT Specifications Section 402 – Bituminous Surface Leveling.
- C. Asphaltic concrete pavement shall be in conformance with MODOT Specifications Section 403 – Type SP095.
- D. Asphaltic concrete base course shall be in conformance with MODOT Specifications Section 401 – Plant Mix Bituminous Base.

E. Reclaimed Material for Base Course:

The Contractor may use all new materials or a blend of new materials in combination with reclaimed materials for the asphaltic concrete base. For the base course, up to a maximum of 20% of reclaimed materials may be used. The job mix formula shall fall within the limits of the requirements for the MODOT Plant Mix Bituminous Base. The asphalt cement proposed for use in the mixture shall meet the requirements of 60-70 penetration grade asphalt cement and may be a combination of reclaimed asphalt cement and new asphalt cement. The Contractor shall specify the percentages of reclaimed materials, new aggregates and new asphalt cement required to meet the job mix formula. The Contractor shall identify the reclaimed material as to type of source. Material reclaimed from cutback asphaltic concrete streets or road-oil chip and seal streets will not be acceptable. All materials shall meet the quality requirements of Plant Mix Bituminous Base.

- F. Aggregate Base Course shall be in conformance with MODOT Specifications Section 304 – Type 1 Aggregate Base.
- G. The Contractor shall submit to the Engineer mix designs for approval and submit certifications for the materials that they meet the specifications. The mix designs shall not be over 6 months old.

2.02 TACK COAT

- A. Tack Coat shall be in conformance with Bituminous Material MODOT Specifications Section 1015 – SS1H or RC 70.
- B. Tack coat shall be applied between each layer of new asphaltic concrete, as well as those surfaces specified in the plans, to assure bond unless the previously laid surface is absolutely clean and the Engineer is satisfied that proper bonding will occur without tack coat. Tack coating between layers of new asphaltic concrete may be omitted only with the Engineer's permission.

3.01 ASPHALTIC CONCRETE PLACEMENT:

Amend Section 2205.5 to provide that material delivery for surface course end early enough that all finish rolling may be performed in the daylight unless artificial lighting is approved by the Engineer.

3.02 CONSTRUCTION REQUIREMENTS:

The Contractor shall be responsible for cleaning all dirt, mud and foreign material from the surface and joints ahead of the laying operations, and also prime or tack coat as required.

Amend Section 2205.8 to require that the lift of base course immediately preceding the surface course be laid in a continuous operation and that this lift provide a finished surface that deviates no more than 3/8 inch from the grades shown on the Plans. Such deviations will be allowed only if they are roughly compensating in extent and direction.

3.03 SURFACE REQUIREMENTS:

Tolerances for street pavement construction shall be as follows:

- A. Finished grade of centerline of street pavements shall be within the tolerance range of minus zero (0) to plus three-quarters (3/4) inch with respect to concrete gutter lip.
- B. Finished grade of asphaltic concrete surface shall match concrete gutter lip within the tolerances of 0" to 3/8" above gutter lip.
- C. Total compacted thickness of base and asphaltic concrete surface at any point shall be not less than the thickness shown on the Plans by more than three-eighths (3/8) inch and the average of points checked for total thickness shall not be less than shown on the Plans.

- D. Thickness of asphaltic concrete surface shall be within the tolerance range of minus one-quarter (1/4) inch to plus one-half (1/2) inch with respect to the thickness shown on the plans.
- E. Straight-Edge Requirements: Maximum variation from a ten (10) foot straight-edge shall be not more than 1/4 inch, with the provision that allowance shall be made for short vertical curves in the application of these requirements.
- F. If the Engineer finds the pavement is not in the tolerances, he will then make a determination if the pavement will be accepted and remain in place. The Engineer will document the basis of acceptance, which may provide for an appropriate adjustment in the contract unit price for the asphaltic concrete items, as he deems necessary, based on his engineering judgement.

If the Engineer finds the work to be unacceptable, the asphaltic concrete shall be replaced or otherwise corrected by and at the expense of the Contractor.

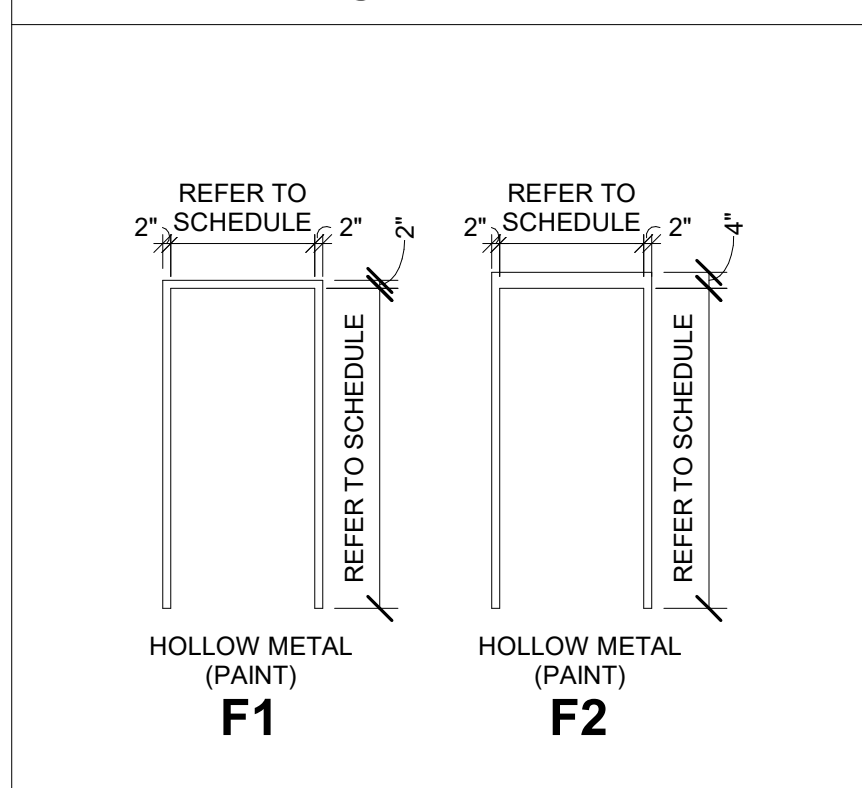
- G. Temporary Pavement Markers: Consists of placing temporary center tabs on freshly paved streets that previously had existing centerlines. Tabs to be self adhered reflective plastic similar to “Toms”, placed approximately 40’ apart.

3.04 BASIS OF PAYMENT

- A. The quantities, complete in place and accepted, will be paid for at the applicable contract unit prices per ton, as described below, which payment shall be full compensation for furnishing, mixing, hauling and placing materials, and for all labor and use of equipment, tools, and incidentals necessary to complete the work in accordance with these specifications.
- B. Payment will be made for asphaltic concrete and aggregate base course, in place in accordance with these specifications and the Contract Unit Price, as follows.
 - 1. Asphaltic Concrete Surface Course MODOT Specifications Section 401 – Type BP-1.
 - 2. Asphaltic Concrete Surface Leveling Course MODOT Specifications Section 402 – Bituminous Surface Leveling.
 - 3. Asphaltic concrete pavement shall be in conformance with MODOT Specifications Section 403 – Type SP095.
 - 4. Asphaltic Concrete Base Course MODOT Specifications Section 401 – Plant Mix Bituminous Base.
 - 5. Aggregate Base Course shall be in conformance with MODOT Specifications Section 304 – Type 1 Aggregate Base.

End of Section 3

FRAME TYPES

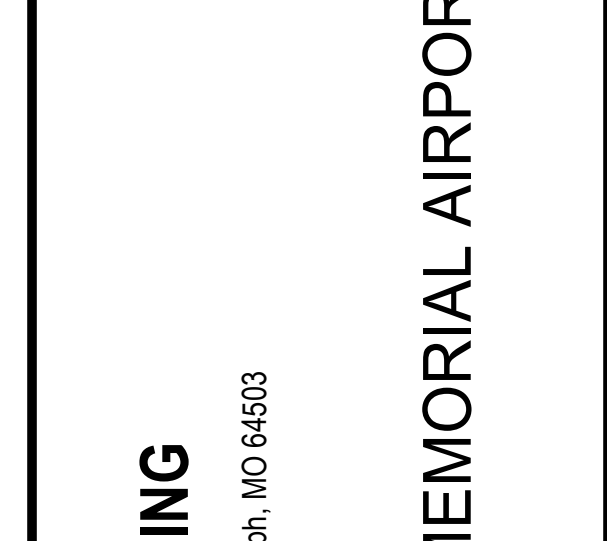


JVIATION®
A WOOLPERT COMPANY

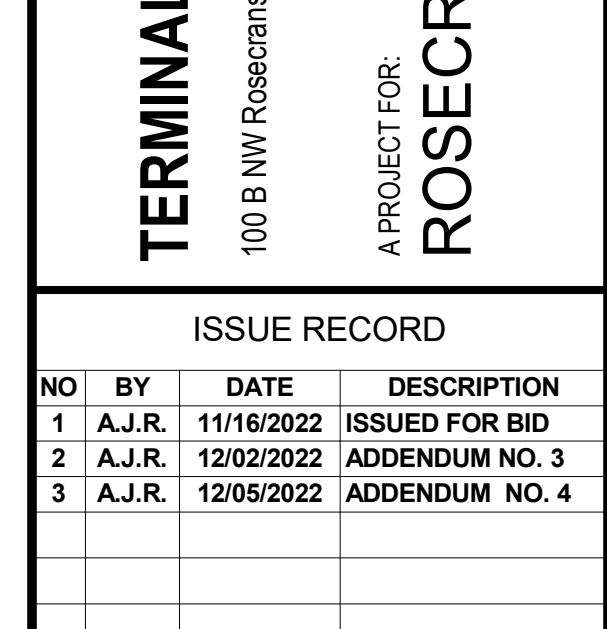
SCALE: 1 1/2" = 1'-0"



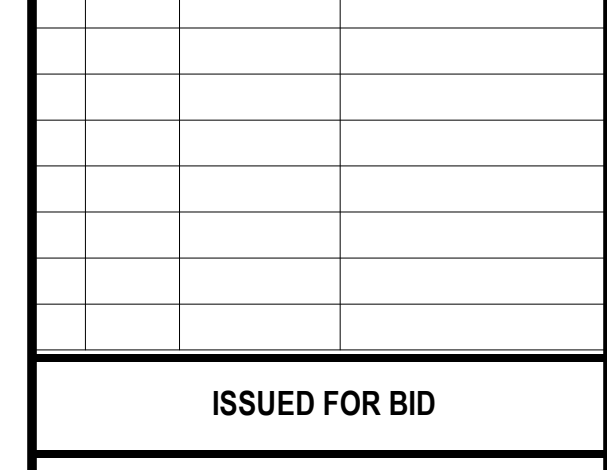
SCALE: 1 1/2" = 1'-0"



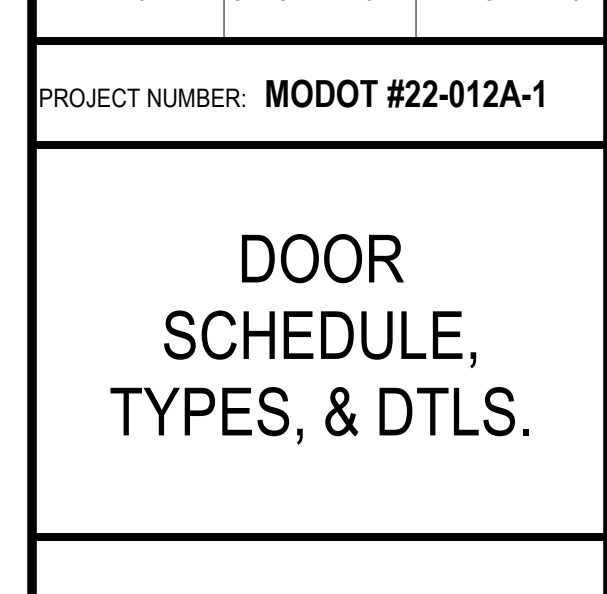
SCALE : 1 1/2" = 1' 0"



SCALE: 1 1/2" = 1'-0"



SCALE: 1 1/2" = 1'-0"

ALUM. DO
 3315 1177 1133

ALUM DOO

GENERAL NOTES:
A. FOR GLAZING TYPES FOR VISION PANELS IN DOORS, REFER TO A-621
B. FOR FRAME TYPES IN STOREFRONTS SEE A-621

NO.	LOCATION	WIDTH	HEIGHT	DOOR TYPE	FRAME TYPE	DETAILS			FIRE RATING	HARDWARE SET	REMARKS
						HEAD	JAMB	SILL			
001	VESTIBULE 001	6' - 0"	7' - 0"	E	W7	C8/A-601	B8/A-601	A8/A-601	4		
001A	VESTIBULE 001	6' - 0"	7' - 0"	E	W10	C8/A-601	B8/A-601	A8/A-601	5		
003	VESTIBULE 003	6' - 0"	7' - 0"	E	W7	C8/A-601	B8/A-601	A8/A-601	4		
003A	VESTIBULE 003	6' - 0"	7' - 0"	E	W10	C8/A-601	B8/A-601	A8/A-601	5		
004	CONFERENCE	7' - 0"	7' - 0"	F1	G8/A-601	F8/A-601	D8/A-601	45 MIN.	1	1 HR RATED WALLS	
004A	CONFERENCE	3' - 0"	7' - 0"	B	F1	G8/A-601	F8/A-601	D8/A-601	1		
006	RECEPTION	6' - 0"	7' - 0"	E	W13	C8/A-601	B8/A-601	A8/A-601	45 MIN.	11	1 HR RATED STOREFRONTS/ GLAZING
007	IT RM	3' - 0"	7' - 0"	B	F1	G8/A-601	F8/A-601	D8/A-601	1 1/2 HR	3	2 HR RATED WALLS
008	OFFICE 008	7' - 0"	7' - 0"	F1	G8/A-601	F8/A-601	D8/A-601	45 MIN.	6		
009	OFFICE 009	3' - 0"	7' - 0"	B	F1	G8/A-601	F8/A-601	D8/A-601	6		
011	RESTAURANT	6' - 0"	7' - 0"	E	W14	C8/A-601	B8/A-601	A8/A-601	45 MIN.	11	1 HR RATED STOREFRONTS/GLAZING
011A	RESTAURANT	6' - 0"	7' - 0"	E	W2	C8/A-601	B8/A-601	A8/A-601	7		
011B	RESTAURANT	3' - 0"	7' - 0"	A	F2	C3/A-601	B3/A-601	A3/A-601	9		
012	KITCHEN	3' - 0"	7' - 0"	A	F2	C3/A-601	B3/A-601	A3/A-601	2		
012A	KITCHEN	8' - 0"	7' - 8"	F	-	D5/A-601	B5/A-601	A5/A-601	7		
012C	KITCHEN	3' - 6"	7' - 0"	D	F1	G8/A-601	F8/A-601	D8/A-601	12	90 DEGREE STOP ON ROLLER - ALUM DOUBLE ACTING KITCHEN DOOR	
013	KITCHEN STORAGE	3' - 0"	7' - 0"	A	F1	G8/A-601	F8/A-601	D8/A-601	3		
015	MENS R.R.	3' - 0"	7' - 0"	B	F1	G8/A-601	F8/A-601	E8/A-601	45 MIN.	8	1 HR RATED WALLS
016	WOMENS R.R.	3' - 0"	7' - 0"	B	F1	G8/A-601	F8/A-601	E8/A-601	45 MIN.	8	1 HR RATED WALLS
017	JANITOR	2' - 6"	7' - 0"	B	F1	G8/A-601	F8/A-601	D8/A-601	45 MIN.	3	1 HR RATED WALLS
018	ELECTRICAL	3' - 0"	7' - 0"	A	F2	C3/A-601	B3/A-601	A3/A-601	10		
018A	EXTERIOR - NORTH	3' - 0"	7' - 0"	A	F2	G8/A-601	F8/A-601	D8/A-601	6		
019	MCHANICAL	3' - 0"	7' - 0"	C	F1	G8/A-601	F8/A-601	D8/A-601	3		

HW, GROUP / DESCR.		DOORS					
HW 1 / OFFICE (CONF.)		004, 004A		HW 5 / OFFICE (VEST.)		001A, 003A	
1	HINGES	BB5000 450 640	BO	6	HINGES	BB5000 450 640	BO
1	CLOSER	7101 BC PA 695	PO	1	AUTO ENTRY	AUTO 172 X	SD
1	OFFICE LOCK	MR115 BUSJ 613 L	PO	2	PUSH SWITCH	480-658B	SD
1	CYLINDER	1E64 C161 613	BE	2	SURFACE BOX	480-658B	SD
1	STOP	575 613	BR	2	PUSH/PULL BAR	422 x 260 613	BR
3	KICKPLATE	KP650 10 X 2" LDW 613	BR	2	STOP	575 613	BR
3	SILENCERS	501	BR				
HW 2 / OFFICE (EXTER.)		012		HW 6 / OFFICE		008, 009, 018A	
3	HINGES	BB5000 450 640	BO	3	HINGES	BB5000 450 640	BO
1	CLOSER	7101 BC PA 695	PO	1	OFFICE LOCK	MR115 BUSJ 613 L	PO
1	STOREROOM LOCK	MR115 BUSJ 613 L	PO	1	CYLINDER	1E64 C161 613	BE
1	CYLINDER	1E64 C161 613	BE	1	STOP	575 613	BR
1	KICKPLATE	KP650 10 X 2" LDW 613	BR	3	SILENCERS	501	BR
1	THRESHOLD	271A 36"	PE				
1	DOOR BOTTOM	1E68 C128 613	PE	HW 7 / KITCHEN	012A		
1	WEATHERSTRIP	300D / 138 2/84	PE				
1	DRIP CAP	346C 40"	PE		ALL HARDWARE BY DOOR SUPPLIER		
HW 3 / INSTITUTIONAL		007, 013, 017, 019		HW 8 / R.R.		015, 016	
3	HINGES	BB5000 450 640	BO	3	HINGES	BB5000 450 640	BO
1	STOREROOM LOCK	MR115 BUSJ 613 L	PO	1	CLOSER	7101 BC PA 695	PO
1	CYLINDER	1E64 C161 613	BE	1	PUSH PLATE	5421A 613	BR
1	STOP	575 613	BR	1	PULL PLATE	5421A 613	BR
3	SILENCERS	500	BR	1	STOP	575 613	BR
				1	KICKPLATE	KP650 10 X 2" LDW 613	BR
				3	SILENCERS	501	BR
HW 4 / OFFICE (ENTRANCE)		001, 003		HW 9 / OFFICE (EXTER.)		011B	
6	HINGES	BB5000 450 640	BO				
2	EL HINGE	BB5060 450ETW 2 N 60	SD	3	HINGES	BB5000 450 640	BO
2	AUTO ENTRY	AUTO 172 X	SD	1	CLOSER	7101 BC PA 695	PO
2	PUSH SWITCH	480-658B	SD	1	STOREROOM LOCK	MR115 BUSJ 613 L	PO
2	SURFACE BOX	480-658B	SD	1	CYLINDER	1E64 C161 613	BE
2	EXIT DEVICE	6201CV18-8 X 6GW03 MLR L 613	PO	1	KICKPLATE	KP650 10 X 2" LDW 613	BR
2	POWER SUPPLY	81440	PO	1	THRESHOLD	271A 36"	PE
2	CYLINDER	1E68 C128 613	PE	1	DOOR BOTTOM	1806 C136 613	PE
2	STOP	128560 613	BE	1	WEATHERSTRIP	300D / 138 2/84	PE
1	THRESHOLD	271A 72"	PE	1	DRIP CAP	346C 40"	PE
1	DOOR BOTTOM	BY DOOR SUPPLIER		1	EXIT DEVICE	6201CV18-8 X 6GW03 MLR L 613	PO
1	WEATHERSTRIP	BY DOOR SUPPLIER					
1	KEYPAD BY OTHERS			HW 10 / INSTITUTIONAL (EXTER.)		018	

MANUFACTURERS USED IN HARDWARE SET

KEYING

1		ELIASON MODEL LWP-3 HARDWARE		EL	
HW 13 / RESTAURANT		011A			
6	HINGES	BB500 450 640		BO	
2	CLOSER	710 BC REG 695		PG	
1	HEADBOLT	CYLINDER X CYLINDER		AR	
2	FLUSHBOLT	BY ADAMS RITE		AR	
2	PUSH/PULL SET	422 X 260 615		BR	
1	SIGN	"TWOX-14" "THREE DOORS TO ..."		CR	
2	...	"REMAIN UNLOCKED WHEN BUILDING IS OCCUPIED"		CR	
2	CYLINDER	12534 C 128 615		BE	
2	STOPS	535 615		BR	
1	THRESHOLD	BY DOOR SUPPLIER			
2	DOOR BOTTOMS	BY DOOR SUPPLIER			
1	ASTRAGAL	BY DOOR SUPPLIER			
1	WEATHERSTRIP SET	BY DOOR SUPPLIER			

