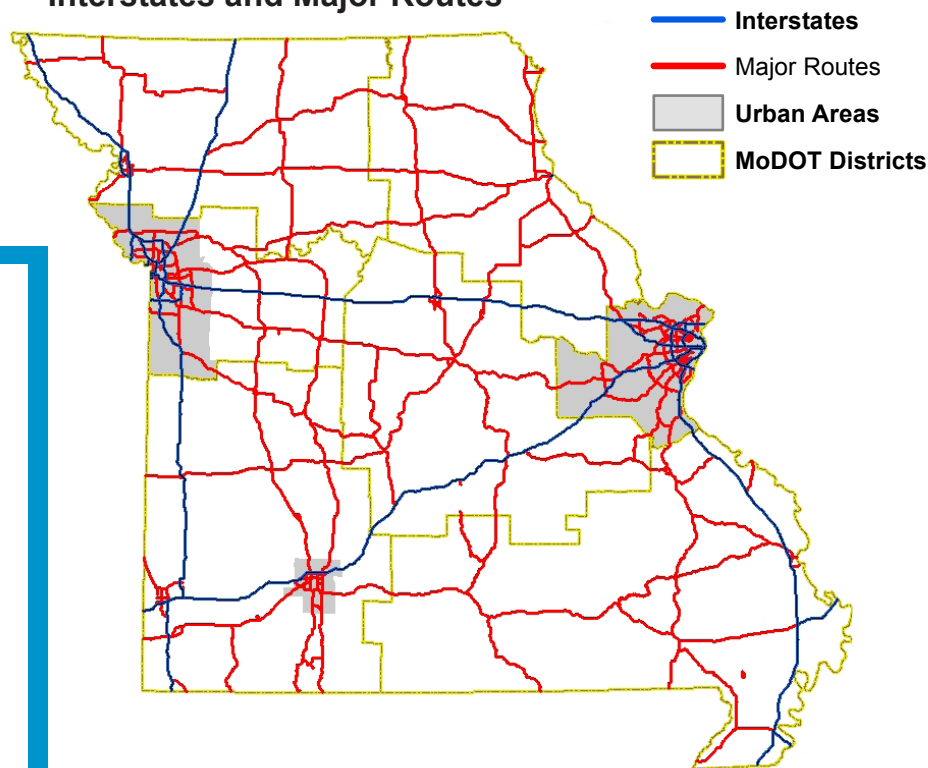


The Current Condition of MISSOURI TRANSPORTATION

What is the Current Condition of Missouri Transportation?

Last year, 52 billion miles were traveled on the state highway system, an increase of 5.3 billion miles, mostly due to the pandemic. The majority of travel occurs on interstates and major routes. Interstates and major routes include just 5,554 miles of the 33,825 miles of highway in Missouri but account for 76% of the travel. Currently, 90% of these routes are in good condition as MoDOT has focused on improving and maintaining these routes over the last decade.

Interstates and Major Routes

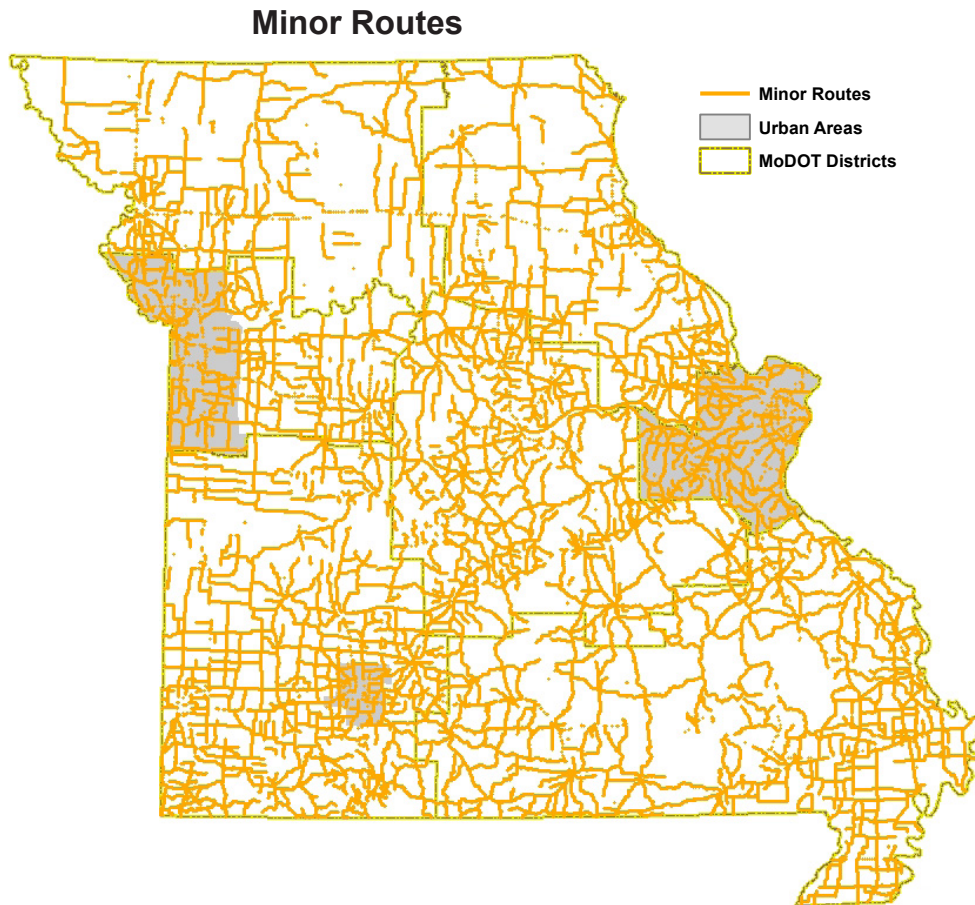


39.4 billion miles were driven on interstates and major routes; therefore, on average, 7.1 million vehicles traveled each mile, an increase of 4.2 billion compared to 2021 after the pandemic.

MoDOT's construction program provides the funding to maintain these routes.

The Current Condition of MISSOURI TRANSPORTATION

Missouri's minor routes make up the largest group of state highways, accounting for 17,848 miles – just over one-half of the entire state highway system. Almost 23% of all state travel occurs on these routes. Currently, 80% of these routes are in good condition.

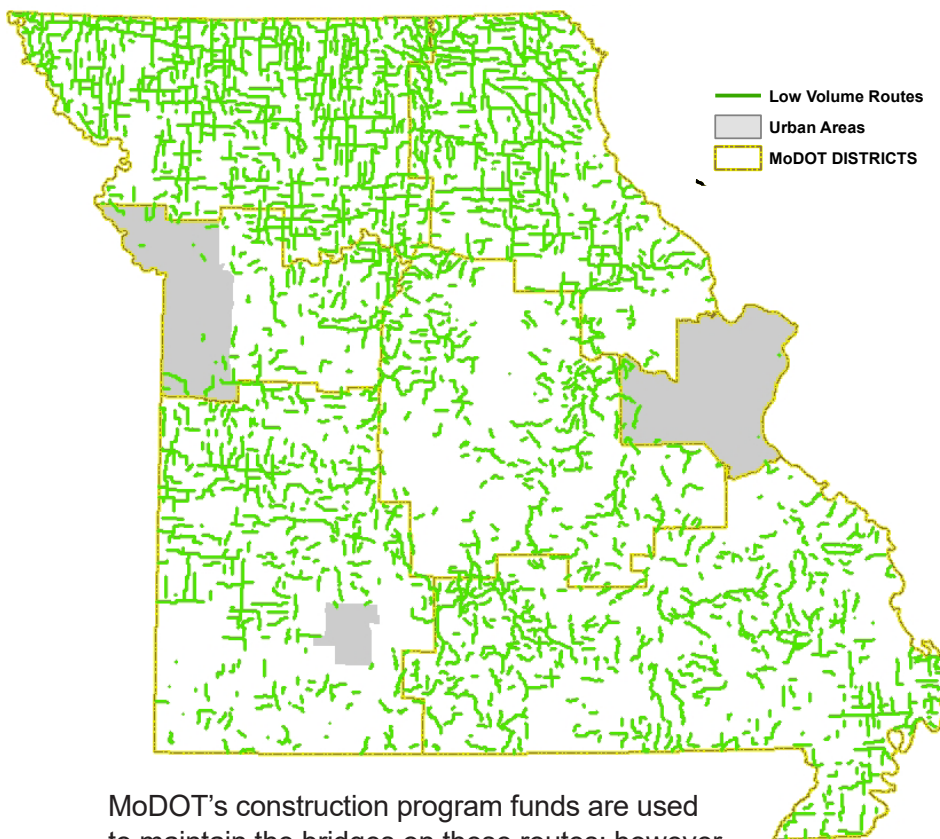


11.8 billion miles were driven on minor routes; therefore, on average, 662,000 vehicles traveled each mile - an increase of 1.2 million miles compared to 2021.

MoDOT's construction program provides the funding to maintain these routes.

The final tier of Missouri highways is low-volume routes. Each of these routes carries less than 400 vehicles per day and primarily serves local transportation needs. Missouri has 10,423 miles of low-volume routes, accounting for about one-third of the state system. However, approximately 5,200 miles of these routes are not on the federal aid highway system and are ineligible for federal funds, which has impacted investment levels and conditions during the past 25 years. Travel on these routes is less than 2% of all state highway travel. Currently, 71% of these routes are in good condition.

Low Volume Routes

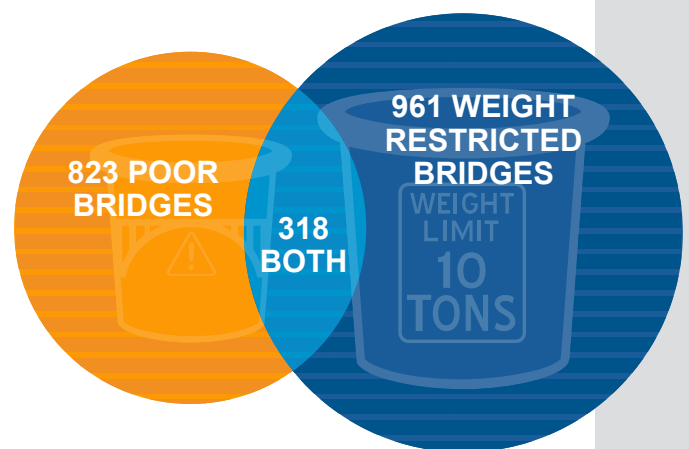


MoDOT's construction program funds are used to maintain the bridges on these routes; however, the pavements on these routes are maintained using MoDOT's maintenance funds.

800 million miles were driven on low volume routes; therefore, on average, 76,753 vehicles traveled each mile.

The Current Condition of MISSOURI TRANSPORTATION

In addition to the huge network of highways, Missouri has 10,387 bridges of varying sizes, including 204 major bridges that are longer than 1,000 feet, or about the length of three football fields. Currently, 823 bridges are in poor condition, an improvement of 14 since 2021. MoDOT inspects these bridges on a regular basis to ensure they are safe for travelers. If a bridge is unsafe, it is closed until repairs can be made. Missouri also has 961 weight-restricted bridges, with 318 of them also in poor condition.



Totals	Typical Bridges	Major Bridges	All Bridges
Number	10,183	204	10,387
Area	64,601,789	22,814,391	87,416,180
Average Age	49.5	39.1	49.3
Weight Restricted	926	35	961
Area of Weight Restricted	6,383,269	5,091,094	11,474,363
Poor	797	26	823
Area of Poor	4,327,347	2,809,008	7,136,355
Both Poor and Weight Restricted	306	12	318
Both Poor and Weight Restricted Area	1,214,150	1,552,483	2,766,633
Only Poor and Only Weight Restricted	1,111	37	1,148
Only Poor and Only Weight Restricted Area	8,282,316	4,795,136	13,077,453
Average Price per Square Foot	\$150	\$900	--
Total Cost	\$9.7 billion	\$20.5 billion	\$30.2 billion

Approximate vehicle weights

Lower weight limits for about 1,300 load-posted state bridges:



AVERAGE STANDARD
CAR: **1.5 TONS**



AVERAGE PICKUP
TRUCK: **3 TONS**



AVERAGE
AMBULANCE: **5 TONS**



AVERAGE DELIVERY
TRUCK: **6 TONS**



AVERAGE
LOADED
SCHOOL BUS:
17 TONS



AVERAGE LOADED
GARBAGE TRUCK:
25 TONS



AVERAGE
LOADED
CHARTER
BUS:
20 TONS



AVERAGE
FIRE TRUCK:
19-30 TONS



AVERAGE LOADED
COMBINE HARVESTER:
30 TONS



AVERAGE LOADED
PLOW TRUCK:
28 TONS



AVERAGE LOADED
CONCRETE TRUCK:
33 TONS



AVERAGE LOADED
DUMP TRUCK:
36 TONS

AVERAGE
LOADED
TRACTOR
TRAILER:
40 TONS



Source: PennDOT

James Hilston/Post-Gazette