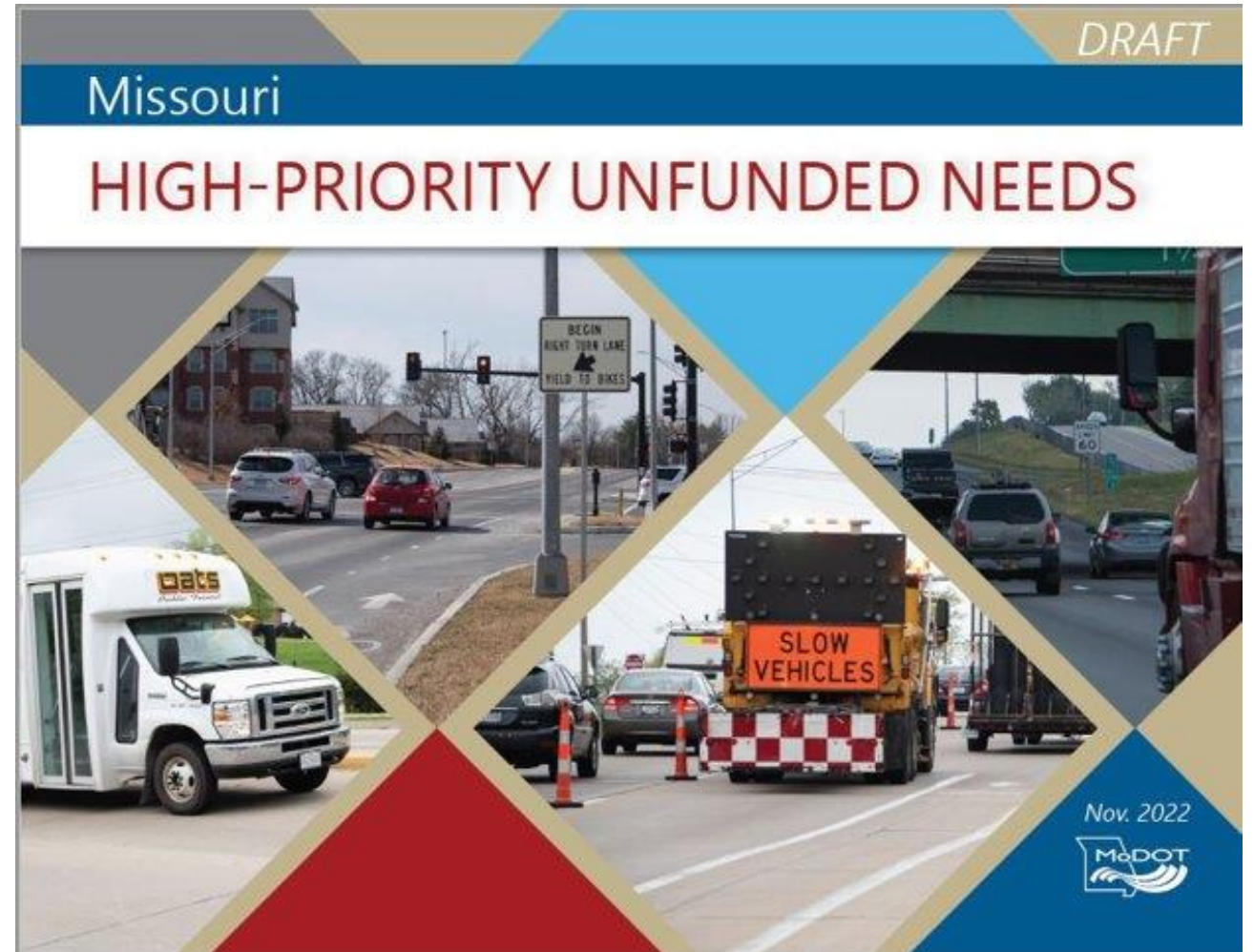
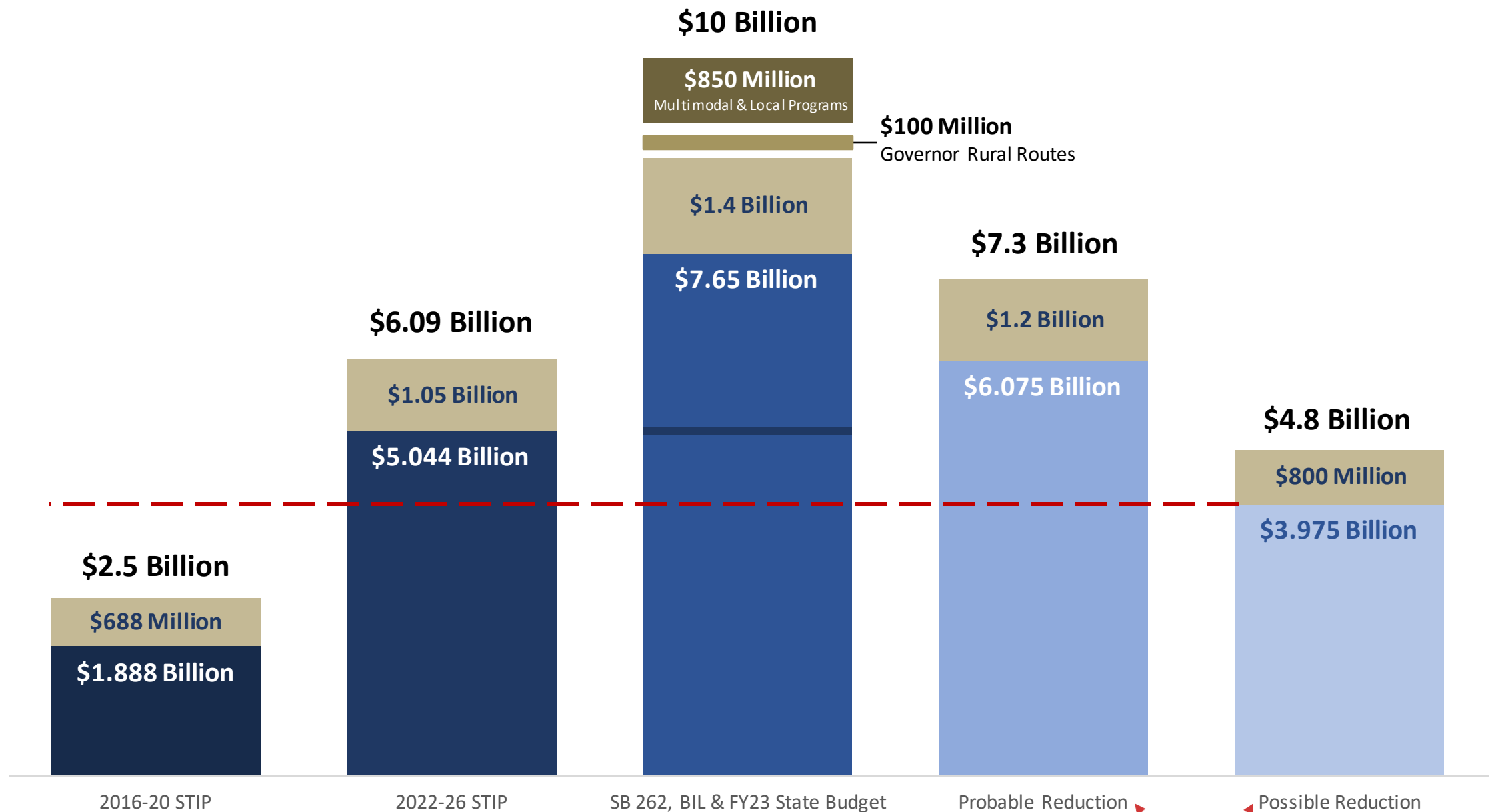


# UNFUNDED NEEDS: PUBLIC MEETINGS

**Kansas City District**





— — — Potential program level

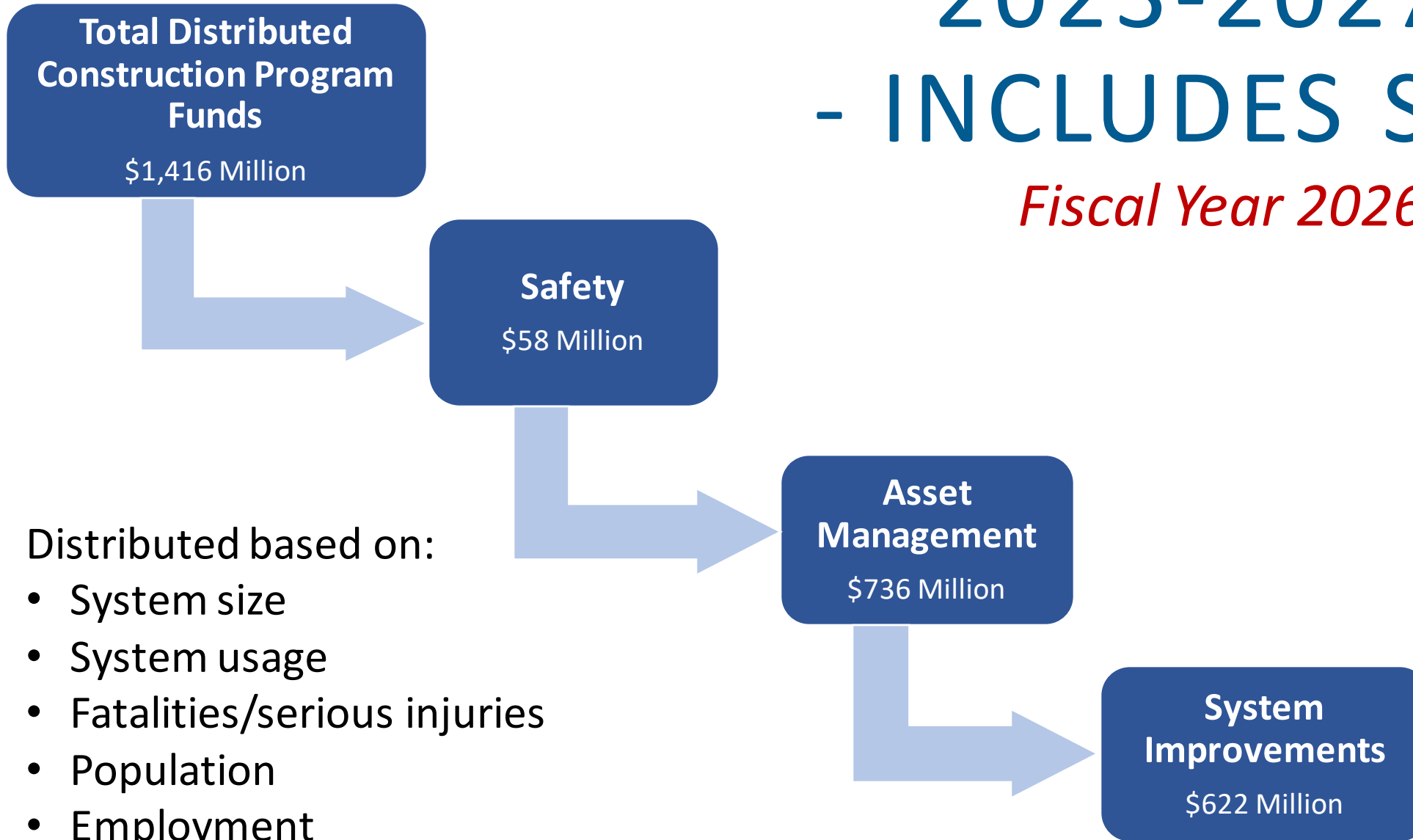
Engineering, Construction Engineering & Utilities

SB 262

\*Estimated STIP Distribution

# 2023-2027 STIP - INCLUDES SB262

*Fiscal Year 2026 Amounts*



Distributed based on:

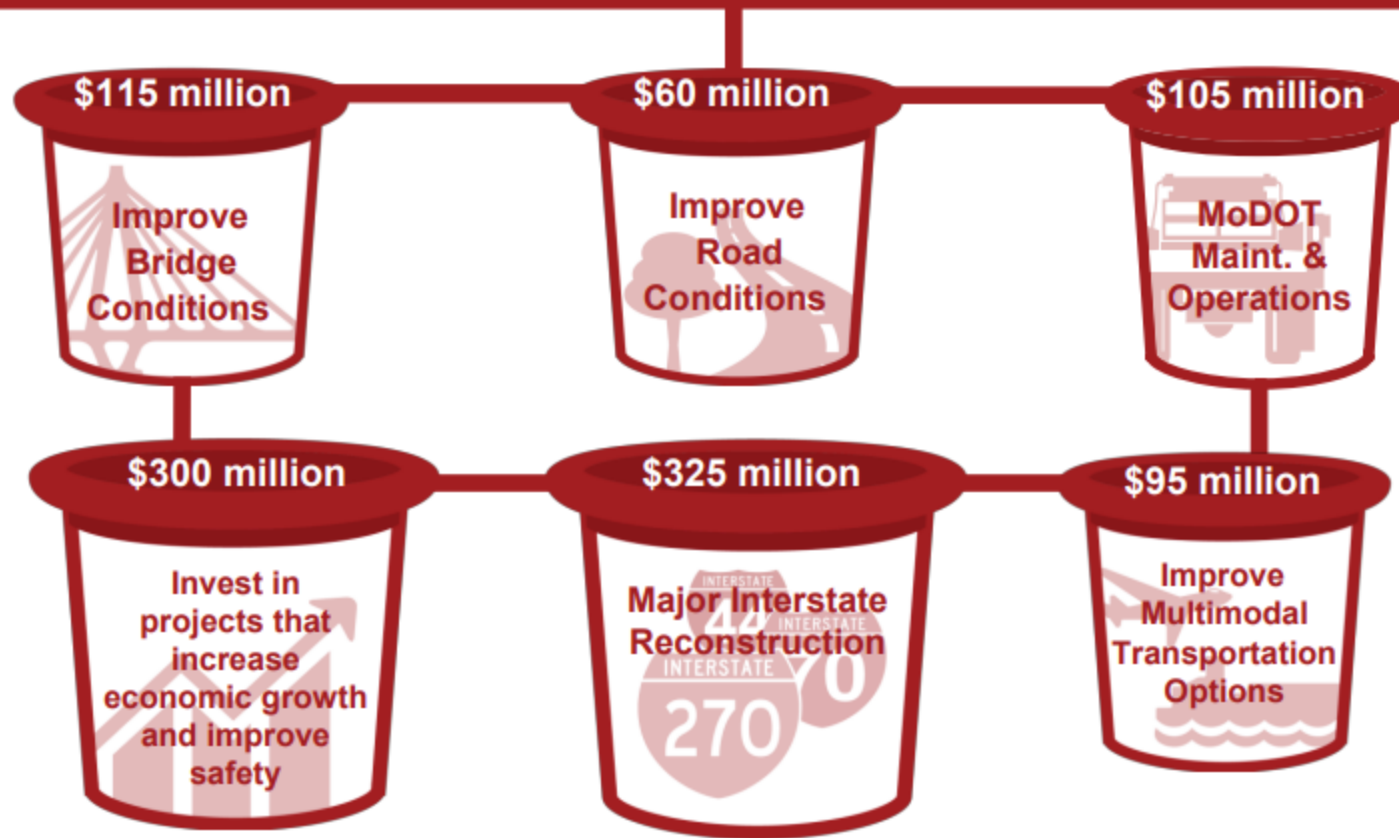
- System size
- System usage
- Fatalities/serious injuries
- Population
- Employment

*Subject to MHTC approval*



## HIGH-PRIORITY UNFUNDED ANNUAL TRANSPORTATION NEEDS

\$1 billion



# THE NEEDS

# THE OUTCOME

- \$4.7 billion of road and bridge needs in new updated document
  - Three tiers
  - Tier one = could be accomplished in the current STIP horizon
- \$1 billion of multimodal needs



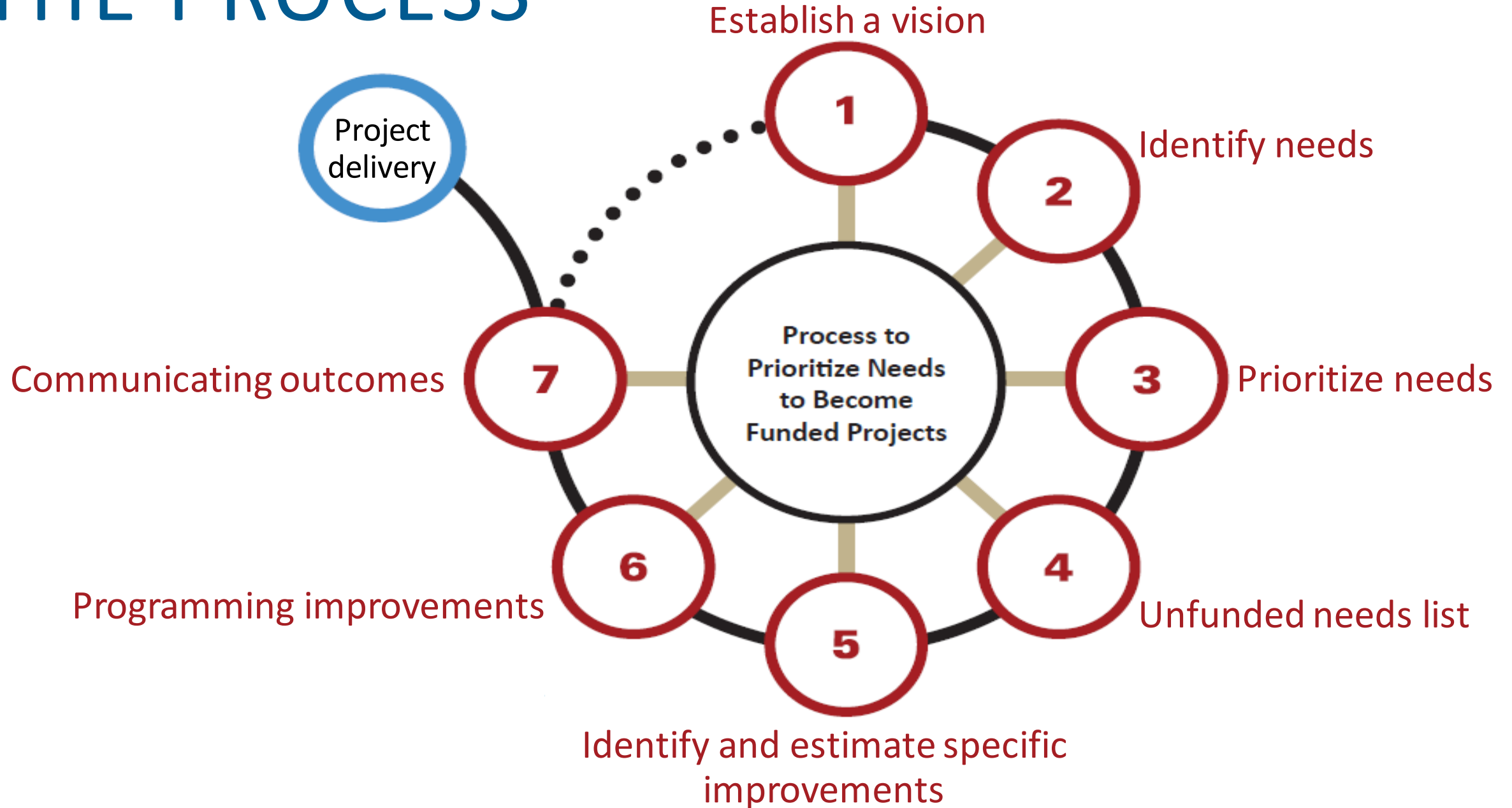
DRAFT

Missouri

# HIGH-PRIORITY UNFUNDED NEEDS



# THE PROCESS

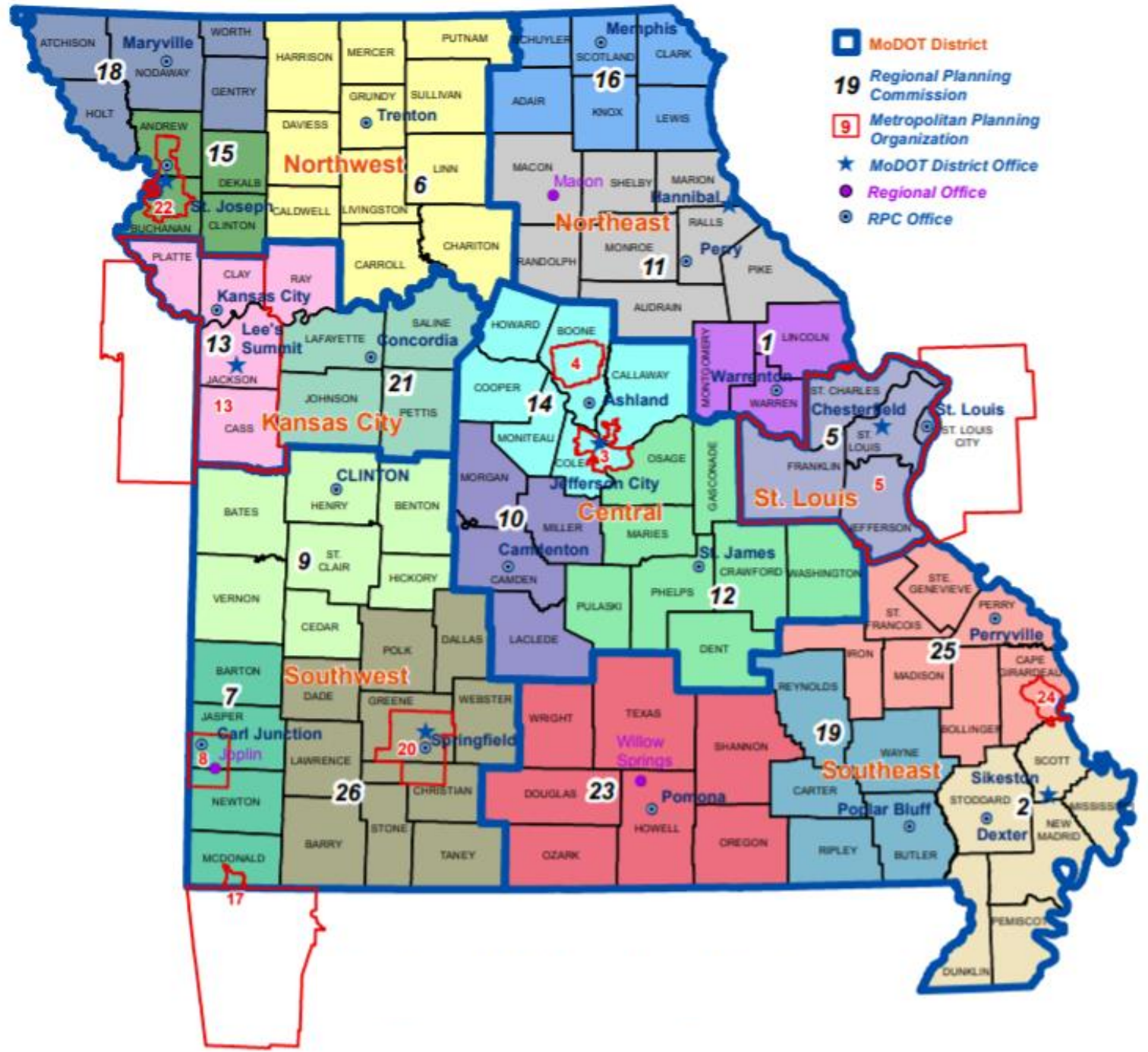


# 3

**Prioritize needs** – MoDOT district offices work with MPOs and RPCs to annually prioritize regional needs, collectively. This requires multiple planning entities within a MoDOT district to work collectively to create priorities among all needs identified, regardless of location. Safety, traffic volume, asset condition data are used to help select the highest priorities within a MoDOT district boundary.

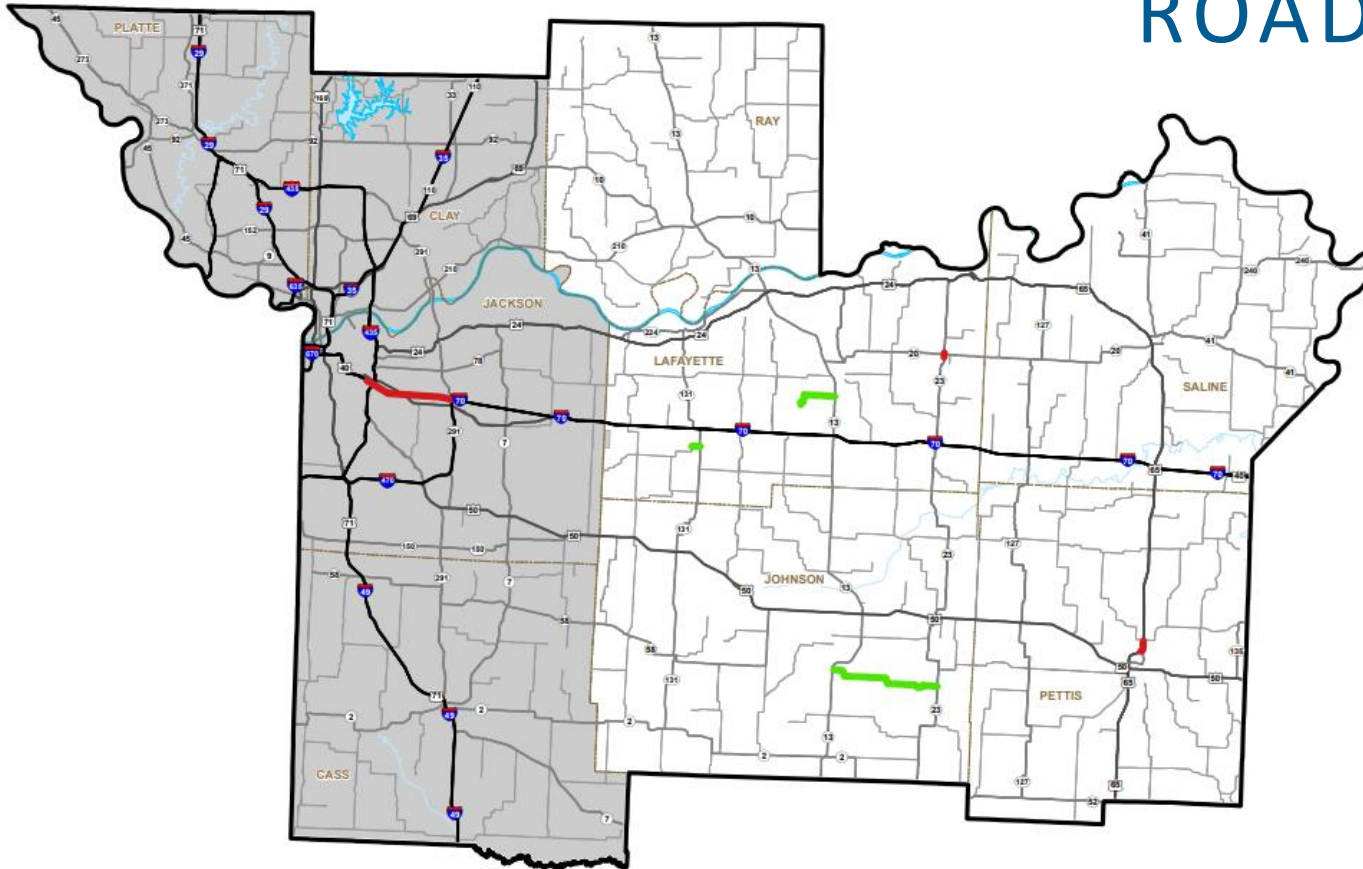


# REGIONAL PLANNING PARTNERS



# HIGH-PRIORITY UNFUNDED ROAD AND BRIDGE NEEDS

Rural Tier 1 - \$15 million  
Urban Tier 1 - \$100 million

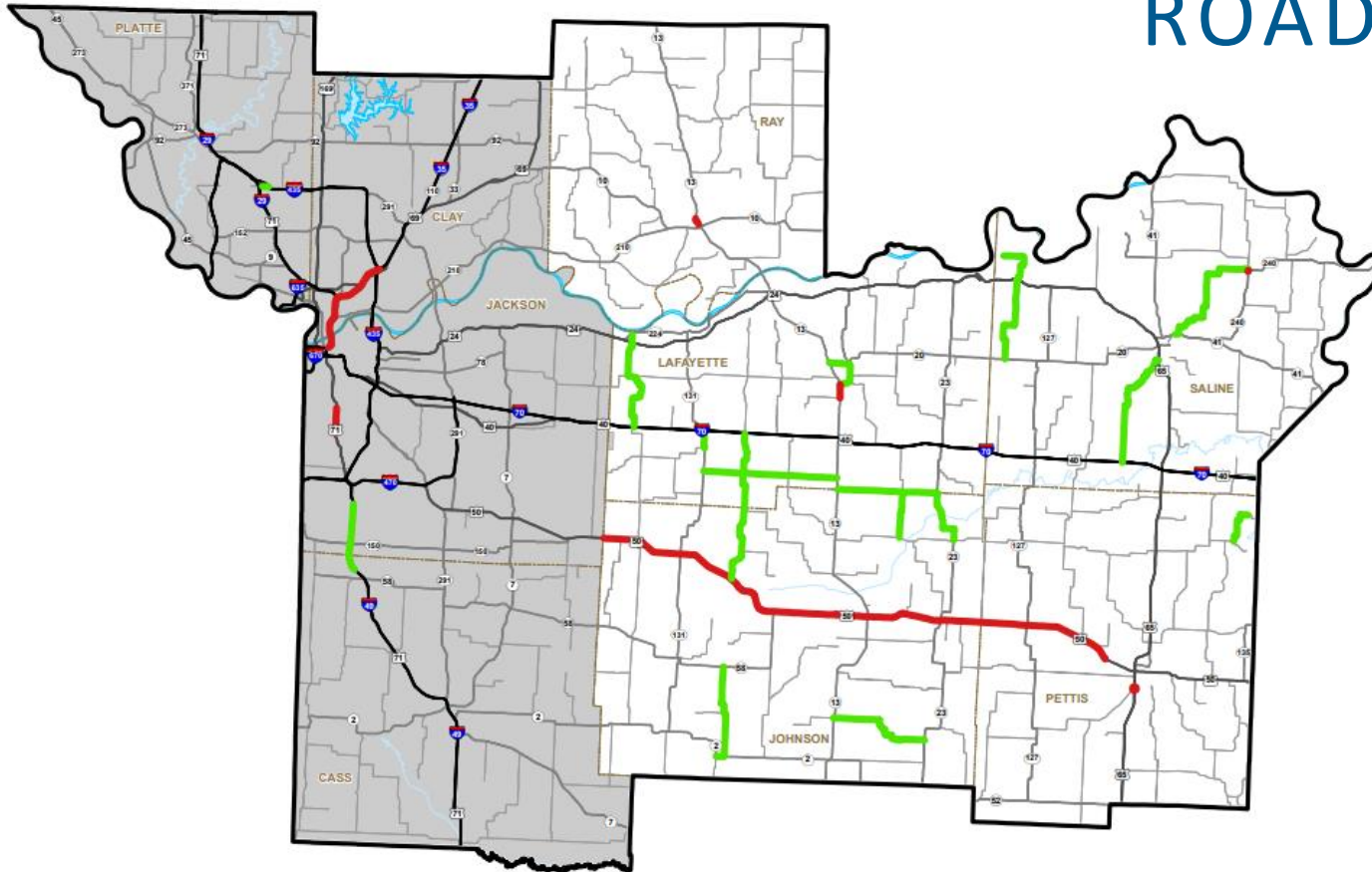


- Improve Bridge Conditions
- Improve Road Conditions
- Increase Economic Growth and Improve Safety
- Major Interstate Reconstruction

## KANSAS CITY - TIER 1

# HIGH-PRIORITY UNFUNDED ROAD AND BRIDGE NEEDS

Rural Tier 2 - \$60 million  
Urban Tier 2 - \$360 million



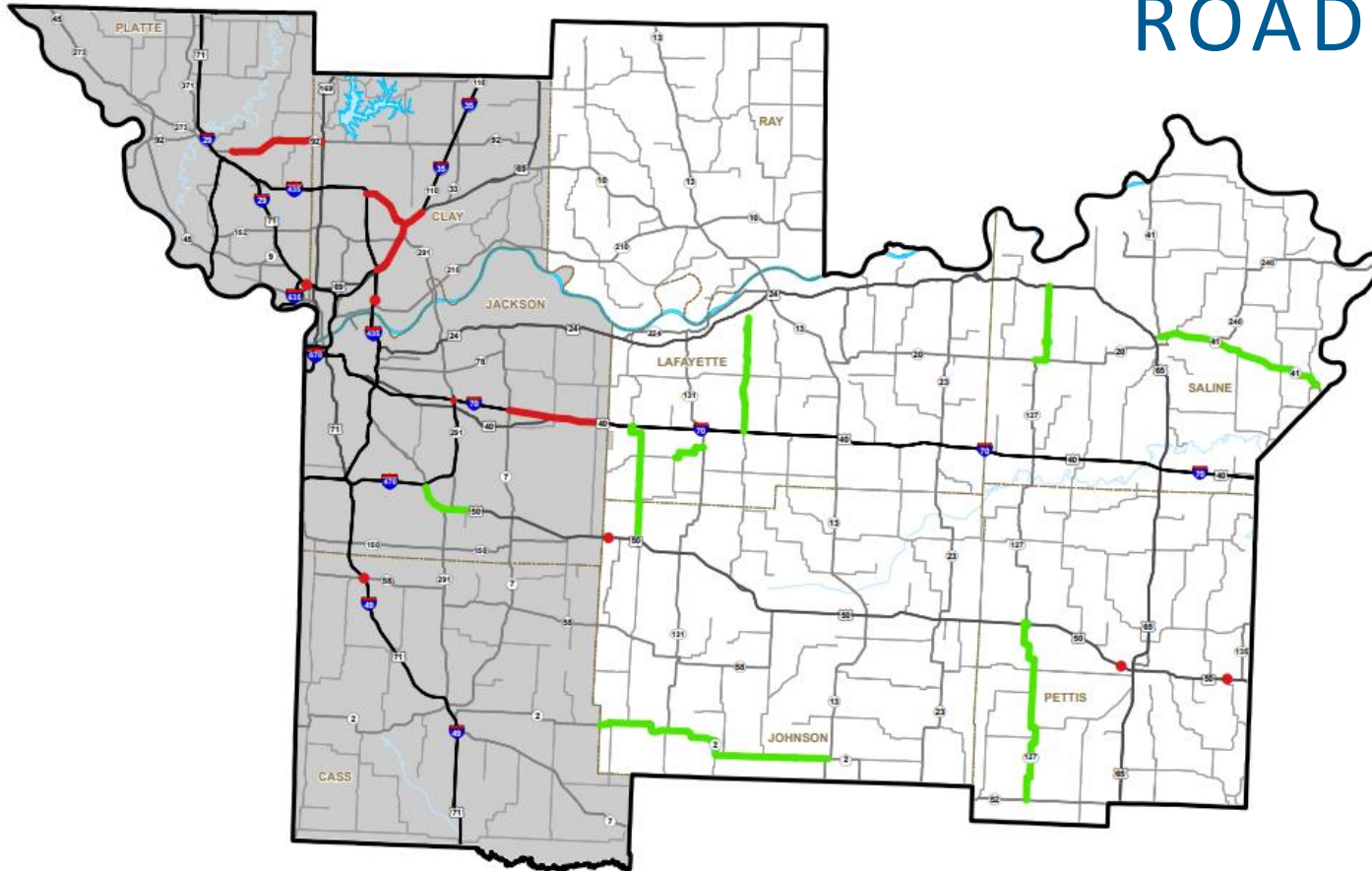
- Improve Bridge Conditions
- Improve Road Conditions
- Increase Economic Growth and Improve Safety
- Major Interstate Reconstruction

## KANSAS CITY - TIER 2



# HIGH-PRIORITY UNFUNDED ROAD AND BRIDGE NEEDS

Rural Tier 3 - \$58 million  
Urban Tier 3 - \$386 million



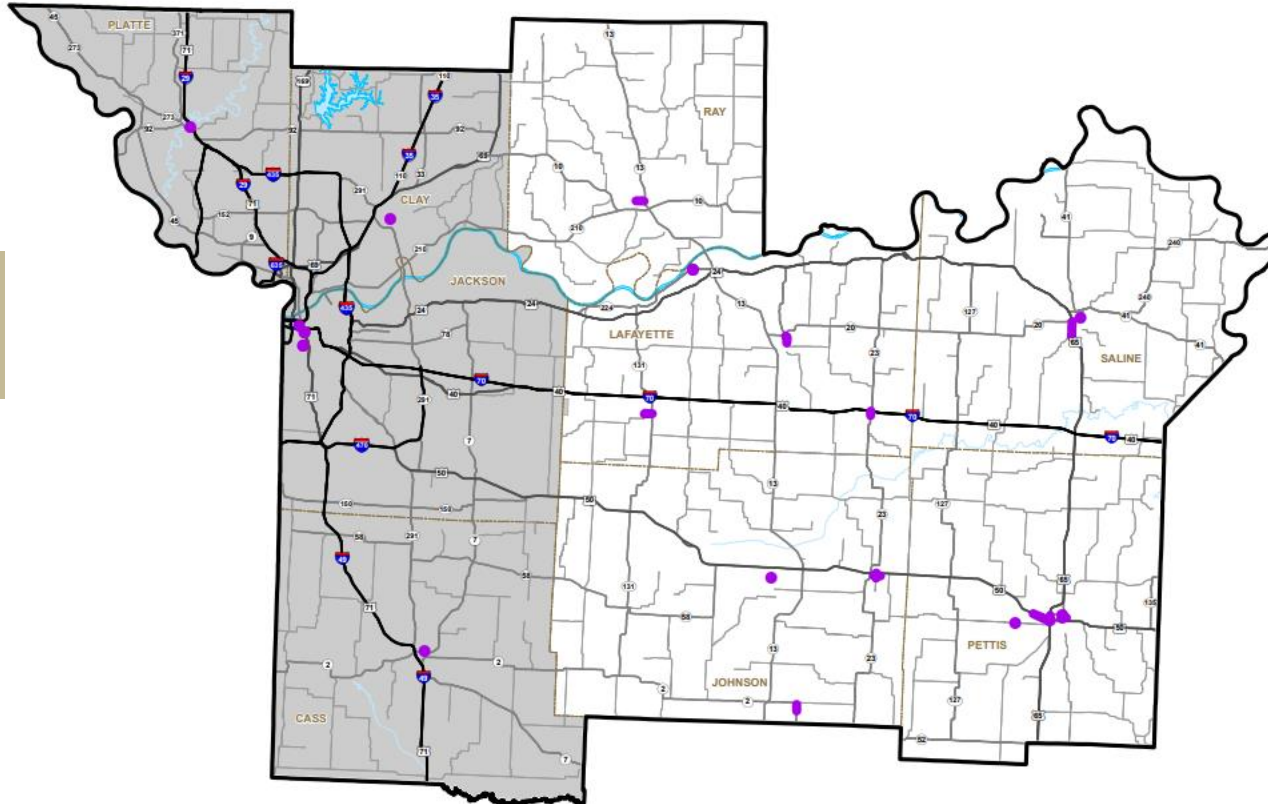
- Improve Bridge Conditions
- Improve Road Conditions
- Increase Economic Growth and Improve Safety
- Major Interstate Reconstruction

## KANSAS CITY - TIER 3



# HIGH-PRIORITY UNFUNDED MULTIMODAL NEEDS

Rural Multimodal - \$33 million  
Urban Multimodal - \$182 million



Improve Multimodal Transportation Options

## KANSAS CITY - MULTIMODAL



# KANSAS CITY SUMMARY

RURAL

TIER	IMPROVE BRIDGE CONDITIONS	IMPROVE ROAD CONDITIONS	INCREASE ECONOMIC GROWTH & IMPROVE SAFETY	MAJOR INTERSTATE RECONSTRUCTION	IMPROVE MULTIMODAL TRANSPORTATION OPTIONS	TOTAL
TIER 1		\$2,300	\$12,412			\$14,712
TIER 2		\$37,105	\$23,286			\$60,391
TIER 3		\$55,210	\$2,940			\$58,150
MULTI- MODAL					\$33,186	\$33,186
TOTAL	\$0	\$94,615	\$38,638	\$0	\$33,186	\$166,439

URBAN

TIER	IMPROVE BRIDGE CONDITIONS	IMPROVE ROAD CONDITIONS	INCREASE ECONOMIC GROWTH & IMPROVE SAFETY	MAJOR INTERSTATE RECONSTRUCTION	IMPROVE MULTIMODAL TRANSPORTATION OPTIONS	TOTAL
TIER 1			\$100,000			\$100,000
TIER 2		\$91,850	\$268,400			\$360,250
TIER 3		\$46,200	\$340,291			\$386,491
MULTI- MODAL					\$182,001	\$182,001
TOTAL	\$0	\$138,050	\$708,691	\$0	\$182,001	\$1,028,742



# STATEWIDE - TOTALS BY PRIORITY

DISTRICT	TIER 1	TIER 2	TIER 3	MULTIMODAL	MAJOR BRIDGE	STATEWIDE	GRAND TOTAL
NORTHWEST	\$24,640	\$92,813	\$104,266	\$52,230	\$61,200	-	\$335,149
NORTHEAST	\$23,468	\$93,873	\$94,035	\$47,587	\$51,000	-	\$309,963
KANSAS CITY RURAL	\$14,712	\$60,391	\$58,150	\$33,186	-	-	\$166,439
KANSAS CITY URBAN	\$100,000	\$360,250	\$386,491	\$182,001	\$316,422	-	\$1,345,164
CENTRAL	\$59,890	\$225,862	\$225,887	\$112,690	-	-	\$624,329
ST. LOUIS	\$185,600	\$690,500	\$786,500	\$354,925	\$108,528	-	\$2,126,053
SOUTHWEST RURAL	\$47,212	\$189,413	\$191,099	\$98,120	-	-	\$525,844
SOUTHWEST URBAN	\$27,721	\$118,301	\$117,604	\$57,870	-	-	\$321,496
SOUTHEAST	\$44,866	\$186,367	\$186,844	\$93,820	\$89,290	-	\$601,187
STATEWIDE	-	-	-	-	-	\$3,705,800	\$3,705,800
Grand Total	\$528,109	\$2,017,770	\$2,150,876	\$1,032,428	\$626,440	\$3,705,800	\$10,061,423

# STATEWIDE - TOTALS BY TYPE

DISTRICT	IMPROVE BRIDGE CONDITIONS	IMPROVE ROAD CONDITIONS	INCREASE ECONOMIC GROWTH & IMPROVE SAFETY	MAJOR INTERSTATE RECONSTRUCTION	MULTIMODAL	GRAND TOTAL
NORTHWEST	\$71,745	\$45,498	\$52,450	\$52,026	\$52,230	\$273,949
NORTHEAST	\$5,875	\$20,211	\$128,317	\$56,973	\$47,587	\$258,963
KANSAS CITY RURAL	-	\$94,615	\$38,638	-	\$33,186	\$166,439
KANSAS CITY URBAN	-	\$138,050	\$708,691	-	\$182,001	\$1,028,742
CENTRAL	\$1,257	\$25,392	\$410,286	\$74,704	\$112,690	\$624,329
ST. LOUIS	\$374,500	\$67,000	\$241,100	\$980,000	\$354,925	\$2,017,525
SOUTHWEST RURAL	-	\$20,886	\$392,980	\$13,858	\$98,120	\$525,844
SOUTHWEST URBAN	-	-	\$263,626	-	\$57,870	\$321,496
SOUTHEAST	\$6,394	\$7,304	\$404,379	-	\$93,820	\$511,897
STATEWIDE	-	\$25,000	\$790,800	\$2,870,000	\$20,000	\$3,705,800
MAJOR BRIDGE	\$626,440	-	-	-	-	\$626,440
Grand Total	\$1,086,211	\$443,956	\$3,431,267	\$4,047,561	\$1,052,428	\$10,061,423

To view the document and submit a comment:  
[modot.org/unfundedneeds](https://modot.org/unfundedneeds)

---

NEXT STEPS

