

# US ROUTE 61 AND MISSOURI ROUTE 47 INTERCHANGE

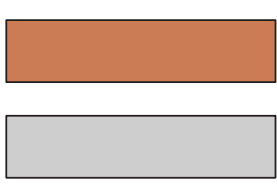
## TENTATIVE CONSTRUCTION PHASING



### LEGEND

Work Area

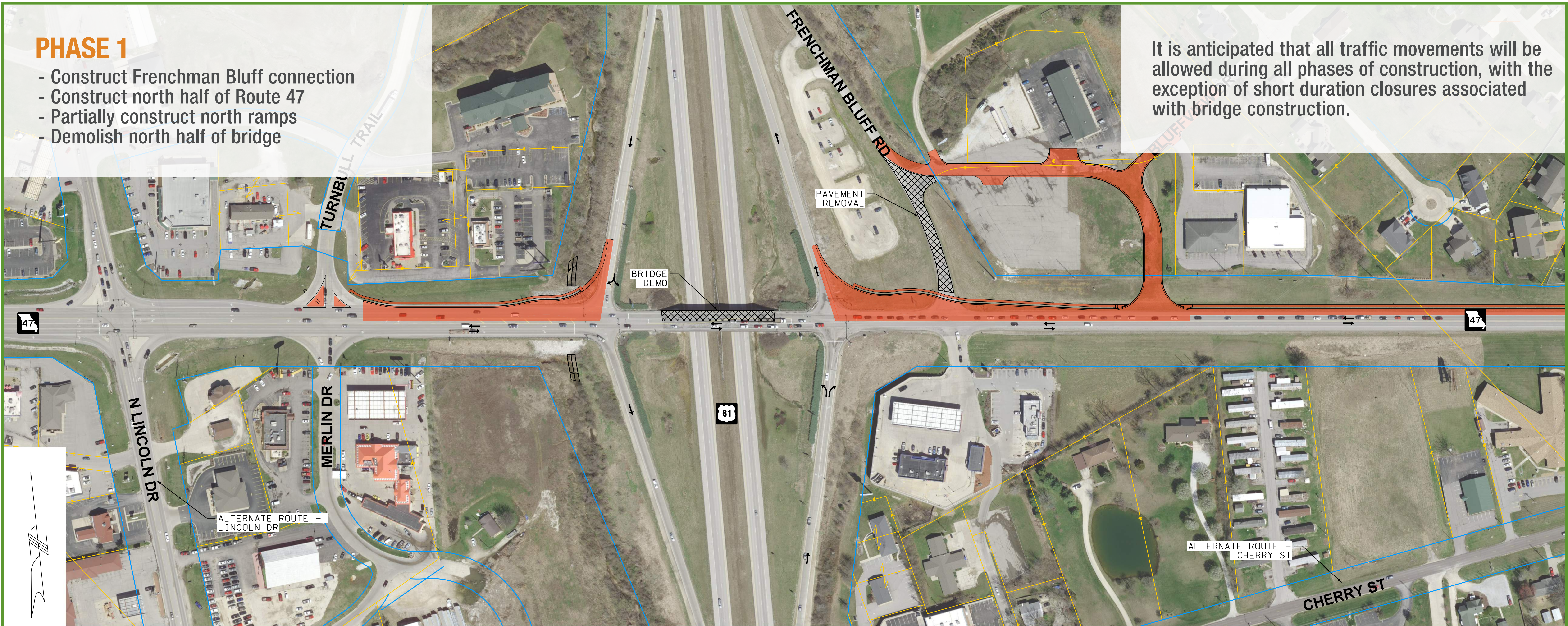
Completed Construction



### PHASE 1

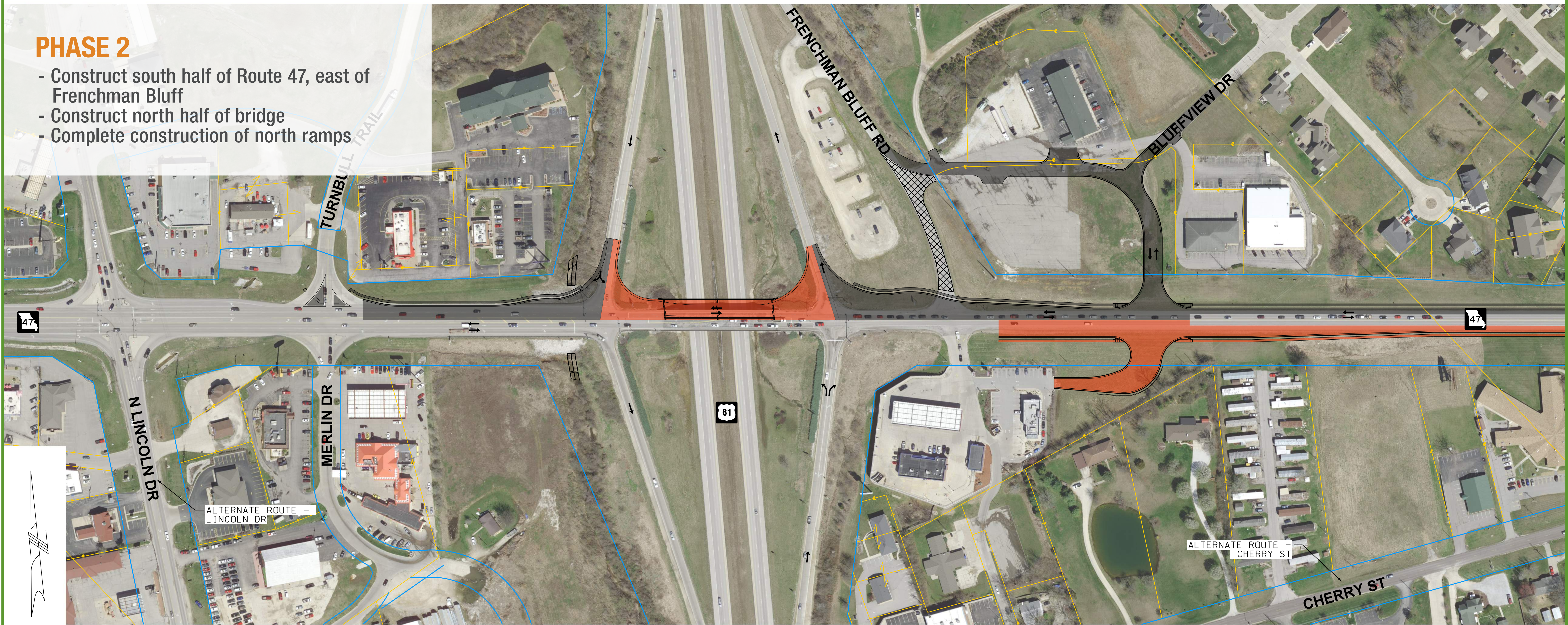
- Construct Frenchman Bluff connection
- Construct north half of Route 47
- Partially construct north ramps
- Demolish north half of bridge

It is anticipated that all traffic movements will be allowed during all phases of construction, with the exception of short duration closures associated with bridge construction.



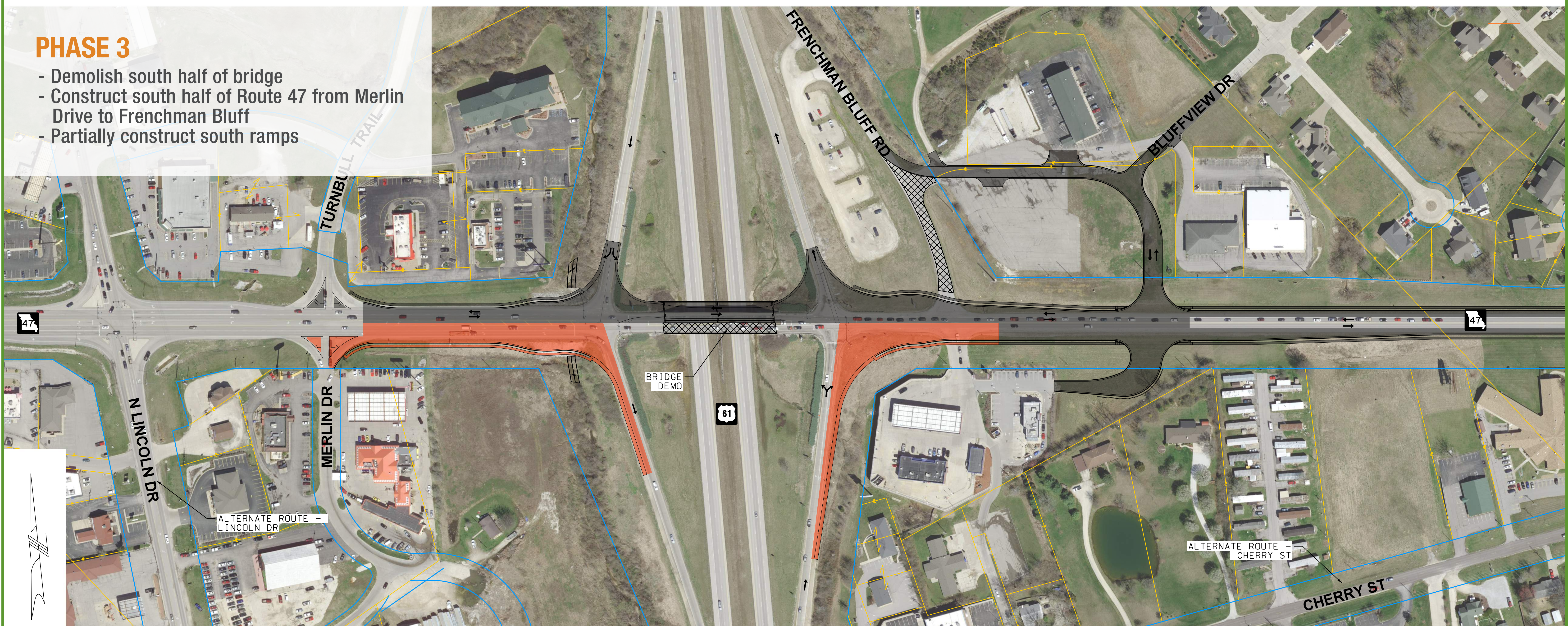
### PHASE 2

- Construct south half of Route 47, east of Frenchman Bluff
- Construct north half of bridge
- Complete construction of north ramps



### PHASE 3

- Demolish south half of bridge
- Construct south half of Route 47 from Merlin Drive to Frenchman Bluff
- Partially construct south ramps



### PHASE 4

- Construct south half of bridge
- Complete construction of south ramps

### PHASE 5 (NOT SHOWN)

- Construct raised islands
- Mill and overlay existing Route 47 lanes east of Frenchman Bluff

