

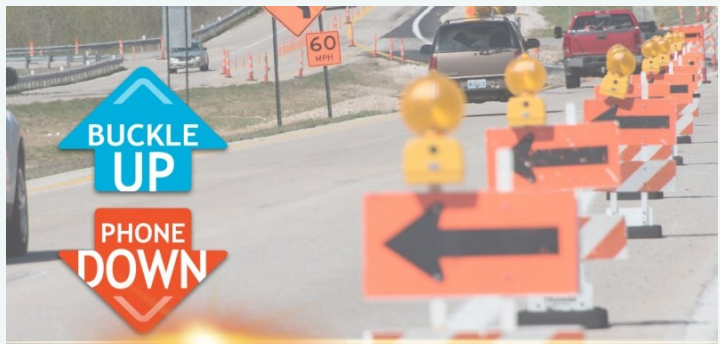
Diverging Diamond Interchange

Interchanges are designed to fit specific local conditions and meet driver expectations. Factors such as safety, cost, capacity, environment, development and politics can vary at every site; consequently there are hundreds of unique, one-of-a-kind interchanges worldwide.

Diamond interchanges are the most common type and are suitable in both rural and urban areas. They can become congested, though, by a high volume of left-turning movements on the crossroad, and they often include signals that control ramp access to and from the crossroad. Spacing between the ramps is critical for efficient movement of traffic through the interchange.



Work Zone Awareness



modot.org/work-zone-awareness

In Missouri in 2021...

DISTRACTED DRIVING

contributed to 336 work zone crashes.

SPEEDING

involved in 11% of work zone crashes.

SEAT BELTS

70% of vehicle occupant fatalities in work zones were not wearing a seat belt.



Your participation and feedback are important to us!

Comments can be made at tonight's meeting or email NECR@modot.mo.gov prior to November 10th.

Invite us to speak to your organization or agency by calling (888) 275-6636.

Stay updated on this project by signing up for MoDOT's e-update service at www6.modot.mo.gov/eMoDOTWeb/jsp/signon/signon.jsp.

U.S. Route 61/ MO Route 47 Diverging Diamond Interchange

US Route 61 East Outer Road Extension

Bridge Replacement and Road Widening

Drivers who use the U.S. Route 61/Missouri Route 47 interchange in Troy can look forward to significantly reduced congestion with a new interchange. Throughout 2024, construction will begin to replace the overpass and make major improvements to the interchange area. The current estimated cost is approximately \$15 million.

Specific details about the project will continue to be shared on the web project page and through social media and the local newspaper.

Project Goals

- Eliminate at-grade crossing of US 61 at North Lincoln Drive/Dugan Lane
- Provide safer access to Route 47 by extending outer road from Dugan Lane to Frenchman Bluff Road
- Provide safe pedestrian walkway
- Replace overpass/bridge
- Reduce congestion at interchange by constructing diverging diamond interchange
- Improve traffic flow on Route 47 by widening an additional lane in each direction

For More Information Contact:
Jeff Niemeyer, MoDOT Area Engineer
 Phone: 573-808-3562
Jeffrey.Niemeyer@modot.mo.gov



modot.org/diamond-interchanges



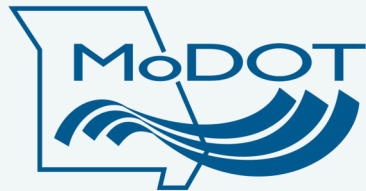
Diverging Diamond Interchange Animation video example. Scan the QR code or enter the link above.

Welcome to E-updates and Text Alerts

New Subscriber

Returning Subscriber
 Customer ID
 Password

Stay informed on road closures, events, and more through MoDOT's e-update text/email alert system. Modot.org



Missouri Department of Transportation
 1-888 ASK MODOT (275-6636)
www.modot.org/northeast



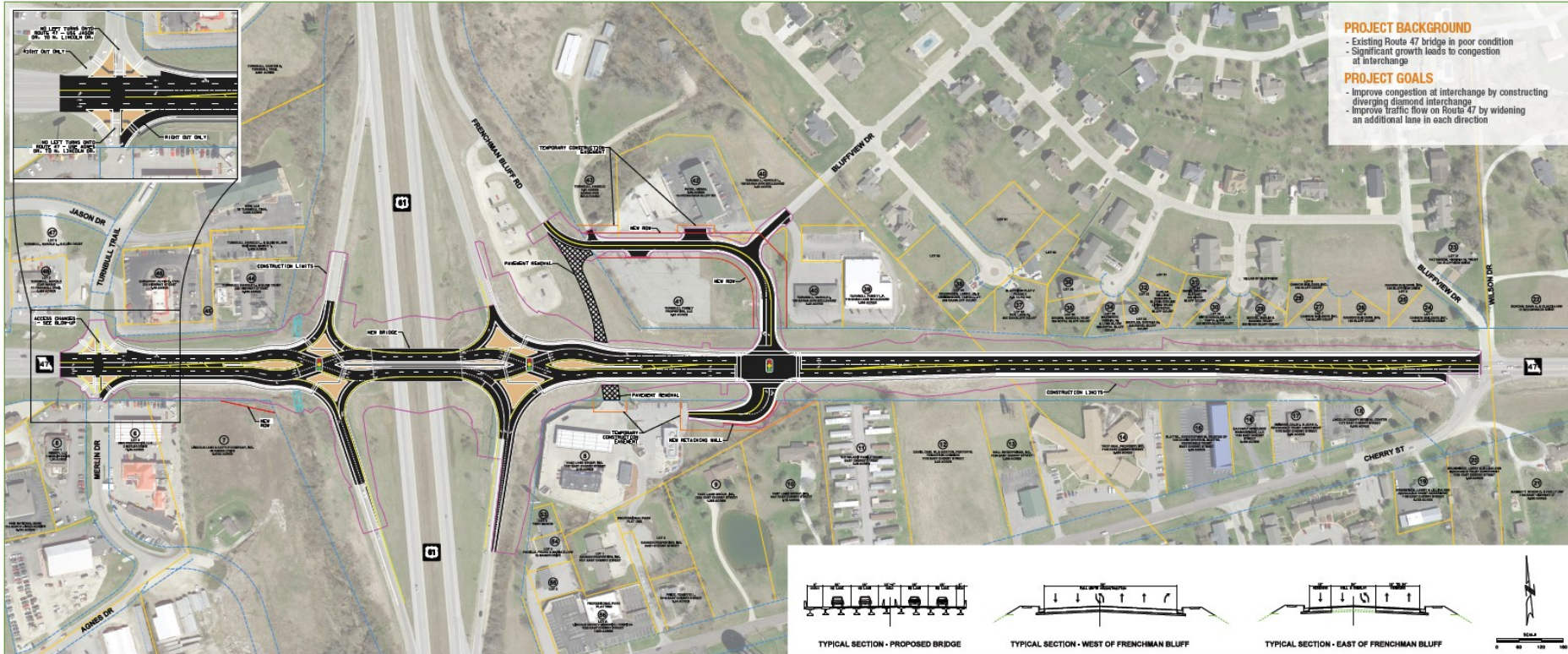
U.S. ROUTE 61 AND MISSOURI ROUTE 47 INTERCHANGE

BRIDGE REPLACEMENT AND ROAD WIDENING



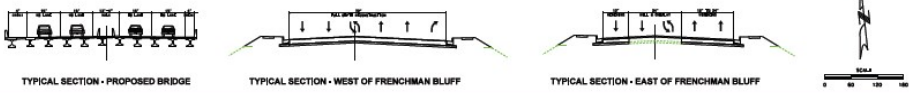
LEGEND

- Property Line
- Proposed Easement
- Construction Limits
- Proposed Right-of-Way
- Existing Right-of-Way
- Raised Median



PROJECT BACKGROUND
 - Existing Route 47 bridge in poor condition
 - Significant growth leads to congestion at interchange

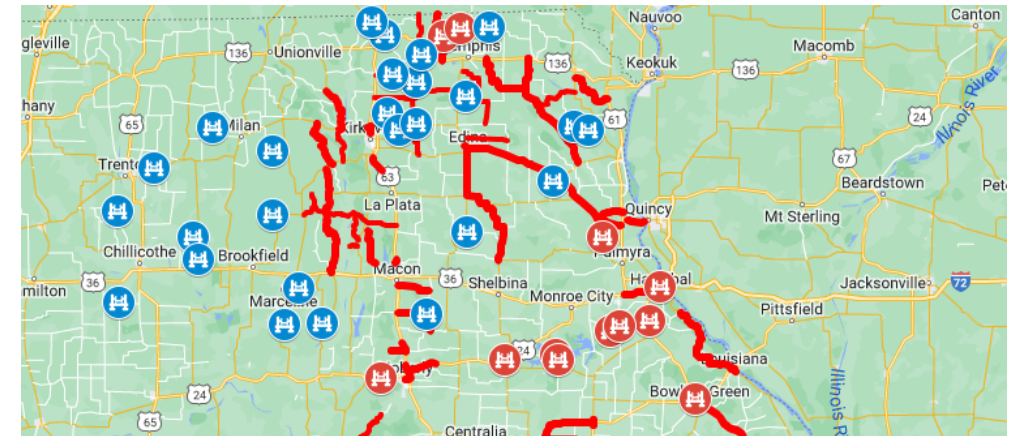
PROJECT GOALS
 - Improve congestion at interchange by constructing diverging diamond interchange
 - Improve traffic flow on Route 47 by widening an additional lane in each direction



MoDOT Northeast District Construction Guide



Interested in major road work in Northeast Missouri? Check out our construction guide which provides an interactive map, county by county listing of major projects scheduled this year as well as the ability to print a text version of the information.



Missouri Coalition for Roadway Safety



The Northeast Coalition for Roadway Safety is always looking for ways to be involved in events so we can share information about safe driving. Know of an event? We are happy to provide with educational items, t-shirts, or material, and possibly even attend! Just email NECR@modot.mo.gov.

Always remember to Buckle Up and put your Phone Down! Take the challenge yourself and then challenge your friends, family and those in your community to buckle up and put the phone down while driving.



www.saveMOLives.com

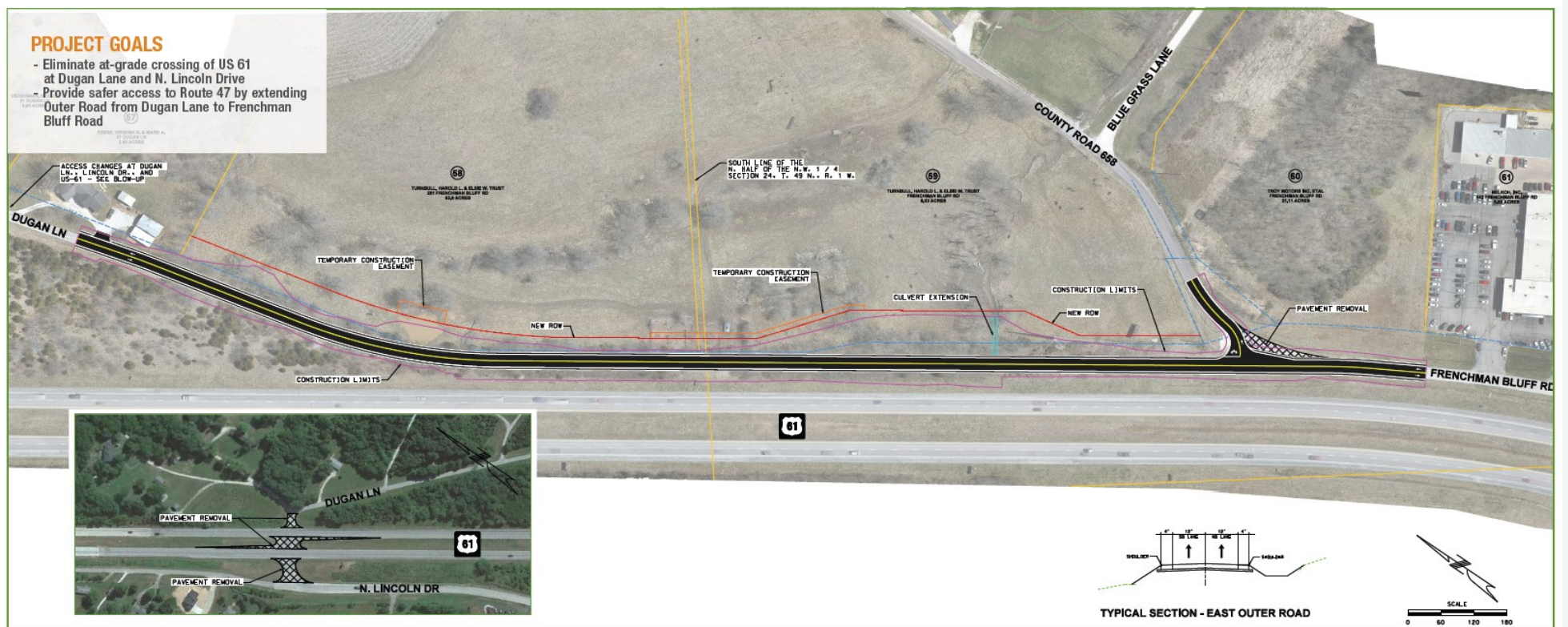
U.S. ROUTE 61 AND MISSOURI ROUTE 47 INTERCHANGE

US ROUTE 61 EAST OUTER ROAD EXTENSION



LEGEND

- Property Line
- Proposed Easement
- Construction Limits
- Proposed Right-of-Way
- Existing Right-of-Way
- Raised Median



PROJECT GOALS
 - Eliminate at-grade crossing of US 61 at Dugan Lane and N. Lincoln Drive
 - Provide safer access to Route 47 by extending Outer Road from Dugan Lane to Frenchman Bluff Road

