

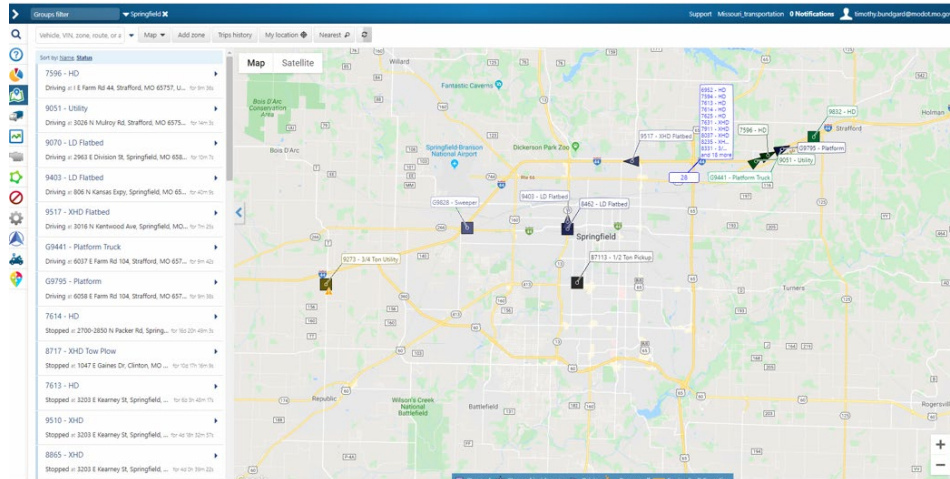


Productivity

April 2020

Prepared by Transportation Planning
Missouri Department of Transportation

GeoTab Proximity Video



Description

The GeoTab is an automatic vehicle location and diagnostic system. With this innovation it allows the department to not only know the location of its vehicles at all times but also helps diagnose issues trucks may be experiencing. This diagnostic side will send a code that technicians can then analyze to see what actions they need to take to treat the truck.

Benefit

This innovation checks all the boxes by saving the department money and time, simplifying work, and improving safety. Money is saved because the number of claims has reduced because of the known locations of trucks. Time is saved and work is simplified with the ability to quickly find vehicle locations. MoDOT employees know if an action is questionable, it is possible to look up the data. Since it monitors different vehicle conditions, it can notify a supervisor if the employee has questionable behavior. MoDOT is also able to find employees in case they slide in the ditch or have an accident and are not able to call for help.

Materials and Labor

The total amount of material cost is \$80 per unit with a reoccurring monthly cost of \$16 per unit. To install the Geotabs is about one hour of labor.

For More Information Contact

Southwest District:

Tim Bundgard at Timothy.bundgard@modot.mo.gov or 417-655-2236. Additional contacts: Aaron Underwood.

Additional information, photos or videos can be seen by accessing Innovations Challenge SharePoint page at: <http://sp/sites/tp/planpol/SitePages/InnovationHome.aspx>