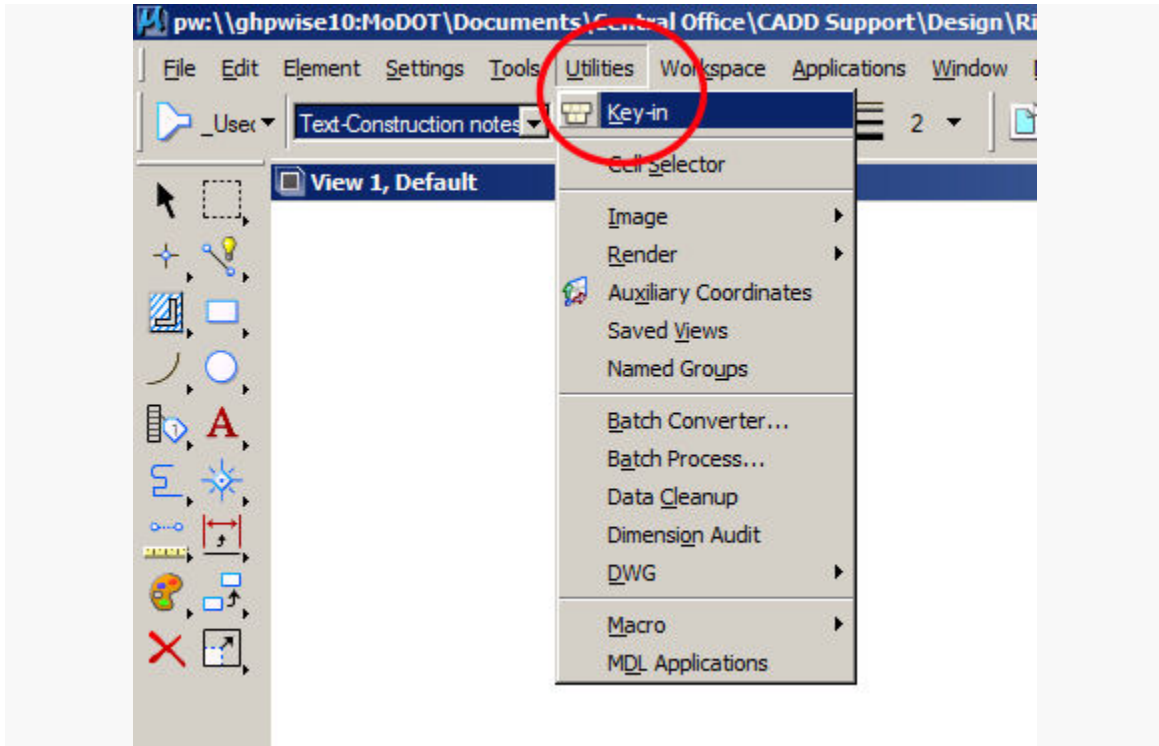


Assigning Key-In Commands to Function (F1-F12) Keys

Key-in Command

The first thing you will need to know is what the key-in command is for the tool you want to use.

Select **Utilities > Key-in...**



Clicking on the AccuDraw option will Open up the other functions of AccuDraw.

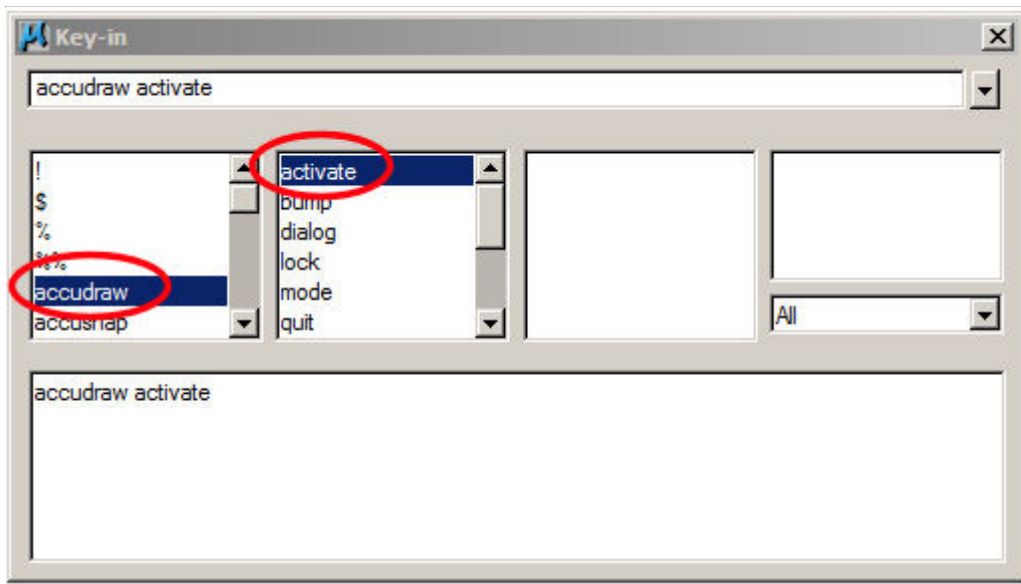
“AccuDraw activate” will turn on and off the AccuDraw tool...this is the option we will want to set up.

AccuDraw Activate

“AccuDraw activate” is the key-in that will enable or disable the AccuDraw tool.

Assigning Key-In Commands to Function (F1-F12) Keys

Key-in Command



Select the **enter** key on the keyboard to toggle the key-in on or off.

Function Key Assignments

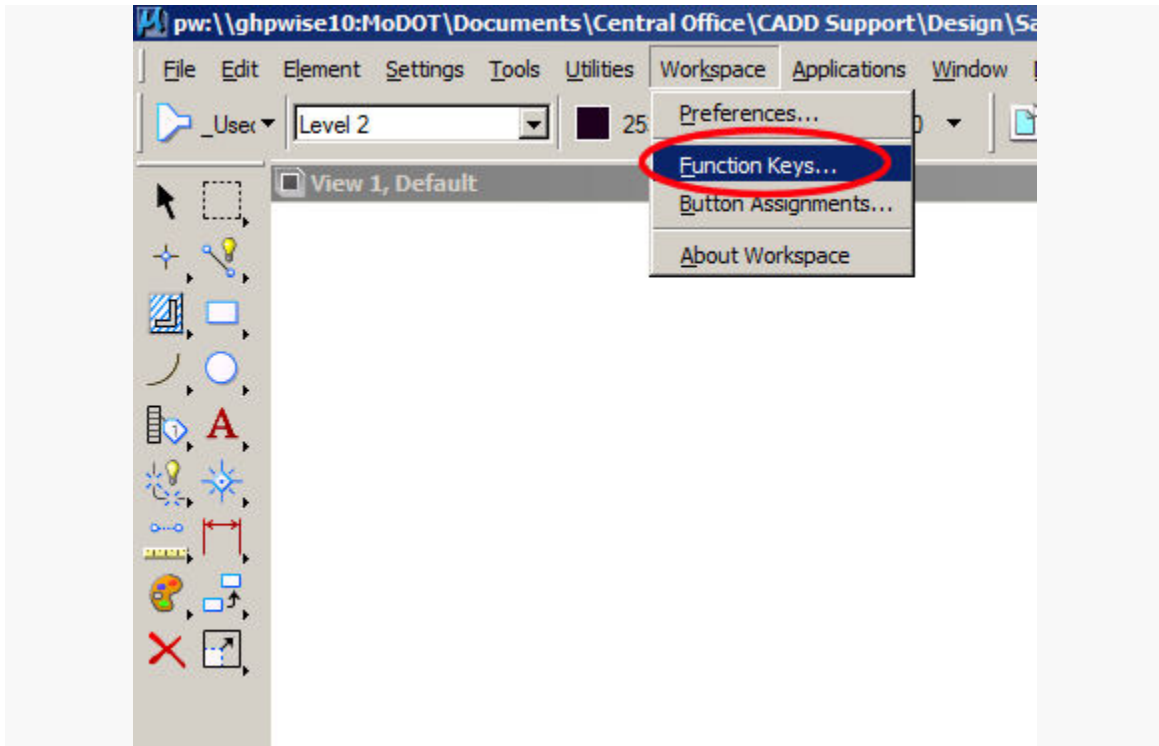
We can also use a Function Key to enable or disable the AccuDraw tool. A Function Key menu is a file that contains keyboard function key assignments.

The Function Key file (username.mnu) is independent of other menu structures. This provides you with the ability of creating many function key files and attaching them when appropriate.

To use the GUI interface to attach and edit the keys, select **Workspace > Function Keys...**

Assigning Key-In Commands to Function (F1-F12) Keys

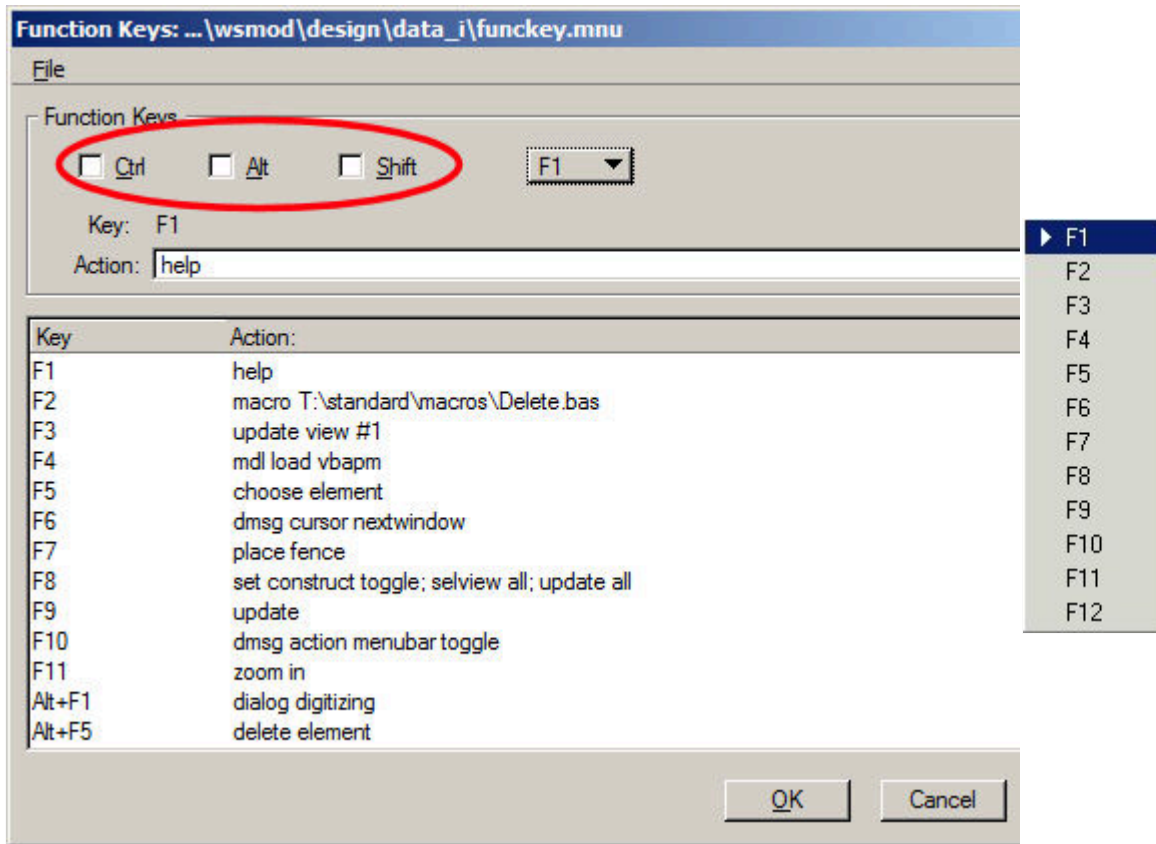
Key-in Command



The path and file name of the open or attached function key menu is displayed in the title bar of the Function Keys dialog box. The definitions in the open function key menu are displayed in the list box.

Assigning Key-In Commands to Function (F1-F12) Keys

Key-in Command



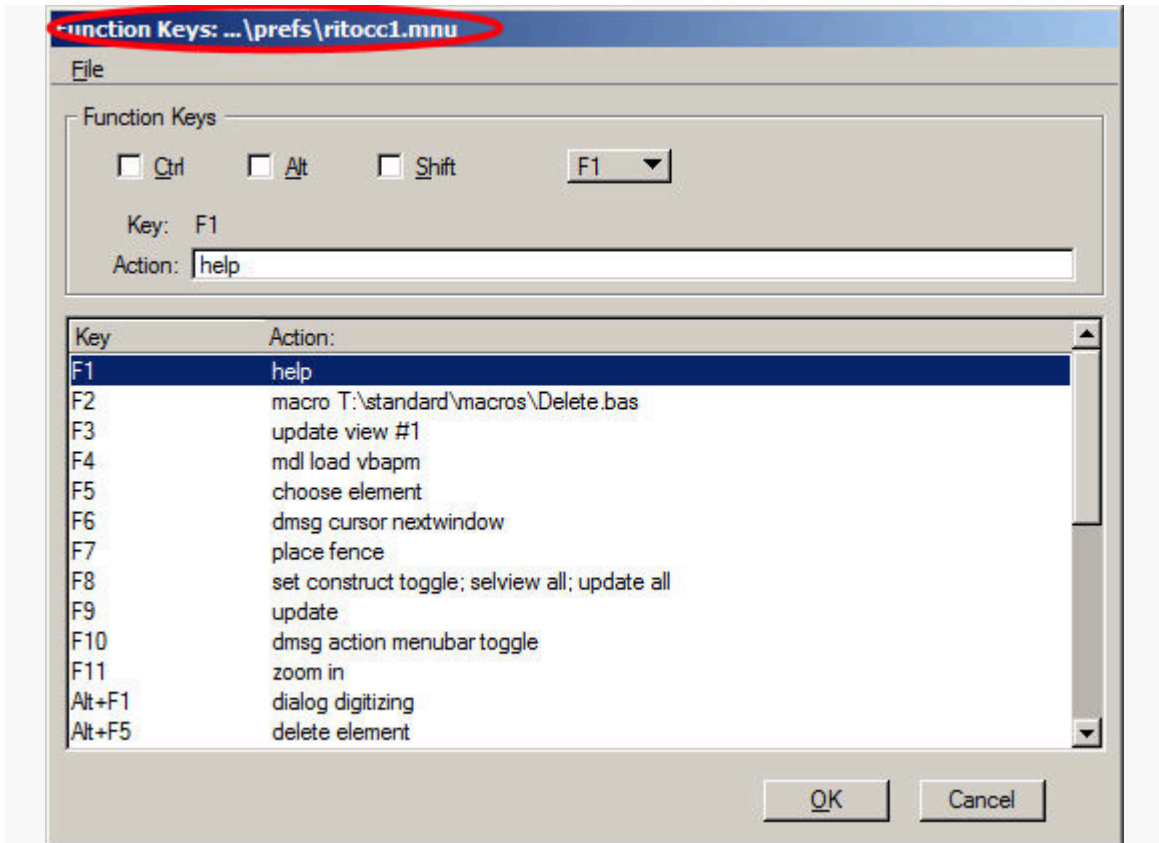
Hint: Choose the Ctrl, Alt, and/or Shift options to add as many function keys as needed.

In addition to function key definitions for the function keys when pressed alone (F1-F12), definitions can be created for pressing the function keys along with modifier keys <Ctrl>, <Alt>, and <Shift> (ie., Alt + F4 or Ctrl + F7).

The first thing you will need to do is save the defaulted funckey.mnu as your username.mnu on your C: drive. You can do this by selecting **File, Save As**, and then navigate to your C:\\Users\\greenc4\\AppData\\Local\\Bentley\\PowerGEOPAK\\8.11\\OQ4n1D1p00EPifXB1vNrKw\\prefs folder, type in your "username.mnu" (ex- ritocc1.mnu).

Assigning Key-In Commands to Function (F1-F12) Keys

Key-in Command

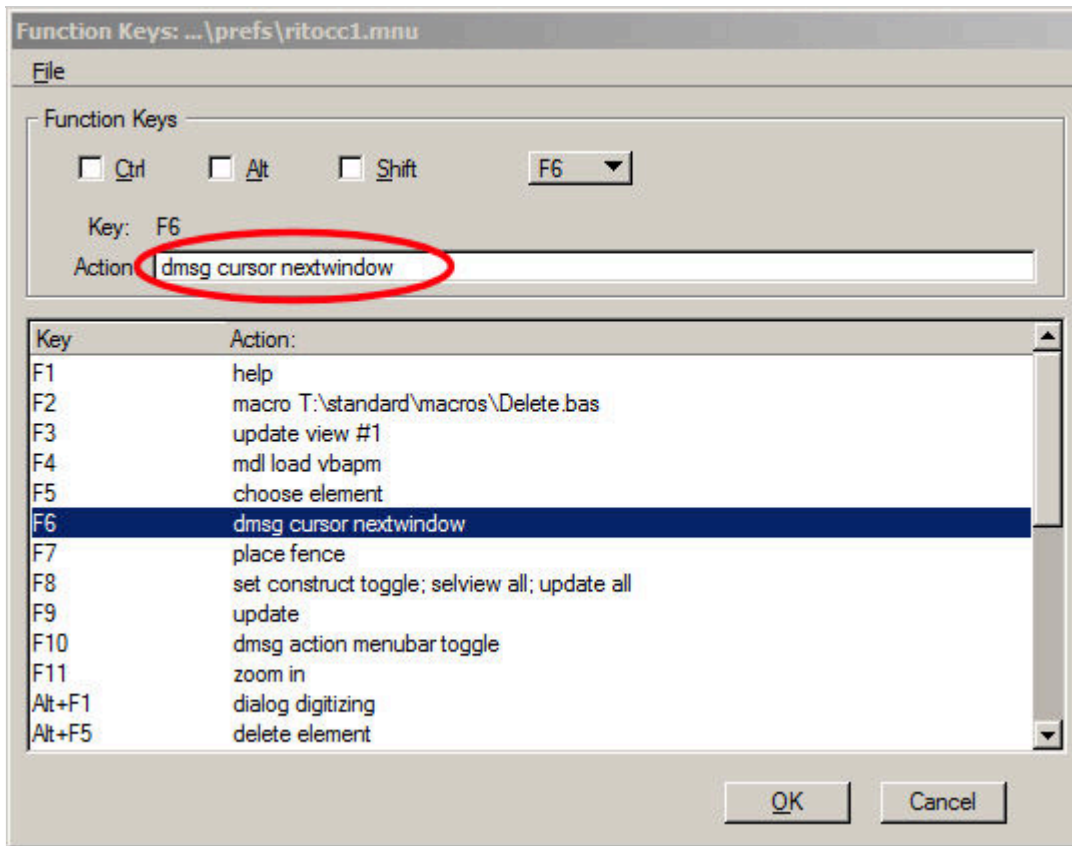


Next, select a function key of your choice (remember that you need to use the Key-In tool first, as seen on page #2, so that it will be available in the steps on page #3).

You can do this by left-clicking on the function in the menu.

Assigning Key-In Commands to Function (F1-F12) Keys

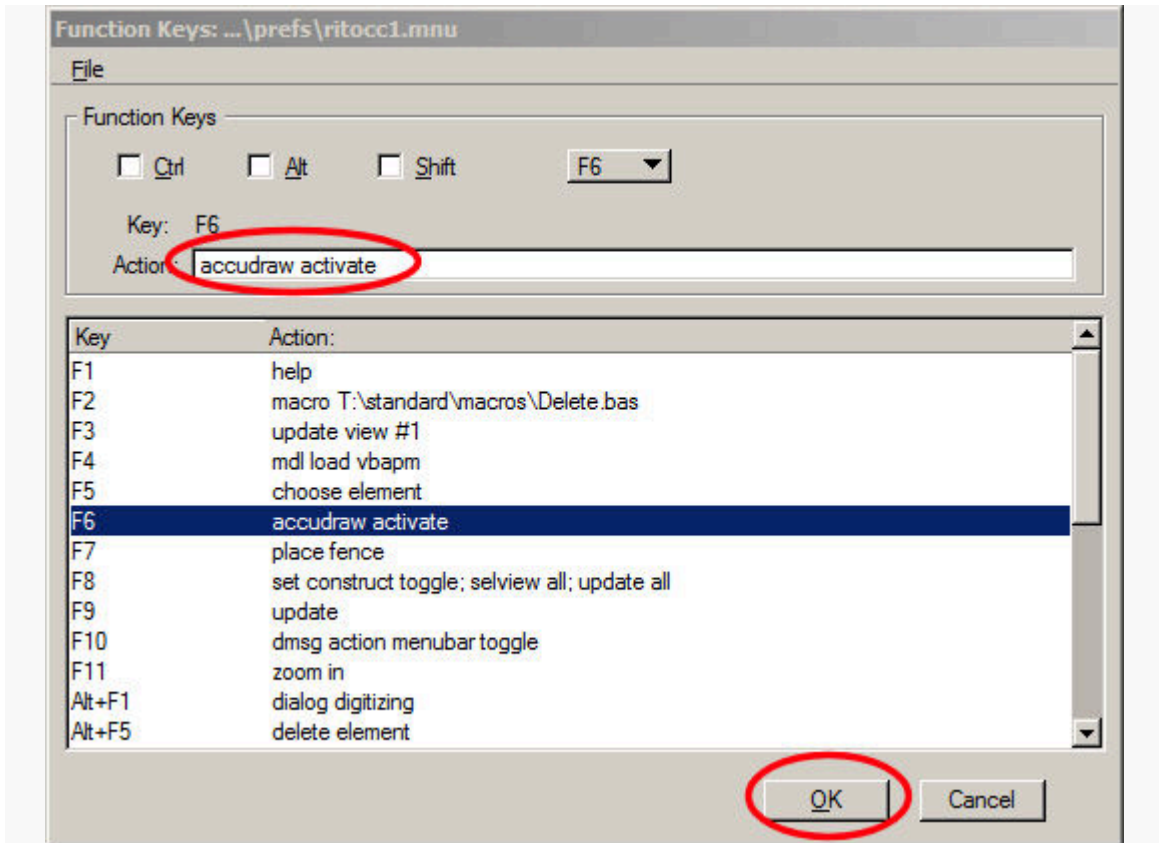
Key-in Command



Type in the new Key-In definition and select **OK**.

Assigning Key-In Commands to Function (F1-F12) Keys

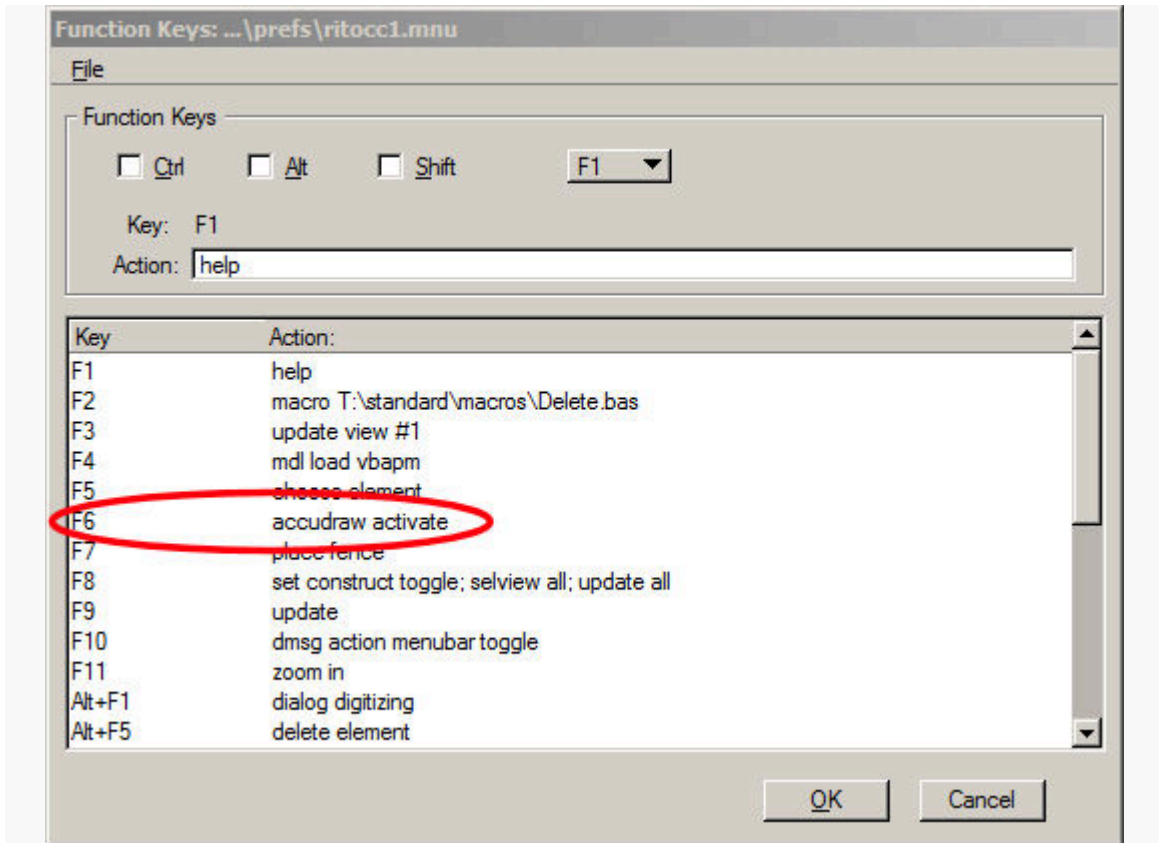
Key-in Command



Clicking **OK** will update and close the Function Keys dialog box. When you open it again, you will now see that F6 has been updated in the example shown below:

Assigning Key-In Commands to Function (F1-F12) Keys

Key-in Command



You are now good to go! Click the F6 key, and AccuDraw is on!! Click the F6 again, and AccuDraw is off!!